

Scott A. Brown P.E.  
 F.P.E #65940  
 698 Timber Creek Road  
 Dixon Illinois 61021

REV.	DESCRIPTION	ECO	DATE
B	1) WAS RICHARD A BAUMANN, P.E., 2) UPDATED JAMB ATTACHMENTS	7802.01	10/02/17
A	RE-TESTED AT ACCREDITED LAB, PRESSURE WAS+22.7/-26.0 ADDED SHTS 2 & 3	6338.01	04/03/12

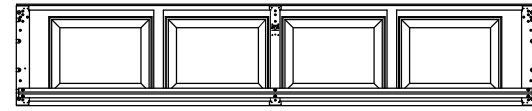
TOLERANCES: DIMENSIONS ARE IN INCHES
TWO PLACE (.XX) ± .03
THREE PLACE (.XXX) ± .015
ANGLES ± 1°
UNLESS OTHERWISE SPECIFIED

MATERIAL:
FINISH:

SCALE: None
DRAWN BY: G. Wedekind
CHECKED BY: G. Wedekind
DATE: 07/18/05
ECO: 4885

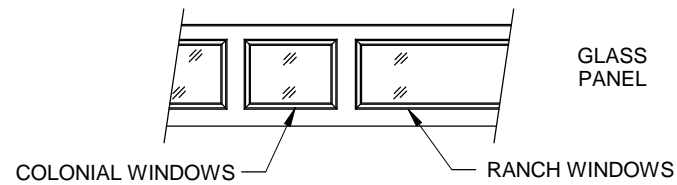


TITLE:	SPEC. WINDLOAD BUILDMARK S / TRADMARK 9' - 0" WIDE		
NO.	P-2300	SHEET	REV
		1 OF 3	B

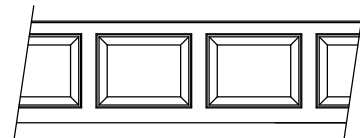


1 CENTER STILE  
8' AND 9' WIDE

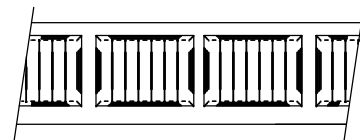
CENTER STILE LAYOUT  
INTERMEDIATE SECTION SHOWN  
INTERIOR VIEW



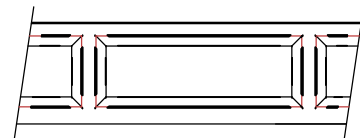
COLONIAL WINDOWS RANCH WINDOWS



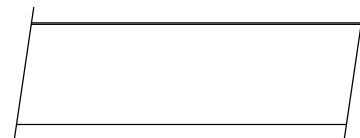
COLONIAL  
PANEL



CARRIAGE HOUSE  
PANEL



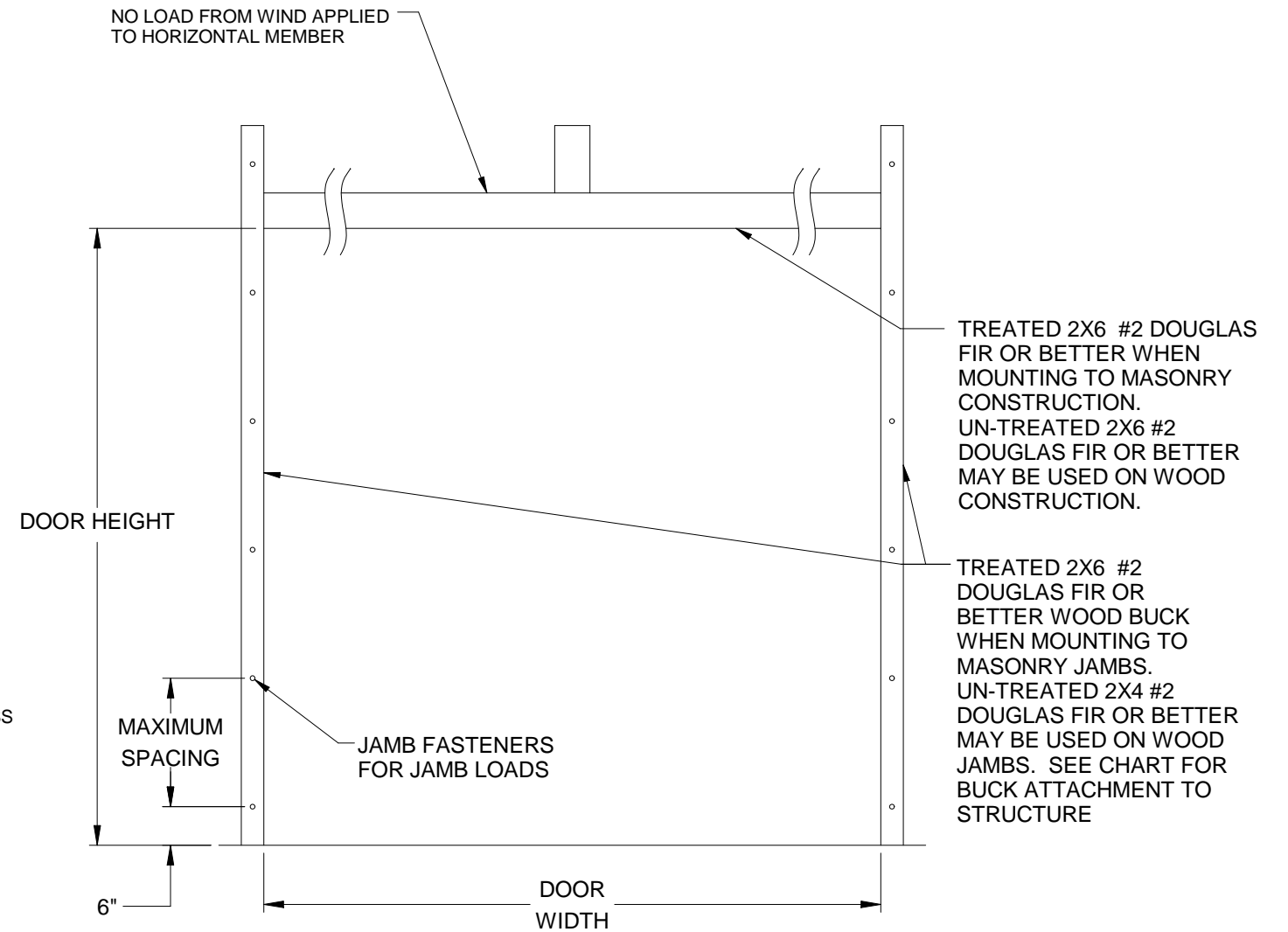
RANCH  
PANEL



FLUSH  
PANEL

PANEL OPTIONS  
EXTERIOR VIEW

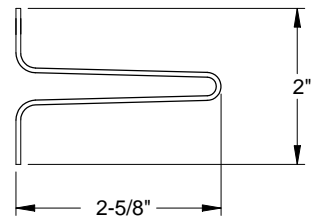
GLASS OPTIONS:  
1/8" DSB  
1/8" ACRYLIC  
1/8" TEMPERED  
1/2" INSULATED GLASS



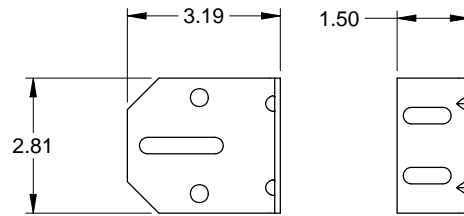
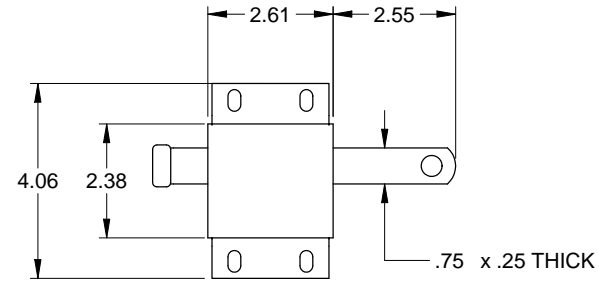
JAMB ATTACHMENT NOTES

1. MAXIMUM POSITIVE LOAD PER JAMB = (9'-0" X 18.5 PSF) / 2 = 84 LBS PER FOOT
2. MAXIMUM NEGATIVE LOAD PER JAMB = (9'-0" X -20.9 PSF) / 2 = 94 LBS PER FOOT.
3. DESIGN OF THE SUPPORTING STRUCTURE SHALL BE THE SOLE RESPONSIBILITY OF THE BUILDING DESIGNER AND SHALL BE DESIGNED FOR THE JAMB LOADS LISTED IN NOTES 1 AND 2.
4. ALTERNATE JAMB ATTACHMENTS MAY BE USED IF APPROVED BY A REGISTERED PROFESSIONAL ENGINEER.
5. DASMA TECHNICAL DATA SHEET TDS-161 MAY BE USED FOR ALTERNATE JAMB ATTACHMENTS.
6. 3/8" DIAMETER LAG SCREWS REQUIRED 1/16" PILOT HOLE AND 1-1/2" MINIMUM EDGE DISTANCE.

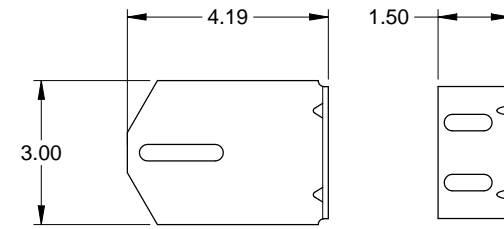
2X6 ATTACHMENT TO STRUCTURE						
STRUCTURE TYPE	FASTENER TYPE	MINIMUM EMBEDMENT	MINIMUM EDGE DISTANCE	MINIMUM ON CENTER SPACING	DIMENSION A (MAXIMUM ON CENTER SPACING)	ALLOWABLE TENSION LOAD
2500 PSI MIN. CONCRETE	1/4" TAPCON+ (PLUS) WITH 1-1/8" OD WASHER	2"	2.5	6"	24"	691
SOUTHERN PINE	3/8" X 3" LAG WITH 1-1/8" OD WASHER	1.50"	1.50"	1.50"	24"	655
SPRUCE PINE FIR	3/8" X 3" LAG WITH 1-1/8" OD WASHER	1.50"	1.50"	1.50"	24"	482



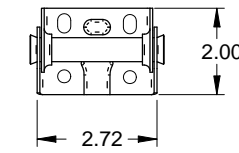
**STEEL U-BAR DETAIL**  
 .035" MIN GALVANIZED  
 HIGH TENSILE STEEL  
 80 KSI MINIMUM YIELD



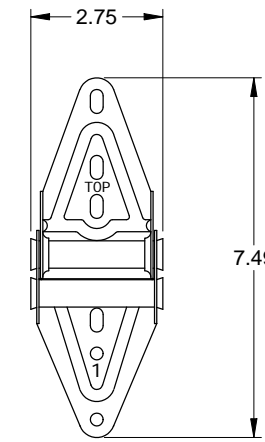
**3" TRACK BRACKET**  
 .116 GALV. STEEL



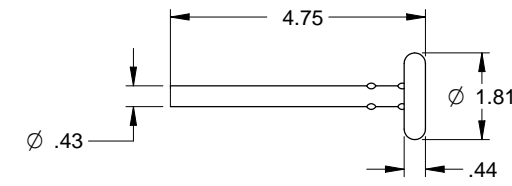
**4" TRACK BRACKET**  
 .116 GALV. STEEL



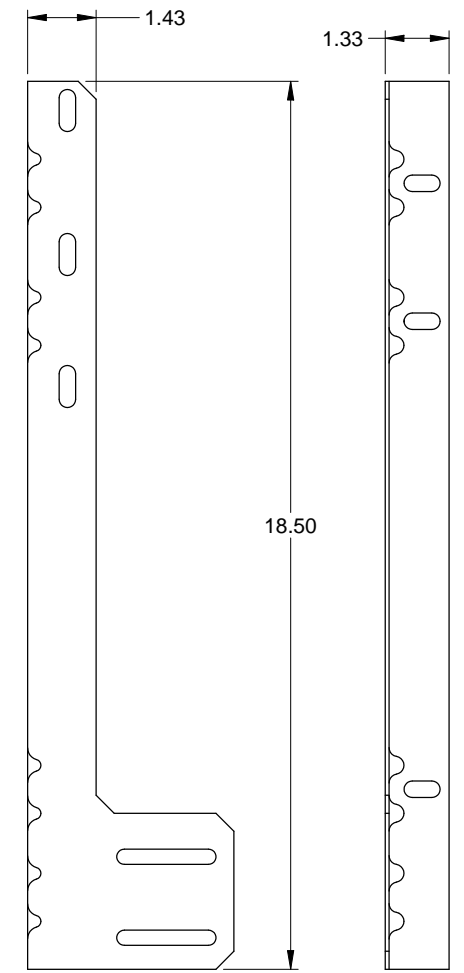
**CENTER HINGE**  
 .045 GALV. STEEL



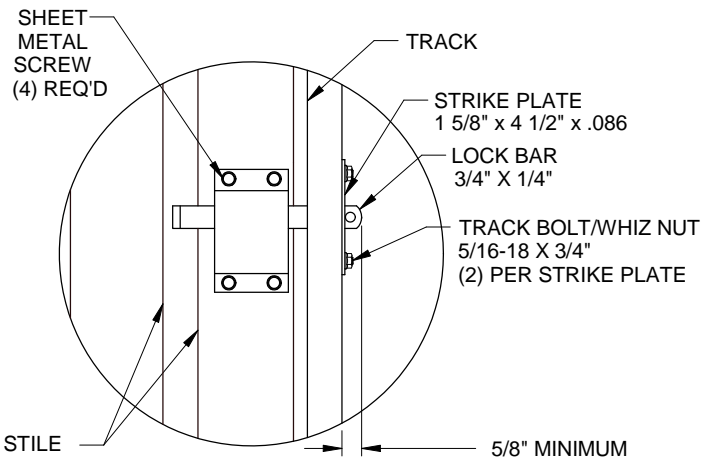
**EDGE HINGE**  
 .086 GALV. STEEL



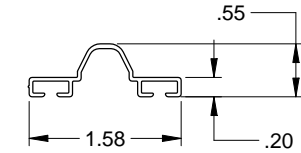
**TRACK ROLLER**



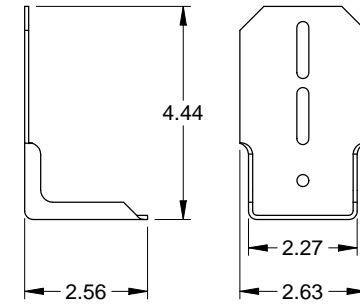
**JAMB ANGLE**  
 .078 GALV. STEEL



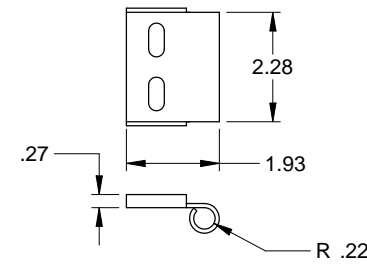
**OPTIONAL INTERIOR  
 LOCK DETAIL**



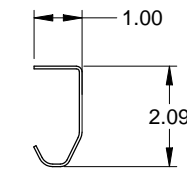
**ASTRAGAL RETAINER**  
 .039 ALUMINUM



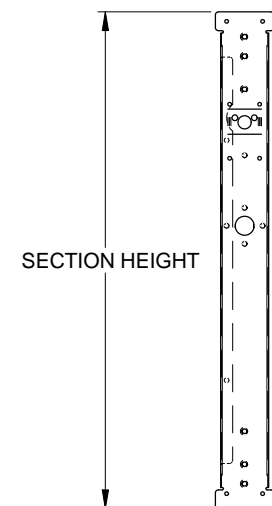
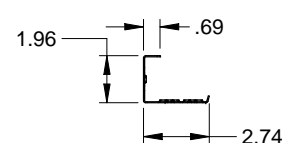
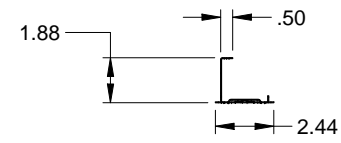
**TOP FIXTURE**  
 .086 GALV. STEEL



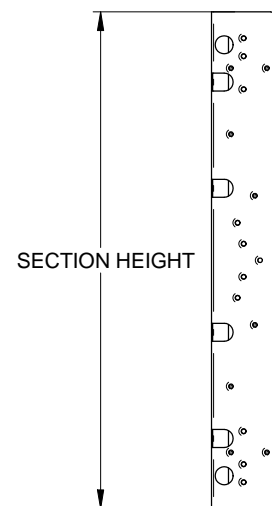
**ROLLER CARRIER**  
 .116 GALV. STEEL  
 ATTACHED TO TOP FIXTURE WITH  
 (2) TRACK BOLTS AND WHIZ NUTS



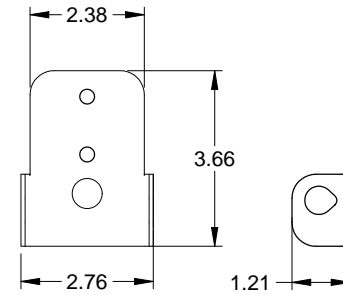
**TRACK**  
 .055 GALV. STEEL



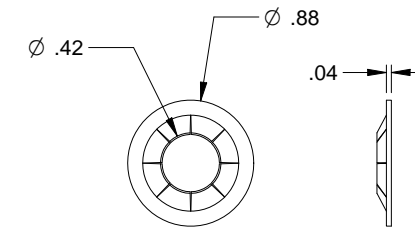
**CENTER STILE**  
 .034 GALV. STEEL



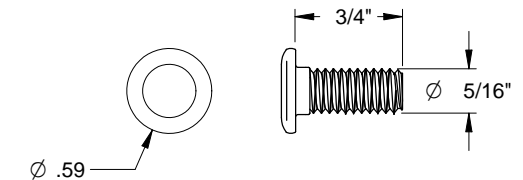
**END STILE**  
 .043 GALV. STEEL



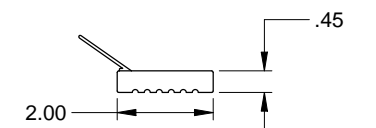
**ROLLER CARRIER**  
 .086 GALV. STEEL



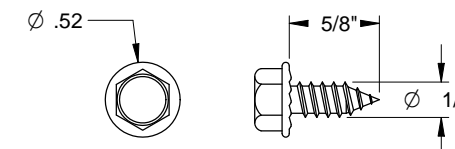
**RETAINING NUT**



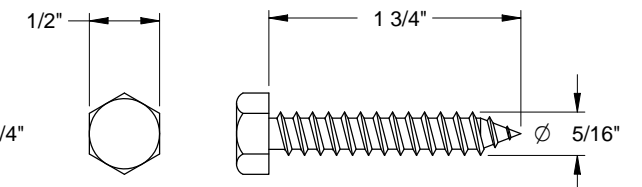
**TRACK BOLT**



**JAMB AND HEADER SEAL**  
 FOAMED PVC WITH FLEXIBLE PVC FLAP



**SHEET METAL SCREW**



**HEX HEAD LAG SCREW**

TOLERANCES: DIMENSIONS ARE IN INCHES
TWO PLACE (.XX) ± .03
THREE PLACE (.XXX) ± .015
ANGLES ± 1°
UNLESS OTHERWISE SPECIFIED

MATERIAL:

FINISH:

SCALE: None

DRAWN BY: G. Wedekind

CHECKED BY: G. Wedekind

DATE: 04/03/12

ECO: 6338.01



1101 EAST RIVER ROAD  
 DIXON, IL 61021

TITLE: SPEC, WINDLOAD  
 BUILDMARK S / TRADEMARK  
 9' - 0" WIDE

NO. P-2300

SHEET  
 3 OF 3

REV  
 B