

Scott A. Brown P.E.
F.P.E. #65940
698 Timber Creek Road
Dixon Illinois 61021

REV.	DESCRIPTION	ECO	DATE
D	1) WAS RICHARD A BAUMANN, P.E., 2) UPDATED JAMB ATTACHMENTS	7804.01	10/02/17
C	ADDED 3 CENTER STILE OPTION	6601.01	04/12/13
B	RE-TESTED AT ACCREDITED LAB, PRESSURE WAS+31.0/-35.2 ADDED SHTS 2 & 3	6321.01	02/03/12
A	ADDED GLASS TYPE	4952	08/05/05

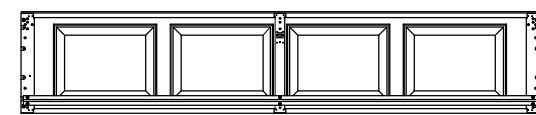
TOLERANCES:
DIMENSIONS ARE IN INCHES
TWO PLACE (.XX) ± .03
THREE PLACE (.XXX) ± .015
ANGLES ± 1°
UNLESS OTHERWISE SPECIFIED

MATERIAL:	SCALE: None
	DRAWN BY: G. Wedekind
	CHECKED BY: G. Wedekind
FINISH:	DATE: 02/03/12
	ECO: 6321.01

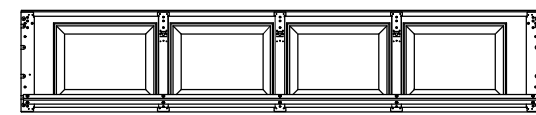
RAYNOR

1101 EAST RIVER ROAD
DIXON, IL. 61021

TITLE:		
SPEC, WINDLOAD BUILDMARK S / TRADEMARK 9' - 0" WIDE		
NO.	SHEET	REV
P-2301	1 OF 3	D

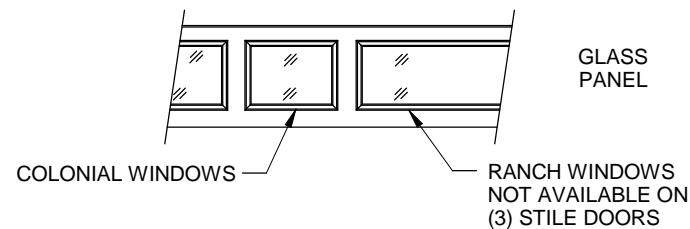


1 CENTER STILE
8' AND 9' WIDE



3 CENTER STILES
8' AND 9' WIDE

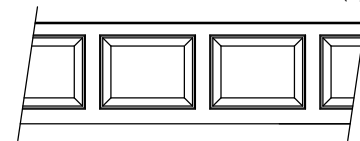
CENTER STILE LAYOUT
INTERMEDIATE SECTION SHOWN
INTERIOR VIEW



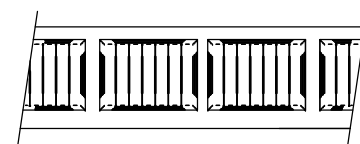
COLONIAL WINDOWS

RANCH WINDOWS
NOT AVAILABLE ON
(3) STILE DOORS

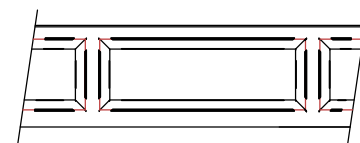
GLASS OPTIONS:
1/8" DSB
1/8" ACRYLIC
1/8" TEMPERED
1/2" INSULATED GLASS



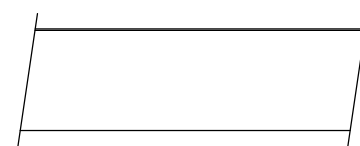
COLONIAL
PANEL



CARRIAGE HOUSE
PANEL

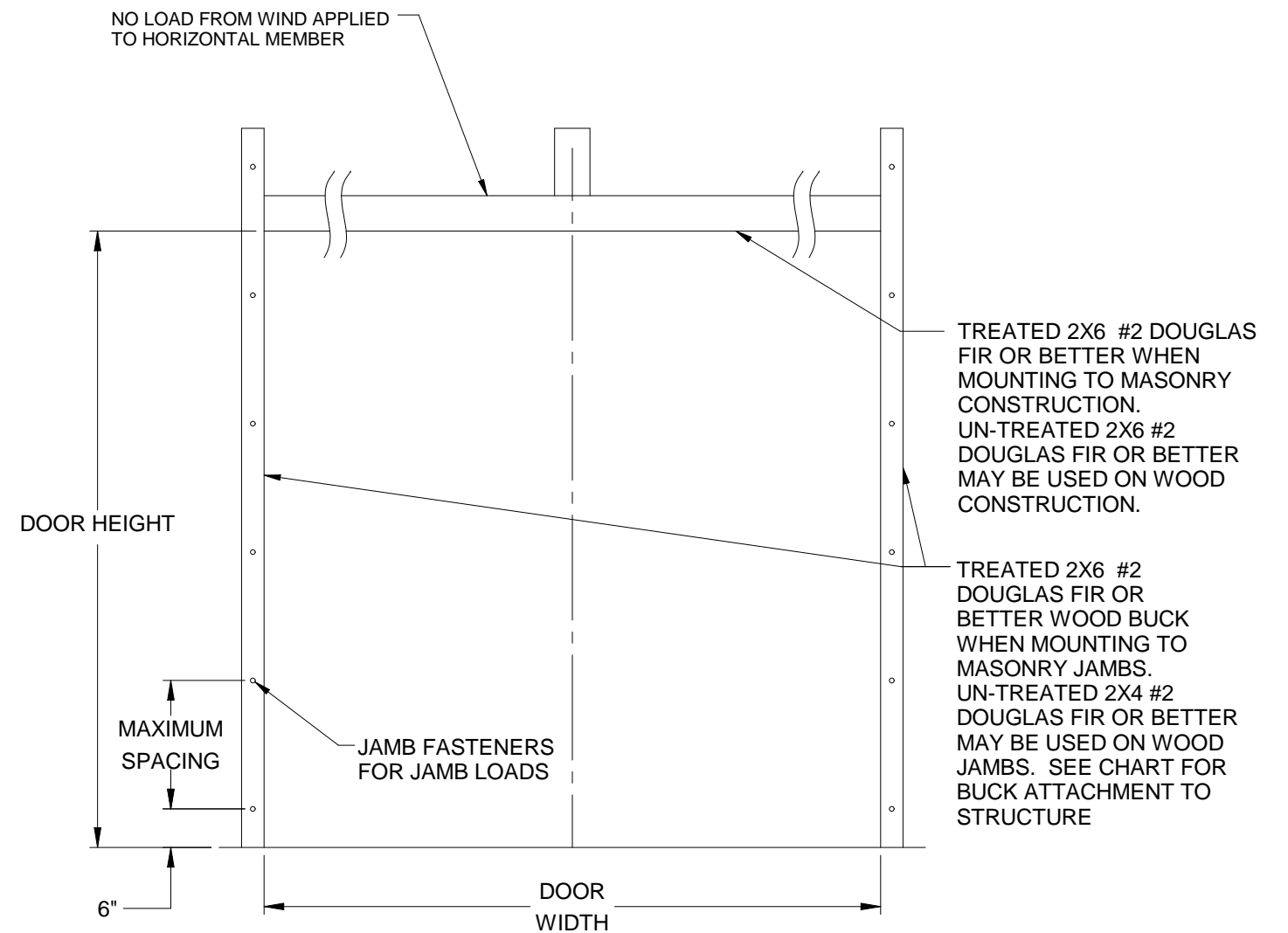


RANCH
PANEL



FLUSH
PANEL

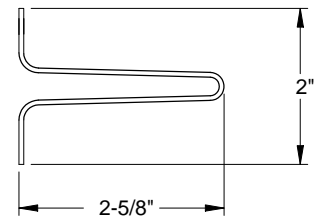
PANEL OPTIONS
EXTERIOR VIEW



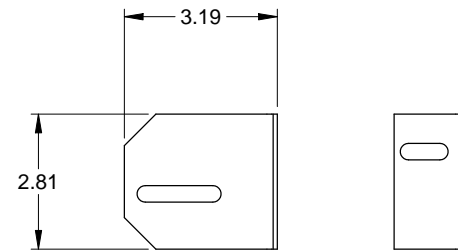
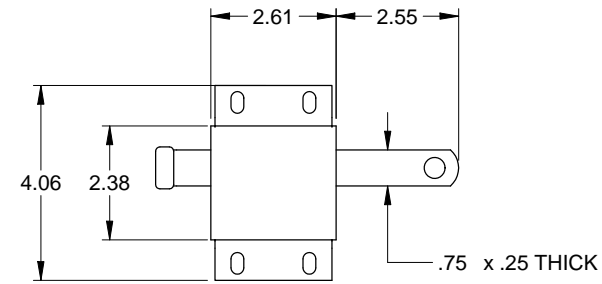
JAMB ATTACHMENT NOTES

1. MAXIMUM POSITIVE LOAD PER JAMB = (9'-0" X 31.0 PSF) / 2 = 140 LBS PER FOOT
2. MAXIMUM NEGATIVE LOAD PER JAMB = (9'-0" X -35.1 PSF) / 2 = 158 LBS PER FOOT.
3. DESIGN OF THE SUPPORTING STRUCTURE SHALL BE THE SOLE RESPONSIBILITY OF THE BUILDING DESIGNER AND SHALL BE DESIGNED FOR THE JAMB LOADS LISTED IN NOTES 1 AND 2.
4. ALTERNATE JAMB ATTACHMENTS MAY BE USED IF APPROVED BY A REGISTERED PROFESSIONAL ENGINEER.
5. DASMA TECHNICAL DATA SHEET TDS-161 MAY BE USED FOR ALTERNATE JAMB ATTACHMENTS.
6. 3/8" DIAMETER LAG SCREWS REQUIRED 1/16" PILOT HOLE AND 1-1/2" MINIMUM EDGE DISTANCE.

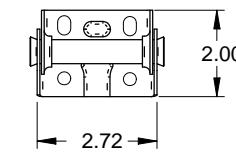
2X6 ATTACHMENT TO STRUCTURE						
STRUCTURE TYPE	FASTENER TYPE	MINIMUM EMBEDMENT	MINIMUM EDGE DISTANCE	MINIMUM ON CENTER SPACING	DIMENSION A (MAXIMUM ON CENTER SPACING)	ALLOWABLE TENSION LOAD
2500 PSI MIN. CONCRETE	1/4" TAPCON+ (PLUS) WITH 1-1/8" OD WASHER	2"	2.5	6"	24"	691
SOUTHERN PINE	3/8" X 3" LAG WITH 1-1/8" OD WASHER	1.50"	1.50"	1.50"	24"	655
SPRUCE PINE FIR	3/8" X 3" LAG WITH 1-1/8" OD WASHER	1.50"	1.50"	1.50"	24"	482



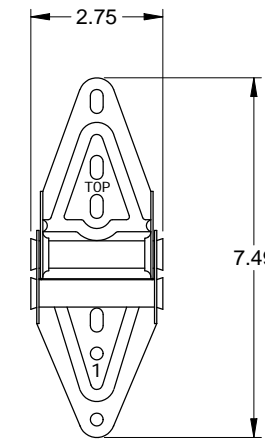
STEEL U-BAR DETAIL
18 GA. (.049" MIN) GALVANIZED
HIGH TENSILE STEEL
80 KSI MINIMUM YIELD



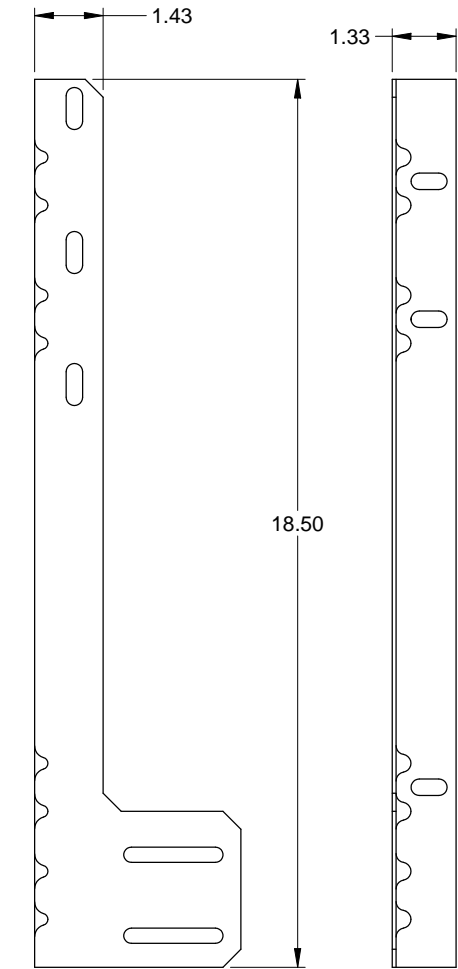
3" TRACK BRACKET
.086 GALV. STEEL



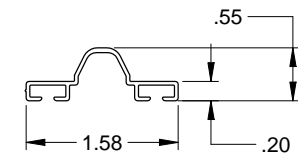
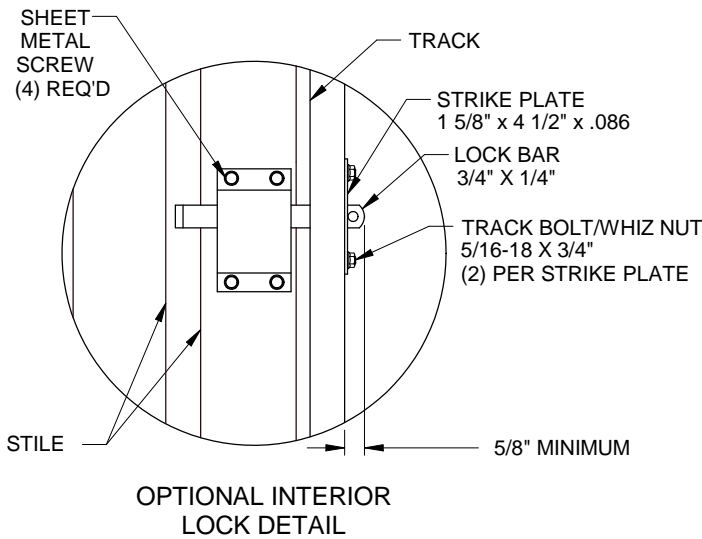
CENTER HINGE
.045 GALV. STEEL



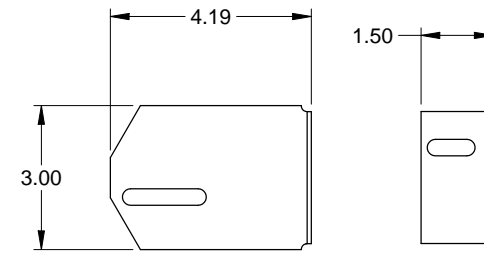
EDGE HINGE
.086 GALV. STEEL



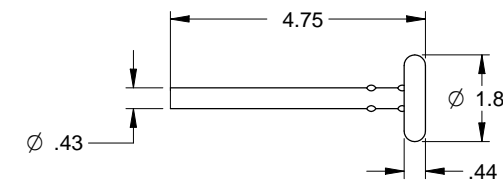
JAMB ANGLE
.078 GALV. STEEL



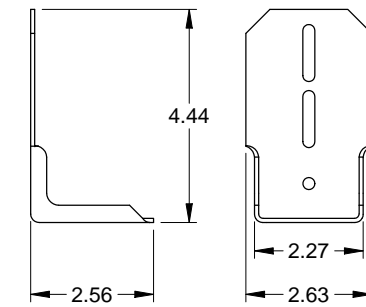
ASTRAGAL RETAINER
.039 ALUMINUM



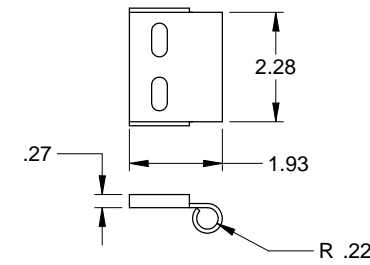
4" TRACK BRACKET
.086 GALV. STEEL



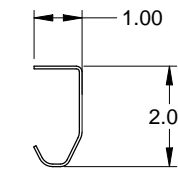
TRACK ROLLER



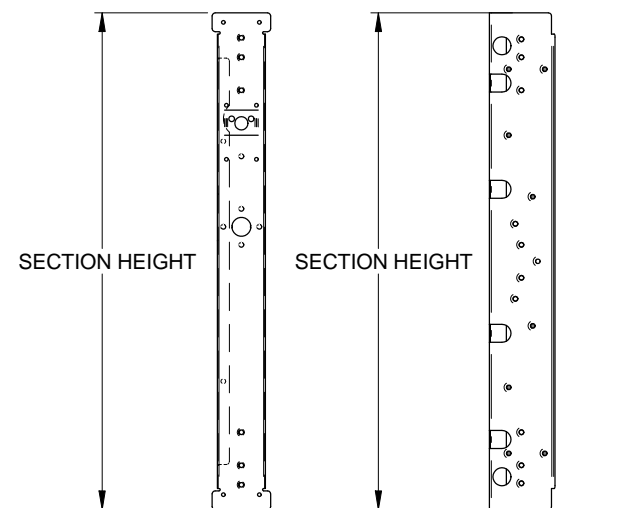
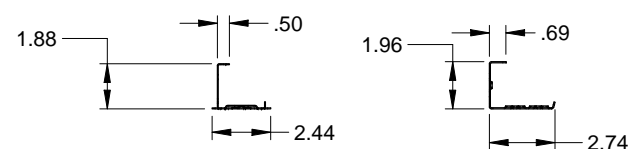
TOP FIXTURE
.086 GALV. STEEL



ROLLER CARRIER
.116 GALV. STEEL
ATTACHED TO TOP FIXTURE WITH
(2) TRACK BOLTS AND WHIZ NUTS

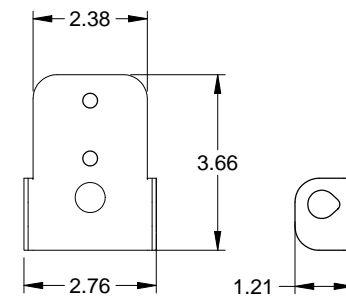


TRACK
.055 GALV. STEEL

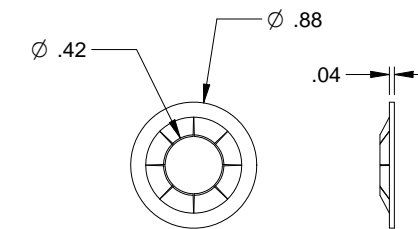


CENTER STILE
.034 GALV. STEEL

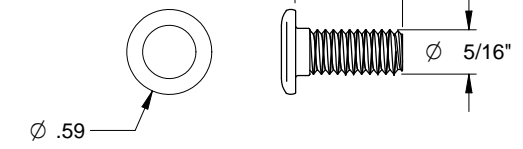
END STILE
.043 GALV. STEEL



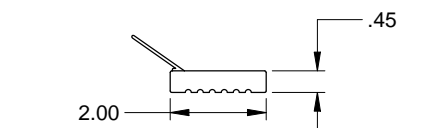
ROLLER CARRIER
.086 GALV. STEEL



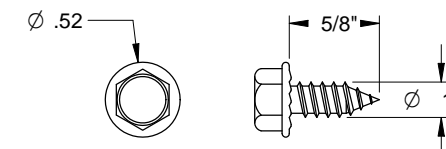
RETAINING NUT



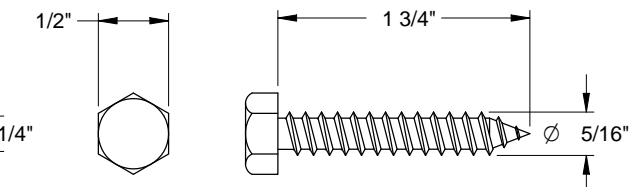
TRACK BOLT



JAMB AND HEADER SEAL
FOAMED PVC WITH FLEXIBLE PVC FLAP



SHEET METAL SCREW



HEX HEAD LAG SCREW

Scott A. Brown P.E.
F.P.E #65940
698 Timber Creek Road
Dixon Illinois 61021

TOLERANCES:
DIMENSIONS ARE IN INCHES
TWO PLACE (.XX) ± .03
THREE PLACE (.XXX) ± .015
ANGLES ± 1°
UNLESS OTHERWISE SPECIFIED

MATERIAL:

FINISH:

SCALE: None

DRAWN BY: G. Wedekind

CHECKED BY: G. Wedekind

DATE: 02/03/12

ECO: 6321.01



1101 EAST RIVER ROAD
DIXON, IL 61021

TITLE: SPEC, WINDLOAD
BUILDMARK S / TRADEMARK
9' - 0" WIDE

NO. P-2301

SHEET
3 OF 3

REV
D