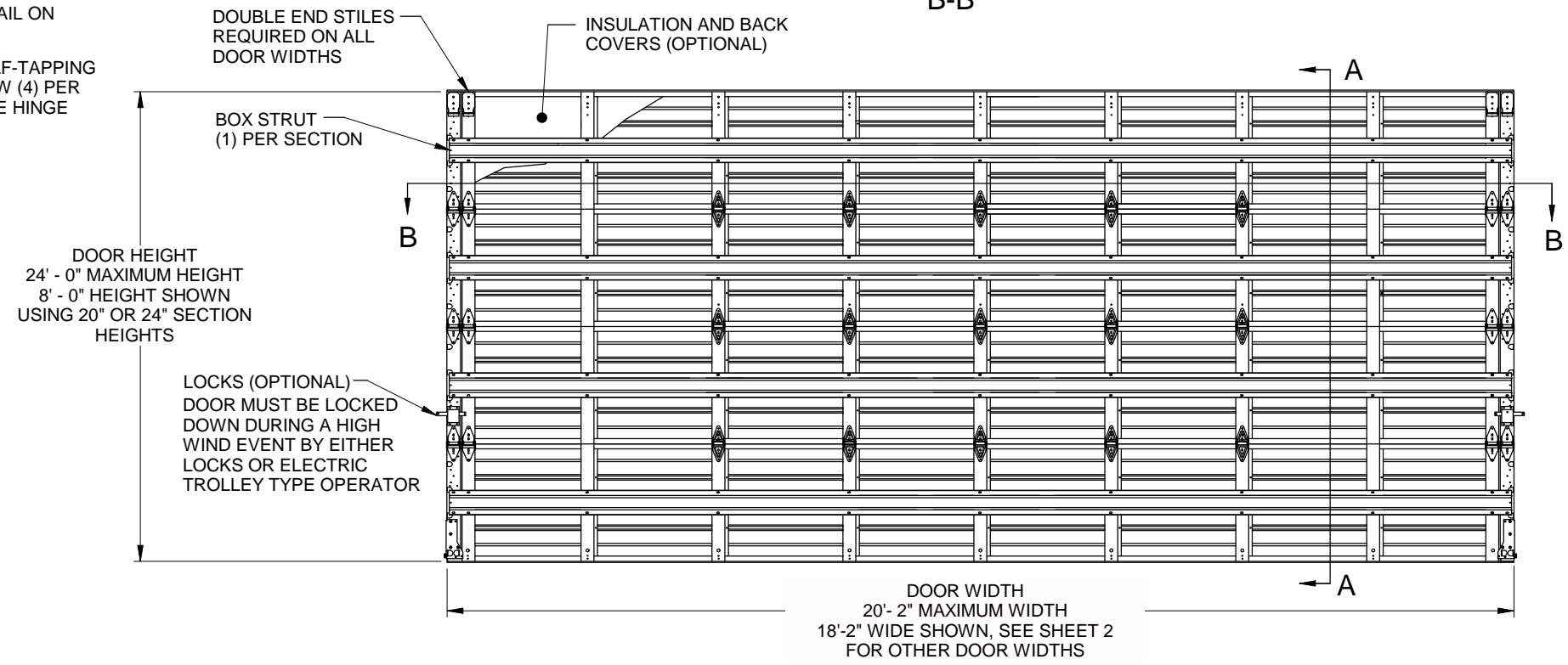
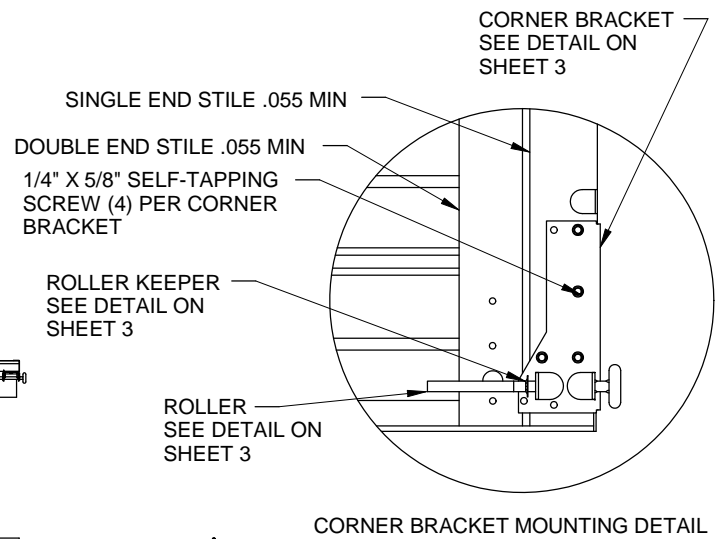
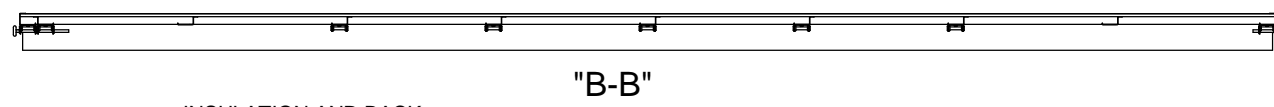
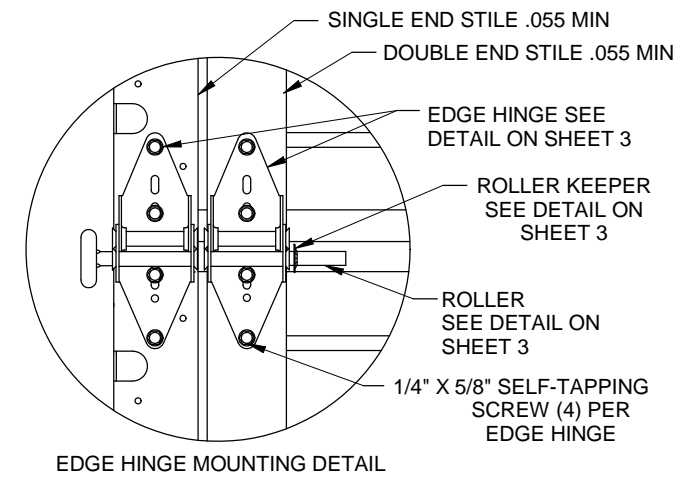
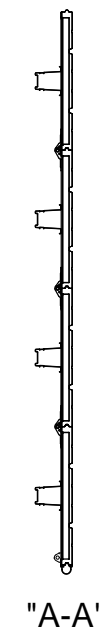


TOP FIXTURE NOTES:
EITHER TYPE MAY BE USED, TYPED DETERMINED BY DOOR HEIGHT AND OR DOOR WEIGHT



TRACK AND COUNTER BALANCE ASSEMBLIES
WERE OMITTED FROM ALL DETAILS ON THIS
PAGE FOR CLARITY. SEE SHEET 2 FOR
TRACK AND COUNTER BALANCE DETAILS

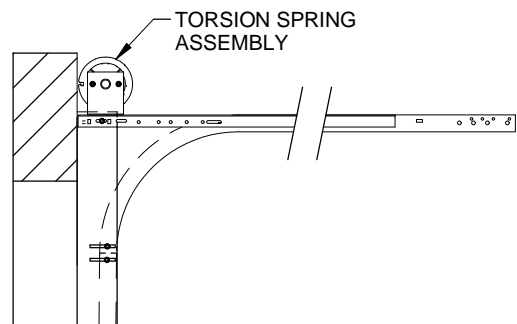


DOORS TESTED PER
ANSI/DASMA 108
FOR STATIC AIR PRESSURE

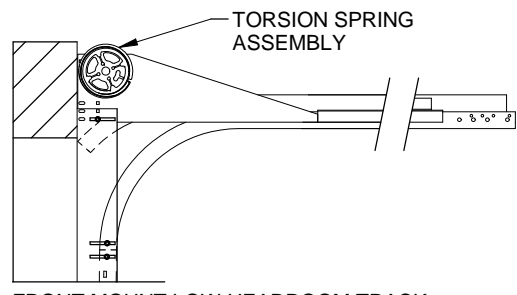
DOOR WIDTH	DESIGN LOAD	
UP TO 16' - 2"	+ 43.3	- 53.3
17' - 2"	+ 36.0	- 46.7
18' - 2"	+ 30.0	- 41.2
19' - 2"	+ 27.0	- 37.0
20' - 2"	+ 24.3	- 33.4

Scott A. Brown P.E.
F.P.E #65940
698 Timber Creek Road
Dixon Illinois 61021

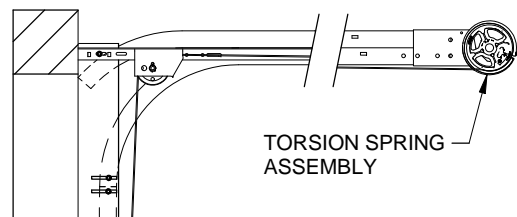
SCALE: NONE		DRAWN BY: G.WEDEKIND		TITLE: SPEC, WIND LOAD STEELFORM 26 GA, 24 GA, 20 GA.	
B	1) WAS RICHARD A BAUMANN, P.E., 2) UPDATED JAMB ATTACHMENTS	7804.01	10/02/17	CHECKED BY: GW	RAYNOR GARAGE DOORS BOX 448 EAST RIVER ROAD DIXON, ILL. 61021
A	RELEASE FOR PRODUCTION	6338.01	03/12/12	DATE: 03/12/12	
REV.	DESCRIPTION	ECN NO.	DATE	ECN NO.: 6338.01	NO. P-2407
					SHEET 1 OF 4
					REV B



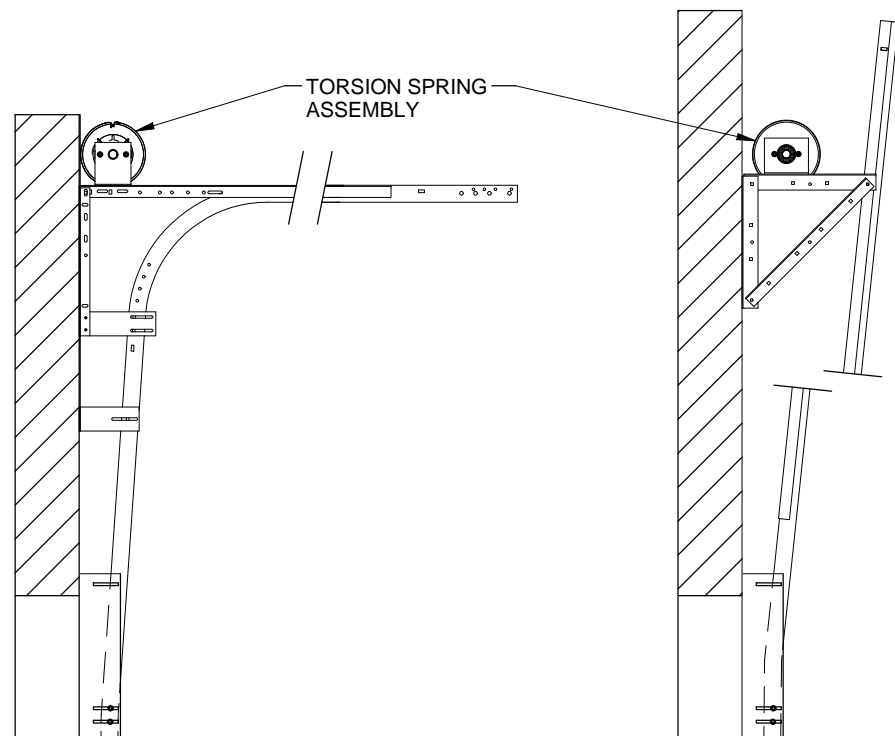
NORMAL HEADROOM TRACK
2" TRACK ANGLE MOUNT SHOWN
2" TRACK BRACKET MOUNT AVAILABLE
3" TRACK ANGLE MOUNT AVAILABLE



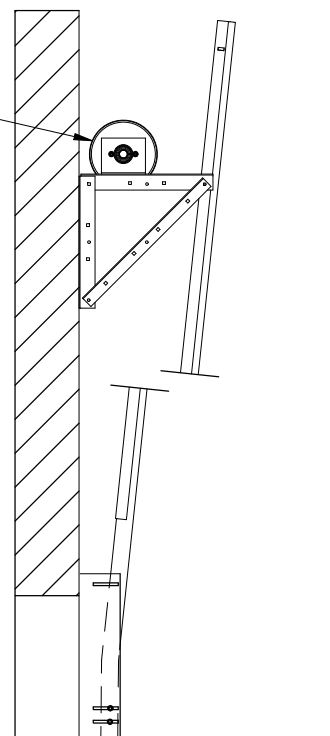
FRONT MOUNT LOW HEADROOM TRACK
2" TRACK ANGLE MOUNT SHOWN
2" TRACK BRACKET MOUNT AVAILABLE
3" TRACK ANGLE MOUNT AVAILABLE



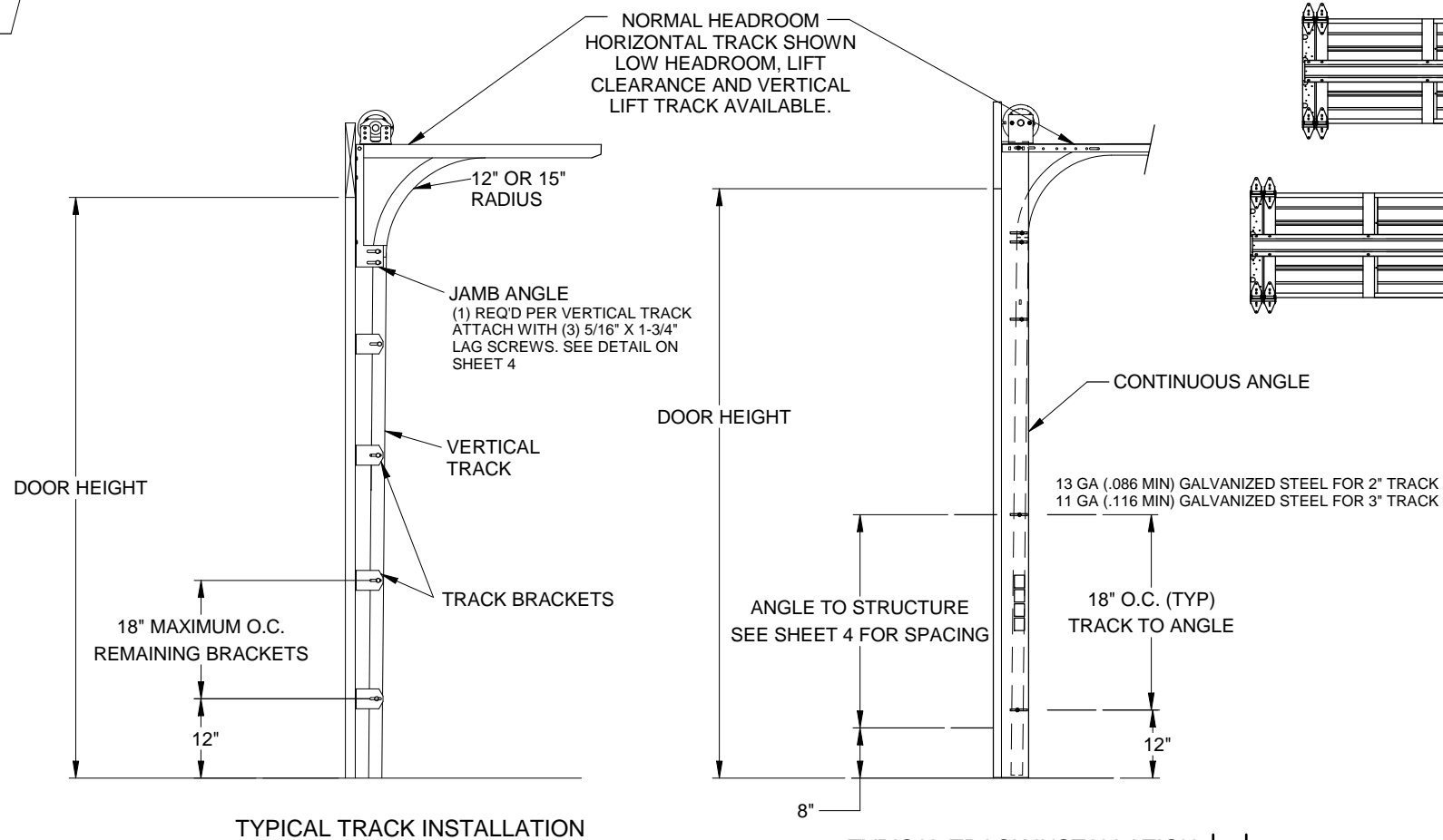
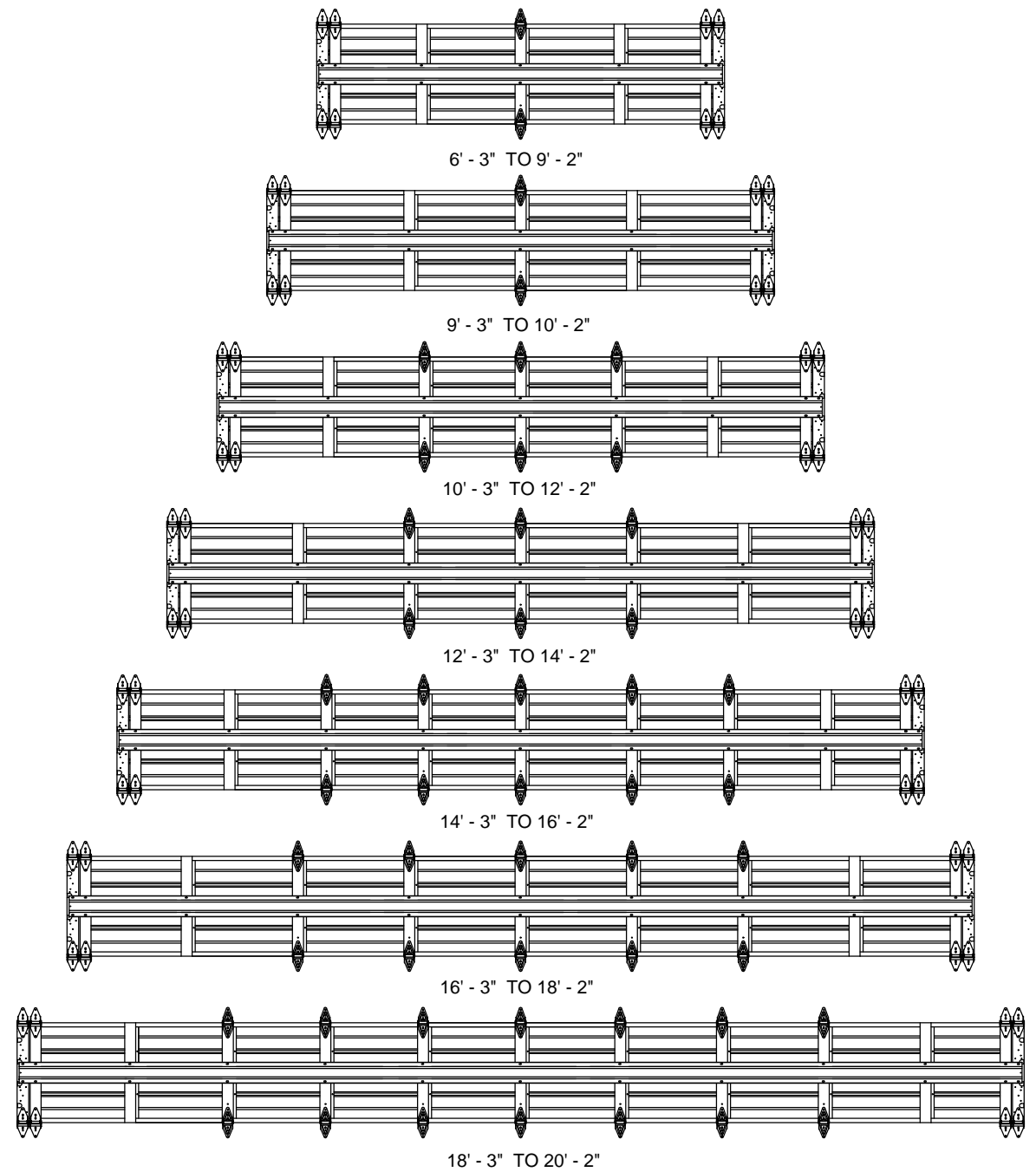
REAR MOUNT LOW HEADROOM TRACK
2" TRACK ANGLE MOUNT SHOWN
2" TRACK BRACKET MOUNT AVAILABLE
3" TRACK ANGLE MOUNT AVAILABLE



LIFT CLEARANCE TRACK
2" TRACK ANGLE MOUNT SHOWN
2" TRACK BRACKET MOUNT AVAILABLE
3" TRACK ANGLE MOUNT AVAILABLE

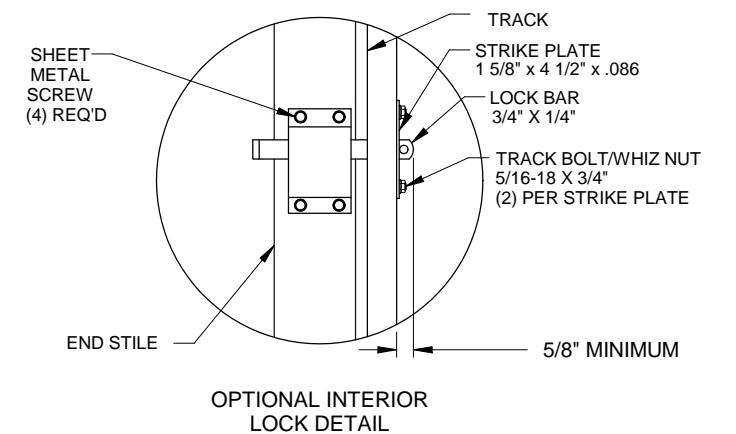


VERTICAL LIFT TRACK
2" TRACK ANGLE MOUNT SHOWN
2" TRACK BRACKET MOUNT AVAILABLE
3" TRACK ANGLE MOUNT AVAILABLE



TYPICAL TRACK INSTALLATION

TYPICAL TRACK INSTALLATION
ANGLE MOUNT
WOOD, STEEL OR MASONRY
JAMBS



Scott A. Brown P.E.
F.P.E #65940
698 Timber Creek Road
Dixon Illinois 61021

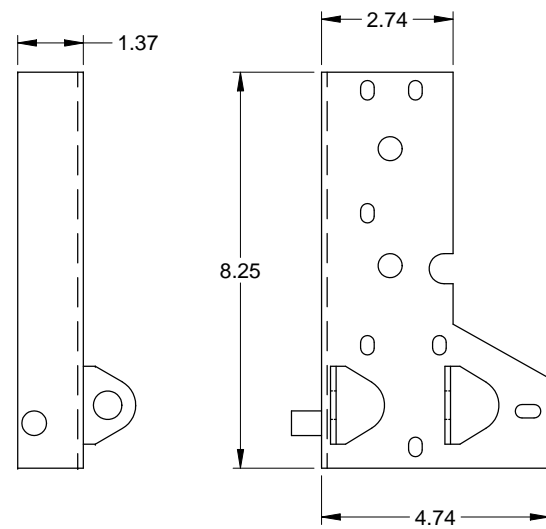
SCALE: NONE
DRAWN BY: G.WEDEKIND
CHECKED BY: GW
DATE: 03/12/12
ECN NO.: 6338.01

RAYNOR
GARAGE DOORS
BOX 448 EAST RIVER ROAD
DIXON, ILL. 61021

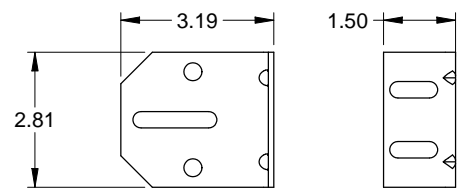
TITLE: SPEC, WIND LOAD
STEELFORM 26 GA,
24 GA, 20 GA.

NO. P-2407 SHEET 2 OF 4 REV B

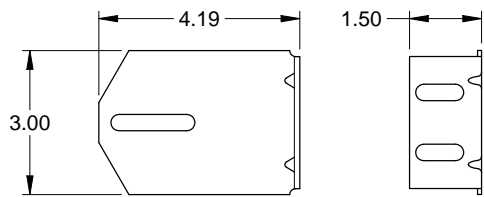
REV.	DESCRIPTION	ECN NO.	DATE



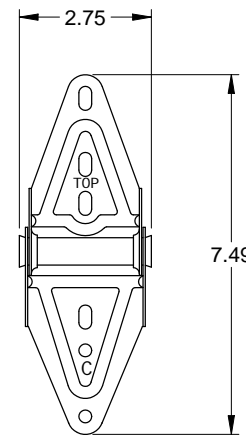
SCALE 1:2
CORNER BRACKET
(FOR DOORS OVER 600 LBS)
.116 GALV. STEEL



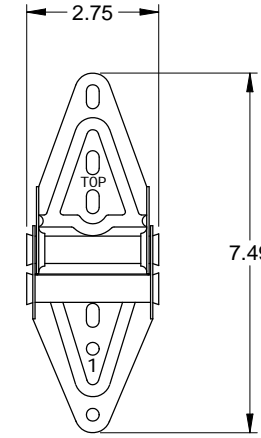
SCALE 1:2
3" TRACK BRACKET
.116 GALV. STEEL



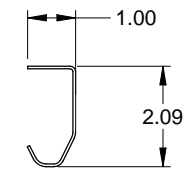
SCALE 1:2
4" TRACK BRACKET
.116 GALV. STEEL



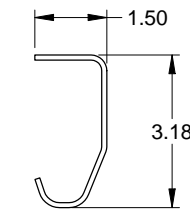
SCALE 1:2
CENTER HINGE
.045 GALV. STEEL



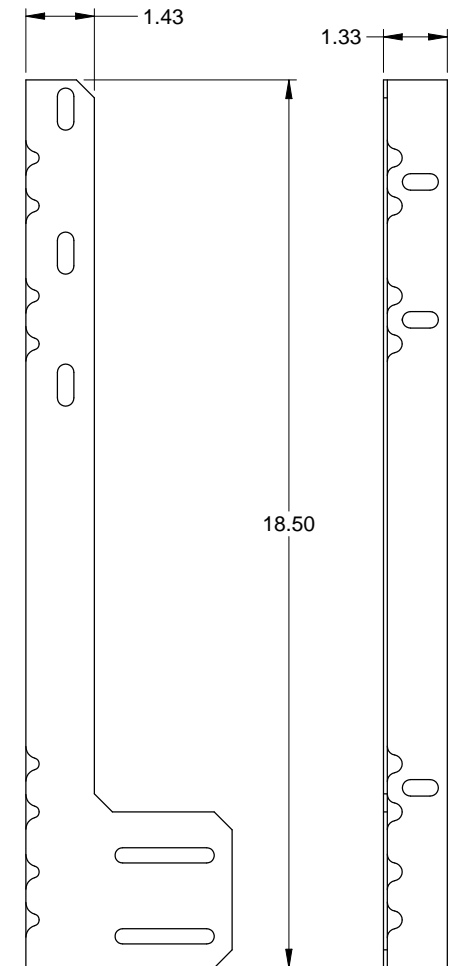
SCALE 1:2
EDGE HINGE
.086 GALV. STEEL



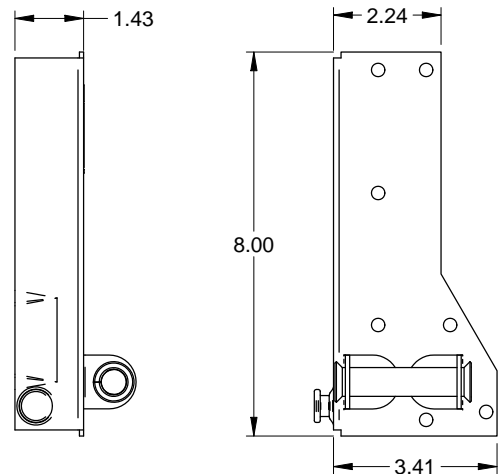
SCALE 1:2
2" TRACK
.086 MIN. GALV. STEEL



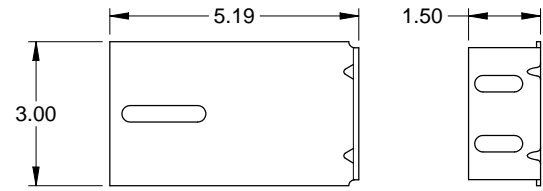
SCALE 1:2
3" TRACK (OPTIONAL)
.105 GALV. STEEL



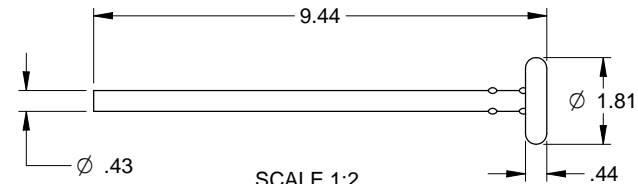
SCALE 1:2
JAMB ANGLE
.078 GALV. STEEL



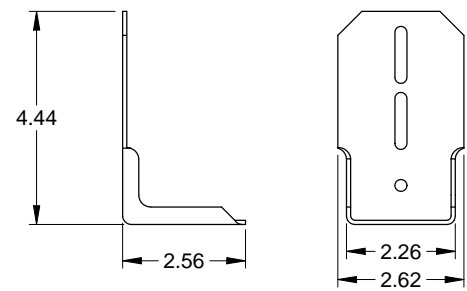
SCALE 1:2
CORNER BRACKET
(FOR DOORS UP TO 600 LBS)
.116 GALV. STEEL



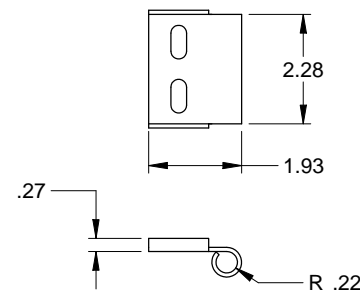
SCALE 1:2
5" TRACK BRACKET
.116 GALV. STEEL



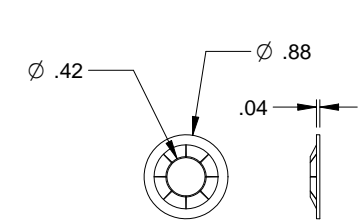
SCALE 1:2
LONG STEM HURRICANE
TRACK ROLLER



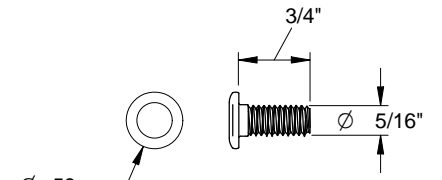
SCALE 1:2
LIGHT COMMERCIAL TOP FIXTURE
(FOR DOORS 5 SECTIONS HIGH OR LESS)
.086 GALV. STEEL



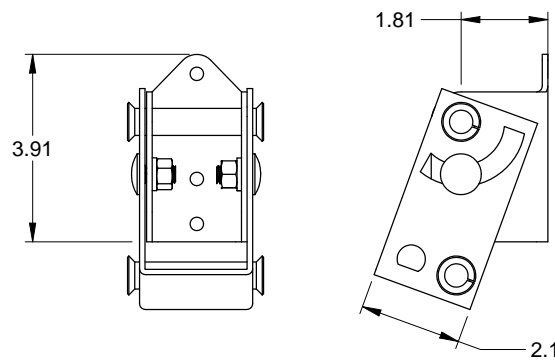
SCALE 1:2
ROLLER CARRIER
.116 GALV. STEEL
ATTACHED TO LIGHT COMMERCIAL TOP FIXTURE
WITH (2) TRACK BOLTS AND WHIZ NUTS



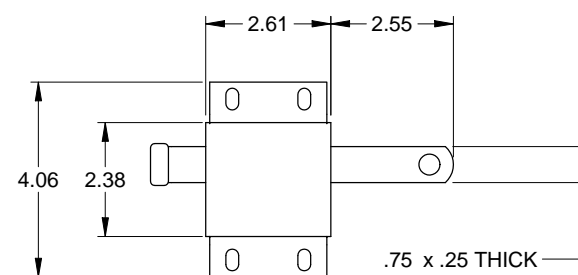
SCALE 1:1
RETAINING NUT



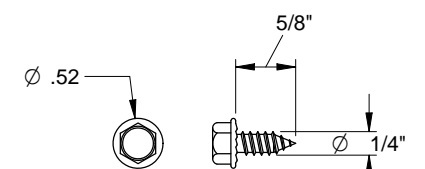
SCALE 1:1
TRACK BOLT



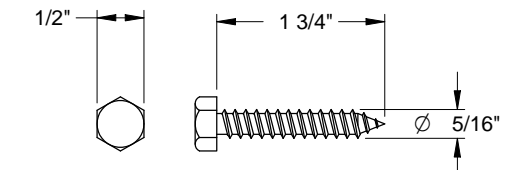
SCALE 1:2
HEAVY COMMERCIAL TOP FIXTURE
.116 GALV. STEEL



SCALE 1:
SLIDE LOCK (OPTIONAL)
CASE .086 GALV. STEEL



SCALE 1:1
SHEET METAL SCREW

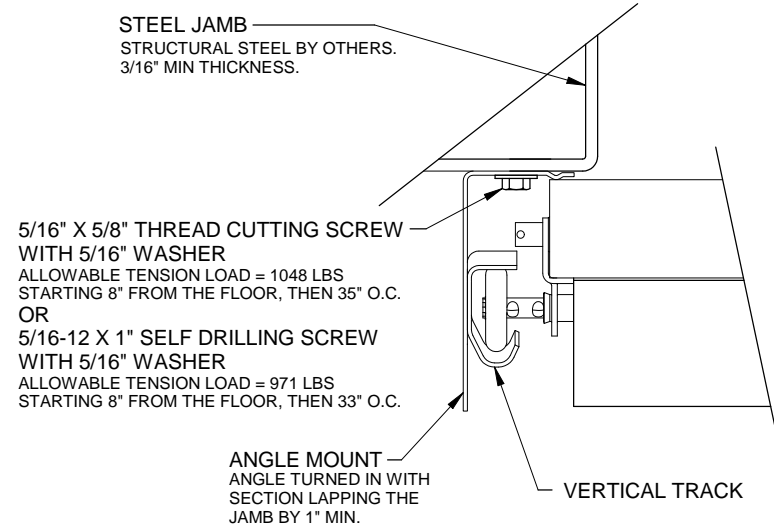


SCALE 1:1
HEX HEAD LAG SCREW

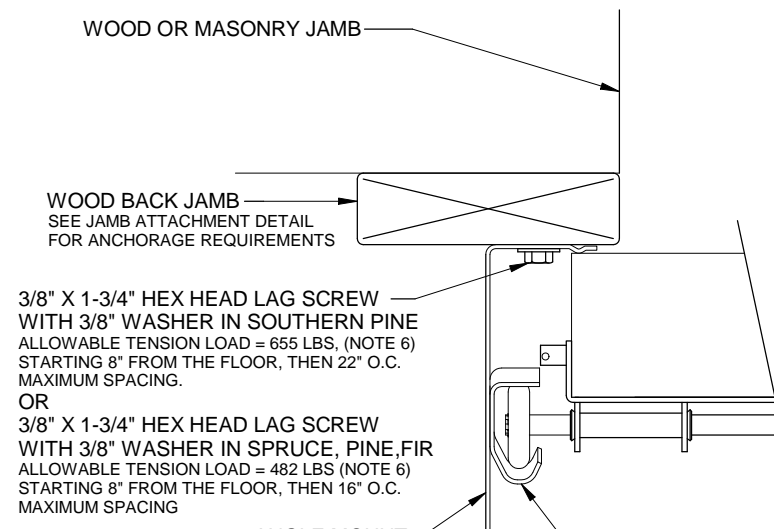
SCALE: NONE		DRAWN BY: G.WEDEKIND		TITLE: SPEC, WIND LOAD STEELFORM 26 GA, 24 GA, 20 GA.	
CHECKED BY: GW		DATE: 03/12/12		NO. P-2407	
ECN NO. 6338.01		DATE		SHEET 3 OF 4	
DESCRIPTION		DATE		REV B	



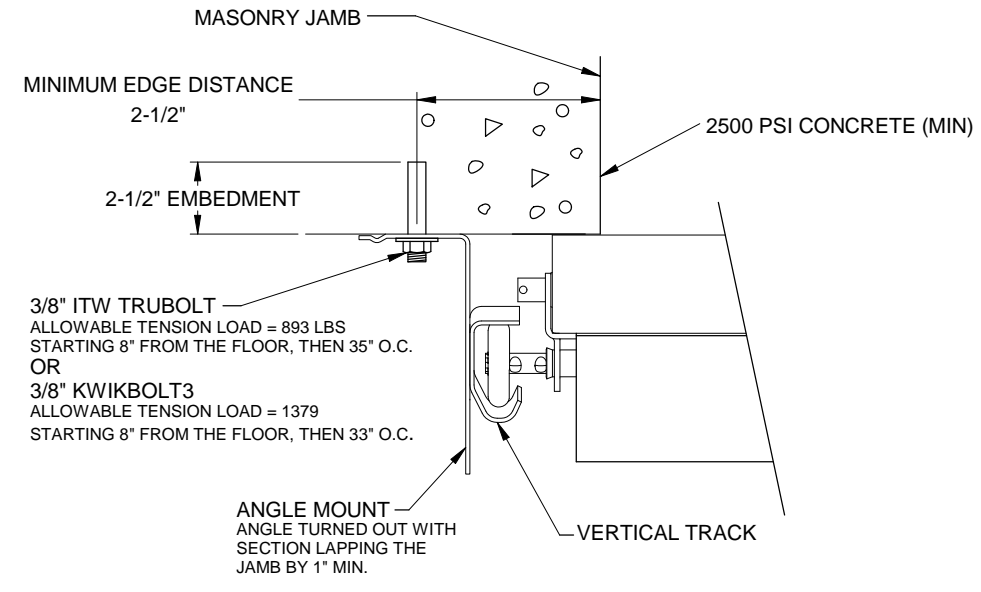
BOX 488 EAST RIVER ROAD
DIXON, ILL. 61021



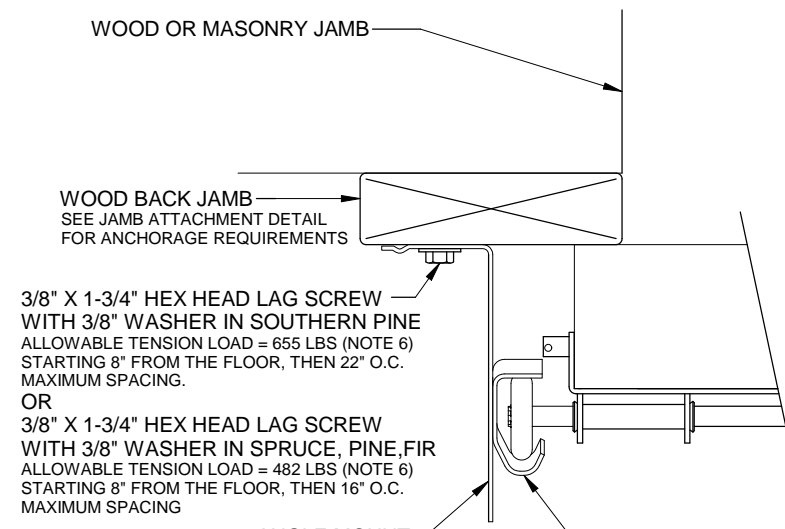
TRACK ASSEMBLY ATTACHMENT TO STEEL JAMB
2" TRACK ANGLE MOUNT TURNED IN SHOWN
3" TRACK ANGLE MOUNT AVAILABLE



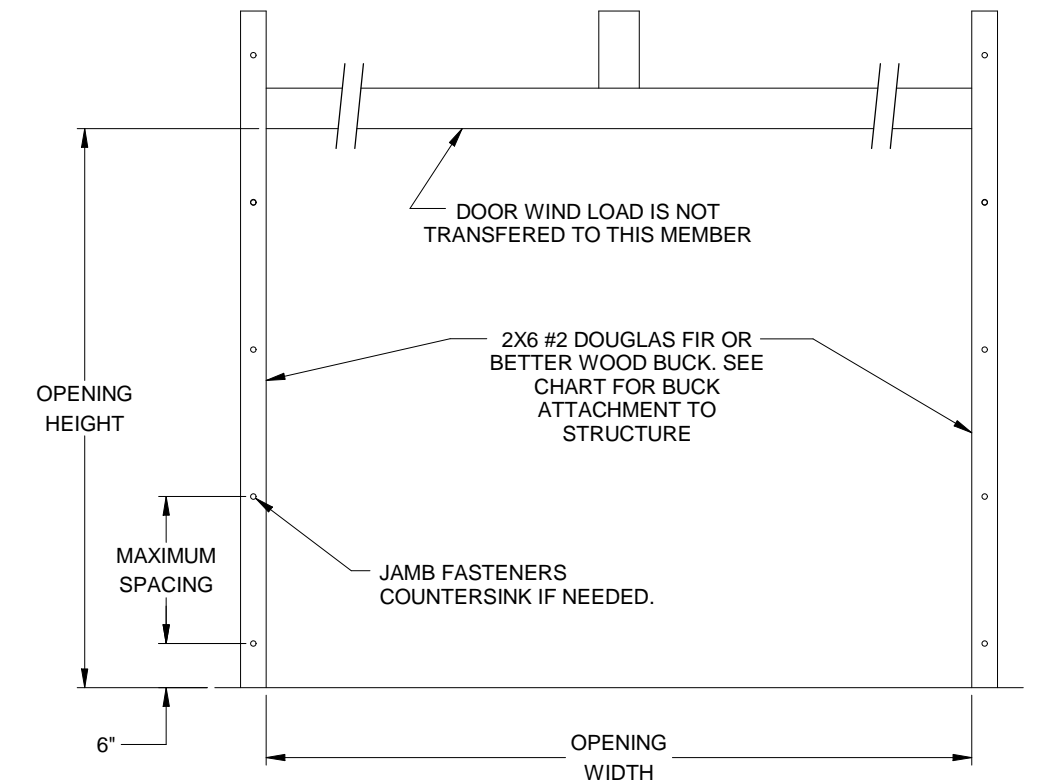
TRACK ASSEMBLY ATTACHMENT TO WOOD BACK JAMB
2" TRACK ANGLE MOUNT TURNED IN SHOWN
3" TRACK ANGLE MOUNT AVAILABLE



TRACK ASSEMBLY ATTACHMENT TO MASONRY JAMB
2" TRACK ANGLE MOUNT TURNED OUT SHOWN
3" TRACK ANGLE MOUNT AVAILABLE



TRACK ASSEMBLY ATTACHMENT TO WOOD BACK JAMB
2" TRACK ANGLE MOUNT TURNED OUT SHOWN
3" TRACK ANGLE MOUNT AVAILABLE



JAMB ATTACHMENT

JAMB ATTACHMENT NOTES

1. MAXIMUM POSITIVE LOAD PER JAMB = (16'-2" X 43.3 PSF) / 2 = 350 LBS PER FOOT
2. MAXIMUM NEGATIVE LOAD PER JAMB = (16'-2" X -53.3 PSF) / 2 = 431 LBS PER FOOT.
3. DESIGN OF THE SUPPORTING STRUCTURE SHALL BE THE SOLE RESPONSIBILITY OF THE BUILDING DESIGNER AND SHALL BE DESIGNED FOR THE JAMB LOADS LISTED IN NOTES 1 AND 2.
4. ALTERNATE JAMB ATTACHMENTS MAY BE USED IF APPROVED BY A REGISTERED PROFESSIONAL ENGINEER.
5. DASMA TECHNICAL DATA SHEET TDS-161 MAY BE USED FOR ALTERNATE JAMB ATTACHMENTS.
6. 3/8" DIAMETER LAG SCREWS REQUIRED 1/16" PILOT HOLE AND 1-1/2" MINIMUM EDGE DISTANCE.

2X6 ATTACHMENT TO STRUCTURE						
STRUCTURE TYPE	FASTENER TYPE	MINIMUM EMBEDMENT	MINIMUM EDGE DISTANCE	MINIMUM ON CENTER SPACING	DIMENSION A (MAXIMUM ON CENTER SPACING)	ALLOWABLE TENSION LOAD
2500 PSI MIN. CONCRETE	1/4" TAPCON+ (PLUS) WITH 1-1/8" OD WASHER	2"	2.5	6"	23"	691
SOUTHERN PINE	3/8" X 3" LAG WITH 1-1/8" OD WASHER	1.50"	1.50"	1.50"	22"	655
SPRUCE PINE FIR	3/8" X 3" LAG WITH 1-1/8" OD WASHER	1.50"	1.50"	1.50"	16"	482

Scott A. Brown P.E.
F.P.E #65940
698 Timber Creek Road
Dixon Illinois 61021

SCALE: NONE		TITLE: SPEC, WIND LOAD STEELFORM 26 GA, 24 GA, 20 GA.	
DRAWN BY: G.WEDEKIND		NO. P-2407	SHEET 4 OF 4
CHECKED BY: GW			
DATE: 03/12/12		ECN NO.	DATE