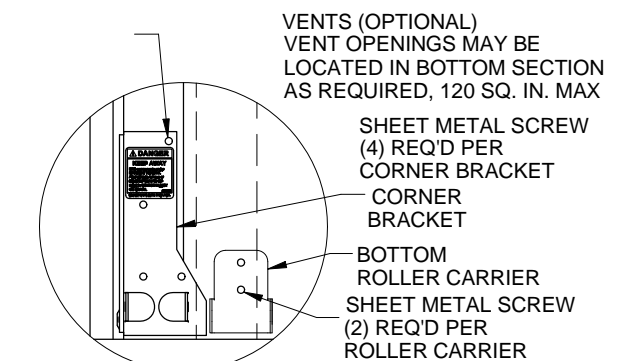
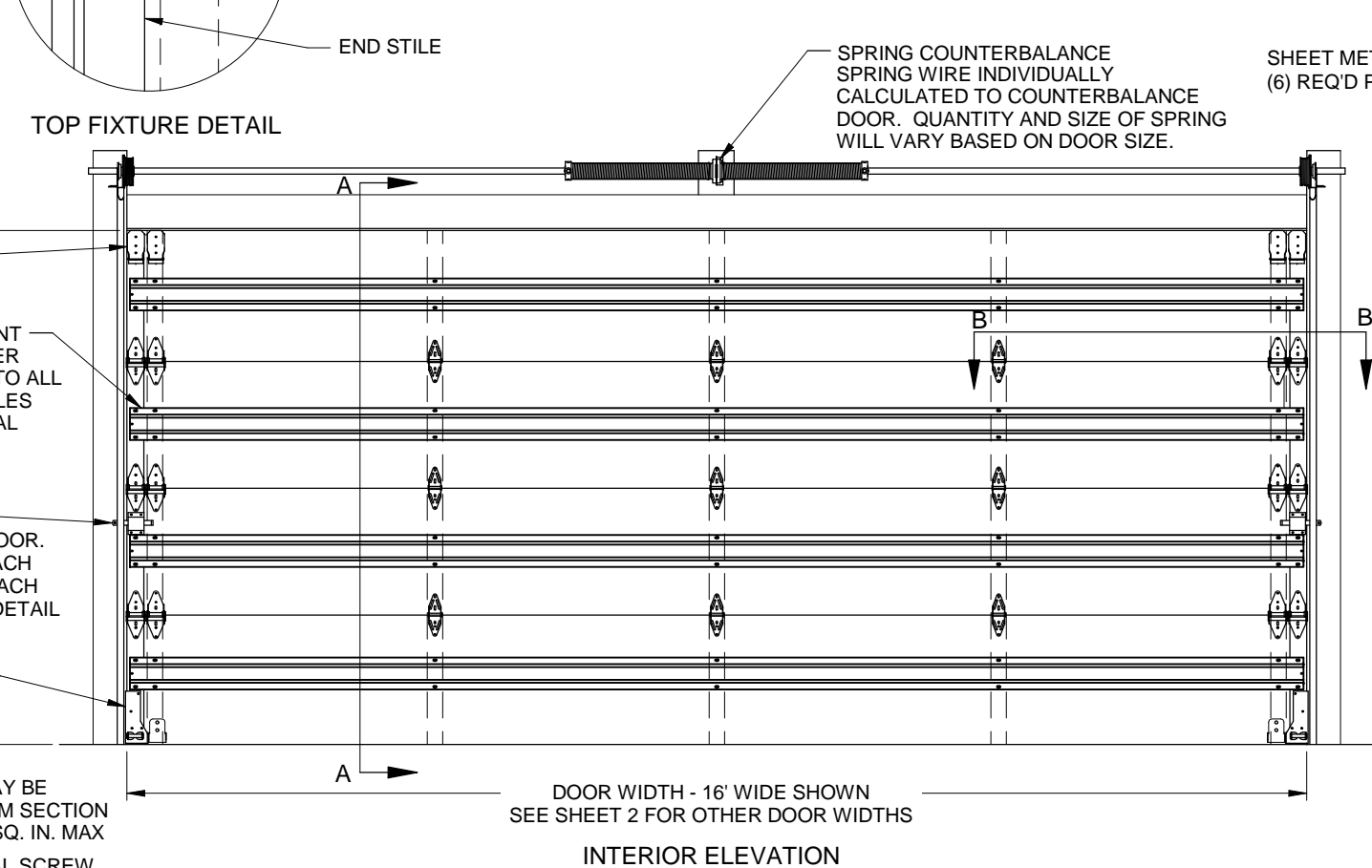


**SECTION A-A**  
 4 SECTION HIGH DOOR SHOWN



| DOOR WIDTH | DESIGN LOAD   |
|------------|---------------|
| 9' - 0"    | + 65.0 - 75.0 |
| 10' - 0"   | + 56.4 - 65.1 |
| 11' - 0"   | + 56.4 - 65.1 |
| 12' - 0"   | + 56.4 - 65.1 |
| 13' - 0"   | + 45.0 - 52.0 |
| 14' - 0"   | + 45.0 - 52.0 |
| 15' - 0"   | + 45.0 - 52.0 |
| 16' - 0"   | + 45.0 - 52.0 |

**LARGE MISSILE IMPACT RESISTANT**

Scott A. Brown P.E.  
 F.P.E #65940  
 698 Timber Creek Road  
 Dixon Illinois 61021

**CORNER BRACKET / ROLLER CARRIER DETAIL**

| REV. | DESCRIPTION              | ECO     | DATE     | ECO: 5807.01 |
|------|--------------------------|---------|----------|--------------|
| C    | UPDATED JAMB ATTACHMENTS | 7804.01 | 10/13/17 |              |
| B    | RELEASED FOR PRODUCTION  | 5807.01 | 06/16/10 |              |
| A    | PRELIMINARY RELEASE      |         | 10/23/09 |              |

SCALE: NONE

DRAWN BY: G. WEDEKIND

CHECKED BY: G. WEDEKIND

DATE: 10/23/09

ECO: 5807.01

**RAYNOR**

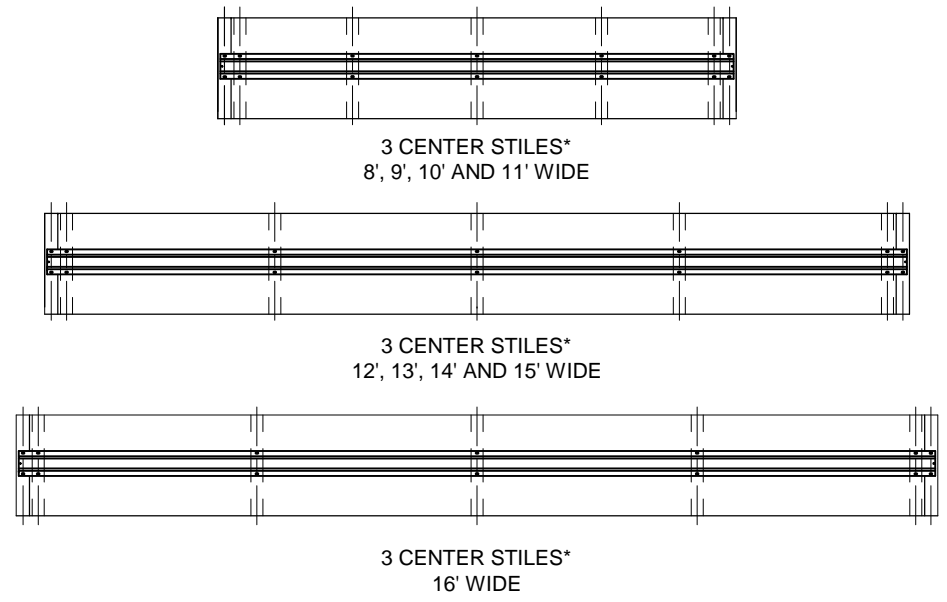
1101 EAST RIVER ROAD  
 DIXON, IL 61021

TITLE:  
 SPEC, WINDLOAD  
 SHOWCASE, MASTERPIECE, TC200

NO. P-3312

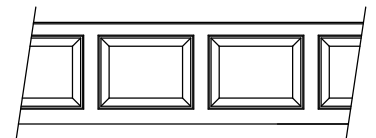
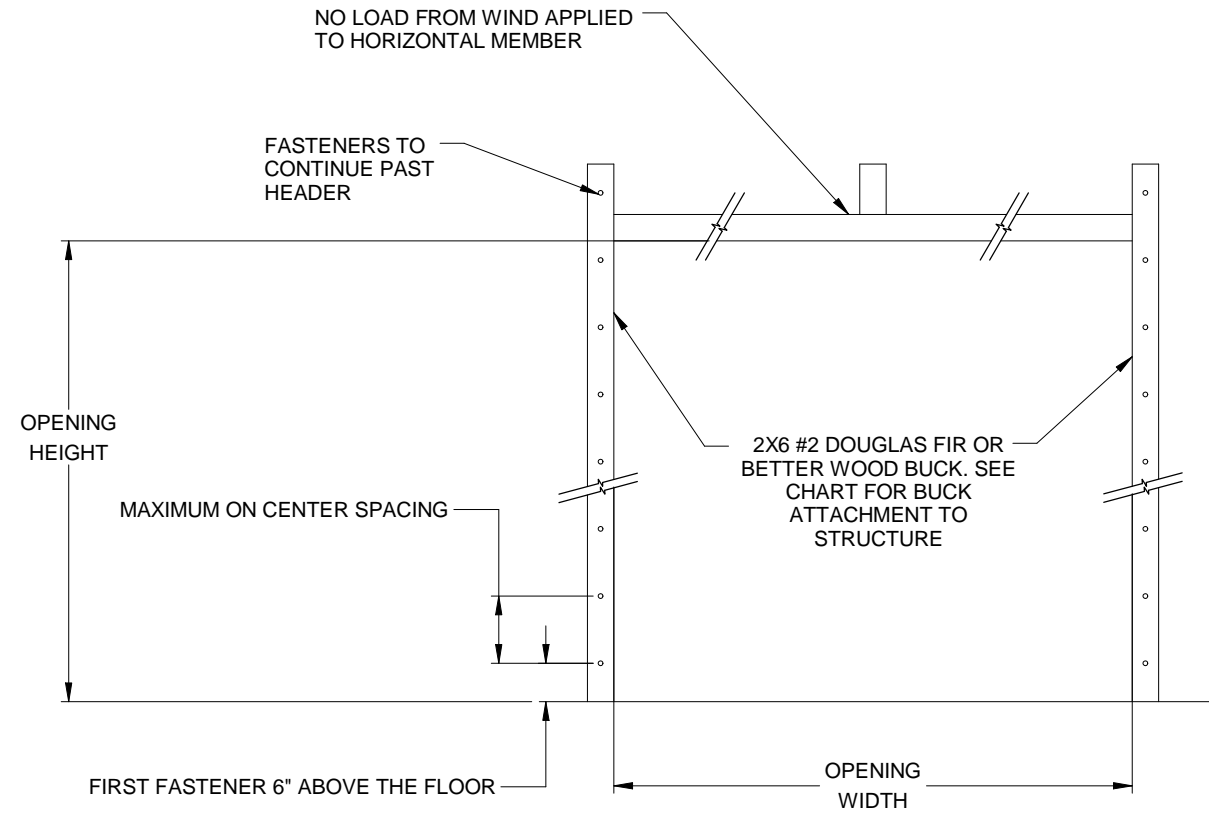
SHEET 1 OF 3

REV C

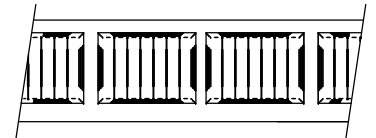


**CENTER STILE LAYOUT  
INTERIOR VIEW**

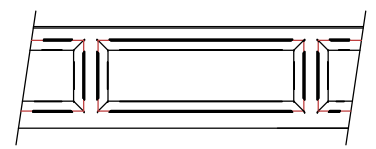
\* 3 CENTER STILES MINIMUM, EXTRA STILES MAY BE REQUIRED  
DEPENDING ON DOOR CONFIGURATION



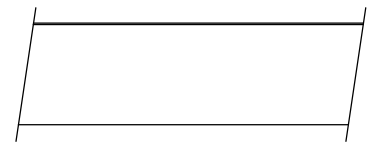
COLONIAL  
PANEL



CARRIAGE  
HOUSE  
PANEL



RANCH  
PANEL



FLUSH  
PANEL

**PANEL OPTIONS  
EXTERIOR VIEW**

**JAMB ATTACHMENT NOTES**

1. MAXIMUM POSITIVE LOAD PER JAMB = (16'-0" X 45.0 PSF) / 2 = 360 LBS PER FOOT
2. MAXIMUM NEGATIVE LOAD PER JAMB = (16'-0" X -52.0 PSF) / 2 = 416 LBS PER FOOT.
3. DESIGN OF THE SUPPORTING STRUCTURE SHALL BE THE SOLE RESPONSIBILITY OF THE BUILDING DESIGNER AND SHALL BE DESIGNED FOR THE JAMB LOADS LISTED IN NOTES 1 AND 2.
4. ALTERNATE JAMB ATTACHMENTS MAY BE USED IF APPROVED BY A REGISTERED PROFESSIONAL ENGINEER.
5. DASMA TECHNICAL DATA SHEET TDS-161 MAY BE USED FOR ALTERNATE JAMB ATTACHMENTS.
6. 3/8" DIAMETER LAG SCREWS REQUIRED 1/16" PILOT HOLE AND 1-1/2" MINIMUM EDGE DISTANCE.

| 2X6 ATTACHMENT TO STRUCTURE |   |                   |                       |                           |   |                        |
|-----------------------------|---|-------------------|-----------------------|---------------------------|---|------------------------|
| STRUCTURE TYPE              | FASTENER TYPE                             | MINIMUM EMBEDMENT | MINIMUM EDGE DISTANCE | MINIMUM ON CENTER SPACING | DIMENSION A (MAXIMUM ON CENTER SPACING) | ALLOWABLE TENSION LOAD |
| 2500 PSI MIN. CONCRETE      | 1/4" TAPCON+ (PLUS) WITH 1-1/8" OD WASHER | 2"                | 2.5                   | 6"                        | 23"                                     | 691                    |
| SOUTHERN PINE               | 3/8" X 3" LAG WITH 1-1/8" OD WASHER       | 1.50"             | 1.50"                 | 1.50"                     | 22"                                     | 655                    |
| SPRUCE PINE FIR             | 3/8" X 3" LAG WITH 1-1/8" OD WASHER       | 1.50"             | 1.50"                 | 1.50"                     | 16"                                     | 482                    |

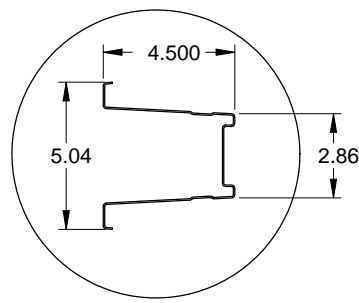
Scott A. Brown P.E.  
F.P.E. #65940  
698 Timber Creek Road  
Dixon Illinois 61021

| REV. | DESCRIPTION | ECO | DATE |
|------|-------------|-----|------|
|      |             |     |      |
|      |             |     |      |

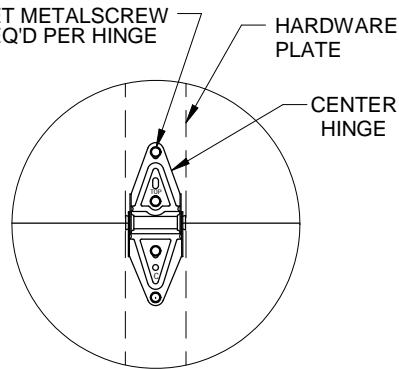
|                         |
|-------------------------|
| SCALE: NONE             |
| DRAWN BY: G. WEDEKIND   |
| CHECKED BY: G. WEDEKIND |
| DATE: 10/23/09          |
| ECO:                    |



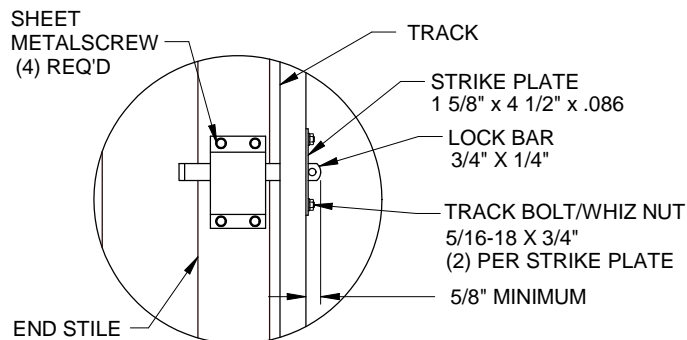
|  |                 |
|--|-----------------|
| TITLE:<br>SPEC, WINDLOAD<br>SHOWCASE, MASTERPIECE, TC200 |                 |
| NO. P-3312   | SHEET<br>2 OF 3 |
| REV<br>C   |                 |



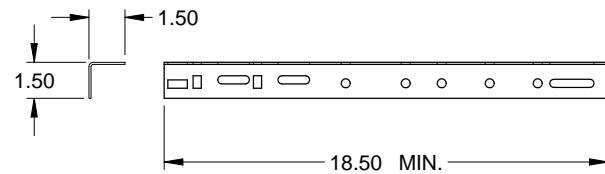
STEEL BOX STRUT DETAIL  
20 GA. (.035" MIN) GALVANIZED  
HIGH TENSILE STEEL 80 KSI MINIMUM YIELD



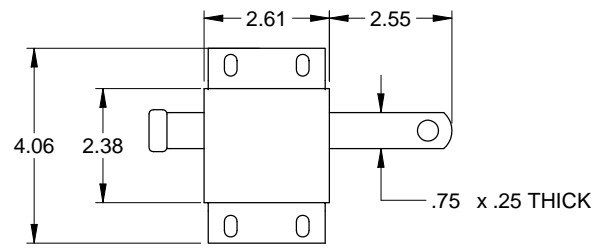
CENTER HINGE DETAIL



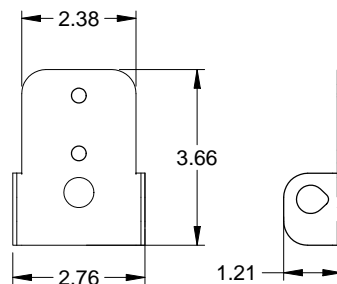
INTERIOR LOCK DETAIL



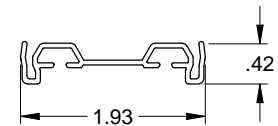
HORIZONTAL TRACK ANGLE  
.086 GALV. STEEL  
HORIZONTAL ANGLE ATTACHED WITH  
5/16" X 3/4" TRACK BOLT AND WHIZ NUT



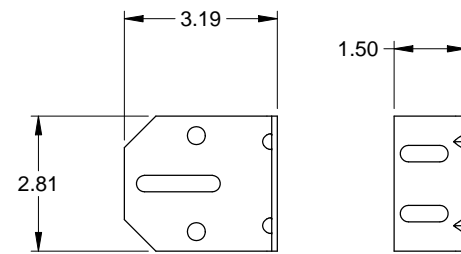
SLIDE LOCK  
CASE .086 GALV. STEEL



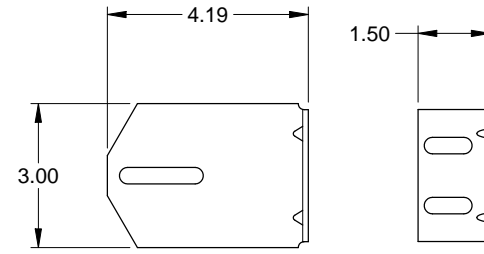
BOTTOM ROLLER  
CARRIER  
.086 GALV. STEEL



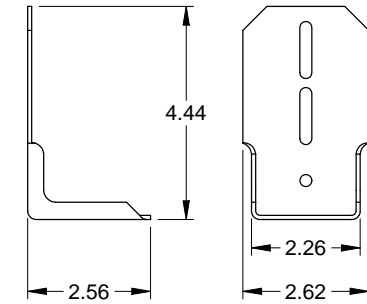
ASTRAGAL RETAINER  
.050 ALUMINUM



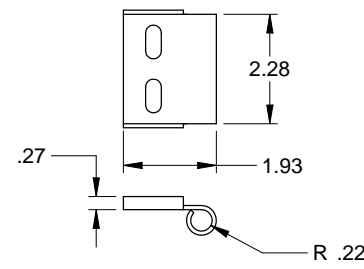
3" TRACK BRACKET  
.116 GALV STEEL



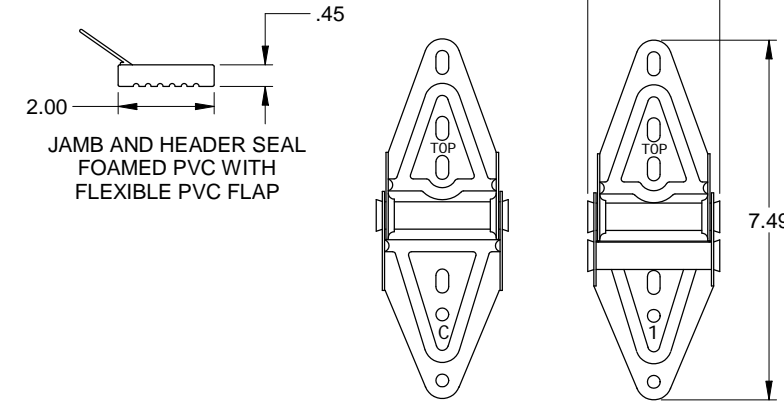
4" TRACK BRACKET  
.116 GALV. STEEL



TOP FIXTURE  
.086 GALV. STEEL

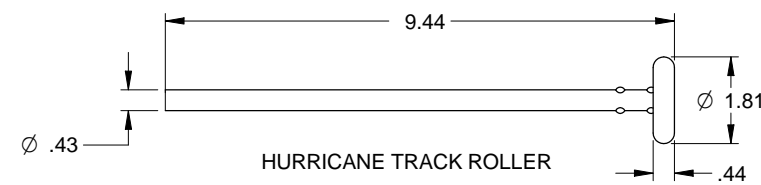


TOP ROLLER CARRIER  
.116 GALV. STEEL  
ATTACHED TO TOP FIXTURE WITH  
(2) TRACK BOLTS AND WHIZ NUTS

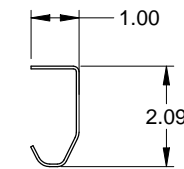


CENTER HINGE  
.045 GALV. STEEL

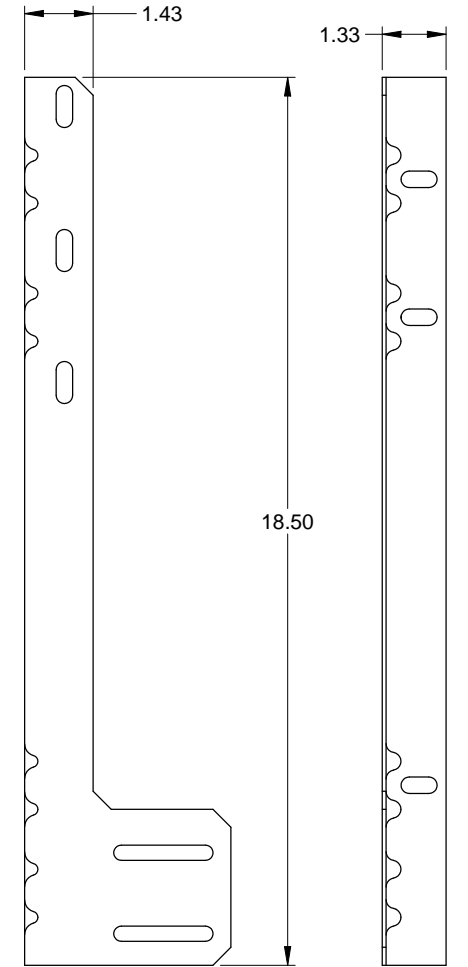
EDGE HINGE  
.086 GALV. STEEL



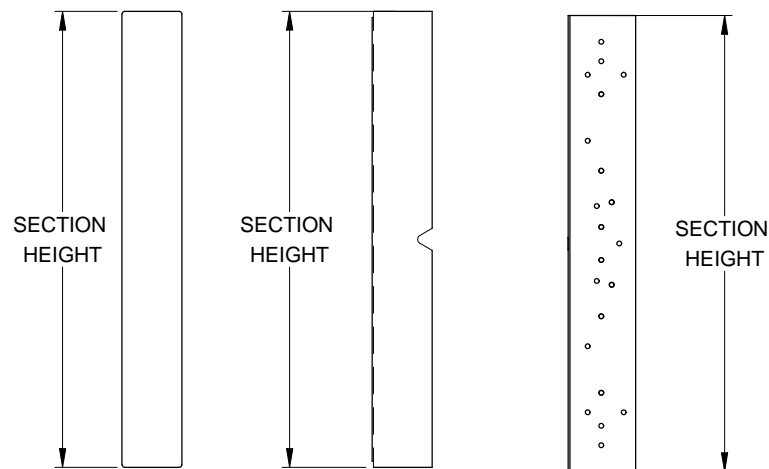
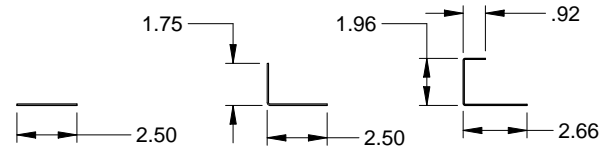
HURRICANE TRACK ROLLER



TRACK  
.086 GALV. STEEL



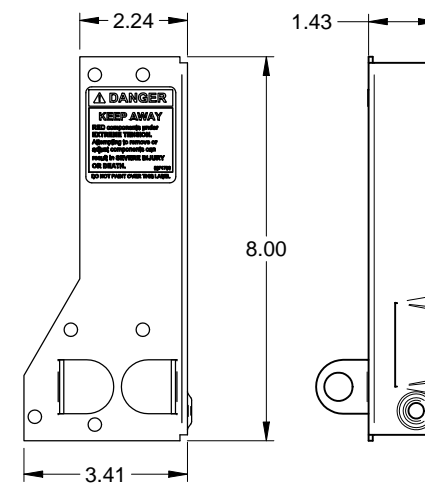
JAMB ANGLE  
.078 GALV. STEEL



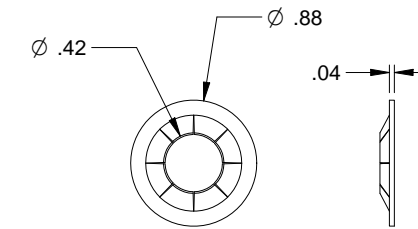
HARDWARE PLATE  
.055 GALV. STEEL

EDGE HARDWARE PLATE  
.055 GALV. STEEL

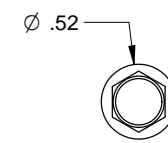
END STILE  
.043 GALV. STEEL



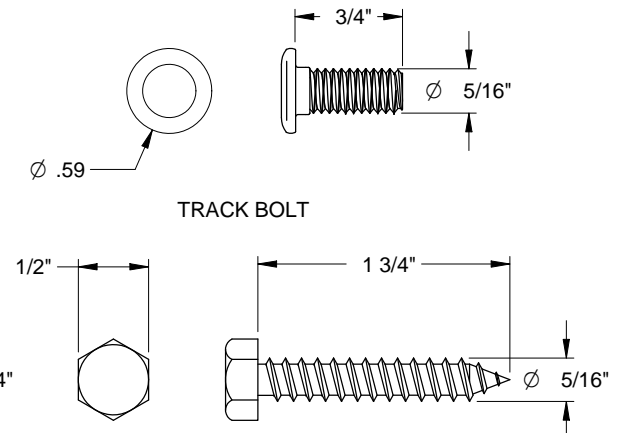
CORNER BRACKET  
.086 GALV. STEEL



RETAINING NUT



SHEET METAL SCREW



TRACK BOLT

HEX HEAD LAG SCREW

Scott A. Brown P.E.  
F.P.E #65940  
698 Timber Creek Road  
Dixon Illinois 61021

| REV. | DESCRIPTION | ECO | DATE |
|------|-------------|-----|------|
|      |             |     |      |

|                         |
|-------------------------|
| SCALE: NONE             |
| DRAWN BY: G. WEDEKIND   |
| CHECKED BY: G. WEDEKIND |
| DATE: 10/23/09          |
| ECO:                    |



|  |          |
|--|----------|
| TITLE:<br>SPEC, WINDLOAD<br>SHOWCASE, MASTERPIECE, TC200 |          |
| NO. P-3312   | REV<br>C |
| SHEET<br>3 OF 3  |          |