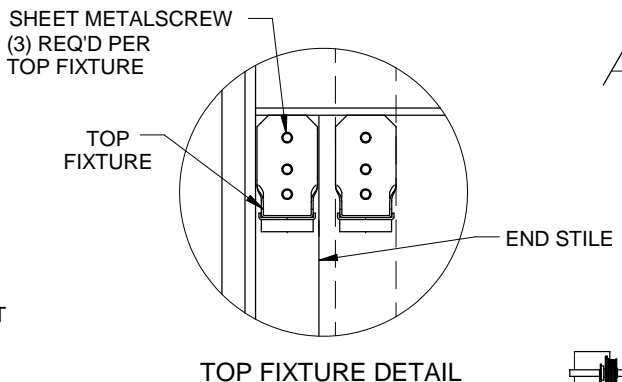


Scott A. Brown P.E.  
F.P.E #65940  
698 Timber Creek Road  
Dixon Illinois 61021

**INTERIOR SKIN**  
.0159 THICK G-40 GALVANIZED STEEL WITH AN EPOXY PRIMER AND BAKED ON POLYESTER FINISH WHICH IS ROLL-FORMED WITH WOOD GRAIN TEXTURE AND STAMPED WITH EMBOSSED PANELS FOR SHOWCASE AND MASTERPIECE OR SMOOTH FOR TC200. MINIMUM YIELD STRENGTH = 29070 PSI

**EXTERIOR SKIN**  
.0159 THICK G-40 GALVANIZED STEEL WITH AN EPOXY PRIMER AND BAKED ON POLYESTER FINISH WHICH IS ROLL-FORMED WITH WOOD GRAIN TEXTURE. MINIMUM YIELD STRENGTH = 29070 PSI.



**DOOR HEIGHT**  
7'-0" HIGH SHOWN  
OTHER DOOR HEIGHTS AVAILABLE UP TO 16'-0" USING 19-1/6", 19-1/2" OR 21" HIGH SECTIONS

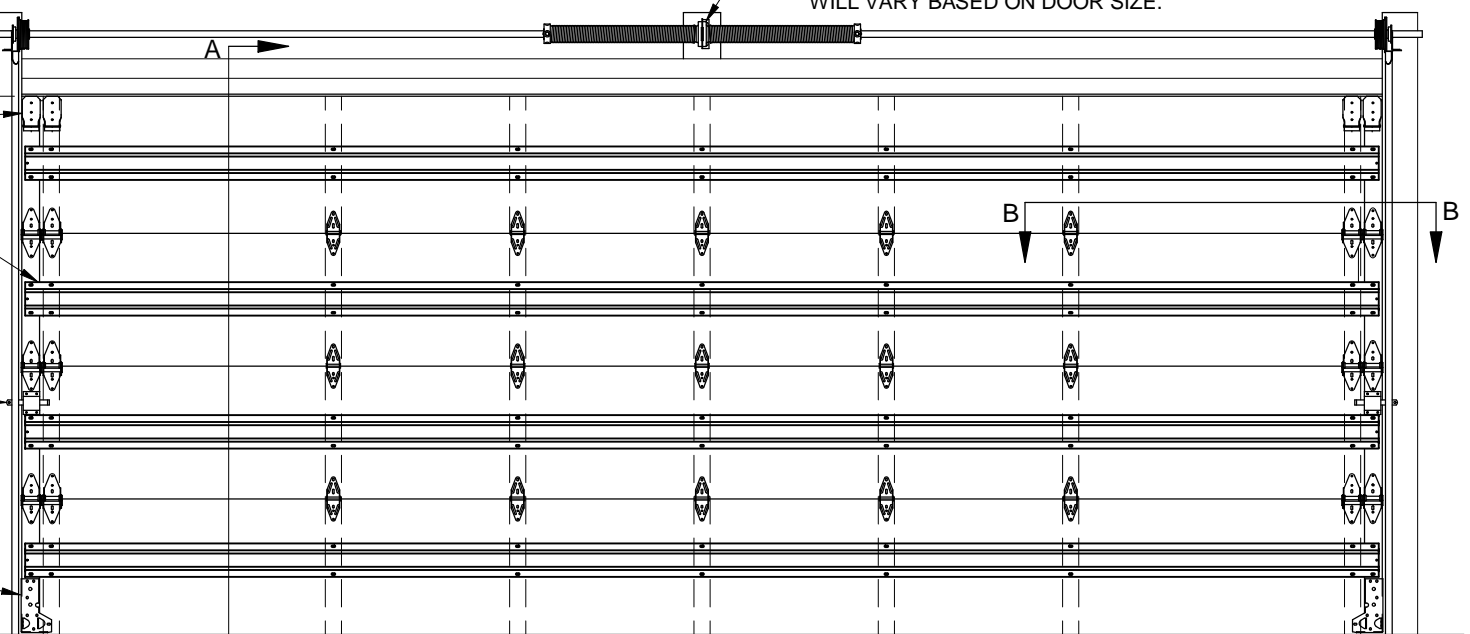
**TOP FIXTURE**  
SEE DETAIL ON SHT 3

**STEEL REINFORCEMENT**  
ONE (1) BOX STRUT PER SECTION, FASTENED TO ALL CENTER AND END STILES USING (2) SHEET METAL SCREWS AT EACH LOCATION

**INTERIOR LOCK**  
TWO (2) REQ'D PER DOOR. LOCATE OPPOSITE EACH OTHER TO ENGAGE EACH TRACK 5/8" MIN. SEE DETAIL ON SHT 3

**CORNER BRACKET**  
SEE DETAIL ON SHT 3

**VENTS (OPTIONAL)**  
VENT OPENINGS MAY BE LOCATED IN BOTTOM SECTION AS REQUIRED, 120 SQ. IN. MAX



DOOR WIDTH	DESIGN LOAD
UP TO 18'-2"	+ 43.5 - 50.0

DOORS TESTED PER TAS 202 FOR STATIC AIR PRESSURE TESTED PER TAS 201 AND TAS 203 FOR LARGE MISSILE IMPACT AND CYCLIC WIND PRESSURE  
LARGE MISSILE IMPACT RESISTANT

REV.	DESCRIPTION	ECO	DATE	ECO: 5807.01
C	UPDATED JAMB DETAILS	7804.01	10/13/17	
B	RELEASED FOR PRODUCTION	5807.01	06/16/10	
A	PRELIMINARY RELEASE		10/23/09	

SCALE: NONE

DRAWN BY: G. WEDEKIND

CHECKED BY: G. WEDEKIND

DATE: 10/23/09

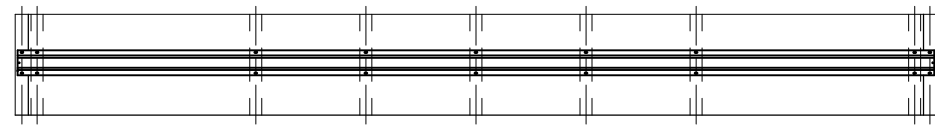
RAYNOR  
1101 EAST RIVER ROAD  
DIXON, IL. 61021

TITLE:  
SPEC, WINDLOAD  
SHOWCASE, MASTERPIECE, TC200

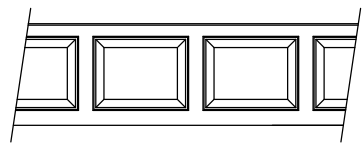
NO. P-3314

SHEET 1 OF 3

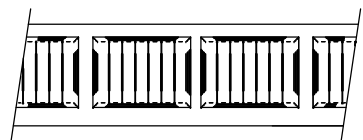
REV C



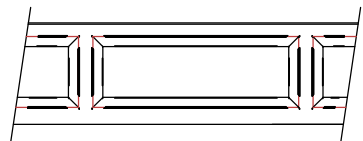
5 CENTER STILES  
16' - 1" to 18' - 2" WIDE  
CENTER STILE LAYOUT  
INTERIOR VIEW



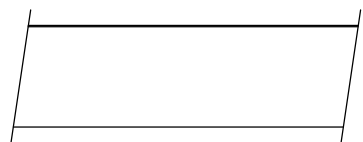
COLONIAL  
PANEL



CARRIAGE  
HOUSE  
PANEL

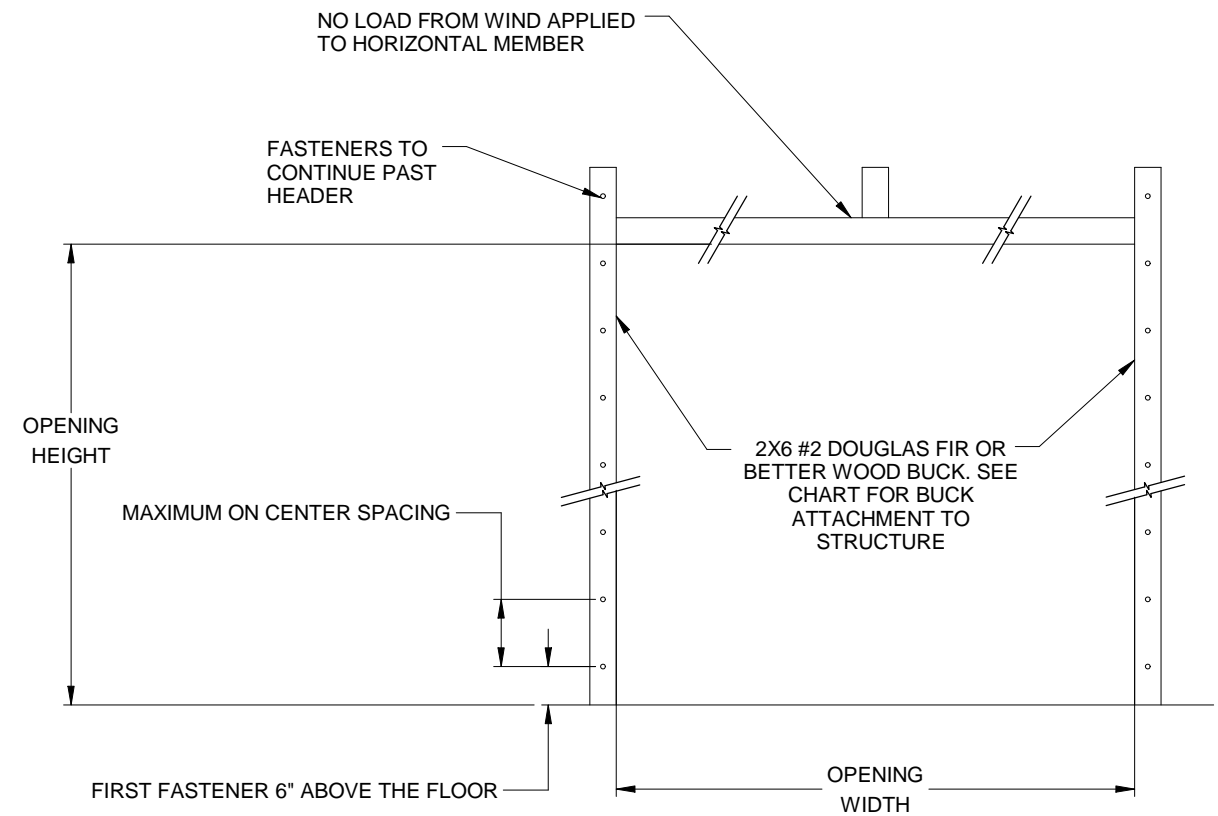


RANCH  
PANEL



FLUSH  
PANEL

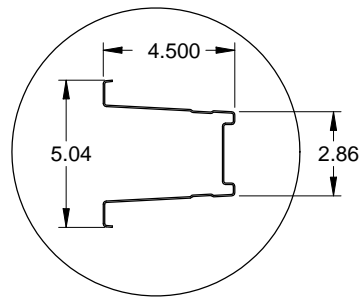
PANEL OPTIONS  
EXTERIOR VIEW



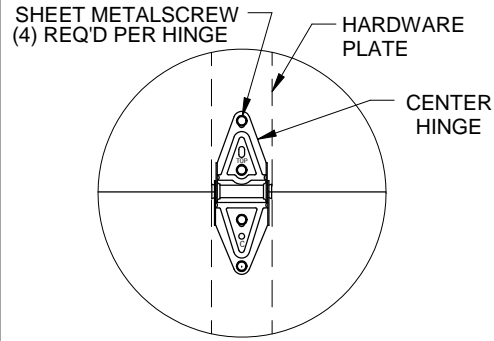
JAMB ATTACHMENT NOTES

1. MAXIMUM POSITIVE LOAD PER JAMB = (18'-0" X 43.5 PSF) / 2 = 392 LBS PER FOOT
2. MAXIMUM NEGATIVE LOAD PER JAMB = (18' -0" X -50.0 PSF) / 2 = 450 LBS PER FOOT.
3. DESIGN OF THE SUPPORTING STRUCTURE SHALL BE THE SOLE RESPONSIBILITY OF THE BUILDING DESIGNER AND SHALL BE DESIGNED FOR THE JAMB LOADS LISTED IN NOTES 1 AND 2.
4. ALTERNATE JAMB ATTACHMENTS MAY BE USED IF APPROVED BY A REGISTERED PROFESSIONAL ENGINEER.
5. DASMA TECHNICAL DATA SHEET TDS-161 MAY BE USED FOR ALTERNATE JAMB ATTACHMENTS.
6. 3/8" DIAMETER LAG SCREWS REQUIRED 1/16" PILOT HOLE AND 1-1/2" MINIMUM EDGE DISTANCE.

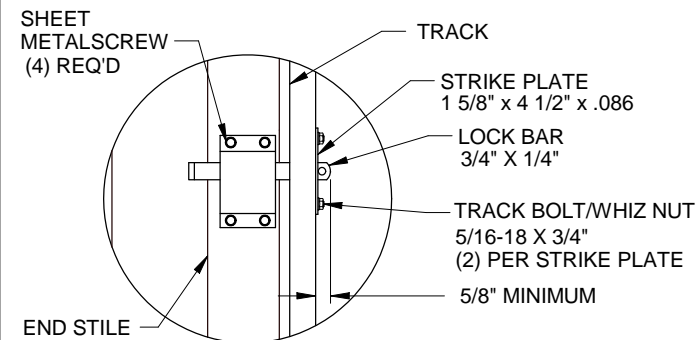
2X6 ATTACHMENT TO STRUCTURE						
STRUCTURE TYPE	FASTENER TYPE	MINIMUM EMBEDMENT	MINIMUM EDGE DISTANCE	MINIMUM ON CENTER SPACING	DIMENSION A (MAXIMUM ON CENTER SPACING)	ALLOWABLE TENSION LOAD
2500 PSI MIN. CONCRETE	1/4" TAPCON+ (PLUS) WITH 1-1/8" OD WASHER	2"	2.5	6"	21"	691
SOUTHERN PINE	3/8" X 3" LAG WITH 1-1/8" OD WASHER	1.50"	1.50"	1.50"	20"	655
SPRUCE PINE FIR	3/8" X 3" LAG WITH 1-1/8" OD WASHER	1.50"	1.50"	1.50"	14"	482



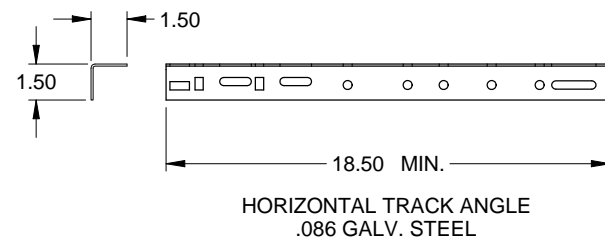
STEEL BOX STRUT DETAIL  
18 GA. (.049" MIN) GALVANIZED  
HIGH TENSILE STEEL 80 KSI MINIMUM YIELD



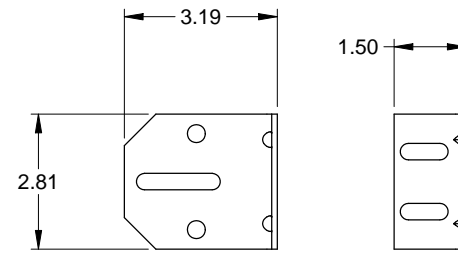
CENTER HINGE DETAIL



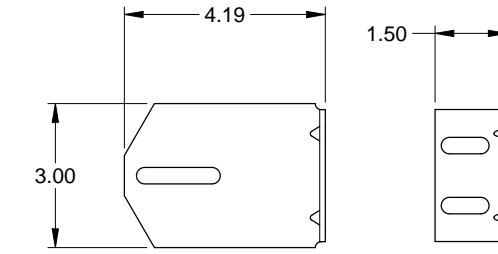
INTERIOR LOCK DETAIL



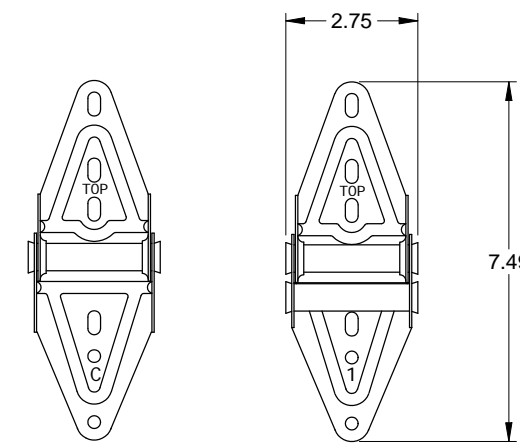
HORIZONTAL TRACK ANGLE  
.086 GALV. STEEL  
HORIZONTAL ANGLE ATTACHED WITH  
5/16" X 3/4" TRACK BOLT AND WHIZ NUT



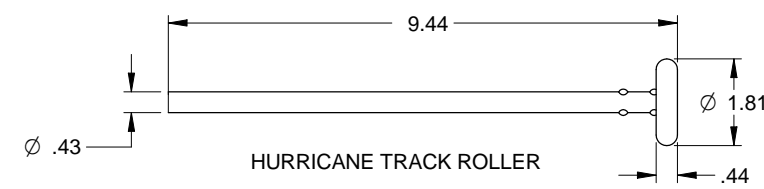
3" TRACK BRACKET  
.116 GALV. STEEL



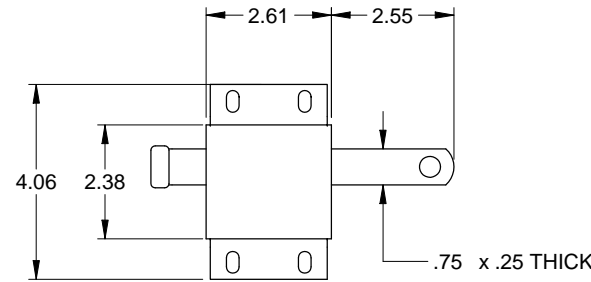
4" TRACK BRACKET  
.116 GALV. STEEL



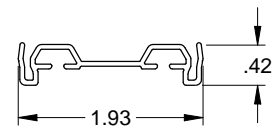
CENTER HINGE  
.045 GALV. STEEL  
EDGE HINGE  
.086 GALV. STEEL



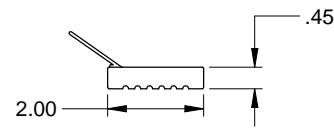
HURRICANE TRACK ROLLER



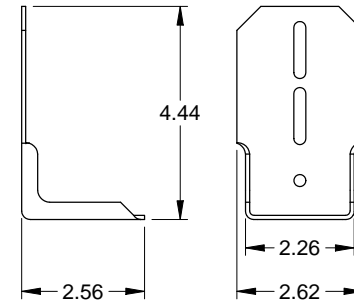
SLIDE LOCK  
CASE .086 GALV. STEEL



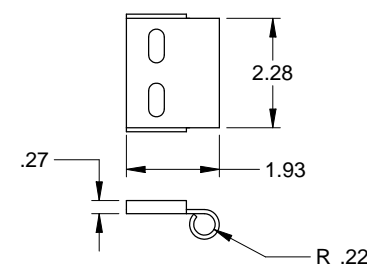
ASTRAGAL RETAINER  
.050 ALUMINUM



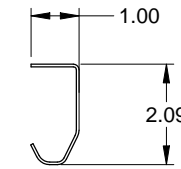
JAMB AND HEADER SEAL  
FOAMED PVC WITH FLEXIBLE PVC FLAP



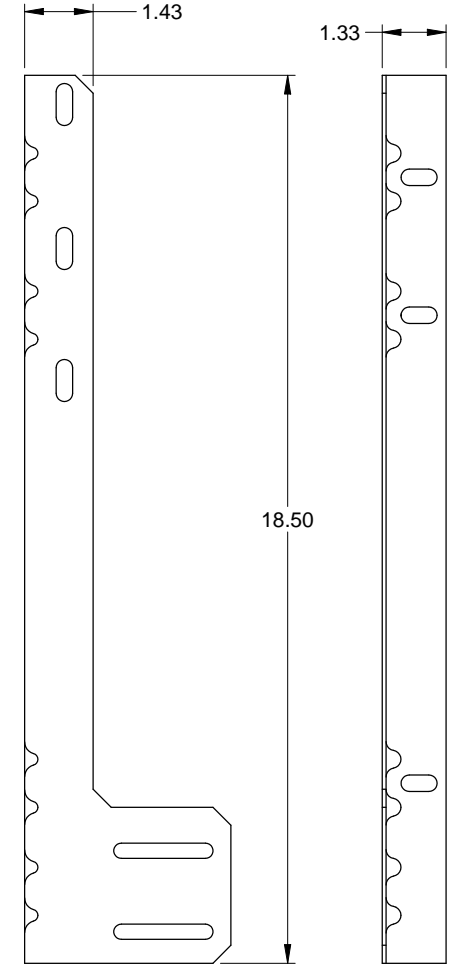
TOP FIXTURE  
.086 GALV. STEEL



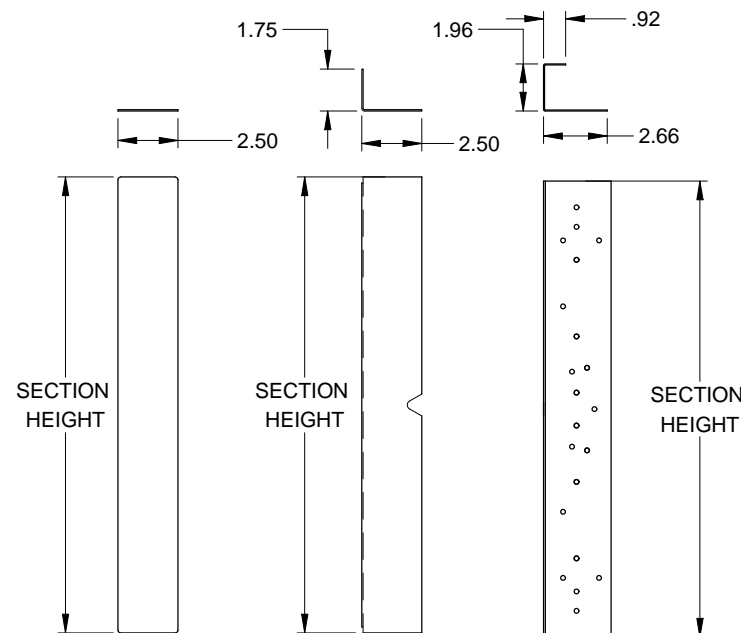
ROLLER CARRIER  
.116 GALV. STEEL  
ATTACHED TO TOP FIXTURE WITH  
(2) TRACK BOLTS AND WHIZ NUTS



TRACK  
.086 GALV. STEEL



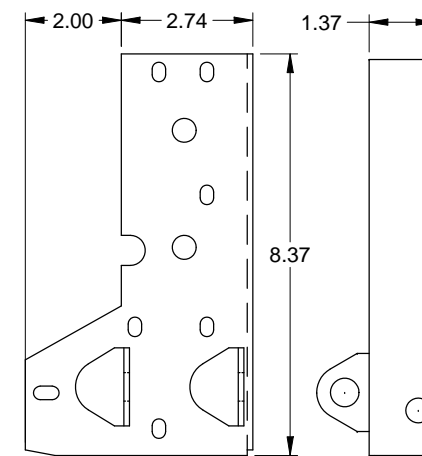
JAMB ANGLE  
.078 GALV. STEEL



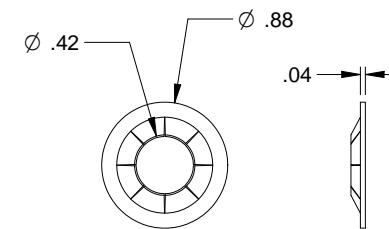
HARDWARE PLATE  
.055 GALV. STEEL

EDGE HARDWARE PLATE  
.055 GALV. STEEL

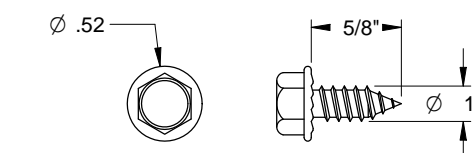
END STILE  
.043 GALV. STEEL



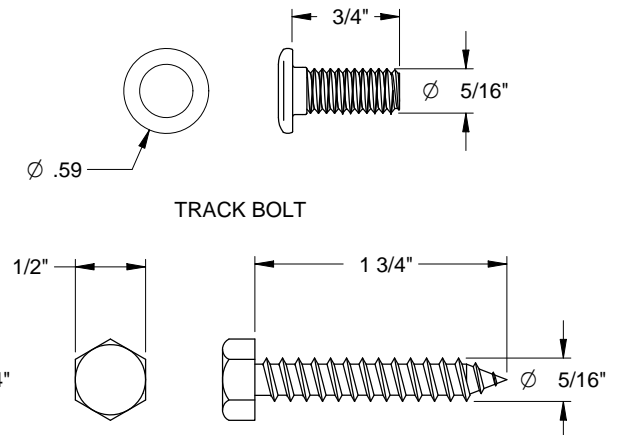
CORNER BRACKET  
.116 GALV. STEEL



RETAINING NUT



SHEET METAL SCREW



TRACK BOLT

HEX HEAD LAG SCREW

Scott A. Brown P.E.  
F.P.E #65940  
698 Timber Creek Road  
Dixon Illinois 61021

REV.	DESCRIPTION	ECO	DATE

SCALE: NONE
DRAWN BY: G. WEDEKIND
CHECKED BY: G. WEDEKIND
DATE: 10/23/09
ECO:



TITLE: SPEC, WINDLOAD SHOWCASE, MASTERPIECE, TC200	
NO. P-3314	REV C
SHEET 3 OF 3	