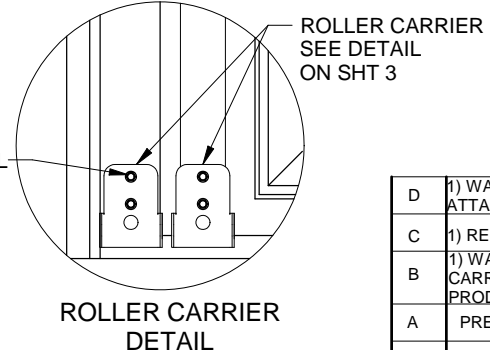


MAXIMUM DOOR WIDTH	DESIGN LOAD	
16' - 0"	+39.3	-43.8

LARGE MISSILE IMPACT RESISTANT

Scott A. Brown P.E.
 F.P.E #65940
 698 Timber Creek Road
 Dixon Illinois 61021

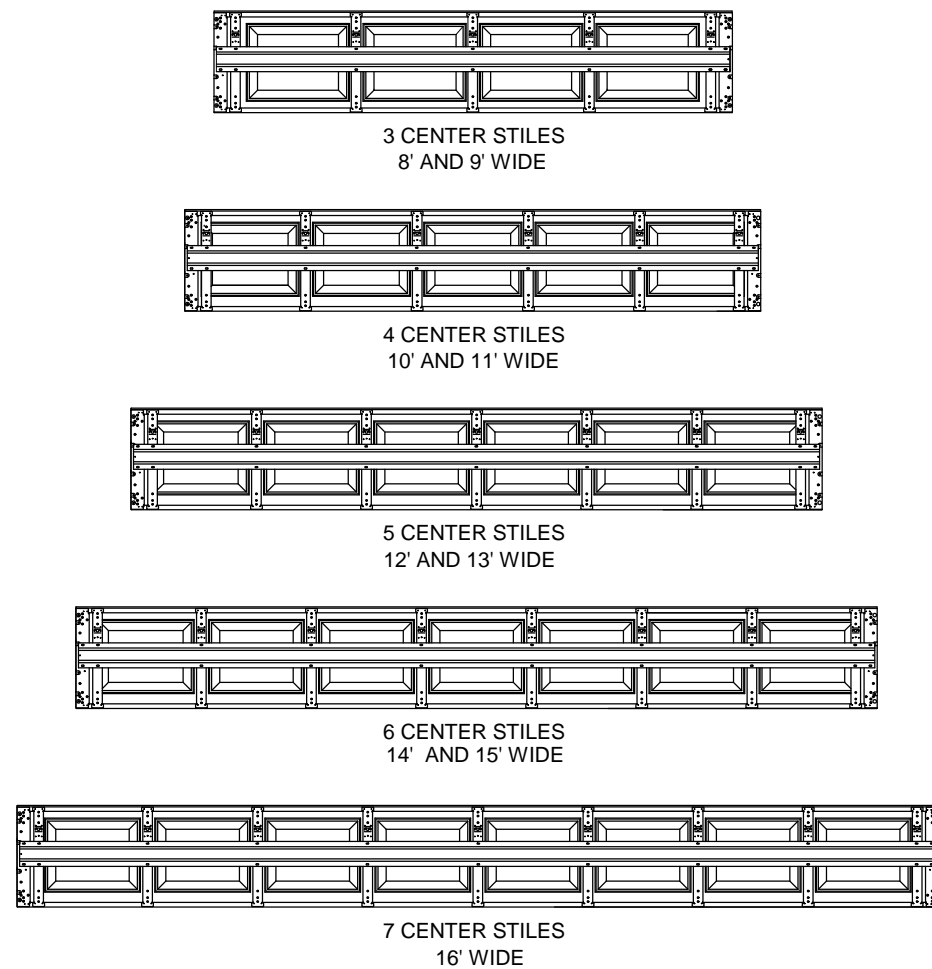


REV.	DESCRIPTION	ECO	DATE
D	1) WAS RICHARD A BAUMANN, P.E., 2) UPDATED JAMB ATTACHMENTS	7804.01	10/02/17
C	1) RE-TESTED 16' WIDE DOOR, PRESSURE WAS 37/-37	5828.01	06/11/10
B	1) WAS 16' MAX DOOR HEIGHT, 2) CLARIFIED ROLLER CARRIER ATTACHMENT. 3) RELEASED FOR PRODUCTION	5828.01	06/11/10
A	PRELIMINARY RELEASE		05/10/10

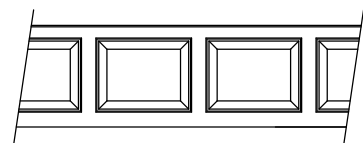
SCALE: NONE
 DRAWN BY: G. WEDEKIND
 CHECKED BY: G. WEDEKIND
 DATE: 05/10/10
 ECO: 5828.01



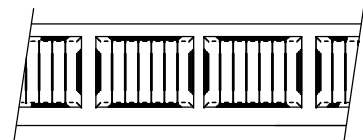
TITLE: SPEC, WINDLOAD BUILDMARK		
NO. P-3318	SHEET 1 OF 3	REV D



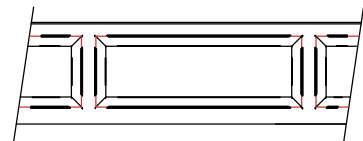
CENTER STILE LAYOUT
INTERIOR VIEW



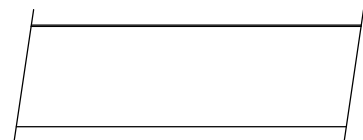
COLONIAL
PANEL



CARRIAGE HOUSE
PANEL

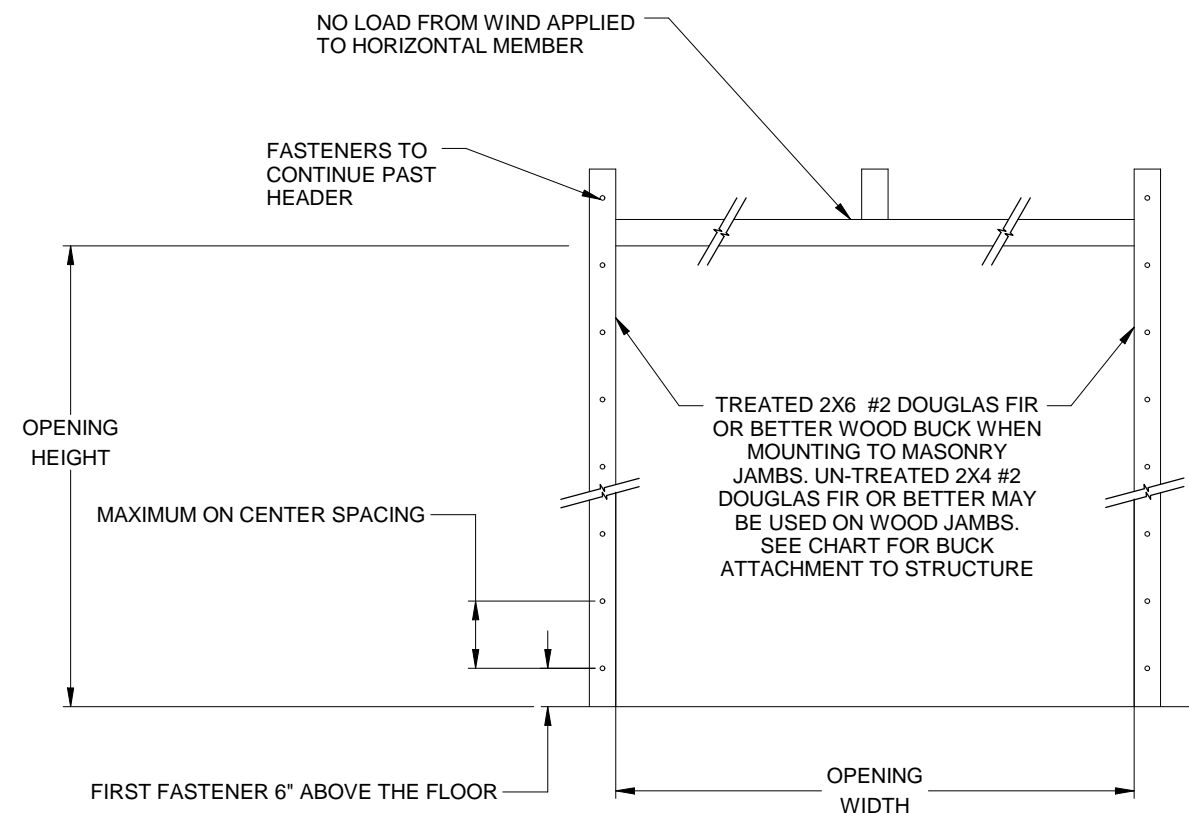


RANCH
PANEL



FLUSH
PANEL

PANEL OPTIONS
EXTERIOR VIEW



JAMB ATTACHMENT NOTES

1. MAXIMUM POSITIVE LOAD PER JAMB = (16'-0" X 39.3 PSF) / 2 = 315 LBS PER FOOT
2. MAXIMUM NEGATIVE LOAD PER JAMB = (16'-0" X -43.8 PSF) / 2 = -351 LBS PER FOOT.
3. DESIGN OF THE SUPPORTING STRUCTURE SHALL BE THE SOLE RESPONSIBILITY OF THE BUILDING DESIGNER AND SHALL BE DESIGNED FOR THE JAMB LOADS LISTED IN NOTES 1 AND 2.
4. ALTERNATE JAMB ATTACHMENTS MAY BE USED IF APPROVED BY A REGISTERED PROFESSIONAL ENGINEER.
5. DASMA TECHNICAL DATA SHEET TDS-161 MAY BE USED FOR ALTERNATE JAMB ATTACHMENTS.
6. 3/8" DIAMETER LAG SCREWS REQUIRE 1/16" DIAMETER PILOT HOLE AND 1-1/2" MINIMUM EDGE DISTANCE.

2X6 ATTACHMENT TO STRUCTURE						
STRUCTURE TYPE	FASTENER TYPE	MINIMUM EMBEDMENT	MINIMUM EDGE DISTANCE	MINIMUM ON CENTER SPACING	DIMENSION A (MAXIMUM ON CENTER SPACING)	ALLOWABLE TENSION LOAD
2500 PSI MIN. CONCRETE	1/4" TAPCON+ (PLUS) WITH 1-1/8" OD WASHER	2"	2.5"	6"	24"	691
SOUTHERN PINE	3/8" X 3" LAG WITH 1-1/8" OD WASHER	1.50"	1.50"	1.50"	24"	655
SPRUCE PINE FIR	3/8" X 3" LAG WITH 1-1/8" OD WASHER	1.50"	1.50"	1.50"	18"	482

Scott A. Brown P.E.
F.P.E #65940
698 Timber Creek Road
Dixon Illinois 61021

REV.	DESCRIPTION	ECO	DATE

SCALE: NONE
DRAWN BY: G. WEDEKIND
CHECKED BY: G. WEDEKIND
DATE: 05/10/10
ECO:

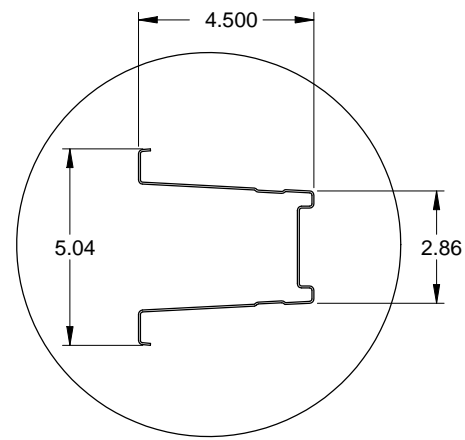


TITLE:
SPEC, WINDLOAD
BUILDMARK

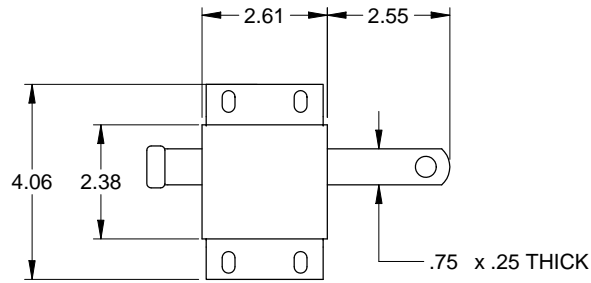
NO. P-3318

SHEET
2 OF 3

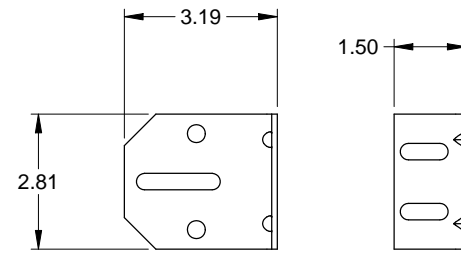
REV
D



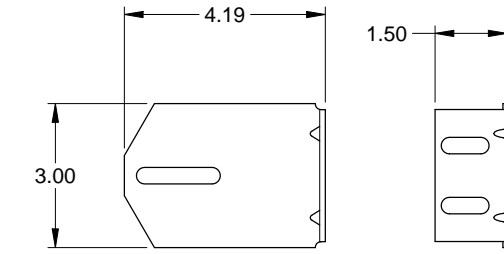
STEEL BOX STRUT DETAIL
20 GA. (.035" MIN) GALVANIZED
HIGH TENSILE STEEL
80 KSI MINIMUM YIELD



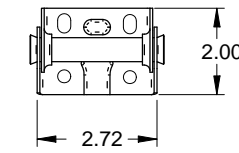
SLIDE LOCK
CASE .086 GALV. STEEL



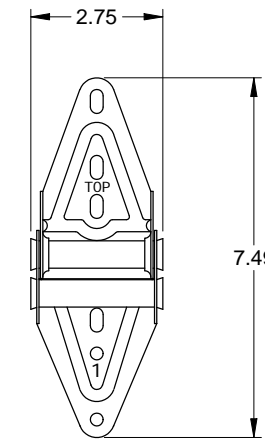
3" TRACK BRACKET
.116 GALV. STEEL



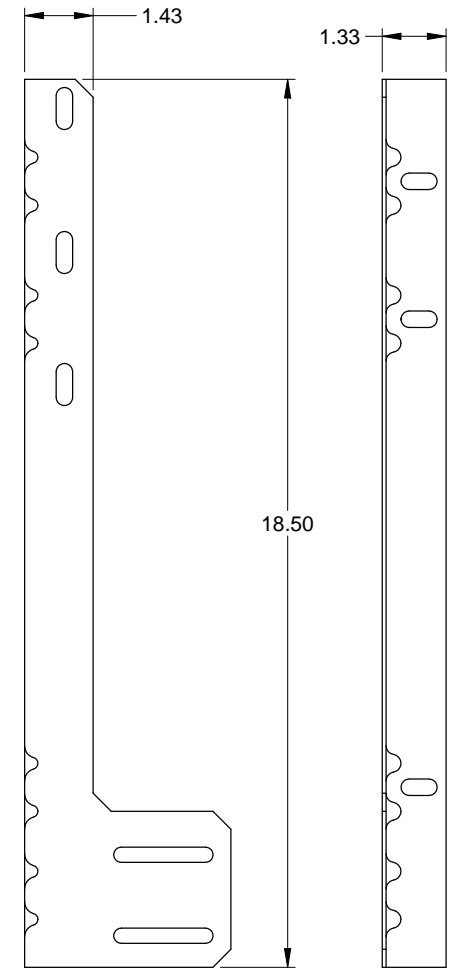
4" TRACK BRACKET
.116 GALV. STEEL



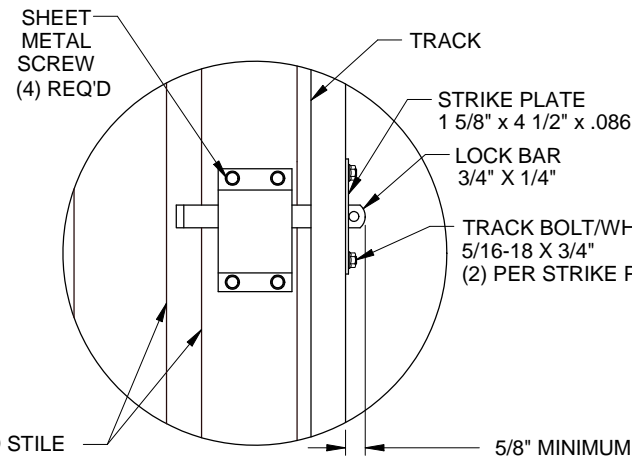
CENTER HINGE
.045 GALV. STEEL



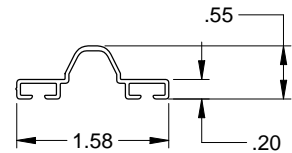
EDGE HINGE
.086 GALV. STEEL



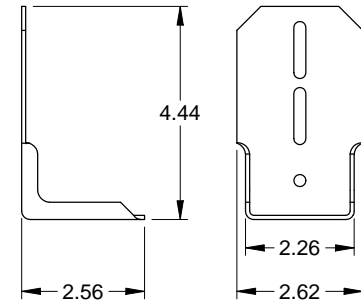
JAMB ANGLE
.078 GALV. STEEL



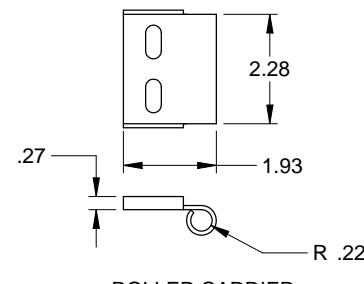
INTERIOR LOCK
DETAIL



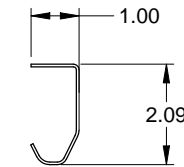
ASTRAGAL RETAINER
.039 ALUMINUM



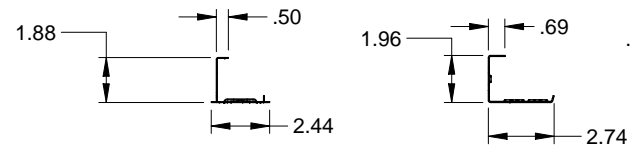
TOP FIXTURE
.086 GALV. STEEL



ROLLER CARRIER
.116 GALV. STEEL
ATTACHED TO TOP FIXTURE WITH
(2) TRACK BOLTS AND WHIZ NUTS



TRACK
.086 GALV. STEEL

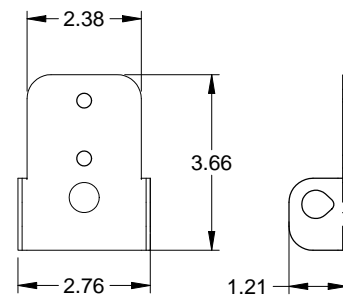


SECTION HEIGHT

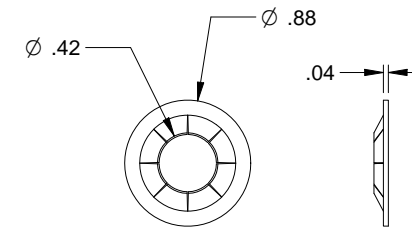
SECTION HEIGHT

CENTER STILE
.034 GALV. STEEL

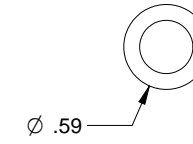
END STILE
.043 GALV. STEEL



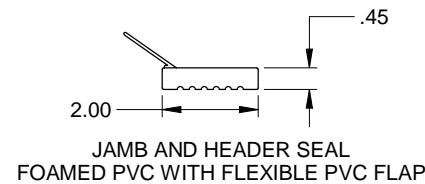
ROLLER CARRIER
.086 GALV. STEEL



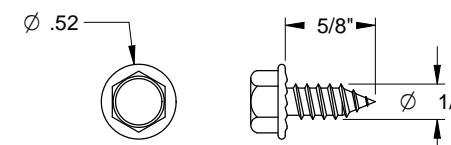
RETAINING NUT



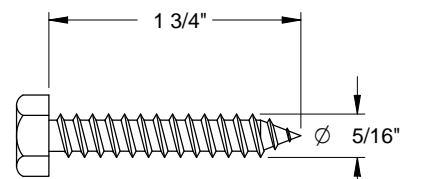
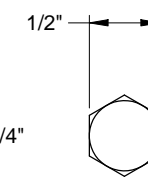
TRACK BOLT



JAMB AND HEADER SEAL
FOAMED PVC WITH FLEXIBLE PVC FLAP



SHEET METAL SCREW



HEX HEAD LAG SCREW

Scott A. Brown P.E.
F.P.E #65940
698 Timber Creek Road
Dixon Illinois 61021

REV.	DESCRIPTION	ECO	DATE

SCALE: NONE
DRAWN BY: G. WEDEKIND
CHECKED BY: G. WEDEKIND
DATE: 05/10/10
ECO:



TITLE:
SPEC, WINDLOAD
BUILDMARK

NO. P-3318

SHEET
3 OF 3

REV
D