

Scott A. Brown P.E.
F.P.E #65940
698 Timber Creek Road
Dixon Illinois 61021

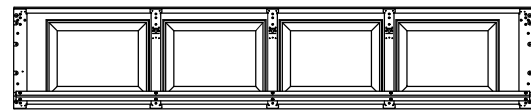
REV.	DESCRIPTION	ECO	DATE
C	1) WAS RICHARD A BAUMANN, P.E., 2) UPDATED JAMB ATTACHMENTS	7804.01	10/02/17
B	ADDED WINDOW OPTION	6688.01	12/04/13
A	RELEASED FOR PRODUCTION	6321.01	02/03/12

MATERIAL:	SCALE: None
FINISH:	DRAWN BY: G. Wedekind
	CHECKED BY: G. Wedekind
	DATE: 02/03/12
	ECO: 6321.01

RAYNOR

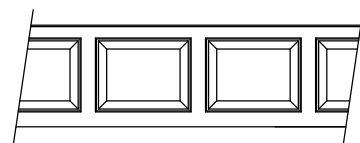
1101 EAST RIVER ROAD
DIXON, IL. 61021

TITLE:	SPEC, WINDLOAD BUILDMARK / TRADEMARK 9' - 0" WIDE		
NO.	P-3322	SHEET	REV
		1 OF 3	C

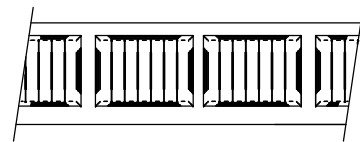


3 CENTER STILES
8' AND 9' WIDE

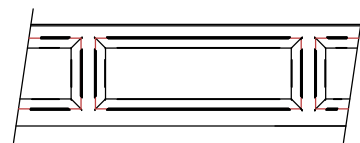
CENTER STILE LAYOUT
INTERMEDIATE SECTION SHOWN
INTERIOR VIEW



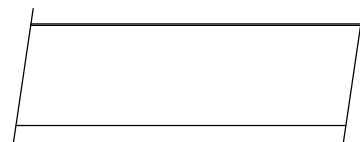
COLONIAL
PANEL



CARRIAGE HOUSE
PANEL

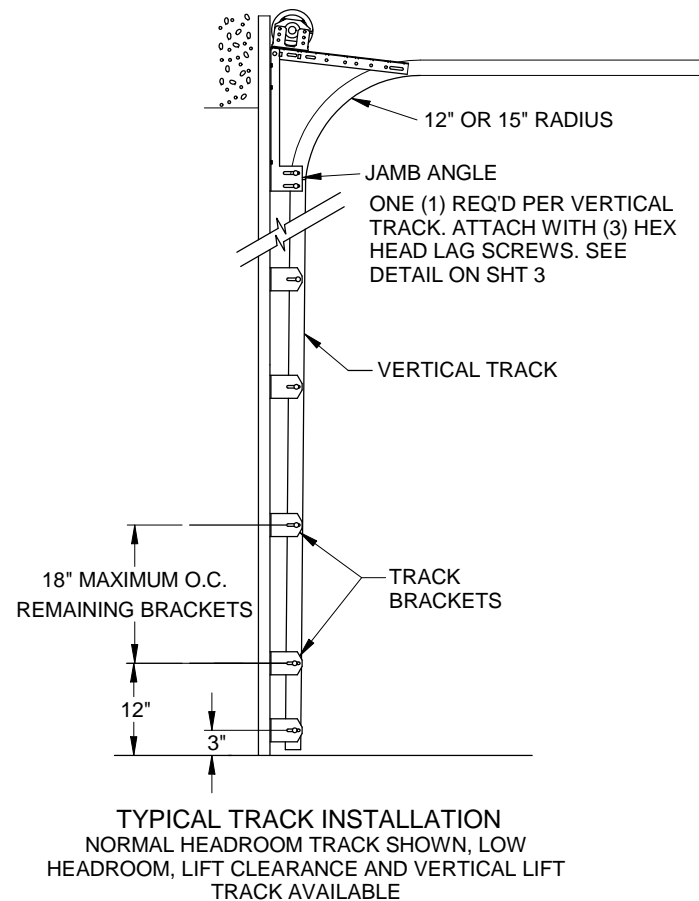


RANCH
PANEL

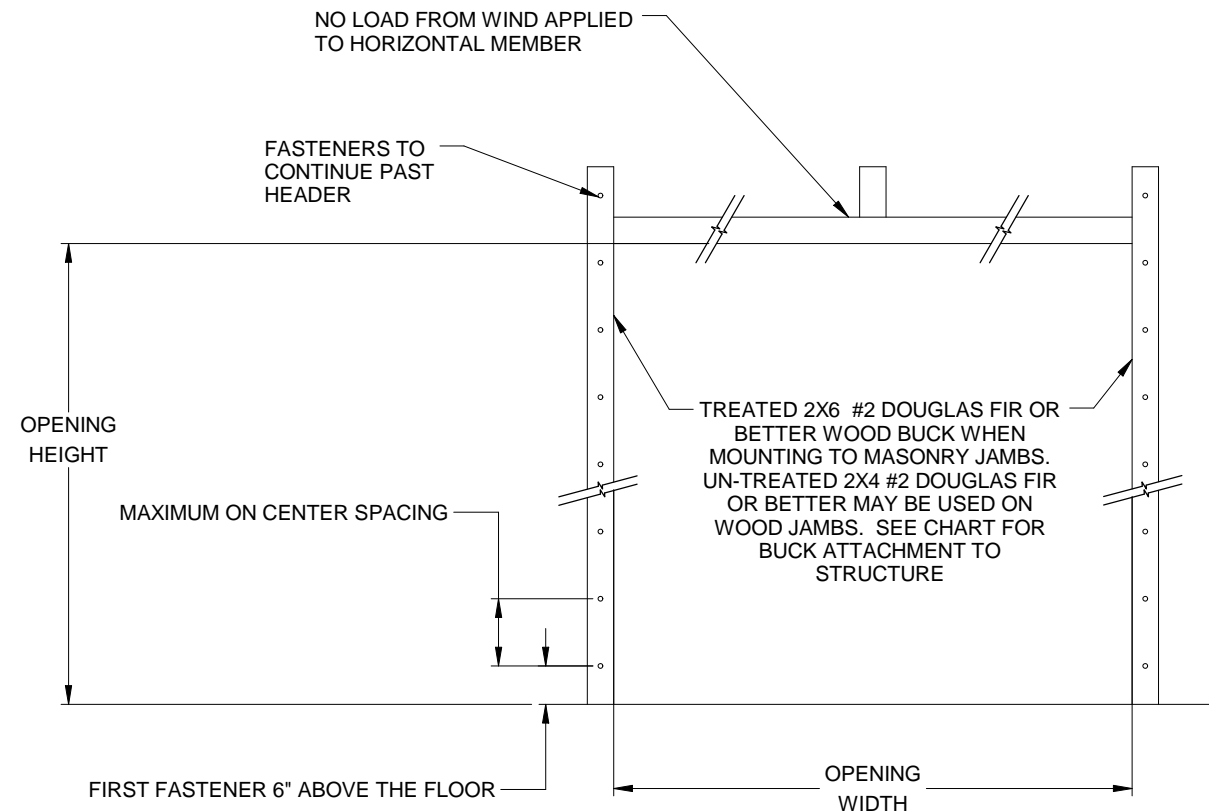


FLUSH
PANEL

PANEL OPTIONS
EXTERIOR VIEW



TYPICAL TRACK INSTALLATION
NORMAL HEADROOM TRACK SHOWN, LOW
HEADROOM, LIFT CLEARANCE AND VERTICAL LIFT
TRACK AVAILABLE



JAMB ATTACHMENT NOTES

1. MAXIMUM POSITIVE LOAD PER JAMB = (9'-0" X 41.6 PSF) / 2 = 188 LBS PER FOOT
2. MAXIMUM NEGATIVE LOAD PER JAMB = (9'-0" X -47.1 PSF) / 2 = 212 LBS PER FOOT.
3. DESIGN OF THE SUPPORTING STRUCTURE SHALL BE THE SOLE RESPONSIBILITY OF THE BUILDING DESIGNER AND SHALL BE DESIGNED FOR THE JAMB LOADS LISTED IN NOTES 1 AND 2.
4. ALTERNATE JAMB ATTACHMENTS MAY BE USED IF APPROVED BY A REGISTERED PROFESSIONAL ENGINEER.
5. DASMA TECHNICAL DATA SHEET TDS-161 MAY BE USED FOR ALTERNATE JAMB ATTACHMENTS.
6. 3/8" DIAMETER LAG SCREWS REQUIRE 1/16" DIAMETER PILOT HOLE AND 1-1/2" MINIMUM EDGE DISTANCE.

2X6 ATTACHMENT TO STRUCTURE						
STRUCTURE TYPE	FASTENER TYPE	MINIMUM EMBEDMENT	MINIMUM EDGE DISTANCE	MINIMUM ON CENTER SPACING	DIMENSION A (MAXIMUM ON CENTER SPACING)	ALLOWABLE TENSION LOAD
2500 PSI MIN. CONCRETE	1/4" TAPCON+ (PLUS) WITH 1-1/8" OD WASHER	2"	2.5	6"	24"	691
SOUTHERN PINE	3/8" X 3" LAG WITH 1-1/8" OD WASHER	1.50"	1.50"	1.50"	24"	655
SPRUCE PINE FIR	3/8" X 3" LAG WITH 1-1/8" OD WASHER	1.50"	1.50"	1.50"	24"	482

Scott A. Brown P.E.
F.P.E #65940
698 Timber Creek Road
Dixon Illinois 61021

TOLERANCES:
DIMENSIONS ARE IN INCHES
TWO PLACE (.XX) ± .03
THREE PLACE (.XXX) ± .015
ANGLES ± 1°
UNLESS OTHERWISE SPECIFIED

MATERIAL:

SCALE: None

DRAWN BY: G. Wedekind

CHECKED BY: G. Wedekind

FINISH:

DATE: 02/03/12

ECO: 6321.01



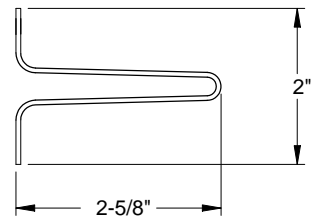
1101 EAST RIVER ROAD
DIXON, IL. 61021

TITLE:
SPEC, WINDLOAD
BUILDMARK / TRADEMARK
9' - 0" WIDE

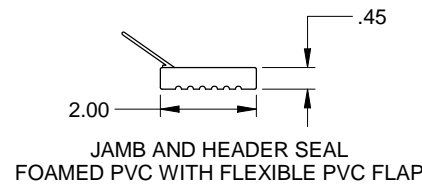
NO. P-3322

SHEET
2 OF 3

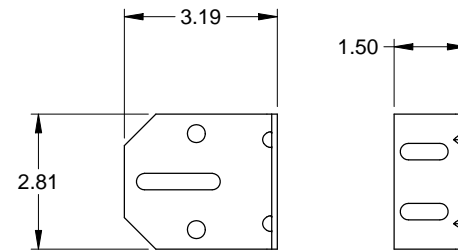
REV
C



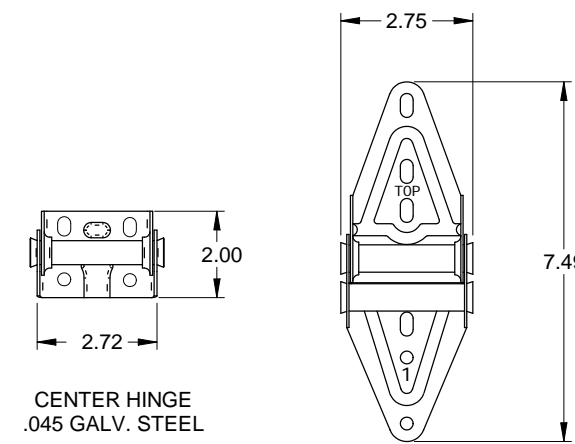
STEEL U-BAR DETAIL
18 GA. (.049" MIN) GALVANIZED
HIGH TENSILE STEEL
80 KSI MINIMUM YIELD



JAMB AND HEADER SEAL
FOAMED PVC WITH FLEXIBLE PVC FLAP

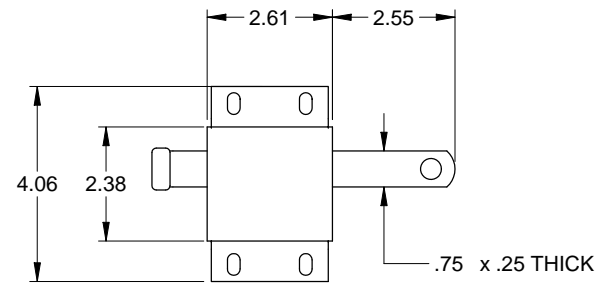


3" TRACK BRACKET
.116 GALV. STEEL

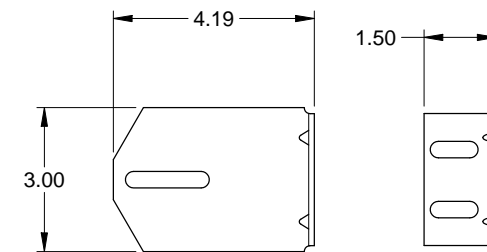


CENTER HINGE
.045 GALV. STEEL

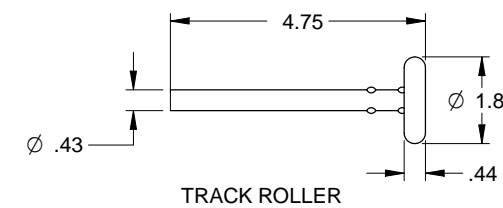
EDGE HINGE
.086 GALV. STEEL



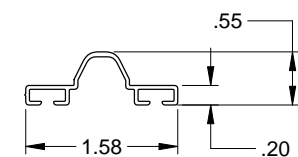
SLIDE LOCK CASE
.086 GALV. STEEL



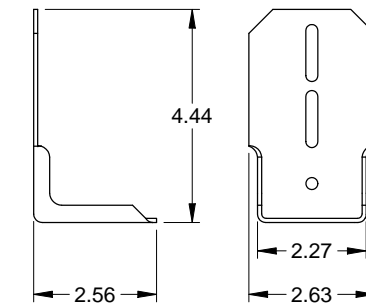
4" TRACK BRACKET
.116 GALV. STEEL



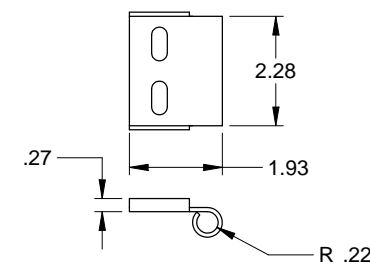
TRACK ROLLER



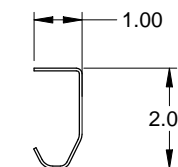
ASTRAGAL RETAINER
.039 ALUMINUM



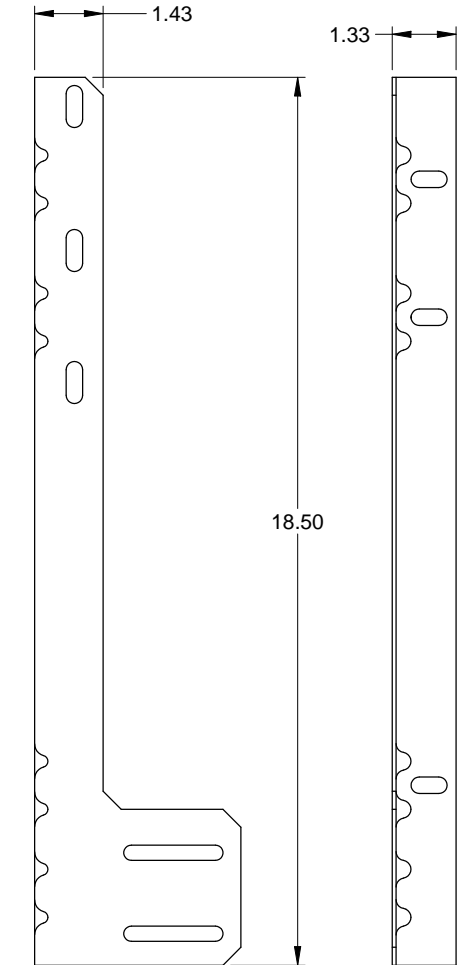
TOP FIXTURE
.086 GALV. STEEL



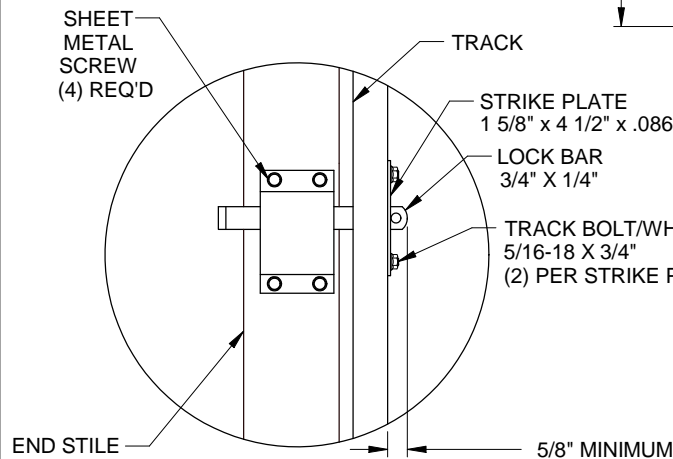
ROLLER CARRIER
.116 GALV. STEEL
ATTACHED TO TOP FIXTURE WITH
(2) TRACK BOLTS AND WHIZ NUTS



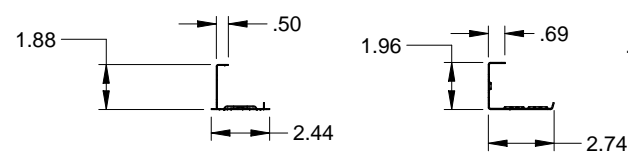
TRACK
.086 GALV. STEEL



JAMB ANGLE
.078 GALV. STEEL

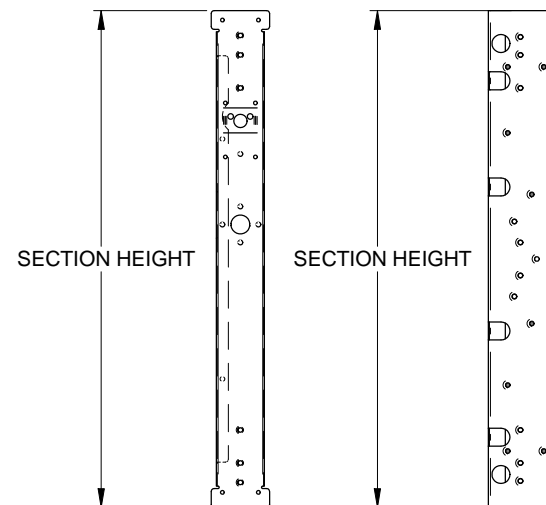


OPTIONAL INTERIOR LOCK DETAIL



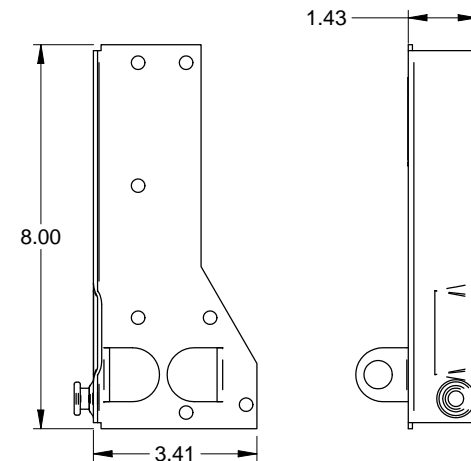
SECTION HEIGHT

SECTION HEIGHT

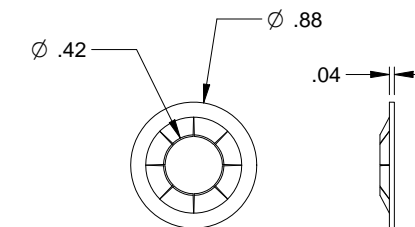


CENTER STILE
.034 GALV. STEEL

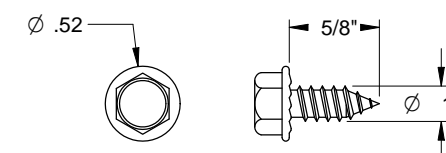
END STILE
.043 GALV. STEEL



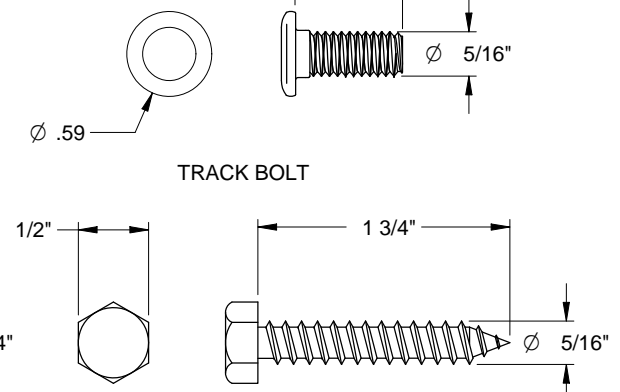
CORNER BRACKET
.086 GALV. STEEL



RETAINING NUT



SHEET METAL SCREW



TRACK BOLT

HEX HEAD LAG SCREW