

OUTSWING CASEMENT WINDOW (IMPACT)

NOTES:

- THIS INSTALLATION HAS BEEN EVALUATED FOR USE IN LOCATIONS ADHERING TO THE FLORIDA BUILDING CODE OUTSIDE THE HVHZ, AND WHERE PRESSURE REQUIREMENTS AS DETERMINED BY ASCE 7 MINIMUM DESIGN LOADS FOR BUILDINGS AND OTHER STRUCTURES DO NOT EXCEED THE DESIGN PRESSURE RATINGS HEREIN.
- THIS PRODUCT IS MISSILE LEVEL D, WIND ZONE 3 IMPACT RESISTANT. WHEN USED IN WIND ZONE 3 OR BELOW AREAS, THIS PRODUCT DOES NOT REQUIRE THE USE OF APPROVED IMPACT PROTECTIVE DEVICES (SHUTTERS).
- ANCHOR TYPE, SIZE, SPACING, EMBEDMENT, AND EDGE DISTANCE SHALL BE AS SPECIFIED IN THESE DRAWINGS. USE APPROPRIATE ANCHORAGE FROM TABLE I ACCORDING TO SUBSTRATE TYPE. A MINIMUM CENTER-TO-CENTER SPACING OF 3" SHALL BE MAINTAINED BETWEEN ALL INSTALLATION FASTENERS IN ANY DIRECTION.
- ANCHOR EMBEDMENT TO SUBSTRATE SHALL BE BEYOND WALL DRESSING OR STUCCO. FOR MASONRY OPENINGS WITH WOOD BUCKS LESS THAN 1-1/2" THICK, EMBEDMENT SHALL BE BEYOND WOOD BUCKS, IF USED, AND INTO MASONRY SUBSTRATE. WOOD BUCKS WITH MASONRY ARE OPTIONAL.
- WOOD, METAL, OR MASONRY OPENINGS, BUCKS, AND BUCK FASTENERS, BY OTHERS, SHALL BE PROPERLY DESIGNED AND INSTALLED BY OTHERS TO TRANSFER SUPERIMPOSED LOADS TO THE STRUCTURE. ADEQUACY OF THE STRUCTURE TO RECEIVED THESE LOADS SHALL BE VERIFIED BY THE CONTRACTOR OR AUTHORITY HAVING JURISDICTION (AHJ).
- IT IS THE RESPONSIBILITY OF THE ARCHITECT OR ENGINEER OF RECORD OR AS APPROVED BY THE AHJ TO SELECT PLY GEM PRODUCTS TO MEET ALL APPLICABLE LOCAL LAWS, BUILDING CODES, ORDINANCES, OR OTHER SAFETY REQUIREMENTS FOR EACH INSTALLATION.
- SHIMS ARE REQUIRED WHERE GAPS OF GREATER THAN 1/16" EXIST BETWEEN OPENING AND FRAME. MAX. SHIM STACK IS 1/4". SHIMS SHALL BE LOAD-BEARING AND CAPABLE OF TRANSFERRING LOADS TO THE SUBSTRATE.
- SEALING AND FLASHING STRATEGIES FOR OVERALL WATER INFILTRATION RESISTANCE OF THE INSTALLED PRODUCT SHALL BE THE RESPONSIBILITY OF OTHERS USING ASTM E 2112 AND IS NOT ADDRESSED BY THIS DOCUMENT.
- INSTALLED GLAZING SHALL COMPLY WITH ASTM E 1300.
- ALL FASTENERS PENETRATING INTO PRESSURE TREATED WOOD SHALL BE CAPABLE OF PREVENTING CORROSION DUE TO REACTION WITH PRESSURE TREATMENT CHEMICALS. ANY DISSIMILAR MATERIALS THAT COME INTO CONTACT SHALL BE PROTECTED TO PREVENT REACTIONS IN ACCORDANCE WITH CODE REQUIREMENTS.
- A WIND LOAD DURATION FACTOR $C_d = 1.6$ WAS USED FOR THE ANALYSIS OF WOOD SCREWS ONLY.
- PRODUCTS SHALL BE CONSTRUCTED AS SPECIFIED IN TEST REPORTS NATIONAL CERTIFIED TESTING LABORATORIES I10-I5390-1.
- DESIGNATION "X" IS FOR OPERABLE PANEL AND "O" IS FOR FIXED PANEL.
- USE A BACKER ROD ON ALL JOINTS >3/4" DEEP AND/OR WIDER THAN 1/4". FINISHED CAULK JOINT SHOULD BE A MINIMUM OF 3/8" DEEP.

SIZE CHART				
OVERALL SIZE		PRODUCT RATING	MAX. DESIGN PRESSURE	MISSILE IMPACT RATING
WIDTH	HEIGHT			
35-1/2"	71-1/2"	LC-PG50	+50/-60 PSF	LARGE & SMALL MISSILE IMPACT

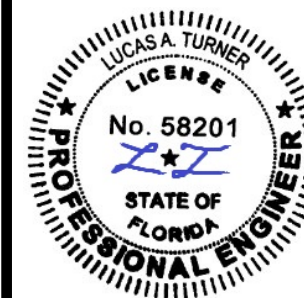
TABLE OF CONTENTS	
SHEET	SHEET DESCRIPTION
1	INSTALLATION & GENERAL NOTES
2	ELEVATION & ANCHOR LAYOUTS
3	OPERATING WINDOW & GLAZING DETAIL
4	OPERATING WINDOW DETAILS

TABLE I: INSTALLATION FASTENERS TABLE

ID	SUBSTRATE TYPE	ANCHOR TYPE	MIN. EMBED.	MIN. EDGE DISTANCE
FIN INSTALLATION				
A	2X MIN. PRUCE-PINE-FIR WOOD (G=0.42)	10D COMMON NAIL (0.131" MIN.) OR 0.131" MIN. ROOFING NAIL	2"	3/8"
B	2X MIN. SPRUCE-PINE-FIR WOOD (G=0.42)	#8 WOOD SCREW	1-1/2"	3/8"
C	16 GAUGE (0.060") STEEL 36 KSI MIN. YIELD OR 1/8" ALUM. 6063-T5 MIN.	#10-16 SELF-DRILLING SCREW (TEKS/DRIL-FLEX/KWIK-FLEX)	FULL, PLUS 3 THREADS MIN.	3/8"
FRAME INSTALLATION				
D	CONCRETE (2 KSI MIN.)	3/16" ITW TAPCON	1-1/2"	1-1/8"
E	HOLLOW OR GROUT-FILLED CMU (117 PCF MIN.)	3/16" ITW TAPCON	1"	2"
F	2X MIN. SOUTHERN PINE WOOD (G=0.55)	3/16" ITW TAPCON	1-3/8"	7/8"
G	2X MIN. SOUTHERN PINE WOOD (G=0.55)	#10 WOOD SCREW	1-3/8"	7/8"
H	16 GAUGE (0.060") STEEL 36 KSI MIN. YIELD OR 1/8" ALUM. 6063-T5 MIN.	#10-16 SELF-DRILLING SCREW (TEKS/DRIL-FLEX/KWIK-FLEX)	FULL, PLUS 3 THREADS MIN.	1/2"

NOTE: ALL SCREWS AND TAPCONS SHALL HAVE MOD. TRUSS, PAN, OR HEX WASHER HEAD, 0.42" MIN. HEAD OR WASHER DIAMETER FOR FIN ANCHORS, 0.355" MIN. HEAD OR WASHER DIAMETER FOR FRAME ANCHORS. ALL NAILS SHALL HAVE FULL ROUND HEAD (OR USE CAPS/WASHERS), 0.42" MIN. HEAD OR WASHER DIAMETER.

TITLE: 1500 VINYL COLLECTION/CLASSIC/5000 CASEMENT WINDOW INSTALLATION & GENERAL NOTES	DATE	02.17.12	DWN BY:	GRN	CHK BY:		SCALE:	NTS
	NO.		REVISION DESCRIPTION					
	B		CODE CHANGE UPDATE					
	C		UPDATED NOTES & ADDED TABLE I					
	D		7TH EDITION (2020) FBC					
E		8TH EDITION (2023) FBC						
	BY	SM	LMH	LMH	LMH			
	DATE	3.31.15	8.06.18	11.19.20	12.05.23			



12/05/2023
LUCAS A. TURNER, P.E.
FL PE # 58201
TURNER ENGINEERING & CONSULTING, INC.
(COA # 29779)
2428 OLD NATCHEZ TRACE TRAIL, CAMDEN, TN 38320
PH. 941-380-1574

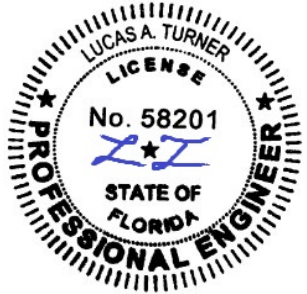
FL#: 15317

DWG #: PGW113

SHEET: 1 OF 4

TITLE: 1500 VINYL COLLECTION/CLASSIC/5000 CASEMENT WINDOW ELEVATION & ANCHOR LAYOUT		DATE	BY
NO.	REVISION DESCRIPTION	3.31.15	SM
B	CODE CHANGE UPDATE	8.06.18	LMH
C	UPDATED NOTES & ADDED TABLE I	11.19.20	LMH
D	7TH EDITION (2020) FBC	12.05.23	LMH
E	8TH EDITION (2023) FBC		

DATE:	DWN BY:	CHK BY:	SCALE:
02.17.12	GRN		NTS

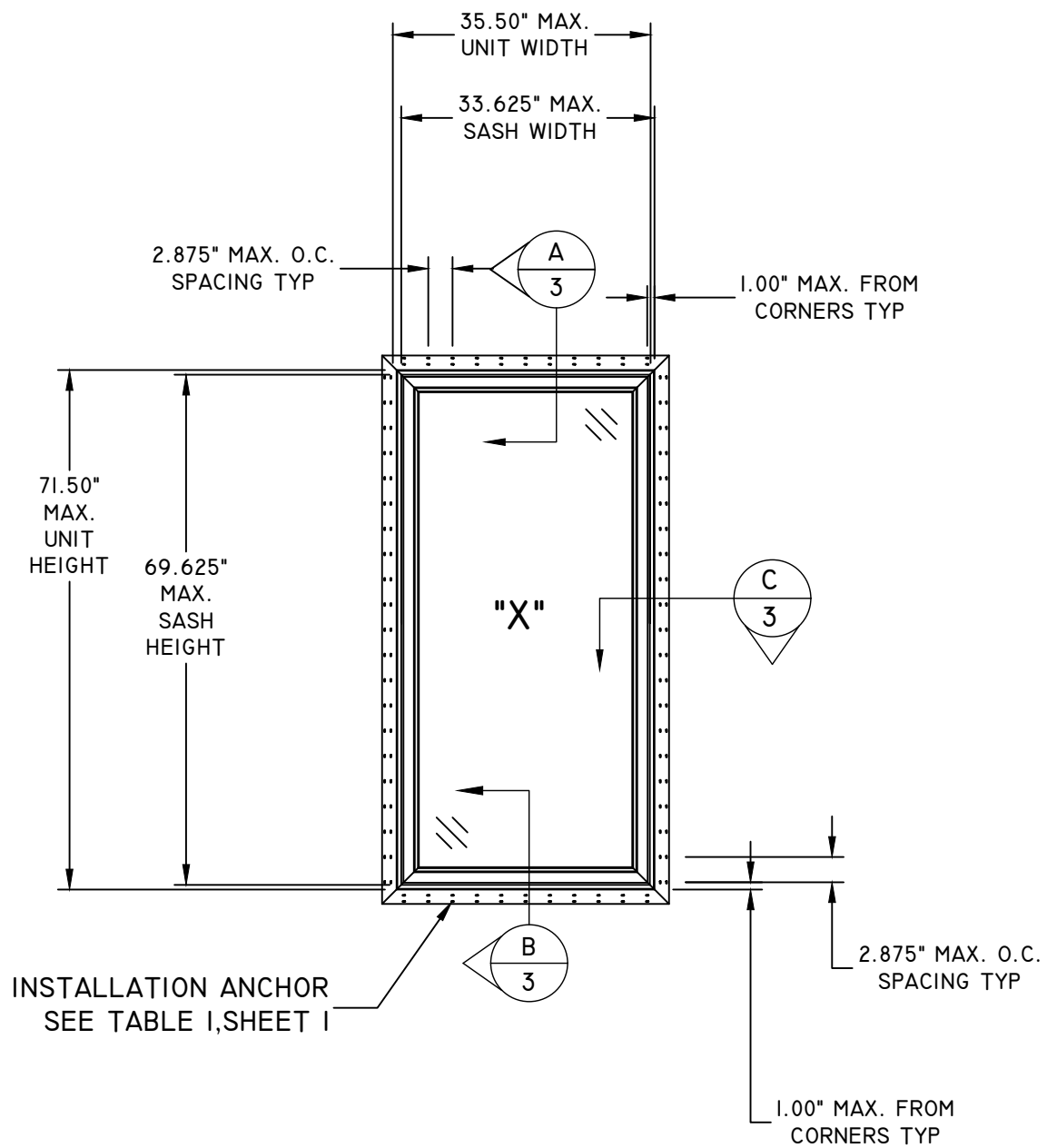


12/05/2023
LUCAS A. TURNER, P.E.
FL PE # 58201
TURNER ENGINEERING &
CONSULTING, INC.
(COA # 29779)
2428 OLD NATCHEZ TRACE
TRAIL, CAMDEN, TN 38320
PH. 941-380-1574

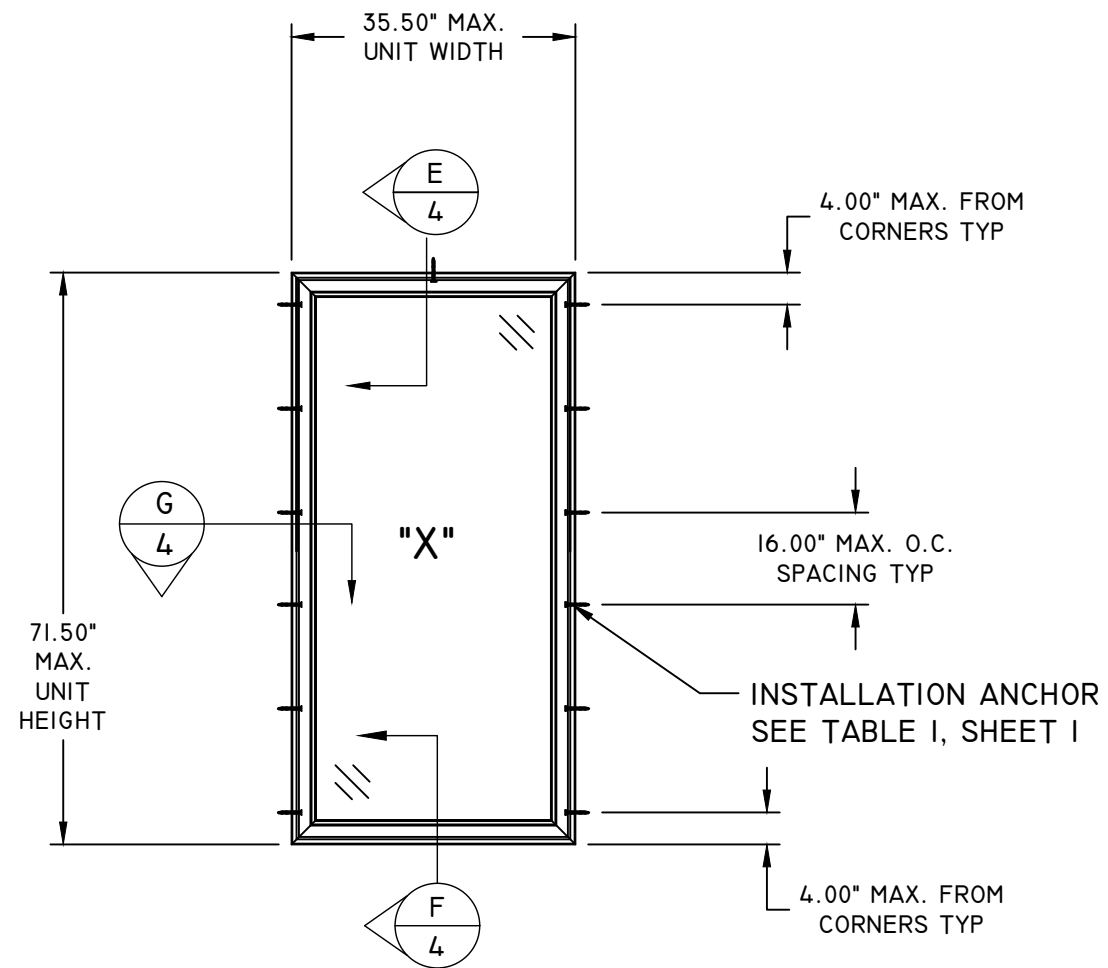
FL#: 15317

DWG #: PGW113

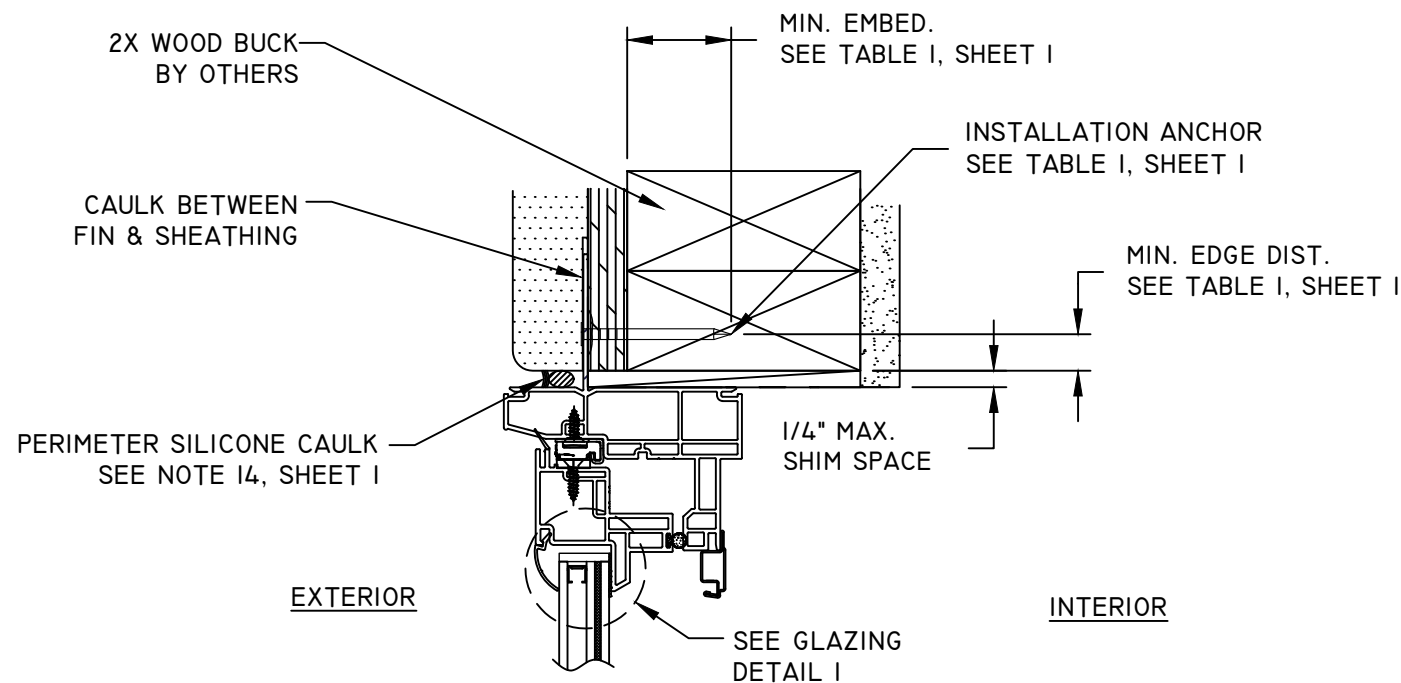
SHEET: 2 OF 4



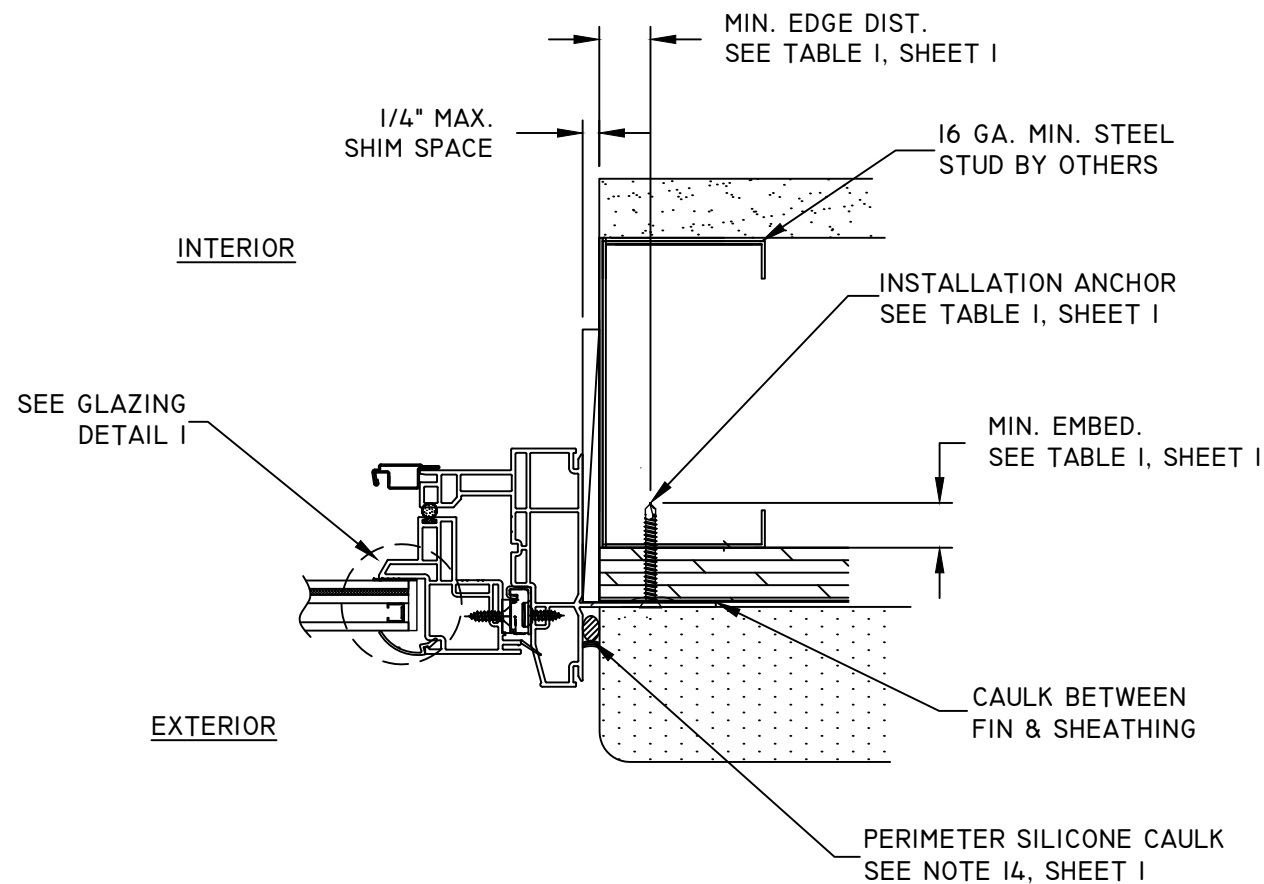
**ELEVATION WITH FASTENER SPACING
FIN INSTALLATION**



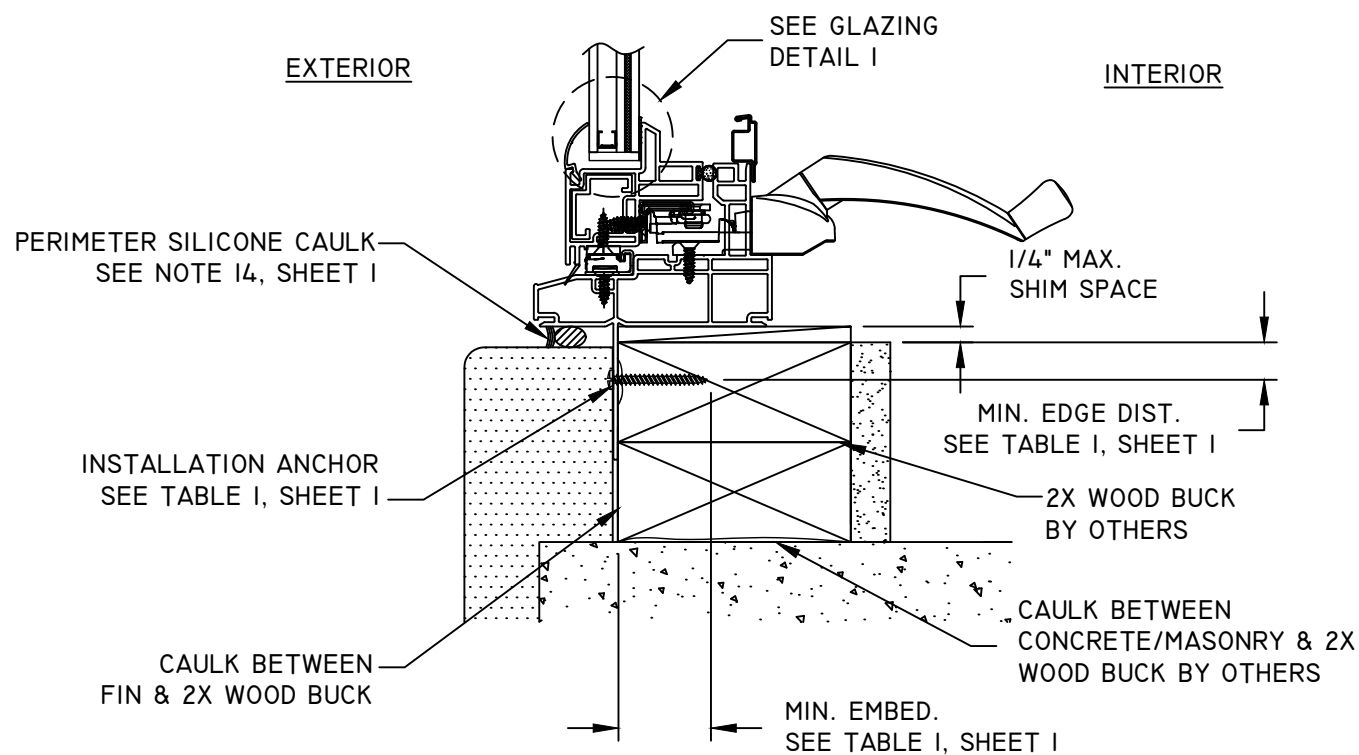
**ELEVATION WITH FASTENER SPACING
FRAME INSTALLATION**



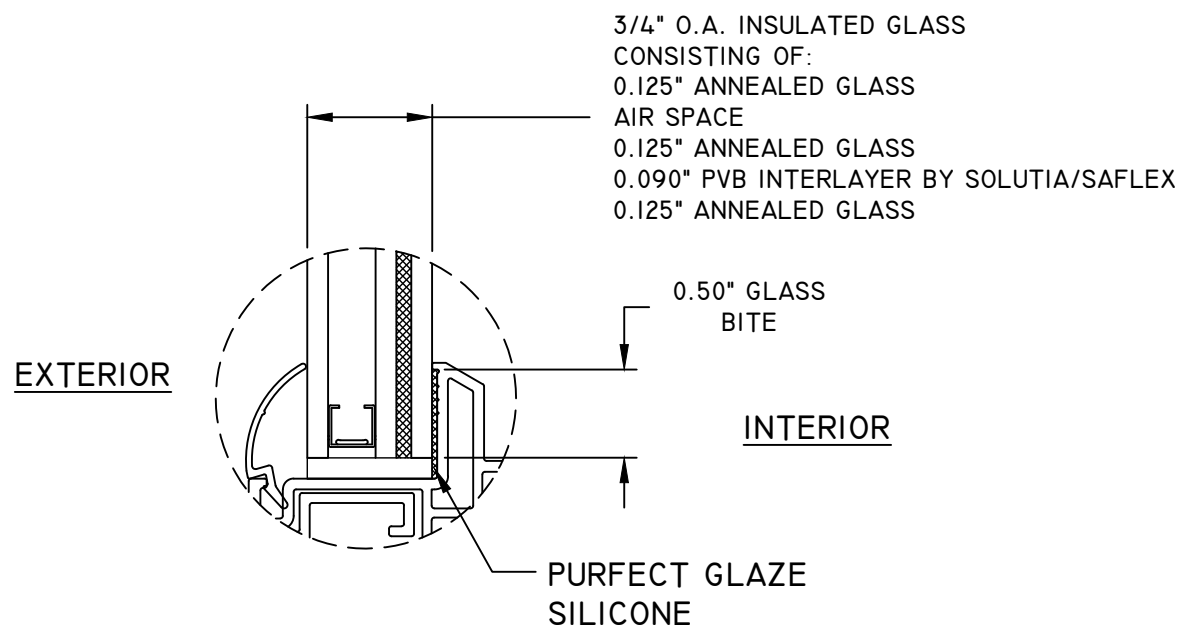
A
3 **OPERATING SECTION**
2X WOOD FRAME - HEAD
FIN INSTALLATION



C
3 **OPERATING SECTION**
JAMB - STEEL STUD
FIN INSTALLATION

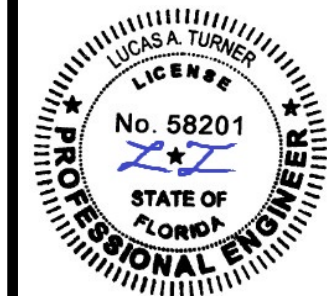


B
3 **OPERATING SECTION**
2X WOOD BUCK - SILL
FIN INSTALLATION



GLAZING DETAIL 1

TITLE: 1500 VINYL COLLECTION/CLASSIC/5000 CASEMENT WINDOW OPERATING WINDOW & GLAZING DETAILS	NO.	REVISION DESCRIPTION	BY	DATE
	B	CODE CHANGE UPDATE	SM	3.31.15
	C	UPDATED NOTES & ADDED TABLE I	LMH	8.06.18
	D	7TH EDITION (2020) FBC	LMH	11.19.20
	E	8TH EDITION (2023) FBC	LMH	12.05.23
DATE: 02.17.12	DWN BY: GRN	CHK BY:	SCALE: NTS	

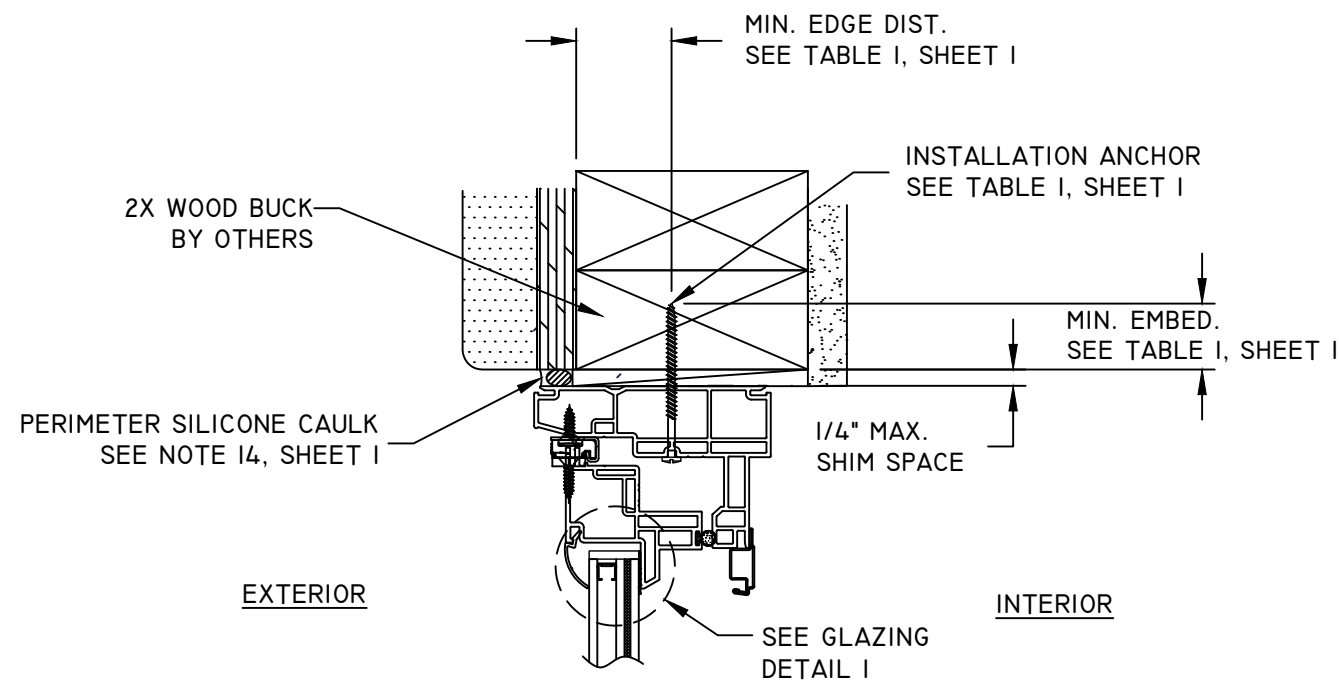


12/05/2023
LUCAS A. TURNER, P.E.
FL PE # 58201
TURNER ENGINEERING &
CONSULTING, INC.
(COA # 29779)
2428 OLD NATCHEZ TRACE
TRAIL, CAMDEN, TN 38320
PH. 941-380-1574

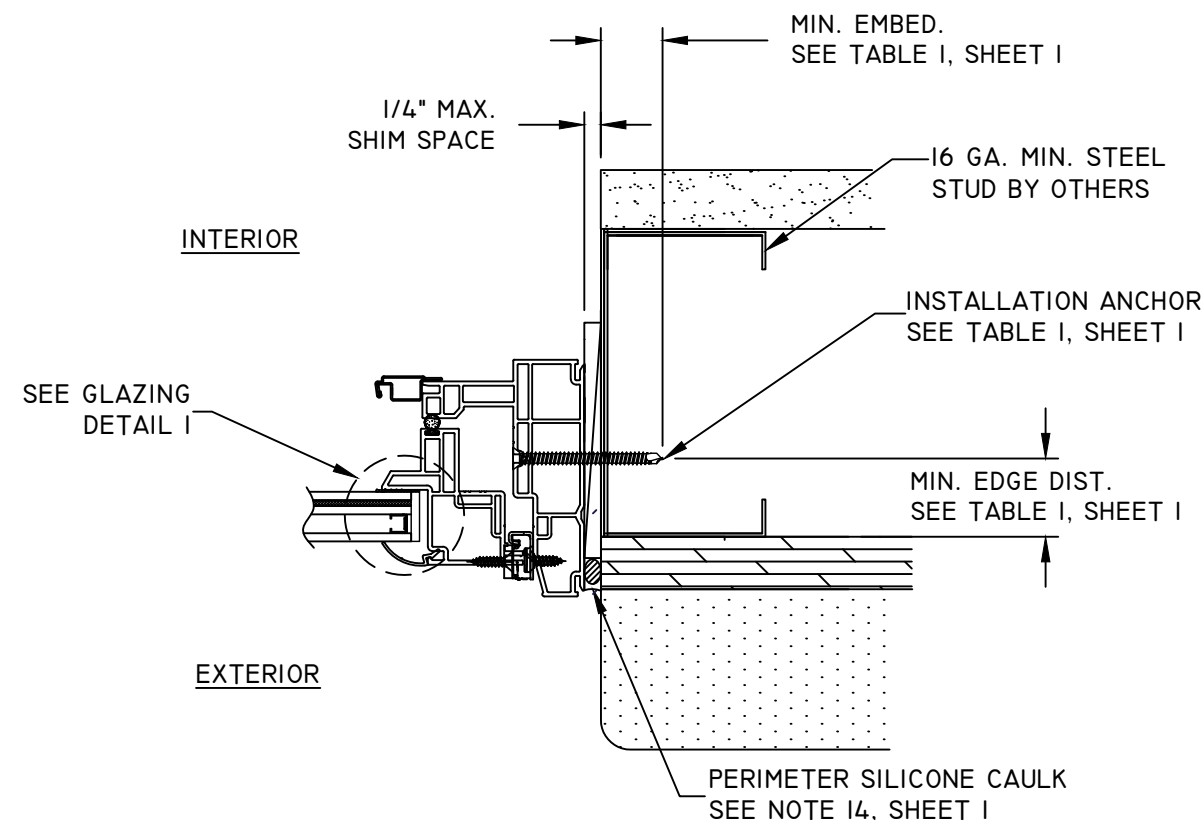
FL#: **15317**

DWG #: **PGW113**

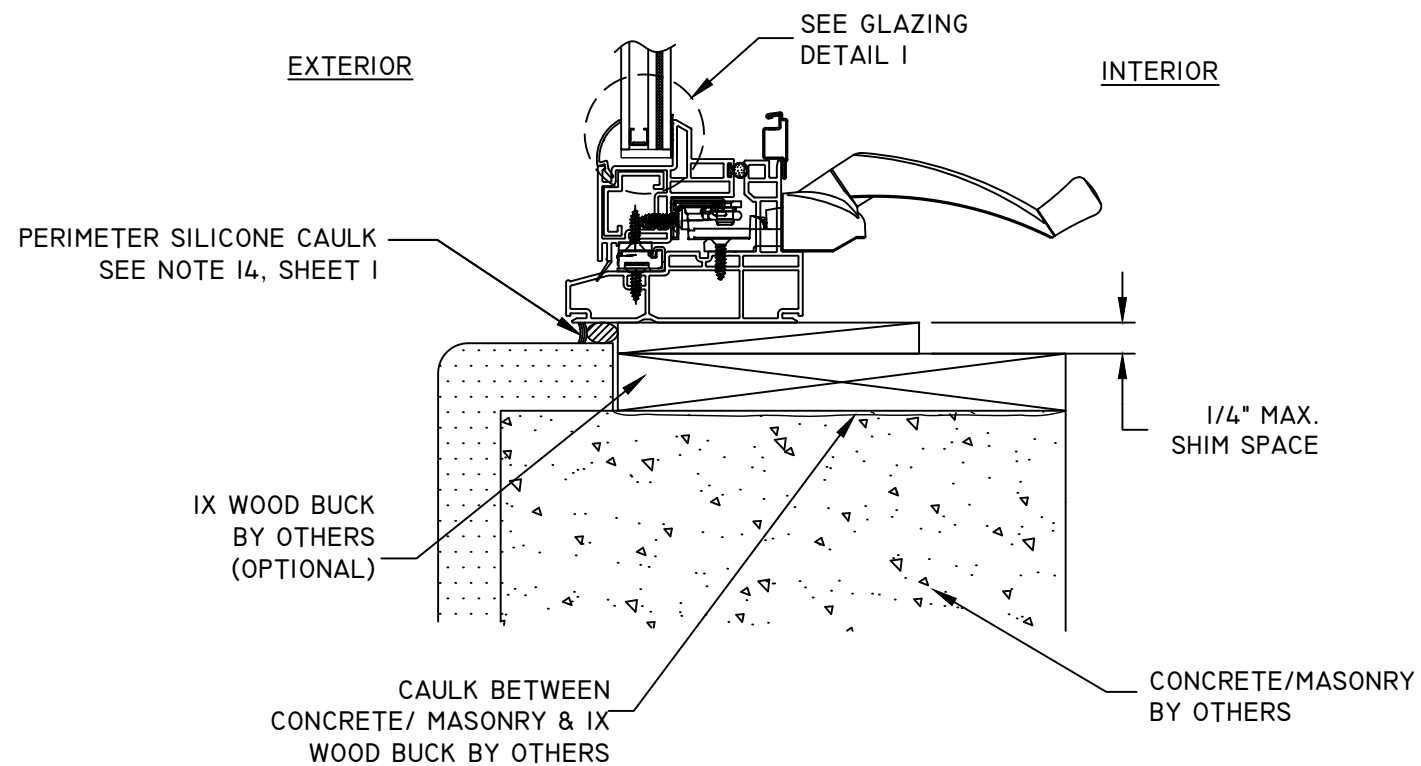
SHEET: **3 OF 4**



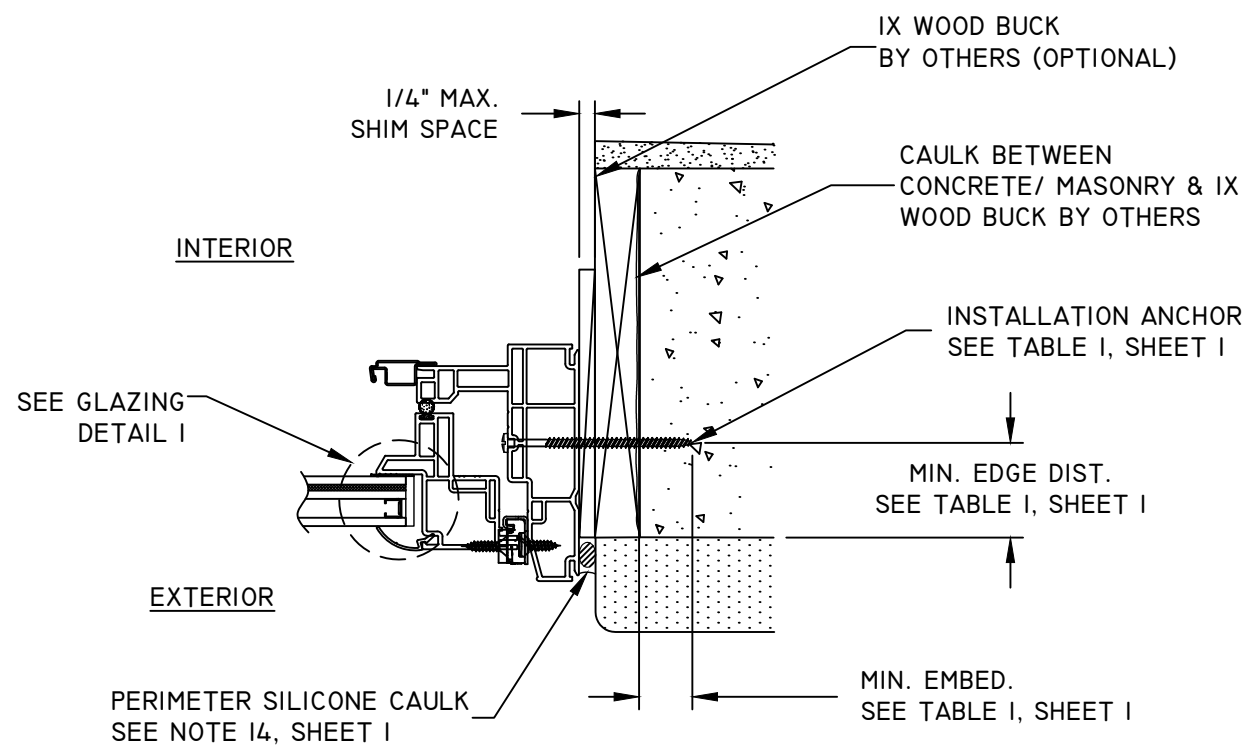
D
4 **OPERATING SECTION**
2X WOOD FRAME - HEAD & JAMBS
FRAME INSTALLATION



F
4 **OPERATING SECTION**
JAMB - STEEL STUD
FRAME INSTALLATION

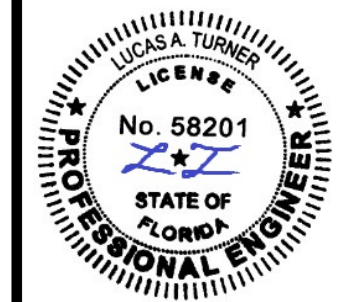


E
4 **OPERATING SECTION**
1X WOOD BUCK W/MASONRY - SILL
FRAME INSTALLATION



G
4 **OPERATING SECTION**
JAMB - 1X BUCK W/MASONRY
FRAME INSTALLATION

TITLE: 1500 VINYL COLLECTION/CLASSIC/5000 CASEMENT WINDOW OPERATING WINDOW DETAILS	NO.	REVISION DESCRIPTION	BY	DATE
	B	CODE CHANGE UPDATE	SM	3.31.15
	C	UPDATED NOTES & ADDED TABLE I	LMH	8.06.18
	D	7TH EDITION (2020) FBC	LMH	11.19.20
	E	8TH EDITION (2023) FBC	LMH	12.05.23
DATE: 02.17.12	DWN BY: GRN	CHK BY:	SCALE: NTS	



12/05/2023
LUCAS A. TURNER, P.E.
FL PE # 58201
TURNER ENGINEERING &
CONSULTING, INC.
(COA # 29779)
2428 OLD NATCHEZ TRACE
TRAIL, CAMDEN, TN 38320
PH. 941-380-1574

FL#: 15317

DWG #: PGW113

SHEET: 4 OF 4