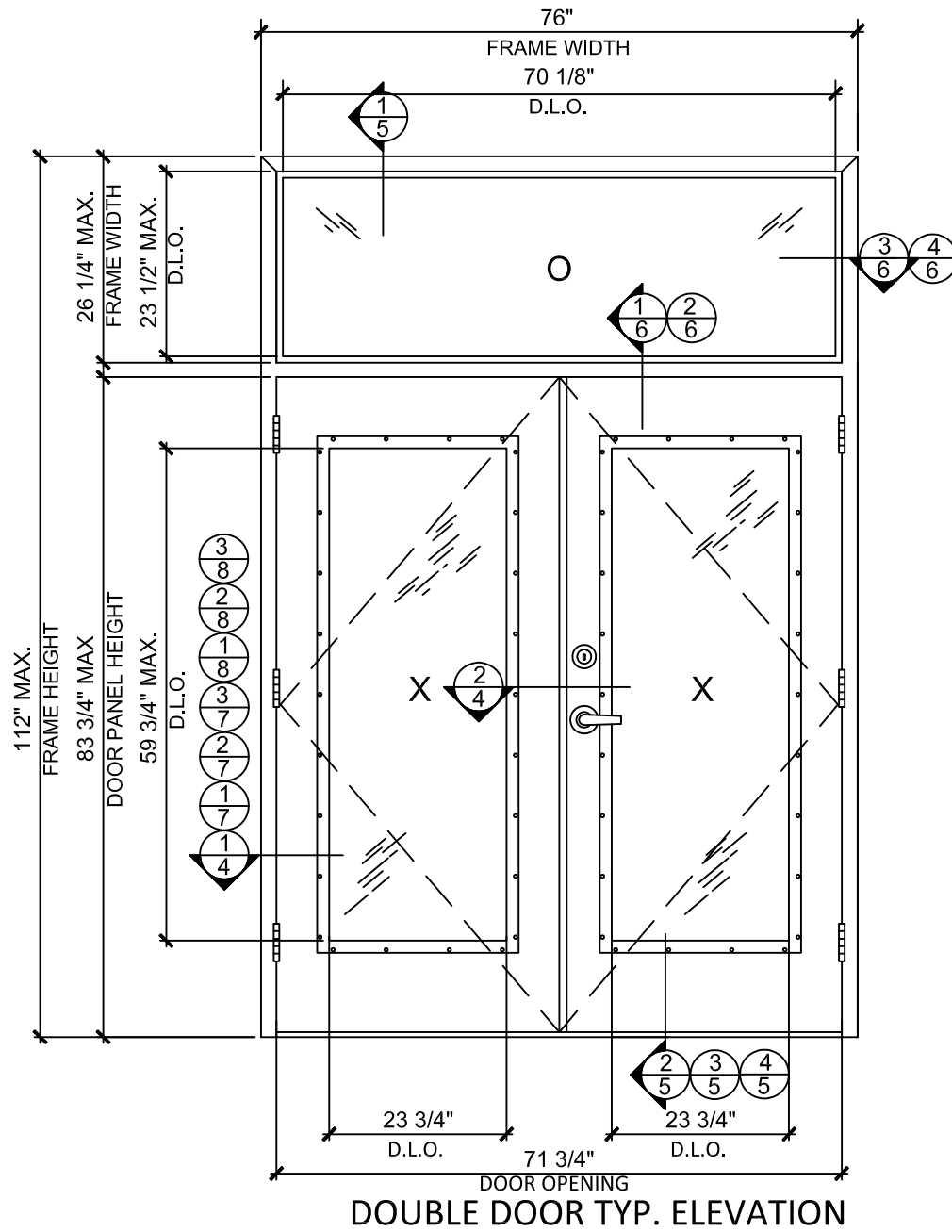


MESKER MBM, LLC.

"N" SERIES COMMERCIAL OUTSWING STEEL DOOR (HVHZ) (IMPACT)



MESKER MBM, LLC
3440 Standwood Blvd.
Huntsville, AL 35811
PH: (256) 851-6670



DOUBLE DOOR TYP. ELEVATION

DOOR PANEL: MIN. 18 GA. (0.042" THK.) STEEL MIN. $F_y = 42$ KSI MIN.
DOOR FRAME: MIN. 14 GA. (0.067" THK.) STEEL MIN. $F_y = 42$ KSI MIN.

OVERALL FRAME SIZE		DOOR D.L.O		TRANSOM D.L.O		DESIGN PRESSURE (PSF)	
WIDTH	HEIGHT	WIDTH	HEIGHT	WIDTH	HEIGHT	POSITIVE	NEGATIVE
76"	112"	23.75"	59.75"	70.125"	23.50"	+65.0	-65.0

SEE SHEET 12 FOR ADDITIONAL DESIGN PRESSURE REQUIREMENTS DUE TO HARDWARE COMPONENT SELECTION

GENERAL NOTES:

- THIS PRODUCT HAS BEEN DESIGNED AND EVALUATED TO COMPLY WITH THE REQUIREMENTS OF THE CURRENT FLORIDA BUILDING CODE: ASTM E1886-13a, ASTM E1996-17, ASTM E330-14, TAS 201-94, TAS 202-94, TAS 203-94, INCLUDING HIGH VELOCITY HURRICANE ZONE (HVHZ).
- DOORS RATED FOR LARGE MISSILE IMPACT AND DO NOT REQUIRE SHUTTERS.
- ANCHORS SHALL BE AS LISTED, SPACED AS SHOWN ON ELEVATIONS / DETAILS. ANCHOR EMBEDMENT TO BASE MATERIAL SHALL BE BEYOND WALL DRESSING OR STUCCO.
- ANCHORING OR LOADING CONDITIONS NOT SHOWN IN THESE DETAILS ARE NOT PART OF THIS APPROVAL.
- MATERIALS INCLUDING BUT NOT LIMITED TO STEEL/METAL SCREWS THAT COME INTO CONTACT WITH OTHER DISSIMILAR MATERIALS SHALL MEET THE REQUIREMENTS.
- METAL STRUCTURES NOT BY MESKER INC. MUST SUPPORT LOADS IMPOSED BY DOOR SYSTEM AND TRANSFER THEM TO THE BUILDING STRUCTURE.
- DOORS WHICH UTILIZE OUTSWING THRESHOLD QOSH BY DLP (ITEM #78) MEET THE WATER INFILTRATION REQUIREMENTS FOR THE "HVHZ". WATER TEST PRESSURE = 0.15 x POSITIVE DESIGN PRESSURE.
- DOOR DOES NOT MEET THE WATER INFILTRATION REQUIREMENTS FOR "HVHZ" AND SHALL BE INSTALLED ONLY IN NON-HABITABLE AREAS OR HABITABLE LOCATIONS PROTECTED BY AN OVERHANG OR CANOPY SUCH THAT THE ANGLE BETWEEN THE EDGE OF CANOPY OR OVERHANG TO SILL IS LESS THAN 45 DEGREES.
- OTHER DOOR PANEL CONFIGURATIONS AVAILABLE PER REQUEST TO MANUFACTURE.

NOTE:
EGRESS REQUIREMENTS TO BE REVIEWED BY BUILDING OFFICIAL.

TABLE OF CONTENTS	
SHEET	SHEET DESCRIPTION
1	TYPICAL ELEVATIONS, DESIGN PRESSURES, & GENERAL NOTES
2	TYPICAL ELEVATIONS & DESIGN PRESSURES
3	DOOR PANEL DETAILS
4	VERTICAL & HORIZONTAL CROSS SECTIONS
5	VERTICAL CROSS SECTIONS & GLAZING DETAILS
6	VERTICAL & HORIZONTAL CROSS SECTION
7	HORIZONTAL CROSS SECTIONS
8	HORIZONTAL CROSS SECTIONS
9	ANCHORING DETAILS
10	ANCHORING DETAILS
11	ANCHORING DETAILS
12	HARDWARE / LOCK OPTIONS
13	COMPONENTS
14	BILL OF MATERIALS & COMPONENTS

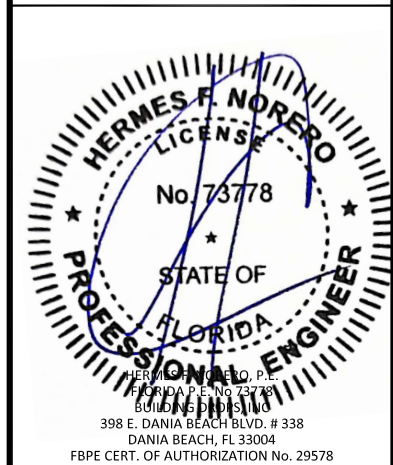
TITLE: "N" SERIES COMMERCIAL OUTSWING STEEL DOOR (HVHZ) (IMPACT)

INSTALLATION & GENERAL NOTES

PREPARED BY: BUILDING DROPS, INC.
398 E. DANIA BEACH BLVD., STE. 338
DANIA BEACH, FL 33004
PH: (954) 399-8478
FAX: (954) 744-4738
WEB: www.buildingdrops.com

REMARKS	BY	DATE
2020 FBC UPDATE	NUS	07/23/20
2023 NAME CHANGE	MG	03/06/23

THE INSTALLATION DETAILS DESCRIBED HEREIN ARE GENERIC AND MAY NOT REFLECT ACTUAL CONDITIONS FOR A SPECIFIC SITE. IF SITE CONDITIONS CAUSE INSTALLATION TO DEVIATE FROM THE REQUIREMENTS DETAILED HEREIN, A LICENSED ENGINEER OR ARCHITECT SHALL PREPARE SITE SPECIFIC DOCUMENTS FOR USE WITH THIS DOCUMENT.



FL #:
FL15539

DATE: **06.03.16**

DWG. BY: **LS** CHK. BY: **HFN**

SCALE: **NTS**

DWG. #: **MDI003**

SHEET:
1
OF 14

4/18/2023 2:46 PM
s:\projects\mesker mbm, llc\fb-23-0112 - fbc submittal - commercial steel doors revisions\dwg\115539\mdi003.dwg



MESKER MBM, LLC
3440 Standwood Blvd.
Huntsville, AL 35811
PH: (256) 851-6670

TITLE: "N" SERIES COMMERCIAL OUTSWING STEEL DOOR (HVHZ) (IMPACT)

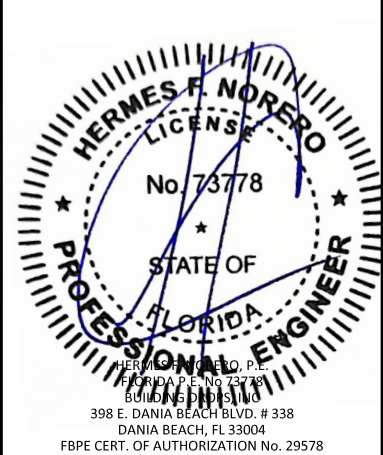
EVALUATION & DESIGN PRESSURE

PREPARED BY: BUILDING DROPS, INC.
398 E. DANIA BEACH BLVD., STE. 338
DANIA BEACH, FL 33004
PH: (954) 399-8478
FAX: (954) 744-4738
WEB: www.buildingdrops.com



REMARKS	BY	DATE
2020 FBC UPDATE	NUS	07/23/20
2023 NAME CHANGE	MG	03/06/23

THE INSTALLATION DETAILS DESCRIBED HEREIN ARE GENERIC AND MAY NOT REFLECT ACTUAL CONDITIONS FOR A SPECIFIC SITE. IF SITE CONDITIONS CAUSE INSTALLATION TO DEVIATE FROM THE REQUIREMENTS DETAILED HEREIN, A LICENSED ENGINEER OR ARCHITECT SHALL PREPARE SITE SPECIFIC DOCUMENTS FOR USE WITH THIS DOCUMENT.



FL #:

FL15539

DATE: **06.03.16**

DWG. BY: **LS** CHK. BY: **HFN**

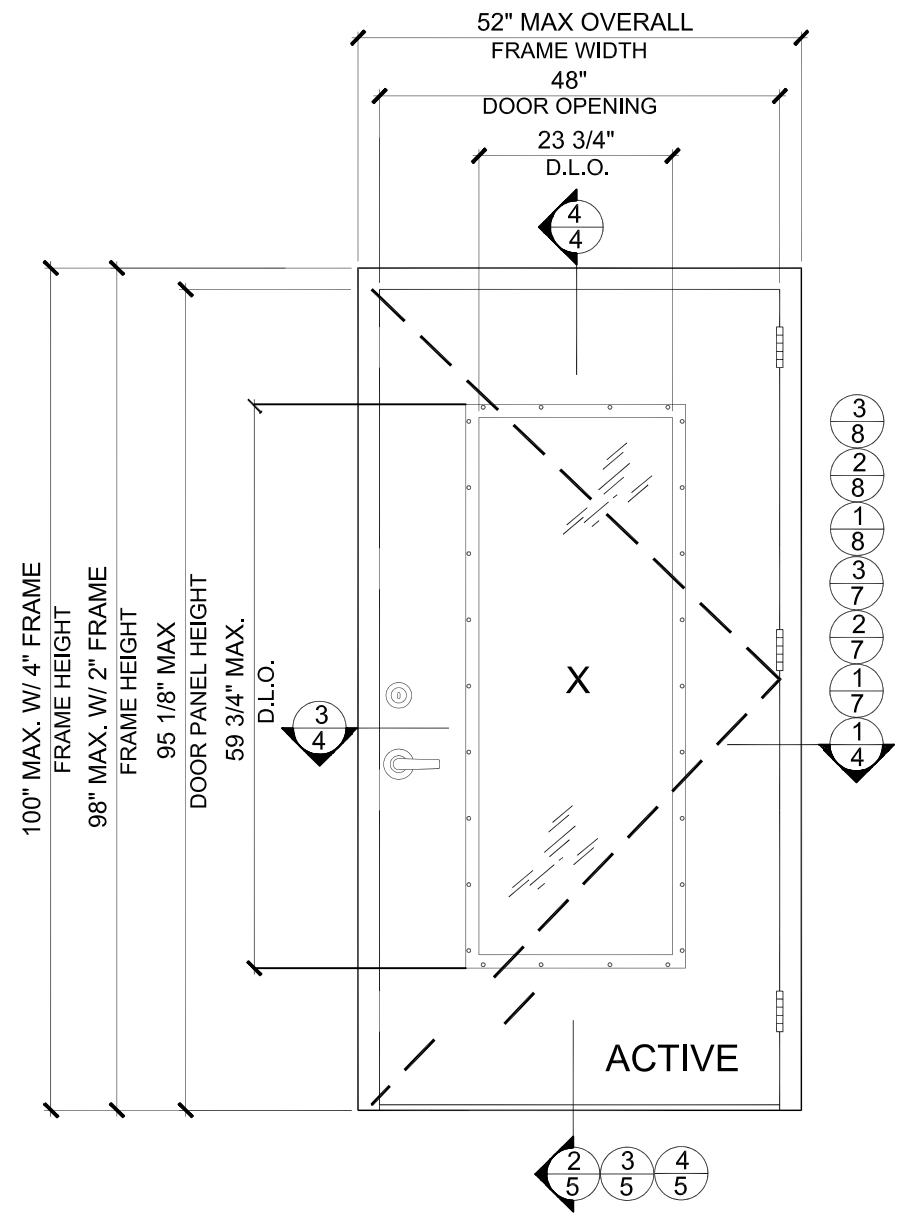
SCALE: **NTS**

DWG. #: **MDI003**

SHEET:

2

OF 14

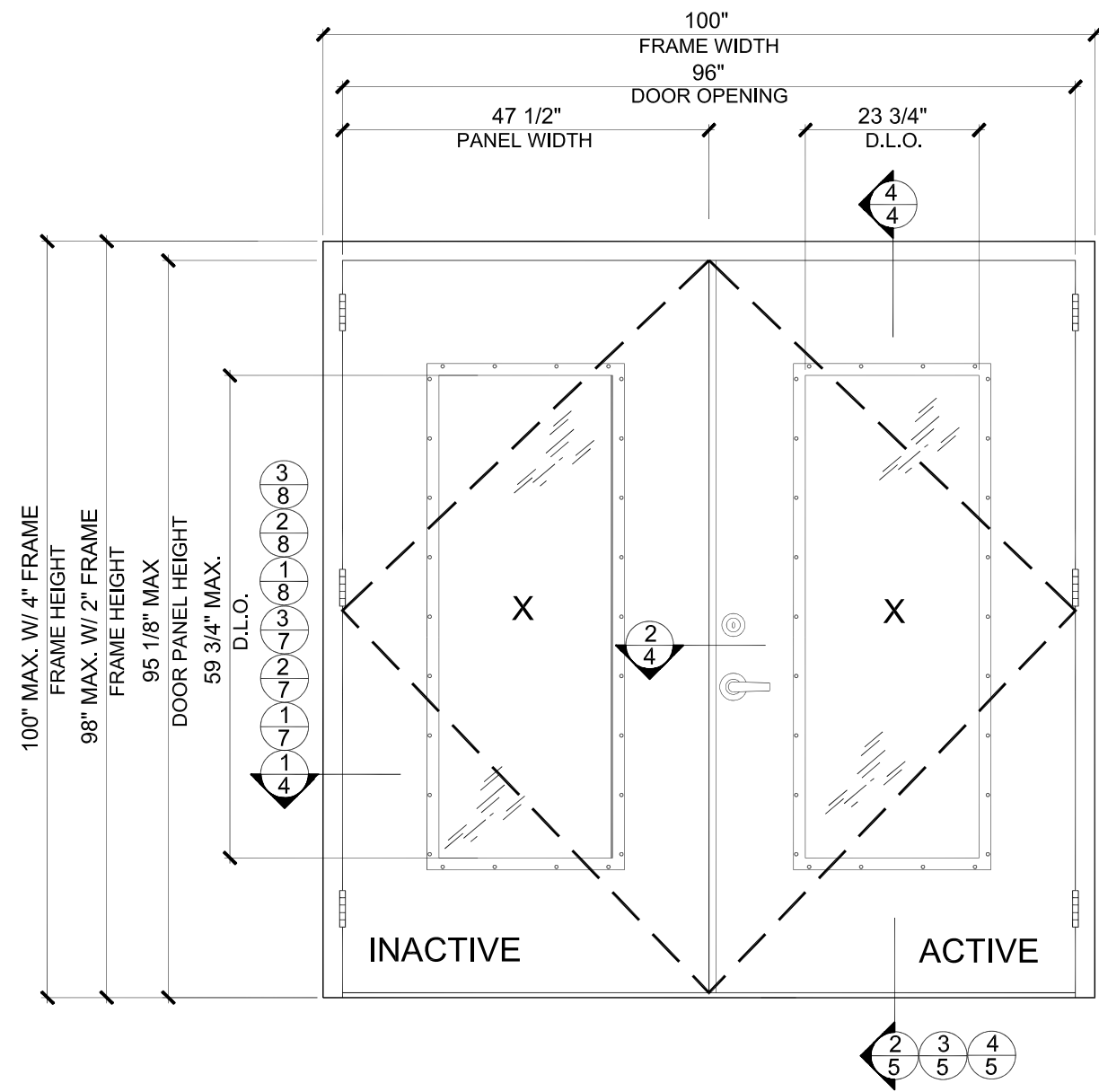


SINGLE DOOR TYP. ELEVATION

DOOR PANEL: MIN. 18 GA. (0.042" THK.) STEEL MIN. Fy = 42 KSI MIN.
DOOR FRAME: MIN. 16 GA. (0.053" THK.) STEEL MIN. Fy = 42 KSI MIN.

OVERALL FRAME SIZE		DOOR D.L.O		DESIGN PRESSURE (PSF)	
WIDTH	HEIGHT	WIDTH	HEIGHT	POSITIVE	NEGATIVE
52.00"	100"	23.75"	59.75"	+65.0	-65.0

SEE SHEET 12 FOR ADDITIONAL DESIGN PRESSURE REQUIREMENTS DUE TO HARDWARE COMPONENT SELECTION



DOUBLE DOOR TYP. ELEVATION

DOOR PANEL: MIN. 18 GA. (0.042" THK.) STEEL MIN. Fy = 42 KSI MIN.
DOOR FRAME: MIN. 16 GA. (0.053" THK.) STEEL MIN. Fy = 42 KSI MIN.

OVERALL FRAME SIZE		DOOR D.L.O		DESIGN PRESSURE (PSF)	
WIDTH	HEIGHT	WIDTH	HEIGHT	POSITIVE	NEGATIVE
100"	100"	23.75"	59.75"	+65.0	-65.0

SEE SHEET 12 FOR ADDITIONAL DESIGN PRESSURE REQUIREMENTS DUE TO HARDWARE COMPONENT SELECTION

4/18/2023 2:46 PM s:\projects\mesker mbm, llc\fb-23-0112 - fbc submittal - commercial steel doors revisions\dwg\15539\mdi003.dwg

TITLE: "N" SERIES COMMERCIAL
OUTSWINGING STEEL DOOR
(HVHZ) (IMPACT)
DOOR PANEL DETAILS

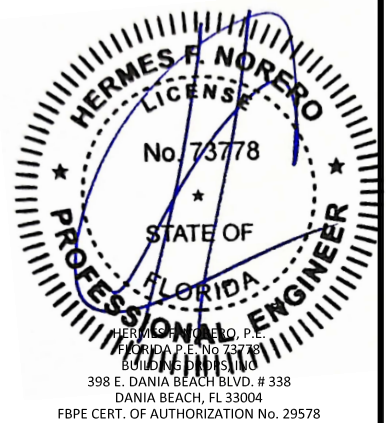
DOOR PANEL DETAILS

PREPARED BY:
BUILDING DROPS, INC.
398 E. DANIA BEACH BLVD., STE. 338
DANIA BEACH, FL 33004
PH: (954) 399-8478
FAX: (954) 744-4738
WEB: www.buildingdrops.com



REMARKS	BY	DATE
2020 FBC UPDATE	NUS	07/23/20
2023 NAME CHANGE	MG	03/06/23

THE INSTALLATION DETAILS DESCRIBED HEREIN ARE GENERIC AND MAY NOT REFLECT ACTUAL CONDITIONS FOR A SPECIFIC SITE. IF SITE CONDITIONS CAUSE INSTALLATION TO DEVIATE FROM THE REQUIREMENTS DETAILED HEREIN, A LICENSED ENGINEER OR ARCHITECT SHALL PREPARE SITE SPECIFIC DOCUMENTS FOR USE WITH THIS DOCUMENT.



FL #: **FL15539**

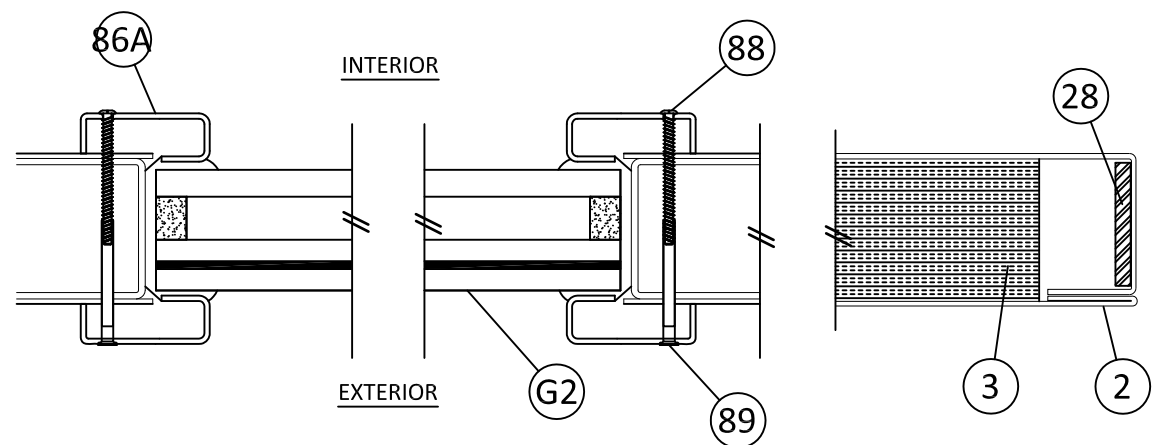
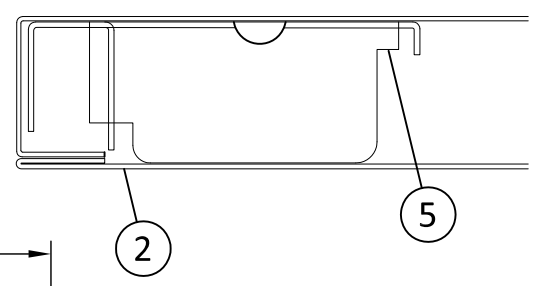
DATE: **06.03.16**

DWG. BY: **LS** CHK. BY: **HFN**

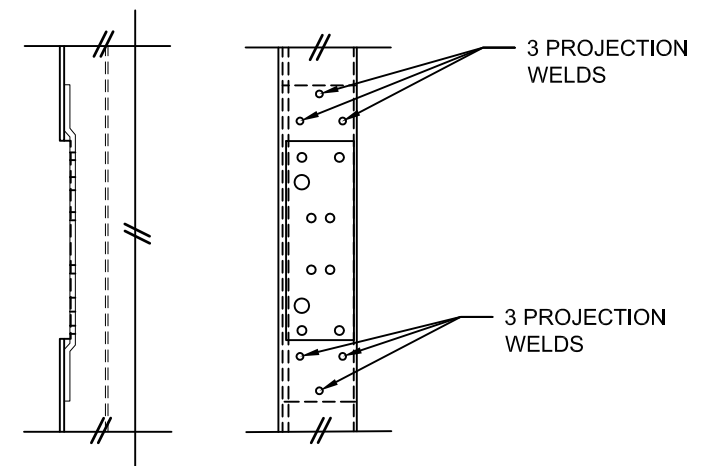
SCALE: **NTS**

DWG. #: **MDI003**

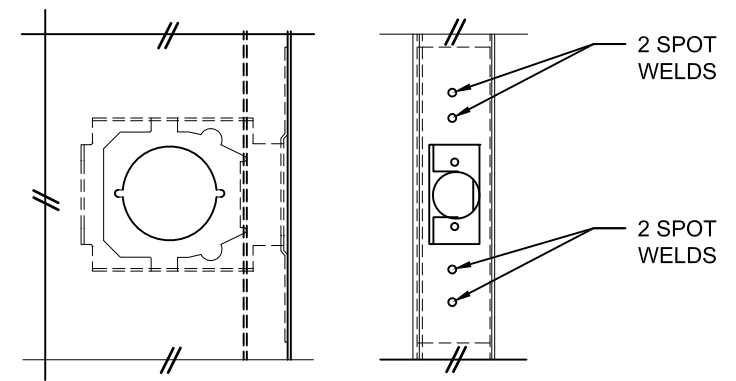
SHEET: **3**



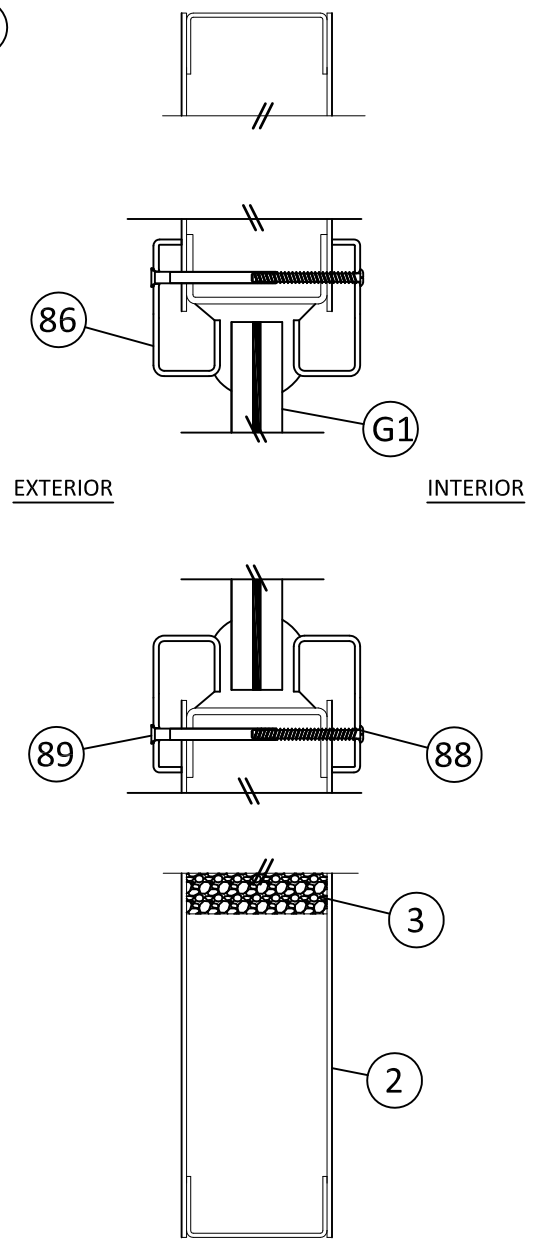
2 **HORIZONTAL CROSS SECTION**
3 DOOR PANEL



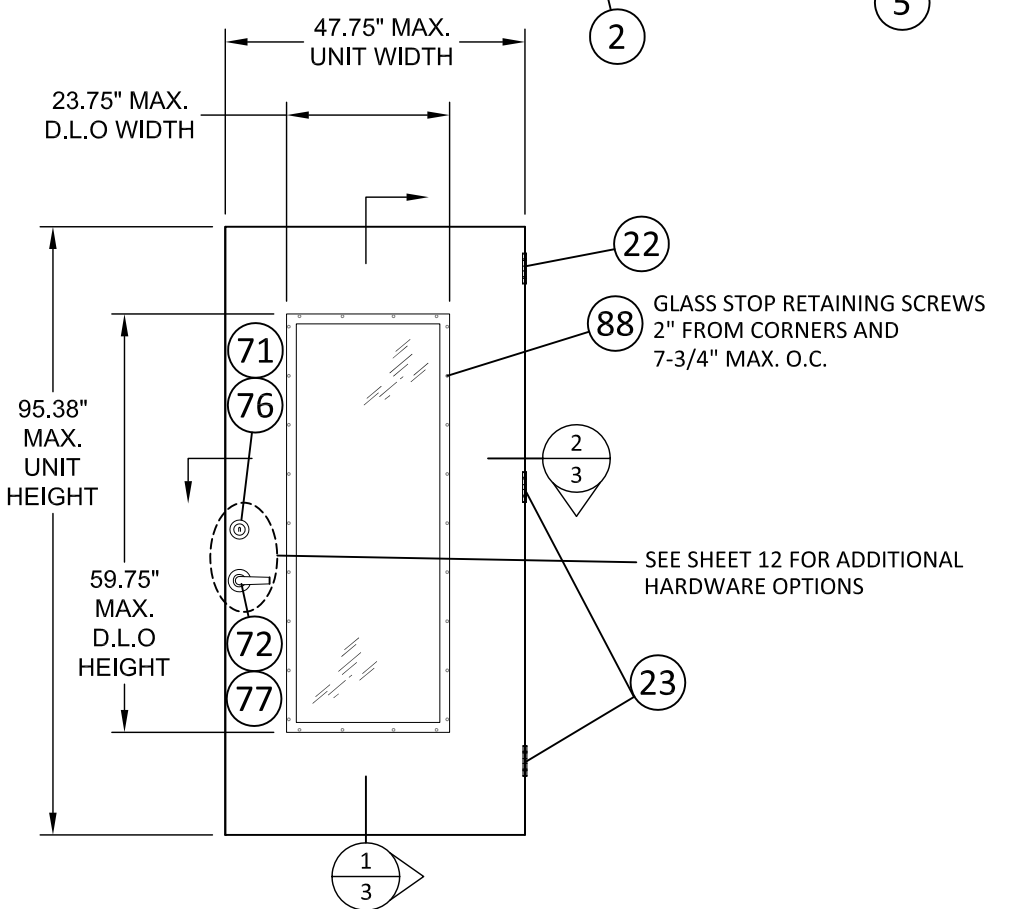
23 **DOOR HINGE REINFORCEMENT**



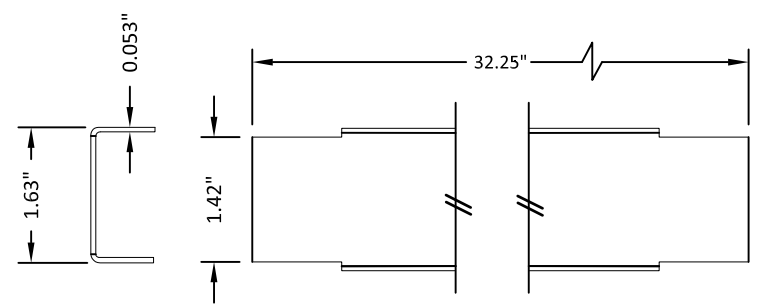
5 **LOCK BOX REINFORCEMENT**



1 **VERTICAL CROSS SECTION**
3 DOOR PANEL



1 **"N" STEEL DOOR PANEL**



4 **DOOR TOP & BOTTOM CLOSER**

4/18/2023 2:46 PM s:\projects\mesker mbm, llc\fb-23-0112 - fbc submittal - commercial steel doors revisions\dwgs\115539\mdi003.dwg

TYPICAL ANCHORS @ HEAD/JAMB: (REFER TO ELEVATION FOR SPACING)

- TYPE A** 3/8" DIA. DYNABOLT SLEEVE ANCHOR BY "ITW"
DIRECTLY INTO $f_c=3000$ PSI CONCRETE, 1-1/2" MIN. EMBED
DIRECTLY INTO GROUT FILLED CONCRETE BLOCK, 1-1/2" MIN. EMBED
MIN. EDGE DIST 2-1/2"
MIN. SPACING 4-1/2"
- TYPE B** 3/8" POWER-BOLT BY "POWERS"
DIRECTLY INTO $f_c=3000$ PSI CONCRETE, 2" MIN. EMBED
DIRECTLY INTO GROUT FILLED/HOLLOW CONCRETE BLOCK, 1-1/4" MIN. EMBED
MIN. EDGE DIST 3-3/4"
MIN. SPACING 4-1/2"
- TYPE C** 5/16" DIA. SMS OR MACHINE BOLTS (MIN. GRADE 5 CRS) OR ST/ST
STEEL : $F_y = 36$ KSI MIN.
INTO METAL STRUCTURES (STEEL OR ALUMINUM 1/8" MIN. THICK.)
ALUMINUM : 6063-T6 MIN.
(STEEL IN CONTACT WITH ALUMINUM TO BE PLATED OR PAINTED)

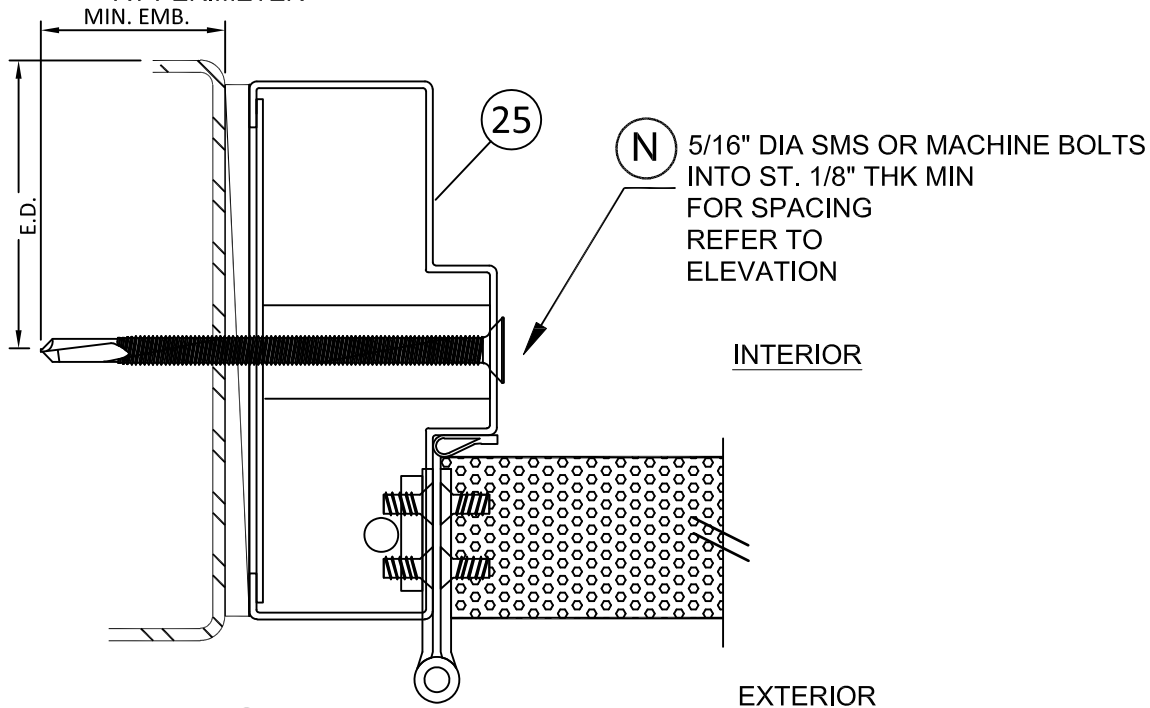
- TYPE F** 3/8" DIA. HLC SLEEVE ANCHOR BY "HILTI"
DIRECTLY INTO $f_c=3000$ PSI CONCRETE
MIN. EMBED. 1-3/8"
MIN. EDGE DIST 3-1/4"
MIN. SPACING 4-1/2"
- TYPE F1** 3/8" DIA. HLC SLEEVE ANCHOR BY "HILTI"
DIRECTLY INTO GROUT FILLED/HOLLOW CONCRETE BLOCK
MIN. EMBED. 1-3/8"
MIN. EDGE DIST 3-1/2"
MIN. SPACING 4-1/2"
- TYPE G** 3/8" DIA. LOK BOLT BY "POWERS"
DIRECTLY INTO $f_c=3000$ PSI CONCRETE
MIN. EMBED. 1-5/8"
MIN. EDGE DIST 3-3/4"
MIN. SPACING 4-1/2"
- TYPE G1** 3/8" DIA. LOK BOLT BY "POWERS"
DIRECTLY INTO GROUT FILLED/HOLLOW CONCRETE BLOCK
MIN. EMBED. 1-1/2"
MIN. EDGE DIST 3-3/4"
MIN. SPACING 4-1/2"

TYPICAL ANCHORS @ THRESHOLD: (REFER TO ELEVATION FOR SPACING)

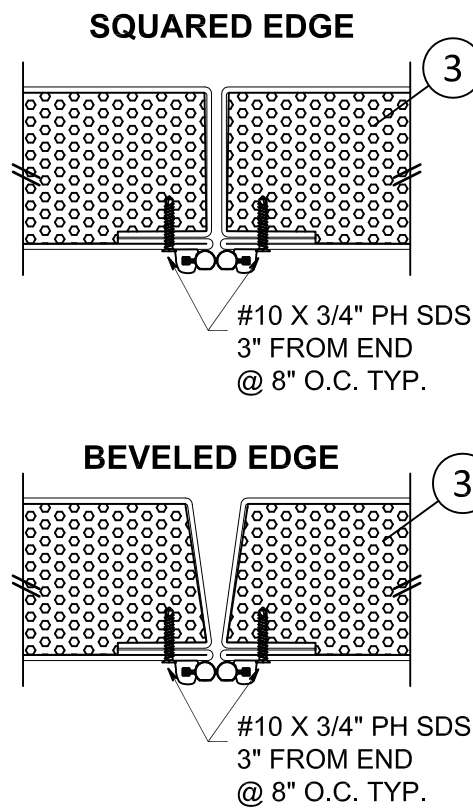
- TYPE D** 1/4" TAPCON BY "ITW" DIRECTLY INTO $f_c=3000$ PSI CONCRETE
1-1/4" MIN. EMBED
MIN. EDGE DIST 2-1/2"
MIN. SPACING 3"
- TYPE E** 5/16" DIA. ULTRACONS BY "ELCO" DIRECTLY INTO $f_c=3000$ PSI CONCRETE
1-3/4" MIN. EMBED
MIN. EDGE DIST 2-3/16"
MIN. SPACING 3"

SEALANT:

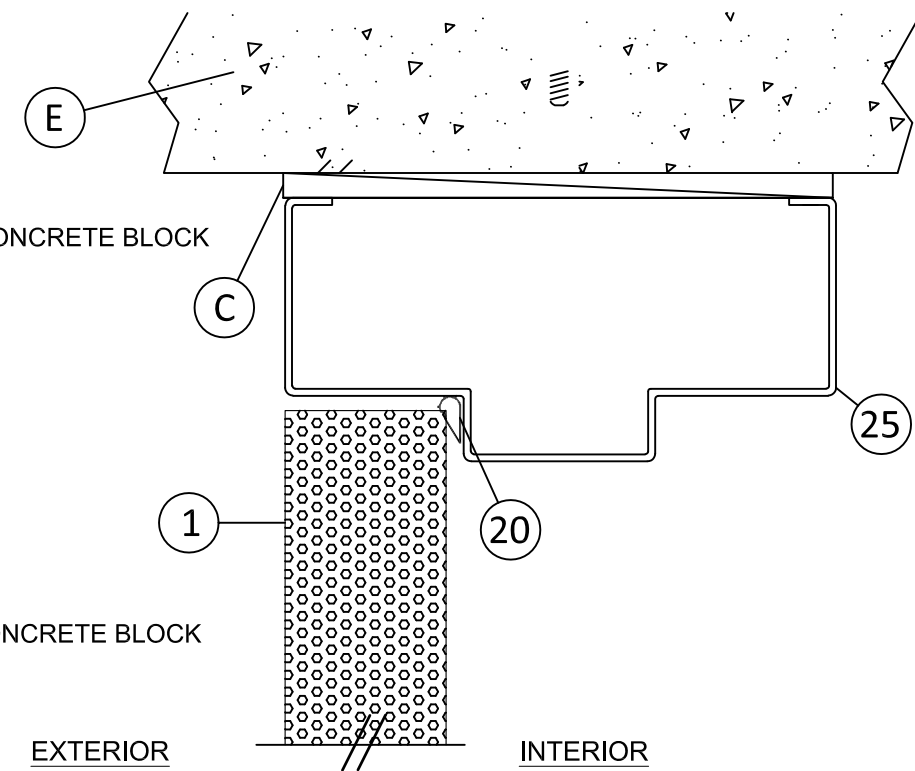
ALL FRAME JOINTS AND CORNERS TO BE SEALED WITH SILICONE AT PERIMETER



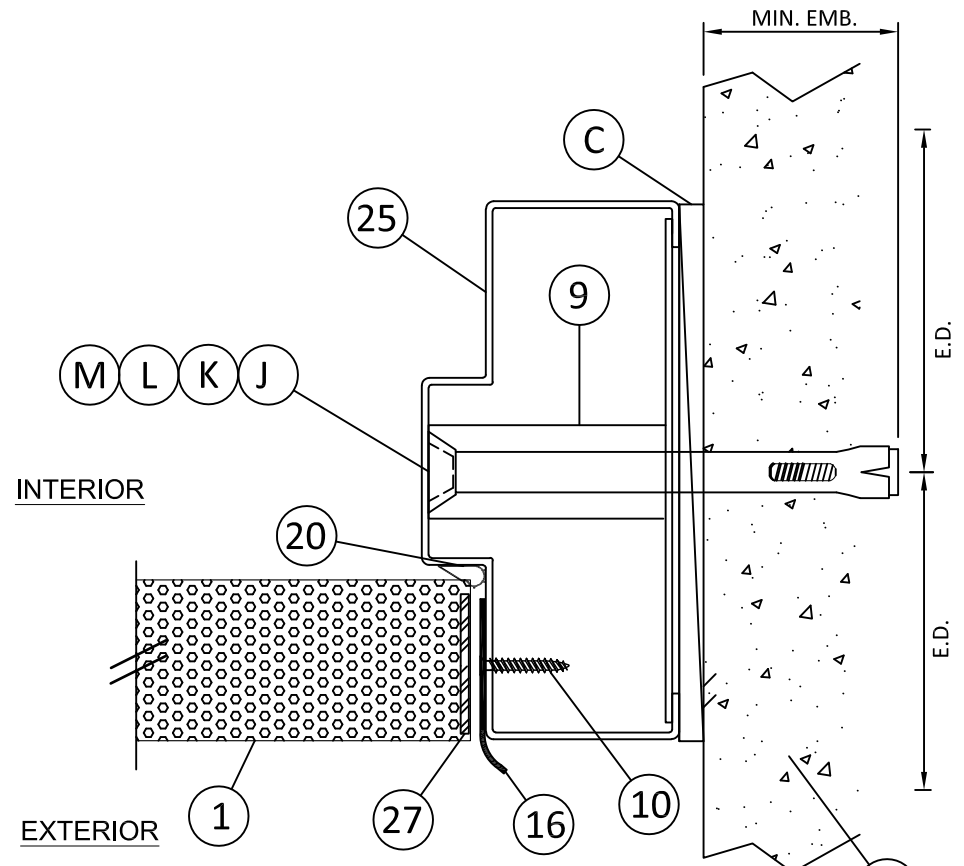
1 ANCHOR OPTION



2 HORIZONTAL CROSS SECTION DOOR EDGE OPTIONS



3 HORIZONTAL CROSS SECTION W/ 2" FRAME



4 HORIZONTAL CROSS SECTION



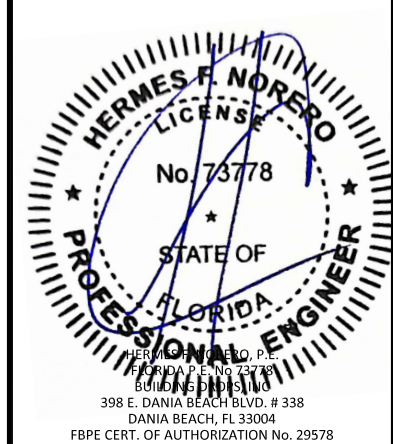
MESKER MBM, LLC
3440 Standwood Blvd.
Huntsville, AL 35811
PH: (256) 851-6670

TITLE: "N" SERIES COMMERCIAL OUTSWING STEEL DOOR (HVHZ) (IMPACT)
VERTICAL & HORIZONTAL SECTIONS

PREPARED BY: BUILDING DROPS, INC.
398 E. DANIA BEACH BLVD., STE. 338
DANIA BEACH, FL 33004
PH: (954) 399-8478
FAX: (954) 744-4738
WEB: www.buildingdrops.com

REMARKS	BY	DATE
2020 FBC UPDATE	NUS	07/23/20
2023 NAME CHANGE	MG	03/06/23

THE INSTALLATION DETAILS DESCRIBED HEREIN ARE GENERIC AND MAY NOT REFLECT ACTUAL CONDITIONS FOR A SPECIFIC SITE. IF SITE CONDITIONS CAUSE INSTALLATION TO DEVIATE FROM THE REQUIREMENTS DETAILED HEREIN, A LICENSED ENGINEER OR ARCHITECT SHALL PREPARE SITE SPECIFIC DOCUMENTS FOR USE WITH THIS DOCUMENT.



FL #:

FL15539

DATE: 06.03.16

DWG. BY: LS CHK. BY: HFN

SCALE: NTS

DWG. #: MDI003

SHEET:

4/18/2023 2:46 PM
s:\projects\mesker mbm, llc\fb-23-0112 - fbc submittal - commercial steel doors revisions\dwg\15539\md003.dwg

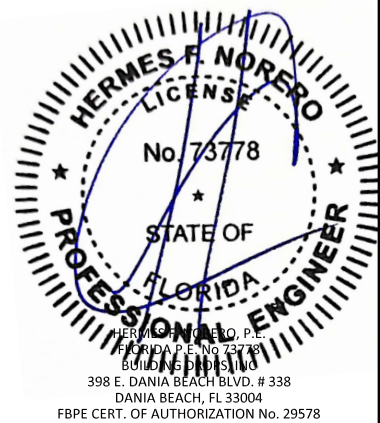
TITLE: "N" SERIES COMMERCIAL
OUTSWING STEEL DOOR
(HVHZ) (IMPACT)
VERTICAL SECTIONS
& GLAZING DETAILS

PREPARED BY:
BUILDING DROPS, INC.
398 E. DANIA BEACH BLVD., STE. 338
DANIA BEACH, FL 33004
PH: (954) 399-8478
FAX: (954) 744-4738
WEB: www.buildingdrops.com



REMARKS	BY	DATE
2020 FBC UPDATE	NUS	07/23/20
2023 NAME CHANGE	MG	03/06/23

THE INSTALLATION DETAILS DESCRIBED HEREIN ARE GENERIC AND MAY NOT REFLECT ACTUAL CONDITIONS FOR A SPECIFIC SITE. IF SITE CONDITIONS CAUSE INSTALLATION TO DEVIATE FROM THE REQUIREMENTS DETAILED HEREIN, A LICENSED ENGINEER OR ARCHITECT SHALL PREPARE SITE SPECIFIC DOCUMENTS FOR USE WITH THIS DOCUMENT.



FL #:

FL15539

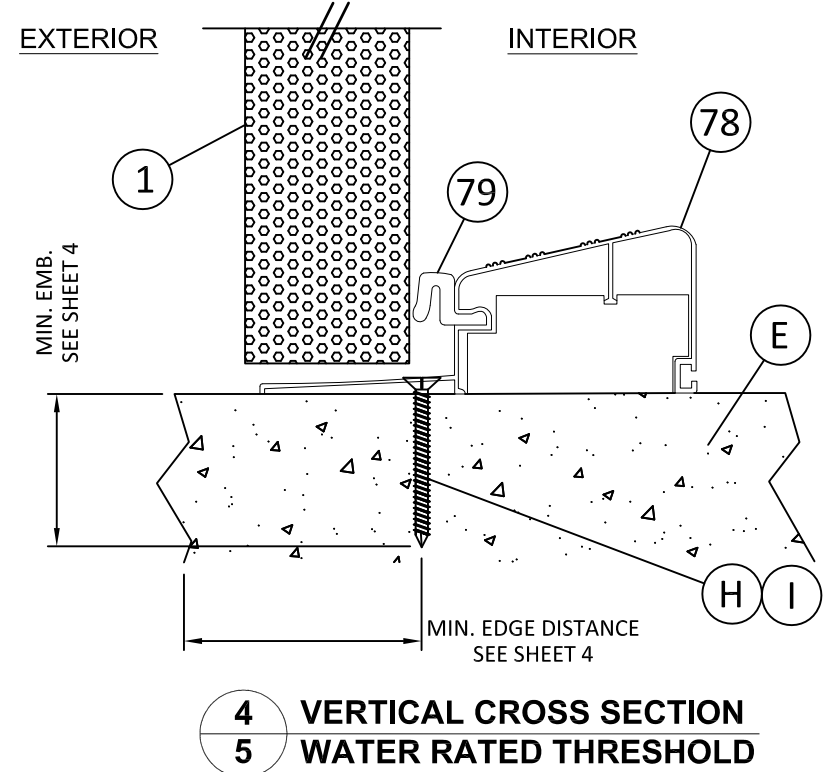
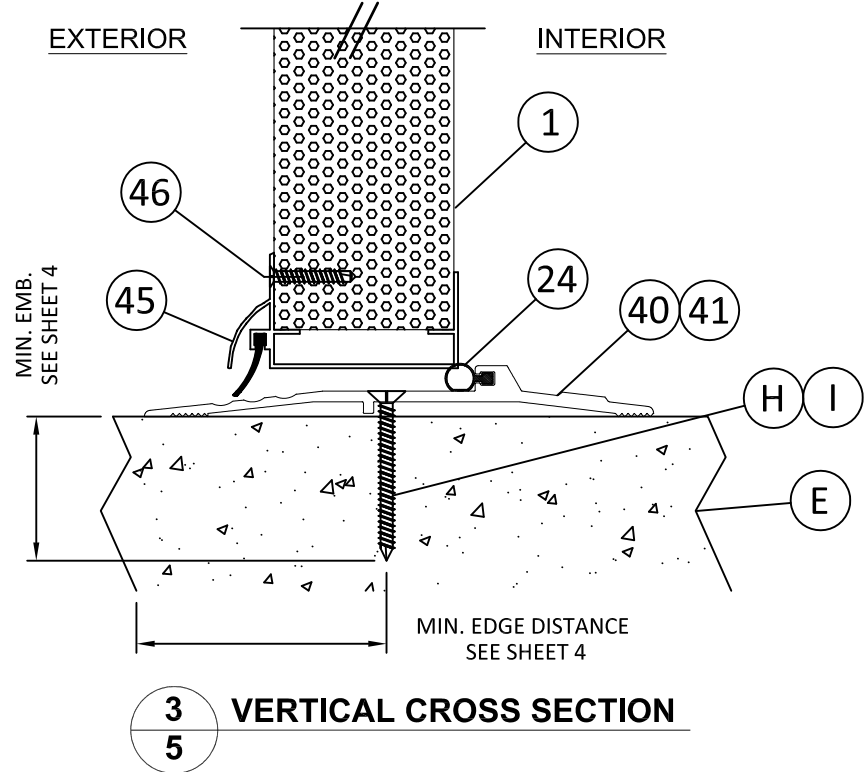
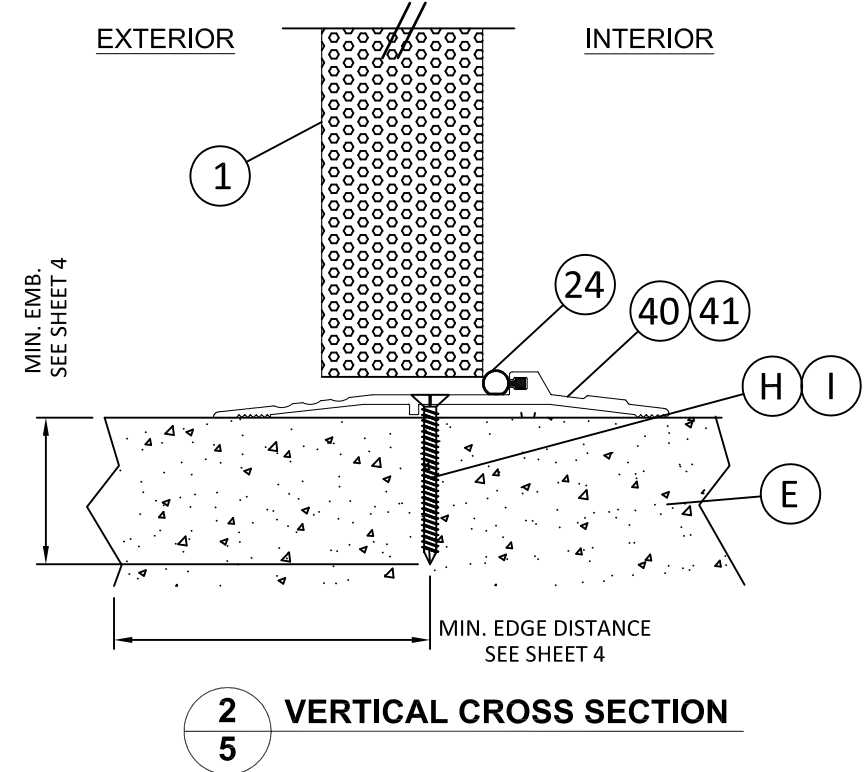
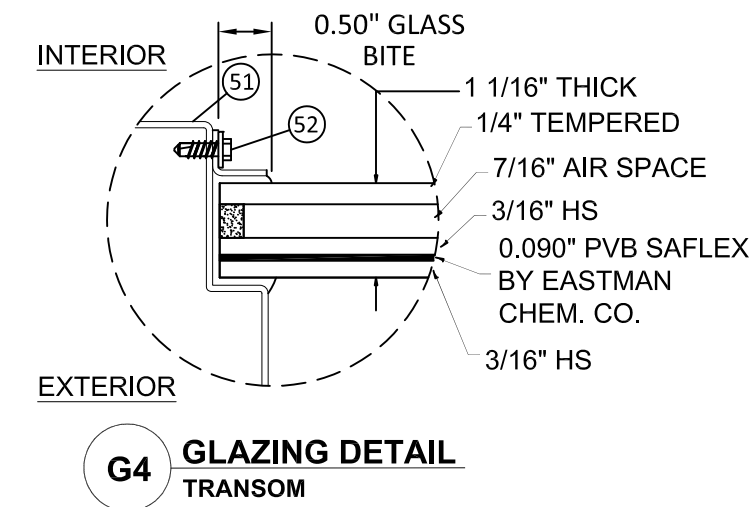
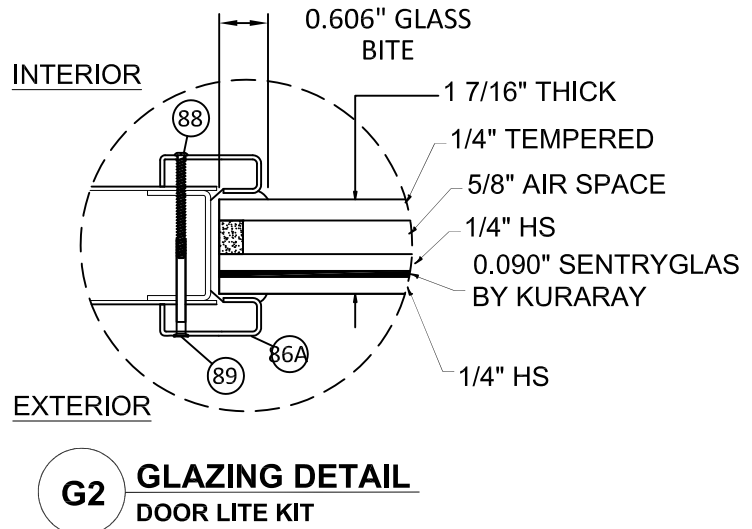
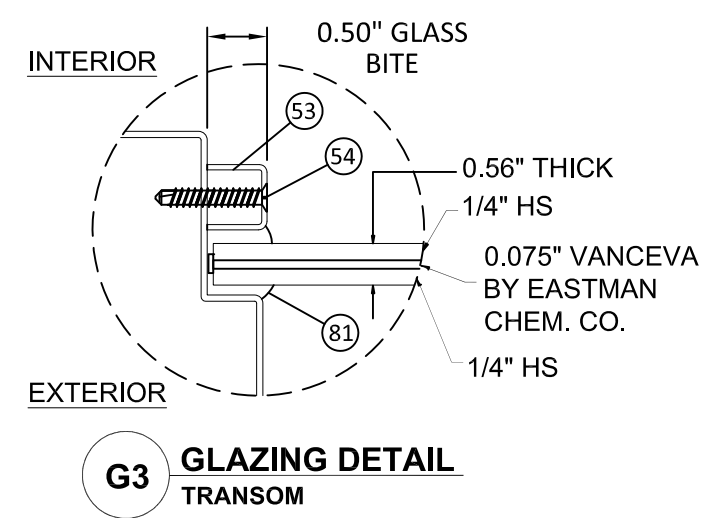
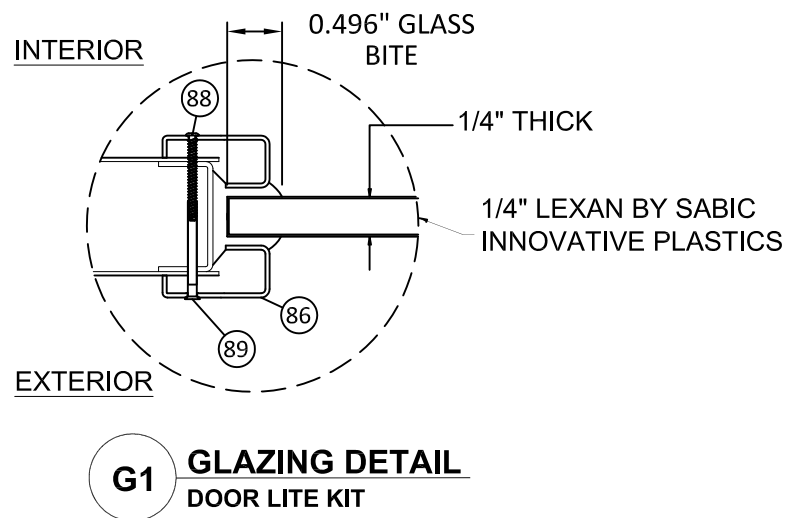
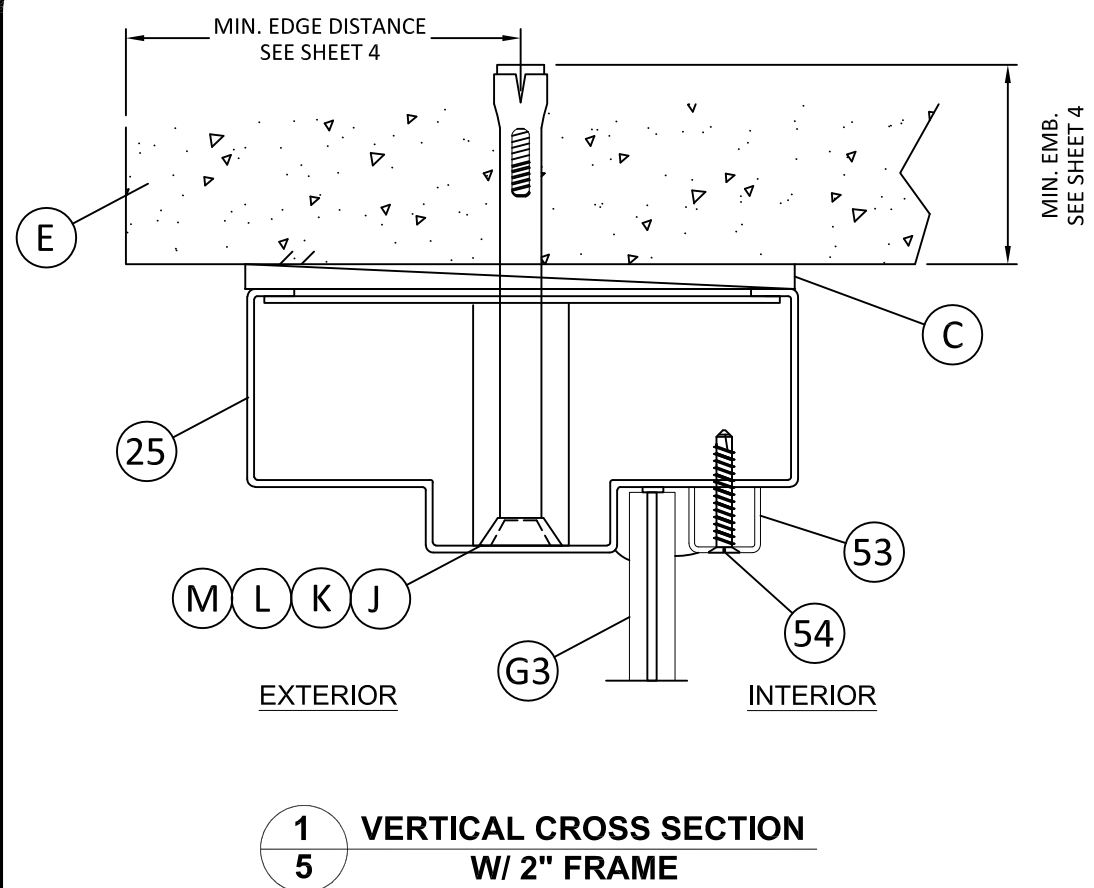
DATE: **06.03.16**

DWG. BY: **LS** CHK. BY: **HFN**

SCALE: **NTS**

DWG. #: **MDI003**

SHEET:



4/18/2023 2:46 PM
s:\projects\mesker mbm, llc\fb\23-0112 - fbc submittal - commercial steel doors revisions\dwg\15539\mdi003.dwg



MESKER MBM, LLC
3440 Standwood Blvd.
Huntsville, AL 35811
PH: (256) 851-6670

TITLE: "N" SERIES COMMERCIAL
OUTSWING STEEL DOOR
(HVHZ) (IMPACT)

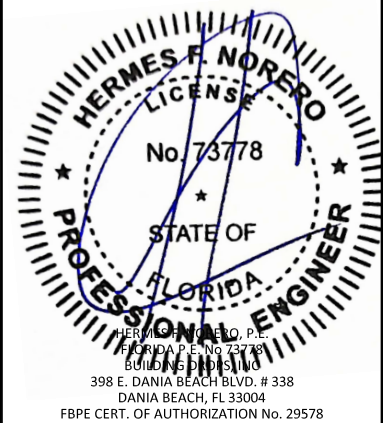
VERTICAL & HORIZONTAL
SECTIONS

PREPARED BY:
BUILDING DROPS, INC.
398 E. DANIA BEACH BLVD., STE. 338
DANIA BEACH, FL 33004
PH: (954) 399-8478
FAX: (954) 744-4738
WEB: www.buildingdrops.com

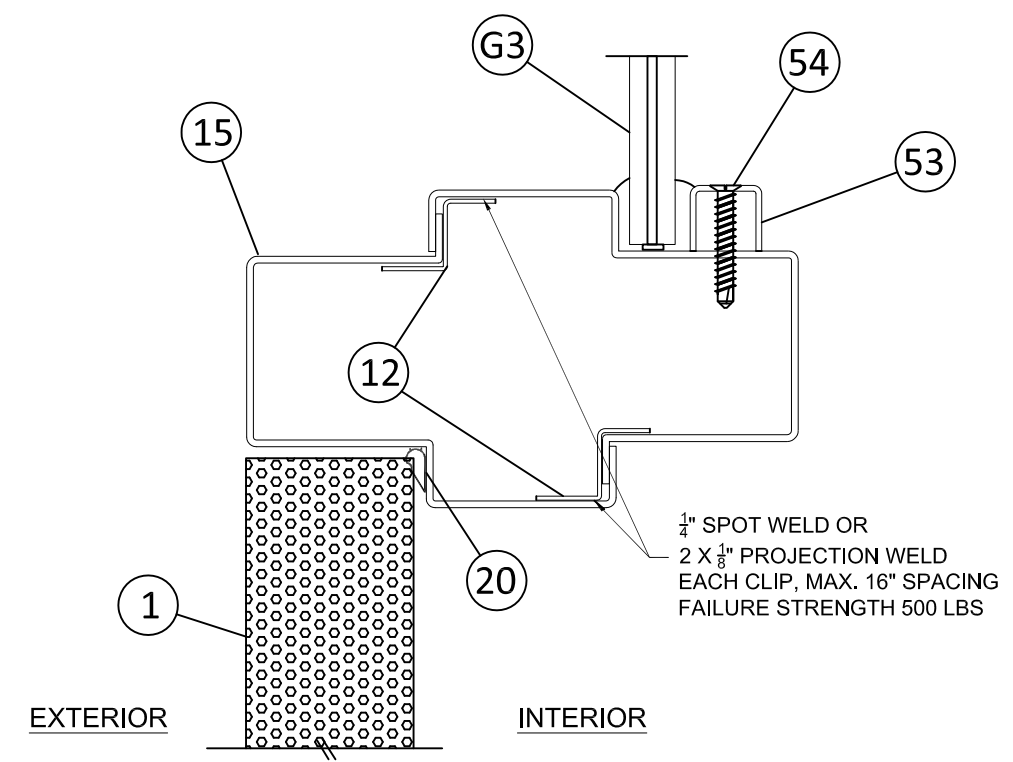


REMARKS	BY	DATE
2020 FBC UPDATE	NUS	07/23/20
2023 NAME CHANGE	MG	03/06/23

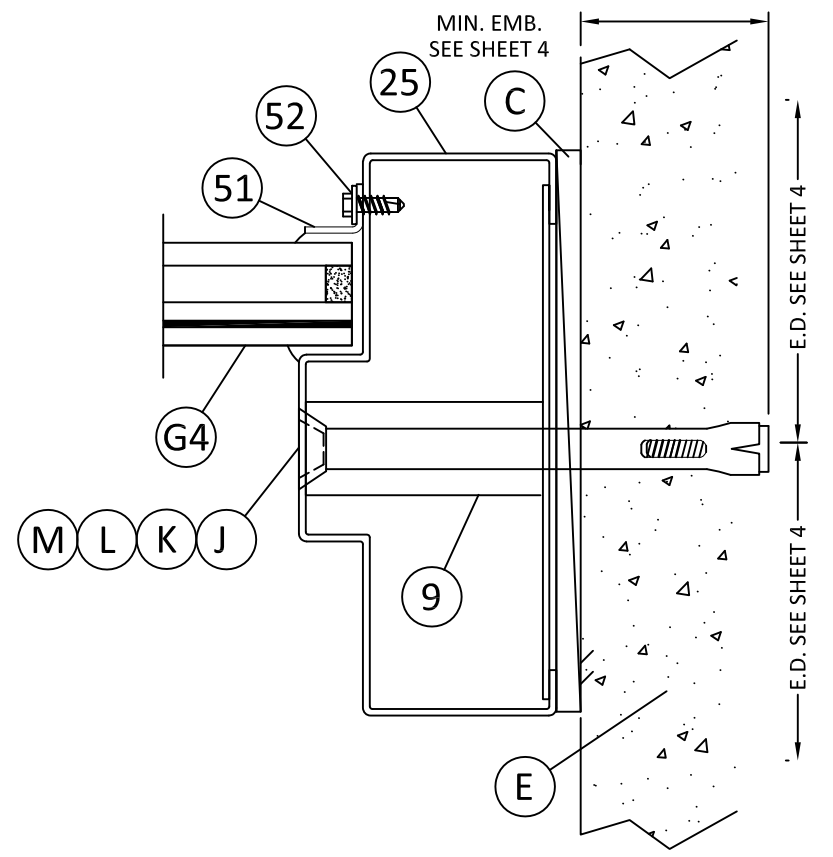
THE INSTALLATION DETAILS DESCRIBED HEREIN ARE GENERIC AND MAY NOT REFLECT ACTUAL CONDITIONS FOR A SPECIFIC SITE. IF SITE CONDITIONS CAUSE INSTALLATION TO DEVIATE FROM THE REQUIREMENTS DETAILED HEREIN, A LICENSED ENGINEER OR ARCHITECT SHALL PREPARE SITE SPECIFIC DOCUMENTS FOR USE WITH THIS DOCUMENT.



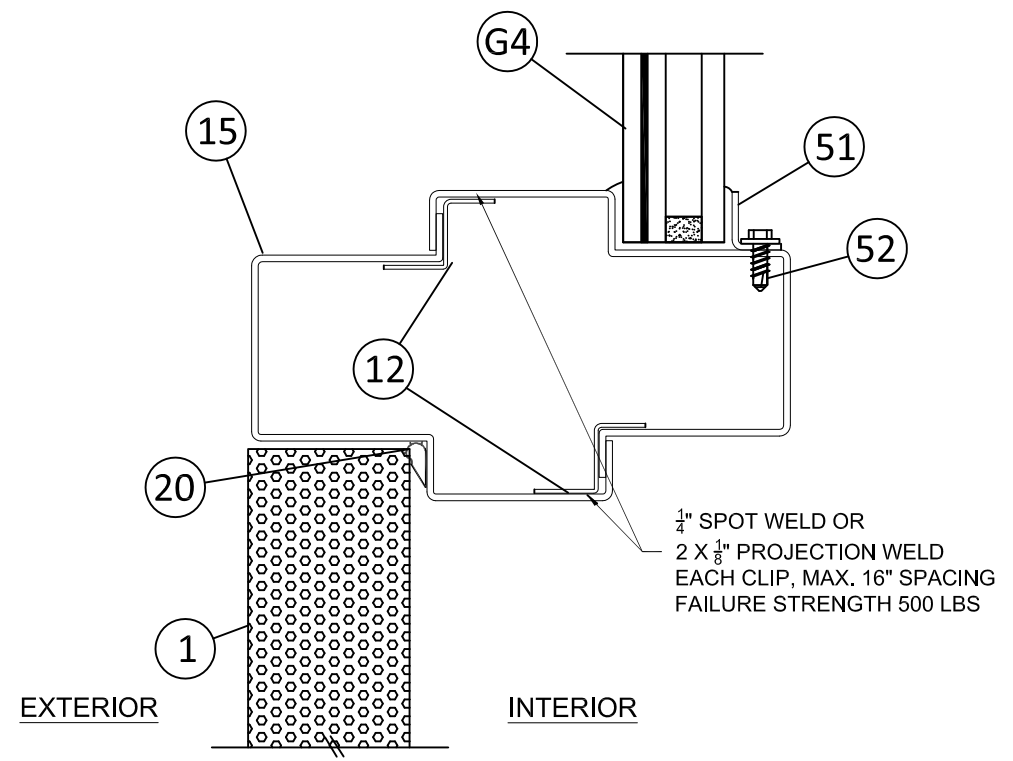
FL #:	FL15539
DATE:	06.03.16
DWG. BY:	LS
CHK. BY:	HFN
SCALE:	NTS
DWG. #:	MDI003
SHEET:	6



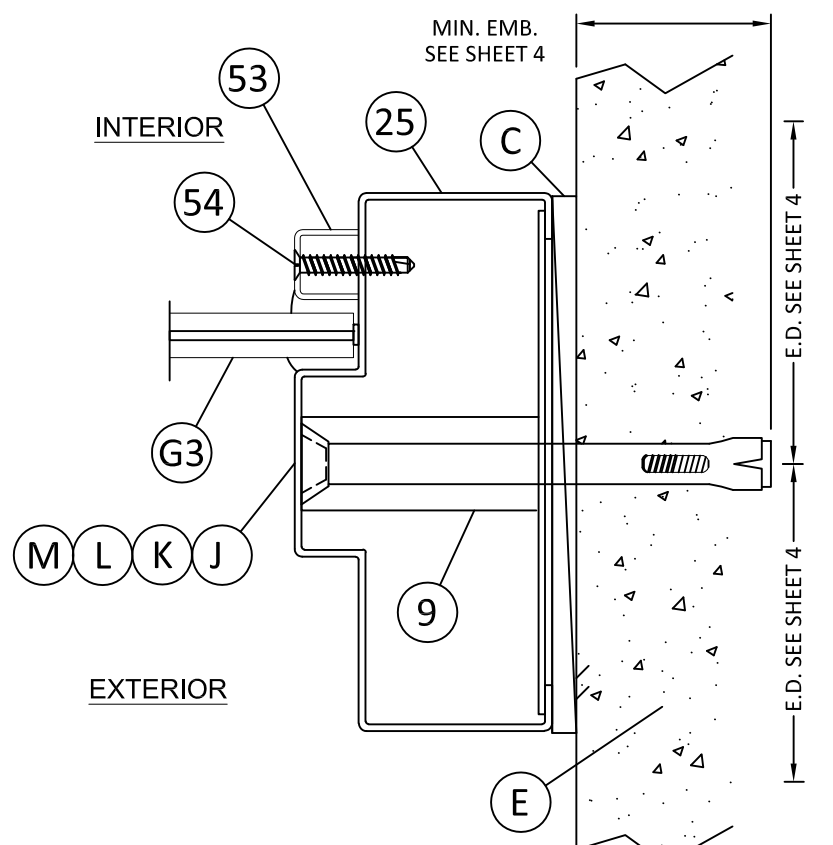
1 VERTICAL CROSS SECTION
6



4 HORIZONTAL CROSS SECTION
6 OPTIONAL GLAZING



2 VERTICAL CROSS SECTION
6 OPTIONAL GLAZING



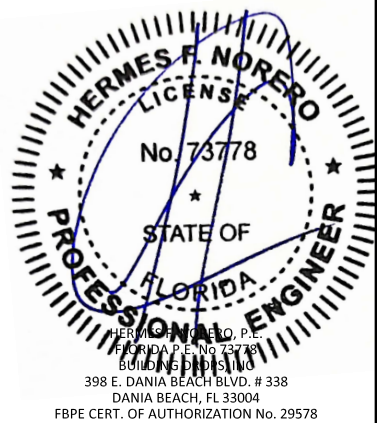
3 HORIZONTAL CROSS SECTION
6 OPTIONAL GLAZING

4/18/2023 2:47 PM
s:\projects\mesker mbm, llc\fb\23-0112 - fbc submittal - commercial steel doors\revisions\dwg\115539\mdi003.dwg



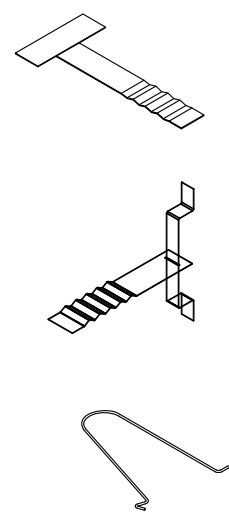
REMARKS	BY	DATE
2020 FBC UPDATE	NUS	07/23/20
2023 NAME CHANGE	MG	03/06/23

THE INSTALLATION DETAILS DESCRIBED HEREIN ARE GENERIC AND MAY NOT REFLECT ACTUAL CONDITIONS FOR A SPECIFIC SITE. IF SITE CONDITIONS CAUSE INSTALLATION TO DEVIATE FROM THE REQUIREMENTS DETAILED HEREIN, A LICENSED ENGINEER OR ARCHITECT SHALL PREPARE SITE SPECIFIC DOCUMENTS FOR USE WITH THIS DOCUMENT.



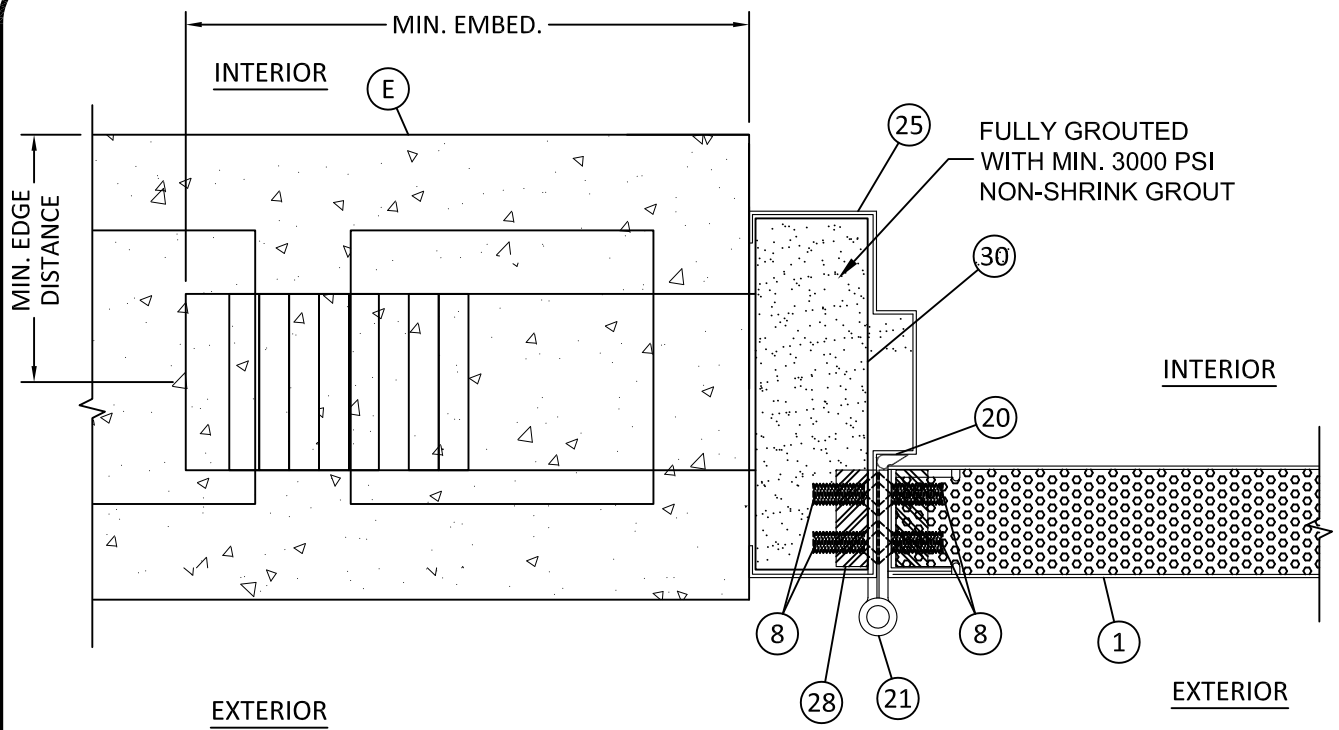
FL #:	FL15539
DATE:	06.03.16
DWG. BY:	LS
CHK. BY:	HFN
SCALE:	NTS
DWG. #:	MDI003
SHEET:	7

TYPICAL ANCHORS @ JAMB: (REFER TO ELEVATION FOR SPACING)

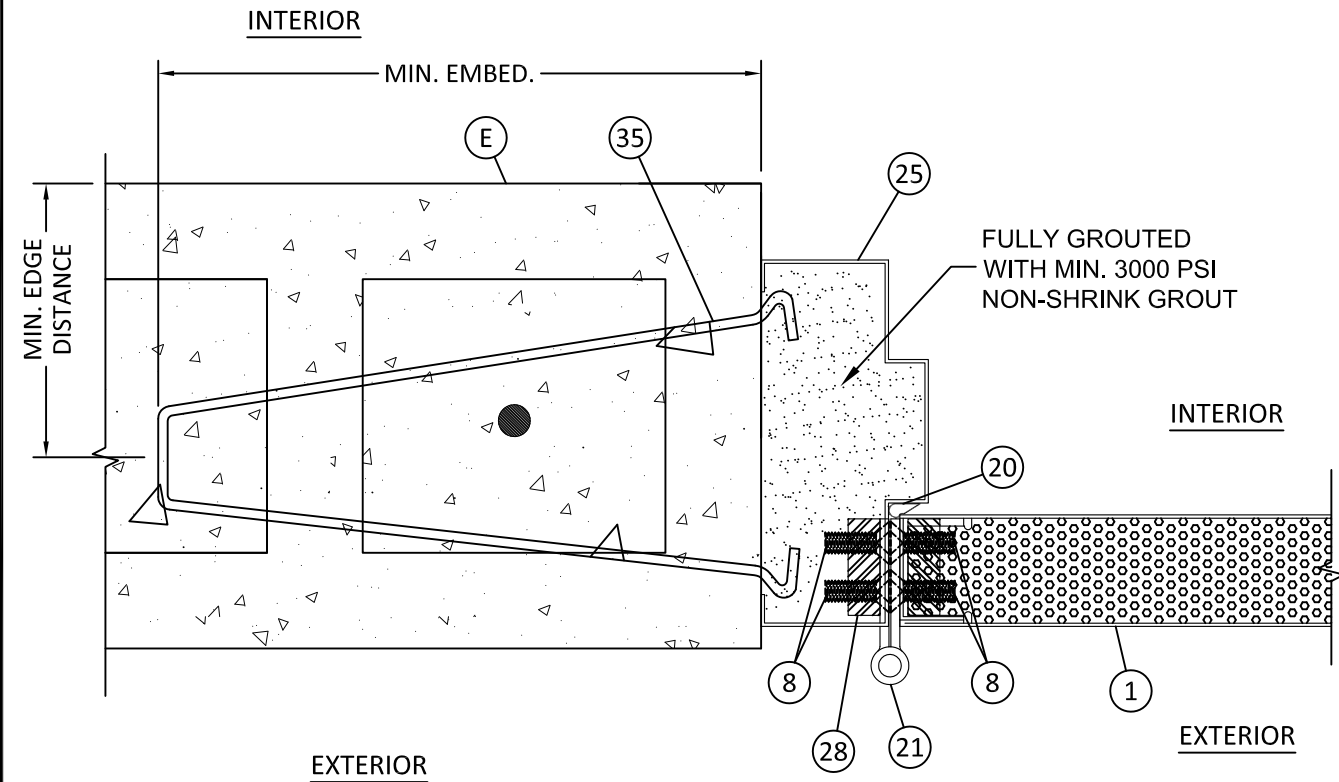


- TYPE H (30) STRAP ANCHOR (PF-2) (Fy=60 KSI) MIN.
DIRECTLY INTO fc'=3000 PSI GROUT FILLED CONCRETE BLOCK
6" MIN. EMBEDMENT, 2 1/2 " MIN. EDGE DISTANCE, 8" MIN. SPACING
- TYPE I (31) STRAP ANCHOR (PS-241) (Fy=60 KSI) MIN.
DIRECTLY INTO fc'=3000 PSI GROUT FILLED CONCRETE BLOCK
6" MIN. EMBEDMENT, 2 1/2 " MIN. EDGE DISTANCE, 8" MIN. SPACING
- TYPE J (35) WIRE ANCHOR (PF-2) (Fy=60KSI) MIN.
DIRECTLY INTO fc'=3000 PSI CONCRETE, 1-1/2" MIN. EMBED
DIRECTLY INTO GROUT FILLED/HOLLOW CONCRETE BLOCK, 1-1/4" MIN. EMBED
8 3/4 " MIN. EMBEDMENT, 1 5/8 " MIN. EDGE DISTANCE

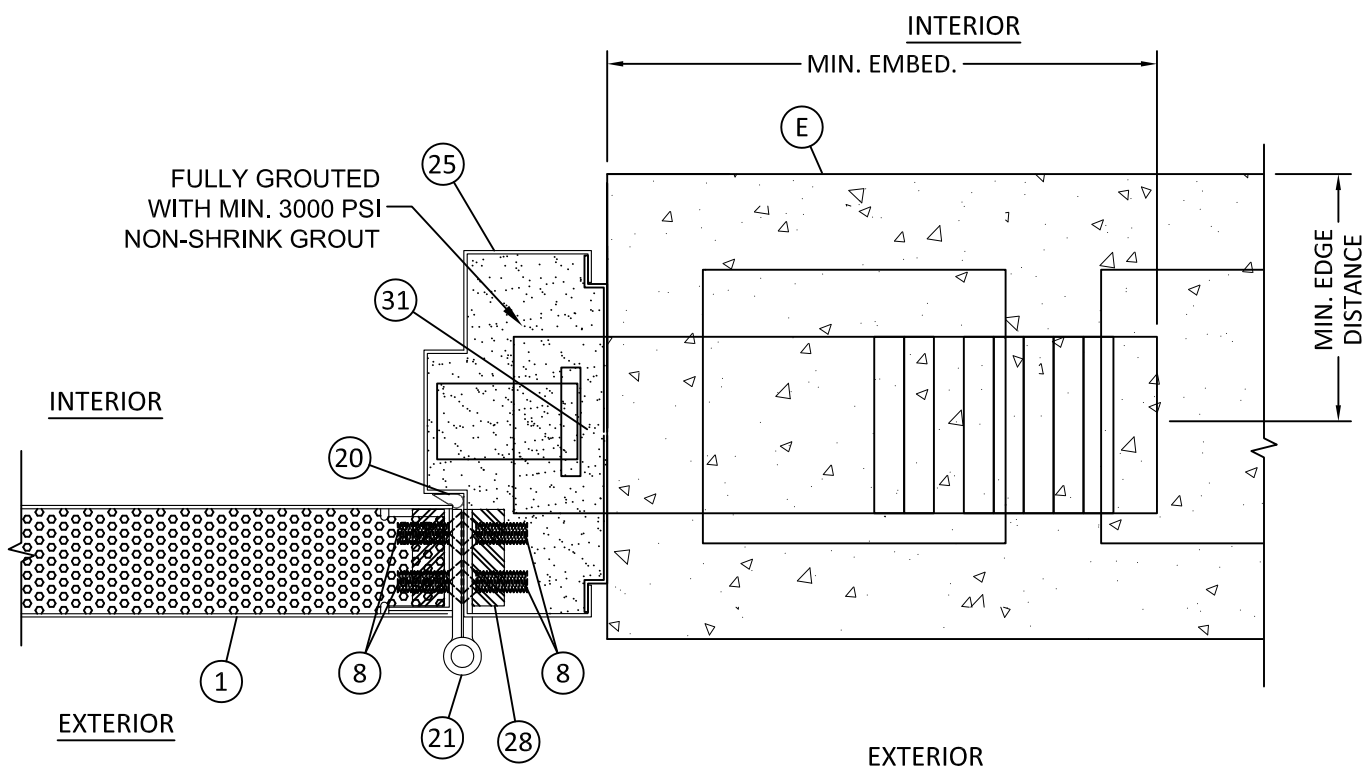
NOTE:
HEAD & JAMBS TO BE FULLY GOUTED WITH MIN. 3000 PSI NON-SHRINK GROUT



2 HORIZONTAL CROSS SECTION
7 STRAP ANCHOR (PF-2)



1 HORIZONTAL CROSS SECTION
7 WIRE ANCHOR



3 HORIZONTAL CROSS SECTION
7 STRAP ANCHOR (PS-241)

4/18/2023 2:47 PM

s:\projects\mesker mbm, llc\fb\23-0112 - fbc submittal - commercial steel doors revisions\dwg\15539\mdi003.dwg

TITLE: "N" SERIES COMMERCIAL OUTSWING STEEL DOOR (HVHZ) (IMPACT)

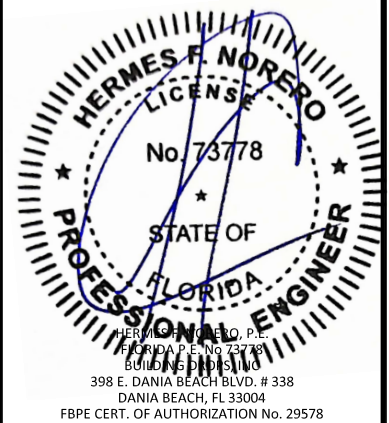
HORIZONTAL SECTIONS

PREPARED BY: **BUILDING DROPS, INC.**
398 E. DANIA BEACH BLVD., STE. 338
DANIA BEACH, FL 33004
PH: (954) 399-8478
FAX: (954) 744-4738
WEB: www.buildingdrops.com



REMARKS	BY	DATE
2020 FBC UPDATE	NUS	07/23/20
2023 NAME CHANGE	MG	03/06/23

THE INSTALLATION DETAILS DESCRIBED HEREIN ARE GENERIC AND MAY NOT REFLECT ACTUAL CONDITIONS FOR A SPECIFIC SITE. IF SITE CONDITIONS CAUSE INSTALLATION TO DEVIATE FROM THE REQUIREMENTS DETAILED HEREIN, A LICENSED ENGINEER OR ARCHITECT SHALL PREPARE SITE SPECIFIC DOCUMENTS FOR USE WITH THIS DOCUMENT.



FL #:

FL15539

DATE: **06.03.16**

DWG. BY: **LS** CHK. BY: **HFN**

SCALE: **NTS**

DWG. #: **MDI003**

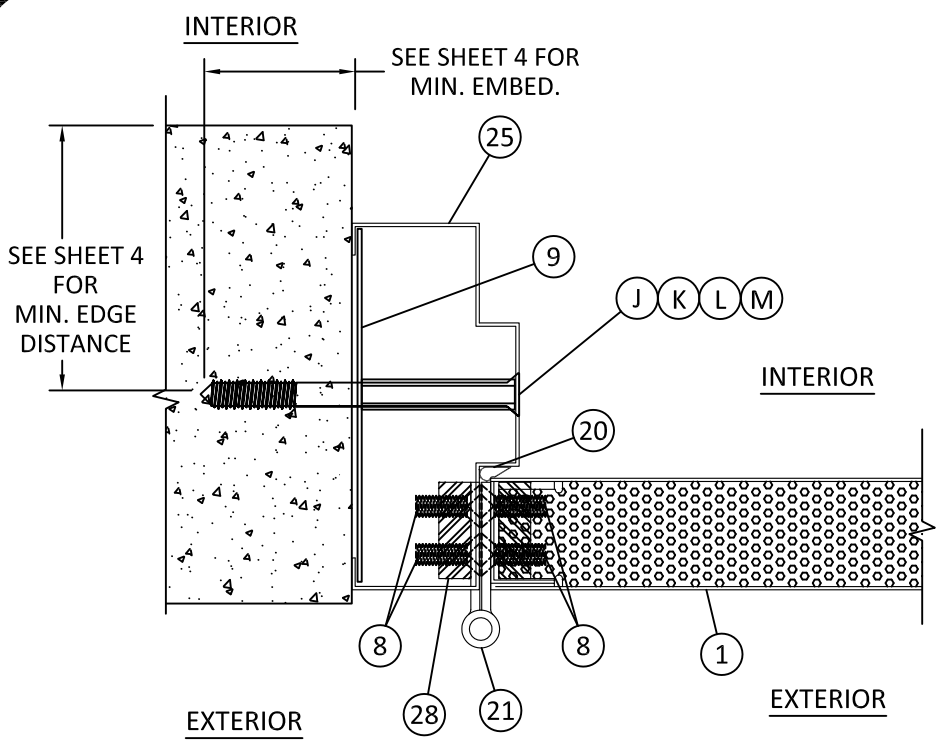
SHEET:

8

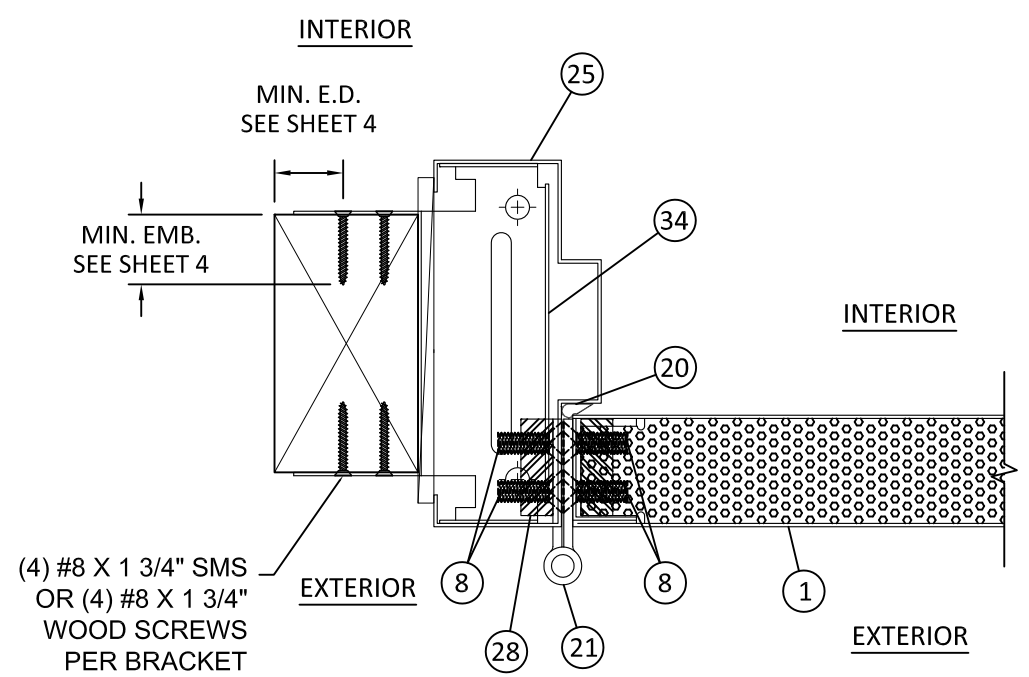
OF 14

TYPICAL ANCHORS @ JAMB: (REFER TO ELEVATION FOR SPACING)

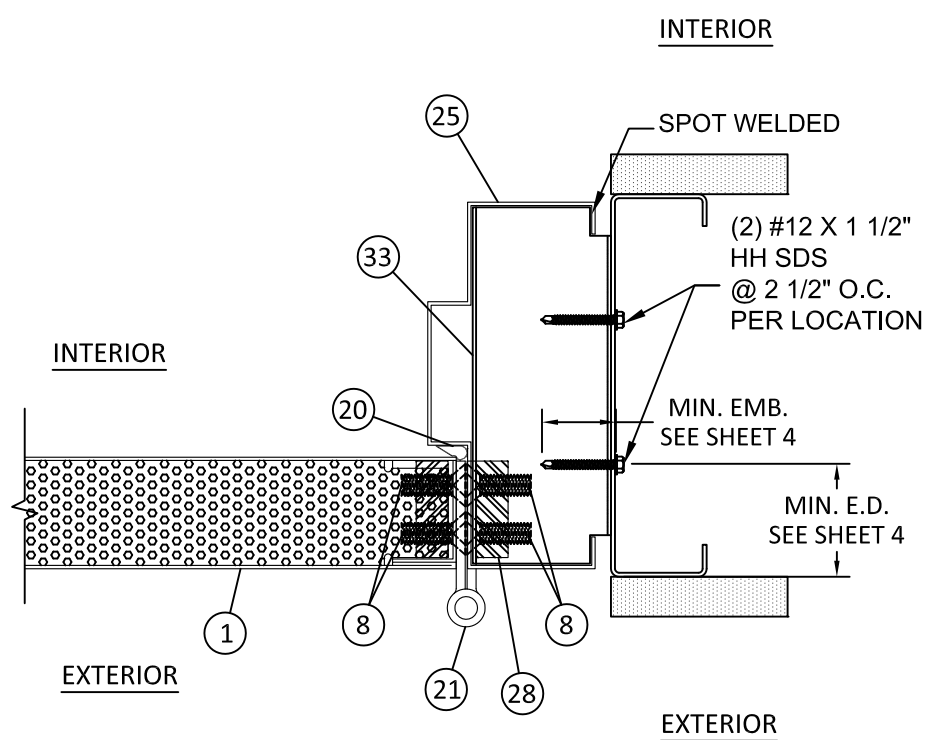
- TYPE L** TUBE ANCHOR (PF-10)
 SEE ELEVATIONS FOR ANCHOR BRACKET LAYOUT
 SEE SHEET 4 FOR ANCHOR TYPES AND SPACING REQUIREMENTS
- TYPE M** Z ANCHOR (PF-9) WITH 2 #12 X 1 1/2" HH SDS
 SEE ELEVATIONS FOR ANCHOR BRACKET LAYOUT
 THREE THREADS MIN. PENETRATION BEYOND STEEL
 1/2" MIN. EDGE DISTANCE, 2 1/2" SPACING
- TYPE N** WOOD STUD ANCHOR (F-24) WITH 4 #8 X 1 3/4" SMS OR
 #8 X 1 3/4" WOOD SCREWS
 SEE ELEVATIONS FOR ANCHOR BRACKET LAYOUT
 1 1/2" MIN. EMBEDMENT, 1/2" MIN. EDGE DISTANCE,
 1" SPACING



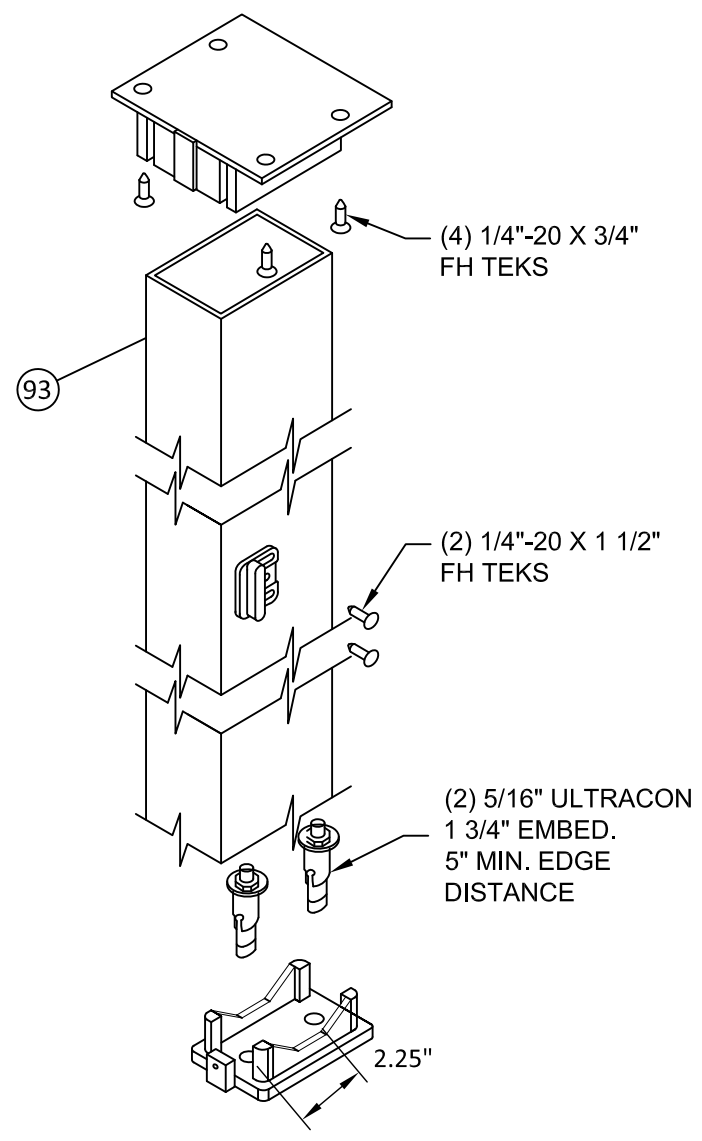
2 HORIZONTAL CROSS SECTION
8 TUBE ANCHOR



1 HORIZONTAL CROSS SECTION
8 WOOD STUD ANCHOR



3 HORIZONTAL CROSS SECTION
8 Z ANCHOR



**DESIGN HARDWARE SERIES
KRM REMOVABLE MULLION**
Fy = 36 KSI MIN.
1/8" THK. STEEL

4/18/2023 2:47 PM
s:\projects\mesker mbm, llc\fb\23-0112 - fbc submittal - commercial steel doors revisions\dwg\15539\md003.dwg

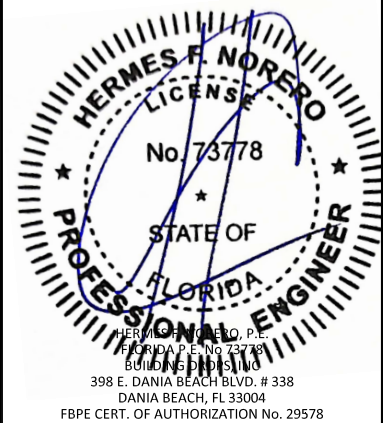
TITLE: "N" SERIES COMMERCIAL
OUTSWING STEEL DOOR
(HVHZ) (IMPACT)
ANCHORING DETAILS

PREPARED BY:
BUILDING DROPS, INC.
398 E. DANIA BEACH BLVD., STE. 338
DANIA BEACH, FL 33004
PH: (954) 399-8478
FAX: (954) 744-4738
WEB: www.buildingdrops.com



REMARKS	BY	DATE
2020 FBC UPDATE	NUS	07/23/20
2023 NAME CHANGE	MG	03/06/23

THE INSTALLATION DETAILS DESCRIBED HEREIN ARE GENERIC AND MAY NOT REFLECT ACTUAL CONDITIONS FOR A SPECIFIC SITE. IF SITE CONDITIONS CAUSE INSTALLATION TO DEVIATE FROM THE REQUIREMENTS DETAILED HEREIN, A LICENSED ENGINEER OR ARCHITECT SHALL PREPARE SITE SPECIFIC DOCUMENTS FOR USE WITH THIS DOCUMENT.



FL #: **FL15539**

DATE: **06.03.16**

DWG. BY: **LS** CHK. BY: **HFN**

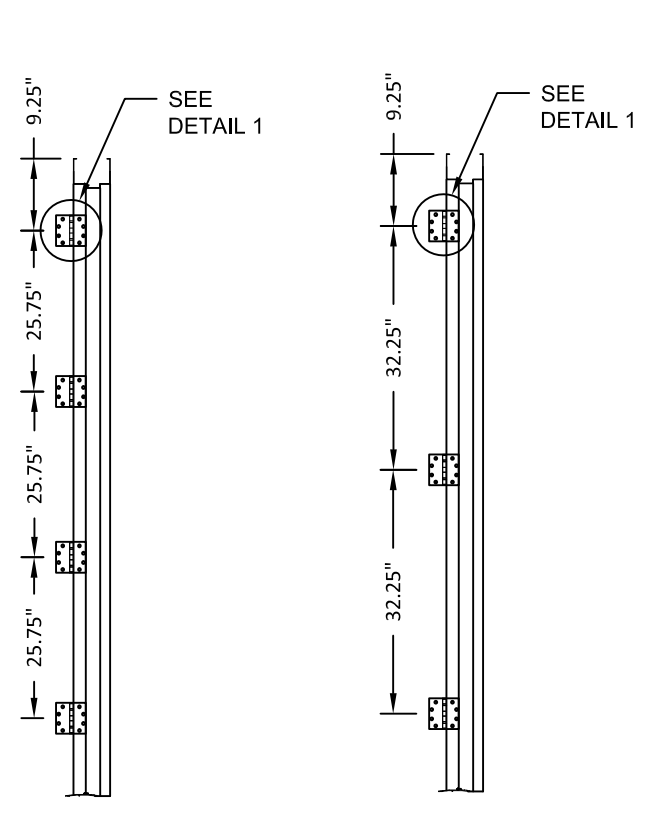
SCALE: **NTS**

DWG. #: **MDI003**

SHEET:

9

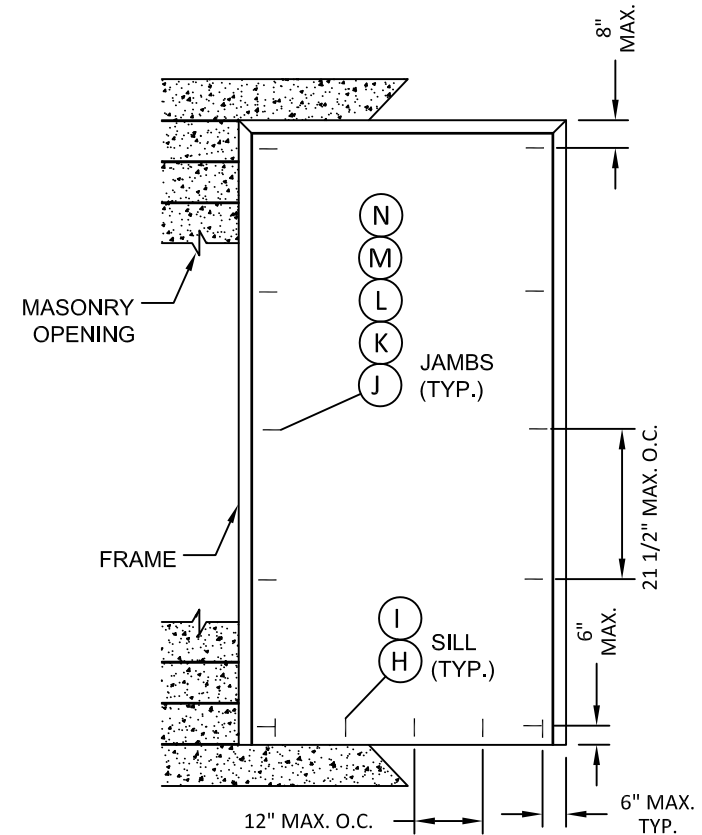
OF 14



DETAIL 1

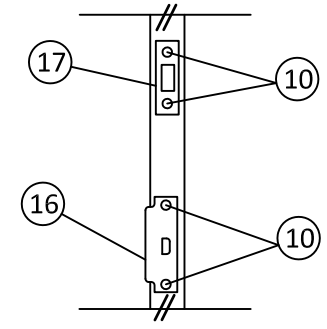
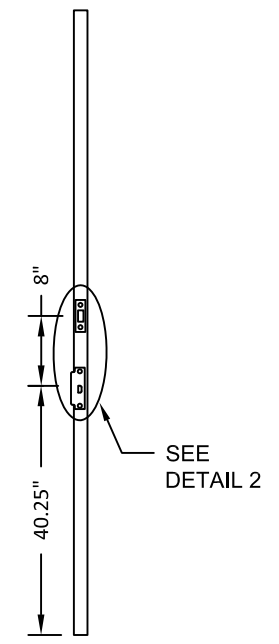
HINGE JAMB
4 HINGE OPTION
100" MAX. FRAME HEIGHT

HINGE JAMB
3 HINGE OPTION
90" MAX. FRAME HEIGHT

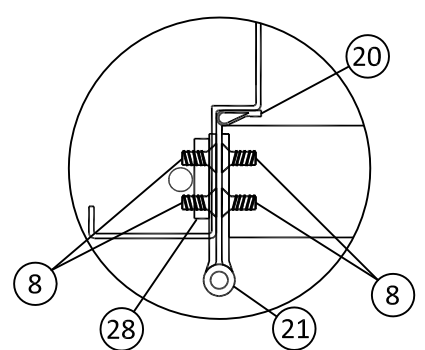


FRAME ANCHORING
CONCRETE/MASONRY

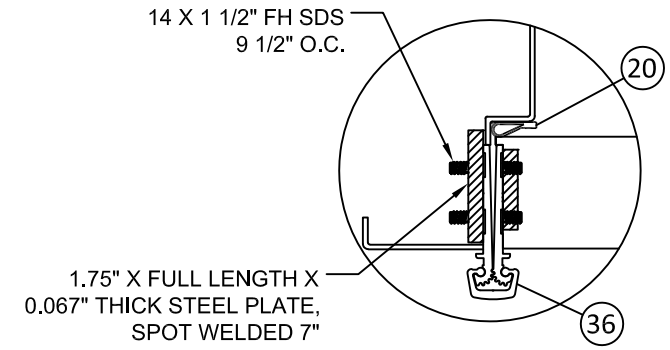
STRIKE JAMB



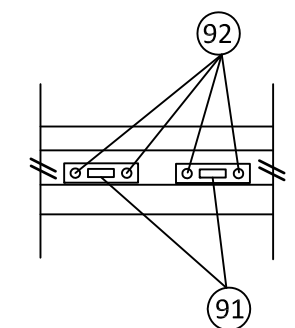
DETAIL 2



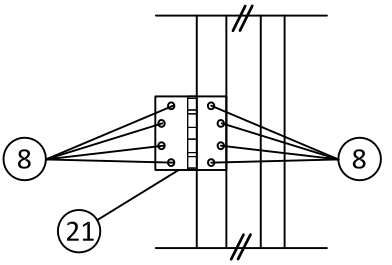
HINGE OPTION 1
BB5 BALL BEARING HINGE



HINGE OPTION 2
CONTINUOUS GEARED HINGE



DETAIL 3



ANCHOR NOTES:

1. SUBSTITUTION OF EQUAL CONCRETE SCREWS FROM A DIFFERENT SUPPLIER MAY HAVE DIFFERENT EDGE DISTANCE AND CENTER DISTANCE REQUIREMENTS. MIN. EDGE DISTANCES SHOWN IN DETAILS ARE FOR DYNALBOLT SLEEVE ANCHORS. ADJUST MIN. CLEARANCES FOR TAPPER CONCRETE SCREWS AS NECESSARY.
2. CONCRETE SCREW LOCATIONS AT THE CENTERS MAY BE ADJUSTED TO MAINTAIN THE MINIMUM EDGE DISTANCE TO MORTAR JOINTS. IF CONCRETE SCREW LOCATIONS NOTED AS "MAX. ON CENTER" MUST BE ADJUSTED TO MAINTAIN MINIMUM EDGE DISTANCE TO MORTAR JOINTS, ADDITIONAL CONCRETE SCREWS MAY BE REQUIRED TO ENSURE THE MAXIMUM ON CENTER DIMENSION IS NOT EXCEEDED.

4/18/2023 2:47 PM s:\projects\mesker mbm, llc\fb-23-0112 - fbc submittal - commercial steel doors revisions\dwg\15539\mdi003.dwg

TITLE: "N" SERIES COMMERCIAL
OUTSWING STEEL DOOR
(HVHZ) (IMPACT)

ANCHORING DETAILS

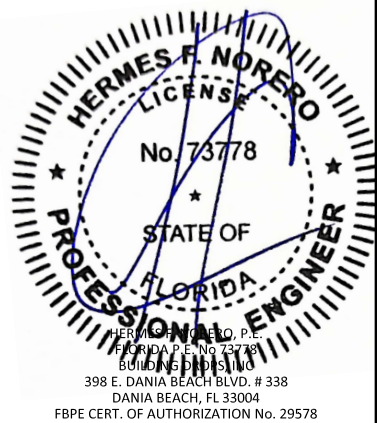
PREPARED BY: BUILDING DROPS, INC.

398 E. DANIA BEACH BLVD., STE. 338
DANIA BEACH, FL 33004
PH: (954) 399-8478
FAX: (954) 744-4738
WEB: www.buildingdrops.com

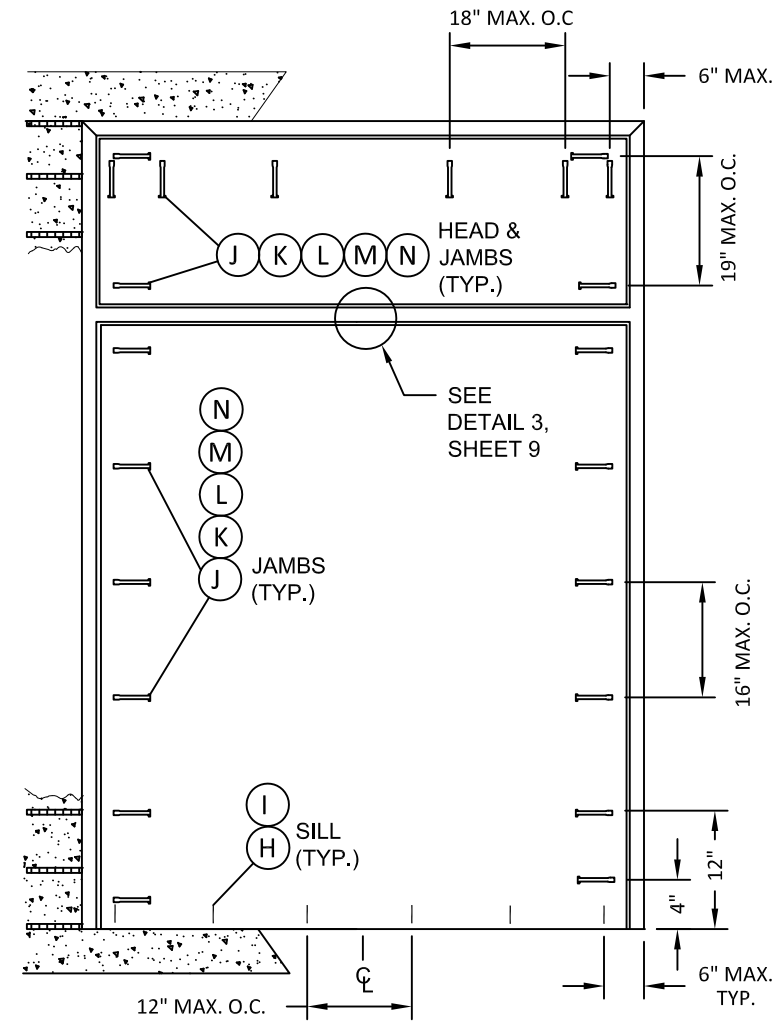


REMARKS	BY	DATE
2020 FBC UPDATE	NUS	07/23/20
2023 NAME CHANGE	MG	03/06/23

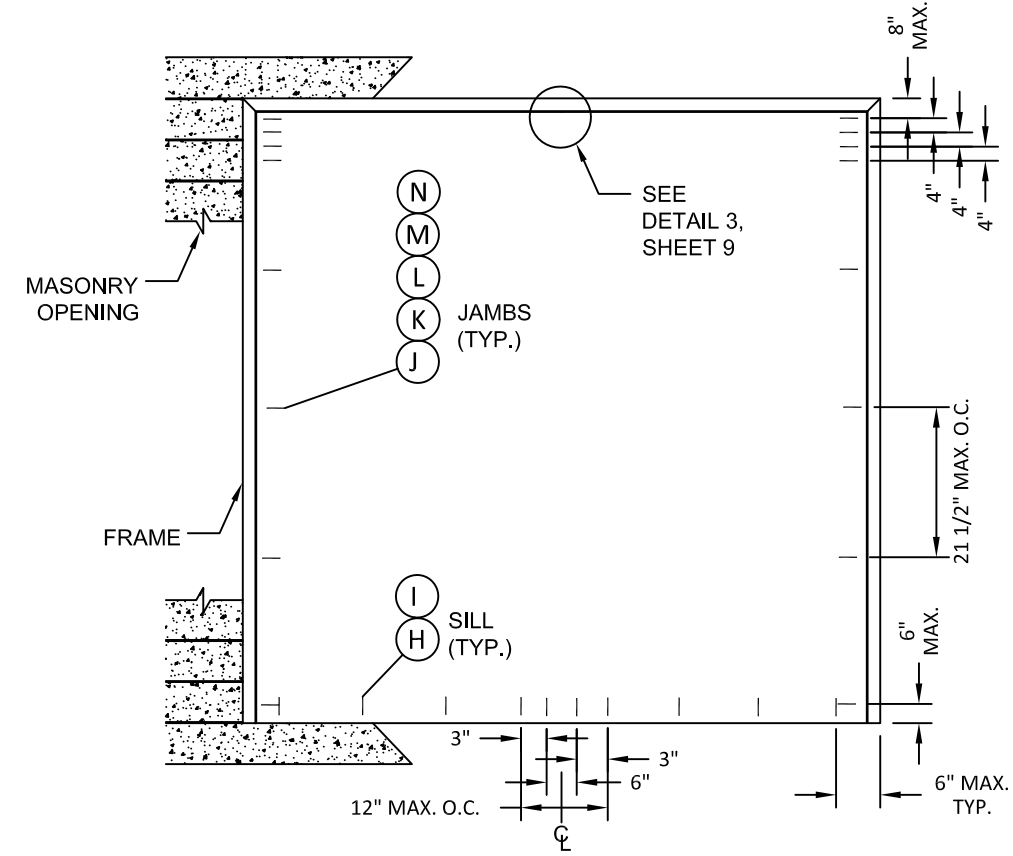
THE INSTALLATION DETAILS DESCRIBED HEREIN ARE GENERIC AND MAY NOT REFLECT ACTUAL CONDITIONS FOR A SPECIFIC SITE. IF SITE CONDITIONS CAUSE INSTALLATION TO DEVIATE FROM THE REQUIREMENTS DETAILED HEREIN, A LICENSED ENGINEER OR ARCHITECT SHALL PREPARE SITE SPECIFIC DOCUMENTS FOR USE WITH THIS DOCUMENT.



FL #:	FL15539
DATE:	06.03.16
DWG. BY:	LS
CHK. BY:	HFN
SCALE:	NTS
DWG. #:	MDI003
SHEET:	10



FRAME ANCHORING
CONCRETE/MASONRY



FRAME ANCHORING
CONCRETE/MASONRY

4/18/2023 2:47 PM s:\projects\mesker mbm, llc\fb\fb-23-0112 - fbc submittal - commercial steel doors revisions\dwg\115539\mdi003.dwg

TITLE: "N" SERIES COMMERCIAL
OUTSWING STEEL DOOR
(HVHZ) (IMPACT)

ANCHORING DETAILS

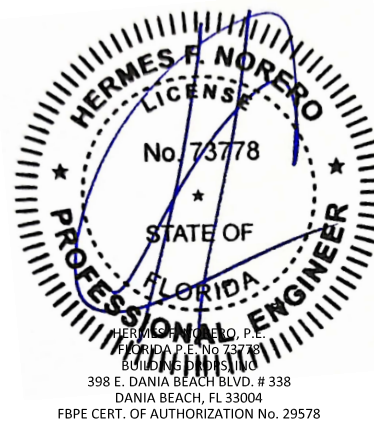
PREPARED BY: BUILDING DROPS, INC.



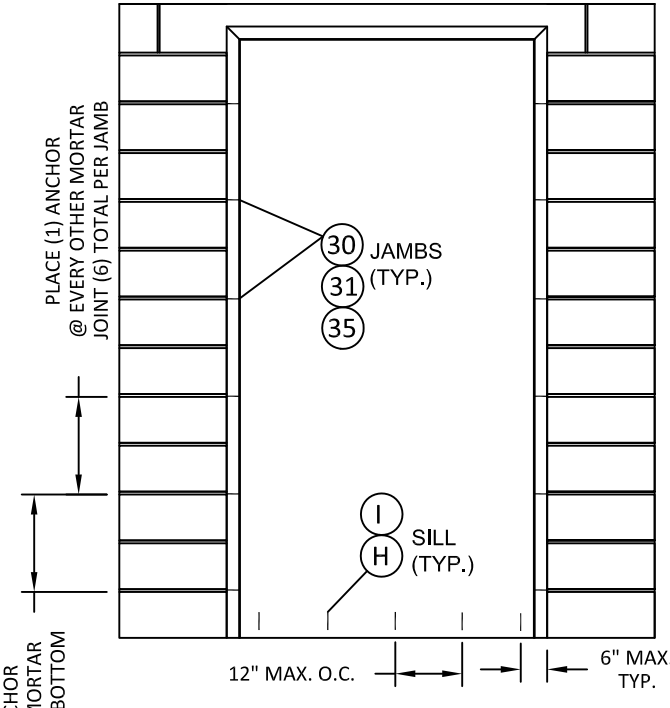
398 E. DANIA BEACH BLVD., STE. 338
DANIA BEACH, FL 33004
PH: (954) 399-8478
FAX: (954) 744-4738
WEB: www.buildingdrops.com

REMARKS	BY	DATE
2020 FBC UPDATE	NUS	07/23/20
2023 NAME CHANGE	MG	03/06/23

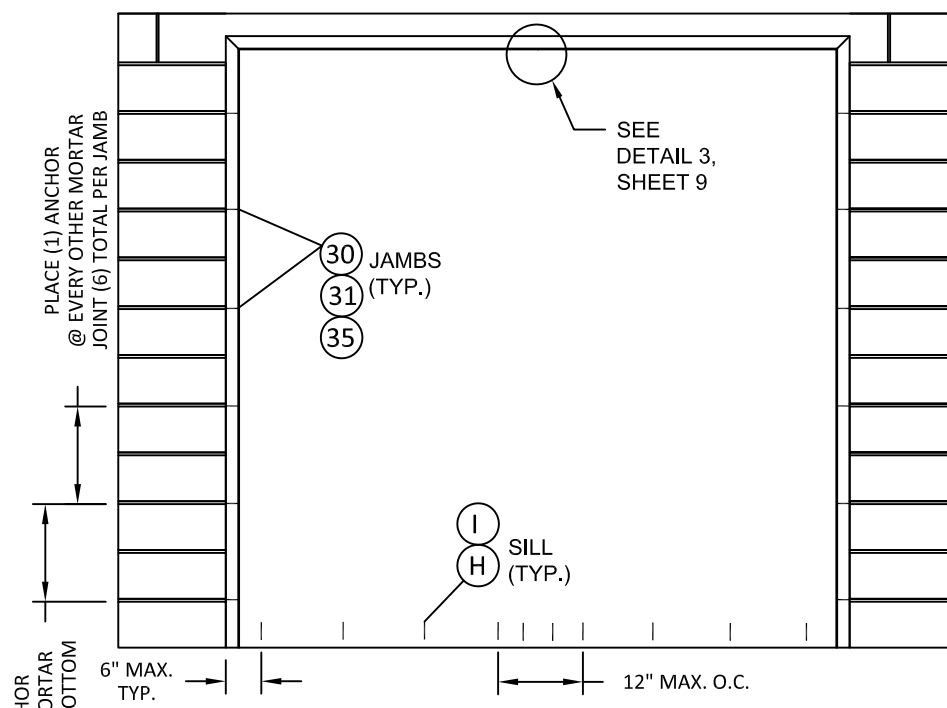
THE INSTALLATION DETAILS DESCRIBED HEREIN ARE GENERIC AND MAY NOT REFLECT ACTUAL CONDITIONS FOR A SPECIFIC SITE. IF SITE CONDITIONS CAUSE INSTALLATION TO DEVIATE FROM THE REQUIREMENTS DETAILED HEREIN, A LICENSED ENGINEER OR ARCHITECT SHALL PREPARE SITE SPECIFIC DOCUMENTS FOR USE WITH THIS DOCUMENT.



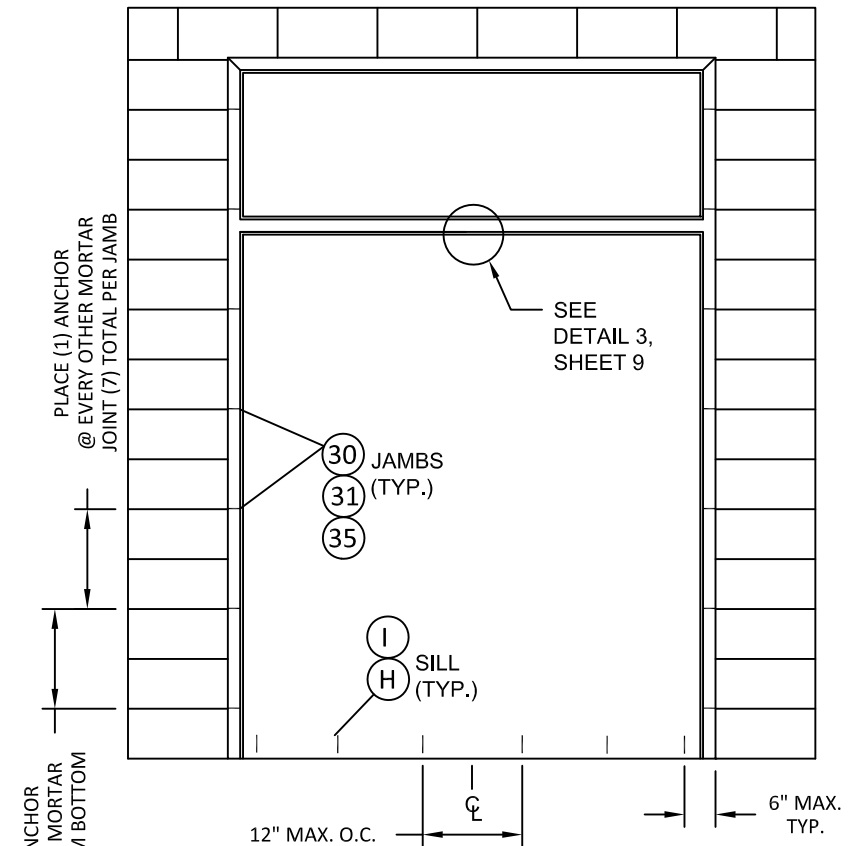
FL #:	FL15539
DATE:	06.03.16
DWG. BY:	LS
CHK. BY:	HFN
SCALE:	NTS
DWG. #:	MDI003
SHEET:	11



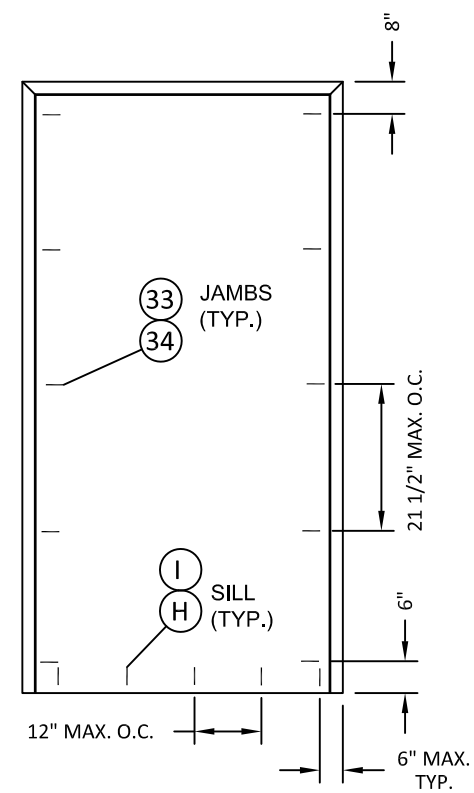
FRAME ANCHORING
T STRAP & WIRE ANCHOR



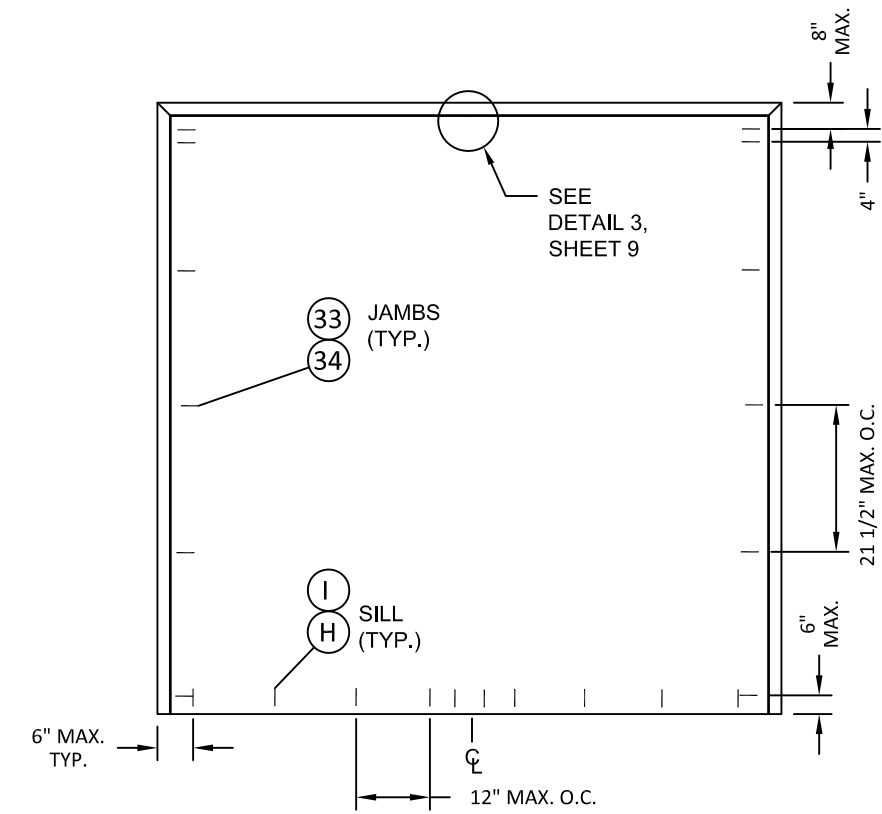
FRAME ANCHORING
T STRAP & WIRE ANCHOR



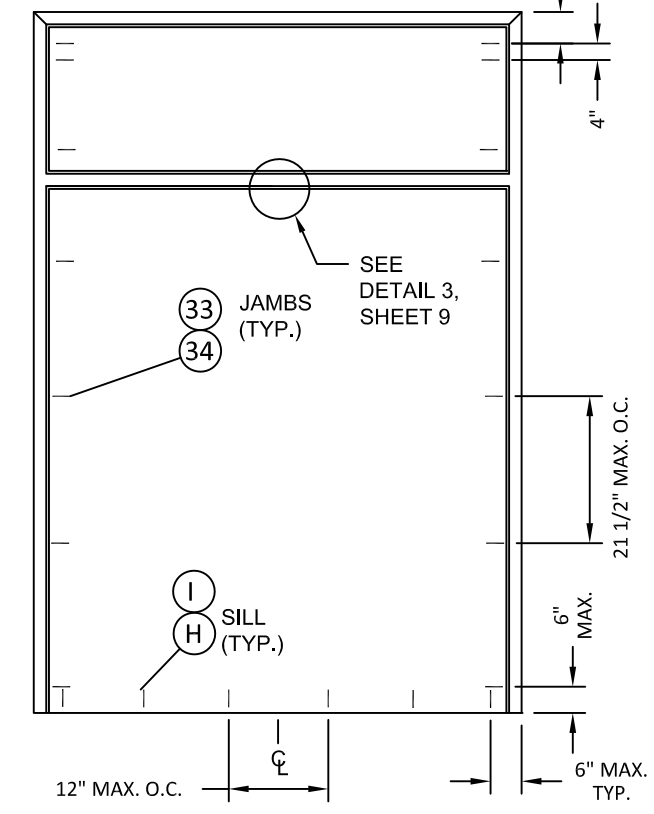
FRAME ANCHORING
T STRAP & WIRE ANCHOR



FRAME ANCHORING
Z ANCHOR & WOOD STUD ANCHOR



FRAME ANCHORING
Z ANCHOR & WOOD STUD ANCHOR



FRAME ANCHORING
Z ANCHOR & WOOD STUD ANCHOR

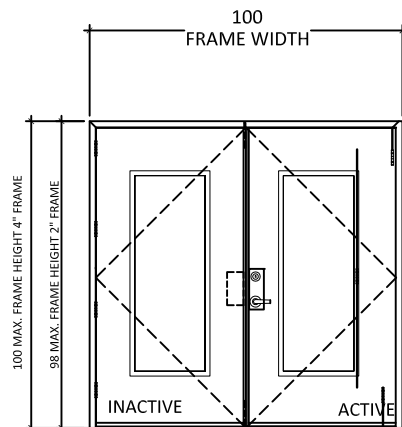
4/18/2023 2:47 PM

s:\projects\mesker mbm, llc\fb\23-0112 - fbc submittal - commercial steel doors revisions\dwg\115539\mdi003.dwg

HARDWARE/LOCK OPTIONS

ACTIVE DOOR HARDWARE CAN APPLY TO SINGLE DOORS
(EXTERIOR ELEVATIONS - OUTSWING DOORS)

OPTION 1



OPTION 1.A (+/- 65 PSF, 100" X 100")

ACTIVE LEAF:

DESIGN HARDWARE M SERIES EXTRA HEAVY DUTY (GRADE 1) MORTISE LOCK WITH (2) 8-32 X 1 1/8" FH MS, LATCH = SS 3/4" THROW, DEADBOLT = SS 1" THROW

INACTIVE LEAF:

DESIGN HARDWARE UL-MFB-M FLUSH BOLTS WITH (4) 8 X 3/4" FH MULTI THREAD SCREWS, TOP AND BOTTOM, FLUSH MOUNT METALLIC FLUSH BOLT GUIDE WITH (2) #8 X 3/4" FH THREAD SCREWS, FLUSH MOUNT METALLIC STRIKE PLATE, WITH (2) 1/4" X 3/8" FH MS

OPTION 1.B (+/- 60 PSF, 40" X 88")

ACTIVE LEAF:

ONITY 86E SERIES EXTRA HEAVY DUTY (GRADE 1) MORTISE LOCK WITH (2) #12-24 X 1" COMBINATION MS, LATCH = SS 3/4" THROW, DEADBOLT = SS 1" THROW

OPTION 2

OPTION 2.A (+/- 65 PSF, 100" X 100")

ACTIVE LEAF:

DESIGN HARDWARE X OR Z SERIES (GRADE 1) CYLINDRICAL LOCK, WITH (2) #8 X 3/4" FH THREAD SCREWS AND (2) #10 X 1 9/16" FH MS. LATCH = SS 1/2" THROW

INACTIVE LEAF:

DESIGN HARDWARE UL-MFB-M FLUSH BOLTS, FLUSH MOUNT METALLIC FLUSH BOLT GUIDE, SURFACE MOUNT METALLIC STRIKE PLATE, WITH (4) 8 X 3/4" FH MULTI THREAD SCREWS, TOP AND BOTTOM

OPTION 2.B (+/- 65 PSF, 52" X 100")

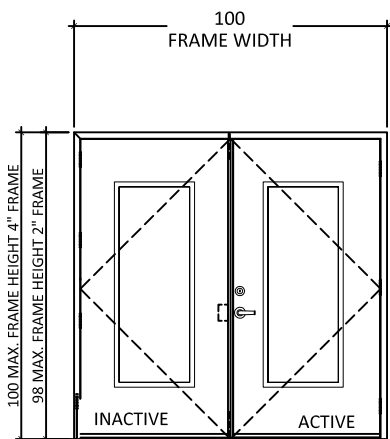
ACTIVE LEAF:

DESIGN HARDWARE X OR Z SERIES (GRADE 1) CYLINDRICAL LOCK, WITH (2) #8 X 3/4" FH THREAD SCREWS AND (2) #10 X 1 9/16" FH MS. LATCH = SS 1/2" THROW, WITH DEADBOLT D-1S OR D2-S.

OPTION 2.C (+/- 55 PSF, 40" X 88")

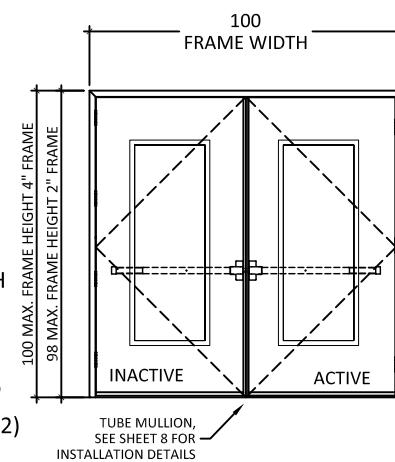
ACTIVE LEAF:

SCHLAGE 161 (GRADE 1) CYLINDRICAL LOCK, WITH (2) #8 X 3/4" FH THREAD SCREWS AND (2) #10 X 1 9/16" FH MS. LATCH = SS 1/2" THROW



NOTE:

CONTINUOUS HINGE OR BB5 HINGE ACCEPTABLE ON ALL OPTIONS. FOR PANEL HINGE OPTIONS, SEE SHEET 9.



OPTION 3

OPTION 3.A (+/- 65 PSF, 100" X 100")

ACTIVE LEAF/INACTIVE LEAF:

DESIGN HARDWARE 2000 SERIES STANDARD DUTY SURFACE MOUNT METALLIC RIM PANIC DEVICE WITH (6) 14 X 1 1/2" FH SDS, RIM PANIC LATCH AT LOCKS = 5/8" THROW. ROLLER STRIKE WITH 5/8" PROJECTION & 1/8" SHIM.

WITH 2" X 3" X 1/8" THICK STEEL VERTICAL TUBE MULLION, FY = 36 KSI MIN.

OPTION 3.B (+/- 65 PSF, 100" X 100")

ACTIVE LEAF/INACTIVE LEAF:

DESIGN HARDWARE 1000 SERIES HEAVY DUTY SURFACE MOUNT METALLIC PANIC DEVICE WITH (5) 14 X 1 1/2" FH SDS, ROLLER STRIKE WITH 5/8" PROJECTION & 1/8" SHIM.

WITH 2" X 3" X 1/8" THICK STEEL VERTICAL TUBE MULLION, FY = 36 KSI MIN.

OPTION 3.C (+/- 55 PSF, 52" X 88")

ACTIVE LEAF:

VON DUPRIN 99 SERIES STANDARD DUTY SURFACE MOUNT METALLIC RIM PANIC DEVICE WITH (6) 14 X 1 1/2" FH SDS, RIM PANIC LATCH AT LOCKS = 5/8" THROW.

ROLLER STRIKE WITH 5/8" PROJECTION & 1/8" SHIM.

WITH 2" X 3" X 1/8" THICK STEEL VERTICAL TUBE MULLION, FY = 36 KSI MIN.

OPTION 4

OPTION 4.A (+/- 65 PSF, 100" X 100")

ACTIVE LEAF/INACTIVE LEAF:

DESIGN HARDWARE 2000 SERIES STANDARD DUTY SURFACE MOUNT METALLIC PANIC DEVICE WITH DESIGN KIL TRIM, WITH (4) 14 X 1 1/2" FH SDS, HANDLE WITH (2) #8-36 X 1 1/2" PH MS.

WITH 2" X 3" X 1/8" THICK STEEL VERTICAL TUBE MULLION, FY = 36 KSI MIN.

OPTION 4.B (+/- 65 PSF, 100" X 100")

ACTIVE LEAF/INACTIVE LEAF:

DESIGN HARDWARE 1000 SERIES HEAVY DUTY SURFACE MOUNT METALLIC PANIC DEVICE WITH DESIGN KIL TRIM WITH (5) 14 X 1 1/2" FH SDS, HANDLE WITH (2) #8-36 X 1 1/2" PH MS.

WITH 2" X 3" X 1/8" THICK STEEL VERTICAL TUBE MULLION, FY = 36 KSI MIN.

OPTION 4.C (+/- 55 PSF, 52" X 88")

ACTIVE LEAF:

VON DUPRIN 99 SERIES STANDARD DUTY SURFACE MOUNT METALLIC RIM PANIC DEVICE WITH DESIGN KIL TRIM, WITH (4) 14 X 1 1/2" FH SDS, HANDLE WITH (2) #8-36 X 1 1/2" PH MS. WITH

2" X 3" X 1/8" THICK STEEL VERTICAL TUBE MULLION, FY = 36 KSI MIN.

OPTION 5

OPTION 5.A (+/- 65 PSF, 100" X 100")

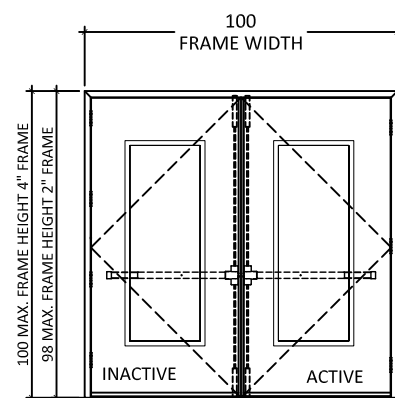
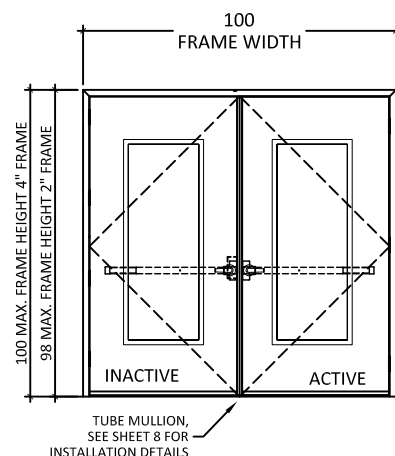
ACTIVE LEAF/INACTIVE LEAF:

DESIGN HARDWARE 2000 SERIES STANDARD DUTY (GRADE 1) SVR SURFACE MOUNT METALLIC 2 POINT LOCK SYSTEM WITH PANIC DEVICE AND VERTICAL RODS ON EXTERIOR WITH (6) 14"-20 X 3/4 PH SMS AND (6) 14-20 X 3/4" FH MS. TOP STRIKE WITH (3) 1/4"-20P X 3/4" FH MS.

OPTION 5.B (+/- 65 PSF, 100" X 100")

ACTIVE LEAF/INACTIVE LEAF:

DESIGN HARDWARE 1000 SERIES HEAVY DUTY (GRADE 1) SVR SURFACE MOUNT METALLIC PANIC DEVICE WITH (2) 14-20" PH MS AND (4) 14 X 1/4" FH SMS, VERTICAL ROD AT TOP AND BOTTOM (2) 14 X 1 1/2" FH SDS. TOP STRIKE WITH (3) 1/4"-20P X 3/4" FH MS.



MESKER MBM, LLC
3440 Standwood Blvd.
Huntsville, AL 35811
PH: (256) 851-6670

TITLE: "N" SERIES COMMERCIAL OUTSWING STEEL DOOR (HVHZ) (IMPACT)

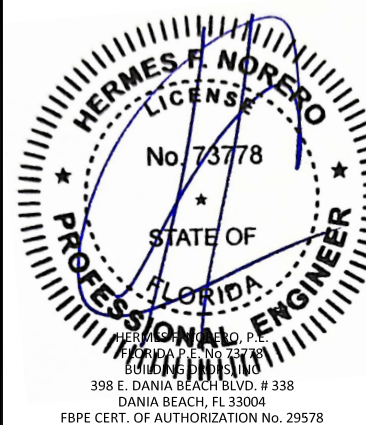
HARDWARE & LOCK OPTIONS

PREPARED BY: BUILDING DROPS, INC.

398 E. DANIA BEACH BLVD., STE. 338
DANIA BEACH, FL 33004
PH: (954) 399-8478
FAX: (954) 744-4738
WEB: www.buildingdrops.com

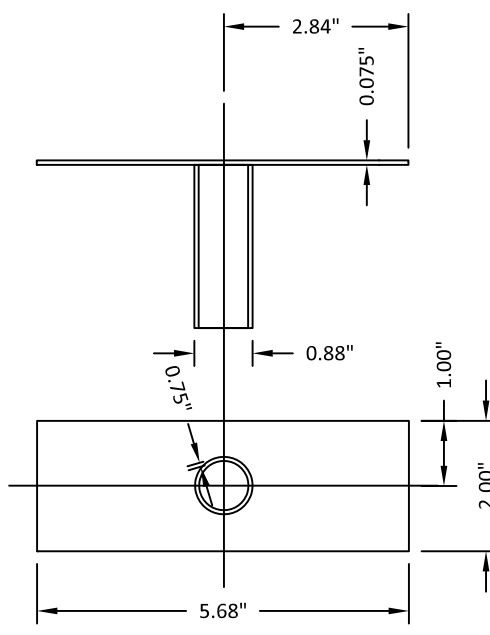
REMARKS	BY	DATE
2020 FBC UPDATE	NUS	07/23/20
2023 NAME CHANGE	MG	03/06/23

THE INSTALLATION DETAILS DESCRIBED HEREIN ARE GENERIC AND MAY NOT REFLECT ACTUAL CONDITIONS FOR A SPECIFIC SITE. IF SITE CONDITIONS CAUSE INSTALLATION TO DEVIATE FROM THE REQUIREMENTS DETAILED HEREIN, A LICENSED ENGINEER OR ARCHITECT SHALL PREPARE SITE SPECIFIC DOCUMENTS FOR USE WITH THIS DOCUMENT.

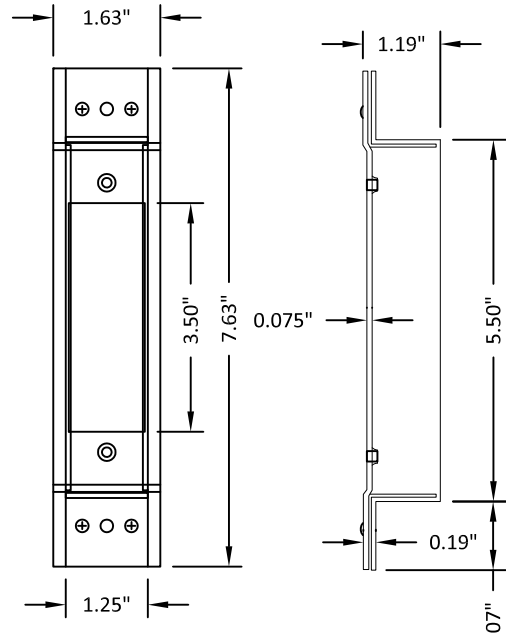


FL #:	FL15539	
DATE:	06.03.16	
DWG. BY:	LS	CHK. BY: HFN
SCALE:	NTS	
DWG. #:	MDI003	
SHEET:	12 OF 14	

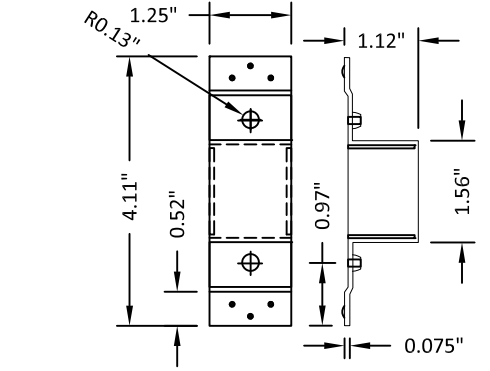
4/18/2023 2:47 PM



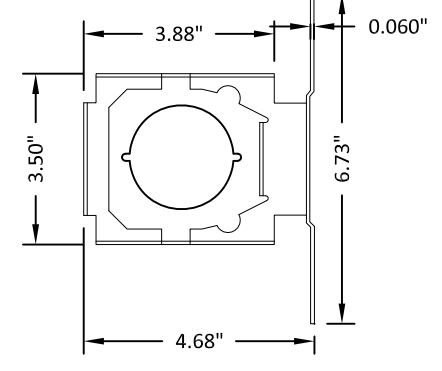
9 TUBE ANCHOR



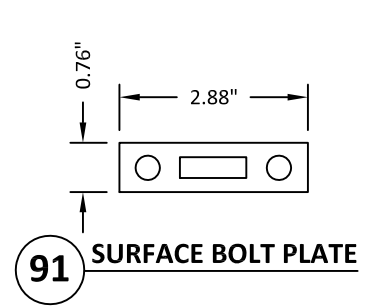
27 LATCH STRIKE REINFORCEMENT



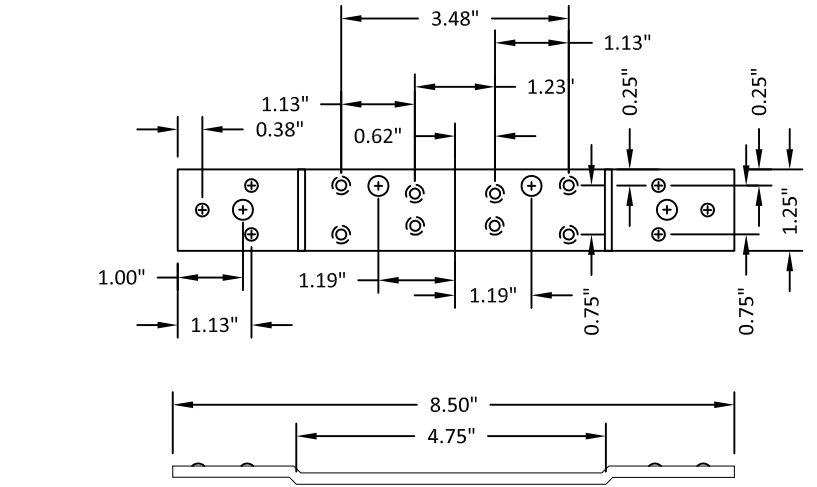
19 DEADBOLT STRIKE REINFORCEMENT



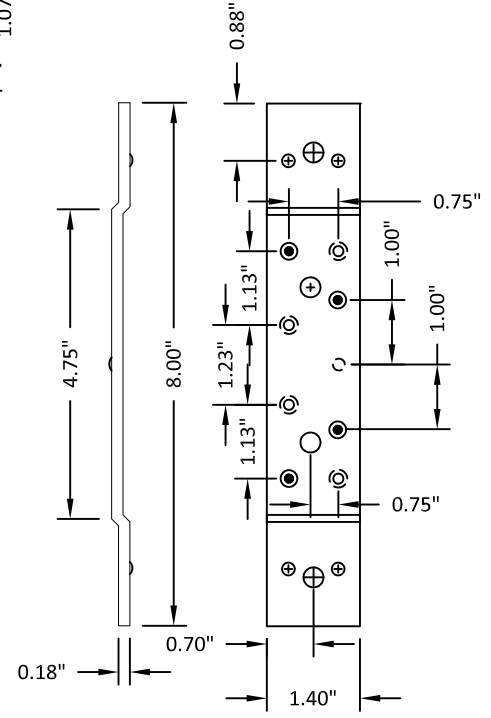
5 LOCK BOX REINFORCEMENT



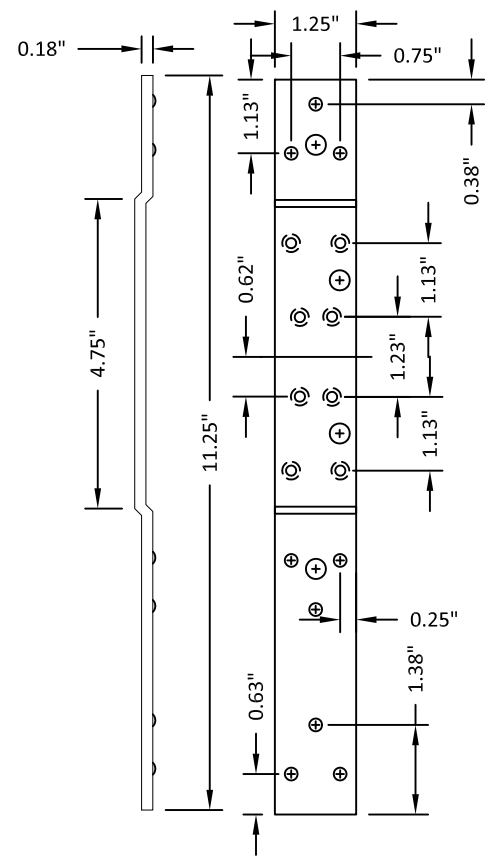
91 SURFACE BOLT PLATE



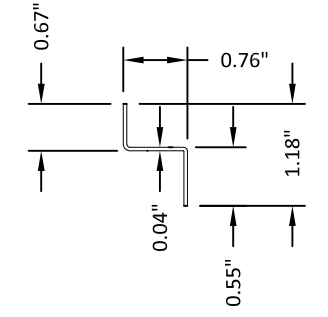
28 FRAME HINGE REINFORCEMENT



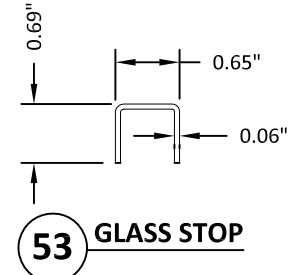
23 STANDARD (SHORT) DOOR HINGE
Reinforcement middle and bottom hinge



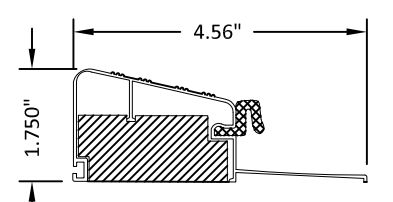
22 STANDARD (LONG) DOOR HINGE
Reinforcement top hinge



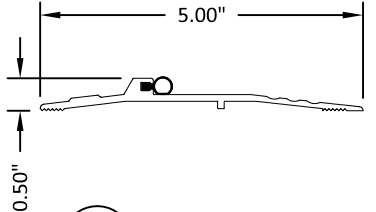
12 MULLION Z BRACKET



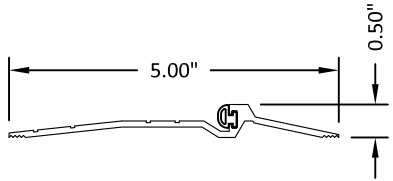
53 GLASS STOP



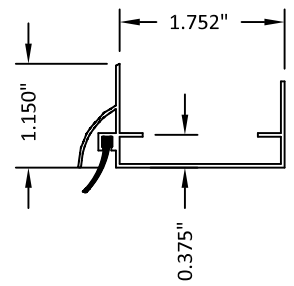
78 OUTSWING THRESHOLD
QOSH BY DLP



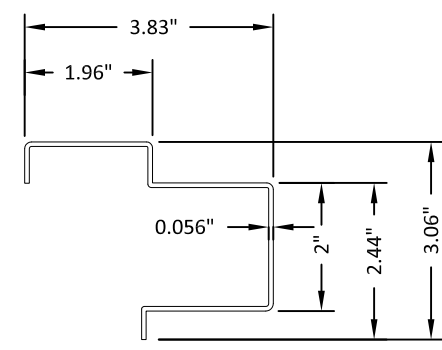
40 THRESHOLD
NGP #896V



41 THRESHOLD
PEMKO 2005_V



45 DOOR SWEEP



15 MULLION



MESKER MBM, LLC
3440 Standwood Blvd.
Huntsville, AL 35811
PH: (256) 851-6670

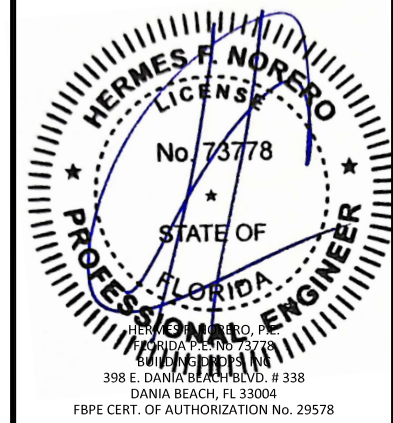
TITLE: "N" SERIES COMMERCIAL
OUTSWING STEEL DOOR
(HVHZ) (IMPACT)
COMPONENTS

PREPARED BY: BUILDING DROPS, INC.
398 E. DANIA BEACH BLVD., STE. 338
DANIA BEACH, FL 33004
PH: (954)399-8478
FAX: (954)744-4738
WEB: www.buildingdrops.com



REMARKS	BY	DATE
2020 FBC UPDATE	NUS	07/23/20
2023 NAME CHANGE	MG	03/06/23

THE INSTALLATION DETAILS DESCRIBED HEREIN ARE GENERIC AND MAY NOT REFLECT ACTUAL CONDITIONS FOR A SPECIFIC SITE. IF SITE CONDITIONS CAUSE INSTALLATION TO DEVIATE FROM THE REQUIREMENTS DETAILED HEREIN, A LICENSED ENGINEER OR ARCHITECT SHALL PREPARE SITE SPECIFIC DOCUMENTS FOR USE WITH THIS DOCUMENT.



HERMES F. NORERO, P.E.
FLORIDA P.E. NO. 73778
BUILDING DROPS, INC.
398 E. DANIA BEACH BLVD. # 338
DANIA BEACH, FL 33004
FBPE CERT. OF AUTHORIZATION No. 29578

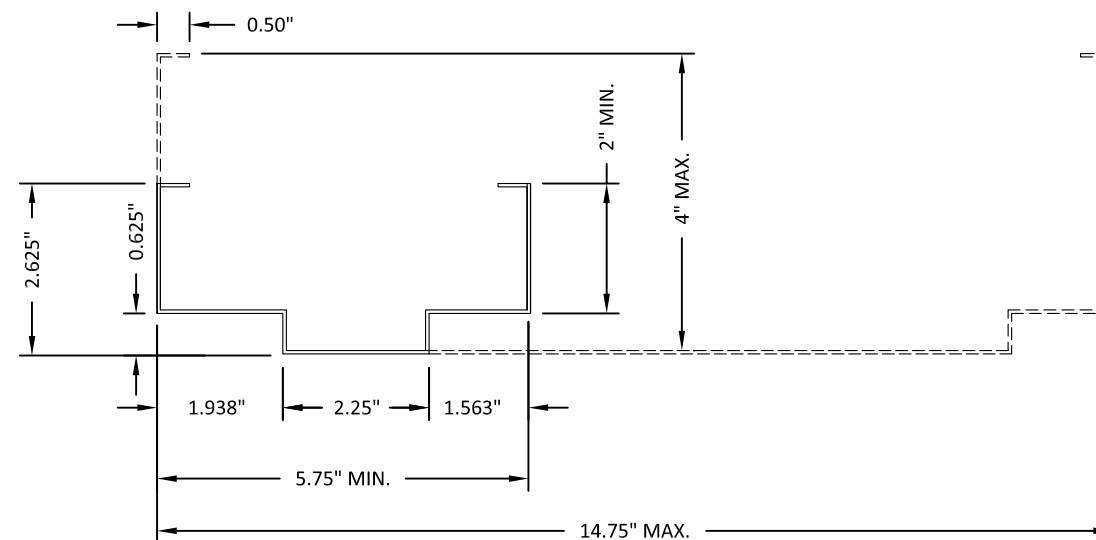
FL #:	FL15539
DATE:	06.03.16
DWG. BY:	LS
CHK. BY:	HFN
SCALE:	NTS
DWG. #:	MDI003
SHEET:	13

s:\projects\mesker.mbm, llc\fbc-23-0112 - fbc submittal - commercial steel doors revisions\dwg\fl15539\mdi003.dwg

BILL OF MATERIALS

ITEM #	DESCRIPTION	MATERIAL
C	1/4" MAX. SHIM SPACE	-
D	1/4" X 2-3/4" ELCO OR ITW CONCRETE SCREWS	STEEL
E	MASONRY - 3000 PSI MIN. CONCRETE CONFORMING TO ACI 301 OR HOLLOW BLOCK CONFORMING TO ASTM C90	CONCRETE
H	1/4" X 1-3/4" ITW PFH CONCRETE SCREW	STEEL
I	5/16" X 1-3/4" ELCO ULTRACON CONCRETE SCREW	STEEL
J	3/8" X 5" PFH ITW DYNABOLT SLEEVE ANCHOR	STEEL
K	3/8" X 5" HLC HILTI SLEEVE ANCHOR	STEEL
L	3/8" X 5" SLEEVE ANCHOR BY POWERS FASTENERS	STEEL
M	3/8" X 5" TAPPER CONCRETE SCREW BY POWERS FASTENERS	STEEL
N	5/16" SMS OR MACHINE BOLT (MIN. GRADE 5 CRS)	STEEL
O	3/8" X 5" WEDGE BOLT CONCRETE SCREW BY POWERS FASTENERS	STEEL
1	"N" STEEL DOOR PANEL	-
2	DOOR SKIN - BY MESKER	STEEL
3	FOAM 1.0 PCF MIN. DENSITY	POLYSTYRENE
4	DOOR TOP & BOTTOM CLOSER	STEEL
5	LOCK BOX REINFORCEMENT	STEEL
8	#12-24 X 1/2" SELF TAPPER	STEEL
9	TUBE ANCHOR (PF-10)	STEEL
10	#12-24 X 1" COMBINATION MACHINE / WOOD SCREW	STEEL
12	MULLION Z BRACKET	STEEL
15	MULLION MIN. (0.056" THK) BY MESKER	STEEL
16	ANSI LATCH STRIKE	STEEL
17	DEADBOLT STRIKE	STEEL
19	DEADBOLT STRIKE REINFORCEMENT	STEEL
20	WEATHERSTRIP (PEMKO S-88)	NEOPRENE
21	4-1/2" X 4-1/2" X 0.125" TEMPLATE HINGE	STEEL
22	STANDARD (LONG) DOOR HINGE TOP HINGE REINFORCEMENT	STEEL
23	STANDARD (SHORT) DOOR HINGE MIDDLE BOTTOM HINGE REINF.	STEEL
24	WEATHERSTRIP (THRESHOLD)	NEOPRENE
25	HOLLOW METAL FRAME - BY MESKER	STEEL
27	LATCH STRIKE REINFORCEMENT	STEEL
28	FRAME HINGE REINFORCEMENT	STEEL
30	MASONRY 'TEE' ANCHOR (MESKER PFMT5)	STEEL
31	STRAP ANCHOR (PS-241)	STEEL
33	Z ANCHOR (PF-9)	STEEL
34	WOOD STUD ANCHOR (F-24)	STEEL
35	WIRE ANCHOR (PF-2)	STEEL
36	CONTINUOUS GEARED HINGE	ALUMINUM

ITEM #	DESCRIPTION	MATERIAL
40	THRESHOLD (NATIONAL GUARD PRODUCTS, INC. #896V)	ALUMINUM
41	THRESHOLD (PEMKO 2005_V)	ALUMINUM
45	95WHA DOOR SWEEP NATIONAL GUARD PRODUCTS, INC.	ALUMINUM
46	#6 X 3/4" PHILIPS HEAD SMS	STEEL
51	L CHANNEL FIXED GLASS STOP	STEEL
52	#8 X 0.5" HH SELF DRILLING SCREW	STEEL
53	U CHANNEL FIXED GLASS STOP	STEEL
54	#8 X 0.125" PFH SHEET METAL SCREW	STEEL
71	DESIGN HARDWARE D1-S SERIES DEADBOLT	STEEL
72	DESIGN HARDWARE "Z" SERIES ENTRY	STEEL
76	DESIGN HARDWARE D2-S SERIES DEADBOLT	STEEL
77	DESIGN HARDWARE "X" SERIES ENTRY	STEEL
78	OUTSWING THRESHOLD QOSH BY DLP	ALUM / WOOD
79	WEATHERSTRIP	FOAM
81	DOW 995 STRUCTURAL SILICONE	SILICONE
83	1/4" X 2-1/2" PPH MS	STEEL
86	LITE FRAME BY AIR LOUVERS VLFEZ-HRC	STEEL
86A	LITE FRAME BY AIR LOUVERS VLFIG-HRC	STEEL
88	#8 X 1-1/2" PPH MS	STEEL
89	SCREW COVER	STEEL
92	#8 X 1-1/4" PPH SELF TAPPER	STEEL
93	KRM REMOVABLE MULLION	STEEL



25 HOLLOW METAL FRAME



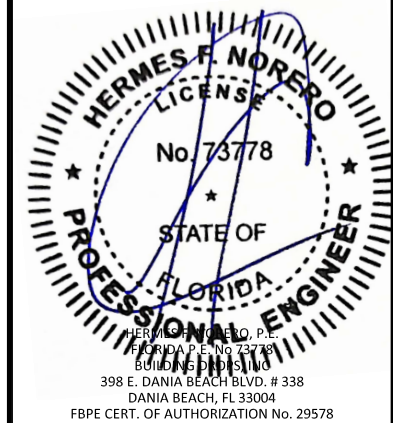
MESKER MBM, LLC
3440 Standwood Blvd.
Huntsville, AL 35811
PH: (256) 851-6670

TITLE: "N" SERIES COMMERCIAL OUTSWING STEEL DOOR (HVHZ) (IMPACT)
BILL OF MATERIALS

PREPARED BY: BUILDING DROPS, INC.
398 E. DANIA BEACH BLVD., STE. 338
DANIA BEACH, FL 33004
PH: (954) 399-8478
FAX: (954) 744-4738
WEB: www.buildingdrops.com

REMARKS	BY	DATE
2020 FBC UPDATE	NUS	07/23/20
2023 NAME CHANGE	MG	03/06/23

THE INSTALLATION DETAILS DESCRIBED HEREIN ARE GENERIC AND MAY NOT REFLECT ACTUAL CONDITIONS FOR A SPECIFIC SITE. IF SITE CONDITIONS CAUSE INSTALLATION TO DEVIATE FROM THE REQUIREMENTS DETAILED HEREIN, A LICENSED ENGINEER OR ARCHITECT SHALL PREPARE SITE SPECIFIC DOCUMENTS FOR USE WITH THIS DOCUMENT.



FL #:
FL15539

DATE: **06.03.16**

DWG. BY: **LS** CHK. BY: **HFN**

SCALE: **NTS**

DWG. #: **MDI003**

SHEET:
14
OF 14

4/18/2023 2:47 PM

s:\projects\mesker mbm, llc\fb-23-0112 - fbc submittal - commercial steel doors revisions\dwg\15539\mdi003.dwg