

# MESKER MBM, LLC.

## "N" SERIES COMMERCIAL OUTSWING STEEL DOOR TRANSOMS AND SIDELITES (HVHZ) (IMPACT)



MESKER MBM, LLC  
3440 Standwood Blvd.  
Huntsville, AL 35811  
PH: (256) 851-6670

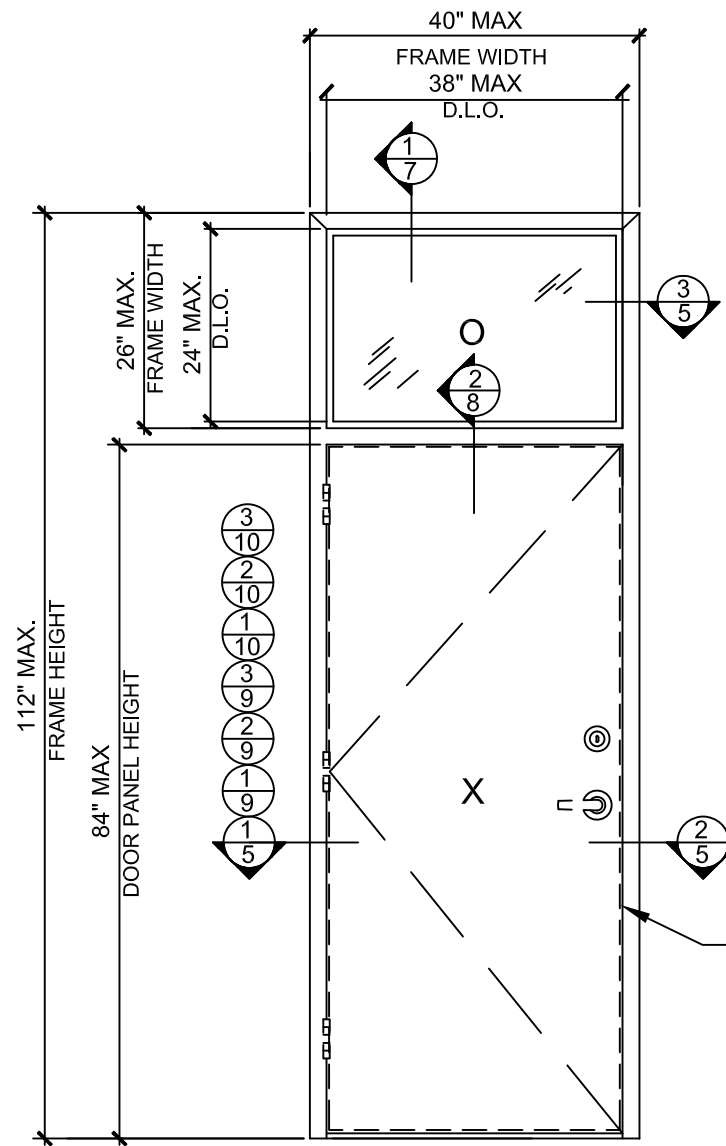
TITLE: "N" SERIES COMMERCIAL OUTSWING STEEL DOOR TRANSOMS AND SIDELITES (HVHZ) (IMPACT)  
EVALUATION, DESIGN PRESSURE & GENERAL NOTES  
PREPARED BY: BUILDING DROPS, INC.  
398 E. DANIA BEACH BLVD., STE. 338  
DANIA BEACH, FL 33004  
PH: (954) 399-8478  
FAX: (954) 744-4738  
WEB: www.buildingdrops.com



### GENERAL NOTES:

- THIS PRODUCT HAS BEEN DESIGNED AND EVALUATED TO COMPLY WITH THE REQUIREMENTS OF THE CURRENT FLORIDA BUILDING CODE: AAMA 501-15, ASTM E1886-13a, ASTM E1996-17, ASTM E330-14, TAS 201-94, TAS 202-94, TAS 203-94, INCLUDING HIGH VELOCITY HURRICANE ZONE (HVHZ).
- RATED FOR LARGE MISSILE IMPACT (9LB, 50 FPS) AND DOES NOT REQUIRE SHUTTERS.
- ANCHORS SHALL BE AS LISTED, SPACED AS SHOWN ON ELEVATIONS / DETAILS. ANCHOR EMBEDMENT TO BASE MATERIAL SHALL BE BEYOND WALL DRESSING OR STUCCO.
- ANCHORING OR LOADING CONDITIONS NOT SHOWN IN THESE DETAILS ARE NOT PART OF THIS APPROVAL.
- MATERIALS INCLUDING BUT NOT LIMITED TO STEEL/METAL SCREWS THAT COME INTO CONTACT WITH OTHER DISSIMILAR MATERIALS SHALL MEET THE REQUIREMENTS.
- METAL STRUCTURES NOT BY MESKER INC. MUST SUPPORT LOADS IMPOSED BY DOOR SYSTEM AND TRANSFER THEM TO THE BUILDING STRUCTURE.
- FRAME: MIN. 16 GA. (0.053"THK.) STEEL MIN.  $F_y = 42$  KSI MIN.

NOTE:  
EGRESS REQUIREMENTS TO BE REVIEWED BY BUILDING OFFICIAL.



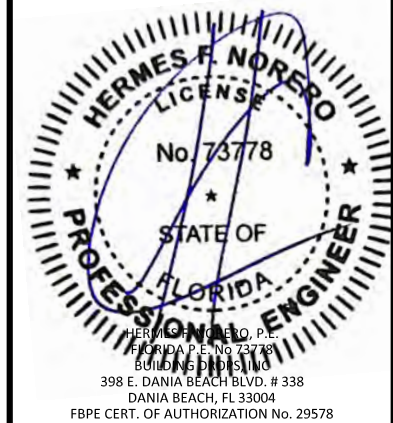
DOOR UNDER SEPARATE APPROVAL:  
LOUVER - FL#15493  
GLAZED - FL#15539  
OPAQUE - FL#15542

SINGLE DOOR TYP. ELEVATION

OVERALL FRAME SIZE		TRANSOM D.L.O		DESIGN PRESSURE (PSF)	
WIDTH	HEIGHT	WIDTH	HEIGHT	POSITIVE	NEGATIVE
40.00"	112.00"	38.00"	24.00"	+65.0	-65.0

TABLE OF CONTENTS	
SHEET	SHEET DESCRIPTION
1	TYPICAL ELEVATIONS, DESIGN PRESSURES, & GENERAL NOTES
2	TYPICAL ELEVATIONS & DESIGN PRESSURES
3	TYPICAL ELEVATIONS & DESIGN PRESSURES
4	TYPICAL ELEVATIONS & DESIGN PRESSURES
5	HORIZONTAL CROSS SECTIONS
6	HORIZONTAL CROSS SECTIONS
7	VERTICAL CROSS SECTION
8	VERTICAL CROSS SECTION
9	HORIZONTAL CROSS SECTIONS
10	HORIZONTAL CROSS SECTIONS
11	ANCHORING DETAILS
12	ANCHORING DETAILS
13	ANCHORING DETAILS
14	ANCHORING DETAILS
15	COMPONENTS
16	BILL OF MATERIALS & COMPONENTS

THE INSTALLATION DETAILS DESCRIBED HEREIN ARE GENERIC AND MAY NOT REFLECT ACTUAL CONDITIONS FOR A SPECIFIC SITE. IF SITE CONDITIONS CAUSE INSTALLATION TO DEVIATE FROM THE REQUIREMENTS DETAILED HEREIN, A LICENSED ENGINEER OR ARCHITECT SHALL PREPARE SITE SPECIFIC DOCUMENTS FOR USE WITH THIS DOCUMENT.



FL #:  
**FL15544**

DATE: 06/03/16

DWG. BY: LS      CHK. BY: HFN

SCALE: NTS

DWG. #: MDI002

SHEET:  
**1**  
OF 16

s:\projects\mesker mbm, llc\fb-23-0112 - fbc submittal - commercial steel doors revisions\dwg\15544\md002.dwg 4/24/2023 11:53 AM



MESKER MBM, LLC  
3440 Standwood Blvd.  
Huntsville, AL 35811  
PH: (256) 851-6670

TITLE:  
"N" SERIES COMMERCIAL OUTSWING  
STEEL DOOR TRAMSOMS AND SIDELITES  
(HVHZ) (IMPACT)

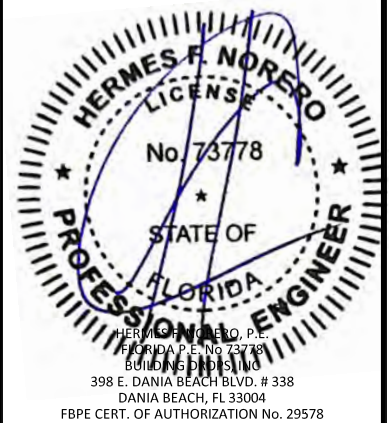
ELEVATION & DESIGN PRESSURE

PREPARED BY:  
**BUILDING DROPS, INC.**  
398 E. DANIA BEACH BLVD., STE. 338  
DANIA BEACH, FL 33004  
PH: (954)399-8478  
FAX: (954)744-4738  
WEB: www.buildingdrops.com



REMARKS	BY	DATE
2020 FBC UPDATE	NUS	08/13/20
2023 NAME CHANGE	MG	03/06/23

THE INSTALLATION DETAILS DESCRIBED HEREIN ARE GENERIC AND MAY NOT REFLECT ACTUAL CONDITIONS FOR A SPECIFIC SITE. IF SITE CONDITIONS CAUSE INSTALLATION TO DEVIATE FROM THE REQUIREMENTS DETAILED HEREIN, A LICENSED ENGINEER OR ARCHITECT SHALL PREPARE SITE SPECIFIC DOCUMENTS FOR USE WITH THIS DOCUMENT.



FL #:  
**FL15544**

DATE: **06/03/16**

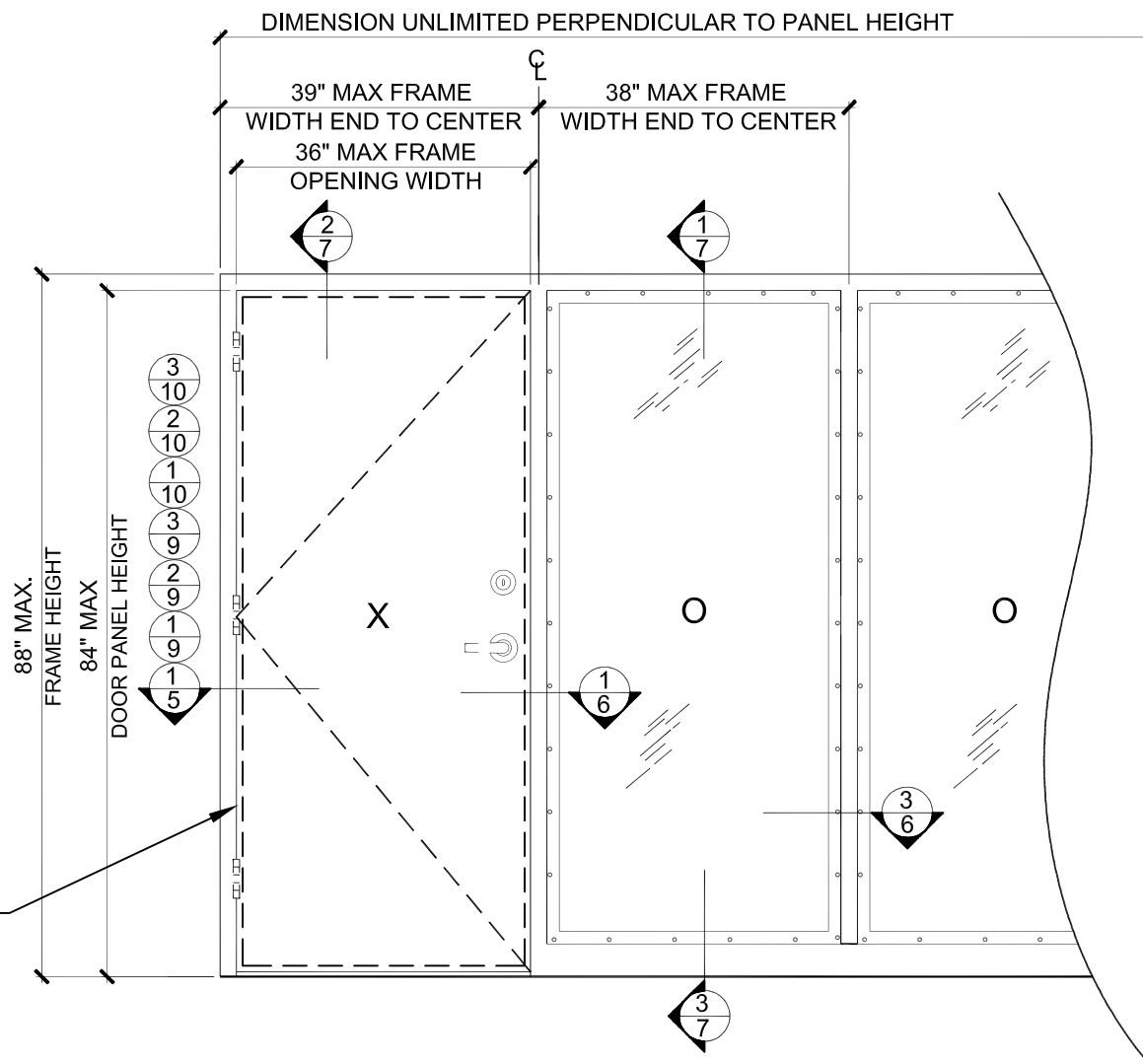
DWG. BY: **LS**      CHK. BY: **HFN**

SCALE: **NTS**

DWG. #: **MDI002**

SHEET:  
**2**  
OF 16

"N" SERIES COMMERCIAL OUTSWING STEEL DOOR W / SIDELITE (LMI)



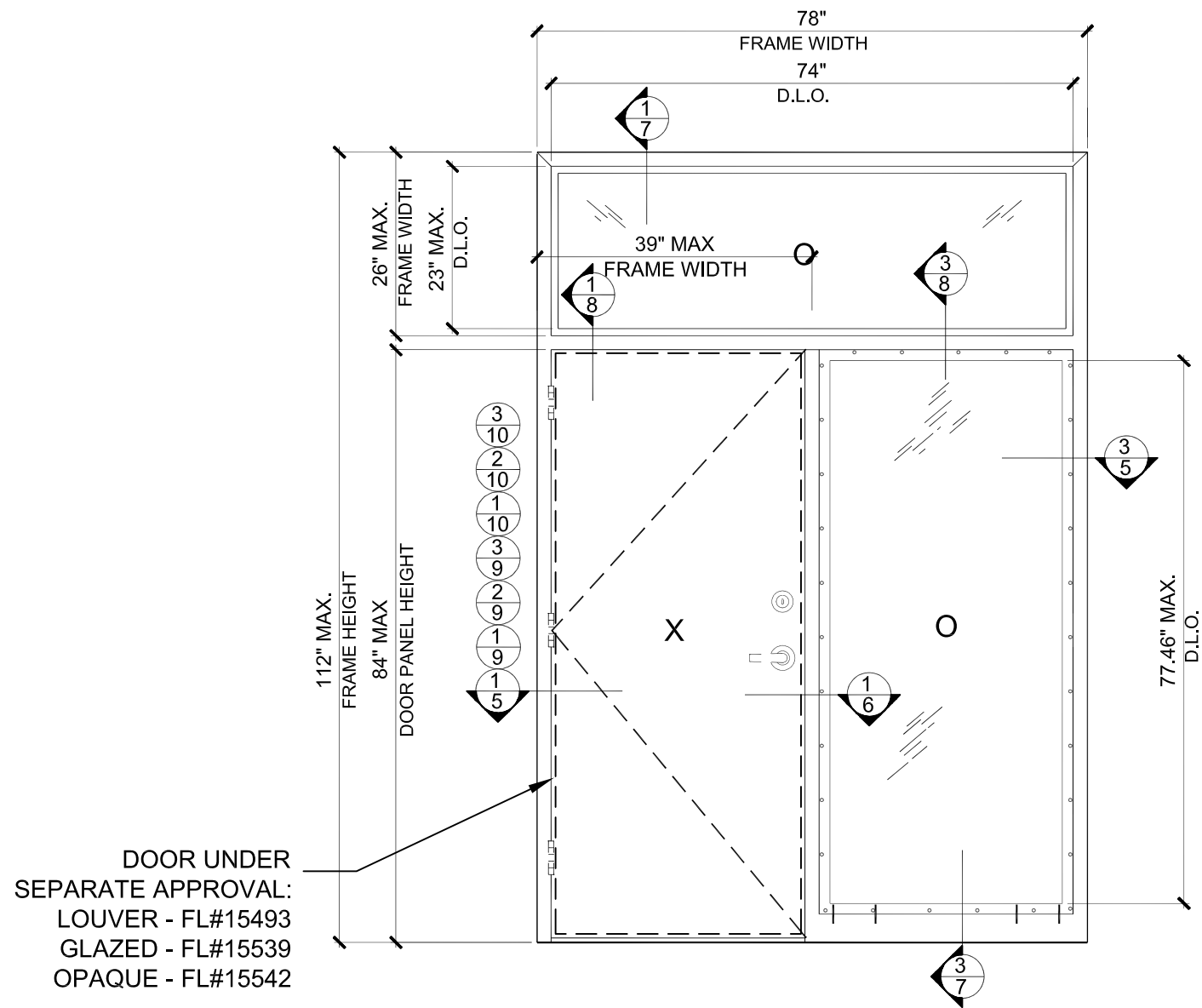
"N" WITH SIDELITE

OVERALL DOOR SIZE		SIDELITE D.L.O		DESIGN PRESSURE (PSF)	
WIDTH	HEIGHT	WIDTH	HEIGHT	POSITIVE	NEGATIVE
39.00"	88.00"	34.75"	78.75"	+65.0	-65.0

DOOR UNDER SEPARATE APPROVAL:  
LOUVER - FL#15493  
GLAZED - FL#15539  
OPAQUE - FL#15542

4/24/2023 11:53 AM  
s:\projects\mesker mbm, llc\fb\23-0112 - fbc submittal - commercial steel doors revisions\dwg\115544\mdi002.dwg

"N" SERIES COMMERCIAL OUTSWING STEEL DOOR W/TRANSOM & SIDELITE(LMI)



"N" SIDELITE & TRANSOM

OVERALL FRAME SIZE		SIDELITE D.L.O		TRANSOM D.L.O		DESIGN PRESSURE (PSF)	
WIDTH	HEIGHT	WIDTH	HEIGHT	WIDTH	HEIGHT	POSITIVE	NEGATIVE
78.00"	112.00"	34.75"	78.75"	74.00"	23.00"	+65.0	-65.0



MESKER MBM, LLC  
 3440 Standwood Blvd.  
 Huntsville, AL 35811  
 PH: (256) 851-6670

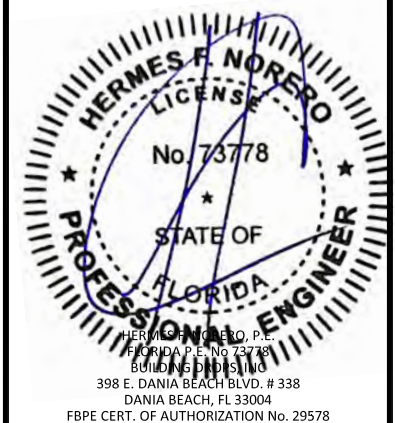
TITLE: "N" SERIES COMMERCIAL OUTSWING STEEL DOOR TRANSOMS AND SIDELITES (HVHZ) (IMPACT)  
 ELEVATION & DESIGN PRESSURE

PREPARED BY: BUILDING DROPS, INC.  
 398 E. DANIA BEACH BLVD., STE. 338  
 DANIA BEACH, FL 33004  
 PH: (954)399-8478  
 FAX: (954)744-4738  
 WEB: www.buildingdrops.com



REMARKS	BY	DATE
2020 FBC UPDATE	NUS	08/13/20
2023 NAME CHANGE	MG	03/06/23

THE INSTALLATION DETAILS DESCRIBED HEREIN ARE GENERIC AND MAY NOT REFLECT ACTUAL CONDITIONS FOR A SPECIFIC SITE. IF SITE CONDITIONS CAUSE INSTALLATION TO DEVIATE FROM THE REQUIREMENTS DETAILED HEREIN, A LICENSED ENGINEER OR ARCHITECT SHALL PREPARE SITE SPECIFIC DOCUMENTS FOR USE WITH THIS DOCUMENT.



FL #: **FL15544**

DATE: **06/03/16**

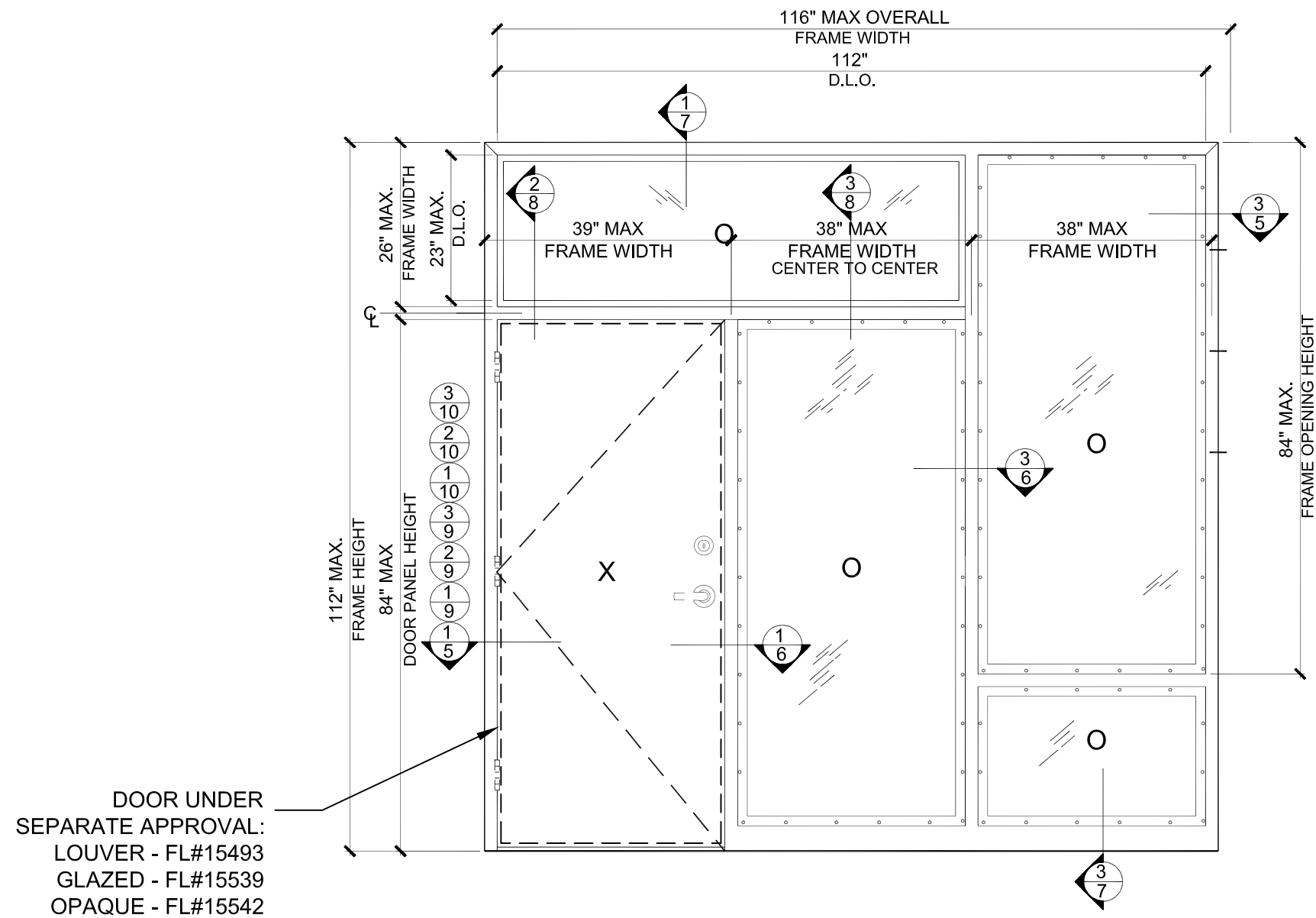
DWG. BY: **LS**      CHK. BY: **HFN**

SCALE: **NTS**

DWG. #: **MDI002**

SHEET: **3**

"N" SERIES COMMERCIAL OUTSWING STEEL DOOR W/TRANSOM & SIDELITE (LMI)



DOOR UNDER SEPARATE APPROVAL:  
 LOUVER - FL#15493  
 GLAZED - FL#15539  
 OPAQUE - FL#15542

"N" SIDELITE & TRANSOM

OVERALL FRAME SIZE		TRANSOM D.L.O		SIDELITE (REC) D.L.O		SIDELITE (SQU) D.L.O		DESIGN PRESSURE (PSF)	
WIDTH	HEIGHT	WIDTH	HEIGHT	WIDTH	HEIGHT	WIDTH	HEIGHT	POSITIVE	NEGATIVE
116.00"	112.00"	74.00"	23.00"	34.75"	78.75"	34.75"	34.75"	+65.0	-65.0



MESKER MBM, LLC  
 3440 Standwood Blvd.  
 Huntsville, AL 35811  
 PH: (256) 851-6670

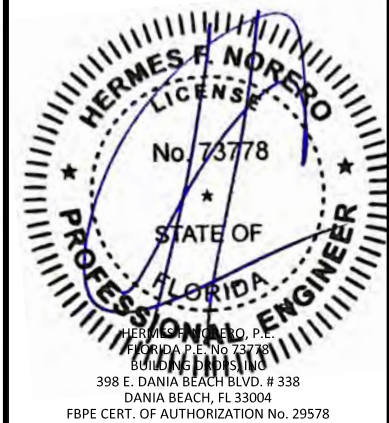
TITLE: "N" SERIES COMMERCIAL OUTSWING STEEL DOOR TRANSOMS AND SIDELITES (HVHZ) (IMPACT)  
 ELEVATION & DESIGN PRESSURE

PREPARED BY: BUILDING DROPS, INC.  
 398 E. DANIA BEACH BLVD., STE. 338  
 DANIA BEACH, FL 33004  
 PH: (954) 399-8478  
 FAX: (954) 744-4738  
 WEB: www.buildingdrops.com



REMARKS	BY	DATE
2020 FBC UPDATE	NUS	08/13/20
2023 NAME CHANGE	MG	03/06/23

THE INSTALLATION DETAILS DESCRIBED HEREIN ARE GENERIC AND MAY NOT REFLECT ACTUAL CONDITIONS FOR A SPECIFIC SITE. IF SITE CONDITIONS CAUSE INSTALLATION TO DEVIATE FROM THE REQUIREMENTS DETAILED HEREIN, A LICENSED ENGINEER OR ARCHITECT SHALL PREPARE SITE SPECIFIC DOCUMENTS FOR USE WITH THIS DOCUMENT.



FL #: **FL15544**

DATE: **06/03/16**

DWG. BY: **LS**      CHK. BY: **HFN**

SCALE: **NTS**

DWG. #: **MDI002**

SHEET: **4**

OF 16

4/24/2023 11:53 AM s:\projects\mesker mbm, llc\fb-23-0112 - fbc submittal - commercial steel doors revisions\dwg\115544\mdi002.dwg

**TYPICAL ANCHORS: (REFER TO ELEVATION FOR SPACING)**

**TYPE A** 3/8" DIA. DYNABOLT SLEEVE ANCHOR BY "ITW"  
 DIRECTLY INTO  $f_c=3000$  PSI CONCRETE, 1-1/2" MIN. EMBED  
 DIRECTLY INTO GROUT FILLED CONCRETE BLOCK, 1-1/2" MIN. EMBED  
 MIN. EDGE DIST 2-1/2"  
 MIN. SPACING 4-1/2"

**TYPE B** 3/8" POWER-BOLT BY "POWERS"  
 DIRECTLY INTO  $f_c=3000$  PSI CONCRETE, 2" MIN. EMBED  
 DIRECTLY INTO GROUT FILLED/HOLLOW CONCRETE BLOCK, 1-1/4" MIN. EMBED  
 MIN. EDGE DIST 3-3/4"  
 MIN. SPACING 4-1/2"

**TYPE C** 5/16" DIA. SMS OR MACHINE BOLTS (MIN. GRADE 5 CRS) OR ST/ST  
 STEEL :  $F_y = 36$  KSI MIN.  
 INTO METAL STRUCTURES (STEEL OR ALUMINUM 1/8" MIN. THICK.)  
 ALUMINUM : 6063-T6 MIN.  
 (STEEL IN CONTACT WITH ALUMINUM TO BE PLATED OR PAINTED)

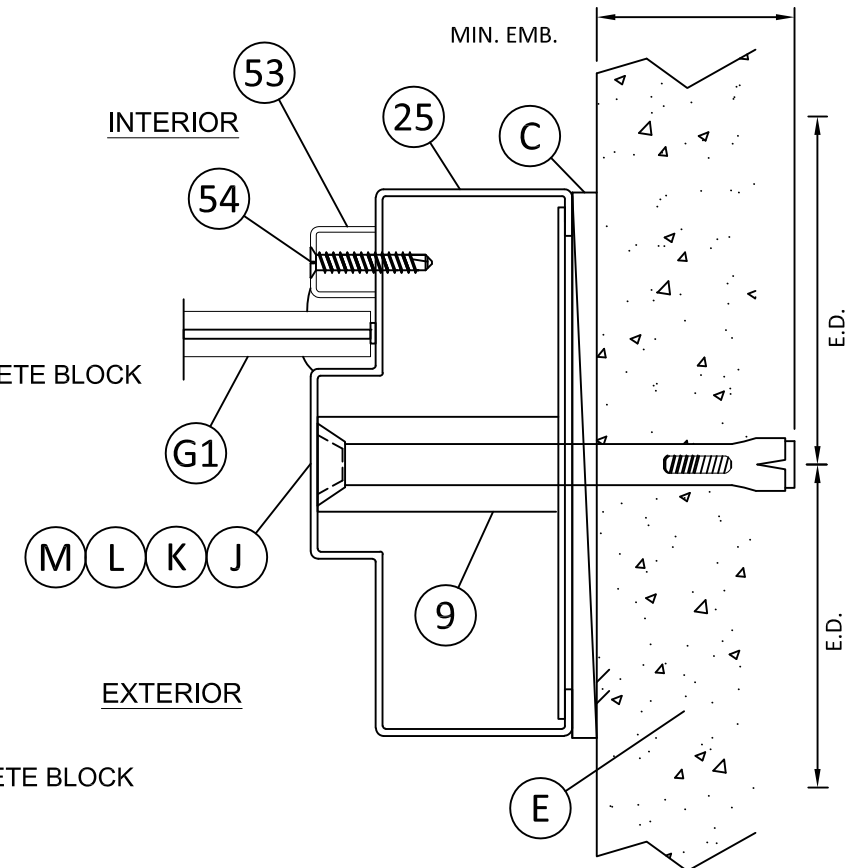
**SEALANT:**  
 ALL FRAME JOINTS AND CORNERS TO BE SEALED WITH SILICONE AT PERIMETER

**TYPE F** 3/8" DIA. HLC SLEEVE ANCHOR BY "HILTI"  
 DIRECTLY INTO  $f_c=3000$  PSI CONCRETE  
 MIN. EMBED. 1-3/8"  
 MIN. EDGE DIST 3-1/4"  
 MIN. SPACING 4-1/2"

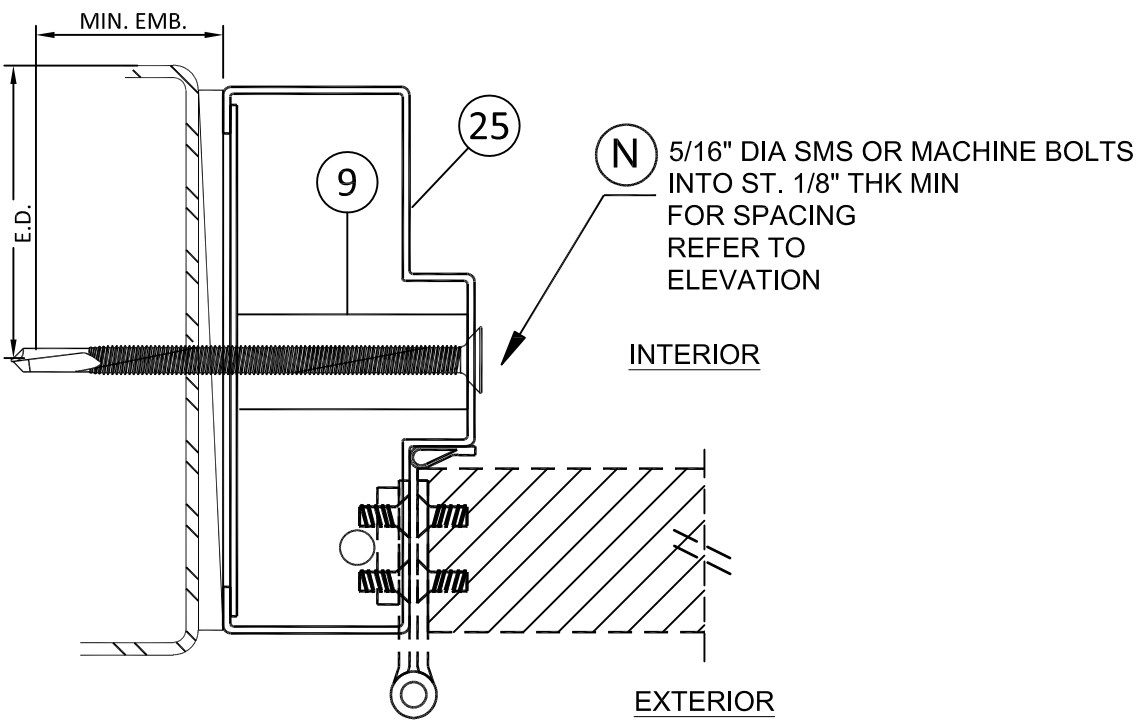
**TYPE F1** 3/8" DIA. HLC SLEEVE ANCHOR BY "HILTI"  
 DIRECTLY INTO GROUT FILLED/HOLLOW CONCRETE BLOCK  
 MIN. EMBED. 1-3/8"  
 MIN. EDGE DIST 3-1/2"  
 MIN. SPACING 4-1/2"

**TYPE G** 3/8" DIA. LOK BOLT BY "POWERS"  
 DIRECTLY INTO  $f_c=3000$  PSI CONCRETE  
 MIN. EMBED. 1-5/8"  
 MIN. EDGE DIST 3-3/4"  
 MIN. SPACING 4-1/2"

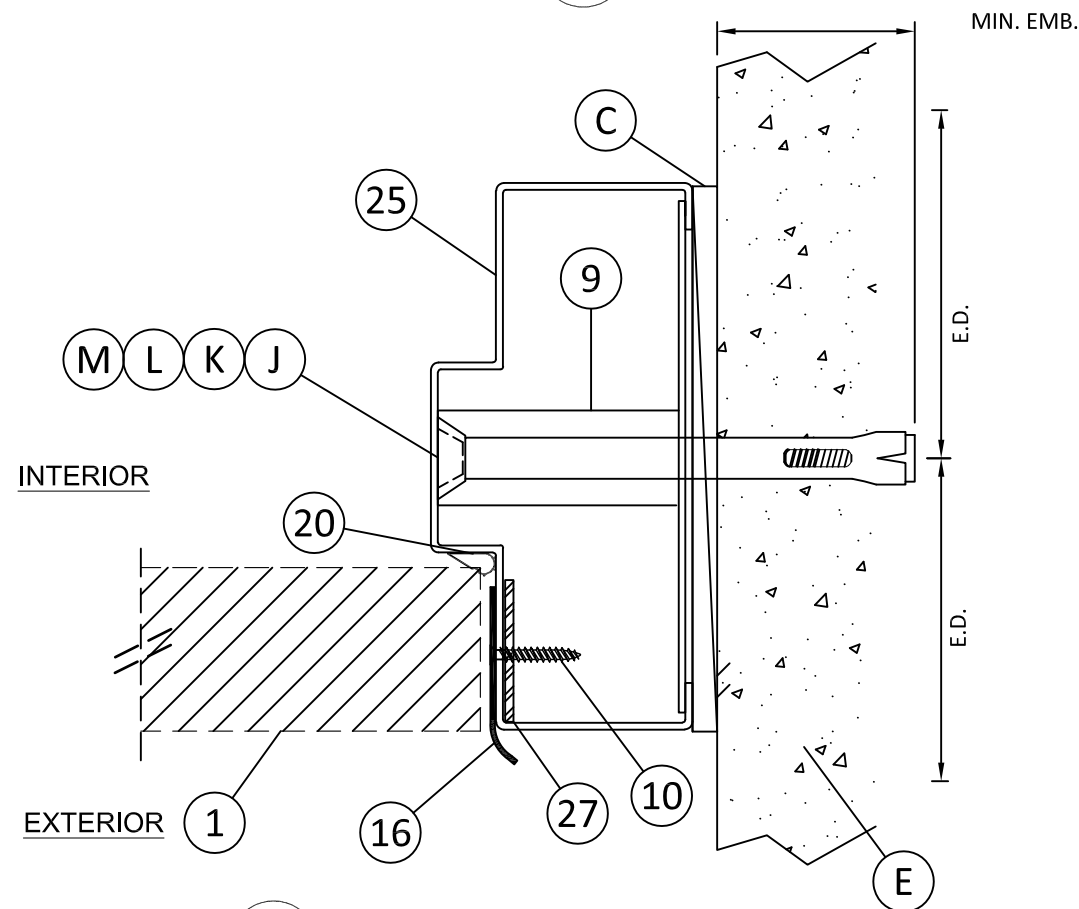
**TYPE G1** 3/8" DIA. LOK BOLT BY "POWERS"  
 DIRECTLY INTO GROUT FILLED/HOLLOW CONCRETE BLOCK  
 MIN. EMBED. 1-1/2"  
 MIN. EDGE DIST 3-3/4"  
 MIN. SPACING 4-1/2"



**3 HORIZONTAL CROSS SECTION**



**1 ANCHOR OPTION**



**2 HORIZONTAL CROSS SECTION**

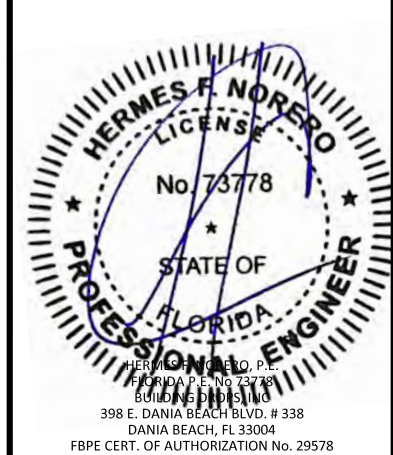


MESKER MBM, LLC  
 3440 Standwood Blvd.  
 Huntsville, AL 35811  
 PH: (256) 851-6670

**TITLE:** "N" SERIES COMMERCIAL OUTSWING STEEL DOOR TRAMSOMS AND SIDELITES (HVHZ) (IMPACT)  
**HORIZONTAL SECTIONS**  
**PREPARED BY:** BUILDING DROPS, INC.  
 398 E. DANIA BEACH BLVD., STE. 338  
 DANIA BEACH, FL 33004  
 PH: (954) 399-8478  
 FAX: (954) 744-4738  
 WEB: www.buildingdrops.com

REMARKS	BY	DATE
2020 FBC UPDATE	NUS	08/13/20
2023 NAME CHANGE	MG	03/06/23

THE INSTALLATION DETAILS DESCRIBED HEREIN ARE GENERIC AND MAY NOT REFLECT ACTUAL CONDITIONS FOR A SPECIFIC SITE. IF SITE CONDITIONS CAUSE INSTALLATION TO DEVIATE FROM THE REQUIREMENTS DETAILED HEREIN, A LICENSED ENGINEER OR ARCHITECT SHALL PREPARE SITE SPECIFIC DOCUMENTS FOR USE WITH THIS DOCUMENT.



FL #:

**FL15544**

DATE: 06/03/16

DWG. BY: LS      CHK. BY: HFN

SCALE: NTS

DWG. #: MDI002

SHEET:

4/24/2023 11:53 AM s:\projects\mesker mbm, llc\fb\23-0112 - fbc submittal - commercial steel doors revisions\dwgs\115544\mdi002.dwg

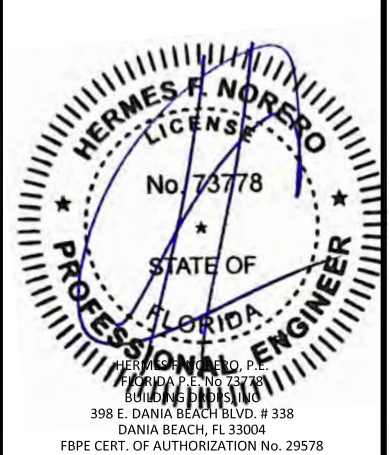
TITLE: "N" SERIES COMMERCIAL OUTSWING  
STEEL DOOR TRAMSOMS AND SIDELITES  
(HVHZ) (IMPACT)  
HORIZONTAL SECTIONS

PREPARED BY:  
**BUILDING DROPS, INC.**  
398 E. DANIA BEACH BLVD., STE. 338  
DANIA BEACH, FL 33004  
PH: (954) 399-8478  
FAX: (954) 744-4738  
WEB: www.buildingdrops.com

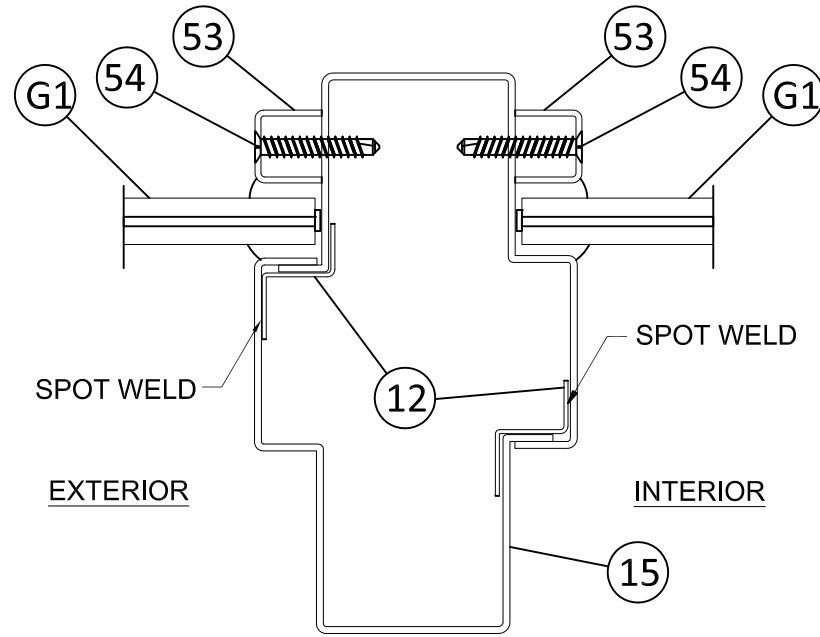


REMARKS	BY	DATE
2020 FBC UPDATE	NUS	08/13/20
2023 NAME CHANGE	MG	03/06/23

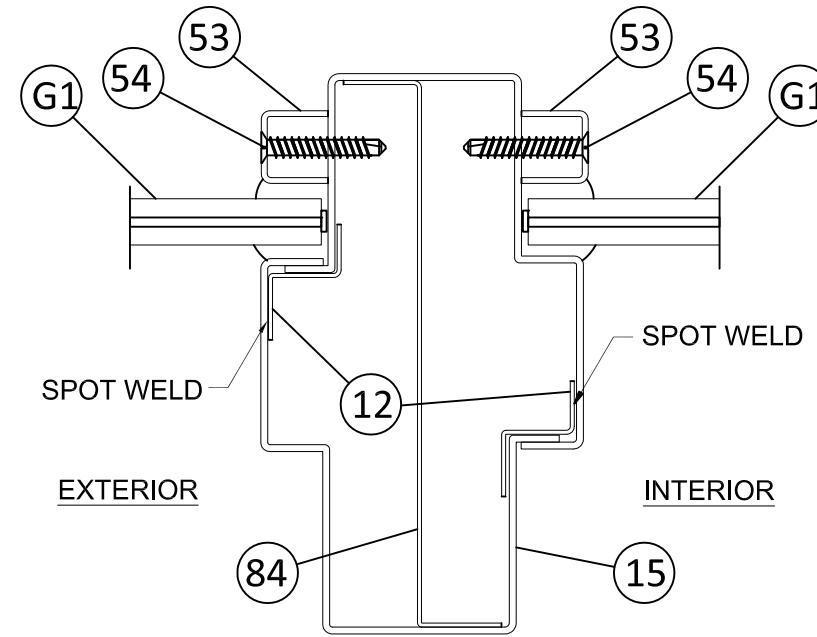
THE INSTALLATION DETAILS DESCRIBED HEREIN ARE GENERIC AND MAY NOT REFLECT ACTUAL CONDITIONS FOR A SPECIFIC SITE. IF SITE CONDITIONS CAUSE INSTALLATION TO DEVIATE FROM THE REQUIREMENTS DETAILED HEREIN, A LICENSED ENGINEER OR ARCHITECT SHALL PREPARE SITE SPECIFIC DOCUMENTS FOR USE WITH THIS DOCUMENT.



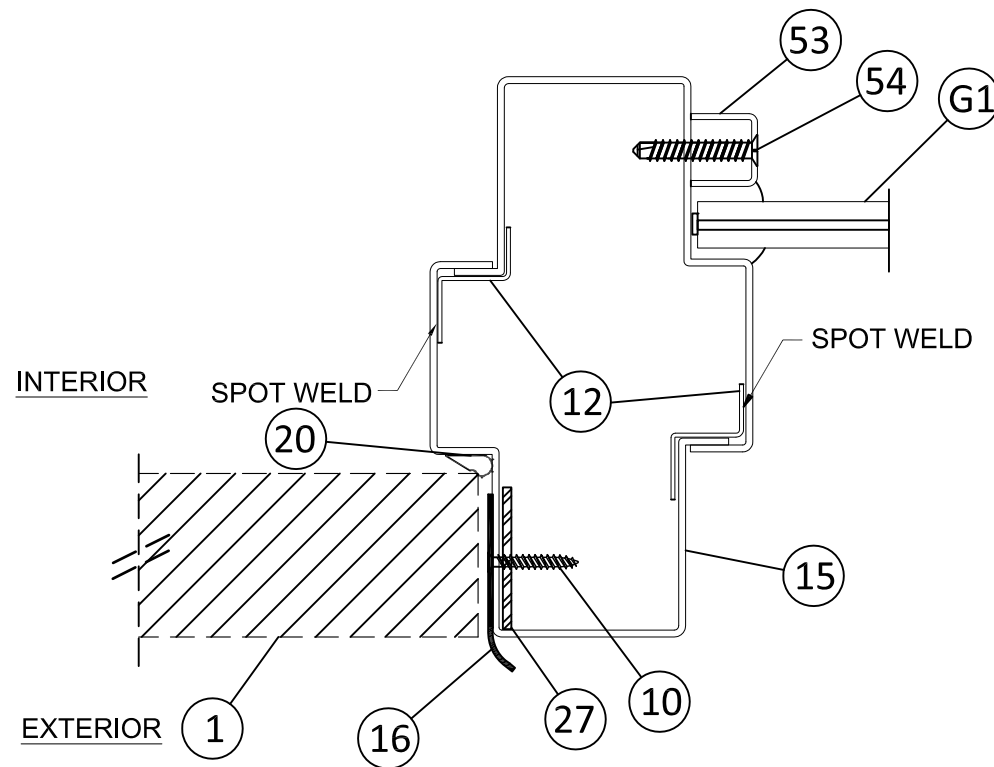
FL #:	<b>FL15544</b>
DATE:	<b>06/03/16</b>
DWG. BY:	<b>LS</b>
CHK. BY:	<b>HFN</b>
SCALE:	<b>NTS</b>
DWG. #:	<b>MDI002</b>
SHEET:	<b>6</b>



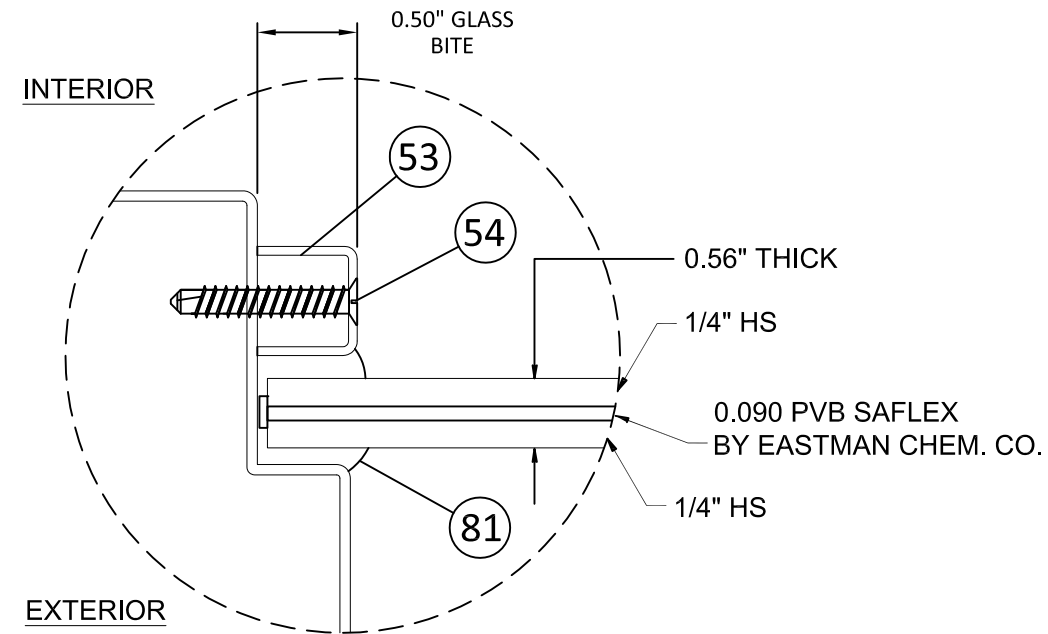
**2**  
**6** HORIZONTAL CROSS SECTION



**3**  
**6** HORIZONTAL CROSS SECTION



**1**  
**6** HORIZONTAL CROSS SECTION



**G1** GLAZING DETAIL  
9/16" MONOLITHIC GLASS  
PRODUCED BY OLDCASTLE

4/24/2023 11:53 AM s:\projects\mesker mbm, llc\fb-23-0112 - fbc submittal - commercial steel doors revisions\dwg\115544\mdi002.dwg



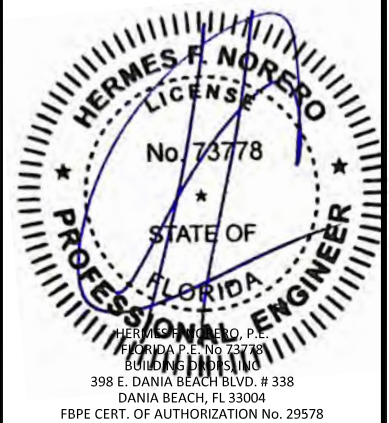
MESKER MBM, LLC  
3440 Standwood Blvd.  
Huntsville, AL 35811  
PH: (256) 851-6670

TITLE:  
"N" SERIES COMMERCIAL OUTSWING  
STEEL DOOR TRAMSOMS AND SIDELITES  
(HVHZ) (IMPACT)  
VERTICAL SECTIONS

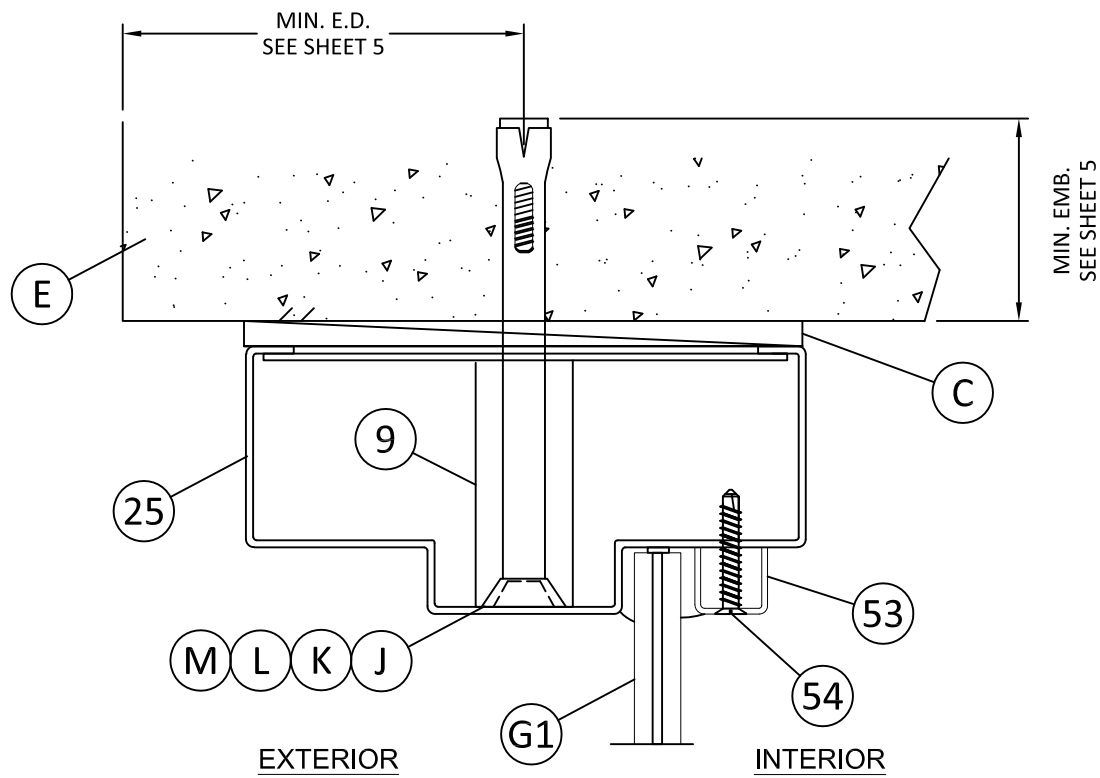
PREPARED BY:  
**B.D.**  
BUILDING DROPS  
BUILDING DROPS, INC.  
398 E. DANIA BEACH BLVD., STE. 338  
DANIA BEACH, FL 33004  
PH: (954) 399-8478  
FAX: (954) 744-4738  
WEB: www.buildingdrops.com

REMARKS	BY	DATE
2020 FBC UPDATE	NUS	08/13/20
2023 NAME CHANGE	MG	03/06/23

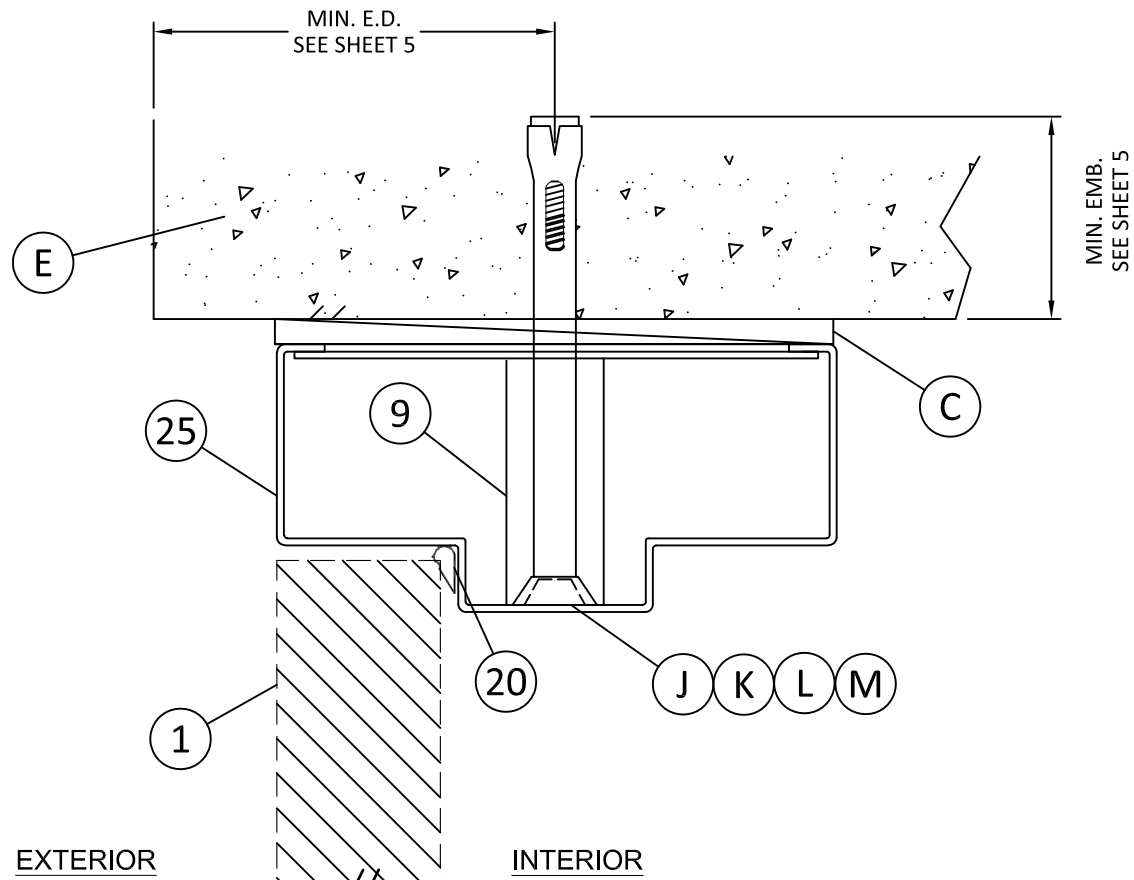
THE INSTALLATION DETAILS DESCRIBED HEREIN ARE GENERIC AND MAY NOT REFLECT ACTUAL CONDITIONS FOR A SPECIFIC SITE. IF SITE CONDITIONS CAUSE INSTALLATION TO DEVIATE FROM THE REQUIREMENTS DETAILED HEREIN, A LICENSED ENGINEER OR ARCHITECT SHALL PREPARE SITE SPECIFIC DOCUMENTS FOR USE WITH THIS DOCUMENT.



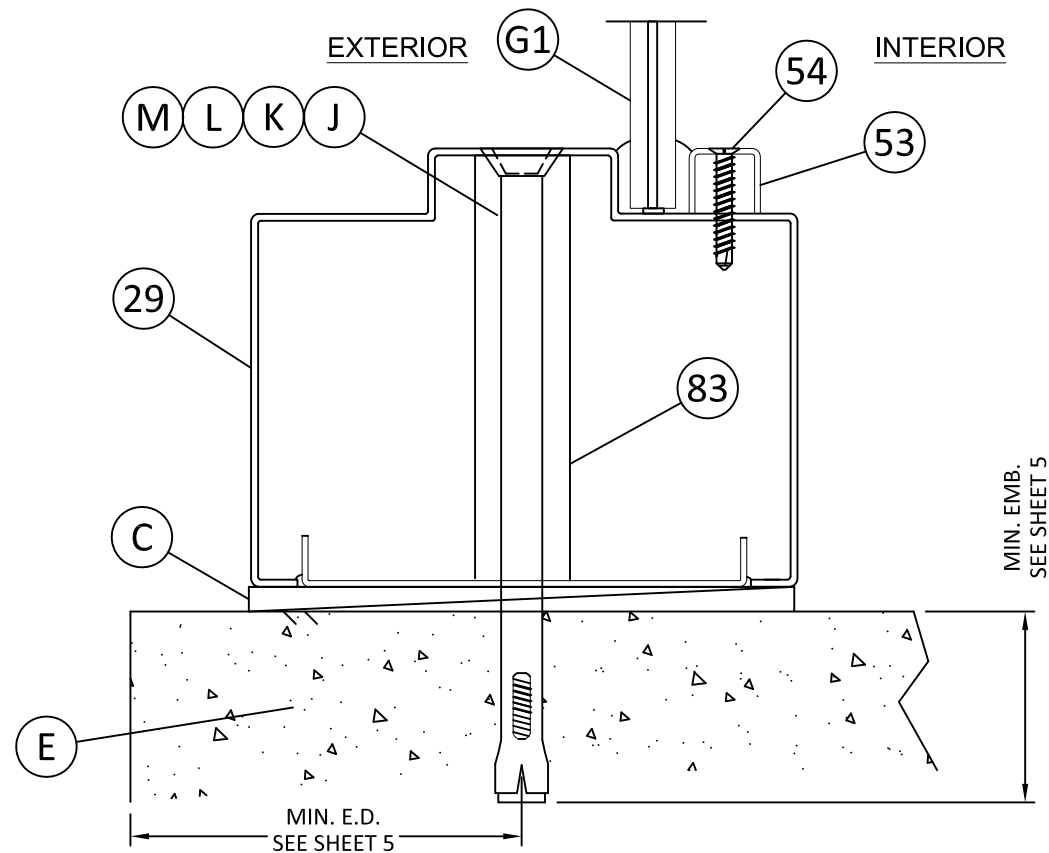
FL #:	<b>FL15544</b>
DATE:	<b>06/03/16</b>
DWG. BY:	<b>LS</b>
CHK. BY:	<b>HFN</b>
SCALE:	<b>NTS</b>
DWG. #:	<b>MDI002</b>
SHEET:	<b>7</b>
	<b>OF 16</b>



**1**  
**7**  
**VERTICAL CROSS SECTION  
W/ 2" FRAME**



**2**  
**7**  
**VERTICAL CROSS SECTION  
W/ 2" FRAME**



**3**  
**7**  
**VERTICAL CROSS SECTION**

4/24/2023 11:53 AM  
s:\projects\mesker mbm, llc\fb-23-0112 - fbc submittal - commercial steel doors revisions\dwg\115544\mdi002.dwg



MESKER MBM, LLC  
 3440 Standwood Blvd.  
 Huntsville, AL 35811  
 PH: (256) 851-6670

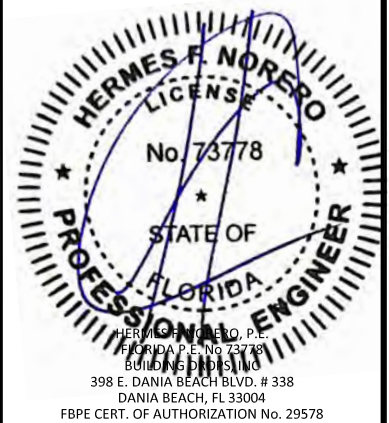
TITLE: "N" SERIES COMMERCIAL OUTSWING  
 STEEL DOOR TRAMSOMS AND SIDELITES  
 (HVHZ) (IMPACT)  
 VERTICAL SECTIONS

PREPARED BY:  
**BUILDING DROPS, INC.**  
 398 E. DANIA BEACH BLVD., STE. 338  
 DANIA BEACH, FL 33004  
 PH: (954) 399-8478  
 FAX: (954) 744-4738  
 WEB: www.buildingdrops.com

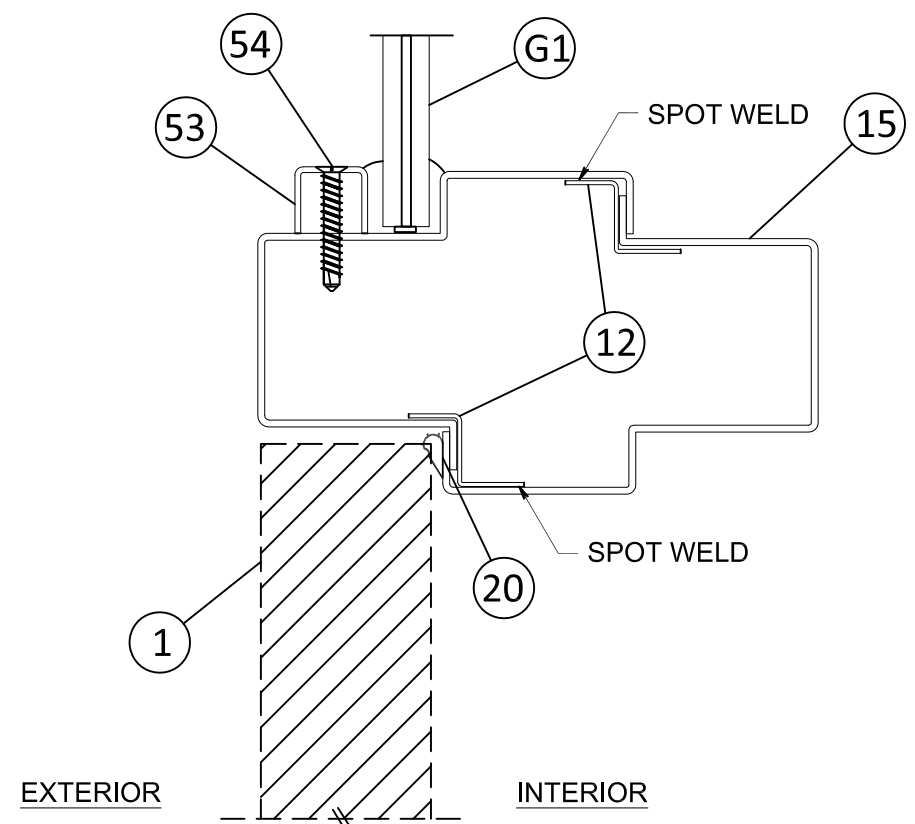


REMARKS	BY	DATE
2020 FBC UPDATE	NUS	08/13/20
2023 NAME CHANGE	MG	03/06/23

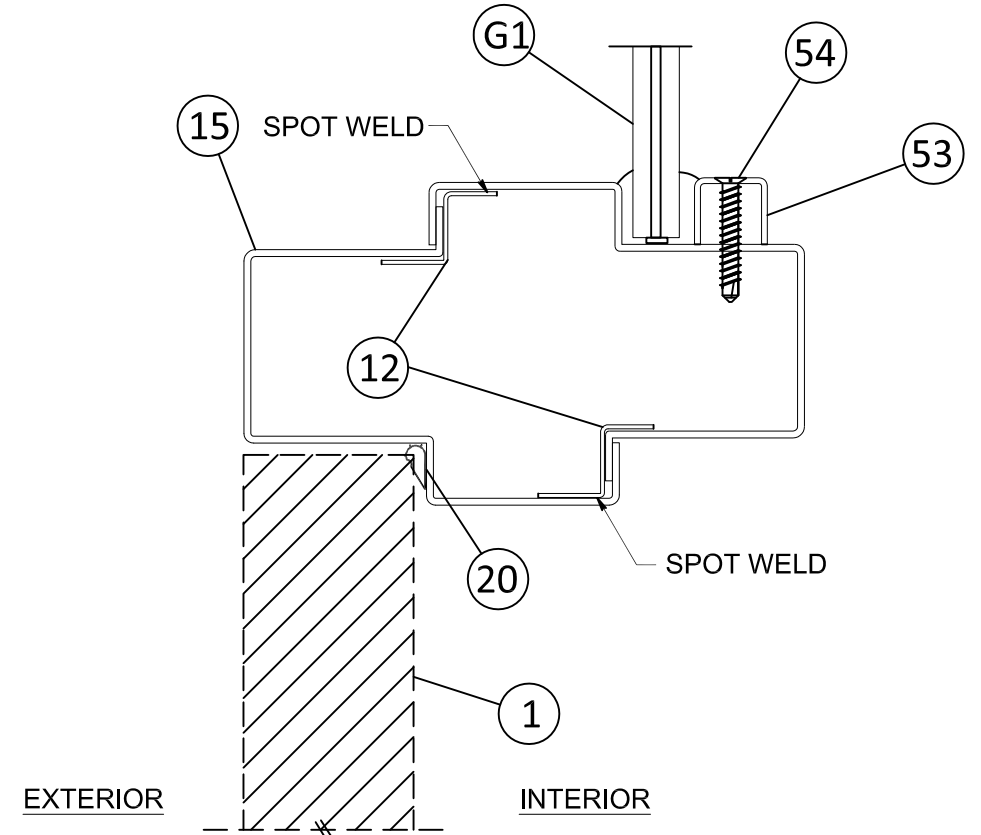
THE INSTALLATION DETAILS DESCRIBED HEREIN ARE GENERIC AND MAY NOT REFLECT ACTUAL CONDITIONS FOR A SPECIFIC SITE. IF SITE CONDITIONS CAUSE INSTALLATION TO DEVIATE FROM THE REQUIREMENTS DETAILED HEREIN, A LICENSED ENGINEER OR ARCHITECT SHALL PREPARE SITE SPECIFIC DOCUMENTS FOR USE WITH THIS DOCUMENT.



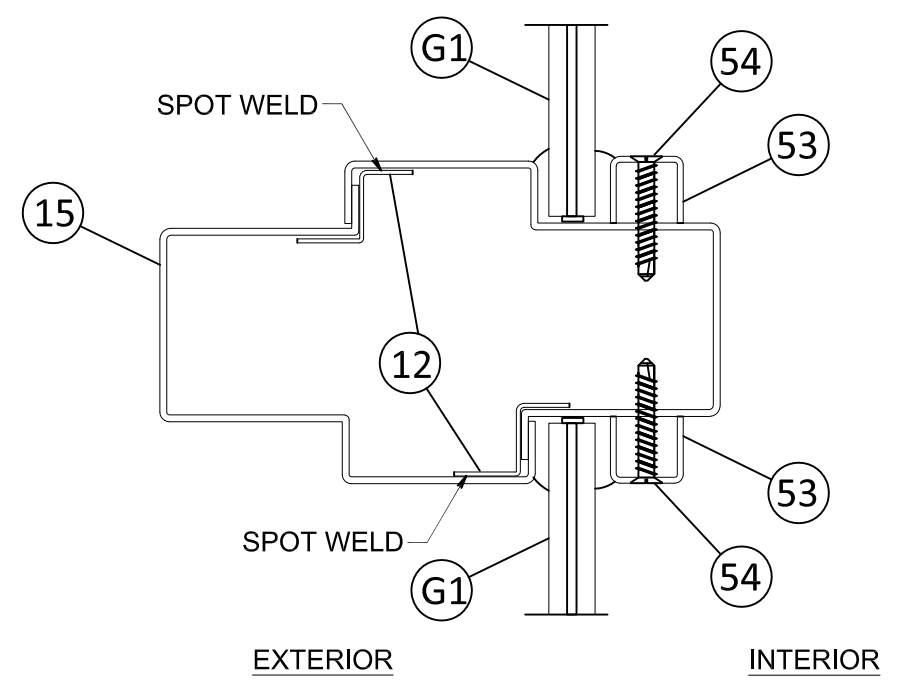
FL #:	<b>FL15544</b>
DATE:	<b>06/03/16</b>
DWG. BY:	<b>LS</b>
CHK. BY:	<b>HFN</b>
SCALE:	<b>NTS</b>
DWG. #:	<b>MDI002</b>
SHEET:	<b>8</b>



**1**  
**8** VERTICAL CROSS SECTION



**2**  
**8** VERTICAL CROSS SECTION



**3**  
**8** VERTICAL CROSS SECTION

4/24/2023 11:53 AM  
 s:\projects\mesker mbm, llc\fb\23-0112 - fbc submittal - commercial steel doors revisions\dwgs\115544\mdi002.dwg

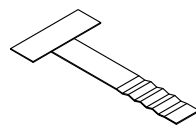


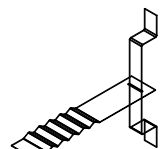
TITLE: "N" SERIES COMMERCIAL OUTSWING  
STEEL DOOR TRANSOMS AND SIDELITES  
(HVHZ) (IMPACT)  
HORIZONTAL SECTIONS

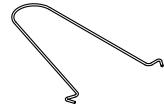
PREPARED BY:  
**BUILDING DROPS, INC.**  
398 E. DANIA BEACH BLVD., STE. 338  
DANIA BEACH, FL 33004  
PH: (954)399-8478  
FAX: (954)744-4738  
WEB: www.buildingdrops.com



**TYPICAL ANCHORS @ JAMB: (REFER TO ELEVATION FOR SPACING)**

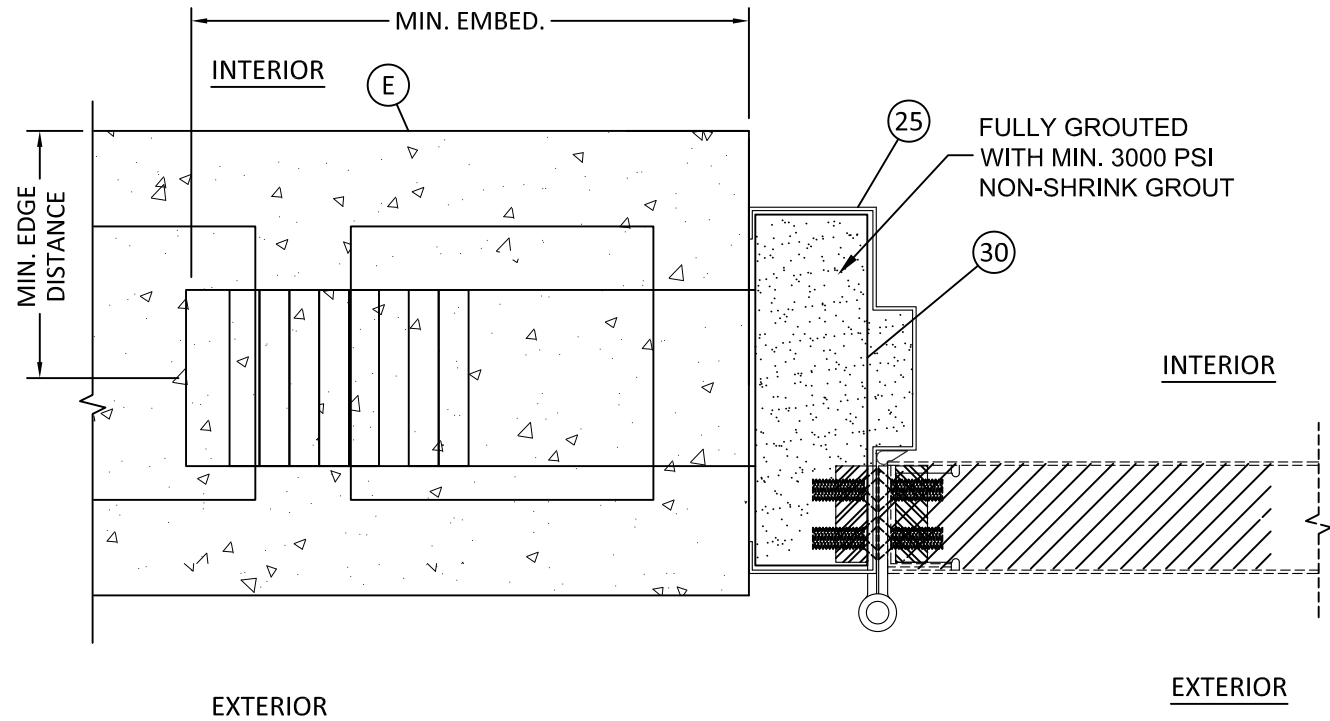
- 

**TYPE I** STRAP ANCHOR (PF-2) (Fy=60 KSI) MIN.  
30 DIRECTLY INTO  $f_c'=3000$  PSI GROUT FILLED CONCRETE BLOCK  
 6" MIN. EMBEDMENT, 2 1/2 " MIN. EDGE DISTANCE, 8" MIN. SPACING
- 

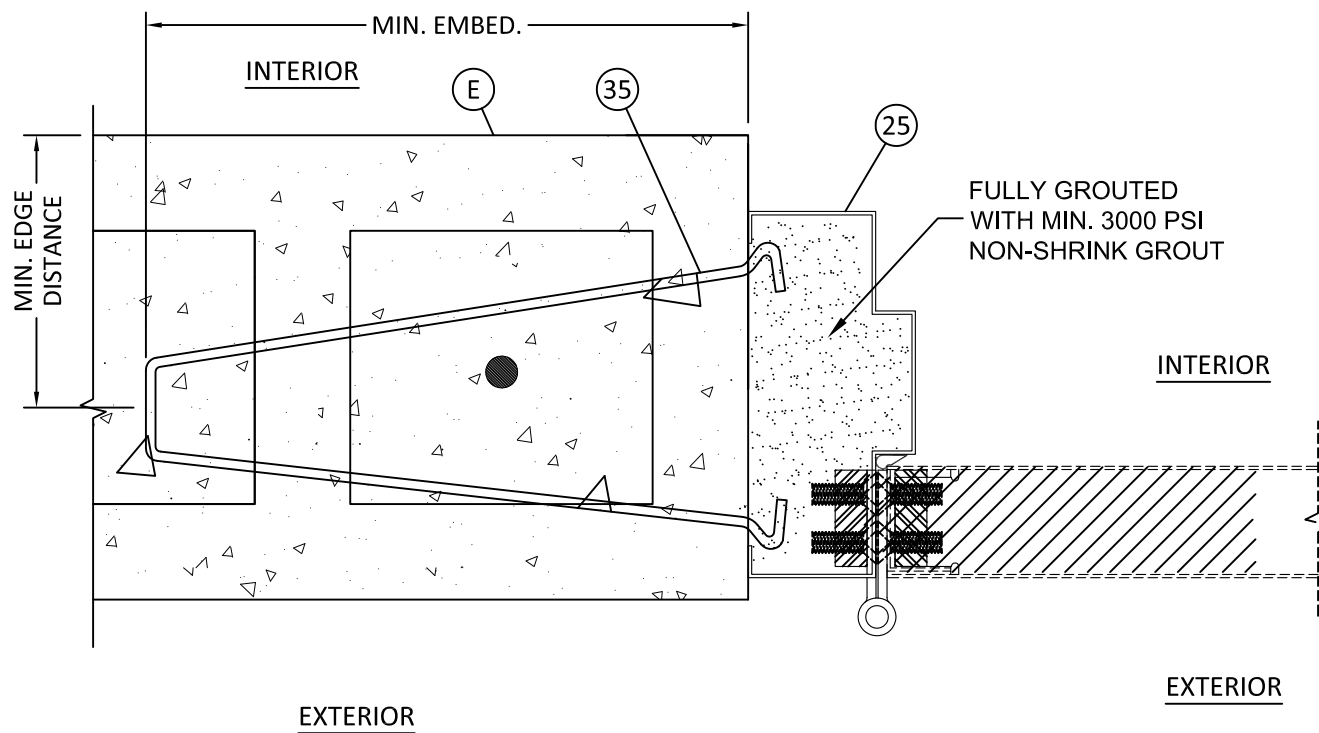
**TYPE J** STRAP ANCHOR (PS-241) (Fy=60 KSI) MIN.  
31 DIRECTLY INTO  $f_c'=3000$  PSI GROUT FILLED CONCRETE BLOCK  
 6" MIN. EMBEDMENT, 2 1/2 " MIN. EDGE DISTANCE, 8" MIN. SPACING
- 

**TYPE K** WIRE ANCHOR (PF-2) (Fy=60KSI) MIN.  
35 DIRECTLY INTO  $f_c'=3000$  PSI CONCRETE, 1-1/2" MIN. EMBED  
 DIRECTLY INTO GROUT FILLED/HOLLOW CONCRETE BLOCK, 1-1/4" MIN. EMBED  
 8 3/4 " MIN. EMBEDMENT, 1 5/8 " MIN. EDGE DISTANCE

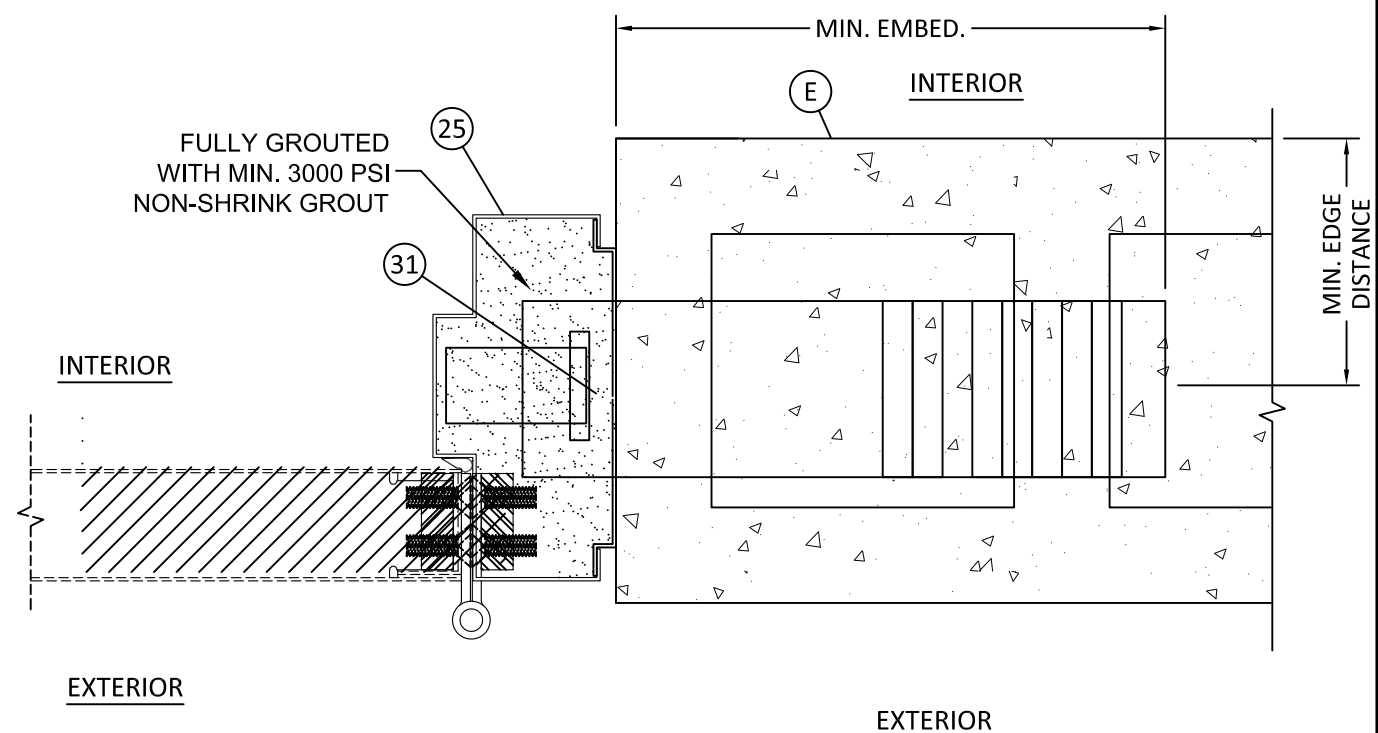
**NOTE:**  
HEAD & JAMBS TO BE FULLY GOUTED WITH MIN. 3000 PSI NON-SHRINK GROUT



**2 HORIZONTAL CROSS SECTION**  
**9 STRAP ANCHOR (PF-2)**



**1 HORIZONTAL CROSS SECTION**  
**9 WIRE ANCHOR**



**3 HORIZONTAL CROSS SECTION**  
**9 STRAP ANCHOR (PS-241)**

REMARKS	BY	DATE
2020 FBC UPDATE	NUS	08/13/20
2023 NAME CHANGE	MG	03/06/23

THE INSTALLATION DETAILS DESCRIBED HEREIN ARE GENERIC AND MAY NOT REFLECT ACTUAL CONDITIONS FOR A SPECIFIC SITE. IF SITE CONDITIONS CAUSE INSTALLATION TO DEVIATE FROM THE REQUIREMENTS DETAILED HEREIN, A LICENSED ENGINEER OR ARCHITECT SHALL PREPARE SITE SPECIFIC DOCUMENTS FOR USE WITH THIS DOCUMENT.



FL #:	<b>FL15544</b>
DATE:	<b>06/03/16</b>
DWG. BY:	<b>LS</b>
CHK. BY:	<b>HFN</b>
SCALE:	<b>NTS</b>
DWG. #:	<b>MDI002</b>
SHEET:	<b>9</b>

4/24/2023 11:53 AM  
s:\projects\mesker mbm, llc\fb\23-0112 - fbc submittal - commercial steel doors revisions\dwg\15544\md002.dwg

TITLE: "N" SERIES COMMERCIAL OUTSWING  
STEEL DOOR TRAMSOMS AND SIDELITES  
(HVHZ) (IMPACT)

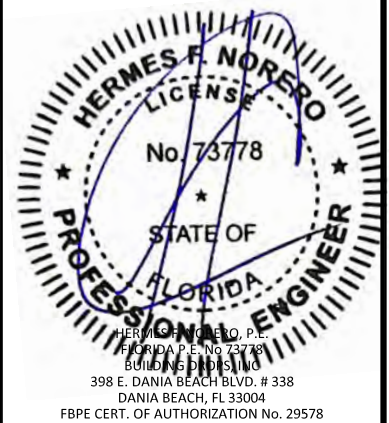
HORIZONTAL SECTIONS

PREPARED BY:  
**BUILDING DROPS, INC.**  
398 E. DANIA BEACH BLVD., STE. 338  
DANIA BEACH, FL 33004  
PH: (954) 399-8478  
FAX: (954) 744-4738  
WEB: www.buildingdrops.com



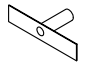
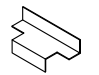
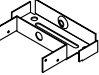
REMARKS	BY	DATE
2020 FBC UPDATE	NUS	08/13/20
2023 NAME CHANGE	MG	03/06/23

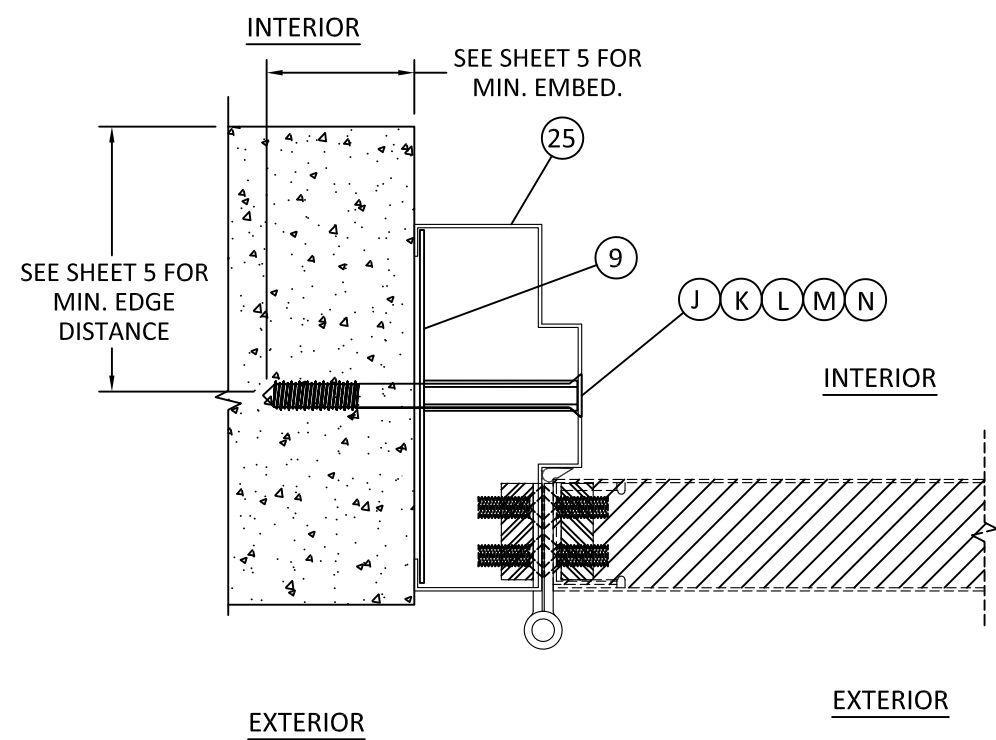
THE INSTALLATION DETAILS DESCRIBED HEREIN ARE GENERIC AND MAY NOT REFLECT ACTUAL CONDITIONS FOR A SPECIFIC SITE. IF SITE CONDITIONS CAUSE INSTALLATION TO DEVIATE FROM THE REQUIREMENTS DETAILED HEREIN, A LICENSED ENGINEER OR ARCHITECT SHALL PREPARE SITE SPECIFIC DOCUMENTS FOR USE WITH THIS DOCUMENT.



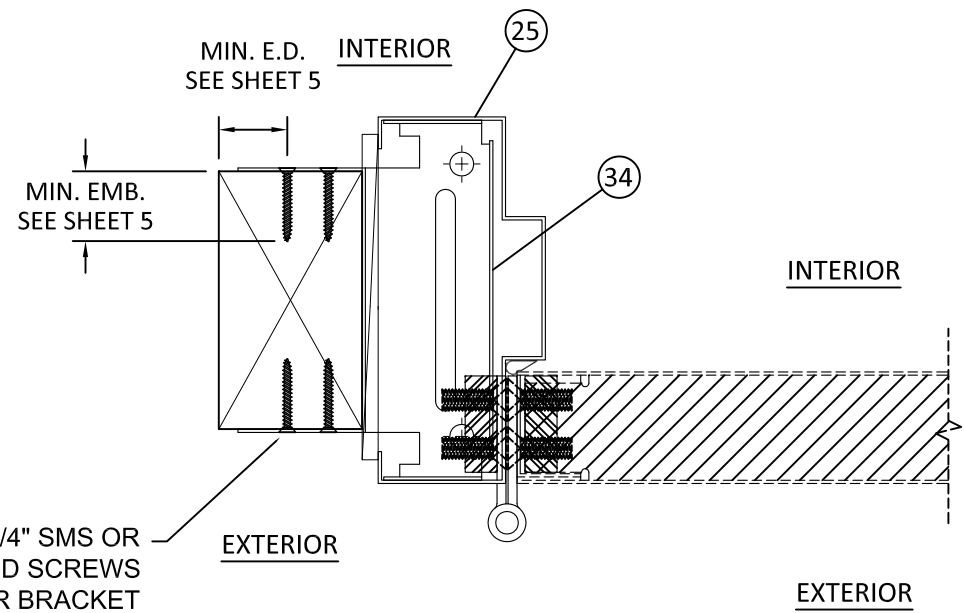
FL #:	<b>FL15544</b>
DATE:	<b>06/03/16</b>
DWG. BY:	<b>LS</b>
CHK. BY:	<b>HFN</b>
SCALE:	<b>NTS</b>
DWG. #:	<b>MDI002</b>
SHEET:	<b>10</b>

**TYPICAL ANCHORS @ JAMB: (REFER TO ELEVATION FOR SPACING)**

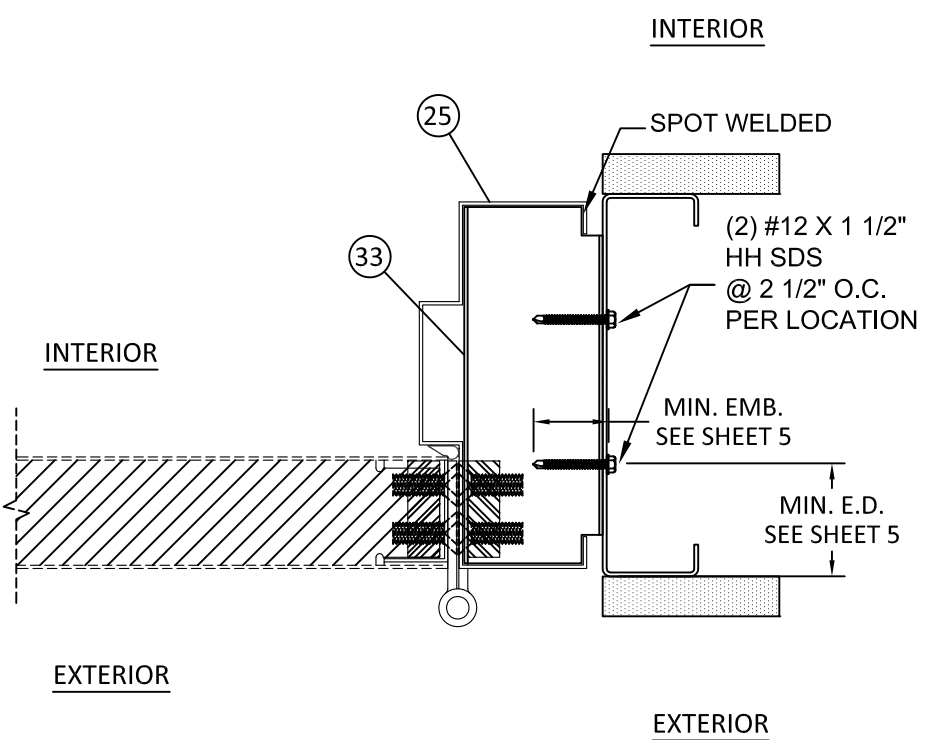
- 
**TYPE L** TUBE ANCHOR (PF-10)  
**9** SEE ELEVATIONS FOR ANCHOR BRACKET LAYOUT  
 SEE SHEET 5 FOR ANCHOR TYPES AND SPACING REQUIREMENTS
- 
**TYPE M** Z ANCHOR (PF-9) WITH 2 #12 X 1 1/2" HH SDS  
**33** SEE ELEVATIONS FOR ANCHOR BRACKET LAYOUT  
 THREE THREADS MIN. PENETRATION BEYOND STEEL  
 1/2" MIN. EDGE DISTANCE, 2 1/2" SPACING
- 
**TYPE N** WOOD STUD ANCHOR (F-24) WITH 4 #8 X 1 3/4" SMS OR  
**34** (4) #8 X 1 3/4" WOOD SCREWS  
 SEE ELEVATIONS FOR ANCHOR BRACKET LAYOUT  
 1 1/2" MIN. EMBEDMENT, 1/2" MIN. EDGE DISTANCE,  
 1" SPACING



**2 HORIZONTAL CROSS SECTION**  
**10 TUBE ANCHOR**



**1 HORIZONTAL CROSS SECTION**  
**10 WOOD STUD ANCHOR**



**3 HORIZONTAL CROSS SECTION**  
**10 Z ANCHOR**

4/24/2023 11:53 AM s:\projects\mesker mbm, llc\fb\23-0112 - fbc submittal - commercial steel doors revisions\dwg\115544\mdi002.dwg

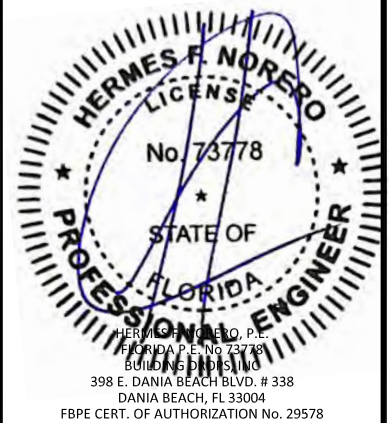
TITLE: "N" SERIES COMMERCIAL OUTSWING  
STEEL DOOR TRANSOMS AND SIDELITES  
(HVHZ) (IMPACT)  
ANCHOR OPTIONS

PREPARED BY:  
**BUILDING DROPS, INC.**  
398 E. DANIA BEACH BLVD., STE. 338  
DANIA BEACH, FL 33004  
PH: (954) 399-8478  
FAX: (954) 744-4738  
WEB: www.buildingdrops.com



REMARKS	BY	DATE
2020 FBC UPDATE	NUS	08/13/20
2023 NAME CHANGE	MG	03/06/23

THE INSTALLATION DETAILS DESCRIBED HEREIN ARE GENERIC AND MAY NOT REFLECT ACTUAL CONDITIONS FOR A SPECIFIC SITE. IF SITE CONDITIONS CAUSE INSTALLATION TO DEVIATE FROM THE REQUIREMENTS DETAILED HEREIN, A LICENSED ENGINEER OR ARCHITECT SHALL PREPARE SITE SPECIFIC DOCUMENTS FOR USE WITH THIS DOCUMENT.



FL #: **FL15544**

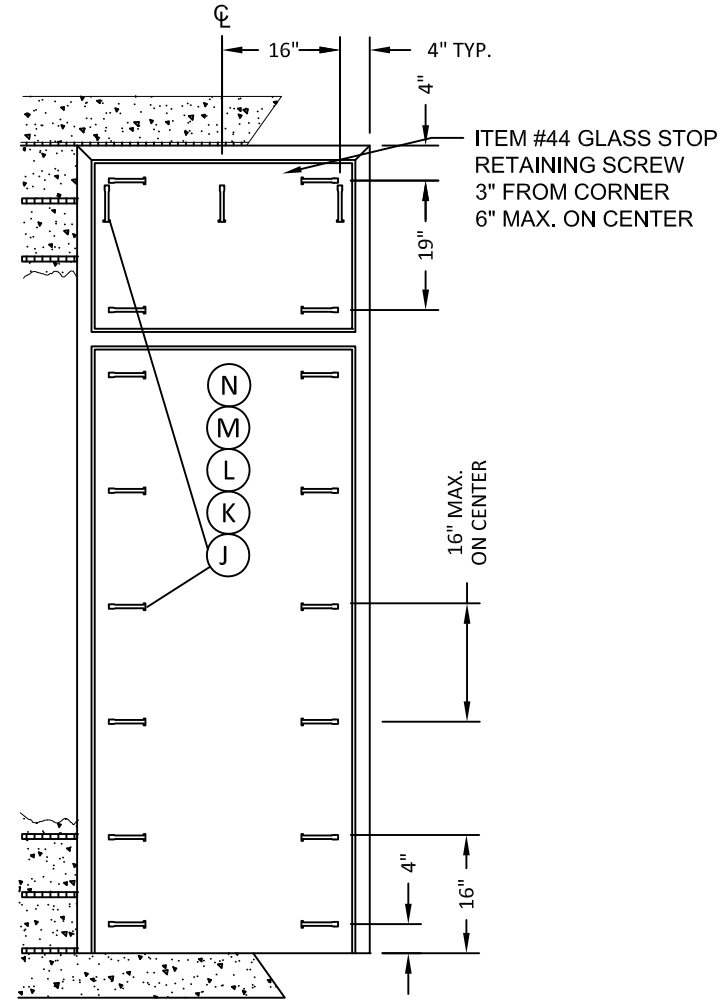
DATE: **06/03/16**

DWG. BY: **LS**      CHK. BY: **HFN**

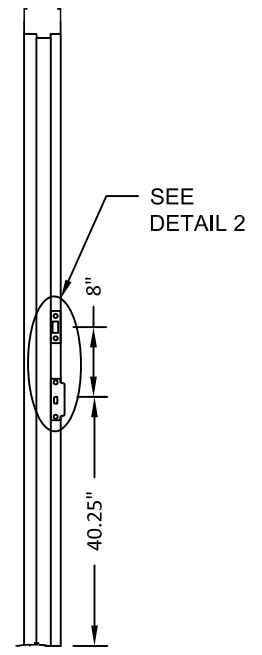
SCALE: **NTS**

DWG. #: **MDI002**

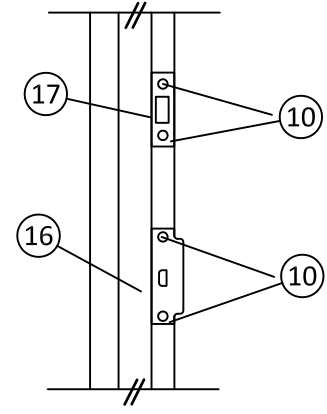
SHEET: **11**



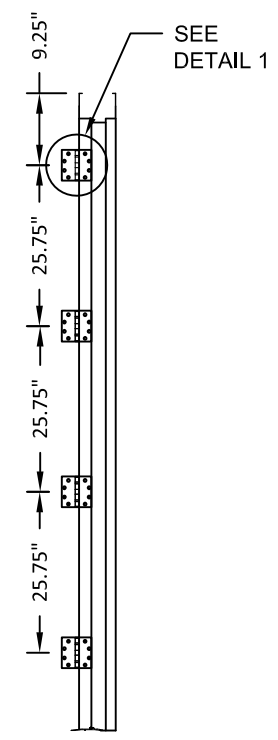
**FRAME ANCHORING**  
CONCRETE/MASONRY



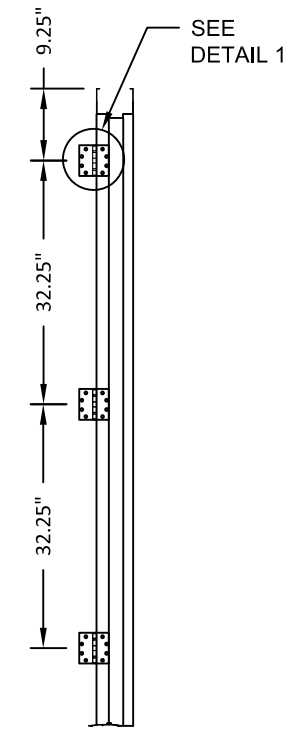
**STRIKE JAMB**



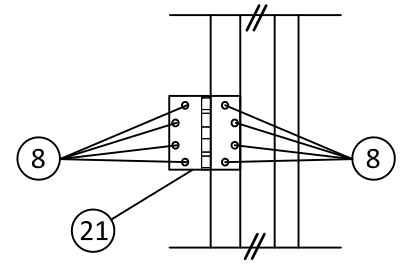
**DETAIL 2**



**HINGE JAMB**  
4 HINGE OPTION  
100" MAX. FRAME HEIGHT



**HINGE JAMB**  
3 HINGE OPTION  
90" MAX. FRAME HEIGHT

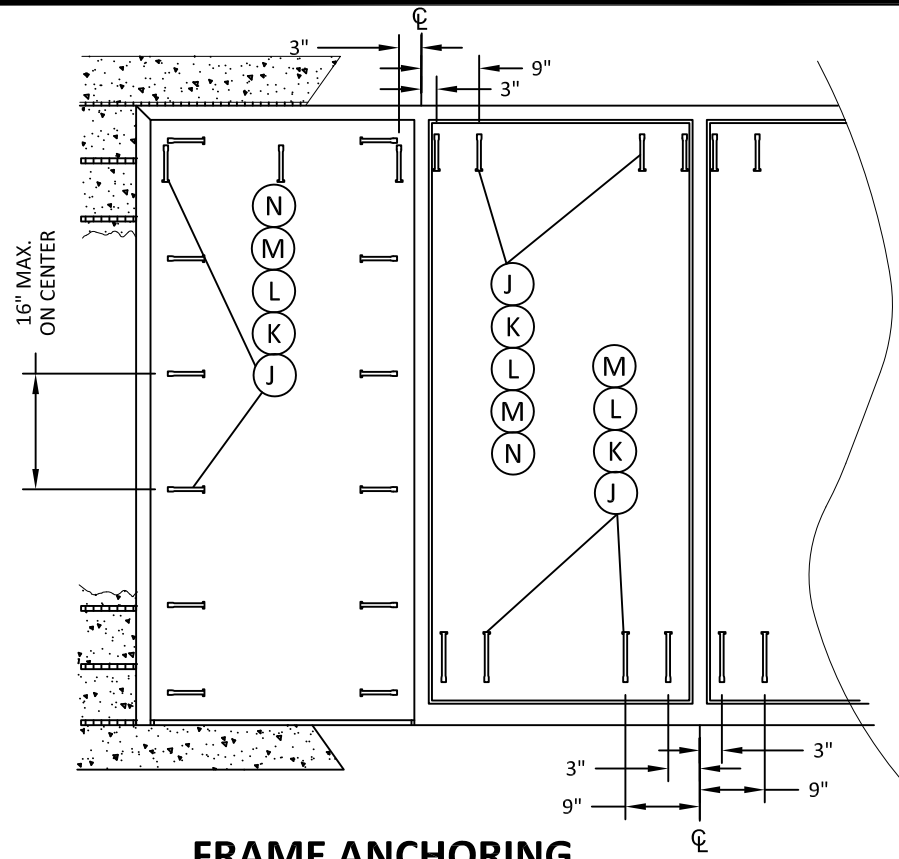


**DETAIL 1**

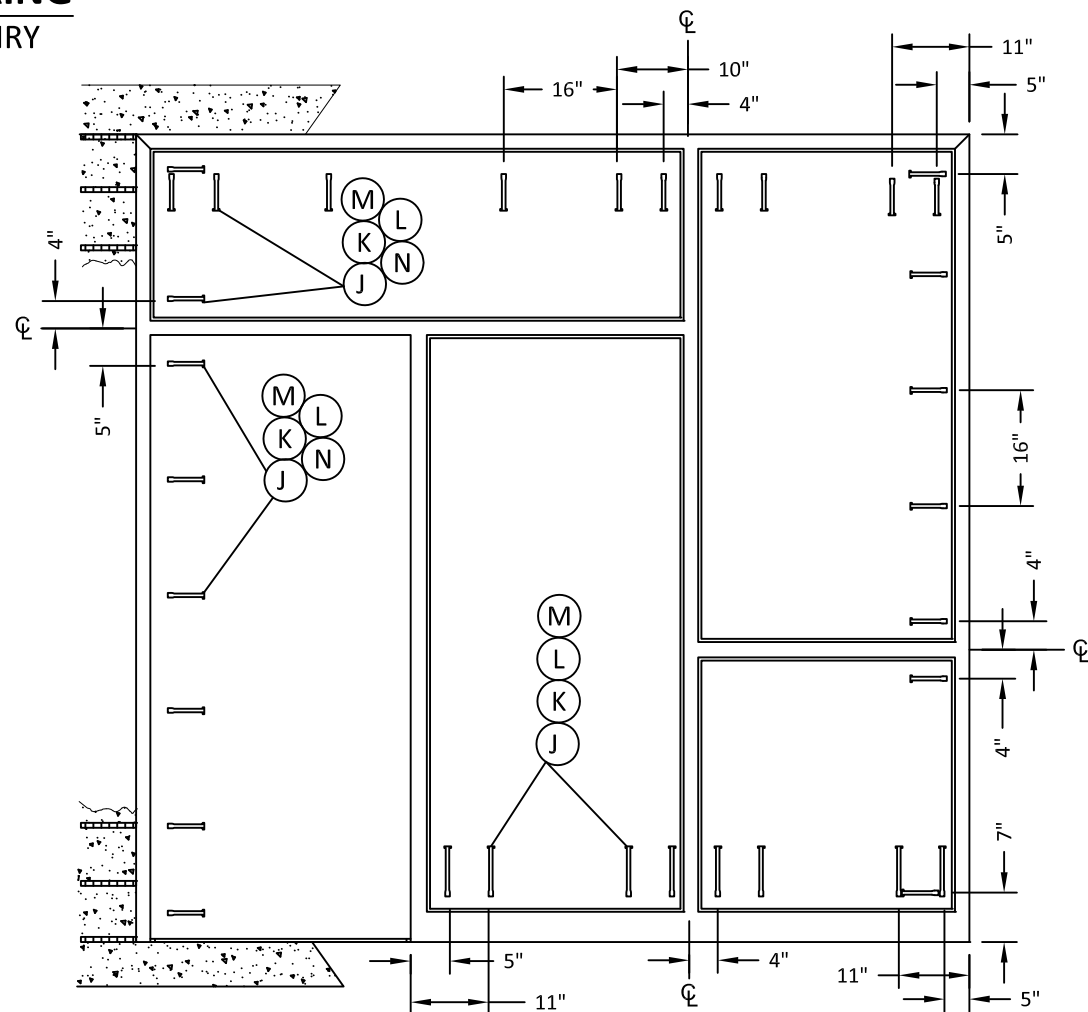
**ANCHOR NOTES:**

1. SUBSTITUTION OF EQUAL CONCRETE SCREWS FROM A DIFFERENT SUPPLIER MAY HAVE DIFFERENT EDGE DISTANCE AND CENTER DISTANCE REQUIREMENTS. MIN. EDGE DISTANCES SHOWN IN DETAILS ARE FOR DYNALBOLT SLEEVE ANCHORS. ADJUST MIN. CLEARANCES FOR ALTERNATE CONCRETE SCREWS AS NECESSARY.
2. CONCRETE SCREW LOCATIONS AT THE CENTERS MAY BE ADJUSTED TO MAINTAIN THE MINIMUM EDGE DISTANCE TO MORTAR JOINTS. IF CONCRETE SCREW LOCATIONS NOTED AS "MAX. ON CENTER" MUST BE ADJUSTED TO MAINTAIN MINIMUM EDGE DISTANCE TO MORTAR JOINTS, ADDITIONAL CONCRETE SCREWS MAY BE REQUIRED TO ENSURE THE MAXIMUM ON CENTER DIMENSION IS NOT EXCEEDED.

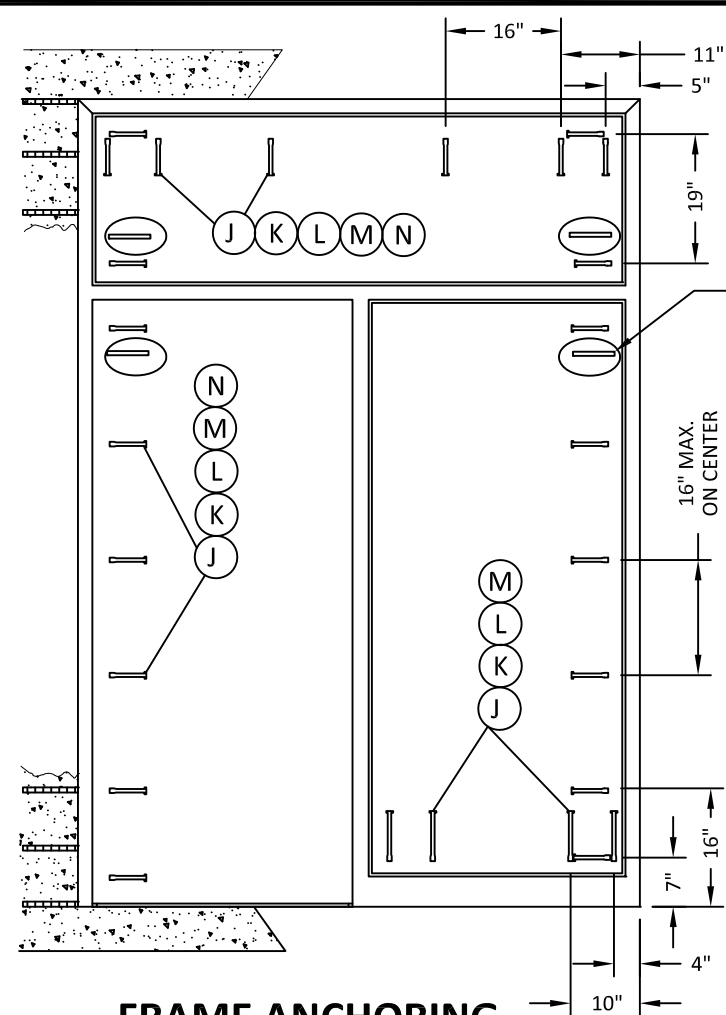
4/24/2023 11:53 AM  
s:\projects\mesker mbm, llc\fb\23-0112 - fbc submittal - commercial steel doors revisions\dwg\115544\md002.dwg



**FRAME ANCHORING**  
CONCRETE/MASONRY



**FRAME ANCHORING**  
CONCRETE/MASONRY



**FRAME ANCHORING**  
CONCRETE/MASONRY

ADD. ANCHORS REQUIRED  
WHEN ANCHOR INTO BLOCK



MESKER MBM, LLC  
3440 Standwood Blvd.  
Huntsville, AL 35811  
PH: (256) 851-6670

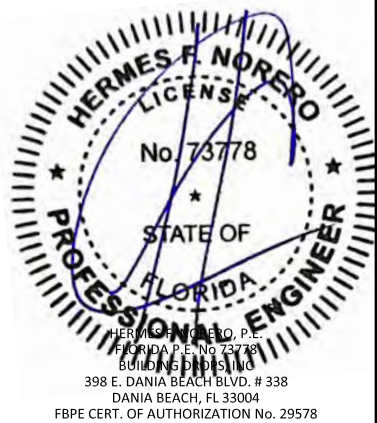
TITLE: "N" SERIES COMMERCIAL OUTSWING  
STEEL DOOR TRAMSOMS AND SIDELITES  
(HVHZ) (IMPACT)  
ANCHOR OPTIONS

PREPARED BY:  
**BUILDING DROPS, INC.**  
398 E. DANIA BEACH BLVD., STE. 338  
DANIA BEACH, FL 33004  
PH: (954) 399-8478  
FAX: (954) 744-4738  
WEB: www.buildingdrops.com



REMARKS	BY	DATE
2020 FBC UPDATE	NUS	08/13/20
2023 NAME CHANGE	MG	03/06/23

THE INSTALLATION DETAILS DESCRIBED HEREIN ARE GENERIC AND MAY NOT REFLECT ACTUAL CONDITIONS FOR A SPECIFIC SITE. IF SITE CONDITIONS CAUSE INSTALLATION TO DEVIATE FROM THE REQUIREMENTS DETAILED HEREIN, A LICENSED ENGINEER OR ARCHITECT SHALL PREPARE SITE SPECIFIC DOCUMENTS FOR USE WITH THIS DOCUMENT.



FL #:	<b>FL15544</b>
DATE:	<b>06/03/16</b>
DWG. BY:	<b>LS</b>
CHK. BY:	<b>HFN</b>
SCALE:	<b>NTS</b>
DWG. #:	<b>MDI002</b>
SHEET:	<b>12</b>

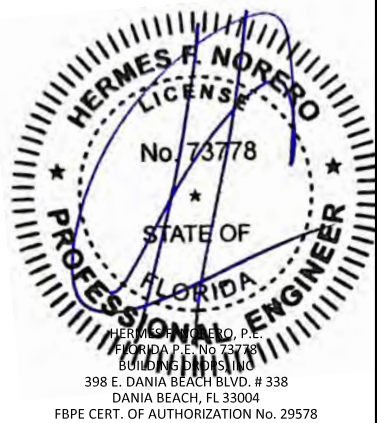
TITLE: "N" SERIES COMMERCIAL OUTSWING  
STEEL DOOR TRAMSOMS AND SIDELITES  
(HVHZ) (IMPACT)  
ANCHOR OPTIONS

PREPARED BY:  
**BUILDING DROPS, INC.**  
398 E. DANIA BEACH BLVD., STE. 338  
DANIA BEACH, FL 33004  
PH: (954) 399-8478  
FAX: (954) 744-4738  
WEB: www.buildingdrops.com



REMARKS	BY	DATE
2020 FBC UPDATE	NUS	08/13/20
2023 NAME CHANGE	MG	03/06/23

THE INSTALLATION DETAILS DESCRIBED HEREIN ARE GENERIC AND MAY NOT REFLECT ACTUAL CONDITIONS FOR A SPECIFIC SITE. IF SITE CONDITIONS CAUSE INSTALLATION TO DEVIATE FROM THE REQUIREMENTS DETAILED HEREIN, A LICENSED ENGINEER OR ARCHITECT SHALL PREPARE SITE SPECIFIC DOCUMENTS FOR USE WITH THIS DOCUMENT.



FL #:

**FL15544**

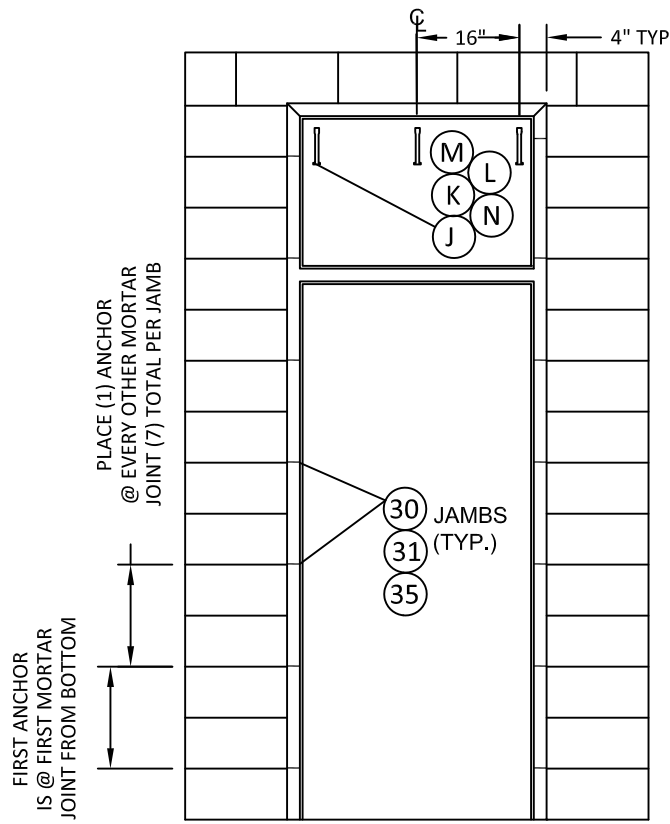
DATE: **06/03/16**

DWG. BY: **LS**      CHK. BY: **HFN**

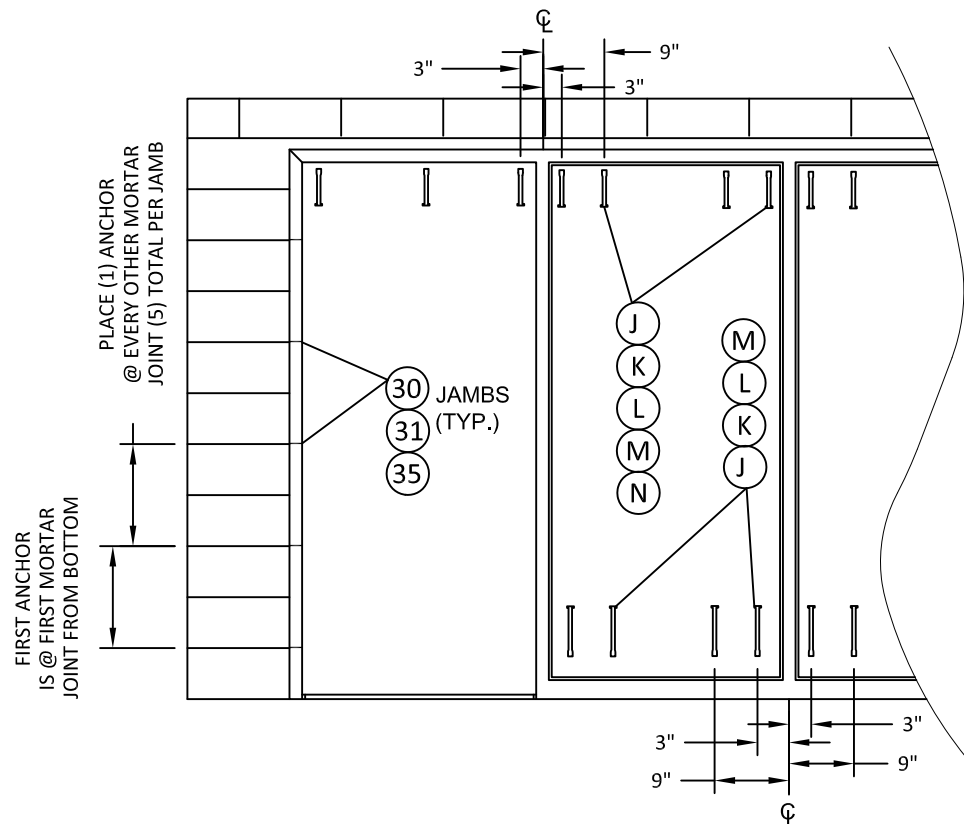
SCALE: **NTS**

DWG. #: **MDI002**

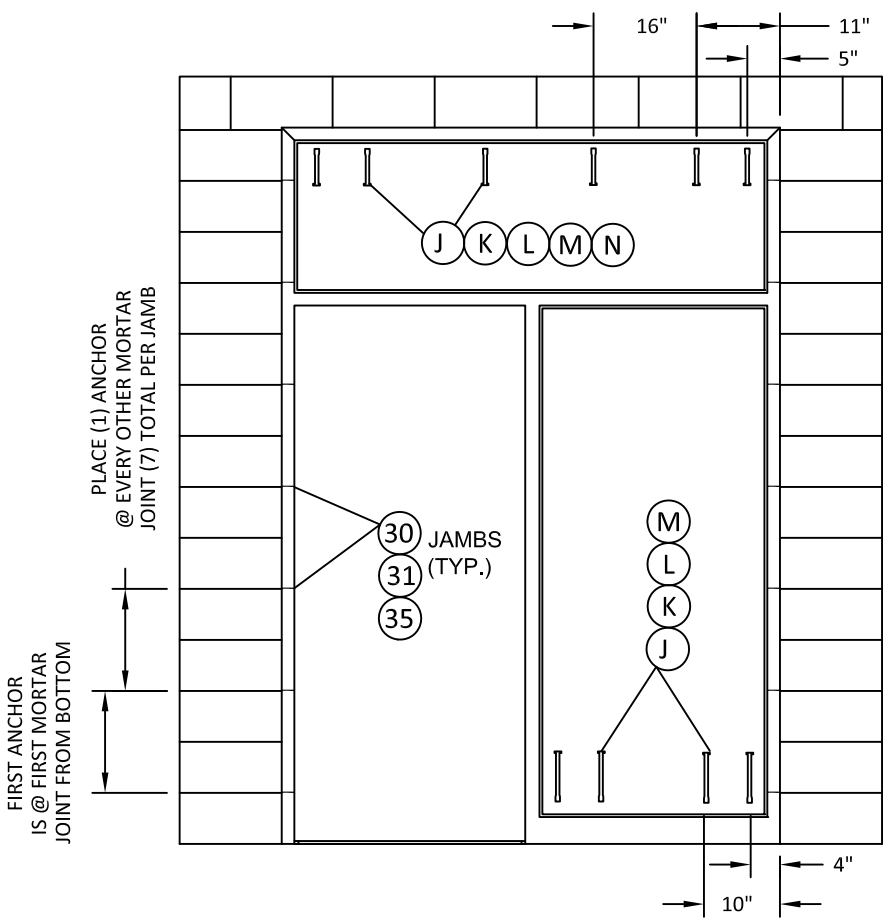
SHEET:



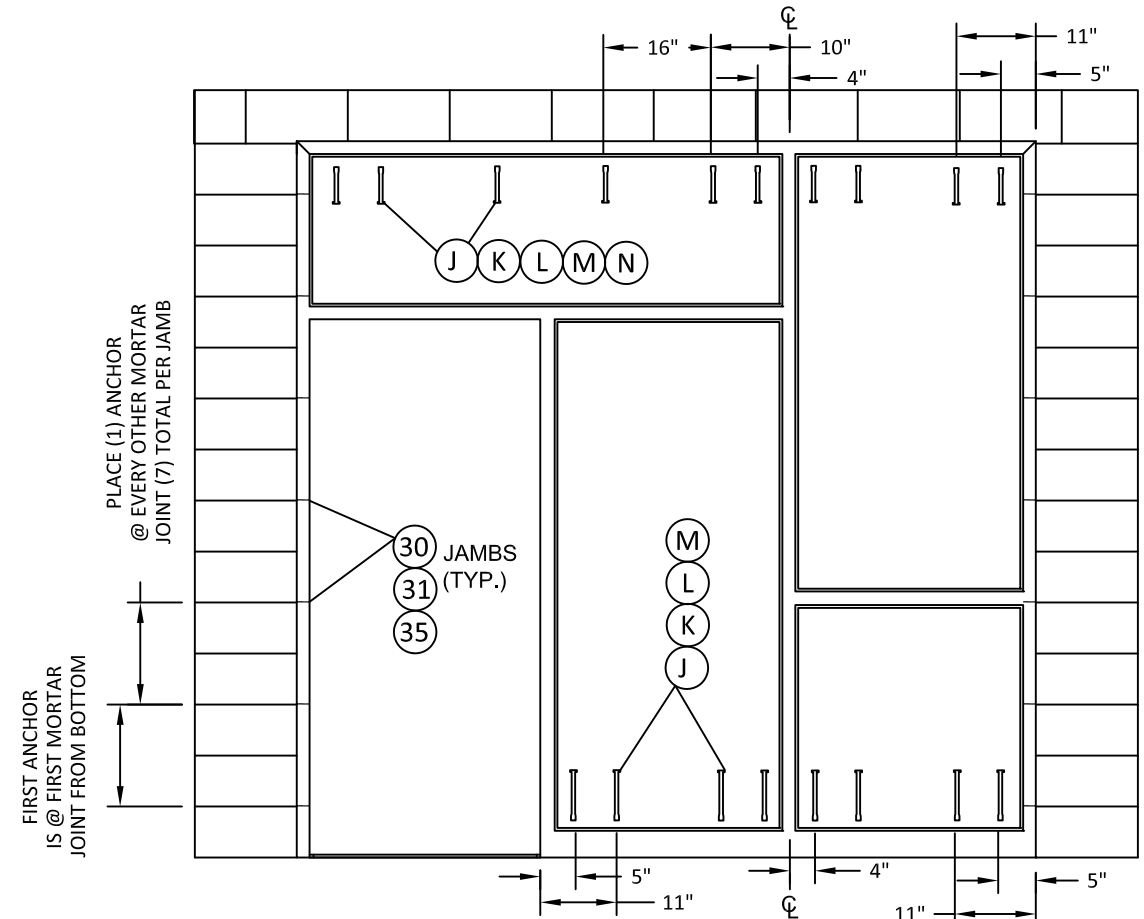
**FRAME ANCHORING**  
T STRAP & WIRE ANCHOR



**FRAME ANCHORING**  
T STRAP & WIRE ANCHOR



**FRAME ANCHORING**  
T STRAP & WIRE ANCHOR



**FRAME ANCHORING**  
T STRAP & WIRE ANCHOR

4/24/2023 11:53 AM  
s:\projects\mesker mbm, llc\fb-23-0112 - fbc submittal - commercial steel doors revisions\dwg\115544\mdi002.dwg

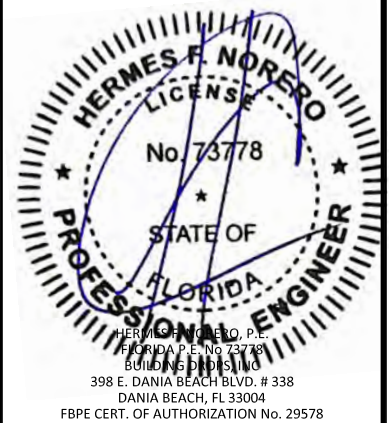
TITLE: "N" SERIES COMMERCIAL OUTSWING  
STEEL DOOR TRAMSOMS AND SIDELITES  
(HVHZ) (IMPACT)  
ANCHOR OPTIONS

PREPARED BY:  
**BUILDING DROPS, INC.**  
398 E. DANIA BEACH BLVD., STE. 338  
DANIA BEACH, FL 33004  
PH: (954) 399-8478  
FAX: (954) 744-4738  
WEB: www.buildingdrops.com

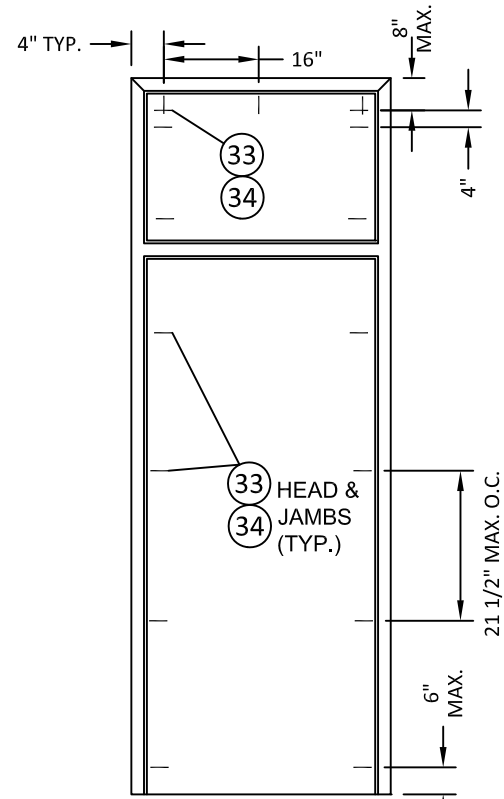


REMARKS	BY	DATE
2020 FBC UPDATE	NUS	08/13/20
2023 NAME CHANGE	MG	03/06/23

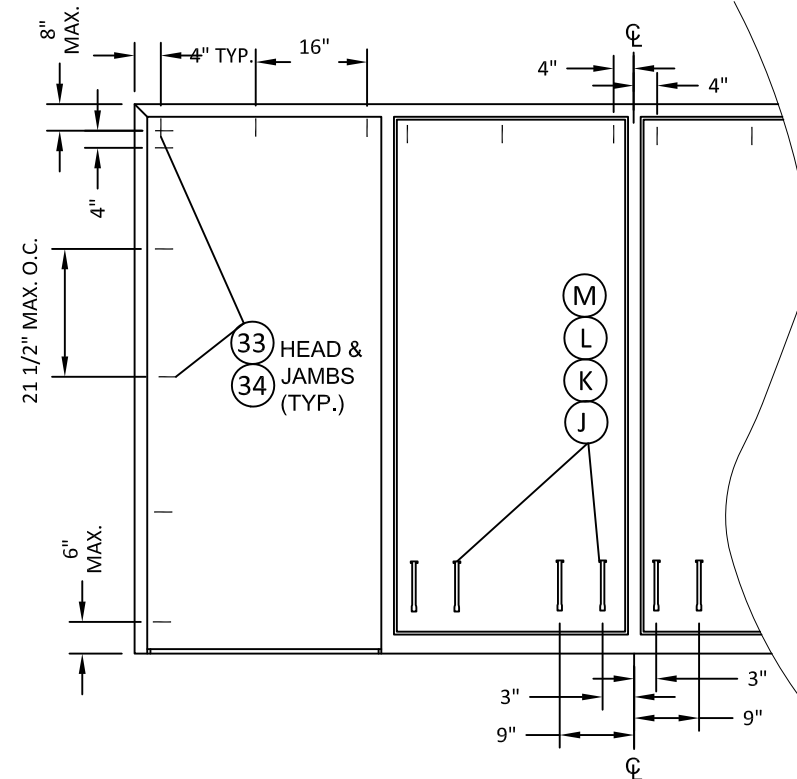
THE INSTALLATION DETAILS DESCRIBED HEREIN ARE GENERIC AND MAY NOT REFLECT ACTUAL CONDITIONS FOR A SPECIFIC SITE. IF SITE CONDITIONS CAUSE INSTALLATION TO DEVIATE FROM THE REQUIREMENTS DETAILED HEREIN, A LICENSED ENGINEER OR ARCHITECT SHALL PREPARE SITE SPECIFIC DOCUMENTS FOR USE WITH THIS DOCUMENT.



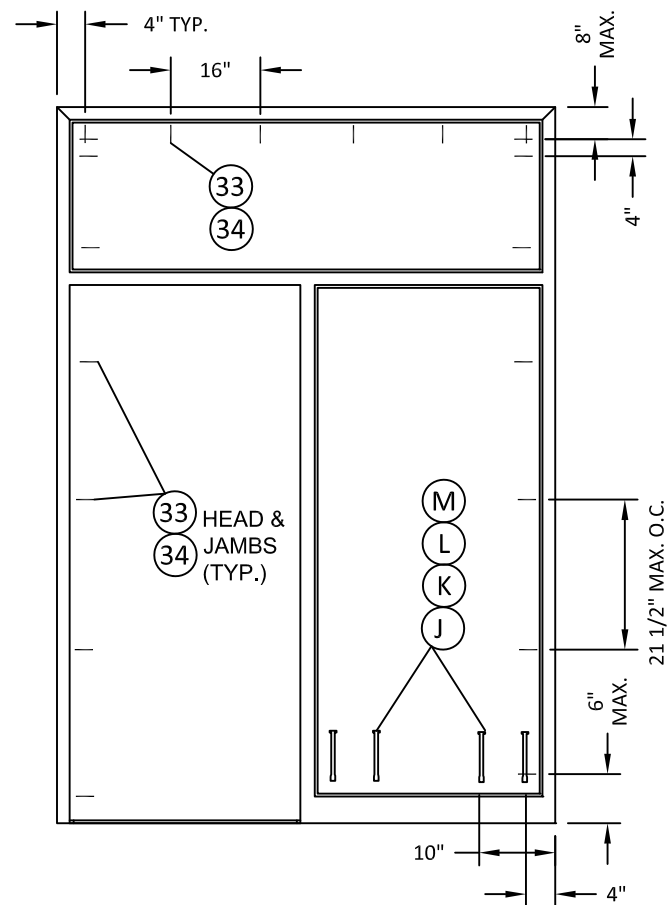
FL #:	<b>FL15544</b>
DATE:	<b>06/03/16</b>
DWG. BY:	<b>LS</b>
CHK. BY:	<b>HFN</b>
SCALE:	<b>NTS</b>
DWG. #:	<b>MDI002</b>
SHEET:	<b>14</b>



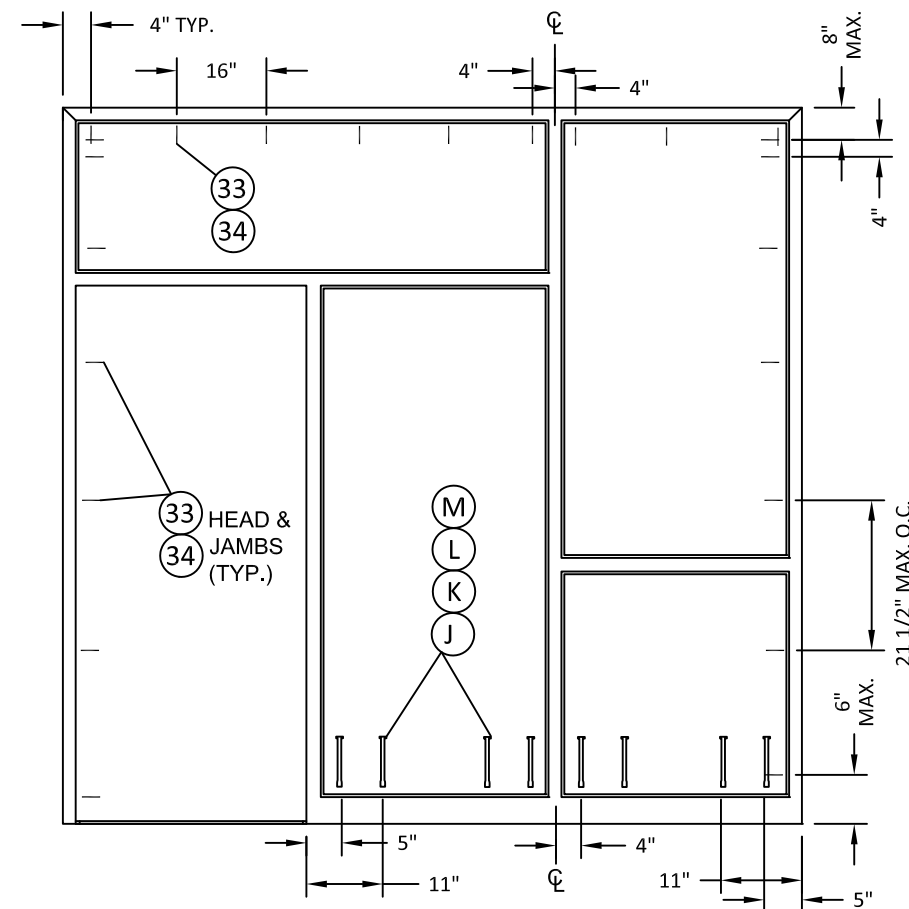
**FRAME ANCHORING**  
WOOD STUD & Z ANCHOR



**FRAME ANCHORING**  
WOOD STUD & Z ANCHOR



**FRAME ANCHORING**  
WOOD STUD & Z ANCHOR



**FRAME ANCHORING**  
WOOD STUD & Z ANCHOR

TITLE: "N" SERIES COMMERCIAL OUTSWING  
STEEL DOOR TRAMSOMS AND SIDELITES  
(HVHZ) (IMPACT)

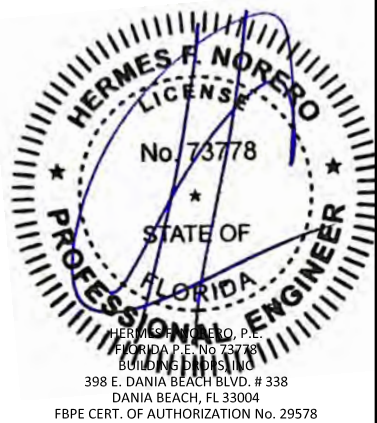
COMPONENTS

PREPARED BY:  
**BUILDING DROPS, INC.**  
398 E. DANIA BEACH BLVD., STE. 338  
DANIA BEACH, FL 33004  
PH: (954) 399-8478  
FAX: (954) 744-4738  
WEB: www.buildingdrops.com



REMARKS	BY	DATE
2020 FBC UPDATE	NUS	08/13/20
2023 NAME CHANGE	MG	03/06/23

THE INSTALLATION DETAILS DESCRIBED HEREIN ARE GENERIC AND MAY NOT REFLECT ACTUAL CONDITIONS FOR A SPECIFIC SITE. IF SITE CONDITIONS CAUSE INSTALLATION TO DEVIATE FROM THE REQUIREMENTS DETAILED HEREIN, A LICENSED ENGINEER OR ARCHITECT SHALL PREPARE SITE SPECIFIC DOCUMENTS FOR USE WITH THIS DOCUMENT.



FL #:

**FL15544**

DATE: **06/03/16**

DWG. BY: **LS**      CHK. BY: **HFN**

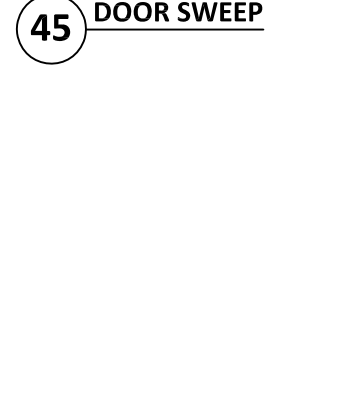
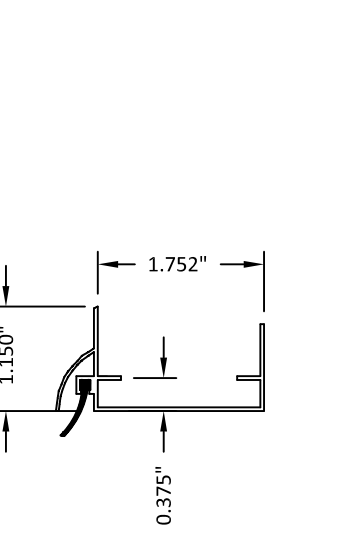
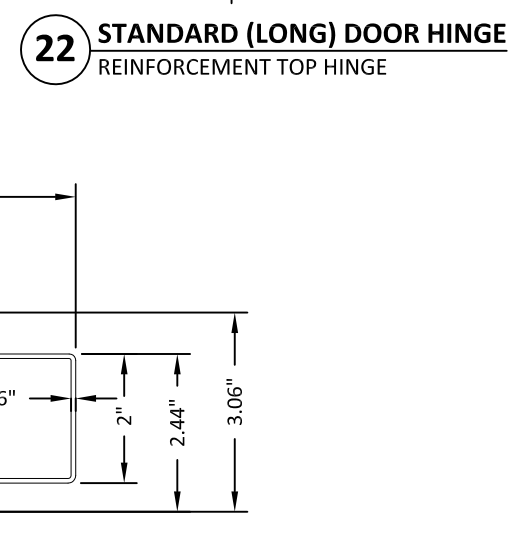
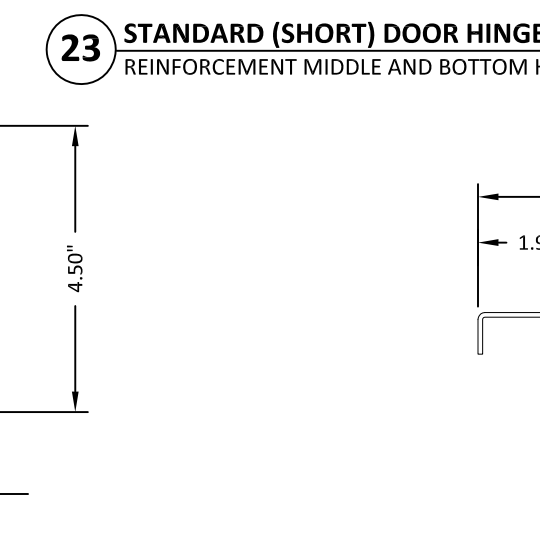
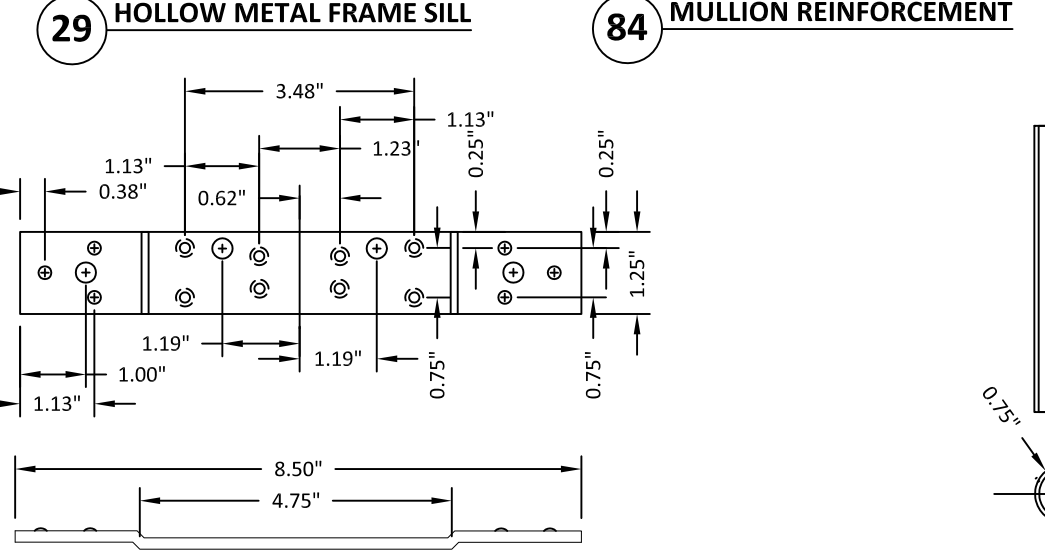
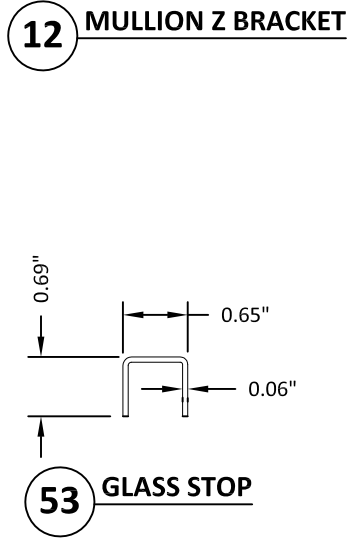
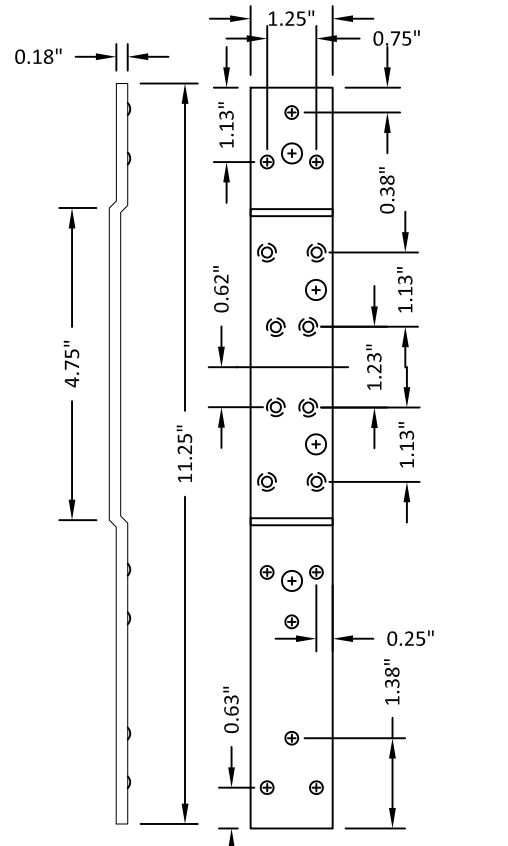
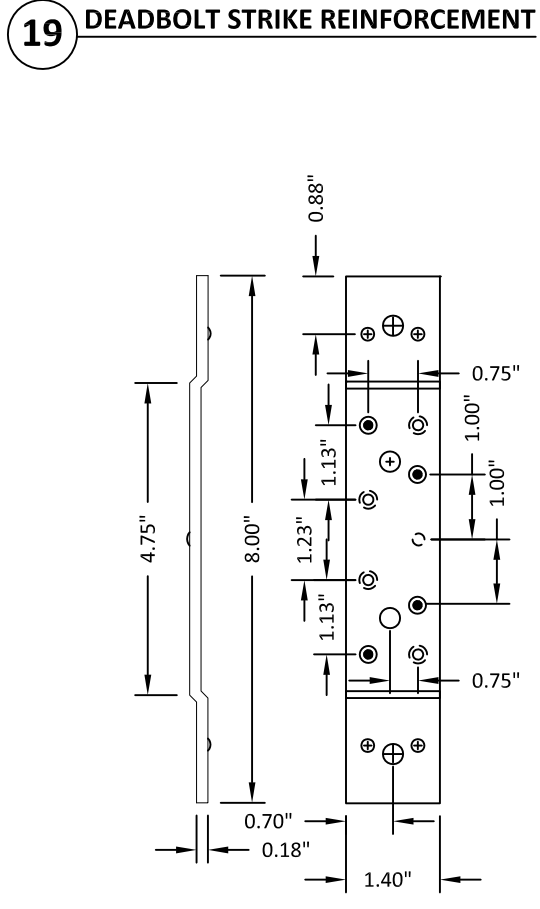
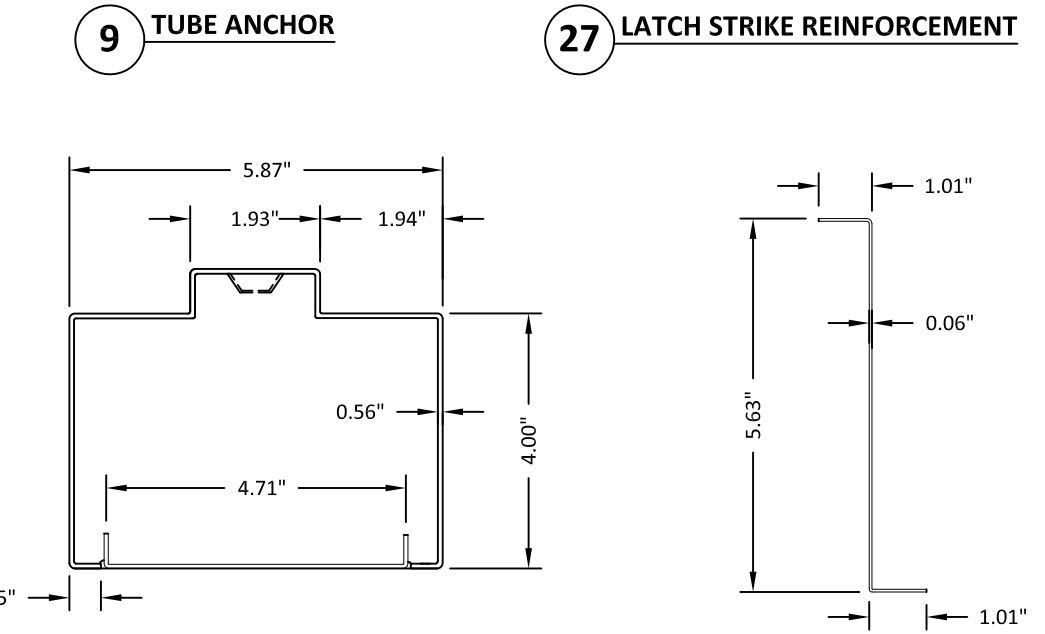
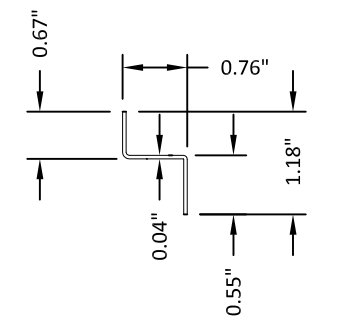
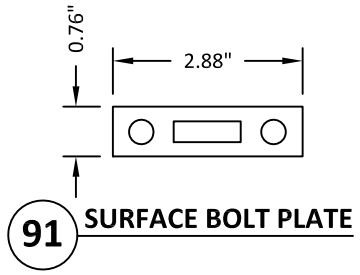
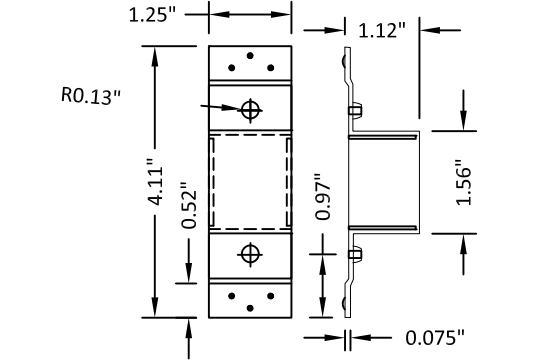
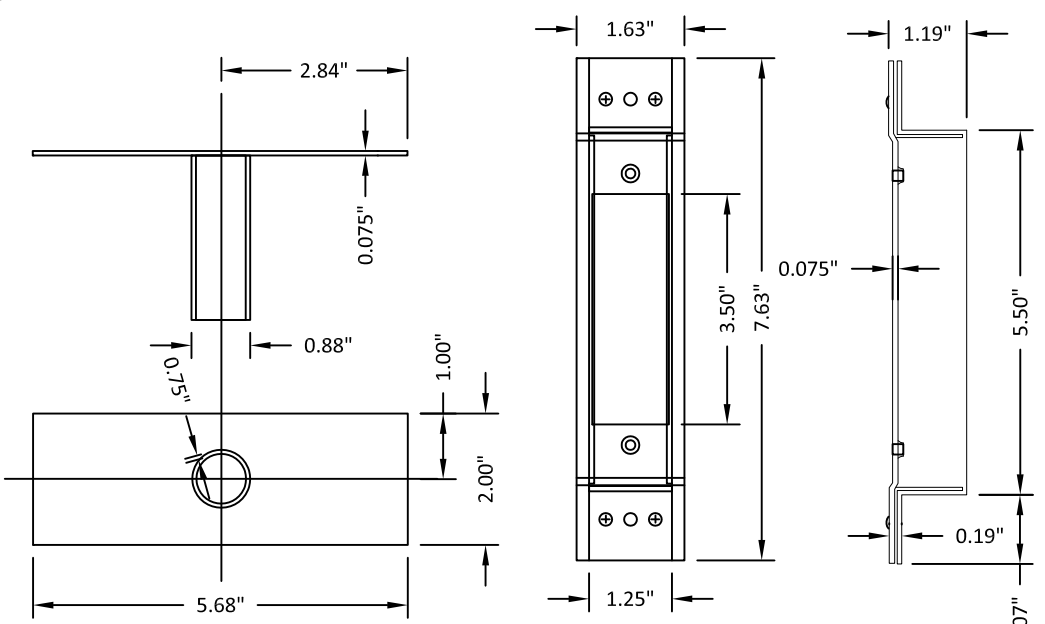
SCALE: **NTS**

DWG. #: **MDI002**

SHEET:

**15**

OF 16

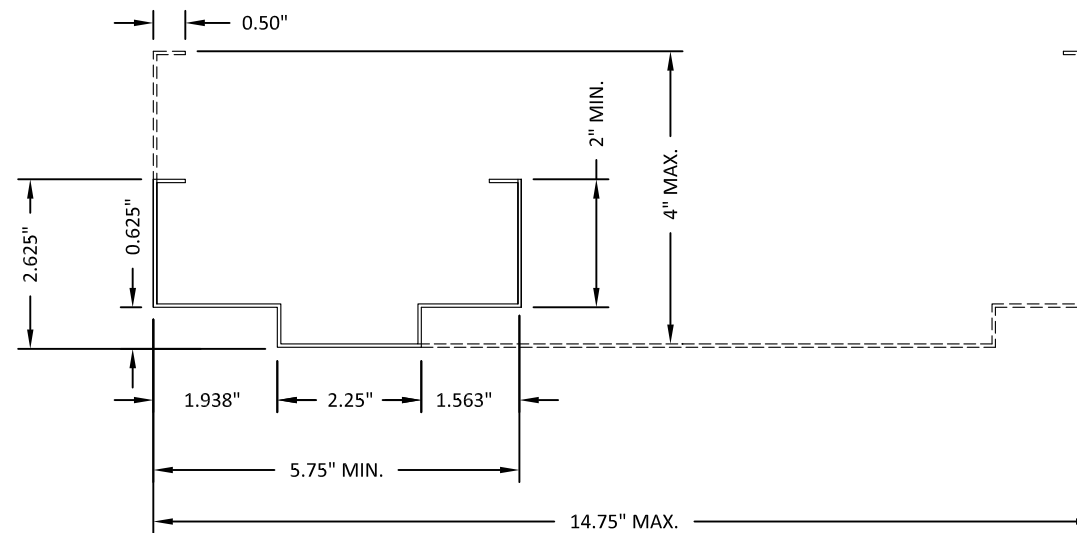


4/24/2023 11:53 AM  
s:\projects\mesker mbm, llc\fb-23-0112 - fbc submittal - commercial steel doors revisions\dwg\115544\mdi002.dwg

**BILL OF MATERIALS**

ITEM #	DESCRIPTION	MATERIAL
C	1/4" MAX. SHIM SPACE	-
D	1/4" X 2-3/4" ELCO OR ITW CONCRETE SCREWS	STEEL
E	MASONRY - 3000 PSI MIN. CONCRETE CONFORMING TO ACI 301 OR HOLLOW BLOCK CONFORMING TO ASTM C90	CONCRETE
H	1/4" X 1-3/4" ITW PFH CONCRETE SCREW	STEEL
I	5/16" X 1-3/4" ELCO ULTRACON CONCRETE SCREW	STEEL
J	3/8" X 5" PFH ITW DYNABOLT SLEEVE ANCHOR	STEEL
K	3/8" X 5" HLC HILTI SLEEVE ANCHOR	STEEL
L	3/8" X 5" SLEEVE ANCHOR BY POWERS FASTENERS	STEEL
M	3/8" X 5" TAPPER CONCRETE SCREW BY POWERS FASTENERS	STEEL
N	5/16" SMS OR MACHINE BOLT (MIN. GRADE 5 CRS)	STEEL
O	3/8" X 5" WEDGE BOLT CONCRETE SCREW BY POWERS FASTENERS	STEEL
1	"N" STEEL DOOR PANEL - UNDER SEPERATE APPROVAL	-
2	DOOR SKIN - UNDER SEPERATE APPROVAL	-
3	FOAM 1.0 PCF MIN. DENSITY	POLYSTYRENE
4	DOOR TOP & BOTTOM CLOSER	STEEL
6	CLOSER REINFORCEMENT	STEEL
8	#12-24 X 1/2" SELF TAPPER	STEEL
9	TUBE ANCHOR (PF-10)	STEEL
10	#12-24 X 1" COMBINATION MACHINE / WOOD SCREW	STEEL
12	MULLION Z BRACKET	STEEL
15	MULLION MIN. (0.056" THK) BY MESKER	STEEL
16	ANSI LATCH STRIKE	STEEL
17	DEADBOLT STRIKE	STEEL
19	DEADBOLT STRIKE REINFORCEMENT	STEEL
20	WEATHERSTRIP (PEMKO S-88)	NEOPRENE
21	4-1/2" X 4-1/2" X 0.125" TEMPLATE HINGE	STEEL
22	STANDARD (LONG) DOOR HINGE TOP HINGE REINFORCEMENT	STEEL
23	STANDARD (SHORT) DOOR HINGE MIDDLE BOTTOM HINGE REINF.	STEEL
25	HOLLOW METAL FRAME - 16GA (0.053" THK.) BY MESKER	STEEL
27	LATCH STRIKE REINFORCEMENT	STEEL
28	FRAME HINGE REINFORCEMENT	STEEL
29	HOLLOW METAL FRAME SILL	STEEL
30	MASONRY 'TEE' ANCHOR (MESKER PFMT5)	STEEL
31	STRAP ANCHOR (PS-241)	STEEL
33	Z ANCHOR (PF-9)	STEEL
34	WOOD STUD ANCHOR (F-24)	STEEL
35	WIRE ANCHOR (PF-2)	STEEL

ITEM #	DESCRIPTION	MATERIAL
46	#6 X 3/4" PHILIPS HEAD SMS	STEEL
53	U-CHANNEL GLASS STOP	STEEL
54	#8 X 1.25" PFH SHEET METAL SCREW - 7" O.C. TYP.	STEEL
79	WEATHER-STRIP	FOAM
81	DOW 995 STRUCTURAL SILICONE	SILICONE
83	SILL TUBE ANCHOR	STEEL
84	MULLION REINFORCEMENT	STEEL



**25 HOLLOW METAL FRAME**



MESKER MBM, LLC  
3440 Standwood Blvd.  
Huntsville, AL 35811  
PH: (256) 851-6670

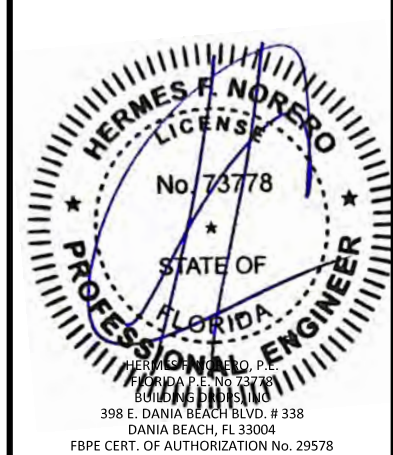
TITLE: "N" SERIES COMMERCIAL OUTSWING  
STEEL DOOR TRANSOMS AND SIDELITES  
(HVHZ) (IMPACT)  
BILL OF MATERIALS  
& COMPONENTS

PREPARED BY:  
**BUILDING DROPS, INC.**  
398 E. DANIA BEACH BLVD., STE. 338  
DANIA BEACH, FL 33004  
PH: (954) 399-8478  
FAX: (954) 744-4738  
WEB: www.buildingdrops.com



REMARKS	BY	DATE
2020 FBC UPDATE	NUS	08/13/20
2023 NAME CHANGE	MG	03/06/23

THE INSTALLATION DETAILS DESCRIBED HEREIN ARE GENERIC AND MAY NOT REFLECT ACTUAL CONDITIONS FOR A SPECIFIC SITE. IF SITE CONDITIONS CAUSE INSTALLATION TO DEVIATE FROM THE REQUIREMENTS DETAILED HEREIN, A LICENSED ENGINEER OR ARCHITECT SHALL PREPARE SITE SPECIFIC DOCUMENTS FOR USE WITH THIS DOCUMENT.



FL #:	<b>FL15544</b>
DATE:	<b>06/03/16</b>
DWG. BY:	<b>LS</b>
CHK. BY:	<b>HFN</b>
SCALE:	<b>NTS</b>
DWG. #:	<b>MDI002</b>
SHEET:	<b>16</b>
	<b>OF 16</b>

4/24/2023 11:53 AM  
s:\projects\mesker mbm, llc\fb\fb-23-0112 - fbc submittal - commercial steel doors revisions\dwgs\fl15544\md002.dwg