

REVISIONS			
REV	DESCRIPTION	DATE	APPROVED
C	CHANGE MANUFACTURER'S NAME	03/23/2023	R.L.

NOTES:

1. THE PRODUCT SHOWN HEREIN IS DESIGNED AND MANUFACTURED TO COMPLY WITH REQUIREMENTS OF THE FLORIDA BUILDING CODE INCLUDING THE HVHZ.
2. WOOD FRAMING AND MASONRY OPENING TO BE DESIGNED AND ANCHORED TO PROPERLY TRANSFER ALL LOADS TO STRUCTURE. FRAMING AND MASONRY OPENING IS THE RESPONSIBILITY OF THE ARCHITECT OR ENGINEER OF RECORD.
3. WHERE SHIM OR BUCK THICKNESS IS LESS THAN 1-1/2" UNITS MUST BE ANCHORED THROUGH THE FRAME IN ACCORDANCE WITH MANUFACTURER'S PUBLISHED INSTALLATION INSTRUCTIONS. ANCHORS SHALL BE SECURELY FASTENED DIRECTLY INTO MASONRY, CONCRETE OR OTHER STRUCTURAL SUBSTRATE MATERIAL.
4. WHERE WOOD BUCK THICKNESS IS 1-1/2" OR GREATER, BUCK SHALL BE SECURELY FASTENED TO MASONRY, CONCRETE OR OTHER STRUCTURAL SUBSTRATE. UNITS MAY BE ANCHORED THROUGH FRAME TO SECURED WOOD BUCK IN ACCORDANCE WITH MANUFACTURER'S PUBLISHED INSTALLATION INSTRUCTIONS.
5. WHERE 1X BUCK IS NOT USED DISSIMILAR MATERIALS MUST BE SEPARATED WITH APPROVED COATING OR MEMBRANE. SELECTION OF COATING OR MEMBRANE IS THE RESPONSIBILITY OF THE ARCHITECT OR ENGINEER OF RECORD.
6. BUCKS SHALL EXTEND BEYOND UNIT FRAME INTERIOR FACE SO THAT FULL FRAME SUPPORT IS PROVIDED.
7. SHIM AS REQUIRED AT EACH ANCHOR LOCATION WITH LOAD BEARING SHIM. SHIM WHERE SPACE OF 1/16" OR GREATER OCCURS. MAXIMUM ALLOWABLE SHIM STACK TO BE 1/4".
8. SHIMS SHALL BE LOCATED, APPLIED AND MADE FROM MATERIALS AND THICKNESS CAPABLE OF SUSTAINING APPLICABLE LOADS.
9. WIND LOAD DURATION FACTOR Cd=1.6 WAS USED FOR WOOD ANCHOR CALCULATIONS.
10. FRAME MATERIAL: 6063-T5 ALUMINUM.
11. UNITS MUST BE GLAZED PER ASTM E1300, SEE SHEET 5 FOR GLASS DETAILS.
12. APPROVED IMPACT PROTECTIVE SYSTEM IS NOT REQUIRED FOR THIS PRODUCT IN WIND BORNE DEBRIS REGIONS.
13. FOR ANCHORING HEAD AND JAMBS INTO WOOD FRAMING OR 2X BUCK USE #14 WOOD SCREWS WITH SUFFICIENT LENGTH TO ACHIEVE A 1 3/4" MINIMUM EMBEDMENT INTO SUBSTRATE. LOCATE ANCHORS AS SHOWN IN ELEVATIONS AND INSTALLATION DETAILS.

14. FOR ANCHORING HEAD AND JAMBS INTO MASONRY/CONCRETE USE 1/4" ELCO ULTRACON TAPCONS WITH SUFFICIENT LENGTH TO ACHIEVE A 1 1/4" MINIMUM EMBEDMENT INTO SUBSTRATE WITH 2" MINIMUM EDGE DISTANCE. LOCATE ANCHORS AS SHOWN IN ELEVATIONS AND INSTALLATION DETAILS.
15. FOR ANCHORING HEAD AND JAMBS INTO METAL STRUCTURE USE #14 SMS OR SELF DRILLING SCREWS WITH SUFFICIENT LENGTH TO ACHIEVE 3 THREADS MINIMUM BEYOND STRUCTURE INTERIOR WALL. LOCATE ANCHORS AS SHOWN IN ELEVATIONS AND INSTALLATION DETAILS.
16. FOR ANCHORING SILL INTO WOOD FRAMING OR 2X BUCK USE 3/8" LAG SCREWS WITH SUFFICIENT LENGTH TO ACHIEVE A 1 7/8" MINIMUM EMBEDMENT INTO SUBSTRATE. LOCATE ANCHORS AS SHOWN IN ELEVATIONS AND INSTALLATION DETAILS.
17. FOR ANCHORING WATER THRESHOLD INTO CONCRETE/MASONRY USE 3/8" POWER BOLT ANCHORS WITH SUFFICIENT LENGTH TO ACHIEVE A 2" MINIMUM EMBEDMENT INTO SUBSTRATE WITH 4 1/2" MINIMUM EDGE DISTANCE. LOCATE ANCHORS AS SHOWN IN ELEVATIONS AND INSTALLATION DETAILS.
18. FOR ANCHORING SILL INTO METAL STRUCTURE USE 3/8" SMS OR SELF DRILLING SCREWS WITH SUFFICIENT LENGTH TO ACHIEVE 3 THREADS MINIMUM BEYOND STRUCTURE INTERIOR WALL. LOCATE ANCHORS AS SHOWN IN ELEVATIONS AND INSTALLATION DETAILS.
19. ALL FASTENERS TO BE CORROSION RESISTANT.
20. INSTALLATION ANCHORS SHALL BE INSTALLED IN ACCORDANCE WITH ANCHOR MANUFACTURER'S INSTALLATION INSTRUCTIONS AND ANCHORS SHALL NOT BE USED IN SUBSTRATES WITH STRENGTHS LESS THAN THE MINIMUM STRENGTH SPECIFIED BELOW:
 - A. WOOD: MINIMUM SPECIFIC GRAVITY OF G=0.42
 - B. CONCRETE: MINIMUM COMPRESSIVE STRENGTH OF 2,000 PSI.
 - C. MASONRY: HOLLOW FILLED BLOCK PER ASTM C90 WITH Fm=2,000PSI MINIMUM.
 - D. METAL STRUCTURE: STEEL 18GA (.048") FY=33KSI/FU=52KSI OR ALUMINUM 6063-T5 FU=30KSI .125" THICK MINIMUM
23. THIS SYSTEM IS FIELD GLAZED AND ASSEMBLED. CONTRACTOR/GLAZIER IS RESPONSIBLE FOR COMPLYING WITH GLAZING AND ASSEMBLY REQUIREMENTS.
24. ALL DISSIMILAR MATERIALS MUST BE SEPARATED PER STANDARD INSTALLATION PRACTICES.

TABLE OF CONTENTS	
SHEET NO.	DESCRIPTION
1	NOTES
2	ELEVATIONS
3	ADDITIONAL APPROVED CONFIGURATIONS
4	ANCHORING LAYOUT AND NOTES
5	BILL OF MATERIALS AND GLAZING DETAILS
6 - 7	CROSS SECTIONS
8 - 11	INSTALLATION DETAILS
12 - 14	COMPONENTS
15	PANEL AND FRAME ASSEMBLY DETAILS

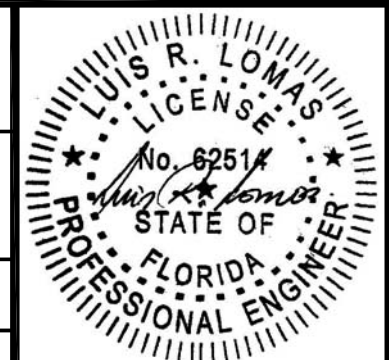
US ALUMINUM
950 SOLON RD.
WAXAHACHIE, TX 75165

SERIES IG500/IG600 STORM FRONT OS ALUMINUM
STOREFRONT DOOR SYSTEM - LMI
NOTES

DRAWN: AP	DWG NO. 08-01575	REV C
SCALE NTS	DATE 06/12/12	SHEET 1 OF 15

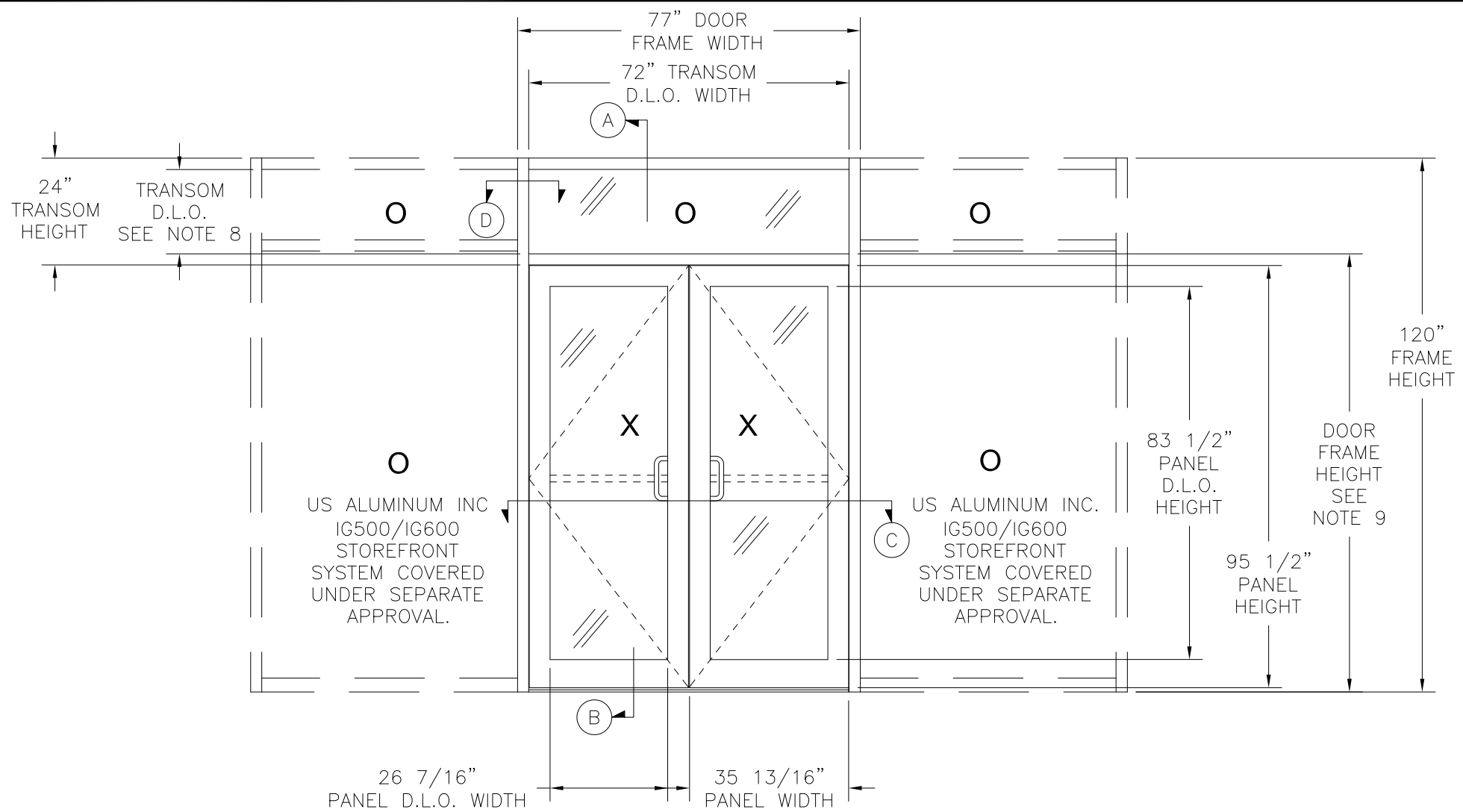
L. ROBERTO LOMAS P.E.
400 S. PALM AVE, INDIALANTIC, FL 32903
434-688-0609 rllomas@rlomaspe.com

SIGNED: 03/23/2023



Luis R. Lomas P.E.
FL No.: 62514

REVISIONS			
REV	DESCRIPTION	DATE	APPROVED
C	CHANGE MANUFACTURER'S NAME	03/23/2023	R.L.



NOTES:

- DOORS MAY BE LEFT HAND OUTSWING OR RIGHT HAND OUTSWING.
- TRANSOM D.L.O.:
SERIES IG500: 18 1/16"
SERIES IG600: 19"
- MAXIMUM DOOR FRAME HEIGHT:
SERIES IG500: 99 7/16"
SERIES IG600: 98 1/2"
- HINGE LOCATIONS FROM BOTTOM OF PANEL UP TO BOTTOM OF HINGE:
FIRST HINGE: 6"
SECOND HINGE: 45 1/2"
THIRD HINGE: 84 15/16"

**SERIES IG500/IG600 STORM FRONT OS ALUMINUM STOREFRONT
DOUBLE DOOR WITH TRANSOM
EXTERIOR VIEW**

UNITS INSTALLED WITH WATER THRESHOLD, ITEMS #5 AND #6

DESIGN PRESSURE RATING	IMPACT RATING
±65PSF	LARGE MISSILE IMPACT

UNITS INSTALLED WITH AIR SILL, ITEM #7

DESIGN PRESSURE RATING	IMPACT RATING
±65PSF	LARGE MISSILE IMPACT
THIS SYSTEM WAS NOT TESTED FOR WATER INFILTRATION AND IS TO BE INSTALLED ONLY WHERE THE WATER REQUIREMENT IS NOT NEEDED	

Design pressure chart (PSF)

Panel Height (in)	Single Panel Width (in)					
	24.00		30.00		35.75	
	Pos	Neg	Pos	Neg	Pos	Neg
80.00	65.0	65.0	65.0	65.0	65.0	65.0
84.00	65.0	65.0	65.0	65.0	65.0	65.0
90.00	65.0	65.0	65.0	65.0	65.0	65.0
95.50	65.0	65.0	65.0	65.0	65.0	65.0

REFER TO RATING BOXES FOR WATER LIMITATIONS.

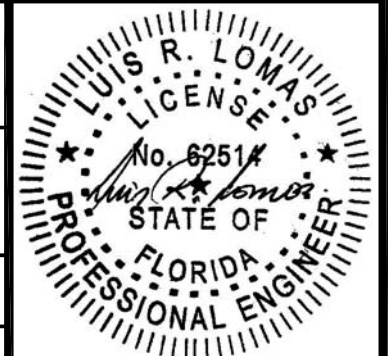
SIGNED: 03/23/2023

US ALUMINUM
950 SOLON RD.
WAXAHACHIE, TX 75165

SERIES IG500/IG600 STORM FRONT OS ALUMINUM STOREFRONT DOOR SYSTEM – LMI ELEVATION

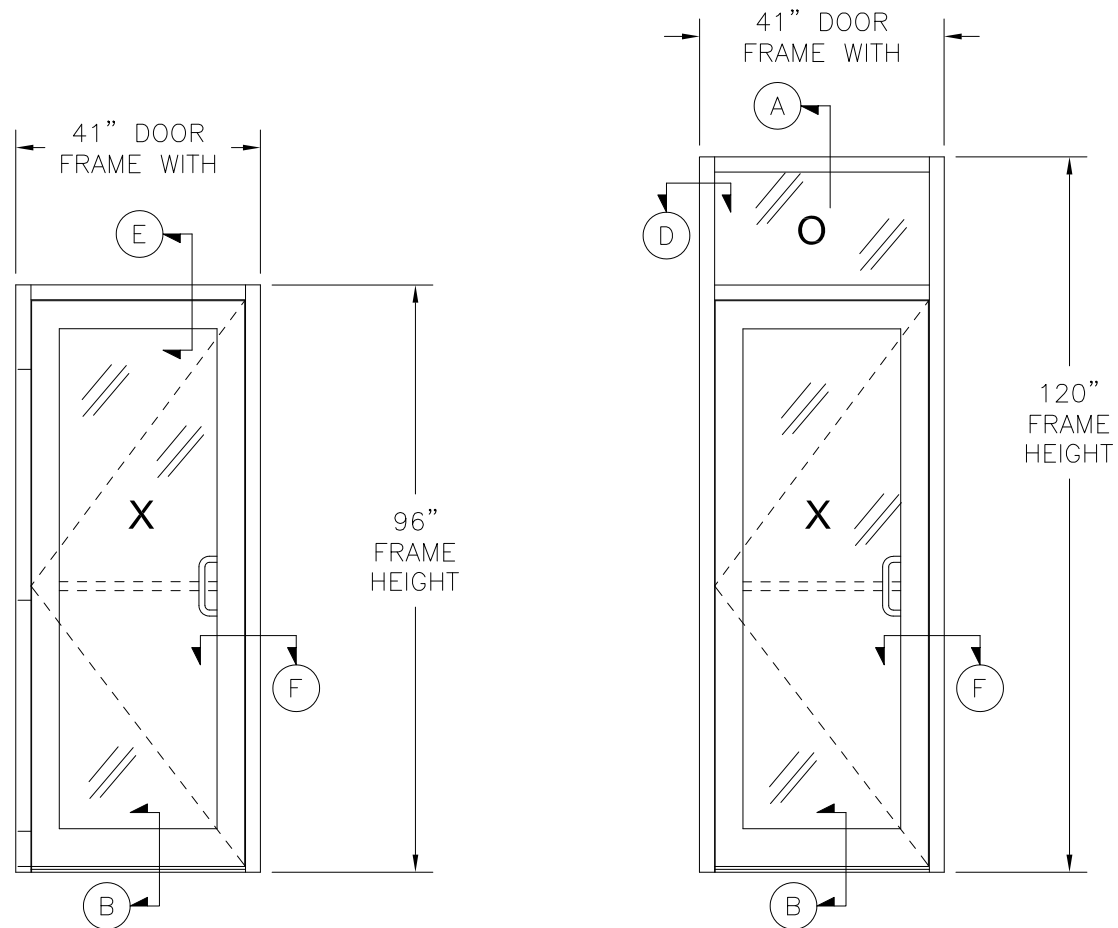
DRAWN: AP	DWG NO. 08-01575	REV C
SCALE NTS	DATE 06/12/12	SHEET 2 OF 15

L. ROBERTO LOMAS P.E.
400 S. PALM AVE, INDIALANTIC, FL 32903
434-688-0609 rllomas@rlomaspe.com



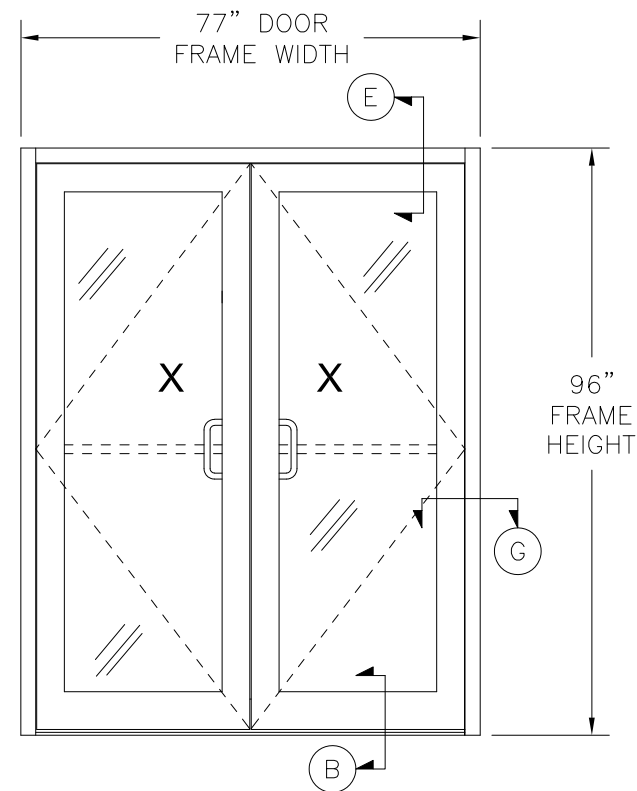
Luis R. Lomas P.E.
FL No.: 62514

REVISIONS			
REV	DESCRIPTION	DATE	APPROVED
C	CHANGE MANUFACTURER'S NAME	03/23/2023	R.L.

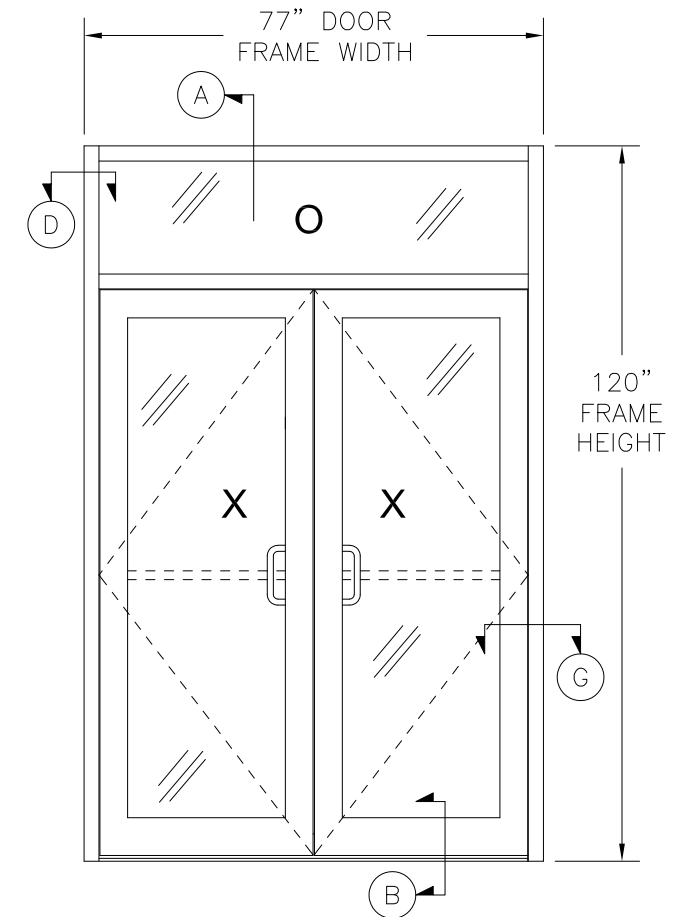


SINGLE

SINGLE W/TRANSOM



DOUBLE



DOUBLE W/TRANSOM

HARDWARE SCHEDULE	
HINGING METHOD	PUSH / PULLS
HAGER BUTT HINGE	STANDARD PUSH BAR
DH299 GEAR HINGE PEMKO	STANDARD PULL HANDLE
DH022 OFFSET PIVOTS	ROCKWOOD PUSH/PULL BX15745

LOCKS / EXIT DEVICES	CLOSERS
USAL SIX PIN CYLINDER AND CYLINDER RING	CRL 045 SMC
USAL THUMB TURN	JACKSON 20-330 OHCC
USAL FLUSH BOLTS	LCN4111 SMOOTHIE SMC
JACKSON 1285 CVR PANIC	LCN1461 SMC
JACKSON 2086 CVR PANIC	LCN 2030 OHCC
IVES FLUSH BOLTS	LCN 4040 SUPER SMOOTHIE SMC
ADAMS RITE 1850	DORMA 650 SMC
ADAMS RITE 1880	DORMA 650 PAFHO SMC
ADAMSRITE G86 CVR PANIC	
AHT CVR PANIC	

SIGNED: 03/23/2023

US ALUMINUM
950 SOLON RD.
WAXAHACHIE, TX 75165

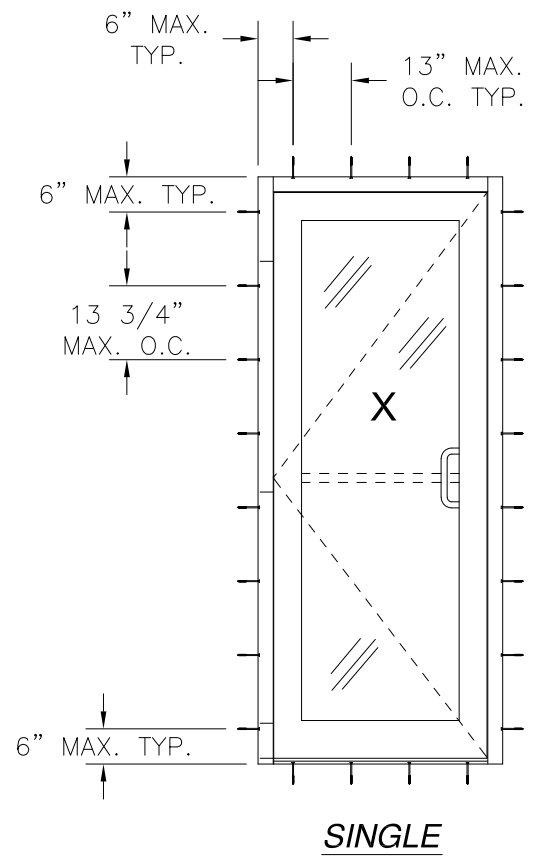
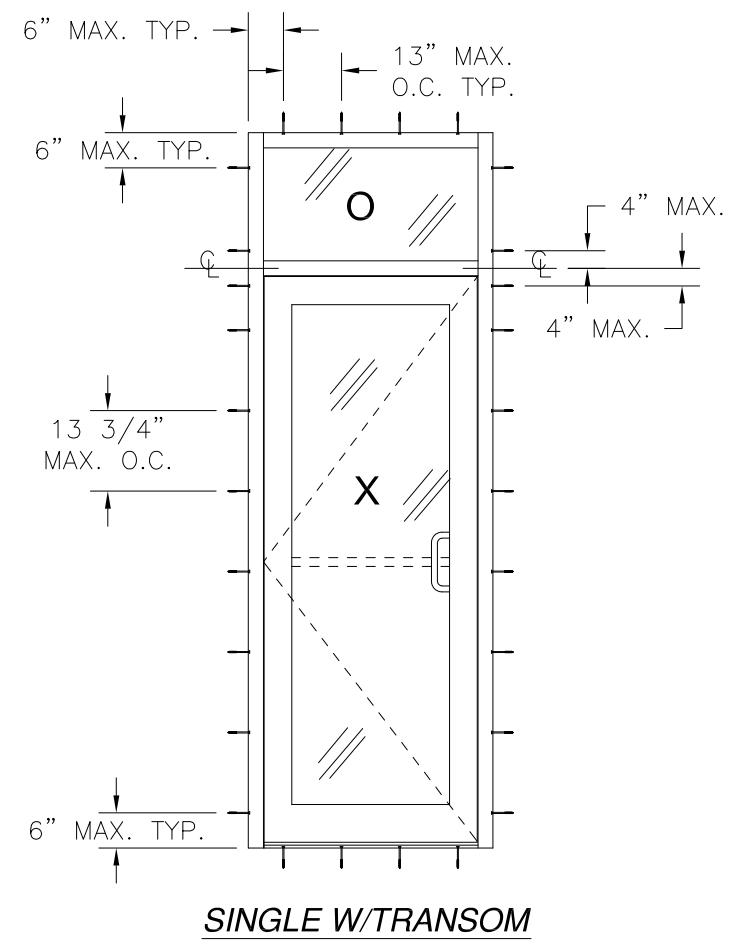
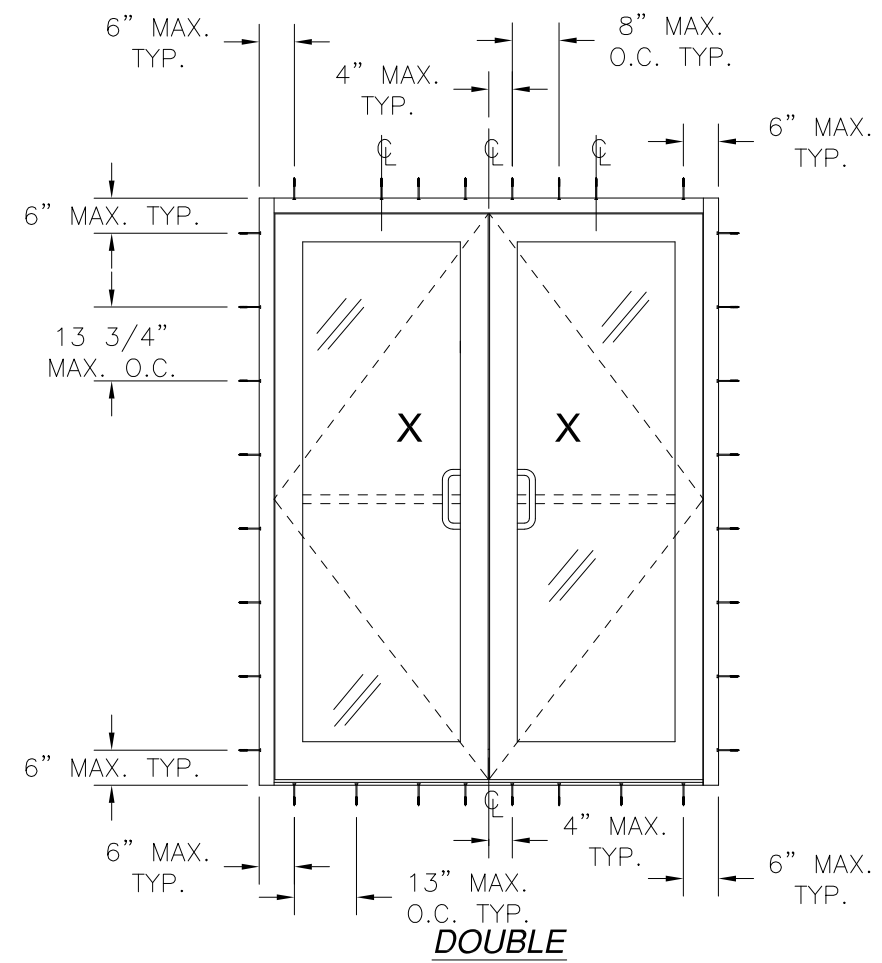
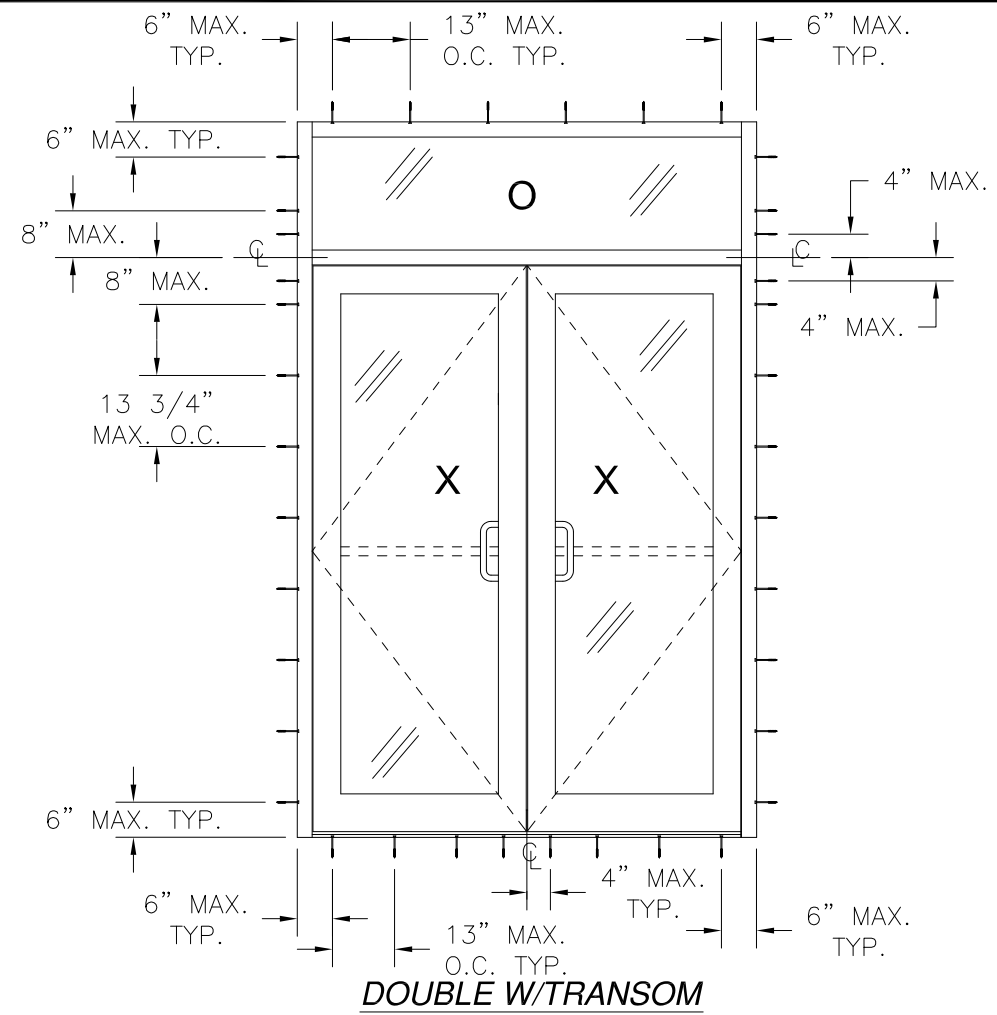
SERIES IG500/IG600 STORM FRONT OS ALUMINUM
STOREFRONT DOOR SYSTEM - LMI
ADDITIONAL APPROVED CONFIGURATIONS

DRAWN: AP	DWG NO. 08-01575	REV C
SCALE NTS	DATE 06/12/12	SHEET 3 OF 15

L. ROBERTO LOMAS P.E.
400 S. PALM AVE, INDIALANTIC, FL 32903
434-688-0609 rllomas@lrlomaspe.com



Luis R. Lomas P.E.
FL No.: 62514



REVISIONS			
REV	DESCRIPTION	DATE	APPROVED
C	CHANGE MANUFACTURER'S NAME	03/23/2023	R.L.

US ALUMINUM
950 SOLON RD.
WAXAHACHIE, TX 75165

SERIES IG500/IG600 STORM FRONT OS ALUMINUM
STOREFRONT DOOR SYSTEM - LMI
ANCHORING LAYOUTS

DRAWN: AP	DWG NO. 08-01575	REV C
SCALE NTS	DATE 06/12/12	SHEET 4 OF 15

L. ROBERTO LOMAS P.E.
400 S. PALM AVE, INDIALANTIC, FL 32903
434-688-0609 rllomas@lrlomaspe.com

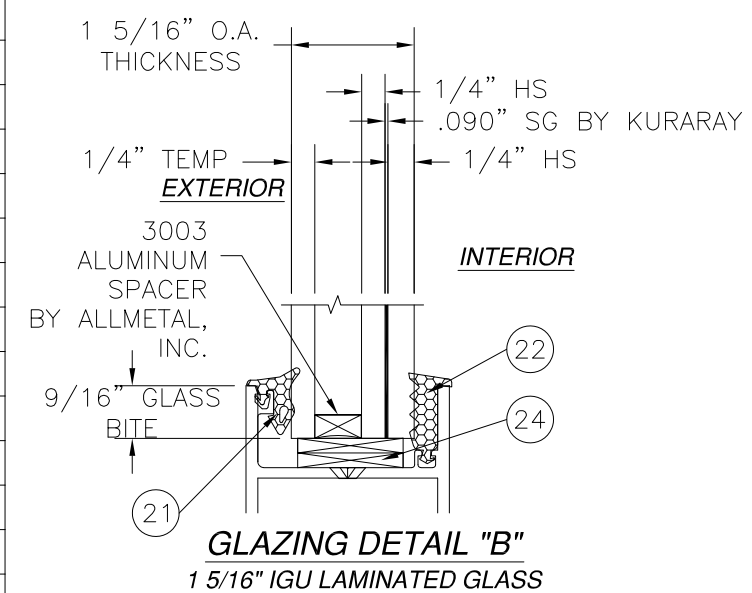
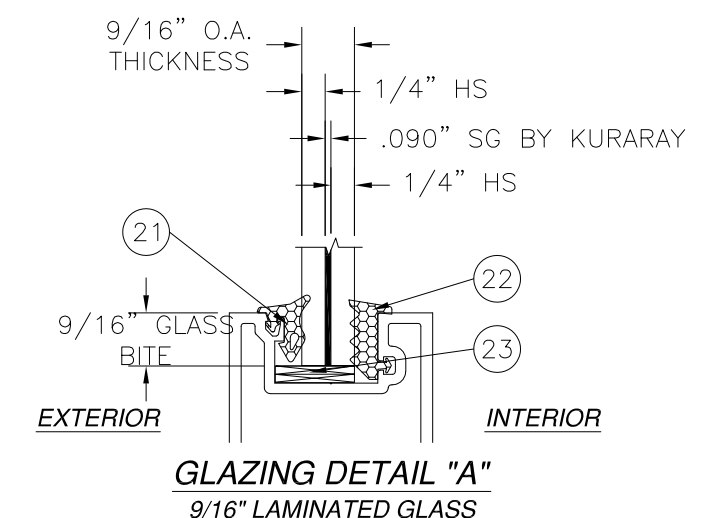
SIGNED: 03/23/2023

Luis R. Lomas P.E.
FL No.: 62514

PARTS LIST				
NO.	PART NUMBER	DESCRIPTION	MANUFACTURER	MATERIAL
1	IG526	MAIN FRAME - 9/16" GLASS	US ALUMINUM	ALUMINUM 6063-T5
2	IG626	MAIN FRAME - 1 5/16" GLASS	US ALUMINUM	ALUMINUM 6063-T5
3	IG577	HORIZONTAL MULL - 9/16" GLASS	US ALUMINUM	ALUMINUM 6063-T5
4	IG677	HORIZONTAL MULL - 1 5/16" GLASS	US ALUMINUM	ALUMINUM 6063-T5
5	IG570	SUB-SILL	US ALUMINUM	ALUMINUM 6063-T5
6	TH800	WATER THRESHOLD	US ALUMINUM	ALUMINUM 6063-T5
7	TH811	AIR SILL	US ALUMINUM	ALUMINUM 6063-T5
8	IG524	FILLER VERTICAL - 9/16" GLASS	US ALUMINUM	ALUMINUM 6063-T5
9	IG624	FILLER VERTICAL - 1 5/16" GLASS	US ALUMINUM	ALUMINUM 6063-T5
10	IG563	STOP - 9/16" GLASS	US ALUMINUM	ALUMINUM 6063-T5
11	IG663	STOP - 1 5/16" GLASS	US ALUMINUM	ALUMINUM 6063-T5
12	IG100	FILLER JAMB/HEAD	US ALUMINUM	ALUMINUM 6063-T5
13	EC801	SUB-SILL END DAM	US ALUMINUM	A-245
14	IE402	TOP RAIL - 9/16" GLASS	US ALUMINUM	ALUMINUM 6063-T5
15	IE502	TOP RAIL - 1 5/16" GLASS	US ALUMINUM	ALUMINUM 6063-T5
16	IE050	DOOR GLASS STOP - 9/16" GLASS	US ALUMINUM	ALUMINUM 6063-T5
17	IE150	DOOR GLASS STOP - 1 5/16" GLASS	US ALUMINUM	ALUMINUM 6063-T5
18	IE401	BOTTOM RAIL - 9/16" GLASS	US ALUMINUM	ALUMINUM 6063-T5
19	IE501	BOTTOM RAIL - 1 5/16" GLASS	US ALUMINUM	ALUMINUM 6063-T5
20	NP801	DOOR WEATHERSTRIP	US ALUMINUM	
21	NP825	EXTERIOR GASKET	TREMCO	EDPM 70 DUROMETER
22	NP826	INTERIOR GASKET	TREMCO	EPDM SPONGE
23	SB916	SETTING BLOCK - 9/16" GLASS	US ALUMINUM	EPDM 85 DUROMETER
24	SB917	SETTING BLOCK - 1 1/4" GLASS	US ALUMINUM	EPDM 85 DUROMETER
25	ST266	#12 x 1" HWH SMS		
26	ST268	#12 x 3/4" HWH SMS		
27		LARGE MISSILE IMPACT GLASS		
28		8GA. STEEL STIFFENER HEAVY	US ALUMINUM	A36 MILD STEEL
29	WB600	W BLOCK .688" WIDE		
30	ST035	#10 x 5/8" FH SMS		
31	DOW995	SILICONE SEALANT	DOW CORNING	SILICONE
32	CB801	6 1/8" CORNER BLOCK	US ALUMINUM	
33	TH804	SILL INSERT	US ALUMINUM	ALUMINUM 6063-T5
34	D916	SETTING BLOCK	US ALUMINUM	EPDM
35	IE420	PLAIN STILE - 9/16" GLASS	US ALUMINUM	ALUMINUM 6063-T5
36	IE520	PLAIN STILE - 1 5/16" GLASS	US ALUMINUM	ALUMINUM 6063-T5
37	IG046	DOOR STOP - 9/16" GLASS	US ALUMINUM	ALUMINUM 6063-T5
38	IG146	DOOR STOP - 1 5/16" GLASS	US ALUMINUM	ALUMINUM 6063-T5
39	IG047	STOP RETAINER - 9/16" GLASS	US ALUMINUM	ALUMINUM 6063-T5
40	IG147	STOP RETAINER - 1 5/16" GLASS	US ALUMINUM	ALUMINUM 6063-T5

REVISIONS			
REV	DESCRIPTION	DATE	APPROVED
C	CHANGE MANUFACTURER'S NAME	03/23/2023	R.L.

PARTS LIST				
NO.	PART NUMBER	DESCRIPTION	MANUFACTURER	MATERIAL
41	IE450	LOCK STILE - 9/16" GLASS	US ALUMINUM	ALUMINUM 6063-T5
42	IE550	LOCK STILE - 1 5/16" GLASS	US ALUMINUM	ALUMINUM 6063-T5
43	IE460	LOCK STILE - 9/16" GLASS	US ALUMINUM	ALUMINUM 6063-T5
44	IE560	LOCK STILE - 1 5/16" GLASS	US ALUMINUM	ALUMINUM 6063-T5
45	NP802	DOOR WEATHERSTRIP	US ALUMINUM	
46	CB802	SHEAR CHANNEL	US ALUMINUM	ALUMINUM 6063-T5
47	1285	PANIC BAR	JACKSON	
48	G86	PANIC BAR	ADAMS RITE	
49	4111	CLOSER	LCN	
50	1461	SURFACE CLOSER	LCN	
51	20-330	OHCC CLOSER	JACKSON	
52	2030	OHCC CLOSER	LCN	
53	CL045	SURFACE CLOSER	CR LAWRENCE	
54		FLUSH BOLT	US ALUMINUM	
55		FLUSH BOLT	IVES	
56		STANDARD LOCK		
57		1 1/2" BUTT HINGE PAIR	HAGER	
58	CB801	2 3/8" CORNER BLOCK	US ALUMINUM	
59	ST197	#8 x 3/8" PH SMS		
60	DN350	LOCK STILE CAP	US ALUMINUM	ALUMINUM 6063-T5
61	IG200	DOOR STOP	US ALUMINUM	ALUMINUM 6063-T5
62	IG567	HORIZONTAL MULL - 9/16" GLASS	US ALUMINUM	ALUMINUM 6063-T5
63	IG667	HORIZONTAL MULL - 1 5/16" GLASS	US ALUMINUM	ALUMINUM 6063-T5
64	CB901	CORNER BLOCK	US ALUMINUM	
65		3/8" - 16 x 3" HH BOLT		
66	TC800	11GA. THRESHOLD CLIP	US ALUMINUM	COLD ROLLED STEEL
67		#12-24 x 1/4" SCREW		



SIGNED: 03/23/2023

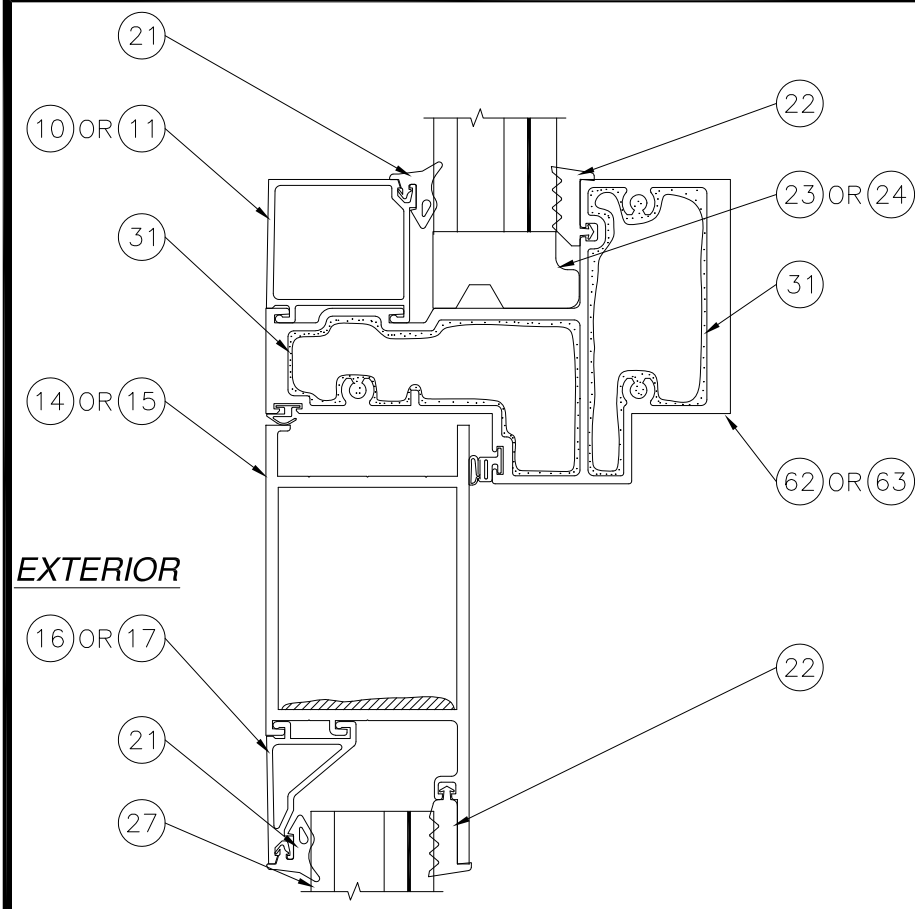
US ALUMINUM
950 SOLON RD.
WAXAHACHIE, TX 75165

SERIES IG500/IG600 STORM FRONT OS ALUMINUM
STOREFRONT DOOR SYSTEM - LMI
BILL OF MATERIALS AND GLAZING DETAILS

DRAWN: AP	DWG NO. 08-01575	REV C
SCALE NTS	DATE 06/12/12	SHEET 5 OF 15

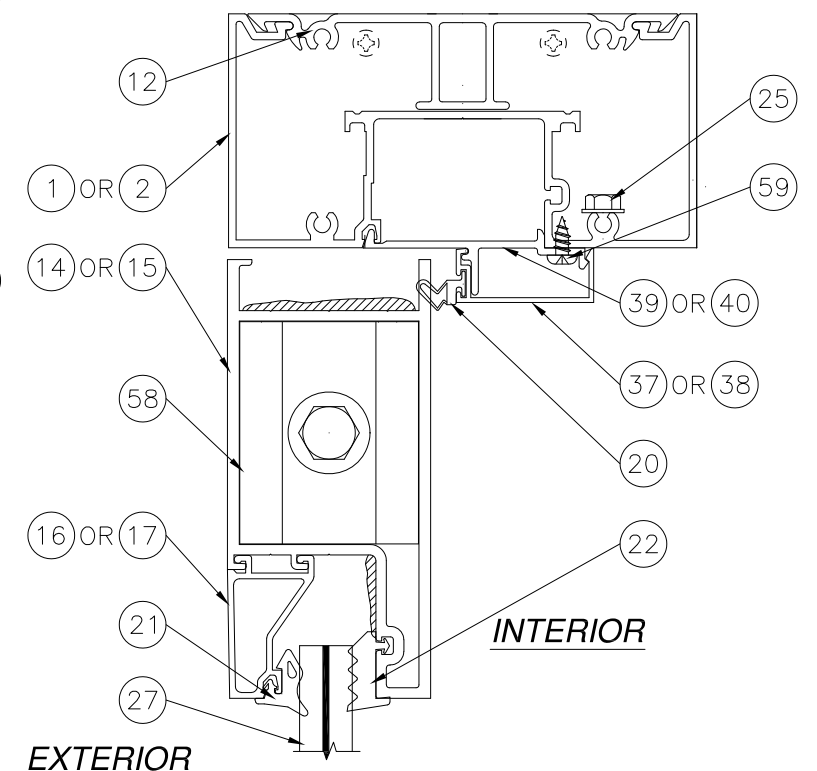
L. ROBERTO LOMAS P.E.
400 S. PALM AVE, INDIALANTIC, FL 32903
434-688-0609 rllomas@rlomaspe.com

Luis R. Lomas P.E.
FL No.: 62514



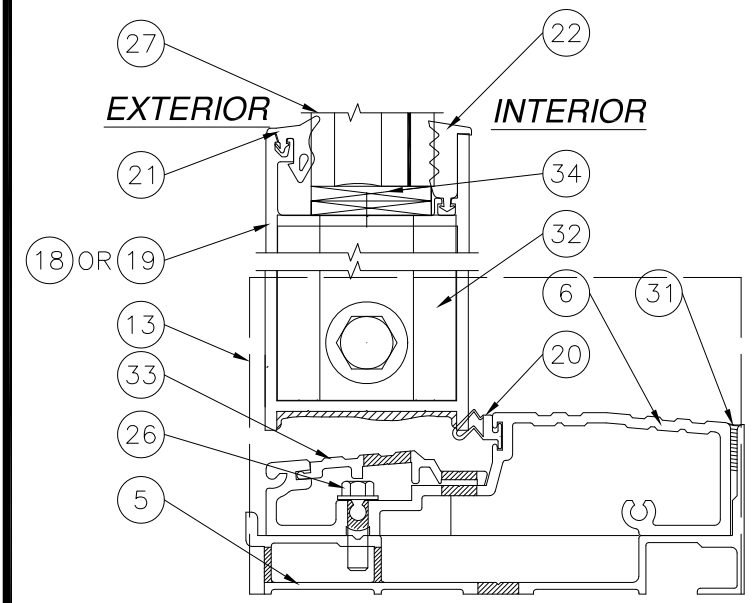
EXTERIOR

H OPTIONAL DOOR HEADER AND TRANSOM



INTERIOR

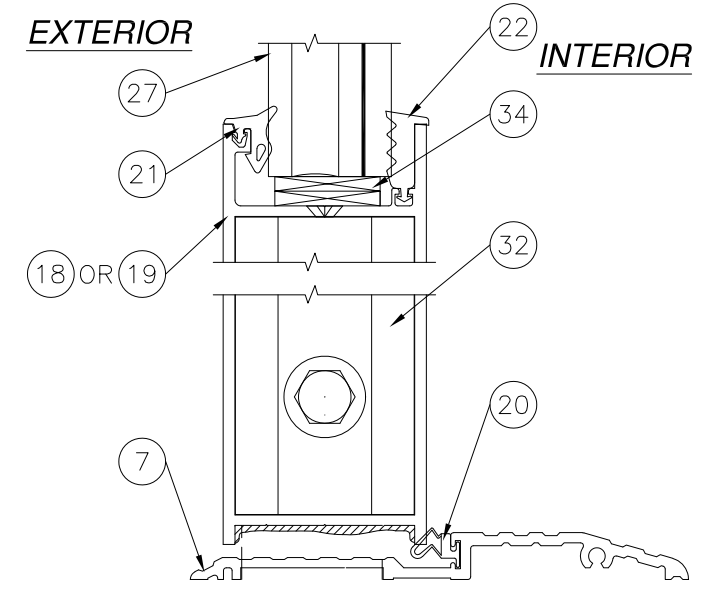
E DOOR HEADER



EXTERIOR

INTERIOR

B DOOR WITH WATER THRESHOLD



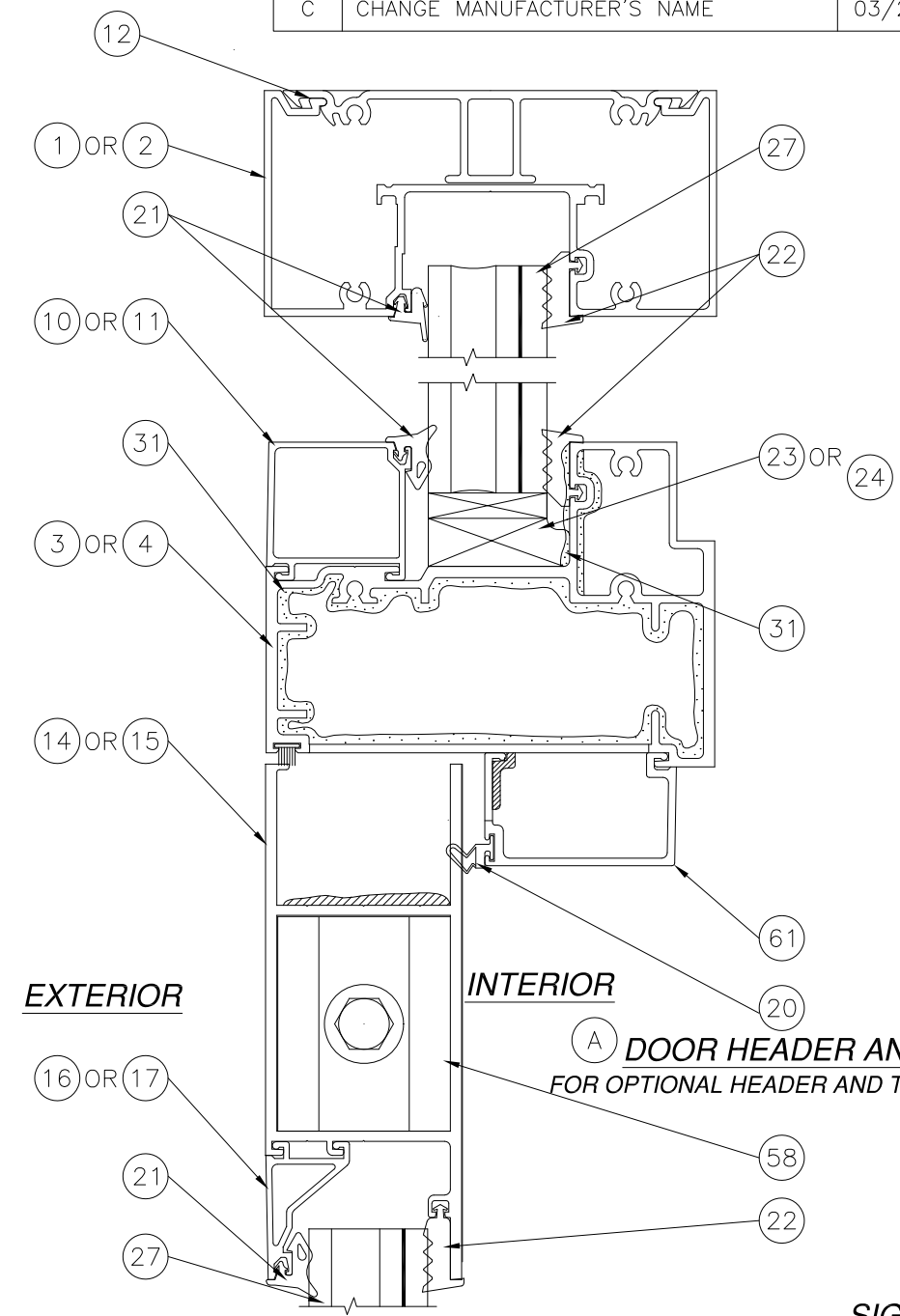
EXTERIOR

INTERIOR

B DOOR WITH AIR SILL

NOTE: FOR ANCHORING TO SUBSTRATE SEE SHEETS 7 THRU 10.

REVISIONS			
REV	DESCRIPTION	DATE	APPROVED
C	CHANGE MANUFACTURER'S NAME	03/23/2023	R.L.



EXTERIOR

INTERIOR

A DOOR HEADER AND TRANSOM
FOR OPTIONAL HEADER AND TRANSOM SEE DETAIL H

SIGNED: 03/23/2023

US ALUMINUM
950 SOLON RD.
WAXAHACHIE, TX 75165

SERIES IG500/IG600 STORM FRONT OS ALUMINUM
STOREFRONT DOOR SYSTEM - LMI
CROSS SECTIONS

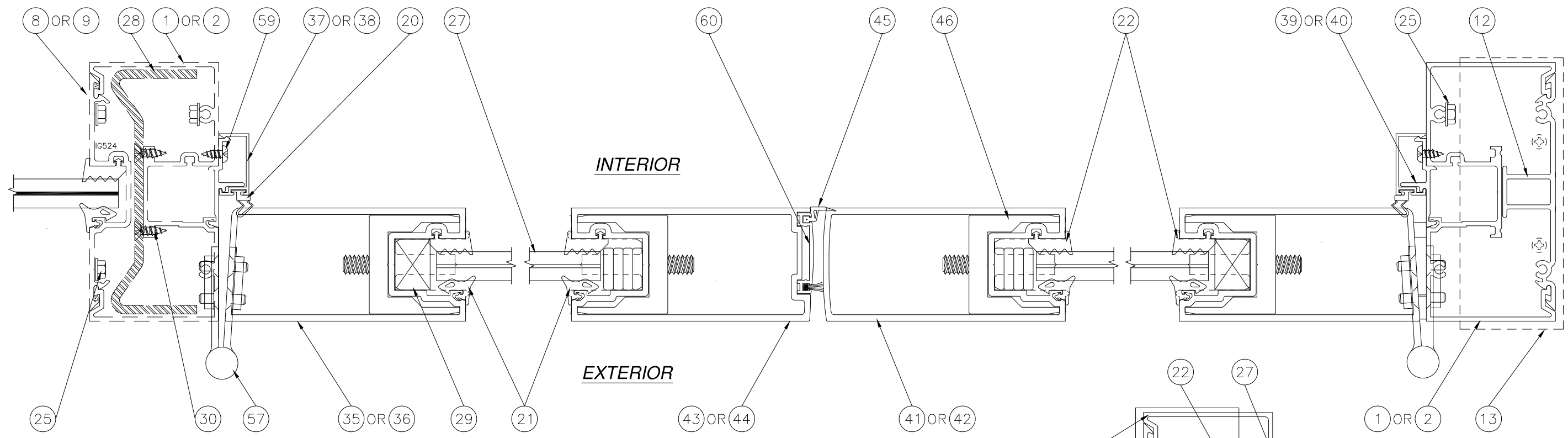
DRAWN: AP	DWG NO. 08-01575	REV C
SCALE NTS	DATE 06/12/12	SHEET 6 OF 15

L. ROBERTO LOMAS P.E.
400 S. PALM AVE, INDIALANTIC, FL 32903
434-688-0609 rllomas@rlomaspe.com



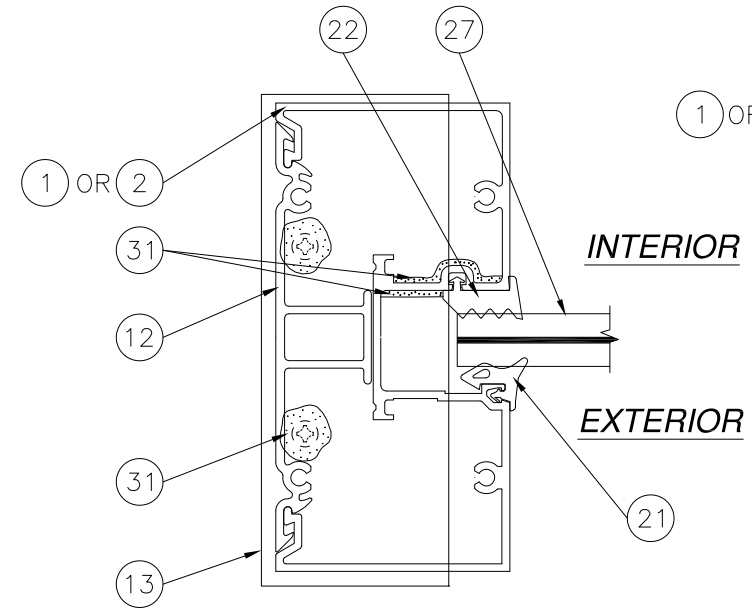
Luis R. Lomas P.E.
FL No.: 62514

REVISIONS			
REV	DESCRIPTION	DATE	APPROVED
C	CHANGE MANUFACTURER'S NAME	03/23/2023	R.L.



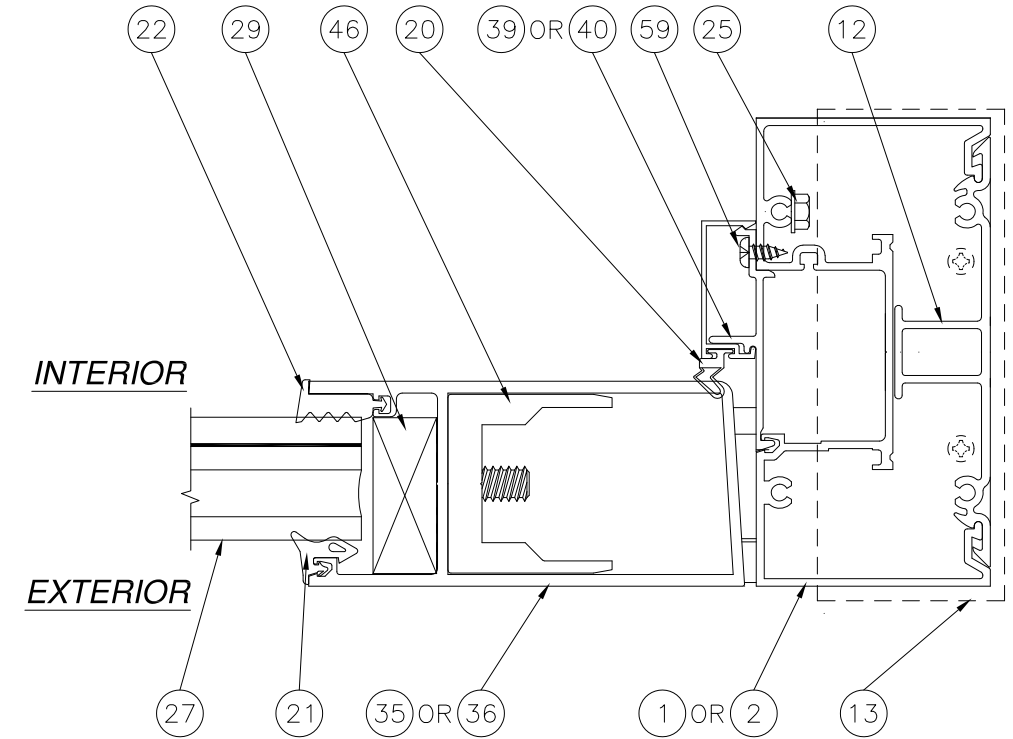
MULLION ASSEMBLY PROPERTIES
 TOTAL I_x (IN TERMS OF ALUMINUM): 16.754 in⁴
 S_x ALUMINUM: 2.115 in³
 S_x STEEL: 4.889 in³

C DOUBLE DOOR



D TRANSOM JAMB

NOTE: FOR ANCHORING TO SUBSTRATE SEE SHEETS 7 THRU 10.



F LOCK STILE TO JAMB

SIGNED: 03/23/2023

US ALUMINUM
 950 SOLON RD.
 WAXAHACHIE, TX 75165

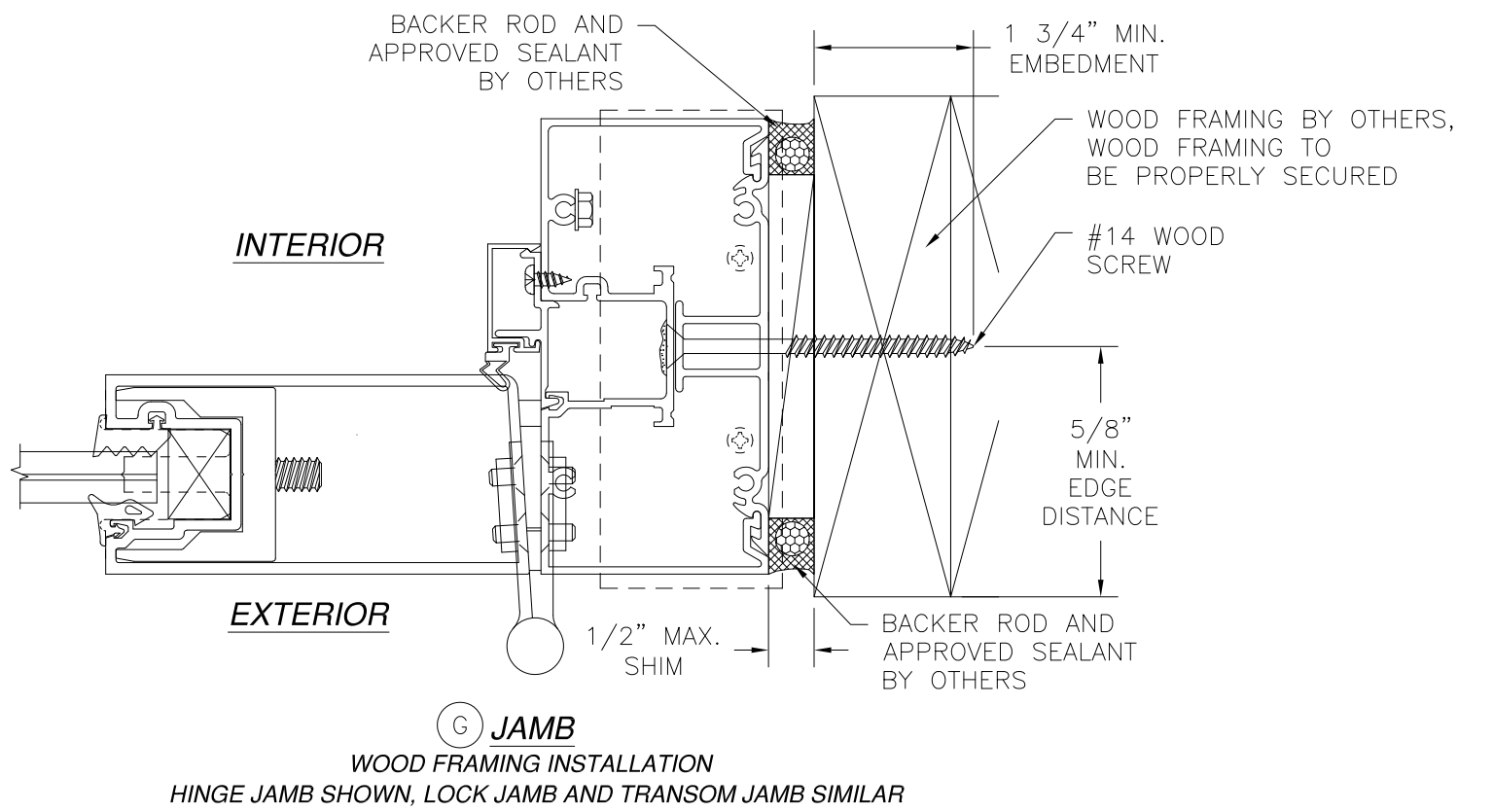
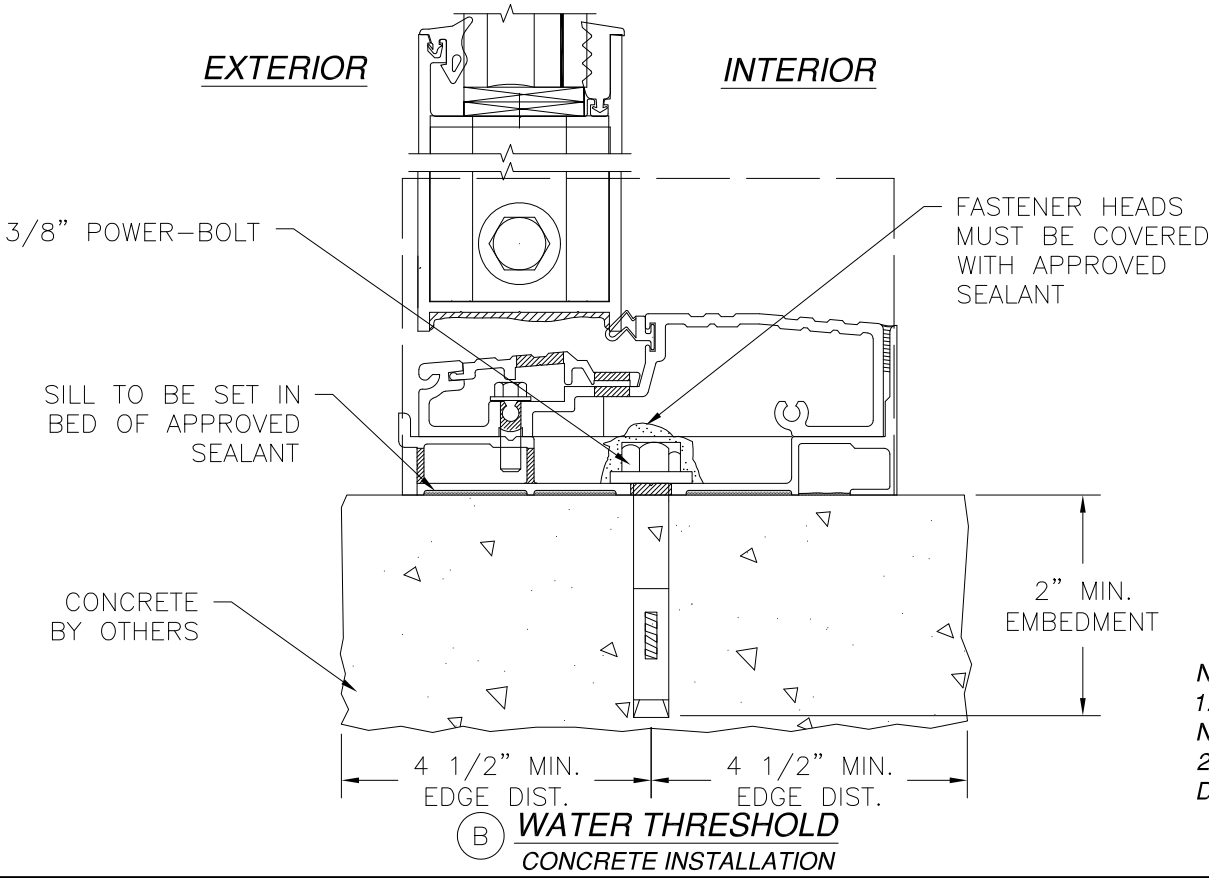
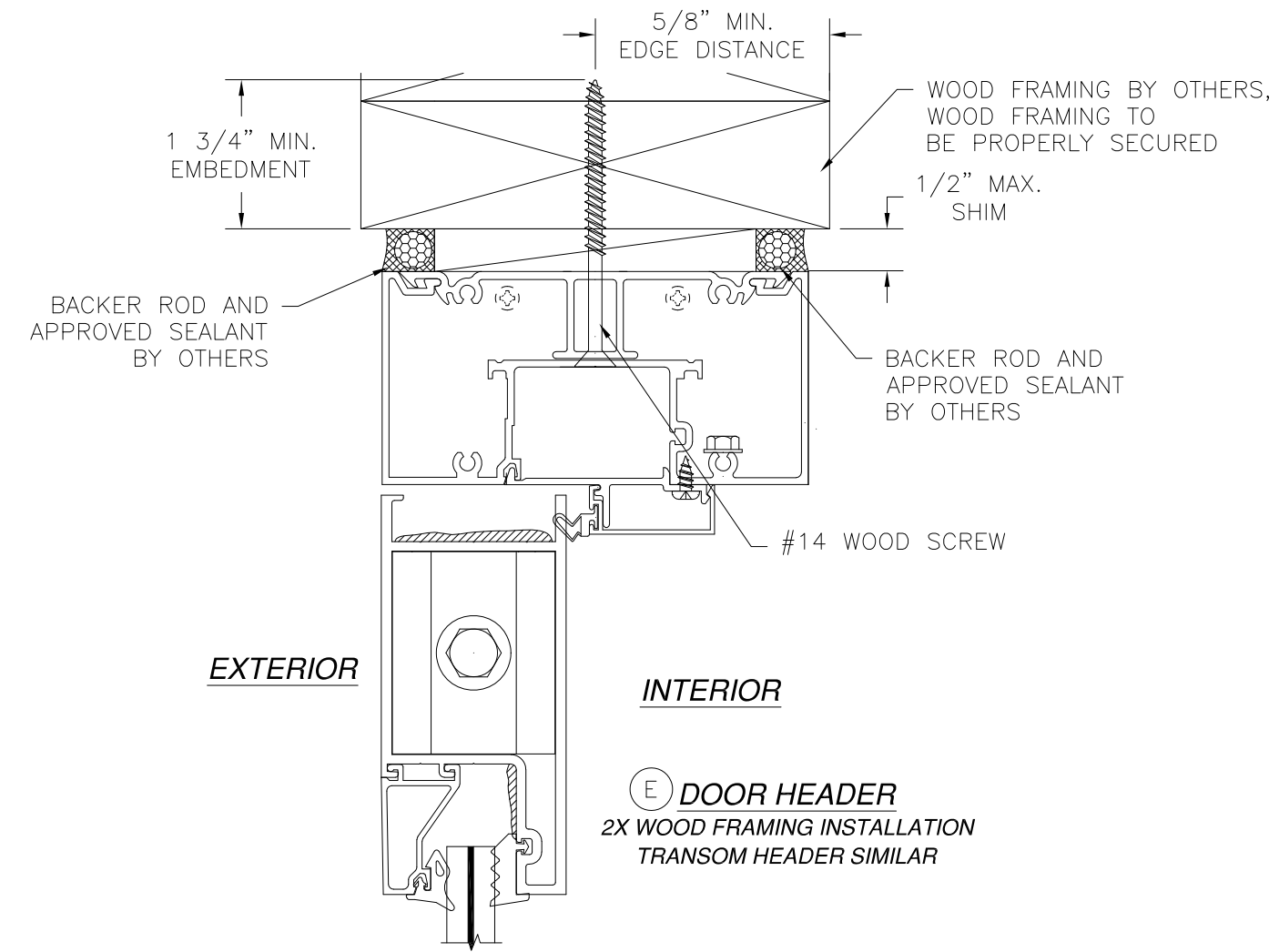
SERIES IG500/IG600 STORM FRONT OS ALUMINUM
 STOREFRONT DOOR SYSTEM - LMI
 CROSS SECTIONS

DRAWN: AP	DWG NO. 08-01575	REV C
SCALE NTS	DATE 06/12/12	SHEET 7 OF 15

L. ROBERTO LOMAS P.E.
 400 S. PALM AVE, INDIALANTIC, FL 32903
 434-688-0609 rllomas@lrlomaspe.com

Luis R. Lomas P.E.
 FL No.: 62514

REVISIONS			
REV	DESCRIPTION	DATE	APPROVED
C	CHANGE MANUFACTURER'S NAME	03/23/2023	R.L.



NOTES:
 1. INTERIOR AND EXTERIOR FINISHES, BY OTHERS, NOT SHOWN FOR CLARITY.
 2. PERIMETER AND JOINT SEALANT BY OTHERS TO BE DESIGNED IN ACCORDANCE WITH ASTM E2112

US ALUMINUM
 950 SOLON RD.
 WAXAHACHIE, TX 75165

SERIES IG500/IG600 STORM FRONT OS ALUMINUM
 STOREFRONT DOOR SYSTEM - LMI
 INSTALLATION DETAILS

DRAWN: AP	DWG NO. 08-01575	REV C
SCALE NTS	DATE 06/12/12	SHEET 8 OF 15

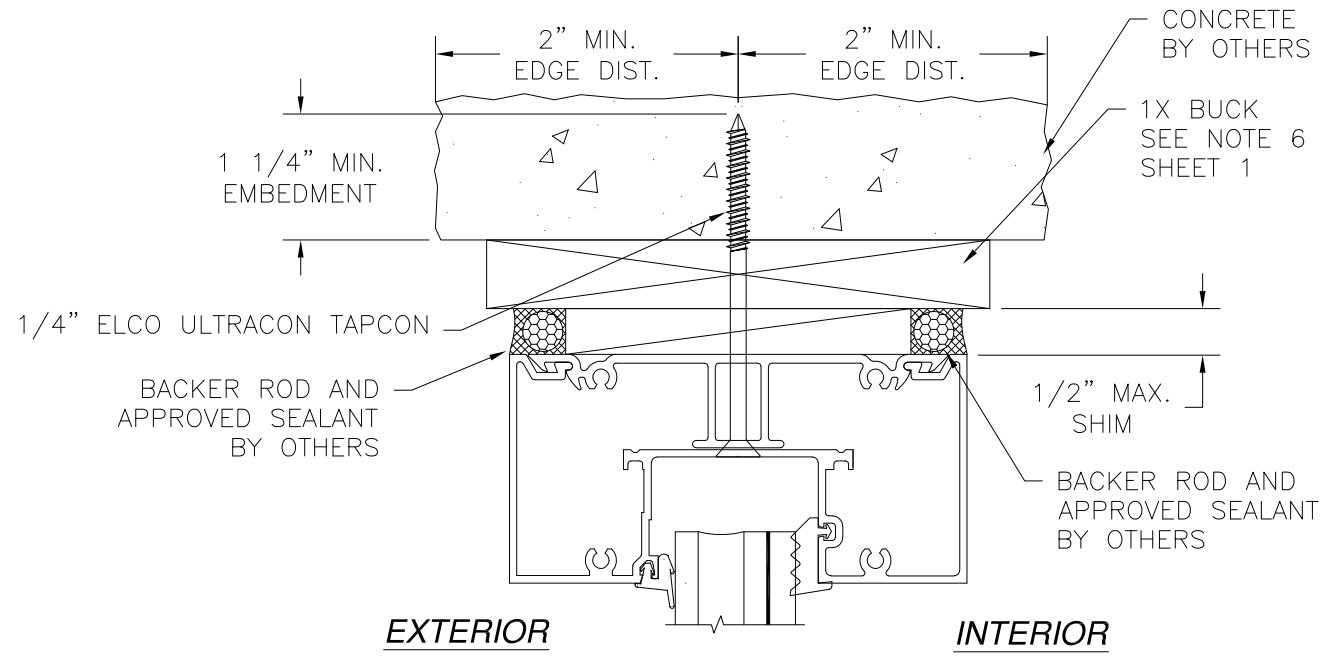
L. ROBERTO LOMAS P.E.
 400 S. PALM AVE, INDIALANTIC, FL 32903
 434-688-0609 rllomas@lrlomaspe.com

SIGNED: 03/23/2023

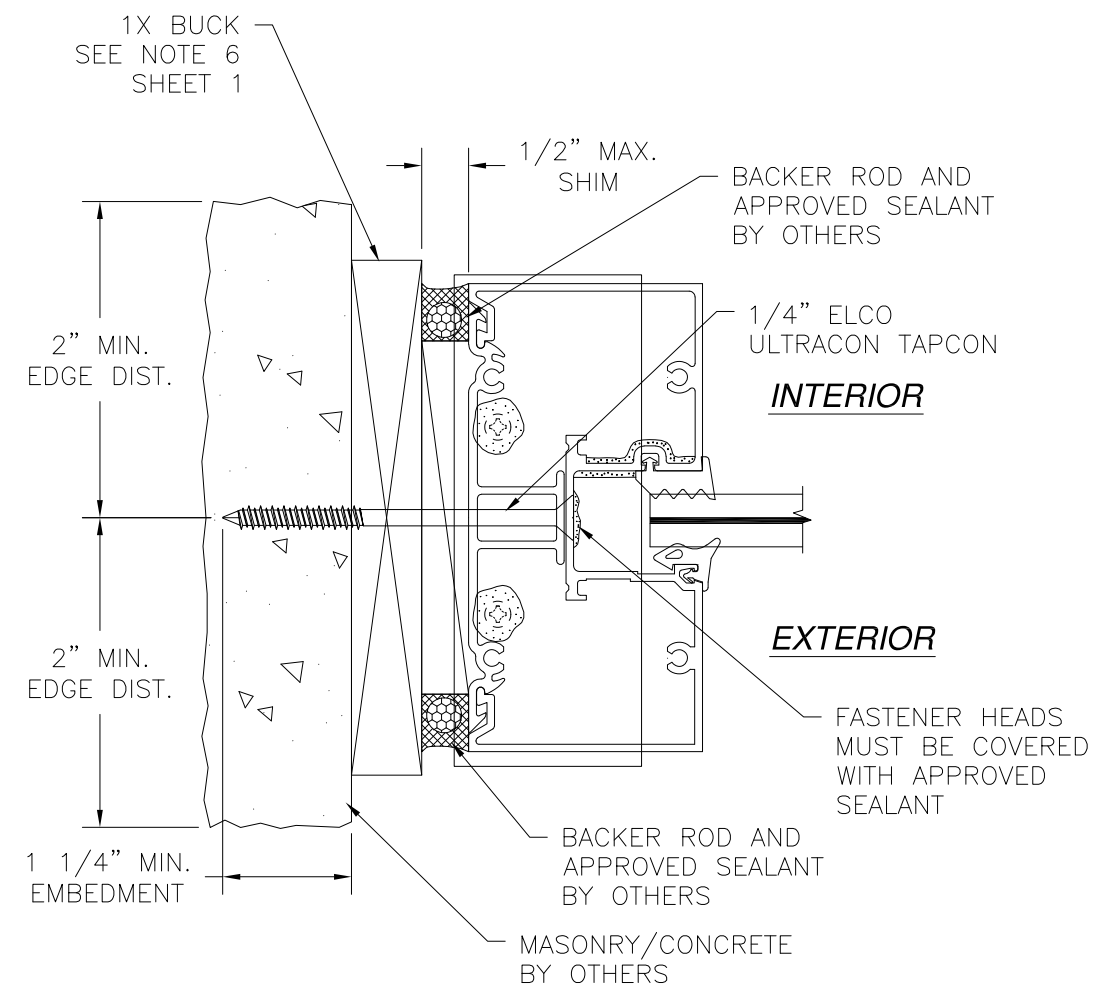


Luis R. Lomas P.E.
 FL No.: 62514

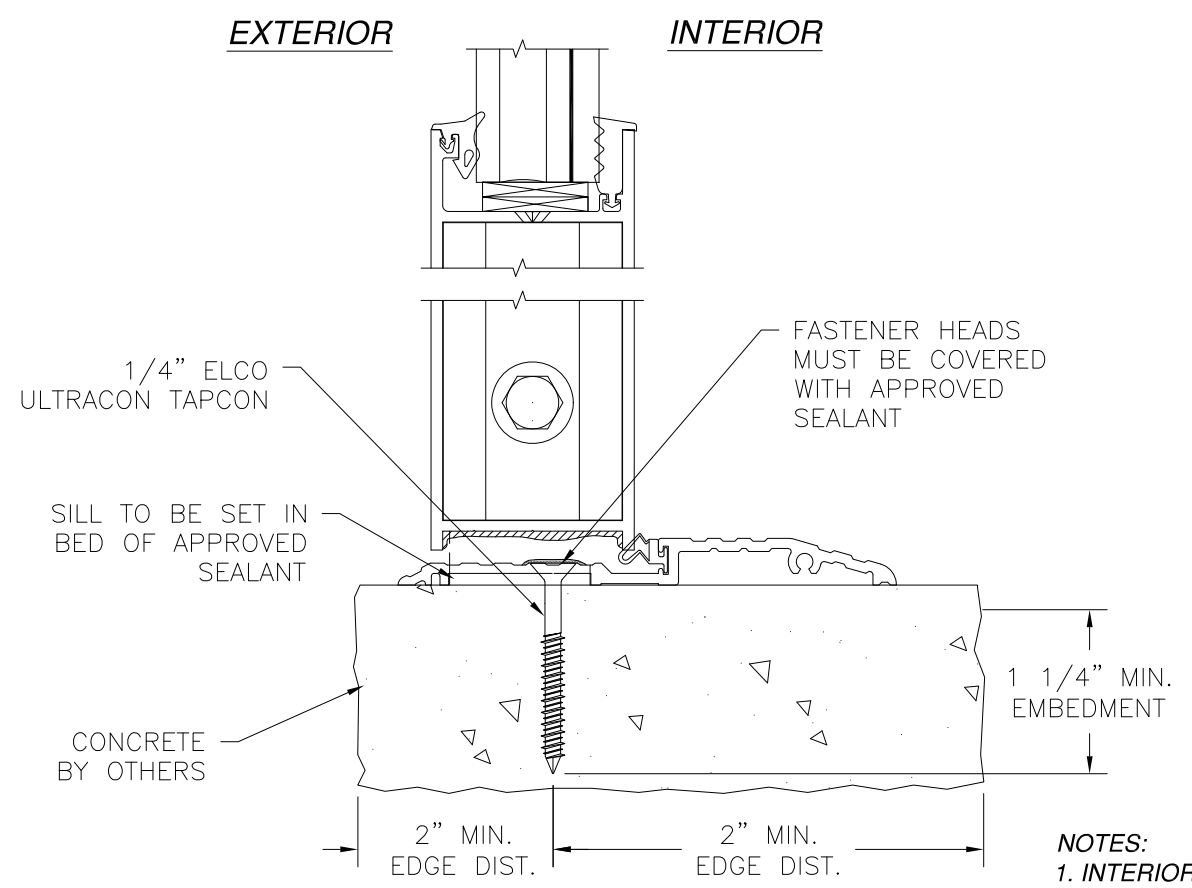
REVISIONS			
REV	DESCRIPTION	DATE	APPROVED
C	CHANGE MANUFACTURER'S NAME	03/23/2023	R.L.



**(A) TRANSOM HEADER
CONCRETE INSTALLATION
DOOR HEADER SIMILAR**



**(D) TRANSOM JAMB
MASONRY/CONCRETE
LOCK JAMB AND HINGE JAMB SIMILAR**



**(B) AIR SILL
CONCRETE INSTALLATION**

NOTES:
 1. INTERIOR AND EXTERIOR FINISHES, BY OTHERS, NOT SHOWN FOR CLARITY.
 2. PERIMETER AND JOINT SEALANT BY OTHERS TO BE DESIGNED IN ACCORDANCE WITH ASTM E2112

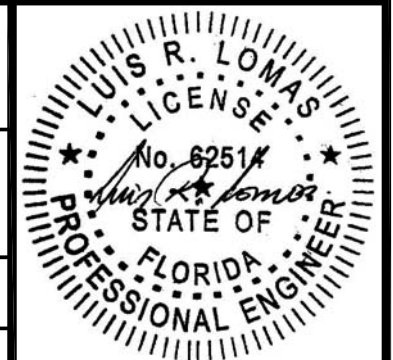
US ALUMINUM
 950 SOLON RD.
 WAXAHACHIE, TX 75165

SERIES IG500/IG600 STORM FRONT OS ALUMINUM
 STOREFRONT DOOR SYSTEM - LMI
 INSTALLATION DETAILS

DRAWN: AP	DWG NO. 08-01575	REV C
SCALE NTS	DATE 06/12/12	SHEET 9 OF 15

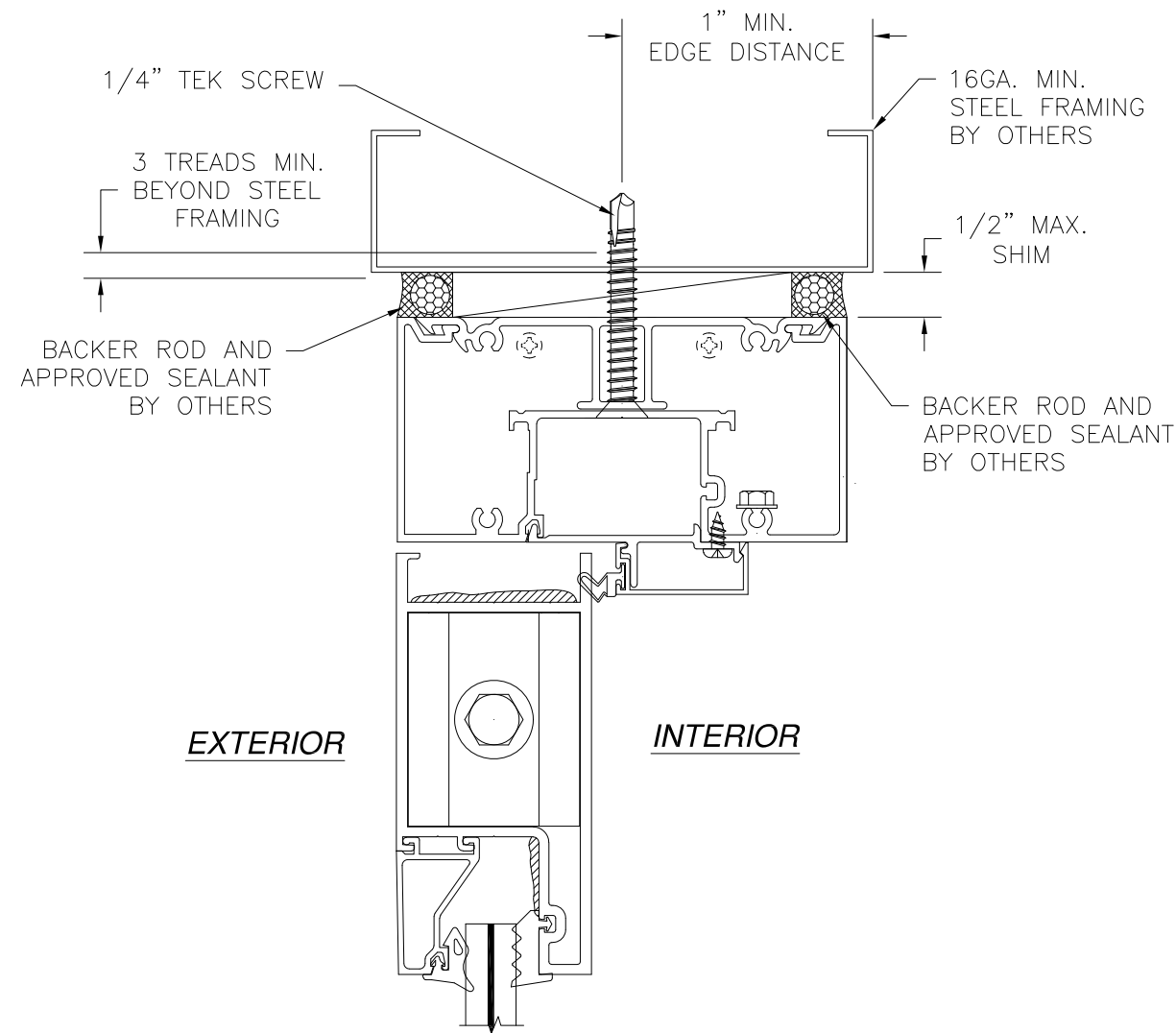
L. ROBERTO LOMAS P.E.
 400 S. PALM AVE, INDIAN LANTIC, FL 32903
 434-688-0609 rllomas@rlomaspe.com

SIGNED: 03/23/2023

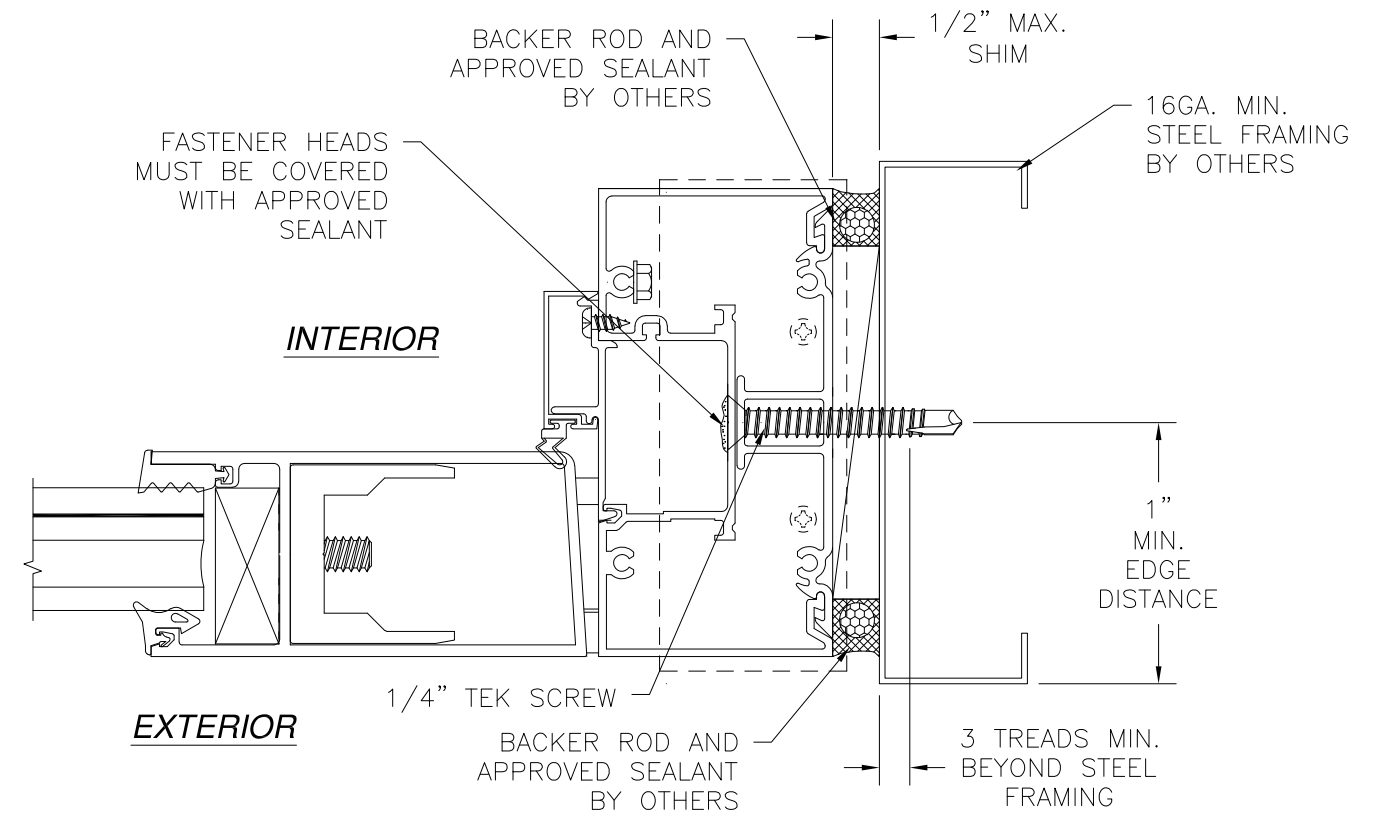


Luis R. Lomas P.E.
 FL No.: 62514

REVISIONS			
REV	DESCRIPTION	DATE	APPROVED
C	CHANGE MANUFACTURER'S NAME	03/23/2023	R.L.



(E) DOOR HEADER
STEEL FRAMING INSTALLATION
TRANSOM HEADER SIMILAR

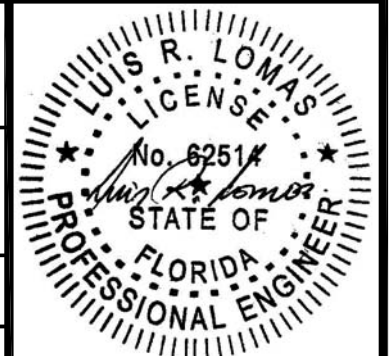


(G) JAMB
STEEL FRAMING INSTALLATION
TRANSOM JAMB AND HINGE JAMB SIMILAR

NOTES:
1. INTERIOR AND EXTERIOR FINISHES, BY OTHERS, NOT SHOWN FOR CLARITY.
2. PERIMETER AND JOINT SEALANT BY OTHERS TO BE DESIGNED IN ACCORDANCE WITH ASTM E2112

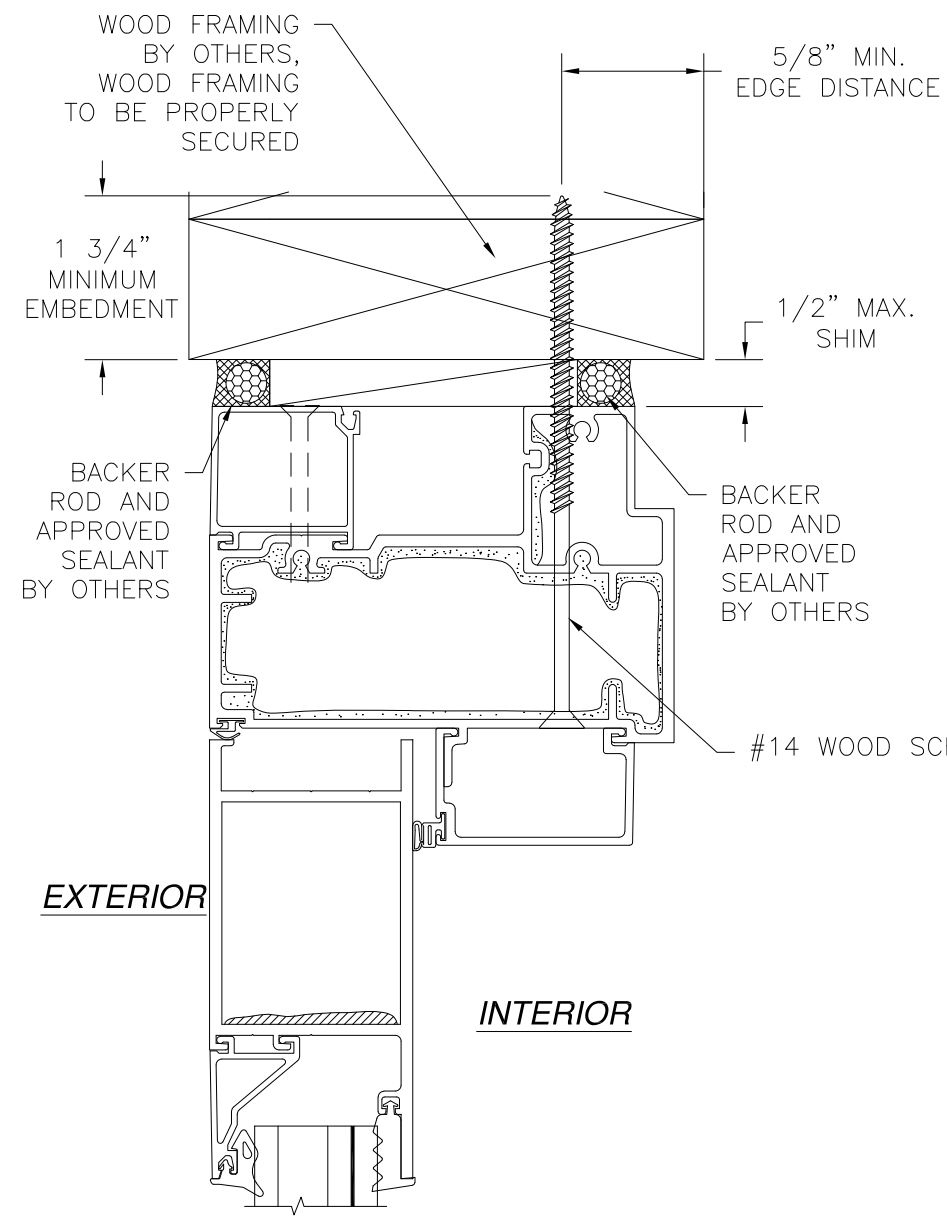
SIGNED: 03/23/2023

US ALUMINUM 950 SOLON RD. WAXAHACHIE, TX 75165		
SERIES IG500/IG600 STORM FRONT OS ALUMINUM STOREFRONT DOOR SYSTEM - LMI INSTALLATION DETAILS		
DRAWN: AP	DWG NO. 08-01575	REV C
SCALE NTS	DATE 06/12/12	SHEET 10 OF 15
L. ROBERTO LOMAS P.E. 400 S. PALM AVE, INDIALANTIC, FL 32903 434-688-0609 rllomas@lrlomaspe.com		

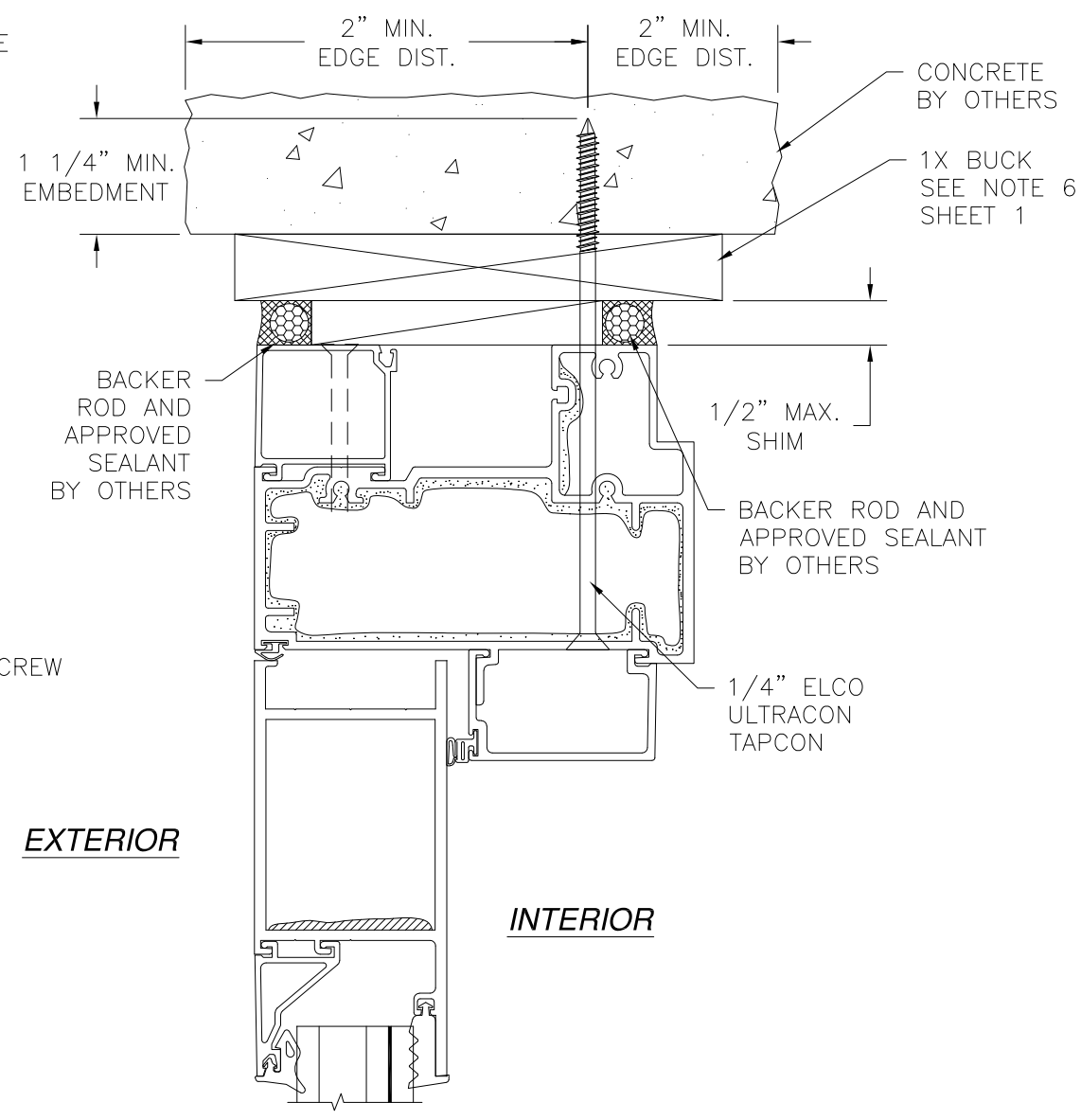


Luis R. Lomas P.E.
FL No.: 62514

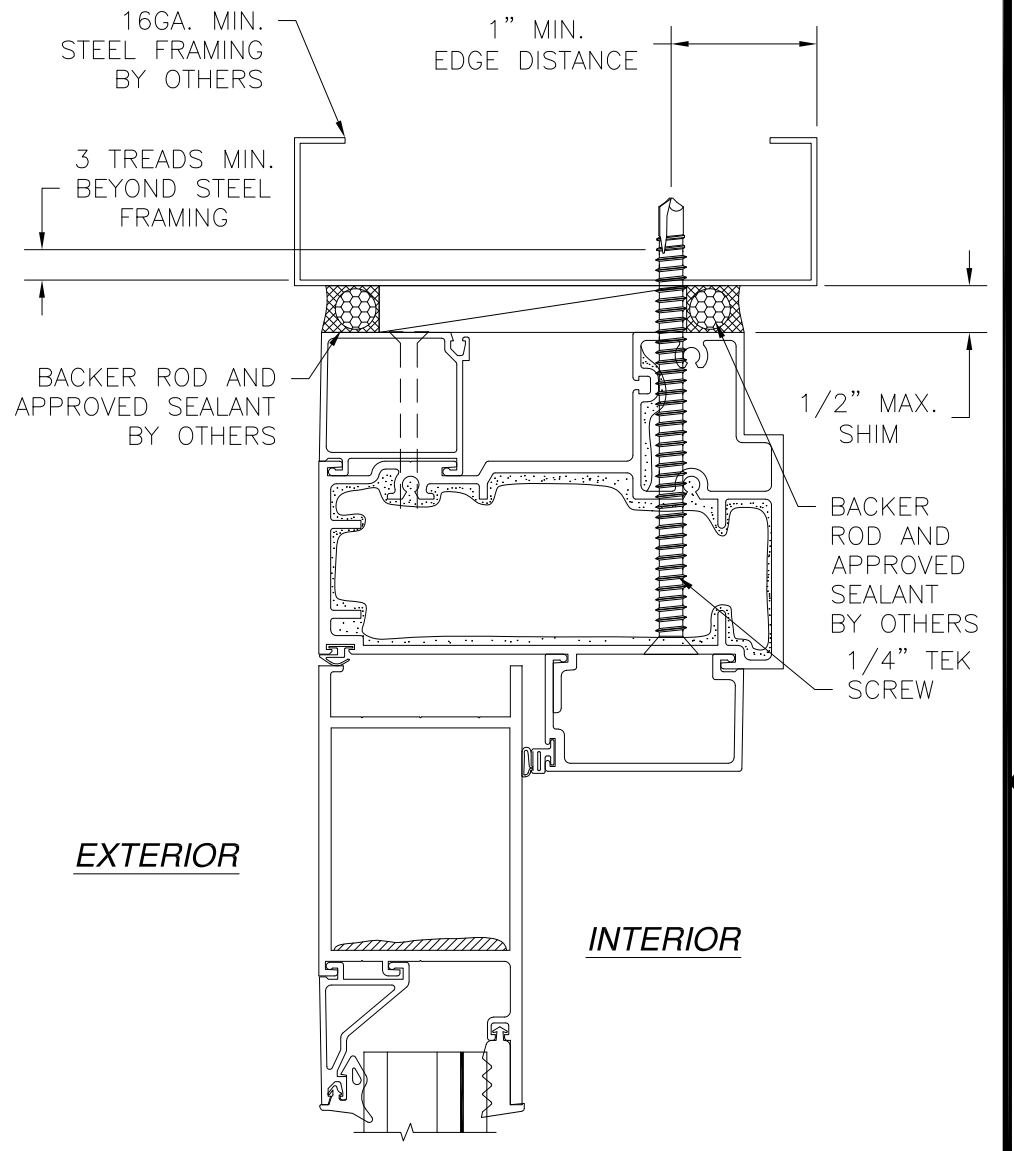
REVISIONS			
REV	DESCRIPTION	DATE	APPROVED
C	CHANGE MANUFACTURER'S NAME	03/23/2023	R.L.



(E) OPTIONAL DOOR HEADER
2X INSTALLATION



(E) OPTIONAL DOOR HEADER
CONCRETE INSTALLATION



(E) OPTIONAL DOOR HEADER
STEEL FRAMING INSTALLATION

SIGNED: 03/23/2023

NOTES:
1. INTERIOR AND EXTERIOR FINISHES, BY OTHERS, NOT SHOWN FOR CLARITY.
2. PERIMETER AND JOINT SEALANT BY OTHERS TO BE DESIGNED IN ACCORDANCE WITH ASTM E2112

US ALUMINUM
950 SOLON RD.
WAXAHACHIE, TX 75165

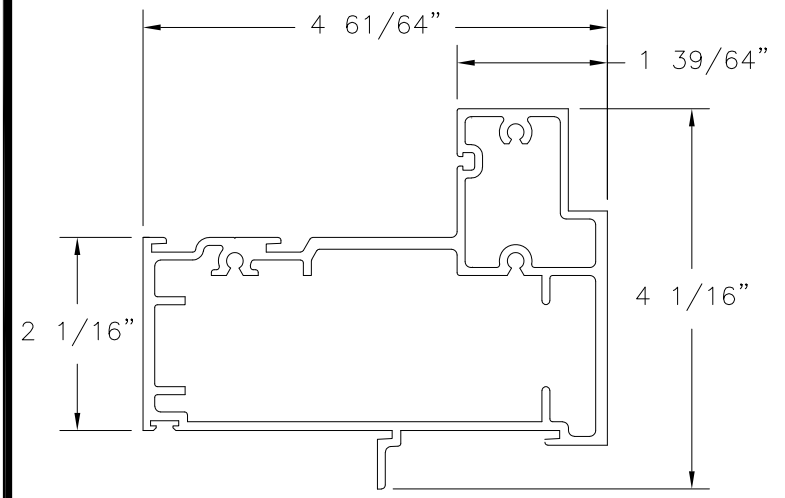
SERIES IG500/IG600 STORM FRONT OS ALUMINUM
STOREFRONT DOOR SYSTEM - LMI
INSTALLATION DETAILS

DRAWN: AP	DWG NO. 08-01575	REV C
SCALE NTS	DATE 06/12/12	SHEET 11 OF 15

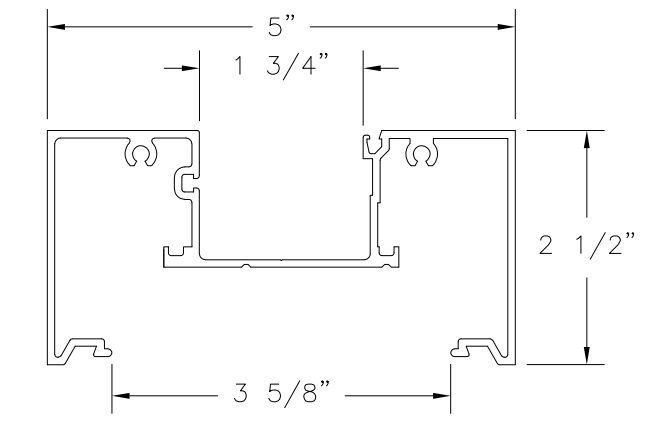
L. ROBERTO LOMAS P.E.
400 S. PALM AVE, INDIALANTIC, FL 32903
434-688-0609 rllomas@rlomaspe.com

Luis R. Lomas P.E.
FL No.: 62514

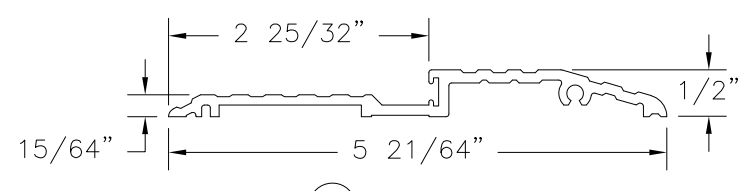
REVISIONS			
REV	DESCRIPTION	DATE	APPROVED
C	CHANGE MANUFACTURER'S NAME	03/23/2023	R.L.



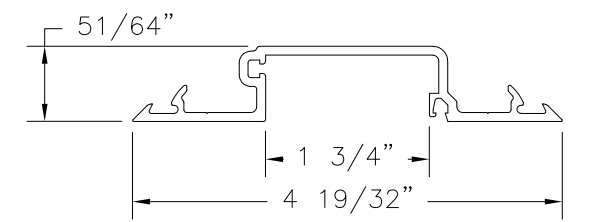
④ **HORIZONTAL MULL - 1 5/16" GLASS**
EXTRUDED ALUMINUM 6063-T5 .125" THICK



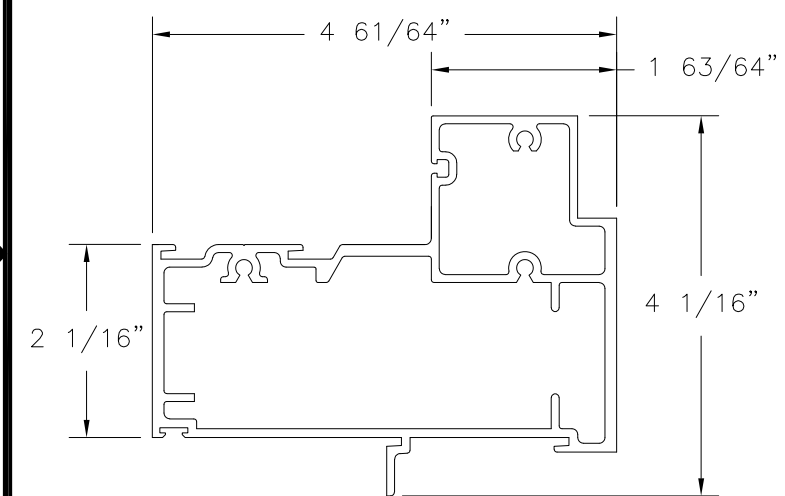
② **MAIN FRAME - 1 5/16" GLASS**
EXTRUDED ALUMINUM 6063-T5 .080" THICK



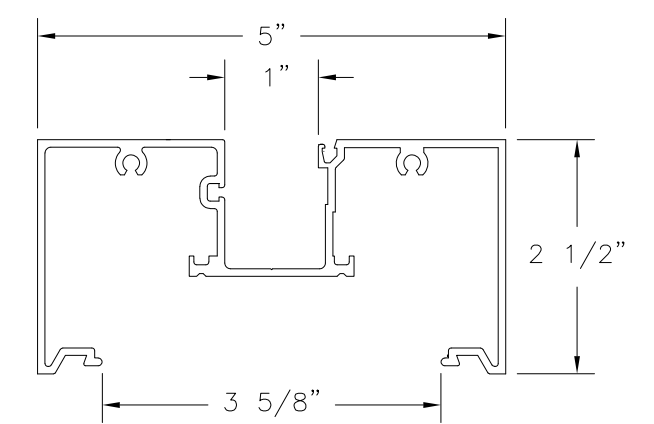
⑦ **AIR SILL**
EXTRUDED ALUMINUM 6063-T5 .109" THICK



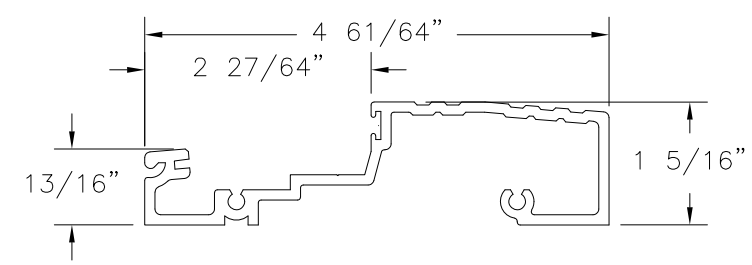
⑨ **FILLER VERTICAL - 1 5/16" GLASS**
EXTRUDED ALUMINUM 6063-T5 .095" THICK



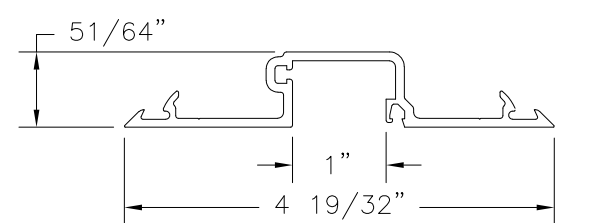
③ **HORIZONTAL MULL - 9/16" GLASS**
EXTRUDED ALUMINUM 6063-T5 .125" THICK



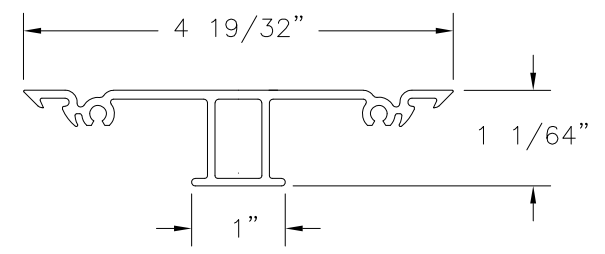
① **MAIN FRAME - 9/16" GLASS**
EXTRUDED ALUMINUM 6063-T5 .080" THICK



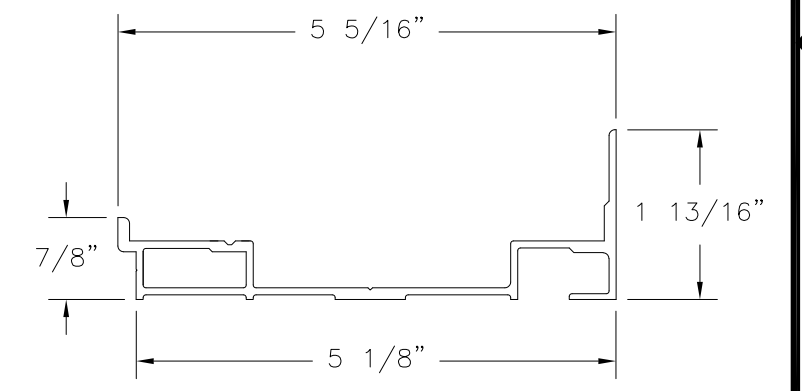
⑥ **WATER THRESHOLD**
EXTRUDED ALUMINUM 6063-T5 .109" THICK



⑧ **FILLER VERTICAL - 9/16" GLASS**
EXTRUDED ALUMINUM 6063-T5 .095" THICK

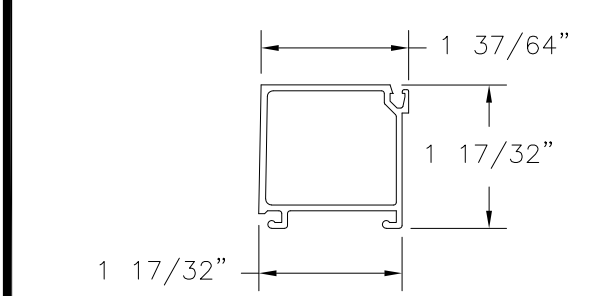


⑫ **FILLER JAMB/HEAD**
EXTRUDED ALUMINUM 6063-T5 .080" THICK

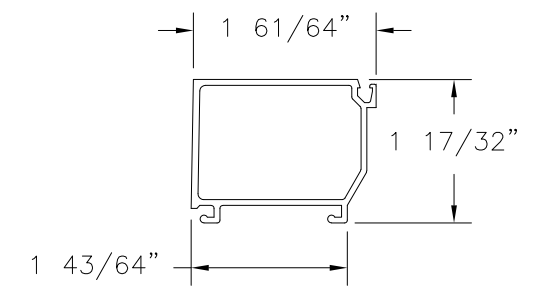


⑤ **SUB SILL**
EXTRUDED ALUMINUM 6063-T5 .075" THICK

SIGNED: 03/23/2023



⑪ **STOP - 1 5/16" GLASS**
EXTRUDED ALUMINUM 6063-T5 .062" THICK



⑩ **STOP - 9/16" GLASS**
EXTRUDED ALUMINUM 6063-T5 .062" THICK

US ALUMINUM
950 SOLON RD.
WAXAHACHIE, TX 75165

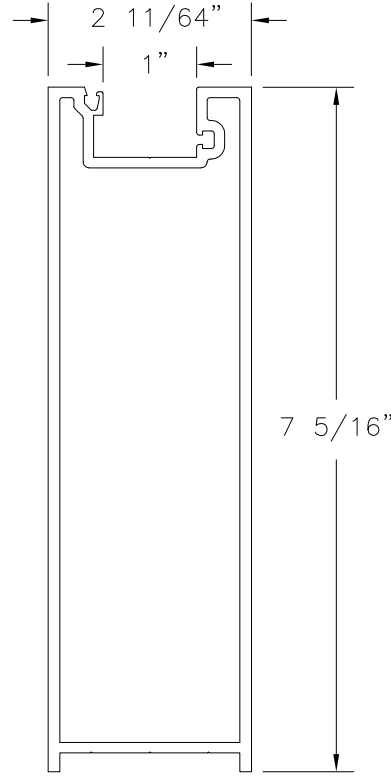
SERIES IG500/IG600 STORM FRONT OS ALUMINUM
STOREFRONT DOOR SYSTEM - LMI
COMPONENTS

DRAWN: AP	DWG NO. 08-01575	REV C
SCALE NTS	DATE 06/12/12	SHEET 12 OF 15

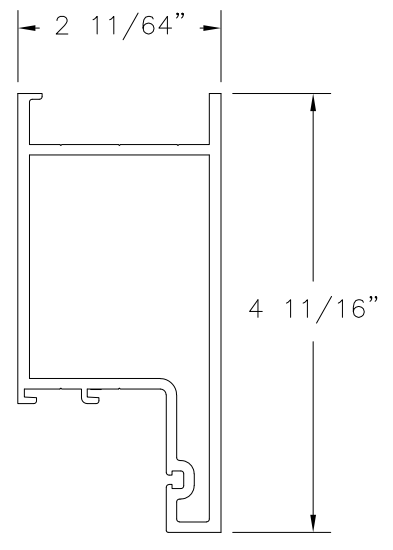
L. ROBERTO LOMAS P.E.
400 S. PALM AVE, INDIALANTIC, FL 32903
434-688-0609 rllomas@rlomaspe.com

Luis R. Lomas P.E.
FL No.: 62514

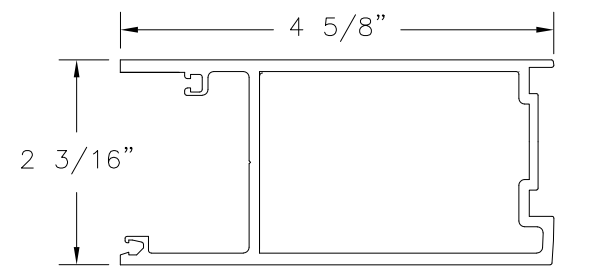
REVISIONS			
REV	DESCRIPTION	DATE	APPROVED
C	CHANGE MANUFACTURER'S NAME	03/23/2023	R.L.



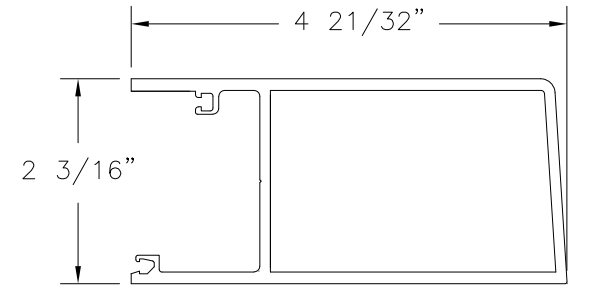
18 **BOTTOM RAIL - 9/16" GLASS**
EXTRUDED ALUMINUM 6063-T5 .125" THICK



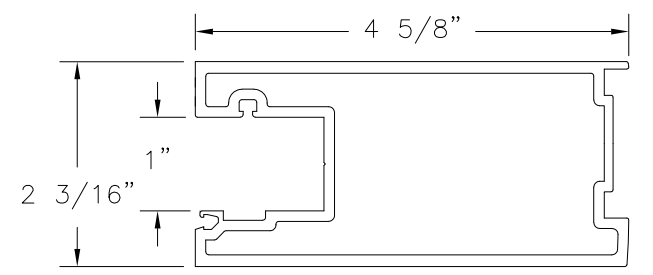
14 **TOP RAIL - 9/16" GLASS**
EXTRUDED ALUMINUM 6063-T5 .125" THICK



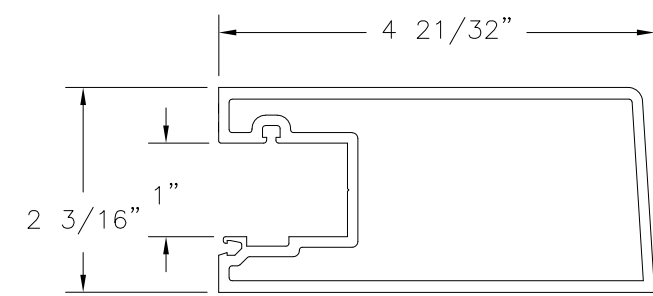
44 **LOCK STILE - 1 5/16" GLASS**
EXTRUDED ALUMINUM 6063-T5 .125" THICK



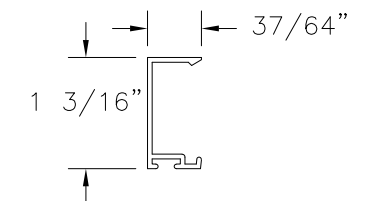
36 **PLAIN STILE - 1 5/16" GLASS**
EXTRUDED ALUMINUM 6063-T5 .125" THICK



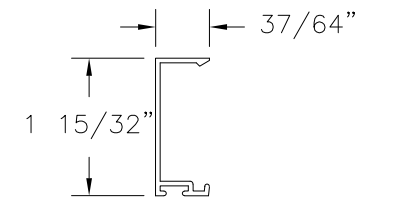
43 **LOCK STILE - 9/16" GLASS**
EXTRUDED ALUMINUM 6063-T5 .125" THICK



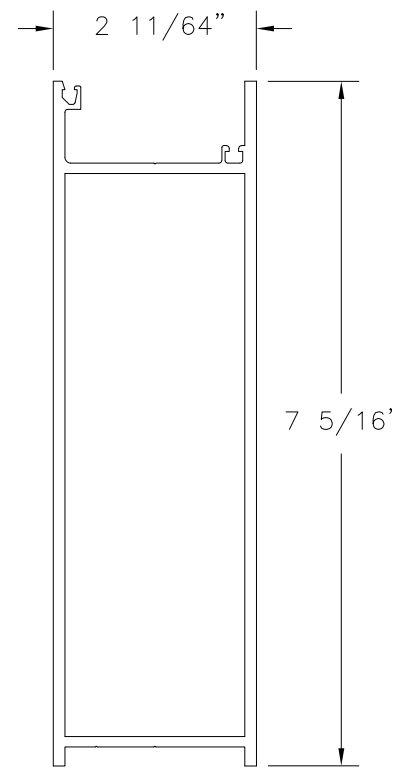
35 **PLAIN STILE - 9/16" GLASS**
EXTRUDED ALUMINUM 6063-T5 .125" THICK



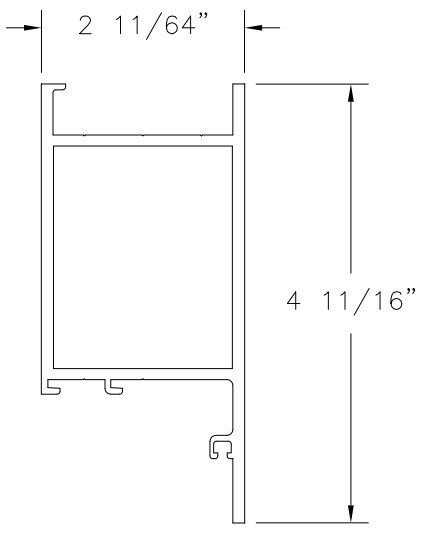
37 **DOOR STOP - 9/16" GLASS**
EXTRUDED ALUMINUM 6063-T5 .050" THICK



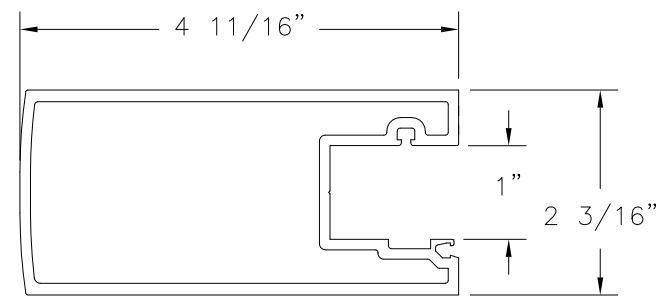
38 **DOOR STOP - 1 5/16" GLASS**
EXTRUDED ALUMINUM 6063-T5 .050" THICK



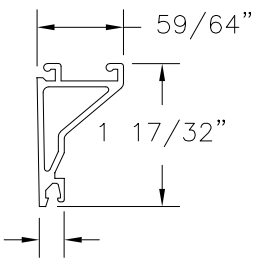
19 **BOTTOM RAIL - 1 5/16" GLASS**
EXTRUDED ALUMINUM 6063-T5 .125" THICK



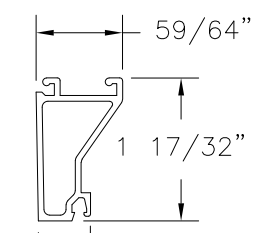
15 **TOP RAIL - 1 5/16" GLASS**
EXTRUDED ALUMINUM 6063-T5 .125" THICK



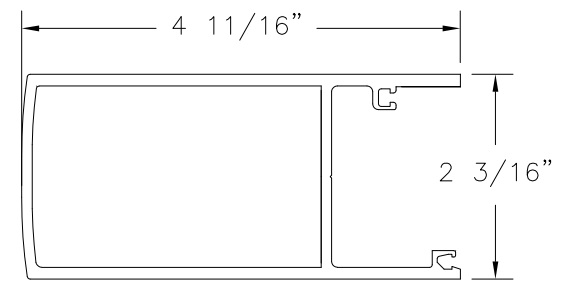
41 **LOCK STILE - 9/16" GLASS**
EXTRUDED ALUMINUM 6063-T5 .125" THICK



17 **DOOR GLASS STOP - 1 5/16" GLASS**
EXTRUDED ALUMINUM 6063-T5 .062" THICK



16 **DOOR GLASS STOP - 9/16" GLASS**
EXTRUDED ALUMINUM 6063-T5 .062" THICK



42 **LOCK STILE - 1 5/16" GLASS**
EXTRUDED ALUMINUM 6063-T5 .125" THICK

SIGNED: 03/23/2023

US ALUMINUM
950 SOLON RD.
WAXAHACHIE, TX 75165

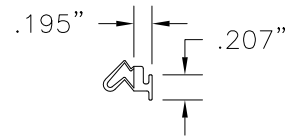
SERIES IG500/IG600 STORM FRONT OS ALUMINUM
STOREFRONT DOOR SYSTEM - LMI
COMPONENTS

DRAWN: AP	DWG NO. 08-01575	REV C
SCALE NTS	DATE 06/12/12	SHEET 13 OF 15

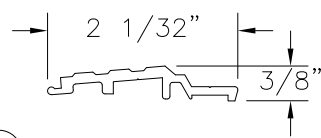
L. ROBERTO LOMAS P.E.
400 S. PALM AVE, INDIALANTIC, FL 32903
434-688-0609 rllomas@rlomaspe.com

L. ROBERTO LOMAS
No. 62514
STATE OF FLORIDA
PROFESSIONAL ENGINEER

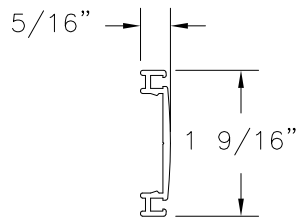
Luis R. Lomas P.E.
FL No.: 62514



20 **DOOR WEATHER STRIP**
VINYL

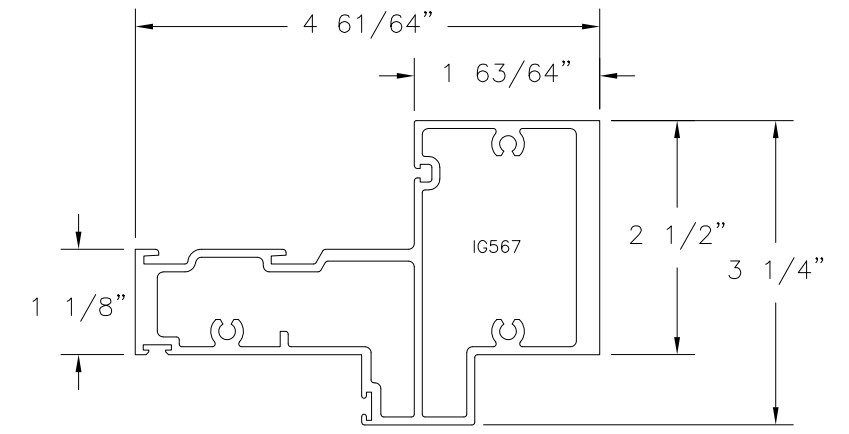


33 **SILL INSERT**
EXTRUDED ALUMINUM
6063-T5 .090" THICK

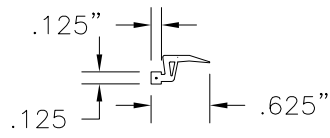


60 **LOCK STILE CAP**
EXTRUDED ALUMINUM
6063-T5 .055" THICK

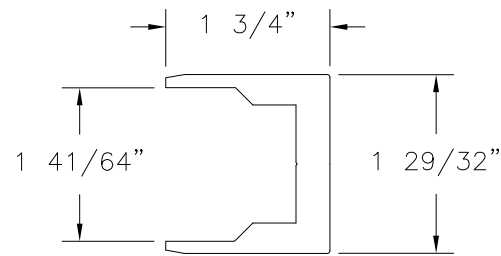
REVISIONS			
REV	DESCRIPTION	DATE	APPROVED
C	CHANGE MANUFACTURER'S NAME	03/23/2023	R.L.



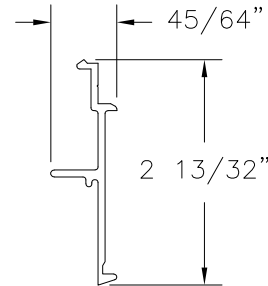
62 **HORIZONTAL MULL - 9/16" GLASS**
EXTRUDED ALUMINUM 6063-T5 .085" THICK



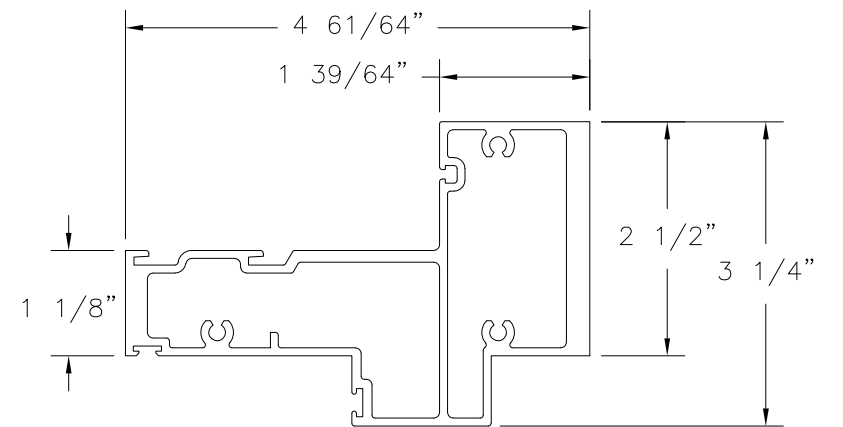
45 **DOOR WEATHER STRIP**
VINYL



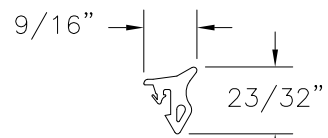
46 **SHEAR CHANNEL**
EXTRUDED ALUMINUM
6063-T5 .363" THICK



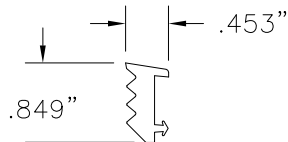
40 **STOP RETAINER - 1 5/16" GLASS**
EXTRUDED ALUMINUM 6063-T5 .075" THICK



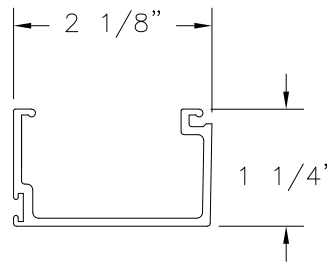
63 **HORIZONTAL MULL - 1 5/16" GLASS**
EXTRUDED ALUMINUM 6063-T5 .085" THICK



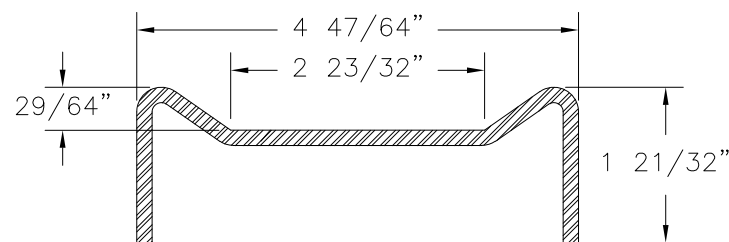
21 **EXTERIOR GASKET**
EDPM SPONGE



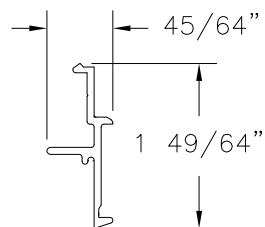
22 **INTERIOR GASKET**
EDPM SPONGE



61 **DOOR STOP**
EXTRUDED ALUMINUM 6063-T5 .085" THICK



28 **STEEL STIFFENER HEAVY**
FORMED 8GA. A36 MILD STEEL



39 **STOP RETAINER - 9/16" GLASS**
EXTRUDED ALUMINUM 6063-T5 .075" THICK

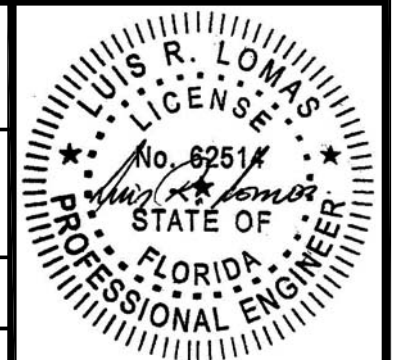
SIGNED: 03/23/2023

US ALUMINUM
950 SOLON RD.
WAXAHACHIE, TX 75165

SERIES IG500/IG600 STORM FRONT OS ALUMINUM
STOREFRONT DOOR SYSTEM - LMI
COMPONENTS

DRAWN: AP	DWG NO. 08-01575	REV C
SCALE NTS	DATE 06/12/12	SHEET 14 OF 15

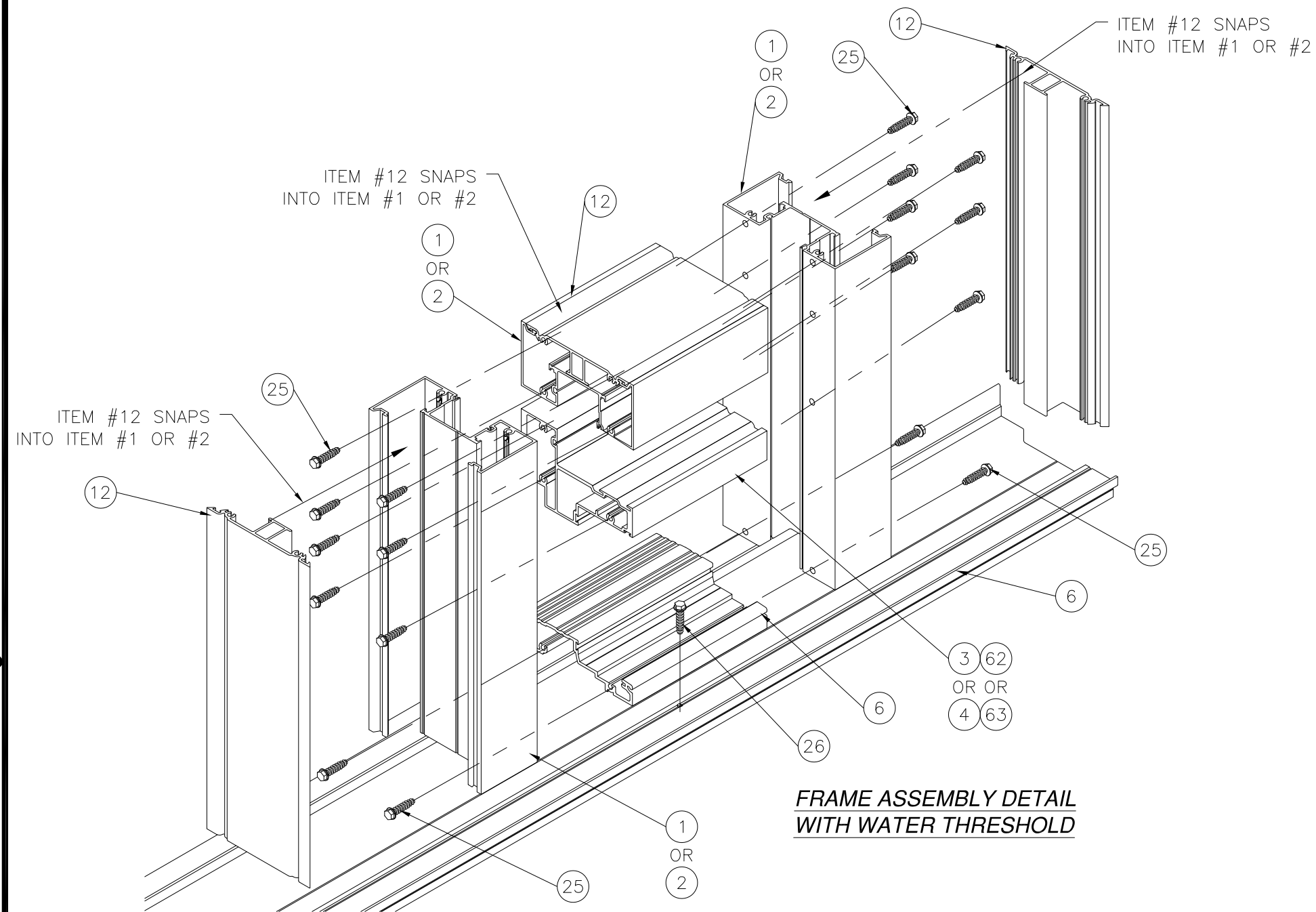
L. ROBERTO LOMAS P.E.
400 S. PALM AVE, INDIALANTIC, FL 32903
434-688-0609 rllomas@rlomaspe.com



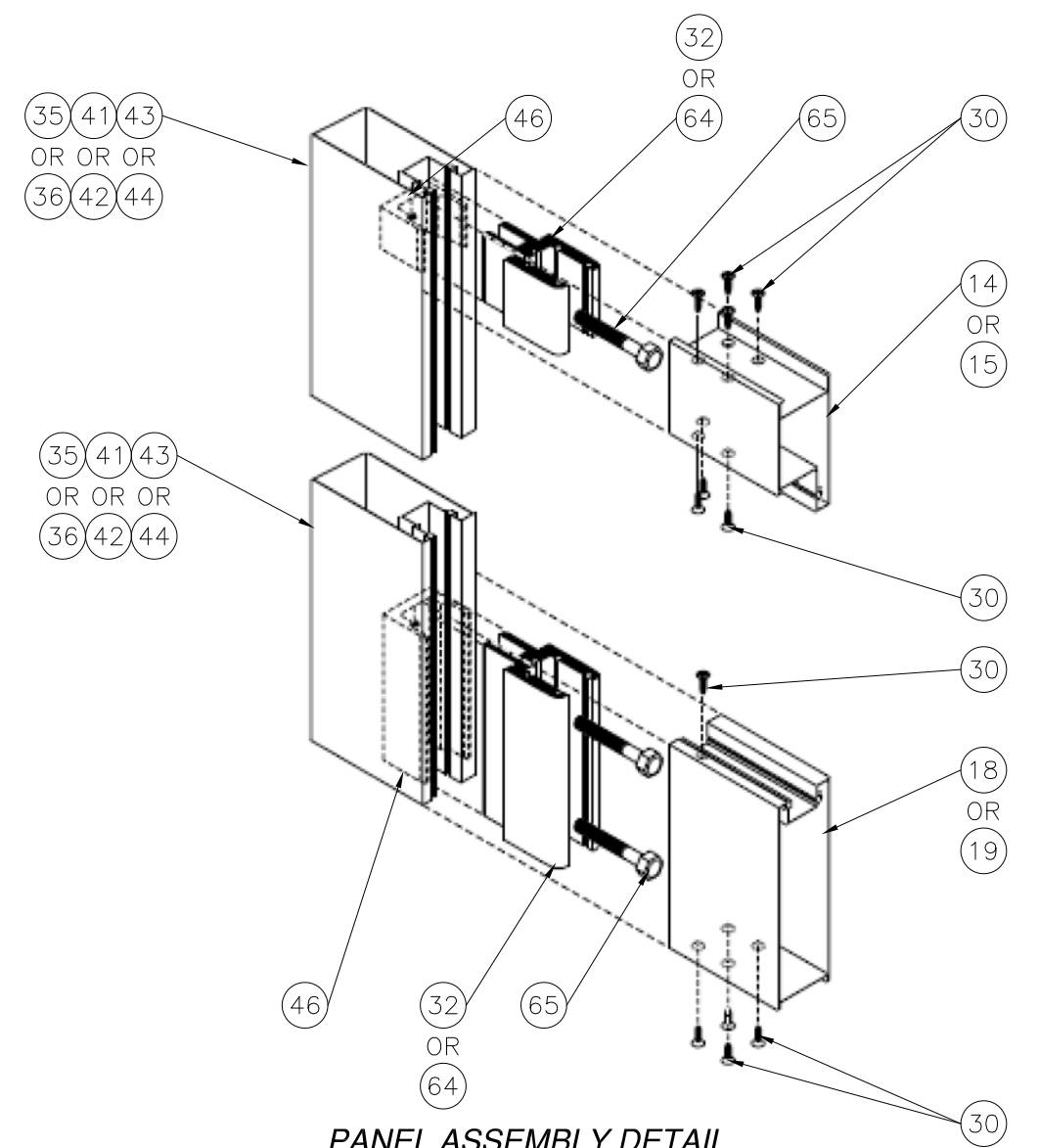
Luis R. Lomas P.E.
FL No.: 62514

REVISIONS

REV	DESCRIPTION	DATE	APPROVED
C	CHANGE MANUFACTURER'S NAME	03/23/2023	R.L.

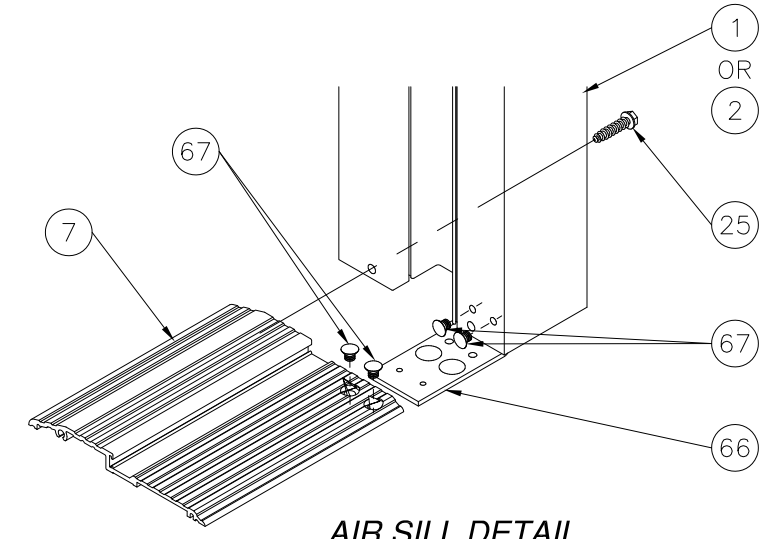


FRAME ASSEMBLY DETAIL WITH WATER THRESHOLD



PANEL ASSEMBLY DETAIL

SIGNED: 03/23/2023



AIR SILL DETAIL

US ALUMINUM
 950 SOLON RD.
 WAXAHACHIE, TX 75165

SERIES IG500/IG600 STORM FRONT OS ALUMINUM
 STOREFRONT DOOR SYSTEM - LMI
 PANEL AND FRAME ASSEMBLY DETAILS

DRAWN: AP	DWG NO. 08-01575	REV C
SCALE NTS	DATE 06/12/12	SHEET 15 OF 15

L. ROBERTO LOMAS P.E.
 400 S. PALM AVE, INDIALANTIC, FL 32903
 434-688-0609 rllomas@rlomaspe.com

Luis R. Lomas P.E.
 FL No.: 62514