

REVISIONS			
REV	DESCRIPTION	DATE	APPROVED
C	CHANGE MANUFACTURER'S NAME	03/23/2023	R.L.

NOTES:

1. THE PRODUCT SHOWN HEREIN IS DESIGNED AND MANUFACTURED TO COMPLY WITH REQUIREMENTS OF THE FLORIDA BUILDING CODE INCLUDING THE HVHZ.
2. WOOD FRAMING AND MASONRY OPENING TO BE DESIGNED AND ANCHORED TO PROPERLY TRANSFER ALL LOADS TO STRUCTURE. FRAMING AND MASONRY OPENING IS THE RESPONSIBILITY OF THE ARCHITECT OR ENGINEER OF RECORD.
3. WHERE SHIM OR BUCK THICKNESS IS LESS THAN 1-1/2" UNITS MUST BE ANCHORED THROUGH THE FRAME IN ACCORDANCE WITH MANUFACTURER'S PUBLISHED INSTALLATION INSTRUCTIONS. ANCHORS SHALL BE SECURELY FASTENED DIRECTLY INTO MASONRY, CONCRETE OR OTHER STRUCTURAL SUBSTRATE MATERIAL.
4. WHERE WOOD BUCK THICKNESS IS 1-1/2" OR GREATER, BUCK SHALL BE SECURELY FASTENED TO MASONRY, CONCRETE OR OTHER STRUCTURAL SUBSTRATE. UNITS MAY BE ANCHORED THROUGH FRAME TO SECURED WOOD BUCK IN ACCORDANCE WITH MANUFACTURER'S PUBLISHED INSTALLATION INSTRUCTIONS.
5. WHERE 1X BUCK IS NOT USED DISSIMILAR MATERIALS MUST BE SEPARATED WITH APPROVED COATING OR MEMBRANE. SELECTION OF COATING OR MEMBRANE IS THE RESPONSIBILITY OF THE ARCHITECT OR ENGINEER OF RECORD.
6. BUCKS SHALL EXTEND BEYOND UNIT FRAME INTERIOR FACE SO THAT FULL FRAME SUPPORT IS PROVIDED.
7. SHIM AS REQUIRED AT EACH ANCHOR LOCATION WITH LOAD BEARING SHIM. SHIM WHERE SPACE OF 1/16" OR GREATER OCCURS. MAXIMUM ALLOWABLE SHIM STACK TO BE 1/4".
8. SHIMS SHALL BE LOCATED, APPLIED AND MADE FROM MATERIALS AND THICKNESS CAPABLE OF SUSTAINING APPLICABLE LOADS.
9. WIND LOAD DURATION FACTOR Cd=1.6 WAS USED FOR WOOD ANCHOR CALCULATIONS.
10. FRAME MATERIAL: 6063-T5 ALUMINUM.
11. UNITS MUST BE GLAZED PER ASTM E1300, SEE SHEET 5 FOR GLASS DETAILS.
12. APPROVED IMPACT PROTECTIVE SYSTEM IS NOT REQUIRED FOR THIS PRODUCT IN WIND BORNE DEBRIS REGIONS.
13. FOR ANCHORING HEAD, JAMB AND WATER THRESHOLD INTO WOOD FRAMING OR 2X BUCK USE 3/8" LAG SCREWS WITH SUFFICIENT LENGTH TO ACHIEVE A 1 7/8" MINIMUM EMBEDMENT INTO SUBSTRATE. LOCATE ANCHORS AS SHOWN IN ELEVATIONS AND INSTALLATION DETAILS.
14. FOR ANCHORING HEAD, JAMBS AND WATER THRESHOLD INTO MASONRY/CONCRETE USE 3/8" POWER BOLT WITH SUFFICIENT LENGTH TO ACHIEVE A 2" MINIMUM EMBEDMENT INTO SUBSTRATE WITH 3" MINIMUM EDGE DISTANCE. LOCATE ANCHORS AS SHOWN IN ELEVATIONS AND INSTALLATION DETAILS.
15. FOR ANCHORING HEAD, JAMB AND WATER THRESHOLD INTO METAL STRUCTURE USE 3/8" SMS OR SELF DRILLING SCREWS WITH SUFFICIENT LENGTH TO ACHIEVE 3 THREADS MINIMUM BEYOND STRUCTURE INTERIOR WALL. LOCATE ANCHORS AS SHOWN IN ELEVATIONS AND INSTALLATION DETAILS.
16. FOR ANCHORING AIR THRESHOLD INTO WOOD FRAMING OR 2X BUCK USE #14 WOOD SCREWS WITH SUFFICIENT LENGTH TO ACHIEVE A 1 5/8" MINIMUM EMBEDMENT INTO SUBSTRATE. LOCATE ANCHORS AS SHOWN IN ELEVATIONS AND INSTALLATION DETAILS.
17. FOR ANCHORING AIR THRESHOLD INTO CONCRETE/MASONRY USE 1/4" TAPCONS WITH SUFFICIENT LENGTH TO ACHIEVE A 1 3/4" MINIMUM EMBEDMENT INTO SUBSTRATE WITH 2" MINIMUM EDGE DISTANCE. LOCATE ANCHORS AS SHOWN IN ELEVATIONS AND INSTALLATION DETAILS.
18. FOR ANCHORING AIR THRESHOLD INTO METAL STRUCTURE USE #14 SMS OR SELF DRILLING SCREWS WITH SUFFICIENT LENGTH TO ACHIEVE 3 THREADS MINIMUM BEYOND STRUCTURE INTERIOR WALL. LOCATE ANCHORS AS SHOWN IN ELEVATIONS AND INSTALLATION DETAILS.
19. ALL FASTENERS TO BE CORROSION RESISTANT.
20. INSTALLATION ANCHORS SHALL BE INSTALLED IN ACCORDANCE WITH ANCHOR MANUFACTURER'S INSTALLATION INSTRUCTIONS AND ANCHORS SHALL NOT BE USED IN SUBSTRATES WITH STRENGTHS LESS THAN THE MINIMUM STRENGTH SPECIFIED BELOW:
 - A. WOOD: MINIMUM SPECIFIC GRAVITY OF G=0.42
 - B. CONCRETE: MINIMUM COMPRESSIVE STRENGTH OF 2,000 PSI.
 - C. MASONRY: GROUT FILLED BLOCK PER ASTM C90 WITH Fm=2,000PSI MINIMUM.
 - D. METAL STRUCTURE: STEEL 18GA (.048") FY=33KSI/FU=52KSI OR ALUMINUM 6063-T5 FU=30KSI .125" THICK MINIMUM
23. THIS SYSTEM IS FIELD GLAZED AND ASSEMBLED. CONTRACTOR/GLAZIER IS RESPONSIBLE FOR COMPLYING WITH GLAZING AND ASSEMBLY REQUIREMENTS.

TABLE OF CONTENTS	
SHEET NO.	DESCRIPTION
1	NOTES
2	ELEVATION
3	ADDITIONAL APPROVED CONFIGURATIONS
4	ANCHORING LAYOUT AND NOTES
5	BILL OF MATERIALS AND GLAZING DETAILS
6 - 7	CROSS SECTIONS
8 - 11	INSTALLATION DETAILS
12 - 13	COMPONENTS
14	PANEL AND FRAME ASSEMBLY DETAILS

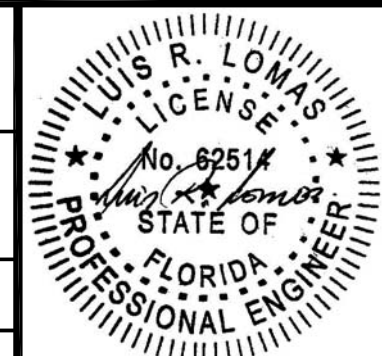
US ALUMINUM
950 SOLON RD.
WAXAHACHIE, TX 75165

SERIES BT601/IT600 STORM FRONT OS ALUMINUM
STOREFRONT DOOR SYSTEM - LMI
NOTES

DRAWN: TJH	DWG NO. 08-01577	REV C
SCALE NTS	DATE 01/11/10	SHEET 1 OF 14

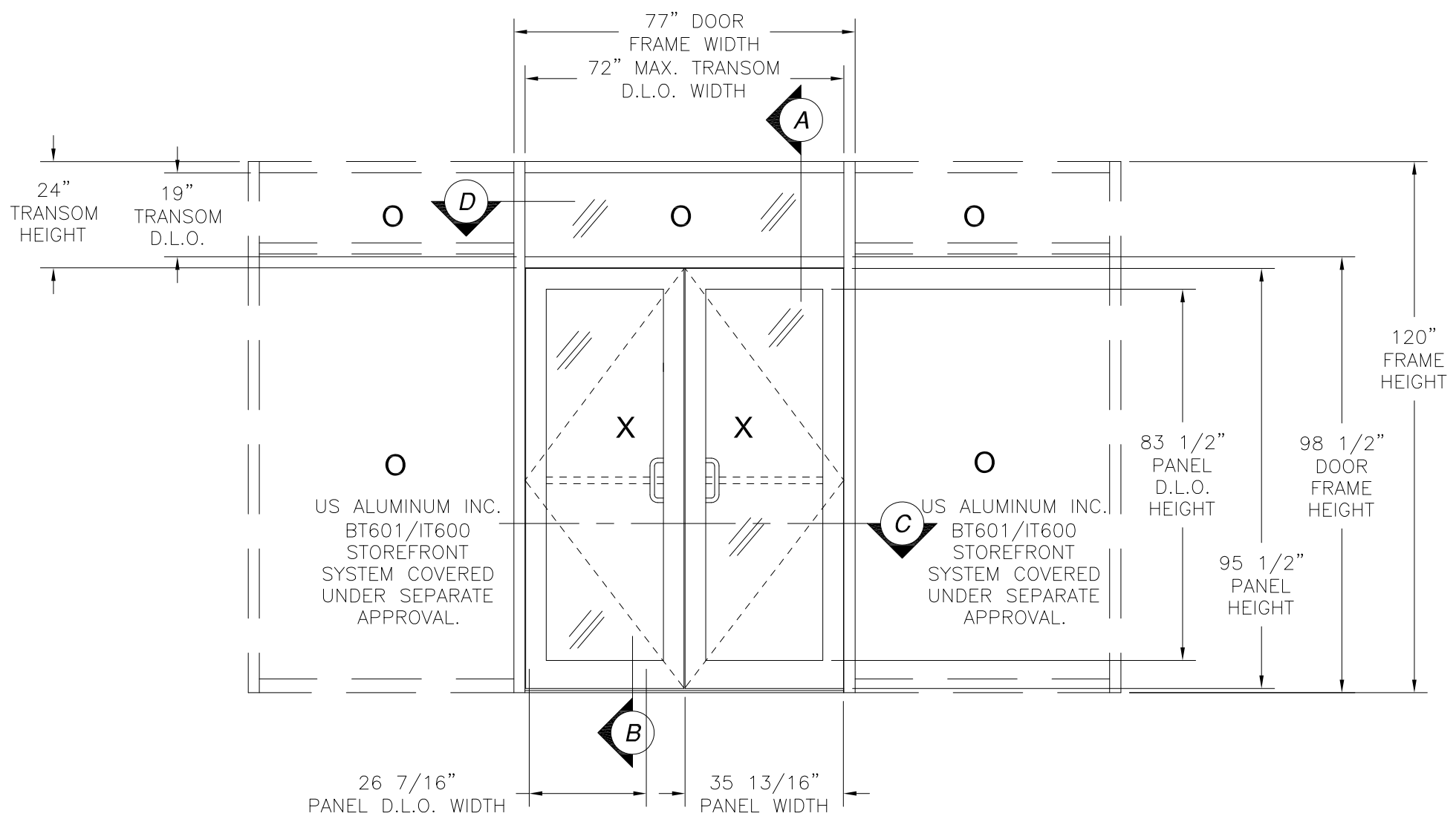
L. ROBERTO LOMAS P.E.
400 S. PALM AVE, INDIALANTIC, FL 32903
434-688-0609 rllomas@rlomaspe.com

SIGNED: 03/23/2023



Luis R. Lomas P.E.
FL No.: 62514

REVISIONS			
REV	DESCRIPTION	DATE	APPROVED
C	CHANGE MANUFACTURER'S NAME	03/23/2023	R.L.



**SERIES BT601/IT600 STORM FRONT OS ALUMINUM STOREFRONT
DOUBLE DOOR WITH TRANSOM
EXTERIOR VIEW**

FOR RATINGS SEE SHEET 3

HARDWARE SCHEDULE	
HINGING METHOD	PUSH / PULLS
HAGER BUTT HINGE	STANDARD PUSH BAR
DH299 GEAR HINGE PEMKO	STANDARD PULL HANDLE
DH022 OFFSET PIVOTS	ROCKWOOD PUSH/PULL BX15745

LOCKS / EXIT DEVICES	CLOSERS
USAL SIX PIN CYLINDER AND CYLINDER RING	CRL 045 SMC
USAL THUMB TURN	JACKSON 20-330 OHCC
USAL FLUSH BOLTS	LCN4111 SMOOTHIE SMC
JACKSON 1285 CVR PANIC	LCN1461 SMC
JACKSON 2086 CVR PANIC	LCN 2030 OHCC
IVES FLUSH BOLTS	LCN 4040 SUPER SMOOTHIE SMC
ADAMS RITE 1850	DORMA 650 SMC
ADAMS RITE 1880	DORMA 650 PAFHO SMC
ADAMSRITE G86 CVR PANIC	
AHT CVR PANIC	

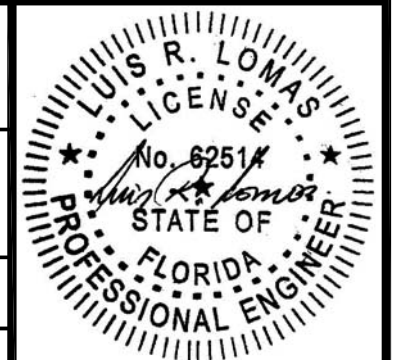
US ALUMINUM
950 SOLON RD.
WAXAHACHIE, TX 75165

SERIES BT601/IT600 STORM FRONT OS ALUMINUM
STOREFRONT DOOR SYSTEM - LMI
ELEVATION

DRAWN: TJH	DWG NO. 08-01577	REV C
SCALE NTS	DATE 01/11/10	SHEET 2 OF 14

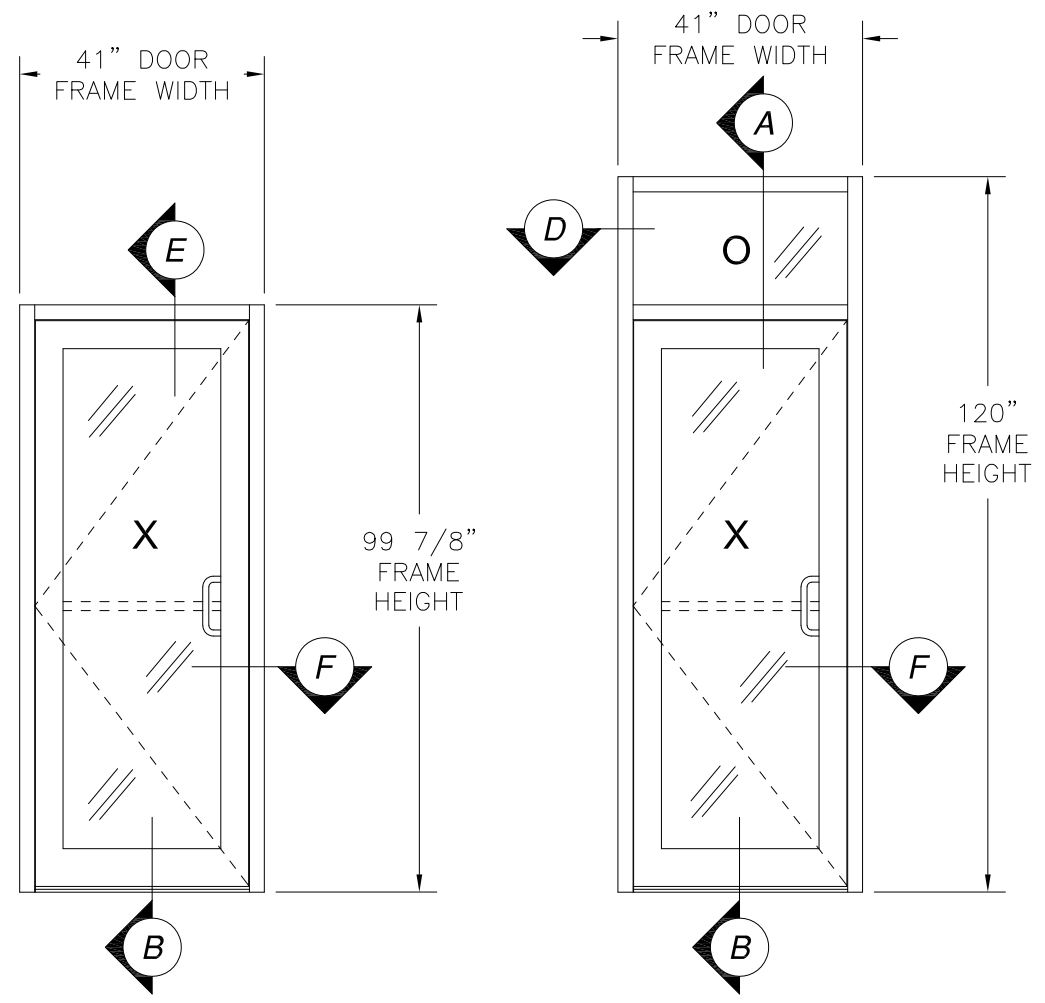
L. ROBERTO LOMAS P.E.
400 S. PALM AVE, INDIALANTIC, FL 32903
434-688-0609 rllomas@rlomaspe.com

SIGNED: 03/23/2023



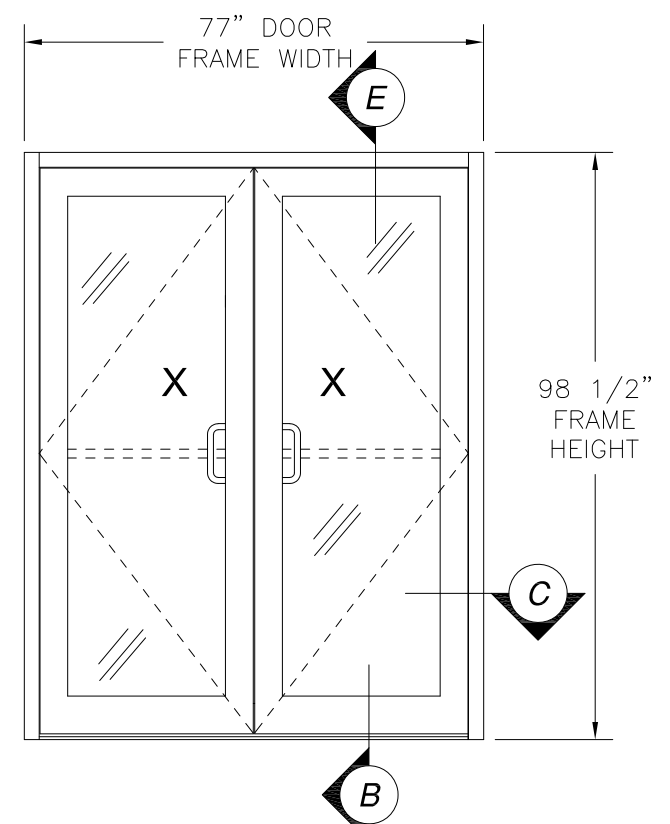
Luis R. Lomas P.E.
FL No.: 62514

REVISIONS			
REV	DESCRIPTION	DATE	APPROVED
C	CHANGE MANUFACTURER'S NAME	03/23/2023	R.L.

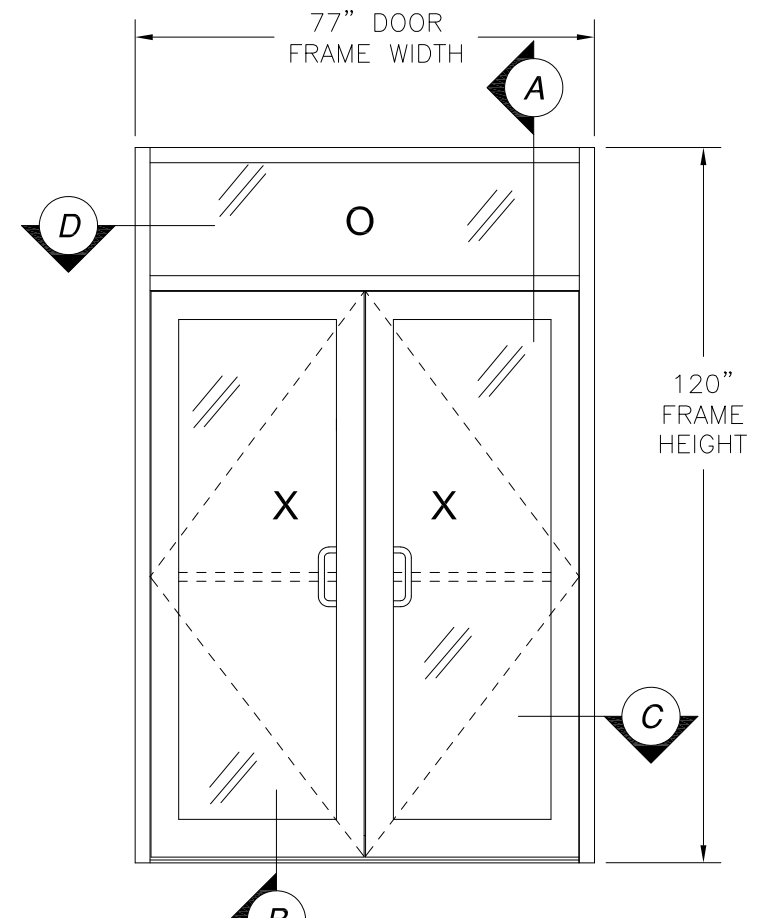


SINGLE

SINGLE W/TRANSOM



DOUBLE



DOUBLE W/TRANSOM

INSTALLED WITH WATER THRESHOLD
(PARTS #5, #6 AND #33)

DESIGN PRESSURE RATING	IMPACT RATING
±65PSF	LARGE MISSILE IMPACT

INSTALLED WITH AIR THRESHOLD (PART #7)

DESIGN PRESSURE RATING	IMPACT RATING
±65PSF	LARGE MISSILE IMPACT
THIS SYSTEM WAS NOT TESTED FOR WATER INFILTRATION AND IS TO BE INSTALLED ONLY WHERE THE WATER REQUIREMENT IS NOT NEEDED	

Design pressure chart (PSF)

Panel Height (in)	Single Panel Width (in)					
	24.00		30.00		35.75	
	Pos	Neg	Pos	Neg	Pos	Neg
80.00	65.0	65.0	65.0	65.0	65.0	65.0
84.00	65.0	65.0	65.0	65.0	65.0	65.0
90.00	65.0	65.0	65.0	65.0	65.0	65.0
95.50	65.0	65.0	65.0	65.0	65.0	65.0

SEE RATING BOXES FOR WATER LIMITATIONS.

INSTALLED WITH AIR OR WATER THRESHOLD
(PARTS #7 OR #5, #6 AND #33)

DESIGN PRESSURE RATING	IMPACT RATING
±65PSF	LARGE MISSILE IMPACT
THIS SYSTEM WAS NOT TESTED FOR WATER INFILTRATION AND IS TO BE INSTALLED ONLY WHERE THE WATER REQUIREMENT IS NOT NEEDED	

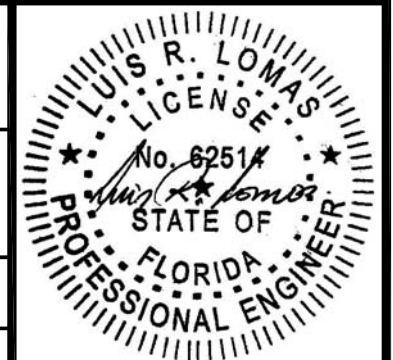
SIGNED: 03/23/2023

US ALUMINUM
950 SOLON RD.
WAXAHACHIE, TX 75165

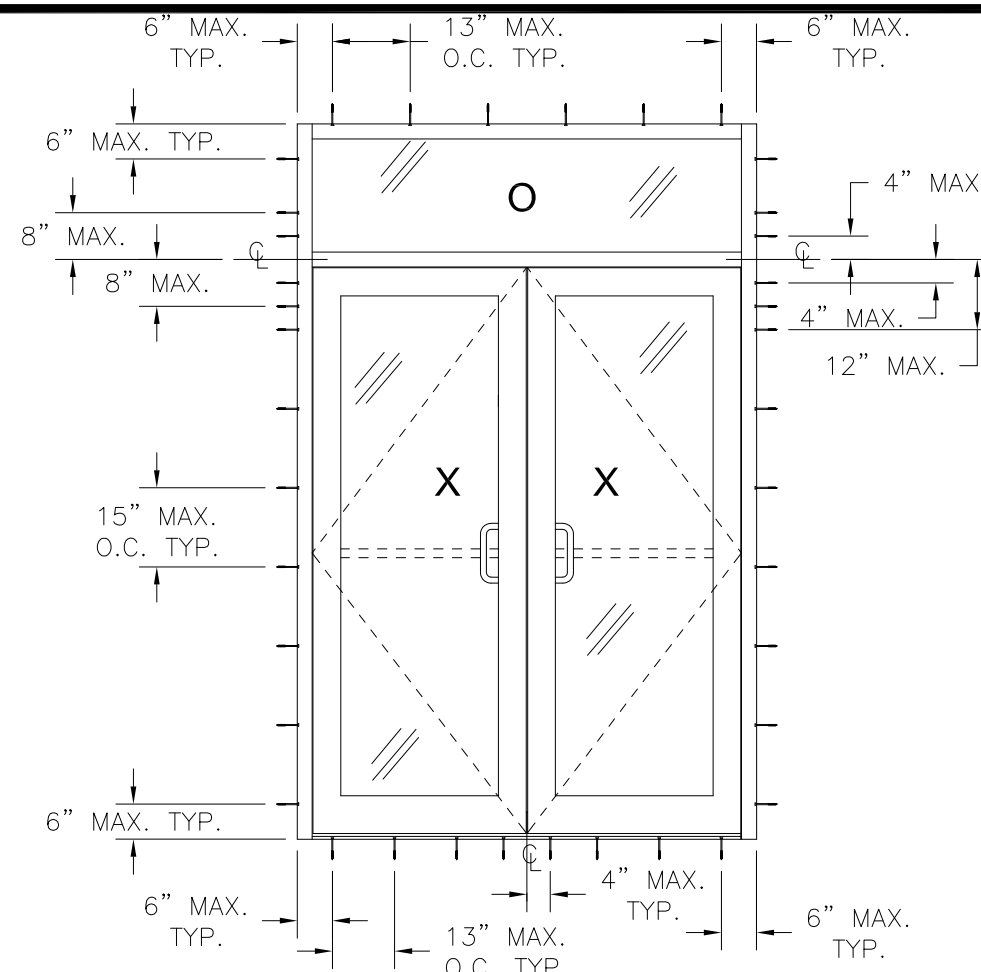
SERIES BT601/IT600 STORM FRONT OS ALUMINUM STOREFRONT DOOR SYSTEM – LMI
ADDITIONAL APPROVED CONFIGURATIONS

DRAWN: TJH	DWG NO. 08-01577	REV C
SCALE NTS	DATE 01/11/10	SHEET 3 OF 14

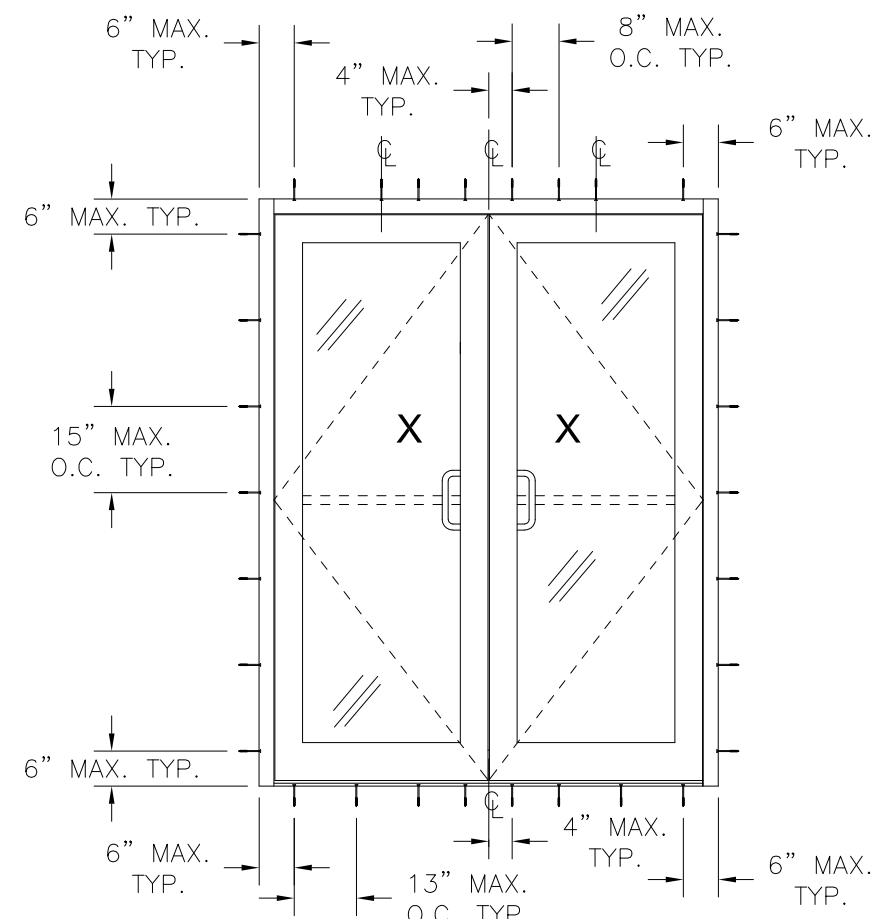
L. ROBERTO LOMAS P.E.
400 S. PALM AVE, INDIALANTIC, FL 32903
434-688-0609 rllomas@rlomaspe.com



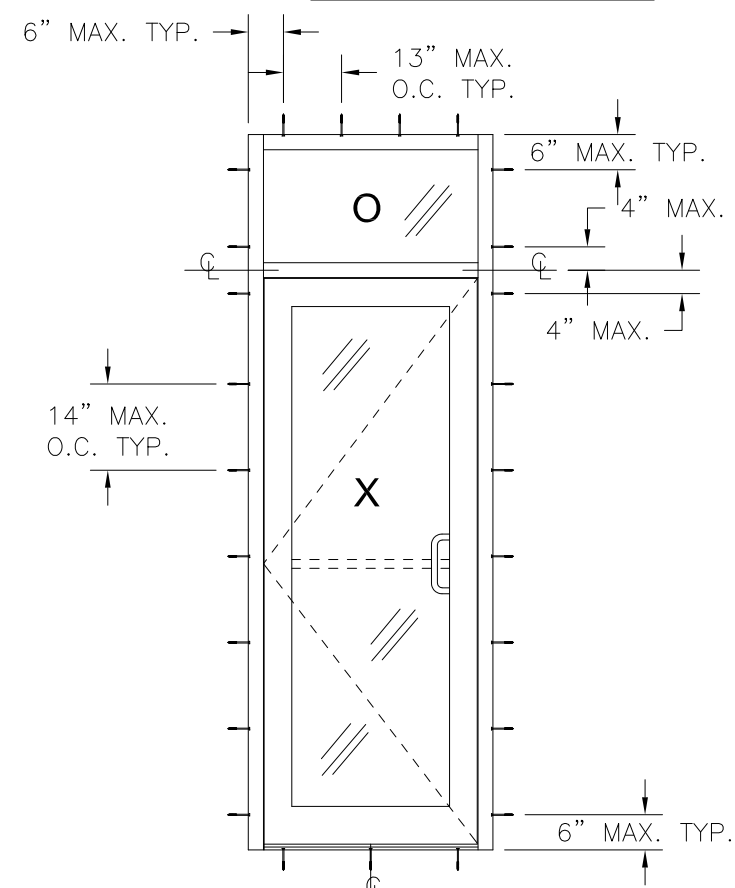
Luis R. Lomas P.E.
FL No.: 62514



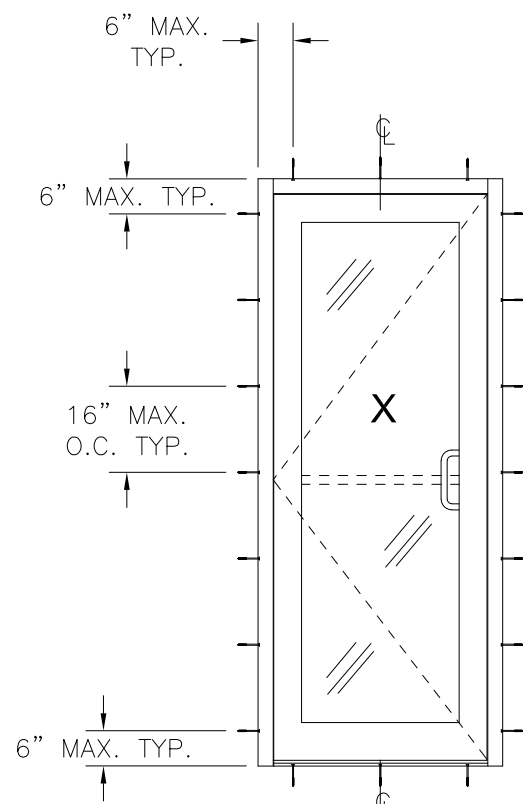
DOUBLE W/TRANSOM



DOUBLE



SINGLE W/TRANSOM



REVISIONS			
REV	DESCRIPTION	DATE	APPROVED
C	CHANGE MANUFACTURER'S NAME	03/23/2023	R.L.

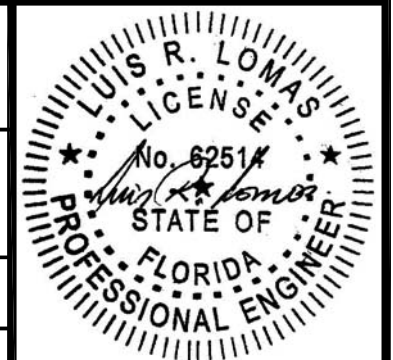
US ALUMINUM
 950 SOLON RD.
 WAXAHACHIE, TX 75165

SERIES BT601/IT600 STORM FRONT OS ALUMINUM
 STOREFRONT DOOR SYSTEM – LMI
 ANCHORING LAYOUT AND NOTES

DRAWN: TJH	DWG NO. 08-01577	REV C
SCALE NTS	DATE 01/11/10	SHEET 4 OF 14

L. ROBERTO LOMAS P.E.
 400 S. PALM AVE, INDIALANTIC, FL 32903
 434-688-0609 rllomas@lrlomaspe.com

SIGNED: 03/23/2023

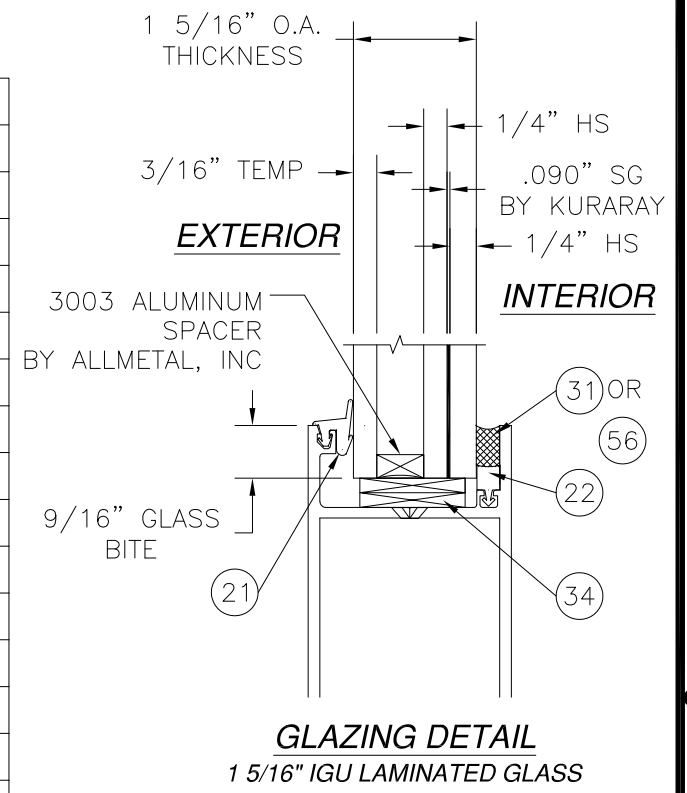


Luis R. Lomas P.E.
 FL No.: 62514

PARTS LIST				
NO.	PART NUMBER	DESCRIPTION	MANUFACTURER	MATERIAL
1	BT805	VERTICAL JAMB	US ALUMINUM	ALUMINUM 6063-T5
2	IG568	OPTIONAL DOOR HEADER	US ALUMINUM	ALUMINUM 6063-T5
3	BT852	HEAD MULLION	US ALUMINUM	ALUMINUM 6063-T5
4		NOT USED		
5	BT870	SUB-SILL	US ALUMINUM	ALUMINUM 6063-T5
6	TH100	BT601 WATER THRESHOLD	US ALUMINUM	ALUMINUM 6063-T5
7	TH821	AIR THRESHOLD	US ALUMINUM	ALUMINUM 6063-T5
8	BT853	DOOR HEADER	US ALUMINUM	ALUMINUM 6063-T5
9	BT804	VERTICAL MULLION FILLER	US ALUMINUM	ALUMINUM 6063-T5
10	BT862	HORIZONTAL MULLION	US ALUMINUM	ALUMINUM 6063-T5
11	BR863	BT601 GLASS STOP	US ALUMINUM	ALUMINUM 6063-T5
12	BR847	DOOR STOP ADAPTER	US ALUMINUM	ALUMINUM 6063-T5
13	EC870	END DAM	US ALUMINUM	A-245
14	BT867	HORIZONTAL HEADER	US ALUMINUM	ALUMINUM 6063-T5
15	IE502	TOP RAIL	US ALUMINUM	ALUMINUM 6063-T5
16	BT815	VERTICAL MULLION	US ALUMINUM	ALUMINUM 6063-T5
17	IE150	DOOR GLAZING STOP	US ALUMINUM	ALUMINUM 6063-T5
18	BT835	HEAVY DUTY VERTICAL MULL	US ALUMINUM	ALUMINUM 6063-T5
19	IE501	16500 BOTTOM RAIL	US ALUMINUM	ALUMINUM 6063-T5
20	NP801	DOOR WEATHERSTRIP	US ALUMINUM	
21	NP225	TOP LOAD GASKET	US ALUMINUM	EPDMB70 DUROMETER
22	SP250	GLAZING SEAL	US ALUMINUM	SCR
23	BT872	HORIZONTAL SILL	US ALUMINUM	ALUMINUM 6063-T5
24	SB117	SETTING BLOCK - 1 1/4" GLASS	US ALUMINUM	EPDM 85 DUROMETER
25	ST266	#12 x 1" HWH SMS		
26	ST268	#12 x 3/4" HWH SMS		
27		LARGE MISSILE IMPACT GLASS		
28		8GA. STEEL STIFFENER HEAVY	US ALUMINUM	A36 MILD STEEL
29		NOT USED		
30	ST035	#10 x 5/8" FH SMS		
31	DOW 995	GLAZING COMPOUND	DOW CORNING	SILICONE
32	CB901	6" CORNER BLOCK	US ALUMINUM	
33	TH804	HP WATER TRESHOLD INSERT	US ALUMINUM	ALUMINUM 6063-T5
34	D917	SETTING BLOCK	US ALUMINUM	EPDM 85 DUROMETER
35	IE560	INACTIVE STILE	US ALUMINUM	ALUMINUM 6063-T5
36	IG146	DOOR STOP	US ALUMINUM	ALUMINUM 6063-T5
37	IG047/IG046	DOOR STOP INSERT	US ALUMINUM	ALUMINUM 6063-T5
38	IE550	ACTIVE STILE	US ALUMINUM	ALUMINUM 6063-T5
39	IE520	HINGE STILE	US ALUMINUM	ALUMINUM 6063-T5
40	W-510	DOOR WEATHERSTRIP	US ALUMINUM	

PARTS LIST				
NO.	PART NUMBER	DESCRIPTION	MANUFACTURER	MATERIAL
41	CB802	SHEAR CHANNEL	US ALUMINUM	ALUMINUM 6063-T5
42	AHT 8	PANIC BAR	AHT	
43	1953A-450	STANDARD LOCKSET	ADAMS RITE	
44	4111	CLOSER	LCN	
45	1461	SURFACE CLOSER	LCN	
46	20-330	OHCC CLOSER	JACKSON	
47	2030	OHCC CLOSER	LCN	
48	CL045	SURFACE CLOSER	CR LAWRENCE	
49		FLUSH BOLT	US ALUMINUM	
50		FLUSH BOLT	IVES	
51		1 1/2" BUTT HINGE PAIR	HAGER	
52	CB901	2 3/8" CORNER BLOCK	US ALUMINUM	
53	ST197	#8 x 3/8" PH SMS		
54	DN350	AJUSTABLE ASTRAGAL	US ALUMINUM	ALUMINUM 6063-T5
55		NOT USED		
56	PROGLAZE SSG	GLAZING COMPOUND	TREMCO	SILICONE
57	SPECTRUM 2	PERIMETER SEAL	TREMCO	SILICONE
58	DOW 795	PERIMETER SEAL	DOW CORNING	SILICONE
59		3/8" - 16 x 3" HH BOLT		
60	TC900	11GA. THRESHOLD CLIP	US ALUMINUM	COLD ROLLED STEEL
61		#12-24 x 1/4" SCREW		
62	H-61239	VERTICAL MULLION	US ALUMINUM	ALUMINUM 6063-T5

REVISIONS			
REV	DESCRIPTION	DATE	APPROVED
C	CHANGE MANUFACTURER'S NAME	03/23/2023	R.L.



SIGNED: 03/23/2023

US ALUMINUM
950 SOLON RD.
WAXAHACHIE, TX 75165

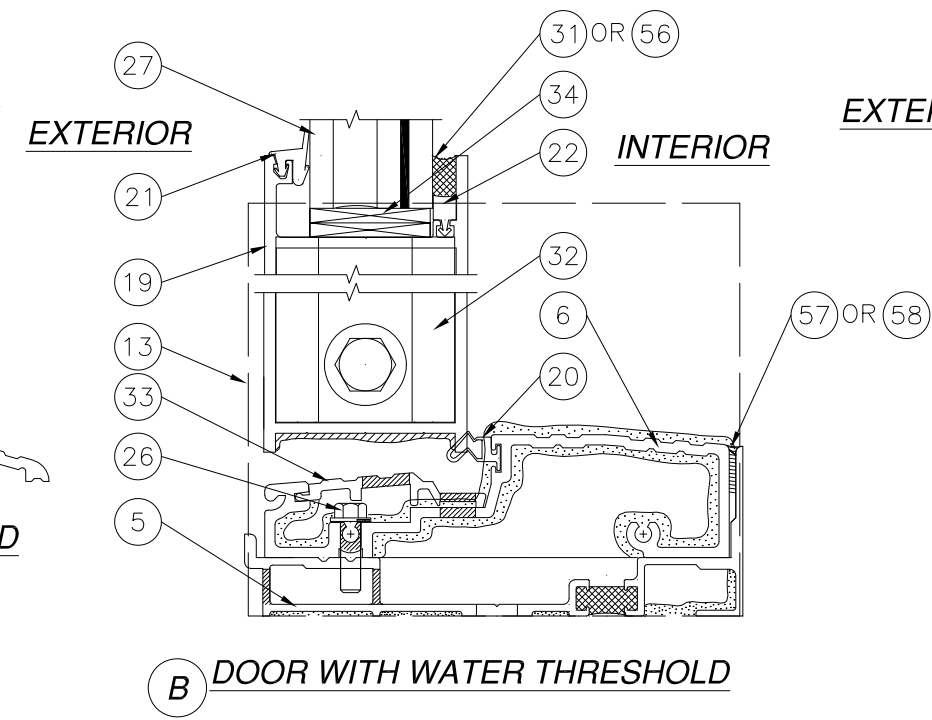
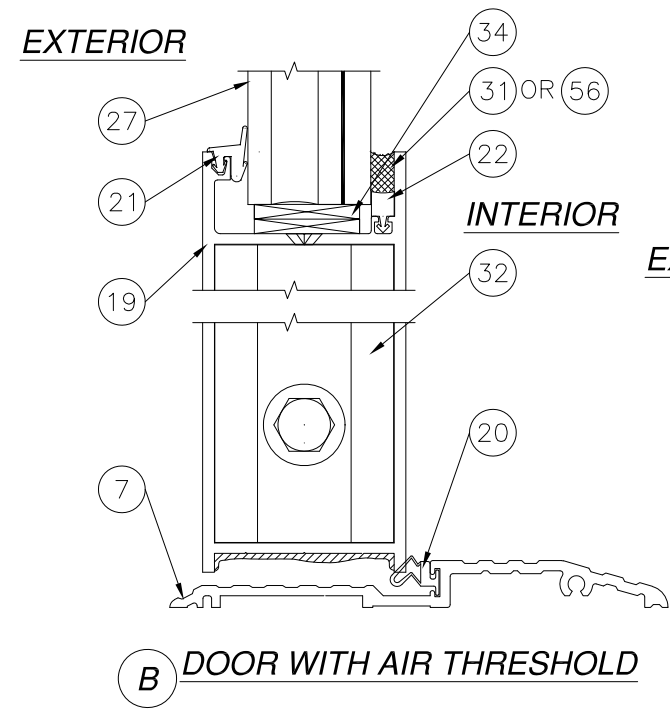
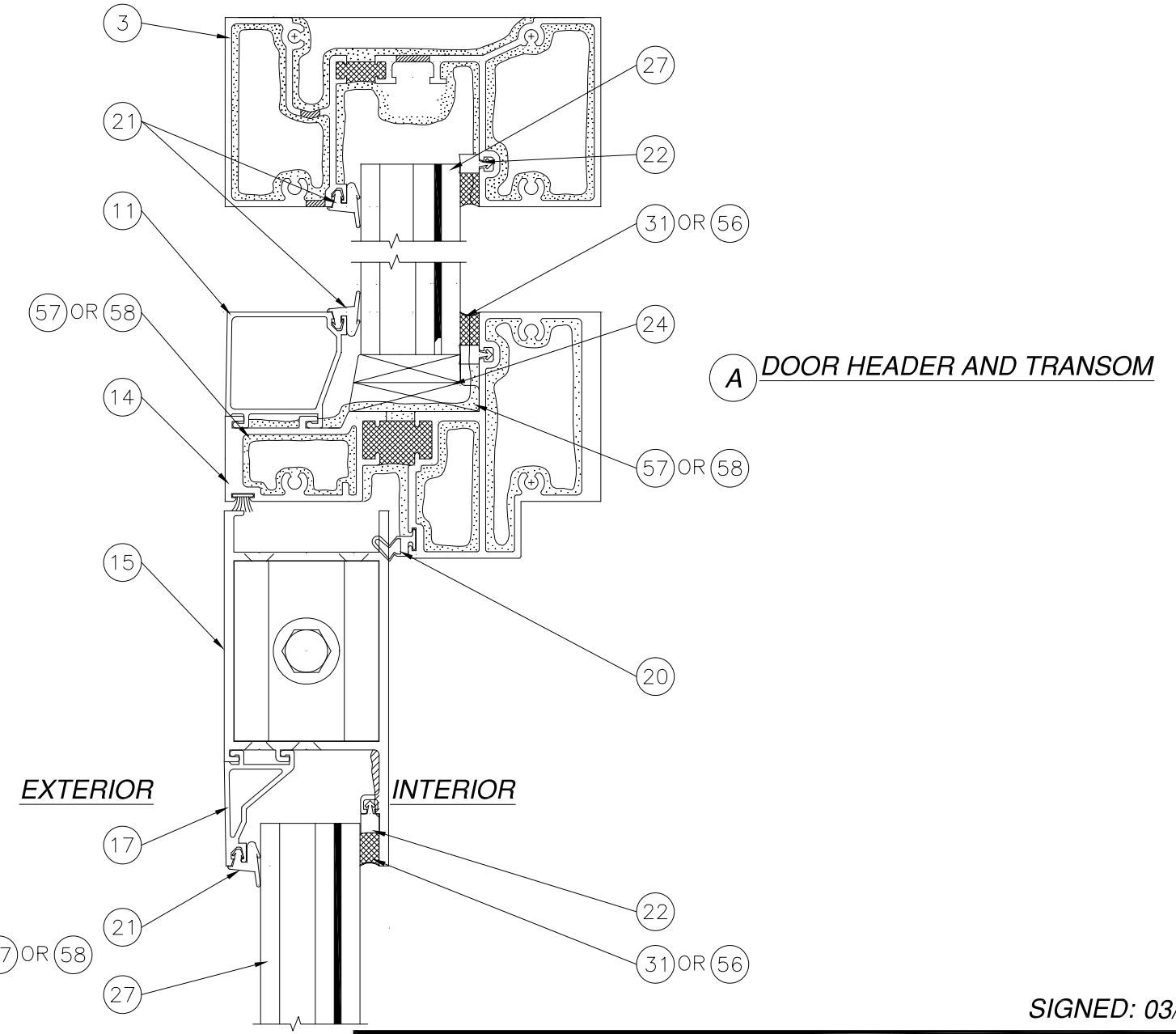
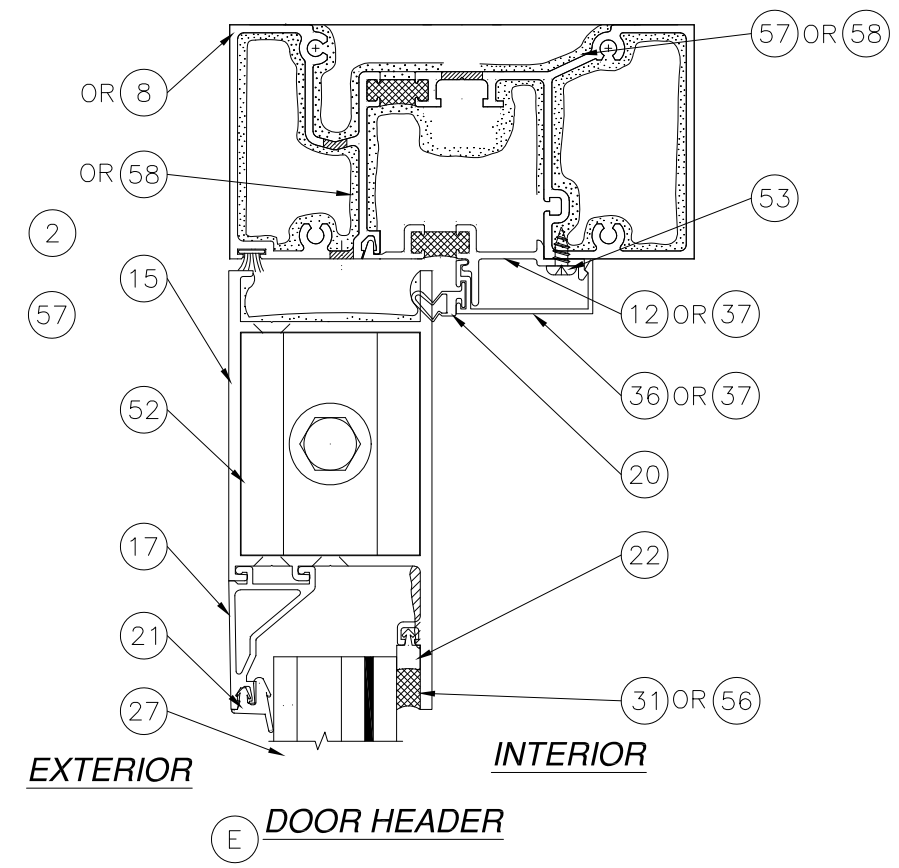
SERIES BT601/IT600 STORM FRONT OS ALUMINUM
STOREFRONT DOOR SYSTEM - LMI
BILL OF MATERIALS AND GLAZING DETAILS

DRAWN: TJH	DWG NO. 08-01577	REV C
SCALE NTS	DATE 01/11/10	SHEET 5 OF 14

L. ROBERTO LOMAS P.E.
400 S. PALM AVE, INDIALANTIC, FL 32903
434-688-0609 rllomas@rlomaspe.com

Luis R. Lomas P.E.
FL No.: 62514

REVISIONS			
REV	DESCRIPTION	DATE	APPROVED
C	CHANGE MANUFACTURER'S NAME	03/23/2023	R.L.



NOTE: FOR ANCHORING TO SUBSTRATE SEE SHEETS 8 THRU 11.

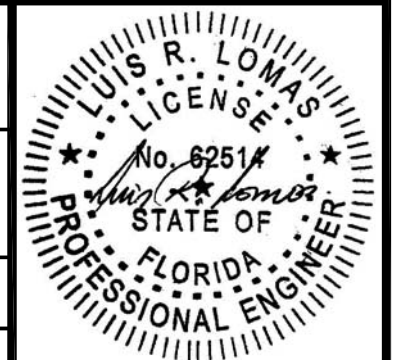
US ALUMINUM
 950 SOLON RD.
 WAXAHACHIE, TX 75165

SERIES BT601/IT600 STORM FRONT OS ALUMINUM
 STOREFRONT DOOR SYSTEM - LMI
 CROSS SECTIONS

DRAWN: TJH	DWG NO. 08-01577	REV C
SCALE NTS	DATE 01/11/10	SHEET 6 OF 14

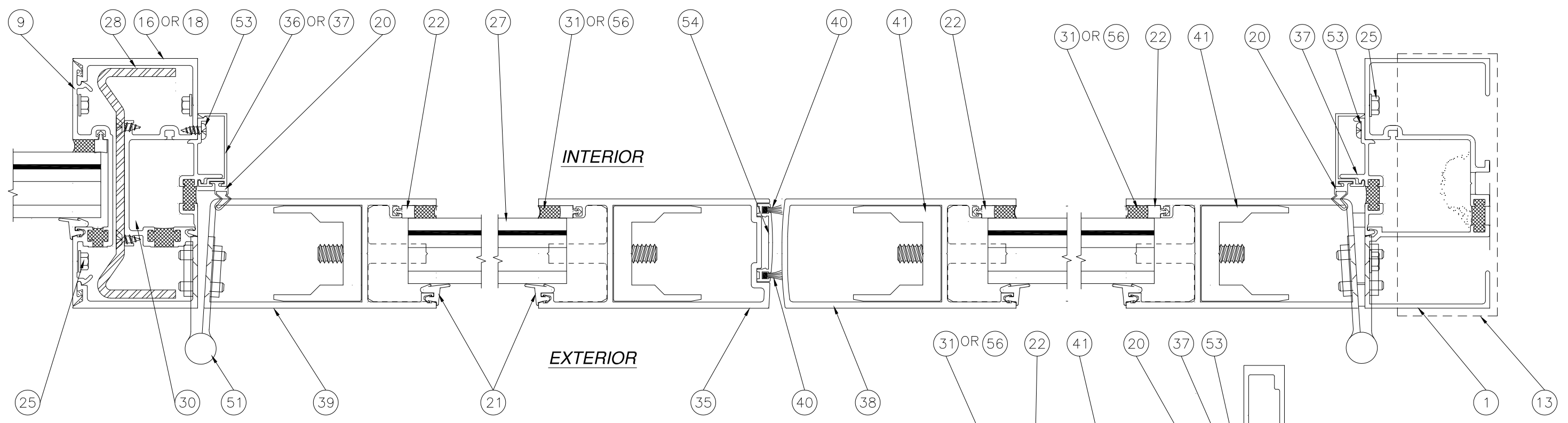
L. ROBERTO LOMAS P.E.
 400 S. PALM AVE, INDIALANTIC, FL 32903
 434-688-0609 rllomas@rlomaspe.com

SIGNED: 03/23/2023



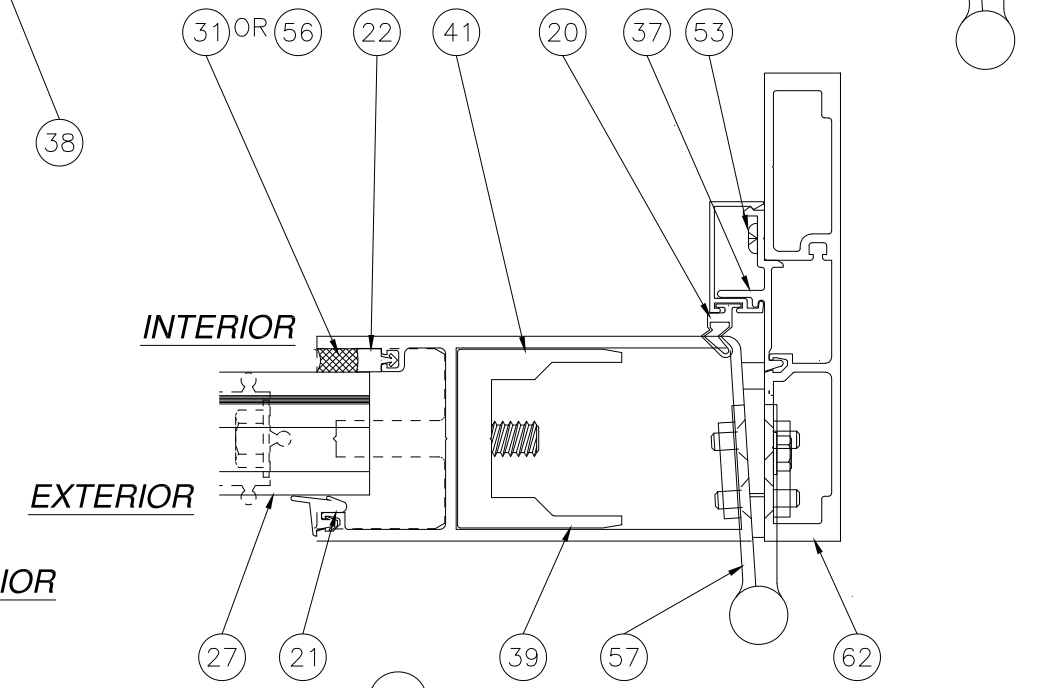
Luis R. Lomas P.E.
 FL No.: 62514

REVISIONS			
REV	DESCRIPTION	DATE	APPROVED
C	CHANGE MANUFACTURER'S NAME	03/23/2023	R.L.



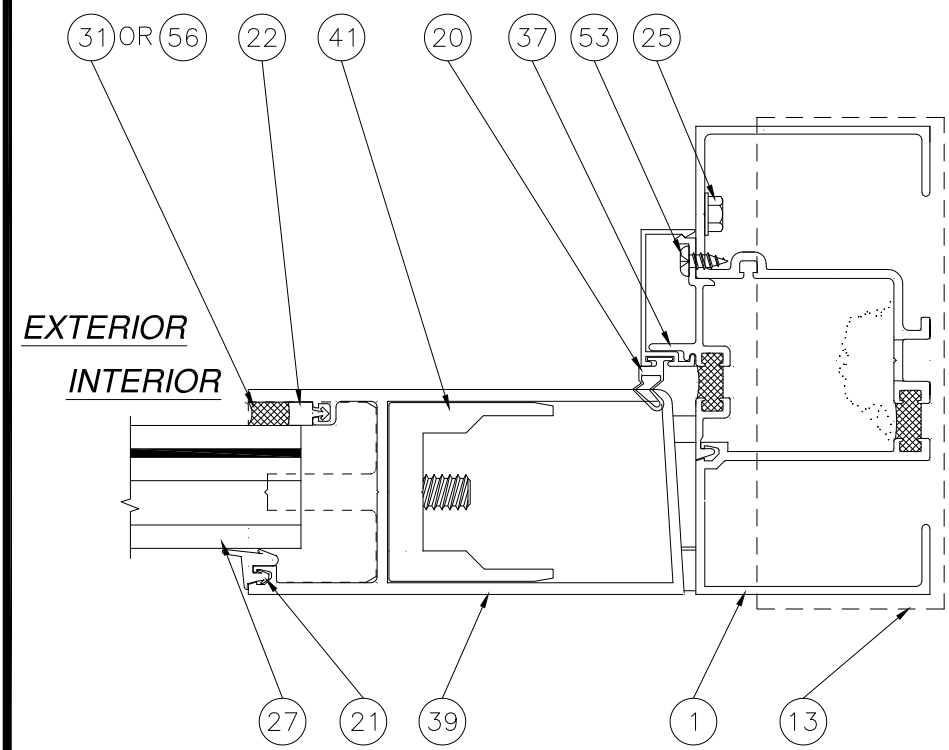
C DOUBLE DOOR

MULLION ASSEMBLY PROPERTIES
 TOTAL Ix (IN TERMS OF ALUMINUM): 18.6538 in⁴
 Sx ALUMINUM: 7.307 in³

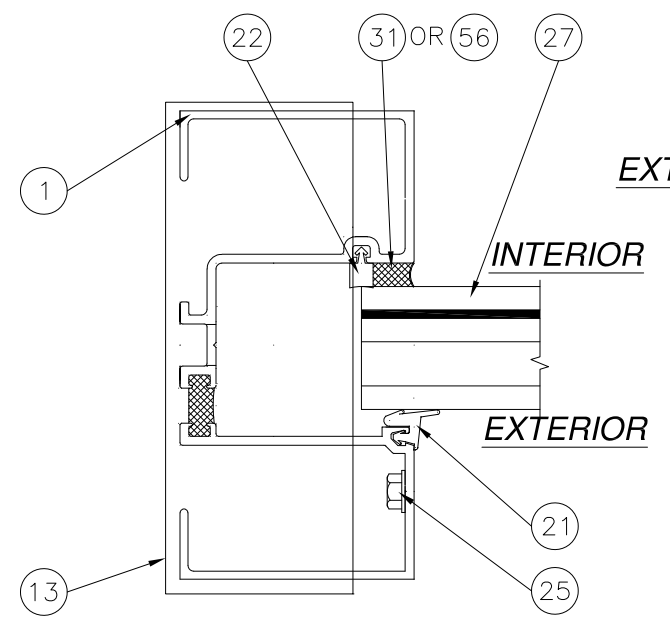


C HEAD OR JAMB WITH OPTIONAL FRAME

SIGNED: 03/23/2023



F LOCK STILE TO JAMB



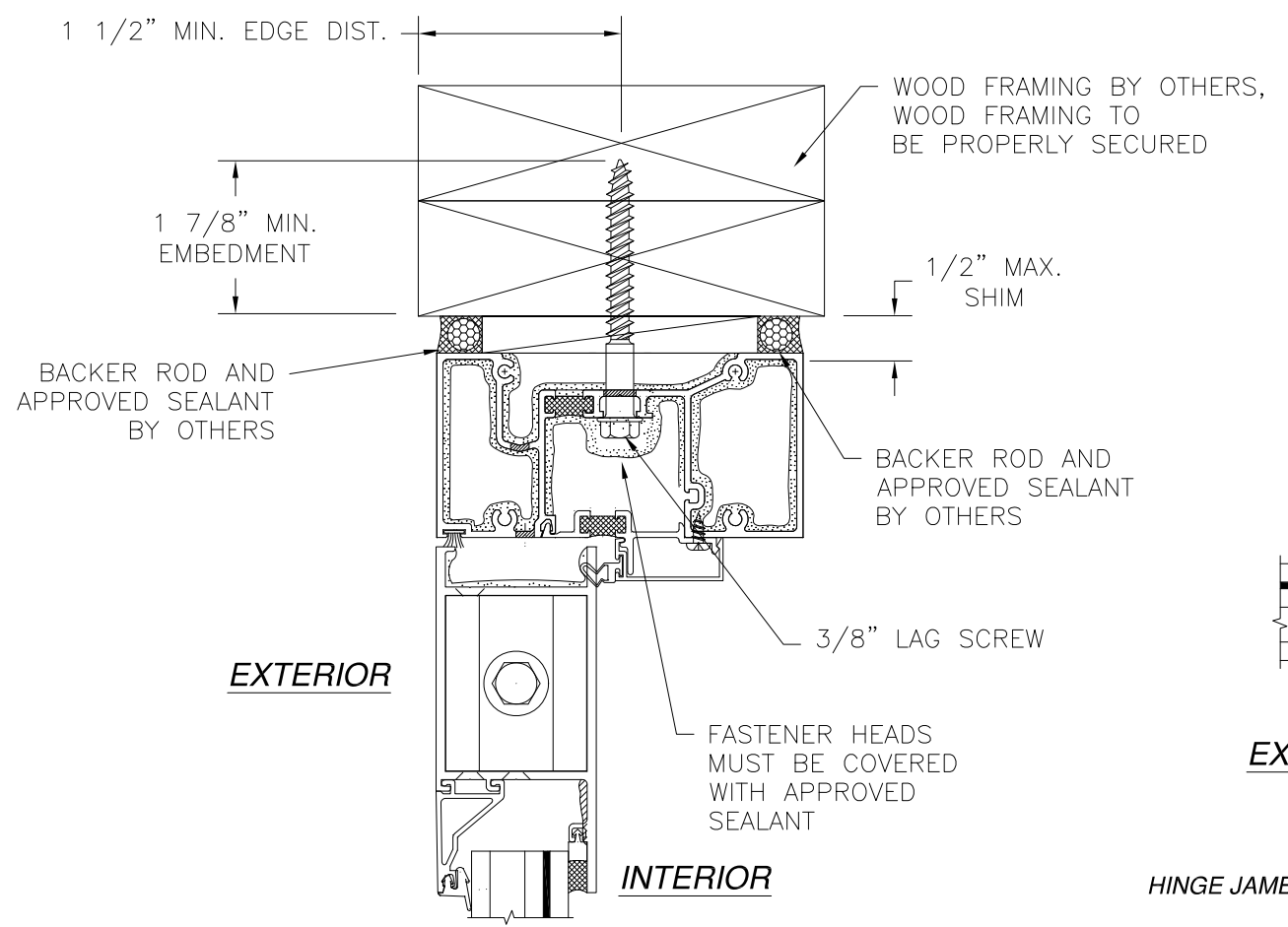
D TRANSOM JAMB

NOTE: FOR ANCHORING TO SUBSTRATE SEE SHEETS 8 THRU 11.

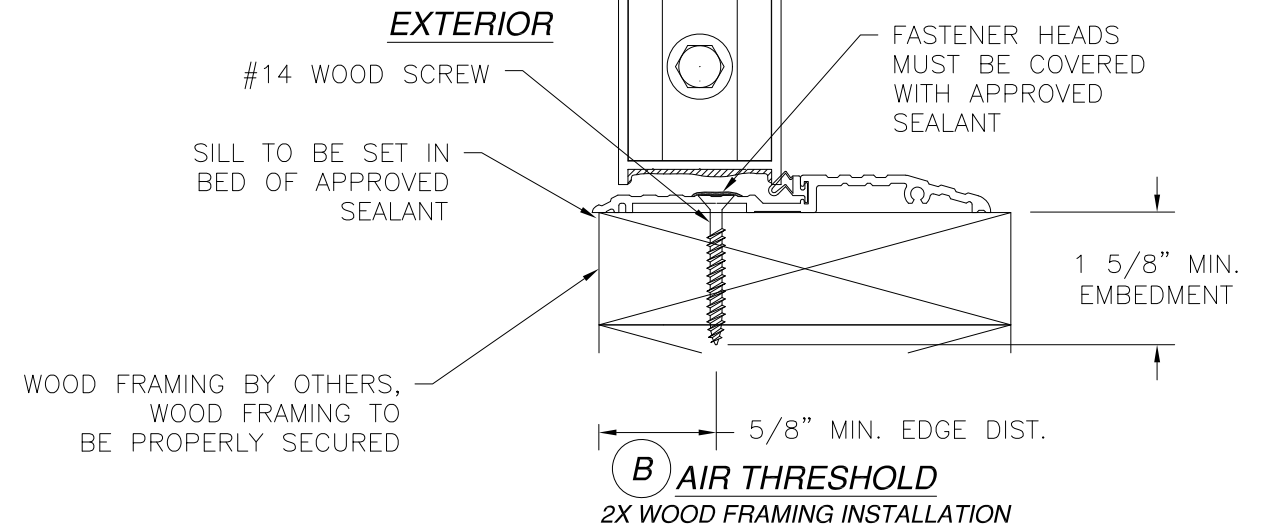
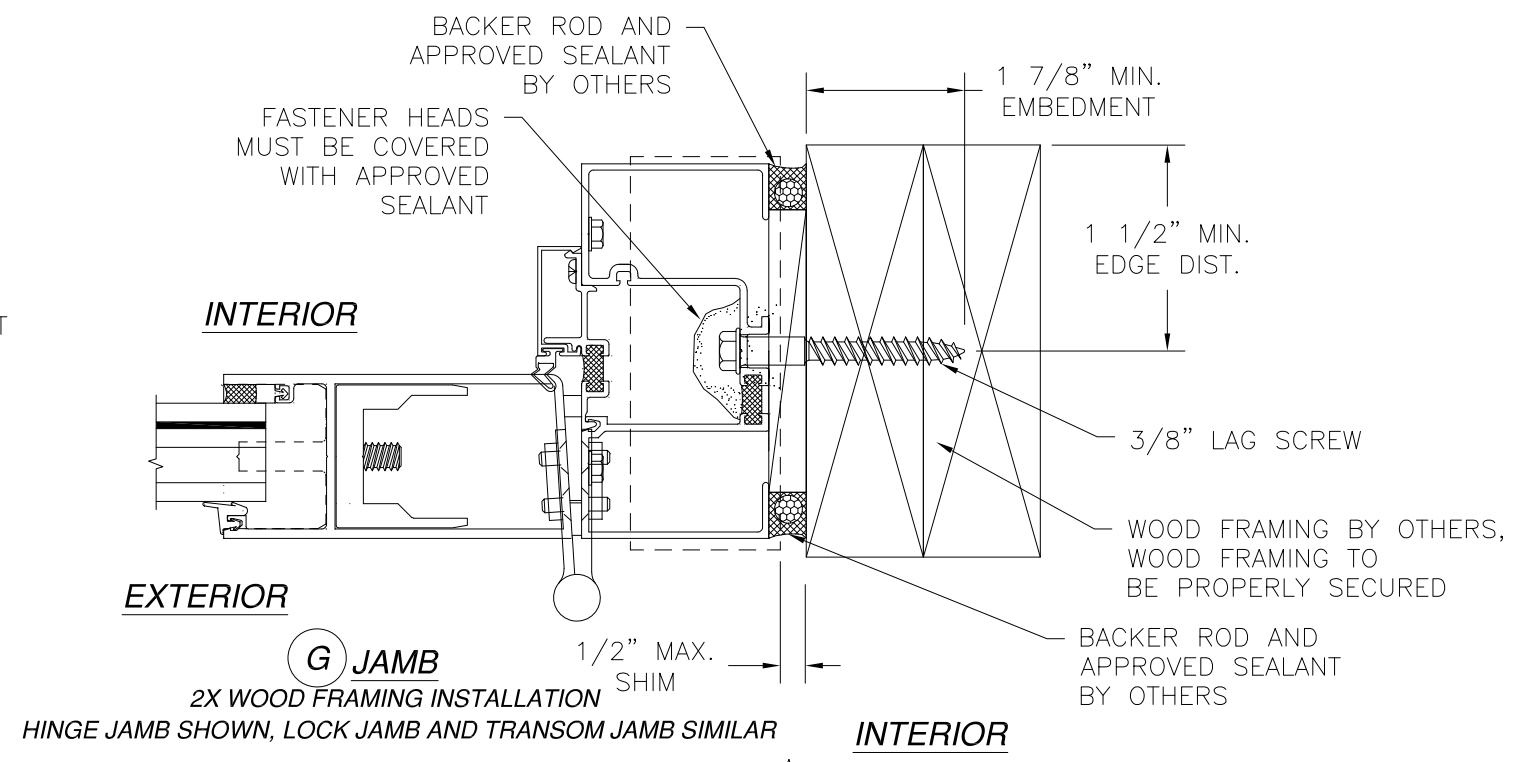
US ALUMINUM 950 SOLON RD. WAXAHACHIE, TX 75165		
SERIES BT601/IT600 STORM FRONT OS ALUMINUM STOREFRONT DOOR SYSTEM - LMI CROSS SECTIONS		
DRAWN: TJH	DWG NO. 08-01577	REV C
SCALE NTS	DATE 01/11/10	SHEET 7 OF 14
L. ROBERTO LOMAS P.E. 400 S. PALM AVE, INDIAN LANTIC, FL 32903 434-688-0609 rllomas@lrlomaspe.com		

Luis R. Lomas P.E.
 FL No.: 62514

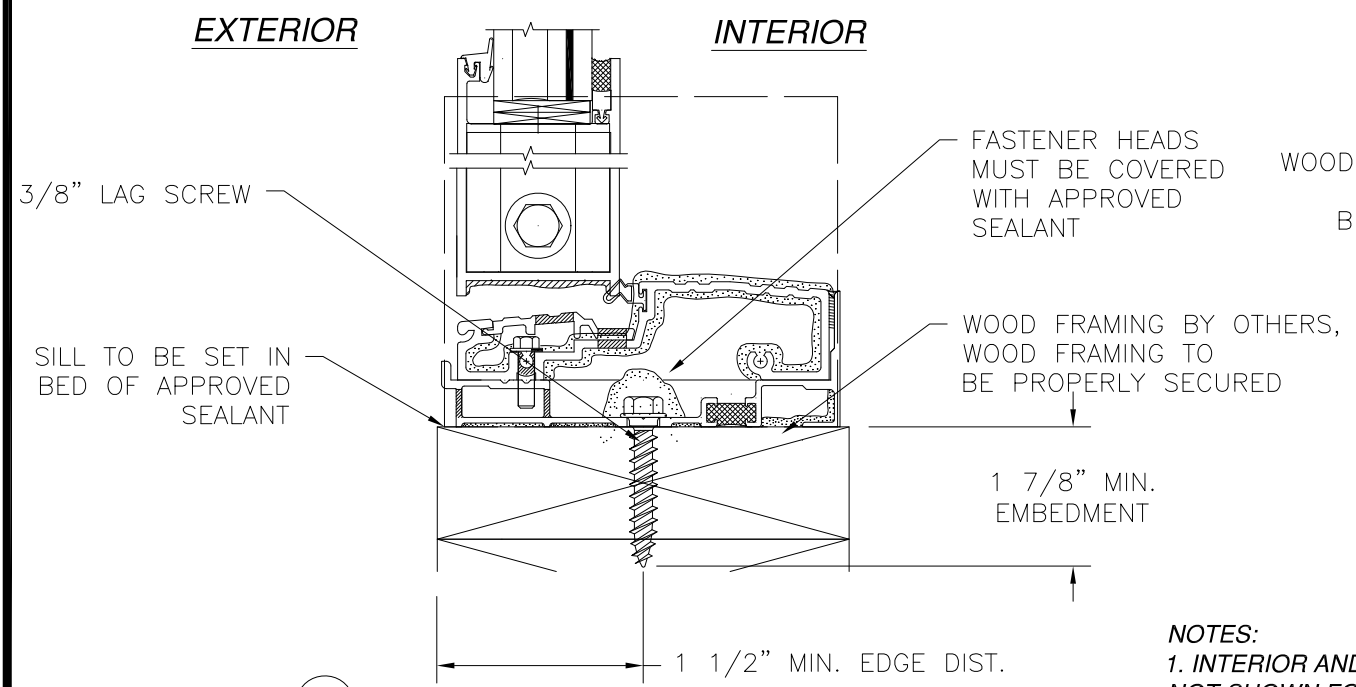
REVISIONS			
REV	DESCRIPTION	DATE	APPROVED
C	CHANGE MANUFACTURER'S NAME	03/23/2023	R.L.



(E) DOOR HEADER
2X WOOD FRAMING INSTALLATION TRANSOM HEADER SIMILAR



SIGNED: 03/23/2023



(B) WATER THRESHOLD
2X WOOD FRAMING INSTALLATION

NOTES:
1. INTERIOR AND EXTERIOR FINISHES, BY OTHERS, NOT SHOWN FOR CLARITY.
2. PERIMETER AND JOINT SEALANT BY OTHERS TO BE DESIGNED IN ACCORDANCE WITH ASTM E2112

US ALUMINUM
950 SOLON RD.
WAXAHACHIE, TX 75165

SERIES BT601/IT600 STORM FRONT OS ALUMINUM STOREFRONT DOOR SYSTEM - LMI
INSTALLATION DETAILS

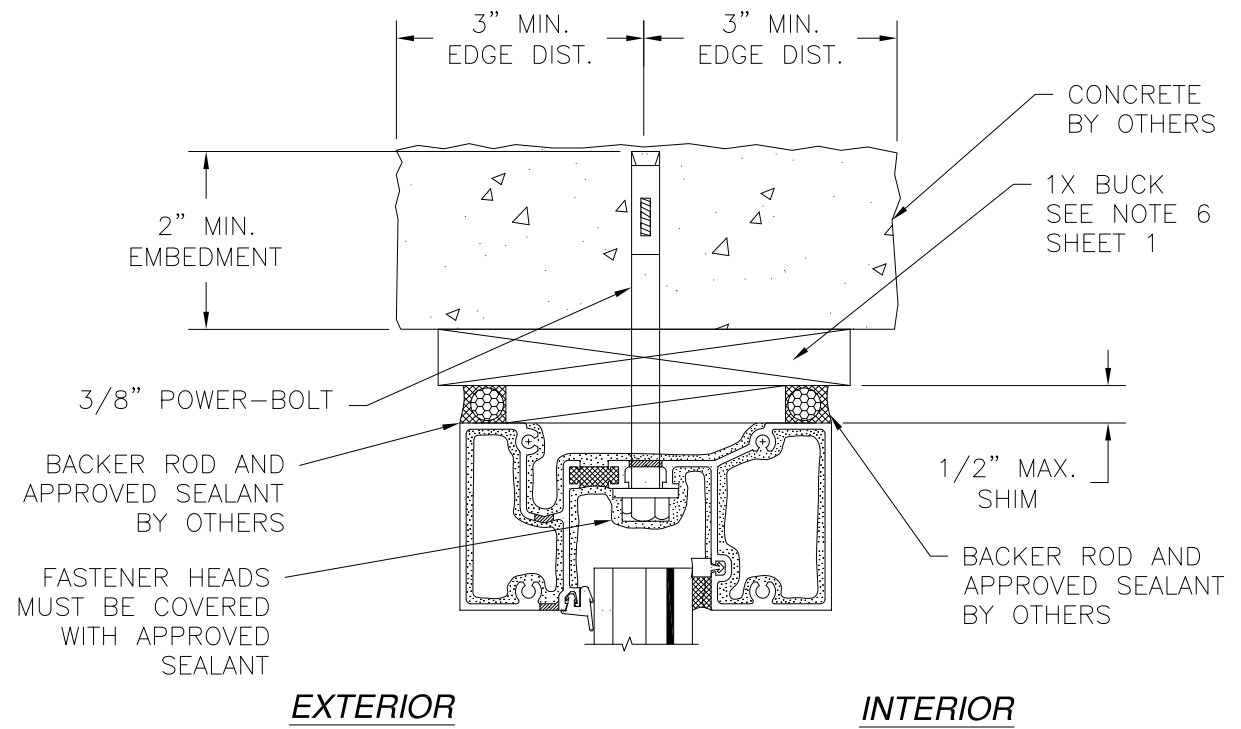
DRAWN: TJH	DWG NO. 08-01577	REV C
SCALE NTS	DATE 01/11/10	SHEET 8 OF 14

L. ROBERTO LOMAS P.E.
400 S. PALM AVE, INDIANLANTIC, FL 32903
434-688-0609 rllomas@rlomaspe.com

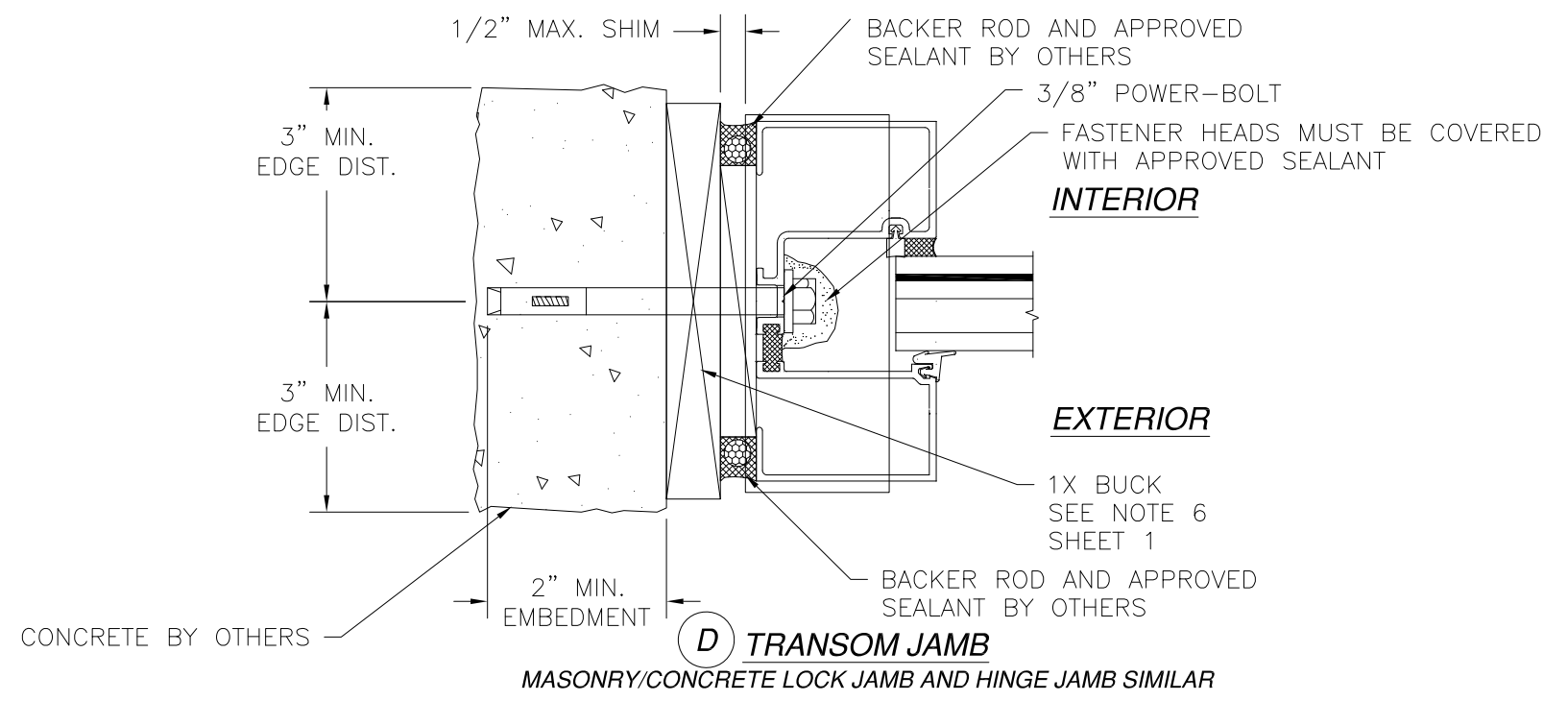
Professional Engineer Seal for Luis R. Lomas, State of Florida, License No. 62514.

Luis R. Lomas P.E.
FL No.: 62514

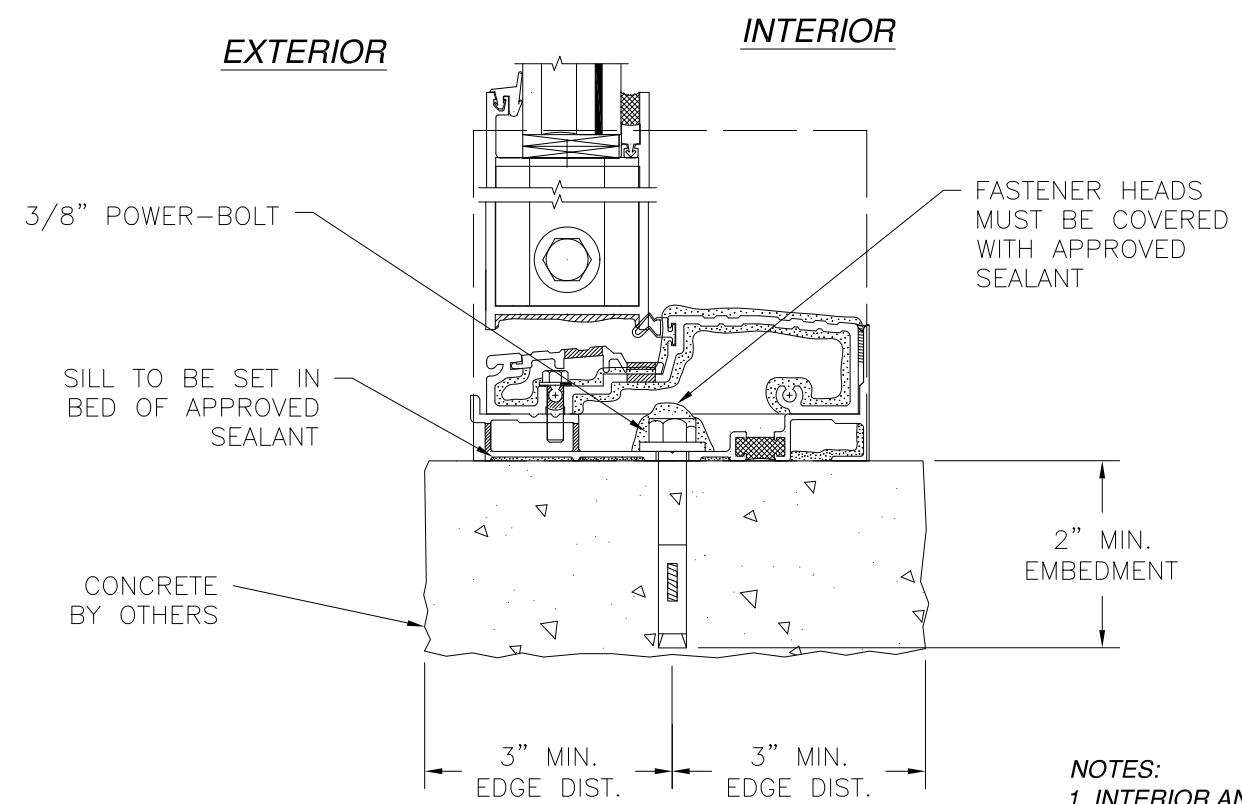
REVISIONS			
REV	DESCRIPTION	DATE	APPROVED
C	CHANGE MANUFACTURER'S NAME	03/23/2023	R.L.



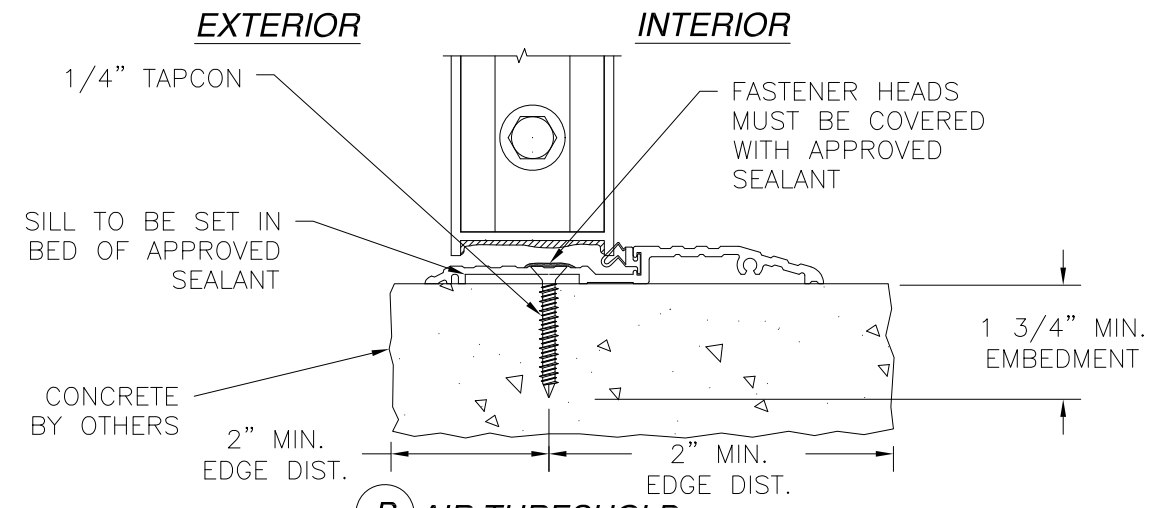
A TRANSOM HEADER
CONCRETE INSTALLATION
DOOR HEADER SIMILAR



D TRANSOM JAMB
MASONRY/CONCRETE LOCK JAMB AND HINGE JAMB SIMILAR



B WATER THRESHOLD
CONCRETE INSTALLATION



B AIR THRESHOLD
CONCRETE INSTALLATION

NOTES:
1. INTERIOR AND EXTERIOR FINISHES, BY OTHERS, NOT SHOWN FOR CLARITY.
2. PERIMETER AND JOINT SEALANT BY OTHERS TO BE DESIGNED IN ACCORDANCE WITH ASTM E2112

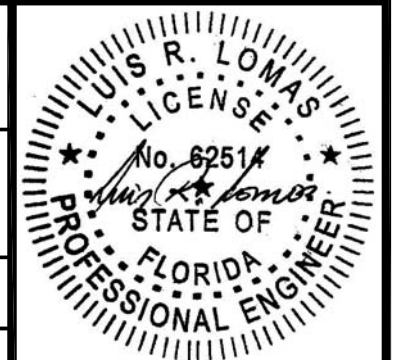
US ALUMINUM
950 SOLON RD.
WAXAHACHIE, TX 75165

SERIES BT601/IT600 STORM FRONT OS ALUMINUM
STOREFRONT DOOR SYSTEM - LMI
INSTALLATION DETAILS

DRAWN: TJH	DWG NO. 08-01577	REV C
SCALE NTS	DATE 01/11/10	SHEET 9 OF 14

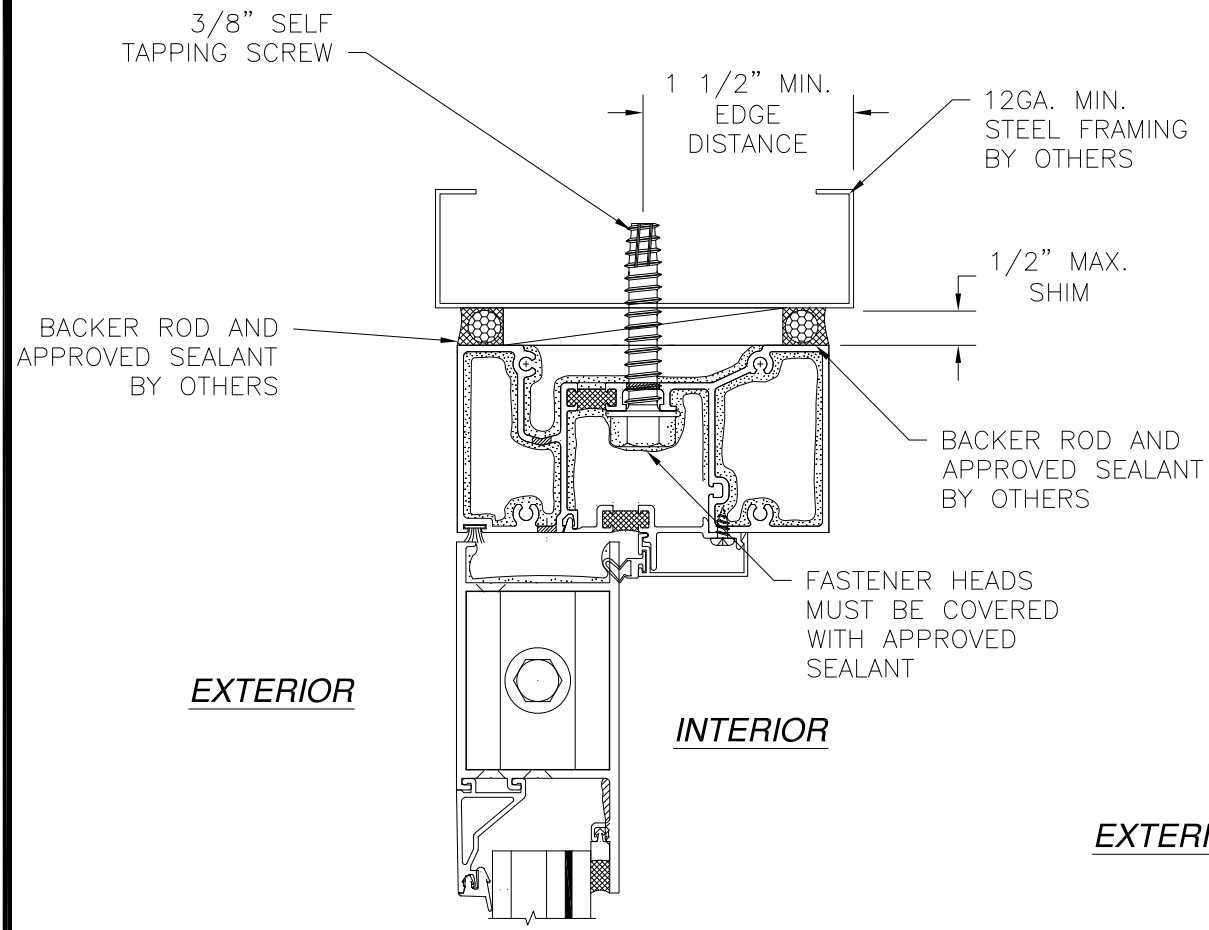
L. ROBERTO LOMAS P.E.
400 S. PALM AVE, INDIAN LANTIC, FL 32903
434-688-0609 rllomas@rlomaspe.com

SIGNED: 03/23/2023

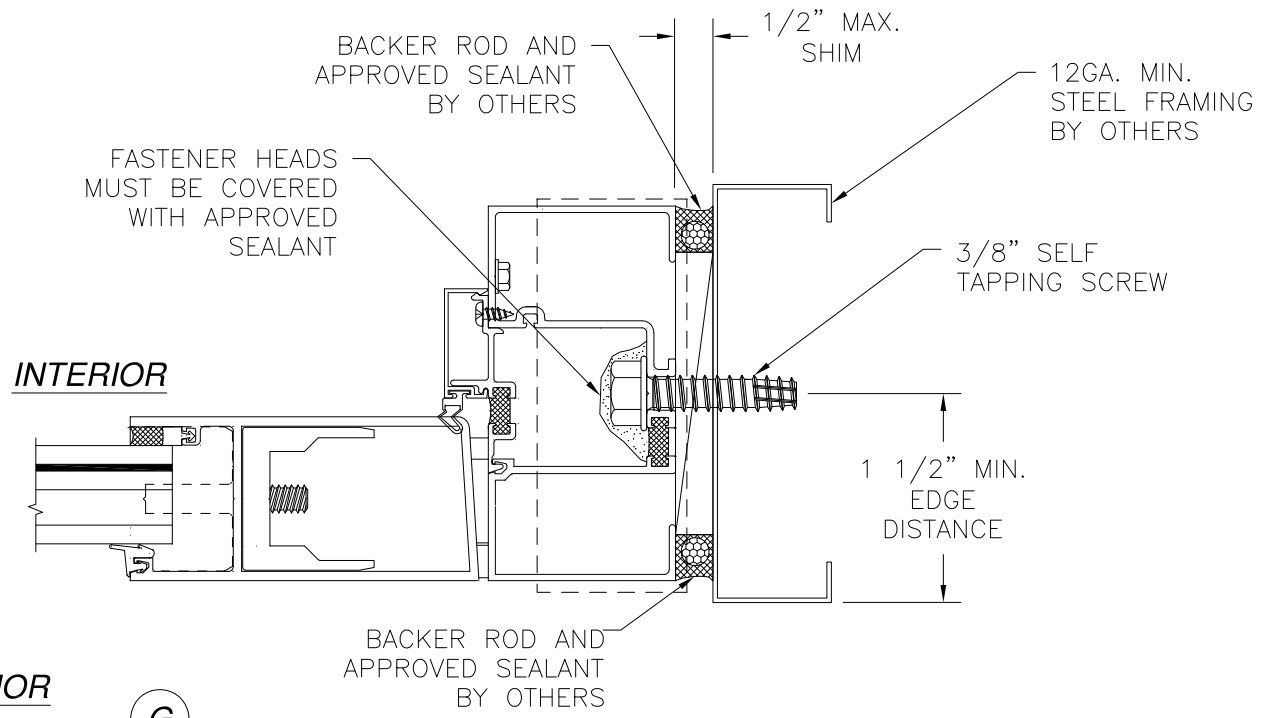


Luis R. Lomas P.E.
FL No.: 62514

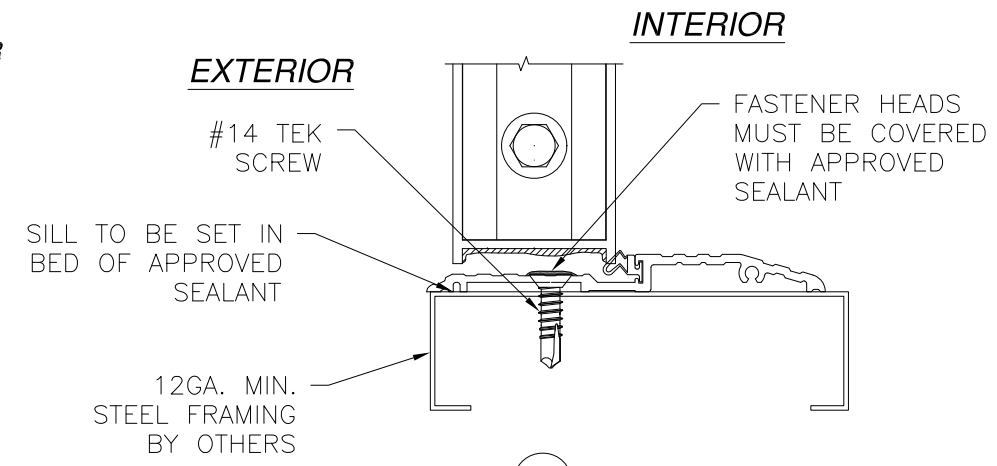
REVISIONS			
REV	DESCRIPTION	DATE	APPROVED
C	CHANGE MANUFACTURER'S NAME	03/23/2023	R.L.



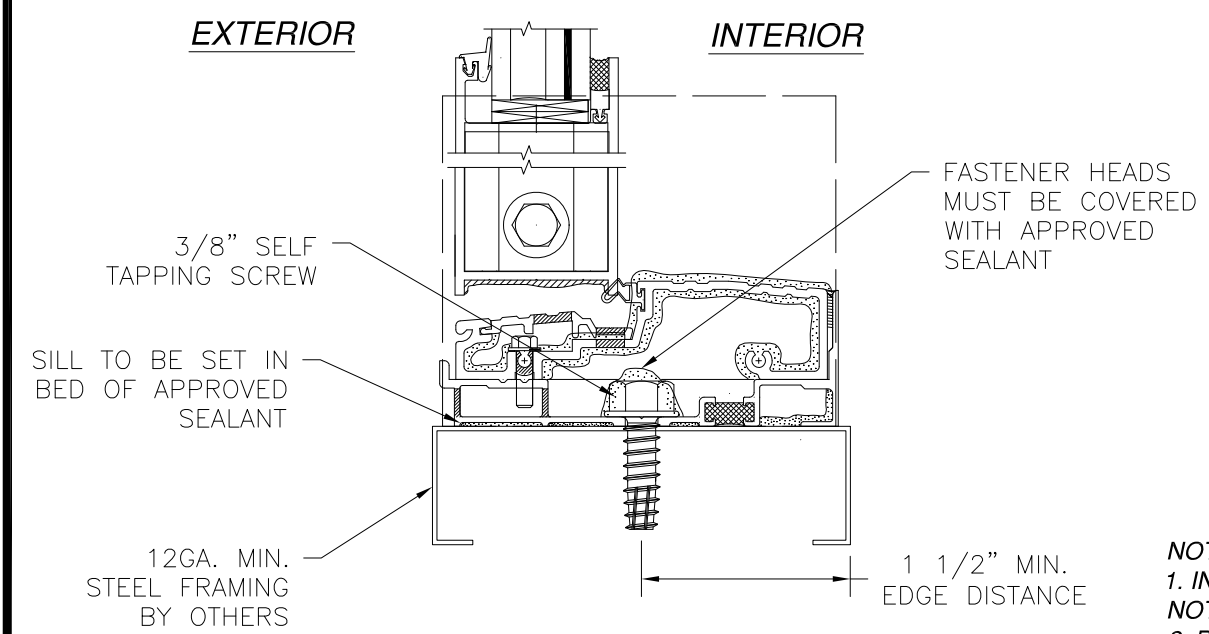
E DOOR HEADER
STEEL FRAMING INSTALLATION
TRANSOM HEADER SIMILAR



G JAMB
STEEL FRAMING INSTALLATION
TRANSOM JAMB AND HINGE JAMB SIMILAR



B AIR THRESHOLD
STEEL FRAMING INSTALLATION



B WATER THRESHOLD
STEEL FRAMING INSTALLATION

NOTES:
1. INTERIOR AND EXTERIOR FINISHES, BY OTHERS, NOT SHOWN FOR CLARITY.
2. PERIMETER AND JOINT SEALANT BY OTHERS TO BE DESIGNED IN ACCORDANCE WITH ASTM E2112

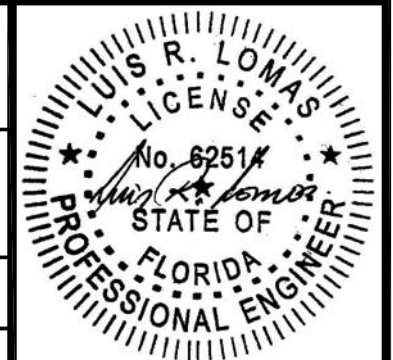
SIGNED: 03/23/2023

US ALUMINUM
950 SOLON RD.
WAXAHACHIE, TX 75165

SERIES BT601/IT600 STORM FRONT OS ALUMINUM STOREFRONT DOOR SYSTEM - LMI
INSTALLATION DETAILS

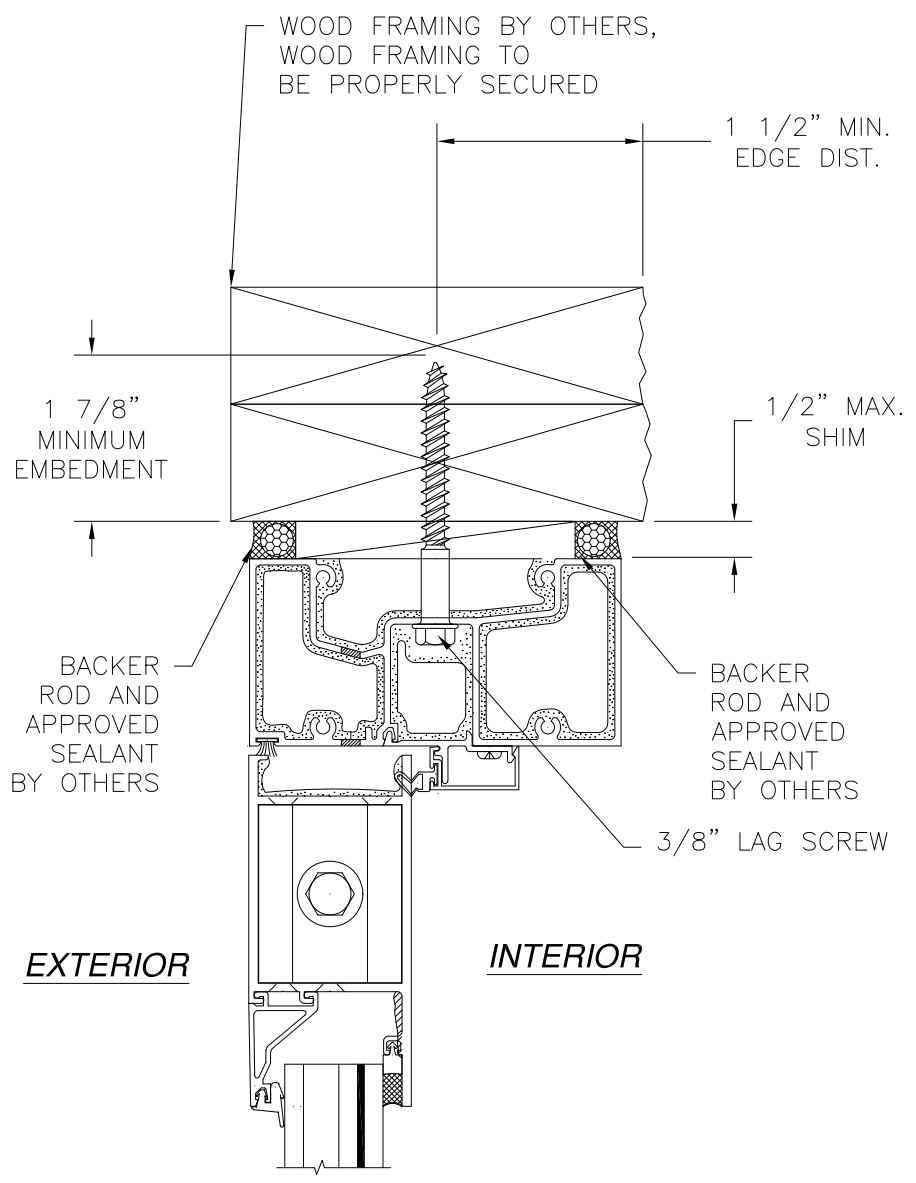
DRAWN: TJH	DWG NO. 08-01577	REV C
SCALE NTS	DATE 01/11/10	SHEET 10 OF 14

L. ROBERTO LOMAS P.E.
400 S. PALM AVE, INDIAN LANTIC, FL 32903
434-688-0609 rllomas@rlomaspe.com

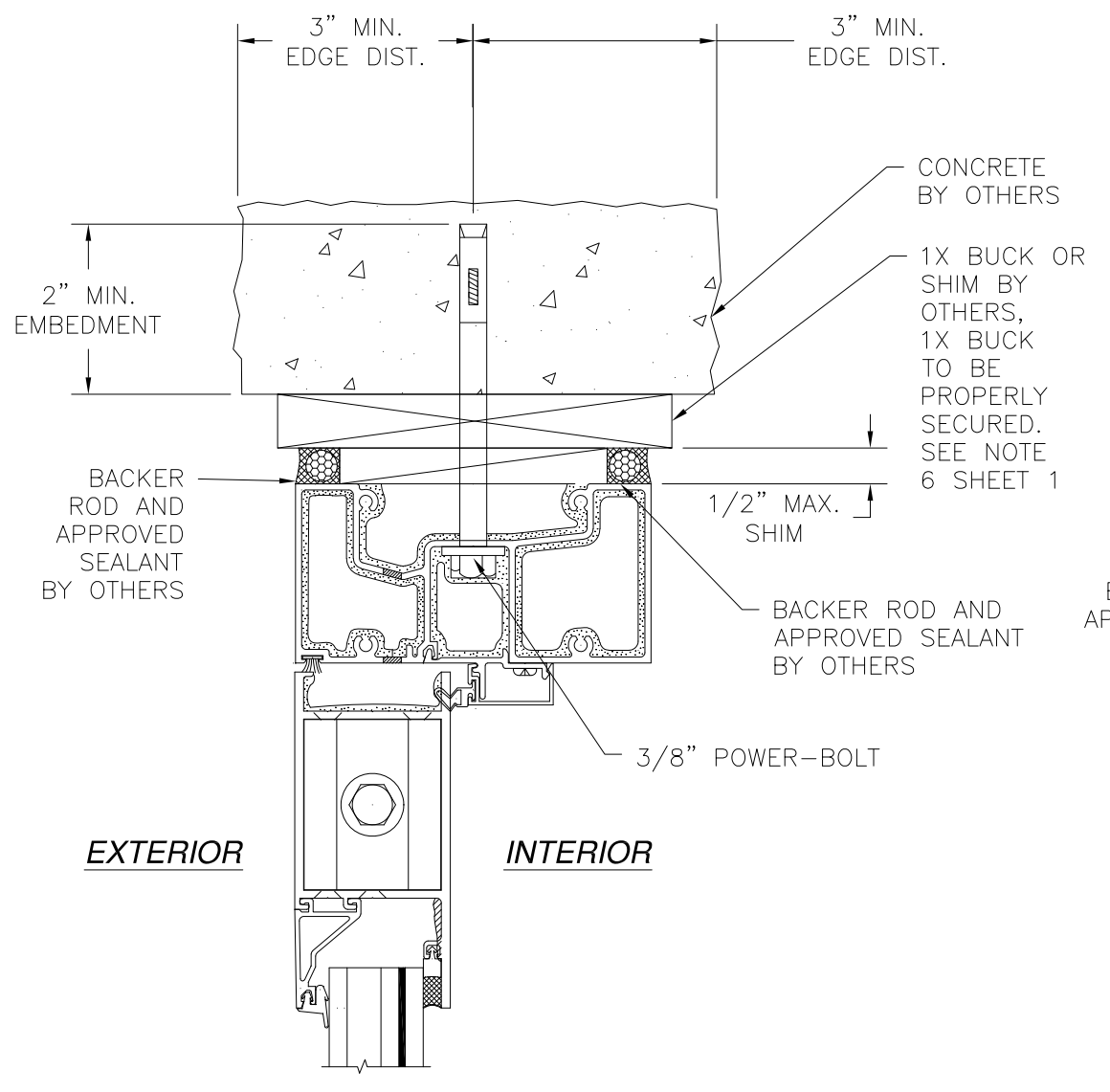


Luis R. Lomas P.E.
FL No.: 62514

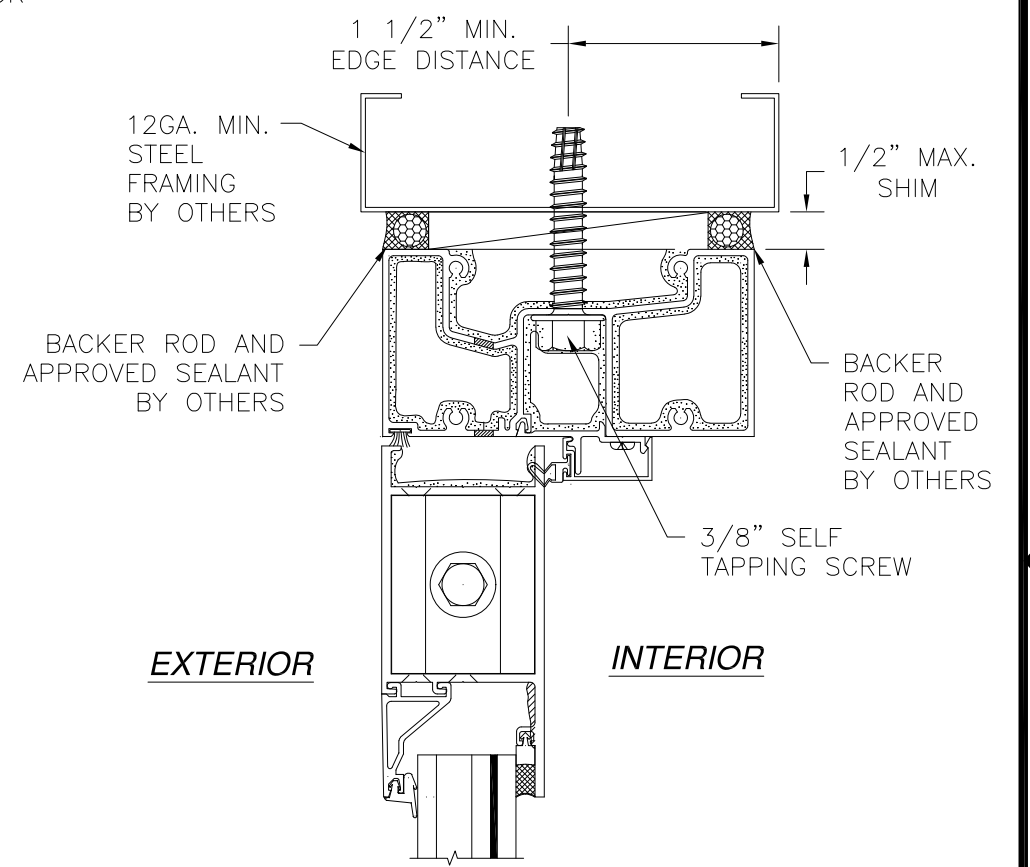
REVISIONS			
REV	DESCRIPTION	DATE	APPROVED
C	CHANGE MANUFACTURER'S NAME	03/23/2023	R.L.



E OPTIONAL DOOR HEADER
2X INSTALLATION



E OPTIONAL DOOR HEADER
CONCRETE INSTALLATION



E OPTIONAL DOOR HEADER
STEEL FRAMING INSTALLATION

NOTES:
 1. INTERIOR AND EXTERIOR FINISHES, BY OTHERS, NOT SHOWN FOR CLARITY.
 2. PERIMETER AND JOINT SEALANT BY OTHERS TO BE DESIGNED IN ACCORDANCE WITH ASTM E2112

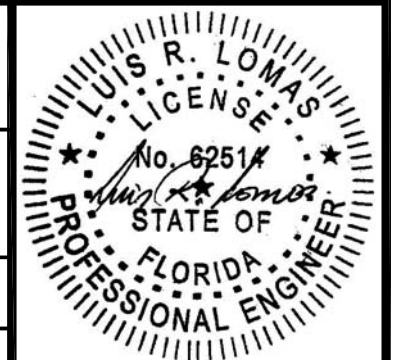
US ALUMINUM
 950 SOLON RD.
 WAXAHACHIE, TX 75165

SERIES BT601/IT600 STORM FRONT OS ALUMINUM
 STOREFRONT DOOR SYSTEM - LMI
 INSTALLATION DETAILS

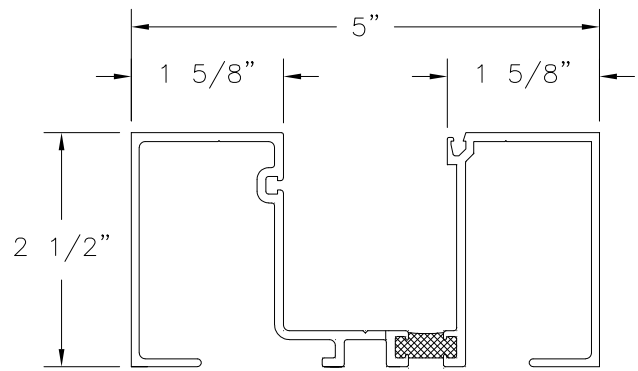
DRAWN: TJH	DWG NO. 08-01577	REV C
SCALE NTS	DATE 01/11/10	SHEET 11 OF 14

L. ROBERTO LOMAS P.E.
 400 S. PALM AVE, INDIALANTIC, FL 32903
 434-688-0609 rllomas@rlomaspe.com

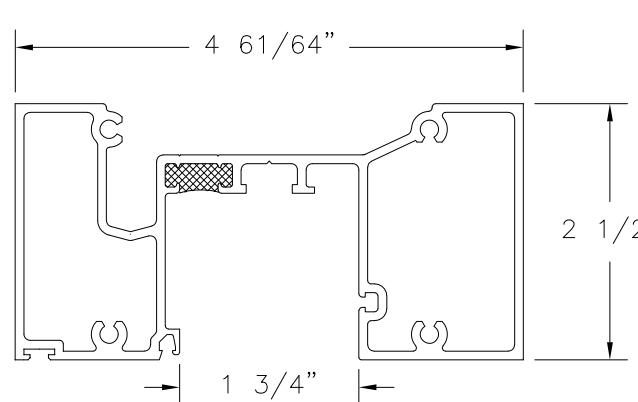
SIGNED: 03/23/2023



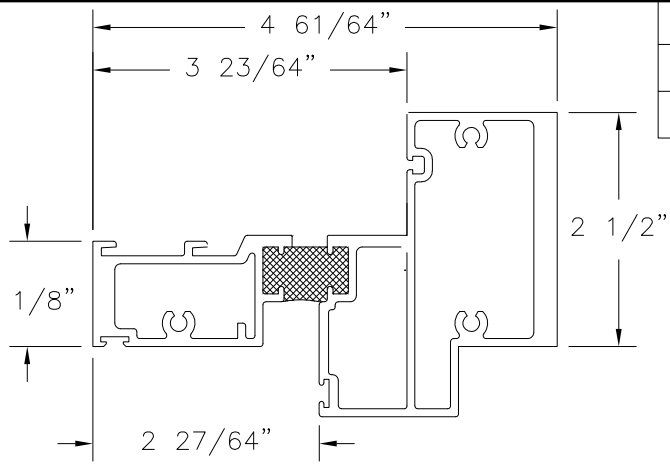
Luis R. Lomas P.E.
 FL No.: 62514



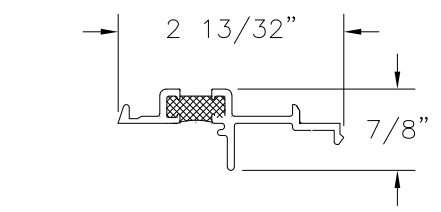
① **VERTICAL JAMB**
EXTRUDED ALUMINUM
6063-T5 .095" THICK



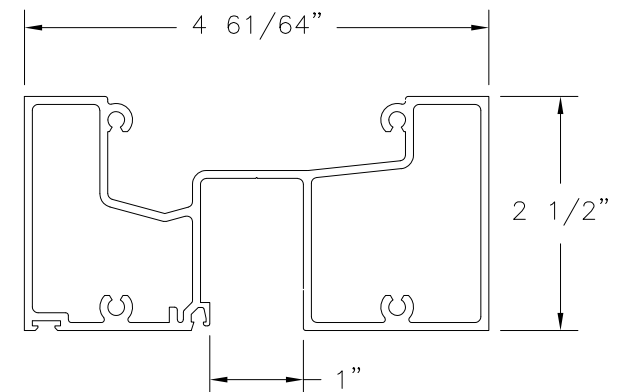
⑧ **DOOR HEADER**
EXTRUDED ALUMINUM 6063-T5 .085" THICK



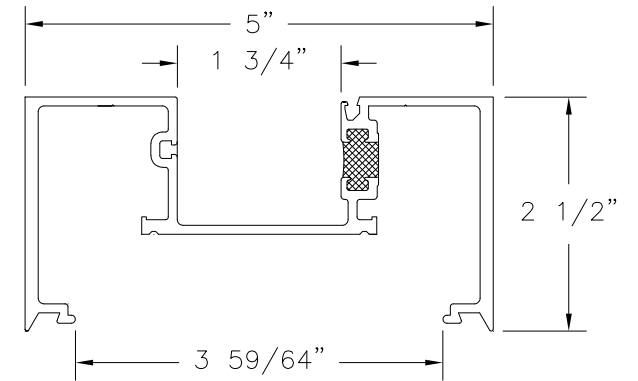
⑭ **HORIZONTAL HEADER**
EXTRUDED ALUMINUM 6063-T5 .085" THICK



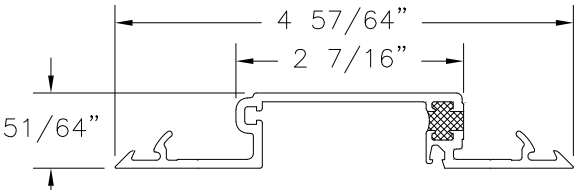
⑫ **DOOR STOP ADAPTER**
EXTRUDED ALUMINUM 6063-T5 .095" THICK



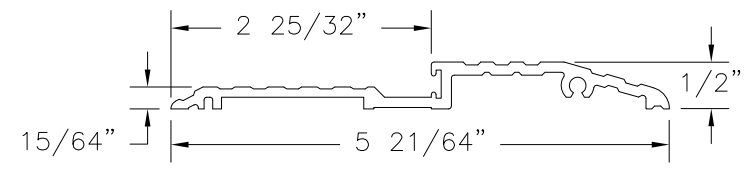
② **OPTIONAL DOOR HEADER**
EXTRUDED ALUMINUM 6063-T5 .085" THICK



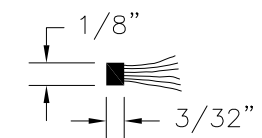
⑯ **VERTICAL MULLION**
EXTRUDED ALUMINUM 6063-T5 .095" THICK



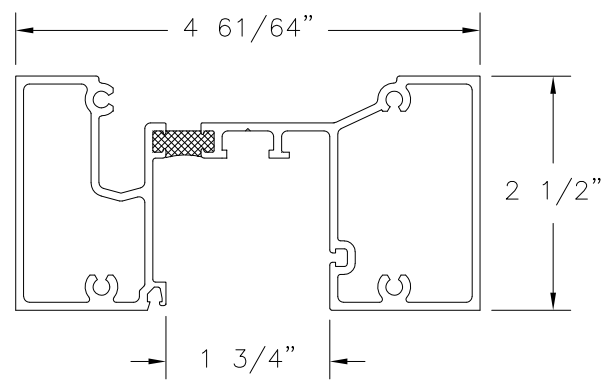
⑨ **VERTICAL MULLION FILLER**
EXTRUDED ALUMINUM 6063-T5 .095" THICK



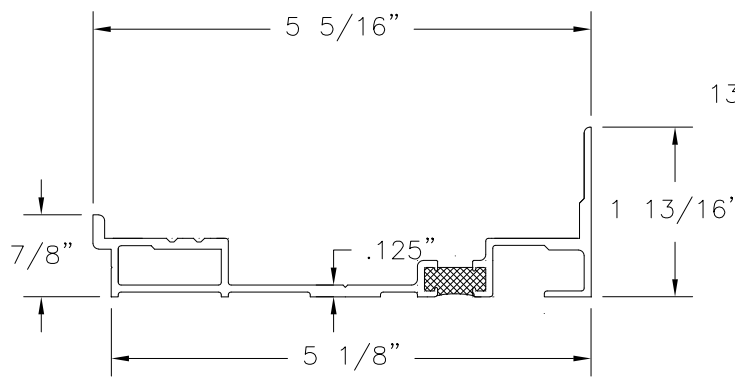
⑦ **AIR THRESHOLD**
EXTRUDED ALUMINUM 6063-T5 .109" THICK



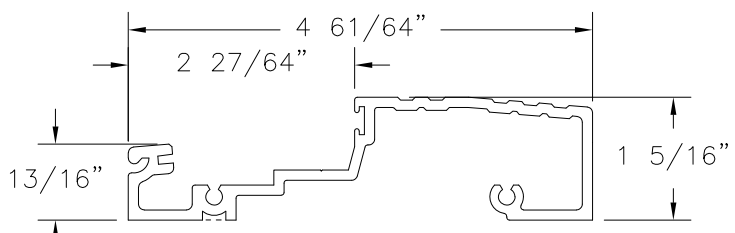
④① **DOOR WEATHERSTRIP**
POLY PILE



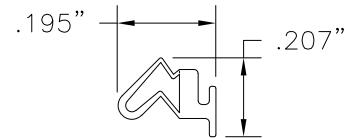
③ **HEAD MULLION**
EXTRUDED ALUMINUM 6063-T5 .085" THICK



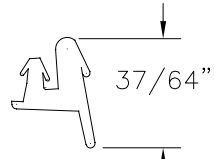
⑤ **SUB SILL**
EXTRUDED ALUMINUM 6063-T5 .075" THICK



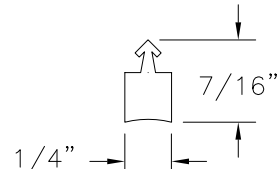
⑥ **WATER THRESHOLD**
EXTRUDED ALUMINUM 6063-T5 .109" THICK



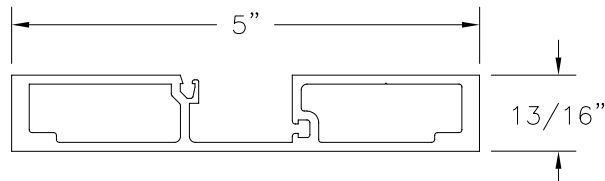
②① **DOOR WEATHERSTRIP**
VINYL



②① **TOP LOAD GASKET**
EDPM



②② **GLAZING SEAL**
SCR



⑥② **VERTICAL JAMB**
EXTRUDED ALUMINUM
6063-T5 .095" THICK

REVISIONS			
REV	DESCRIPTION	DATE	APPROVED
C	CHANGE MANUFACTURER'S NAME	03/23/2023	R.L.

US ALUMINUM
950 SOLON RD.
WAXAHACHIE, TX 75165

SERIES BT601/IT600 STORM FRONT OS ALUMINUM
STOREFRONT DOOR SYSTEM - LMI
COMPONENTS

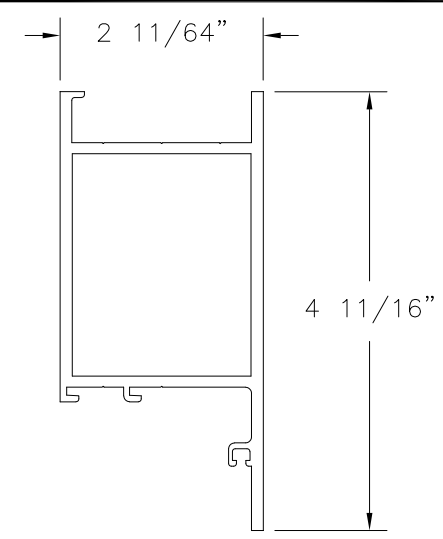
DRAWN: TJH	DWG NO. 08-01577	REV C
SCALE NTS	DATE 01/11/10	SHEET 12 OF 14

L. ROBERTO LOMAS P.E.
400 S. PALM AVE, INDIALANTIC, FL 32903
434-688-0609 rllomas@rlomaspe.com

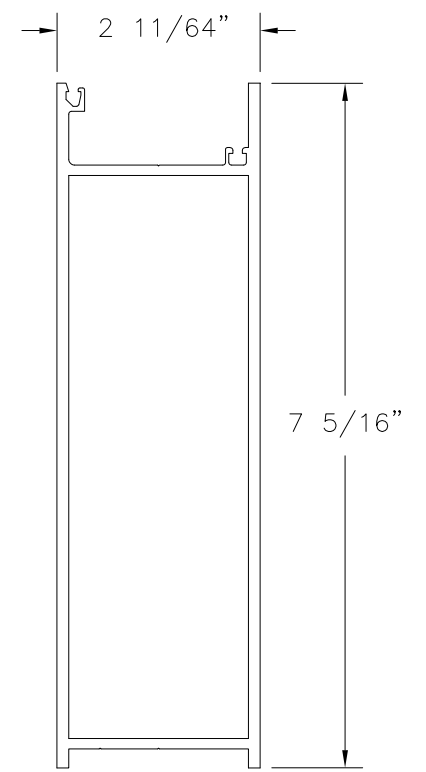
SIGNED: 03/23/2023

Luis R. Lomas P.E.
FL No.: 62514

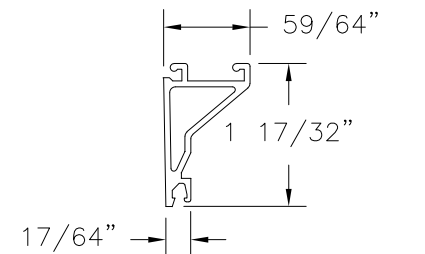
REVISIONS			
REV	DESCRIPTION	DATE	APPROVED
C	CHANGE MANUFACTURER'S NAME	03/23/2023	R.L.



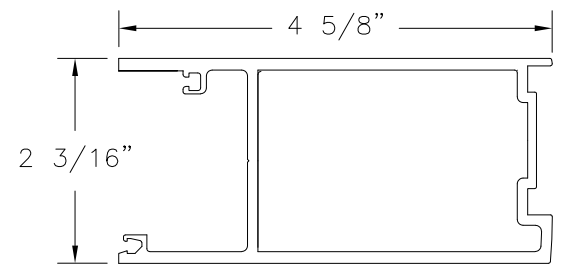
15 **DOOR TOP RAIL**
EXTRUDED ALUMINUM
6063-T5 .125" THICK



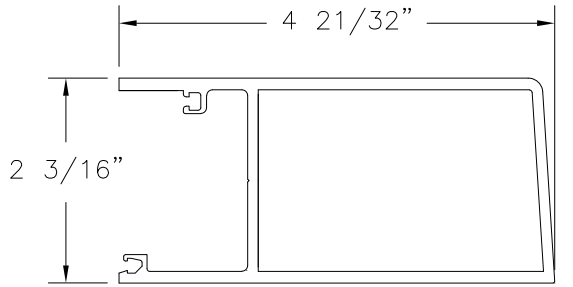
19 **BOTTOM RAIL**
EXTRUDED ALUMINUM
6063-T5 .125" THICK



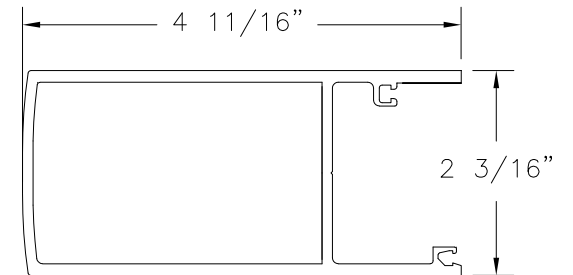
17 **DOOR GLAZING STOP**
EXTRUDED ALUMINUM
6063-T5 .062" THICK



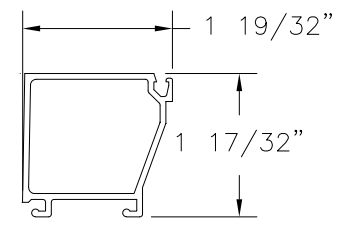
35 **INACTIVE STILE**
EXTRUDED ALUMINUM
6063-T5 .125" THICK



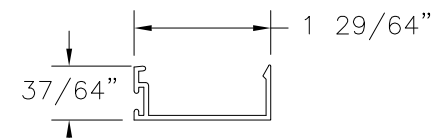
39 **HINGE STILE**
EXTRUDED ALUMINUM
6063-T5 .125" THICK



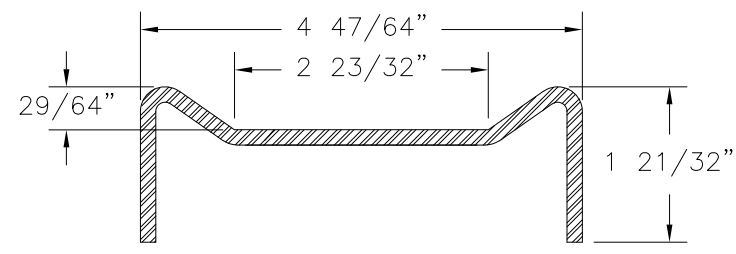
38 **ACTIVE STILE**
EXTRUDED ALUMINUM
6063-T5 .125" THICK



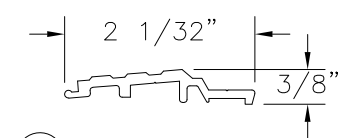
11 **GLASS STOP**
EXTRUDED ALUMINUM 6063-T5 .062" THICK



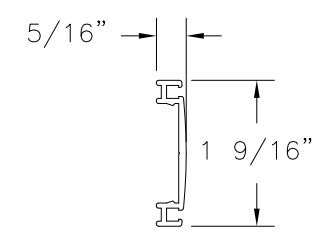
36 **DOOR STOP**
EXTRUDED ALUMINUM
6063-T5 .050" THICK



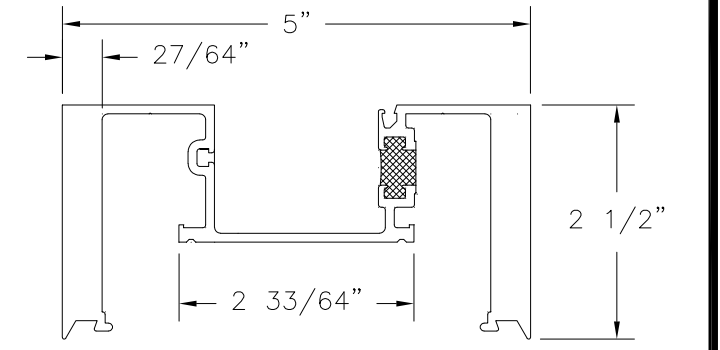
28 **STEEL STIFFENER HEAVY**
FORMED 8GA. A36 MILD STEEL



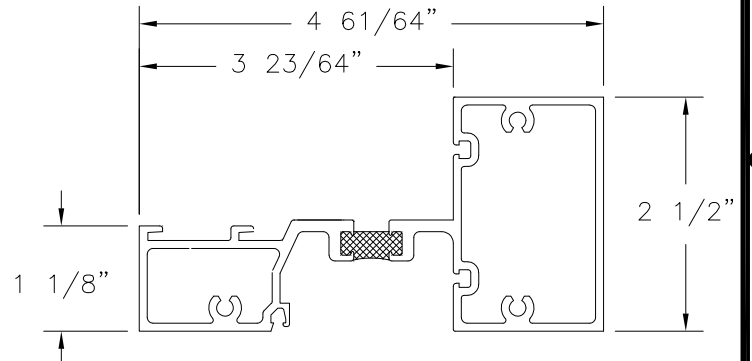
33 **HP WATER THRESHOLD INSERT**
EXTRUDED ALUMINUM
6063-T5 .090" THICK



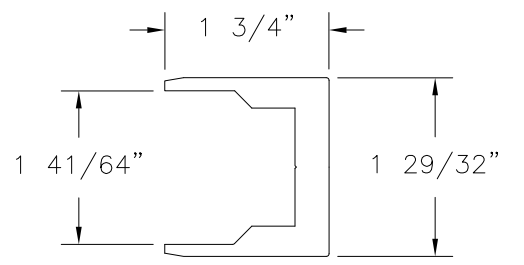
54 **ADJUSTABLE ASTRAGAL**
EXTRUDED ALUMINUM
6063-T5 .055" THICK



18 **HEAVY DUTY VERTICAL MULLION**
EXTRUDED ALUMINUM 6063-T5 .095" THICK



10 **HORIZONTAL MULL**
EXTRUDED ALUMINUM
6063-T5 .085" THICK



41 **SHEAR CHANNEL**
EXTRUDED ALUMINUM
6063-T5 .363" THICK

SIGNED: 03/23/2023

US ALUMINUM
950 SOLON RD.
WAXAHACHIE, TX 75165

SERIES BT601/IT600 STORM FRONT OS ALUMINUM
STOREFRONT DOOR SYSTEM - LMI
COMPONENTS

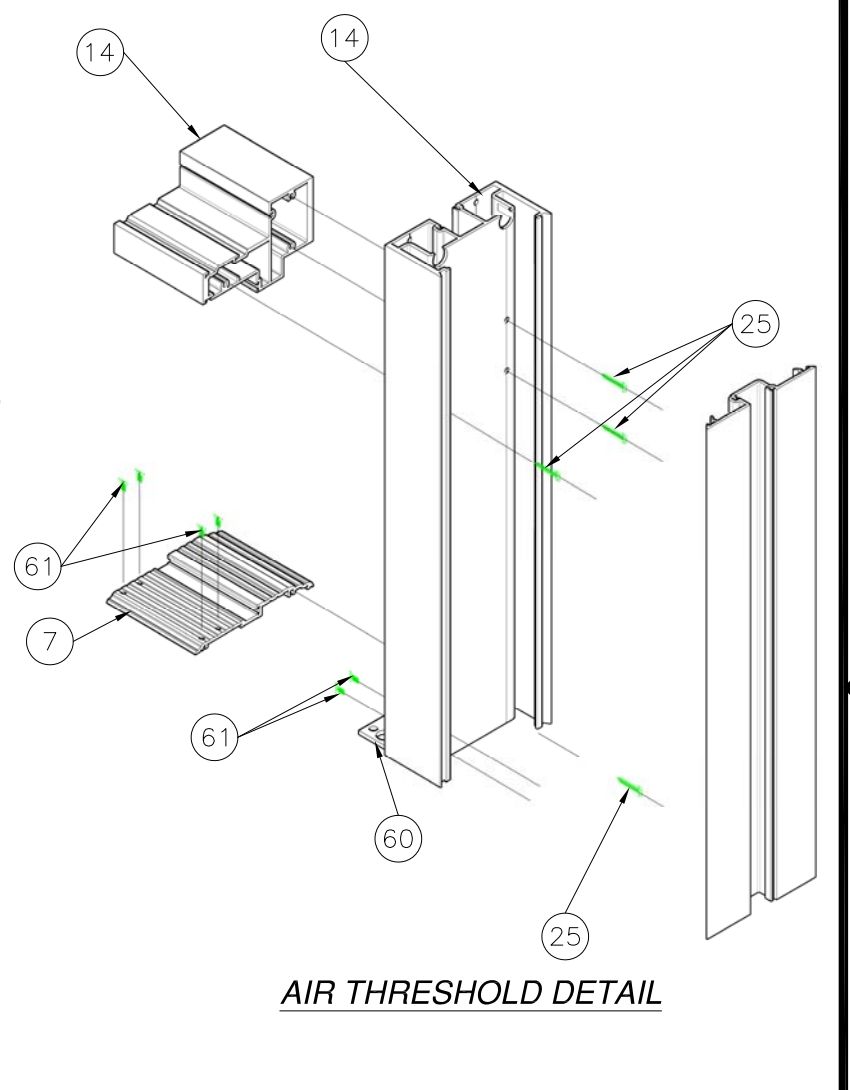
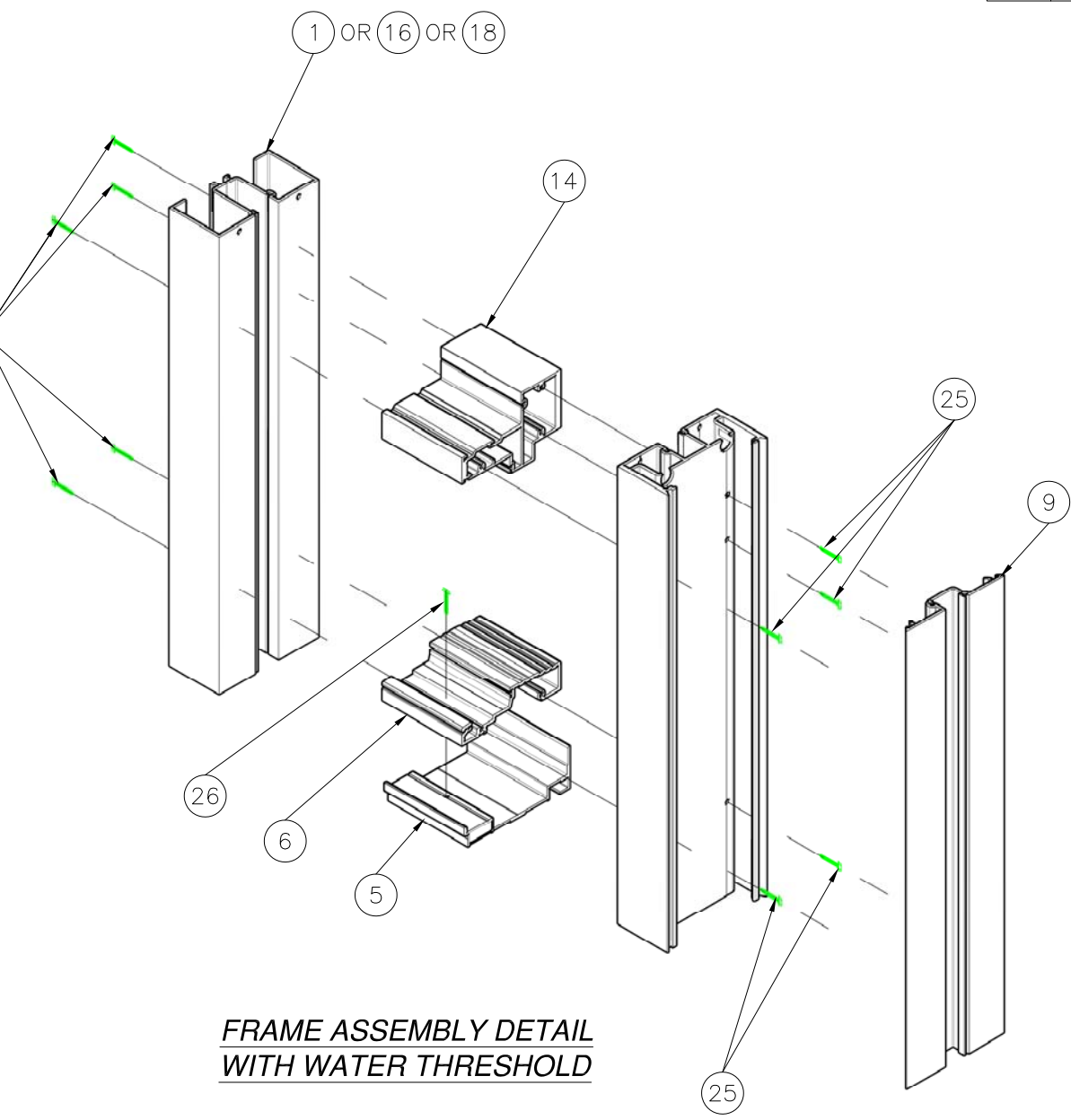
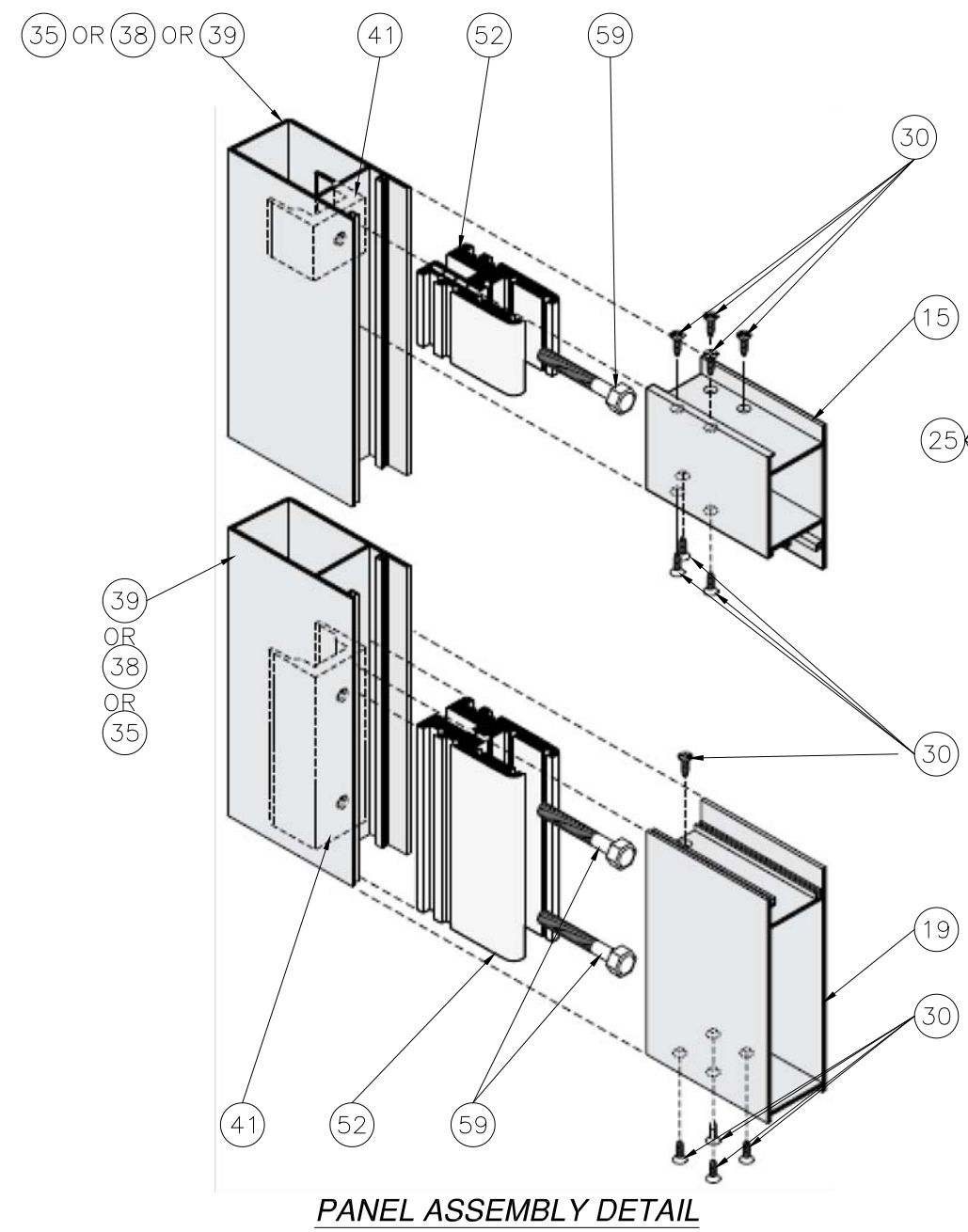
DRAWN: TJH	DWG NO. 08-01577	REV C
SCALE NTS	DATE 01/11/10	SHEET 13 OF 14

L. ROBERTO LOMAS P.E.
400 S. PALM AVE, INDIALANTIC, FL 32903
434-688-0609 rllomas@lrlomaspe.com



Luis R. Lomas P.E.
FL No.: 62514

REVISIONS			
REV	DESCRIPTION	DATE	APPROVED
C	CHANGE MANUFACTURER'S NAME	03/23/2023	R.L.



SIGNED: 03/23/2023

US ALUMINUM
 950 SOLON RD.
 WAXAHACHIE, TX 75165

SERIES BT601/IT600 STORM FRONT OS ALUMINUM
 STOREFRONT DOOR SYSTEM – LMI
 PANEL AND FRAME ASSEMBLY DETAILS

DRAWN: TJH	DWG NO. 08-01577	REV C
SCALE NTS	DATE 01/11/10	SHEET 14 OF 14

L. ROBERTO LOMAS P.E.
 400 S. PALM AVE, INDIALANTIC, FL 32903
 434-688-0609 rllomas@rlomaspe.com

Luis R. Lomas P.E.
 FL No.: 62514