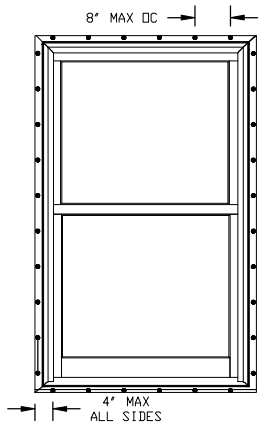
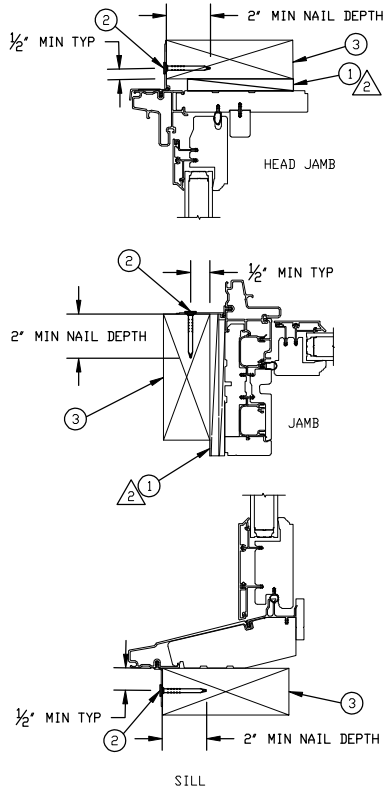
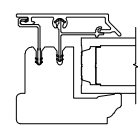


NAILING FIN INSTALLATION



UNIT	MAX FRAME SIZE	DP RATING
UL DBLHNG G2	45 1/4 X 87 1/2	+50/-50



\*GLASS COMPLIES WITH ASTM 1300\*  
GLAZING DETAIL


- NAILING FIN INSTALLATION METHOD:
- UNIT MUST NOT BE IN DIRECT CONTACT WITH EITHER CONCRETE OR TREATED BUCK MATERIAL. IF SHIM SPACE IS LESS THAN 1/8" WRAPPING THE UNIT ON ALL 4 SIDES WITH WINDOW FLASHING TAPE IS REQUIRED AS A BARRIER BETWEEN THE UNIT AND CONCRETE OR TREATED LUMBER.
  - #8 X 1 1/4" PAN HEAD OR WAFER HEAD SCREWS MAY BE SUBSTITUTED FOR 2" ROOFING NAILS.

- NOTES:
1. THIS PRINT IS FOR STRUCTURAL PERFORMANCE ONLY. FOR FLASHING & SEALING REQUIREMENTS, REFER TO THE INSTALLATION INSTRUCTIONS.
  2. SHIMS:
    - A SHIM MUST BE PLACED AT THE CHECK RAILS AND 4-6" FROM EACH CORNER.
    - ALL OTHERS MUST BE PLACED A MAX OF 15 INCHES APART.
  3. IF CHEMICALLY TREATED LUMBER IS USED FOR BUCK MATERIAL, FASTENERS INTO THE BUCK MUST BE A MINIMUM OF 0.90 OZ/FT<sup>2</sup> ZINC HOT DIPPED GALVANIZED OR STAINLESS STEEL TYPE 304 OR 316.

**CATEGORY:**  
DOUBLE HUNG  
**UNIT TYPE:**  
UDHG2

ITEM NO	REF NO	DESCRIPTION
3	-----	2X WOOD BUCK BY OTHERS
2	-----	2" ROOFING NAIL
1	-----	SHIM

UNSPECIFIED TOLERANCES	
DECIMALS: XX ± .03 XXX ± .012	ANGLE DEG: ± .5
LINEAL: + .125 - .000	FAB LINEAL: ± NA
MATERIAL: NA	

<b>MARVIN</b> 		<b>RESEARCH &amp; DEVELOPMENT</b>	
<b>COLLECTION:</b> ULTIMATE			
<b>DWG TYPE:</b> INSTALLATION		<b>DESCRIPTION:</b> INSTALLATION	
<b>CHK:</b>	<b>SIZE:</b> B	<b>CLASS:</b> MISC	<b>DWG NO:</b> 00126961
<b>APP:</b>	<b>SCALE:</b> NA	<b>DATE:</b> 01/27/11	<b>DWG BY:</b> KOMPELIEN, SARA
			<b>SHEET:</b> 1 OF 1

**NOTICE - CONFIDENTIAL INFORMATION**

The information in this document is privileged and strictly confidential. The information contained herein shall be used only by Marvin Windows and Doors employees and by those agents or suppliers granted official written permission. If the reader of this document is not the intended recipient, or the employee or agent of the intended recipient, please delete this document from all data storage devices, and destroy all hard copies. Any unauthorized dissemination, distribution, copying or other use of the information contained in this document is strictly prohibited.