

GENERAL NOTES:

- THIS PRODUCT HAS BEEN TESTED, ANALYZED & APPROVED FOR DESIGN PRESSURES NOT TO EXCEED THOSE SHOWN IN THE "ALLOWABLE DESIGN PRESSURE TABLE(S)".
- OPENINGS, BUCKING & BUCKING FASTENERS MUST BE PROPERLY DESIGNED & INSTALLED TO TRANSFER WIND LOADS TO THE STRUCTURE.
- ALL HARDWARE & FASTENERS SHALL BE IN ACCORDANCE WITH THESE DRAWINGS & SHALL NOT VARY UNLESS SPECIFICALLY MENTIONED ON THE DRAWINGS. SPECIFIED ANCHOR EMBED TO BASE MATERIAL SHALL BE BEYOND WALL FINISH OR STUCCO.
- THIS PRODUCT HAS BEEN DESIGNED IN ACCORDANCE WITH AND MEETS THE REQUIREMENTS OF THE FLORIDA BUILDING CODE (FBC) FOR NON-HIGH VELOCITY HURRICANE ZONES (NON-HVHZ).
- THIS PRODUCT IS NON-IMPACT RATED & MUST BE SHUTTERED WITH A FLORIDA CODE APPROVED SHUTTER WHERE REQUIRED BY CODE.
- ALL ANCHORS SECURING PRODUCT FRAMES TO PRESSURE TREATED BUCKS OR WOOD FRAMING SHALL BE CAPABLE OF RESISTING CORROSION CAUSED BY THE PRESSURE TREATING CHEMICALS IN THE WOOD.
- DETERMINE THE POSITIVE & NEGATIVE DESIGN LOADS TO USE WHEN REFERENCEING THESE DOCUMENTS IN ACCORDANCE WITH THE GOVERNING CODE AND GOVERNING WIND VELOCITY. FOR WIND LOAD CALCULATIONS IN ACCORDANCE WITH THE FLORIDA BUILDING CODE, A DIRECTIONALITY FACTOR OF Kd = 0.85 MAY BE APPLIED PER THE ASCE-7 STANDARD.
- MATERIALS, INCLUDING BUT NOT LIMITED TO STEEL SOREWS, THAT COME INTO CONTACT WITH OTHER DISSIMILAR MATERIALS SHALL MEET THE REQUIREMENTS OF FLORIDA BUILDING CODE.
- TO THE BEST OF OUR KNOWLEDGE, THE PRODUCT SHOWN HEREIN IS QUALITY ASSURED BY A FLORIDA STATE APPROVED CERTIFICATION/QA ENTITY & SHALL BE LABELED IN ACCORDANCE WITH THE FBC AND THE FLORIDA DEPARTMENT OF BUSINESS & PROFESSIONAL REGULATION SPECIFICATIONS. THESE DRAWINGS SHOW ALL APPLICABLE ELEVATION, COMBINATION, INSTALLATION & COMPARATIVE ANALYSIS CONDITIONS AS DETERMINED THROUGH TESTING & ENGINEERING RATIONAL ANALYSIS. PRODUCT ASSEMBLY SHALL BE IN ACCORDANCE WITH THESE DRAWINGS, THE MANUFACTURER'S QUALITY ASSURANCE SPECIFICATIONS & TESTING REPORTS.
- CERTIFICATION OF THIS PRODUCT SHALL BE CONSIDERED VOID IF IT IS INSTALLED WITHOUT A BUILDING PERMIT FROM THE APPLICABLE LOCAL BUILDING DEPARTMENT OR IF IT IS INSTALLED BY ANYONE OTHER THAN A LICENSED CONTRACTOR EXPERIENCED WITH INSTALLATIONS OF THIS TYPE OF PRODUCT.
- ALL WOOD MEMBERS OF THIS PRODUCT THAT MAY POSSIBLY COME INTO CONTACT WITH MASONRY OR CONCRETE SUBSTRATES, ARE SUBJECT TO MOISTURE &/OR ARE SUBJECT TO THE OUTSIDE ENVIRONMENT SHALL BE OF AN APPROVED DURABLE SPECIES OR BE TREATED IN AN APPROVED METHOD WITH AN APPROVED PRESERVATIVE PER FBC REQUIREMENTS.
- CONDITIONS OTHER THAN THOSE SHOWN HERE-IN SHALL BE SUBJECT TO JOB SPECIFIC ENGINEER'S REVIEW AND CERTIFICATION (EXAMPLE: SMALLER DOORS TO HIGHER ALLOWABLE DESIGN PRESSURE THAN WHAT IS STATED).

NOTE: THESE DOOR UNITS ARE NOT APPROVED FOR USE WHERE WATER INFILTRATION RESISTANCE IS REQUIRED BY THE DOOR UNLESS THE UNITS ARE INSTALLED IN NON-HABITABLE AREAS WHERE THE UNIT & THE AREA ARE DESIGNED TO ACCEPT WATER INFILTRATION OR THE UNITS ARE INSTALLED AT LOCATIONS PROTECTED BY A CANOPY OR OVERHANG WHERE-BY THE OVERHANG(OH) RATIO IS EQUAL TO OR MORE THAN 1.0 PER FBC.

FRAME ANCHOR REQUIREMENTS TABLE

FRAME SCREWS

OPENING TYPE (SUBSTRATE)	FRAME TO OPENING FASTENER TYPE	MINIMUM EMBED	MINIMUM EDGE DIST.
MIN. 2X4 WOOD FRAME OR BUCK (MIN. GR. 3 & G=0.55)	NO. 10 SMS OR WOOD SCREW	1 1/4"	3/4"
MIN. 18 GA. 33 KSI METAL STUD	NO. 10 GR. 5 SELF TAP/DRILL SCREW	FULL	1/2"
MIN. 1/8" THK A36 STEEL	NO. 10 GR. 5 SELF TAP/DRILL SCREW	FULL	1/2"
MIN. 1/8" THK 6063-T5 ALUM.	NO. 10 GR. 5 SELF TAP/DRILL SCREW	FULL	1/2"
MIN. C-90 CMU	(1) 1/4" CONCRETE SCREW	1 1/4"	2"
2500 PSI CONCRETE	(1) 1/4" CONCRETE SCREW	1 1/2"	2"

HINGE & STRIKE SCREWS

MIN. 2X4 WOOD FRAME OR BUCK (MIN. GR. 3 & G=0.55)	NO. 10 SMS OR WOOD SCREW	1 1/4"	3/4"
MIN. 18 GA. 33 KSI METAL STUD	NO. 10 GR. 5 SELF TAP/DRILL SCREW	FULL	1/2"
MIN. 1/8" THK A36 STEEL	NO. 10 GR. 5 SELF TAP/DRILL SCREW	FULL	1/2"
MIN. 1/8" THK 6063-T5 ALUM.	NO. 10 GR. 5 SELF TAP/DRILL SCREW	FULL	1/2"
MIN. C-90 CMU	(1) 3/16" CONCRETE SCREW	1 1/4"	2"
2500 PSI CONCRETE	(1) 3/16" CONCRETE SCREW	1 1/2"	2"

(1) CONCRETE SCREWS SHALL BE ELCO ULTRACONS (C.S. OR S.S.), ELCO CRETE-FLEX (S.S.), ITW RAMSET/RED HEAD TAPCONS (C.S. OR S.S.) OR HILTI KWIK-CON II (C.S OR S.S.).

LOCK SYSTEM DESCRIPTIONS

LOCK SYSTEM	DESCRIPTION	ACTIVE PANEL	INACTIVE PANEL
1	LATCH & DEAD BOLT ONLY	TOP & BOTTOM SHOOT BOLTS	
2	LATCH & DEAD BOLT PLUS SURFACE BOLTS	TOP & BOTTOM SHOOT BOLTS	
3	3-POINT MULTI-POINT LOCK	TOP & BOTTOM SHOOT BOLTS	
4	5-POINT MULTI-POINT LOCK (1)	TOP & BOTTOM SHOOT BOLTS	
5	LATCH & TRU-LOCK MULTI-POINT PLUS SURFACE BOLTS (1)	TOP & BOTTOM SHOOT BOLTS	

(1) SURFACE BOLTS IN LOCK SYSTEM 5 ARE NOT REQUIRED WITH SINGLE PANEL DOORS.

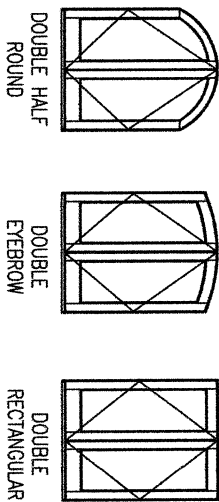
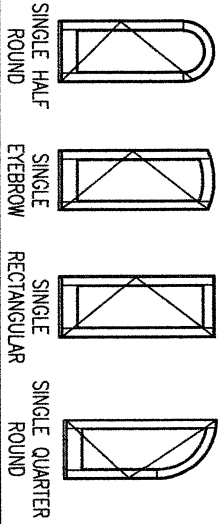
EVALUATION OF THIS PRODUCT IS BASED ON APPLICABLE STANDARDS AND/OR INFORMATION & RESULTS FROM APPLICABLE TEST REPORTS. THE FLORIDA BUILDING CODE VERSION CONSIDERED WITH THIS EVALUATION WAS THAT IN FORCE AT THE TIME OF THE EVALUATION. IN THE EVENT OF CODE VERSION CHANGES/UPDATES OR IN THE EVENT THAT NEW OR ADDITIONAL TESTING IS COMPLETED ON THIS PRODUCT, PRIOR TO STATING CODE COMPLIANCE WITH THE STATE, THE MANUFACTURER SHALL CONFIRM WITH THE EVALUATION ENGINEER OF RECORD THAT EVERYTHING SPECIFIED HERE-IN IS CURRENT WITH ALL CURRENT TESTING, CODES AND APPLICABLE STANDARDS.

HINGE REQUIREMENTS

DOOR HEIGHT	# HINGES REQ'D
6'-8"	3
TALLER THAN 6'-8"	(1) 4

(1) 3 HINGES REQUIRED WITH ALL HEIGHTS OF DOUBLE HALF ROUND, SINGLE HALF-ROUND & SINGLE QUARTER ROUND DOORS

SHAPES CONSIDERED AS PART OF THIS APPROVAL



NOTE: EYEBROW TOP DOORS SHALL BE INSTALLED THE SAME AS RECTANGULAR.

DOOR CORNER CONSTRUCTION:

HEAD FRAME CORNERS: OPTION 1: SIDE JAMB MEMBER IS COPEd. HEAD FRAME MEMBER IS SQUARE CUT, BUTTED TO THE SIDE JAMB MEMBER, FULLY BONDED/SEALED WITH DOW 995 OR BOSS/QUANEX GS1 SEALANT AND JOINED WITH THREE(3) 1/2" x 2" LONG 16 GAGE CROWN STAPLES. OPTION 2: JAMBS END IS COPEd, BUTTED TO THE HEAD, FULLY BONDED/SEALED WITH DOW 995 OR BOSS/QUANEX GS1 SEALANT AND JOINED WITH 3 NO. 10 x 3" SOREWS.

SILL CORNERS (STANDARD BUMPER SILL): OPTION 1: SIDE JAMB MEMBER IS COPEd. SILL MEMBER IS SQUARE CUT, BUTTED TO THE SIDE JAMB MEMBER, FULLY BONDED/SEALED WITH DOW 995 OR BOSS/QUANEX GS1 SEALANT AND JOINED WITH TWO(2) NO. 10 x 2" LONG WOOD OR SMS SOREWS. OPTION 2: JAMB END IS COPEd, BUTTED TO THE SILL, FULLY BONDED/SEALED WITH DOW 995 OR BOSS/QUANEX GS1 SEALANT AND JOINED WITH 3 NO. 10 x 3" SOREWS.

SILL CORNERS (ADJUSTABLE SILL): SIDE JAMB MEMBER IS COPEd. SILL MEMBER IS SQUARE CUT, BUTTED TO THE SIDE JAMB MEMBER, FULLY BONDED/SEALED WITH DOW 995 OR BOSS/QUANEX GS1 SEALANT AND JOINED WITH THREE(3) 1/2" x 2" LONG 16 GAGE CROWN STAPLES.

SILL CORNERS (ADA SILL): JAMB IS CUT TO FIT, BUTTED TO SILL, FULLY BONDED/SEALED WITH DOW 995 OR BOSS/QUANEX GS1 SEALANT AND JOINED WITH 3 NO. 10 x 2" SOREWS.

MULLION JAMBS TO CONTINUOUS HEAD AND SILL: EACH JAMB END IS COPEd, BUTTED TO THE HEAD/SILL, FULLY BONDED/SEALED WITH DOW 995 OR BOSS/QUANEX GS1 SEALANT AND JOINED WITH 3 NO. 10 x 3" SOREWS.

SEAL AT FULL RADIUS JAMB: SIDE AND HEAD FRAME MEMBERS ARE EQUALLY COPEd & LAPPEd 5", MATED TOGETHER, FULLY GLUED WITH KORLOCK GT-42-300A OR WATERPROOF'S TITEBOND III GLUE AND JOINED WITH 8 NO. 6 x 1 1/8" AND 8 NO. 6 x 5/8" SMS SOREWS.

TOP RAIL TO SILL: RAIL IS SQUARE CUT, BUTTED TO THE SILL, JOINED TO THE SILL WITH TWO(2) 5/8" x 3" DOWELS AND FULLY GLUED WITH KORLOCK GT-42-300A OR WATERPROOF'S TITEBOND III GLUE (DOWELS AND MEETING SURFACES).

STANDARD BOTTOM RAIL TO SILL: RAIL IS SQUARE CUT, BUTTED TO THE SILL, JOINED TO THE SILL WITH THREE(3) 5/8" x 3" DOWELS AND FULLY GLUED WITH KORLOCK GT-42-300A OR WATERPROOF'S TITEBOND III GLUE (DOWELS AND MEETING SURFACES).

GROOVED TO ACCEPT A 1/2" THICK x 3 3/8" WIDE x 7 7/16" LONG HARDWOOD KEY. ONCE JOINED VIA THE KEY, ALL SURFACES ARE GLUED WITH KORLOCK GT-42-300A OR WATERPROOF'S TITEBOND III GLUE.

MID-RAIL TO SILL: RAIL IS SQUARE CUT, BUTTED TO THE SILL, JOINED TO THE SILL WITH TWO(2) 5/8" x 3" DOWELS AND FULLY GLUED WITH KORLOCK GT-42-300A OR WATERPROOF'S TITEBOND III GLUE (DOWELS AND MEETING SURFACES).

MID-STILE TO RAIL: SILL IS SQUARE CUT, BUTTED TO THE RAIL, JOINED TO THE RAIL WITH TWO(2) 5/8" x 3" DOWELS AND FULLY GLUED WITH KORLOCK GT-42-300A OR WATERPROOF'S TITEBOND III GLUE (DOWELS AND MEETING SURFACES).

FULL RADIUS SILL/RAIL JOINERY AT RADIUS END: RAIL & SILL ARE VERTICALLY CUT, BUTTED TOGETHER, JOINED WITH TWO(2) 5/8" x 3" DOWELS AND FULLY GLUED WITH KORLOCK GT-42-300A OR WATERPROOF'S TITEBOND III GLUE (DOWELS AND MEETING SURFACES).

TRANSOM CORNER CONSTRUCTION:

DIRECT SET AND SASH SET TRANSOM FRAMES: SAME AS DOOR "HEAD FRAME CORNERS" STATED ABOVE.

SASH SET SASH CORNERS: RAILS ARE SQUARE CUT, BUTTED TO THE STILES, JOINED TO THE SILL WITH ONE(1) 5/8" x 3" DOWEL AND FULLY GLUED WITH KORLOCK GT-42-300A OR WATERPROOF'S TITEBOND III GLUE (DOWEL AND MEETING SURFACES).

NO.	REVISION DESCRIPTION	BY	DATE
A1	TYP0 CORRECTION	W.W.S.	08/04/17
B1	ADDED THRESHOLD OPTIONS	W.W.S.	08/05/20
B2	ADDED WEATHERSEAL OPTION	W.W.S.	08/05/20
C1	UPDATE PER NEW TESTING	W.W.S.	11/27/23

SIGNATURE DOOR INC.
401 PRIORITY STREET
ALTOONA, PA 16602
814-949-2770

DRAWING TITLE
8 FT. NON-IMPACT IN-SWING WOOD DOORS

CONSULTANTS
W. W. SCHAEFER ENGINEERING & CONSULTING, P.A.
26376 NADIR ROAD; UNIT 309
PUNTA GORDA, FL 33983
PHONE: 561-744-3424

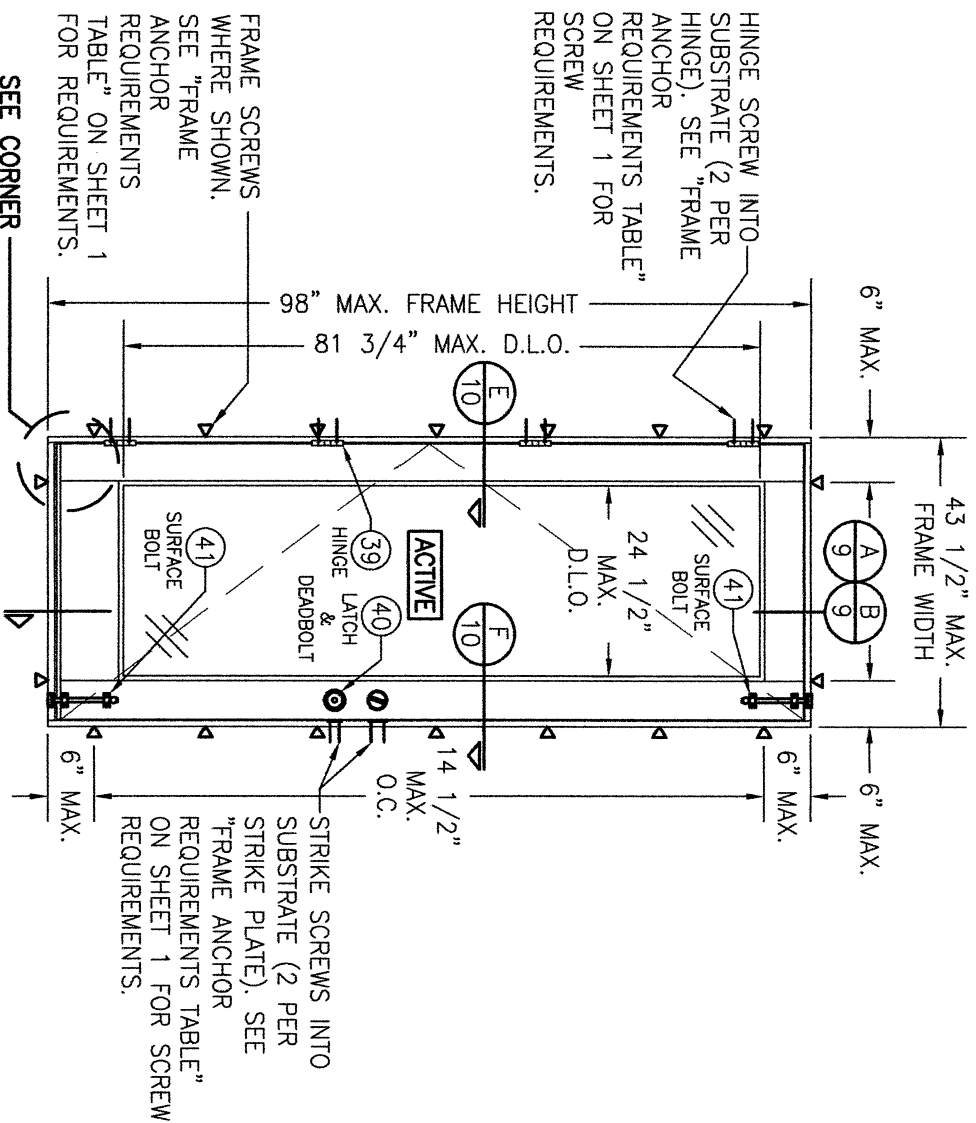
MANUFACTURER

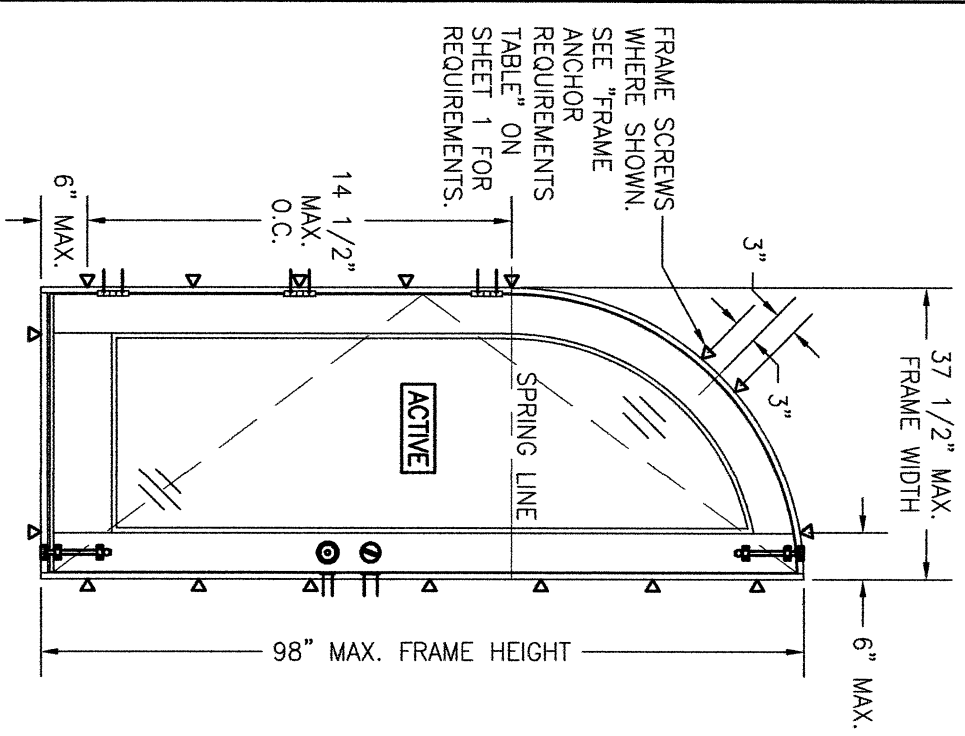
CERTIFICATION

WARREN W. SCHAEFER, P.E.
P.E. NO. 44135

THESE DRAWINGS ARE APPLICABLE ONLY TO THE PRODUCT SPECIFIED. THEY MAY NOT BE USED FOR THE ASSEMBLY AND/OR INSTALLATION OF ANY OTHER PRODUCT NOR MAY THEY BE USED FOR RATIONAL AND/OR LOCAL APPROVAL OF ANY PRODUCT NOT PRODUCED BY THE MANUFACTURER STATED ON THESE DRAWINGS.

DRAWING NO. 1898
SHEET NO. 1 OF 18





INTERIOR ELEVATION:
SINGLE QUARTER-ROUND TOP DOOR

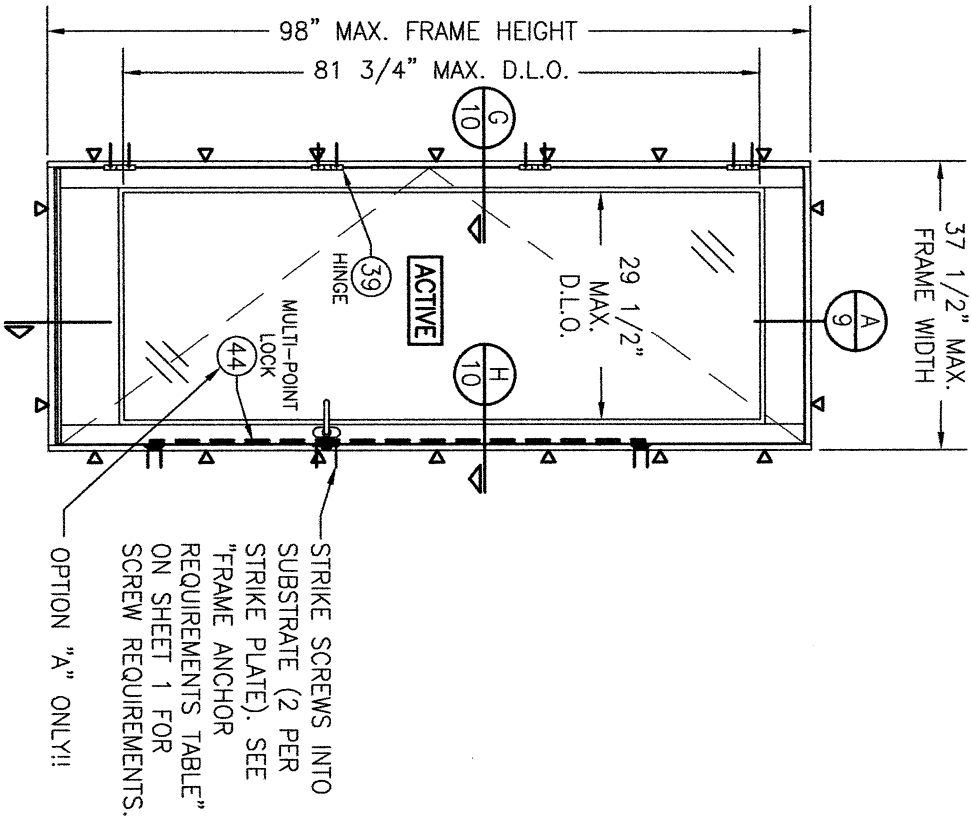
SCALE: 1/2" = 1'-0"

(FOR DETAIL NOT SHOWN, SEE ELEVATIONS ON SHEET 3. NOTE THAT ALL LOCK SYSTEMS APPLY.)

ALLOWABLE DESIGN PRESSURE
(SINGLE QUARTER-ROUND DOORS)

LOCK SYSTEM	ALLOWABLE PRESSURE (PSF)			
	(1) GLAZED	OPAQUE		
	POS.	NEG.	POS.	NEG.
1	30	50	30	50
2	45	50	50	50
3	35	40	35	40
4	50	55	50	65

(1) "GLAZED" INCLUDES FULLY AND PARTIALLY GLAZED DOOR PANELS.



INTERIOR ELEVATION:
SINGLE RECTANGULAR ACTIVE SIDELITE

SCALE: 1/2" = 1'-0"

(FOR INSTALLATION DETAIL NOT SHOWN, SEE ELEVATION ON SHEET 3.)

(ONLY RECTANGULAR SHAPE APPLIES TO THIS SIDELITE)

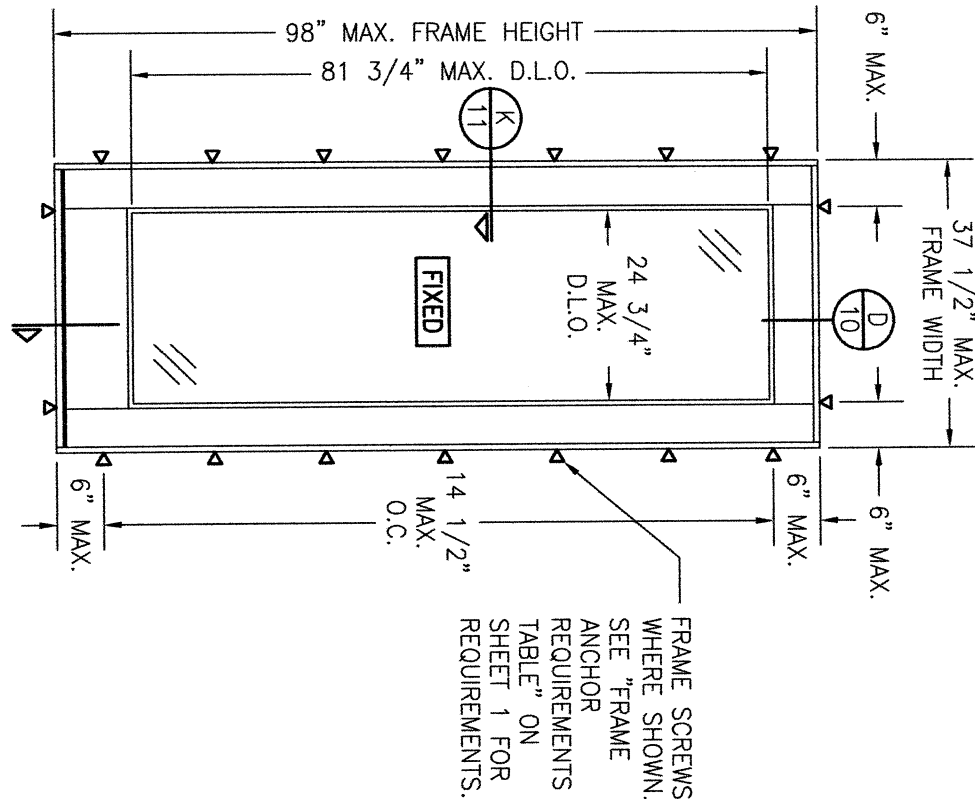
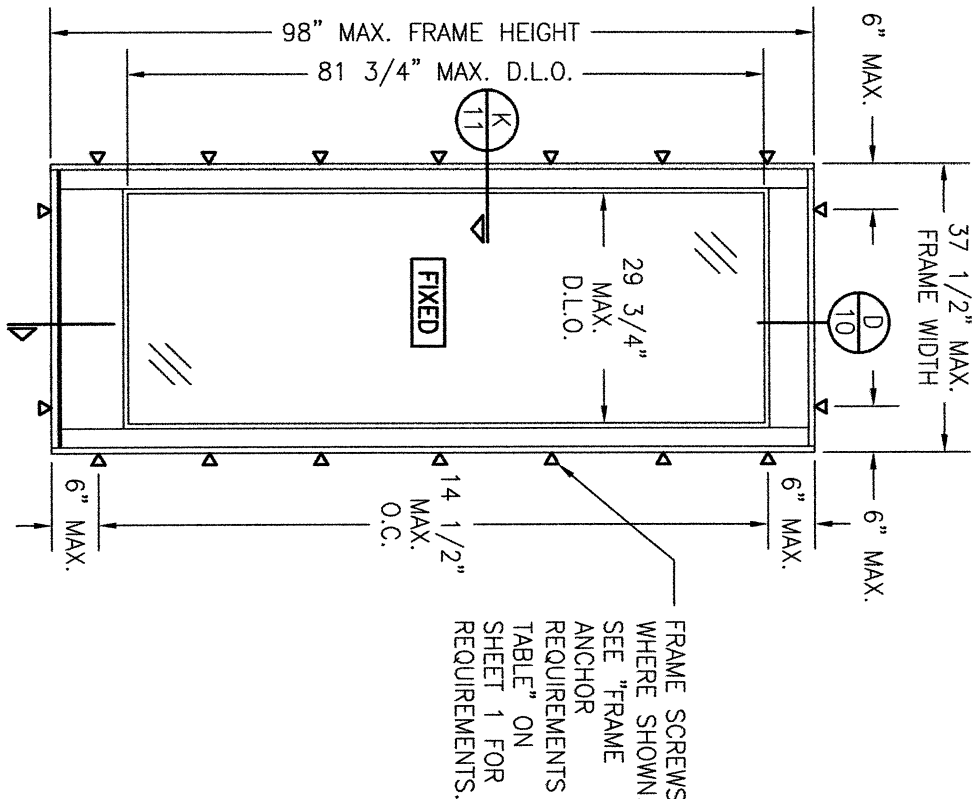
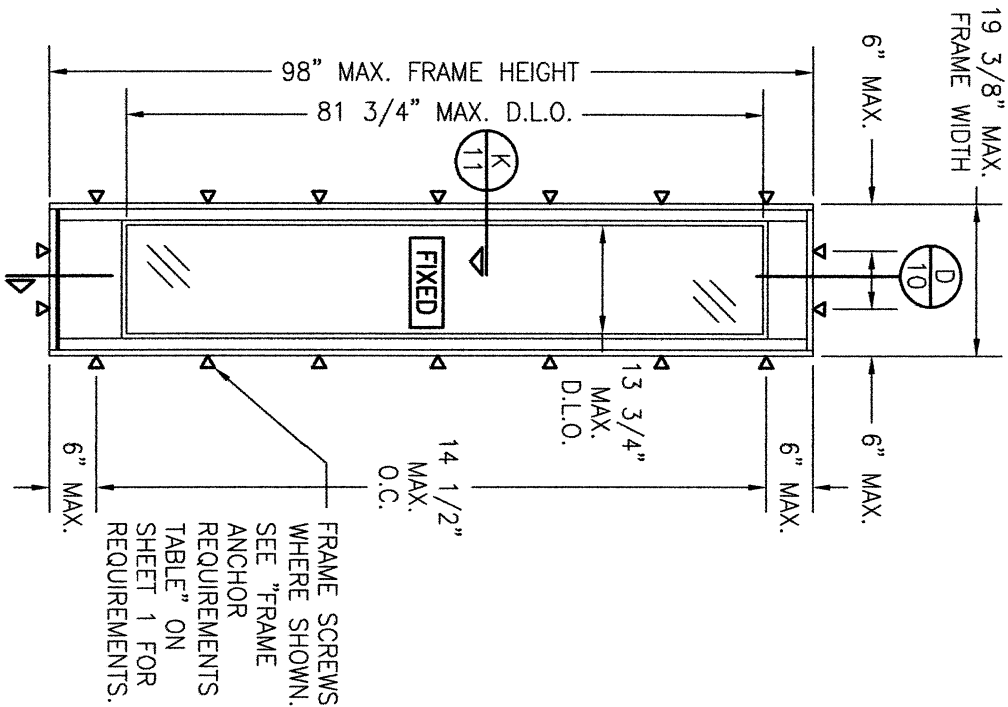
ALLOWABLE DESIGN PRESSURE
(SINGLE RECTANGULAR ACTIVE SIDELITE)

+45 / -50 PSF

D.L.O. NOTE:
MAX. D.L.O. DIMENSIONS SHOWN APPLY TO DOOR PANELS GLAZED WITH RECESSED MOLDING. WHEN APPLIED MOLDING IS USED, THE MAX. D.L.O. IS REDUCED 3/4".

NOTE: DOORS MAY BE FULLY GLAZED AS SHOWN, PARTIALLY PANELED OR FULLY PANELED. SEE SHEET 8 ELEVATIONS FOR PANELED DOORS.

DRAWING NO. 1898 SHEET NO. 4 OF 18	REV. C	<u>CERTIFICATION</u> WARREN W. SCHAEFER, P.E. P.E. NO. 44135	DRAWING TITLE 8 FT. NON-IMPACT IN-SWING WOOD DOORS		NO.	REVISION	DESCRIPTION	BY	DATE	PLOT: 1=24 DATE: 05/12/15	DRAWN BY: W.W.S. CHECKED BY: W.W.S.	
			CONSULTANTS W. W. SCHAEFER ENGINEERING & CONSULTING, P.A. 26376 NADIR ROAD; UNIT 309 PUNTA GORDA, FL 33983 PHONE: 561-744-3424	MANUFACTURER SIGNATURE DOOR INC. 401 PRIORITY STREET ALTOONA, PA 16602 814-949-2770								



**INTERIOR ELEVATION:
SINGLE RECTANGULAR FIXED
SIDELITE WITH 1.437" STILES**

SCALE: 1/2" = 1'-0"
(RECTANGULAR FIXED SIDELITE IS SHOWN.
SHAPED FIXED SIDELITES ALSO APPLY. FOR
FRAME SCREW POSITIONS AT THE HEAD AREA
OF SHAPED FIXED SIDELITES, SEE THE
SHAPED SINGLE DOOR ELEVATIONS)

**ALLOWABLE DESIGN PRESSURE
(SINGLE FIXED SIDELITE)**

+50/-50 PSF

NOTE: DOORS MAY BE FULLY
GLAZED AS SHOWN, PARTIALLY
PANELED OR FULLY PANELED.
SEE SHEET 8 ELEVATIONS FOR
PANELED DOORS.

**INTERIOR ELEVATION:
SINGLE RECTANGULAR FIXED SIDELITE WITH
2.50" STILES**

SCALE: 1/2" = 1'-0"
(RECTANGULAR FIXED SIDELITE IS SHOWN. SHAPED FIXED
SIDELITES ALSO APPLY. FOR FRAME SCREW POSITIONS AT
THE HEAD AREA OF SHAPED FIXED SIDELITES, SEE THE
SHAPED SINGLE DOOR ELEVATIONS)

**ALLOWABLE DESIGN PRESSURE
(SINGLE FIXED SIDELITE)**

+45/-50 PSF

SIDELIGHT NOTE:
SIDELITES ARE NOT APPROVED TO BE
STAND ALONE WINDOWS AND THEREFORE
MUST BE INSTALLED AS PART OF THE
DOOR SYSTEM IN THE SAME LOCATION AS
THE DOORS. NOTE THAT WATER
RESTRICTIONS APPLY TO THE SIDELITES
AND OPERABLE DOORS EQUALLY.

**INTERIOR ELEVATION:
SINGLE RECTANGULAR FIXED SIDELITE WITH
5" STILES**

SCALE: 1/2" = 1'-0"
(RECTANGULAR FIXED SIDELITE IS SHOWN. SHAPED FIXED
SIDELITES ALSO APPLY. FOR FRAME SCREW POSITIONS AT
THE HEAD AREA OF SHAPED FIXED SIDELITES, SEE THE
SHAPED SINGLE DOOR ELEVATIONS)

**ALLOWABLE DESIGN PRESSURE
(SINGLE FIXED SIDELITE)**

+55/-60 PSF

D.L.O. NOTE:
MAX. D.L.O. DIMENSIONS SHOWN APPLY TO DOOR PANELS
GLAZED WITH RECESSED MOLDING. WHEN APPLIED MOLDING
IS USED, THE MAX. D.L.O. IS REDUCED 3/4".

DRAWN BY:		CHECKED BY:		
W.M.S.		W.M.S.		
DATE:	05/12/15	DATE:		
1=24				
NO.	REVISION	DESCRIPTION	BY	DATE

SIGNATURE DOOR INC.
401 PRIORITY STREET
ALTOONA, PA 16602
814-949-2770

DRAWING TITLE
8 FT. NON-IMPACT IN-SWING WOOD DOORS

CONSULTANTS
**W. W. SCHAEFER ENGINEERING
& CONSULTING, P.A.**
26376 NADIR ROAD; UNIT 309
PUNTA GORDA, FL 33983
PHONE: 561-744-3424

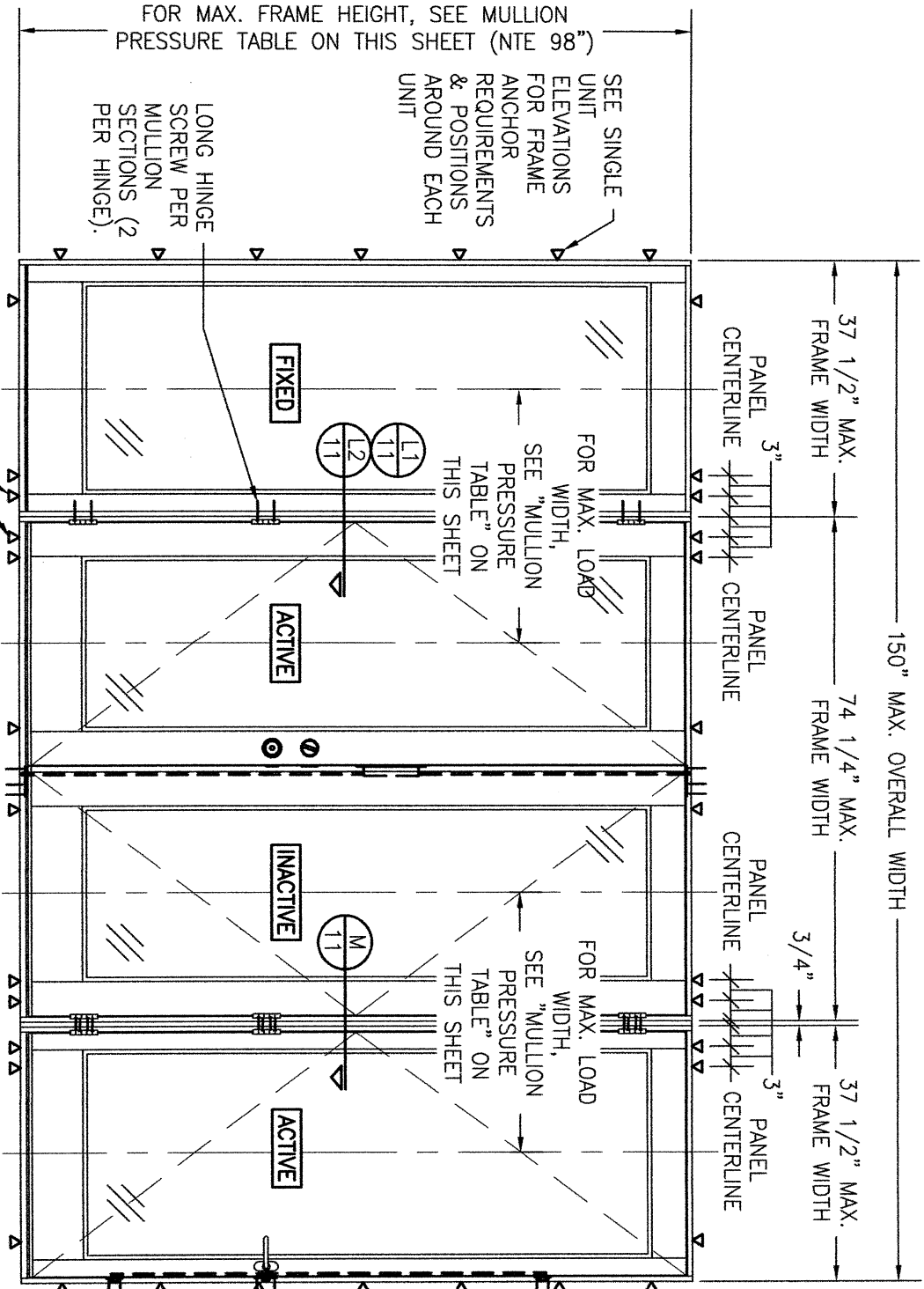
MANUFACTURER

CERTIFICATION

WARREN W. SCHAEFER, P.E.
P.E. NO. 44135

DRAWING NO. 1898 **REV.** C

SHEET NO. 5 **OF** 18



ADDITIONAL FRAME SCREWS WHERE SHOWN AT MULLION ENDS. SEE "FRAME ANCHOR REQUIREMENTS TABLE" ON SHEET 1 FOR REQUIREMENTS.

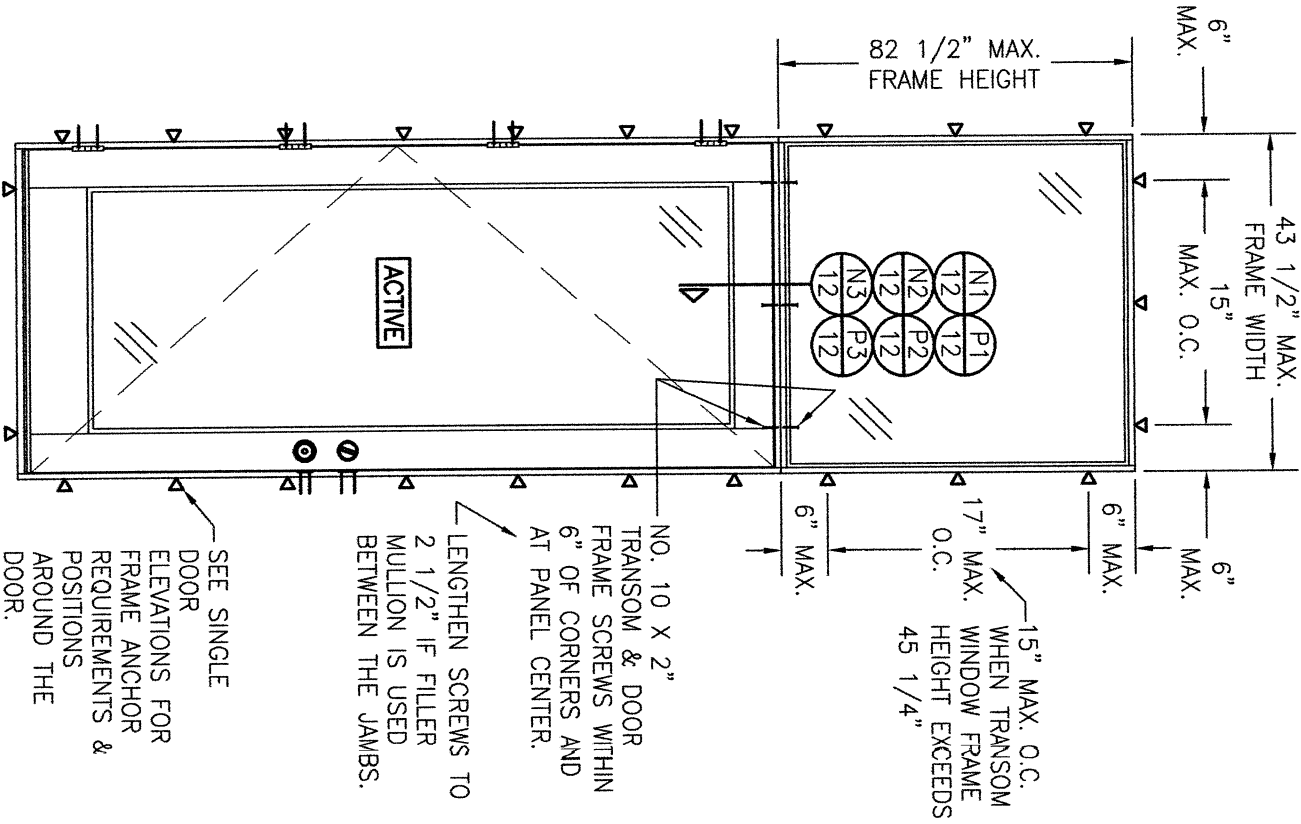
INTERIOR ELEVATION:
SIDE-BY-SIDE MULLED UNITS
SCALE: 1/2" = 1'-0"
(RECTANGULAR UNIT SHOWN. ARCHED TOP UNITS ALSO APPLY PROVIDING THE ARCH IS CONTINUOUS ACROSS THE HEAD)

MULTIPLE UNIT NOTES:

1. FOR ALL DETAIL NOT SHOWN, SEE INDIVIDUAL UNIT ELEVATIONS.
2. OXXX UNIT IS SHOWN. ALL OTHER FIXED/OPERABLE COMBINATIONS UP TO 4 PANELS WIDE ALSO APPLY WITH THE MULLION CONDITIONS SHOWN.
3. INDIVIDUAL DOOR SIZES SHALL BE RESTRICTED AS SPECIFIED IN THE SINGLE UNIT ELEVATIONS.
4. A WOOD FILLER MULLION IS REQUIRED BETWEEN ACTIVE/ACTIVE DOORS (NOT REQUIRED BETWEEN FIXED/ACTIVE OR FIXED/FIXED JAMBS.
4. THIS ELEVATION IS SHOWN WITH EACH DOOR AND SIDELITE HAVING ITS OWN SURROUND FRAME. USE OF A CONTINUOUS FRAME AROUND THE ENTIRE UNIT ALSO APPLIES. SEE CORNER CONSTRUCTION DESCRIPTION ON SHEET 1 FOR "MULLION JAMBS TO HEAD & SILL" DESCRIPTION WHEN HEAD & SILL FRAME IS CONTINUOUS.

MULLION ALLOWABLE DESIGN PRESSURE (SIDE-BY-SIDE UNITS)			
MAXIMUM MULLION SPAN (IN.)	MAXIMUM LOAD WIDTH (IN.)	ALLOWABLE PRESSURE (PSF)	
		POS.	NEG.
98	40.5	41.6	46.3
	37.5	45.0	50.0
	34.5	48.9	54.3
	31.5	53.5	59.5
92	28.5	59.2	65.0
	40.5	44.3	49.3
	37.5	47.9	53.2
	34.5	52.1	57.9
86	31.5	57.0	63.4
	30.5	58.9	65.0
	40.5	47.4	52.7
	37.5	51.2	56.9
80	34.5	55.7	61.9
	32.5	59.1	65.0
	40.5	47.4	56.7
	37.5	55.1	61.2
	34.5	59.9	65.0

NOTES:
1. SEE ELEVATIONS FOR DIMENSIONING OF LOAD WIDTH.
2. ALLOWABLE UNIT PRESSURE SHALL BE THE LESSER OF THE PRESSURE SHOWN IN THIS TABLE & THAT SPECIFIED FOR THE INDIVIDUAL DOOR.
3. WHEN A WOOD FILLER IS USED BETWEEN THE JAMBS, THE "LOAD WIDTH" VALUE NEED NOT CONSIDER THAT ADDED THICKNESS. VALUES STATED CONSIDER NO FILLER.



INTERIOR ELEVATION:
(SINGLE DOOR WITH TRANSOM)
SCALE: 1/2" = 1'-0"

TRANSOM UNIT NOTES:

1. RECTANGULAR TRANSOM UNIT SHOWN. SHAPED TRANSOM ALSO APPLIES.
2. TRANSOM MAY BE A DIRECT SET OR SASH SET WINDOW.
3. SEE INDIVIDUAL DOOR ELEVATIONS FOR DOOR DETAIL NOT SHOWN.
4. SEE ELEVATIONS ON SHEET 7 OR 8 FOR TRANSOM DETAIL NOT SHOWN.
5. UNIT SHOWN WITH JAMB TO JAMB MULLION. USE OF THE 3/4" AND 1 3/4" WOOD MULLIONS IS ALSO ACCEPTABLE.

ALLOWABLE DESIGN PRESSURE (SINGLE DOOR WITH TRANSOM)

+55/-65 PSF

NOTE: ALLOWABLE UNIT PRESSURE SHALL BE THE LESSER OF THE PRESSURE SHOWN IN THIS TABLE & THAT SPECIFIED FOR THE INDIVIDUAL DOOR.

NO.	REVISION	DESCRIPTION	BY	DATE

SIGNATURE DOOR INC.
401 PRIORITY STREET
ALTOONA, PA 16602
814-949-2770

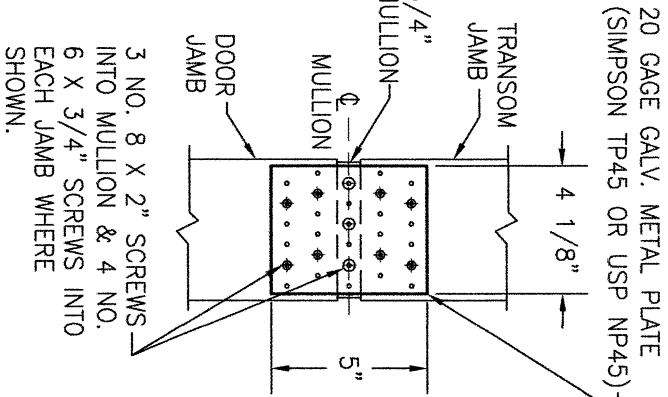
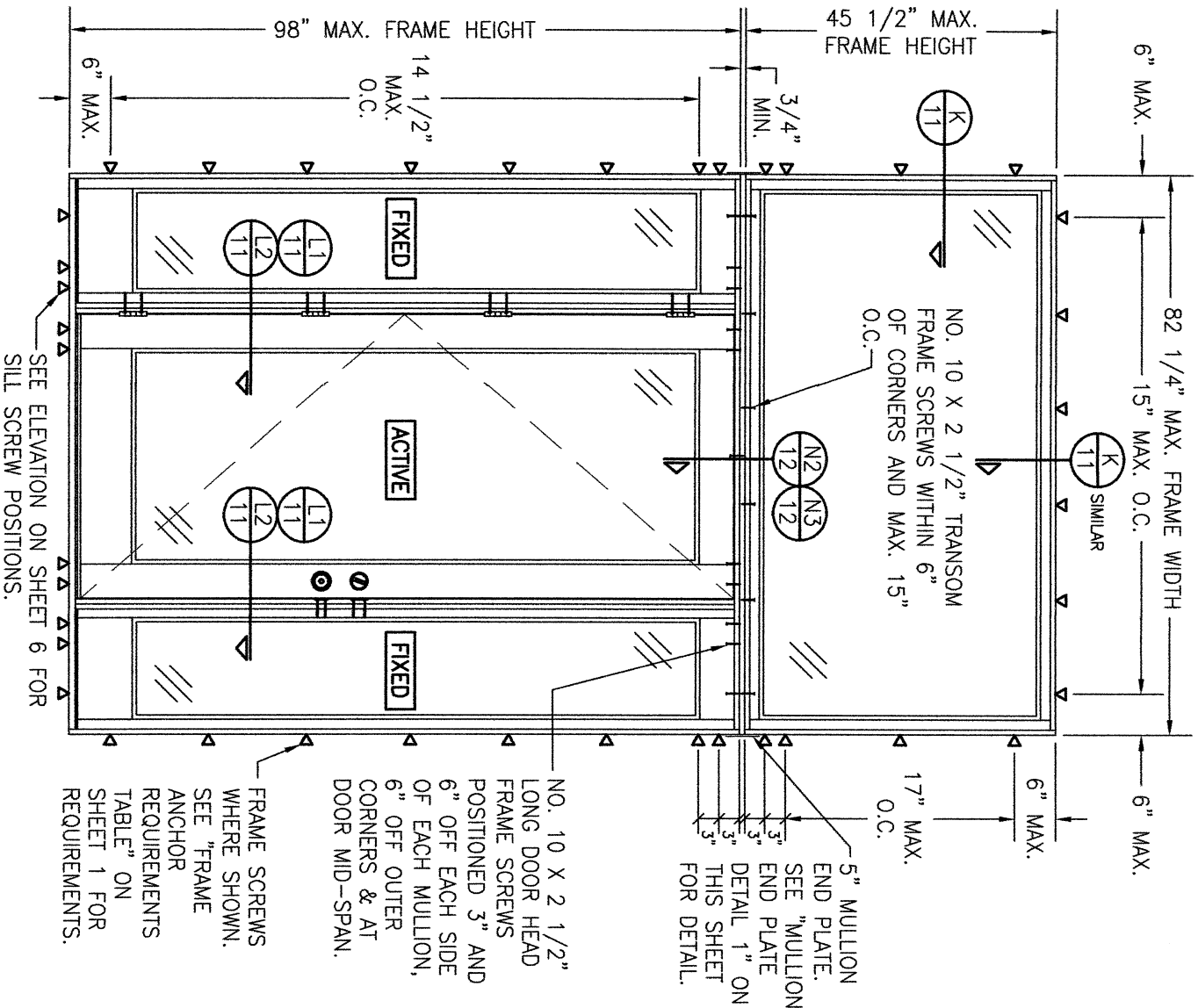
DRAWING TITLE
8 FT. NON-IMPACT IN-SWING WOOD DOORS

CONSULTANTS W. W. SCHAEFER ENGINEERING & CONSULTING, P.A. 26376 NADIR ROAD; UNIT 309 PUNTA GORDA, FL 33983 PHONE: 561-744-3424	MANUFACTURER
--	---------------------

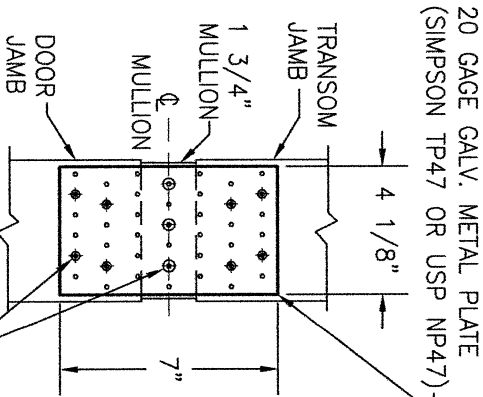
CERTIFICATION

WARREN W. SCHAEFER, P.E.
P.E. NO. 44135

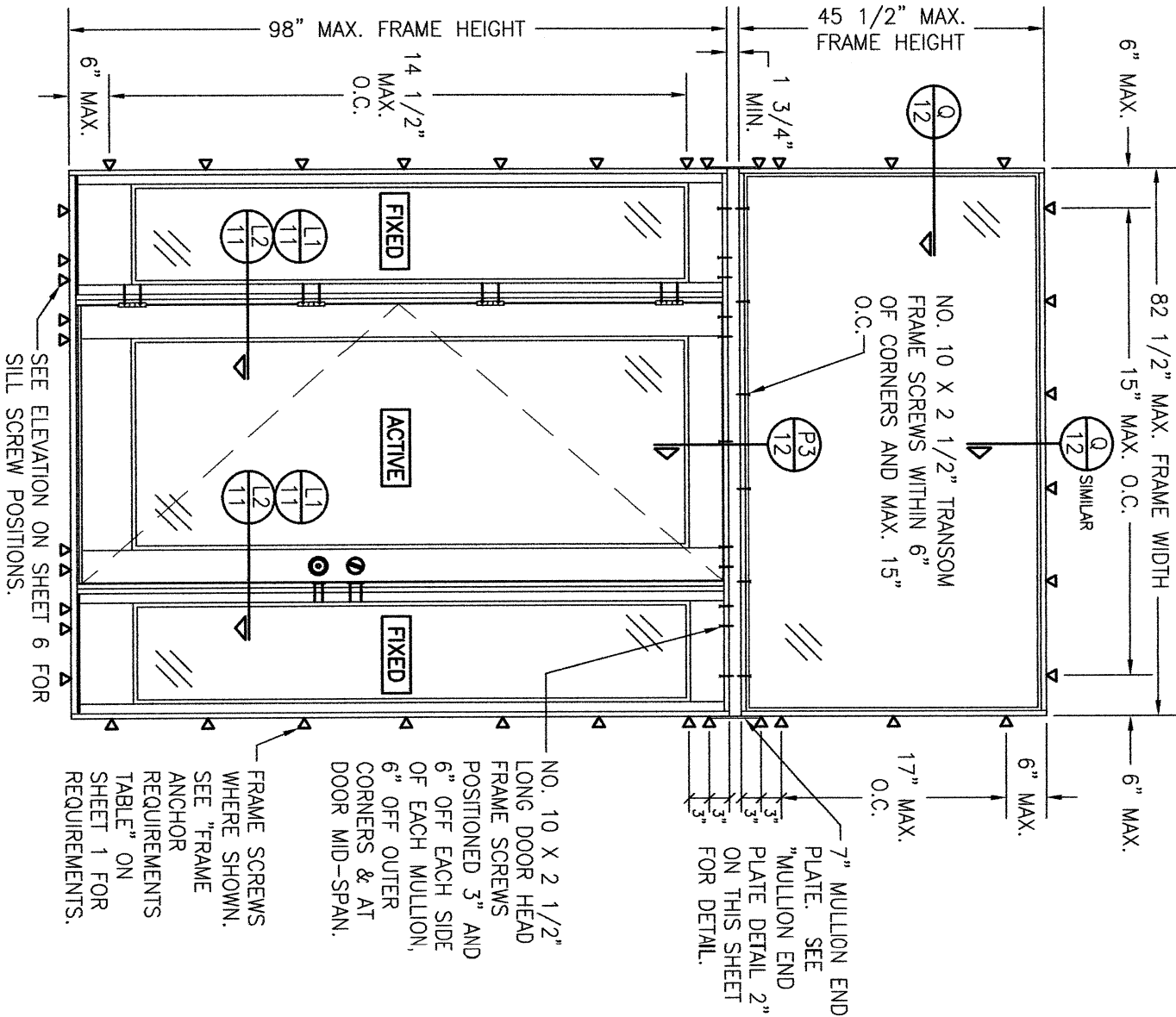
DRAWING NO. 1898
SHEET NO. 6 OF 18



MULLION END PLATE
DETAIL 1
(USED WITH 3/4" MULLION REINFORCEMENT)



MULLION END PLATE
DETAIL 2
(USED WITH 1 3/4" MULLION REINFORCEMENT)



MULLION END PLATE. SEE "MULLION END PLATE DETAIL 2" ON THIS SHEET FOR DETAIL.

NO. 10 X 2 1/2" LONG DOOR HEAD FRAME SCREWS POSITIONED 3" AND 6" OFF EACH SIDE OF EACH MULLION, 6" OFF OUTER CORNERS & AT DOOR MID-SPAN.

FRAME SCREWS WHERE SHOWN. SEE "FRAME ANCHOR REQUIREMENTS TABLE" ON SHEET 1 FOR REQUIREMENTS.

(OXO UNIT WITH DIRECT SET TRANSOM)
INTERIOR ELEVATION:
SCALE: 1/2" = 1'-0"

(RECTANGULAR TRANSOM SHOWN. RADIUS OR ANGLED TOP TRANSOM ALSO APPLIES.)

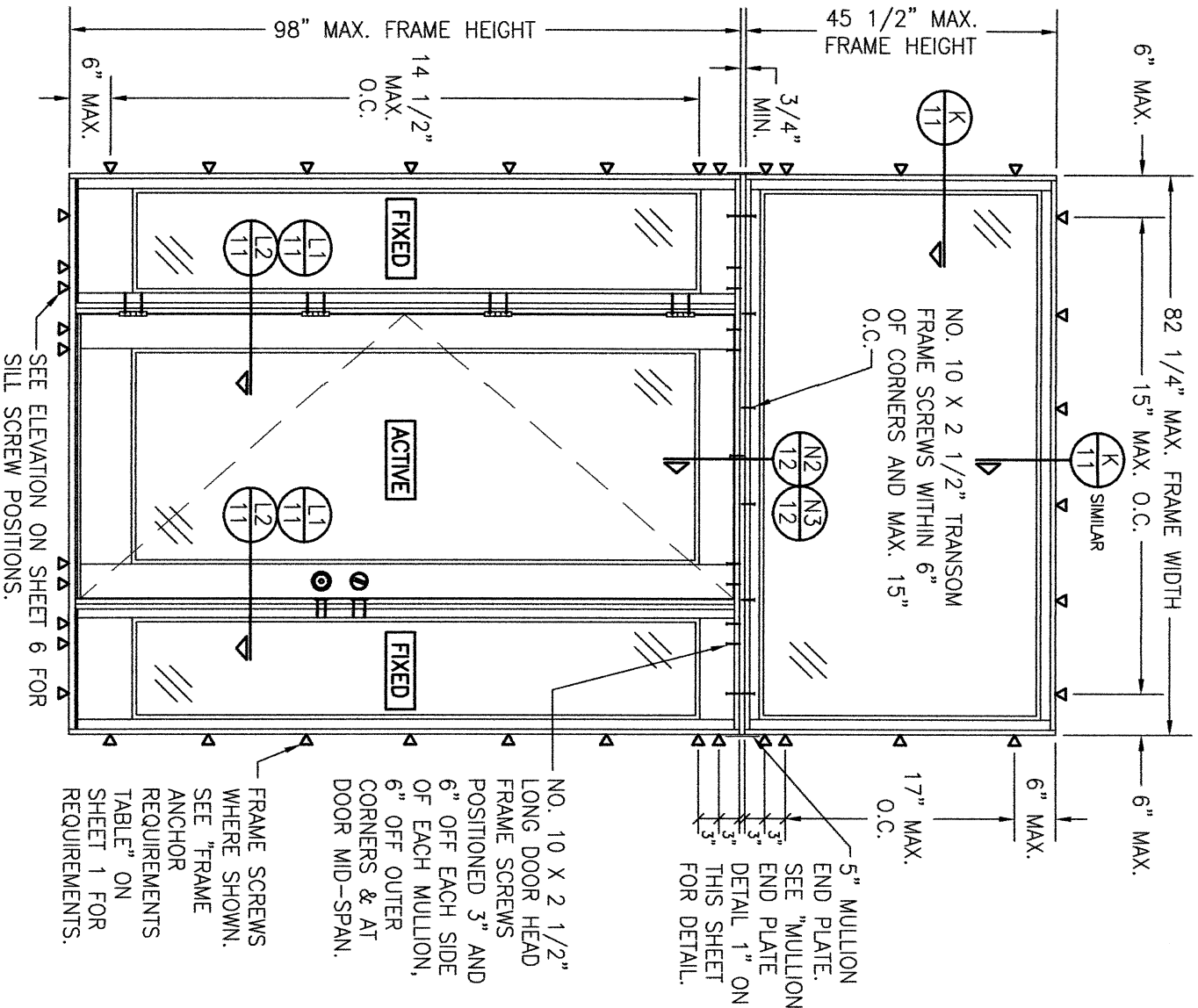
TRANSOM UNIT NOTES:

1. ALL HEAD FRAMES AND SILLS MUST BE CONTINUOUS ACROSS ENTIRE UNIT.
2. ALLOWABLE DESIGN PRESSURE, UNIT SIZE & OTHER MULLION CONDITIONS OUTSIDE OF THOSE SHOWN SHALL BE SUBJECT TO SEPARATE JOB SPECIFIC ENGINEER'S REVIEW AND CERTIFICATION.

ALLOWABLE DESIGN PRESSURE
(OXO UNIT WITH DIRECT SET TRANSOM)

+50/-50 PSF

NOTE: ALLOWABLE UNIT PRESSURE SHALL BE THE LESSER OF THE PRESSURE SHOWN IN THIS TABLE & THAT SPECIFIED FOR THE INDIVIDUAL DOOR.



5" MULLION END PLATE. SEE "MULLION END PLATE DETAIL 1" ON THIS SHEET FOR DETAIL.

NO. 10 X 2 1/2" LONG DOOR HEAD FRAME SCREWS POSITIONED 3" AND 6" OFF EACH SIDE OF EACH MULLION, 6" OFF OUTER CORNERS & AT DOOR MID-SPAN.

FRAME SCREWS WHERE SHOWN. SEE "FRAME ANCHOR REQUIREMENTS TABLE" ON SHEET 1 FOR REQUIREMENTS.

(OXO UNIT WITH SASH SET TRANSOM)
INTERIOR ELEVATION:
SCALE: 1/2" = 1'-0"

(RECTANGULAR TRANSOM SHOWN. RADIUS OR ANGLED TOP TRANSOM ALSO APPLIES.)

TRANSOM UNIT NOTES:

1. ALL HEAD FRAMES AND SILLS MUST BE CONTINUOUS ACROSS ENTIRE UNIT.
2. ALLOWABLE DESIGN PRESSURE, UNIT SIZE & OTHER MULLION CONDITIONS OUTSIDE OF THOSE SHOWN SHALL BE SUBJECT TO SEPARATE JOB SPECIFIC ENGINEER'S REVIEW AND CERTIFICATION.

ALLOWABLE DESIGN PRESSURE
(OXO UNIT WITH SASH SET TRANSOM)

+50/-50 PSF

NOTE: ALLOWABLE UNIT PRESSURE SHALL BE THE LESSER OF THE PRESSURE SHOWN IN THIS TABLE & THAT SPECIFIED FOR THE INDIVIDUAL DOOR.

NO.	REVISION	DESCRIPTION	BY	DATE

DRAWN BY: W.W.S. CHECKED BY: W.W.S.

PLOT: 1=24 DATE: 05/12/15

SIGNATURE DOOR INC.
401 PRIORITY STREET
ALTOONA, PA 16602
814-949-2770

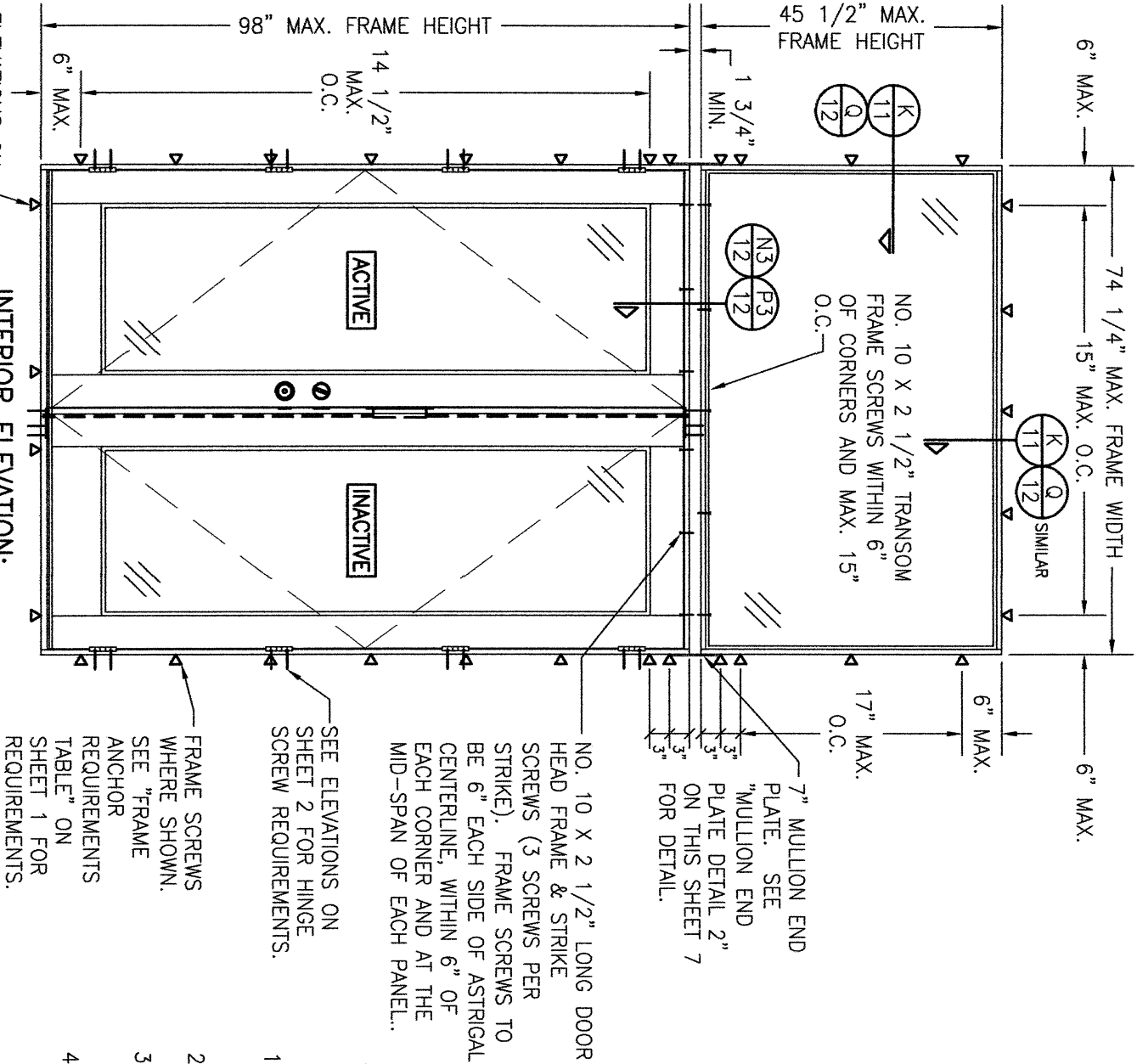
DRAWING TITLE
8 FT. NON-IMPACT IN-SWING WOOD DOORS

CONSULTANTS
W. W. SCHAEFER ENGINEERING & CONSULTING, P.A.
26376 NADIR ROAD, UNIT 309
PUNTA GORDA, FL 33983
PHONE: 561-744-3424

MANUFACTURER

CERTIFICATION
WARREN W. SCHAEFER, P.E.
P.E. NO. 44135

DRAWING NO. 1898 REV. C
SHEET NO. 7 OF 18



SEE ELEVATIONS ON SHEET 2 FOR SILL SCREW POSITIONS.

**INTERIOR ELEVATION:
(DOUBLE DOOR WITH TRANSOM)**

SCALE: 1/2" = 1'-0"

(RECTANGULAR TRANSOM SHOWN. RADIUS OR ANGLED TOP TRANSOM ALSO APPLIES.)

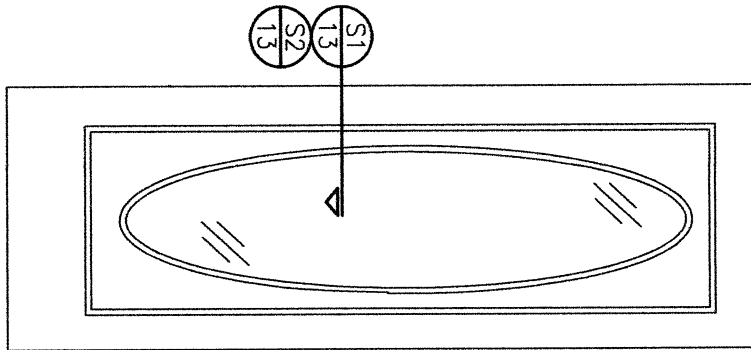
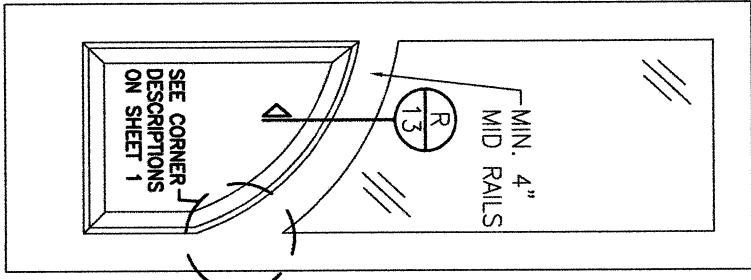
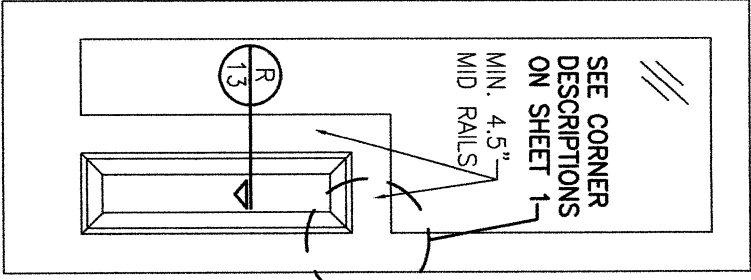
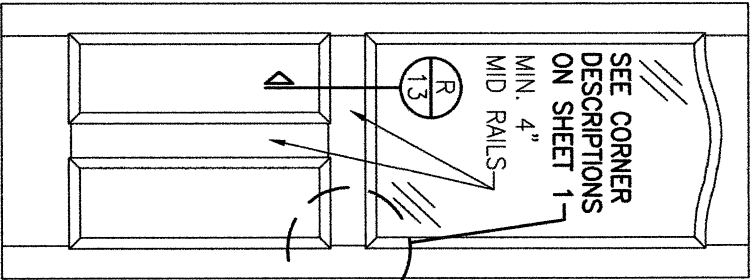
TRANSOM UNIT NOTES:

1. TRANSOM MAY BE A DIRECT SET OR SASH SET WINDOW.
2. ALLOWABLE DESIGN PRESSURE, UNIT SIZE & OTHER MULLION CONDITIONS OUTSIDE OF THOSE SHOWN SHALL BE SUBJECT TO SEPARATE JOB SPECIFIC ENGINEER'S REVIEW AND CERTIFICATION.
3. RECTANGULAR TRANSOM UNIT SHOWN. RADIUS AND ANGLED TOP TRANSOM ALSO APPLIES.
4. SEE INDIVIDUAL DOOR ELEVATIONS FOR DOOR DETAIL NOT SHOWN.

**ALLOWABLE DESIGN PRESSURE
(DOUBLE DOOR WITH TRANSOM)**

+55/-65 PSF

NOTE: ALLOWABLE UNIT PRESSURE SHALL BE THE LESSER OF THE PRESSURE SHOWN IN THIS TABLE & THAT SPECIFIED FOR THE INDIVIDUAL DOOR.



**EXTERIOR ELEVATION
SOLID RAISED PANEL
WITH STANDARD MID
RAILS**

**EXTERIOR ELEVATION
SOLID RAISED PANEL
WITH CORNERED MID
RAILS**

**EXTERIOR ELEVATION
SOLID RAISED PANEL
WITH ARCHED/SHAPED
MID RAILS**

**EXTERIOR ELEVATION
RAISED PANEL WITH
GLASS GLAZED TO
PANEL**

- 1) TOP & MID RAILS MAY BE OF ANY CONFIGURATION PROVIDING THE SMALLEST CROSS SECTION OF RAILS IS EQUAL TO OR LARGER THAN THAT DETAILED IN DRAWINGS.
- 2) MULTIPLE MID RAIL (BOTH HORIZONTAL & VERTICAL) MAY BE USED WITH THESE PANELS.
- 3) PARTIAL PANEL CONDITION IS SHOWN ABOVE. FULL PANEL DOORS AND OTHER PANEL CONFIGURATIONS ARE ALSO PART OF THIS APPROVAL PROVIDING THEY ARE SIMILAR IN CONSTRUCTION TO THAT SHOWN ABOVE.
- 4) PANEL ONLY IS SHOWN. FOR INSTALLATION INTO FRAME, SEE OTHER ELEVATIONS.

- 1) DAY LIGHT OPENING IN PANEL DOOR MAY BE OF ANY CONFIGURATION.
- 2) FULL LIGHT & OVAL CONDITION IS SHOWN. PARTIAL LIGHT & OTHER APPLICABLE PROVIDING PANEL CONDITIONS ARE WITHIN WHAT IS SPECIFIED IN THESE DRAWINGS.
- 3) PANEL ONLY IS SHOWN. FOR INSTALLATION INTO FRAME, SEE OTHER ELEVATIONS.

DRAWING TITLE
8 FT. NON-IMPACT IN-SWING WOOD DOORS

CONSULTANTS
**W. W. SCHAEFER ENGINEERING
& CONSULTING, P.A.**
26376 NADIR ROAD; UNIT 309
PUNTA GORDA, FL 33983
PHONE: 561-744-3424

MANUFACTURER

SIGNATURE DOOR INC.
401 PRIORITY STREET
ALTOONA, PA 16602
814-949-2770

CERTIFICATION

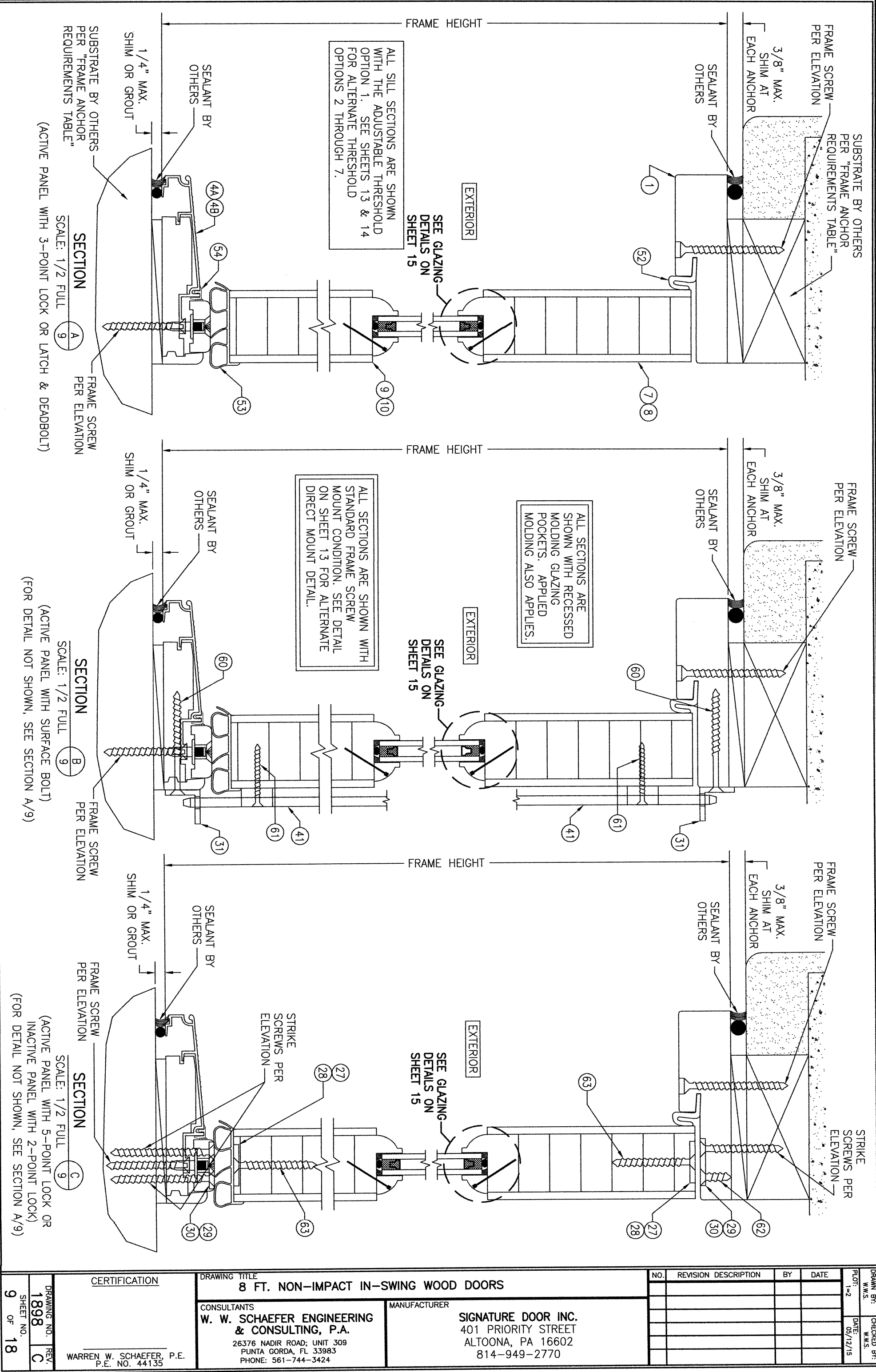
WARREN W. SCHAEFER, P.E.
P.E. NO. 44135

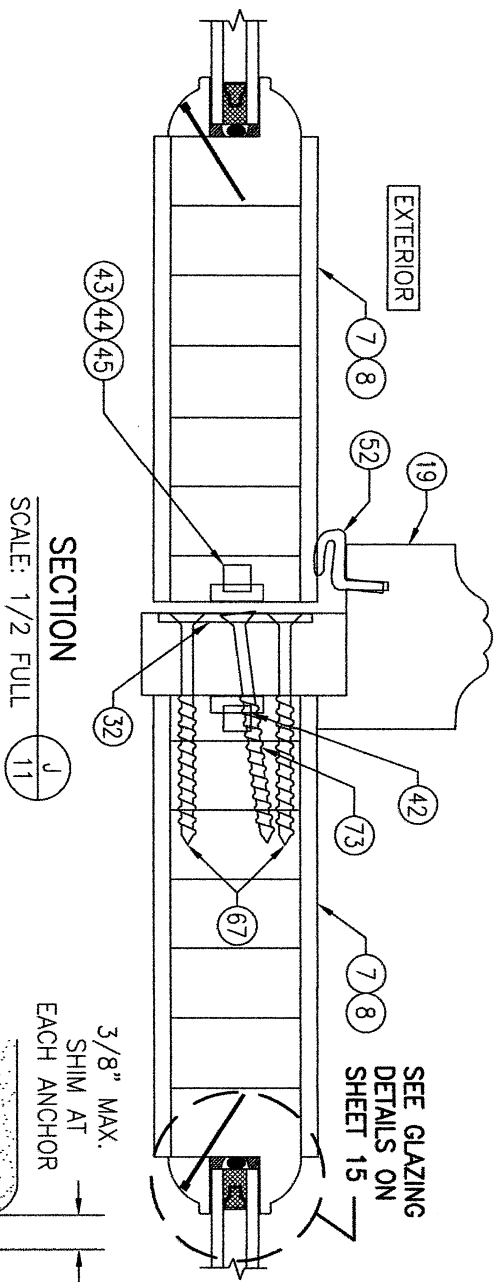
NO.	REVISION	DESCRIPTION	BY	DATE	PLOT: 1=24	DRAWN BY: W.W.S.	CHECKED BY: W.W.S.
						DATE: 03/12/15	

DRAWING NO.
1898

SHEET NO.
8 OF 18

REV.
C

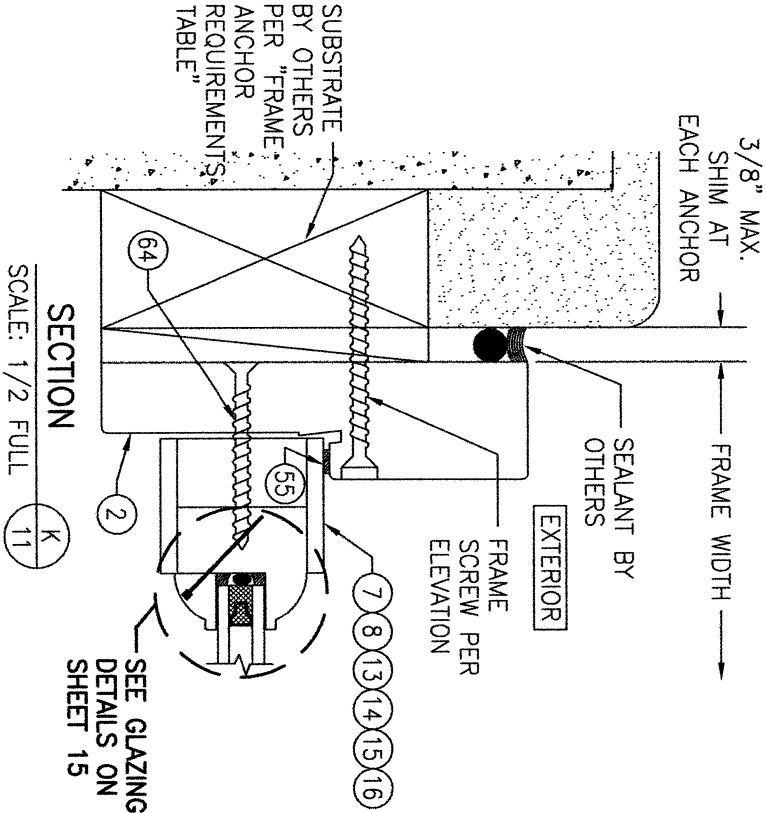




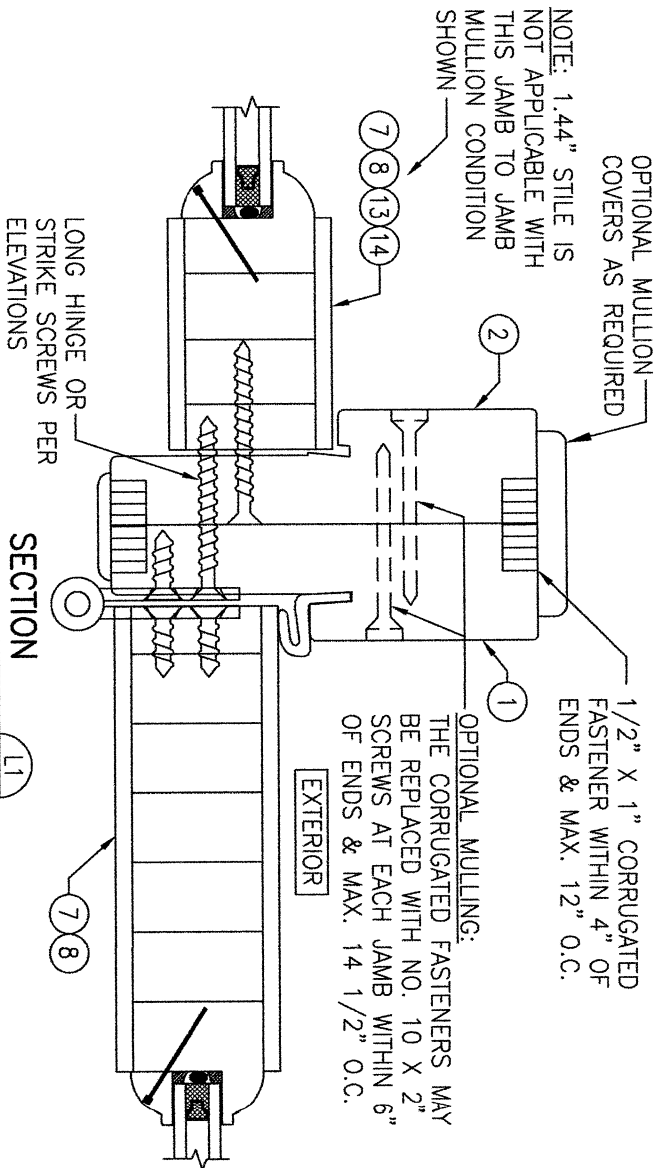
SEE GLAZING
DETAILS ON
SHEET 15

ALL SECTIONS ARE
SHOWN WITH RECESSED
MOLDING GLAZING
POCKETS. APPLIED
MOLDING ALSO APPLIES.

ALL SECTIONS ARE SHOWN WITH
STANDARD FRAME SCREW
MOUNT CONDITION. SEE DETAIL
ON SHEET 13 FOR ALTERNATE
DIRECT MOUNT DETAIL.



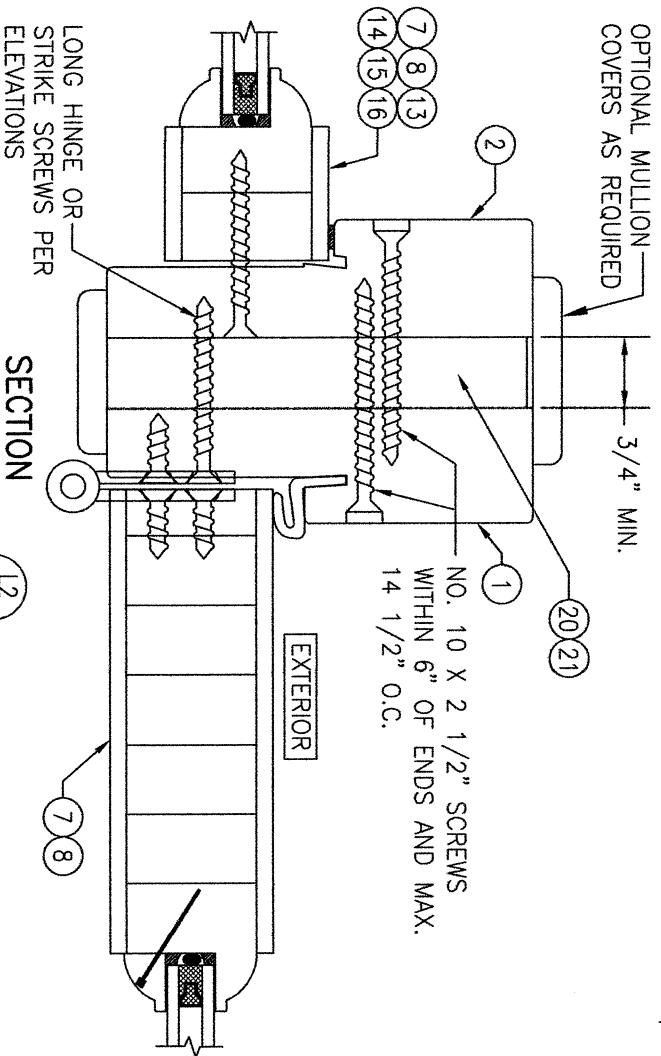
SEE GLAZING
DETAILS ON
SHEET 15



1/2" X 1" CORRUGATED
FASTENER WITHIN 4" OF
ENDS & MAX. 12" O.C.

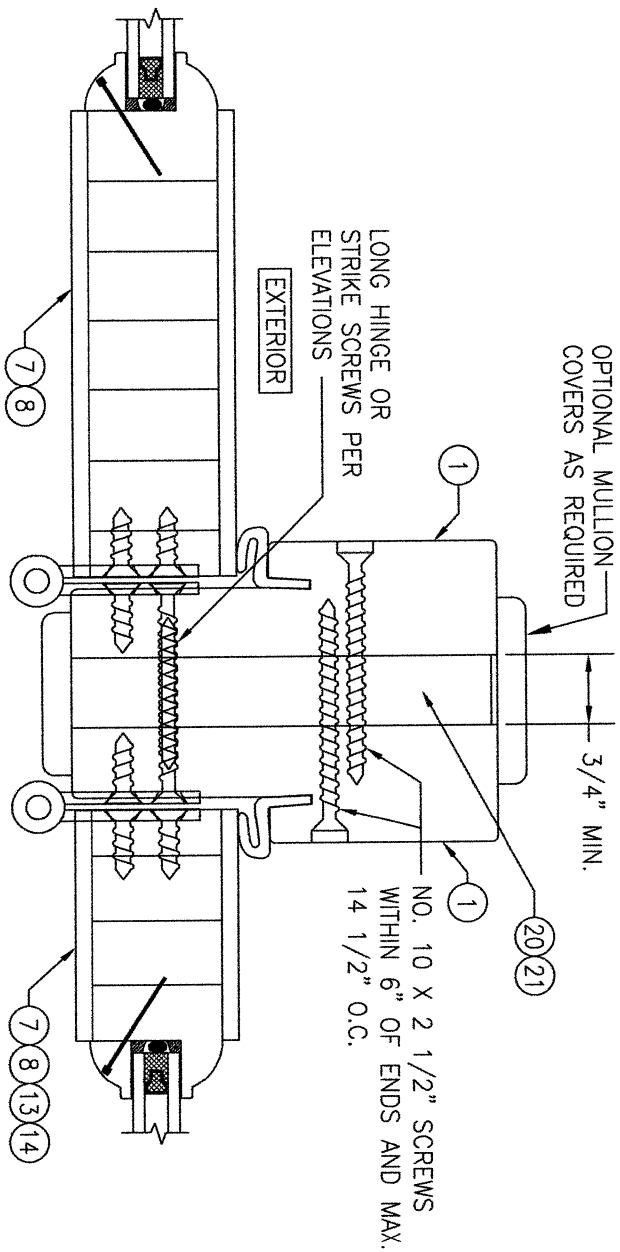
OPTIONAL MULLING:
THE CORRUGATED FASTENERS MAY
BE REPLACED WITH NO. 10 X 2"
SCREWS AT EACH JAMB WITHIN 6"
OF ENDS & MAX. 14 1/2" O.C.

(FIXED SIDELITE TO ACTIVE DOOR)
(FOR DETAIL NOT SHOWN, SEE OTHER SECTIONS)



NO. 10 X 2 1/2" SCREWS
WITHIN 6" OF ENDS AND MAX.
14 1/2" O.C.

(FIXED SIDELITE TO ACTIVE DOOR)
(FOR DETAIL NOT SHOWN, SEE OTHER SECTIONS)



(ACTIVE DOOR TO ACTIVE DOOR
OR ACTIVE SIDELITE)
(FOR DETAIL NOT SHOWN, SEE OTHER SECTIONS)

DATE	BY	REVISION	DESCRIPTION
05/12/15		1-2	

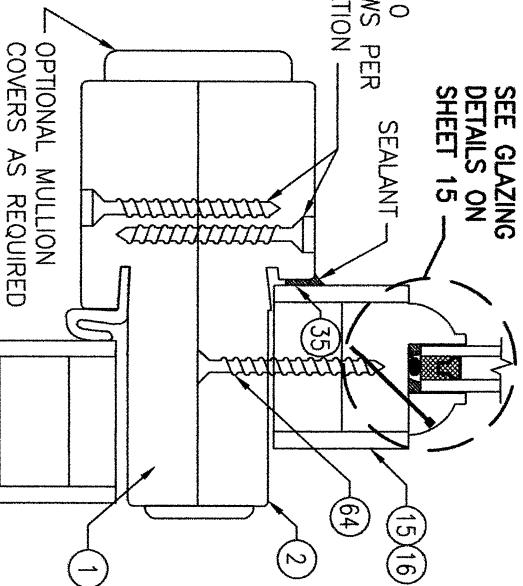
DATE	BY	REVISION	DESCRIPTION
05/12/15		1-2	

DATE	BY	REVISION	DESCRIPTION
05/12/15		1-2	

DATE	BY	REVISION	DESCRIPTION
05/12/15		1-2	

SEE GLAZING
DETAILS ON
SHEET 15

NO. 10
SCREWS PER
ELEVATION



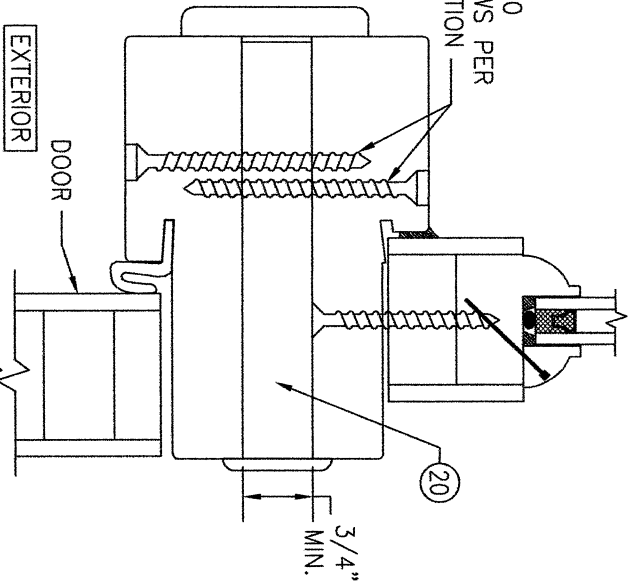
SECTION

SCALE: 1/2 FULL

(DOOR WITH SASH SET
TRANSOM AND
NON-REINFORCED MULLION)

(FOR DETAIL NOT SHOWN, SEE
OTHER SECTIONS)

NO. 10
SCREWS PER
ELEVATION



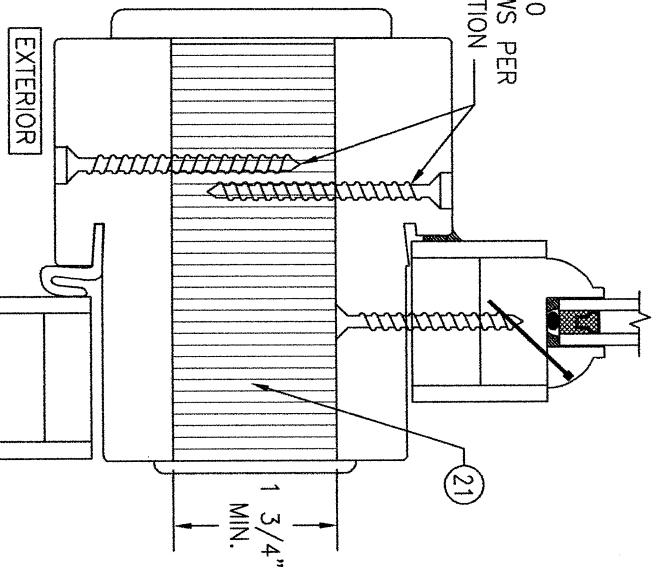
SECTION

SCALE: 1/2 FULL

(DOOR WITH SASH SET
TRANSOM AND REINFORCED
MULLION)

(FOR DETAIL NOT SHOWN, SEE
SECTION N1/12)

NO. 10
SCREWS PER
ELEVATION



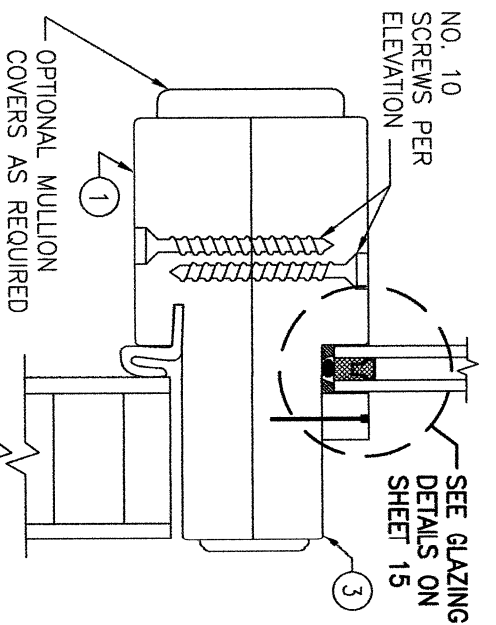
SECTION

SCALE: 1/2 FULL

(DOOR WITH SASH SET
TRANSOM AND REINFORCED
MULLION)

(FOR DETAIL NOT SHOWN, SEE
SECTION N1/12)

NO. 10
SCREWS PER
ELEVATION



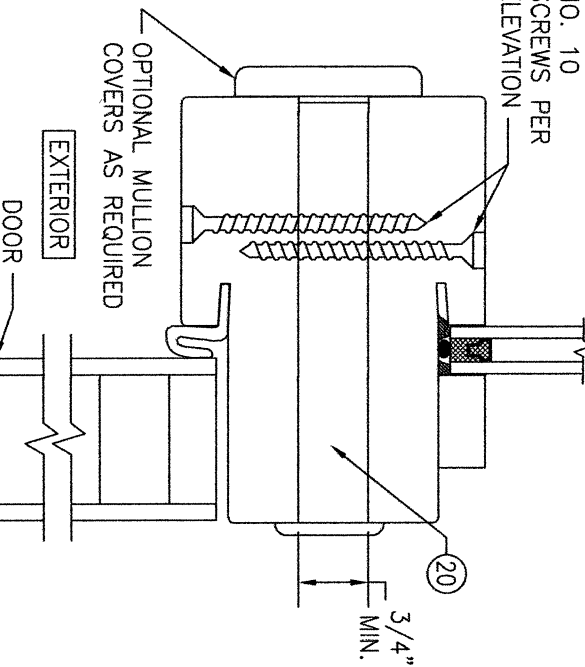
SECTION

SCALE: 1/2 FULL

(DOOR WITH DIRECT SET
TRANSOM AND
NON-REINFORCED MULLION)

(FOR DETAIL NOT SHOWN, SEE
OTHER SECTIONS)

NO. 10
SCREWS PER
ELEVATION



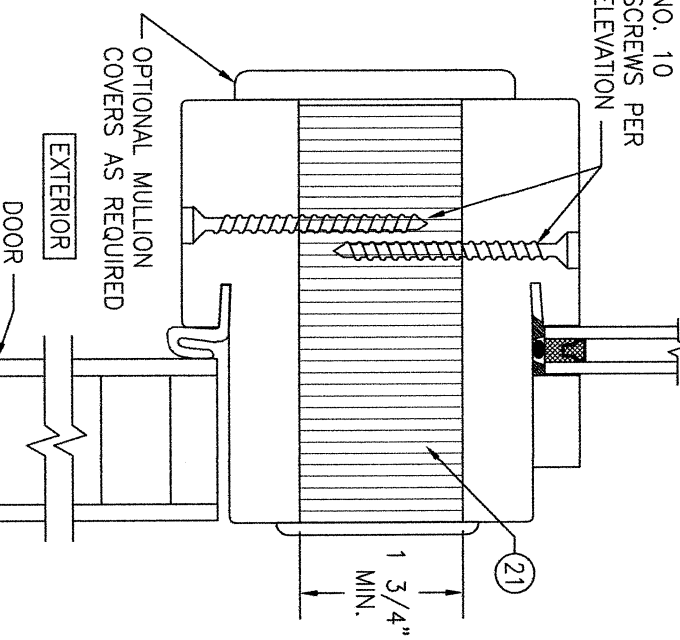
SECTION

SCALE: 1/2 FULL

(DOOR WITH DIRECT SET
TRANSOM AND 3/4\"/>

(FOR DETAIL NOT SHOWN, SEE
SECTION P1/12)

NO. 10
SCREWS PER
ELEVATION



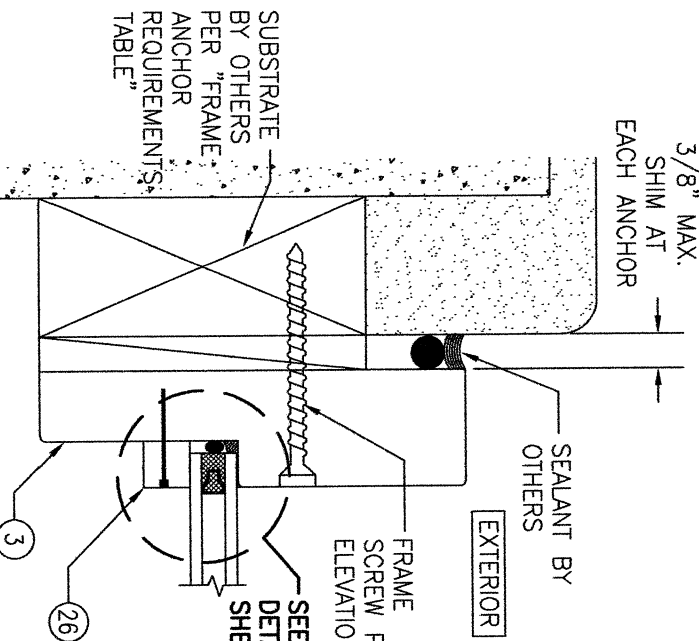
SECTION

SCALE: 1/2 FULL

(DOOR WITH DIRECT SET
TRANSOM AND 1 3/4\"/>

(FOR DETAIL NOT SHOWN, SEE
SECTION P1/12)

3/8\"/>



SECTION

SCALE: 1/2 FULL

SEE GLAZING
DETAILS ON
SHEET 15

ALL SECTIONS ARE
SHOWN WITH RECESSED
MOLDING GLAZING
POCKETS. APPLIED
MOLDING ALSO APPLIES.

ALL SECTIONS ARE SHOWN WITH
STANDARD FRAME SCREW
MOUNT CONDITION. SEE DETAIL
ON SHEET 13 FOR ALTERNATE
DIRECT MOUNT DETAIL.

CERTIFICATION

WARREN W. SCHAEFER, P.E.
P.E. NO. 44135

DRAWING TITLE
8 FT. NON-IMPACT IN-SWING WOOD DOORS

CONSULTANTS
W. W. SCHAEFER ENGINEERING
& CONSULTING, P.A.
26376 NADIR ROAD; UNIT 309
PUNTA GORDA, FL 33983
PHONE: 561-744-3424

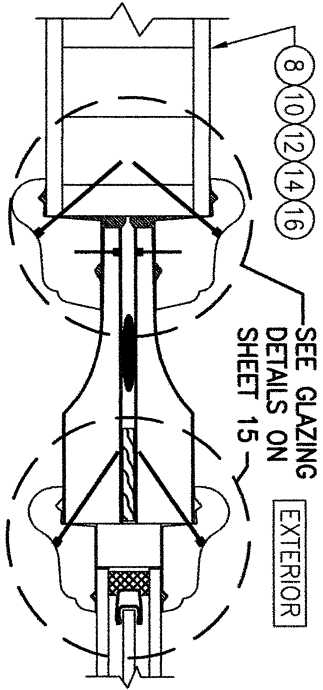
MANUFACTURER

SIGNATURE DOOR INC.
401 PRIORITY STREET
ALTOONA, PA 16602
814-949-2770

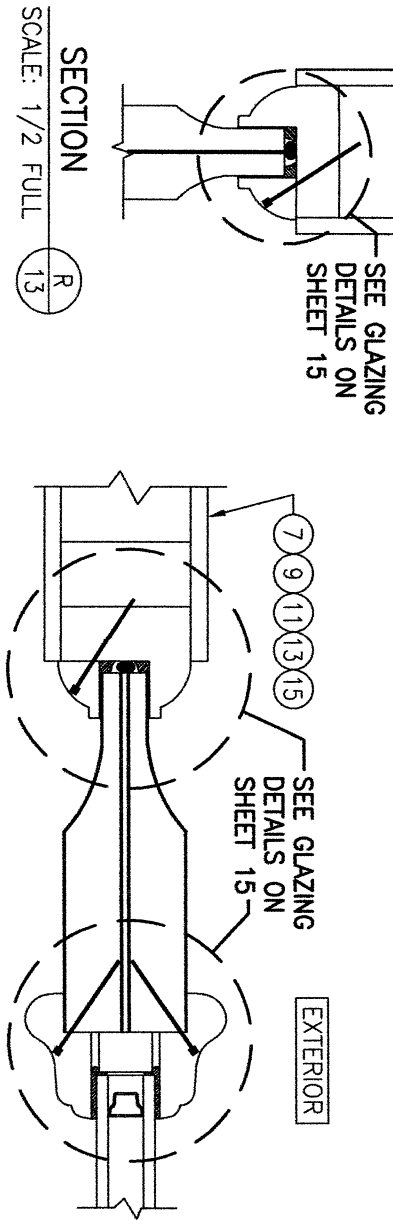
NO.	REVISION	DESCRIPTION	BY	DATE
1-2				05/12/15

DRAWN BY: W.W.S.
CHECKED BY: W.W.S.
DATE: 05/12/15

DRAWING NO. 1898
REV. C
SHEET NO. 12 OF 18

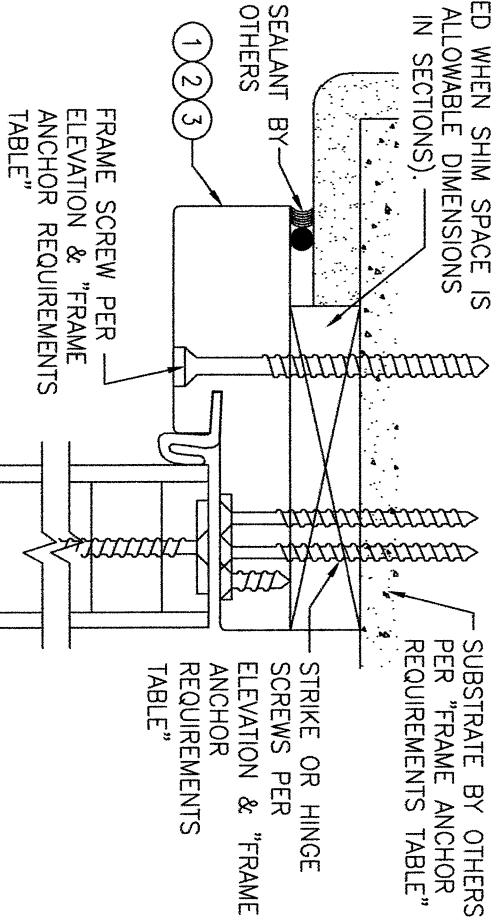


SECTION S1
SCALE: 1/2 FULL



SECTION S2
SCALE: 1/2 FULL

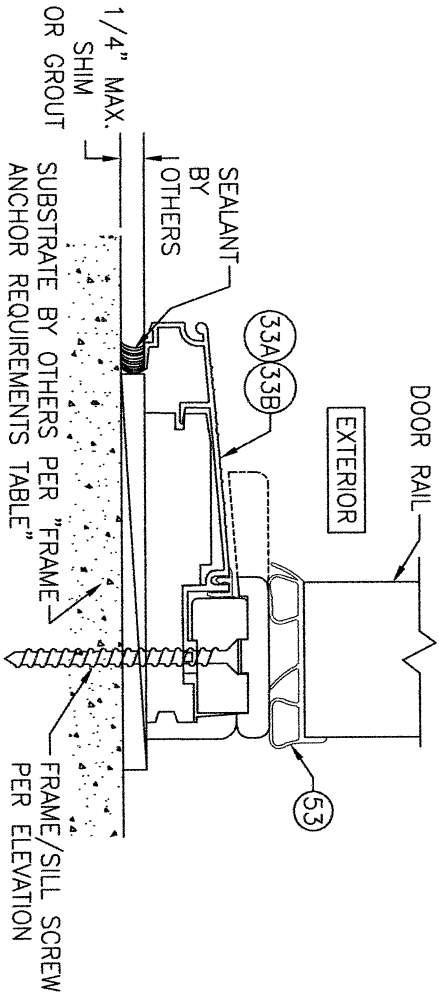
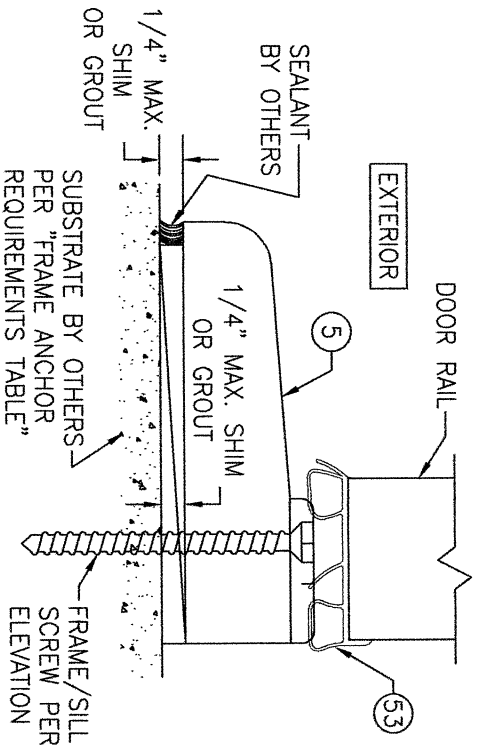
CONTINUOUS WOOD MEMBER LESS IN THICKNESS THAN A 2X BUCK TO BE MIN. 3 1/2" DEEP (NOT REQUIRED WHEN SHIM SPACE IS WITHIN ALLOWABLE DIMENSIONS SHOWN IN SECTIONS).



EXTERIOR

OPTIONAL DIRECT MOUNT DETAIL TO SUBSTRATE WITH SPACER

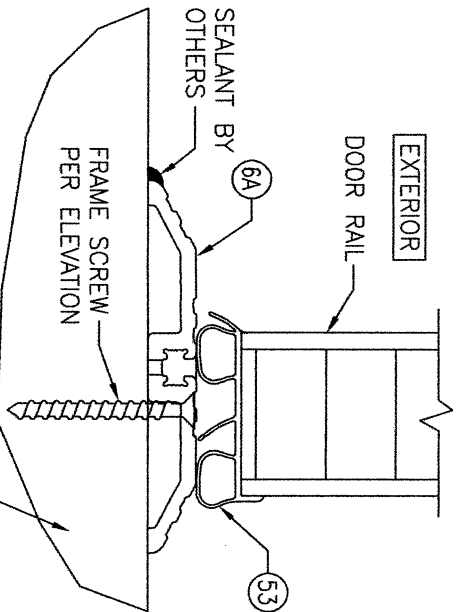
(HEAD SECTION SHOWN; SILL & SIDES ARE INSTALLED THE SAME)
(DIRECT MOUNT CONDITION IS NOT APPLICABLE AT SILL)
(FOR DETAIL NOT SHOWN, SEE OTHER SECTIONS)



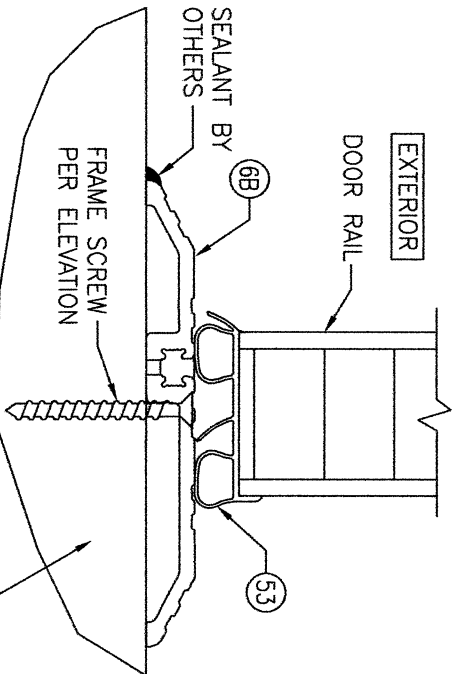
NO.	REVISION	DESCRIPTION	BY	DATE
1-2				

DRAWING TITLE		CONSULTANTS		MANUFACTURER	
8 FT. NON-IMPACT IN-SWING WOOD DOORS		W. W. SCHAEFER ENGINEERING & CONSULTING, P.A.		SIGNATURE DOOR INC.	
		26376 NADIR ROAD; UNIT 309 PUNTA GORDA, FL 33983 PHONE: 561-744-3424		401 PRIORITY STREET ALTOONA, PA 16602 814-949-2770	

CERTIFICATION		DRAWING NO.		SHEET NO.	
WARREN W. SCHAEFER, P.E. P.E. NO. 44135		1898		13 OF 18	
		C			



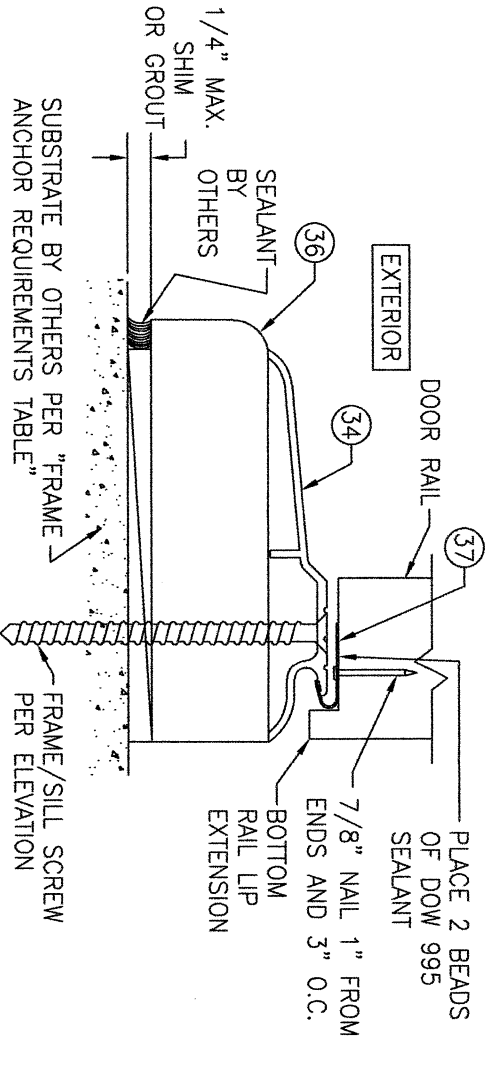
ALTERNATE 4" ADA THRESHOLD OPTION 4
(MAY REPLACE ADJUSTABLE THRESHOLD SHOWN IN ALL SECTIONS)



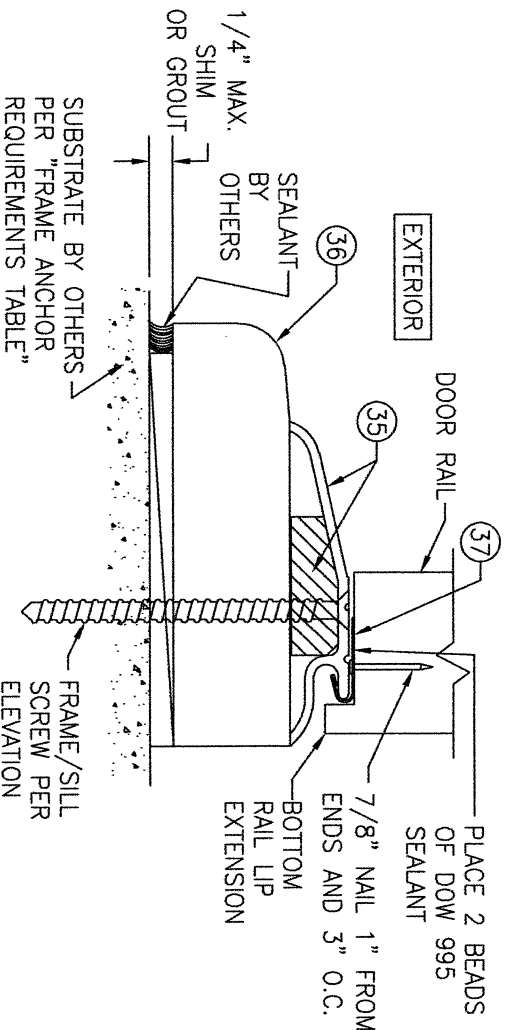
ALTERNATE 5" ADA THRESHOLD OPTION 5
(MAY REPLACE ADJUSTABLE THRESHOLD SHOWN IN ALL SECTIONS)

ADA THRESHOLD OPTION 4 & 5 NOTES (4" & 5" THRESHOLDS):

1. SURFACE BOLT LOCKS MAY NOT BE USED WHEN THE 4" ADA THRESHOLD IS USED. THEREFORE, LOCK OPTION 2 MAY NOT BE USED WITH A 4" ADA SILL.
2. WHEN A SURFACE BOLT LOCK IS USED WITH THE 5" THRESHOLD, THE THRESHOLD SHALL BE POSITIONED TO ALLOW FOR THE BOLT TO STRIKE THE FLAT TOP SURFACE OF THE THRESHOLD.
3. WHEN AN ADA THRESHOLD IS USED, SILL LOCK STRIKES ARE NOT NECESSARY & LOCK BOLTS SHALL STRIKE DIRECTLY INTO THE THRESHOLD. LONG STRIKE SCREWS SPECIFIED IN THE ELEVATIONS SHALL BE REPLACED WITH 2 ADDITIONAL FRAME/SILL ANCHORS SUCH THAT A TOTAL OF 4 ANCHORS EXIST POSITIONED 3" & 6" OFF EACH SIDE OF THE MEETING STILE CENTERLINE.



THRESHOLD OPTION 6 DETAIL
FOR DETAIL & REINFORCEMENT PLATES NOT SHOWN, SEE SECTIONS A/9, B/9, C/9 & D/10



THRESHOLD OPTION 7 DETAIL
FOR DETAIL & REINFORCEMENT PLATES NOT SHOWN, SEE SECTIONS A/9, B/9, C/9 & D/10

NO.	REVISION	DESCRIPTION	BY	DATE	PLT:	DRAWN BY:	CHECKED BY:
					1=2	W.M.S.	W.M.S.
					DATE:		
					05/12/15		

MANUFACTURER

SIGNATURE DOOR INC.
401 PRIORITY STREET
ALTOONA, PA 16602
814-949-2770

DRAWING TITLE

8 FT. NON-IMPACT IN-SWING WOOD DOORS

CONSULTANTS

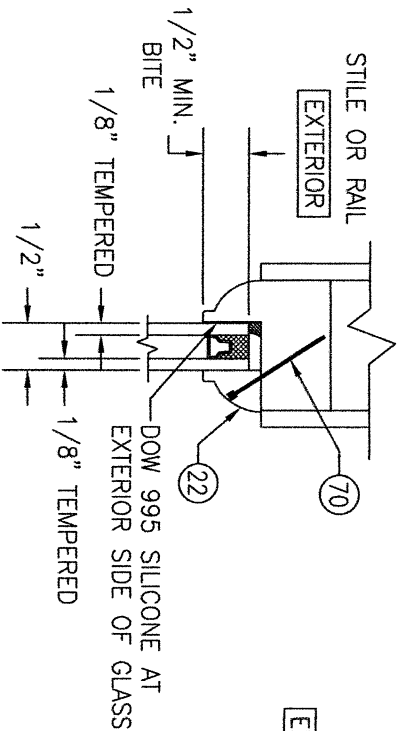
W. W. SCHAEFER ENGINEERING & CONSULTING, P.A.
26376 NADIR ROAD; UNIT 309
PUNTA GORDA, FL 33983
PHONE: 561-744-3424

CERTIFICATION

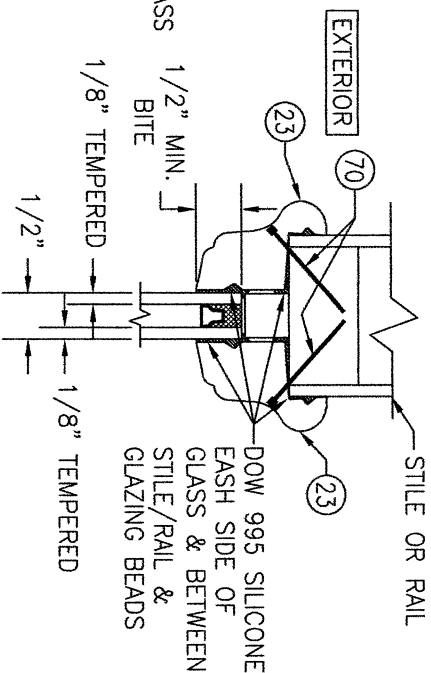
WARREN W. SCHAEFER, P.E.
P.E. NO. 44135

DRAWING NO. 1898
REV. C

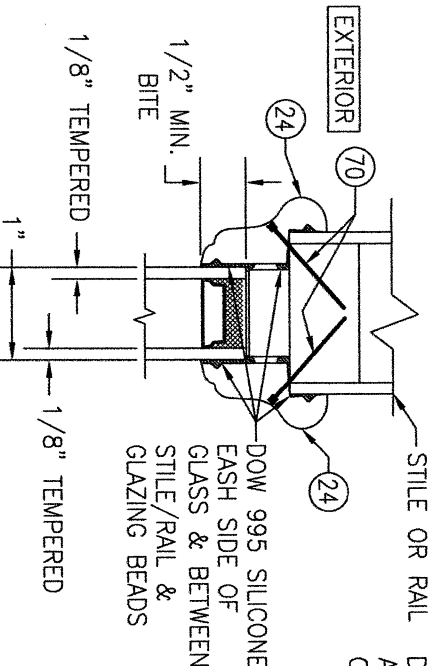
SHEET NO. 14 OF 18



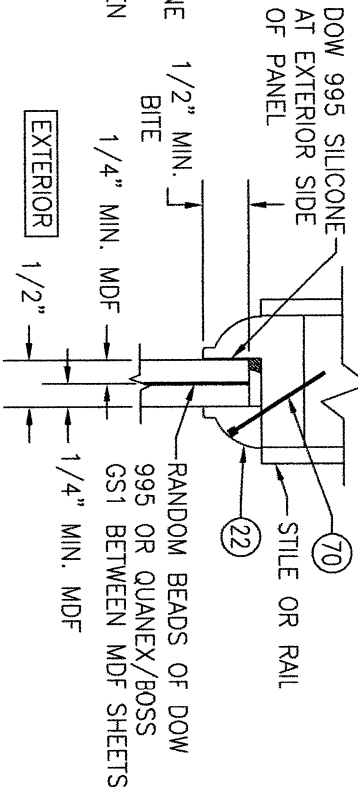
TYPICAL GLAZING DETAIL 1
(1/2" I.G. GLASS IN PANEL WITH
RECESSED MOLDING)



TYPICAL GLAZING DETAIL 2
(1/2" I.G. GLASS IN PANEL WITH
APPLIED MOLDING)

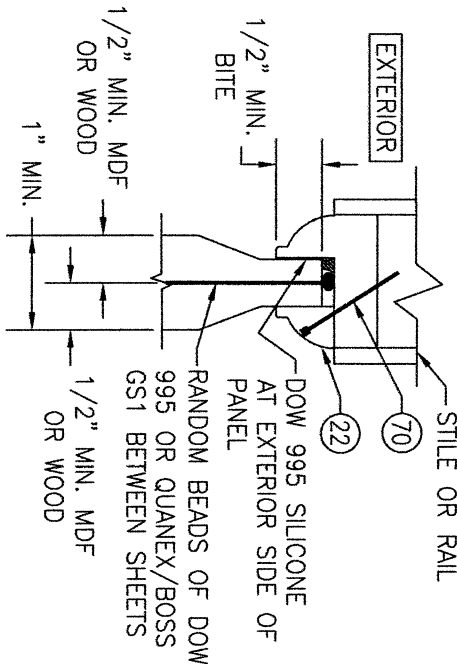


TYPICAL GLAZING DETAIL 3
(1" I.G. GLASS IN PANEL WITH APPLIED MOLDING)
(INSERTION OF DECO GLASS MAY APPLY)

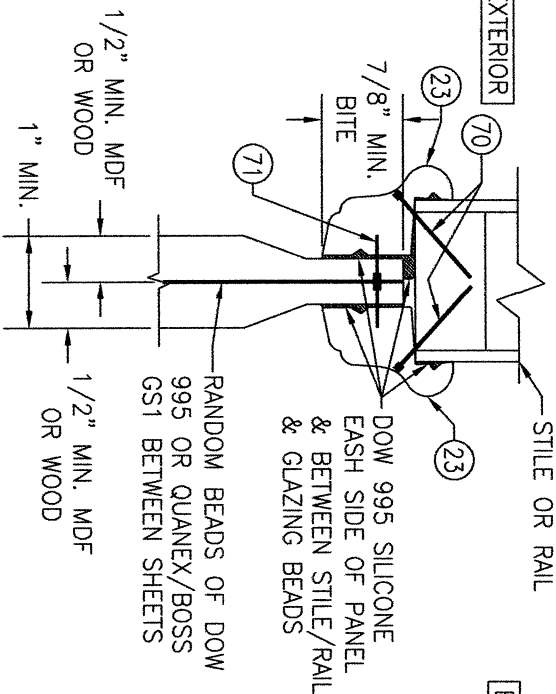


TYPICAL GLAZING DETAIL 4
(1/2" FLAT PANEL WITH RECESSED
MOLDING)

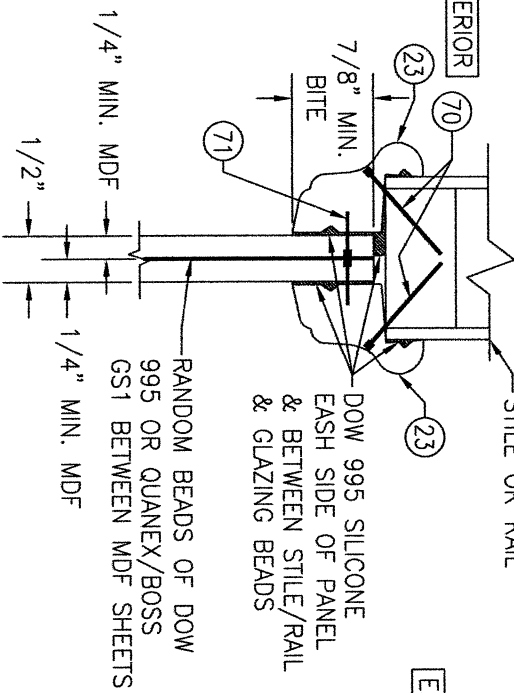
NOTE: EXPOSED SURFACE AREA OF 1/2"
FLAT PANEL BETWEEN STILES AND RAILS
MAY NOT EXCEED 600 SQ. INCHES.



TYPICAL GLAZING DETAIL 5
(RAISED PANEL WITH RECESSED MOLDING)

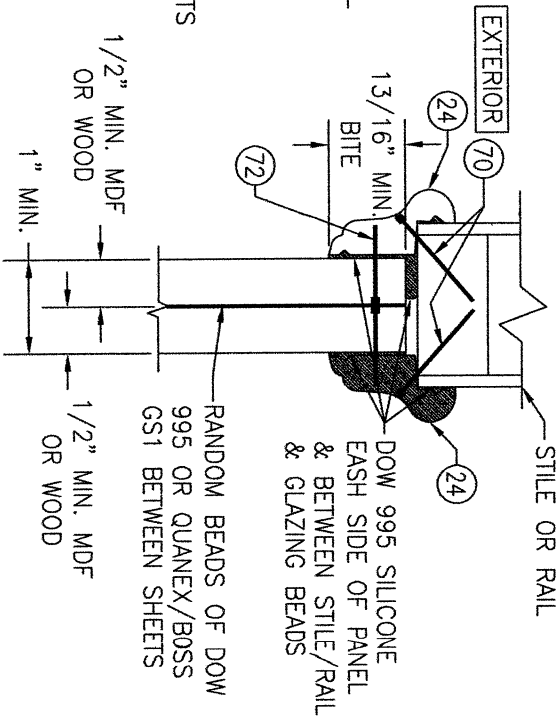


TYPICAL GLAZING DETAIL 6
(RAISED PANEL WITH APPLIED MOLDING)

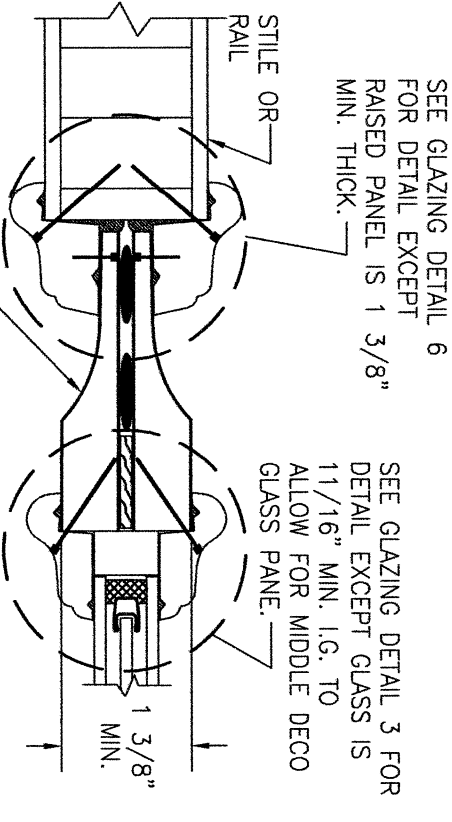


TYPICAL GLAZING DETAIL 7
(1/2" FLAT PANEL WITH APPLIED MOLDING)

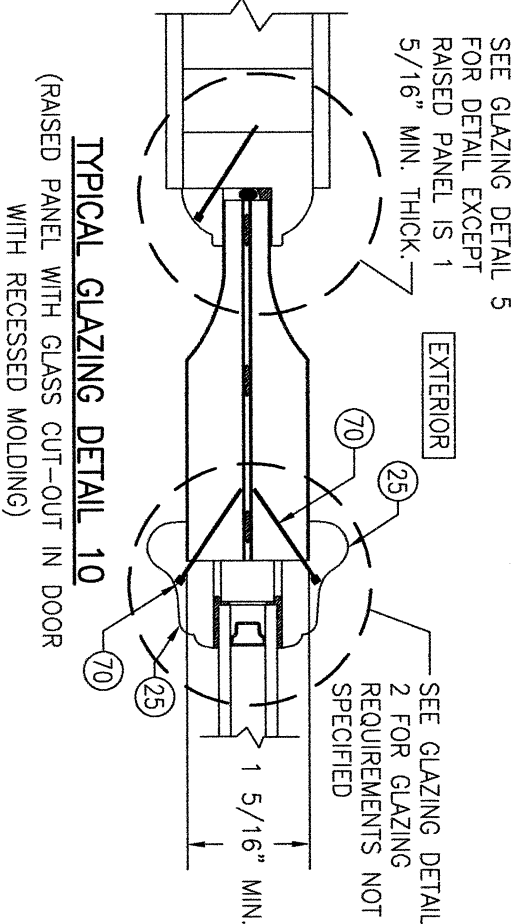
NOTE: EXPOSED SURFACE AREA OF 1/2"
FLAT PANEL BETWEEN STILES AND RAILS
MAY NOT EXCEED 600 SQ. INCHES.



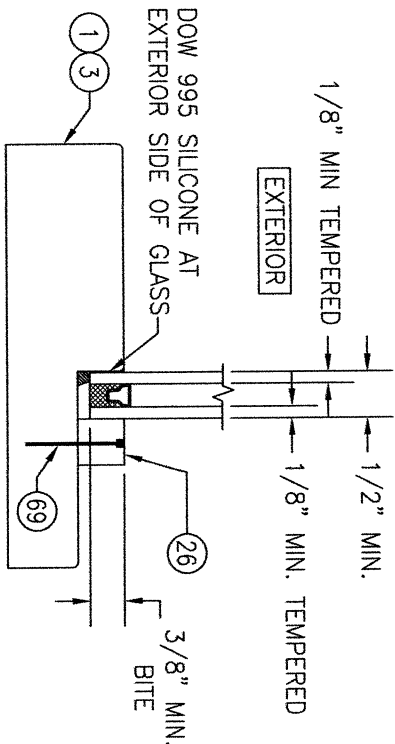
TYPICAL GLAZING DETAIL 8
(1" FLAT PANEL WITH APPLIED MOLDING)



TYPICAL GLAZING DETAIL 9
(RAISED PANEL WITH GLASS CUT-OUT IN DOOR
WITH APPLIED MOLDING)



TYPICAL GLAZING DETAIL 10
(RAISED PANEL WITH GLASS CUT-OUT IN DOOR
WITH RECESSED MOLDING)



TYPICAL GLAZING DETAIL 11
(DIRECT GLAZE TRANSOM)

NO.	REVISION	DESCRIPTION	BY	DATE

DRAWN BY: W.M.S.	CHECKED BY: W.M.S.
PLOT: 1-2	DATE: 05/12/15

DRAWING TITLE
8 FT. NON-IMPACT IN-SWING WOOD DOORS

CONSULTANTS
**W. W. SCHAEFER ENGINEERING
& CONSULTING, P.A.**
26376 NADIR ROAD; UNIT 309
PUNTA GORDA, FL 33983
PHONE: 561-744-3424

MANUFACTURER
SIGNATURE DOOR INC.
401 PRIORITY STREET
ALTOONA, PA 16602
814-949-2770

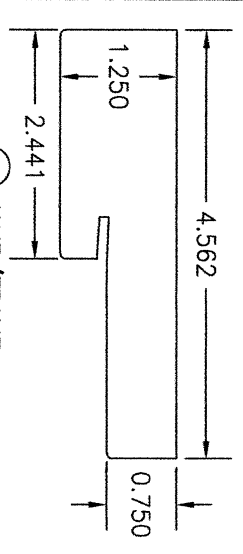
CERTIFICATION

WARREN W. SCHAEFER, P.E.
P.E. NO. 44135

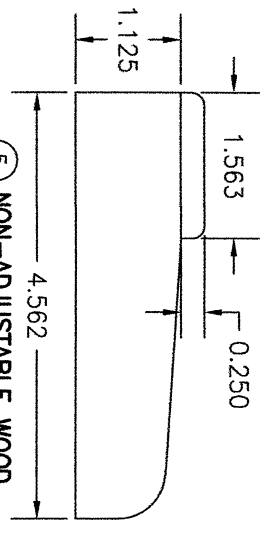
DRAWING NO. 1898

REV. C

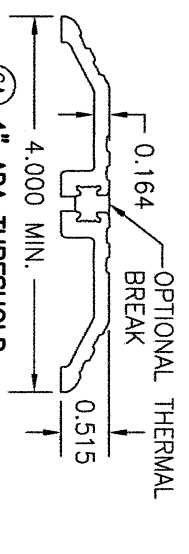
SHEET NO. 15 OF 18



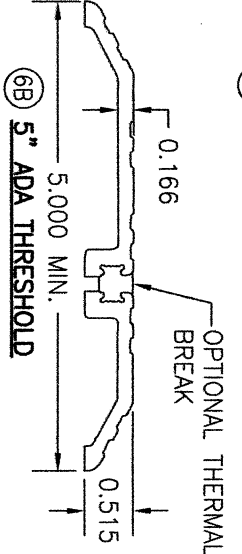
1 JAMB/FRAME
(OPERABLE DOOR)



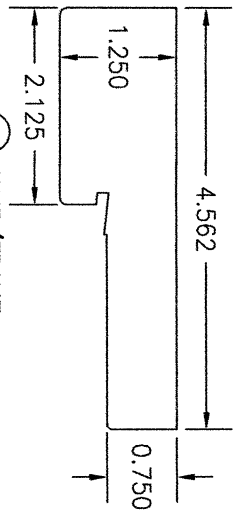
5 NON-ADJUSTABLE WOOD
THRESHOLD



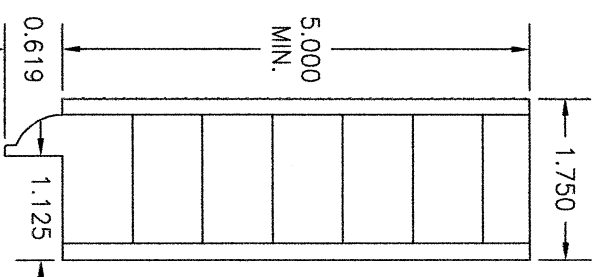
6A 4" ADA THRESHOLD



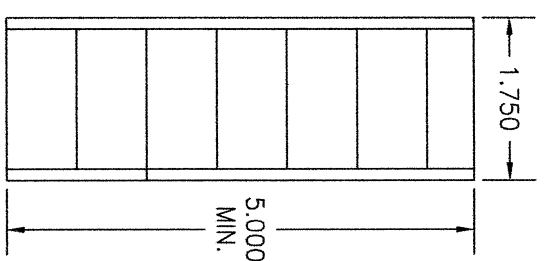
6B 5" ADA THRESHOLD



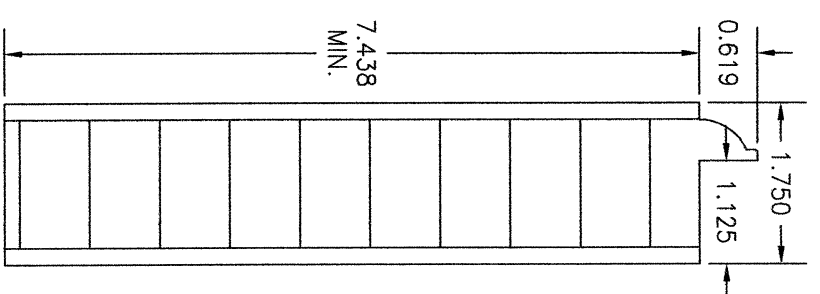
2 JAMB/FRAME
(FIXED PANEL DOOR &
SASH SET TRANSOM)



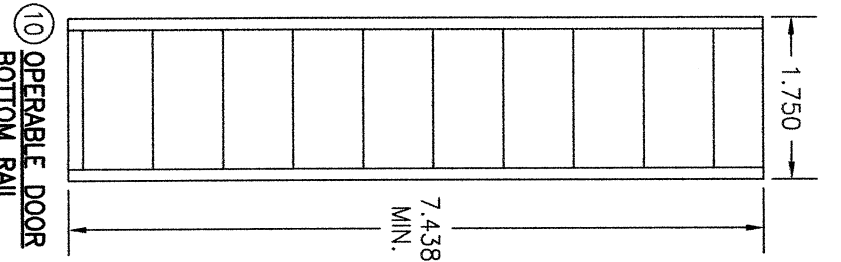
7 TOP RAIL AND 5"
STILES WITH RECESSED
MOLDING



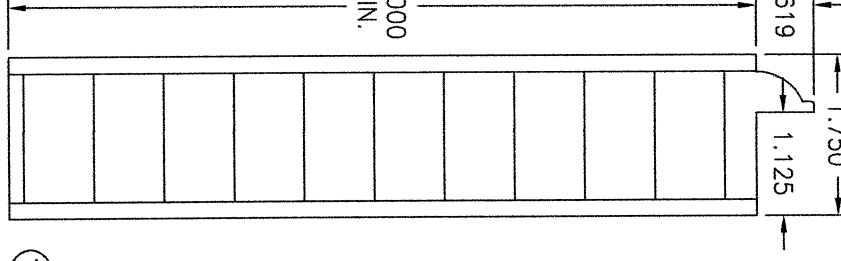
8 TOP RAIL AND 5"
STILES FOR
APPLIED MOLDING



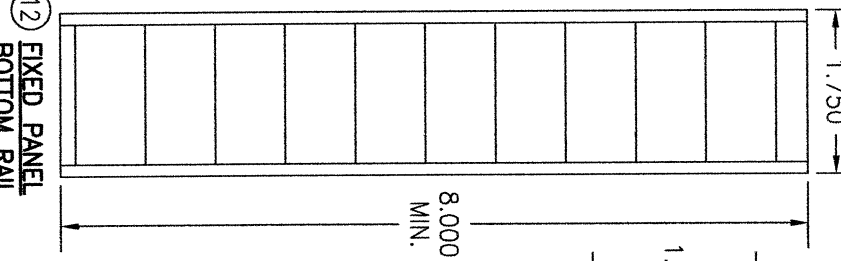
9 OPERABLE DOOR
BOTTOM RAIL WITH
RECESSED MOLDING



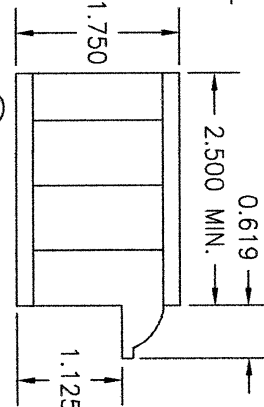
10 OPERABLE DOOR
BOTTOM RAIL
FOR APPLIED
MOLDING



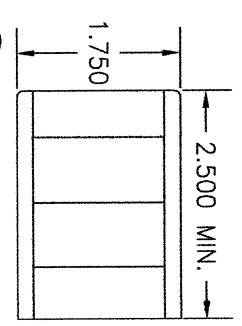
11 FIXED PANEL
BOTTOM RAIL
WITH RECESSED
MOLDING



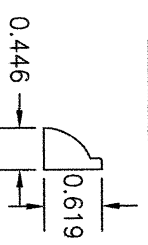
12 FIXED PANEL
BOTTOM RAIL
FOR APPLIED
MOLDING



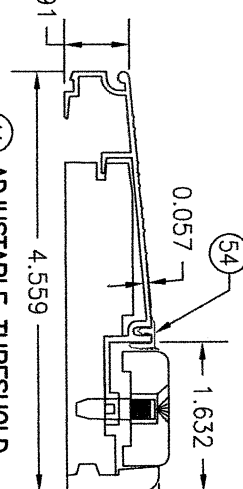
13 2.5" STILE WITH
RECESSED MOLDING



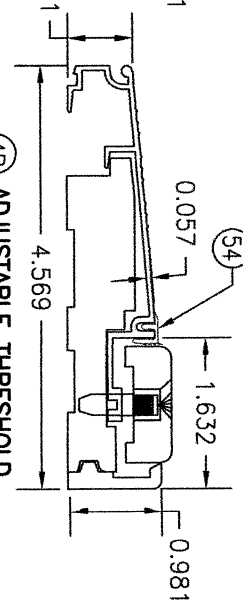
14 2.5" STILE FOR APPLIED
MOLDING



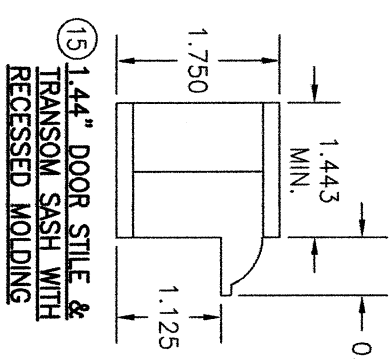
22 RECESSED
MOLDING
GLAZING BEAD



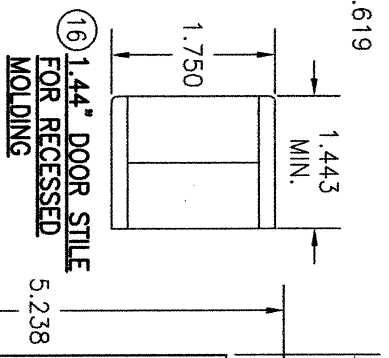
4A ADJUSTABLE THRESHOLD



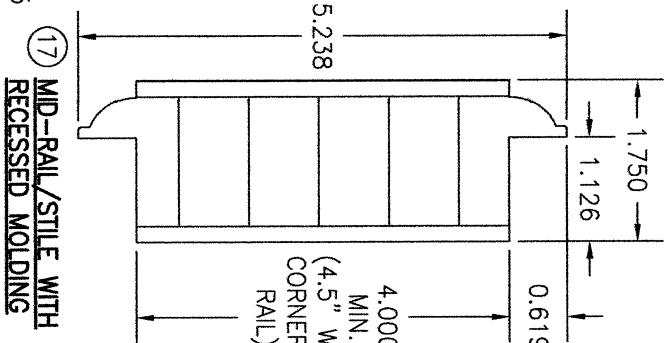
4B ADJUSTABLE THRESHOLD



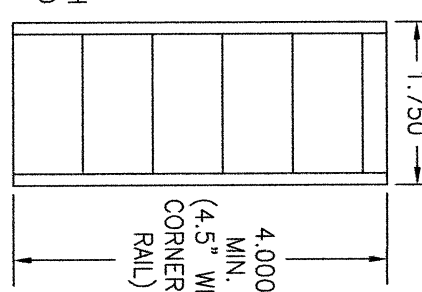
15 1.44" DOOR STILE &
TRANSOM SASH WITH
RECESSED MOLDING



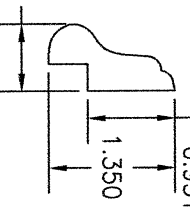
16 1.44" DOOR STILE
FOR RECESSED
MOLDING



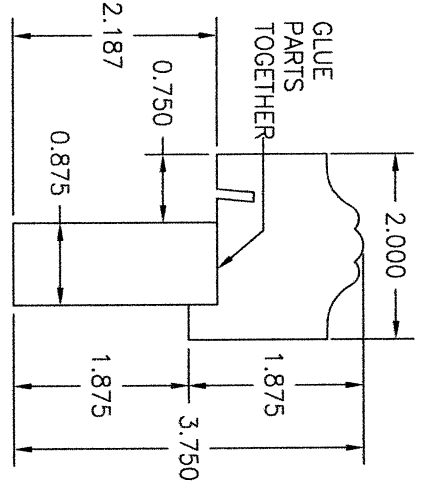
17 MID-RAIL/STILE WITH
RECESSED MOLDING



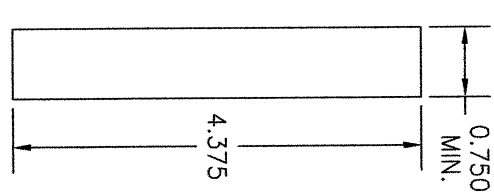
18 MID-RAIL/STILE FOR
APPLIED MOLDING



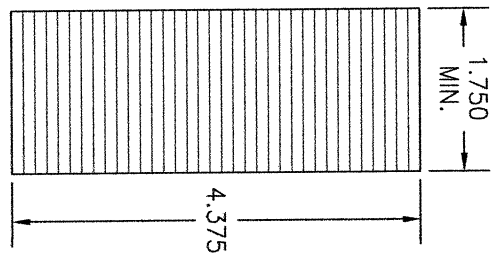
25 APPLIED MOLDING
GLAZING BEAD FOR
PANEL CUT-OUT



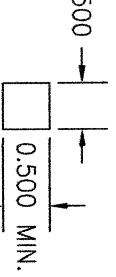
19 ASTRIGAL



20 3/4" MULLION
FILLER



21 1 3/4" MULLION
FILLER



26 DIRECT SET
TRANSOM GLAZING
BEAD

NO.	REVISION	DESCRIPTION	BY	DATE

DRAWING TITLE
8 FT. NON-IMPACT IN-SWING WOOD DOORS

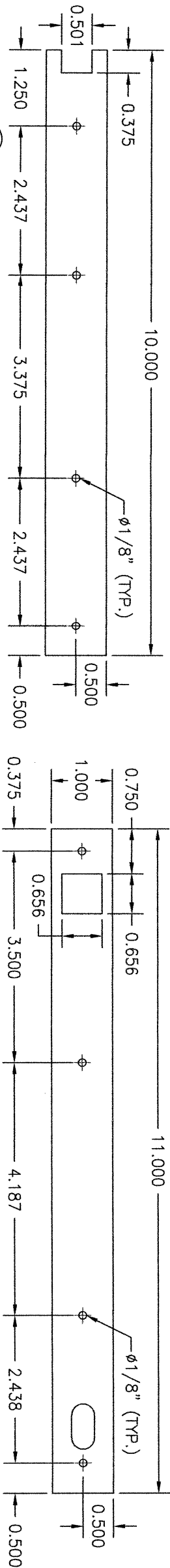
CONSULTANTS
W. W. SCHAEFER ENGINEERING & CONSULTING, P.A.
26376 MADIR ROAD, UNIT 309
PUNTA GORDA, FL 33983
PHONE: 561-744-3424

MANUFACTURER
SIGNATURE DOOR INC.
401 PRIORITY STREET
ALTOONA, PA 16602
814-949-2770

CERTIFICATION
WARREN W. SCHAEFER, P.E.
P.E. NO. 44135

DRAWING NO.
1898

SHEET NO.
16 OF 18

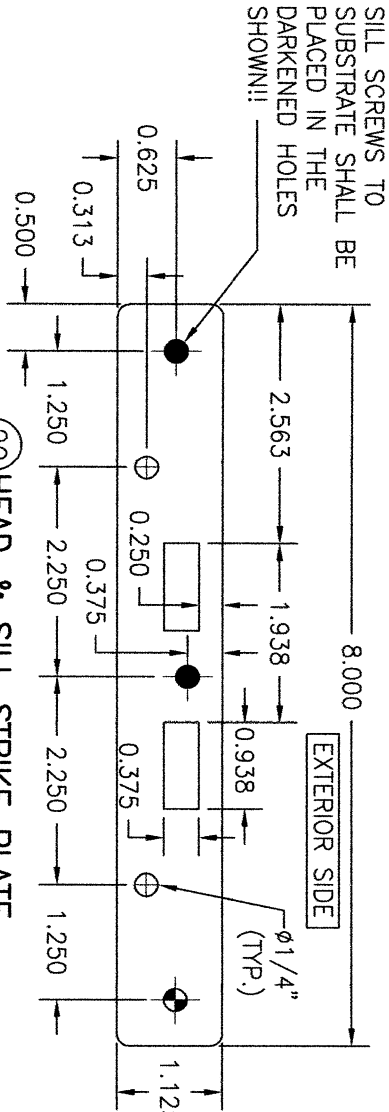


27 ACTIVE PANEL STILE REINFORCEMENT

THICKNESS = 1/8"

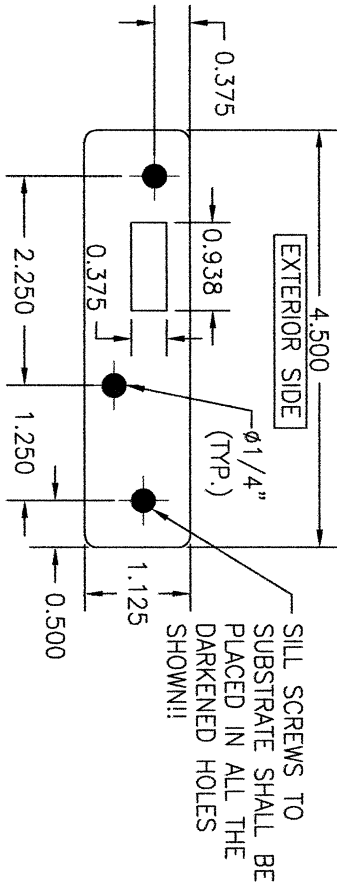
28 INACTIVE PANEL STILE REINFORCEMENT

THICKNESS = 1/8"



29 HEAD & SILL STRIKE PLATE

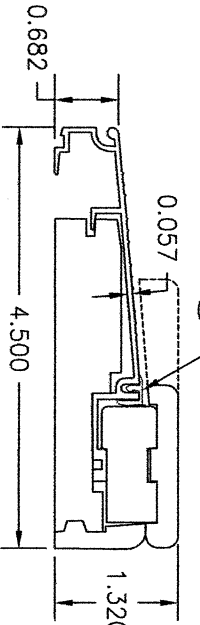
THICKNESS = 1/8"



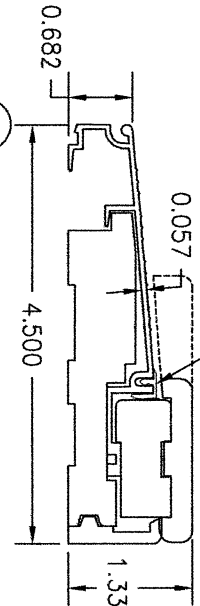
30 HEAD & SILL STRIKE PLATE

THICKNESS = 1/8"

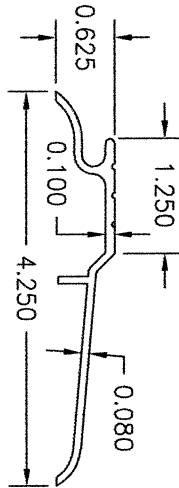
USED WITH 2-POINT ONLY INACTIVE PANEL LOCK SYSTEMS



33A NON-ADJUSTABLE THRESHOLD

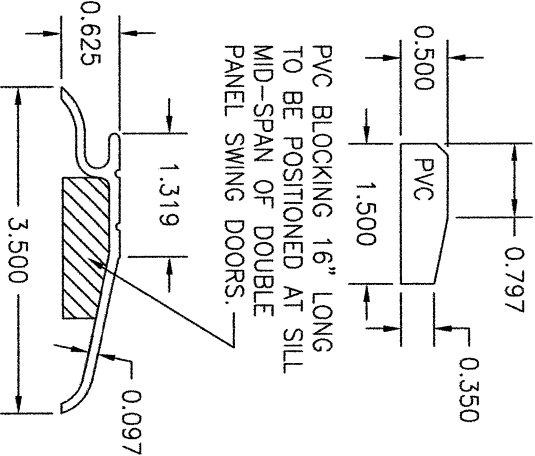


33B NON-ADJUSTABLE THRESHOLD



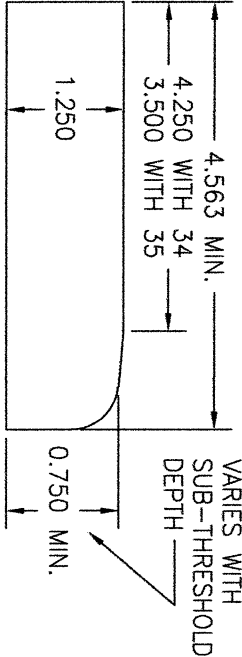
34 OPTIONAL THRESHOLD

APPLICABLE ONLY WITH SUB-THRESHOLD ITEM NO. 36

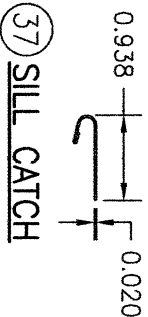


35 OPTIONAL THRESHOLD

APPLICABLE ONLY WITH SUB-THRESHOLD ITEM NO. 33



36 OPTIONAL WOOD SUB-THRESHOLD



37 SILL CATCH

NO.	REVISION	DESCRIPTION	BY	DATE

DRAWING TITLE 8 FT. NON-IMPACT IN-SWING WOOD DOORS	CONSULTANTS W. W. SCHAEFER ENGINEERING & CONSULTING, P.A. 26376 NADIR ROAD; UNIT 309 PUNTA GORDA, FL 33983 PHONE: 561-744-3424	MANUFACTURER SIGNATURE DOOR INC. 401 PRIORITY STREET ALTOONA, PA 16602 814-949-2770
--	---	--

CERTIFICATION WARREN W. SCHAEFER, P.E. P.E. NO. 44135	DRAWING NO. 1898 REV. C	SHEET NO. 17 OF 18
---	--	-------------------------------------

