

**GENERAL NOTES:**

1. THIS PRODUCT HAS BEEN TESTED, ANALYZED & APPROVED FOR DESIGN PRESSURES NOT TO EXCEED THOSE SHOWN IN THE "ALLOWABLE DESIGN PRESSURE TABLE(S)".
2. OPENINGS, BUCKING & BUCKING FASTENERS MUST BE PROPERLY DESIGNED & INSTALLED TO TRANSFER WIND LOADS TO THE STRUCTURE.
3. ALL HARDWARE & FASTENERS SHALL BE IN ACCORDANCE WITH THESE DRAWINGS & SHALL NOT VARY UNLESS SPECIFICALLY MENTIONED ON THE DRAWINGS. SPECIFIED ANCHOR EMBED TO BASE MATERIAL SHALL BE BEYOND WALL FINISH OR STUCCO.
4. THIS PRODUCT HAS BEEN DESIGNED IN ACCORDANCE WITH AND MEETS THE REQUIREMENTS OF THE FLORIDA BUILDING CODE (FBC) FOR NON-HIGH VELOCITY HURRICANE ZONES (NON-HHZ).
5. THIS PRODUCT IS NON-IMPACT RATED & MUST BE SHUTTERED WITH A FLORIDA CODE APPROVED SHUTTER WHERE REQUIRED BY CODE.
6. ALL ANCHORS SECURING PRODUCT FRAMES TO PRESSURE TREATED BUCKS OR WOOD FRAMING SHALL BE CAPABLE OF RESISTING CORROSION CAUSED BY THE PRESSURE TREATING CHEMICALS IN THE WOOD.
7. DETERMINE THE POSITIVE & NEGATIVE DESIGN LOADS TO USE WHEN REFERENCING THESE DOCUMENTS IN ACCORDANCE WITH THE GOVERNING CODE AND GOVERNING WIND VELOCITY. FOR WIND LOAD CALCULATIONS IN ACCORDANCE WITH THE FLORIDA BUILDING CODE, A DIRECTIONALITY FACTOR OF  $K_d = 0.85$  MAY BE APPLIED PER THE ASCE-7 STANDARD.
8. MATERIALS, INCLUDING BUT NOT LIMITED TO STEEL SCREWS, THAT COME INTO CONTACT WITH OTHER DISSIMILAR MATERIALS SHALL MEET THE REQUIREMENTS OF FLORIDA BUILDING CODE.
9. TO THE BEST OF OUR KNOWLEDGE, THE PRODUCT SHOWN HEREIN IS QUALITY ASSURED BY A FLORIDA STATE APPROVED CERTIFICATION/ODA ENTITY & SHALL BE LABELED IN ACCORDANCE WITH THE FBC AND THE FLORIDA DEPARTMENT OF BUSINESS & PROFESSIONAL REGULATION SPECIFICATIONS. THESE DRAWINGS SHOW ALL APPLICABLE ELEVATION, COMBINATION, INSTALLATION & COMPARATIVE ANALYSIS CONDITIONS AS DETERMINED THROUGH TESTING & ENGINEERING RATIONAL ANALYSIS. PRODUCT ASSEMBLY SHALL BE IN ACCORDANCE WITH THESE DRAWINGS. THE MANUFACTURER'S QUALITY ASSURANCE SPECIFICATIONS & TESTING REPORTS.
10. CERTIFICATION OF THIS PRODUCT SHALL BE CONSIDERED VOID IF IT IS INSTALLED WITHOUT A BUILDING PERMIT FROM THE APPLICABLE LOCAL BUILDING DEPARTMENT OR IF IT IS INSTALLED BY ANYONE OTHER THAN A LICENSED CONTRACTOR EXPERIENCED WITH INSTALLATIONS OF THIS TYPE OF PRODUCT.
11. ALL WOOD MEMBERS OF THIS PRODUCT THAT MAY POSSIBLY COME INTO CONTACT WITH MASONRY OR CONCRETE SUBSTRATES, ARE SUBJECT TO MOISTURE &/OR ARE SUBJECT TO THE OUTSIDE ENVIRONMENT SHALL BE OF AN APPROVED DURABLE SPECIES OR BE TREATED IN AN APPROVED METHOD WITH AN APPROVED PRESERVATIVE PER FBC REQUIREMENTS.
12. CONDITIONS OTHER THAN THOSE SHOWN HERE-IN SHALL BE SUBJECT TO JOB SPECIFIC ENGINEER'S REVIEW AND CERTIFICATION (EXAMPLE: SMALLER DOORS TO HIGHER ALLOWABLE DESIGN PRESSURE THAN WHAT IS STATED).

NOTE: THESE DOOR UNITS ARE NOT APPROVED FOR USE WHERE WATER INFILTRATION RESISTANCE IS REQUIRED BY THE DOOR UNLESS THE UNITS ARE INSTALLED IN NON-HABITABLE AREAS WHERE THE UNIT & THE AREA ARE DESIGNED TO ACCEPT WATER INFILTRATION OR THE UNITS ARE INSTALLED AT LOCATIONS PROTECTED BY A CANOPY OR OVERHANG WHERE-BY THE OVERHANG(OH) RATIO IS EQUAL TO OR MORE THAN 1.0 PER FBC.

**FRAME ANCHOR REQUIREMENTS TABLE**

OPENING TYPE (SUBSTRATE)	FRAME TO OPENING FASTENER TYPE	MINIMUM EMBED	MINIMUM EDGE DIST.
MIN. 2X4 WOOD FRAME OR BUCK (MIN. GR. 3 & G=0.55)	NO. 10 SMS OR WOOD SCREW	1 1/4"	3/4"
MIN. 18 GA. 33 KSI METAL STUD	NO. 10 GR. 5 SELF TAP/DRILL SCREW	FULL	1/2"
MIN. 1/8" THK A36 STEEL	NO. 10 GR. 5 SELF TAP/DRILL SCREW	FULL	1/2"
MIN. 1/8" THK 6063-T5 ALUM.	NO. 10 GR. 5 SELF TAP/DRILL SCREW	FULL	1/2"
MIN. C-90 CMU	(1) 1/4" CONCRETE SCREW	1 1/4"	2"
2500 PSI CONCRETE	(1) 1/4" CONCRETE SCREW	1 1/2"	2"
<b>HINGE &amp; STRIKE SCREWS</b>			
MIN. 2X4 WOOD FRAME OR BUCK (MIN. GR. 3 & G=0.55)	NO. 10 SMS OR WOOD SCREW	1 1/4"	3/4"
MIN. 18 GA. 33 KSI METAL STUD	NO. 10 GR. 5 SELF TAP/DRILL SCREW	FULL	1/2"
MIN. 1/8" THK A36 STEEL	NO. 10 GR. 5 SELF TAP/DRILL SCREW	FULL	1/2"
MIN. 1/8" THK 6063-T5 ALUM.	NO. 10 GR. 5 SELF TAP/DRILL SCREW	FULL	1/2"
MIN. C-90 CMU	(1) 3/16" CONCRETE SCREW	1 1/4"	2"
2500 PSI CONCRETE	(1) 3/16" CONCRETE SCREW	1 1/2"	2"

**LOCK SYSTEM DESCRIPTIONS**

LOCK SYSTEM	DESCRIPTION	ACTIVE PANEL	INACTIVE PANEL
1	LATCH & DEAD BOLT ONLY	TOP & BOTTOM SHOOT BOLTS	TOP & BOTTOM SHOOT BOLTS
2	3-POINT MULTI-POINT LOCK	TOP & BOTTOM SHOOT BOLTS	TOP & BOTTOM SHOOT BOLTS
3	5-POINT MULTI-POINT LOCK	TOP & BOTTOM SHOOT BOLTS	TOP & BOTTOM SHOOT BOLTS
4	LATCH & TRU-LOCK MULTI-POINT PLUS SURFACE BOLTS (1)	TOP & BOTTOM SHOOT BOLTS	TOP & BOTTOM SHOOT BOLTS

(1) SURFACE BOLTS IN LOCK SYSTEM 4 ARE NOT REQUIRED WITH SINGLE PANEL DOORS.

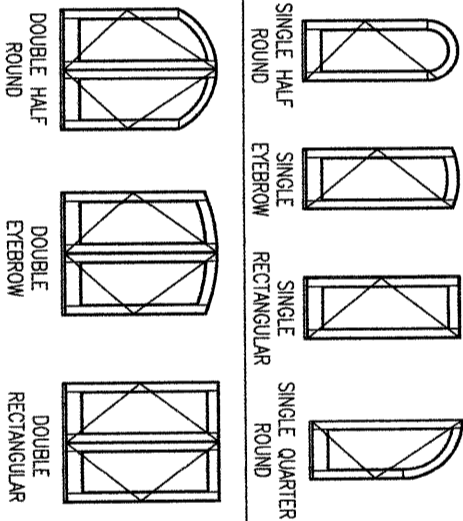
EVALUATION OF THIS PRODUCT IS BASED ON APPLICABLE STANDARDS AND/OR INFORMATION & RESULTS FROM APPLICABLE TEST REPORTS. THE FLORIDA BUILDING CODE VERSION CONSIDERED WITH THIS EVALUATION WAS THAT IN FORCE AT THE TIME OF THE EVALUATION. IN THE EVENT OF CODE VERSION CHANGES/UPDATES OR IN THE EVENT THAT NEW OR ADDITIONAL TESTING IS COMPLETED ON THIS PRODUCT, PRIOR TO STATING CODE COMPLIANCE WITH THE STATE, THE MANUFACTURER SHALL CONFIRM WITH THE EVALUATION ENGINEER OF RECORD THAT EVERYTHING SPECIFIED HERE-IN IS CURRENT WITH ALL CURRENT TESTING, CODES AND APPLICABLE STANDARDS.

**HINGE REQUIREMENTS**

DOOR HEIGHT	# HINGES REQ'D
6'-8"	3
TALLER THAN 6'-8"	(1) 4

(1) 3 HINGES REQUIRED WITH ALL HEIGHTS OF DOUBLE HALF ROUND, SINGLE HALF-ROUND & SINGLE QUARTER ROUND DOORS

**SHAPES CONSIDERED AS PART OF THIS APPROVAL**



NOTE: EYEBROW TOP DOORS SHALL BE INSTALLED THE SAME AS RECTANGULAR.

**DOOR CORNER CONSTRUCTION:**

HEAD FRAME CORNERS: OPTION 1: SIDE JAMB MEMBER IS COPED. HEAD FRAME MEMBER IS SQUARE CUT, BUTTED TO THE SIDE JAMB MEMBER, FULLY BONDED/SEALED WITH DOW 995 OR BOSS/QUANEX G51 SEALANT AND JOINED WITH THREE(3) 1/2" X 2" LONG 16 GAGE CROWN STAPLES. OPTION 2: JAMBS END IS COPED, BUTTED TO THE HEAD, FULLY BONDED/SEALED WITH DOW 995 OR BOSS/QUANEX G51 SEALANT AND JOINED WITH 3 NO. 10 X 3" SCREWS.

SILL CORNERS (STANDARD BUMPER SILL): OPTION 1: SIDE JAMB MEMBER IS COPED. SILL MEMBER IS SQUARE CUT, BUTTED TO THE SIDE JAMB MEMBER, FULLY BONDED/SEALED WITH DOW 995 OR BOSS/QUANEX G51 SEALANT AND JOINED WITH TWO(2) NO. 10 X 2" LONG WOOD OR SMS SCREWS. OPTION 2: JAMB END IS COPED, BUTTED TO THE SILL, FULLY BONDED/SEALED WITH DOW 995 OR BOSS/QUANEX G51 SEALANT AND JOINED WITH 3 NO. 10 X 3" SCREWS.

SILL CORNERS (ADA SILL): JAMB IS CUT TO FIT, BUTTED TO SILL, FULLY BONDED/SEALED WITH DOW 995 OR BOSS/QUANEX G51 SEALANT AND JOINED WITH 3 NO. 10 X 2" SCREWS.

MULLION JAMBS TO CONTINUOUS HEAD AND SILL: EACH JAMBS END IS COPED, BUTTED TO THE HEAD/SILL, FULLY BONDED/SEALED WITH DOW 995 OR BOSS/QUANEX G51 SEALANT AND JOINED WITH 3 NO. 10 X 3" SCREWS.

SEAM AT FULL RADIUS JAMB: SIDE AND HEAD FRAME MEMBERS ARE EQUALLY COPED & LAPPED 5", MATED TOGETHER, FULLY GLUED WITH KORLOCK GT-42-300A OR WATERPROOF'S TITEBOND III GLUE AND JOINED WITH 8 NO. 6 X 1 1/8" AND 8 NO. 6 X 5/8" SMS SCREWS.

TOP RAIL TO SILL: RAIL IS SQUARE CUT, BUTTED TO THE SILL, JOINED TO THE SILL WITH TWO(2) 5/8" X 3" DOWELS AND FULLY GLUED WITH KORLOCK GT-42-300A OR WATERPROOF'S TITEBOND III GLUE (DOWELS AND MEETING SURFACES).

STANDARD BOTTOM RAIL TO SILL: RAIL IS SQUARE CUT, BUTTED TO THE SILL, JOINED TO THE SILL WITH THREE(3) 5/8" X 3" DOWELS AND FULLY GLUED WITH KORLOCK GT-42-300A OR WATERPROOF'S TITEBOND III GLUE (DOWELS AND MEETING SURFACES).

BOTTOM RAIL TO SILL WHEN TOP RAIL IS FULL RADIUS: EACH THE RAIL END AND SILL EDGE ARE GROOVED TO ACCEPT A 1/2" THICK X 3 3/8" WIDE X 7 7/16" LONG HARDWOOD KEY. ONCE JOINED VIA THE KEY, ALL SURFACES ARE GLUED WITH KORLOCK GT-42-300A OR WATERPROOF'S TITEBOND III GLUE.

MID-RAIL TO SILL: RAIL IS SQUARE CUT, BUTTED TO THE SILL, JOINED TO THE SILL WITH TWO(2) 5/8" X 3" DOWELS AND FULLY GLUED WITH KORLOCK GT-42-300A OR WATERPROOF'S TITEBOND III GLUE (DOWELS AND MEETING SURFACES).

MID-STYLE TO RAIL: STYLE IS SQUARE CUT, BUTTED TO THE RAIL, JOINED TO THE RAIL WITH TWO(2) 5/8" X 3" DOWELS AND FULLY GLUED WITH KORLOCK GT-42-300A OR WATERPROOF'S TITEBOND III GLUE (DOWELS AND MEETING SURFACES).

FULL RADIUS STYLE/RAIL JOINERY AT RADIUS END: RAIL & STYLE ARE VERTICALLY CUT, BUTTED TOGETHER, JOINED WITH TWO(2) 5/8" X 3" DOWELS AND FULLY GLUED WITH KORLOCK GT-42-300A OR WATERPROOF'S TITEBOND III GLUE (DOWELS AND MEETING SURFACES).

**TRANSOM CORNER CONSTRUCTION:**

DIRECT SET AND SASH SET TRANSOM FRAMES: SAME AS DOOR "HEAD FRAME CORNERS" STATED ABOVE.

SASH SET SASH CORNERS: RAILS ARE SQUARE CUT, BUTTED TO THE STILES, JOINED TO THE STILE WITH ONE(1) 5/8" X 3" DOWEL AND FULLY GLUED WITH KORLOCK GT-42-300A OR WATERPROOF'S TITEBOND III GLUE (DOWEL AND MEETING SURFACES).

THESE DRAWINGS ARE APPLICABLE ONLY TO THE PRODUCT SPECIFIED. THEY MAY NOT BE USED FOR THE ASSEMBLY AND/OR INSTALLATION OF ANY OTHER PRODUCT NOR MAY THEY BE USED FOR RATIONAL AND/OR LOCAL APPROVAL OF ANY PRODUCT NOT PRODUCED BY THE MANUFACTURER STATED ON THESE DRAWINGS.

NO.	REVISION DESCRIPTION	BY	DATE
A1	TYP0 CORRECTION	W.W.S.	08/04/17
B1	ADDED THRESHOLD OPTIONS	W.W.S.	08/05/20
B2	ADDED WEATHERSEAL OPTION	W.W.S.	08/05/20
C1	UPDATE PER NEW TESTING	W.W.S.	11/27/23

**DRAWING TITLE**  
8 FT. NON-IMPACT OUT-SWING WOOD DOORS

**CONSULTANTS**  
W. W. SCHAEFER ENGINEERING & CONSULTING, P.A.  
26376 NADIR ROAD, UNIT 309  
PUNTA GORDA, FL 33983  
PHONE: 561-744-3424

**MANUFACTURER**  
SIGNATURE DOOR INC.  
401 PRIORITY STREET  
ALTOONA, PA 16602  
814-949-2770

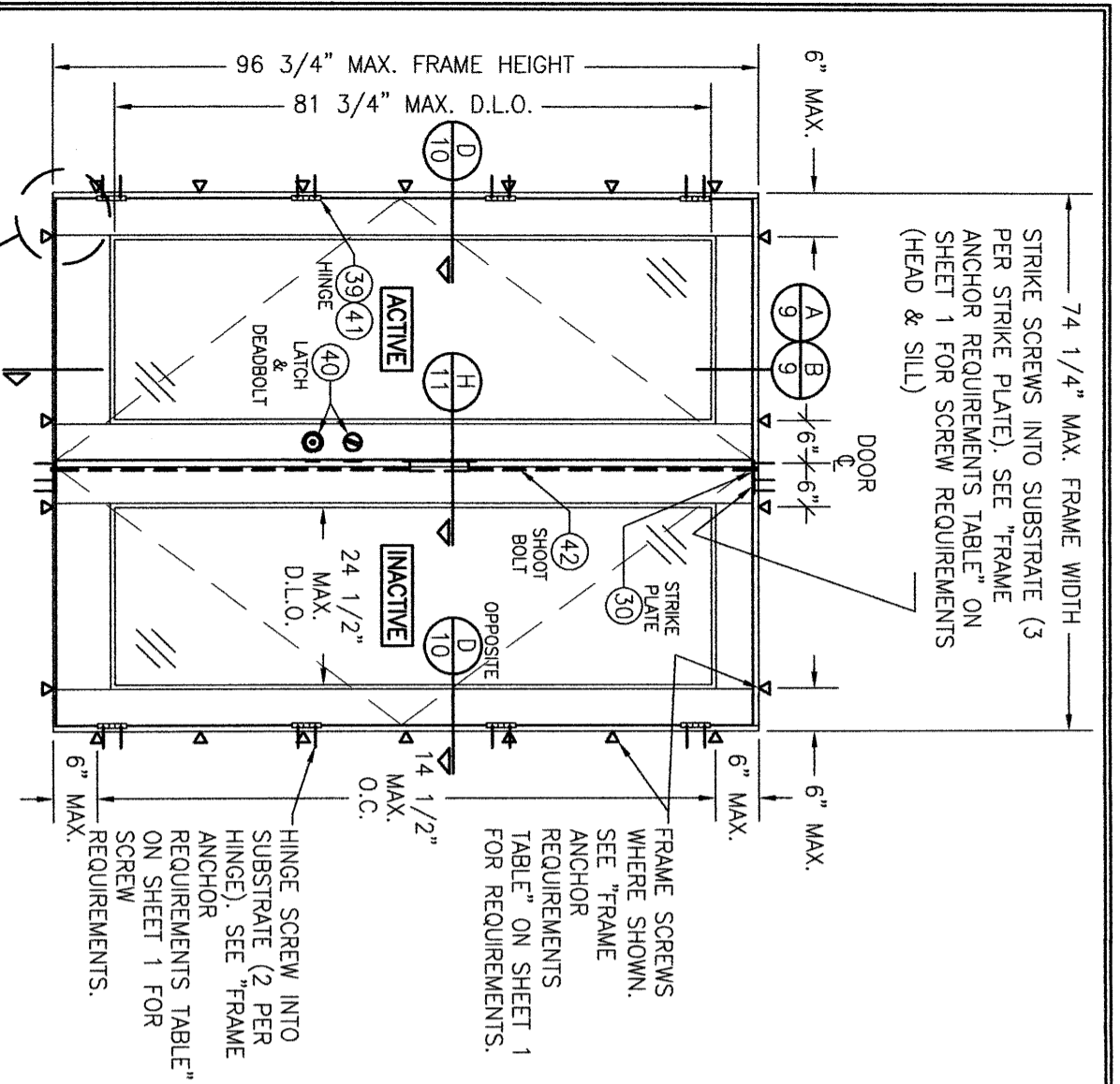
**CERTIFICATION**  
WARREN W. SCHAEFER, P.E.  
NO. 44135

**DRAWING NO.**  
1899

**SHEET NO.**  
1 OF 16

**REV.**  
C

DRWN BT: W.W.S.	CHECKED BT: W.W.S.
PLT: 1-24	DATE: 08/12/15



SEE CORNER CONSTRUCTION DESCRIPTIONS ON SHEET 1

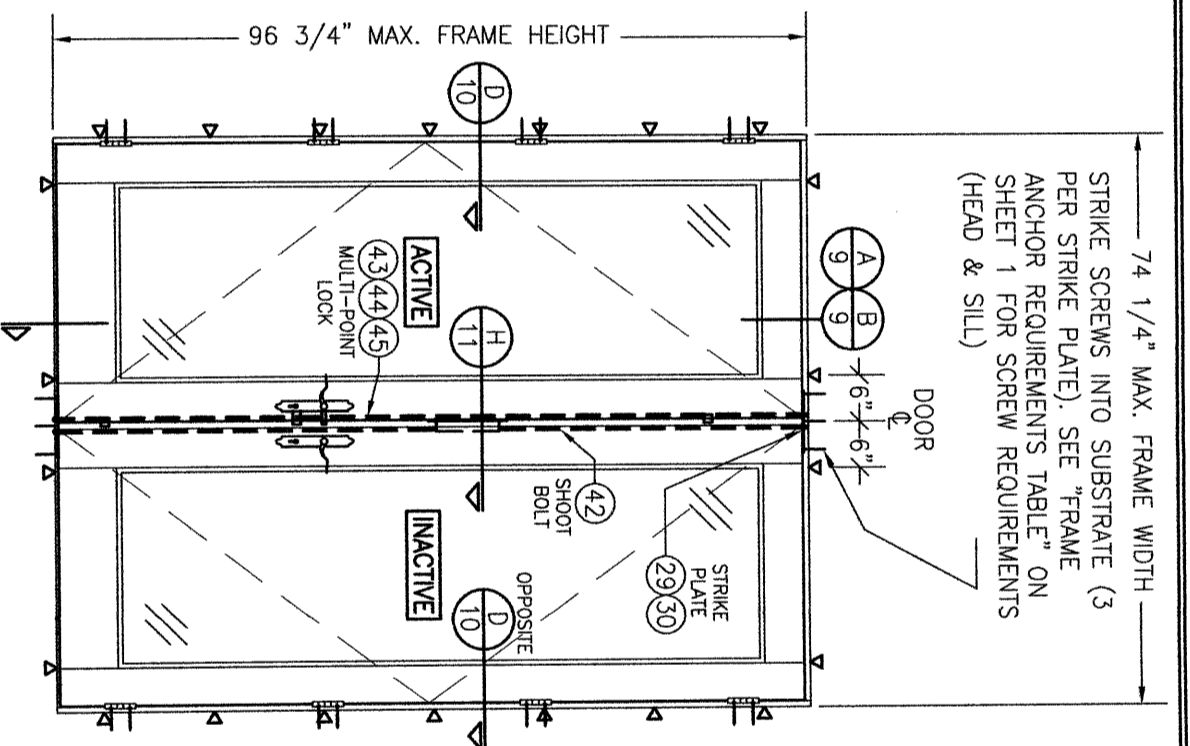
EXTERIOR ELEVATION:  
DOUBLE RECTANGULAR DOOR WITH LOCK SYSTEM 1

SCALE: 1/2" = 1'-0"  
(FOR LOCK SYSTEM DESCRIPTIONS, SEE SHEET 1)

ALLOWABLE DESIGN PRESSURE (1) (DOUBLE RECTANGULAR DOORS)			
LOCK SYSTEM	ALLOWABLE PRESSURE (PSF)		LOCK SYSTEM
	(2) GLAZED	OPAQUE	
1	30	40	40

(1) THIS TABLE ALSO APPLIES TO EYE-BROW TOP DOORS.  
(2) "GLAZED" INCLUDES FULLY AND PARTIALLY GLAZED DOOR PANELS.

D.L.O. NOTE:  
MAX. D.L.O. DIMENSIONS SHOWN APPLY TO DOOR PANELS GLAZED WITH RECESSED MOLDING. WHEN APPLIED MOLDING IS USED, THE MAX. D.L.O. IS REDUCED 3/4".



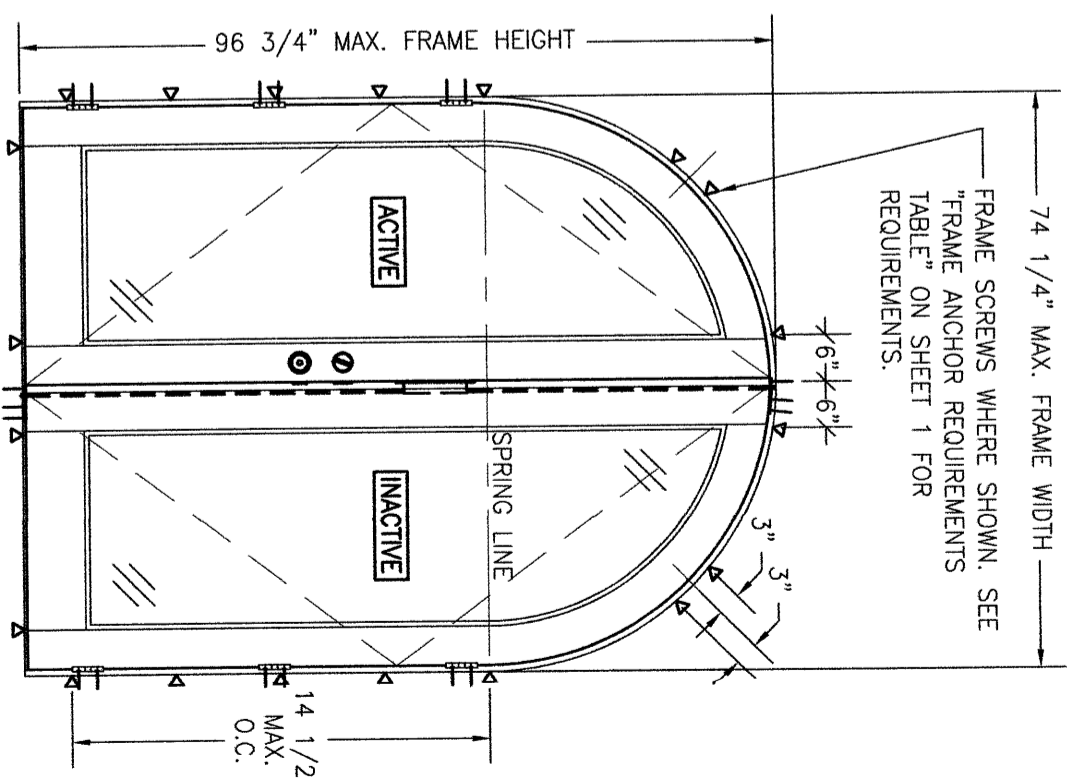
EXTERIOR ELEVATION:  
DOUBLE RECTANGULAR DOOR WITH LOCK SYSTEM 2, 3 OR 4

SCALE: 1/2" = 1'-0"  
(FOR LOCK SYSTEM DESCRIPTIONS, SEE SHEET 1)  
(FOR DETAIL NOT SHOWN, SEE LOCK SYSTEM 1 ELEVATION ON THIS SHEET.)

ALLOWABLE DESIGN PRESSURE (1) (DOUBLE RECTANGULAR DOORS)			
LOCK SYSTEM	ALLOWABLE PRESSURE (PSF)		LOCK SYSTEM
	(2) GLAZED	OPAQUE	
2	35	35	35
3	55	55	55
4	50	50	50

(1) THIS TABLE ALSO APPLIES TO EYE-BROW TOP DOORS.  
(2) "GLAZED" INCLUDES FULLY AND PARTIALLY GLAZED DOOR PANELS.

NOTE: DOORS MAY BE FULLY GLAZED AS SHOWN, PARTIALLY PANELLED OR FULLY PANELLED. SEE SHEET 8 ELEVATIONS FOR PANELLED DOORS.



EXTERIOR ELEVATION:  
DOUBLE HALF-ROUND TOP DOOR

SCALE: 1/2" = 1'-0"  
(FOR DETAIL NOT SHOWN, SEE OTHER 2 ELEVATIONS ON THIS SHEET. NOTE THAT ALL LOCK SYSTEMS APPLY.)

ALLOWABLE DESIGN PRESSURE (DOUBLE HALF-ROUND DOORS)			
LOCK SYSTEM	ALLOWABLE PRESSURE (PSF)		LOCK SYSTEM
	(1) GLAZED	OPAQUE	
1	30	30	30
2	35	35	35
3	50	50	50

(1) "GLAZED" INCLUDES FULLY AND PARTIALLY GLAZED DOOR PANELS.

NO.	REVISION DESCRIPTION	BY	DATE

DRAWING TITLE  
8 FT. NON-IMPACT OUT-SWING WOOD DOORS

CONSULTANTS  
W. W. SCHAEFER ENGINEERING & CONSULTING, P.A.  
26376 NADIR ROAD, UNIT 309  
PUNTA GORDA, FL 33983  
PHONE: 561-744-3424

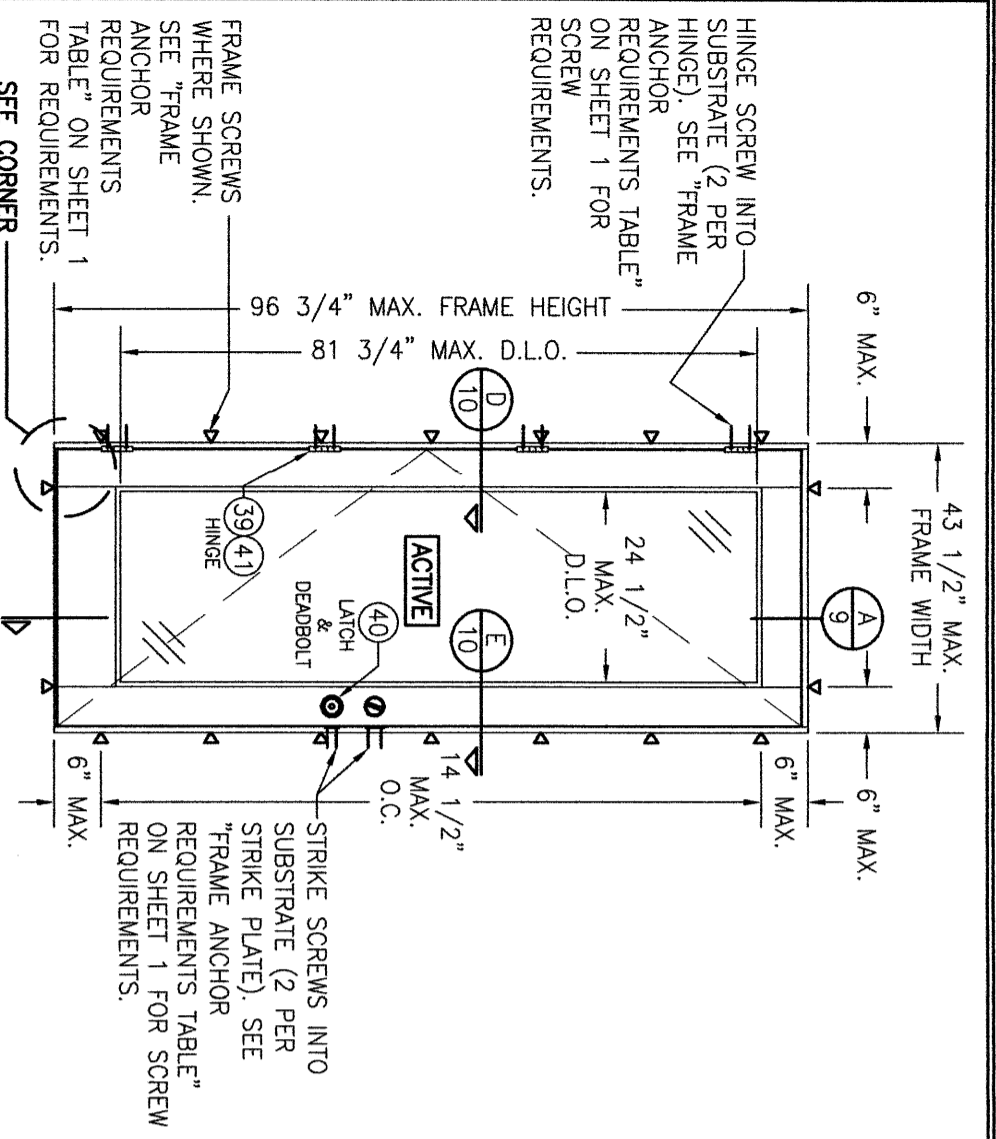
MANUFACTURER  
SIGNATURE DOOR INC.  
401 PRIORITY STREET  
ALTOONA, PA 16602  
814-949-2770

CERTIFICATION

WARREN W. SCHAEFER, P.E.  
P.E. NO. 44135

DRAWING NO. 1899  
SHEET NO. 2 OF 16

DRAWN BY: W.W.S.  
CHECKED BY: W.W.S.  
DATE: 08/12/15



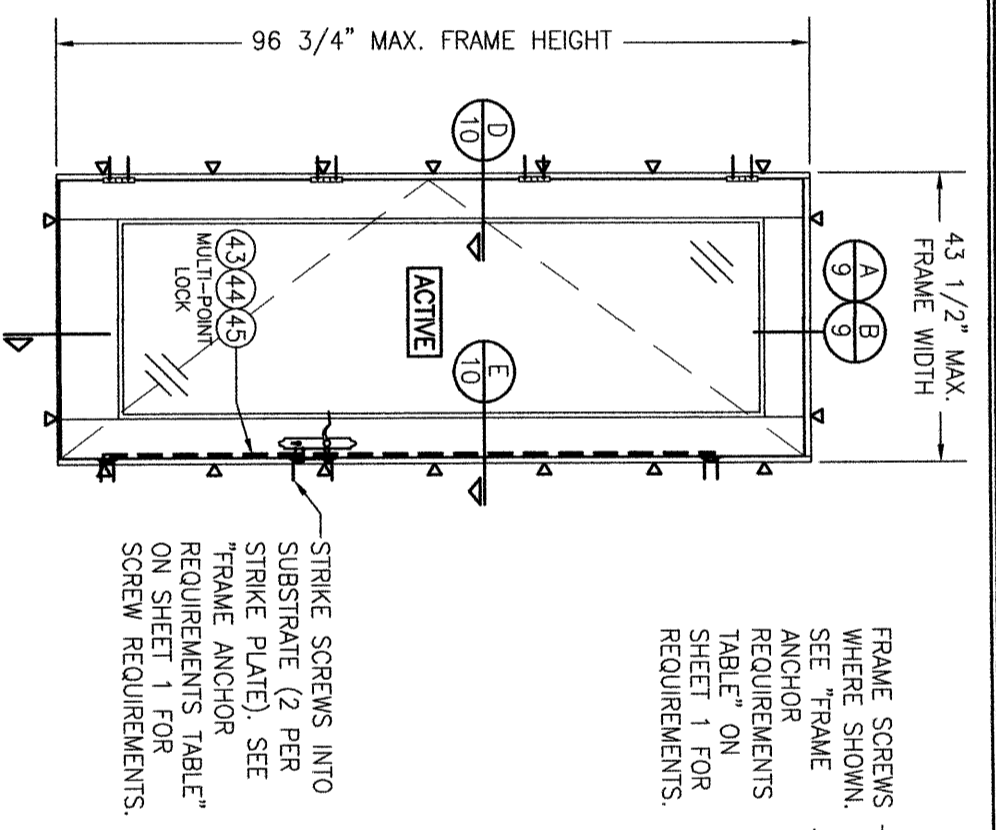
EXTERIOR ELEVATION:  
SINGLE RECTANGULAR DOOR WITH LOCK  
SYSTEM 1

SCALE: 1/2" = 1'-0"  
(FOR LOCK SYSTEM DESCRIPTIONS, SEE SHEET 1)

ALLOWABLE DESIGN PRESSURE (1) (SINGLE RECTANGULAR DOORS)					
LOCK SYSTEM	FRAME WIDTH	ALLOWABLE PRESSURE (PSF)		OPAQUE	
		(2) GLAZED	POS.	NEG.	POS.
1	37 1/2"	35	35	40	40
	43 1/2"	30	30	30	30

(1) THIS TABLE ALSO APPLIES TO EYE-BROW TOP DOORS.  
(2) "GLAZED" INCLUDES FULLY AND PARTIALLY GLAZED DOOR PANELS.

D.L.O. NOTE:  
MAX. D.L.O. DIMENSIONS SHOWN APPLY TO DOOR PANELS GLAZED WITH RECESSED MOLDING. WHEN APPLIED MOLDING IS USED, THE MAX. D.L.O. IS REDUCED 3/4".



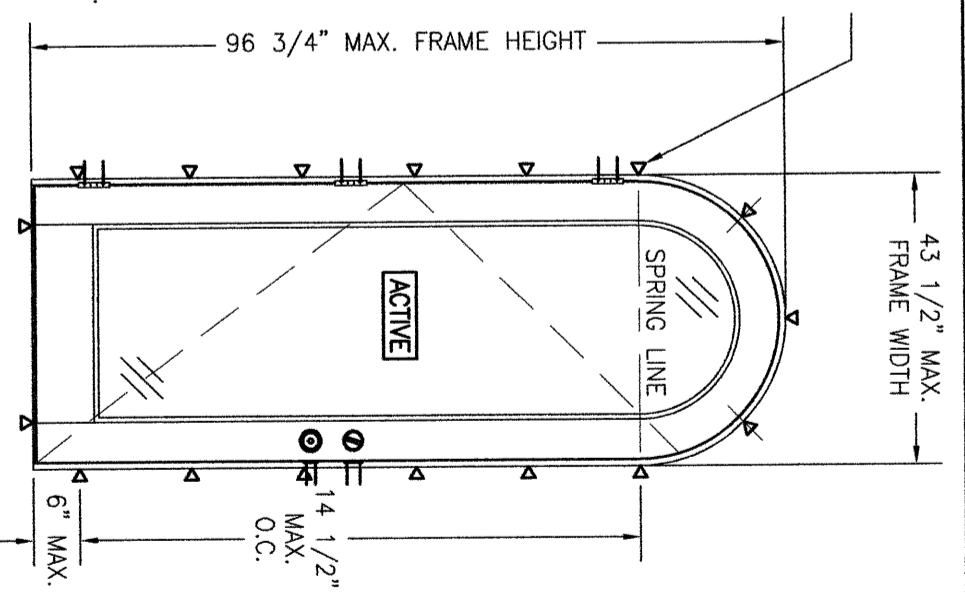
EXTERIOR ELEVATION:  
SINGLE RECTANGULAR DOOR WITH LOCK  
SYSTEM 2, 3 OR 4

SCALE: 1/2" = 1'-0"  
(FOR LOCK SYSTEM DESCRIPTIONS, SEE SHEET 1)  
(FOR DETAIL NOT SHOWN, SEE LOCK SYSTEM 1 ELEVATION ON THIS SHEET.)

ALLOWABLE DESIGN PRESSURE (1) (SINGLE RECTANGULAR DOORS)					
LOCK SYSTEM	FRAME WIDTH	ALLOWABLE PRESSURE (PSF)		OPAQUE	
		(2) GLAZED	POS.	NEG.	POS.
2	37 1/2"	35	35	40	40
	43 1/2"	30	30	30	30
3	37 1/2"	55	55	55	55
	43 1/2"	50	50	50	50
4	37 1/2"	50	50	50	50

(1) THIS TABLE ALSO APPLIES TO EYE-BROW TOP DOORS.  
(2) "GLAZED" INCLUDES FULLY AND PARTIALLY GLAZED DOOR PANELS.

NOTE: DOORS MAY BE FULLY GLAZED AS SHOWN, PARTIALLY PANELLED OR FULLY PANELLED. SEE SHEET 8 ELEVATIONS FOR PANELLED DOORS.



EXTERIOR ELEVATION:  
SINGLE HALF-ROUND TOP DOOR  
SYSTEM 1

SCALE: 1/2" = 1'-0"  
(FOR DETAIL NOT SHOWN, SEE OTHER 2 ELEVATIONS ON THIS SHEET. NOTE THAT LOCK SYSTEMS 1 & 2 APPLY.)

ALLOWABLE DESIGN PRESSURE (SINGLE HALF-ROUND DOORS)					
LOCK SYSTEM	FRAME WIDTH	ALLOWABLE PRESSURE (PSF)		OPAQUE	
		(1) GLAZED	POS.	NEG.	POS.
1	37 1/2"	35	35	35	35
	43 1/2"	30	30	30	30
2	37 1/2"	35	35	35	35
	43 1/2"	30	30	30	30

(1) "GLAZED" INCLUDES FULLY AND PARTIALLY GLAZED DOOR PANELS.

NO.	REVISION DESCRIPTION	BY	DATE

DRAWING TITLE  
**8 FT. NON-IMPACT OUT-SWING WOOD DOORS**

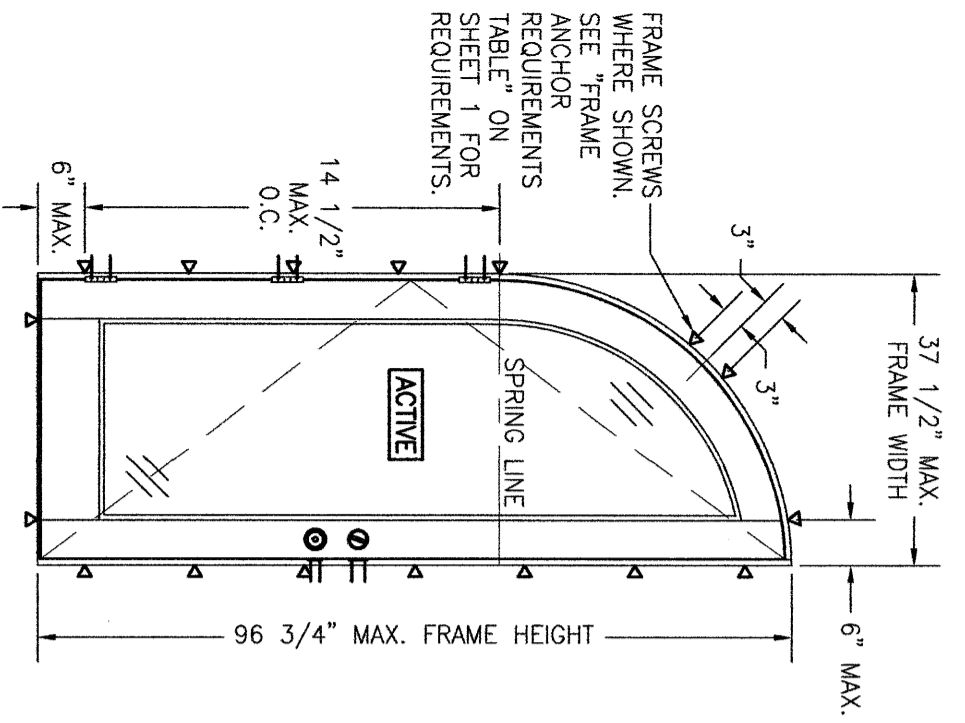
CONSULTANTS  
**W. W. SCHAEFER ENGINEERING & CONSULTING, P.A.**  
26376 NADIR ROAD; UNIT 309  
PUNTA GORDA, FL 33983  
PHONE: 561-744-3424

MANUFACTURER  
**SIGNATURE DOOR INC.**  
401 PRIORITY STREET  
ALTOONA, PA 16602  
814-949-2770

CERTIFICATION  
WARREN W. SCHAEFER, P.E.  
P.E. NO. 44135

DRAWING NO. 1899  
SHEET NO. 3 OF 16

DRAWN BY: W.W.S.  
CHECKED BY: W.W.S.  
DATE: 08/12/15



**EXTERIOR ELEVATION:  
SINGLE QUARTER-ROUND TOP DOOR**

SCALE: 1/2" = 1'-0"

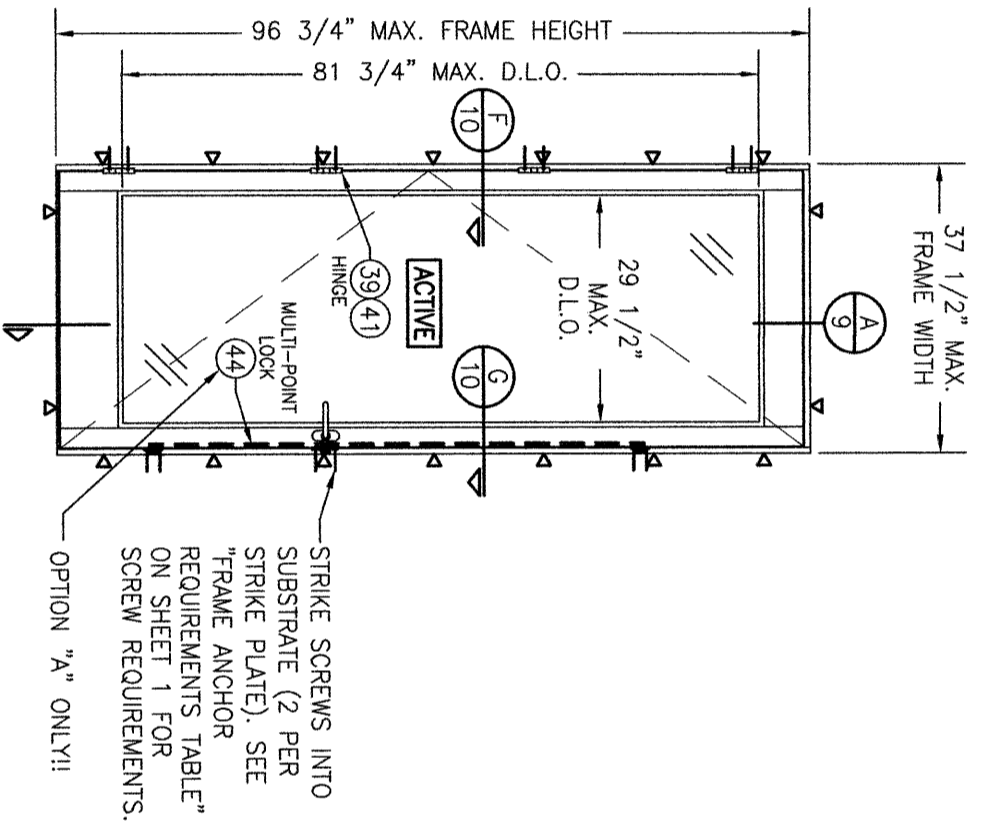
(FOR DETAIL NOT SHOWN, SEE ELEVATIONS ON SHEET 3. NOTE THAT ALL LOCK SYSTEMS APPLY.)

**ALLOWABLE DESIGN PRESSURE  
(SINGLE QUARTER-ROUND DOORS)**

LOCK SYSTEM	ALLOWABLE PRESSURE (PSF)	
	(1) GLAZED	OPAQUE
	POS.	NEG.
1	30	30
2	35	35
3	50	50

(1) "GLAZED" INCLUDES FULLY AND PARTIALLY GLAZED DOOR PANELS.

D.L.O. NOTE:  
MAX. D.L.O. DIMENSIONS SHOWN APPLY TO DOOR PANELS GLAZED WITH RECESSED MOLDING. WHEN APPLIED MOLDING IS USED, THE MAX. D.L.O. IS REDUCED 3/4".



**EXTERIOR ELEVATION:  
SINGLE RECTANGULAR ACTIVE SIDELITE**

SCALE: 1/2" = 1'-0"

(FOR INSTALLATION DETAIL NOT SHOWN, SEE ELEVATION ON SHEET 3.)  
(ONLY RECTANGULAR SHAPE & LOCK SYSTEM 2 APPLIES TO THIS SIDELITE)

**ALLOWABLE DESIGN PRESSURE  
(SINGLE RECTANGULAR ACTIVE SIDELITE)**

+45 / -45 PSF
---------------

NOTE: DOORS MAY BE FULLY GLAZED AS SHOWN, PARTIALLY PANELED OR FULLY PANELED. SEE SHEET 8 ELEVATIONS FOR PANELED DOORS.

NO.	REVISION DESCRIPTION	BY	DATE

DRAWING TITLE  
**8 FT. NON-IMPACT OUT-SWING WOOD DOORS**

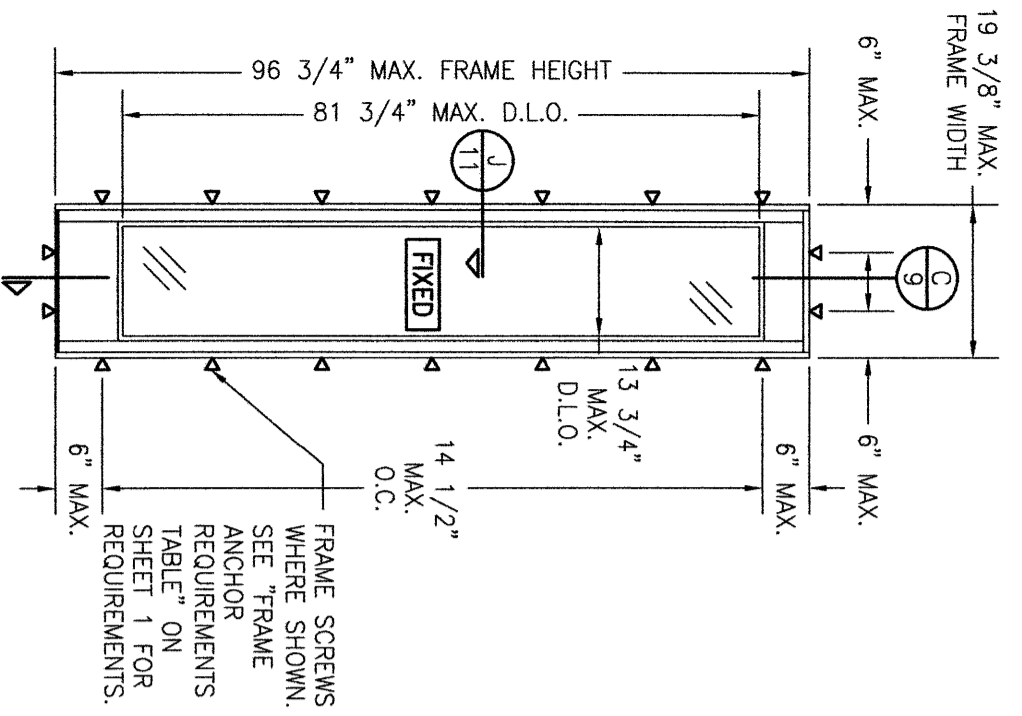
CONSULTANTS  
**W. W. SCHAEFER ENGINEERING & CONSULTING, P.A.**  
26376 NADIR ROAD; UNIT 309  
PUNTA GORDA, FL 33983  
PHONE: 561-744-3424

MANUFACTURER  
**SIGNATURE DOOR INC.**  
401 PRIORITY STREET  
ALTOONA, PA 16602  
814-949-2770

CERTIFICATION  
WARREN W. SCHAEFER, P.E.  
P.E. NO. 44135

DRAWING NO. 1899  
REV. C  
SHEET NO. 4 OF 16

DRAWN BY: W.W.S.  
CHECKED BY: W.W.S.  
DATE: 08/12/15  
PLOT: 1-24



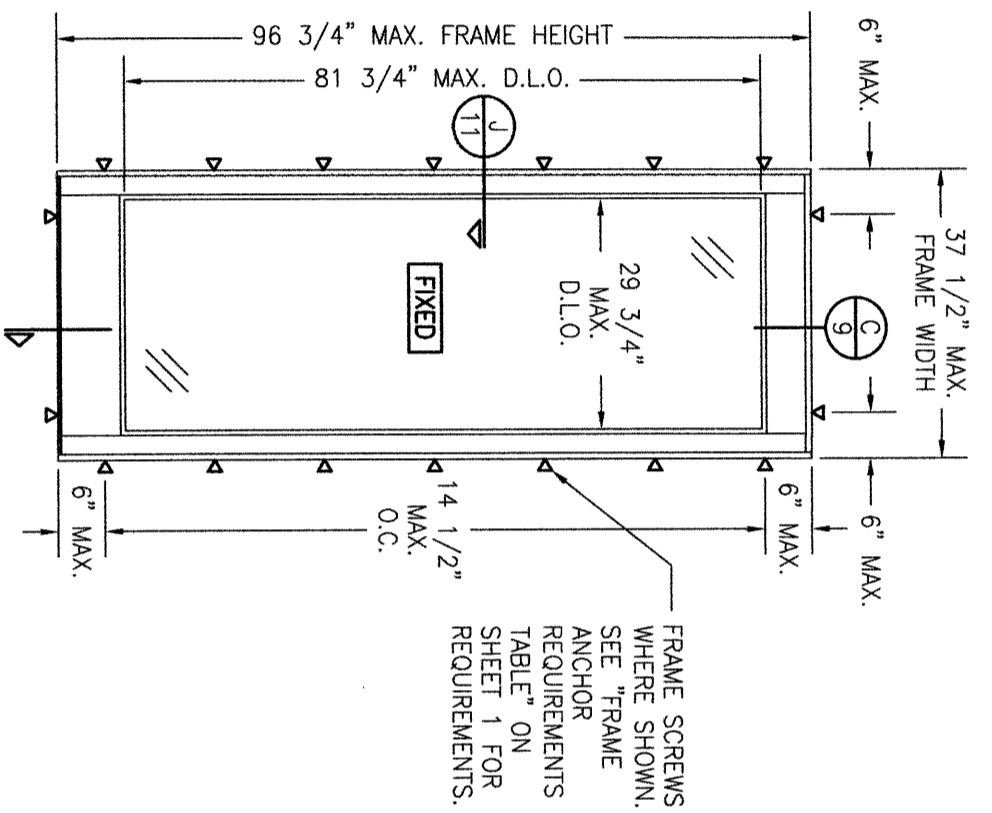
**EXTERIOR ELEVATION:  
SINGLE RECTANGULAR FIXED  
SIDELITE WITH 1.437" STILES**

SCALE: 1/2" = 1'-0"  
(RECTANGULAR FIXED SIDELITE IS SHOWN. SHAPED FIXED SIDELITES ALSO APPLY. FOR FRAME SCREW POSITIONS AT THE HEAD AREA OF SHAPED FIXED SIDELITES, SEE THE SHAPED SINGLE DOOR ELEVATIONS)

<b>ALLOWABLE DESIGN PRESSURE (SINGLE FIXED SIDELITE)</b>
+50/-50 PSF

NOTE: DOORS MAY BE FULLY GLAZED AS SHOWN, PARTIALLY PANELED OR FULLY PANELED. SEE SHEET 8 ELEVATIONS FOR PANELED DOORS.

D.L.O. NOTE:  
MAX. D.L.O. DIMENSIONS SHOWN APPLY TO DOOR PANELS GLAZED WITH RECESSED MOLDING. WHEN APPLIED MOLDING IS USED, THE MAX. D.L.O. IS REDUCED 3/4".

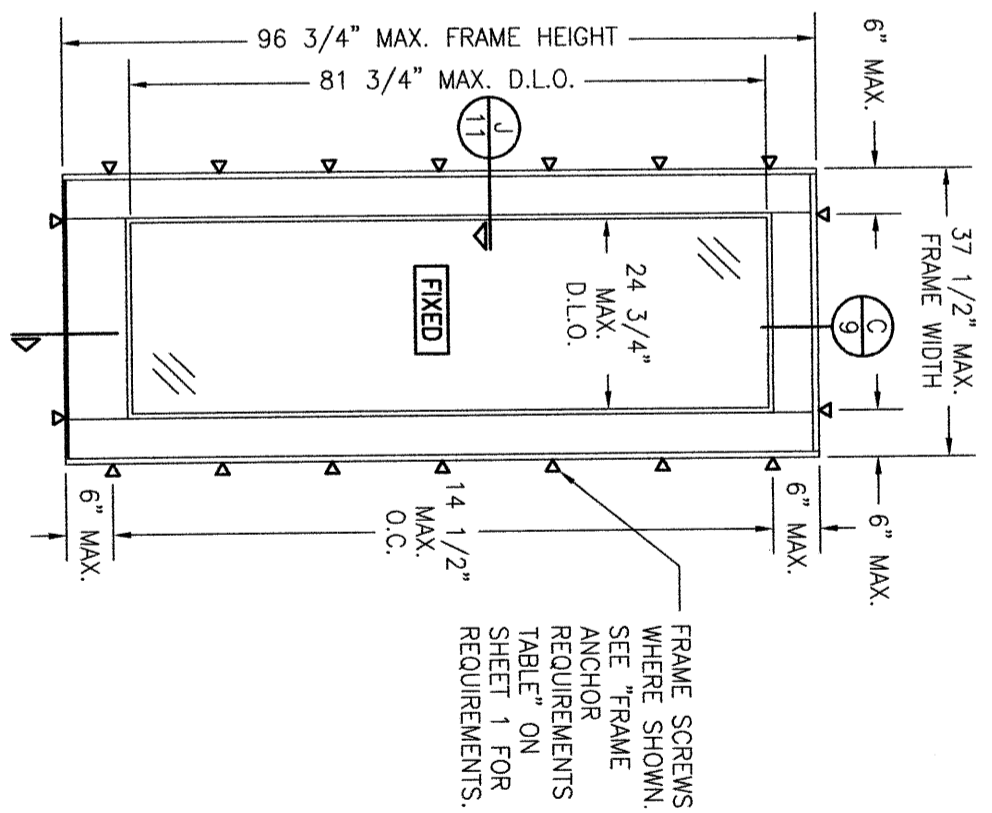


**EXTERIOR ELEVATION:  
SINGLE RECTANGULAR FIXED SIDELITE WITH  
2.50" STILES**

SCALE: 1/2" = 1'-0"  
(RECTANGULAR FIXED SIDELITE IS SHOWN. SHAPED FIXED SIDELITES ALSO APPLY. FOR FRAME SCREW POSITIONS AT THE HEAD AREA OF SHAPED FIXED SIDELITES, SEE THE SHAPED SINGLE DOOR ELEVATIONS)

<b>ALLOWABLE DESIGN PRESSURE (SINGLE FIXED SIDELITE)</b>
+45/-45 PSF

SIDELIGHT NOTE:  
SIDELITES ARE NOT APPROVED TO BE STAND ALONE WINDOWS AND THEREFORE MUST BE INSTALLED AS PART OF THE DOOR SYSTEM IN THE SAME LOCATION AS THE DOORS. NOTE THAT WATER RESTRICTIONS APPLY TO THE SIDELITES AND OPERABLE DOORS EQUALLY.



**EXTERIOR ELEVATION:  
SINGLE RECTANGULAR FIXED SIDELITE WITH  
5" STILES**

SCALE: 1/2" = 1'-0"  
(RECTANGULAR FIXED SIDELITE IS SHOWN. SHAPED FIXED SIDELITES ALSO APPLY. FOR FRAME SCREW POSITIONS AT THE HEAD AREA OF SHAPED FIXED SIDELITES, SEE THE SHAPED SINGLE DOOR ELEVATIONS)

<b>ALLOWABLE DESIGN PRESSURE (SINGLE FIXED SIDELITE)</b>
+55/-55 PSF

DRAWN BY: W.M.S.	CHECKED BY: W.M.S.		
DATE: 08/12/15			
NO.	REVISION DESCRIPTION	BY	DATE

DRAWING TITLE  
**8 FT. NON-IMPACT OUT-SWING WOOD DOORS**

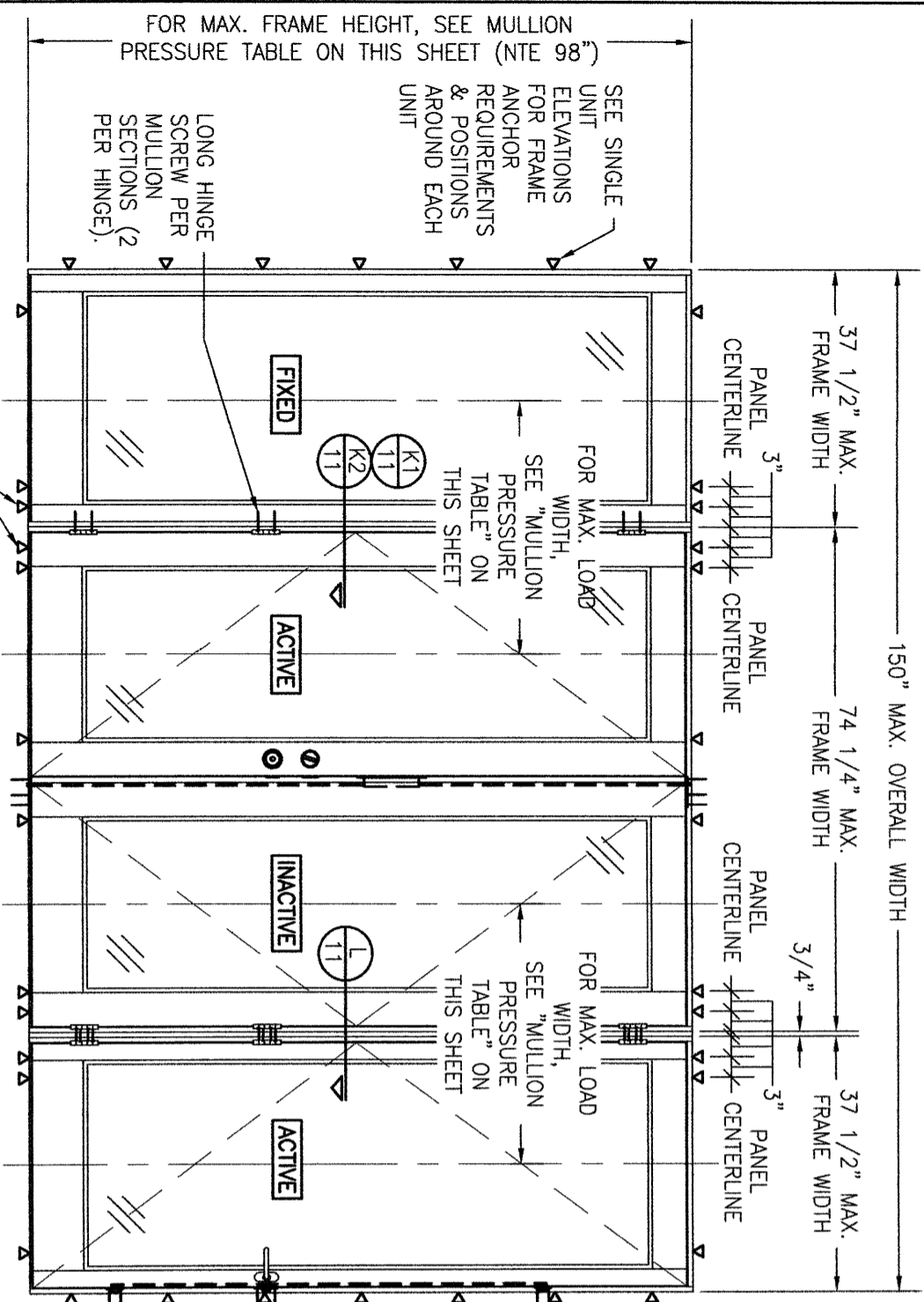
CONSULTANTS  
**W. W. SCHAEFER ENGINEERING  
& CONSULTING, P.A.**  
26376 NADIR ROAD, UNIT 309  
PUNTA GORDA, FL 33983  
PHONE: 561-744-3424

MANUFACTURER  
**SIGNATURE DOOR INC.**  
401 PRIORITY STREET  
ALTOONA, PA 16602  
814-949-2770

CERTIFICATION

WARREN W. SCHAEFER, P.E.  
P.E. NO. 44135

DRAWING NO. 1899  
SHEET NO. 5 OF 16



ADDITIONAL FRAME SCREWS WHERE SHOWN AT MULLION ENDS. SEE "FRAME ANCHOR REQUIREMENTS TABLE" ON SHEET 1 FOR REQUIREMENTS.

**EXTERIOR ELEVATION:  
SIDE-BY-SIDE MULLED UNITS**

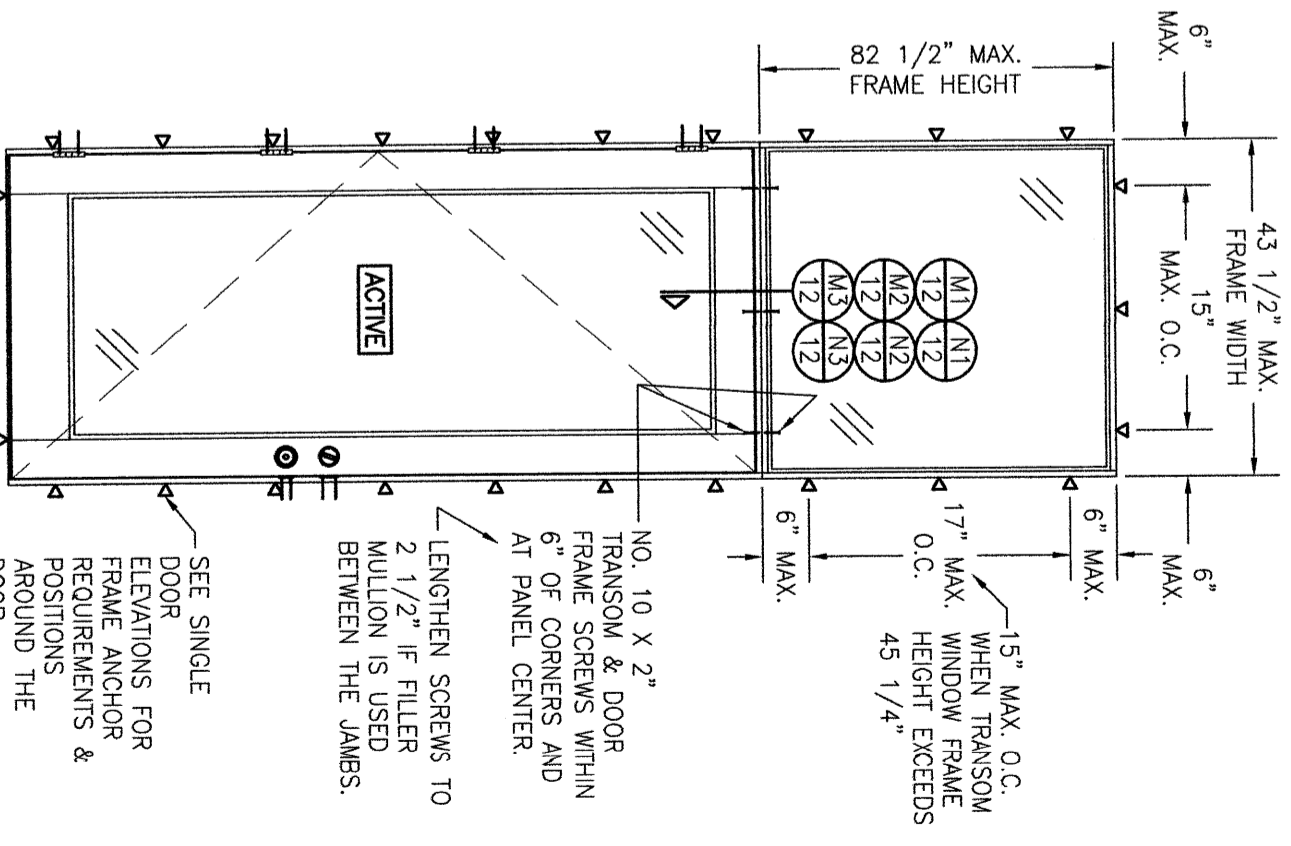
SCALE: 1/2" = 1'-0"  
(RECTANGULAR UNIT SHOWN. ARCHED TOP UNITS ALSO APPLY PROVIDING THE ARCH IS CONTINUOUS ACROSS THE HEAD)

**MULTIPLE UNIT NOTES:**

1. FOR ALL DETAIL NOT SHOWN, SEE INDIVIDUAL UNIT ELEVATIONS.
2. OXXX UNIT IS SHOWN. ALL OTHER FIXED/OPERABLE COMBINATIONS UP TO 4 PANELS WIDE ALSO APPLY WITH THE MULLION CONDITIONS SHOWN.
3. INDIVIDUAL DOOR SIZES SHALL BE RESTRICTED AS SPECIFIED IN THE SINGLE UNIT ELEVATIONS.
4. A WOOD FILLER MULLION IS REQUIRED BETWEEN ACTIVE/ACTIVE DOORS (NOT REQUIRED BETWEEN FIXED/ACTIVE OR FIXED/FIXED JAMBS).
4. THIS ELEVATION IS SHOWN WITH EACH DOOR AND SIDELITE HAVING ITS OWN SURROUND FRAME. USE OF A CONTINUOUS FRAME AROUND THE ENTIRE UNIT ALSO APPLIES. SEE CORNER CONSTRUCTION DESCRIPTION ON SHEET 1 FOR "MULLION JAMBS TO HEAD & SILL" DESCRIPTION WHEN HEAD & SILL FRAME IS CONTINUOUS.

MULLION ALLOWABLE DESIGN PRESSURE (SIDE-BY-SIDE UNITS)	MAXIMUM MULLION SPAN (IN.)	MAXIMUM LOAD WIDTH (IN.)	ALLOWABLE PRESSURE (PSF)	
			POS.	NEG.
98	40.5	41.6	41.6	
	37.5	45.0	45.0	
	34.5	48.9	48.9	
	31.5	53.5	53.5	
	28.5	59.2	59.2	
92	40.5	44.3	44.3	
	37.5	47.9	47.9	
	34.5	52.1	52.1	
	31.5	57.0	57.0	
	30.5	58.9	58.9	
86	40.5	47.4	47.4	
	37.5	51.2	51.2	
	34.5	55.7	55.7	
	32.5	59.1	59.1	
	40.5	47.4	47.4	
80	37.5	55.1	55.1	
	34.5	59.9	59.9	

NOTES:  
1. SEE ELEVATIONS FOR DIMENSIONING OF LOAD WIDTH.  
2. ALLOWABLE UNIT PRESSURE SHALL BE THE LESSER OF THE PRESSURE SHOWN IN THIS TABLE & THAT SPECIFIED FOR THE INDIVIDUAL DOOR.  
3. WHEN A WOOD FILLER IS USED BETWEEN THE JAMBS, THE "LOAD WIDTH" VALUE NEED NOT CONSIDER THAT ADDED THICKNESS. VALUES STATED CONSIDER NO FILLER.



**EXTERIOR ELEVATION:  
(SINGLE DOOR WITH TRANSOM)**

SCALE: 1/2" = 1'-0"

**TRANSOM UNIT NOTES:**

1. RECTANGULAR TRANSOM UNIT SHOWN. SHAPED TRANSOM ALSO APPLIES.
2. TRANSOM MAY BE A DIRECT SET OR SASH SET WINDOW.
3. SEE INDIVIDUAL DOOR ELEVATIONS FOR DOOR DETAIL NOT SHOWN.
4. SEE ELEVATIONS ON SHEET 7 OR 8 FOR TRANSOM DETAIL NOT SHOWN.
5. UNIT SHOWN WITH JAMB TO JAMB MULLION. USE OF THE 3/4" AND 1 3/4" WOOD MULLIONS IS ALSO ACCEPTABLE.

**ALLOWABLE DESIGN PRESSURE  
(SINGLE DOOR WITH TRANSOM)**

+55/-55 PSF

NOTE: ALLOWABLE UNIT PRESSURE SHALL BE THE LESSER OF THE PRESSURE SHOWN IN THIS TABLE & THAT SPECIFIED FOR THE INDIVIDUAL DOOR.

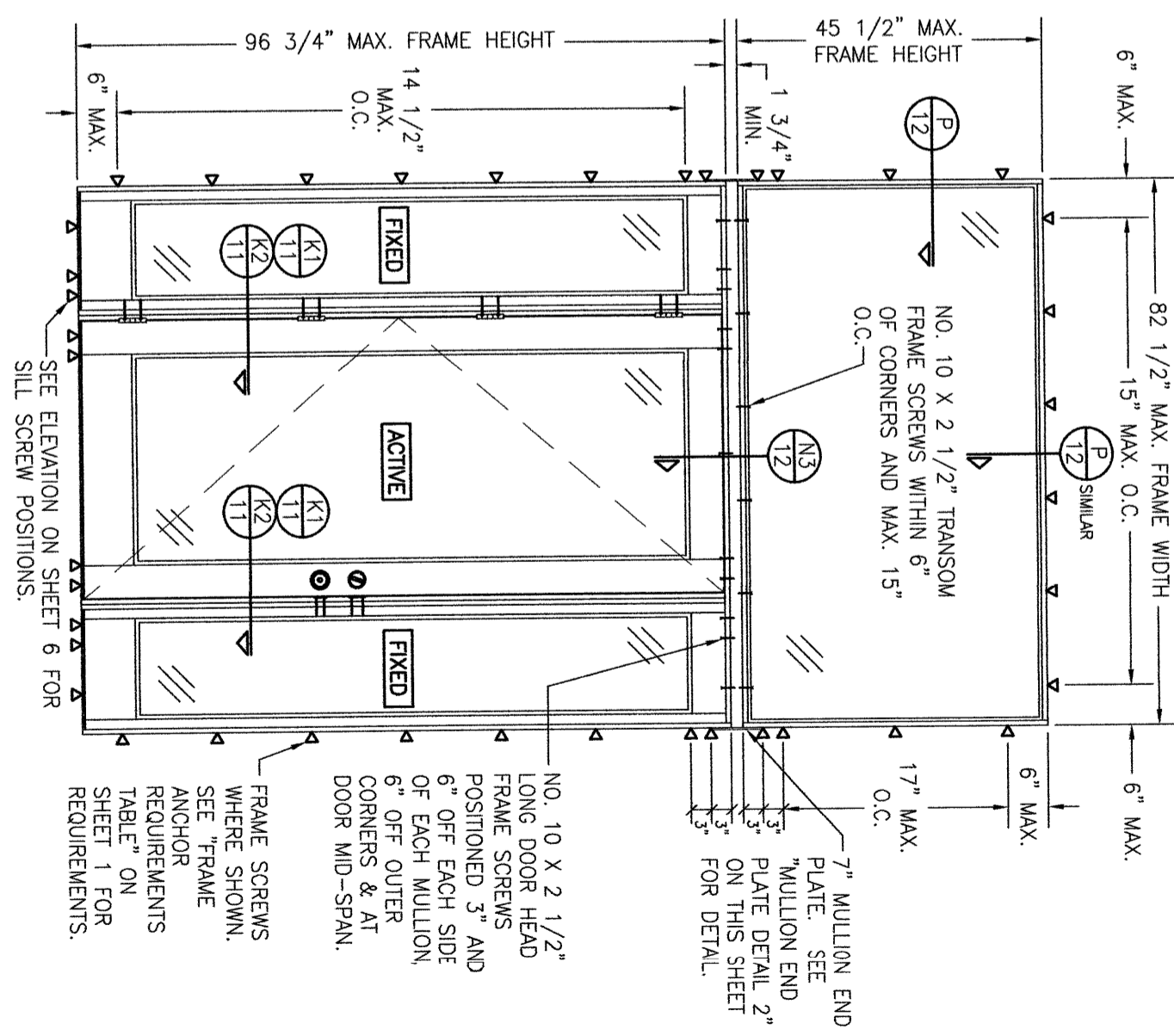
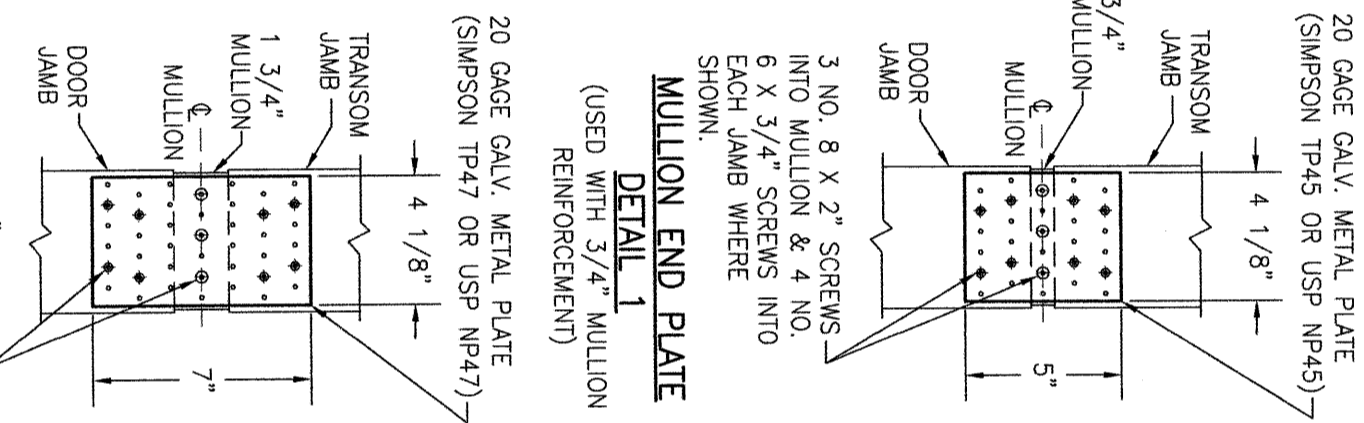
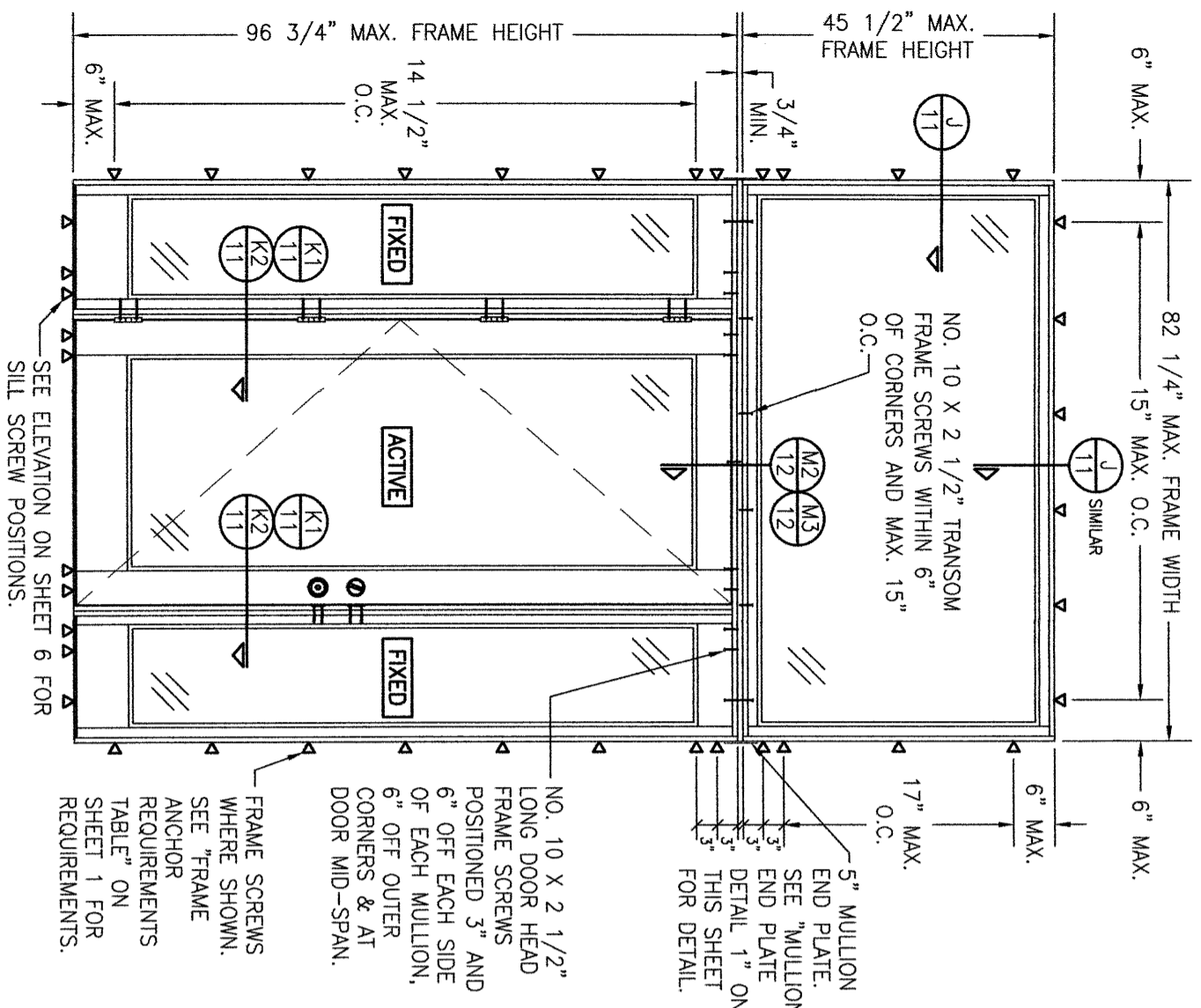
NO.	REVISION DESCRIPTION	BY	DATE

MANUFACTURER  
**SIGNATURE DOOR INC.**  
401 PRIORITY STREET  
ALTOONA, PA 16602  
814-949-2770

CONSULTANTS  
**W. W. SCHAEFER ENGINEERING & CONSULTING, P.A.**  
26376 NADIR ROAD; UNIT 309  
PUNTA GORDA, FL 33983  
PHONE: 561-744-3424

CERTIFICATION  
WARREN W. SCHAEFER, P.E.  
P.E. NO. 44135

DRAWING NO. REV.  
**1899 C**  
SHEET NO.  
**6 OF 16**



- TRANSOM UNIT NOTES:**
1. ALL HEAD FRAMES AND SILLS MUST BE CONTINUOUS ACROSS ENTIRE UNIT.
  2. ALLOWABLE DESIGN PRESSURE, UNIT SIZE & OTHER MULLION CONDITIONS OUTSIDE OF THOSE SHOWN SHALL BE SUBJECT TO SEPARATE JOB SPECIFIC ENGINEER'S REVIEW AND CERTIFICATION.

**ALLOWABLE DESIGN PRESSURE**  
(OXO UNIT WITH SASH SET TRANSOM)

+50/-50 PSF

**NOTE:** ALLOWABLE UNIT PRESSURE SHALL BE THE LESSER OF THE PRESSURE SHOWN IN THIS TABLE & THAT SPECIFIED FOR THE INDIVIDUAL DOOR.

- MULLION END PLATE  
DETAIL 2**
1. ALL HEAD FRAMES AND SILLS MUST BE CONTINUOUS ACROSS ENTIRE UNIT.
  2. ALLOWABLE DESIGN PRESSURE, UNIT SIZE & OTHER MULLION CONDITIONS OUTSIDE OF THOSE SHOWN SHALL BE SUBJECT TO SEPARATE JOB SPECIFIC ENGINEER'S REVIEW AND CERTIFICATION.

**SEE INDIVIDUAL DOOR AND SIDELITE ELEVATIONS FOR DOOR AND SIDELITE REQUIREMENTS/DETAIL NOT SHOWN.**

**ALLOWABLE DESIGN PRESSURE**  
(OXO UNIT WITH DIRECT SET TRANSOM)

+50/-50 PSF

**NOTE:** ALLOWABLE UNIT PRESSURE SHALL BE THE LESSER OF THE PRESSURE SHOWN IN THIS TABLE & THAT SPECIFIED FOR THE INDIVIDUAL DOOR.

NO.	REVISION	DESCRIPTION	BY	DATE

**DRAWING TITLE**  
8 FT. NON-IMPACT OUT-SWING WOOD DOORS

**CONSULTANTS**  
W. W. SCHAEFER ENGINEERING & CONSULTING, P.A.  
26376 NADIR ROAD, UNIT 309  
PUNTA GORDA, FL 33983  
PHONE: 561-744-3424

**MANUFACTURER**  
SIGNATURE DOOR INC.  
401 PRIORITY STREET  
ALTOONA, PA 16602  
814-949-2770

**CERTIFICATION**

WARREN W. SCHAEFER P.E.  
P.E. NO. 44135

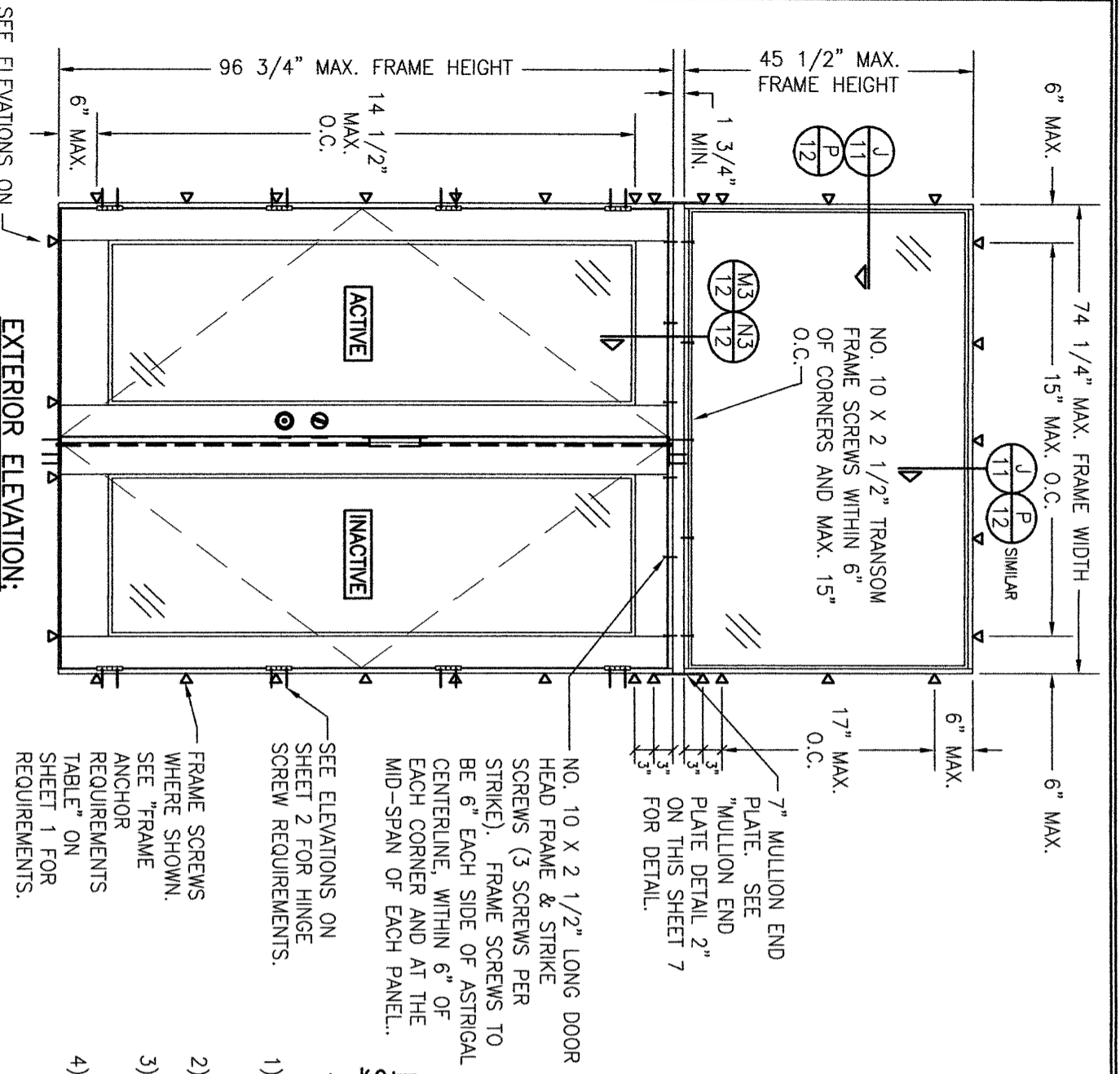
**DRAWING NO.**  
1899

**REV.**  
C

**SHEET NO.**  
7 OF 16

**DRAWN BY:** W.W.S.  
**DATE:** 09/12/15

**CHECKED BY:** W.W.S.



**EXTERIOR ELEVATION:  
(DOUBLE DOOR WITH TRANSOM)**

SCALE: 1/2" = 1'-0"  
(RECTANGULAR TRANSOM SHOWN. RADIUS OR ANGLED TOP TRANSOM ALSO APPLIES.)

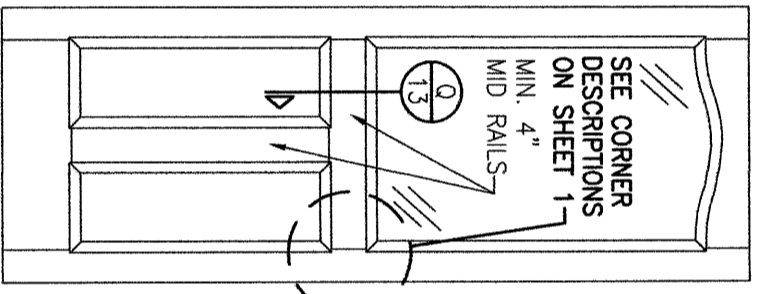
SEE ELEVATIONS ON SHEET 2 FOR SILL SCREW POSITIONS.

NO. 10 X 2 1/2" LONG DOOR HEAD FRAME & STRIKE SCREWS (3 SCREWS PER STRIKE). FRAME SCREWS TO BE 6" EACH SIDE OF ASTRIGAL CENTERLINE, WITHIN 6" OF EACH CORNER AND AT THE MID-SPAN OF EACH PANEL.

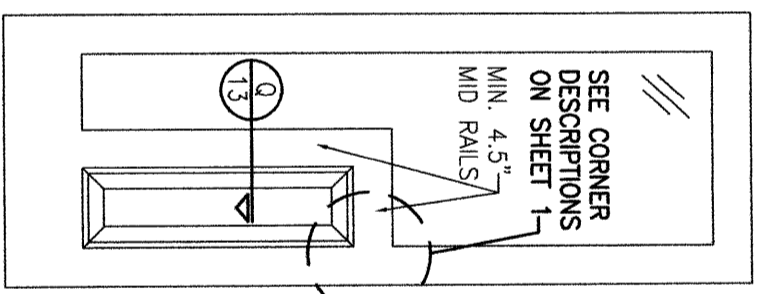
7" MULLION END PLATE. SEE "MULLION END PLATE DETAIL 2" ON THIS SHEET 7 FOR DETAIL.

SEE ELEVATIONS ON SHEET 2 FOR HINGE SCREW REQUIREMENTS.

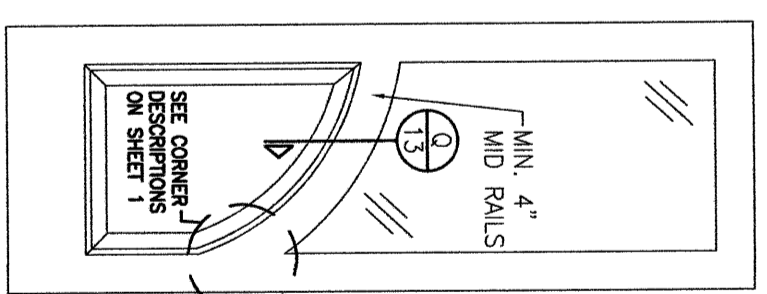
FRAME SCREWS WHERE SHOWN. SEE "FRAME ANCHOR REQUIREMENTS TABLE" ON SHEET 1 FOR REQUIREMENTS.



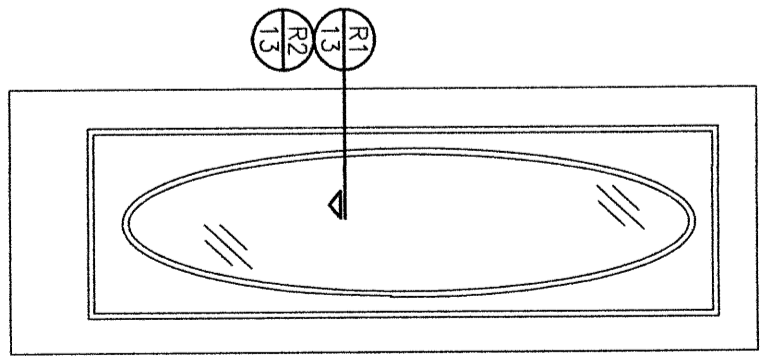
**EXTERIOR ELEVATION  
SOLID RAISED PANEL  
WITH STANDARD MID  
RAILS**



**EXTERIOR ELEVATION  
SOLID RAISED PANEL  
WITH CORNERED MID  
RAILS**



**EXTERIOR ELEVATION  
SOLID RAISED PANEL  
WITH ARCHED/SHAPED  
MID RAILS**



**EXTERIOR ELEVATION  
RAISED PANEL WITH  
GLASS GLAZED TO  
PANEL**

- 1) TOP & MID RAILS MAY BE OF ANY CONFIGURATION PROVIDING THE SMALLEST CROSS SECTION OF RAILS IS EQUAL TO OR LARGER THAN THAT DETAILED IN DRAWINGS.
- 2) MULTIPLE MID RAIL (BOTH HORIZONTAL & VERTICAL) MAY BE USED WITH THESE PANELS.
- 3) PARTIAL PANEL CONDITION IS SHOWN ABOVE. FULL PANEL DOORS AND OTHER PANEL CONFIGURATIONS ARE ALSO PART OF THIS APPROVAL PROVIDING THEY ARE SIMILAR IN CONSTRUCTION TO THAT SHOWN ABOVE.
- 4) PANEL ONLY IS SHOWN. FOR INSTALLATION INTO FRAME, SEE OTHER ELEVATIONS.

- 1) DAY LIGHT OPENING IN PANEL DOOR MAY BE OF ANY CONFIGURATION.
- 2) FULL LIGHT & OVAL CONDITION IS SHOWN. PARTIAL LIGHT & OTHER LIGHT CONFIGURATIONS ARE ALSO APPLICABLE PROVIDING PANEL CONDITIONS ARE WITHIN WHAT IS SPECIFIED IN THESE DRAWINGS.
- 3) PANEL ONLY IS SHOWN. FOR INSTALLATION INTO FRAME, SEE OTHER ELEVATIONS.

- TRANSOM UNIT NOTES:**
1. TRANSOM MAY BE A DIRECT SET OR SASH SET WINDOW.
  2. ALLOWABLE DESIGN PRESSURE, UNIT SIZE & OTHER MULLION CONDITIONS OUTSIDE OF THOSE SHOWN SHALL BE SUBJECT TO SEPARATE JOB SPECIFIC ENGINEER'S REVIEW AND CERTIFICATION.
  3. RECTANGULAR TRANSOM UNIT SHOWN. RADIUS AND ANGLED TOP TRANSOM ALSO APPLIES.
  4. SEE INDIVIDUAL DOOR ELEVATIONS FOR DOOR DETAIL NOT SHOWN.

**ALLOWABLE DESIGN PRESSURE  
(DOUBLE DOOR WITH TRANSOM)**

+55/-55 PSF

NOTE: ALLOWABLE UNIT PRESSURE SHALL BE THE LESSER OF THE PRESSURE SHOWN IN THIS TABLE & THAT SPECIFIED FOR THE INDIVIDUAL DOOR.

NO.	REVISION	DESCRIPTION	BY	DATE

**DRAWING TITLE**  
8 FT. NON-IMPACT OUT-SWING WOOD DOORS

**CONSULTANTS**  
W. W. SCHAEFER ENGINEERING & CONSULTING, P.A.  
26376 NADIR ROAD; UNIT 309  
PUNTA GORDA, FL 33983  
PHONE: 561-744-3424

**MANUFACTURER**  
SIGNATURE DOOR INC.  
401 PRIORITY STREET  
ALTOONA, PA 16602  
814-949-2770

**CERTIFICATION**  
WARREN W. SCHAEFER, P.E.  
P.E. NO. 44135

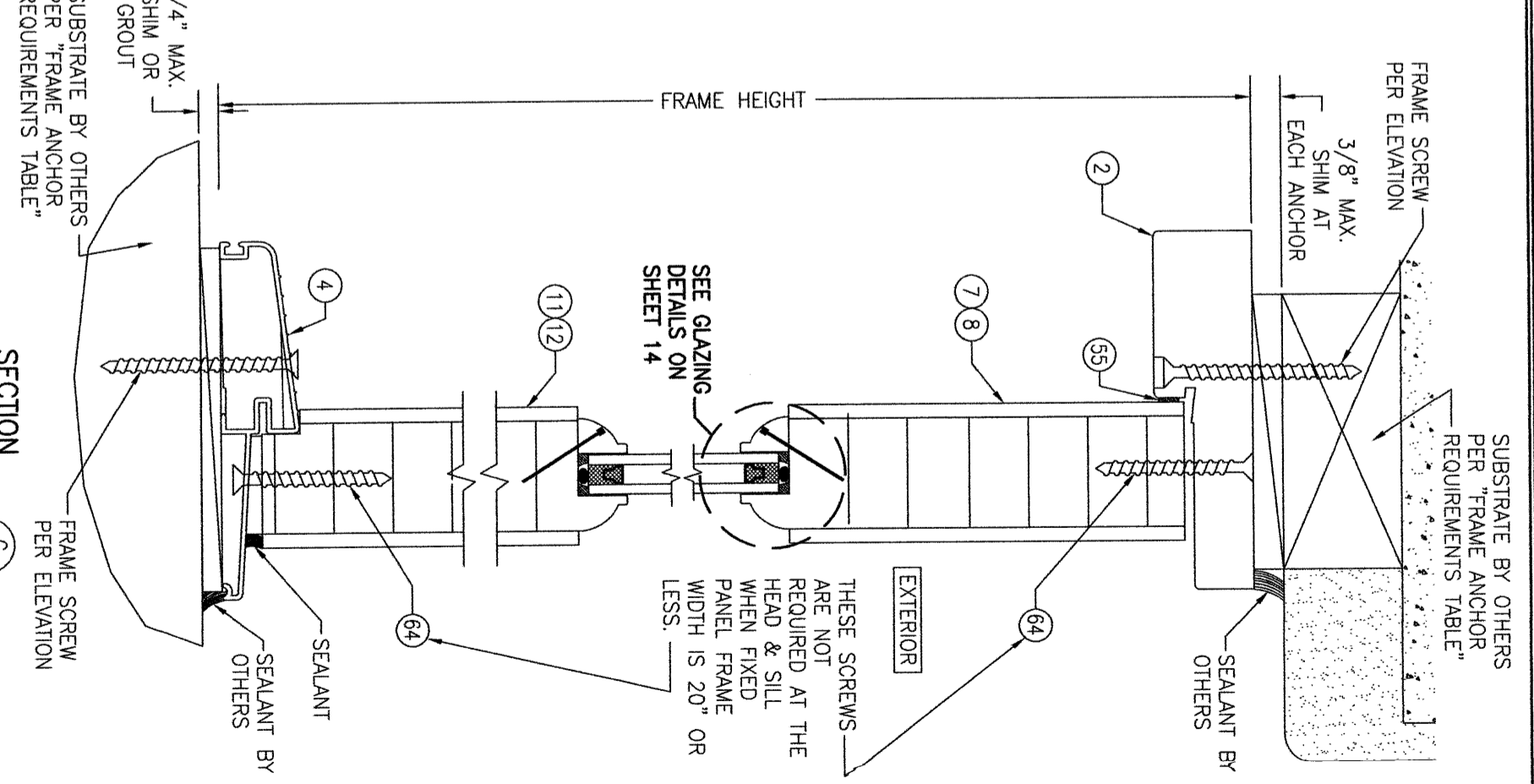
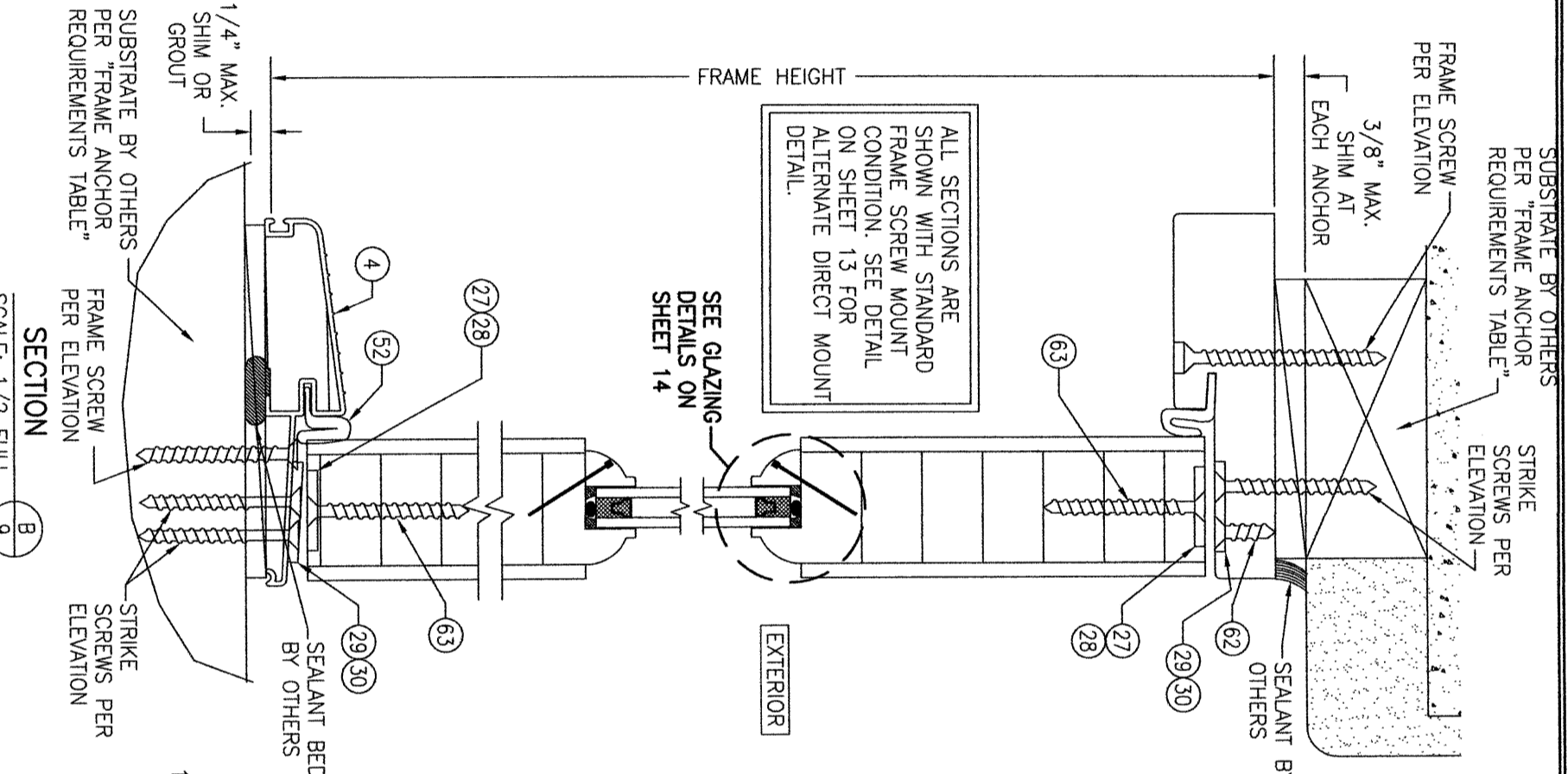
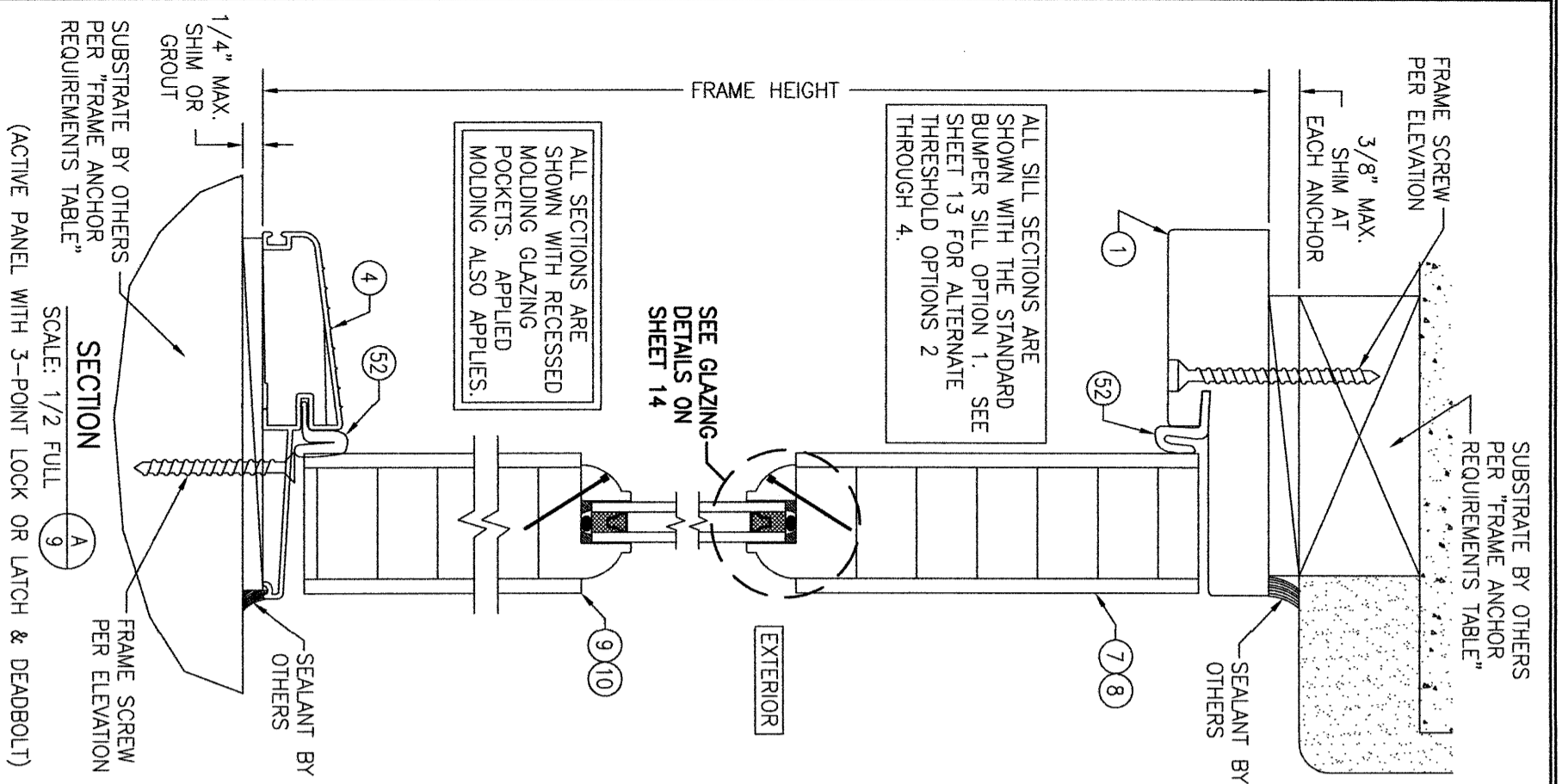
**DRAWING NO.**  
1899

**REV.**  
C

**SHEET NO.**  
8 OF 16

DRAWN BY: W.W.S.  
CHECKED BY: W.W.S.  
DATE: 08/12/15





ALL SILL SECTIONS ARE SHOWN WITH RECESSED MOLDING GLAZING POCKETS. APPLIED MOLDING ALSO APPLIES.

ALL SILL SECTIONS ARE SHOWN WITH THE STANDARD BUMPER SILL OPTION 1. SEE SHEET 13 FOR ALTERNATE THRESHOLD OPTIONS 2 THROUGH 4.

ALL SECTIONS ARE SHOWN WITH STANDARD FRAME SCREW MOUNT CONDITION. SEE DETAIL ON SHEET 13 FOR ALTERNATE DIRECT MOUNT DETAIL.

EXTERIOR  
THESE SCREWS ARE NOT REQUIRED AT THE HEAD & SILL WHEN FIXED PANEL FRAME WIDTH IS 20" OR LESS.

CERTIFICATION

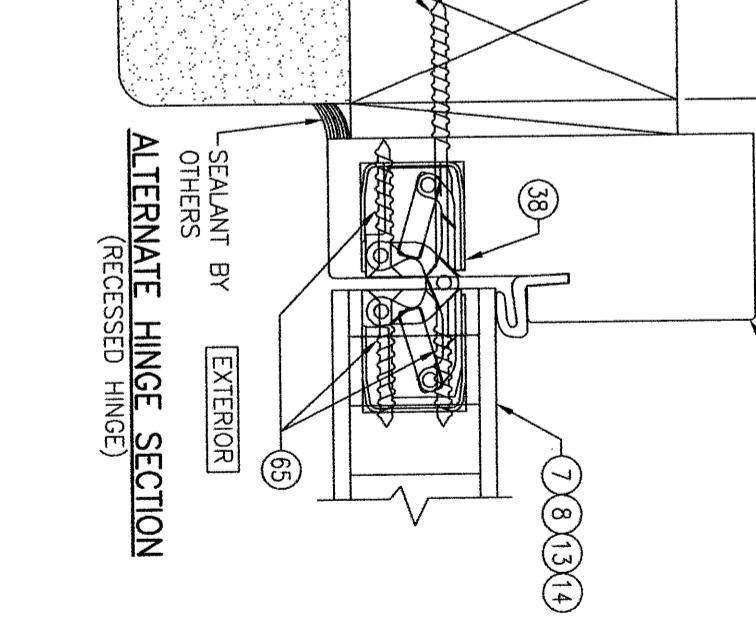
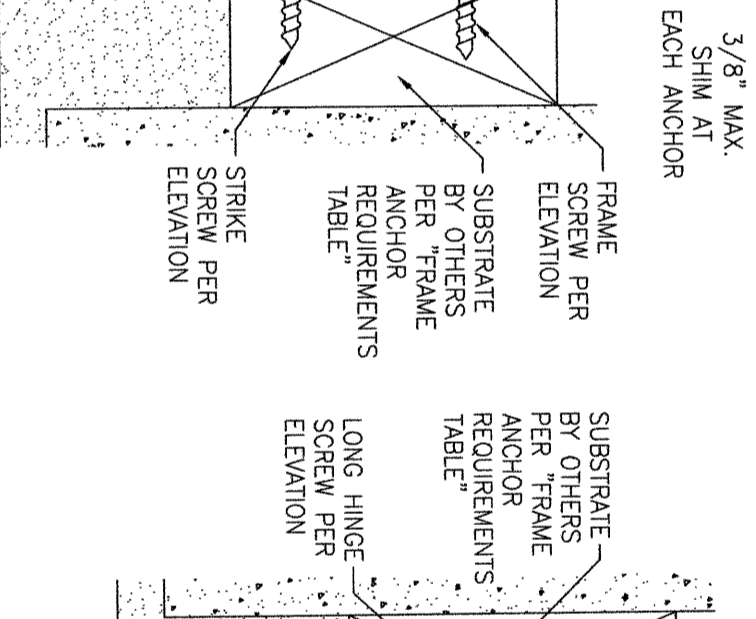
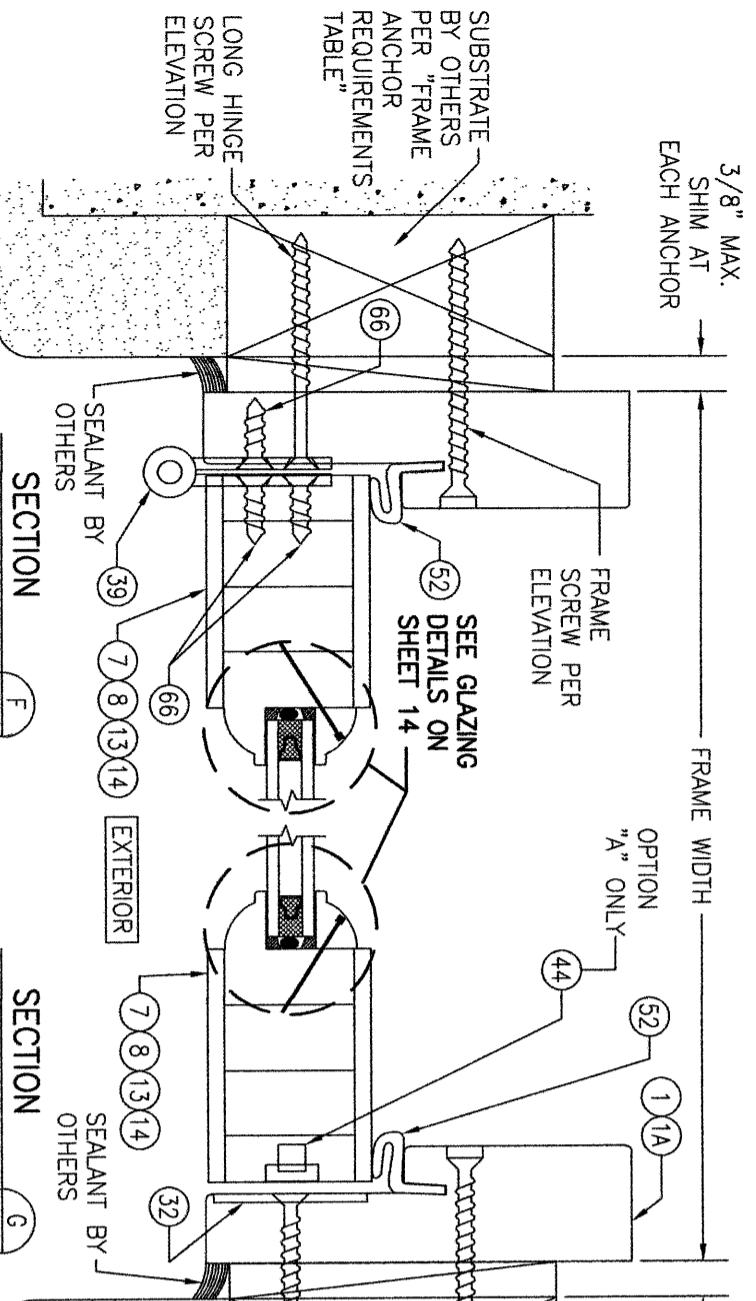
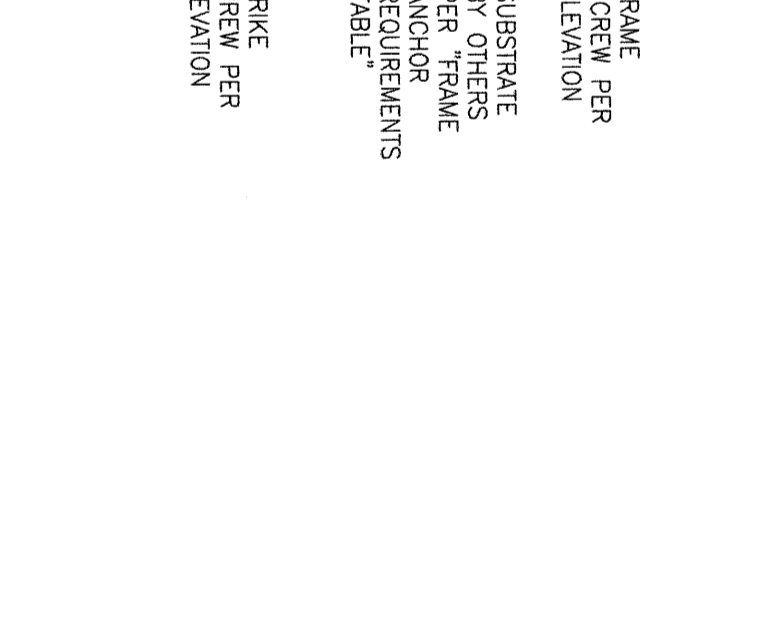
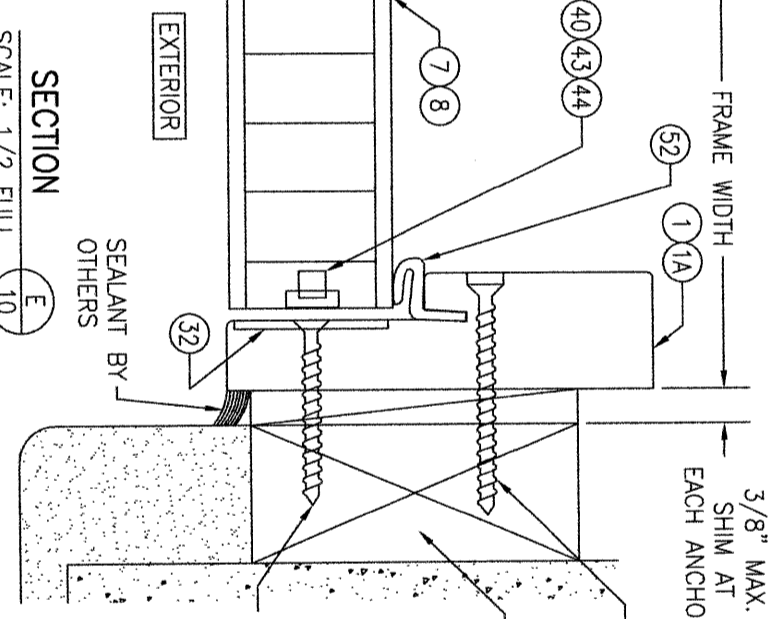
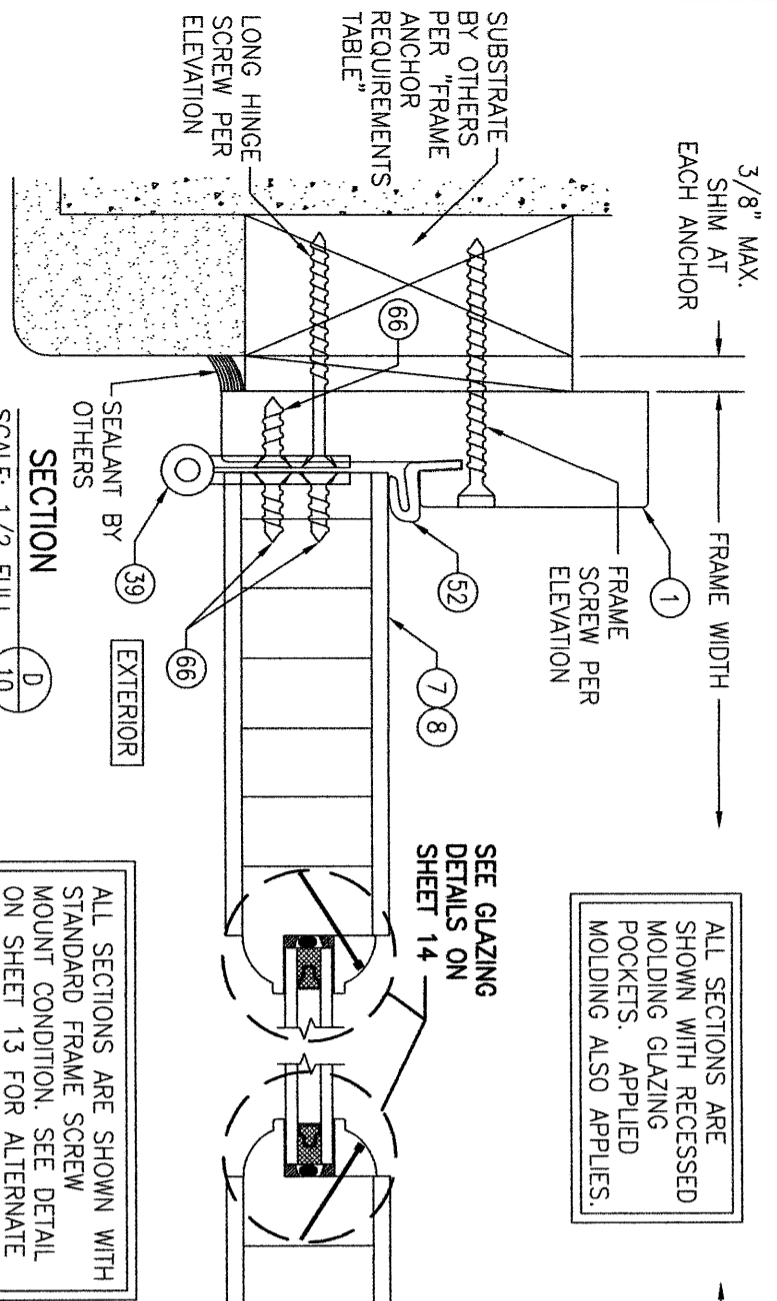
WARREN W. SCHAEFER, P.E.  
P.E. NO. 44135

DRAWING TITLE  
8 FT. NON-IMPACT OUT-SWING WOOD DOORS

CONSULTANTS  
W. W. SCHAEFER ENGINEERING & CONSULTING, P.A.  
26376 NADIR ROAD; UNIT 309  
PUNTA GORDA, FL 33983  
PHONE: 561-744-3424

MANUFACTURER  
SIGNATURE DOOR INC.  
401 PRIORITY STREET  
ALTOONA, PA 16602  
814-949-2770

NO.	REVISION	DESCRIPTION	BY	DATE
1-2				08/12/15



ALL SECTIONS ARE SHOWN WITH RECESSED MOLDING GLAZING POCKETS. APPLIED MOLDING ALSO APPLIES.

ALL SECTIONS ARE SHOWN WITH STANDARD FRAME SCREW MOUNT CONDITION. SEE DETAIL ON SHEET 13 FOR ALTERNATE DIRECT MOUNT DETAIL.

(BUTT HINGE SHOWN. RECESSED HINGE ALSO APPLIES. SEE SECTION ON THIS SHEET FOR RECESSED HINGE CONDITION.)

(BUTT HINGE SHOWN. RECESSED HINGE ALSO APPLIES. SEE SECTION ON THIS SHEET FOR RECESSED HINGE CONDITION.)

NO.	REVISION DESCRIPTION	BY	DATE
1-2			

**DRAWING TITLE**  
8 FT. NON-IMPACT OUT-SWING WOOD DOORS

**CONSULTANTS**  
W. W. SCHAEFER ENGINEERING & CONSULTING, P.A.  
26376 NADIR ROAD; UNIT 309  
PUNTA GORDA, FL 33983  
PHONE: 561-744-3424

**MANUFACTURER**  
SIGNATURE DOOR INC.  
401 PRIORITY STREET  
ALTOONA, PA 16602  
814-949-2770

**CERTIFICATION**  
WARREN W. SCHAEFER, P.E.  
P.E. NO. 44135

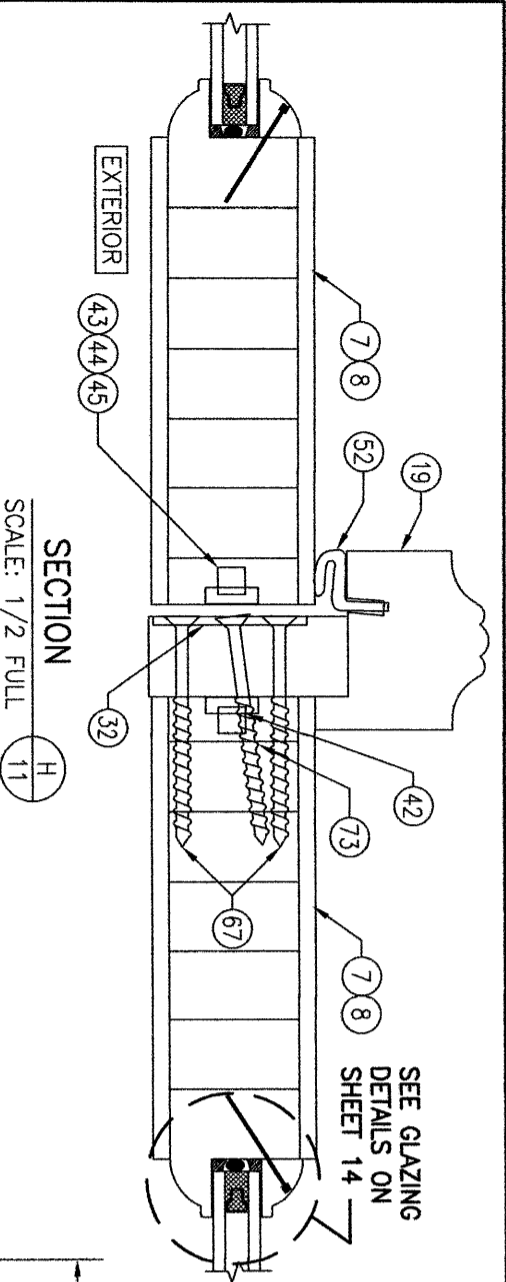
**DRAWING NO.**  
1899  
**REV.**  
C

**SHEET NO.**  
10 OF 16

**DRAWN BY:**  
W.W.S.

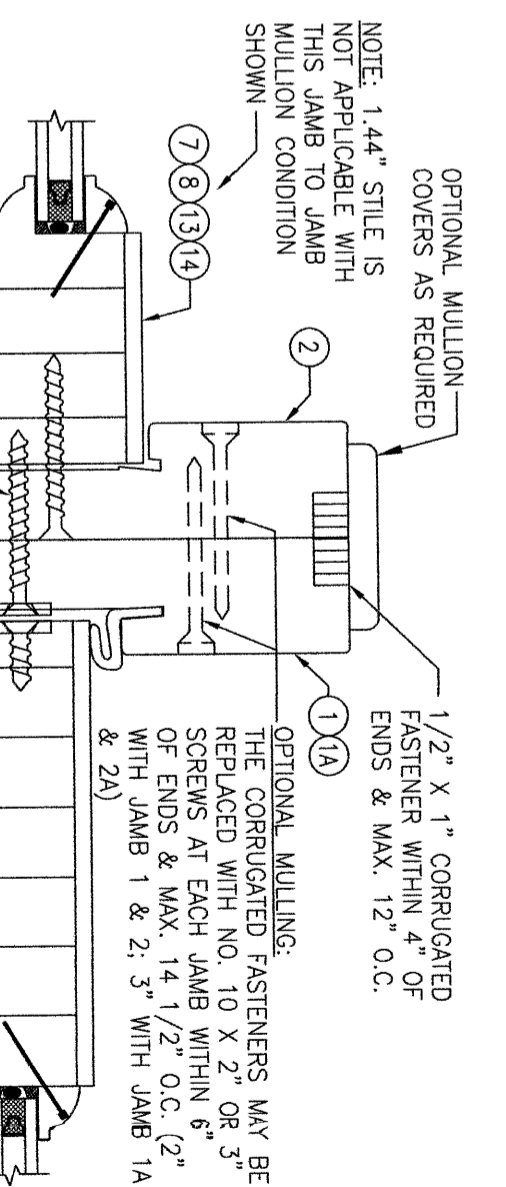
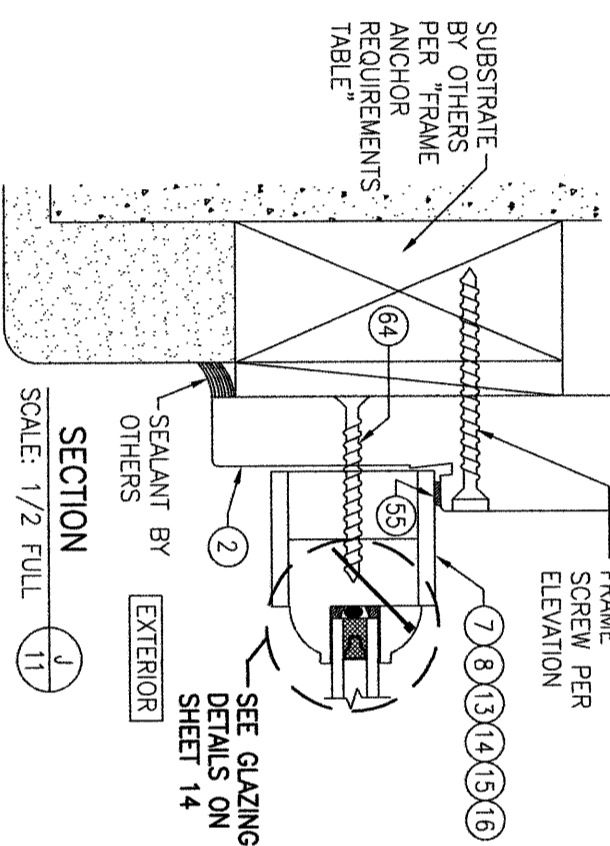
**CHECKED BY:**  
W.W.S.

**DATE:**  
09/12/15

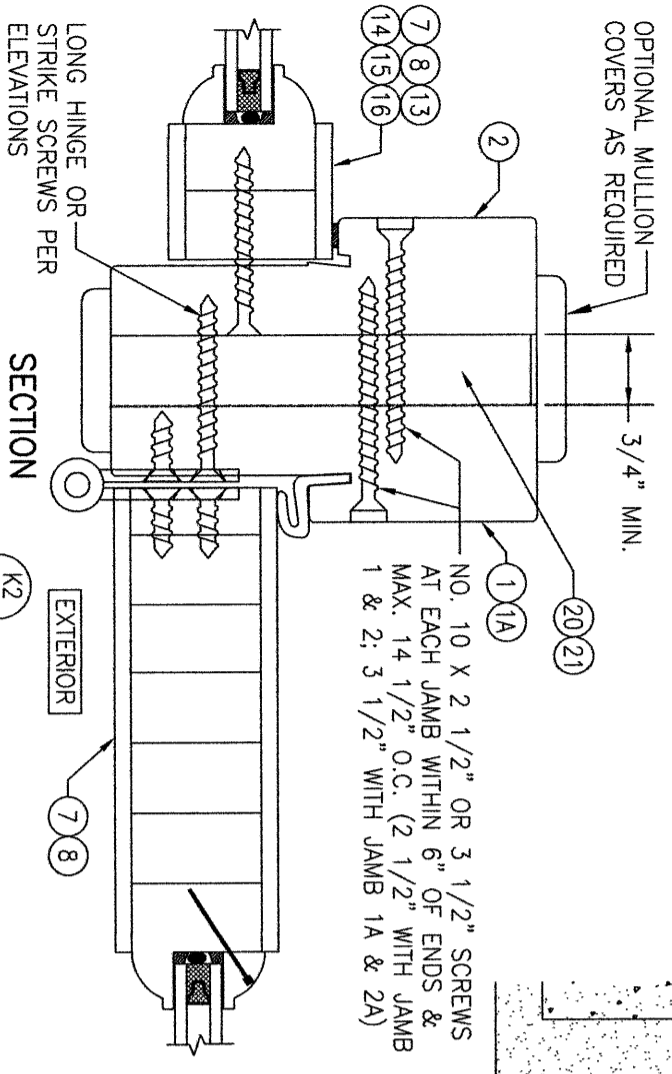


ALL SECTIONS ARE SHOWN WITH RECESSED MOLDING GLAZING POCKETS. APPLIED MOLDING ALSO APPLIES.

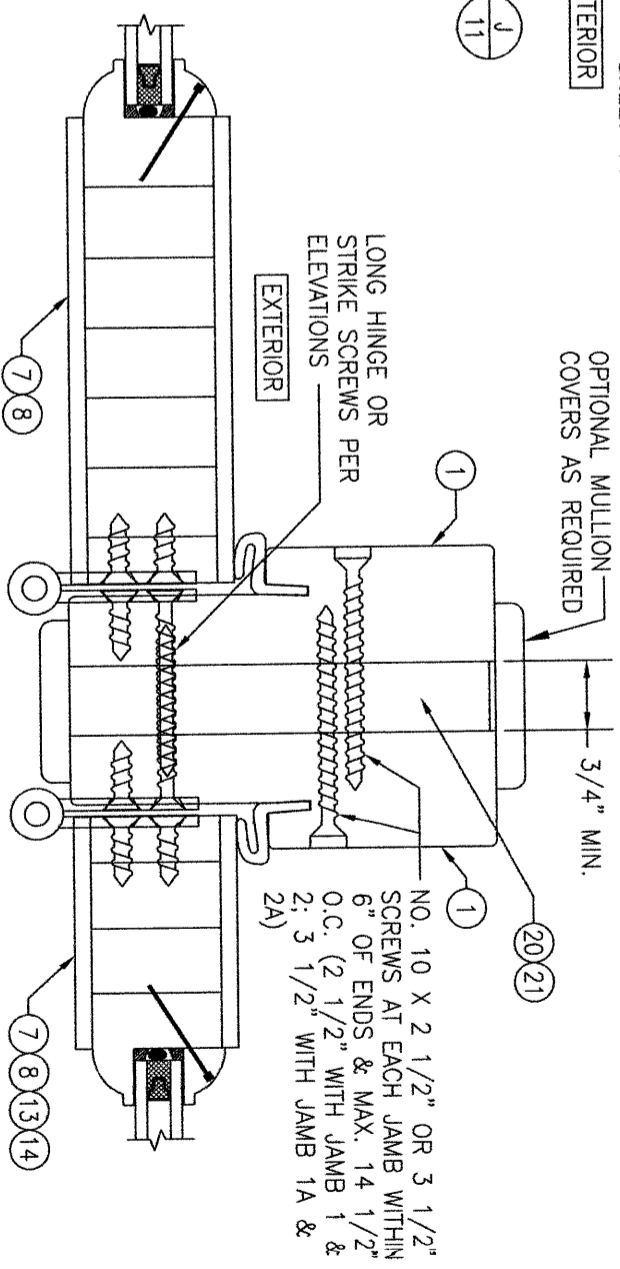
ALL SECTIONS ARE SHOWN WITH STANDARD FRAME SCREW MOUNT CONDITION. SEE DETAIL ON SHEET 13 FOR ALTERNATE DIRECT MOUNT DETAIL.



(FIXED SIDELITE TO ACTIVE DOOR)  
(FOR DETAIL NOT SHOWN, SEE OTHER SECTIONS)



(FIXED SIDELITE TO ACTIVE DOOR)  
(FOR DETAIL NOT SHOWN, SEE OTHER SECTIONS)



(ACTIVE DOOR TO ACTIVE DOOR OR ACTIVE SIDELITE)  
(FOR DETAIL NOT SHOWN, SEE OTHER SECTIONS)

NO.	REVISION	DESCRIPTION	BY	DATE

**DRAWING TITLE**  
8 FT. NON-IMPACT OUT-SWING WOOD DOORS

**CONSULTANTS**  
W. W. SCHAEFER ENGINEERING & CONSULTING, P.A.  
26376 NADIR ROAD; UNIT 309  
PUNTA GORDA, FL 33983  
PHONE: 561-744-3424

**MANUFACTURER**  
SIGNATURE DOOR INC.  
401 PRIORITY STREET  
ALTOONA, PA 16602  
814-949-2770

**CERTIFICATION**  
WARREN W. SCHAEFER, P.E.  
P.E. NO. 44135

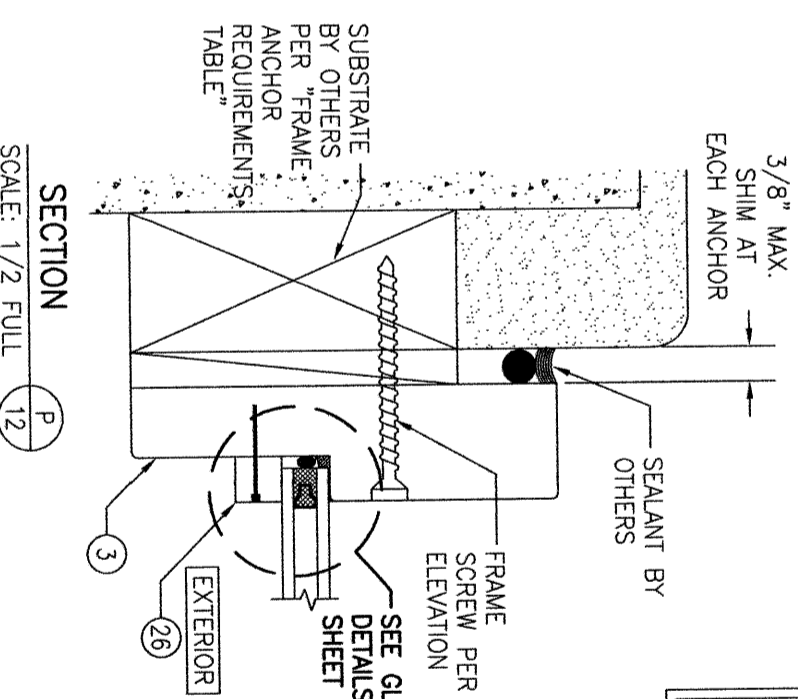
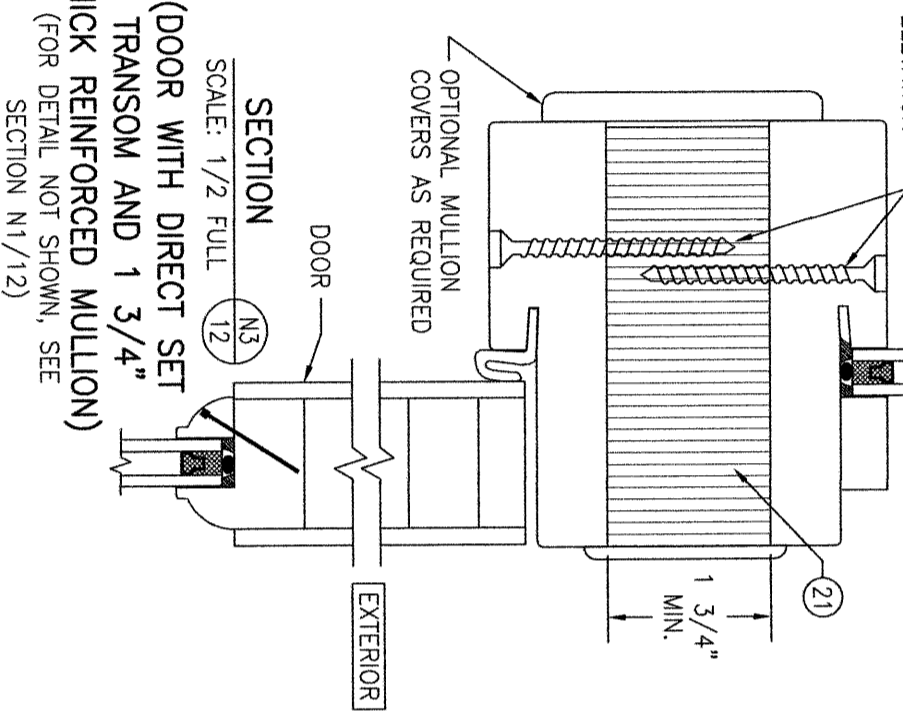
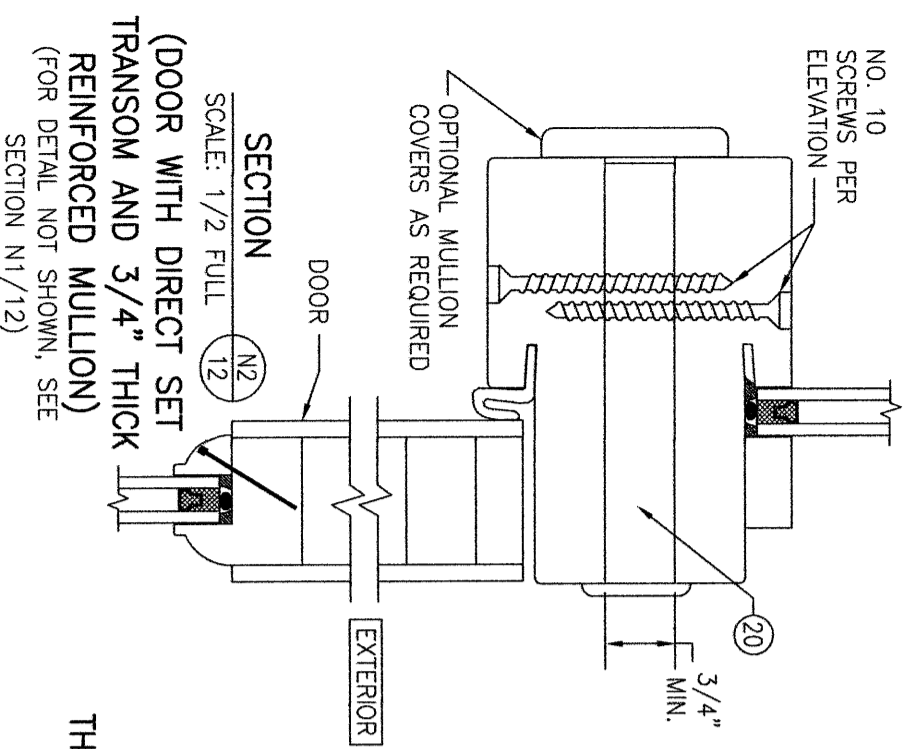
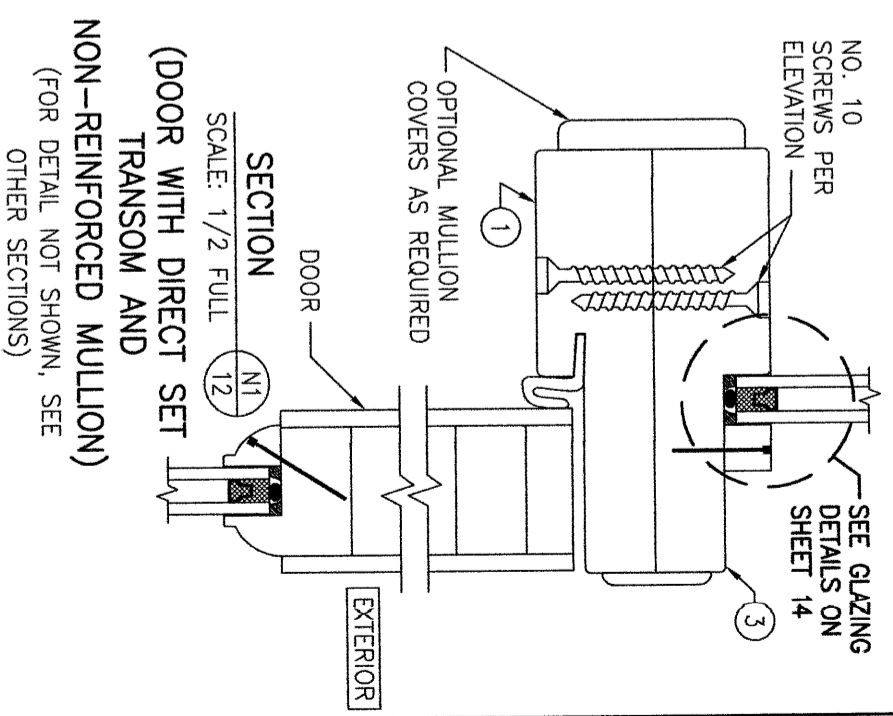
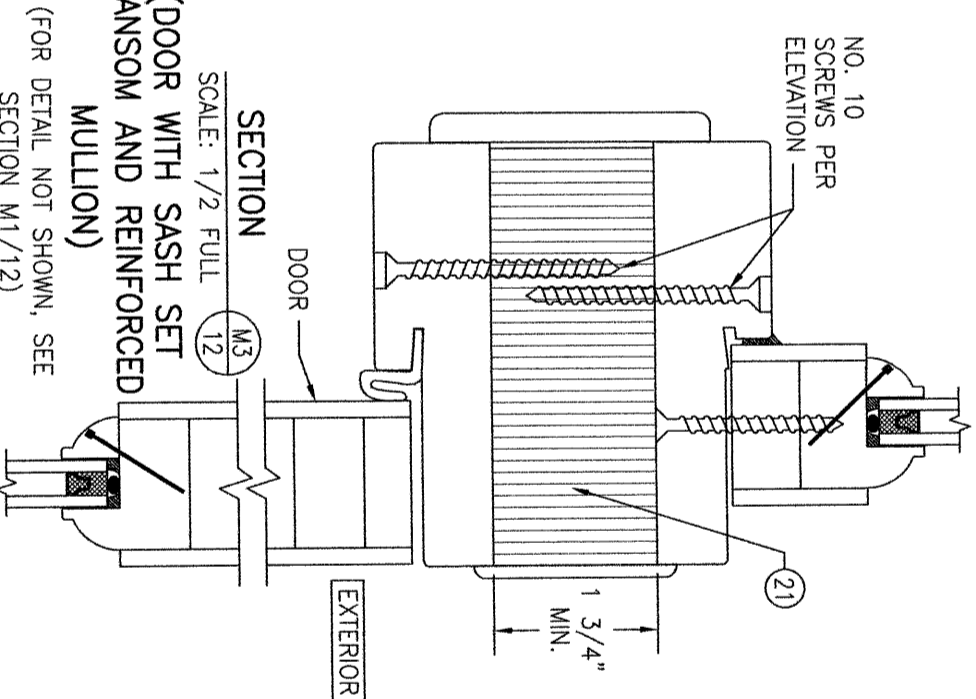
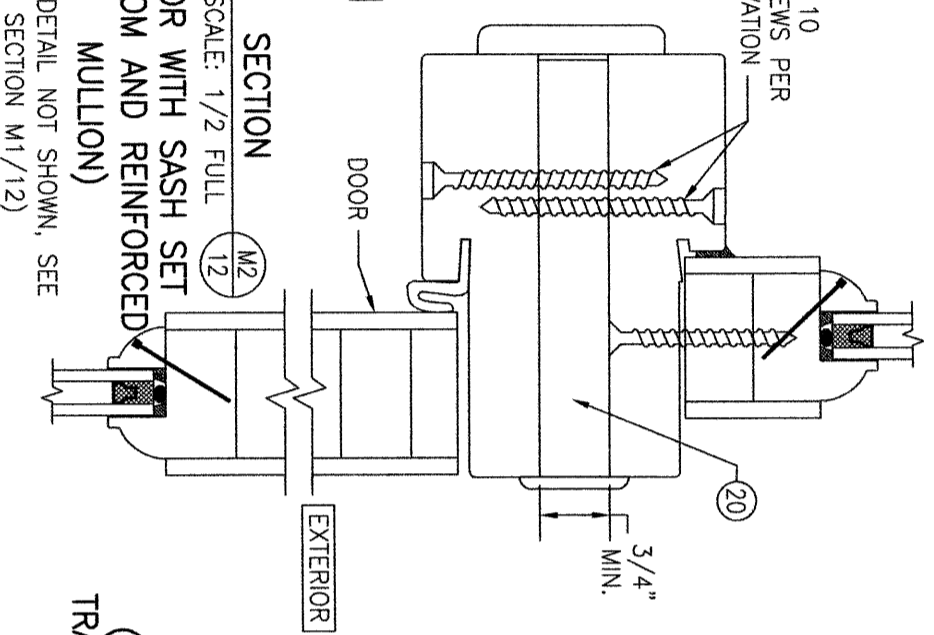
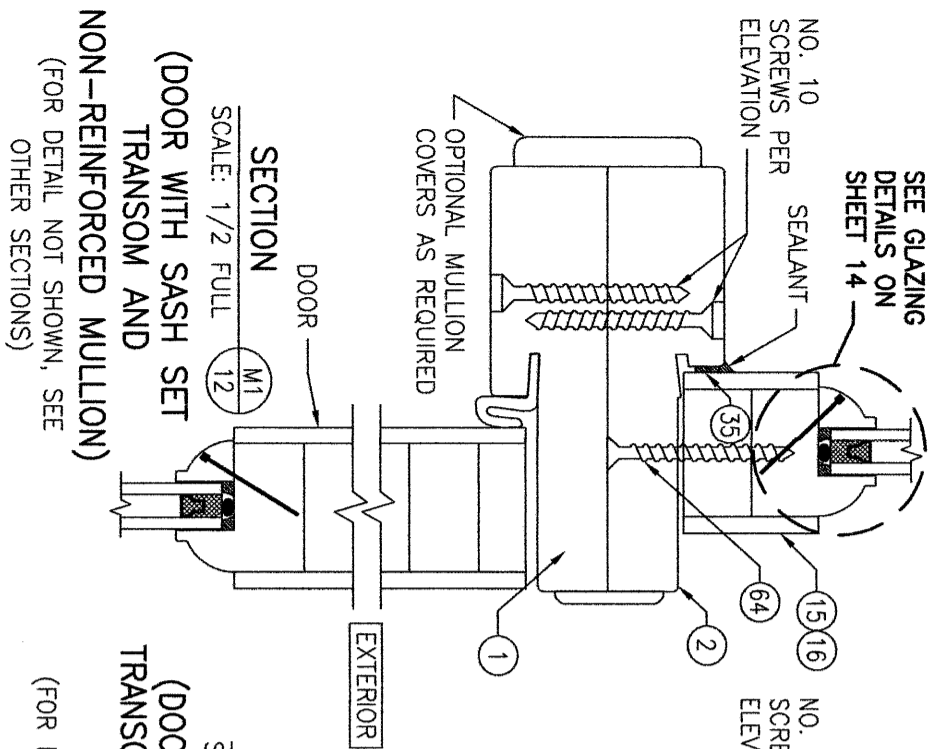
**DRAWING NO.**  
1899

**REV.**  
C

**SHEET NO.**  
11 OF 16

DRAWN BY: W.W.S.  
CHECKED BY: W.W.S.  
DATE: 09/12/15

SEE GLAZING  
DETAILS ON  
SHEET 14



ALL SECTIONS ARE SHOWN WITH RECESSED MOLDING GLAZING POCKETS. APPLIED MOLDING ALSO APPLIES.

ALL SECTIONS ARE SHOWN WITH STANDARD FRAME SCREW MOUNT CONDITION. SEE DETAIL ON SHEET 13 FOR ALTERNATE DIRECT MOUNT DETAIL.

NO.	REVISION	DESCRIPTION	BY	DATE
1-2				08/12/15

**DRAWING TITLE**  
8 FT. NON-IMPACT OUT-SWING WOOD DOORS

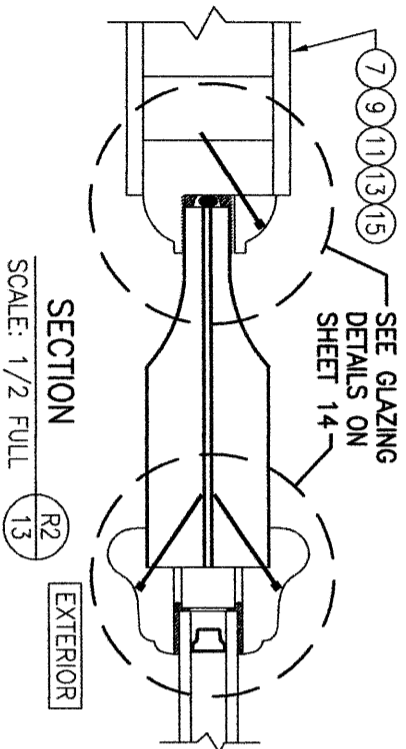
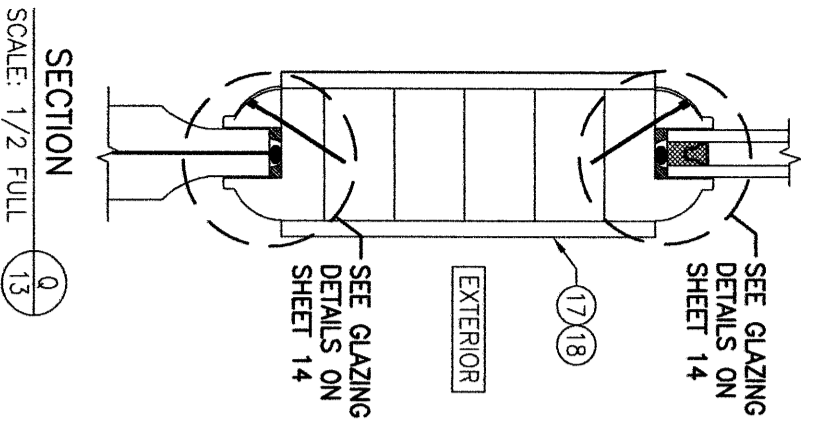
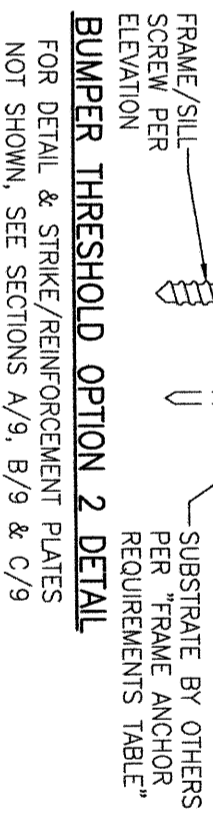
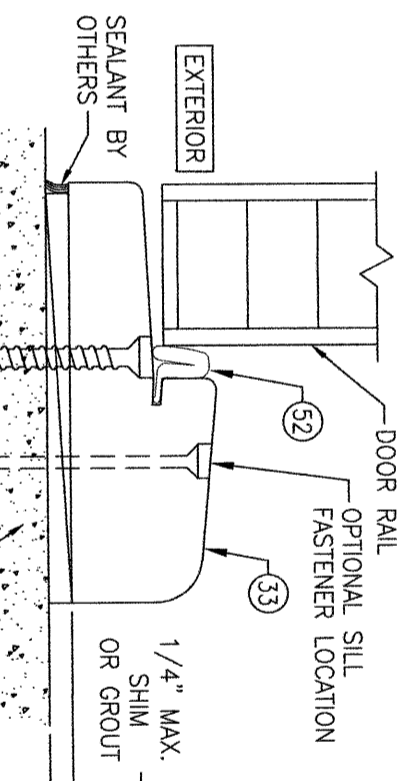
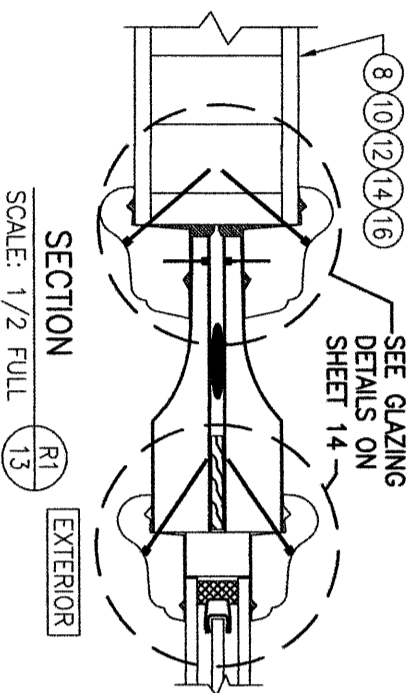
**CONSULTANTS**  
W. W. SCHAEFER ENGINEERING & CONSULTING, P.A.  
26376 NADIR ROAD; UNIT 309  
PUNTA GORDA, FL 33983  
PHONE: 561-744-3424

**MANUFACTURER**  
SIGNATURE DOOR INC.  
401 PRIORITY STREET  
ALTOONA, PA 16602  
814-949-2770

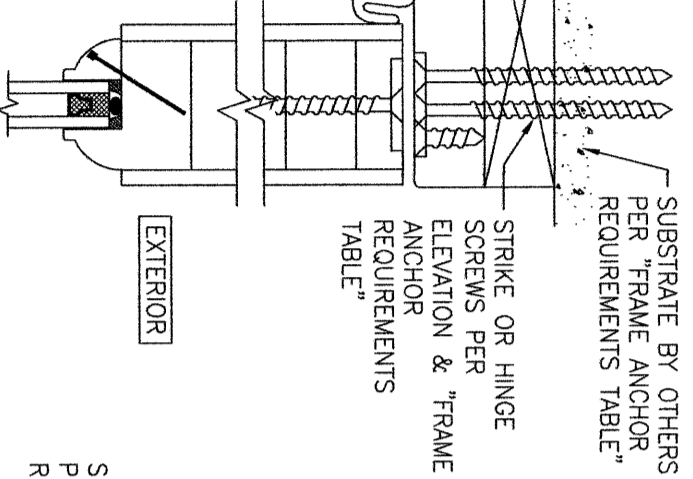
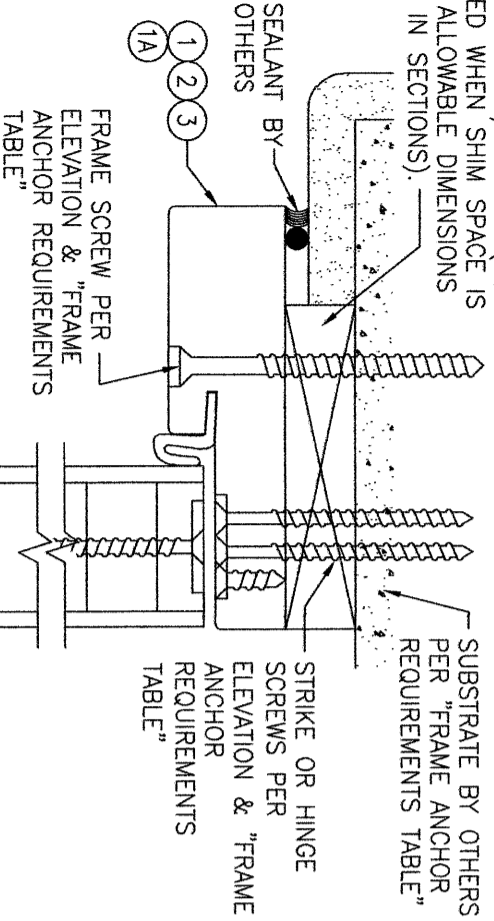
**CERTIFICATION**  
WARREN W. SCHAEFER, P.E.  
P.E. NO. 44135

**DRAWING NO.**  
1899  
REV. C

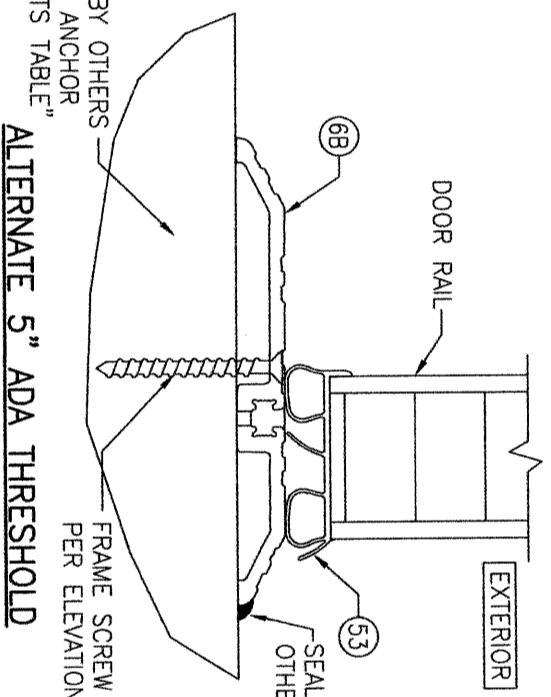
**SHEET NO.**  
12 OF 16



CONTINUOUS WOOD MEMBER LESS IN THICKNESS THAN A 2X BUCK TO BE MIN. 3 1/2" DEEP (NOT REQUIRED WHEN SHIM SPACE IS WITHIN ALLOWABLE DIMENSIONS SHOWN IN SECTIONS).

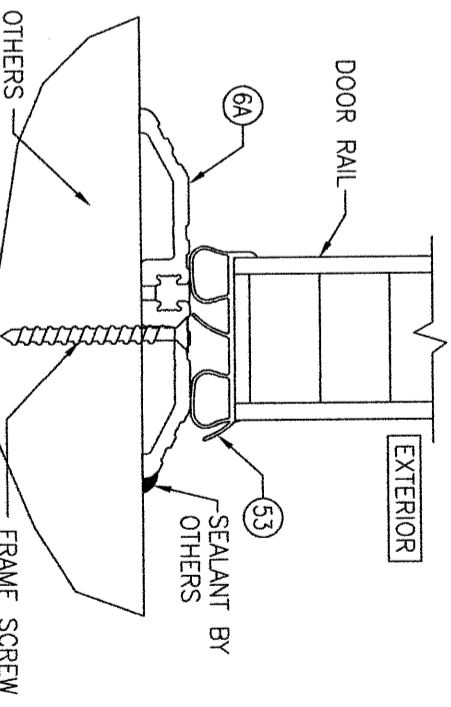


SEALANT BY OTHERS  
FRAME/SILL SCREW PER ELEVATION  
SUBSTRATE BY OTHERS PER "FRAME ANCHOR REQUIREMENTS TABLE"



**ALTERNATE 5" ADA THRESHOLD OPTION 4**  
(MAY REPLACE ADJUSTABLE THRESHOLD SHOWN IN ALL SECTIONS)

SEALANT BY OTHERS  
FRAME/SILL SCREW PER ELEVATION  
SUBSTRATE BY OTHERS PER "FRAME ANCHOR REQUIREMENTS TABLE"



**ALTERNATE 4" ADA THRESHOLD OPTION 3**  
(MAY REPLACE ADJUSTABLE THRESHOLD SHOWN IN ALL SECTIONS)

**ADA THRESHOLD OPTION 3 & 4 NOTES (4" & 5" THRESHOLDS):**  
1. WHEN AN ADA THRESHOLD IS USED, SILL LOCK STRIKES ARE NOT NECESSARY & LOCK BOLTS SHALL STRIKE DIRECTLY INTO THE THRESHOLD. LONG STRIKE SCREWS SPECIFIED IN THE ELEVATIONS SHALL BE REPLACED WITH 2 ADDITIONAL FRAME/SILL ANCHORS SUCH THAT A TOTAL OF 4 ANCHORS EXIST POSITIONED 3" & 6" OFF EACH SIDE OF THE MEETING STILE CENTERLINE.

OPTIONAL DIRECT MOUNT DETAIL TO SUBSTRATE WITH SPACER  
(HEAD SECTION SHOWN; SILL & SIDES ARE INSTALLED THE SAME)  
(DIRECT MOUNT CONDITION IS NOT APPLICABLE AT SILL)  
(FOR DETAIL NOT SHOWN, SEE OTHER SECTIONS)

NO.	REVISION DESCRIPTION	BY	DATE

DRAWING TITLE  
**8 FT. NON-IMPACT OUT-SWING WOOD DOORS**

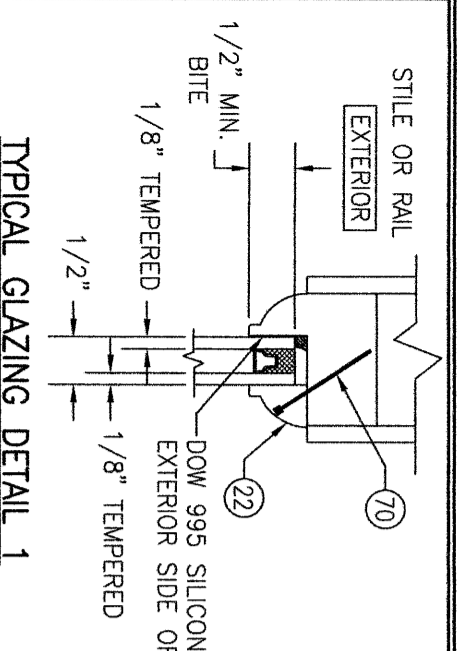
CONSULTANTS  
**W. W. SCHAEFER ENGINEERING & CONSULTING, P.A.**  
26376 NADIR ROAD; UNIT 309  
PUNTA GORDA, FL 33983  
PHONE: 561-744-3424

MANUFACTURER  
**SIGNATURE DOOR INC.**  
401 PRIORITY STREET  
ALTOONA, PA 16602  
814-949-2770

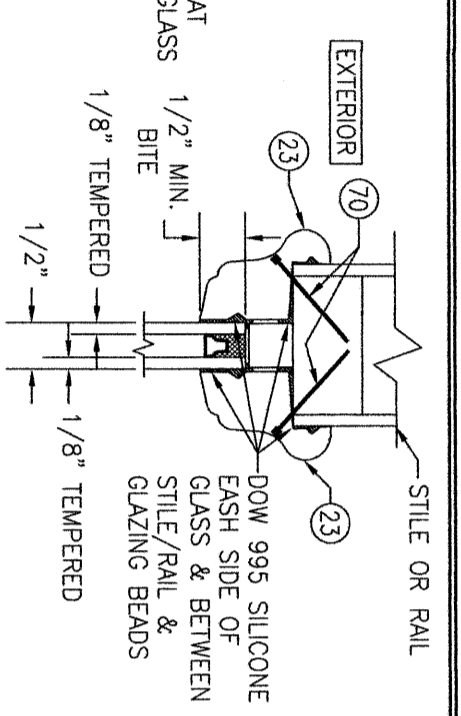
CERTIFICATION  
WARREN W. SCHAEFER, P.E.  
P.E. NO. 44135

DRAWING NO. 1899  
REV. C  
SHEET NO. 13 OF 16

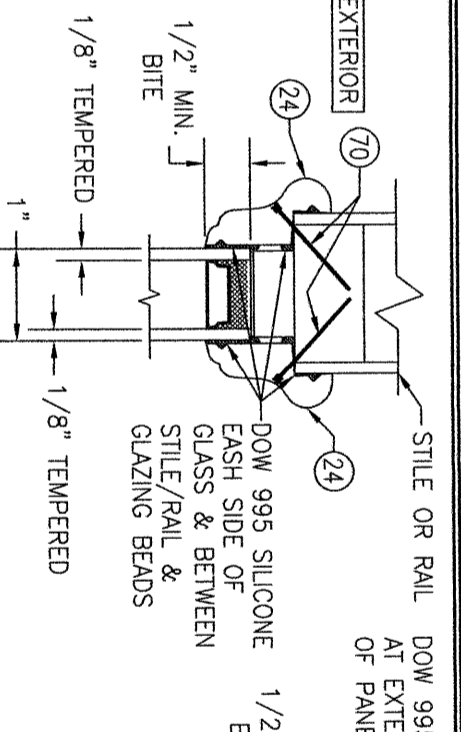
DRAWN BY: W.W.S.  
CHECKED BY: W.W.S.  
DATE: 09/12/15



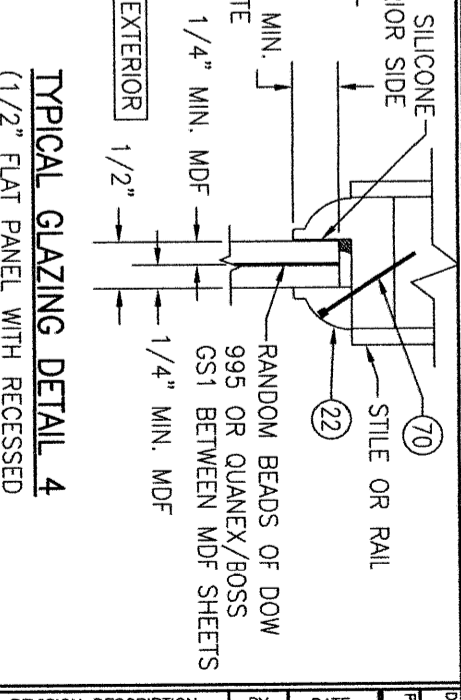
**TYPICAL GLAZING DETAIL 1**  
 (1/2" I.G. GLASS IN PANEL WITH RECESSED MOLDING)



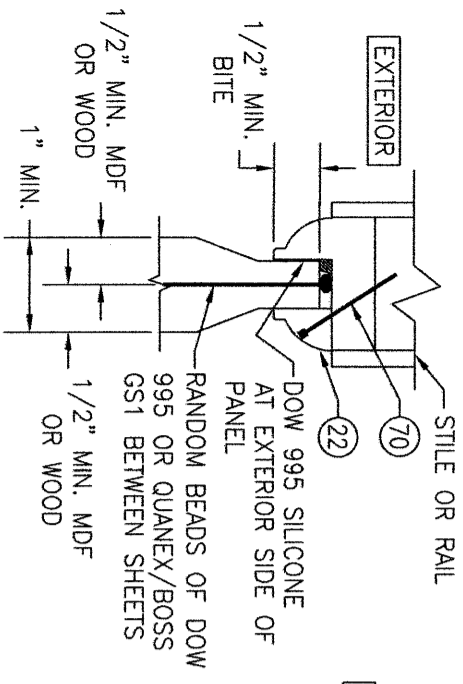
**TYPICAL GLAZING DETAIL 2**  
 (1/2" I.G. GLASS IN PANEL WITH APPLIED MOLDING)



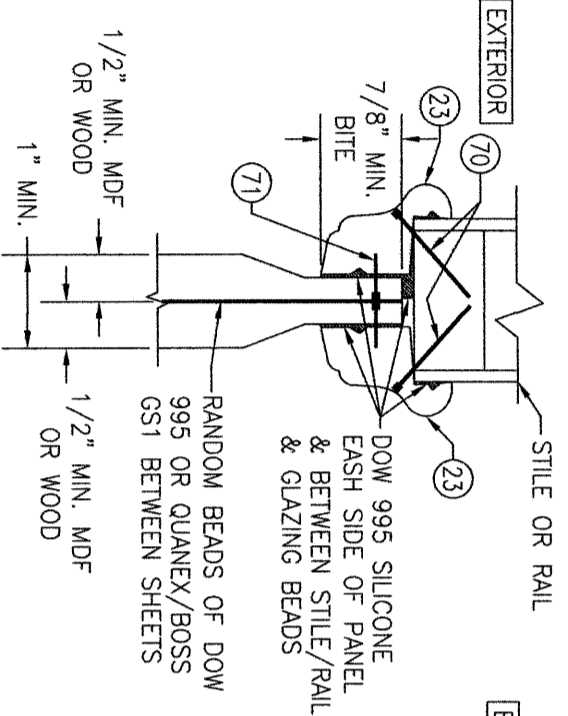
**TYPICAL GLAZING DETAIL 3**  
 (1" I.G. GLASS IN PANEL WITH APPLIED MOLDING) (INSERTION OF DECO GLASS MAY APPLY)



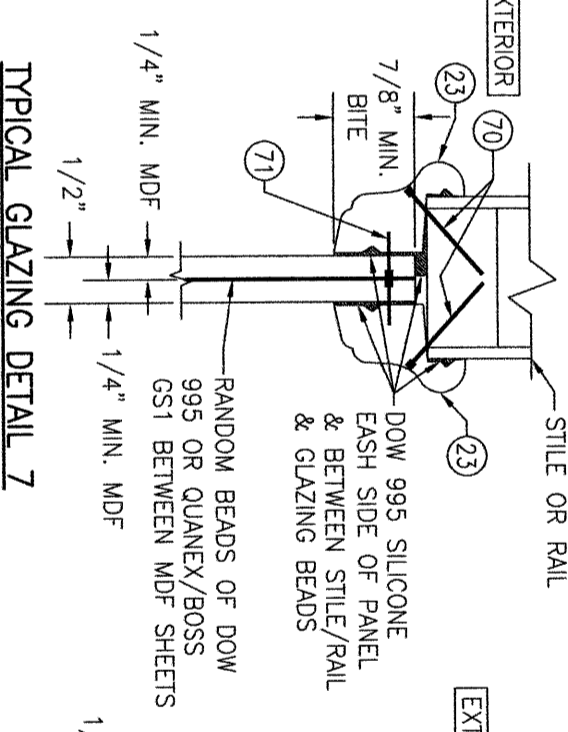
**TYPICAL GLAZING DETAIL 4**  
 (1/2" FLAT PANEL WITH RECESSED MOLDING)  
 NOTE: EXPOSED SURFACE AREA OF 1/2" FLAT PANEL BETWEEN STILES AND RAILS MAY NOT EXCEED 600 SQ. INCHES.



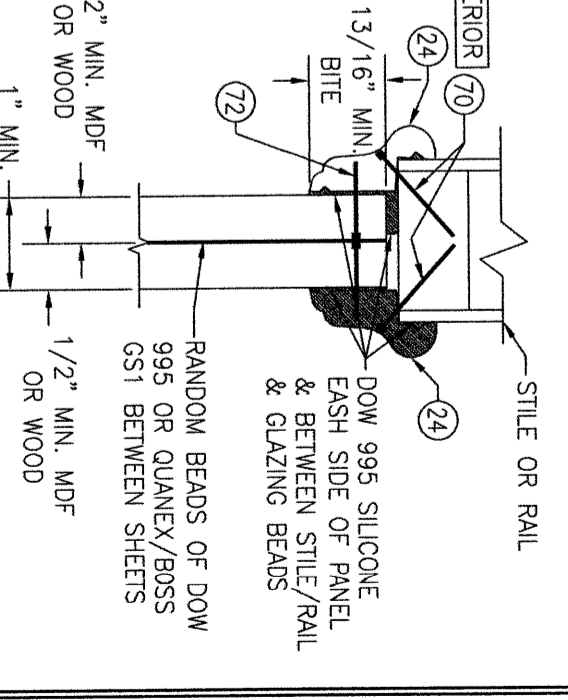
**TYPICAL GLAZING DETAIL 5**  
 (RAISED PANEL WITH RECESSED MOLDING)



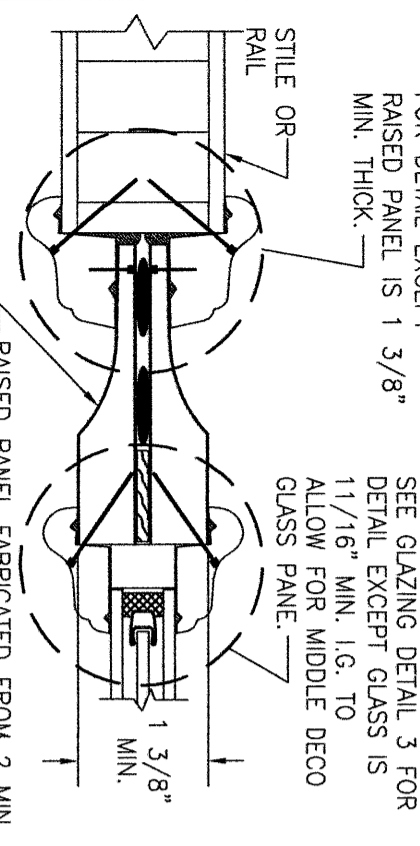
**TYPICAL GLAZING DETAIL 6**  
 (RAISED PANEL WITH APPLIED MOLDING)



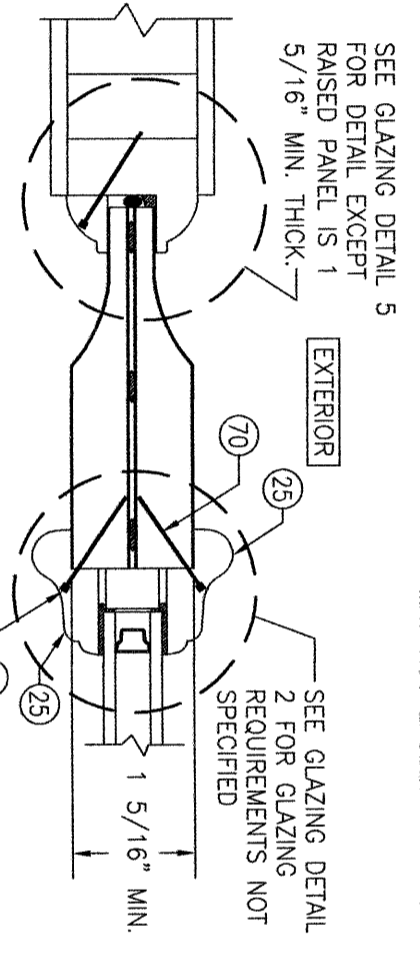
**TYPICAL GLAZING DETAIL 7**  
 (1/2" FLAT PANEL WITH APPLIED MOLDING)  
 NOTE: EXPOSED SURFACE AREA OF 1/2" FLAT PANEL BETWEEN STILES AND RAILS MAY NOT EXCEED 600 SQ. INCHES.



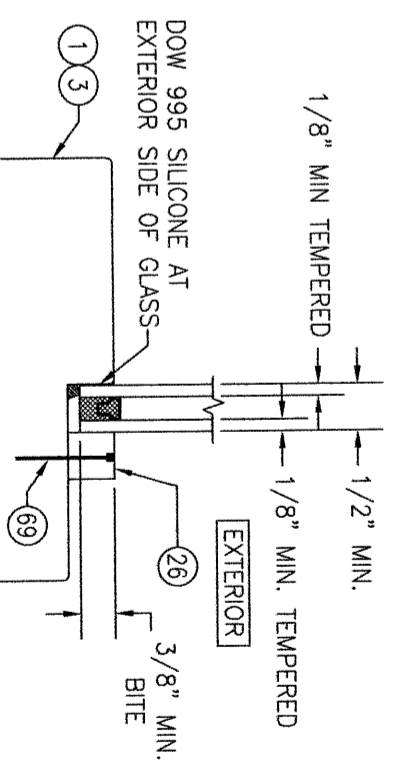
**TYPICAL GLAZING DETAIL 8**  
 (1" FLAT PANEL WITH APPLIED MOLDING)



**TYPICAL GLAZING DETAIL 9**  
 (RAISED PANEL WITH GLASS CUT-OUT IN DOOR WITH APPLIED MOLDING)



**TYPICAL GLAZING DETAIL 10**  
 (RAISED PANEL WITH GLASS CUT-OUT IN DOOR WITH RECESSED MOLDING)



**TYPICAL GLAZING DETAIL 11**  
 (DIRECT GLAZE TRANSOM)

NO.	REVISION DESCRIPTION	BY	DATE

DRAWING TITLE  
**8 FT. NON-IMPACT OUT-SWING WOOD DOORS**

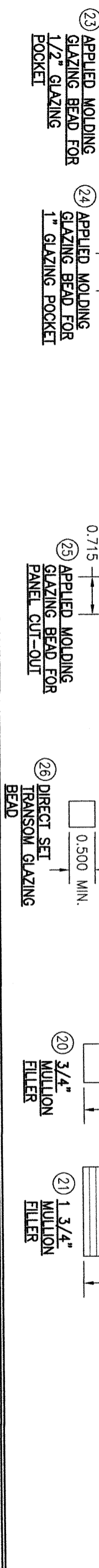
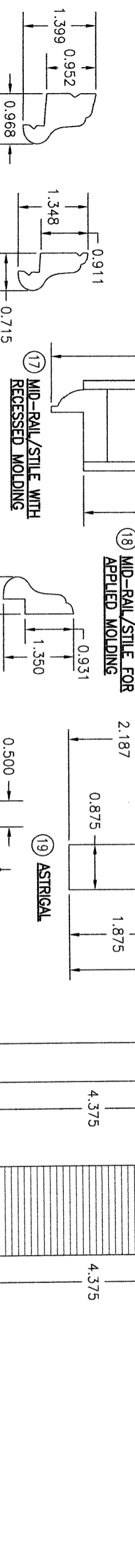
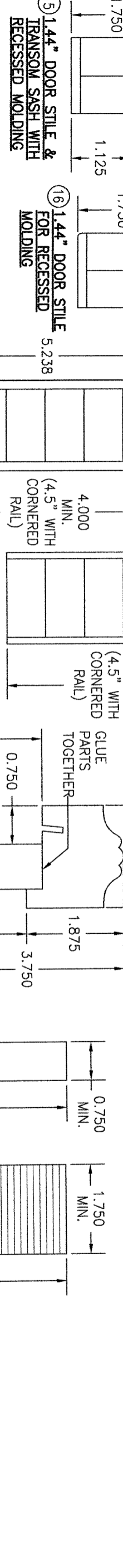
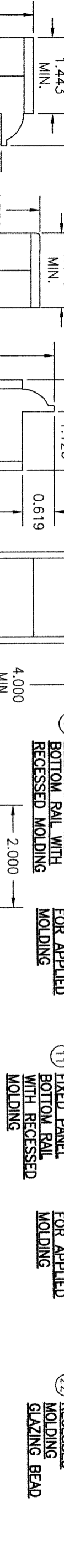
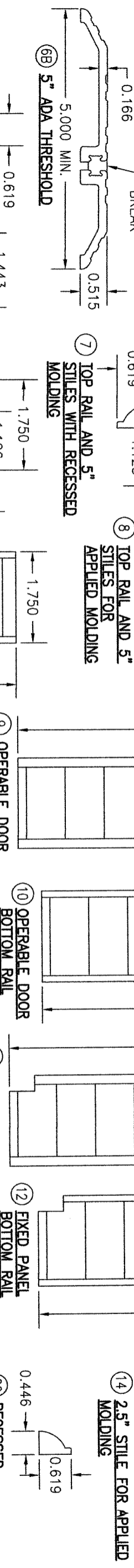
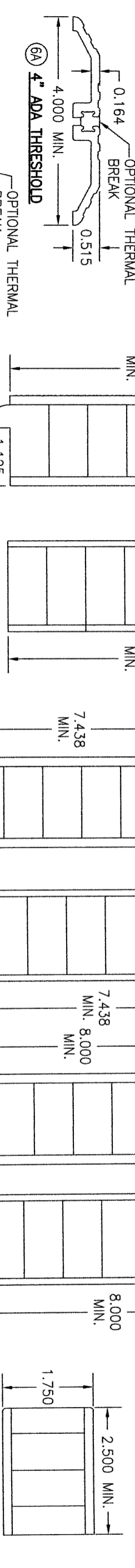
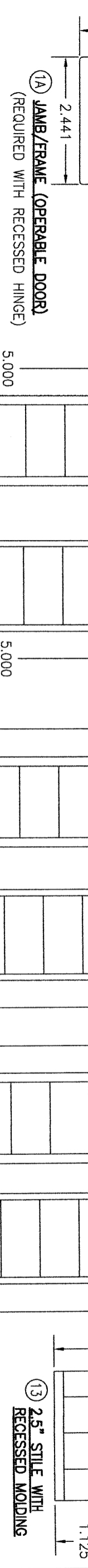
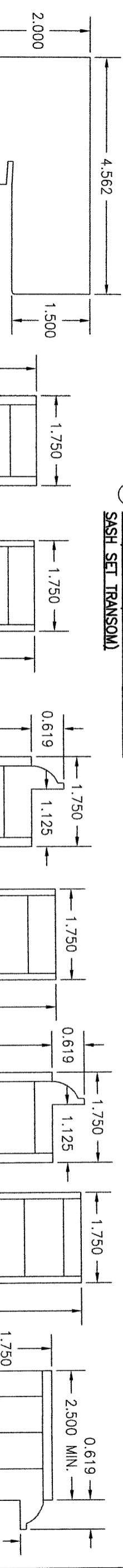
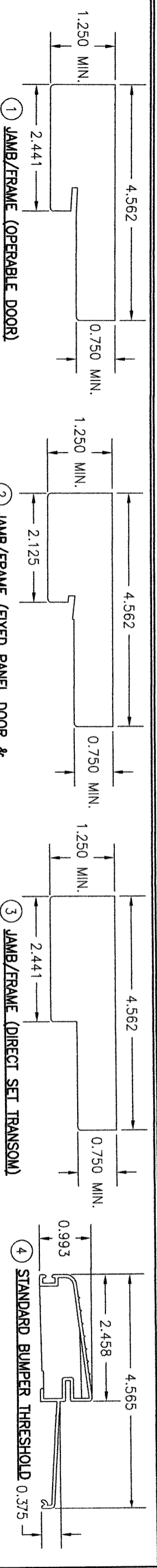
CONSULTANTS  
**W. W. SCHAEFER ENGINEERING & CONSULTING, P.A.**  
 26376 NADIR ROAD; UNIT 309  
 PUNTA GORDA, FL 33983  
 PHONE: 561-744-3424

MANUFACTURER  
**SIGNATURE DOOR INC.**  
 401 PRIORITY STREET  
 ALTOONA, PA 16602  
 814-949-2770

CERTIFICATION  
**WARREN W. SCHAEFER, P.E.**  
 P.E. NO. 44135

DRAWING NO. **1899** REV. **C**

SHEET NO. **14** OF **16**



NO.	REVISION DESCRIPTION	BY	DATE

DRAWING TITLE  
**8 FT. NON-IMPACT OUT-SWING WOOD DOORS**

CONSULTANTS  
**W. W. SCHAEFER ENGINEERING & CONSULTING, P.A.**  
 26376 NADIR ROAD; UNIT 309  
 PUNTA GORDA, FL 33983  
 PHONE: 561-744-3424

MANUFACTURER  
**SIGNATURE DOOR INC.**  
 401 PRIORITY STREET  
 ALTOONA, PA 16602  
 814-949-2770

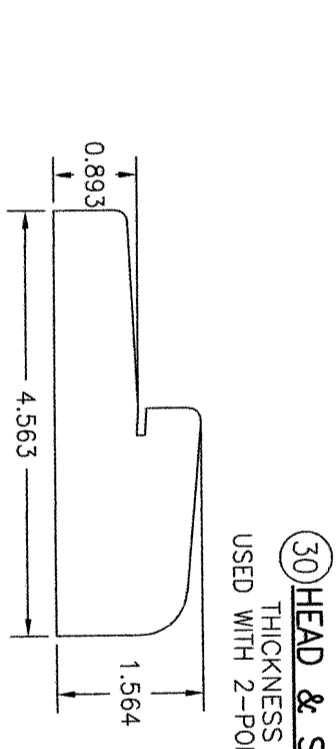
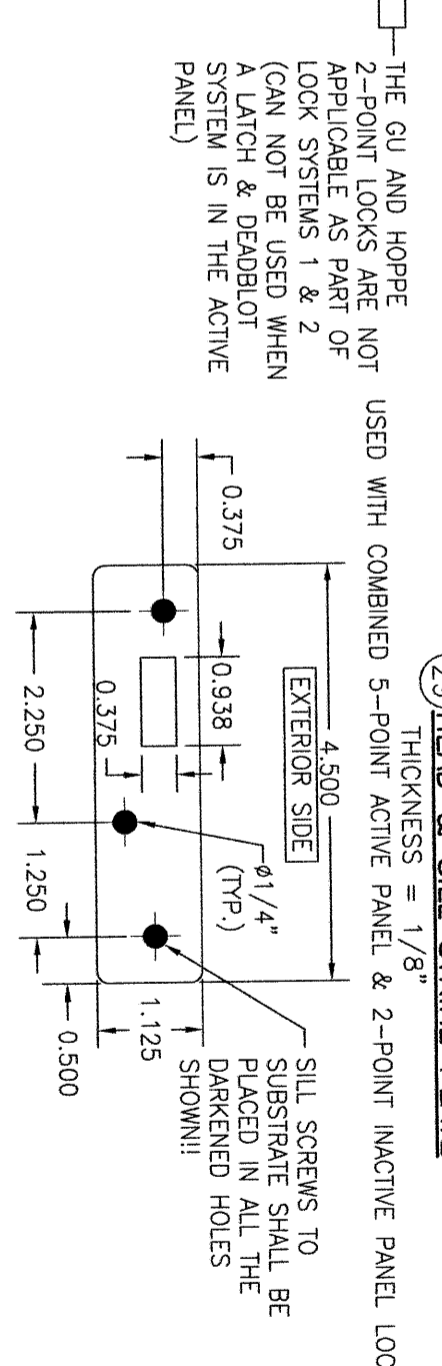
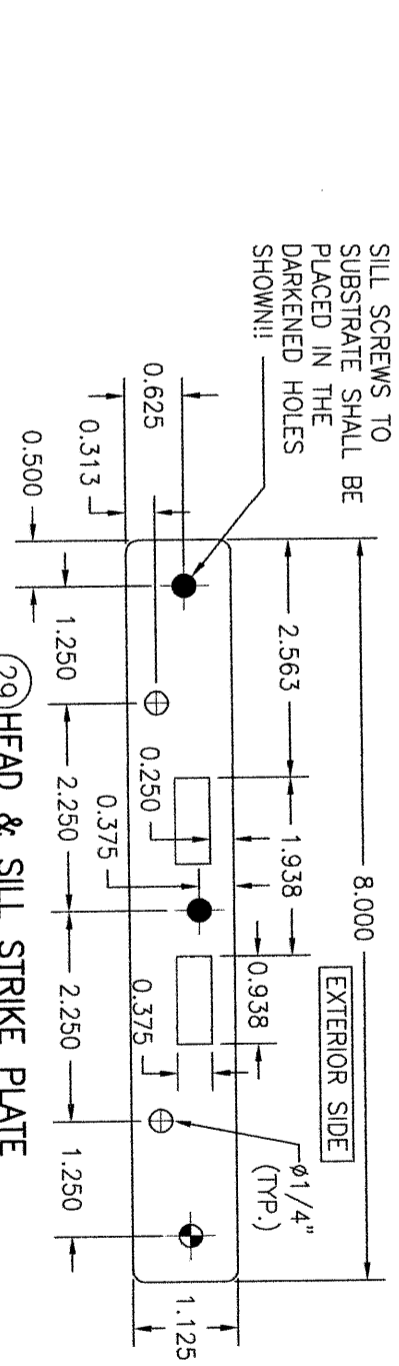
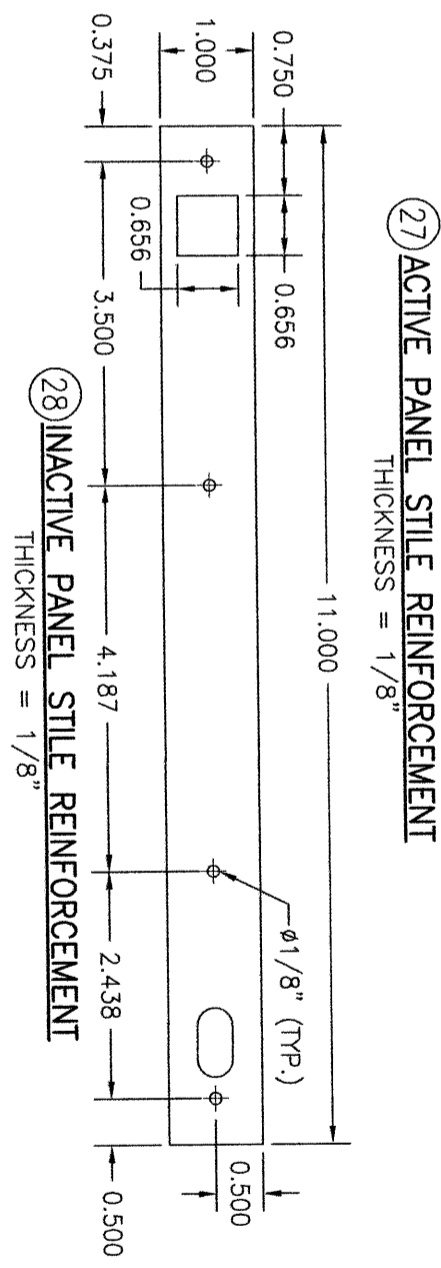
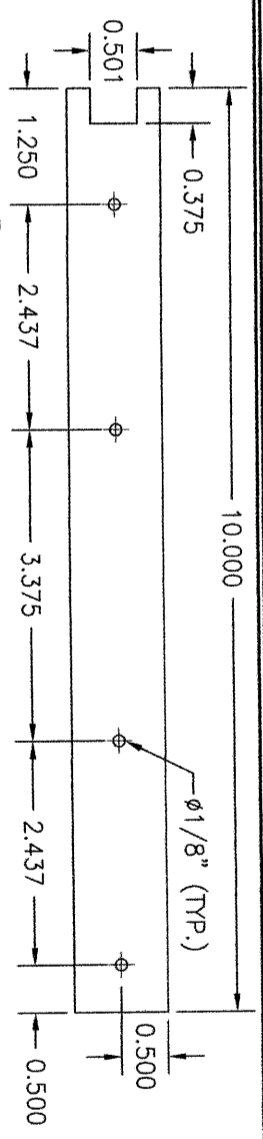
CERTIFICATION  
 WARREN W. SCHAEFER, P.E.  
 P.E. NO. 44135

DRAWING NO. **1899**  
 REV. **C**

SHEET NO. **15** OF **16**

ITEM #	ITEM DESCRIPTION	PARTS	MANUFACTURER/NOTES
1	JAMB/F/RAME (OPERABLE DOOR)		SOLID OR FINGER JOINTED WOOD (LAMINATED WITH CURVED JAMB)
1A	JAMB/F/RAME (REQUIRED WITH RECESSED HINGES)		SOLID OR FINGER JOINTED WOOD (LAMINATED WITH CURVED JAMB)
2	JAMB/F/RAME (FIXED PANEL DOOR & SASH SET TRANSOM)		SOLID OR FINGER JOINTED WOOD (LAMINATED WITH CURVED JAMB)
3	JAMB/F/RAME (DIRECT SET TRANSOM)		SOLID OR FINGER JOINTED WOOD (LAMINATED WITH CURVED JAMB)
4	STANDARD BLIMPERS THRESHOLD		ALUMINUM WITH WOOD INSERT
6A	4" ADA THRESHOLD		ALUMINUM
6B	5" ADA THRESHOLD		ALUMINUM
7	TOP RAILS & 5" STILES WITH RECESSED MOLDING		LVL OR LAMINATED RED OAK CORE (PINE VENEER)
8	TOP RAILS & 5" STILES FOR APPLIED MOLDING		LVL OR LAMINATED RED OAK CORE (PINE VENEER)
9	OPERABLE DOOR BOTTOM RAIL WITH RECESSED MOLDING		LVL OR LAMINATED RED OAK CORE (PINE VENEER)
10	OPERABLE DOOR BOTTOM RAIL FOR APPLIED MOLDING		LVL OR LAMINATED RED OAK CORE (PINE VENEER)
11	FIXED PANEL BOTTOM RAIL WITH RECESSED MOLDING		LVL OR LAMINATED RED OAK CORE (PINE VENEER)
12	FIXED PANEL BOTTOM RAIL FOR APPLIED MOLDING		LVL OR LAMINATED RED OAK CORE (PINE VENEER)
13	2.5" STILE WITH RECESSED MOLDING		LVL OR LAMINATED RED OAK CORE (PINE VENEER)
14	2.5" STILE FOR APPLIED MOLDING		LVL OR LAMINATED RED OAK CORE (PINE VENEER)
15	1.44" STILE WITH RECESSED MOLDING		LVL OR LAMINATED RED OAK CORE (PINE VENEER)
16	1.44" STILE FOR APPLIED MOLDING		LVL OR LAMINATED RED OAK CORE (PINE VENEER)
17	MID-RAIL/STILE WITH RECESSED MOLDING		LVL OR LAMINATED RED OAK CORE (PINE VENEER)
18	MID-RAIL/STILE FOR APPLIED MOLDING		LVL OR LAMINATED RED OAK CORE (PINE VENEER)
19	ASTRIGAL		WOOD
20	3/4" MULLION FILLER		OAK
21	1 3/4" MULLION FILLER		LVL OR LAMINATED RED OAK CORE
22	RECESSED MOLDING GLAZING BEAD		WOOD
23	APPLIED MOLDING GLAZING BEAD FOR 1/2" GLAZING POCKET		WOOD
24	APPLIED MOLDING GLAZING BEAD FOR 1" GLAZING POCKET		WOOD
25	APPLIED MOLDING GLAZING BEAD FOR PANEL CUT-OUT		WOOD
26	DIRECT SET TRANSOM GLAZING BEAD		WOOD
27	ACTIVE PANEL STILE REINFORCEMENT (STAINLESS STEEL)		STAINLESS STEEL
28	INACTIVE PANEL STILE REINFORCEMENT		STAINLESS STEEL
29	HEAD & SILL STRIKE PLATE		STAINLESS STEEL
30	HEAD & SILL STRIKE PLATE		STAINLESS STEEL
32	LOCK SIDE STRIKE PLATE		AS SUPPLIED WITH LOCK SYSTEMS
33	WOOD THRESHOLD		WOOD
39	4" X 4" BUTT HINGE (STEEL, STAINLESS STEEL OR BRASS)		HARDWARE PENROD M15478 BALL BEARING OR BALDWIN 1041.150
40	LATCH & DEADBOLT		OPTION A: SCHLAGE F10 KNOB & B60N DEADBOLT OPTION B: KWIKSET SIGNATURE SERIES KNOB & 980 DEADBOLT OPTION C: WESLOCK TRADITIONALE KNOB & 671 DEADBOLT
41	RECESSED HINGE		TECTUS TE340
42	2-POINT INACTIVE PANEL LOCK SYSTEM		OPTION A: TRUTH SENTRY LEVER ACTIVATED OPTION B: HOPPE HLS9000 HANDLE OR LEVER ACTIVATED OPTION C: GU EUROPA HANDLE ACTIVATED
43	5-POINT ACTIVE PANEL LOCK SYSTEM		OPTION A: TRUTH SENTRY TONGUE OPTION B: HOPPE HLS9000 OPTION C: GU RHINO
44	3-POINT ACTIVE PANEL LOCK SYSTEM		OPTION A: TRUTH SENTRY TONGUE OPTION B: HOPPE HLS9000 OPTION C: GU RHINO
45	LATCH & MULTI-POINT ACTIVE PANEL LOCK SYSTEM PLUS IVES SB453-TB SURFACE BOLTS		AMESBURY TRUTH TRU-LOCK (SURFACE BOLTS NOT REQUIRED WITH SINGLE PANEL DOORS)
52	WEATHERSTRIP	SEALS & SEALANTS	FENSEAL DSFC-650K162-PF588 OR LAUREN DOOR SEALS PART #103257
53	DOOR SWEEP		IMPERIAL FBS308/FBS36B PVC
55	1/16" X 1/4" SINGLE SIDED GLAZING TAPE		FOAM
62	NO. 8 X 3/4" WOOD OR SMS SCREW	FASTENERS	2 PER LOCK STRIKE PART NO. 29
63	NO. 10 X 2" PFH SMS SCREW		4 PER REINFORCEMENT PLATE
64	NO. 8 X 2" DRYWALL SCREW		WITHIN 6" OF CORNERS AND 16" MAX. O.C.
65	NO. 8 X 1 1/2" PFH WOOD OR SMS SCREW		2 PER JAMB SIDE LEAF: 4 PER PANEL SIDE LEAF
66	NO. 8 X 3/4" PFH WOOD OR SMS SCREW		2 PER JAMB SIDE LEAF: 4 PER PANEL SIDE LEAF
67	NO. 10 X 2 1/2" PFH WOOD OR SMS SCREW		3" FROM ENDS AND MAX. 22" O.C. (2 ROWS)
69	18 GAGE X 1 1/8" BRAD NAIL		WITHIN 2" OF CORNERS AND 8" MAX. O.C.
70	18 GAGE X 1 1/8" BRAD NAIL		WITHIN 2" OF CORNERS AND 8" MAX. O.C.
71	18 GAGE X 1/2" BRAD NAIL		WITHIN 1 1/2" OF CORNERS AND 5" MAX. O.C.
72	18 GAGE X 3/4" BRAD NAIL		WITHIN 1 1/2" OF CORNERS AND 5" MAX. O.C.
73	NO. 10 X 2 1/2" PFH WOOD OR SMS SCREW		2 PER LOCK STRIKE PLATE

NOTE: SOLID WOOD MEMBERS USED IN TESTING WERE EASTERN WHITE PINE WITH A SPECIFIC GRAVITY OF G = 0.36 AND A MODULUS OF ELASTICITY OF E = 1,200,000 PSI. OTHER WOOD SPECIES APPLICABLE FOR USE WITH THIS PRODUCT ARE THOSE WITH A SPECIFIC GRAVITY OF 0.36 AND MODULUS OF ELASTICITY OF 1,200,000 PSI OR GREATER. ALL WOOD IS MINIMUM GRADE 2 MILLED BY SIGNATURE DOOR, INC. TO SELECT.



THE GU AND HOPPE 2-POINT LOCKS ARE NOT APPLICABLE AS PART OF LOCK SYSTEMS 1 & 2 (CAN NOT BE USED WHEN A LATCH & DEADBOLT SYSTEM IS IN THE ACTIVE PANEL)

USED WITH COMBINED 5-POINT ACTIVE PANEL & 2-POINT INACTIVE PANEL LOCK SYSTEMS

THICKNESS = 1/8" USED WITH 2-POINT ONLY INACTIVE PANEL LOCK SYSTEMS

OPTIONAL WOOD THRESHOLD

NO.	REVISION	DESCRIPTION	BY	DATE
1				
2				

DRAWING TITLE  
**8 FT. NON-IMPACT OUT-SWING WOOD DOORS**

CONSULTANTS  
**W. W. SCHAEFER ENGINEERING & CONSULTING, P.A.**  
26376 NADIR ROAD; UNIT 309  
PUNTA GORDA, FL 33983  
PHONE: 561-744-3424

MANUFACTURER  
**SIGNATURE DOOR INC.**  
401 PRIORITY STREET  
ALTOONA, PA 16602  
814-949-2770

CERTIFICATION  
WARREN W. SCHAEFER, P.E.  
P.E. NO. 44135

DRAWING NO. 1899  
SHEET NO. 16 OF 16

DRAWN BY: W.W.S.  
CHECKED BY: W.W.S.  
DATE: 08/12/15