



**FLUSH GLAZED FIBERGLASS DOOR UNIT
8'-0" GLAZED DOUBLE DOOR WITH / WITHOUT SIDELITES**

GENERAL NOTES

- EVALUATED FOR USE IN LOCATIONS ADHERING TO THE FLORIDA BUILDING CODE AND WHERE PRESSURE REQUIREMENTS AS DETERMINED BY ASCE 7, MINIMUM DESIGN LOADS FOR BUILDINGS AND OTHER STRUCTURES, DOES NOT EXCEED THE DESIGN PRESSURES LISTED.
- WHEN INSTALLED IN THE HIGH VELOCITY HURRICANE ZONE (HVHZ), HURRICANE PROTECTIVE SYSTEM (SHUTTERS) IS REQUIRED.
- WHEN INSTALLED IN THE WIND-BORNE DEBRIS REGION, EXCLUDING THE HIGH VELOCITY HURRICANE ZONE (HVHZ), HURRICANE PROTECTIVE SYSTEM IS NOT REQUIRED ON PANELS WITH IMPACT GLASS, BUT IS REQUIRED ON PANELS WITH NON-IMPACT GLASS.
- POLYURETHANE CORE FLAME SPREAD INDEX OF 50 AND SMOKE DEVELOPED INDEX OF 60 PER ASTM E84. POLYSTYRENE CORE FLAME SPREAD INDEX OF 15 AND SMOKE DEVELOPED INDEX OF 115 PER ASTM E84.

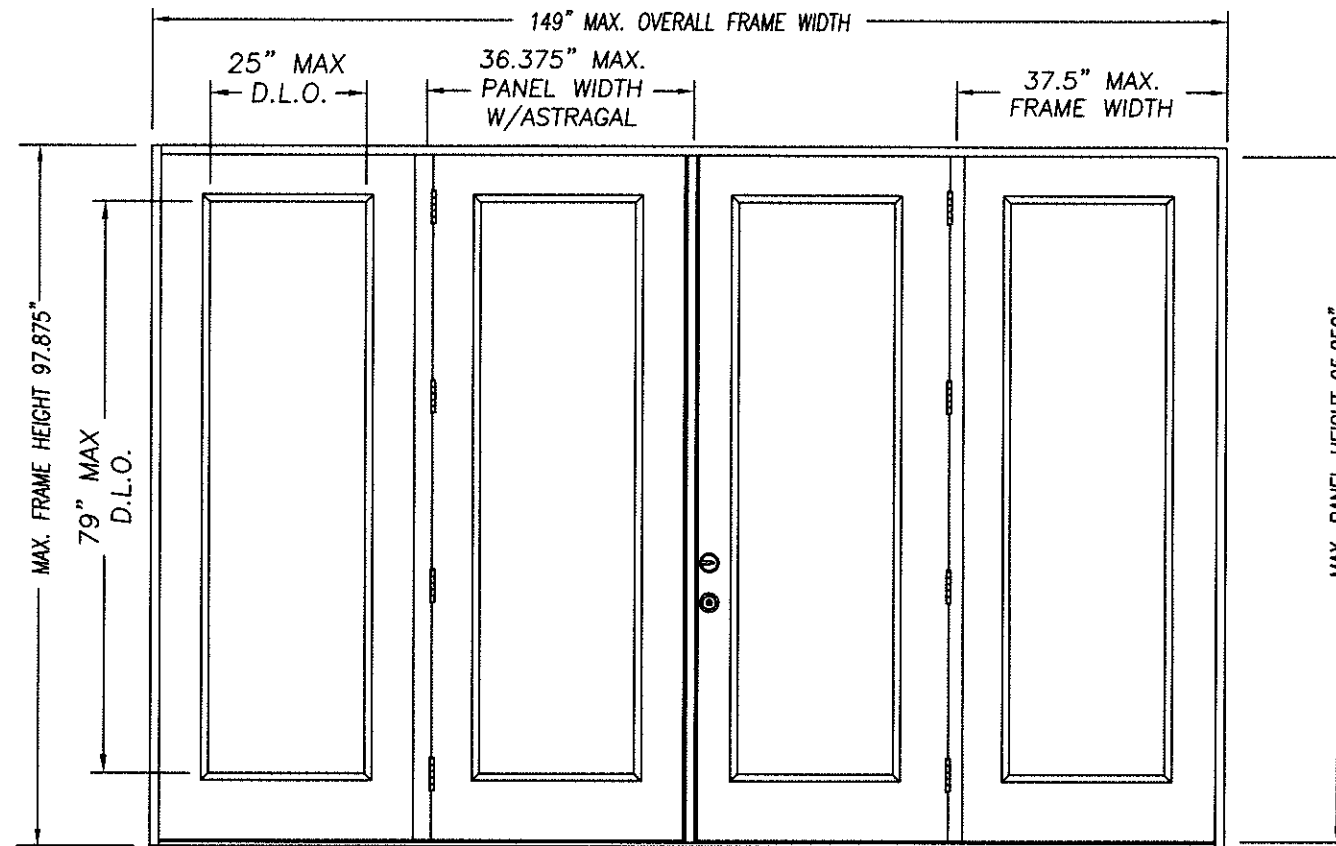
5. PLASTICS TESTING OF FIBERGLASS FACING:

TEST DESCRIPTION	DESIGNATION	RESULT
SELF IGNITION TEMP	ASTM D1929	752 °F > 650 °F
RATE OF BURNING	ASTM D635	0.56 IN/MIN
SMOKE DENSITY	ASTM D2843	53.4%
TENSILE STRENGTH*	ASTM D638	3.2% DIFF

6. PLASTICS TESTING OF LITE FRAME MATERIAL:

TEST DESCRIPTION	DESIGNATION	RESULT
SELF IGNITION TEMP	ASTM D1929	740 °F > 650 °F
RATE OF BURNING	ASTM D635	0.77 IN/MIN
SMOKE DENSITY	ASTM D2843	13.4%
TENSILE STRENGTH*	ASTM D638	-7.50% DIFF

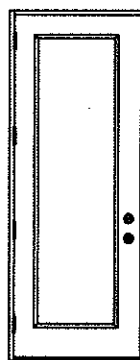
* COMPARATIVE TENSILE STRENGTH AFTER WEATHERING 4500 HOURS XENON ARC METHOD 1



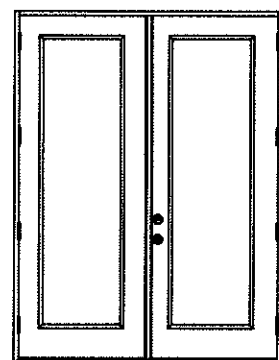
DOUBLE DOOR UNIT W/SIDELITES

Addendum to NAMI

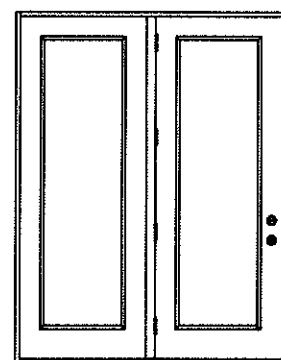
Certification No.: NF012729
Reviewed By: [Signature]
Date Reviewed: 9/10/15



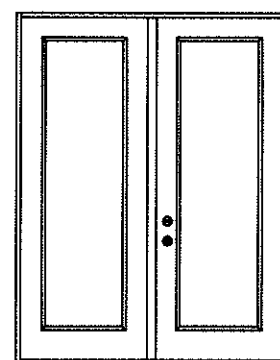
SINGLE DOOR UNIT



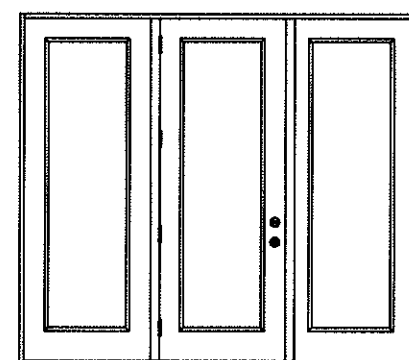
DOUBLE DOOR UNIT



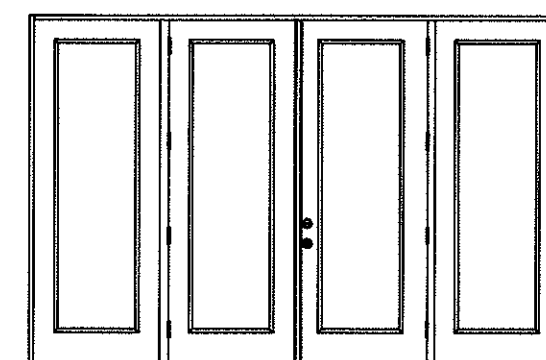
SINGLE DOOR UNIT WITH SIDELITE



SINGLE DOOR UNIT WITH SIDELITE



SINGLE DOOR UNIT W/SIDELITES



DOUBLE DOOR UNIT W/SIDELITES

TABLE OF CONTENTS	
SHEET #	DESCRIPTION
1	TYPICAL ELEVATIONS & GENERAL NOTES
2	ANCHORING LOCATIONS & DETAILS
3	ANCHORING LOCATIONS & DETAILS

CONFIG	MAX WIDTH	DESIGN PRESSURE RATING		WHERE WATER INFILTRATION PERFORMANCE IS REQUIRED TO BE 15% OF DESIGN PRESSURE		
		INSWING	OUTSWING	BUMPER O/S	Z-SERIES O/S	HI DAM O/S
X	37.5"	+45.0 / -47.0	+47.0 / -47.0	+35.0 / -35.0	+40.0 / -40.0	+47.0 / -47.0
XX	74"	+45.0 / -47.0	+47.0 / -47.0	+35.0 / -35.0	+40.0 / -40.0	+47.0 / -47.0
OX or XO	75"	+45.0 / -47.0	+47.0 / -47.0	+35.0 / -35.0	+40.0 / -40.0	+47.0 / -47.0
OXO	112.5"	+45.0 / -47.0	+47.0 / -47.0	+35.0 / -35.0	+40.0 / -40.0	+47.0 / -47.0
OXXO	149"	+45.0 / -47.0	+47.0 / -47.0	+35.0 / -35.0	+40.0 / -40.0	+47.0 / -47.0

1 [Signature]
KURT BALTHAZOR
FLORIDA P.E.
#56533

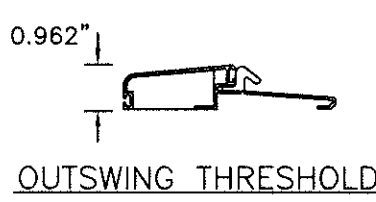
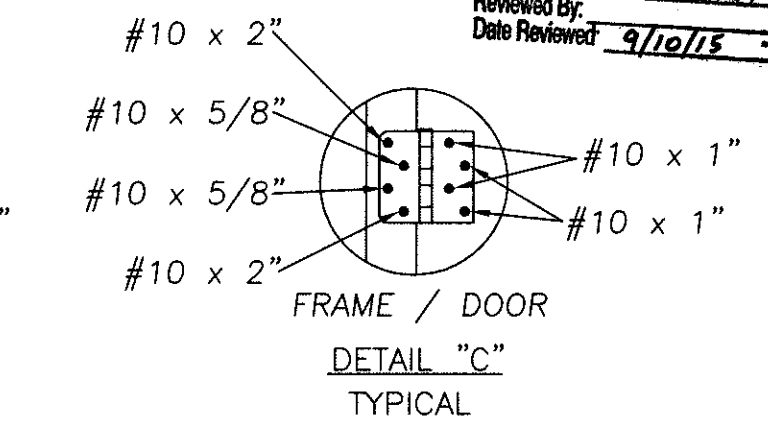
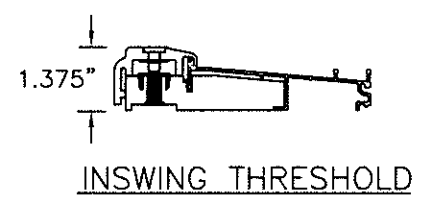
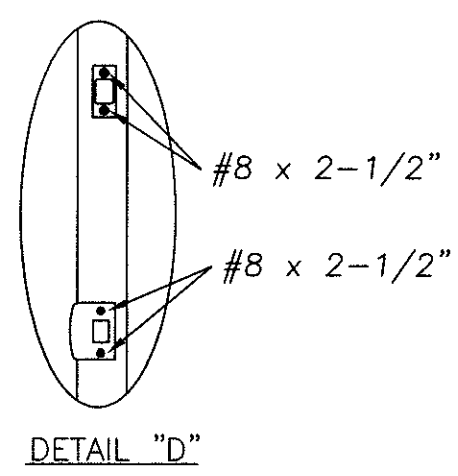
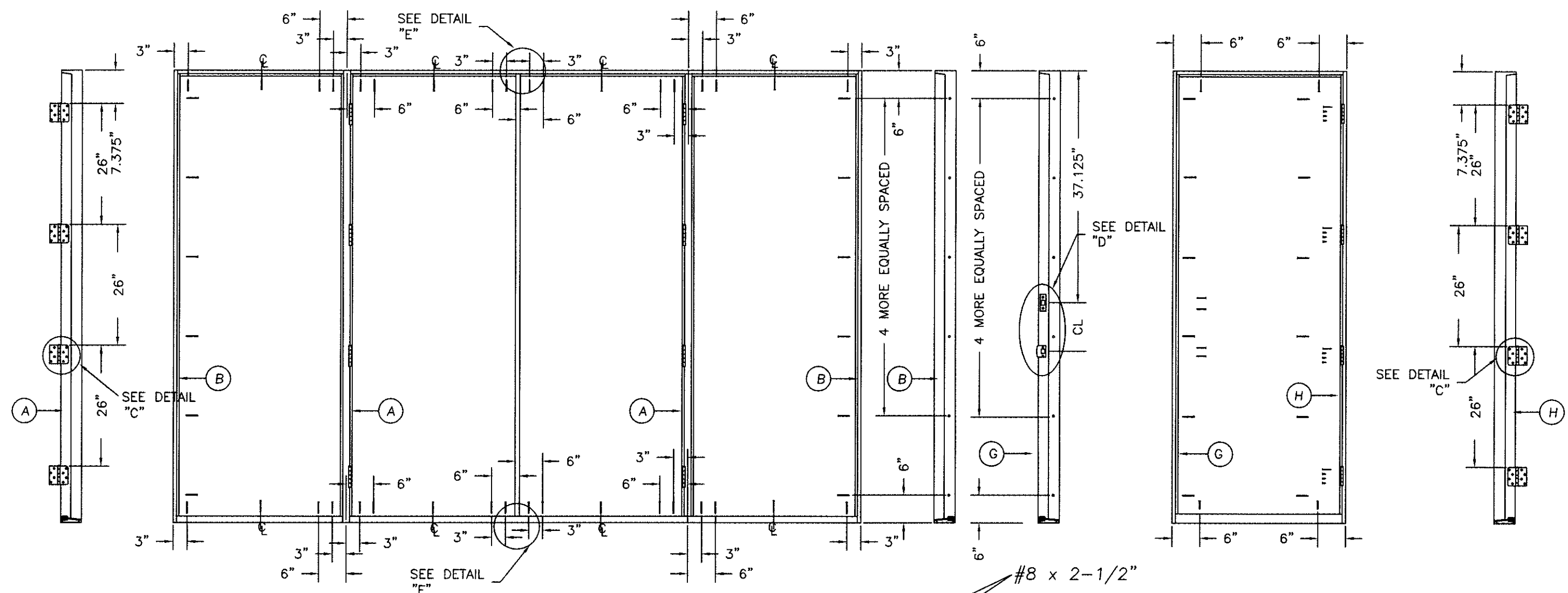
MASONITE INTERNATIONAL CORP.
1955 POWIS ROAD
WEST CHICAGO, IL 60185

PRODUCT: EXTERIOR DOOR PRODUCT
DOUBLE 8'0" GLAZED FIBERGLASS DOOR
PART OR ASSEMBLY: TYPICAL ELEVATIONS & GENERAL NOTES

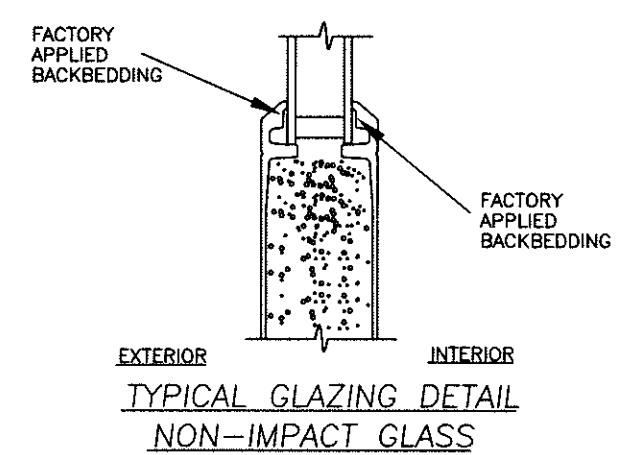
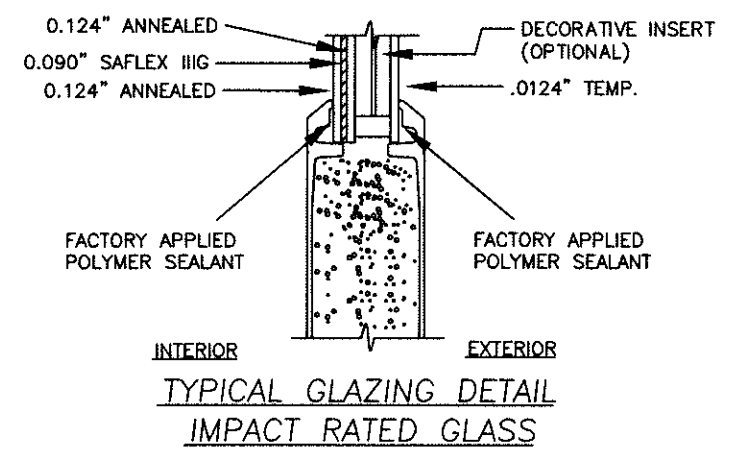
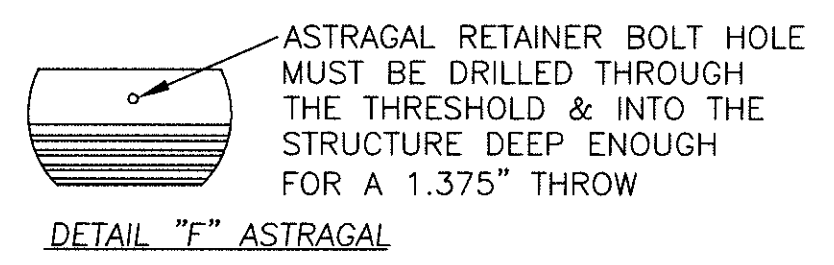
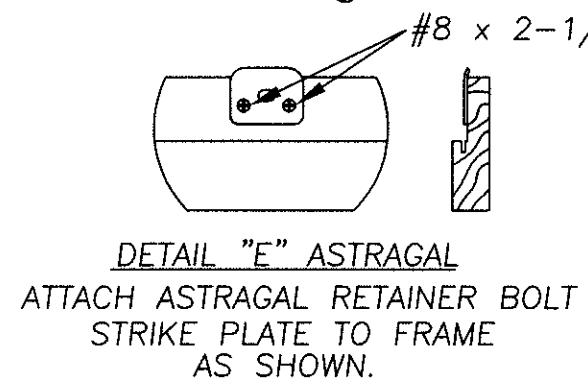
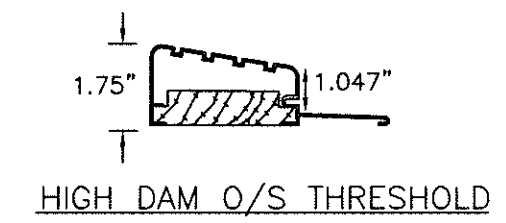
NO.	DATE	BY	REVISIONS

DATE: 8/10/15
SCALE: N.T.S.
DWG. BY: SWS
CHK. BY:
DRAWING NO.:
DWG-MA-FL0183-15
SHEET 1 OF 3

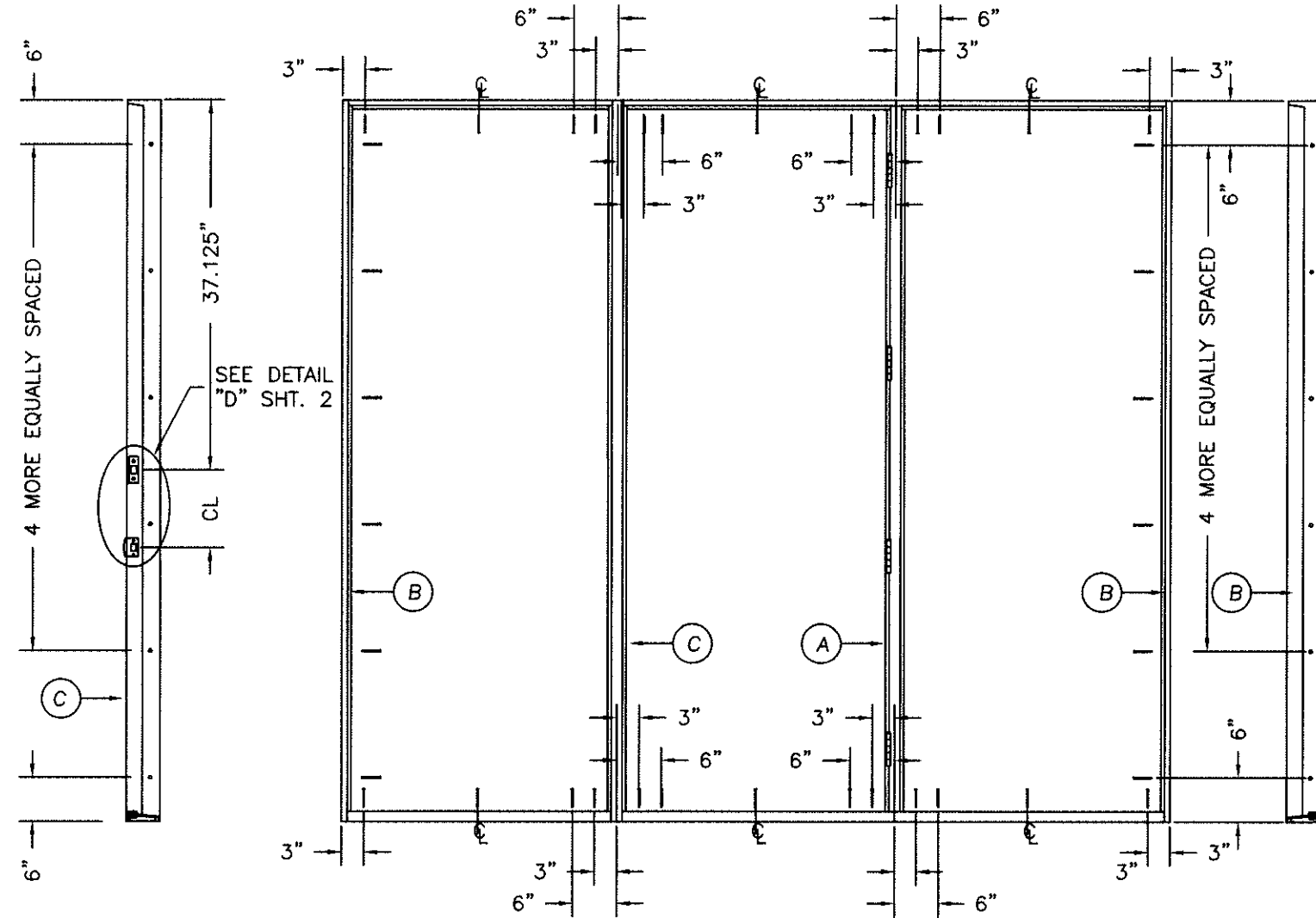
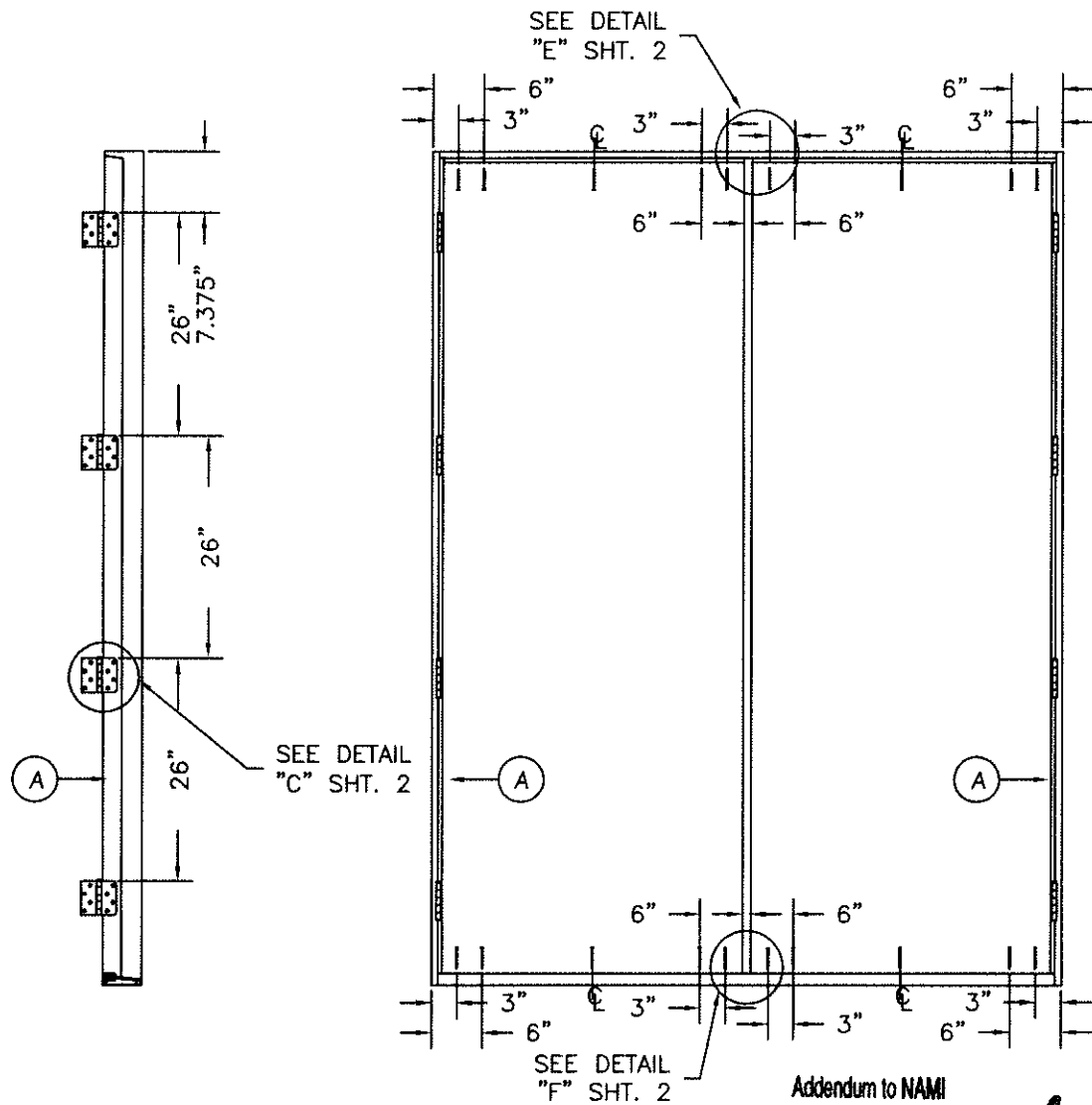
PRODUCT: "EXTERIOR DOOR PRODUCT"
 8'0" FIBERGLASS GLAZED
 DOUBLE DOOR UNIT
 PART OR ASSEMBLY:
 ANCHORING LOCATIONS
 & DETAILS



Addendum to NAMI
 Certification No.: NE012729
 Reviewed By: *[Signature]*
 Date Reviewed: 9/10/15



NO.	DATE	BY	REVISIONS

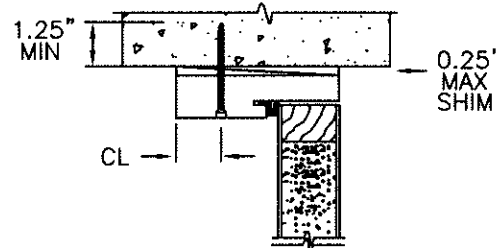


Addendum to NAMI

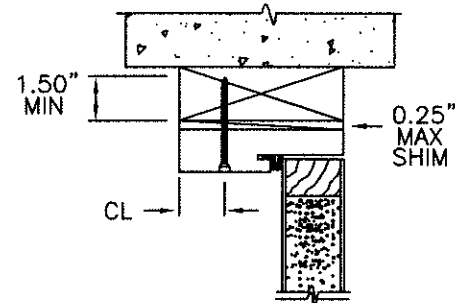
Certification No.: NE012729
 Reviewed By: [Signature]
 Date Reviewed: 9/10/15

ATTACHMENT DETAIL

- ANCHOR ANALYSIS FOR LOADING CONDITIONS PREPARED, SIGNED AND SEALED BY LUIS R. LOMAS, PE (FLORIDA #62514) WITH THE LOWEST (LEAST) FASTENER RATING FROM THE DIFFERENT FASTENERS BEING CONSIDERED FOR USE. JAMB, HEAD, AND THRESHOLD FASTENERS ANALYZED FOR THIS UNIT INCLUDE #10 WOOD SCREWS OR 1/4" TAPCONS. A PHYSICAL SHIM MUST BE PLACED IN SHIM SPACE AT EACH ANCHOR LOCATION. TAPCON EDGE DISTANCE MIN 2-1/2". WOOD SCREW EDGE DISTANCE MIN 3/4".
- THE WOOD SCREW SINGLE SHEAR DESIGN VALUES COME FROM ANSI/AF&PA NDA FOR SOUTHERN PINE LUMBER AND ACHIEVEMENT OF 1-1/2" MINIMUM EMBEDMENT. THE TAPCON MUST ACHIEVE MINIMUM EMBEDMENT OF 1-1/4".
- WOOD BUCKS BY OTHERS MUST BE ANCHORED PROPERLY TO TRANSFER LOADS TO STRUCTURE.
- MINIMUM DESIGN VALUE STRENGTH OF ANCHORS 171 LBS.



TYPICAL MASONRY ANCHOR INSTALLATION



TYPICAL WOOD BUCK ANCHOR INSTALLATION
 4-9/16" MIN JAMB

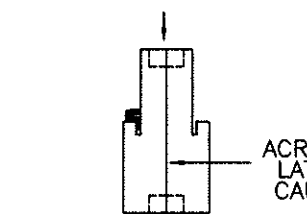
HARDWARE SCHEDULE

1.	KWIKSET SERIES 400 GRADE 3 CYLINDRICAL LATCH AND SERIES 980 GRADE 1 DEADLOCK HARDWARE TO BE INSTALLED AT 10-1/2" CENTERLINE.
1a.	KWIKSET SERIES 400 GRADE 3 CYLINDRICAL LATCH AND SERIES 980 GRADE 1 DEADLOCK HARDWARE TO BE INSTALLED AT 10-1/2" CENTERLINE MINIMUM WITH 8" GRADE 1 (ANSI/BHMA A156.16) SURFACE BOLTS INSTALLED ON LATCH SIDE OF ACTIVE DOOR PANEL - (1) AT TOP AND (1) AT BOTTOM.
2.	4" X 4" FULL MORTISE BUTT HINGES.

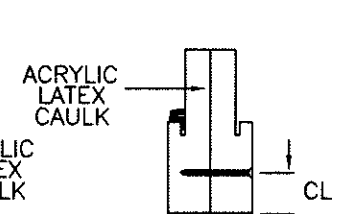
1"X1/2" CORRUGATED
 3" FROM EACH END
 AND 7" OC

#10X2" WOOD SCREW
 6" FROM EACH END
 AND 12" OC

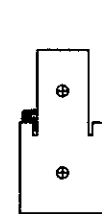
(2) #10X2-1/2"
 WOOD SCREWS
 EACH END



COMBINATION MULLION (BOXED)



COMBINATION MULLION (BOXED)



COMPOSITE MULLION (INTEGRAL)

PRODUCT: EXTERIOR DOOR PRODUCT 8'0" FIBERGLASS GLAZED DOUBLE DOOR UNIT	PART OR ASSEMBLY: ANCHORING LOCATIONS & DETAILS	BY
		NO.
		REVISIONS
		DATE

DATE:	8/10/15
SCALE:	N.T.S.
DWG. BY:	SWS
CHK. BY:	
DRAWING NO.:	DWG-MA-FL0183-15
SHEET	3 OF 3