

Vision Hollow Metal Limited

400 Zenway Blvd. Unit #1
Woodbridge, ON L4H OS7

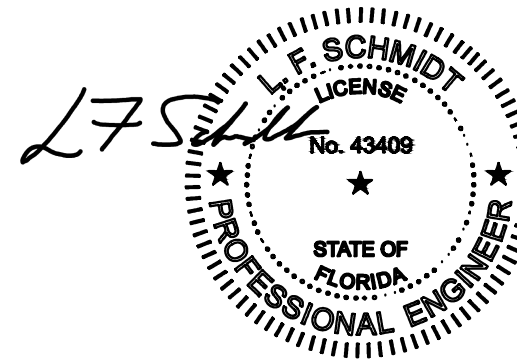
LS18 STEEL DOOR w/ or w/out VISION LITE IN SWING/OUT SWING "IMPACT"

GENERAL NOTES

- This product has been evaluated and is in compliance with the 8th Edition (2023) Florida Building Code (FBC) structural requirements including the "High Velocity Hurricane Zone" (HVHZ).
- Product anchors shall be as listed and spaced as shown on details. Anchor embedment to base material shall be beyond wall dressing or stucco.
- When used in the "HVHZ" this product complies with Section 1626 of the Florida Building Code and does not require an impact resistant covering.
- When used in areas outside of the "HVHZ" requiring wind borne debris protection, this product complies with FBC Sections 1609.1.2 & R301.2.1.2 and does not require an impact resistant covering. This product meets missile level "D" and includes Wind Zone 4 as defined in ASTM E 1996 and FBC Sections 1609.1.2.2 & R301.2.1.2.1.
- Site conditions that deviate from the details of this drawing require further engineering analysis by a licensed engineer or registered architect.
- This product does not meet the water infiltration requirements for the "HVHZ" and shall be installed only in non-habitable areas or at habitable locations protected by an overhang or canopy such that the angle between the edge of canopy or overhang to sill is less than 45 degrees.
- When used in the "HVHZ", steel must be protected as specified in FBC Section 2222.6.

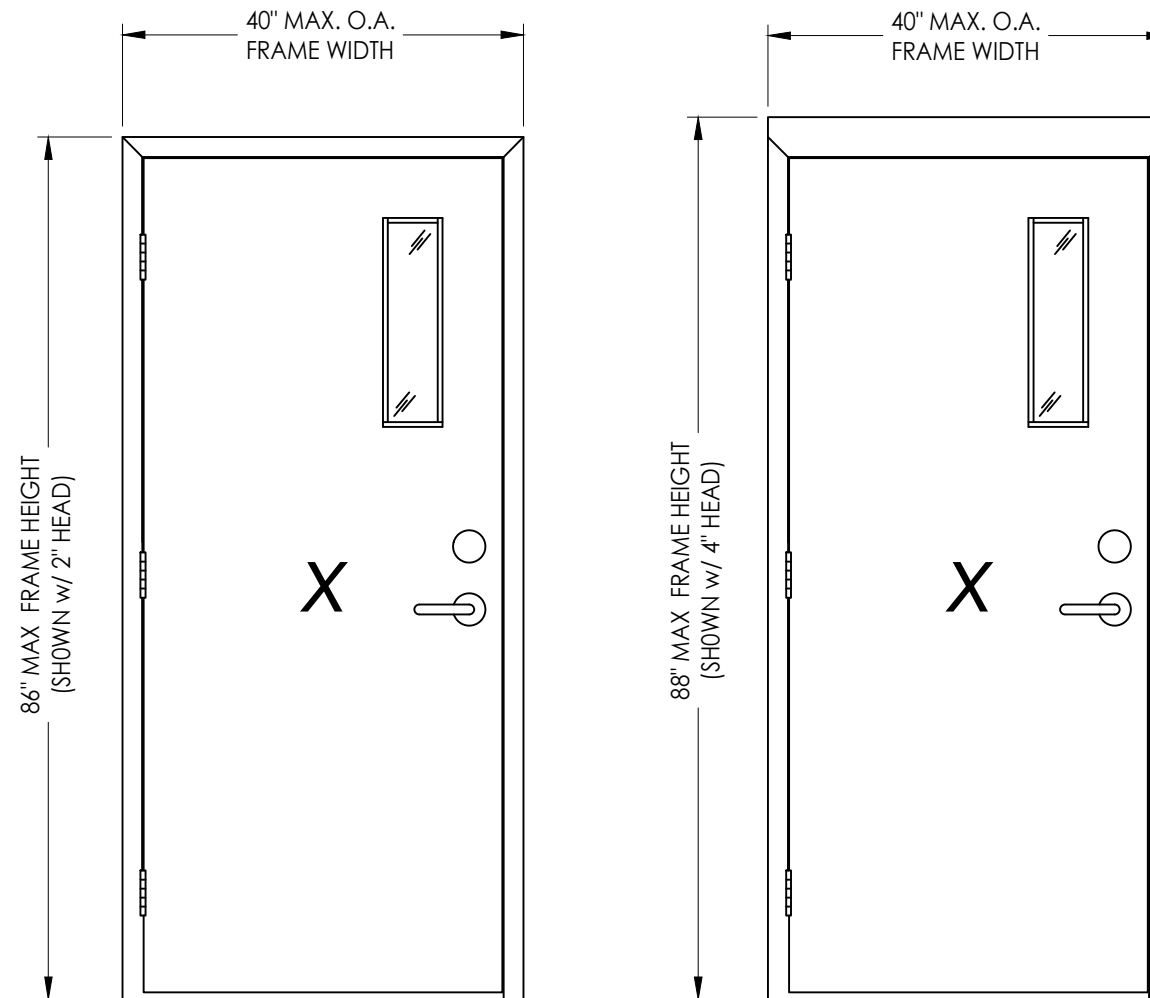
TABLE OF CONTENTS

| SHEET # | DESCRIPTION |
|---------|---|
| 1 | Typical elevations, design pressures, & general notes |
| 2 | Door panel details |
| 3 | Elevations & vertical cross sections |
| 4 | Horizontal cross sections |
| 5 | Horizontal cross sections |
| 6 | Frame anchoring |
| 7 | Frame anchoring |
| 8 | Bill of materials & components |



This item has been digitally signed and sealed by L. F. Schmidt, P.E. on the date adjacent to the seal.
Printed copies of this document are not considered signed and sealed and the signature must be verified on any electronic copies.

THIS PRODUCT APPROVAL IS VALID ONLY FOR THE STATE OF FLORIDA



SHOWN w/ CYLINDRICAL LEVER LOCK & OPTIONAL DEADBOLT

| MAX. OVERALL DIMENSION | DESIGN PRESSURE (PSF) INSWING | | DESIGN PRESSURE (PSF) OUTSWING | |
|------------------------|-------------------------------|----------|--------------------------------|----------|
| | POSITIVE | NEGATIVE | POSITIVE | NEGATIVE |
| 40.0" X 88.0" | +60.0 | -65.0 | +58.0 | -58.0 |

SEE SHEETS 4-7 FOR DESIGN PRESSURE LIMITATIONS

Documents Prepared By:
Lyndon F. Schmidt
P.E. No. 43409

RW BUILDING CONSULTANTS, INC.
P.O. Box 230, Valrico, FL 33595
Phone No.: 813.659.9197
FBPE Registry No. 9813

PRODUCT:
VISION HOLLOW METAL

PART OR ASSEMBLY:
TYPICAL ELEVATIONS, DESIGN PRESSURES & GENERAL NOTES

| NO. | DATE | BY | REVISIONS |
|-----|------|----|-----------|
| | | | |
| | | | |
| | | | |
| | | | |
| | | | |
| | | | |
| | | | |
| | | | |
| | | | |

DATE: 12/14/23

SCALE: N.T.S.

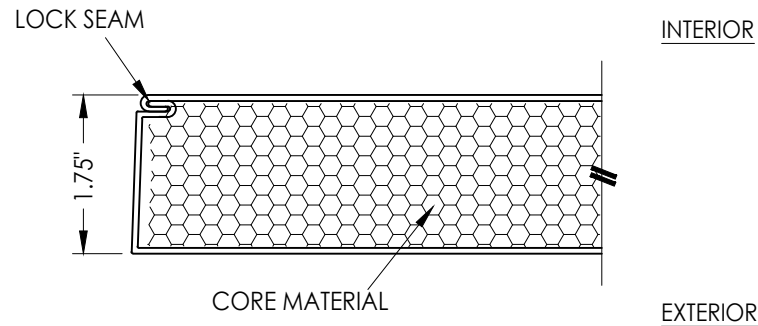
DWG. BY: LFS

CHK. BY: RW

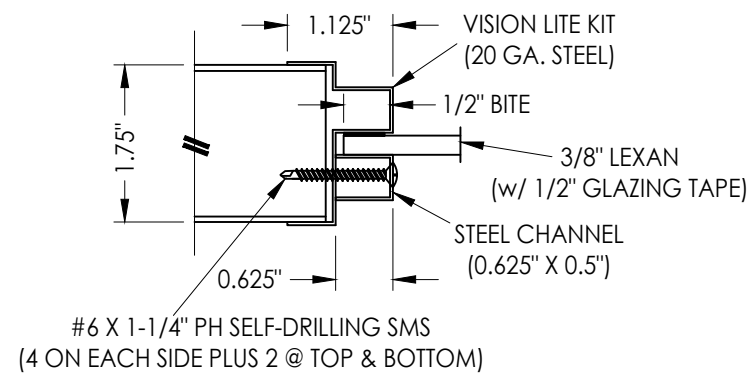
DRAWING NO.:

FL-19036.14

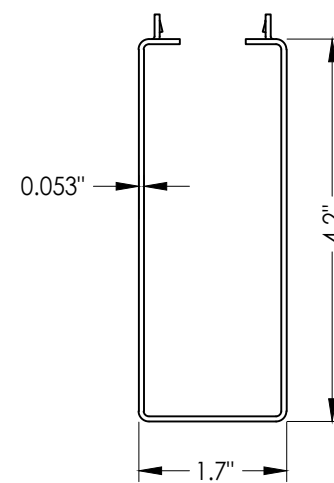
SHEET 1 OF 8



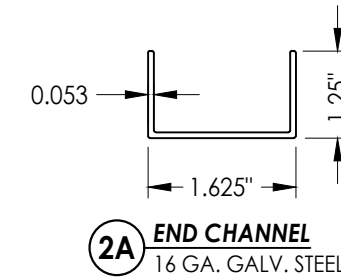
1 HORIZONTAL CROSS SECTION
2



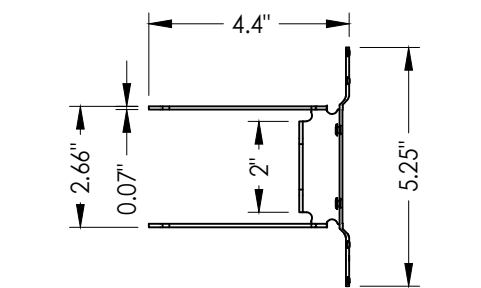
P1 LEXAN LITE DETAIL



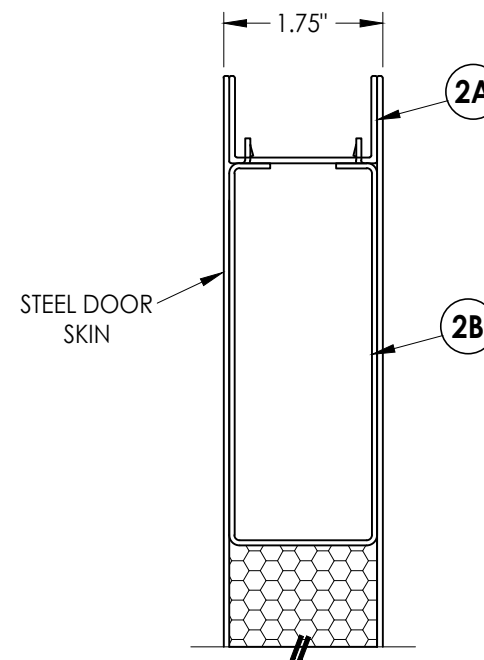
2B CLOSER BOX
16 GA. GALV. STEEL



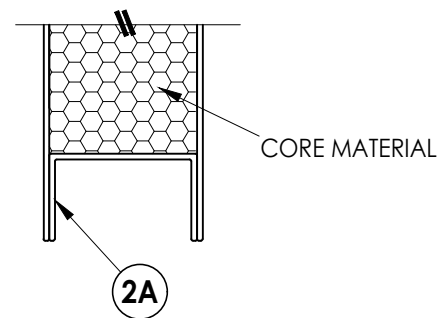
2A END CHANNEL
16 GA. GALV. STEEL



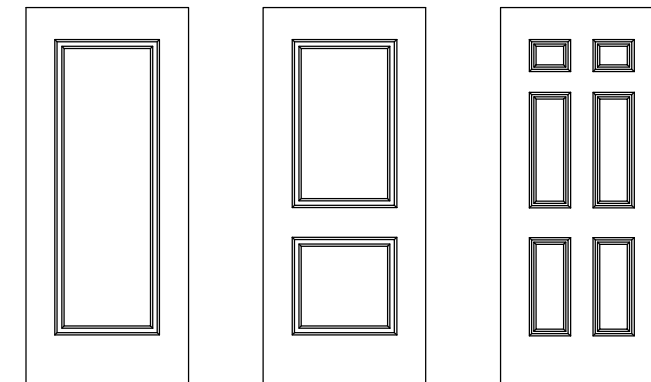
2C CYLINDRICAL LOCK REINFORCEMENT
18 GA. GALV. STEEL



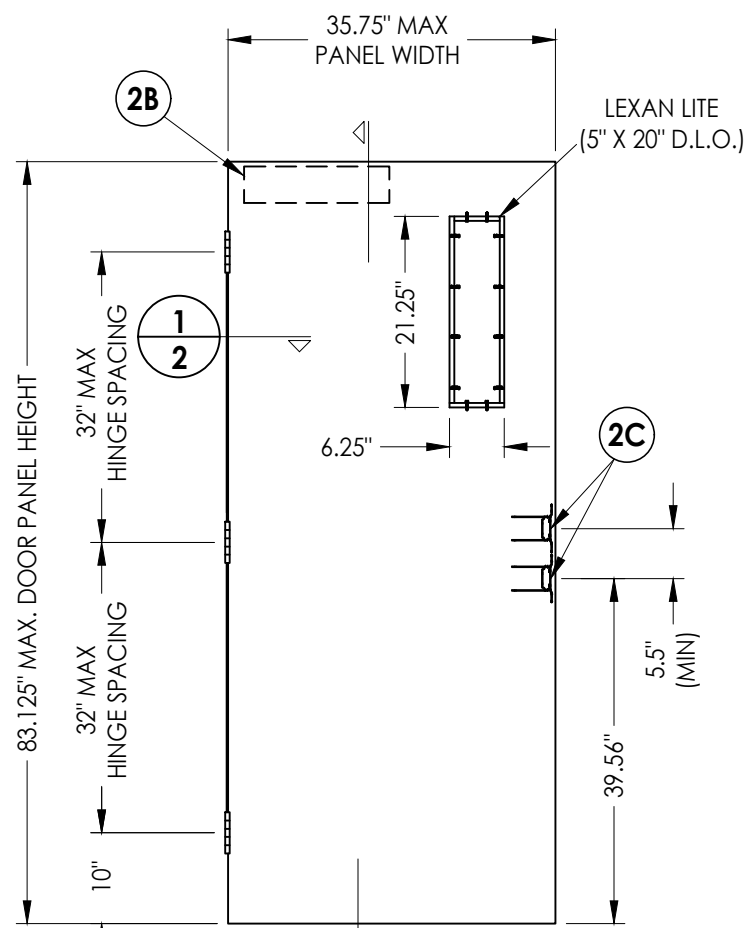
EXTERIOR INTERIOR



2 VERTICAL CROSS SECTION
2



OPTIONAL EMBOSSED PANELS
w/out VISION LITE



40 STEEL DOOR PANEL
7'-0" Steel Door
w/ or w/out Vision Lite

| LOCK HARDWARE | |
|----------------------|-----------------------------------|
| LEVER: | DOREX F SERIES (FH53) |
| DEADBOLT (OPTIONAL): | HAGER 3200 SERIES or SCHLAGE B60N |

Documents Prepared By:
Lyndon F. Schmidt
P.E. No. 43409

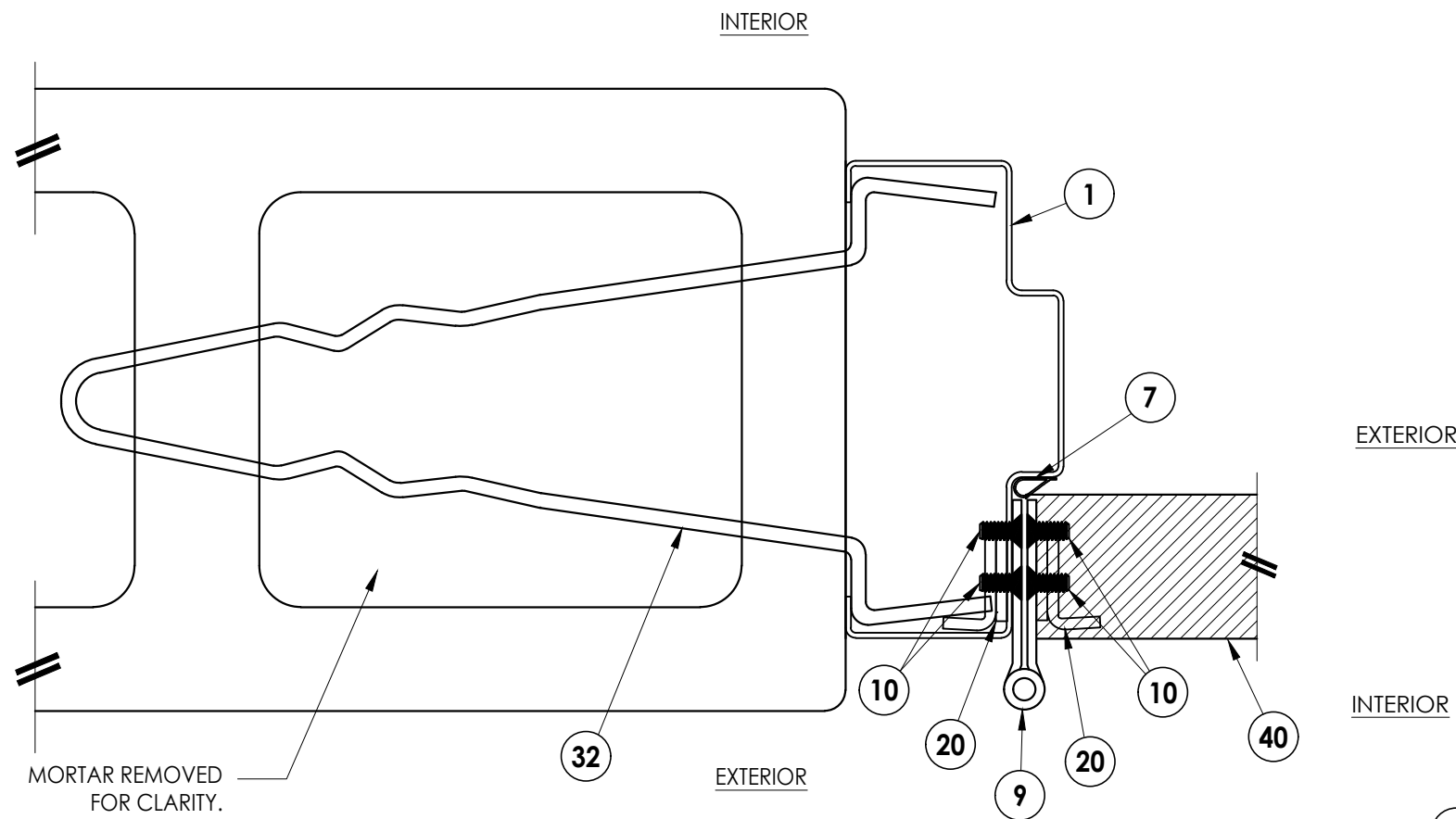
RW BUILDING CONSULTANTS, INC.
P.O. Box 230, Valrico, FL 33595
Phone No.: 813.659.9197
FBPE Registry No. 9813

PRODUCT: VISION HOLLOW METAL

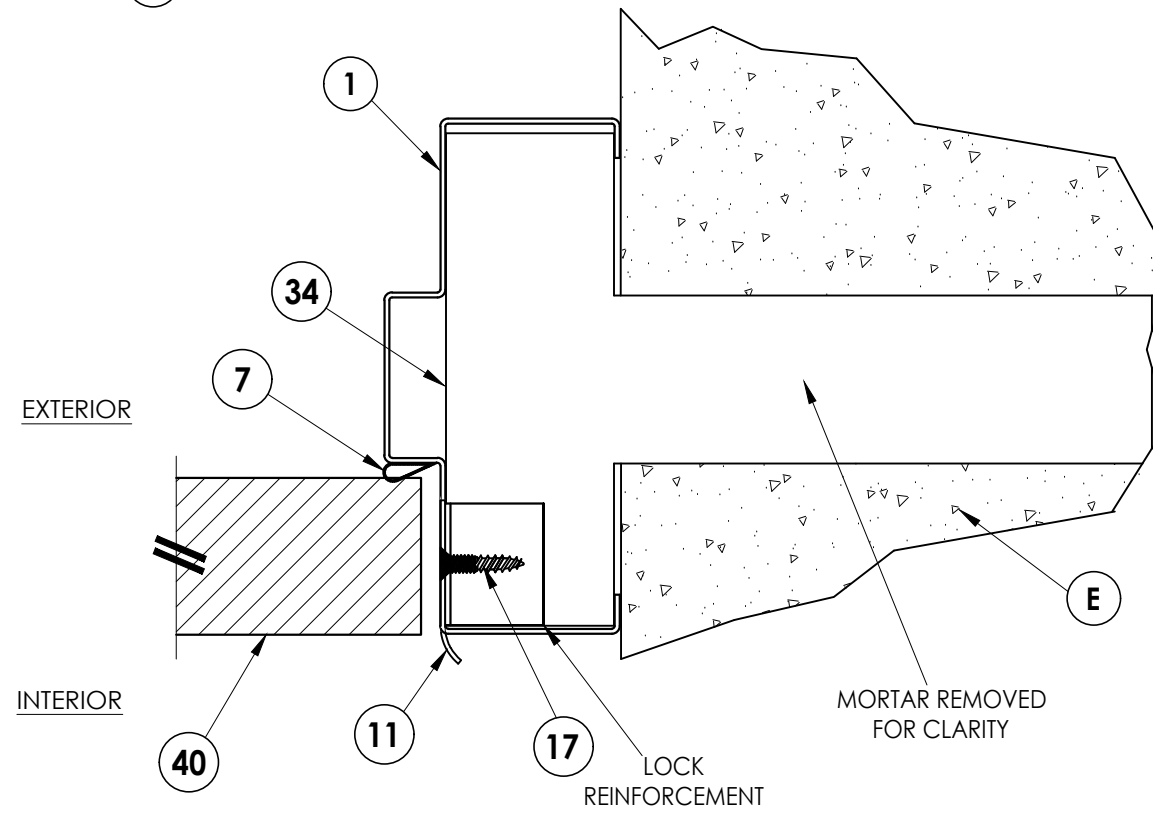
PART OR ASSEMBLY: DOOR PANEL DETAILS

| NO. | DATE | BY | REVISIONS |
|-----|------|----|-----------|
| | | | |
| | | | |
| | | | |

DATE: 12/14/23
SCALE: N.T.S.
DWG. BY: LFS
CHK. BY: RW
DRAWING NO.: FL-19036.14
SHEET 2 OF 8



1 HORIZONTAL CROSS SECTION
 5 Shown w/ Masonry Wire Anchor
 Inswing Shown (Outswing Similar)



2 HORIZONTAL CROSS SECTION
 5 Shown w/ Masonry T^m Anchor
 Inswing Shown (Outswing Similar)

| MAXIMUM DESIGN PRESSURE (PSF) FOR ANCHORING SHOWN ON THIS SHEET | | | |
|---|----------|----------|----------|
| INSWING | | OUTSWING | |
| POSITIVE | NEGATIVE | POSITIVE | NEGATIVE |
| +60.0 | -65.0 | +58.0 | -58.0 |

Documents Prepared By:
 Lyndon F. Schmidt
 P.E. No. 43409

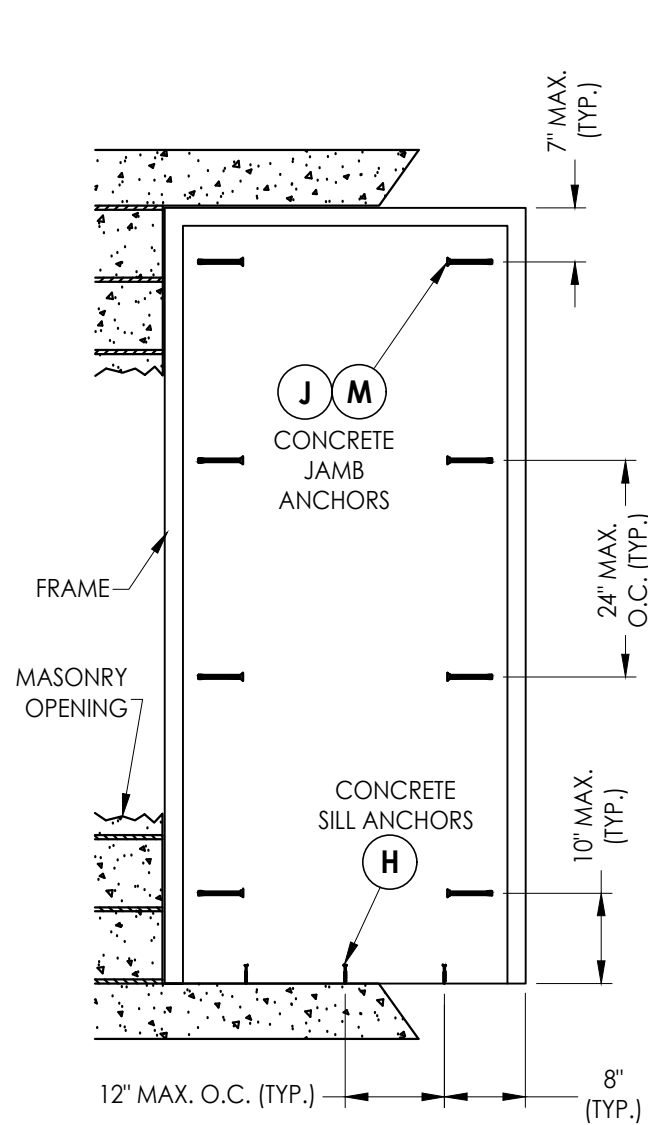
RW BUILDING CONSULTANTS, INC.
 P.O. Box 230, Valrico, FL 33595
 Phone No.: 813.659.9197
 FBPE Registry No. 9813

PRODUCT:
 VISION HOLLOW METAL

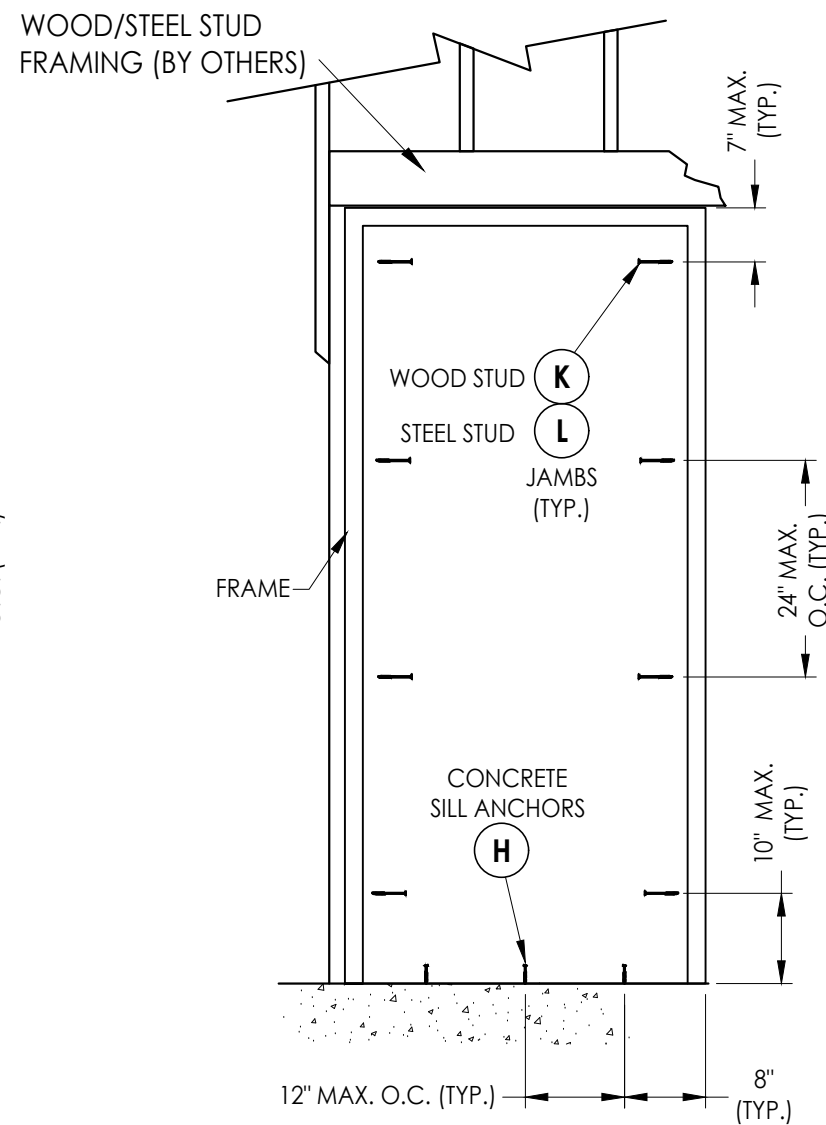
PART OR ASSEMBLY:
 HORIZONTAL
 CROSS SECTIONS

| NO. | DATE | BY | REVISIONS |
|-----|------|----|-----------|
| | | | |
| | | | |
| | | | |
| | | | |

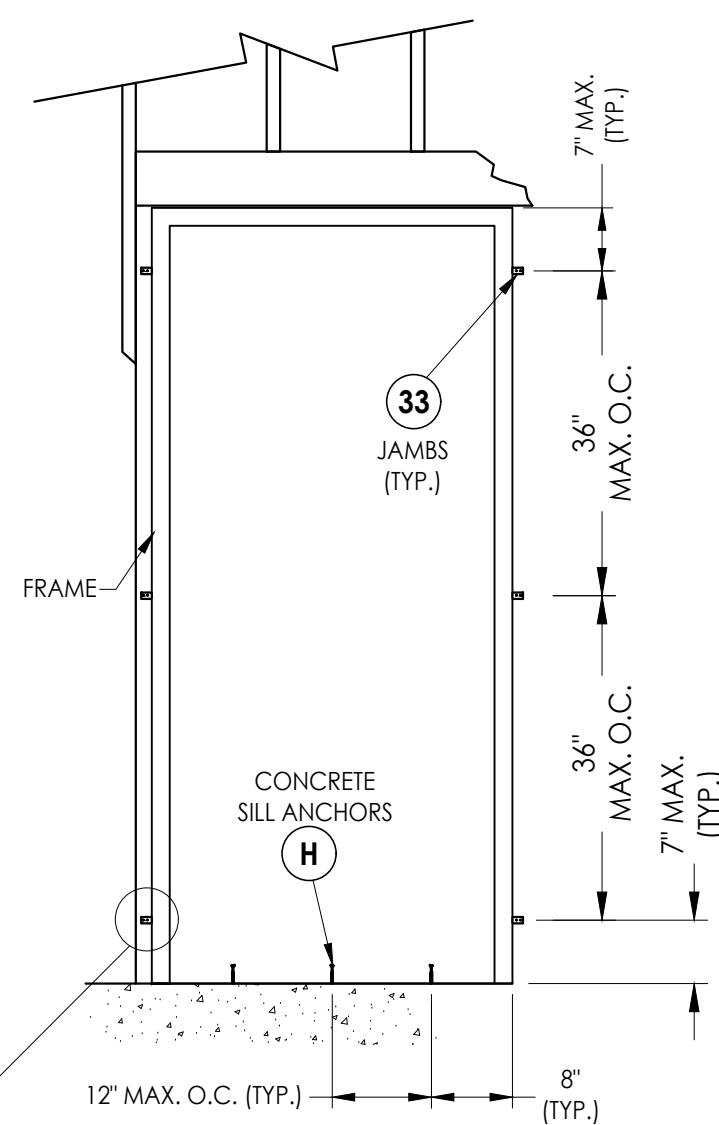
DATE: 12/14/23
 SCALE: N.T.S.
 DWG. BY: LFS
 CHK. BY: RW
 DRAWING NO.:
 FL-19036.14
 SHEET 5 OF 8



FRAME ANCHORING
Masonry Construction
Concrete Anchors

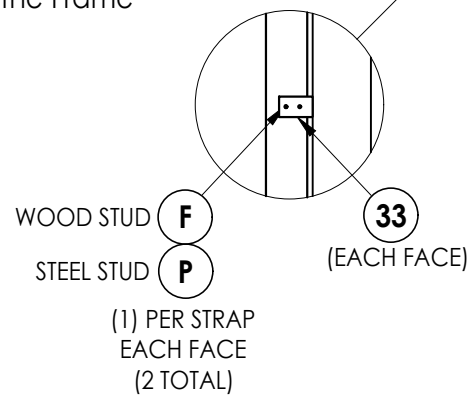


FRAME ANCHORING
Wood/Steel Stud
Through the Frame



FRAME ANCHORING
Wood/Steel Stud
Strap Anchors

NOTE: WOOD/STEEL STUD STRAP ANCHOR INSTALLATION IS NOT QUALIFIED FOR USE IN THE "HVHZ"



- CONCRETE ANCHOR NOTES:**
- Concrete screw locations at the corners may be adjusted to maintain a minimum 1" edge distance to mortar joints. If concrete screw locations noted as "MAX. O.C." must be adjusted to maintain the minimum edge distance to mortar joints, additional concrete screws may be required to ensure the maximum on center dimension is not exceeded.
 - Concrete anchor table:

| ANCHOR TYPE | ANCHOR LOCATION | ANCHOR SIZE | MANUFACTURER | MIN. EDGE DISTANCE | MIN. EMBEDMENT |
|------------------------|-----------------|-------------|---|--------------------|----------------|
| CONCRETE ANCHOR SCREW | JAMBS | 3/8" | LDT TAPCON® (ITW BUILDEX) | 3" | 1-1/2" |
| | SILL | 1/4" | TAPCON® (ITW BUILDEX) ULTRACON+® (DeWALT) TAPPER+® (POWERS) | 2-1/2" | 1-3/4" |
| CONCRETE SLEEVE ANCHOR | JAMBS | 3/8" | DYNABOLT SLEEVE ANCHOR® (ITW REDHEAD) | 2-1/4" | 1-1/2" |

| MAX. OVERALL DIMENSION | MAXIMUM DESIGN PRESSURE (PSF) FOR ANCHORING SHOWN ON THIS SHEET | | | |
|-------------------------------|---|----------|----------|----------|
| | INSWING | | OUTSWING | |
| | POSITIVE | NEGATIVE | POSITIVE | NEGATIVE |
| 40.0" X 86.0" w/ MAX. 2" HEAD | +50.0 | -60.0 | +55.0 | -55.0 |

Documents Prepared By:
Lyndon F. Schmidt
P.E. No. 43409

RW BUILDING CONSULTANTS, INC.
P.O. Box 230, Valrico, FL 33595
Phone No.: 813.659.9197
FBPE Registry No. 9813

PRODUCT:
VISION HOLLOW METAL

PART OR ASSEMBLY:
FRAME ANCHORING

| NO. | DATE | BY | REVISIONS |
|-----|------|----|-----------|
| | | | |
| | | | |
| | | | |

DATE: 12/14/23

SCALE: N.T.S.

DWG. BY: LFS

CHK. BY: RW

DRAWING NO.: FL-19036.14

SHEET 6 OF 8

