



P. O. Box 397
Fortson, GA 31808
800-755-0825
Technical 800-760-2861
masterwall.com

Submittal Package

Project:

Location:

Architect:

General Contractor:

Applicator:

Benefits of Master Wall®

- American owned and privately managed, our focus is the customer
- Serving customers since 1987
- Quality products featuring 100% pure acrylic polymers
- Dedicated to the EIFS & Stucco Markets, it's *what* we do, not part of what our company does
- Experienced Staff—100+ years of experience
- Service—we provide it!
 - Job site visits
 - Color matching
 - Architectural Support
 - Samples
 - Plan, detail and technical reviews
- Dedicated to a culture of excellence

excellence

Included in Submittal:

- **System Data Sheets**
- **Product Data Sheets**
- **Specifications**
- **Details**
- **Sample Warranty**





Rollershield LAB

07 27 00

Liquid Applied Air/Water Barrier

100%

When it comes to keeping your building dry you want 100% protection, and can't settle for less. Sheet water barriers have laps, gaps and are secured with fasteners...holes. At windows and doors peel and stick flashings don't seal properly or lose bond over time.

The Rollershield LAB Air/Water Barrier System is a fluid applied secondary water barrier and flashing that offers 100% coverage with no laps, breaks or holes. It seals the substrate and protects the building.

Let me Breathe!

Like people, buildings breathe and are continuously passing water vapors around depending upon interior and exterior conditions. While Rollershield is an excellent water barrier, it's also highly breathable (30 perms). This means that building moisture can pass easily and eliminates the problems posed by vapor barriers.

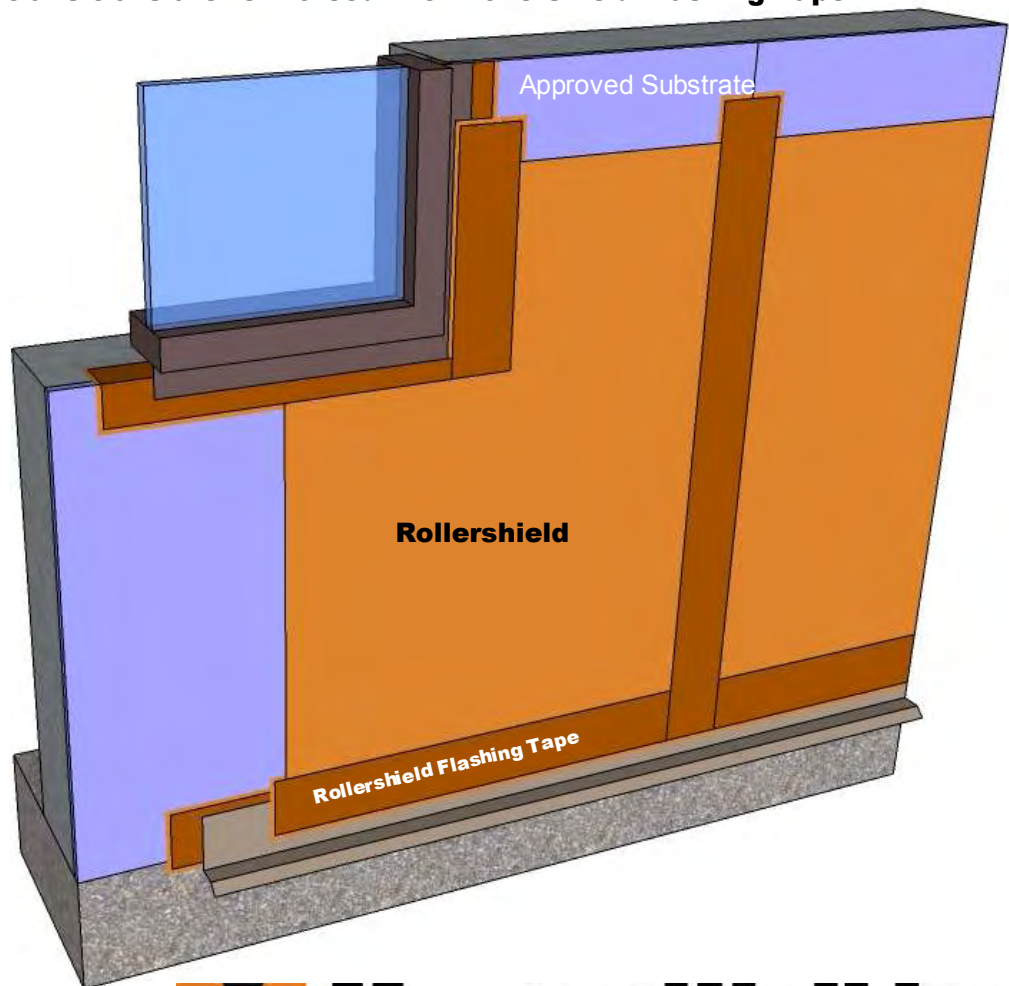
System Use

- Commercial
- Residential

The Rollershield LAB Liquid-applied Air/Water Barrier system works under all claddings that require a secondary water barrier including stone, brick, stucco and Master Wall® EIFS. The system consists of the following components:

- Rollershield Air/Water Barrier, supplied in 5 gallon (19L) pails
- Rollershield Flashing Tape for openings and sheathing applications

Rollershield is applied with a foam roller or spray equipment to 10 mils dry thickness and forms a continuous water barrier. Sheathing board joints and transitions are reinforced with Rollershield Flashing Tape.



 **Master Wall Inc.**
Building a Culture of Excellence

masterwall.com

PO Box 397 • Fortson • GA • 31808 • 800-755-0825 • Tech: 800-760-2861



Rollershield LAB

Short Form Specification

1.0 General

This is a short form specification. Refer to Rollershield LAB specifications and details for additional information.

1.1 System Description

The Master Wall Inc.® Rollershield LAB System is a liquid applied vapor permeable air and water barrier.

1.2 Design Requirements:

- A. Reference Master Wall® suggested details and architectural drawings for specific detail requirements.
- B. Maximum deflection of substrates shall not exceed L/240.
- C. Typical acceptable substrates include unpainted brick, masonry, concrete, plywood, Oriented Strand Board (OSB) or gypsum sheathings (ASTM C1396 or C1177). Contact Master Wall® for other approved substrates.

1.3 Job Conditions

- A. Store all materials protected from weather and direct sunlight at temperatures above 40°F (5°C).
- B. The ambient and wall temperature shall be a minimum of 40°F (5°C) and shall remain so for at least 24 hours after installation.

2.0 Products

All components of the Rollershield System shall be manufactured by Master Wall Inc.® and supplied by an authorized distributor.

A. Water Barrier & Flashing Tapes:

- 1. Rollershield: A 100% pure acrylic-based roll-applied weather-resistive barrier.
- 2. Rollershield Flashing Tape: A lightweight nonwoven joint treatment material.

3.0 Installation

- A. Inspect the substrate to ensure that it is free of all foreign materials that would affect the adhesion of the Rollershield LAB.
- B. Apply the coatings in strict accordance with Master Wall® specifications, product data sheets, architectural drawings and architectural specifications.

ASTM C297 Tensile Bond

Dens Glass Gold	31.6 psi
Exterior Gypsum	28.2 psi
OSB	40.4 psi
Plywood	79.1 psi
Cement Board	70.6 psi
Copper	185.1 psi
Galvanized Steel	180.8 psi
Rigid PVC	168.2 psi
Aluminum	184.2 psi
Color Coated Aluminum	203.5 psi
Stainless Steel	183.0 psi

ICC-ES AC212 Freeze Thaw

Plywood	Pass
Cement Board	Pass
OSB	Pass
Exterior Gypsum	Pass
Dens Glass Gold	Pass

ASTM D2247 Water Resistance/ICC-ES AC212

Exterior Gypsum	Pass
Dens Glass Gold	Pass
Cement Board	Pass
Plywood	Pass
OSB	Pass

ASTM E96 Water Vapor Transmission

203 g/24 hr/m²
30.5 perms

ICC-ES AC212 Full Scale Conditioning and Water Testing

Pass

ICC-ES AC212 Weathering, 55 cm Head

Exterior Gypsum	Pass
Dens Glass Gold	Pass
Cement Board	Pass
OSB	Pass
Plywood	Pass

ASTM E273 EIFS Drainage Performance

ICC-ES AC212 99.2% Efficiency

ASTM E2178 Air Permeability

0.0002 cfm/ft² at 1.57 psf

ASTM E2357 Air Leakage Resistance

0.003 L/s/m² @ 75 Pa
0.02 L/s/m² @ 300 Pa

ASTM E-84 Combustibility

Flamespread-5
Smoke Developed-5

NFPA 285 Multi-Story Fire Test

Pass

We finish strong.

Information contained in this product data sheet conforms to the standard detail recommendations and specifications for the installation of Master Wall Inc.® products and is presented in good faith. Master Wall Inc.® assumes no liability, expressed or implied as to the architecture, engineering, or workmanship of any project. This information may be concurrent with, or superseded by other applicable documents, such as specifications and details. Contact Master Wall Inc.® for the most current product information. ©2014 Master Wall Inc.®



PO Box 397 • Fortson • GA • 31808 • 800-755-0825 • Tech: 800-760-2861



Rollershield

Systems

Rollershield Drainage EIFS
Cemplaster Fiberstucco
Common Cladding Systems

VOC: <1% by Weight

VOC: 10 g/l

**Manufacture Locations:
30058 • 84651**

Packaging: 5 gallon (19L) pail

Pail Weight: 60 lbs (27 kg)

Shelf Life: 2 years

Coverage (estimated per pail)

Roller: 450-500 sf (42-46 sm)

Trowel: 200-250 sf

Spray: 300-350 sf

Dry to Touch: 1 hour @ room temperature

Recoat Time: 2 hours @ room temperature

Drying Time: 12 hours @ room temperature

Application Range: 40°-110°F (5°-43°C)

Exposure: 30 days maximum for EIFS*, 6 months maximum for other claddings.

*surface must be clean and dry prior to application of EIFS

Shelf Life: 2 years

Rollershield is a high quality 100% acrylic roll applied flexible air and water barrier. Easily applied with a trowel, brush, roller, hopper gun or airless sprayer. Rollershield forms a continuous air and water barrier that protects approved substrates from incidental water damage.



- **100% Coverage**
- **Doesn't rattle in the wind**
- **Vapor permeable with low air infiltration rate**
- **Used as water barrier and flashing**

Product Test Standards

ASTM C297/E2134, ASTM D2247, ASTM E72, ASTM E84, ASTM E96 (30 perms @ 10 mils), ASTM E331, ASTM E1233, ASTM E2178 (0.0002 cfm/ft²), ASTM E2357 (0.003 L/s·m² @ 75 Pa, 0.02 L/s·m² @ 300 Pa), ASTM E2485, AATCC 127, ICC ES (AC 212), NFPA 285



masterwall.com

PO Box 397 • Fortson • GA • 31808 • 800-755-0825 • Tech: 800-760-2861



Rollershield

Temp: 40°-110°F (5°-43°C) • Dry to Touch: 1 hour • Dry Time: 12 hrs
at room temperature, working and drying time will vary with temperature and humidity

Application Procedure

Job Conditions - Air and substrate temperature for application of Rollershield must be 40°F (5°C) or higher and must remain 40°F (5°C) or higher for a minimum of 24 hours. Provide temporary protection to protect the wall system from damage until permanent flashings, caps and sealants are installed. Store materials within prescribed temperature limits and out of direct sunlight. Working and drying times are based upon normal room temperature conditions and will vary with temperature and humidity.

Preparation - The substrate must be approved by Master Wall Inc., clean, dry, structurally sound and free of efflorescence, oil, grease, form release agents and curing compounds or anything that would affect bond. Painted surfaces are not acceptable and must be removed. Substrates must be flat and free of fins or planar irregularities greater than 1/4" in 10'-0" (6.35 mm in 3.05m).

Concrete - Must have cured a minimum of 28 days prior to the application of Rollershield. If form release agents or curing compounds exist on the surface, they must be removed with a solution of muriatic acid or similar product (with appropriate precautions). Remove any residual acid by flushing with water.

Brick/Masonry - If joints are not struck flush, multiple coats may be required. Contact Master Wall for more information.

Sheathing Applications - Sheathing gaps must be less than 1/4" (6.4 mm). For gaps larger than 1/4" (6.4 mm) WeatherStop Tape or Rollershield Flashing Tape may be used. Gap wood-based sheathing per manufacturers recommendations, typically 1/8" (3.2 mm) minimum.

Mixing - Thoroughly stir Rollershield into a homogenous consistency. Do not add water, over mix, or add accelerators or retarders to Rollershield.

Application - Rollershield is applied by first treating the joints and fastener locations where sheathing is used, then coating the entire surface using brush, roller, trowel or airless spray equipment techniques. When using a foam roller, a maximum 3/4" (19 mm) nap is recommended. Apply Rollershield in an even, continuous coat, maintaining a wet edge of approximately 15 mils thickness. Oriented Strand Board and other porous substrates require two (2) coats of Rollershield. For moisture protection, Rollershield must be applied as a continuous barrier of 10 mils dry thickness with no breaks or skips, although some areas will appear lighter than others due to the application process. The Rollershield application need not look like a painted surface.

Joint Treatment—Apply a thin layer of Rollershield to the joints and embed Rollershield Flashing Tape into the wet mixture and trowel smooth. Alternatively place and center Rollershield Mesh over all joints, corners and gaps in the substrate. Immediately embed Rollershield into the reinforcing mesh and spot fasteners using a paint brush or trowel and allow to dry.

Approved Substrates

Exterior gypsum sheathing
(ASTM C1396)

Dens Glass Gold®

GlasRoc®

FiberBond®

Gold Bond e2xp®

Durock®

PermaBase®

ProTEC®

Util-A-Crete®

Concrete

Brick

Masonry

Exterior Plywood

Oriented Strand Board

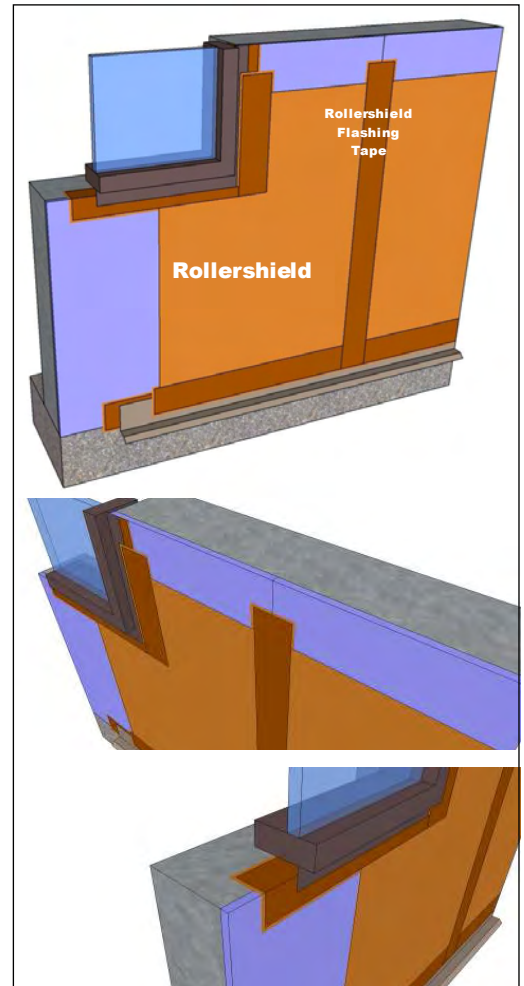
Others approved in writing

Rollershield may be flashed into window, door and other openings using the same techniques for sheathing applications. Any remaining gaps should be filled with Master Wall Trowelshield or Trowelshield and Mesh may be used as the joint treatment.

Wall Treatment—Apply Rollershield to the wall surface using the foam roller, trowel or by spray applying and backrolling to a uniform thickness of 10 mils with no pinholes or voids.

Clean Up—Tools and equipment can be cleaned with soapy water when Rollershield is wet.

Limitations - Not for use as an exterior finish.



Spray Application

Rollershield is compatible with GRACO and Titan airless spray equipment with the following specifications:

- Minimum 1 gallon per minute output.
- Minimum hose width of 3/8 inch.
- Minimum tip size of 0.027–0.031.

Minimum pressure requirement to spray of 2,000 psi at the gun with an airless sprayer rated no lower than 3,300 psi. Remove all filters in sprayer and gun before application.

Hopper Gun: 3/16"-1/4" (6-6.5 mm) orifice, 23-25 psi.

Information contained in this product data sheet conforms to the standard detail recommendations and specifications for the installation of Master Wall Inc.® products and is presented in good faith. Master Wall Inc.® assumes no liability, expressed or implied as to the architecture, engineering, or workmanship of any project. This information may be concurrent with, or superseded by other applicable documents, such as specifications and details. Contact Master Wall Inc.® for the most current product information. ©2016 Master Wall Inc.®

 **Master Wall Inc.®**
Building a Culture of Excellence
masterwall.com

PO Box 397 • Fortson • GA • 31808 • 800-755-0825 • Tech: 800-760-2861



Rollershield Flashing Tape

Systems

Rollershield Drainage EIFS
Rollershield LAB
Trowelshield Drainage EIFS
Trowelshield LAB

Stocking Locations:

30058 • 77474 • 84651

Tape Size

Rollershield Flashing Tape is available in the following size rolls:

4"x180' (10.2cm x 54.9m)

6"x180' (15.2cm x 54.9m)

9"x180' (22.9cm x 54.9m)

Packaging

4": 18 rolls per case.

6" & 9": 12 rolls per case.

Coverage Estimate

(4x8 sheets)

Square Footage x 0.37 = linear feet of tape

Add linear footage around windows, doors and other openings.

(coverage is not guaranteed)

Rollershield Flashing Tape is a lightweight roll flashing material with superior strength and the ability to bridge most gaps or voids common in construction.

Embedded into wet Rollershield or Trowelshield, it is used at flashing transitions with

Master Wall® Rollershield air & water barrier applications. The tape easily embeds into wet Rollershield and dries to a highly reinforced yet flexible flashing.

- **Lightweight**
- **Embeds easily**
- **Thin, won't build up wall surface**



M **Master Wall Inc.®**
Building a Culture of Excellence

masterwall.com

PO Box 397 • Fortson • GA • 31808 • 800-755-0825 • Tech: 800-760-2861



Rollershield Flashing Tape

Application Procedure

General—The substrate must be clean, dry, structurally sound and free of efflorescence, oil, grease, form release agents and curing compounds. Test painted surfaces to verify bond.

Job Conditions - Air and substrate temperature for application of Rollershield Flashing Tape must be 40°F (5°C) or higher. Follow Rollershield or Trowelshield temperatures and condition requirements.

Temporary Protection – Protect from weather until the Rollershield/Trowelshield products have set up.

Surface Preparation - Surface temperature must be above 40°F (5°C). Surface must be cured, clean, dry, structurally sound and free of efflorescence, oil, grease, form release agents, and curing compounds.

Installation

General - Rollershield Flashing Tape is embedded into wet Rollershield or Trowelshield at flashing transitions (sheathing to framing, flashing, penetrations, etc.) and at sheathing board joints. Apply a generous layer of either product using a trowel, brush or roller and immediately embed the Rollershield Flashing Tape into the product and draw it tight and smooth working from the center to the edges.

Windows – The unique properties of the Rollershield or Trowelshield air/water barrier system allows window flashing prior to the Rollershield wall application. Apply Rollershield at least 2” (51 mm) either side of the window opening. Use a “butterfly” at corners to complete the application making sure it covers all corner joints. For best results make sure the Rollershield covers the entire head, jamb and sill areas. The use of sill wedges or water stops is encouraged.

Sheathing Applications — Apply Rollershield at least 2” (51 mm) either side of the sheathing board joint. Immediately embed the Rollershield Flashing Tape into the wet Rollershield and smooth with a trowel, centering it over the joint. Lap Rollershield Mesh Tape 2” (51 mm) minimum

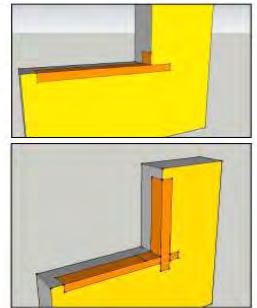
Rollershield/Trowelshield field application can begin as soon as the Rollershield is dry to the touch.

Sheathing Application



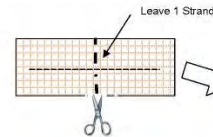
Window Flashing Application

1. Start at the base of the window. Apply wet Rollershield using a trowel, brush or roller to the sill and face of the wall.
2. Center and embed Rollershield Flashing Tape into the wet Rollershield and extend up the wall 3” (75 mm) up the jamb and onto the face of the wall. Smooth using trowel, brush or roller.
3. Apply jamb flashing in a similar manner extending the flashing 3” min. onto the sill surface.
4. Apply head flashing in a similar manner.



RSLAB-09 Basic Flashing – Method A

1. Start at the base of the window. Apply wet Rollershield using a trowel, brush or roller to the sill and face of the wall.
2. Center and embed Rollershield Flashing Tape into the wet Rollershield. Smooth using trowel, brush or roller.
3. Apply jamb flashing in a similar manner.
4. Apply head flashing in a similar manner.
5. Apply wet Rollershield at all corners and embed diagonal reinforcement.



RSLAB-10 Basic Flashing – Method B

Information contained in this product data sheet conforms to the standard detail recommendations and specifications for the installation of Master Wall Inc.® products and is presented in good faith. Master Wall Inc.® assumes no liability, expressed or implied as to the architecture, engineering, or workmanship of any project. This information may be concurrent with, or superseded by other applicable documents, such as specifications and details. Contact Master Wall Inc.® for the most current product information. ©2016 Master Wall Inc.®



Master Wall Inc.®
Building a Culture of Excellence
masterwall.com



Master Wall, Inc
Building a Culture of Excellence

Rollershield

Liquid Applied Barrier

5 Year Material Limited Warranty

Master Wall Inc. warrants the properly designed and installed Rollershield Liquid Applied Air/Water Barrier and materials for 5 years from the date of installation. Master Wall Inc.'s exclusive liability under this warranty is to supply replacement materials, if it is shown that the materials supplied by Master Wall Inc., were defective when installed by the Master Wall Inc. certified applicator. Remedies shall be solely determined by Master Wall Inc. and no other warranties are expressed or implied. For a valid warranty, the system and products must be installed in accordance with Master Wall Inc.'s written recommendations, specifications, details, bulletins and other project-specific written recommendations. Master Wall Inc. must be notified in writing within 10 business days of the original discovery of the defect.

Master Wall Inc., is not responsible for structural conditions, design conditions beyond those noted in our literature, architecture, engineering or workmanship of any project. Drainage Systems are warranted to drain incidental water for the warranty period. Materials must be properly stored and applied in a timely manner. Workmanship, aesthetics and installation are beyond the scope of this warranty as are any deviations from Master Wall Inc. Documents not specifically approved in writing.

Abuse, misuse, excessive weather or environmental conditions beyond what the products or systems have been tested, designed or approved for is expressly limited. Certain colors with organic pigments are less fade-resistant than others. The building, system and products must be properly maintained in accordance with Master Wall Inc., documents, local environmental conditions and good building practices. In no case is Master Wall Inc. responsible for incidental and consequential damages.

This warranty becomes effective only when all bills for the components of the system have been paid.

Except as stated, Master Wall, Inc., expressly disclaims any warranty of merchantability or fitness for a particular purpose. The above remedies are to be deemed exclusive.

Project:

Applicator:

Warranty Date:

This is not the final warranty. For a valid warranty click on the support tab at masterwall.com and request a warranty. Warranties are not valid until issued.



Rollershield LAB – Liquid-applied Air/Water Barrier Section 07 27 00



Master Wall Inc.®
PO Box 397
Fortson, GA 31808
706-569-0092
800-755-0825
www.masterwall.com

Master Wall Guide Specification RSLAB Rollershield LAB

PART I – GENERAL

1.01 SUMMARY

A. This document is to be used in preparing specifications for projects utilizing the Master Wall Inc.® Rollershield Liquid-applied Air/Water Barrier (LAB) a 100% acrylic based liquid or fluid applied air and water barrier designed with low VOC and approved where a water barrier or flashing is required. Related Master Wall Inc.® documents:

1. Master Wall Inc.® Rollershield System Data Sheet
2. Master Wall Inc.® Rollershield System Application Instructions
3. Master Wall Inc.® Rollershield System Installation Details
4. Master Wall product data sheets

B. Related Sections

1. Unit Masonry – Section 04200
2. Concrete – Sections 03300 and 03400
3. Light Gauge Cold Formed Steel Framing – Section 05400
4. Wood Framing – Section 06100
5. Sealant – Section 07900
6. Flashing – Section 07600

1.02 SUBMITTALS

- A. Manufacturer's specifications, details, installation instructions and product data
- B. Manufacturer's code compliance report
- C. Manufacturer's standard warranty
- D. Applicator's industry training credentials
- E. Samples for approval as directed by architect or owner
- F. Prepare and submit project-specific details (when required by contract documents)



Rollershield LAB – Liquid-applied Air/Water Barrier

Section 07 27 00

1.03 REFERENCES

A. ASTM Standards:

- ASTM C297 Tensile Bond
- ASTM C1177 Standard Specification for Glass Mat Gypsum Substrate for Use as Sheathing
- ASTM C1396 (formerly C 79) Standard Specification for Gypsum Board
- ASTM D1784 Specification for Rigid Poly (Vinyl Chloride) (PVC) and Chlorinated Poly (Vinyl Chloride) (CPVC) Compounds
- ASTM E84 Standard Test Method for Surface Burning Characteristics of Building Materials
- ASTM E72 Racking Resistance
- ASTM E96 Test Methods for Water Vapor Transmission of Materials
- ASTM E330 Test Method for Structural Performance of Exterior Windows, Doors and Curtain Walls by Uniform Static Air Pressure Difference
- ASTM E331 Test Method for Water Penetration of Exterior Windows, Skylights, Doors and Curtain Walls by Uniform Static Air Pressure Difference.
- ASTM E1233 Structural Performance
- ASTM E2134 Test Method for Evaluating the Tensile-Adhesion Performance of an Exterior Insulation and Finish System (EIFS)
- ASTM E2178 Test Method for Air Permeance of Building Materials
- ASTM E2357 Standard Test Method for Determining Air Leakage of Air Barrier Assemblies
- ASTM E2485 Freeze/Thaw Resistance
- ASTM E2568 Standard Specification for Class PB Exterior Insulation and Finish Systems
- ASTM E2570 Test Method for Water-Resistive (WRB) Coatings used Under Exterior Insulation and Finish Systems (EIFS) with Drainage

B. Building Code Standards

- AC212 Restrained Environmental Cycling, UV Exposure and Aging
- AC235 Acceptance Criteria for EIFS Clad Wall Assemblies (November, 2009)

C. National Fire Protection Association (NFPA) Standards

- NFPA 268 Standard Test Method for Determining Ignitibility of Exterior Wall Assemblies Using a Radiant Heat Energy Source
- NFPA 285 Standard Method of Test for the Evaluation of Flammability Characteristics of Exterior Non-Load Bearing Wall Assemblies containing Combustible Components Using the Intermediate-Scale, Multistory Test Apparatus

D. Other Referenced Documents

- American Association of Textile Chemists and Colorists AATCC-127 Water Resistance: Hydrostatic Pressure Test
- APA Engineered Wood Association E30, Engineered Wood Construction Guide
- UES Evaluation Report 384, Rollershield Water Barrier



Rollershield LAB – Liquid-applied Air/Water Barrier

Section 07 27 00

1.04 SYSTEM DESCRIPTION

- A. General: The Master Wall Inc.® Rollershield LAB is a fluid applied air and water barrier application. The product shall be applied over an approved substrate in accordance with the Rollershield LAB application Details.
- B. Methods of Installation
1. Field Applied: The Rollershield LAB System is applied to the substrate system in place.
 2. Panelized: The Rollershield LAB System is shop-applied to the prefabricated wall panels.
- C. Design Requirements
1. Acceptable substrates for the Rollershield LAB System shall be:
 - a. Exterior sheathing having a water-resistant core with fiberglass mat facers meeting ASTM C 1177.
 - b. Exterior fiber reinforced cement or calcium silicate boards.
 - c. APA Exterior or Exposure 1 Rated Plywood, Grade C-D or better, nominal 12.7 mm (1/2 in), minimum 4-ply.
 - d. Unglazed, unpainted brick, cement plaster, concrete, or masonry.
 - e. APA Exposure 1 rated Oriented Strand Board (OSB) or plywood, nominal 12.7 mm (1/2 in).
 - f. Other substrates approved in writing from the manufacturer.
 2. Deflection of substrate systems shall not exceed 1/240 times the span.
 3. The substrate shall be flat within 6.4 mm (1/4 in) in a 3.05 m (10 ft) radius.
 4. The slope of inclined surfaces shall not be less than 6:12, and the length shall not exceed 305 mm (12 in).
 5. Expansion Joints
 - a. Design and location of expansion joints in the Rollershield LAB System is the responsibility of the project designer and shall be noted on the project drawings. As a minimum, expansion joints shall be placed at the following locations:
 - 1) Where expansion joints occur in the substrate system.
 - 2) Where building expansion joints occur.
 - 3) At floor lines in wood frame construction (Reference Technical Bulletin #140).
 - 4) At floor lines of non-wood framed buildings where significant movement is expected.
 - 5) Where the Rollershield LAB System abuts dissimilar materials.
 - 6) Where the substrate type changes
 - 7) Where prefabricated panels abut one another
 - 8) Where significant structural movement occurs such as changes in roofline, building shape or structural system.
 6. Terminations
 - a. Interior foam expanding foam sealant may be required behind penetration openings.
 - b. Sealants
 - 1) Shall be manufactured and supplied by others.
 - 2) Shall be compatible with Rollershield LAB System materials.
 7. Vapor Retarders and barriers – The use and location of vapor retarders and/or barriers within a wall assembly is the responsibility of the project designer and shall comply with local building code requirements.
 8. Flashing: Shall be provided at all roof-wall intersections, windows, doors, chimneys, decks, balconies and other areas as necessary to prevent water from entering behind the Rollershield LAB System.



Rollershield LAB – Liquid-applied Air/Water Barrier

Section 07 27 00

1.05 PERFORMANCE REQUIREMENTS

A. Rollershield LAB System shall have been tested as follows:

Air/Moisture Barrier Performance

TEST	METHOD	CRITERIA	RESULT
1. Water Penetration Resistance	AATCC 127 (Water Column) ICC ES (AC 212)*	Resist 21.6 in (55 cm) water for 5 hours before and after aging	Pass
2. Water Penetration Resistance after Cyclic Wind Loading	ASTM E1233 / ASTM E331	No water penetration beyond the inner-most plane of the wall after 15 minutes at 137 Pa (2.86 psf)	No water penetration
3. Water Resistance Testing	ASTM D2247 ICC ES (AC 212)*	Absence of deleterious effects after 14 day exposure	Pass: Plywood Cement Board, OSB, Exterior Gypsum (ASTM C79/C1396) and Dens Glass Gold (ASTM C1377) substrates
4. Water Vapor Transmission	ASTM E96 Method B (Water Method)	Measure	30 perms (Rollershield) 12 perms (Trowelshield)
5. Air Leakage (material)	ASTM E2178	≤ 0.004 cfm/ft ² at 1.57 psf (0.02 L/s•m ² at 75 Pa)	0.0002 cfm/ft ²
6. Air Leakage (assembly)	ASTM E2357	≤ 0.04 cfm/ft ² (0.2 L/s•m ²) @ 75 Pa	0.003 L/s.m ² @ 75 Pa 0.02 L/s.m ² @ 300 Pa
7. Racking	ASTM E72 ICC ES (AC 212)*	No cracking in field, at joints or interface with flashing at net deflection of 3.2 mm (1/8 inch)	Pass
8. Freeze-thaw	ASTM E2485/ICC-ES Proc. ICC ES (AC 212)*	No deleterious effects after 10 cycles	Pass: Plywood, Cement Board, OSB, Exterior Gypsum (ASTM C79/C1396) and Dens Glass Gold (ASTM C1377) substrates
9. UV Exposure	ICC ES Proc. ICC ES (AC 212)*	210 hours of exposure	Pass
10. Surface Burning	ASTM E84	Flame Spread 0 – 25 for NFPA Class A, UBC Class I	Flame Spread: 5 Smoke Density: 5
11. Tensile Adhesion	ASTM C297	>15 psi (103 kPa)	Dens Glass Gold 31 (215), Exterior Gypsum 28 (194), OSB 40 (277), Plywood 79 (563), Cement Board 70 (485), Copper 185 (1282), Galvanized steel 180 (1248), PVC 168 (1165), Aluminum 184 (1275), Coated Aluminum 203 (1407), Stainless Steel 183 (1269)

* AC212 – Acceptance Criteria for Water-Resistive Coatings Used as Water-Resistive Barriers over Exterior Sheathing, also referred to as ASTM E 2570



Rollershield LAB – Liquid-applied Air/Water Barrier Section 07 27 00

LAB Weather Resistance and Durability Performance*

TEST	METHOD	CRITERIA	RESULTS
1. Transverse Wind Load	ASTM E330	Withstand positive and negative wind loads as specified by the building code.	Pass. Assemblies vary from 68-287 psf*

* Ultimate wind loads – contact Master Wall for specific assemblies.

Air/Moisture Barrier and LAB Fire Performance

TEST	METHOD	CRITERIA	RESULT
1. Intermediate Scale Multi-Story Fire Test	NFPA 285 (formerly UBC Standard 26-9)	<ol style="list-style-type: none"> Resistance to vertical spread of flame within the core of the panel from one story to the next Resistance to flame propagation over the exterior surface Resistance to vertical spread of flame over the interior surface from one story to the next Resistance to significant lateral spread of flame from the compartment of fire origin to adjacent spaces 	Pass
2. Surface Burning (individual components)	ASTM E84	Individual components shall each have a flame spread of 25 or less, and smoke developed of 450 or less	Flame Spread: 0 Smoke Developed: 0

1.06 QUALITY ASSURANCE

A. Qualifications

- System Manufacturer: Shall be Master Wall Inc.®. All materials shall be manufactured or sold by Master Wall Inc.® and shall be purchased from Master Wall Inc.® or its authorized distributors.
- Contractor: Shall be knowledgeable in the proper installation of the Master Wall Inc.® Rollershield LAB System. Additionally, the contractor shall possess a current Master Wall Inc.® applicator certificate issued by Master Wall Inc.®

B. Regulatory Requirements

- Continuous insulation if used shall be separated from the interior of the building by a minimum 15-minute thermal barrier.
- The use and maximum thickness of continuous insulation shall be in accordance with the applicable building codes.

C. Certification

- The Rollershield LAB System shall be recognized for the intended use by the applicable building code(s).

D. Mock-Up

- The contractor shall, before the project commences, provide the owner/architect with a mock-up for approval.
- The mock-up shall be of suitable size as required to accurately represent the products being installed, as well as each color and texture to be utilized on the project.
- The mock-up shall be prepared with the same products, tools, equipment and techniques required for the actual application. The finish used shall be from the same batch that is being used on the project.



Rollershield LAB – Liquid-applied Air/Water Barrier Section 07 27 00

4. The approved mock-up shall be available and maintained at the job site.
5. For panelized construction, the mock-up shall be available and maintained at the panel fabrication location.

1.07 DELIVERY, STORAGE AND HANDLING

- A. All Master Wall Inc.® materials shall be delivered to the job site in the original, unopened packages with labels intact.
- B. Upon arrival, materials shall be inspected for physical damage, freezing, or overheating. Questionable materials shall not be used.
- C. Deliver all materials in original unopened packages with labels intact. Verify all quantities, colors, and textures against bill of lading.
- D. Store all materials protected from direct exposure to weather conditions and at temperatures not less than 40°F (4°C) or greater than 110°F (43°C).
- E. Material Safety Data Sheets (MSDS) or Safety Data Sheets (SDS) shall be supplied for the components of the LAB and be available at the job site.

1.08 PROJECT CONDITIONS

- A. Ambient air temperatures shall be 40°F (4°C) or greater and rising at the time of installation of the Master Wall Inc.® products and shall remain at 40°F (4°C) or greater for at least 24 hours after application.
- B. Provide supplemental heat and protection as required when the temperature and conditions are not in accordance with installation requirements. Sufficient ventilation and time shall be provided to ensure that materials have sufficiently dried prior to removing supplemental heat.
- C. Adequate protection shall be provided to prevent weather conditions (humidity, temperature, and precipitation) from having an affect on the curing or drying time of Master Wall Inc.® materials.
- D. Adjacent materials and the Rollershield LAB System shall be protected during installation and while curing from weather and shall be protected from site damage.
- E. Coordinate installation of the Rollershield LAB System with related work specified in other sections to ensure that the wall assembly is protected to prevent water from getting behind the system. The cap flashing shall be installed as soon as possible after the finish coat has been applied. When this is not possible, temporary protection shall be provided immediately in this area.
- F. All sealant work shall be installed in a timely manner. Protect open joints from water intrusion during construction with backer rod, or temporary covering, until permanently sealed.
- G. Sufficient manpower and equipment shall be employed to ensure a continuous operation, free of cold joints, scaffolding lines, and texture variations, etc.
- H. Existing Conditions - The contractor shall have access to electric power, clean water, and a clean work area at the location where the Master Wall Inc.® materials are to be applied.
- I. Exposure Limitations – Rollershield LAB is limited to a maximum of 30 days exposure when Rollershield Drainage EIFS is to be adhered to the product. The surface must be clean and dry prior to application of EIFS. Under all other cladding products the exposure limitation is a maximum of six months.

1.09 SEQUENCING AND SCHEDULING

- A. Installation of the Rollershield System shall be coordinated with other construction trades.
- B. Sufficient manpower and equipment shall be employed to ensure a continuous operation.

1.10 LIMITED MATERIALS WARRANTY

- A. Provide a manufacturer's warranty against defective material upon request.

1.11 MAINTENANCE

- A. Maintenance and repair shall follow the procedures noted in Master Wall Inc.® Technical Bulletins #112 and #129.



Rollershield LAB – Liquid-applied Air/Water Barrier

Section 07 27 00

PART II – PRODUCTS

2.01 MANUFACTURER

- A. All components of the Rollershield LAB System shall be supplied or obtained from Master Wall Inc.® or its authorized distributors. Substitutions or additions of materials other than specified will void the warranty.

2.02 MATERIALS

- A. Weather Resistive Barrier
1. Rollershield: A flexible polymer-based roll applied air barrier and waterproof membrane.
- B. Sheathing Joint Treatment/Transition Treatment
1. Rollershield Flashing Tape, 4" (104 mm) width.
- C. Exterior Sealants (Rollershield to Penetrating Item): Single part polyurethane conforming to Federal Specification TT-S-00230C, Type II, Class A; ASTM C 920, Type S, Grade NS, Class 25, Use NT, M, A, G and I.
1. BASF Sonolastic® NP1™
 2. Sikaflex® One Part Polyurethane
 3. Tremco Vulkem Polyurethane Sealant
- D. Interior Sealants: A multi-purpose, professional, low-expansion construction adhesive and gap and crack filler. One component polyurethane foam that cures by absorbing water vapor from the air with no CFC/HCFC.
1. Wind-Lock Foam-2-Foam Adhesive
 2. Illbruck FM230 Window Seal Gun Grade Foam

PART III – EXECUTION

3.01 EXAMINATION

- A. Prior to installation of the Rollershield LAB System, the contractor shall verify that the substrate:
1. Is of a type listed.
 2. Is flat within 6.4 mm (1/4 in) in a 3 m (10 ft) radius.
 3. Is sound, dry, connections are tight, has no surface voids, projections or other conditions that may interfere with the Rollershield System installation or performance.
- B. Prior to the installation of the Rollershield LAB System, the architect or general contractor shall insure that all needed flashings and other waterproofing details have been completed, if such completion is required prior to the Rollershield application. Additionally, the Contractor shall ensure that:
1. Metal roof flashing has been installed in accordance with Asphalt Roofing Manufacturers Association (ARMA) Standards.
 2. Openings are flashed in accordance with the Rollershield LAB System Installation Details or as otherwise necessary to prevent water penetration.
 3. Chimneys, Balconies, and Decks have been properly flashed.
 4. Windows, Doors, etc. are installed and flashed per manufacturer's requirements and the Rollershield LAB System Installation Details.
- C. Prior to the installation of the Rollershield LAB System, the contractor shall notify the general contractor, and/or architect, and/or owner of all discrepancies.

3.02 PREPARATION

- A. Rollershield LAB materials shall be protected by permanent or temporary means from inclement weather and other sources of damage prior to, during, and following application until completely dry.
- B. Protect adjoining work and property during Rollershield LAB installation.
- C. The substrate shall be prepared as to be free of foreign materials, such as, oil, dust, dirt, form release agents, efflorescence, paint, wax, water repellents, moisture, frost and any other condition that inhibit adhesion.



Rollershield LAB – Liquid-applied Air/Water Barrier Section 07 27 00

3.03 GENERAL GUIDELINES

- A. The system shall be installed in accordance with the current Master Wall Inc.® Rollershield LAB System Application Instructions.

3.04 FIELD QUALITY CONTROL

- A. The contractor shall be responsible for the proper application of the Rollershield LAB materials.
- B. Master Wall Inc.® assumes no responsibility for on-site inspections or application of its products.
- C. If required, the contractor shall certify in writing the quality of work performed relative to the substrate system, details, installation procedures, workmanship and as to the specific products used.

3.05 ROLLERSHIELD LAB APPLICATION

- A. Mixing
 - 1. Mix the products following the instructions on the product data sheets.
 - 2. Additives shall not be added to Master Wall Inc.® materials unless written approval has been received from Master Wall Inc.®
- B. Preparation
 - 1. Protect contiguous work from damage during application of the Rollershield LAB. Temporary covering may be required to prevent over spray or splattering of coatings on other work.
 - 2. Protect substrate from inclement weather during installation. Prevent infiltration of moisture behind the wall.
 - 3. Coatings shall not be installed when ambient air temperature is below 40°F (4°C). The temperature shall remain at or above 40°F (4°C) during mixing, application and until materials have dried.
 - 4. Flashings shall be installed as required by construction documents and Master Wall Inc.® details in a manner to prevent the intrusion of water behind the wall system. All flashing materials should direct the water to the exterior face of the finished wall system.
- C. Installation, General
 - 1. Reference architectural details for full wall system requirements.
 - 2. Comply with the manufacturers' current published instructions, (specifications, details, data sheets and technical bulletins) for the installation of the Rollershield LAB.
 - 3. Comply with local building codes.
 - 4. Verify that all flashings and other items are in place.
- D. Rollershield Liquid-applied Air/Water Barrier (LAB) Application
 - 1. The substrate must be approved by Master Wall Inc.®, clean, dry, structurally sound and free of efflorescence, oil, grease, form release agents and curing compounds or anything that would affect bond. Painted surfaces are not acceptable and must be removed. Substrates must be flat and free of fins or planar irregularities greater than 1/4" in 10'-0" (6.35 mm in 3.05m).

Concrete – Must have cured a minimum of 28 days prior to the application of Rollershield LAB. If form release agents or curing compounds exist on the surface, they must be removed with a solution of muriatic acid or similar product (with appropriate precautions). Remove any residual acid by flushing with water.

Brick/Masonry – If joints are not struck flush, multiple coats may be required. Contact Master Wall for more information.

Sheathing Applications - Sheathing gaps must be less than 1/4" (6.4 mm). Gap wood-based sheathing per manufacturer's recommendations, typically 1/8" (3.2 mm) minimum.

- 2. Stir the Rollershield LAB to a homogeneous consistency.
- 3. Rollershield LAB is applied by first treating the joints and fastener locations, then coating the entire surface using brush, roller, trowel or airless spray equipment techniques.
- 4. Apply a thin layer of Rollershield at all joints, corners, openings or transitions. While the Rollershield is still wet, center Rollershield Flashing Tape and immediately embed it into the wet Rollershield. Recoat as necessary to ensure full embedment. Spot fasteners using a paint brush or trowel and allow to dry.



Rollershield LAB – Liquid-applied Air/Water Barrier

Section 07 27 00

Rollershield LAB may be flashed into window, door and other openings using the same techniques.

Reference details for flashing options.

5. Roll or spray apply Rollershield over the prepared sheathing to a nominal uniform thickness of 15 mils wet, 10 mils dry with no pinholes or voids. When using a foam roller, a maximum $\frac{3}{4}$ " (19 mm) nap is recommended. Apply Rollershield LAB in an even, continuous coat, maintaining a wet edge of approximately 15 mils thickness, 10 mils dry. Oriented Strand Board and other porous substrates require two (2) coats of Rollershield LAB.
 6. Spray Recommendations: Rollershield is compatible with GRACO and Titan airless spray equipment with the following specifications; Minimum 1 gallon per minute output, Minimum hose width of 3/8 inch, Minimum tip size of 0.027–0.031, Minimum pressure requirement to spray of 2,000 psi at the gun with an airless sprayer rated no lower than 3,300 psi. Remove all filters in sprayer and gun before application. Hopper Gun: 3/16"-1/4" (6-6.5 mm) orifice, 23-25 psi.
 7. Rollershield must be applied as a continuous barrier of 10 mils dry thickness with no breaks or skips, although some areas will appear lighter than others due to the application process. The Rollershield application need not look like a painted surface.
 8. Repair any voids or holes with additional coats of Rollershield LAB or spot applications of Trowelshield.
 9. Allow to dry completely before proceeding with installation.
- E. Flashings or Terminations
1. Install flashing terminations as recommended. Apply a thin layer of Rollershield at the transitions. While the Rollershield is still wet, center Rollershield Flashing Tape and immediately embed it into the wet Rollershield. Recoat as necessary to ensure full embedment.
- F. Drying and Curing
1. Provide protection from rain and temperatures below 4^oF (4^oC) for a minimum of 24 hours after application. Longer protection may be necessary during lower temperatures and/or higher humidity conditions.
 2. Once cured, Rollershield may be exposed to the elements as long as 30-days once fully dry but should be covered as soon as practical.

3.06 JOB SITE CLEANUP

- A. Clean work area in accordance with contract documents removing all excess materials, droppings and debris. Clean adjacent surfaces.
- B. Other trades may now install their work – Sheet Metal (Section 07620), Sealants (Section 07900), Mechanical (Section 15000), Electrical (Section 16000).

3.07 PROTECTION

- A. Rollershield LAB System shall be protected from inclement weather and other sources of damage until dry and permanent protection in the form of flashings, sealants, cladding, etc. are installed.

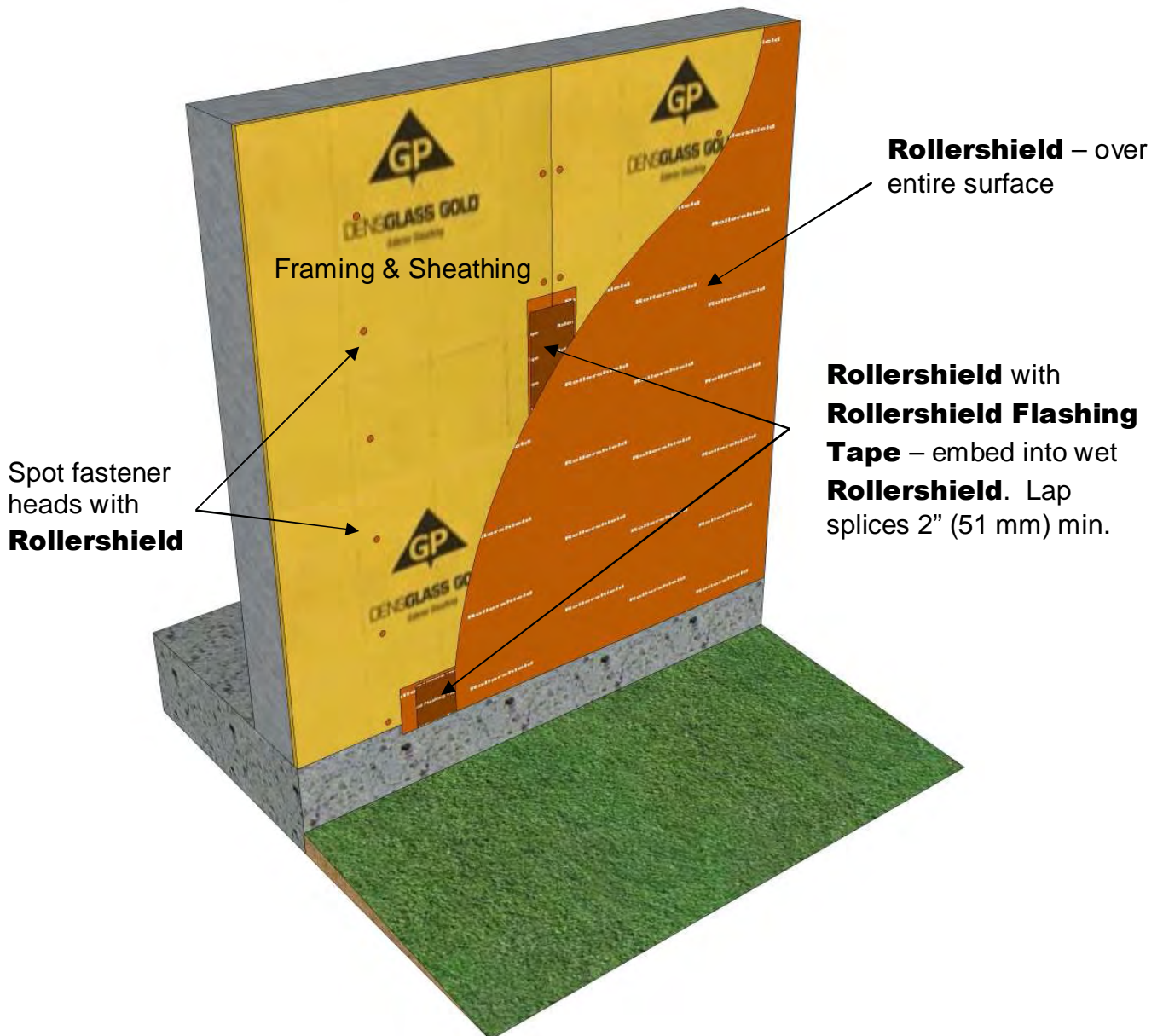
Disclaimer

This Specification is published for general informational purposes only and is not intended to imply that these are the only materials, procedures, or methods, which are available or suitable. Materials, procedures, or methods may vary according to the particular circumstances, local building code requirements, design conditions, or statutory and regulatory requirements. While the information in this specification is believed to be accurate and reliable, it is presented without guarantee or responsibility on the part of Master Wall Inc.®



Rollershield LAB

Liquid Applied Air/Water Barrier



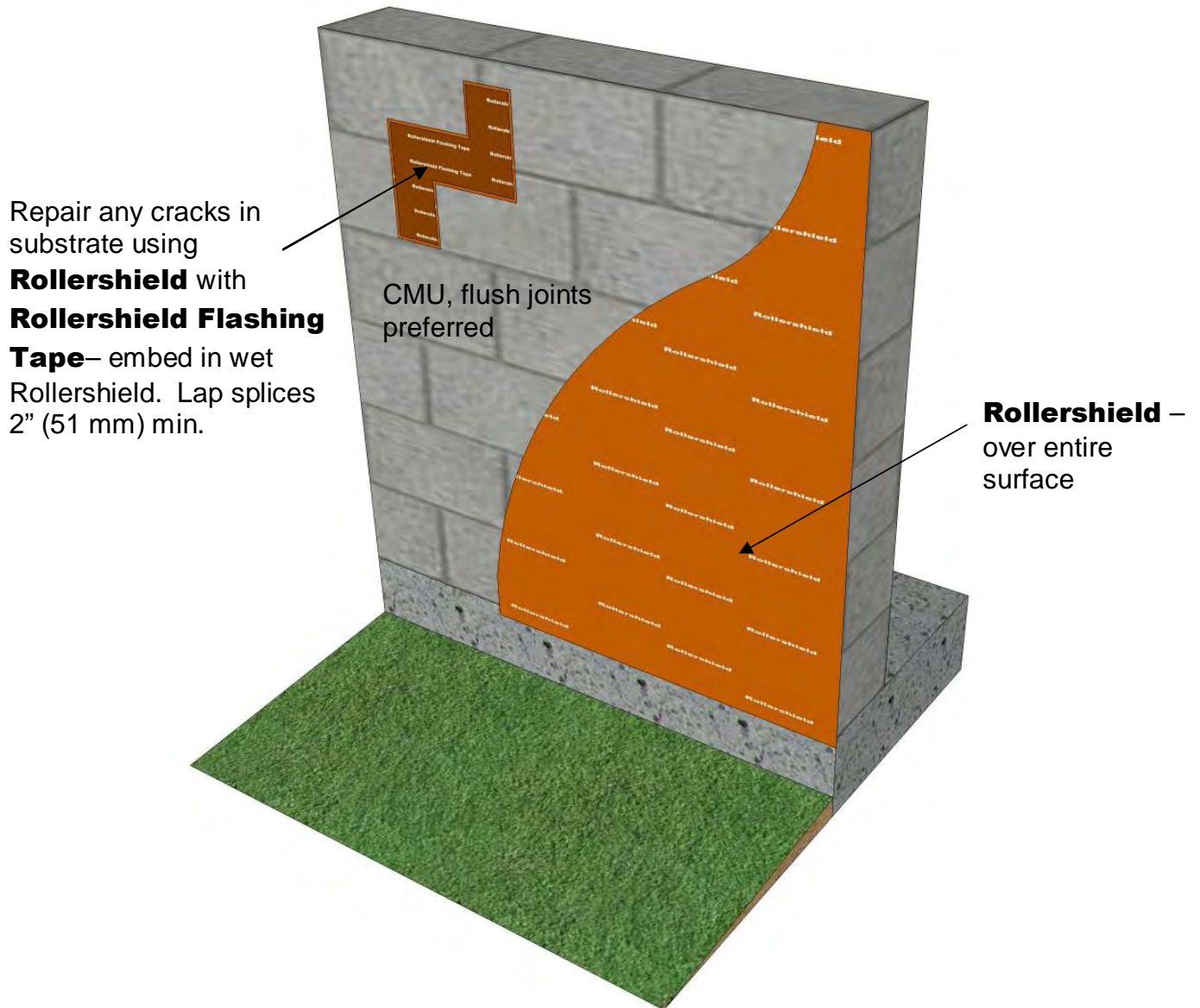
RSLAB-01 Application on Sheathing

These drawings relay the conceptual conditions of Master Wall® Systems and are not the construction drawings. Ultimately the design and detailing of an entire wall system is the responsibility of a professional. These details will guide the design professional in the use of Master Wall® Products. Master Wall disclaims design, warranty or construction intent or responsibility. **Bold or brand name = Master Wall® Product.** ©2014 Master Wall Inc.



Rollershield LAB

Liquid Applied Air/Water Barrier



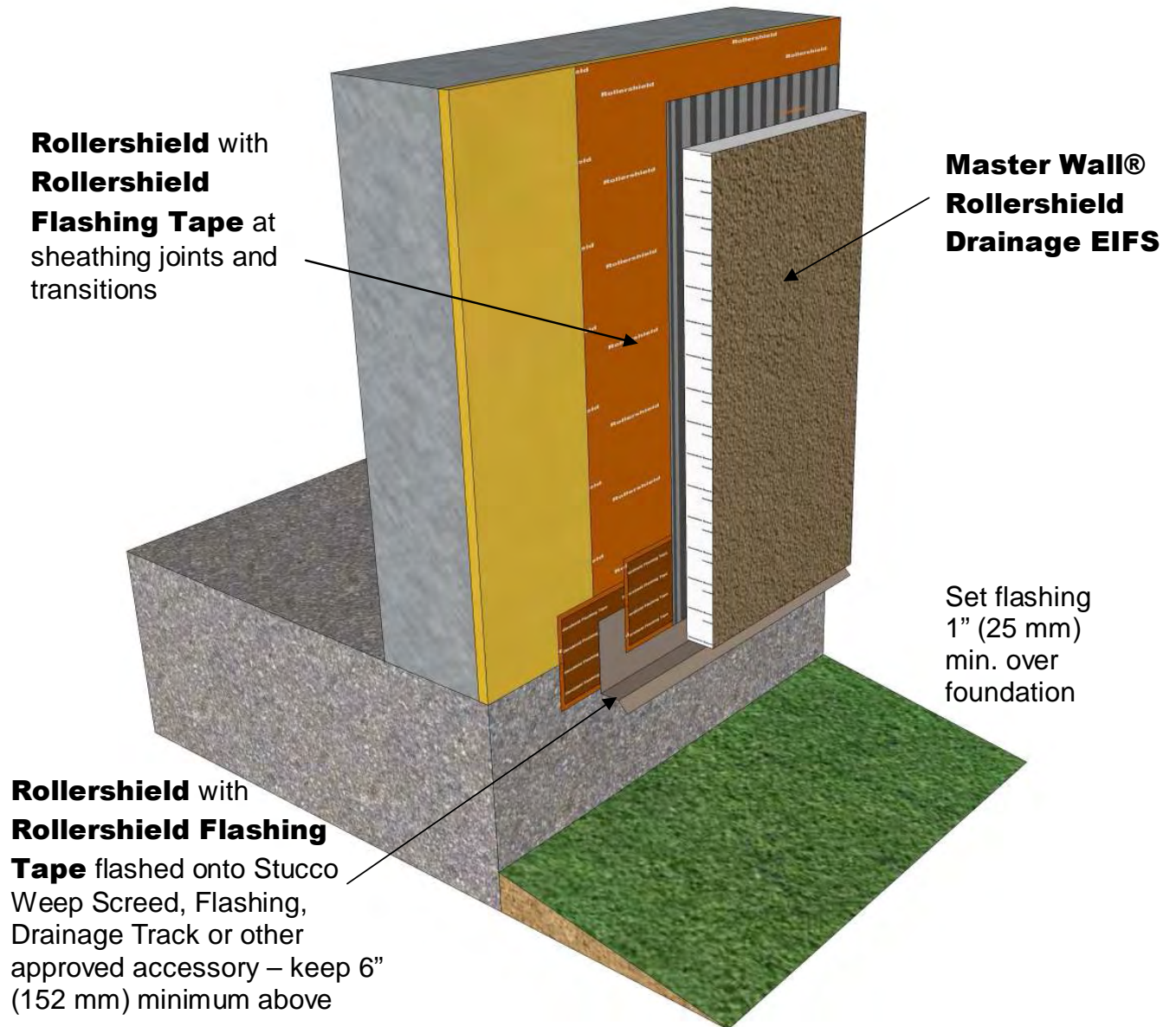
RSLAB-02 Application on CMU, Masonry or Concrete

These drawings relay the conceptual conditions of Master Wall® Systems and are not the construction drawings. Ultimately the design and detailing of an entire wall system is the responsibility of a professional. These details will guide the design professional in the use of Master Wall® Products. Master Wall disclaims design, warranty or construction intent or responsibility. **Bold or brand name = Master Wall® Product.** ©2014 Master Wall Inc.



Rollershield LAB

Liquid Applied Air/Water Barrier



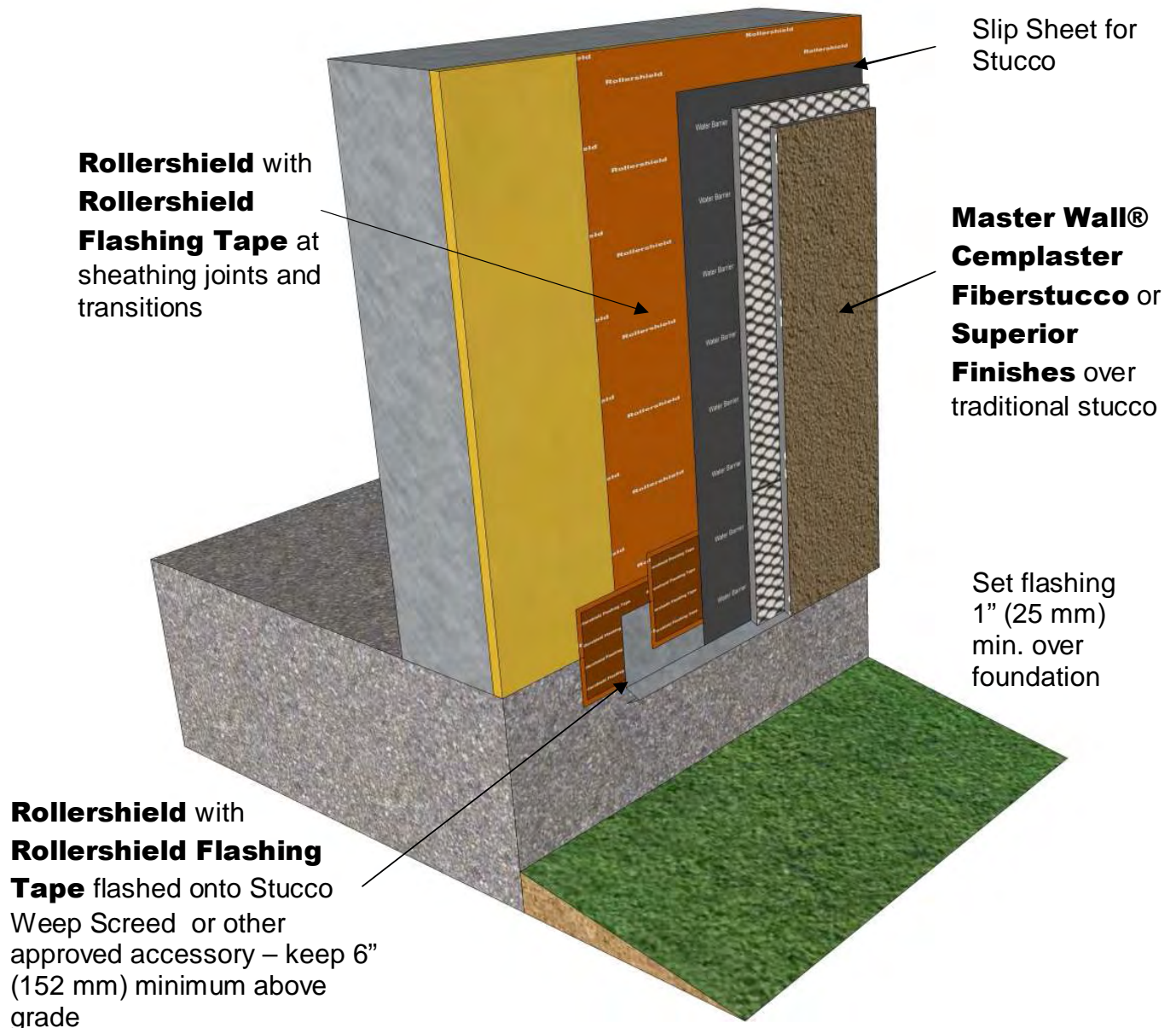
RSLAB-03 EIFS Termination

These drawings relay the conceptual conditions of Master Wall® Systems and are not the construction drawings. Ultimately the design and detailing of an entire wall system is the responsibility of a professional. These details will guide the design professional in the use of Master Wall® Products. Master Wall disclaims design, warranty or construction intent or responsibility. **Bold or brand name = Master Wall® Product.** ©2014 Master Wall Inc.



Rollershield LAB

Liquid Applied Air/Water Barrier



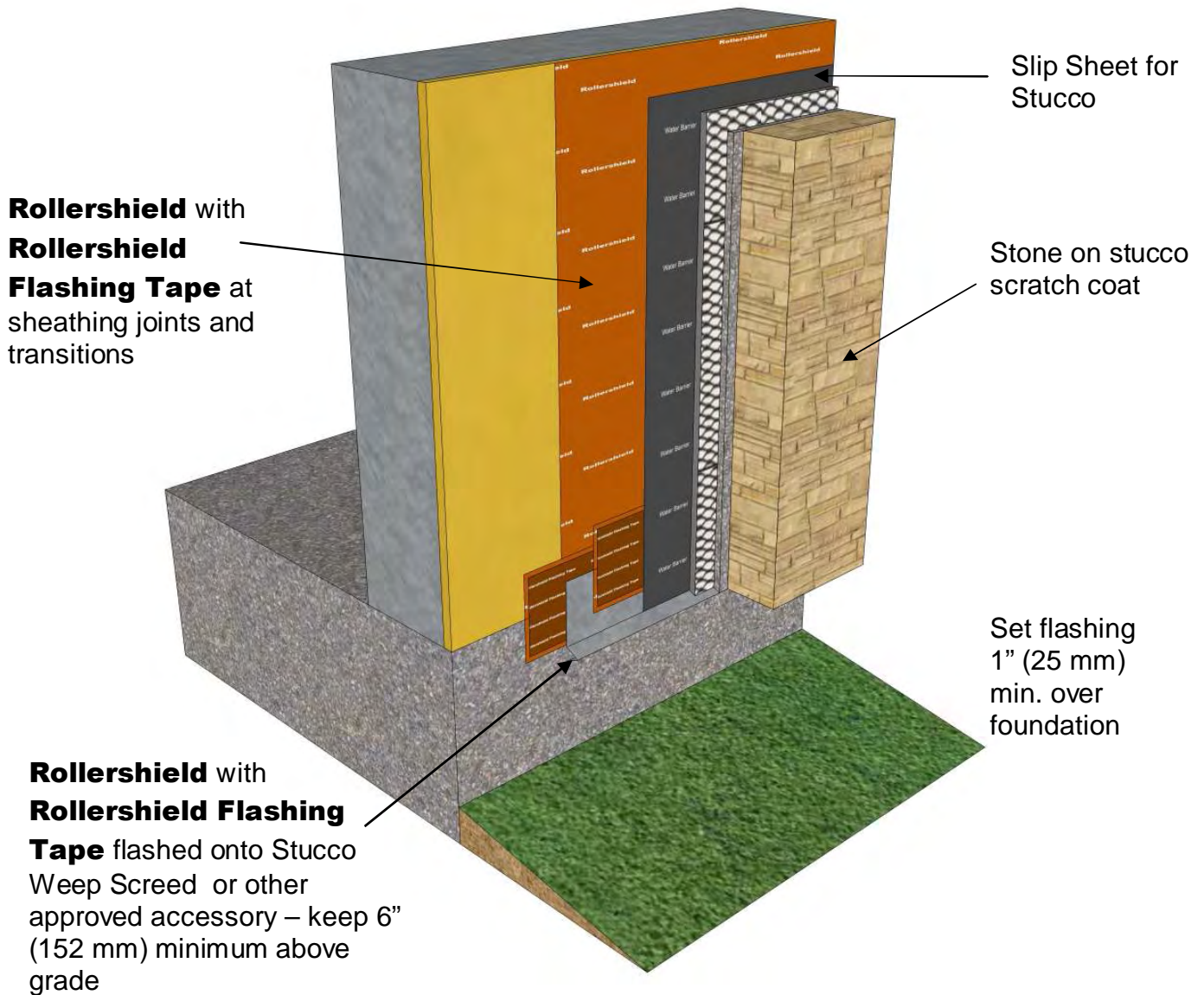
RSLAB-04 Stucco Termination at Foundation

These drawings relay the conceptual conditions of Master Wall® Systems and are not the construction drawings. Ultimately the design and detailing of an entire wall system is the responsibility of a professional. These details will guide the design professional in the use of Master Wall® Products. Master Wall disclaims design, warranty or construction intent or responsibility. **Bold or brand name = Master Wall® Product.** ©2014 Master Wall Inc.



Rollershield LAB

Liquid Applied Air/Water Barrier



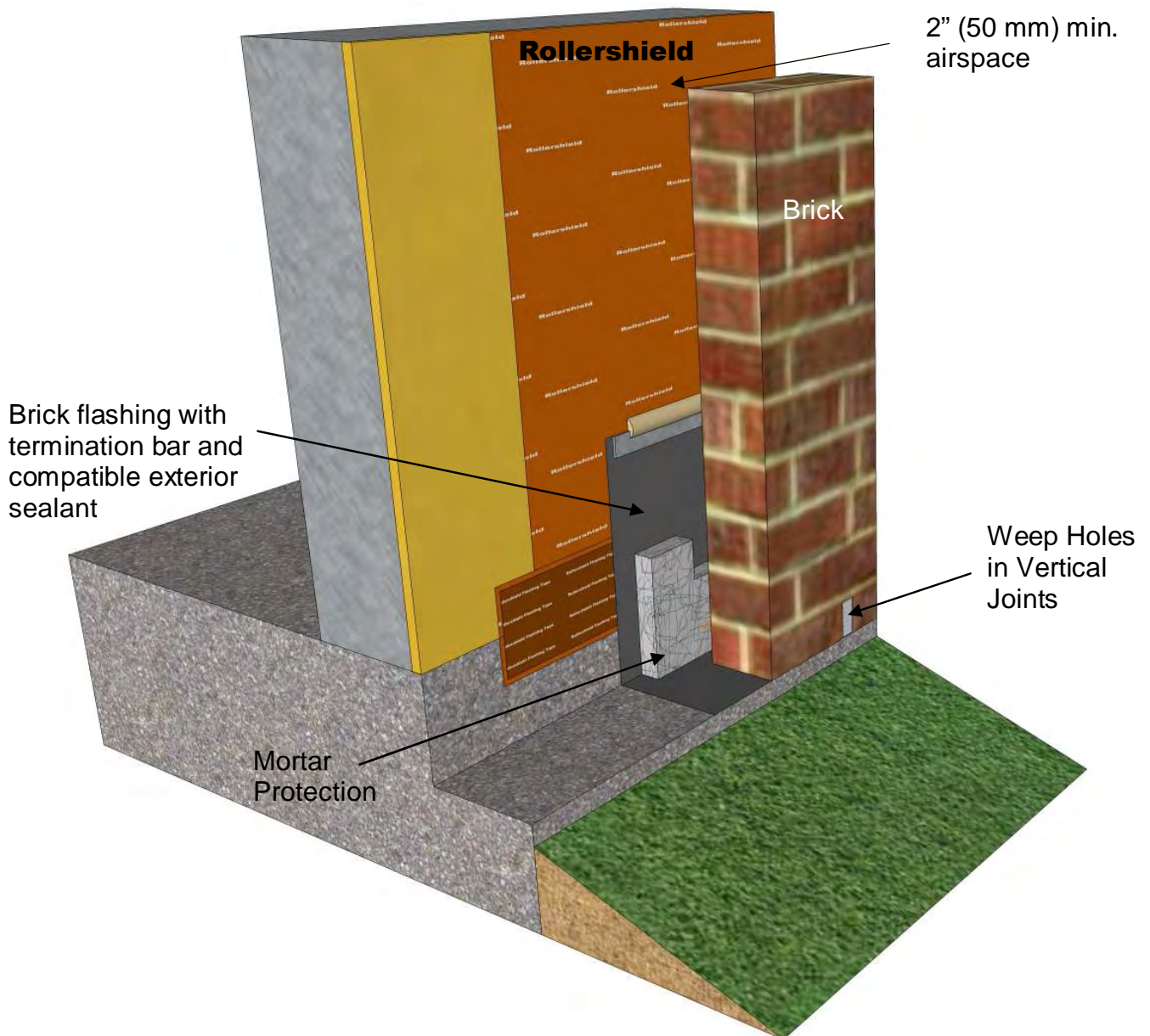
RSLAB-05 Stone Termination at Foundation

These drawings relay the conceptual conditions of Master Wall® Systems and are not the construction drawings. Ultimately the design and detailing of an entire wall system is the responsibility of a professional. These details will guide the design professional in the use of Master Wall® Products. Master Wall disclaims design, warranty or construction intent or responsibility. **Bold or brand name = Master Wall® Product.** ©2014 Master Wall Inc.



Rollershield LAB

Liquid Applied Air/Water Barrier



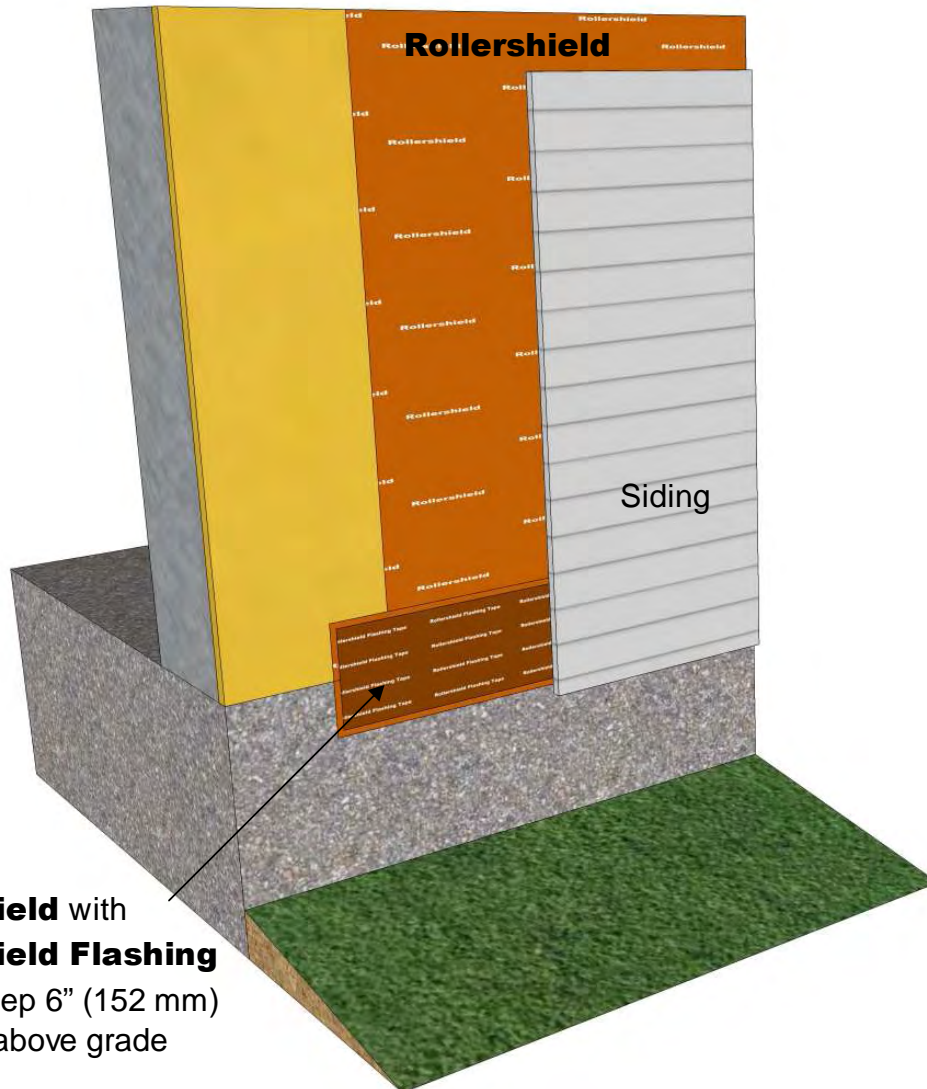
RSLAB-06 Brick Termination at Foundation

These drawings relay the conceptual conditions of Master Wall® Systems and are not the construction drawings. Ultimately the design and detailing of an entire wall system is the responsibility of a professional. These details will guide the design professional in the use of Master Wall® Products. Master Wall disclaims design, warranty or construction intent or responsibility. **Bold or brand name = Master Wall® Product.** ©2014 Master Wall Inc.



Rollershield LAB

Liquid Applied Air/Water Barrier



Rollershield with
Rollershield Flashing
Tape– keep 6" (152 mm)
minimum above grade

RSLAB-07 Siding Termination at Foundation

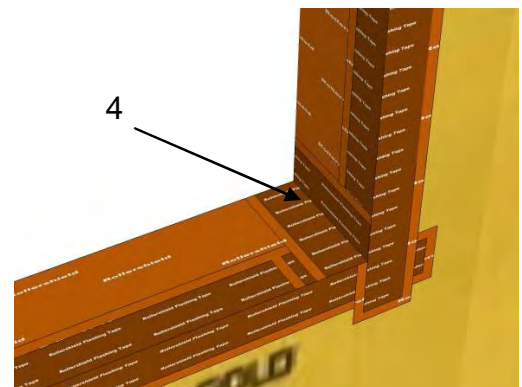
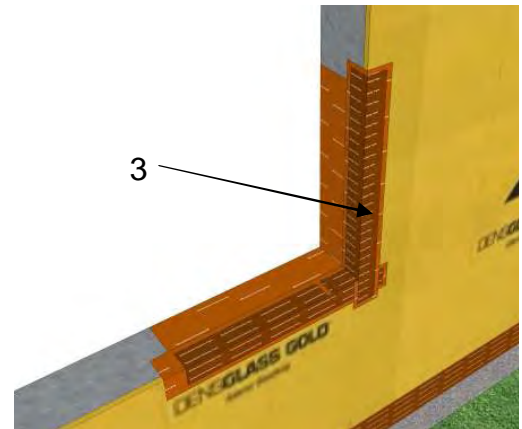
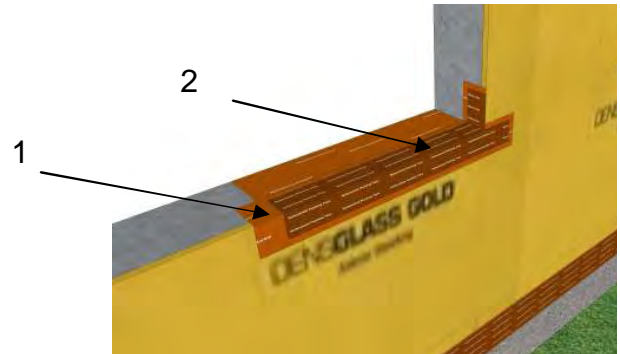
These drawings relay the conceptual conditions of Master Wall® Systems and are not the construction drawings. Ultimately the design and detailing of an entire wall system is the responsibility of a professional. These details will guide the design professional in the use of Master Wall® Products. Master Wall disclaims design, warranty or construction intent or responsibility. **Bold or brand name = Master Wall® Product.** ©2014 Master Wall Inc.



Rollershield LAB

Liquid Applied Air/Water Barrier

1. Start at the base of the window.
Apply wet **Rollershield** using a trowel, brush or roller to the sill and face of the wall.
2. Center and embed **Rollershield Flashing Tape** into the wet Rollershield and extend up the wall 3" (75 mm) up the jambs and onto the face of the wall. Smooth using trowel, brush or roller.
3. Apply jamb flashing in a similar manner extending the flashing 3" min. onto the sill surface.
4. Seal corner with an additional strip of **Rollershield Flashing Tape** centered in the corner
5. Apply head flashing in a similar manner.



RSLAB-08 Basic Flashing – Method A

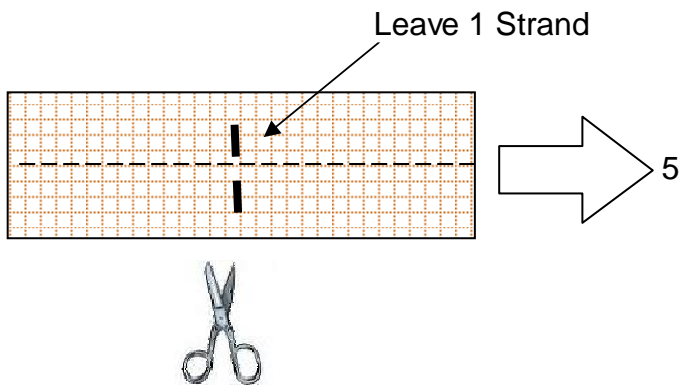
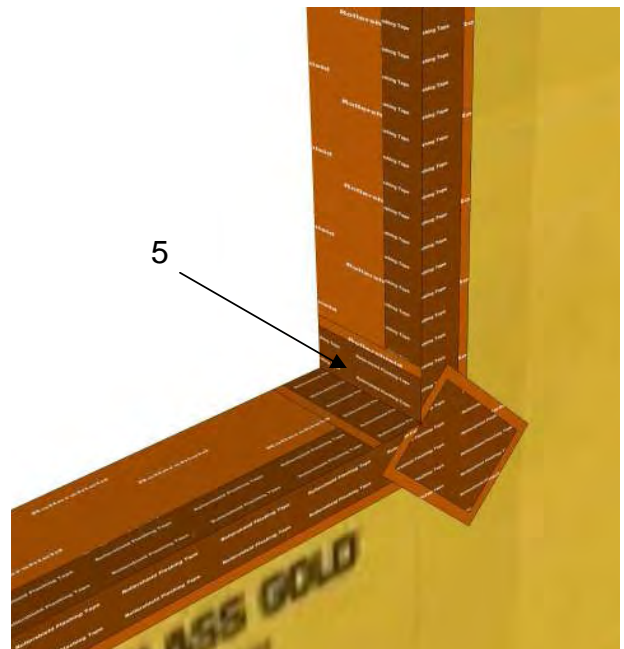
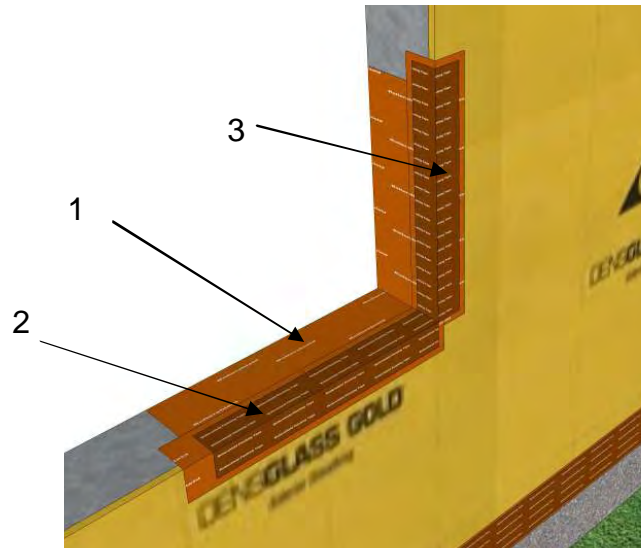
These drawings relay the conceptual conditions of Master Wall® Systems and are not the construction drawings. Ultimately the design and detailing of an entire wall system is the responsibility of a professional. These details will guide the design professional in the use of Master Wall® Products. Master Wall disclaims design, warranty or construction intent or responsibility. **Bold or brand name = Master Wall® Product.** ©2014 Master Wall Inc.



Rollershield LAB

Liquid Applied Air/Water Barrier

1. Start at the base of the window. Apply wet **Rollershield** using a trowel, brush or roller to the sill and face of the wall.
2. Center and embed **Rollershield Flashing Tape** into the wet **Rollershield**. Smooth using trowel, brush or roller.
3. Apply jamb flashing in a similar manner.
4. Apply head flashing in a similar manner.
5. Apply wet **Rollershield** at all corners and embed diagonal reinforcement.



RSLAB-09 Basic Flashing – Method B

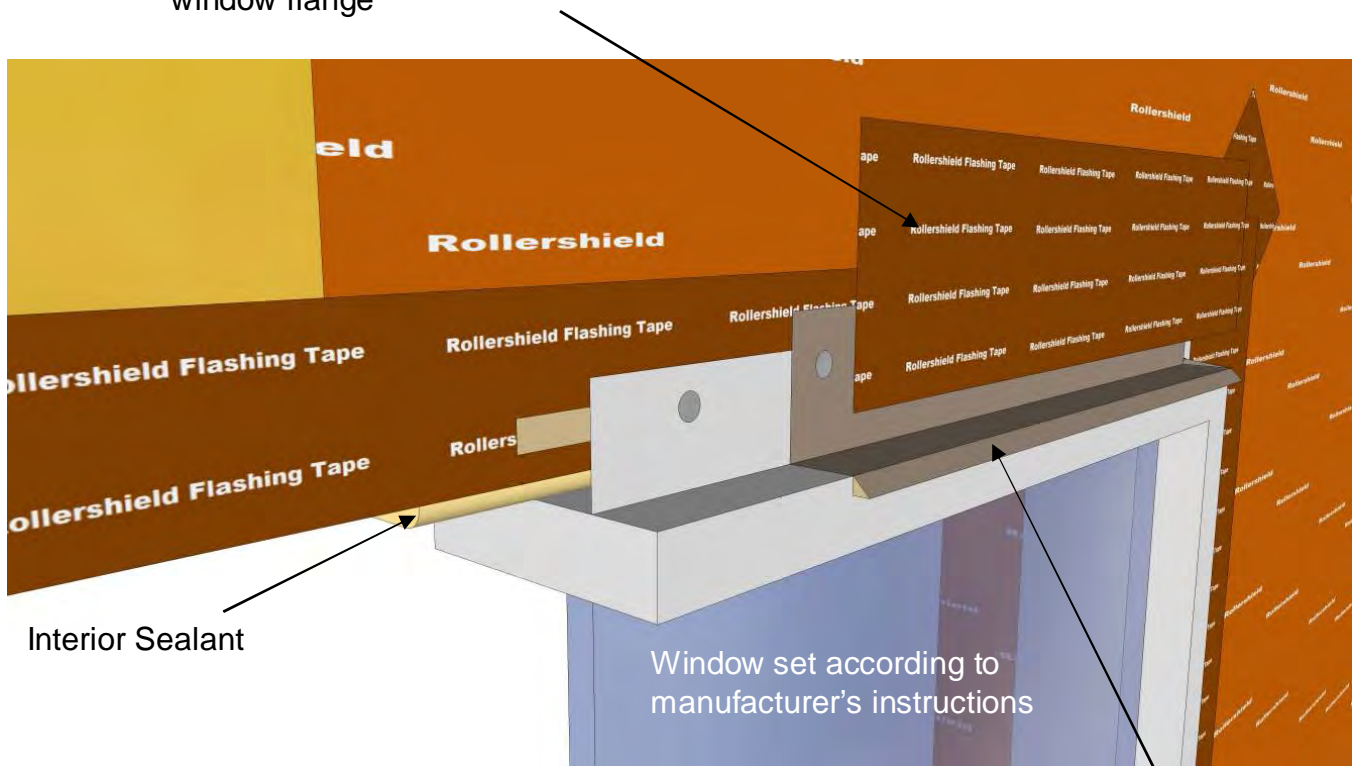
These drawings relay the conceptual conditions of Master Wall® Systems and are not the construction drawings. Ultimately the design and detailing of an entire wall system is the responsibility of a professional. These details will guide the design professional in the use of Master Wall® Products. Master Wall disclaims design, warranty or construction intent or responsibility. **Bold or brand name = Master Wall® Product.** ©2014 Master Wall Inc.



Rollershield LAB

Liquid Applied Air/Water Barrier

Rollershield with Rollershield Flashing Tape flashed onto window head flashing (shown) or onto self-flashing window flange



Head Flashing with end dams shown set in sealant

RSLAB-10 Window Head Detail

These drawings relay the conceptual conditions of Master Wall® Systems and are not the construction drawings. Ultimately the design and detailing of an entire wall system is the responsibility of a professional. These details will guide the design professional in the use of Master Wall® Products. Master Wall disclaims design, warranty or construction intent or responsibility. **Bold or brand name = Master Wall® Product.** ©2014 Master Wall Inc.

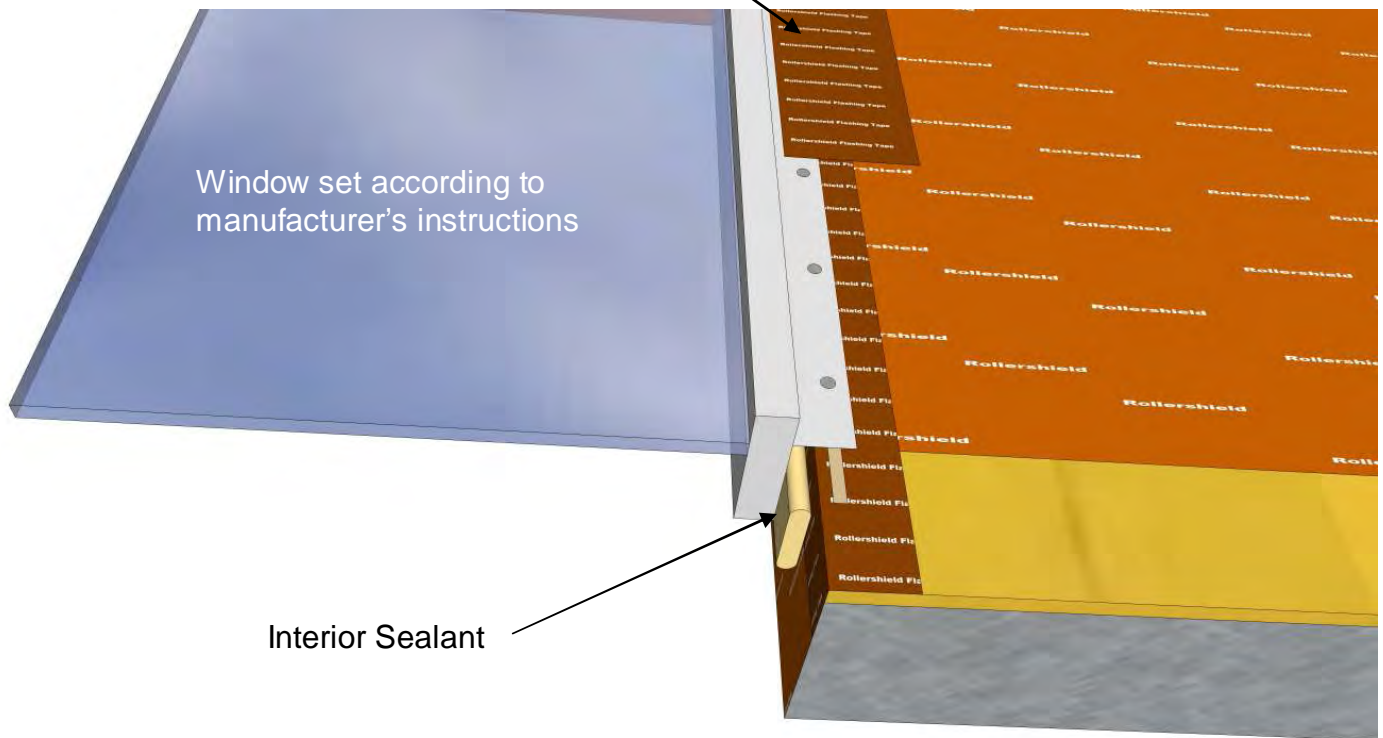


Rollershield LAB

Liquid Applied Air/Water Barrier

Rollershield with Rollershield

Flashing Tape flashed onto self-flashing window flange



Interior Sealant

RSLAB-11 Typical Window Jamb Detail

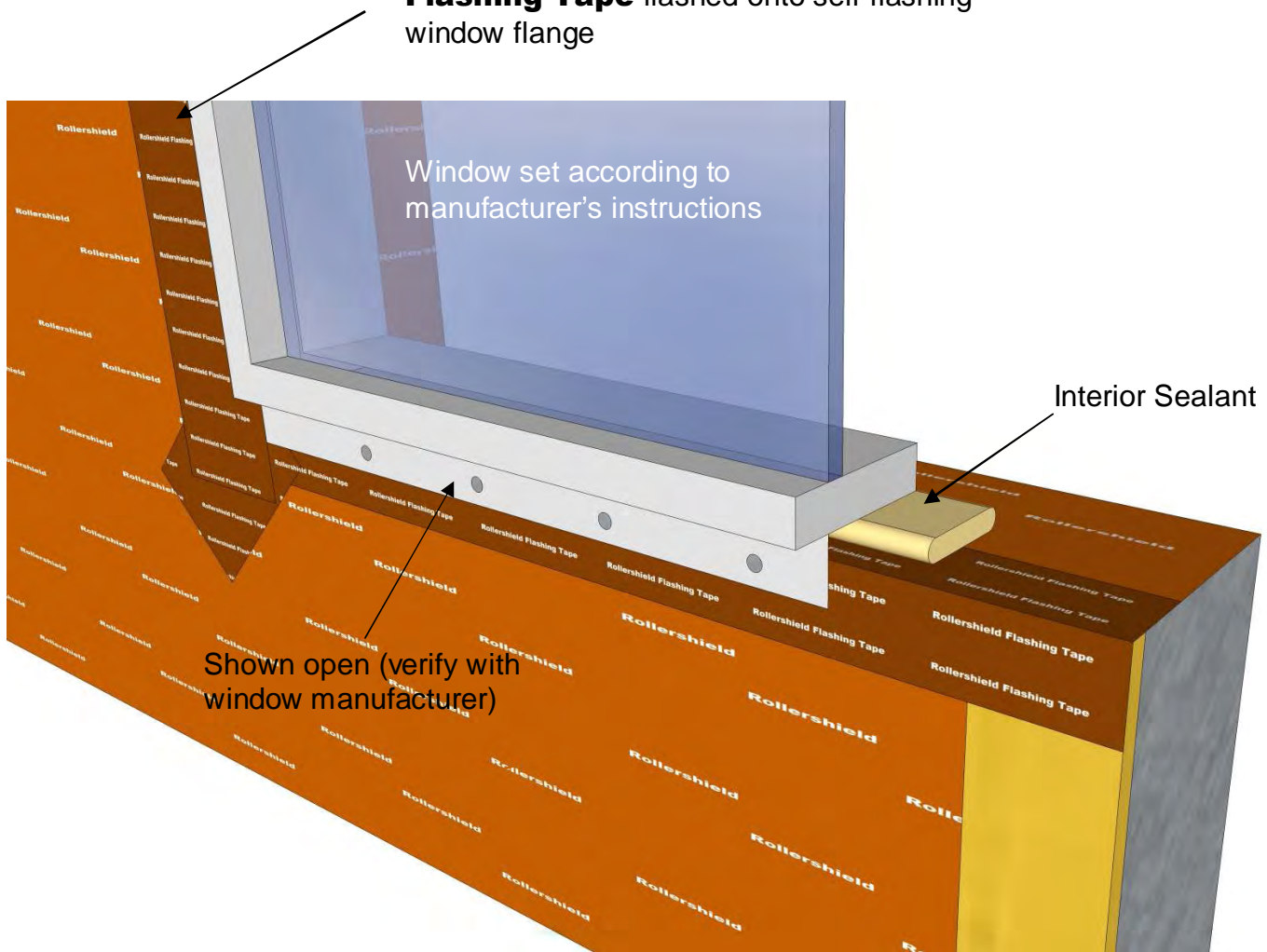
These drawings relay the conceptual conditions of Master Wall® Systems and are not the construction drawings. Ultimately the design and detailing of an entire wall system is the responsibility of a professional. These details will guide the design professional in the use of Master Wall® Products. Master Wall disclaims design, warranty or construction intent or responsibility. **Bold or brand name = Master Wall® Product.** ©2014 Master Wall Inc.



Rollershield LAB

Liquid Applied Air/Water Barrier

Rollershield with Rollershield Flashing Tape flashed onto self-flashing window flange



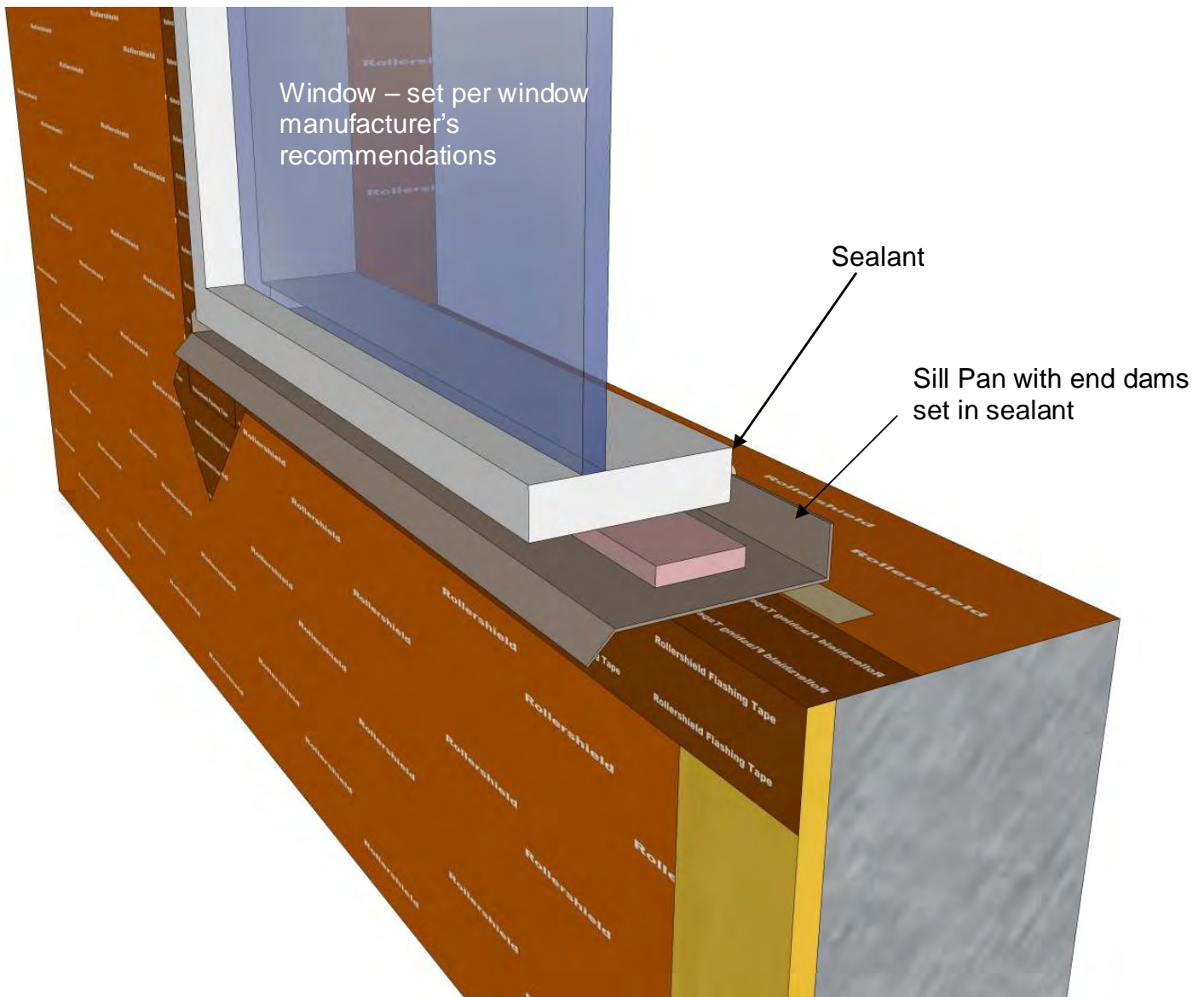
RSLAB-12 Typical Window Sill Detail

These drawings relay the conceptual conditions of Master Wall® Systems and are not the construction drawings. Ultimately the design and detailing of an entire wall system is the responsibility of a professional. These details will guide the design professional in the use of Master Wall® Products. Master Wall disclaims design, warranty or construction intent or responsibility. **Bold or brand name = Master Wall® Product.** ©2014 Master Wall Inc.



Rollershield LAB

Liquid Applied Air/Water Barrier



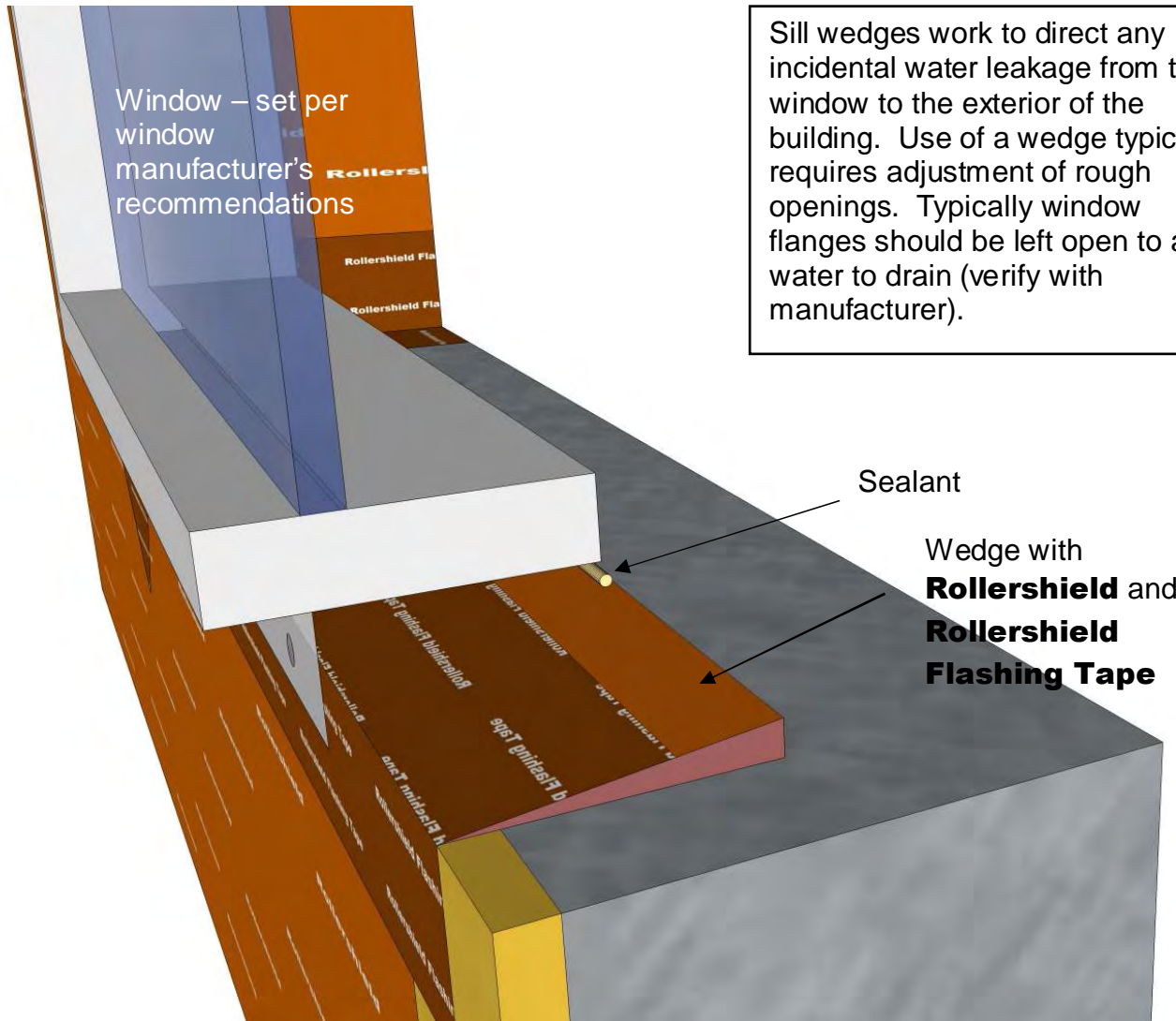
RSLAB-13 Typical Window Sill Detail (Pan)

These drawings relay the conceptual conditions of Master Wall® Systems and are not the construction drawings. Ultimately the design and detailing of an entire wall system is the responsibility of a professional. These details will guide the design professional in the use of Master Wall® Products. Master Wall disclaims design, warranty or construction intent or responsibility. **Bold or brand name = Master Wall® Product.** ©2014 Master Wall Inc.



Rollershield LAB

Liquid Applied Air/Water Barrier



Sill wedges work to direct any incidental water leakage from the window to the exterior of the building. Use of a wedge typically requires adjustment of rough openings. Typically window flanges should be left open to allow water to drain (verify with manufacturer).

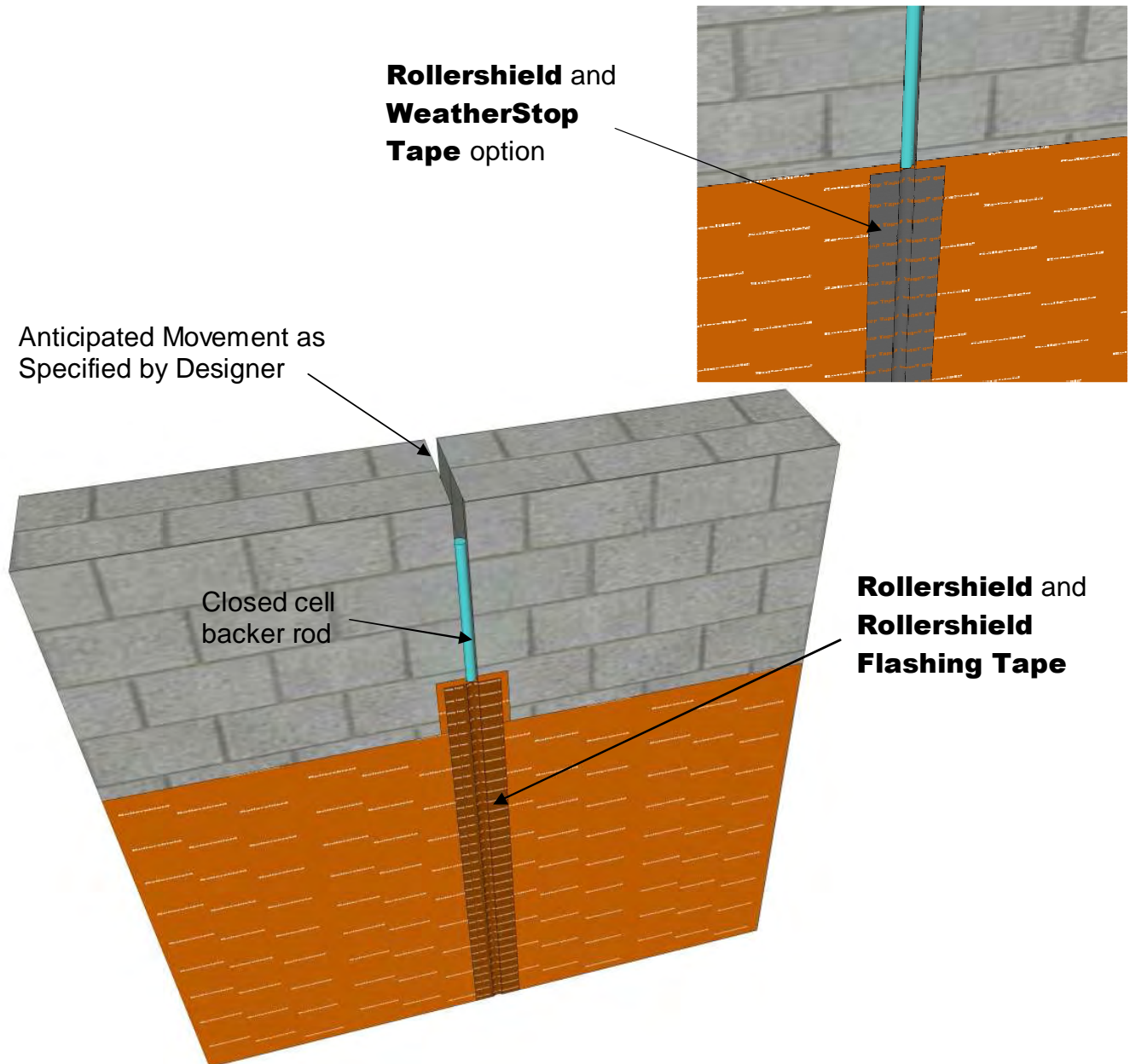
RSLAB-14 Typical Window Sill Detail (Wedge)

These drawings relay the conceptual conditions of Master Wall® Systems and are not the construction drawings. Ultimately the design and detailing of an entire wall system is the responsibility of a professional. These details will guide the design professional in the use of Master Wall® Products. Master Wall disclaims design, warranty or construction intent or responsibility. **Bold or brand name = Master Wall® Product.** ©2014 Master Wall Inc.



Rollershield LAB

Liquid Applied Air/Water Barrier



RSLAB-16 Typical Building Expansion Joint

These drawings relay the conceptual conditions of Master Wall® Systems and are not the construction drawings. Ultimately the design and detailing of an entire wall system is the responsibility of a professional. These details will guide the design professional in the use of Master Wall® Products. Master Wall disclaims design, warranty or construction intent or responsibility. **Bold or brand name = Master Wall® Product.** ©2014 Master Wall Inc.



Rollershield LAB

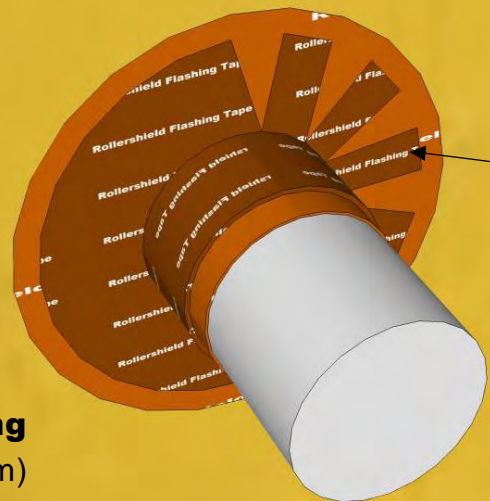
Liquid Applied Air/Water Barrier

Secure Pipe in opening

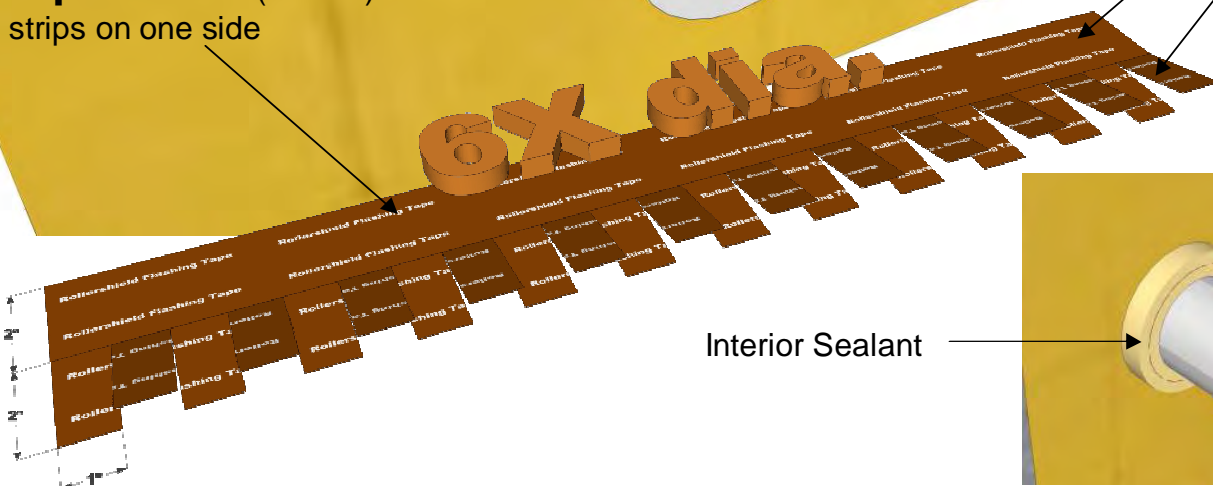


Rollershield with Rollershield Flashing Tape flashed onto pipe and wall. Wrap continuously and fill any pinholes with **Rollershield**.

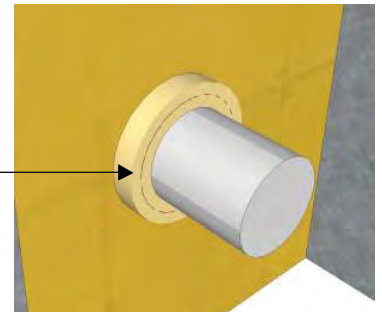
Rollershield Flashing Tape cut into 1" (25 mm) strips on one side



Pipe Side
Wall Side



Interior Sealant



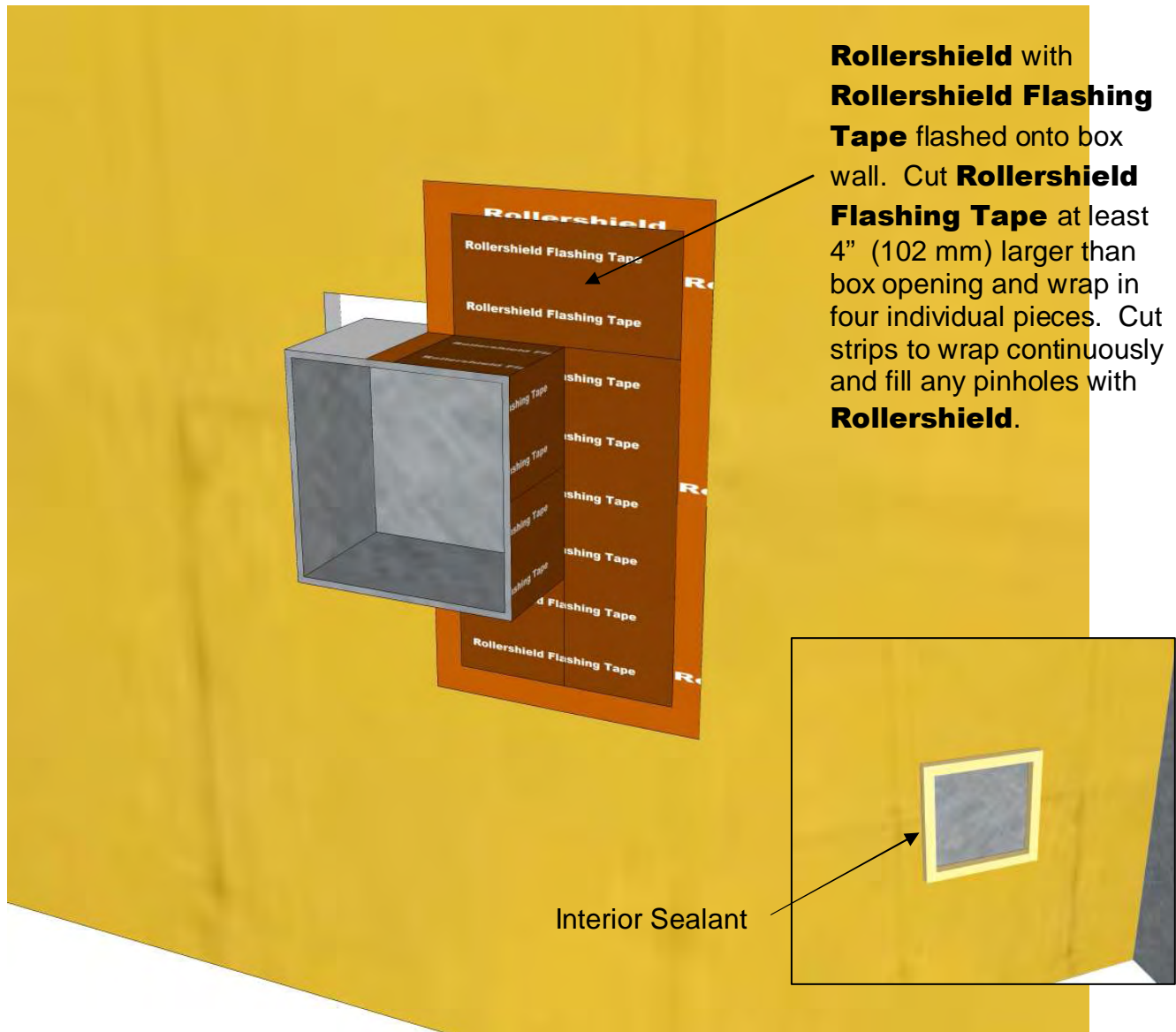
RSLAB-17 Typical Pipe Detail

These drawings relay the conceptual conditions of Master Wall® Systems and are not the construction drawings. Ultimately the design and detailing of an entire wall system is the responsibility of a professional. These details will guide the design professional in the use of Master Wall® Products. Master Wall disclaims design, warranty or construction intent or responsibility. **Bold or brand name = Master Wall® Product.** ©2014 Master Wall Inc.



Rollershield LAB

Liquid Applied Air/Water Barrier



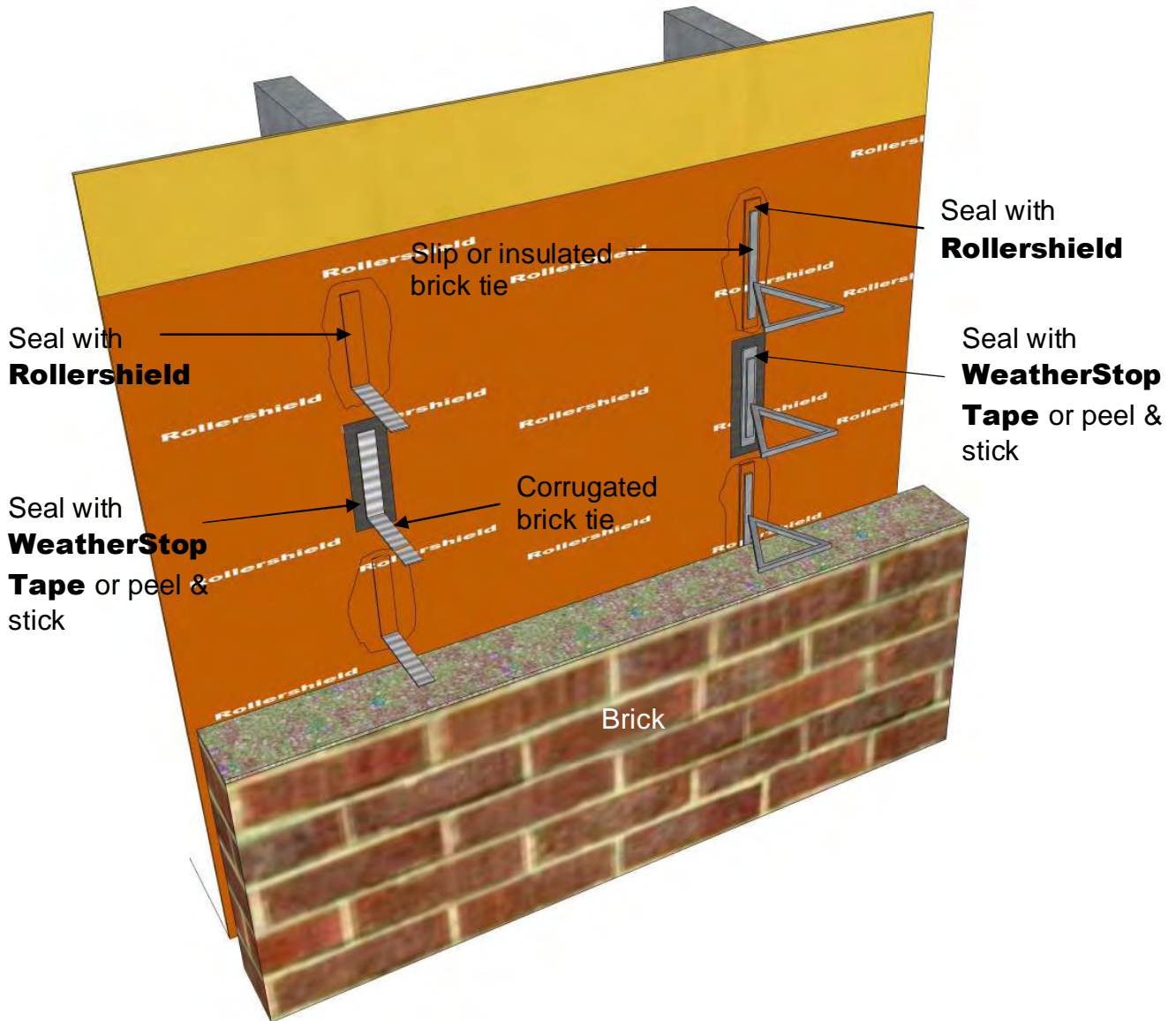
RSLAB-18 Box Detail

These drawings relay the conceptual conditions of Master Wall® Systems and are not the construction drawings. Ultimately the design and detailing of an entire wall system is the responsibility of a professional. These details will guide the design professional in the use of Master Wall® Products. Master Wall disclaims design, warranty or construction intent or responsibility. **Bold or brand name = Master Wall® Product.** ©2014 Master Wall Inc.



Rollershield LAB

Liquid Applied Air/Water Barrier



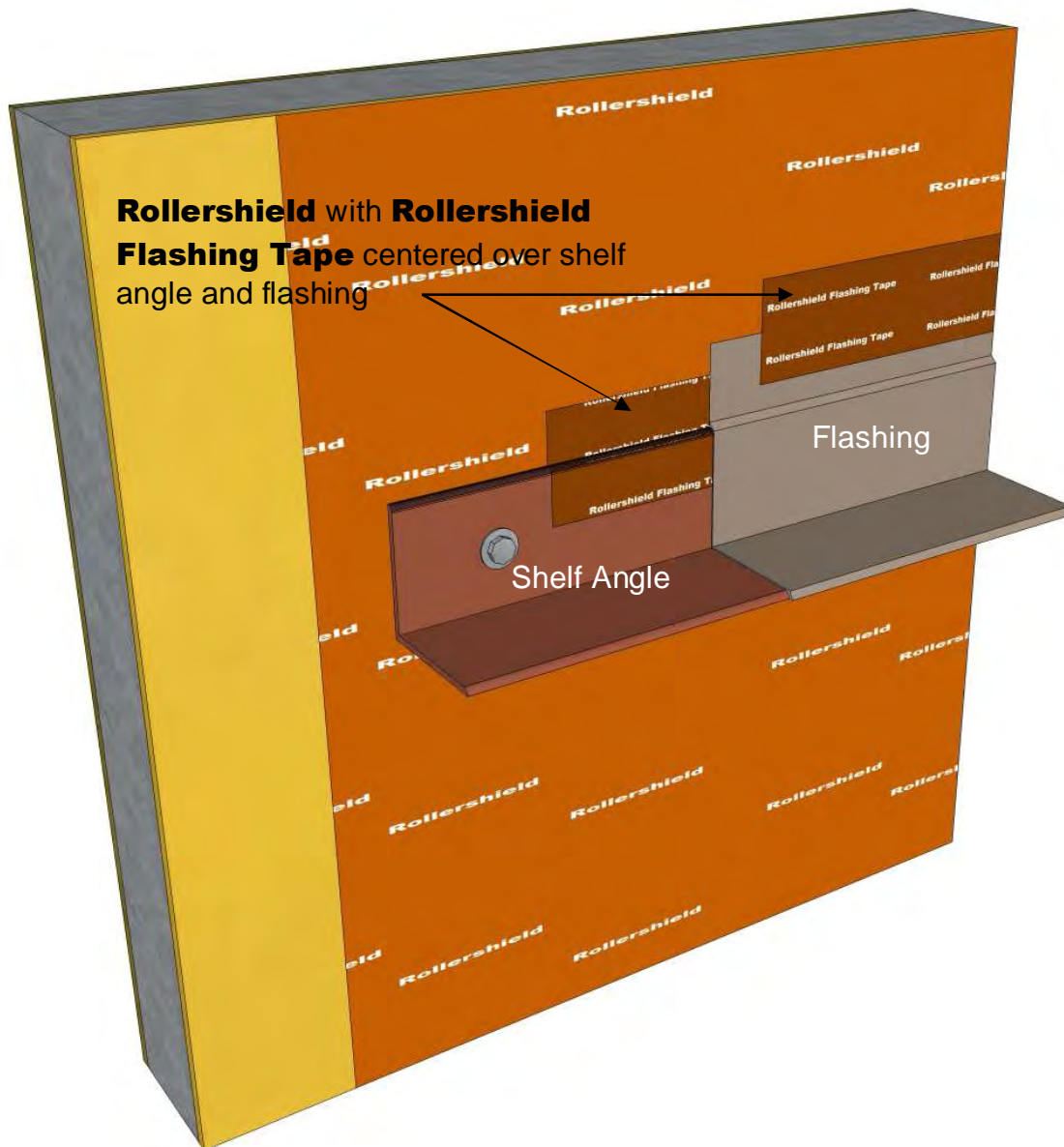
RSLAB-19 Brick Tie Detail

These drawings relay the conceptual conditions of Master Wall® Systems and are not the construction drawings. Ultimately the design and detailing of an entire wall system is the responsibility of a professional. These details will guide the design professional in the use of Master Wall® Products. Master Wall disclaims design, warranty or construction intent or responsibility. **Bold or brand name = Master Wall® Product.** ©2014 Master Wall Inc.



Rollershield LAB

Liquid Applied Air/Water Barrier



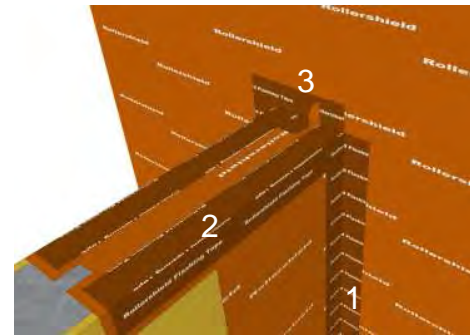
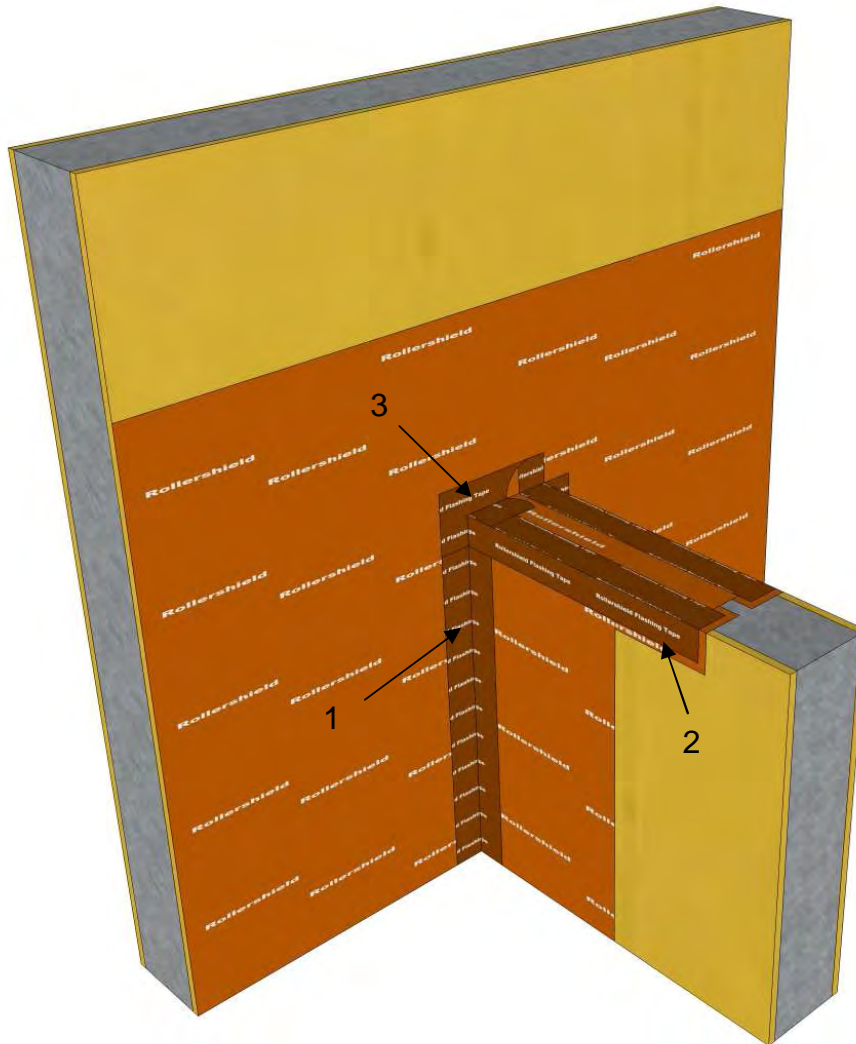
RSLAB-20 Structural Angle Detail

These drawings relay the conceptual conditions of Master Wall® Systems and are not the construction drawings. Ultimately the design and detailing of an entire wall system is the responsibility of a professional. These details will guide the design professional in the use of Master Wall® Products. Master Wall disclaims design, warranty or construction intent or responsibility. **Bold or brand name = Master Wall® Product.** ©2014 Master Wall Inc.



Rollershield LAB

Liquid Applied Air/Water Barrier



1. Start at the vertical wall section. Apply wet **Rollershield** using a trowel, brush or roller to the sill and face of the wall and center and embed **Rollershield Flashing Tape** cut 2" (50 mm) longer than the height of the wall into the wet **Rollershield**. Smooth using trowel, brush or roller.

2. Apply horizontal flashing in a similar manner extending the same 2" (50 mm) onto the vertical wall.

3. Center a cross-piece of **Rollershield Flashing Tape** at the horizontal/vertical transition.

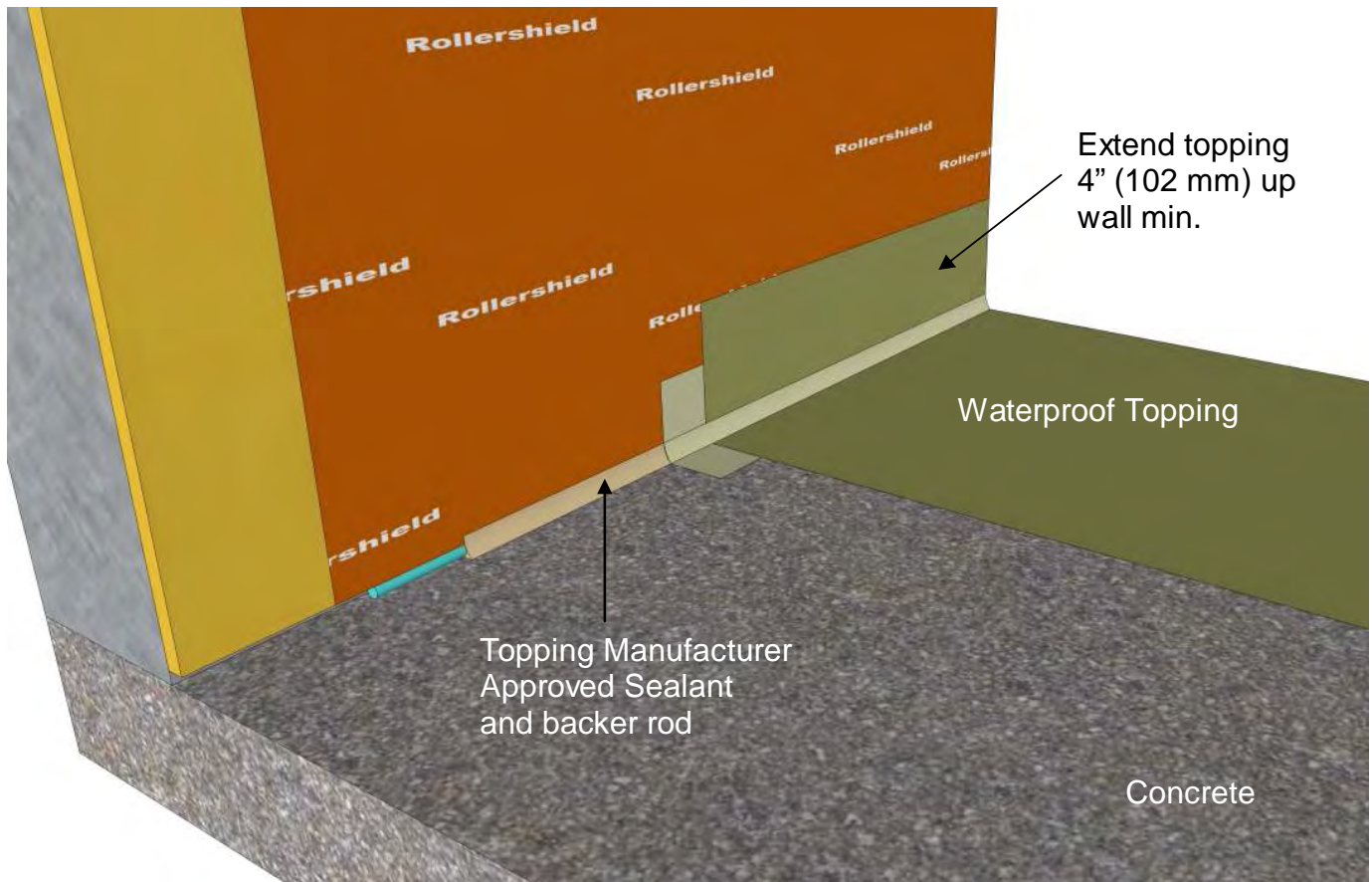
RSLAB-21 Saddle Wall Detail

These drawings relay the conceptual conditions of Master Wall® Systems and are not the construction drawings. Ultimately the design and detailing of an entire wall system is the responsibility of a professional. These details will guide the design professional in the use of Master Wall® Products. Master Wall disclaims design, warranty or construction intent or responsibility. **Bold or brand name = Master Wall® Product.** ©2014 Master Wall Inc.



Rollershield LAB

Liquid Applied Air/Water Barrier



Note: Topping must be compatible with acrylic water barriers

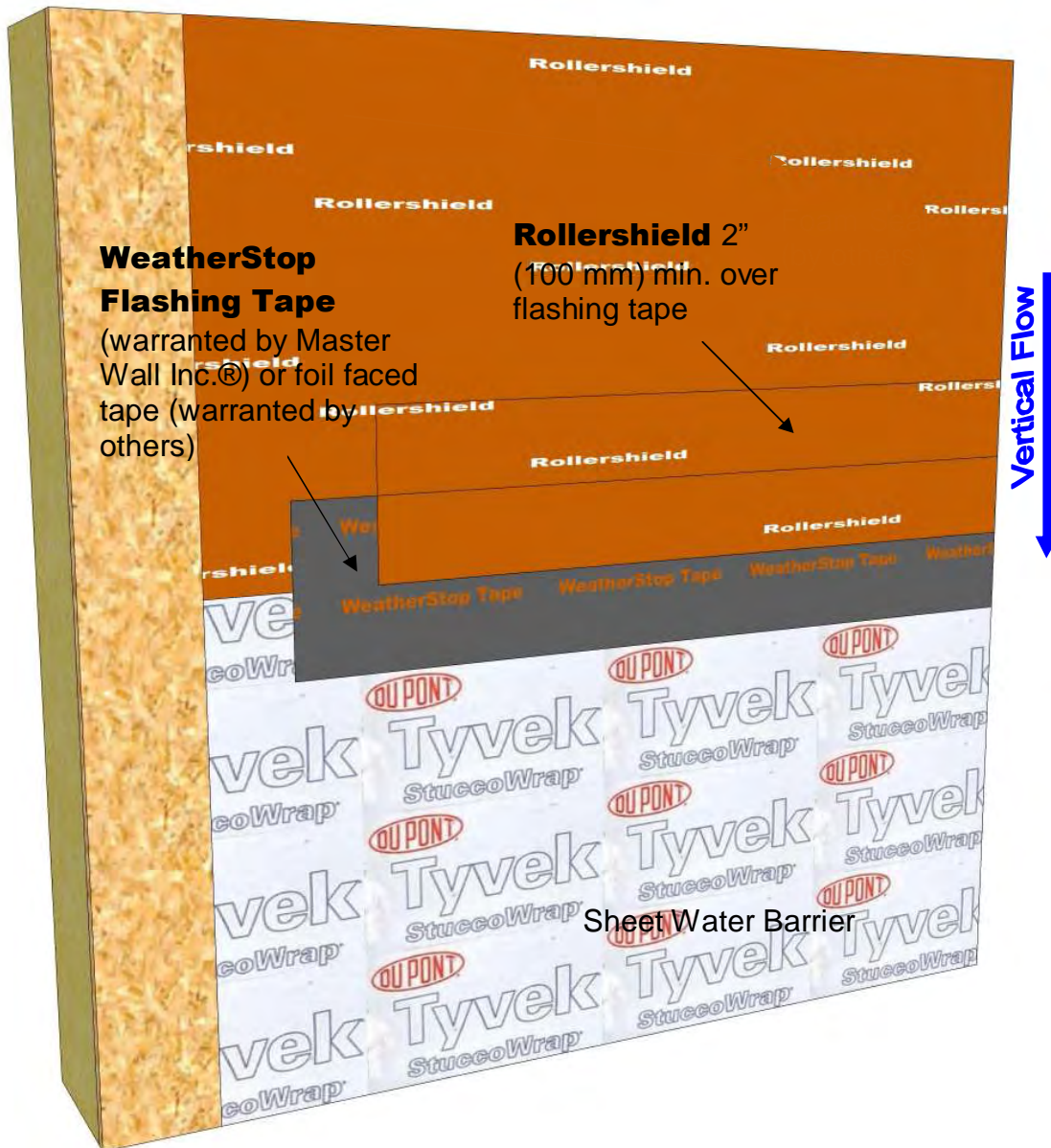
RSLAB-22 Deck Termination Detail

These drawings relay the conceptual conditions of Master Wall® Systems and are not the construction drawings. Ultimately the design and detailing of an entire wall system is the responsibility of a professional. These details will guide the design professional in the use of Master Wall® Products. Master Wall disclaims design, warranty or construction intent or responsibility. **Bold or brand name = Master Wall® Product.** ©2014 Master Wall Inc.



Rollershield LAB

Liquid Applied Air/Water Barrier



RSLAB-23 Transition to Sheet Water Barrier

These drawings relay the conceptual conditions of Master Wall® Systems and are not the construction drawings. Ultimately the design and detailing of an entire wall system is the responsibility of a professional. These details will guide the design professional in the use of Master Wall® Products. Master Wall disclaims design, warranty or construction intent or responsibility. **Bold or brand name = Master Wall® Product.** ©2014 Master Wall Inc.

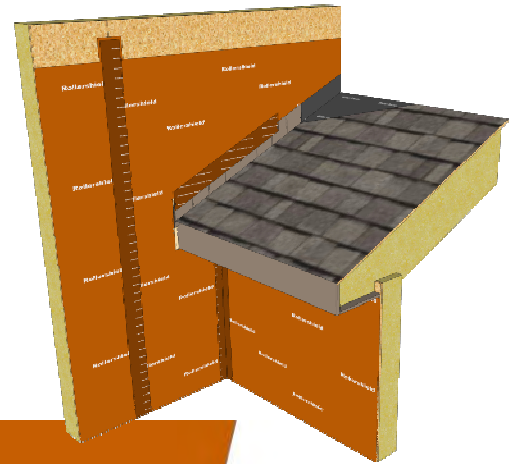


Rollershield LAB

Liquid Applied Air/Water Barrier

Notes:

1. Angle kick-out flashing 100° minimum to allow for drainage
2. Kick out flashing seams must be soldered or sealed with appropriate sealant.
3. **Rollershield** should cover the step flashing a minimum of 2" (51 mm) and siding should be placed about 1" to 2" (25-51 mm) above the roofline in accordance with local requirements.



RSLAB-24 Typical Roof/Wall Intersection

These drawings relay the conceptual conditions of Master Wall® Systems and are not the construction drawings. Ultimately the design and detailing of an entire wall system is the responsibility of a professional. These details will guide the design professional in the use of Master Wall® Products. Master Wall disclaims design, warranty or construction intent or responsibility. **Bold or brand name = Master Wall® Product.** ©2014 Master Wall Inc.



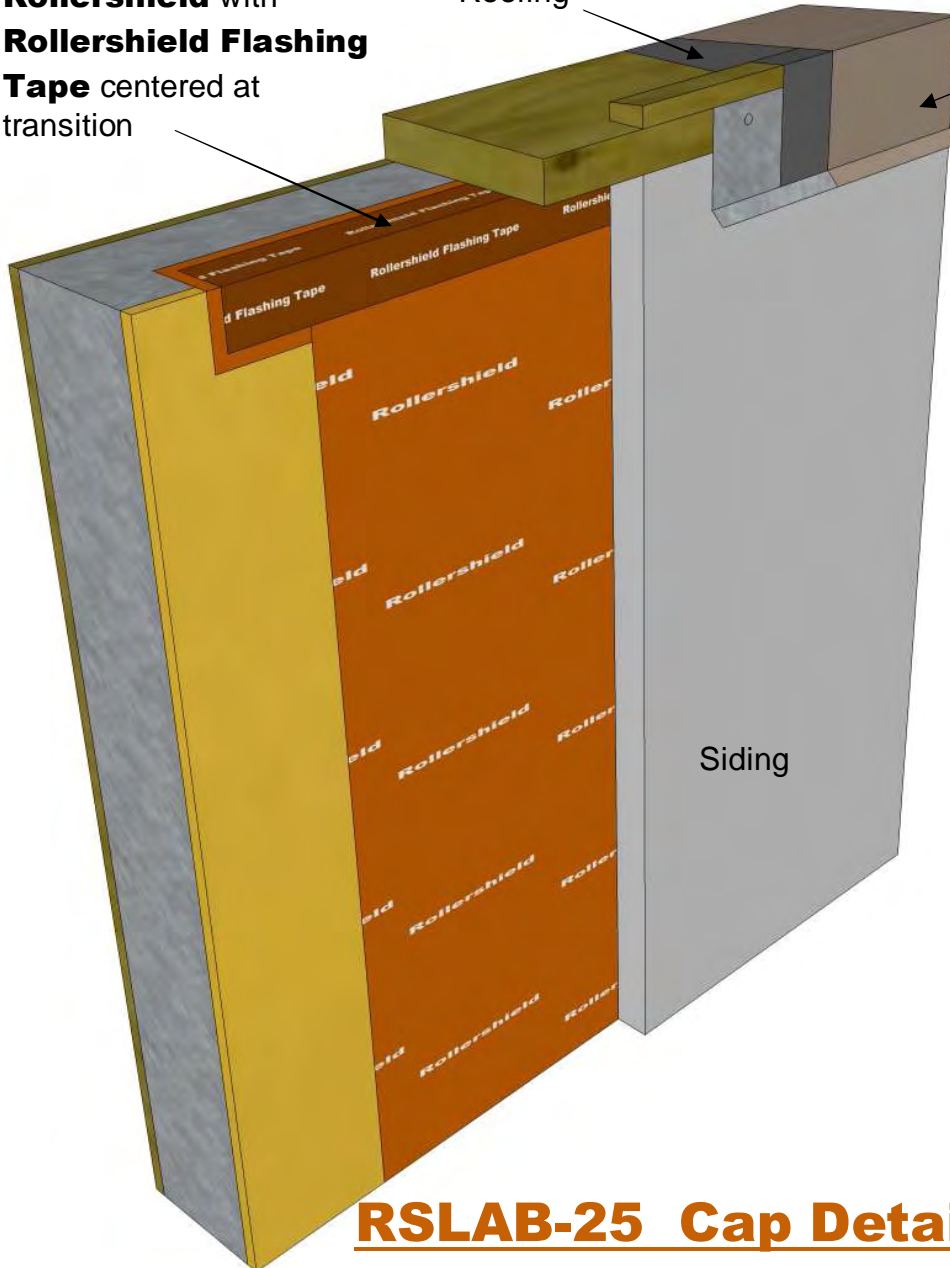
Rollershield LAB

Liquid Applied Air/Water Barrier

**Rollershield with
Rollershield Flashing
Tape** centered at
transition

Roofing

Coping Cap with
continuous cleat –
extend 2" min over
EIFS and stucco and
seal lower edge.
Follow
manufacturer's
recommendations
for other siding
materials



RSLAB-25 Cap Detail

These drawings relay the conceptual conditions of Master Wall® Systems and are not the construction drawings. Ultimately the design and detailing of an entire wall system is the responsibility of a professional. These details will guide the design professional in the use of Master Wall® Products. Master Wall disclaims design, warranty or construction intent or responsibility. **Bold or brand name = Master Wall® Product.** ©2014 Master Wall Inc.