

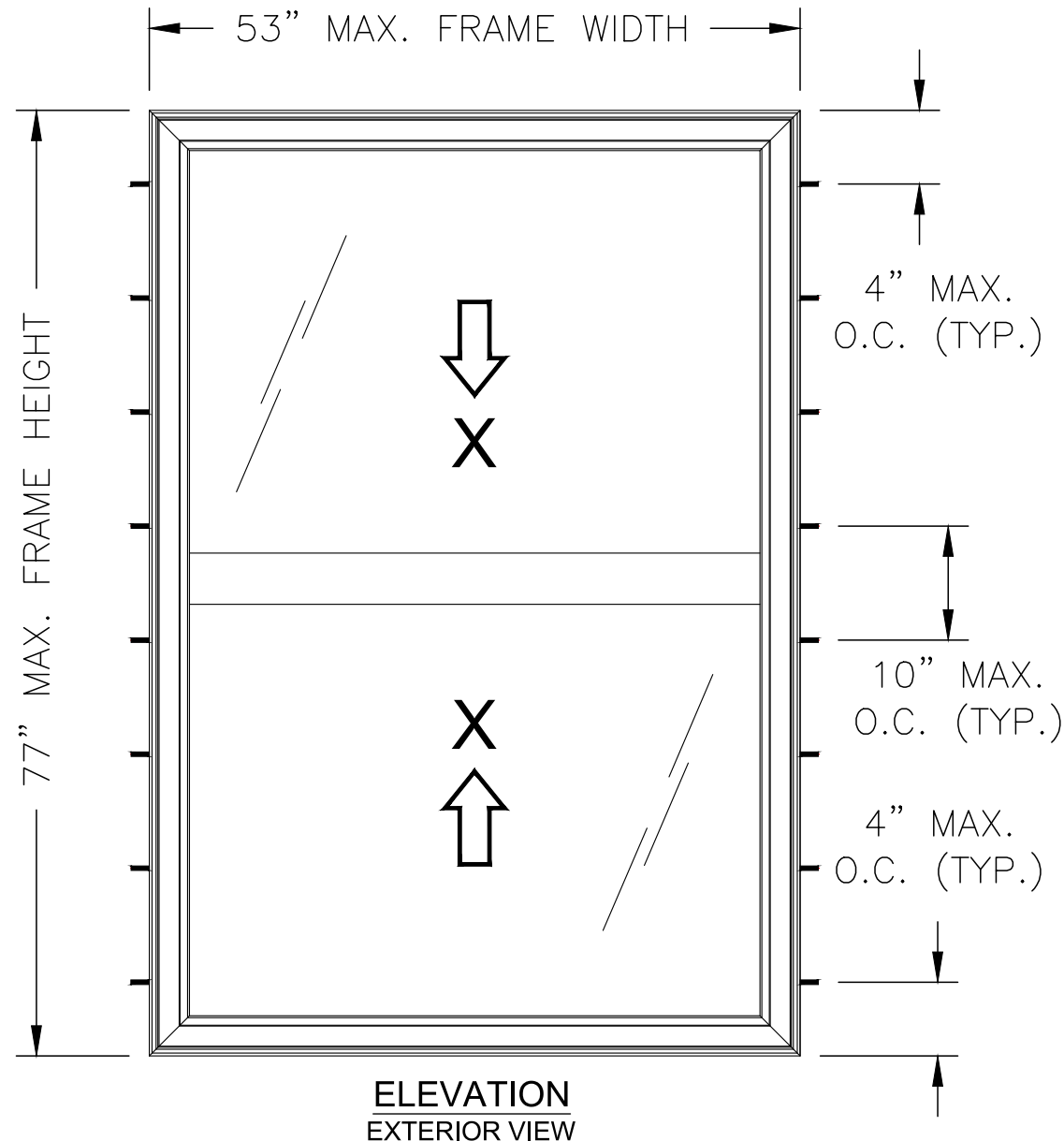
REGENCY PLUS, INC.

SERIES 7313 VINYL TILT DOUBLE HUNG WINDOW

INSTALLATION ANCHORAGE DETAILS

NOTES:

1. THE PRODUCT SHOWN HEREIN IS DESIGNED AND MANUFACTURED TO COMPLY WITH REQUIREMENTS OF THE CURRENT FLORIDA BUILDING CODE EXCLUDING THE HIGH VELOCITY HURRICANE ZONE (HVHZ).
2. WOOD FRAMING, 2X WOOD BUCK, METAL FRAMING AND CONCRETE/MASONRY OPENING TO BE DESIGNED AND ANCHORED TO PROPERLY TRANSFER ALL LOADS TO STRUCTURE. FRAMING AND CONCRETE/MASONRY OPENING IS THE RESPONSIBILITY OF THE ARCHITECT OR ENGINEER OF RECORD.
3. 1X BUCK OVER CONCRETE/MASONRY IS OPTIONAL. WHERE 1X BUCKS ARE USED, INSTALLATION ANCHORS WILL PASS THROUGH WINDOW FRAME AND 1X BUCK INTO CONCRETE/MASONRY SUBSTRATE. WHERE 1X BUCK IS NOT USED, INSTALLATION ANCHORS WILL PASS THROUGH WINDOW FRAME INTO CONCRETE/MASONRY SUBSTRATE. DISSIMILAR MATERIALS MUST BE SEPARATED WITH APPROVED COATING OR MEMBRANE. SELECTION OF COATING OR MEMBRANE IS THE RESPONSIBILITY OF THE ARCHITECT OR ENGINEER OF RECORD.
4. THE PRODUCT SHOWN HEREIN HAS BEEN TESTED TO AAMA/WDMA/CSA 101/I.S.2/A440-11. SEE TEST REPORT NO. NCTL-110-21570-1 DATED 9/25/18 BY NATIONAL CERTIFIED TESTING LABORATORIES, YORK, PA.
5. MATERIAL:
 - 5.1. FRAME: EXTRUDED RIGID PVC.
 - 5.2. REINFORCEMENT: GALVANIZED STEEL TUBE - ALL SASH MEMBERS.
6. GLAZING:
 - 6.1. GLAZING DETAIL AS TESTED: 22.1mm (0.870") NOMINAL O.A. IGU COMPRISED OF 2 LITES OF 3mm (0.119") TEMPERED GLASS AND 16.05mm (0.632") STAINLESS STEEL SPACER (TYPE SS-D). INTERIOR GLAZED AGAINST A (2)-LEAF DUAL DUROMETER BACK BEDDING AND SILICONE HEEL BEAD AND A SNAP-IN (2)-LEAF DUAL DUROMETER RIGID VINYL GLAZING BEAD.
 - 6.2. AS TESTED GLAZING MEETS ASTM E1300-09a FOR THE DESIGN CONDITIONS SHOWN IN THIS PRODUCT APPROVAL DOCUMENT.
 - 6.3. ALTERNATE GLAZING MEETING THE REQUIREMENTS OF AAMA/WDMA/CSA 101/I.S.2/A440 SHALL BE ALLOWED PER ASTM E1300.
7. APPROVED IMPACT PROTECTIVE SYSTEM IS REQUIRED FOR THIS PRODUCT IN WIND BORNE DEBRIS REGIONS.
8. SHIM AS REQUIRED AT EACH INSTALLATION ANCHOR WITH LOAD BEARING SHIM. SHIM WHERE SPACE OF 1/16" OR GREATER OCCURS. MAXIMUM ALLOWABLE SHIM STACK TO BE 1/4".
9. FOR ANCHORING INTO CONCRETE/MASONRY USE 3/16" FLAT HEAD TAPCONS WITH SUFFICIENT LENGTH TO ACHIEVE A 1 1/2" MINIMUM EMBEDMENT INTO CONCRETE WITH 1 1/8" MINIMUM EDGE DISTANCE AND 1" MINIMUM EMBEDMENT INTO MASONRY WITH 2" MINIMUM EDGE DISTANCE. LOCATE ANCHORS AS SHOWN IN ELEVATIONS AND INSTALLATION DETAILS. ANCHOR LOCATIONS HAVE +/- 1" TOLERANCE.
10. FOR ANCHORING INTO WOOD FRAMING OR 2X BUCK USE #10 FLAT HEAD WOOD SCREWS WITH SUFFICIENT LENGTH TO ACHIEVE A 1 3/8" MINIMUM EMBEDMENT INTO SUBSTRATE WITH 3/4" MINIMUM EDGE DISTANCE. LOCATE ANCHORS AS SHOWN IN ELEVATIONS AND INSTALLATION DETAILS. ANCHOR LOCATIONS HAVE +/- 1" TOLERANCE.
11. FOR ANCHORING INTO METAL STRUCTURE USE #10 FLAT HEAD SMS OR SELF DRILLING SCREWS WITH SUFFICIENT LENGTH TO ACHIEVE 3 THREADS MINIMUM BEYOND STRUCTURE INTERIOR WALL WITH 3/4" MINIMUM EDGE DISTANCE. LOCATE ANCHORS AS SHOWN IN ELEVATIONS AND INSTALLATION DETAILS. ANCHOR LOCATIONS HAVE +/- 1" TOLERANCE.
12. ALL FASTENERS TO BE CORROSION RESISTANT.
13. INSTALLATION ANCHORS SHALL BE INSTALLED IN ACCORDANCE WITH ANCHOR MANUFACTURER'S INSTALLATION INSTRUCTIONS AND ANCHORS SHALL NOT BE USED IN SUBSTRATES WITH STRENGTHS LESS THAN THE MINIMUM STRENGTH SPECIFIED BELOW:
 - 13.1. WOOD - MINIMUM SPECIFIC GRAVITY OF G=0.42
 - 13.2. CONCRETE - MINIMUM COMPRESSIVE STRENGTH OF 2500 PSI
 - 13.3. MASONRY - STRENGTH CONFORMANCE TO ASTM C-90, MEDIUM WEIGHT WITH DENSITY > 117 PCF
 - 13.4. METAL STRUCTURE: STEEL 18GA (0.0428"), 33KSI OR ALUMINUM 6063-T5 0.048" THICK MINIMUM



NOTES:

1. MAXIMUM TOP SASH SIZE: 49.125" X 36.938"; MAXIMUM BOTTOM SASH SIZE: 50.125" X 36.75"
2. MAXIMUM TOP SASH D.L.O.: 45.813" X 33.375"; MAXIMUM BOTTOM SASH D.L.O.: 46.75" X 33.188"
3. 0.938" X 0.25" WEEP HOLE AT 1" FROM EACH END OF EXTERIOR SILL FACE.
4. 1.28" X 0.3" WEEP HOLE AT 3.625" FROM EACH END OF EXTERIOR SILL FACE.
5. 0.75" X 0.5" WEEP HOLE AT EACH END OF INTERIOR SILL TRACK.

HARDWARE SCHEDULE AND REINFORCEMENT

A	LOCKS, TYPE METAL CAM-TYPE SWEEP. LOCATED 15.75" FROM EACH END OF THE INTERIOR MEETING RAIL
B	KEEPER, TYPE METAL. LOCATED EXTERIOR MEETING RAIL AT THE LOCK LOCATIONS.
C	BALANCE, TYPE (4) COIL SPRING. LOCATED EACH JAMB TRACK.
D	PIVOT BAR, TYPE (1) DIE-CAST T-SHAPED. LOCATED EACH END OF THE EXTERIOR MEETING RAIL AND BOTTOM RAIL FASTENED WITH (3) RIVETS.
E	REINFORCEMENT, TYPE GALVANIZED STEEL TUBE. THICKNESS 0.060". LOCATED ALL SASH MEMBERS.

TABLE OF CONTENT

SHEET	DESCRIPTION
1	ELEVATION, ANCHORING AND NOTES
2	INSTALLATION DETAILS

DESIGN PRESSURE RATING (PSF)

+50.0/-50.0

IMPACT RATING

NONE

PROJECT #418-1002

REGENCY PLUS, INC.
2000 LOCUST GAP HIGHWAY
MT. CARMEL, PA 17851

TITLE: SERIES 7313 VINYL TILT DOUBLE HUNG WINDOW
ELEVATION, ANCHORING AND NOTES

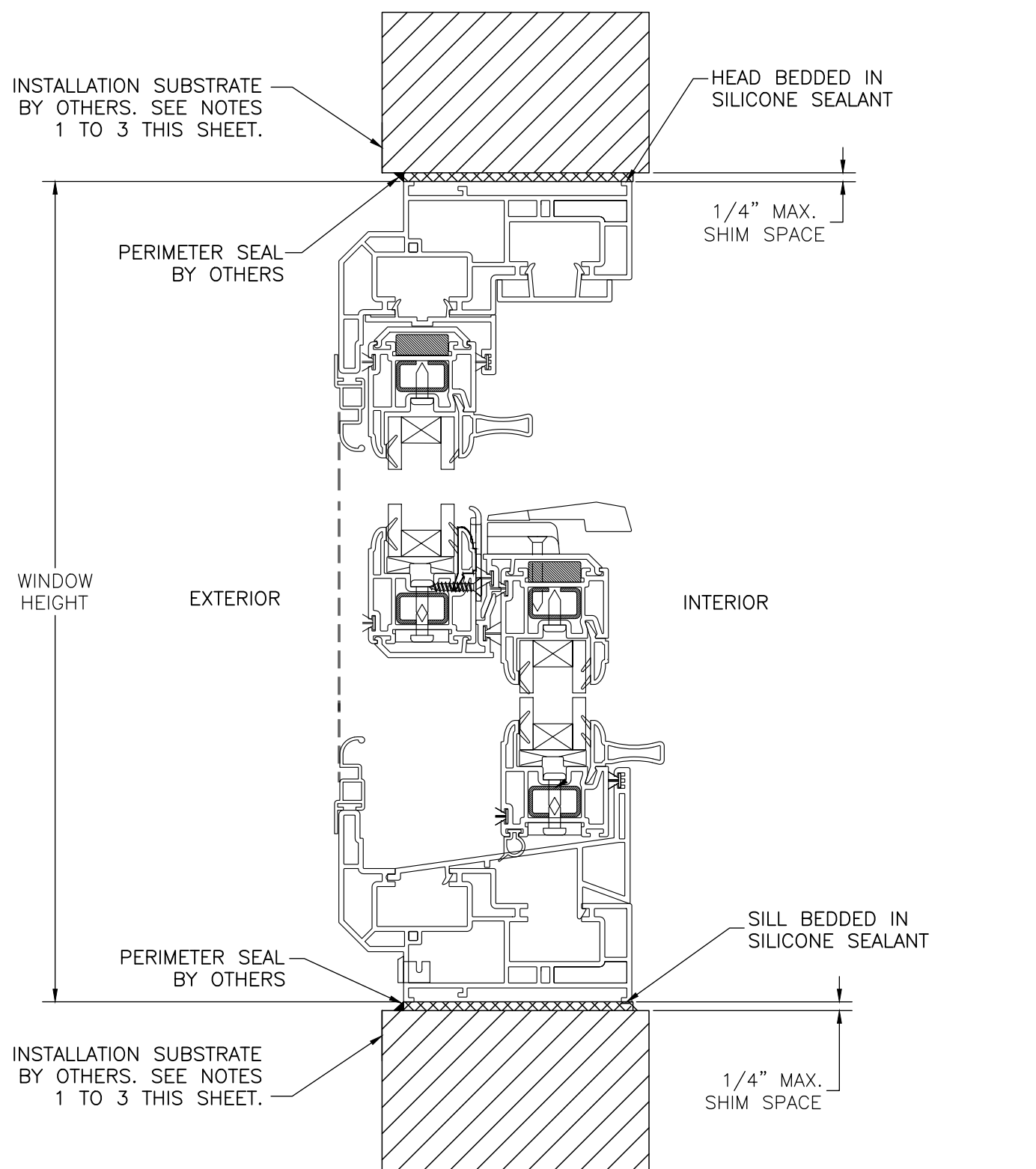
DRAWN BY: RJA
SCALE: N.T.S.
DATE: 1/11/18
DRAWING NO: RPLS0070
SHEET: 1 OF 2



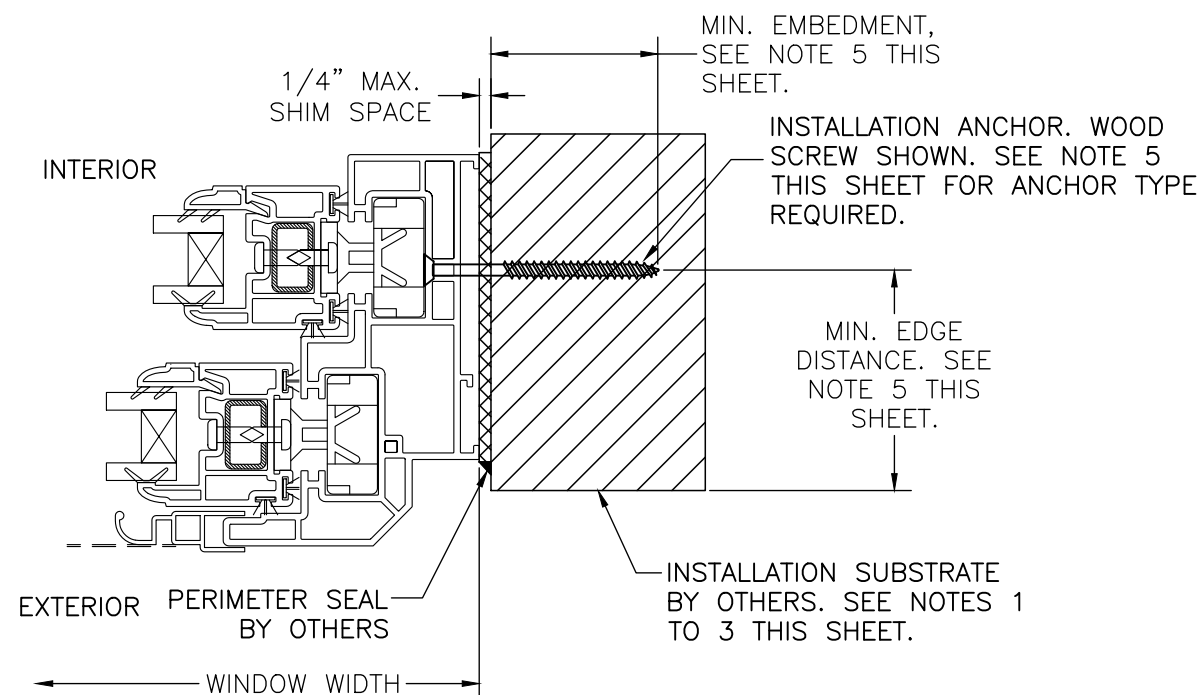
PREPARED BY:
Robert J. Amoruso, P.E.
Florida P.E. No. 49752

PTC Product Design Group, LLC
PO Box 520775
Longwood, FL 32752-0775
321-690-1788 info@ptc-corp.com
FBPE Certificate of Authorization
No. 25935

			RJA	BY
		A	REVISED ANCHORAGE	DATE
			10/25/18	DATE
			REV	BY
			DESCRIPTION	DATE



VERTICAL CROSS SECTION
 WOOD FRAMING, 2X WOOD BUCK,
 CONCRETE/MASONRY OR METAL FRAME
 APPROVED



HORIZONTAL (JAMB) CROSS SECTION
 WOOD FRAMING, 2X WOOD BUCK,
 CONCRETE/MASONRY OR METAL FRAME
 APPROVED

INSTALLATION NOTES:

1. APPROVED INSTALLATION SUBSTRATES INCLUDE THE FOLLOWING:
 - 1.1. WOOD FRAMING
 - 1.2. STEEL STUD FRAMING AND
 - 1.3. CONCRETE AND/OR MASONRY
2. SUBSTRATE OPENING TO BE DESIGNED AND ANCHORED TO PROPERLY TRANSFER ALL LOADS TO STRUCTURE. FRAMING AND CONCRETE/MASONRY OPENING IS THE RESPONSIBILITY OF THE ARCHITECT OR ENGINEER OF RECORD.
3. 1X BUCK OVER CONCRETE/MASONRY IS OPTIONAL. WHERE 1X BUCK IS NOT USED, DISSIMILAR MATERIALS MUST BE SEPARATED WITH APPROVED COATING OR MEMBRANE. SELECTION OF COATING OR MEMBRANE IS THE RESPONSIBILITY OF THE ARCHITECT OR ENGINEER OF RECORD.
4. SHIM AS REQUIRED AT EACH INSTALLATION ANCHOR WITH LOAD BEARING SHIM. SHIM WHERE SPACE OF 1/16" OR GREATER OCCURS. MAXIMUM ALLOWABLE SHIM STACK TO BE 1/4".
5. SUBSTRATE ANCHORING METHODS:
 - 5.1. FOR ANCHORING INTO CONCRETE/MASONRY USE 3/16" FLAT HEAD TAPCONS WITH SUFFICIENT LENGTH TO ACHIEVE A 1 1/2" MINIMUM EMBEDMENT INTO CONCRETE WITH 1 1/8" MINIMUM EDGE DISTANCE AND 1" MINIMUM EMBEDMENT INTO MASONRY WITH 2" MINIMUM EDGE DISTANCE. LOCATE ANCHORS AS SHOWN IN ELEVATIONS AND INSTALLATION DETAILS. ANCHOR LOCATIONS HAVE +/- 1" TOLERANCE.
 - 5.2. FOR ANCHORING INTO WOOD FRAMING OR 2X BUCK USE #10 FLAT HEAD WOOD SCREWS WITH SUFFICIENT LENGTH TO ACHIEVE A 1 3/8" MINIMUM EMBEDMENT INTO SUBSTRATE WITH 3/4" MINIMUM EDGE DISTANCE. LOCATE ANCHORS AS SHOWN IN ELEVATIONS AND INSTALLATION DETAILS. ANCHOR LOCATIONS HAVE +/- 1" TOLERANCE.
 - 5.3. FOR ANCHORING INTO METAL STRUCTURE USE #10 FLAT HEAD SMS OR SELF DRILLING SCREWS WITH SUFFICIENT LENGTH TO ACHIEVE 3 THREADS MINIMUM BEYOND STRUCTURE INTERIOR WALL WITH 3/4" MINIMUM EDGE DISTANCE. LOCATE ANCHORS AS SHOWN IN ELEVATIONS AND INSTALLATION DETAILS. ANCHOR LOCATIONS HAVE +/- 1" TOLERANCE.
6. INTERIOR AND EXTERIOR FINISHES BY OTHERS. NOT SHOWN FOR CLARITY.
7. PERIMETER AND JOINT SEALANT BY OTHERS TO BE DESIGNED AND/OR SPECIFIED IN ACCORDANCE WITH ASTM E2112.

PROJECT #418-1002

REGENCY PLUS, INC.
 2000 LOCUST GAP HIGHWAY
 MT. CARMEL, PA 17851

TITLE: SERIES 7313 VINYL TILT DOUBLE HUNG WINDOW
 INSTALLATION DETAILS

DRAWN BY:	RJA	DATE:	1/11/18
SCALE:	N.T.S.	DRAWING NO.:	RPLS0070
REV:	A	SHEET:	2 OF 2



Robert J. Amoruso, P.E.
 Florida P.E. No. 49752

PTC Product Design Group, LLC
 PO Box 520775
 Longwood, FL 32752-0775
 321-690-1788 info@ptc-corp.com
 FBPE Certificate of Authorization
 No. 25935

BY	RJA	DATE	10/25/18
DESCRIPTION	REVISED ANCHORAGE	DATE	10/25/18
REV	A	DATE	10/25/18