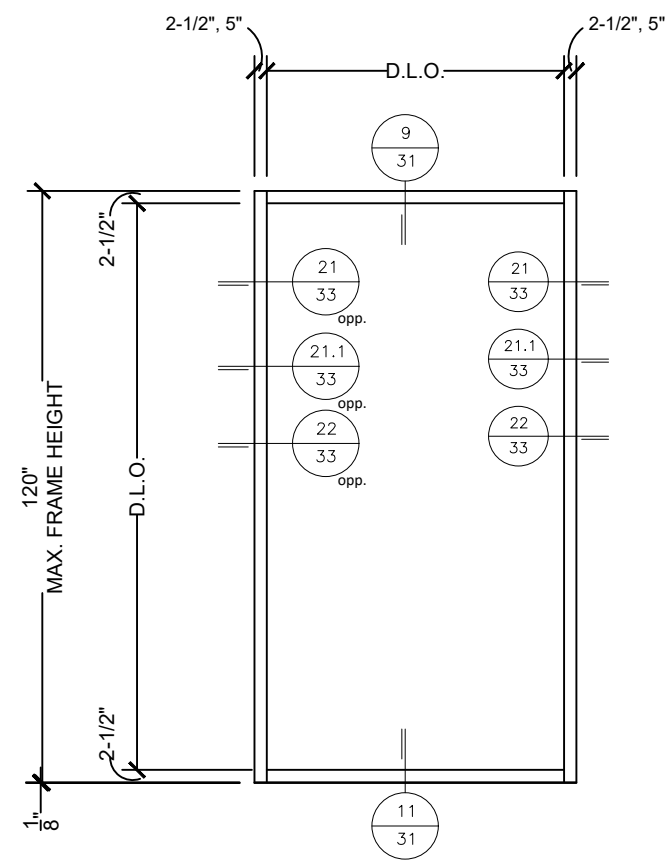


NOTE: HORIZONTAL MEMBER IS LIMITED TO 57 1/2" MAX. IN LENGTH

**INSIDE DRY GLAZED ELEVATIONS
(DEPICTED WITH FGT-5712 SUB SILL)
(LARGE & SMALL MISSILE IMPACT)**



TYPICAL SINGLE PANEL OPENING

FRAME SIZE FOR SINGLE OPENINGS SHALL BE GOVERNED BY THE MAXIMUM ALLOWABLE D.L.O. DIMENSIONS DISPLAYED ON THE GLASS CHARTS

INSTRUCTIONS TO DETERMINE DESIGN PRESSURE RATING

STEP ①: USE THE GLASS LOADING TABLES TO DETERMINE THE ALLOWABLE PRESSURE OF THE GLASS.

STEP ②: USE THE MULLION LOADING TABLE TO DETERMINE THE ALLOWABLE PRESSURES FOR THE MULLIONS
NOTE: TO DETERMINE THE LOADS OF THE MULLIONS, SEE DIAGRAM ON PAGE 12

STEP ③: THE MINIMUM VALUE BETWEEN STEP ① AND STEP ② WILL DETERMINE THE DESIGN LOAD PRESSURE FOR THE STOREFRONT SYSTEM.

STEP ④: LESSER OF SILL / HEAD ALLOWABLE PRESSURE (PAGES 27-28) AND FASTENER SCHEDULE (PAGES 17-26) MUST MEET OR EXCEED DESIGN LOAD PRESSURE FOR THE STOREFRONT SYSTEM.

DOORS ARE SHOWN BY SEPARATE APPROVAL
LESSER PRESSURE WILL PREVAIL ON COMBINED PRODUCTS
MINIMUM SHIM SPACE REQUIRED 1/4", MAXIMUM SHIM SPACE 1/2"

FL#20665.3

ENGINEERING EXPRESS
POSTAL ADDRESS:
401 W. ATLANTIC AVE R10 #219
DELRAY BEACH, FL 33444
ENGINEERINGEXPRESS.COM

OLDCASTLE BUILDING ENVELOPE
803 AIRPORT ROAD
TERRELL, TX 75160
(972) 551-6100

FG-5750 STOREMAX THERMAL
IMPACT STOREFRONT SYSTEM
WET & DRY GLAZED

REMARKS	DATE
INIT. ISSUE	07/23/20
REVISIONS	03/11/22

COPYRIGHT ENGINEERING EXPRESS®

20-29229g

SCALE: NTS UNLESS NOTED

03 OF 41

c:\users\sam\engineering\express\production - documents\projects\20-29229 oldcastle - fg 5750\work\drawings & cad\fg-5750\20-29229g obe - fg-5750\20-29229.dwg

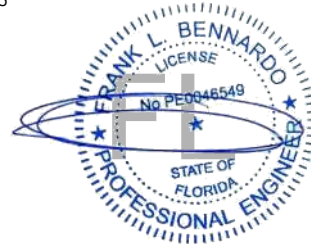
8/31/2022 2:17 PM SAM

c:\users\sam\engineering\express\production - documents\projects\20-29229 oldcastle - fg 5000 & fg 5100\revision order 8879\work\drawings & cad\fg-5750\20-29229g obe - fg-5750\fg-24-22.dwg

MAXIMUM ALLOWABLE STRESS DESIGN PRESSURE RATING FOR STANDARD MULLIONS WITH HEAD, SILL AND JAMB CONNECTIONS-ANCHOR TYPE A

Frank Bennardo
PE# 0046549 CA# 9885

AUGUST 31, 2022



FRAME HEIGHT (IN)	TRIBUTARY WIDTH (IN)	TOTAL NUMBER OF ANCHORS AT THE CLUSTER-ANCHOR TYPE A													
		2		4		6		8		10		12		16	
		MAX PRESSURE (PSF)	JAMBS MAX ANCHOR SPACING (IN)	MAX PRESSURE (PSF)	JAMBS MAX ANCHOR SPACING (IN)	MAX PRESSURE (PSF)	JAMBS MAX ANCHOR SPACING (IN)	MAX PRESSURE (PSF)	JAMBS MAX ANCHOR SPACING (IN)	MAX PRESSURE (PSF)	JAMBS MAX ANCHOR SPACING (IN)	MAX PRESSURE (PSF)	JAMBS MAX ANCHOR SPACING (IN)	MAX PRESSURE (PSF)	JAMBS MAX ANCHOR SPACING (IN)
132	24	40	66"O.C.	81	66"O.C.	90	44"O.C.	90	44"O.C.	90	44"O.C.	90	44"O.C.	90	44"O.C.
	36	27	66"O.C.	54	66"O.C.	81	44"O.C.	90	33"O.C.	90	33"O.C.	90	33"O.C.	90	33"O.C.
	48	20	66"O.C.	40	66"O.C.	61	44"O.C.	81	33"O.C.	90	26"O.C.	90	26"O.C.	90	26"O.C.
	60	16	66"O.C.	32	66"O.C.	49	44"O.C.	65	33"O.C.	81	26"O.C.	90	22"O.C.	90	22"O.C.
	72	13	66"O.C.	27	66"O.C.	40	44"O.C.	54	33"O.C.	68	26"O.C.	81	22"O.C.	90	19"O.C.
	78	12	66"O.C.	25	66"O.C.	37	44"O.C.	50	33"O.C.	62	26"O.C.	75	22"O.C.	90	17"O.C.
144	24	37	72"O.C.	75	72"O.C.	90	48"O.C.	90	48"O.C.	90	48"O.C.	90	48"O.C.	90	48"O.C.
	36	25	72"O.C.	50	72"O.C.	75	48"O.C.	90	36"O.C.	90	36"O.C.	90	36"O.C.	90	36"O.C.
	48	18	72"O.C.	37	72"O.C.	56	48"O.C.	75	36"O.C.	90	29"O.C.	90	29"O.C.	90	29"O.C.
	60	15	72"O.C.	30	72"O.C.	45	48"O.C.	60	36"O.C.	75	29"O.C.	90	24"O.C.	90	24"O.C.
	72	12	72"O.C.	25	72"O.C.	37	48"O.C.	50	36"O.C.	62	29"O.C.	75	24"O.C.	90	18"O.C.
	78	11	72"O.C.	23	72"O.C.	34	48"O.C.	46	36"O.C.	57	29"O.C.	69	24"O.C.	90	18"O.C.

FL#20665.3

ENGINEERING EXPRESS
 POSTAL ADDRESS:
 401 W. ATLANTIC AVE R10 #219
 DELRAY BEACH, FL 33444
 ENGINEERINGEXPRESS.COM

OLDCASTLE BUILDING ENVELOPE
 803 AIRPORT ROAD
 TERRELL, TX 75160
 (972) 551-6100
 FG-5750 STOREMAX THERMAL
 IMPACT STOREFRONT SYSTEM
 WET & DRY GLAZED

REMARKS	DRWN	CHKD	DATE
INIT. ISSUE	JEM	AJP	07/23/20
REVISIONS	SSO	RS	03/11/22

COPYRIGHT ENGINEERING EXPRESS®

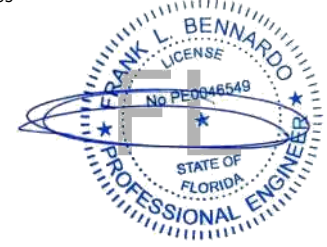
20-29229g

SCALE: NTS UNLESS NOTED

MAXIMUM ALLOWABLE STRESS DESIGN PRESSURE RATING FOR STANDARD MULLIONS WITH HEAD, SILL AND JAMB CONNECTIONS-ANCHOR TYPE C

Frank Bennardo
PE# 0046549 CA# 9885

AUGUST 31, 2022



FRAME HEIGHT (IN)	TRIBUTARY WIDTH (IN)	TOTAL NUMBER OF ANCHORS AT THE CLUSTER-ANCHOR TYPE C													
		2		4		6		8		10		12		16	
		MAX PRESSURE (PSF)	JAMBS MAX ANCHOR SPACING (IN)	MAX PRESSURE (PSF)	JAMBS MAX ANCHOR SPACING (IN)	MAX PRESSURE (PSF)	JAMBS MAX ANCHOR SPACING (IN)	MAX PRESSURE (PSF)	JAMBS MAX ANCHOR SPACING (IN)	MAX PRESSURE (PSF)	JAMBS MAX ANCHOR SPACING (IN)	MAX PRESSURE (PSF)	JAMBS MAX ANCHOR SPACING (IN)	MAX PRESSURE (PSF)	JAMBS MAX ANCHOR SPACING (IN)
84	24	48	42"O.C.	90	42"O.C.	90	42"O.C.	90	42"O.C.	90	42"O.C.	90	42"O.C.	90	42"O.C.
	36	32	42"O.C.	64	42"O.C.	90	28"O.C.	90	28"O.C.	90	28"O.C.	90	28"O.C.	90	28"O.C.
	48	24	42"O.C.	48	42"O.C.	72	28"O.C.	90	21"O.C.	90	21"O.C.	90	21"O.C.	90	21"O.C.
	60	19	42"O.C.	38	42"O.C.	58	28"O.C.	77	21"O.C.	90	17"O.C.	90	17"O.C.	90	17"O.C.
	72	16	42"O.C.	32	42"O.C.	48	28"O.C.	64	21"O.C.	80	17"O.C.	90	14"O.C.	90	14"O.C.
	78	14	42"O.C.	29	42"O.C.	44	28"O.C.	59	21"O.C.	74	17"O.C.	89	14"O.C.	90	12"O.C.
96	24	42	48"O.C.	85	48"O.C.	90	32"O.C.	90	32"O.C.	90	32"O.C.	90	32"O.C.	90	32"O.C.
	36	28	48"O.C.	56	48"O.C.	85	32"O.C.	90	24"O.C.	90	24"O.C.	90	24"O.C.	90	24"O.C.
	48	21	48"O.C.	42	48"O.C.	63	32"O.C.	85	24"O.C.	90	19"O.C.	90	19"O.C.	90	19"O.C.
	60	17	48"O.C.	34	48"O.C.	51	32"O.C.	68	24"O.C.	85	19"O.C.	90	16"O.C.	90	16"O.C.
	72	14	48"O.C.	28	48"O.C.	42	32"O.C.	56	24"O.C.	70	19"O.C.	85	16"O.C.	90	14"O.C.
	78	13	48"O.C.	26	48"O.C.	39	32"O.C.	52	24"O.C.	65	19"O.C.	78	16"O.C.	90	14"O.C.
108	24	37	54"O.C.	75	54"O.C.	90	36"O.C.	90	36"O.C.	90	36"O.C.	90	36"O.C.	90	36"O.C.
	36	25	54"O.C.	50	54"O.C.	75	36"O.C.	90	27"O.C.	90	27"O.C.	90	27"O.C.	90	27"O.C.
	48	18	54"O.C.	37	54"O.C.	56	36"O.C.	75	27"O.C.	90	22"O.C.	90	22"O.C.	90	22"O.C.
	60	15	54"O.C.	30	54"O.C.	45	36"O.C.	60	27"O.C.	75	22"O.C.	90	18"O.C.	90	18"O.C.
	72	12	54"O.C.	25	54"O.C.	37	36"O.C.	50	27"O.C.	62	22"O.C.	75	18"O.C.	90	14"O.C.
	78	11	54"O.C.	23	54"O.C.	34	36"O.C.	46	27"O.C.	58	22"O.C.	69	18"O.C.	90	14"O.C.
120	24	34	60"O.C.	68	60"O.C.	90	40"O.C.	90	40"O.C.	90	40"O.C.	90	40"O.C.	90	40"O.C.
	36	22	60"O.C.	45	60"O.C.	68	40"O.C.	90	30"O.C.	90	30"O.C.	90	30"O.C.	90	30"O.C.
	48	17	60"O.C.	34	60"O.C.	51	40"O.C.	68	30"O.C.	85	24"O.C.	90	20"O.C.	90	20"O.C.
	60	13	60"O.C.	27	60"O.C.	40	40"O.C.	54	30"O.C.	68	24"O.C.	81	20"O.C.	90	17"O.C.
	72	11	60"O.C.	22	60"O.C.	34	40"O.C.	45	30"O.C.	56	24"O.C.	68	20"O.C.	90	15"O.C.
	78	10	60"O.C.	20	60"O.C.	31	40"O.C.	41	30"O.C.	52	24"O.C.	62	20"O.C.	83	15"O.C.

FL#20665.3

ENGINEERING EXPRESS
 POSTAL ADDRESS:
 401 W. ATLANTIC AVE R10 #219
 DELRAY BEACH, FL 33444
 ENGINEERINGEXPRESS.COM

OLDCASTLE BUILDING ENVELOPE
 803 AIRPORT ROAD
 TERRELL, TX 75160
 (972) 551-6100
 FG-5750 STOREMAX THERMAL
 IMPACT STOREFRONT SYSTEM
 WET & DRY GLAZED

REMARKS	DRWN	CHKD	DATE
INIT ISSUE	JEM	AJP	07/23/20
REVISIONS	SSG	RS	03/11/22

COPYRIGHT ENGINEERING EXPRESS®

20-29229g

SCALE: NTS UNLESS NOTED

25

OF 41

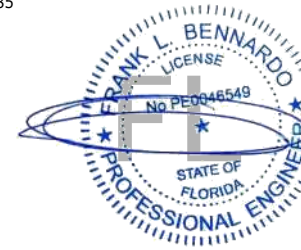
c:\users\sam\engineering\express\production - documents\projects\20-29229 oldcastle - fg 5000 & fg 5100\revision order 8879\work\drawings & cad\fg-5750\20-29229g obe - fg-5750\g-24-22.dwg 8/31/2022 2:17 PM SAM

c:\users\sam\engineering\express\production - documents\projects\20-29229 oldcastle - fg 5000 & fg 5100\revision order 8879\work\drawings & cad\fg-5750\20-29229g obe - fg-5750\g 8-24-22.dwg
8/31/2022 2:17 PM SAM

MAXIMUM ALLOWABLE STRESS DESIGN PRESSURE RATING FOR STANDARD MULLIONS WITH HEAD, SILL AND JAMB CONNECTIONS-ANCHOR TYPE C

Frank Bennardo
PE# 0046549 CA# 9885

AUGUST 31, 2022



FRAME HEIGHT (IN)	TRIBUTARY WIDTH (IN)	TOTAL NUMBER OF ANCHORS AT THE CLUSTER-ANCHOR TYPE C													
		2		4		6		8		10		12		16	
		MAX PRESSURE (PSF)	JAMBS MAX ANCHOR SPACING (IN)	MAX PRESSURE (PSF)	JAMBS MAX ANCHOR SPACING (IN)	MAX PRESSURE (PSF)	JAMBS MAX ANCHOR SPACING (IN)	MAX PRESSURE (PSF)	JAMBS MAX ANCHOR SPACING (IN)	MAX PRESSURE (PSF)	JAMBS MAX ANCHOR SPACING (IN)	MAX PRESSURE (PSF)	JAMBS MAX ANCHOR SPACING (IN)	MAX PRESSURE (PSF)	JAMBS MAX ANCHOR SPACING (IN)
132	24	30	66"O.C.	61	66"O.C.	90	44"O.C.	90	44"O.C.	90	44"O.C.	90	44"O.C.	90	44"O.C.
	36	20	66"O.C.	41	66"O.C.	61	44"O.C.	82	33"O.C.	90	26"O.C.	90	26"O.C.	90	26"O.C.
	48	15	66"O.C.	30	66"O.C.	46	44"O.C.	61	33"O.C.	77	26"O.C.	90	22"O.C.	90	22"O.C.
	60	12	66"O.C.	24	66"O.C.	37	44"O.C.	49	33"O.C.	61	26"O.C.	74	22"O.C.	90	17"O.C.
	72	10	66"O.C.	20	66"O.C.	30	44"O.C.	41	33"O.C.	51	26"O.C.	61	22"O.C.	82	17"O.C.
	78	9	66"O.C.	19	66"O.C.	28	44"O.C.	38	33"O.C.	47	26"O.C.	57	22"O.C.	76	17"O.C.
144	24	28	72"O.C.	56	72"O.C.	85	48"O.C.	90	36"O.C.	90	36"O.C.	90	36"O.C.	90	36"O.C.
	36	18	72"O.C.	37	72"O.C.	56	48"O.C.	75	36"O.C.	90	29"O.C.	90	29"O.C.	90	29"O.C.
	48	14	72"O.C.	28	72"O.C.	42	48"O.C.	56	36"O.C.	70	29"O.C.	85	24"O.C.	90	21"O.C.
	60	11	72"O.C.	22	72"O.C.	34	48"O.C.	45	36"O.C.	56	29"O.C.	68	24"O.C.	90	18"O.C.
	72	9	72"O.C.	18	72"O.C.	28	48"O.C.	37	36"O.C.	47	29"O.C.	56	24"O.C.	75	18"O.C.
	78	8	72"O.C.	17	72"O.C.	26	48"O.C.	34	36"O.C.	43	29"O.C.	52	24"O.C.	69	18"O.C.

FL#20665.3

ENGINEERING EXPRESS

 POSTAL ADDRESS:
 401 W. ATLANTIC AVE R10 #219
 DELRAY BEACH, FL 33444
 ENGINEERINGEXPRESS.COM

OLDCASTLE BUILDING ENVELOPE[®]
 803 AIRPORT ROAD
 TERRELL, TX 75160
 (972) 551-6100

FG-5750 STOREMAX[®] THERMAL
 IMPACT STOREFRONT SYSTEM
 WET & DRY GLAZED

REMARKS	DRWN	CHKD	DATE
INIT. ISSUE	JEM	AJP	07/23/20
REVISIONS	SSQ	RS	03/11/22

COPYRIGHT ENGINEERING EXPRESS[®]

20-29229g

SCALE: NTS UNLESS NOTED

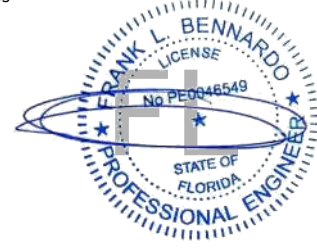
26

OF 41

MAXIMUM ALLOWABLE STRESS DESIGN PRESSURE RATING FOR STANDARD MULLIONS WITH HEAD, SILL AND JAMB CONNECTIONS-ANCHOR TYPE D

Frank Bennardo
PE# 0046549 CA# 9885

AUGUST 31, 2022



FL#20665.3

ENGINEERING EXPRESS
 POSTAL ADDRESS:
 401 W. ATLANTIC AVE R10 #219
 DELRAY BEACH, FL 33444
 ENGINEERINGEXPRESS.COM

OLDCASTLE BUILDING ENVELOPE

803 AIRPORT ROAD
 TERRELL, TX 75160
 (972) 551-6100

FG-5750 STOREMAX THERMAL
 IMPACT STOREFRONT SYSTEM
 WET & DRY GLAZED

REMARKS	DRWN	CHKD	DATE
INIT ISSUE	JEM	AJP	07/23/20
REVISIONS	SSG	RS	03/11/22

COPYRIGHT ENGINEERING EXPRESS®

20-29229g

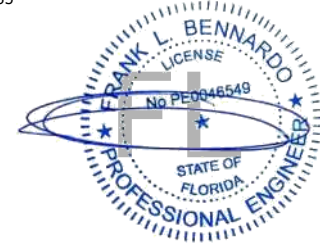
SCALE: NTS UNLESS NOTED

28

41

FRAME HEIGHT (IN)	TRIBUTARY WIDTH (IN)	TOTAL NUMBER OF ANCHORS AT THE CLUSTER-ANCHOR TYPE D													
		2		4		6		8		10		12		16	
		MAX PRESSURE (PSF)	JAMBS MAX ANCHOR SPACING (IN)	MAX PRESSURE (PSF)	JAMBS MAX ANCHOR SPACING (IN)	MAX PRESSURE (PSF)	JAMBS MAX ANCHOR SPACING (IN)	MAX PRESSURE (PSF)	JAMBS MAX ANCHOR SPACING (IN)	MAX PRESSURE (PSF)	JAMBS MAX ANCHOR SPACING (IN)	MAX PRESSURE (PSF)	JAMBS MAX ANCHOR SPACING (IN)	MAX PRESSURE (PSF)	JAMBS MAX ANCHOR SPACING (IN)
84	24	44	42" O.C.	88	42" O.C.	90	28" O.C.	90	28" O.C.	90	28" O.C.	90	28" O.C.	90	28" O.C.
	36	29	42" O.C.	59	42" O.C.	88	28" O.C.	90	21" O.C.	90	21" O.C.	90	21" O.C.	90	21" O.C.
	48	22	42" O.C.	44	42" O.C.	66	28" O.C.	88	21" O.C.	90	17" O.C.	90	17" O.C.	90	17" O.C.
	60	17	42" O.C.	35	42" O.C.	53	28" O.C.	70	21" O.C.	88	17" O.C.	90	14" O.C.	90	14" O.C.
	72	14	42" O.C.	29	42" O.C.	44	28" O.C.	59	21" O.C.	73	17" O.C.	88	14" O.C.	90	12" O.C.
	78	13	42" O.C.	27	42" O.C.	40	28" O.C.	54	21" O.C.	68	17" O.C.	81	14" O.C.	90	12" O.C.
96	24	38	48" O.C.	77	48" O.C.	90	32" O.C.	90	32" O.C.	90	32" O.C.	90	32" O.C.	90	32" O.C.
	36	25	48" O.C.	51	48" O.C.	77	32" O.C.	90	24" O.C.	90	24" O.C.	90	24" O.C.	90	24" O.C.
	48	19	48" O.C.	38	48" O.C.	58	32" O.C.	77	24" O.C.	90	19" O.C.	90	19" O.C.	90	19" O.C.
	60	15	48" O.C.	31	48" O.C.	46	32" O.C.	62	24" O.C.	77	19" O.C.	90	16" O.C.	90	16" O.C.
	72	12	48" O.C.	25	48" O.C.	38	32" O.C.	51	24" O.C.	64	19" O.C.	77	16" O.C.	90	14" O.C.
	78	11	48" O.C.	23	48" O.C.	35	32" O.C.	47	24" O.C.	59	19" O.C.	71	16" O.C.	90	12" O.C.
108	24	34	54" O.C.	68	54" O.C.	90	36" O.C.	90	36" O.C.	90	36" O.C.	90	36" O.C.	90	36" O.C.
	36	22	54" O.C.	45	54" O.C.	68	36" O.C.	90	27" O.C.	90	27" O.C.	90	27" O.C.	90	27" O.C.
	48	17	54" O.C.	34	54" O.C.	51	36" O.C.	68	27" O.C.	86	22" O.C.	90	18" O.C.	90	18" O.C.
	60	13	54" O.C.	27	54" O.C.	41	36" O.C.	55	27" O.C.	68	22" O.C.	82	18" O.C.	90	15" O.C.
	72	11	54" O.C.	22	54" O.C.	34	36" O.C.	45	27" O.C.	57	22" O.C.	68	18" O.C.	90	14" O.C.
	78	10	54" O.C.	21	54" O.C.	31	36" O.C.	42	27" O.C.	52	22" O.C.	63	18" O.C.	84	14" O.C.
120	24	31	60" O.C.	62	60" O.C.	90	40" O.C.	90	40" O.C.	90	40" O.C.	90	40" O.C.	90	40" O.C.
	36	20	60" O.C.	41	60" O.C.	62	40" O.C.	82	30" O.C.	90	24" O.C.	90	24" O.C.	90	24" O.C.
	48	15	60" O.C.	31	60" O.C.	46	40" O.C.	62	30" O.C.	77	24" O.C.	90	20" O.C.	90	20" O.C.
	60	12	60" O.C.	24	60" O.C.	37	40" O.C.	49	30" O.C.	62	24" O.C.	74	20" O.C.	90	15" O.C.
	72	10	60" O.C.	20	60" O.C.	31	40" O.C.	41	30" O.C.	51	24" O.C.	62	20" O.C.	82	15" O.C.
	78	9	60" O.C.	19	60" O.C.	28	40" O.C.	38	30" O.C.	47	24" O.C.	57	20" O.C.	76	15" O.C.

c:\users\sam\engineering\express\production - documents\projects\20-29229 oldcastle - fg_5000 & fg_5100\revision order 8879\work\drawings & cad\fg-5750\20-29229g_obe - fg-5750tq-8-24-22.dwg 8/31/2022 2:17 PM SAM



FL#20665.3

ENGINEERING EXPRESS
POSTAL ADDRESS:
401 W. ATLANTIC AVE R10 #219
DELRAY BEACH, FL 33444
ENGINEERINGEXPRESS.COM

OLDCASTLE BUILDING ENVELOPE

803 AIRPORT ROAD
TERRELL, TX 75160
(972) 551-6100

FG-5750 STOREMAX THERMAL
IMPACT STOREFRONT SYSTEM
WET & DRY GLAZED

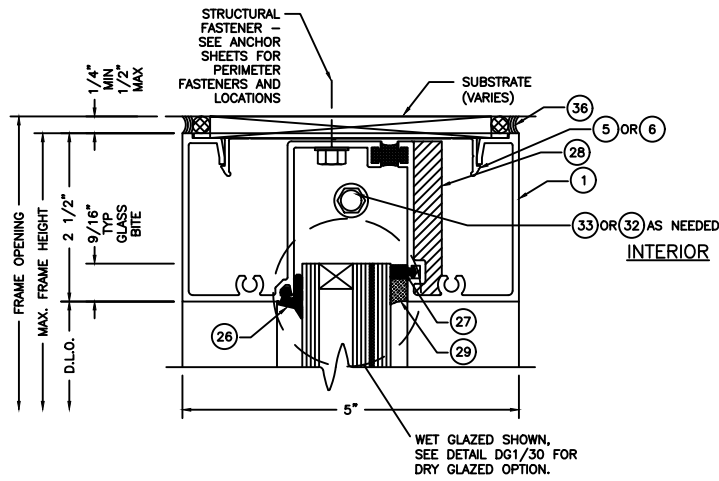
REMARKS	DRWN	CHKD	DATE
INIT ISSUE	JEM	AJP	07/23/20
REVISIONS	SSO	RS	03/11/22

COPYRIGHT ENGINEERING EXPRESS®

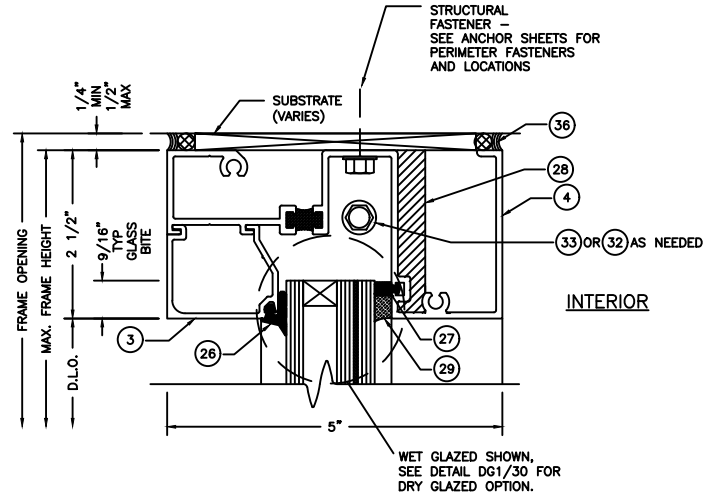
20-29229g

SCALE: NTS UNLESS NOTED

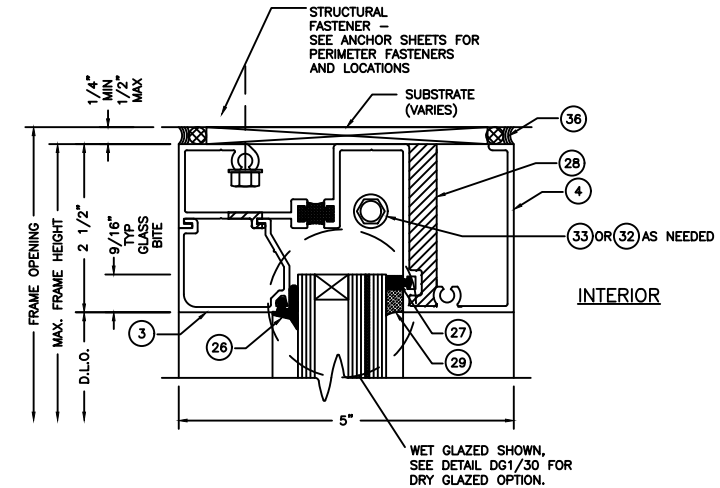
30 OF 41



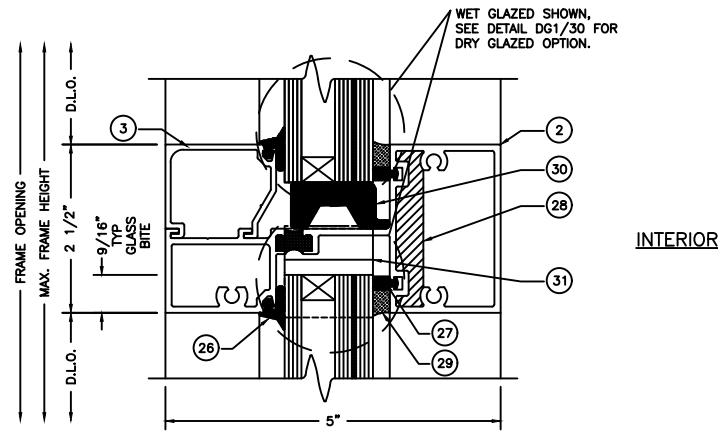
1 HEAD
LIMITED TO +70 / -70 P.S.F



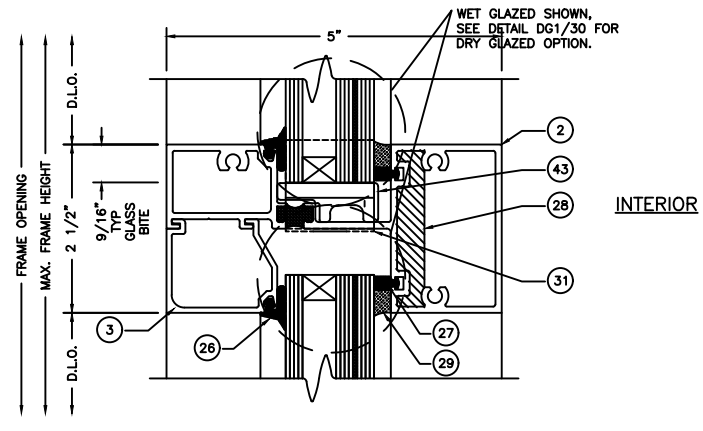
4 INVERTED HEAD
LIMITED TO +70 / -70 P.S.F



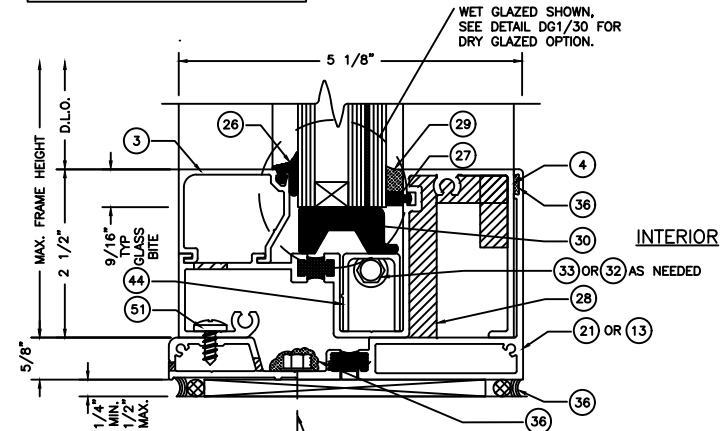
4A ALTERNATE INVERTED HEAD
LIMITED TO +70 / -70 P.S.F



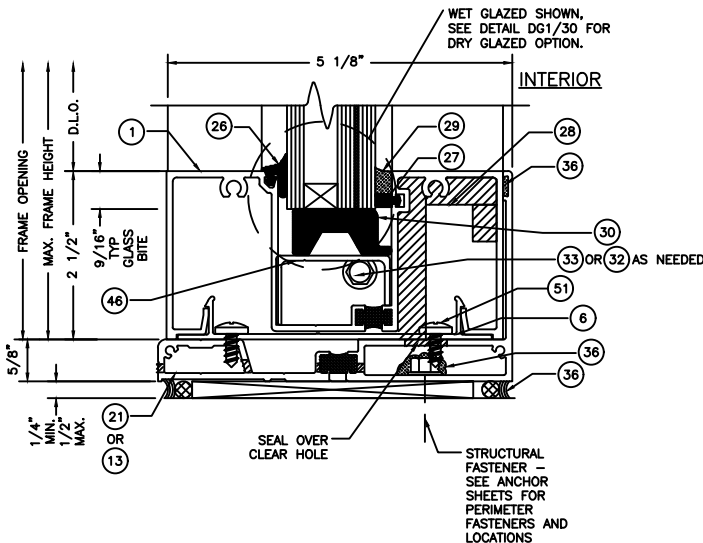
2 INTERMEDIATE HORIZONTAL
LIMITED TO +70 / -70 P.S.F



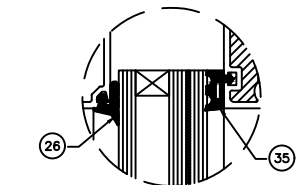
5 INVERTED INTERMEDIATE HORIZONTAL
LIMITED TO +70 / -70 P.S.F



7 SILL
LIMITED TO +70 / -70 P.S.F



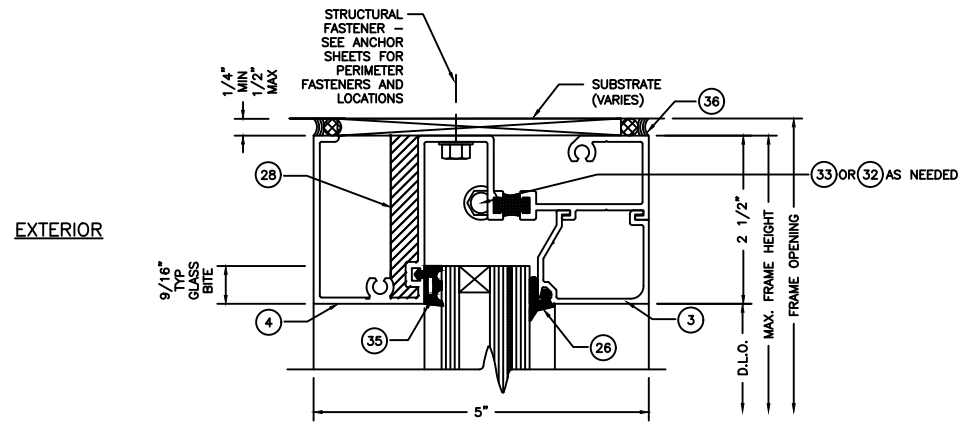
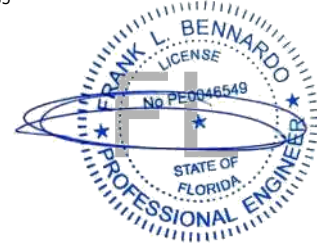
6 INVERTED SILL
LIMITED TO +70 / -70 P.S.F



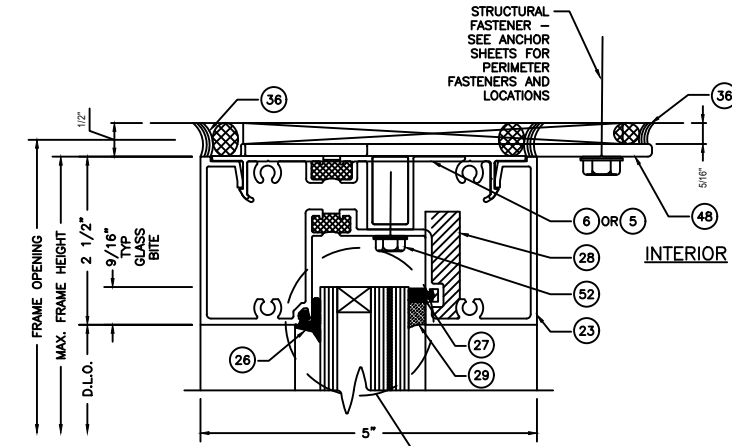
DG1 DRY GLAZED OPTION

LOCATE REINFORCEMENT FASTENERS
1-1/4" FROM EACH END.

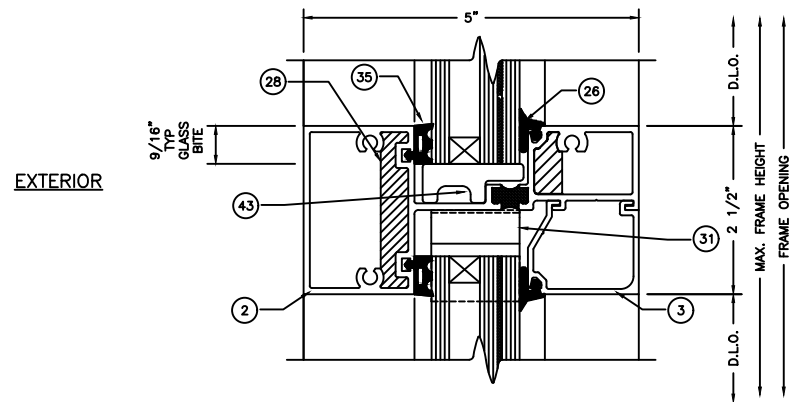
c:\users\sam\engineering\express\production - documents\projects\20-29229 oldcastle - fg 5750 & fg 5100\revision order 8879\work\drawings & cad\fg-5750\20-29229g obe - fg-5750\g 8-24-22.dwg 8/31/2022 2:18 PM SAM



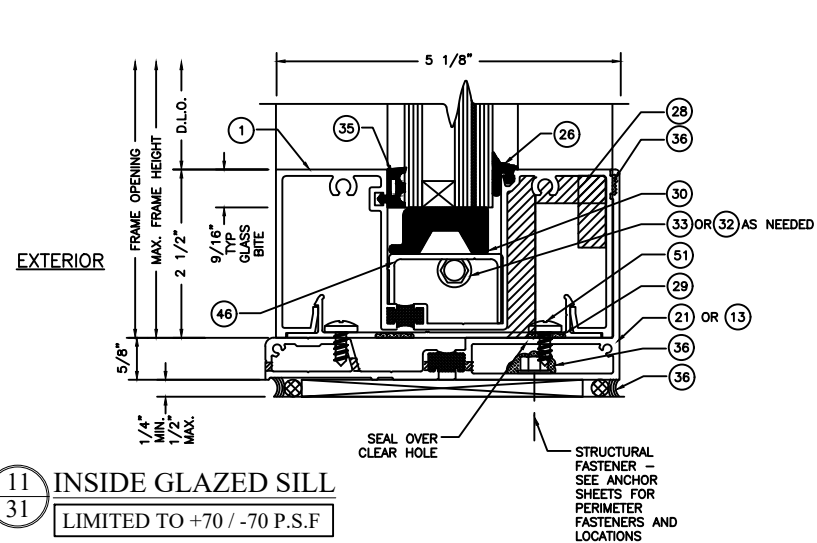
9 INSIDE GLAZED HEAD
31 LIMITED TO +70 / -70 P.S.F



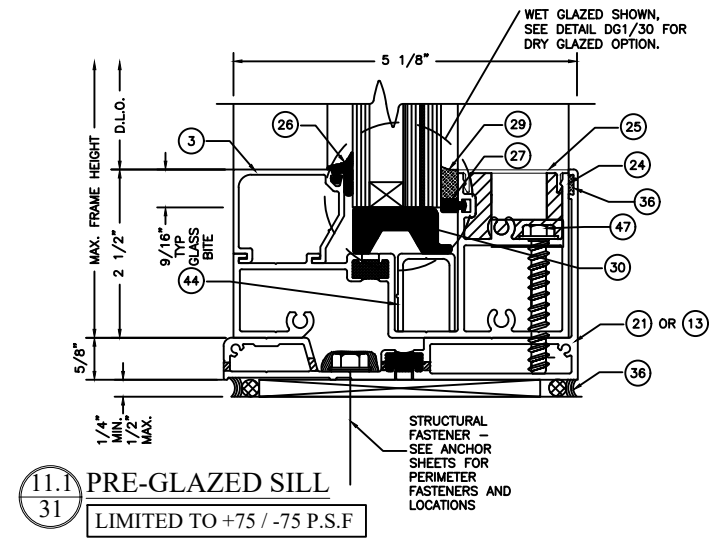
10.1 PRE-GLAZED HEAD
31 LIMITED TO +75 / -75 P.S.F



10 INSIDE GLAZED INTERMEDIATE HORIZONTAL
31 LIMITED TO +70 / -70 P.S.F



11 INSIDE GLAZED SILL
31 LIMITED TO +70 / -70 P.S.F



11.1 PRE-GLAZED SILL
31 LIMITED TO +75 / -75 P.S.F

LOCATE REINFORCEMENT FASTENERS
1-1/4" FROM EACH END.

FL#20665.3

ENGINEERING EXPRESS
POSTAL ADDRESS:
401 W. ATLANTIC AVE R10 #219
DELRAY BEACH, FL 33444
ENGINEERINGEXPRESS.COM

OLDCASTLE BUILDING ENVELOPE
803 AIRPORT ROAD
TERRELL, TX 75160
(972) 551-6100
FG-5750 STOREMAX THERMAL
IMPACT STOREFRONT SYSTEM
WET & DRY GLAZED

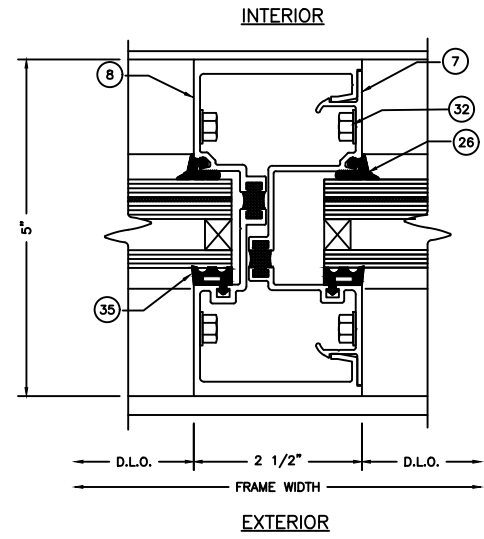
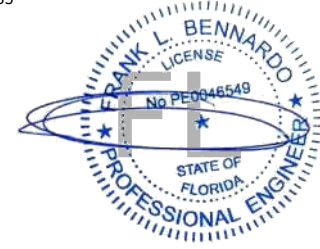
REMARKS	DRWN	CHKD	DATE
INIT. ISSUE	JEM	AJP	07/23/20
REVISIONS	SSQ	RS	03/11/22

COPYRIGHT ENGINEERING EXPRESS

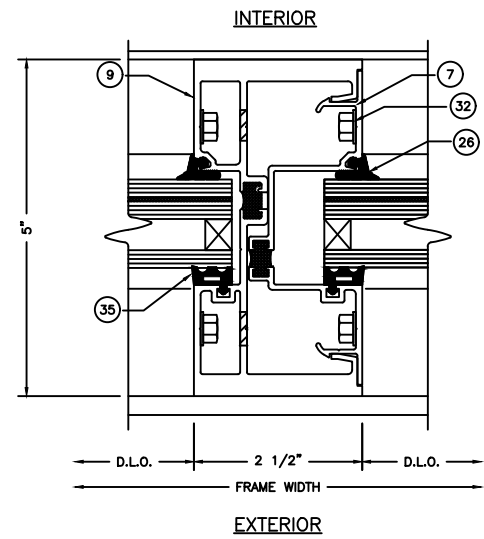
20-29229g

SCALE: NTS UNLESS NOTED

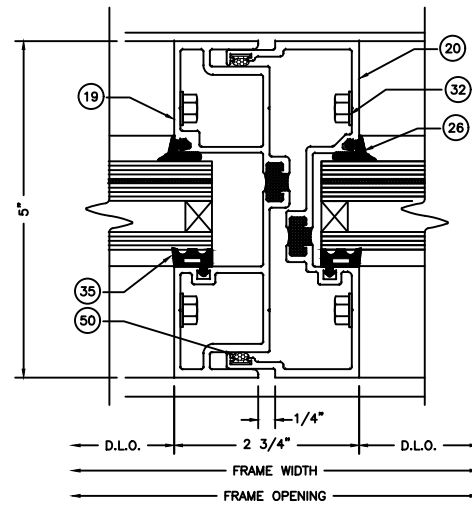
31 OF 41



12
32 INSIDE SET VERTICAL
M1

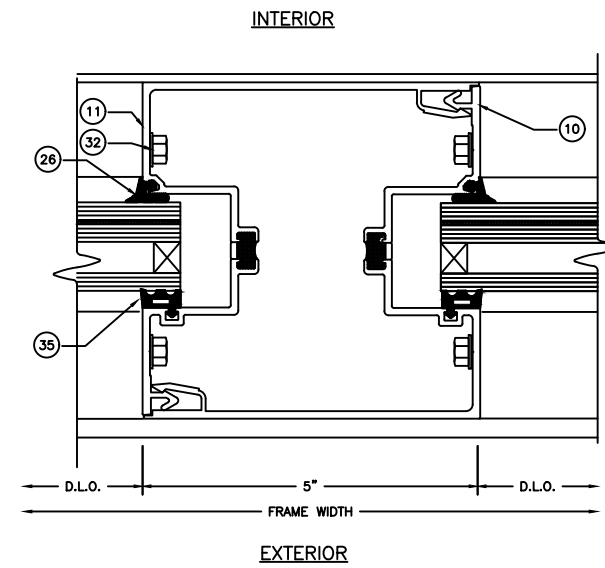


13
32 INSIDE SET HEAVY VERTICAL
M3

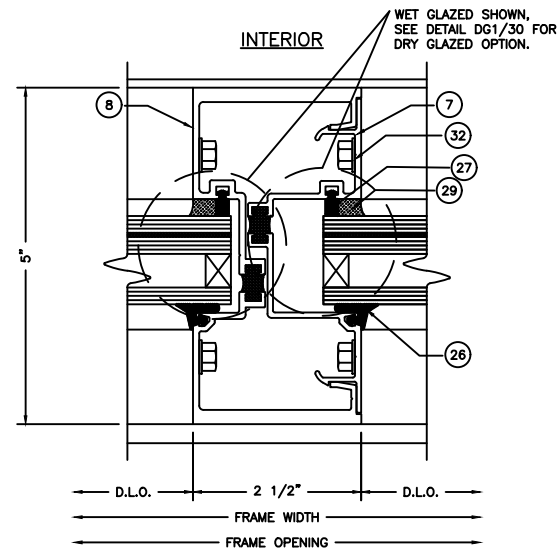


14
32 INSIDE SET EXPANSION
VERTICAL
M2

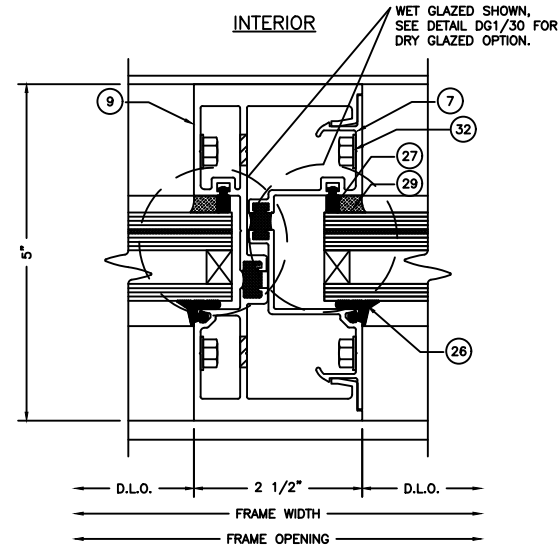
NOTE: APPROVED FOR USE
OUTSIDE HVHZ



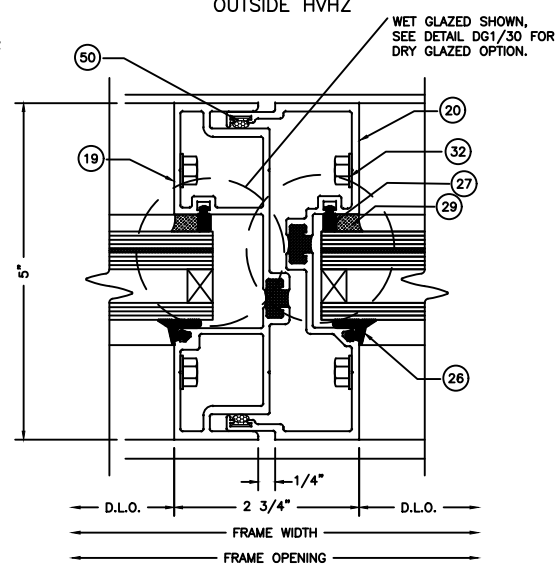
15
32 INSIDE SET 5" VERTICAL MULLION
M7



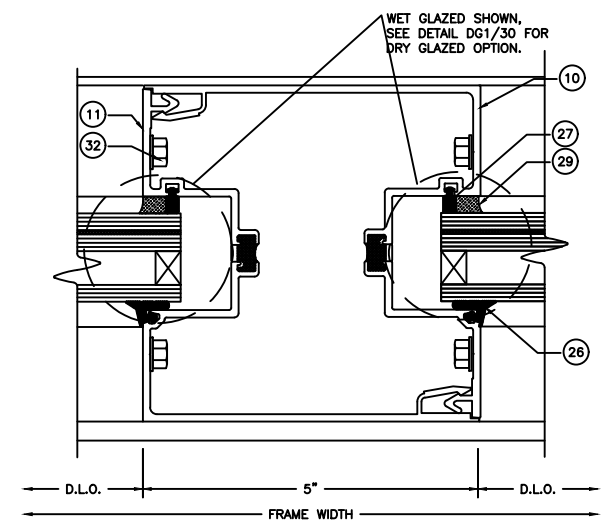
16
32 STANDARD VERTICAL
M1



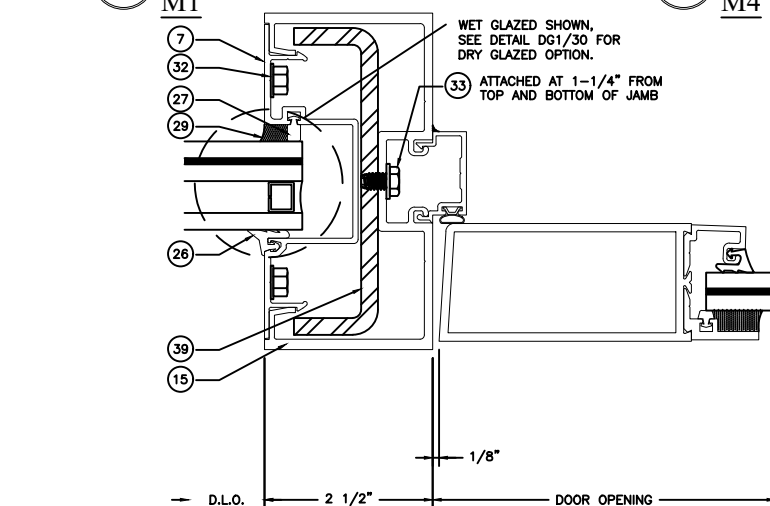
17
32 HEAVY VERTICAL
M4



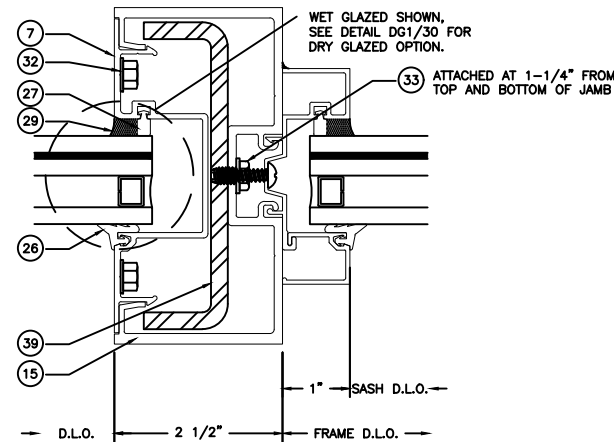
18
32 EXPANSION VERTICAL
M2 NOTE: APPROVED FOR USE
OUTSIDE HVHZ



19
32 5" VERTICAL MULLION
M7



16.1
32 INTERMEDIATE DOOR JAMB AT SIDELITE
M8



16.2
32 INTERMEDIATE TRANSOM MULLION AT SIDELITE
M8

FL#20665.3

**ENGINEERING
EXPRESS**
POSTAL ADDRESS:
401 W. ATLANTIC AVE R10 #219
DELRAY BEACH, FL 33444
ENGINEERINGEXPRESS.COM

OLDCASTLE BUILDING ENVELOPE
803 AIRPORT ROAD
TERRELL, TX 75160
(972) 551-6100

FG-5750 STOREMAX THERMAL
IMPACT STOREFRONT SYSTEM
WET & DRY GLAZED

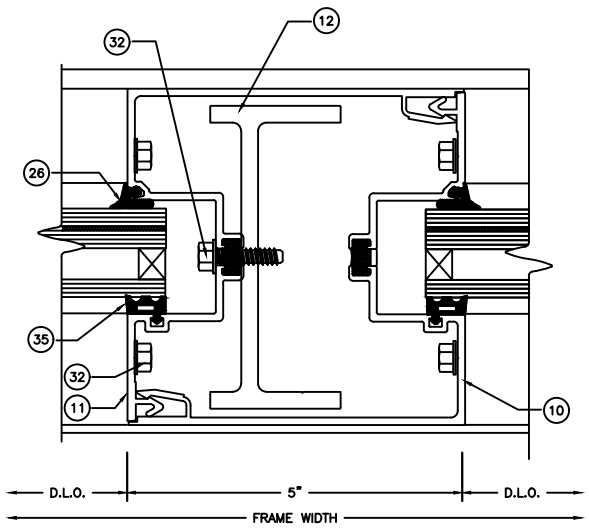
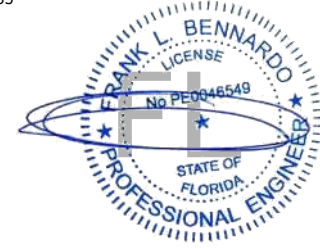
REMARKS	DATE
INIT. ISSUE	07/23/20
REVISIONS	03/11/22

COPYRIGHT ENGINEERING EXPRESS®

20-29229g

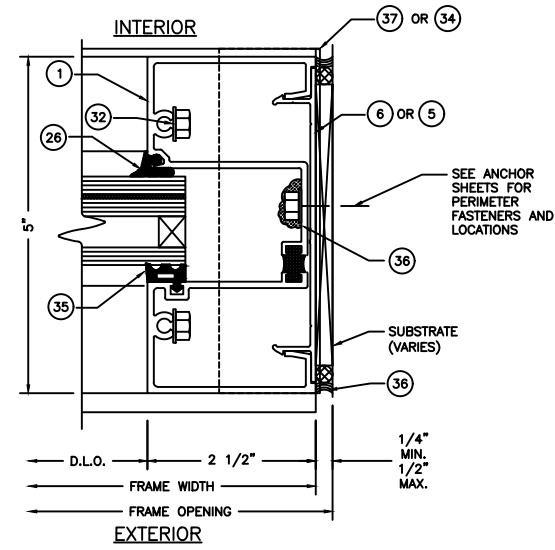
SCALE: NTS UNLESS NOTED

32 OF 41

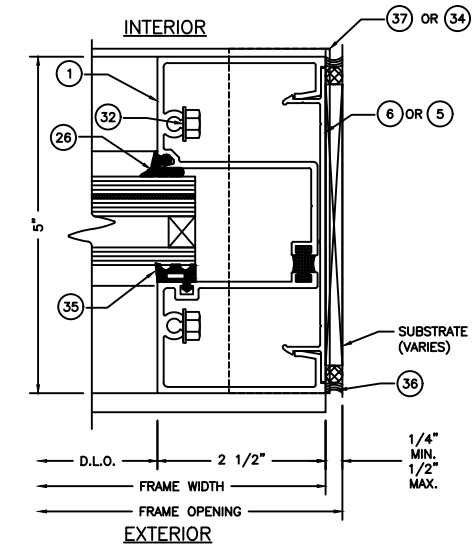


20 INSIDE SET 5" VERTICAL MULLION
33 WITH FG-5720 REINFORCEMENT

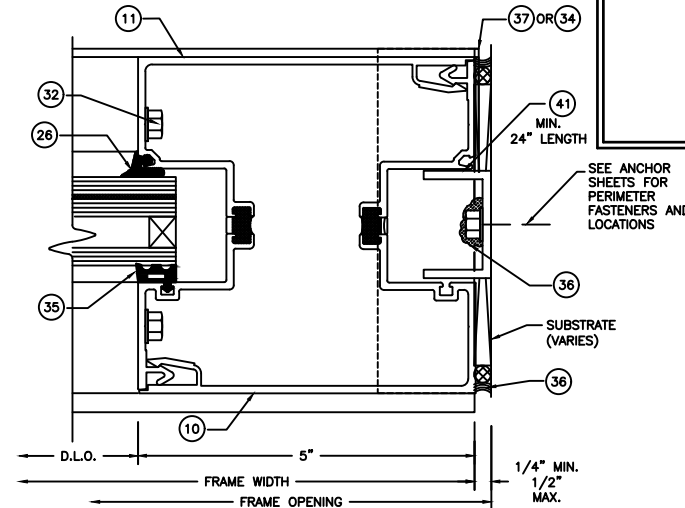
NOTE:
MULLION CAN BE USED UNDER SITE SPECIFIC
ENGINEERING AND SHALL BE APPROVED BY
THE AUTHORITY HAVING JURISDICTION (AHJ).



21 INSIDE SET JAMB VERTICAL
33

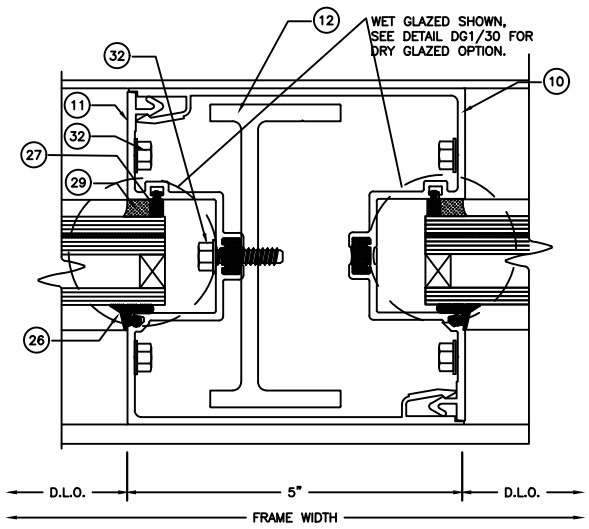


21.1 INSIDE SET JAMB VERTICAL
33 (NON ANCHORED)
J1



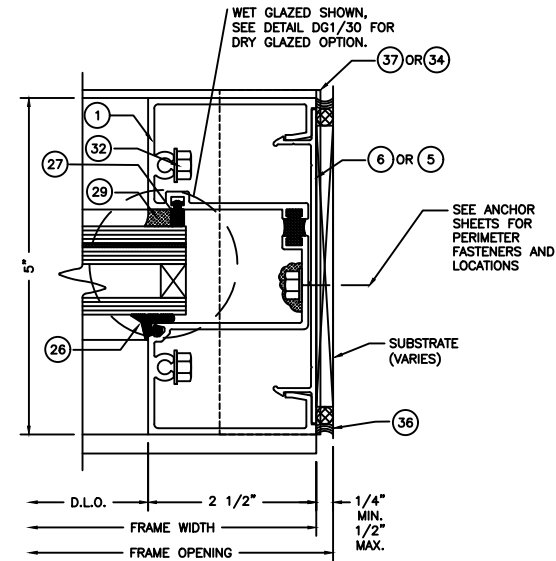
22 INSIDE SET 5" JAMB VERTICAL
33

NOTE:
MULLION CAN BE USED UNDER SITE SPECIFIC
ENGINEERING AND SHALL BE APPROVED BY
THE AUTHORITY HAVING JURISDICTION (AHJ).

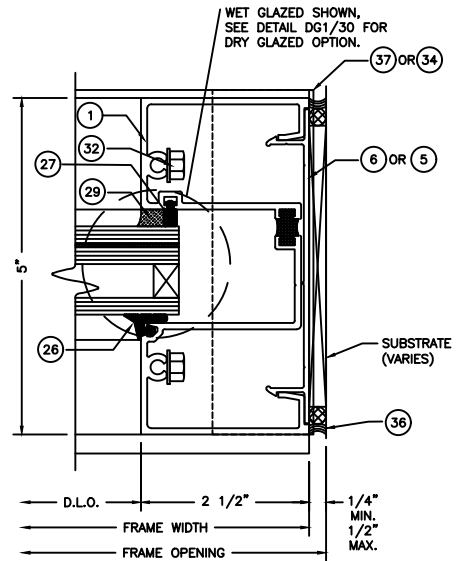


23 5" VERTICAL MULLION
33 WITH FG-5720 REINFORCEMENT

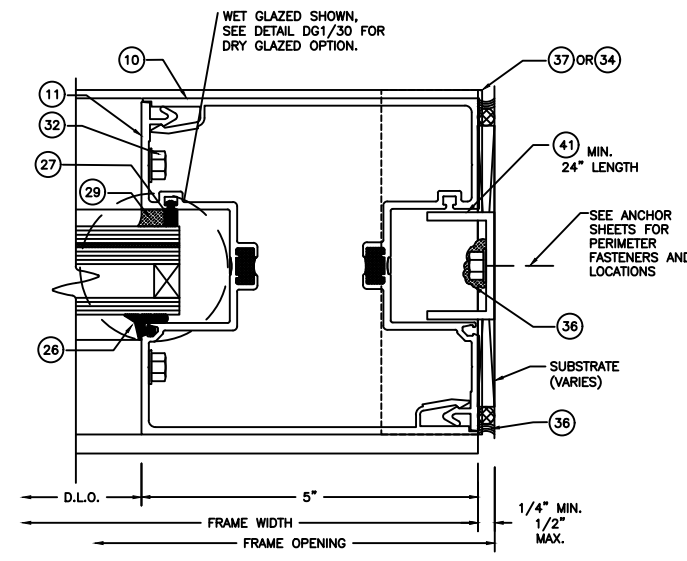
NOTE:
MULLION CAN BE USED UNDER SITE SPECIFIC
ENGINEERING AND SHALL BE APPROVED BY
THE AUTHORITY HAVING JURISDICTION (AHJ).



24 JAMB VERTICAL
33



24.1 JAMB VERTICAL (NON ANCHORED)
33 J1



25 5" JAMB VERTICAL
33

NOTE:
MULLION CAN BE USED UNDER SITE SPECIFIC
ENGINEERING AND SHALL BE APPROVED BY
THE AUTHORITY HAVING JURISDICTION (AHJ).

LOCATE REINFORCEMENT FASTENERS
1-1/4" FROM EACH END.

FL#20665.3

ENGINEERING EXPRESS
POSTAL ADDRESS:
401 W. ATLANTIC AVE R10 #219
DELRAY BEACH, FL 33444
ENGINEERINGEXPRESS.COM

OLDCASTLE BUILDING ENVELOPE
803 AIRPORT ROAD
TERRELL, TX 75160
(972) 551-6100
FG-5750 STOREMAX THERMAL
IMPACT STOREFRONT SYSTEM
WET & DRY GLAZED

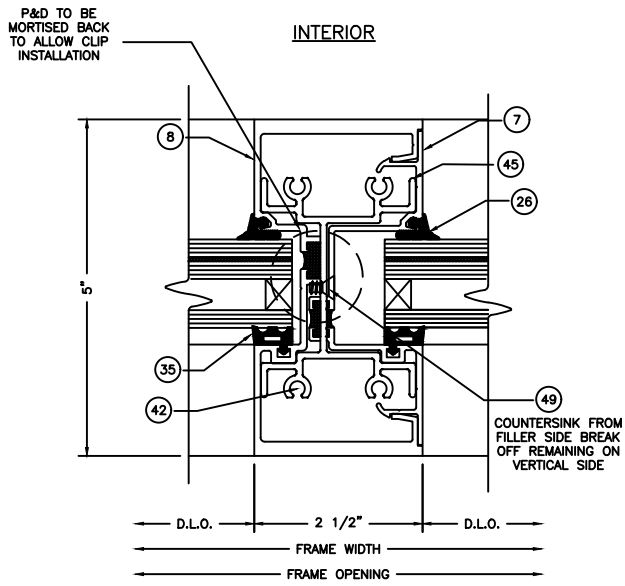
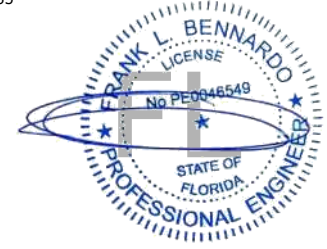
REMARKS	DATE	DRWN	CHKD
INIT. ISSUE	07/23/20	JEM	AJP
REVISIONS	03/11/22	SSG	RS

COPYRIGHT ENGINEERING EXPRESS®

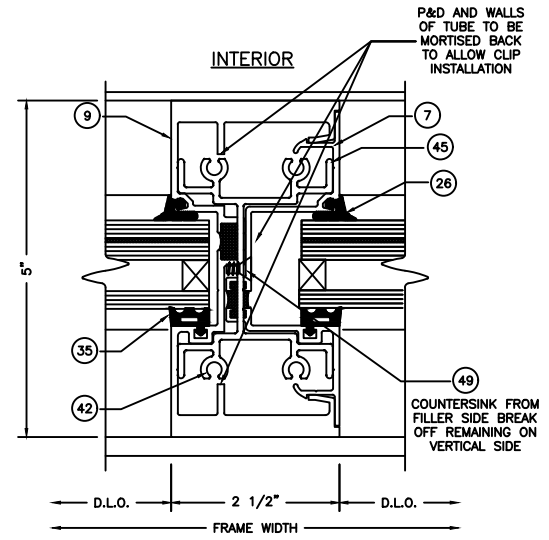
20-29229g

SCALE: NTS UNLESS NOTED

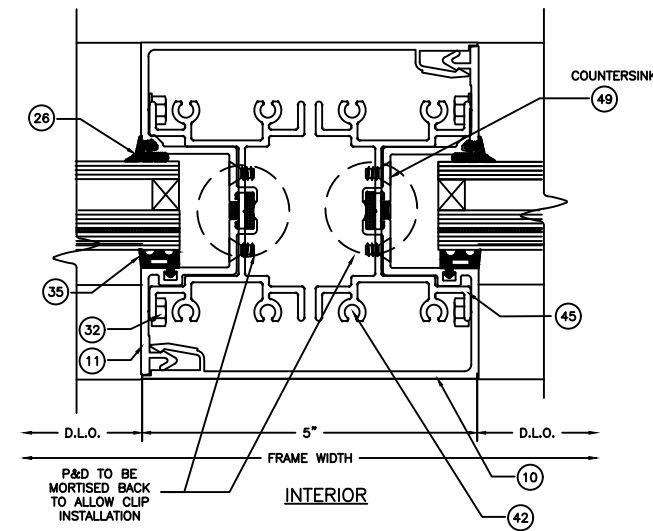
c:\users\sam\engineering\express\production - documents\projects\20-29229 oldcastle - fg 5000 & fg 5100\revision order 8879\work\drawings & cad\fg-5750\20-29229g obe - fg-5750\fg 8-24-22.dwg 8/31/2022 2:18 PM SAM



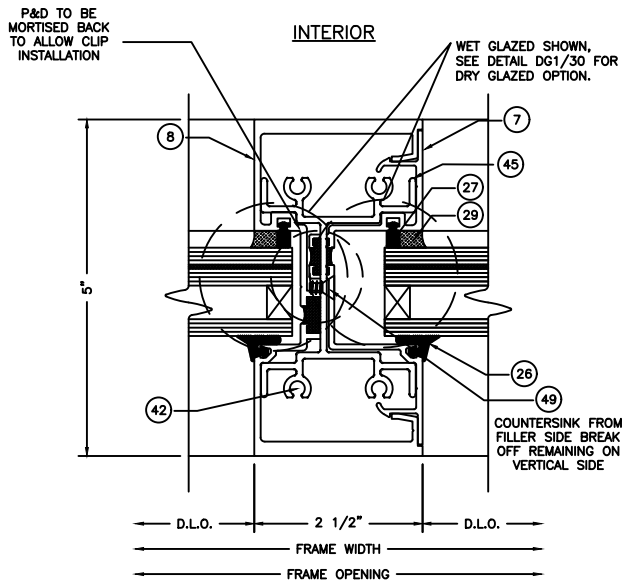
26 INSIDE SET CRIPPLED VERTICAL
34



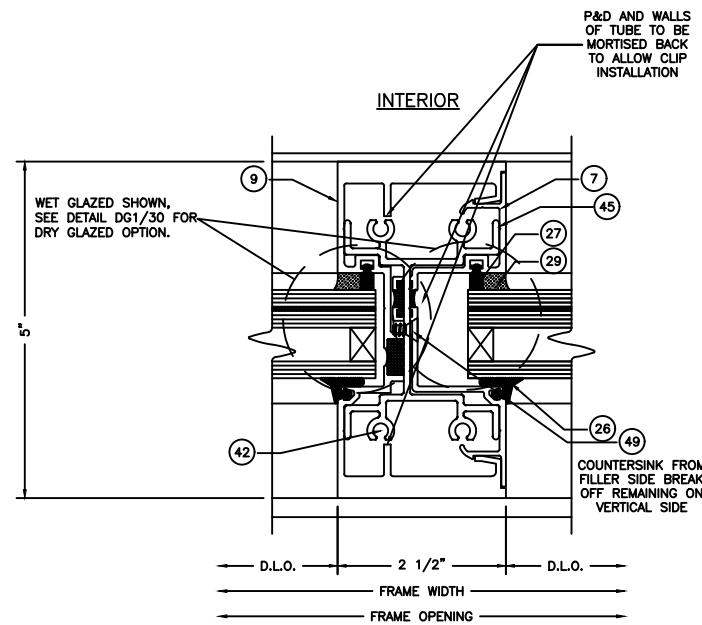
27 INSIDE SET CRIPPLED HEAVY VERTICAL
34



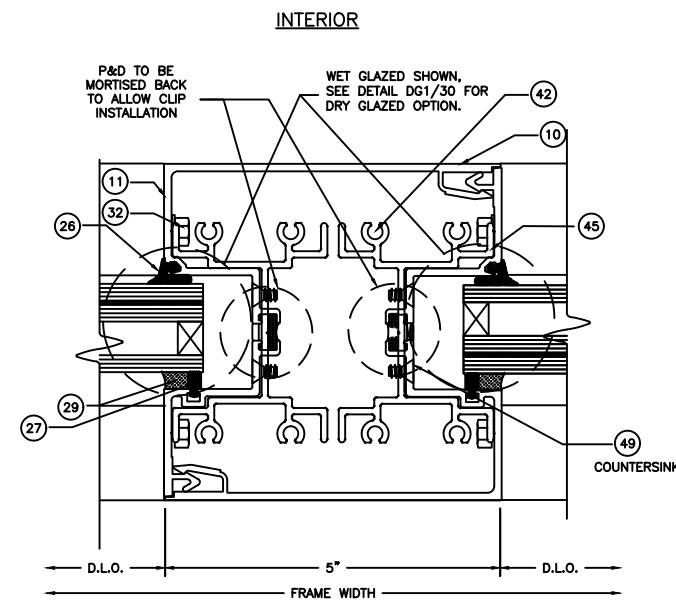
28 INSIDE SET CRIPPLED 5" VERTICAL MULLION
34



29 CRIPPLED VERTICAL
34



30 CRIPPLED HEAVY VERTICAL
34



31 CRIPPLED 5" VERTICAL MULLION
34

SHEAR BLOCKS USE FOUR
(4) 42 FASTENERS EACH.

NOTE:
CRIPPLED VERTICAL MULLIONS SHOWN
HEREIN CAN BE USED UNDER SITE SPECIFIC
ENGINEERING AND SHALL BE APPROVED BY
THE AUTHORITY HAVING JURISDICTION (AHJ).

FL#20665.3

ENGINEERING EXPRESS
POSTAL ADDRESS:
401 W. ATLANTIC AVE R10 #219
DELRAY BEACH, FL 33444
ENGINEERINGEXPRESS.COM

OLDCASTLE BUILDING ENVELOPE

803 AIRPORT ROAD
TERRELL, TX 75160
(972) 551-6100

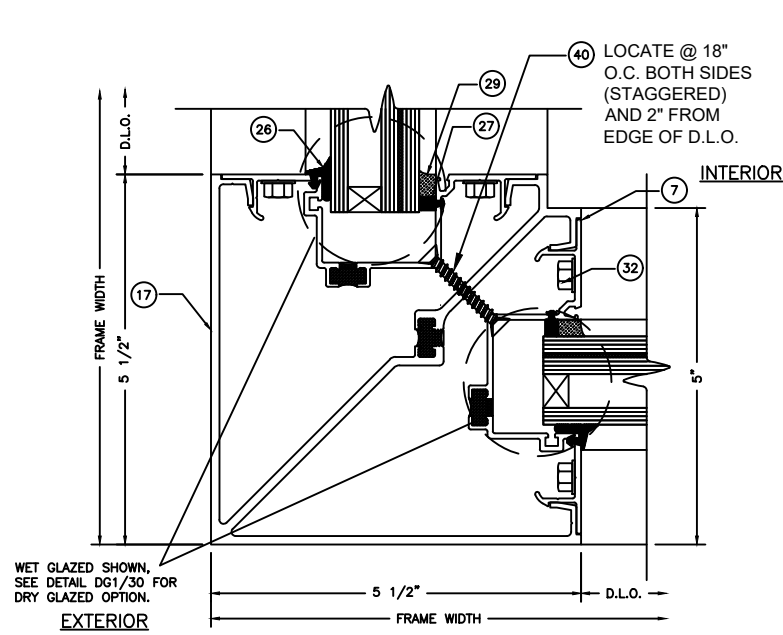
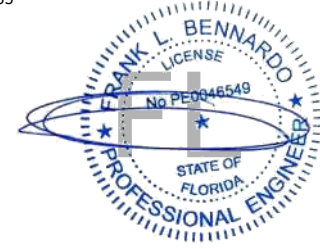
FG-5750 STOREMAX THERMAL
IMPACT STOREFRONT SYSTEM
WET & DRY GLAZED

REMARKS	DRWN	CHKD	DATE
INIT. ISSUE	JEM	AJP	07/23/20
REVISIONS	SSO	RS	03/11/22

COPYRIGHT ENGINEERING EXPRESS®

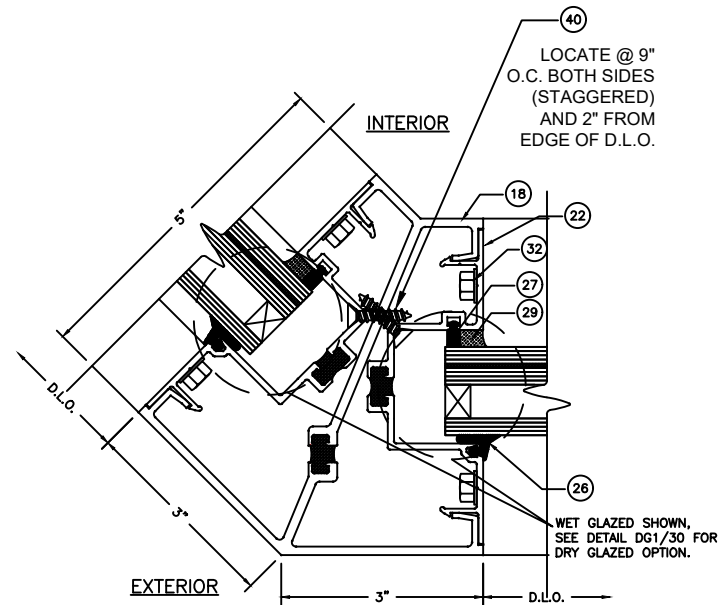
20-29229g

SCALE: NTS UNLESS NOTED



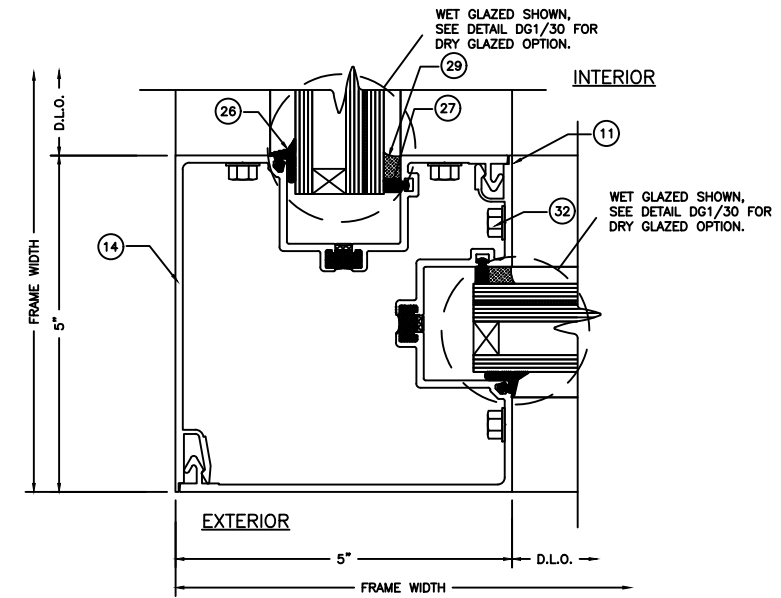
32 90° CORNER POST

35 M5
NOTE: APPROVED FOR USE OUTSIDE HVHZ



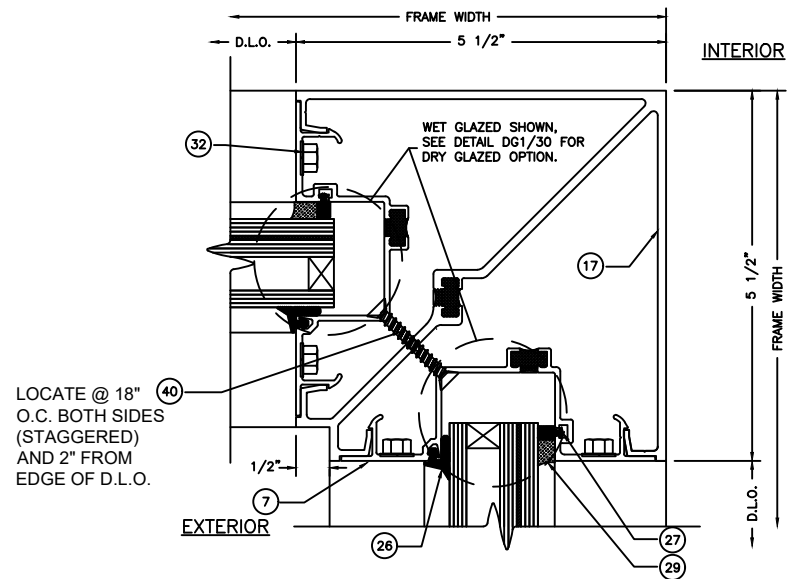
33 135° CORNER POST

35 M6
NOTE: APPROVED FOR USE OUTSIDE HVHZ



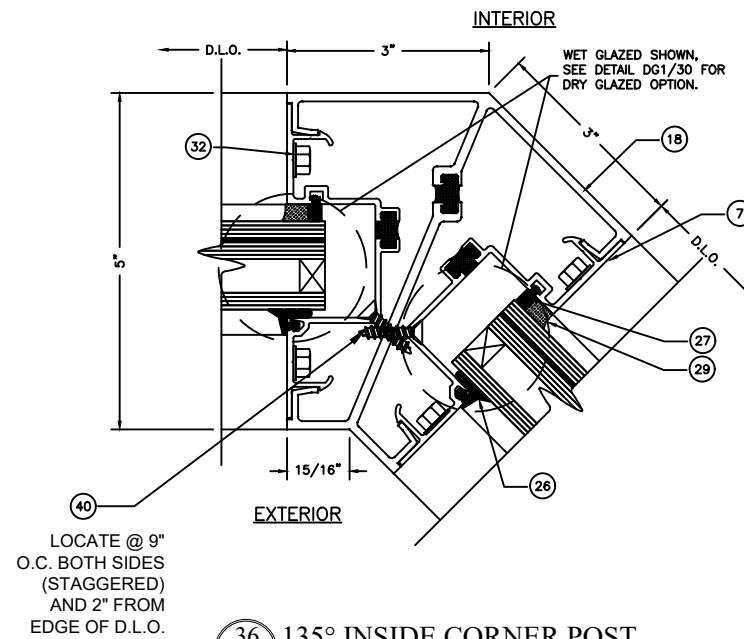
34 90° CORNER POST

35 NOTE:
MULLION CAN BE USED UNDER SITE SPECIFIC ENGINEERING AND SHALL BE APPROVED BY THE AUTHORITY HAVING JURISDICTION (AHJ).



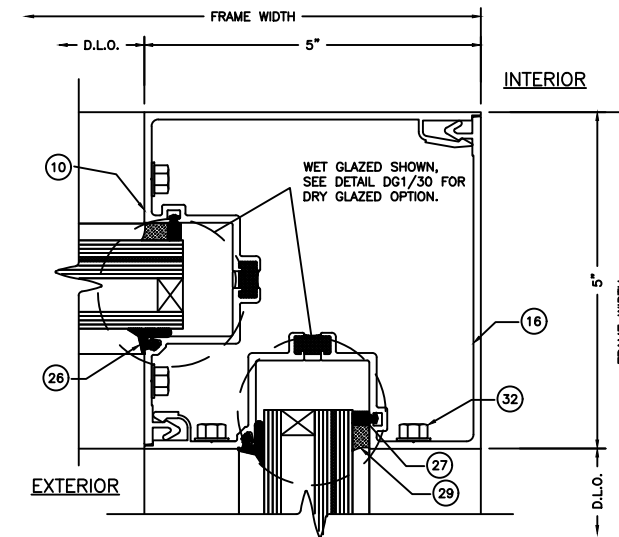
35 90° INSIDE CORNER POST

35 M5
NOTE: APPROVED FOR USE OUTSIDE HVHZ



36 135° INSIDE CORNER POST

35 M6
NOTE: APPROVED FOR USE OUTSIDE HVHZ



37 INSIDE 90° CORNER ASSEMBLY

35 NOTE:
MULLION CAN BE USED UNDER SITE SPECIFIC ENGINEERING AND SHALL BE APPROVED BY THE AUTHORITY HAVING JURISDICTION (AHJ).

FL#20665.3

ENGINEERING EXPRESS
POSTAL ADDRESS:
401 W. ATLANTIC AVE R10 #219
DELRAY BEACH, FL 33444
ENGINEERINGEXPRESS.COM

OLDCASTLE BUILDING ENVELOPE

803 AIRPORT ROAD
TERRELL, TX 75160
(972) 551-6100

FG-5750 STOREMAX THERMAL
IMPACT STOREFRONT SYSTEM
WET & DRY GLAZED

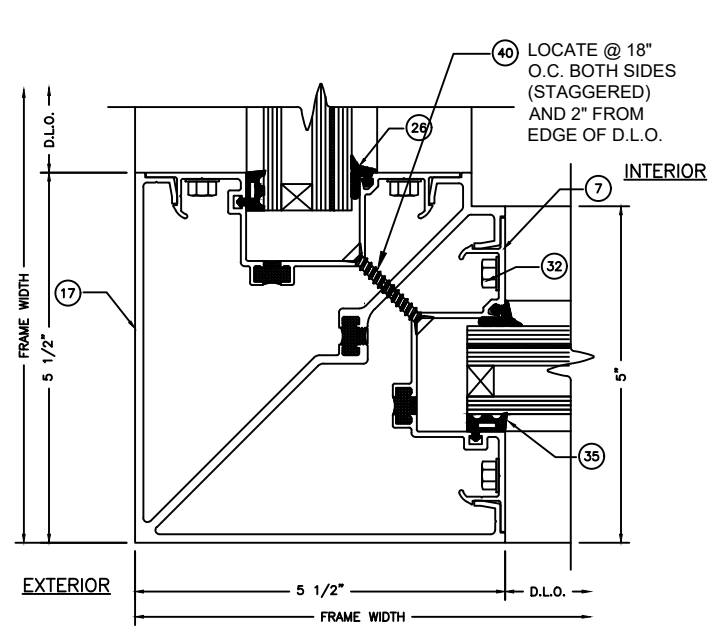
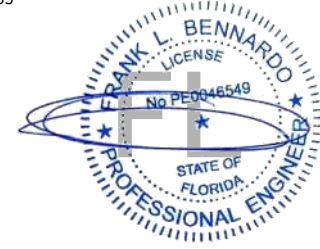
REMARKS	DRWN	CHKD	DATE
INIT ISSUE	JEM	AJP	07/23/20
REVISIONS	SSG	RS	03/11/22

COPYRIGHT ENGINEERING EXPRESS®

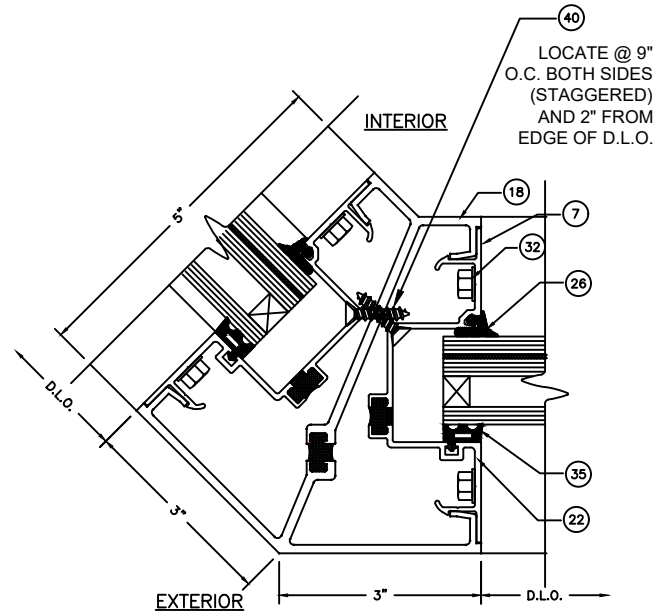
20-29229g

SCALE: NTS UNLESS NOTED

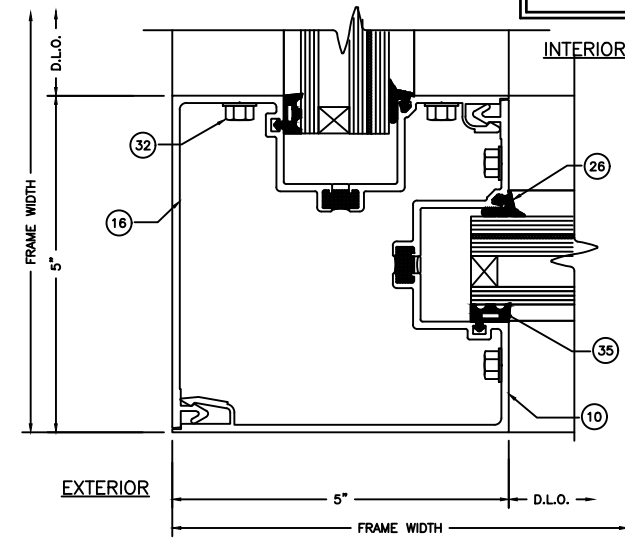
c:\users\sam\engineering\express\production - documents\projects\20-29229 oldcastle - fg 5000 & fg 5100\revision order 8879\work\drawings & cad\fg-5750\20-29229g obe - fg-5750\fg 8-24-22.dwg 8/31/2022 2:18 PM SAM



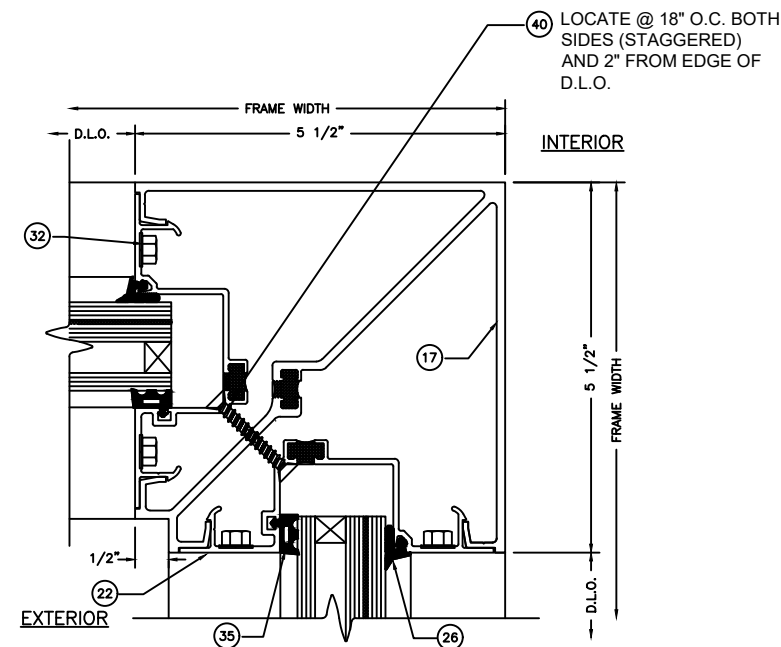
38 INSIDE SET 90° CORNER POST
36 M5
NOTE: APPROVED FOR USE OUTSIDE HVHZ



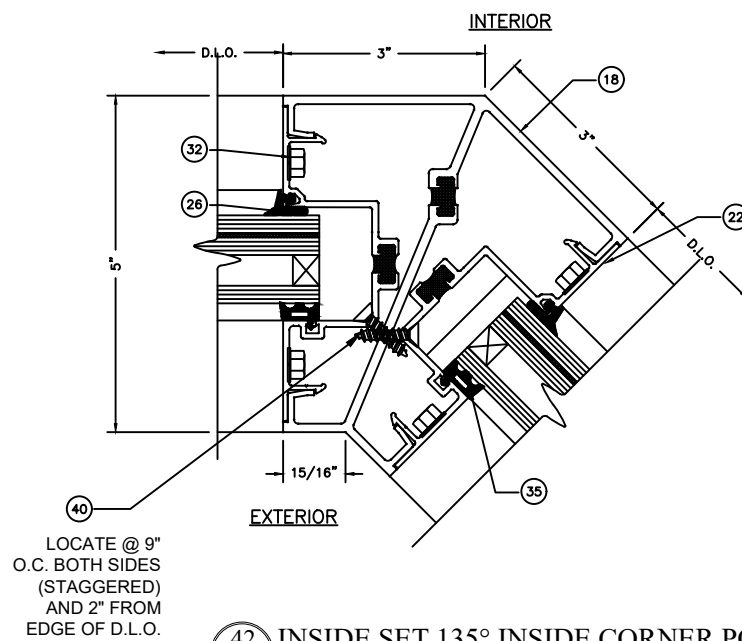
39 INSIDE SET 135° CORNER POST
36 M6
NOTE: APPROVED FOR USE OUTSIDE HVHZ



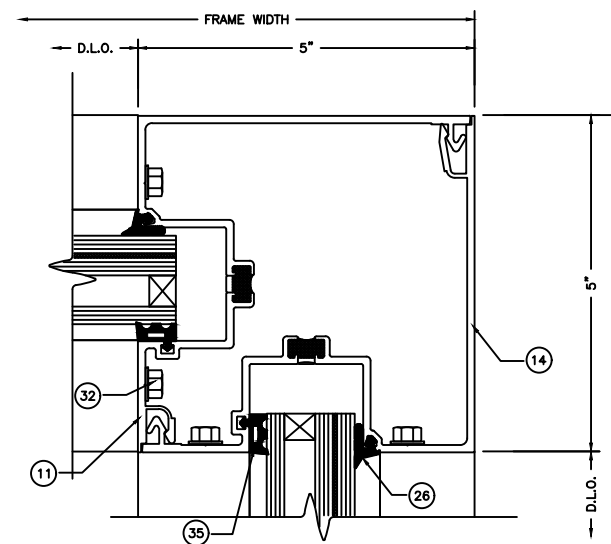
40 INSIDE SET 90° CORNER POST
36 M6
NOTE: MULLION CAN BE USED UNDER SITE SPECIFIC ENGINEERING AND SHALL BE APPROVED BY THE AUTHORITY HAVING JURISDICTION (AHJ).



41 INSIDE SET 90° INSIDE CORNER POST
36 M5
NOTE: APPROVED FOR USE OUTSIDE HVHZ



42 INSIDE SET 135° INSIDE CORNER POST
36 M6
NOTE: APPROVED FOR USE OUTSIDE HVHZ



43 INSIDE SET INSIDE 90° CORNER ASSEMBLY
36 M6
NOTE: MULLION CAN BE USED UNDER SITE SPECIFIC ENGINEERING AND SHALL BE APPROVED BY THE AUTHORITY HAVING JURISDICTION (AHJ).

FL#20665.3

ENGINEERING EXPRESS
POSTAL ADDRESS:
401 W. ATLANTIC AVE R10 #219
DELRAY BEACH, FL 33444
ENGINEERINGEXPRESS.COM

OLDCASTLE BUILDING ENVELOPE
803 AIRPORT ROAD
TERRELL, TX 75160
(972) 551-6100

FG-5750 STOREMAX THERMAL
IMPACT STOREFRONT SYSTEM
WET & DRY GLAZED

REMARKS	DRWN	CHKD	DATE
INIT. ISSUE	JEM	AJP	07/23/20
REVISIONS	SSO	RS	03/11/22

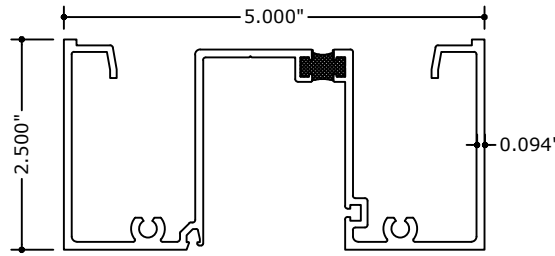
COPYRIGHT ENGINEERING EXPRESS®

20-29229g

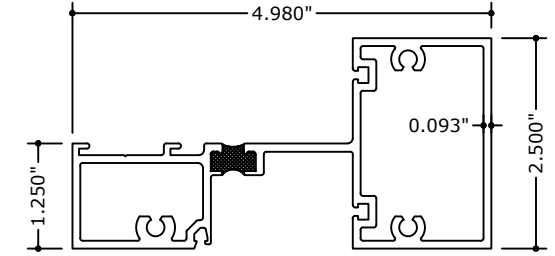
SCALE: NTS UNLESS NOTED

c:\users\sam\engineering\express\production - documents\projects\20-29229 oldcastle - fg 5000 & fg 5100\revision order 8879\work\drawings & cad\fg-5750\20-29229g obe - fg-5750\fg-8-24-22.dwg 8/31/2022 2:18 PM SAM

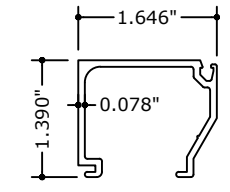
c:\users\sam\engineering\express\production - documents\projects\20-29229 oldcastle - fg 5000 & fg 5100\revision order 8879\work\drawings & cad\fg-5750\20-29229g obe - fg-5750tg 8-24-22.dwg



① FGT-5770
HEAD/SILL/JAMB



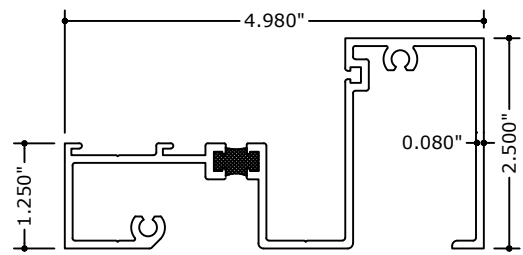
② FGT-5772
HORIZONTAL



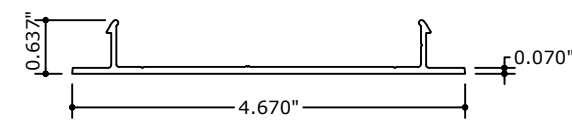
③ FG-5760
GLASS STOP

Frank Bennardo
PE# 0046549 CA# 9885

AUGUST 31, 2022

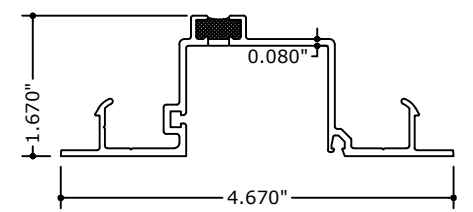


④ FGT-5771
SILL/HEAD

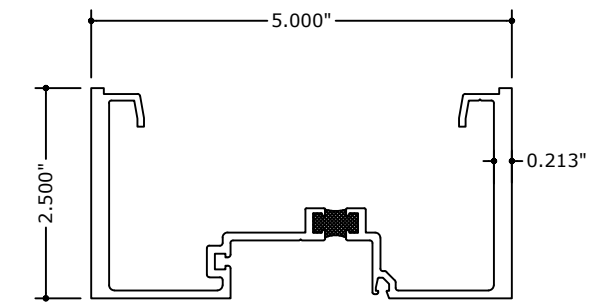


⑥ FG-5715
FLAT FILLER

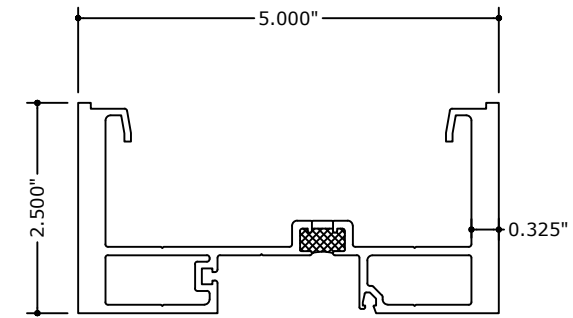
⑤ FG-5719
PVC FLAT FILLER



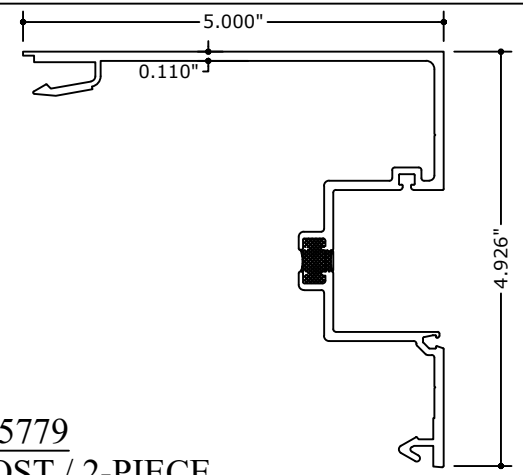
⑦ FGT-5780
SNAP-IN FILLER



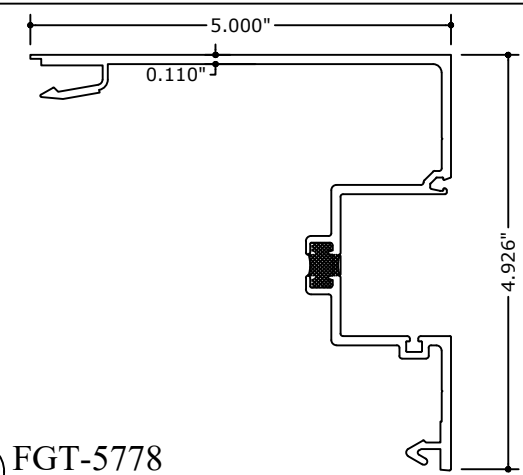
⑧ FGT-5773
STANDARD VERTICAL



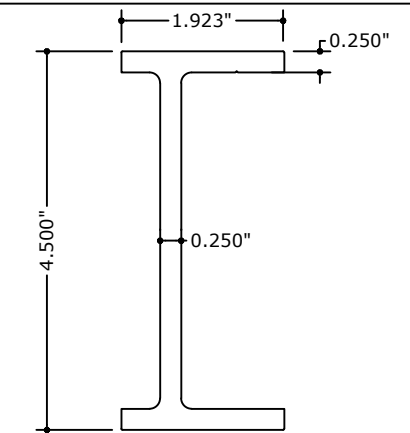
⑨ FGT-5774
HEAVY VERTICAL MULLION



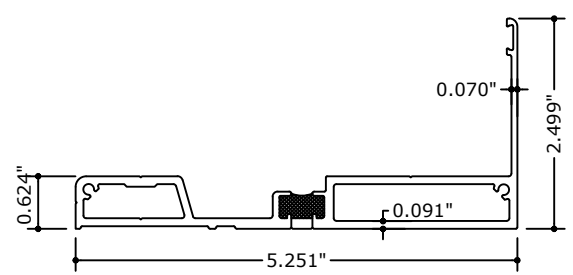
⑩ FGT-5779
5" POST / 2-PIECE
CORNER POST



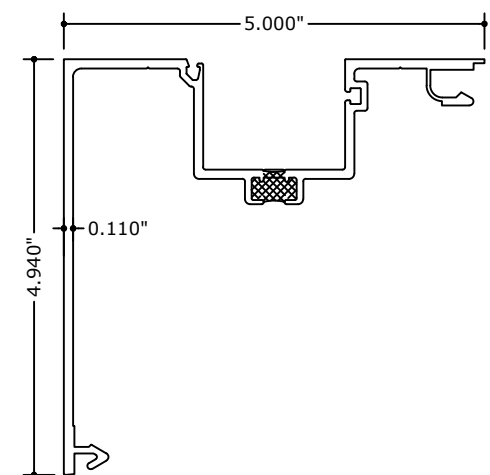
⑪ FGT-5778
5" VERTICAL POST



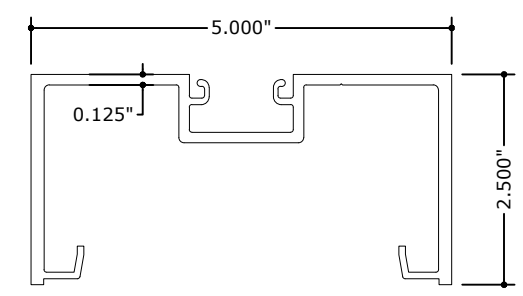
⑫ FG-5720
ALUMINUM STIFFENER



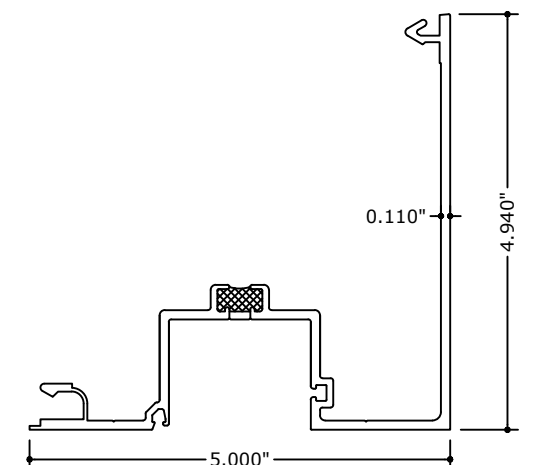
⑬ FGT-5712
5/8" SUBSILL



⑭ FGT-5784 5" POST /
2-PIECE CORNER POST



⑮ FG-5713
VERTICAL DOOR
MULLION W/ SIDELITE



⑯ FGT-5785 5" POST /
2-PIECE CORNER POST

FL#20665.3

**ENGINEERING
EXPRESS**
POSTAL ADDRESS:
401 W. ATLANTIC AVE R10 #219
DELRAY BEACH, FL 33444
ENGINEERINGEXPRESS.COM

OLDCASTLE BUILDING ENVELOPE
803 AIRPORT ROAD
TERRELL, TX 75160
(972) 551-6100

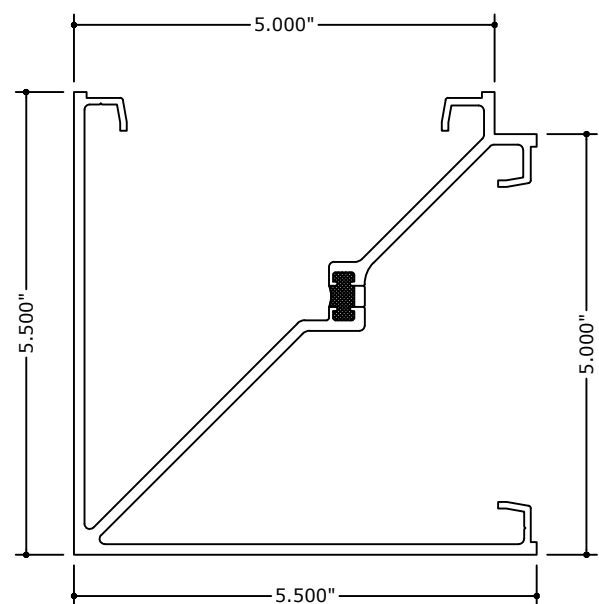
FG-5750 STOREMAX THERMAL
IMPACT STOREFRONT SYSTEM
WET & DRY GLAZED

REMARKS	DATE
INIT. ISSUE	07/23/20
REVISIONS	03/11/22

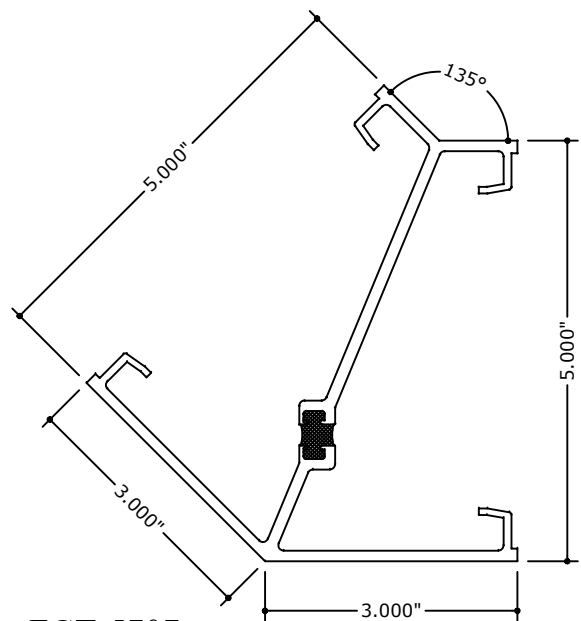
COPYRIGHT ENGINEERING EXPRESS®
20-29229g
SCALE: NTS UNLESS NOTED

37 OF 41

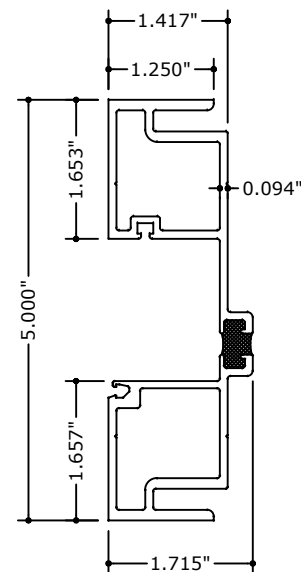
c:\users\sam\engineering\express\production - documents\projects\20-29229 oldcastle - fg 5000 & fg 5100\revision order 8879\work\drawings & cad\fg-5750\20-29229g obe - fg-5750\fg-8-24-22.dwg



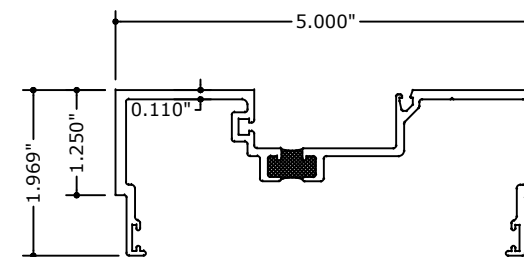
①7 FGT-5706
90 DEGREE CORNER POST



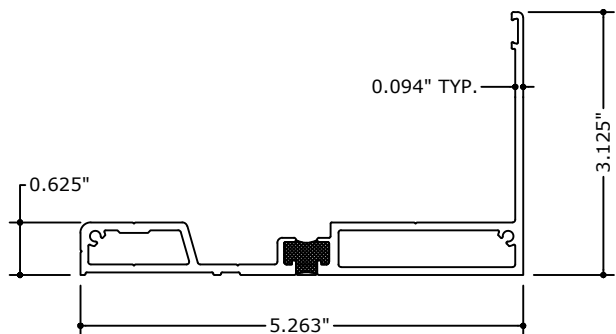
①8 FGT-5707
135 DEGREE CORNER POST



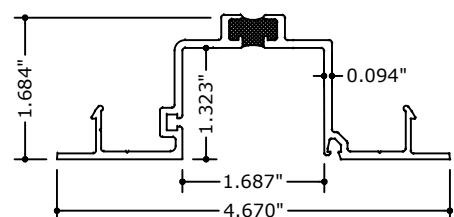
①9 FGT-5782
EXPANSION MULLION (FEMALE)



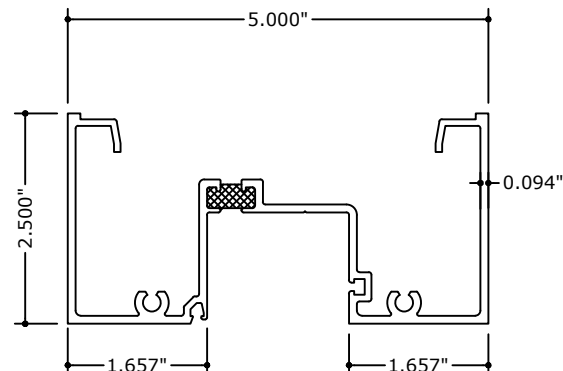
②0 FGT-5783
EXPANSION MULLION (MALE)



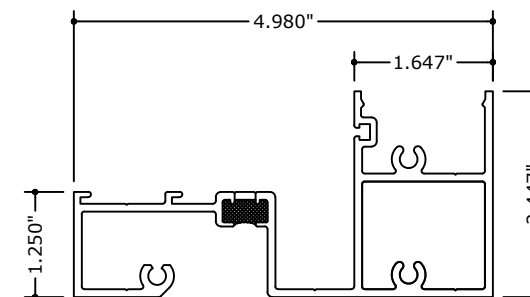
②1 FGT-5726
5/8" SUBSILL



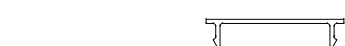
②2 FGT-5781
DEEP POCKET FILLER



②3 FGT-5786
PRE-GLAZED HEAD



②4 FGT-5787
PRE-GLAZED SILL



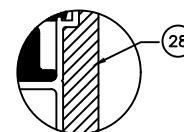
②5 FG-5259
PRE-GLAZED SILL FILLER



②6 FG-5730
EXTERIOR GLAZING GASKET



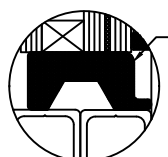
②7 FG-5731
SPACER GASKET



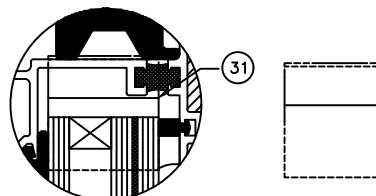
②8 SM5601
JOINT TAPE



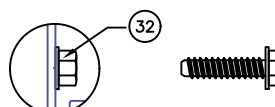
②9 DOWSIL 995
SEALANT



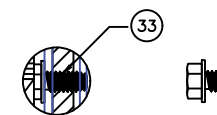
③0 FG-5743
SETTING BLOCK



③1 FG-5790-02
WATER DIVERTER



③2 FS-8
JOINT FASTENER



③3 FS-354
REINFORCEMENT FASTENER

Frank Bennardo
PE# 0046549 CA# 9885
AUGUST 31, 2022

FL#20665.3

POSTAL ADDRESS:
401 W. ATLANTIC AVE R10 #219
DELRAY BEACH, FL 33444
ENGINEERINGEXPRESS.COM

OLDCASTLE BUILDING ENVELOPE®
803 AIRPORT ROAD
TERRELL, TX 75160
(972) 551-6100

FG-5750 STOREMAX™ THERMAL
IMPACT STOREFRONT SYSTEM
WET & DRY GLAZED

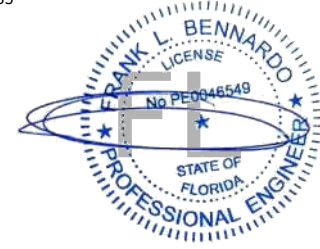
REMARKS	DRWN	CHKD	DATE
INIT. ISSUE	JEM	AJP	07/23/20
REVISIONS	SSG	RS	03/11/22

COPYRIGHT ENGINEERING EXPRESS®

20-29229g

SCALE: NTS UNLESS NOTED

38 OF 41



BILL OF MATERIALS

ITEM NO.	P/N	DESCRIPTION	DIMENSIONS	MATERIAL	MANUFACTURER	NOTES
ALUMINUM PARTS						
1	FGT-5770	HEAD/SILL/JAMB	2.500 x 5.000 x 0.094	6063-T6 ALUMINUM	OBE	
2	FGT-5772	HORIZONTAL MULLION	2.500 x 4.980 x 0.094	6063-T6 ALUMINUM	OBE	
3	FG-5760	GLASS STOP	1.250 x 1.650 x 0.078	6063-T6 ALUMINUM	OBE	
4	FGT-5771	HEAD/SILL	2.500 x 4.980 x 0.094	6063-T6 ALUMINUM	OBE	
5	FG-5719	PVC FLAT FILLER	0.636 x 4.670 x 0.080	PVC	OBE	
6	FG-5715	FLAT FILLER	0.636 x 4.670 x 0.080	6063-T6 ALUMINUM	OBE	RUNS FULL LENGTH
7	FGT-5780	SNAP-IN FILLER	0.681 x 4.670 x 0.080	6063-T6 ALUMINUM	OBE	
8	FGT-5773	VERTICAL MULLION	2.500 x 5.000 x 0.094	6063-T6 ALUMINUM	OBE	
9	FGT-5774	HEAVY MULLION	2.500 x 5.000 x 0.213	6063-T6 ALUMINUM	OBE	
10	FGT-5779	5" VERTICAL POST	5.000 x 4.941 x 0.110	6063-T6 ALUMINUM	OBE	
11	FGT-5778	5" VERTICAL POST	4.941 x 5.000 x 0.110	6063-T6 ALUMINUM	OBE	
12	FG-5720	ALUMINUM STIFFENER	4.500 x 1.9375 x 0.250	6063-T6 ALUMINUM	OBE	MAXIMUM LENGTH OF 144"
13	FGT-5712	5/8" SUBSILL	5.276 x 2.750 x 0.100	6063-T6 ALUMINUM	OBE	
14	FGT-5784	5" CORNER POST	5.000 x 4.940 x 0.110	6063-T6 ALUMINUM	OBE	
15	FG-5713	VERTICAL DOOR MULLION W/ SIDELITE	2.500 x 5.000 x 0.125	6063-T6 ALUMINUM	OBE	
16	FGT-5785	5" CORNER POST	5.000 x 4.940 x 0.110	6063-T6 ALUMINUM	OBE	
17	FGT-5706	90° CORNER MULLION	5.500 X 5.500 X 0.125	6063-T6 ALUMINUM	OBE	
18	FGT-5707	135° CORNER MULLION	3.000 x 5.000 x 0.125	6063-T6 ALUMINUM	OBE	
19	FGT-5782	EXPANSION MULLION (FEMALE)	1.715 x 5.000 x 0.094	6063-T6 ALUMINUM	OBE	
20	FGT-5783	EXPANSION MULLION (MALE)	1.969 x 5.000 x 0.110	6063-T6 ALUMINUM	OBE	
21	FGT-5726	5/8" SUBSILL	5.263 x 3.125 x 0.940	6063-T6 ALUMINUM	OBE	
22	FGT-5781	DEEP POCKET FILLER	0.681 x 4.670 x 0.080	6063-T6 ALUMINUM	OBE	
23	FGT-5786	PRE-GLAZE HEAD	2.500 X 5.000 X 0.094	6063-T6 ALUMINUM	OBE	
24	FGT-5787	PRE-GLAZE SILL	2.446 X 5.000 X 0.094	6063-T6 ALUMINUM	OBE	
25	FG-5259	PRE-GLAZE SILL FILLER	.344 X 1.638 X 0.050	6063-T5 ALUMINUM	OBE	

FL#20665.3

ENGINEERING EXPRESS
 POSTAL ADDRESS:
 401 W. ATLANTIC AVE R10 #219
 DELRAY BEACH, FL 33444
 ENGINEERINGEXPRESS.COM

OLDCASTLE BUILDING ENVELOPE
 803 AIRPORT ROAD
 TERRELL, TX 75160
 (972) 551-6100
 FG-5750 STOREMAX THERMAL
 IMPACT STOREFRONT SYSTEM
 WET & DRY GLAZED

REMARKS	DRWN	CHKD	DATE
INIT. ISSUE	JEM	AJP	07/23/20
REVISIONS	SSG	RS	03/11/22

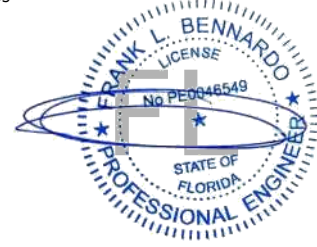
COPYRIGHT ENGINEERING EXPRESS®

20-29229g

SCALE: NTS UNLESS NOTED

40 OF 41

c:\users\sam\engineering\express\production - documents\projects\20-29229 oldcastle - fg 5000 & fg 5100\revision order 8879\work\drawings & cad\fg-5750\20-29229g obe - fg-5750tg 8-24-22.dwg



BILL OF MATERIALS

ITEM NO.	P/N	DESCRIPTION	DIMENSIONS	MATERIAL	MANUFACTURER	NOTES
ACCESSORY PARTS						
26	FG-5730	EXTERIOR GLAZING GASKET	0.120 SPACE	EPDM	VARIES	
27	FG-5731	SPACER GASKET	0.250 SPACE	SILICONE	VARIES	
28	SM5601	JOINT SEALANT TAPE	0.500 x 0.125 x VARIES	POLYISOBUTYLENE	SCHNEE-MOOREHEAD	
29	DOWSIL 995	STRUCTURAL SEALANT	--	SILICONE	DOW CHEMICAL COMPANY	FOR WET GLAZING AND FRAME ASSEMBLY
30	FG-5743	SETTING BLOCK	1.468 x 0.688 x 4.000	SILICONE	VARIES	2 PER LITE
31	FG-5790-02	WATER DIVERTER	1.358 x 1.312 x 0.050	INJECTION MOLDED PLASTIC	OBE	AT EACH END OF INTERMEDIATE HORIZONTALS
32	FS-8	FASTENER	#14 x 1" HHSTS	STEEL (DACROMET)	VARIES	SCREW SPLINE SCREW, ALUMINUM REINFORCEMENT SCREW
33	FS-354	FASTENER	#1/4-20 x 3/8" HEXHEAD TYPE F	STEEL (GEOMET)	VARIES	REINFORCEMENT SCREW, 1-1/4" FROM EACH END
34	AN-104-01	SILL FLASHING END DAM	3.250 x 0.687 x 0.700	6063-T6 ALUMINUM	OBE	
35	FG-5732	DRY GLAZE GASKET	0.250 SPACE	EPDM	VARIES	
36	DOWSIL 795	PERIMETER SEALANT	--	SILICONE	DOW CHEMICAL COMPANY	
37	AN-101-01	SILL FLASHING END DAM	2.688 x 0.625 x 0.063 x 5.125	6063-T6 ALUMINUM	OBE	FOR USE WITH FGT-5712 SUBSILL
38	FS-23	FASTENER	#6 x 3/8" PPH	STEEL (ZINC PLATED)	VARIES	ATTACH END DAM TO SUBSILL
39	FG5000-PP-8	STEEL REINF. AT DOOR JAMB	4.560 x 1.250 x 0.250	STEEL (ZINC PLATED)	VARIES	USED AT DOOR JAMBS
40	FS-58	FASTENER	#10 x 1" PHILLIPS FLAT HEAD	STAINLESS STEEL	VARIES	USED AT CORNERS
41	CH55	U-CHANNEL	1.000 x 1.593 x 0.125"	6063-T6 ALUMINUM	OBE	
42	FS-96	FASTENER	#12 x 2-1/2" PPH SMS A pt	STEEL (GEOMET)	VARIES	SHEAR BLOCK SCREW
43	FG-5763	SETTING BLOCK	0.579 x 0.250 x 1.500	SILICONE	VARIES	
44	FG-5721-01	SETTING CHAIR	1.156 x 0.844 x 0.078	6063-T6 ALUMINUM	OBE	2 PER LITE, 4" LONG
45	FG-5714-01	SHEAR BLOCK	2.300 x 3.261 x 0.094	6063-T6 ALUMINUM	OBE	2" IN LENGTH
46	FG-5723-01	SETTING CHAIR	1.031 x 1.691 x 0.078	6063-T6 ALUMINUM	OBE	2 PER LITE, 4" LONG
47	FS-128	FASTENER	5/16"x24x 2" HEX WASHER HEAD	STEEL (DACROMET)	VARIES	(2) FASTENERS PER SIDE (1 1/2" AND 4 1/2" ON EACH SIDE OF MULLION)
48	FGT-5788-01	PRE-GLAZE HEAD ANCHOR	1.679 x 0.588 x 4.000	6063-T6 ALUMINUM	OBE	
49	FS-56	FASTENER	#10 X 1/2" UCPFH SMS	STAINLESS STEEL	VARIES	
50	CW-998	BULB GASKET		FOAM-TITE BULB	AMESBURY	
51	FS-27	FASTENER (SILL-TO-SUBSILL)	#12 x 1/2" PPH SMS A pt	STEEL (DRACOMET)	VARIES	(4) FASTENERS PER SIDE (2" FROM MULLION & 2" O.C.)
52	FS-336	FASTENER	1/4-20 x 1-1/8" HWH KWIKFLEX		HILTI	(2) FASTENERS PER SIDE (1 1/2" AND 4 1/2" ON EACH SIDE OF MULLION)

FL#20665.3



POSTAL ADDRESS:
401 W. ATLANTIC AVE R10 #219
DELRAY BEACH, FL 33444
ENGINEERINGEXPRESS.COM

OLDCASTLE BUILDING ENVELOPE

803 AIRPORT ROAD
TERRELL, TX 75160
(972) 551-6100

FG-5750 STOREMAX THERMAL
IMPACT STOREFRONT SYSTEM
WET & DRY GLAZED

REVISIONS	DATE	BY	CHKD
	07/23/20	JEM	AJP
	03/11/22	SSG	RS

COPYRIGHT ENGINEERING EXPRESS

20-29229g

SCALE: NTS UNLESS NOTED

41

OF 41

c: users\sam\engineering\express\production - documents\projects\20-29229\oldcastle - fg 5000 & fg 5100\revision order 8879\work\drawings & cad\fg-5750\20-29229g obe - fg-5750tg 8-24-22.dwg