

DSA Master Crafted Doors

7/0 x 8/0 Double Full Lite/2 Panels

INSTALLATION ANCHORAGE DETAILS

GENERAL NOTES:

1. THIS PRODUCT IS DESIGNED TO COMPLY WITH THE 5TH EDITION (2014) FLORIDA BUILDING CODE - BUILDING AND RESIDENTIAL REQUIREMENTS EXCLUDING THE HIGH VELOCITY HURRICANE ZONE (HVHZ) AT THE DESIGN PRESSURE(S) STATED HEREIN. THE PRODUCT DETAILS CONTAINED HEREIN ARE BASED UPON SIGNED AND SEALED TEST REPORT NO. ATLNC 0924.01-13 DATED 10/28/13 AND ASSOCIATED LABORATORY STAMPED DRAWINGS. TESTING WAS PERFORMED TO THE FOLLOWING:
- 1.1. ASTM E330-02
1.2. ASTM E283-04
1.3. ASTM E1886-05
1.4. ASTM E1996-09
2. ADEQUACY OF THE EXISTING STRUCTURAL CONCRETE / MASONRY AND 2X FRAMING AS A MAIN WIND FORCE RESISTING SYSTEM CAPABLE OF WITHSTANDING AND TRANSFERRING APPLIED PRODUCT LOADS TO THE STRUCTURE IS THE RESPONSIBILITY OF THE ARCHITECT OR ENGINEER OF RECORD.
3. 1X AND 2X BUCKS (WHEN USED) SHALL BE DESIGNED AND ANCHORED TO PROPERLY TRANSFER ALL LOADS TO THE STRUCTURE. BUCK DESIGN AND INSTALLATION IS THE RESPONSIBILITY OF THE ARCHITECT OR ENGINEER OF RECORD.
4. IN AREAS WHERE WIND-BORNE DEBRIS PROTECTION REQUIREMENTS EXIST, USE OF AN APPROVED IMPACT PROTECTIVE SYSTEM IS NOT REQUIRED WITH THIS PRODUCT.
5. DOOR FRAME AND PANEL MATERIAL: MAHOGANY
6. GLAZING:
- 6.1. 1" OVERALL THICKNESS: 5/32" TEMPERED, AIR SPACE (XL EDGE SPACER), 5/16" LAMINATED (1/8" ANNEALED/ KURARAY BUTACITE .090 PVB INTERLAYER/ 1/8" ANNEALED) BY CARDINAL GLASS INDUSTRIES INC. GLAZED USING DOW 995 STRUCTURAL ADHESIVE GRADE SEALANT.
- 6.2. GLASS MEETS THE REQUIREMENTS OF ASTM E1300-04e01.
7. SITE CONDITIONS THAT DEVIATE FROM THE DETAILS OF THIS DRAWING REQUIRE FURTHER ENGINEERING EVALUATION BY A LICENSED ENGINEER OR REGISTERED ARCHITECT.
8. DESIGNATIONS "X" AND "O" (WHERE APPLICABLE) STAND FOR THE FOLLOWING:
- 8.1. X: OPERABLE PANEL
8.2. O: FIXED PANEL
9. HARDWARE (AS-TESTED; SUBSTITUTIONS ALLOWED PER FBC REQUIREMENTS):
- 9.1. MULTI-POINT LOCK AND HANDLES BY ASHLAND HARDWARE.
9.2. HINGES: (8) STEEL 4-1/2" X 4-1/2" BALL BEARING HINGES BY CAL ROYAL.

TABLE OF CONTENTS	
SHEET	DESCRIPTION
1	NOTES - GENERAL & INSTALLATION
2	ELEVATION
3	ELEVATION - ANCHOR LAYOUT
4	ELEVATIONS - HINGES & BRICK MOULD
5	DETAILS 1 THRU 5
6	DETAILS 6 THRU 10
7	DOOR SECTIONS - HORIZONTAL
8	DOOR SECTIONS - HORIZONTAL
9	APPROVED CONFIGURATIONS
10	APPROVED CONFIGURATIONS

INSTALLATION NOTES:

1. SEE ELEVATION (SHEET 3), SECTION VIEWS (SHEETS 7 AND 8) AND DETAILS (SHEETS 5 AND 6) FOR INSTALLATION ANCHOR TYPE, LOCATION, QUANTITY AND PLACEMENT IN 2X WOOD FRAMING OR 2X WOOD BUCKING. FOR INSTALLATION ANCHORS IN CONCRETE AND MASONRY CONSTRUCTION, SEE NOTE 2 BELOW.
2. INSTALLATIONS DETAILS DEPICTED IN THIS PRODUCT APPROVAL DOCUMENT USE WOOD SCREWS EMBEDDED INTO SUPPORTING SUBSTRATE THAT IS EITHER 2X WOOD FRAMING OR 2X WOOD BUCKING STRUCTURALLY ATTACHED TO CONCRETE/MASONRY SUBSTRATE. WHERE INSTALLATION ANCHORS ARE EMBEDDED INTO CONCRETE/MASONRY EITHER WITH/WITHOUT 1X WOOD BUCKING, CONCRETE SCREWS SHALL BE USED. THE FOLLOWING TYPES OF INSTALLATION FASTENERS SHALL BE EMPLOYED BASED ON THE SUPPORTING SUBSTRATE AS FOLLOWS.
- 2.1. 2X WOOD FRAMING OR BUCKING AT HEAD, SILLS OR JAMBS
- 2.1.1. INSTALLATION DETAILS SHOWN ON SHEETS 3 THROUGH 7 DEPICT INSTALLATION REQUIREMENTS USING NO. 12 WOOD SCREWS.
- 2.1.2. SEE NOTE 3 BELOW FOR SCREWS SPECIFICATIONS, MINIMUM EMBEDMENT, SPACING AND EDGE DISTANCES.
- 2.2. CONCRETE OR MASONRY AT HEAD, SILLS OR JAMBS (OPTIONAL 1X WOOD BUCK ALLOWED)
- 2.2.1. 1/4" DIAMETER ELCO ULTRACON CONCRETE SCREWS SHALL BE USED IN LIEU OF NO. 12 WOOD SCREWS IN ALL LOCATIONS WHERE SUPPORTING SUBSTRATE IS CONCRETE OR MASONRY EXCEPT AS NOTED IN NOTE 2.2.2 BELOW.
- 2.2.2. 3/16" DIAMETER ELCO ULTRACON CONCRETE SCREWS SHALL BE USED IN LIEU OF NO. 12 WOOD SCREWS IN ALL LOCATIONS WHERE SUPPORTING SUBSTRATE IS CONCRETE OR MASONRY IN THE FOLLOWING INSTANCES.
- 2.2.2.1. DETAIL 1, SHEET 5 - TOP STRIKE PLATE.
- 2.2.2.2. DETAIL 2, SHEET 5 - BOTTOM STRIKE PLATE.
- 2.2.2.3. DETAIL 3, SHEET 5 - THRESHOLD SECTION.
- 2.2.2.4. DETAIL 4, SHEET 5 - CLOSED HINGE (APPLICABLE TO #12 X 3-1/2" WS LOCATION ONLY).
- 2.2.2.4. DETAIL 5, SHEET 5 - OPEN HINGE (APPLICABLE TO #12 X 3-1/2" WS LOCATION ONLY).
- 2.2.2.5. DETAIL 6, SHEET 6 - JAMB ANCHORAGE AT HINGE (APPLICABLE TO #12 X 3-1/2" WS LOCATION ONLY).
3. INSTALLATION SCREW (ANCHORAGE) SPECIFICATION
- 3.1. NO. 12 WOOD SCREWS AT THE LENGTHS SHOWN IN THE INSTALLATION DETAILS.
- 3.1.1. WOOD SCREWS SHALL MEET ANSI B18.6.1 AND BE A MINIMUM GRADE 2 STRENGTH
- 3.1.2. MINIMUM EMBEDMENT IS 1-1/2". WOOD SCREW LENGTHS CAN BE VARIED IF NEEDED AS LONG AS MINIMUM EMBEDMENT IS MAINTAINED. THIS REQUIREMENT APPLICABLE TO SUBSTRATE EMBEDDED SCREWS ONLY.
- 3.1.3. MINIMUM EDGE DISTANCE AND SPACING BETWEEN SCREW IS 7/8".
- 3.2. 1/4" DIAMETER ELCO ULTRACON CONCRETE SCREWS
- 3.2.1. MINIMUM EMBEDMENT IS 1-3/4" IN CONCRETE AND 1-1/4" IN MASONRY (CMU).
- 3.2.2. MINIMUM EDGE DISTANCE IS 2-1/2".
- 3.2.3. MINIMUM SPACING BETWEEN SCREWS IS 1-1/2".
- 3.2. 3/16" DIAMETER ELCO ULTRACON CONCRETE SCREWS
- 3.2.1. MINIMUM EMBEDMENT IS 1-3/4" IN CONCRETE AND 1-1/4" IN MASONRY (CMU).
- 3.2.2. MINIMUM EDGE DISTANCE IS 2-1/2".
- 3.2.3. MINIMUM SPACING BETWEEN SCREWS IS 1-1/8".
4. THE NUMBER OF INSTALLATION ANCHORS DEPICTED IS THE MINIMUM NUMBER OF ANCHORS TO BE USED FOR PRODUCT INSTALLATION AT THE MAXIMUM SIZE SHOWN. SMALLER PRODUCT SIZES CAN HAVE LESS ANCHORS AS LONG AS THE EDGE DISTANCE AND ON CENTER (O.C.) SPACING ARE THE SAME AS OR LESS THAN THAT SHOWN. INSTALLATION ANCHORS AT THE STRIKE PLATES AND HINGES SHALL REMAIN THE SAME.
5. SHIM AS REQUIRED AT EACH INSTALLATION ANCHOR WITH LOAD BEARING SHIM(S). MAXIMUM ALLOWABLE SHIM SIZE IS 1/4 INCH. SHIM WHERE SPACE OF 1/16 INCH OR GREATER OCCURS. SHIM(S) SHALL BE CONSTRUCTED OF HIGH DENSITY PLASTIC OR BETTER. SHIMS MAY NOT BE SHOWN IN THE SECTION VIEWS OF THIS DRAWING FOR CLARITY
6. MINIMUM EMBEDMENT AND EDGE DISTANCE EXCLUDE WALL FINISHES (INCLUDING BUT NOT LIMITED TO STUCCO, FOAM, BRICK VENEER AND SIDING).
7. SINGLE DOOR IS APPROVED AND SHALL BE INSTALLED IN A MANNER IN COMPLIANCE WITH THE REQUIREMENTS OF THIS PRODUCT APPROVAL DOCUMENT.

PERFORMANCE RATING			
DESIGN PRESSURE RATING (PSF)		WATER PENETRATION RATING	IMPACT RATING
MAXIMUM UNIT DIMENSIONS AND GLAZING	UP TO O.A. SIZE SHOWN ON ELEVATION VIEW		
88" X 99-1/8" XX INSWING	±50.0	NONE (1)	MISSILE LEVEL D WIND ZONE 4
NOTE 1: PRODUCT NOT TESTED FOR WATER PENETRATION RESISTANCE. THEREFORE THE PRODUCT MUST BE USED WHERE WATER PENETRATION IS NOT REQUIRED OR WHERE AN OVERHANG MEETING THE REQUIREMENTS OF THE 5TH EDITION (2014) FBC/FRC HAS BEEN EMPLOYED.			

PROJECT #416-1002

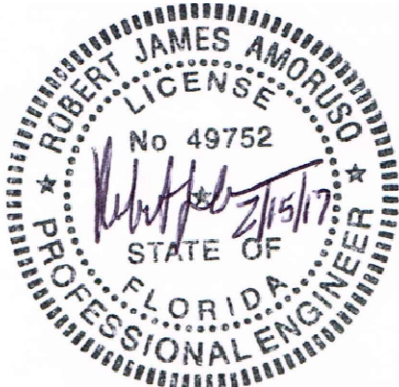
DSA Master Crafted Doors
10681 World Trade Blvd
Raleigh, NC 27617

TITLE:
7/0 x 8/0 Double Full Lite/2 Panels
NOTES - GENERAL & INSTALLATION

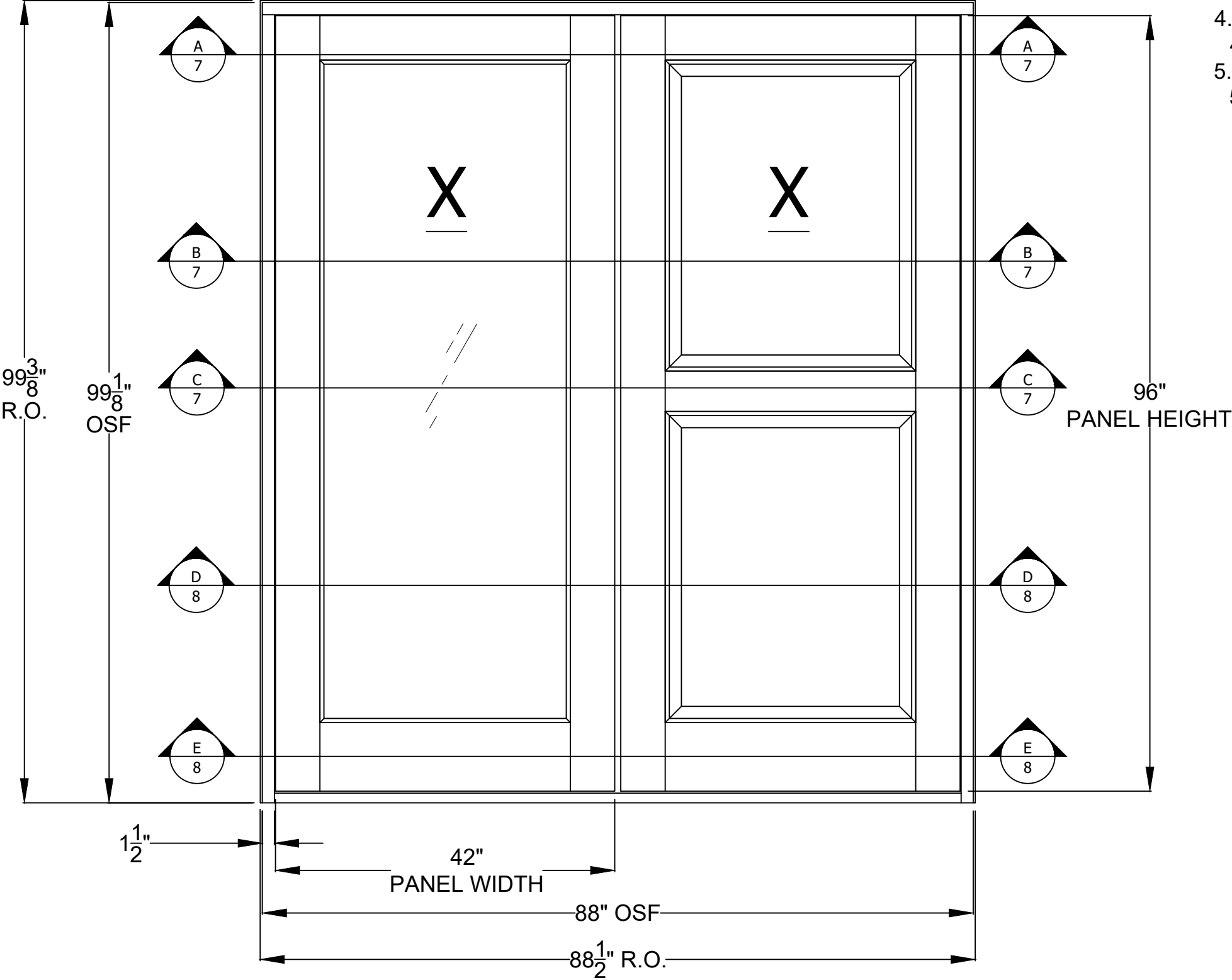
DRAWN BY:	RJA	DATE:	2/7/17
SCALE:	N.T.S.	DRAWING NO:	DSA0003
REV:	---	SHEET:	1 OF 10

PTC PRODUCT DESIGN GROUP, LLC
PO BOX 520775
LONGWOOD, FLORIDA 32752
Phone: 321.690.1788
Fax: 321.690.1789
Email: info@ptc-corp.com
FBPE C.A. NO. 25935

Robert J. Amoruso, P.E.
Florida P.E. No. 49752



ELEVATION
EXTERIOR



- PRODUCT LIMITATIONS:**
- 1. MAXIMUM OVERALL (O.A.) FRAME SIZE
 - 1.1. 88" X 99-1/8"
 - 2. MAXIMUM PANEL SIZE
 - 2.1. 42" X 96"
 - 3. MINIMUM PANEL THICKNESS
 - 3.1. 2-1/4" (NOMINAL)
 - 4. MAXIMUM DAYLIGHT OPENING (D.L.O.)
 - 4.1. 31" X 82"
 - 5. RAISED PANEL SIZE
 - 5.1. 31" X 38-1/2"

PROJECT #416-1002				DATE	BY
				REV	

DSA Master Crafted Doors 10681 World Trade Blvd Raleigh, NC 27617	TITLE: 7/0 x 8/0 Double Full Lite/2 Panels ELEVATION		DRAWN BY: RJA		DATE: 2/7/17
			SCALE: N.T.S.		DRAWING NO: DSA0003
			REV: ---		SHEET: 2 OF 10

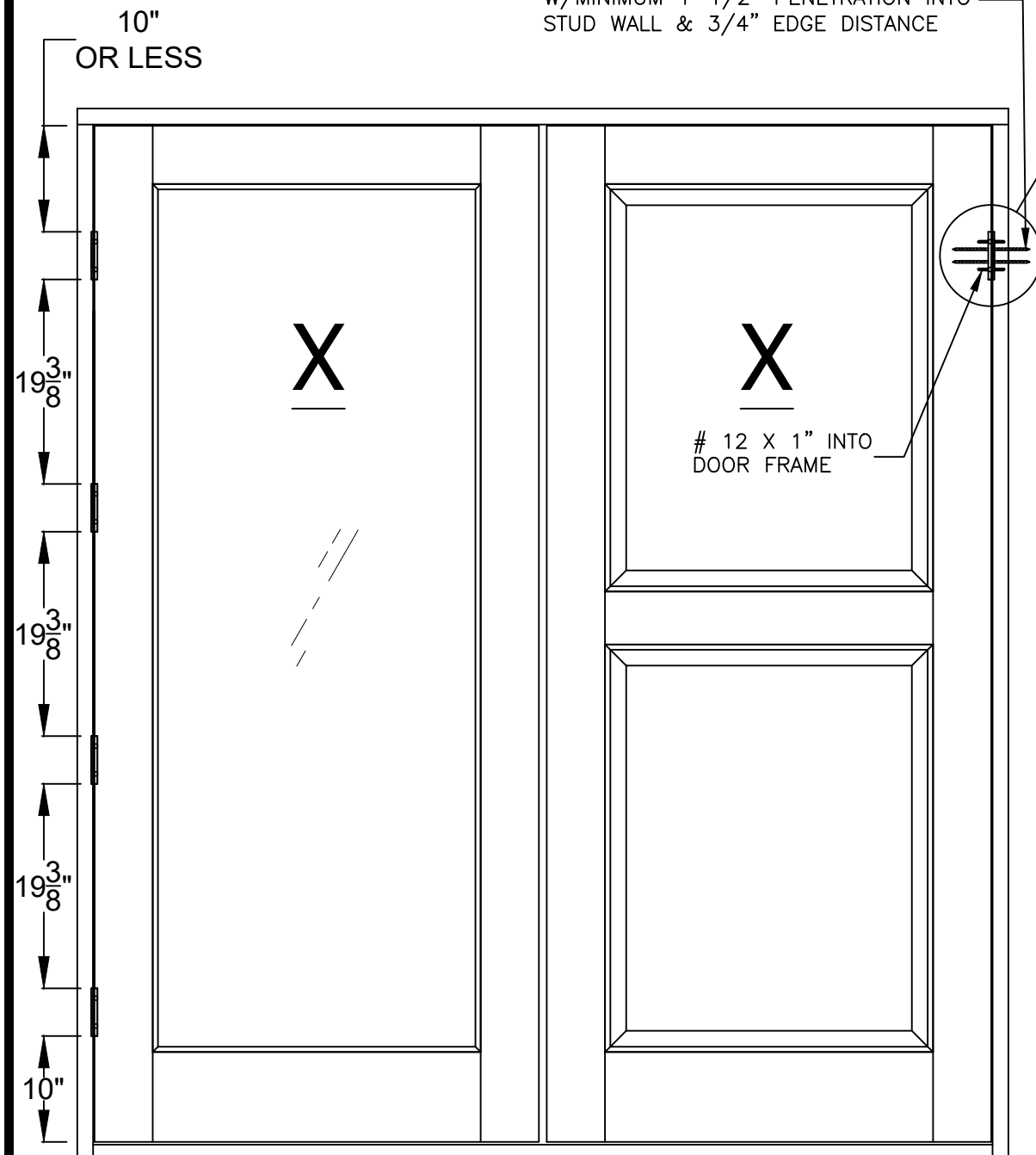
PTC PRODUCT DESIGN GROUP, LLC
PO BOX 520775
LONGWOOD, FLORIDA 32752
Phone: 321.690.1788
Fax: 321.690.1789
Email: info@ptc-corp.com
FBPE C.A. NO. 25935

Robert J. Amoruso, P.E.
Florida P.E. No. 49752

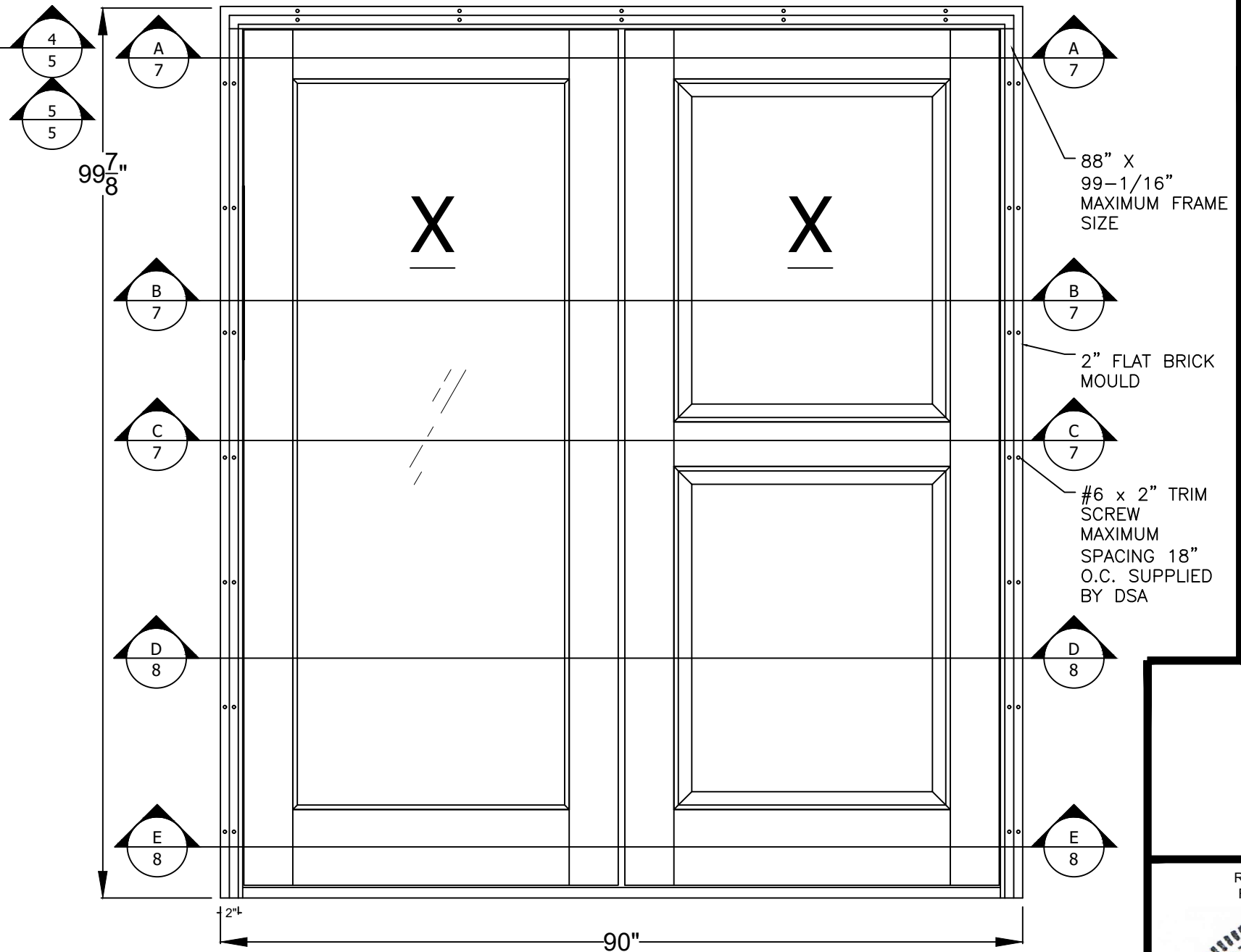


HINGE LOCATION AND INSTALLATION

10"
OR LESS



BRICK MOULD INSTALLATION



PROJECT #416-1002

DSA Master Crafted Doors
10681 World Trade Blvd
Raleigh, NC 27617

7/0 x 8/0 Double Full Lite/2 Panels
ELEVATIONS - HINGES & BRICK MOULD

PREPARED BY:

PDC

PTC PRODUCT DESIGN GROUP, LLC
PO BOX 520775
LONGWOOD, FLORIDA 32752
FBPE C.A. NO. 25985

Phone: 321.690.1788
Fax: 321.690.1789
Email: info@ptc-corp.com

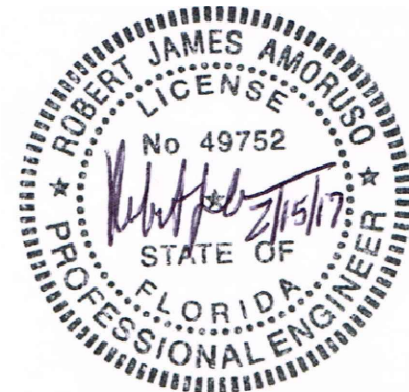
DRAWN BY:	RJA	DATE:	2/7/17
SCALE:	N.T.S.	DRAWING NO:	DSA0003
REV:	---	SHEET:	4 OF 10

DATE	BY
------	----

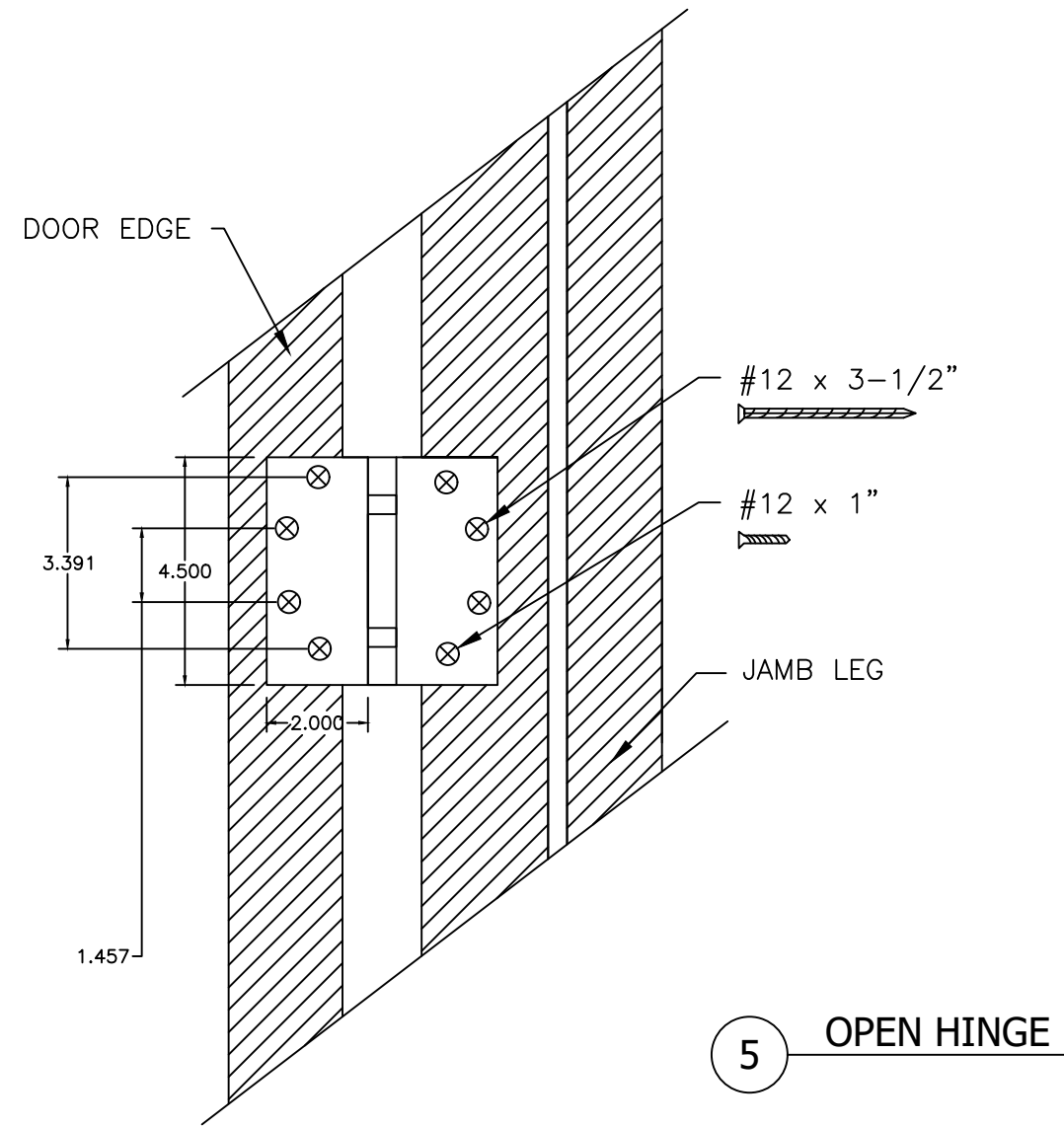
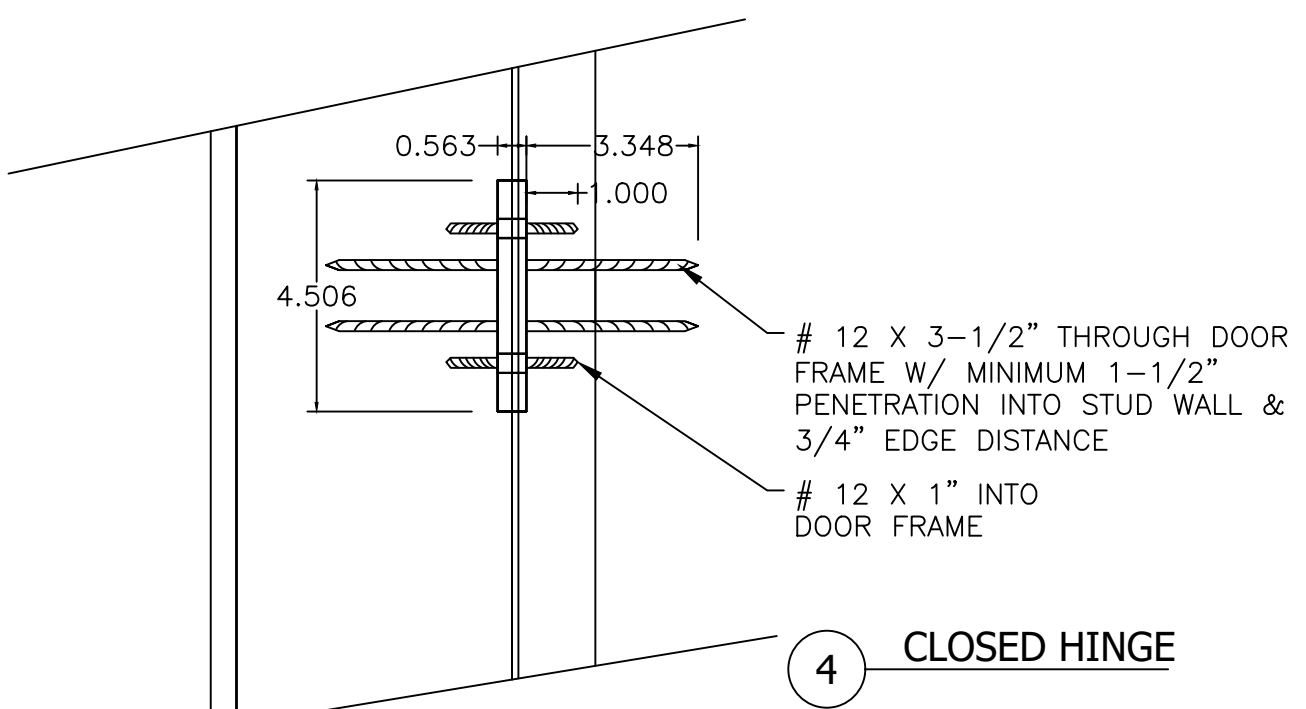
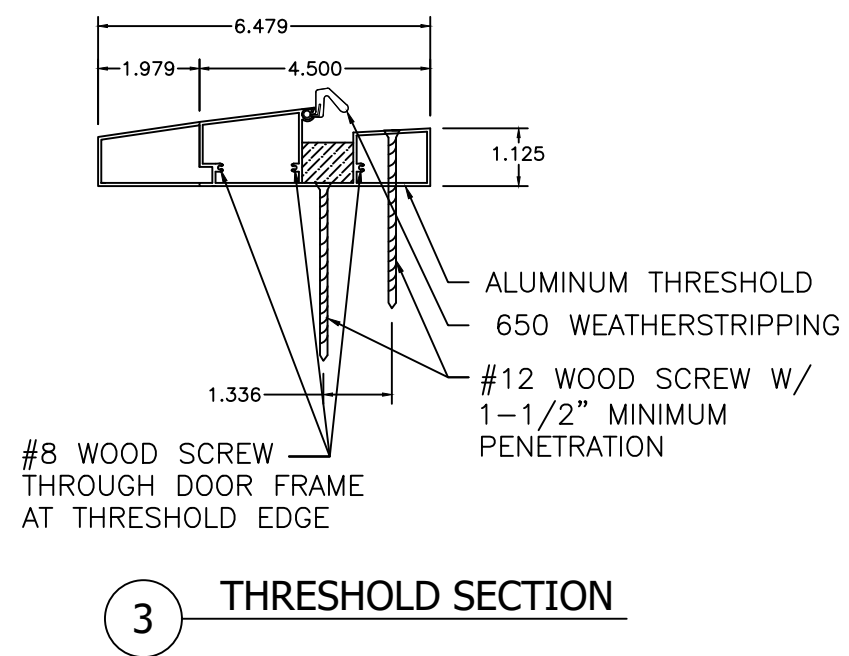
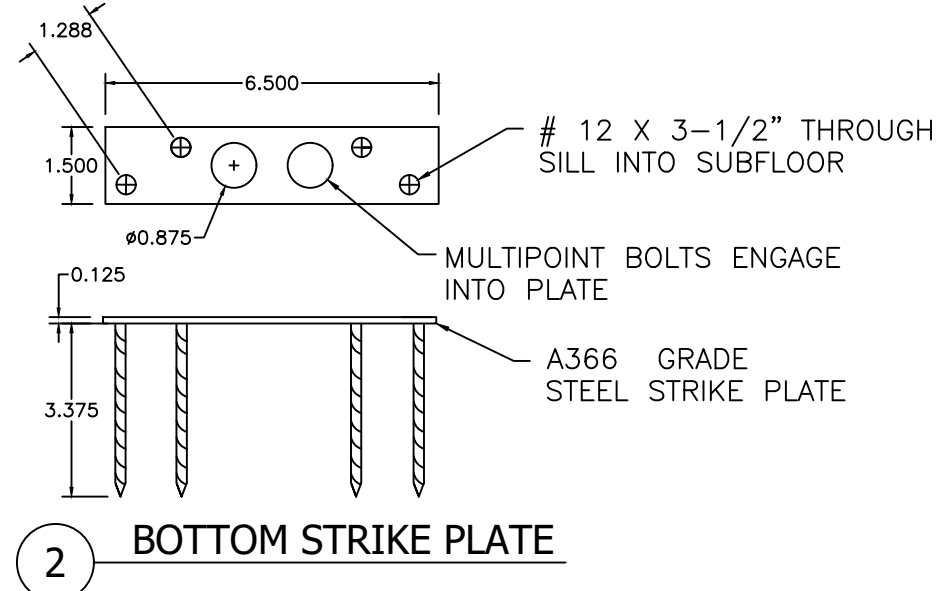
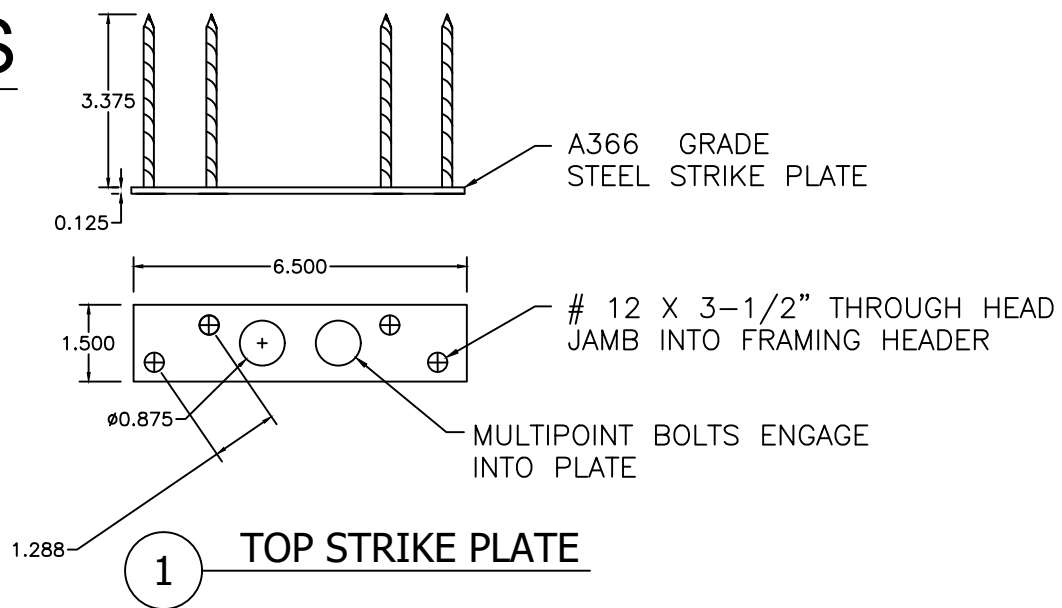
DESCRIPTION

REV

Robert J. Amoruso, P.E.
Florida P.E. No. 49752



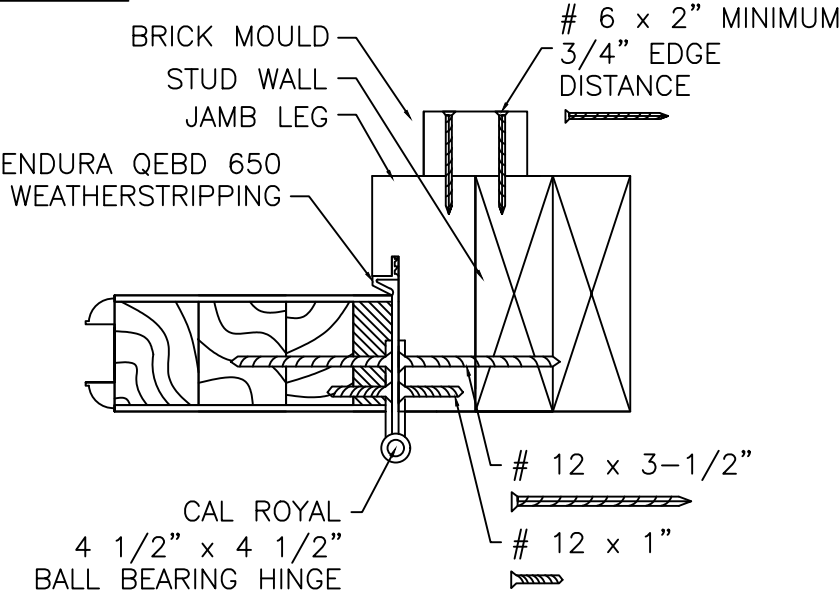
DETAILS



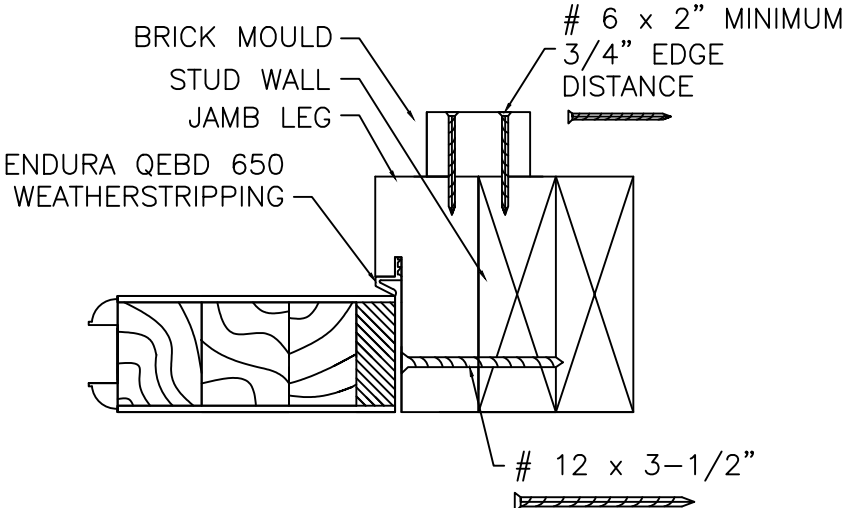
PROJECT #416-1002					BY
					DATE
DSA Master Crafted Doors 10681 World Trade Blvd Raleigh, NC 27617					DESCRIPTION
					REV
TITLE: 7/0 x 8/0 Double Full Lite/2 Panels DETAILS 1 THRU 5		DRAWN BY: RJA	DATE: 2/7/17	DRAWING NO: DSA0003	SHEET: 5 OF 10
		SCALE: N.T.S.	REV: ---		
PREPARED BY: PTC PRODUCT DESIGN GROUP, LLC PO BOX 520775 LONGWOOD, FLORIDA 32752 FBPE C.A. NO. 25935		PDC Phone: 321.690.1788 Fax: 321.690.1789 Email: info@ptc-corp.com			

Robert J. Amoruso, P.E.
Florida P.E. No. 49752

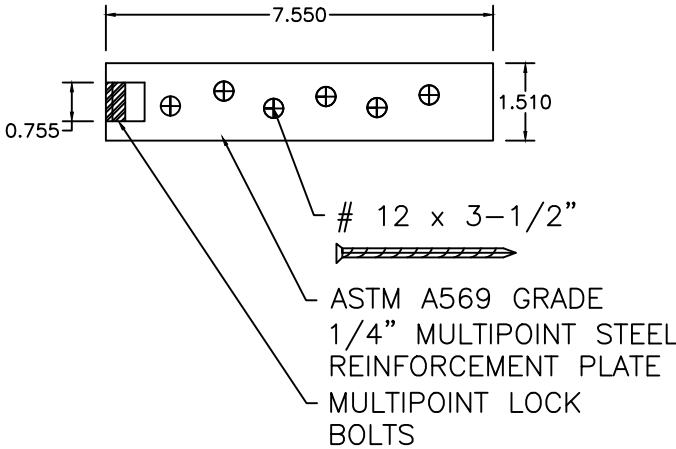
DETAILS



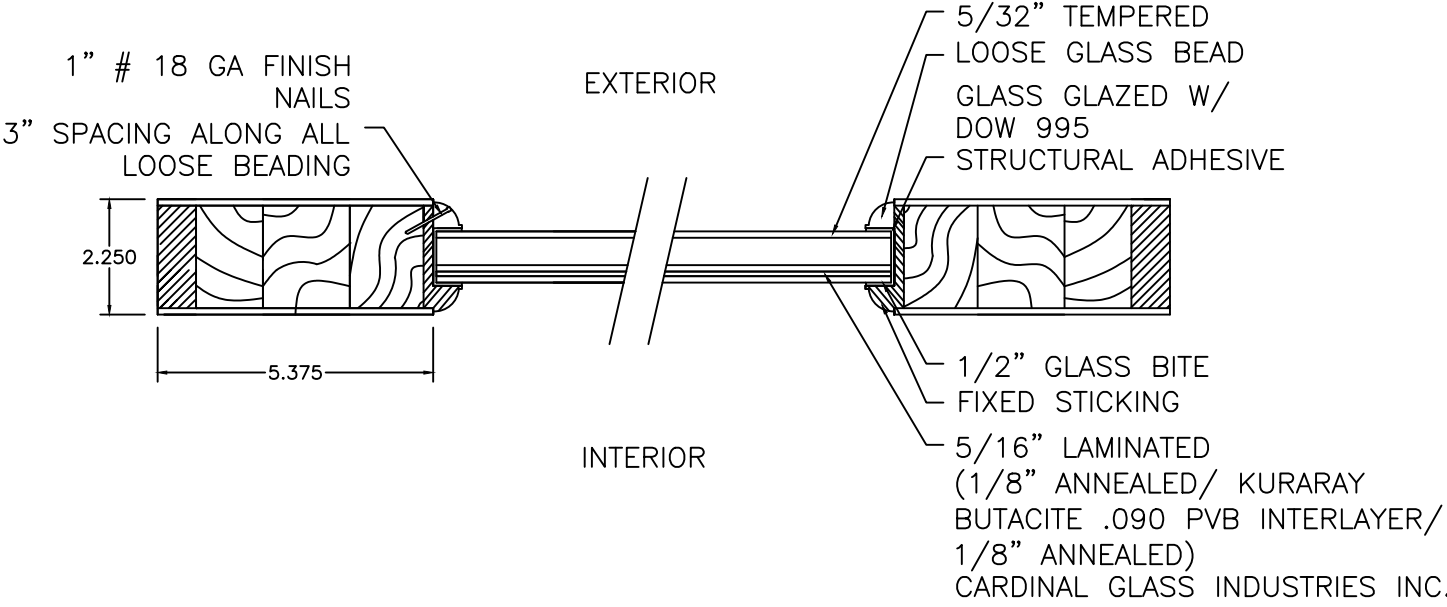
6 JAMB ANCHORAGE @ HINGE



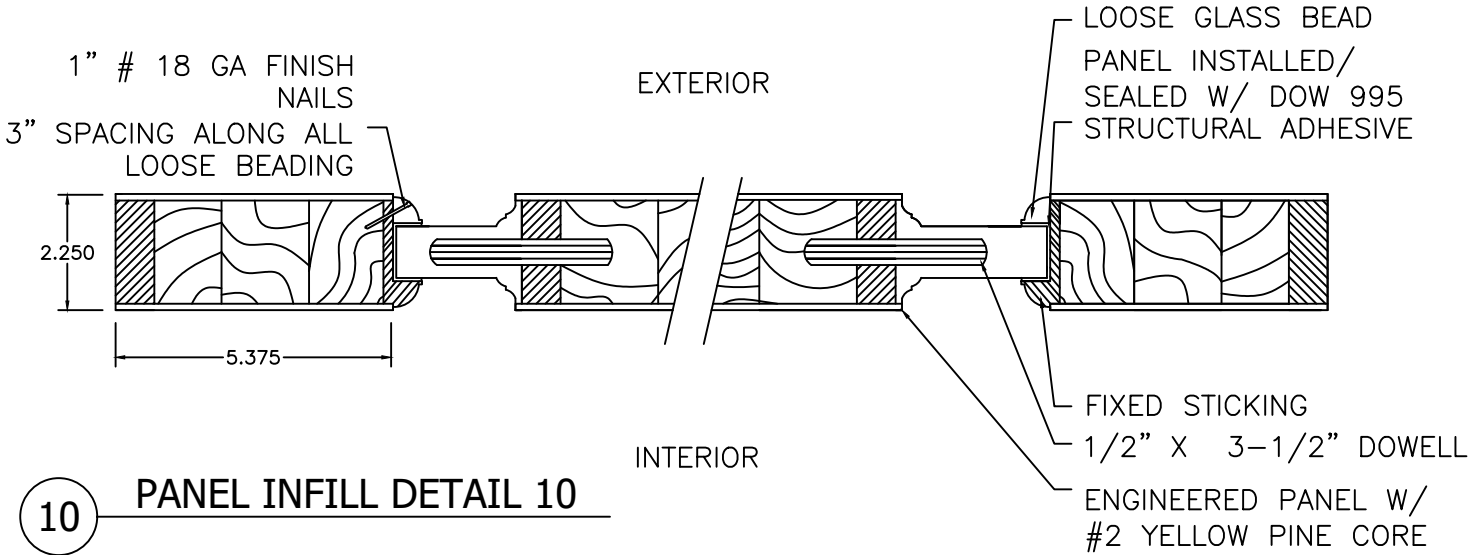
7 JAMB ANCHORAGE (HEAD ANCHORAGE SAME)



8 REINFORCEMENT PLATE AT MULTIPOINT LOCK



9 PANEL GLAZING DETAIL 9



10 PANEL INFILL DETAIL 10

PROJECT #416-1002

DSA Master Crafted Doors
10681 World Trade Blvd
Raleigh, NC 27617

7/0 x 8/0 Double Full Lite/2 Panels
DETAILS 6 THRU 10

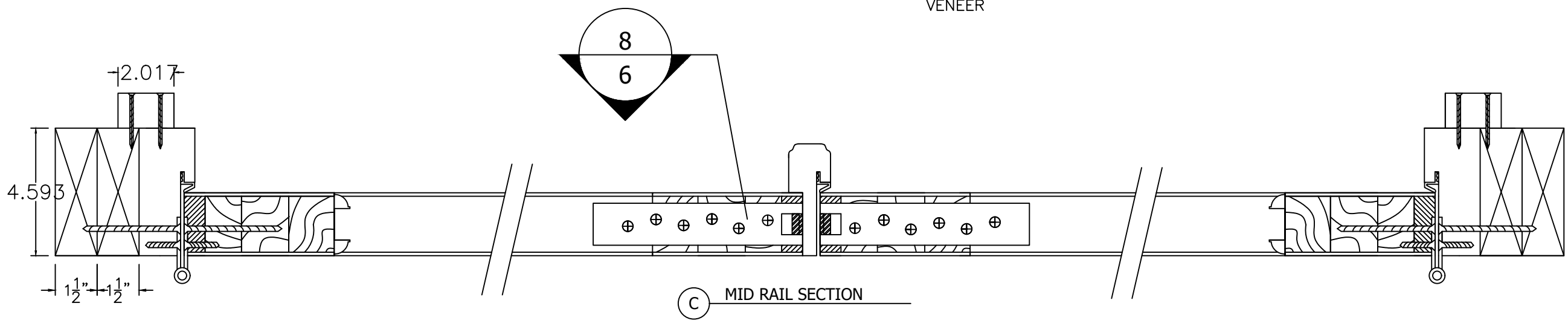
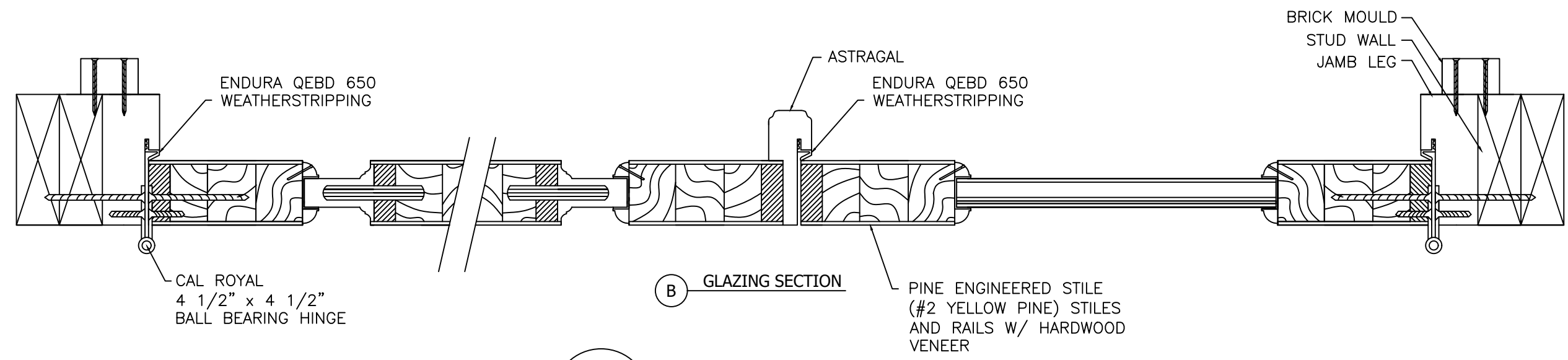
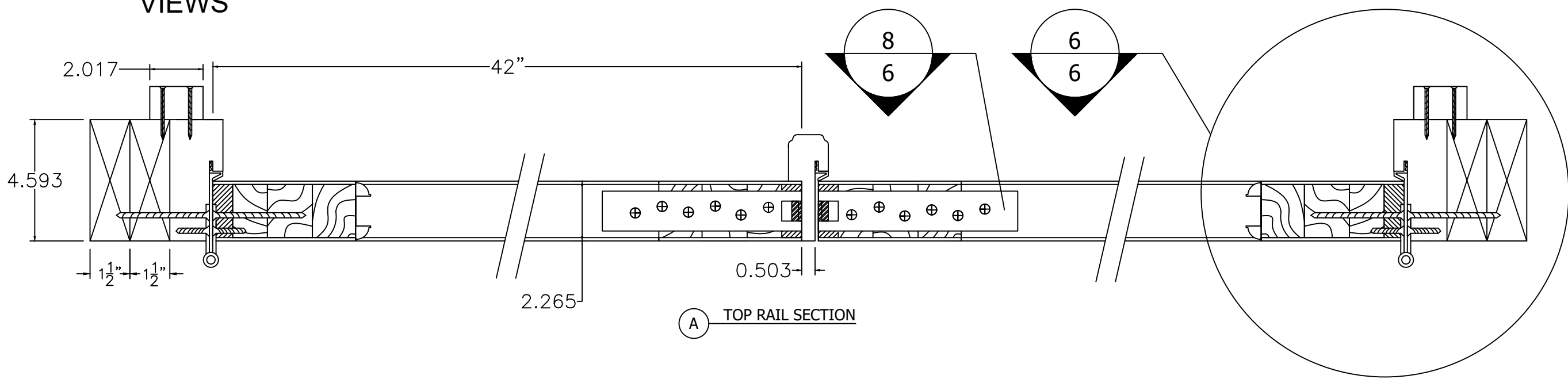
DATE: 2/7/17
DRAWING NO: DSA0003
SHEET: 6 OF 10

PREPARED BY: RJA
SCALE: N.T.S.
REV: ---

PTC PRODUCT DESIGN GROUP, LLC
PO BOX 520775
LONGWOOD, FLORIDA 32752
FBPE C.A. NO. 25935
Phone: 321.690.1788
Fax: 321.690.1789
Email: info@ptc-corp.com

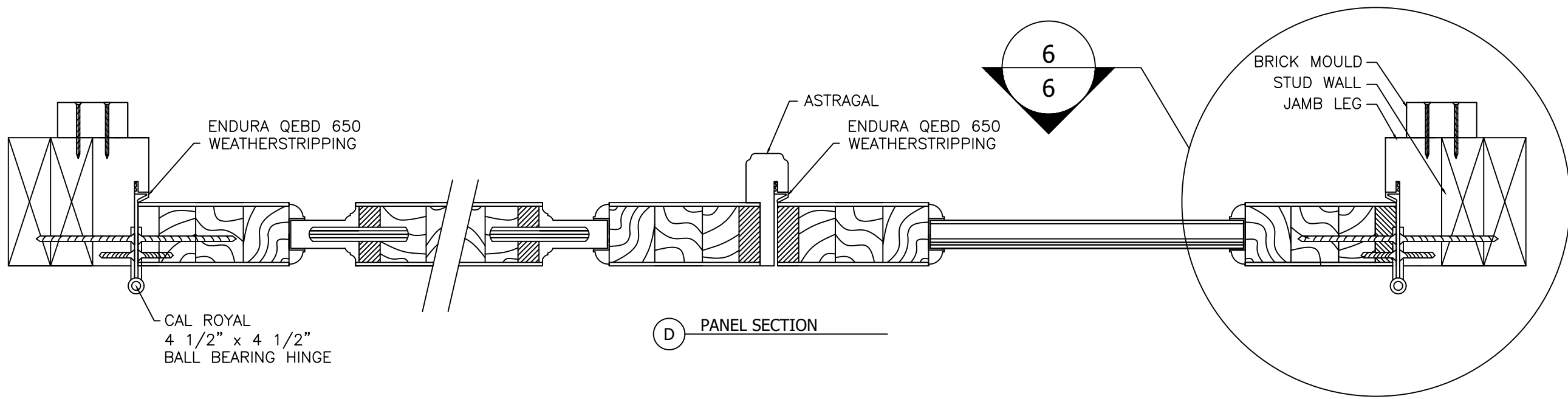
Robert J. Amoruso, P.E.
Florida P.E. No. 49752

SECTIONS
DOOR HORIZONTAL
VIEWS

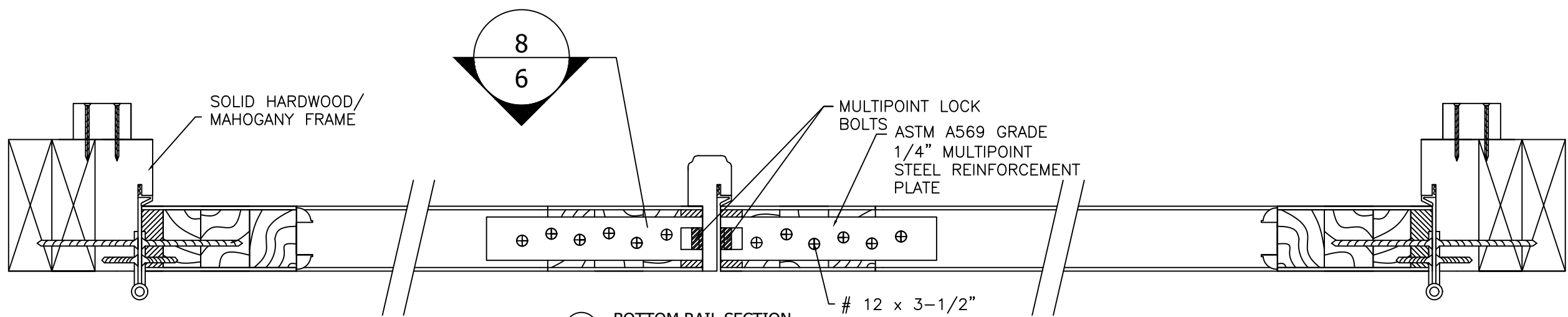


PROJECT #416-1002									
			</						

SECTIONS
DOOR HORIZONTAL
VIEWS



D PANEL SECTION



E BOTTOM RAIL SECTION

12 x 3-1/2"

PROJECT #416-1002			
REV	DESCRIPTION	DATE	BY

DSA Master Crafted Doors
10681 World Trade Blvd
Raleigh, NC 27617

7/0 x 8/0 Double Full Lite/2 Panels
DOOR SECTIONS - HORIZONTAL

DATE: 2/7/17
DRAWING NO: DSA0003
SHEET: 8 OF 10

DRAWN BY: RJA
SCALE: N.T.S.
REV: ---

PREPARED BY: **PTC**

PTC PRODUCT DESIGN GROUP, LLC
PO BOX 520775
LONGWOOD, FLORIDA 32752
FBPE C.A. NO. 25935

Phone: 321.690.1788
Fax: 321.690.1789
Email: info@ptc-corp.com

Robert J. Amoruso, P.E.
Florida P.E. No. 49752

ROBERT JAMES AMORUSO
LICENSE
No 49752
STATE OF
FLORIDA
PROFESSIONAL ENGINEER

Robert J. Amoruso
2/15/17

MAXIMUM FRAME, DOOR PANEL AND D.L.O. SIZES SHOWN ON SHEET 2 MUST BE MET.

Three vertical panels with a striped pattern. Each panel has a central square frame. The panels are separated by thin vertical lines. The first panel has a single frame. The second panel has a single frame. The third panel has two frames.

A diagram of a door. The door is divided into two main sections. The upper section is a large rectangular panel with a slightly arched top. The lower section is a smaller rectangular panel, centered horizontally, which contains a single upward-pointing arrow.

7/0 x 8/0 Double Full Lite/2 Panels
APPROVED CONFIGURATIONS

ALL INFORMATION CONTAINED HEREIN IS UNCLASSIFIED

DRAWN BY:

DATE:



PDC PRODUCT DESIGN GROUP, LLC
 PO BOX 520775
 LONGWOOD, FLORIDA 32752
 FBPE C.A. NO. 25935
 Phone: 321.690.1788
 Fax: 321.690.1789
 Email: info@pdc-corp.com

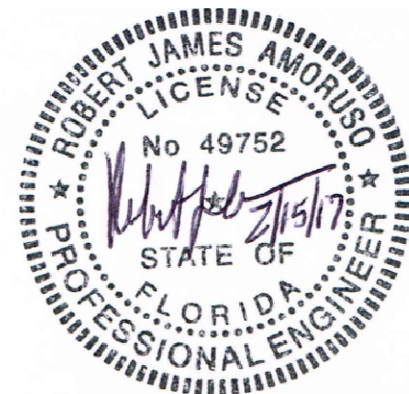
PROJECT #416-1002

DATE	BY
------	----

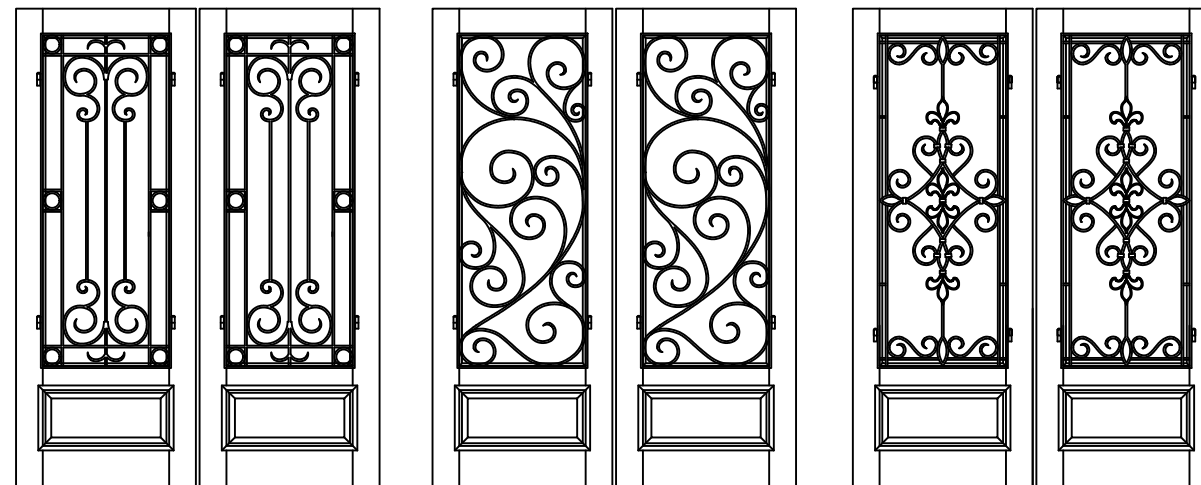
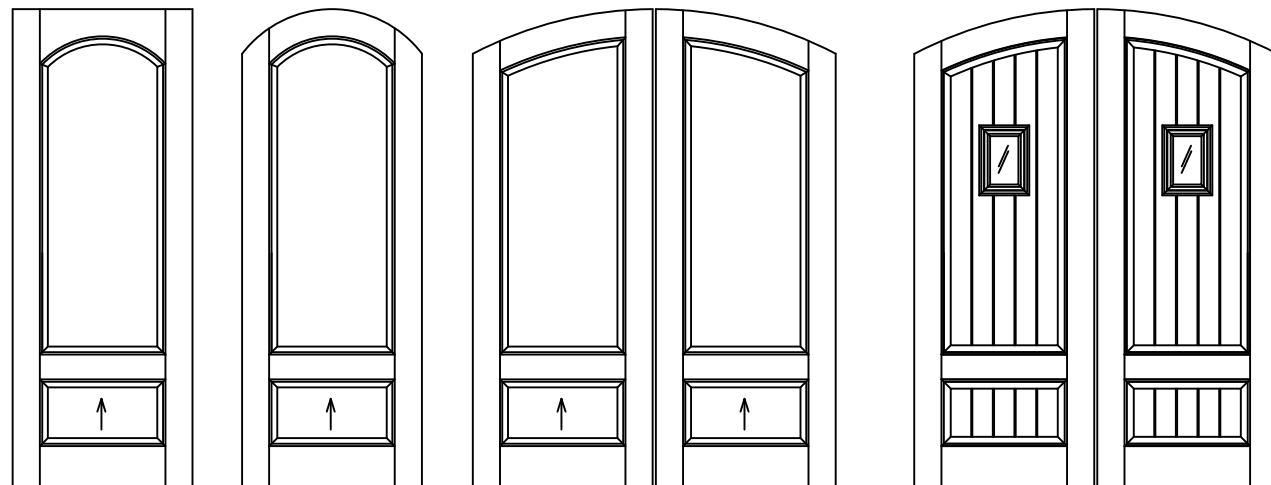
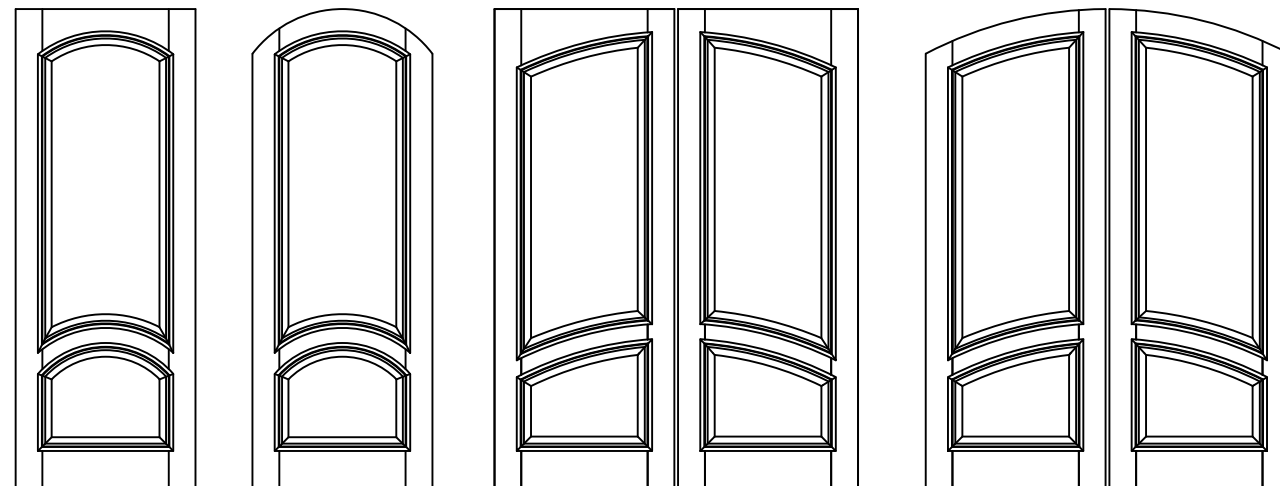
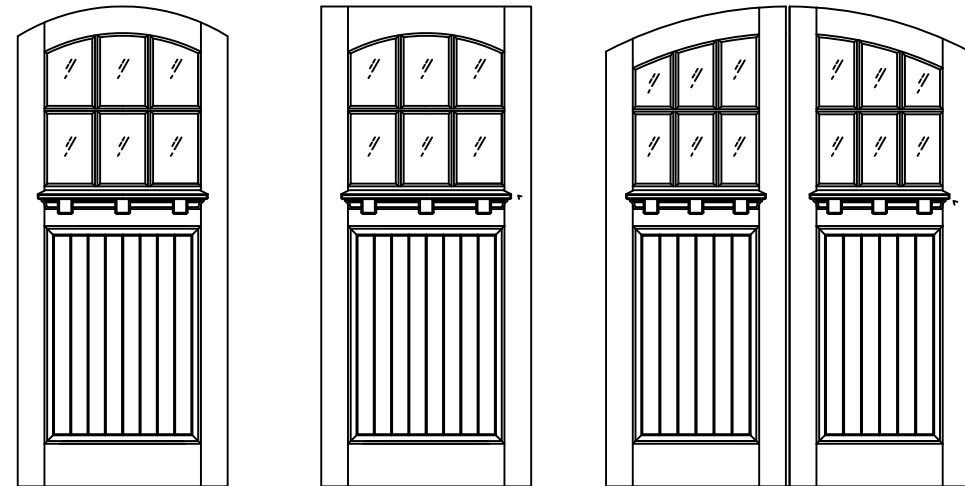
DESCRIPTION

REV

Robert J. Amoruso, P.E.
Florida P.E. No. 49752



MAXIMUM FRAME, DOOR PANEL AND D.L.O. SIZES SHOWN ON SHEET 2 MUST BE MET.



REV	DESCRIPTION	DATE	BY

7/0 x 8/0 Double Full Lite/2 Panels APPROVED CONFIGURATIONS

SHEET:
10 OF 10

PTC PRODUCT DESIGN GROUP, LLC
 PO BOX 520775
 LONGWOOD, FLORIDA 32752
 FBPE C.A. NO. 25935
 Phone: 321.690.1788
 Fax: 321.690.1789
 Email: info@ptc-corp.com