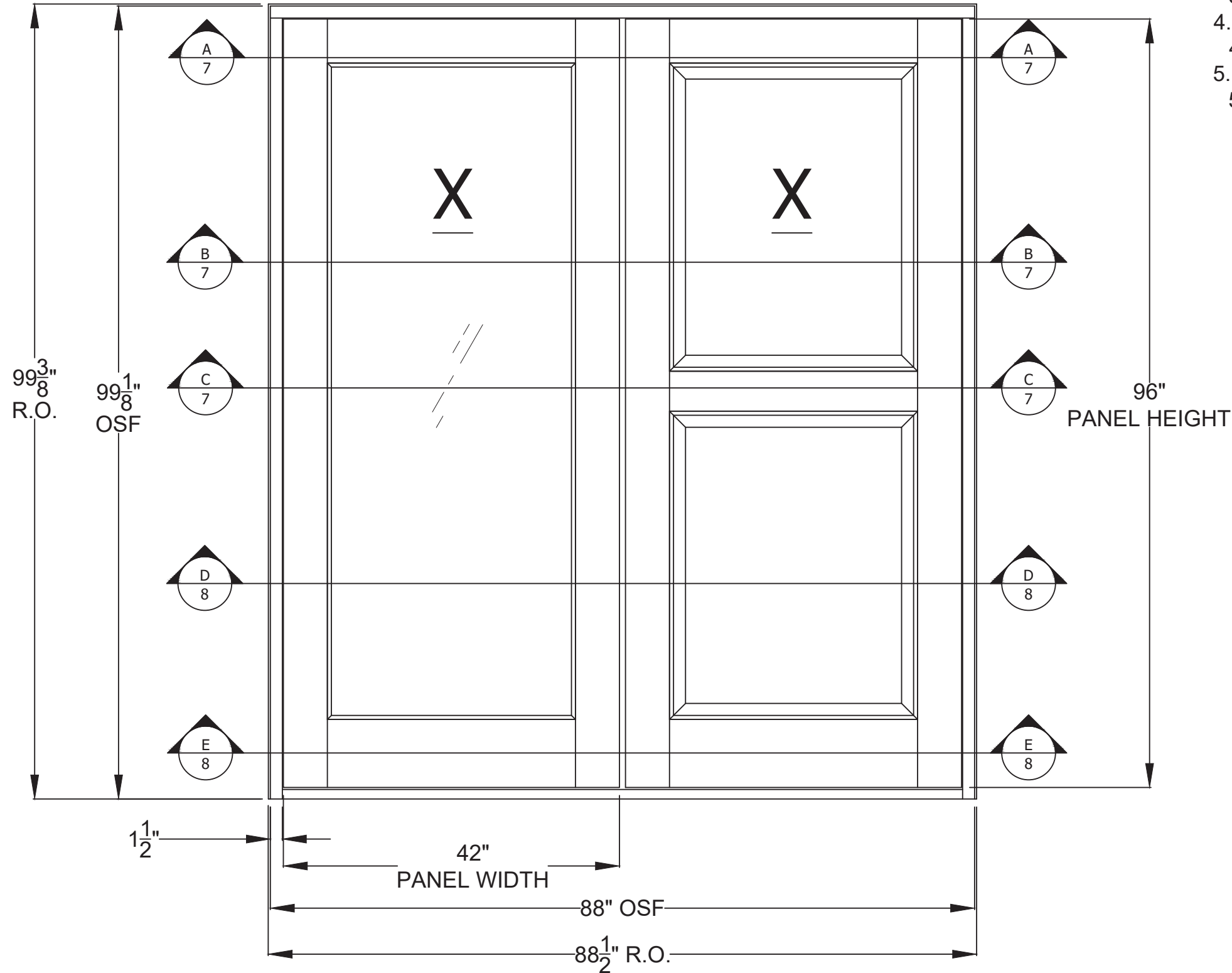


ELEVATION

EXTERIOR



PRODUCT LIMITATIONS:

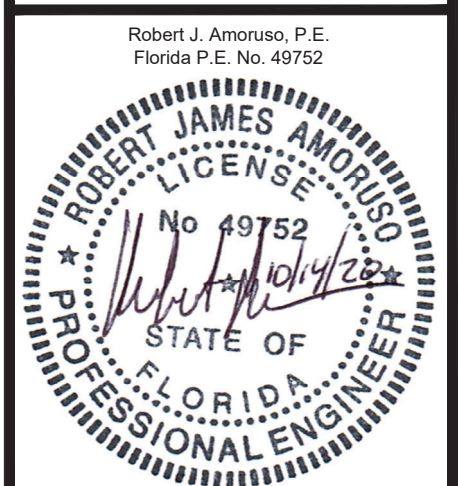
1. MAXIMUM OVERALL (O.A.) FRAME SIZE
 - 1.1. 88" X 99-1/8"
2. MAXIMUM PANEL SIZE
 - 2.1. 42" X 96"
3. MINIMUM PANEL THICKNESS
 - 3.1. 2-1/4" (NOMINAL)
4. MAXIMUM DAYLIGHT OPENING (D.L.O.)
 - 4.1. 31" X 82"
5. RAISED PANEL SIZE
 - 5.1. 31" X 38-1/2"

PROJECT #420-0601			

DSA Master Crafted Doors 10681 World Trade Blvd Raleigh, NC 27617	DATE:	2/7/17
	DRAWING NO.:	DSA0003
TITLE:	7/0 x 8/0 Double Full Lite/2 Panels ELEVATION	
DRAWN BY:	RJA	
SCALE:	N.T.S.	
REV:	A	SHEET: 2 OF 10

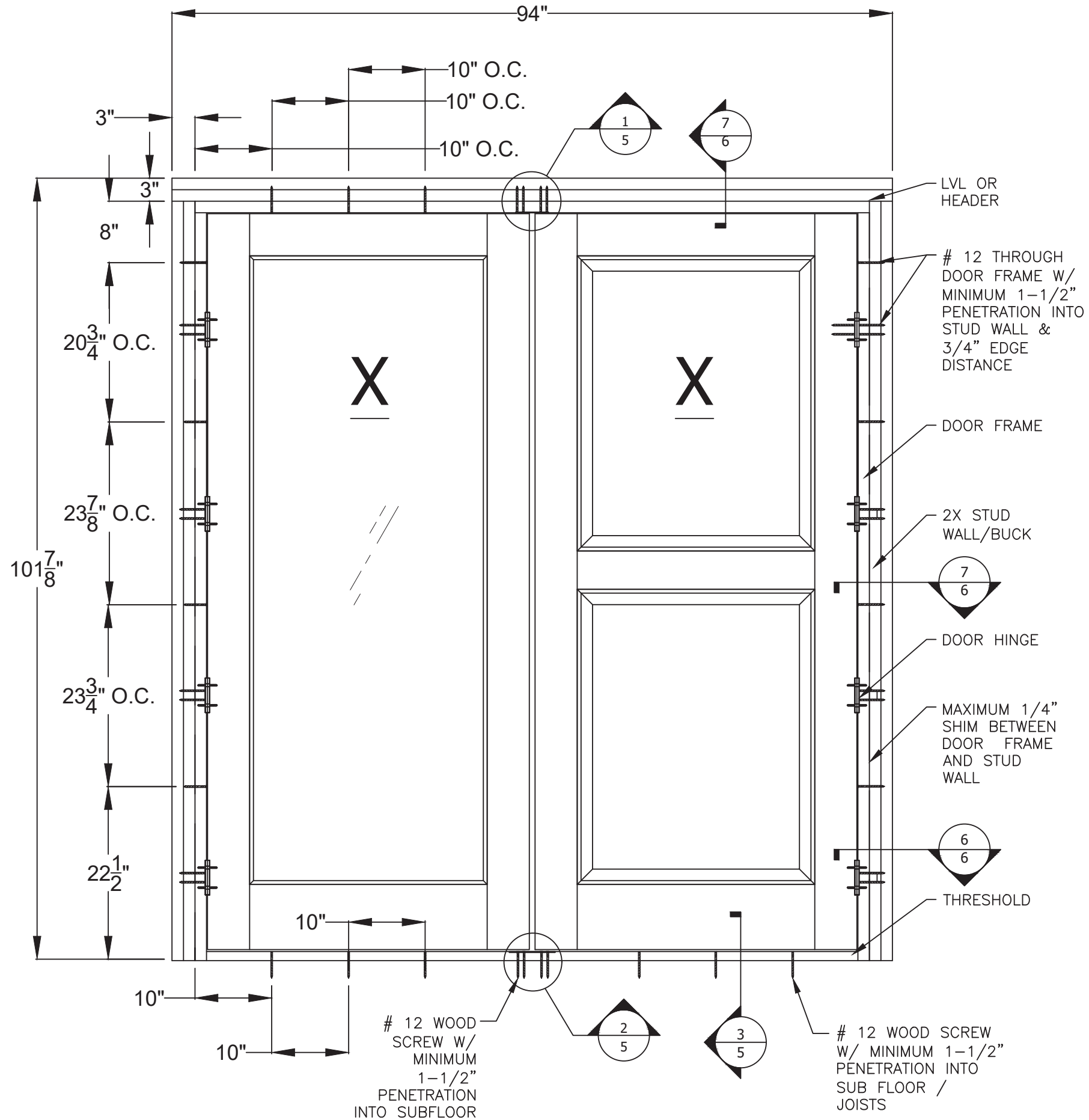


Robert J. Amoruso, P.E.
 Florida P.E. No. 49752



ELEVATION

INSTALLATION ANCHORAGE



PROJECT #420-0601

		10/14/20	RJA
		UPDATED TO CURRENT FBC	DATE
		REV	DESCRIPTION

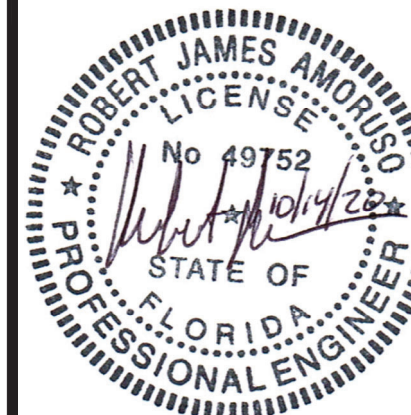
DSA Master Crafted Doors
 10681 World Trade Blvd
 Raleigh, NC 27617

TITLE: 7/0 x 8/0 Double Full Lite/2 Panels
 ELEVATION - ANCHOR LAYOUT

DATE:	2/7/17
DRAWING NO.:	DSA0003
SCALE:	N.T.S.
REV:	A
SHEET:	3 OF 10



Robert J. Amoruso, P.E.
 Florida P.E. No. 49752



ELEVATION

HINGE LOCATION AND INSTALLATION

12 X 3-1/2" THROUGH DOOR FRAME
W/MINIMUM 1-1/2" PENETRATION INTO
STUD WALL & 3/4" EDGE DISTANCE

10"
OR LESS

12 X 1" INTO
DOOR FRAME

ELEVATION

BRICK MOULD INSTALLATION

88" X
99-1/16"
MAXIMUM FRAME
SIZE

2" FLAT BRICK
MOULD

#6 x 2" TRIM
SCREW
MAXIMUM
SPACING 18"
O.C. SUPPLIED
BY DSA

PROJECT #420-0601

DSA Master Crafted Doors
10681 World Trade Blvd
Raleigh, NC 27617

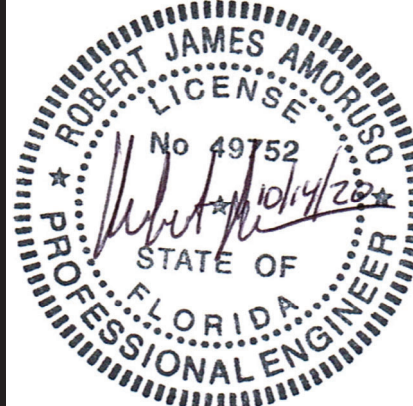
7/0 x 8/0 Double Full Lite/2 Panels
ELEVATIONS - HINGES & BRICK MOULD

PROJECT #420-0601	DATE	DESCRIPTION	BY
	10/14/20	UPDATED TO CURRENT FBC	RJA

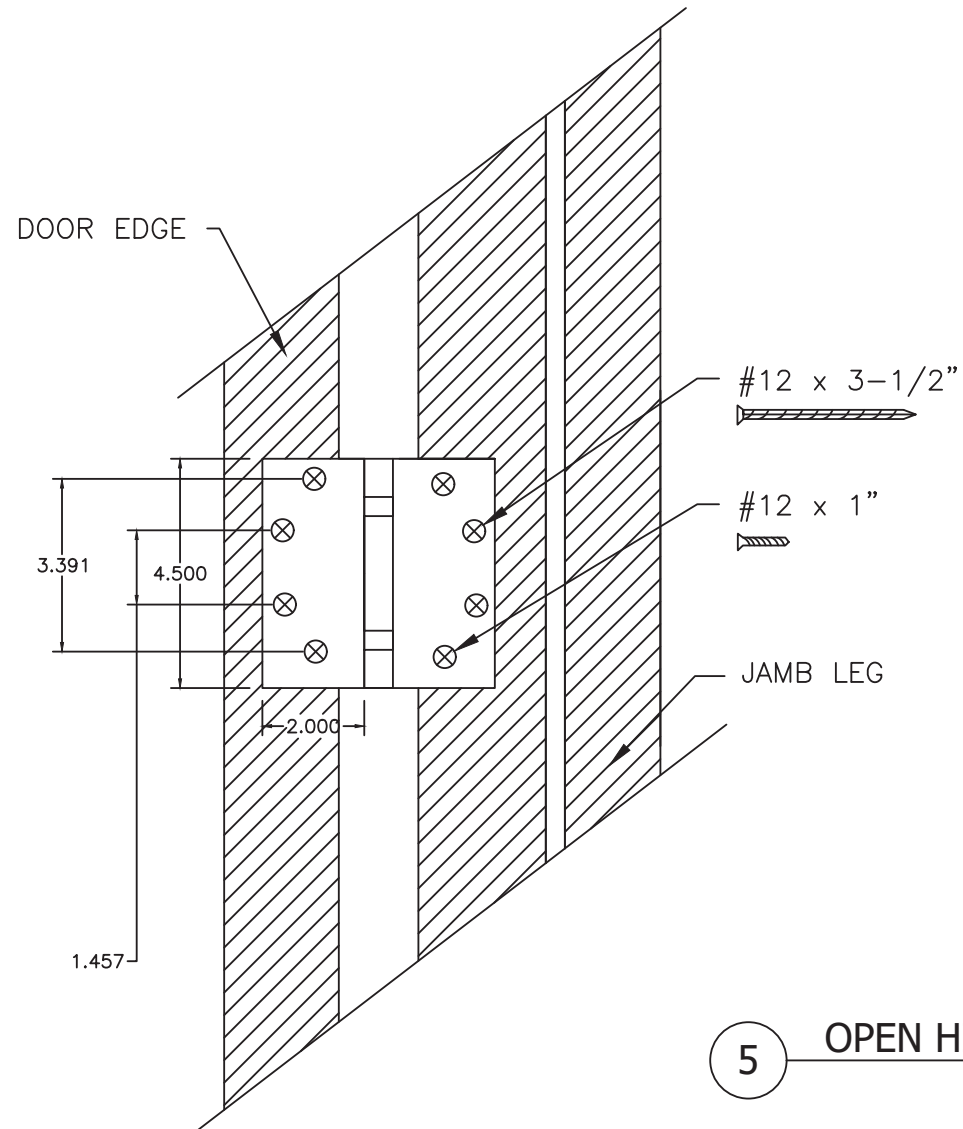
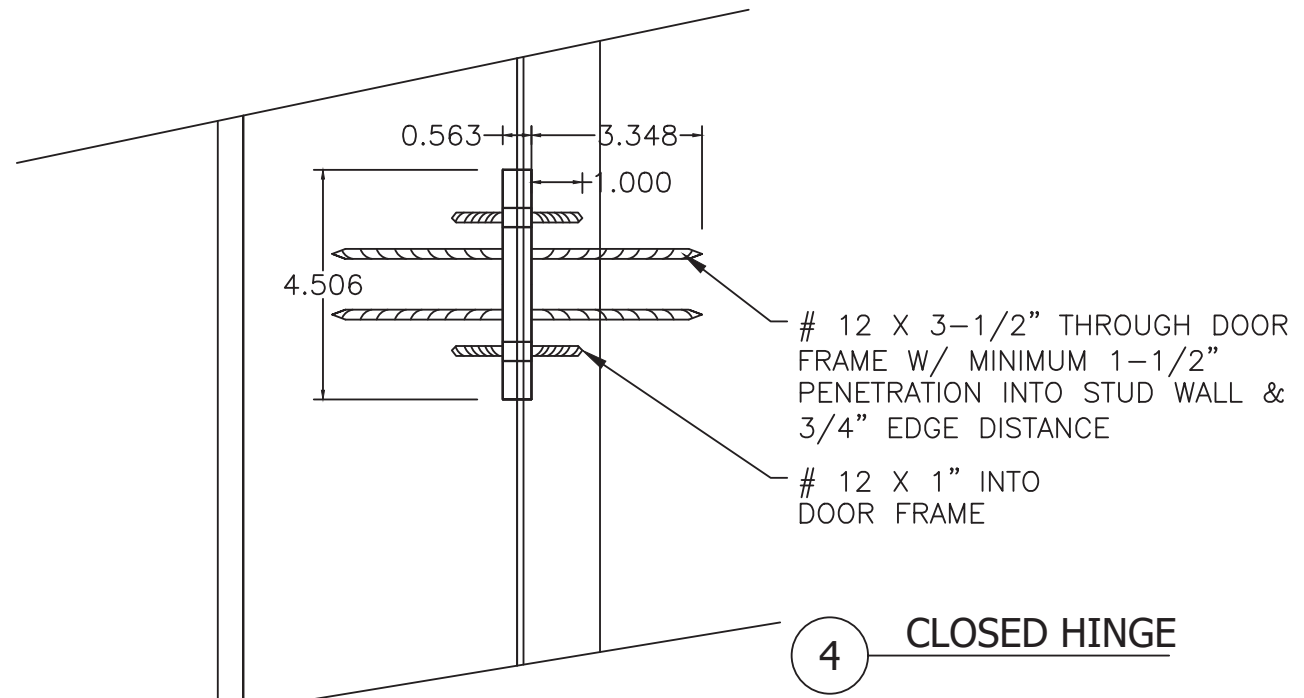
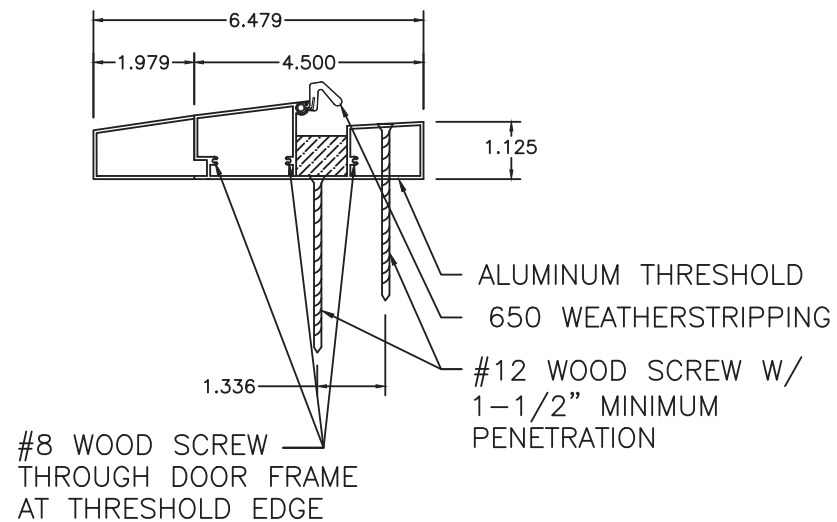
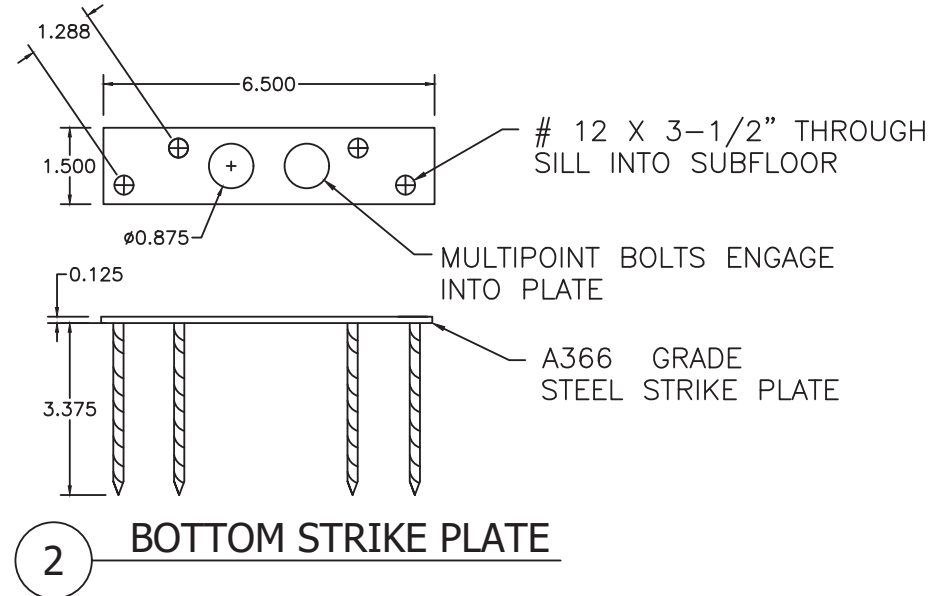
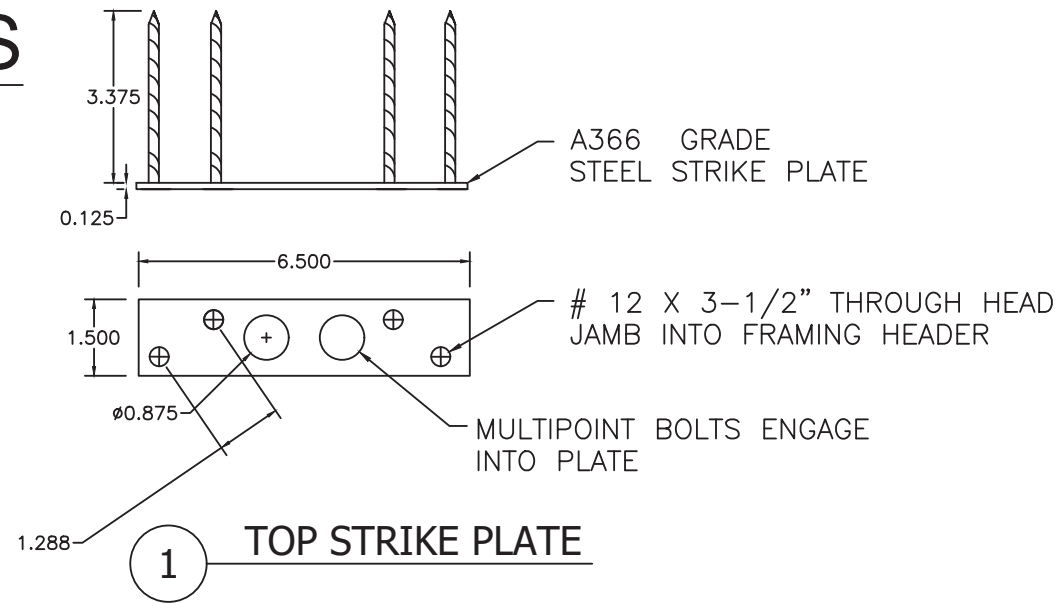
DRAWN BY:	DATE:	DRAWING NO.:	SHEET:
RJA	2/7/17	DSA0003	4 OF 10
SCALE:	REV:		
N.T.S.	A		

PTC PRODUCT DESIGN GROUP, LLC
LONGWOOD, FLORIDA 32752
Phone: 321.690.1788
Fax: 321.690.1789
Email: info@ptc-corp.com
FBPE C.A. NO. 25935

Robert J. Amoruso, P.E.
Florida P.E. No. 49752



DETAILS



PROJECT #420-0601

DSA Master Crafted Doors
10681 World Trade Blvd
Raleigh, NC 27617

TITLE: 710 x 810 Double Full Lite/2 Panels
DETAILS 1 THRU 5

DATE: 2/7/17
DRAWING NO.: DSA0003

SCALE: N.T.S.
REV: A

DESCRIPTION

SHEET: 5 OF 10

BY

DATE

REV

DESCRIPTION

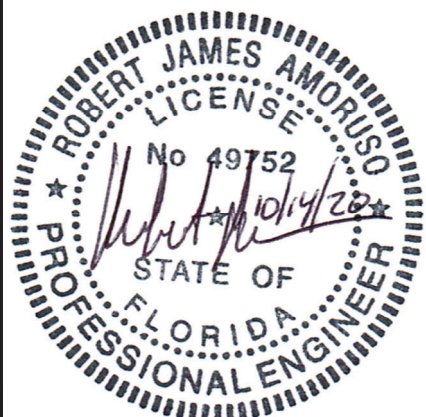
SHEET: 5 OF 10

REV: A

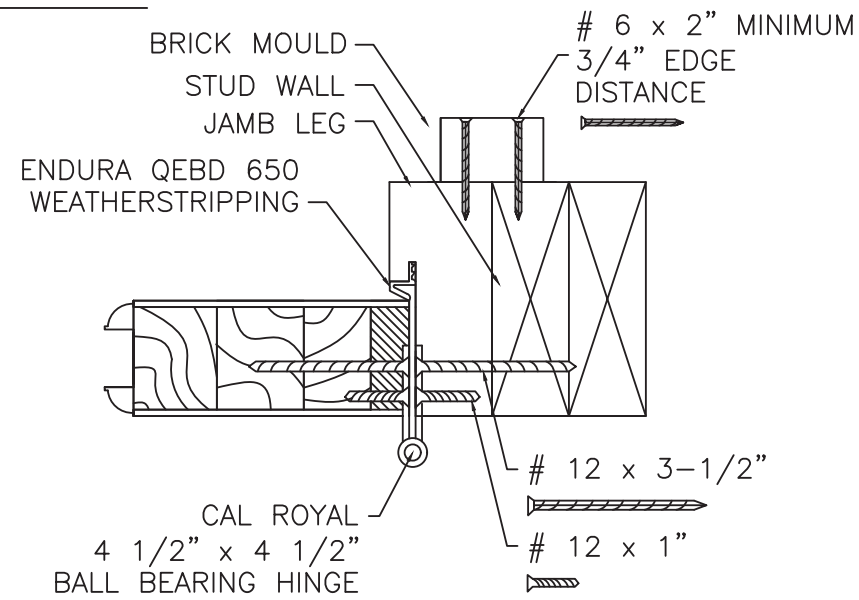
PREPARED BY: RJA
DATE: 2/7/17
DRAWING NO.: DSA0003
SCALE: N.T.S.
REV: A



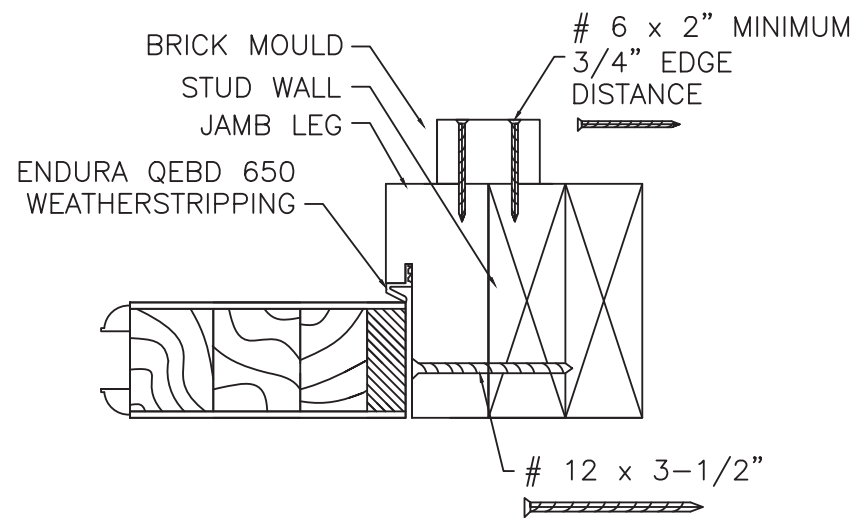
Robert J. Amoruso, P.E.
Florida P.E. No. 49752



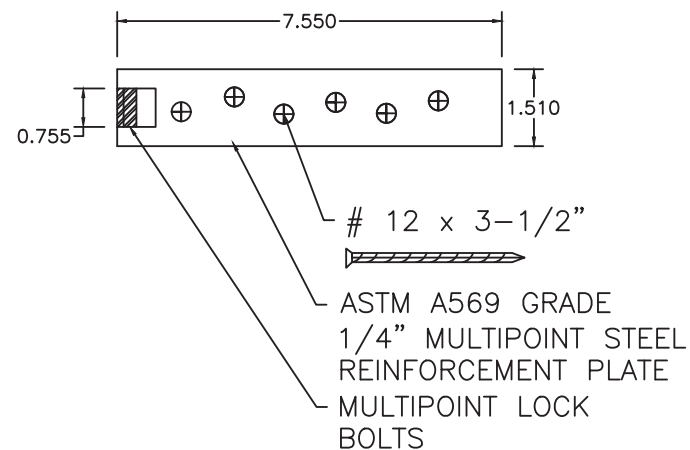
DETAILS



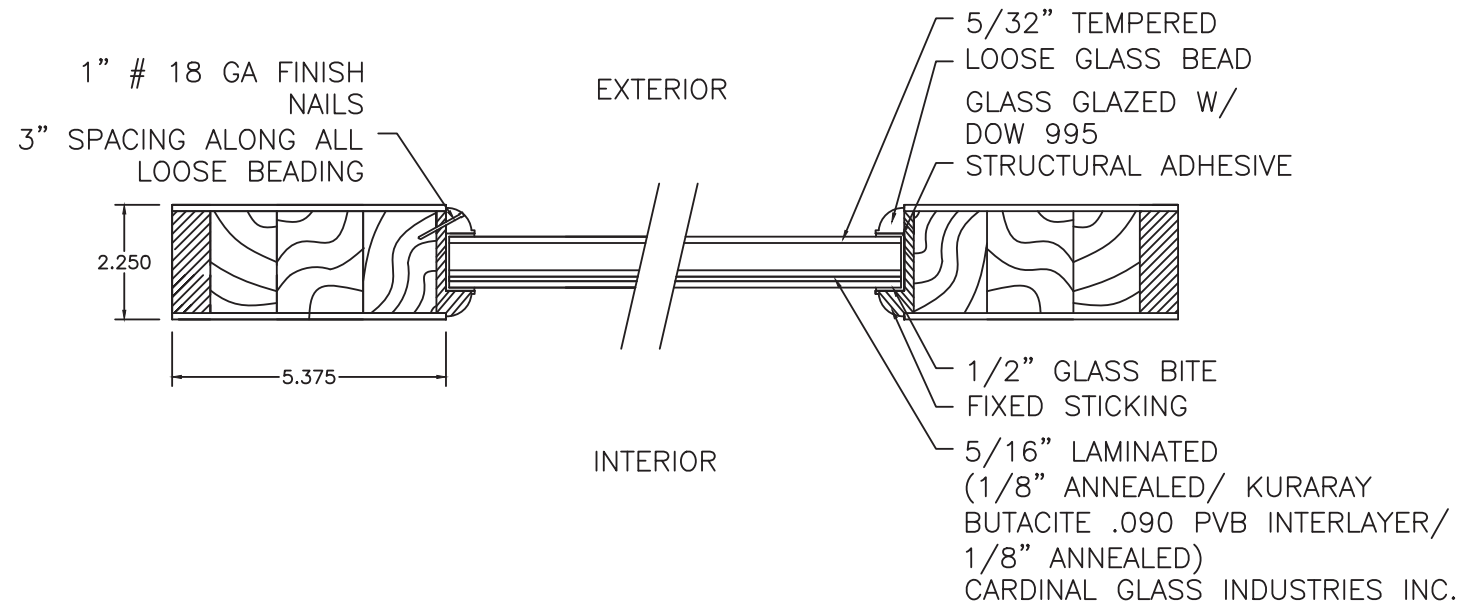
6 JAMB ANCHORAGE @ HINGE



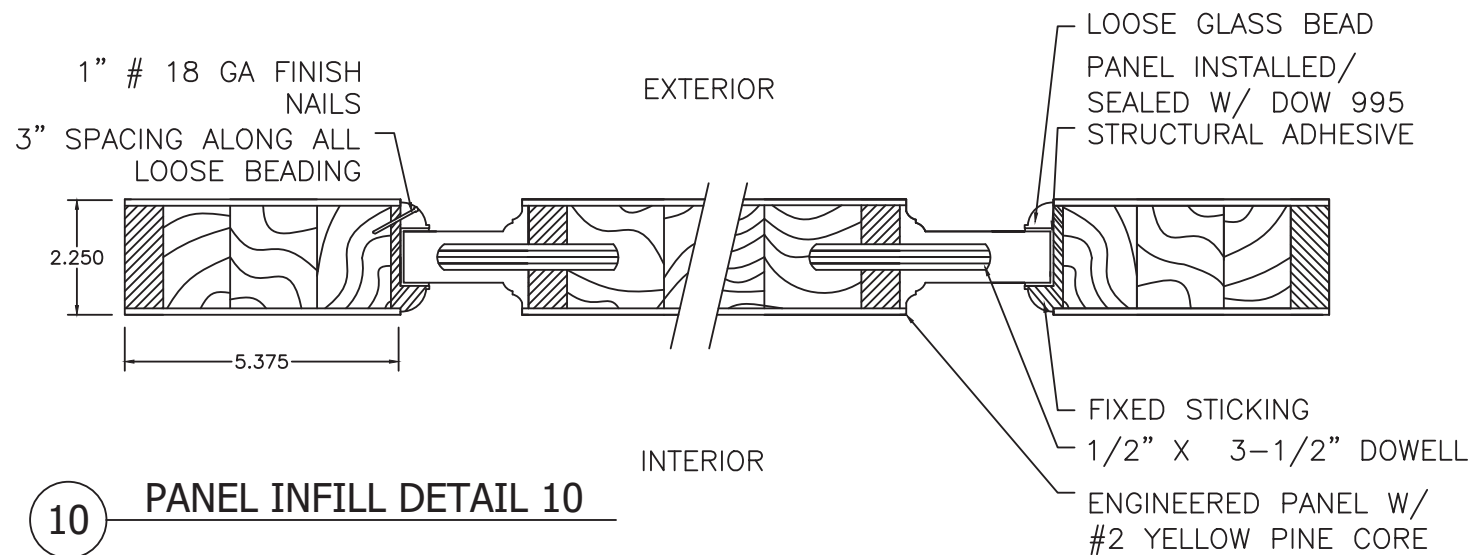
7 JAMB ANCHORAGE (HEAD ANCHORAGE SAME)



8 REINFORCEMENT PLATE AT MULTIPOINT LOCK



9 PANEL GLAZING DETAIL 9



10 PANEL INFILL DETAIL 10

PROJECT #420-0601

DSA Master Crafted Doors
10681 World Trade Blvd
Raleigh, NC 27617

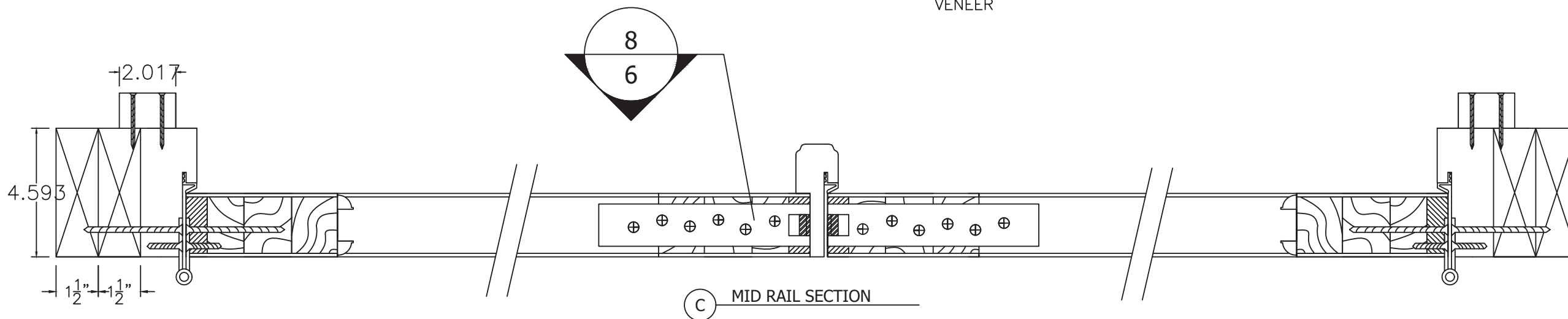
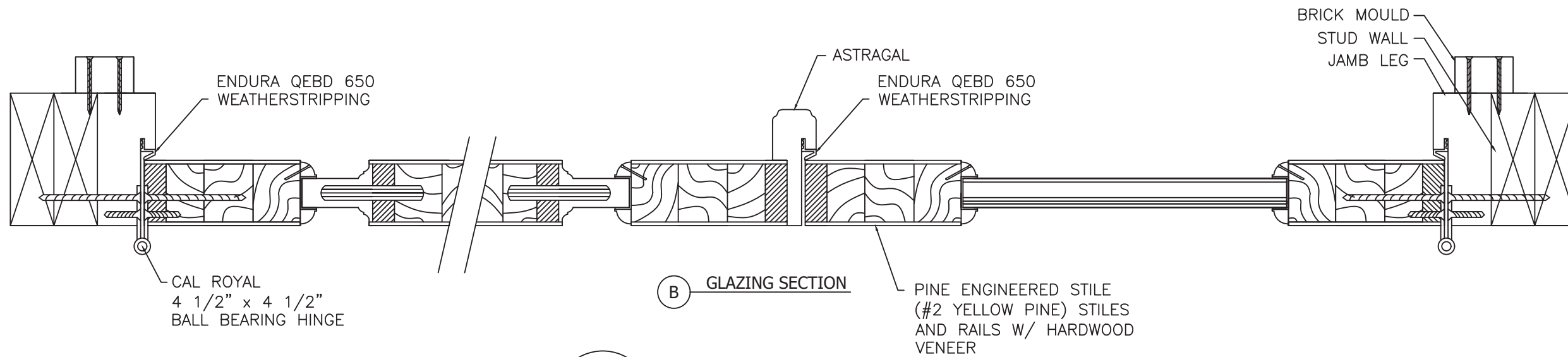
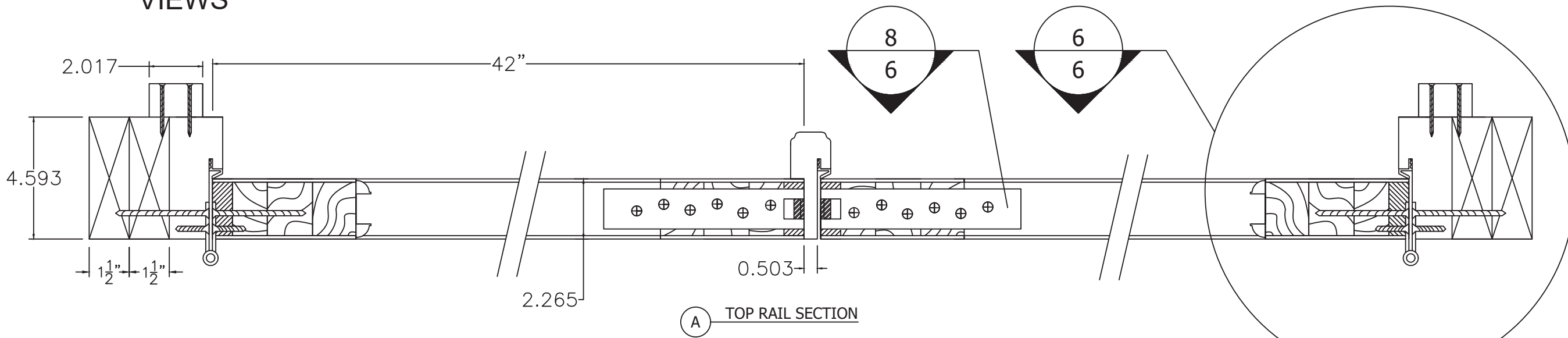
TITLE: 710 x 810 Double Full Lite/2 Panels
DETAILS 6 THRU 10

DATE:	2/7/17	DRAWING NO.:	DSA0003	REV:	A	DESCRIPTION:	UPDATED TO CURRENT FBC	DATE:	10/14/20	BY:	RJA
DRAWN BY:	RJA	SCALE:	N.T.S.	REV:	A	SHEET:	6 OF 10				

Robert J. Amoruso, P.E.
Florida P.E. No. 49752

SECTIONS

DOOR HORIZONTAL VIEWS



PROJECT #420-0601

REV	DESCRIPTION	DATE	BY
A	UPDATED TO CURRENT FBC	10/14/20	RJA

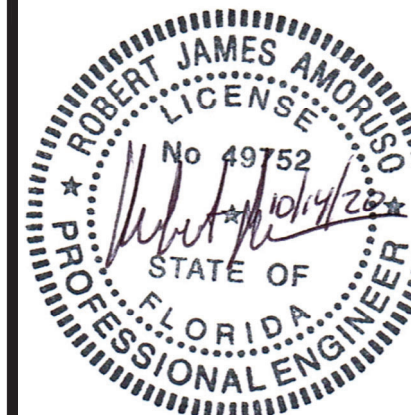
DSA Master Crafted Doors
10681 World Trade Blvd
Raleigh, NC 27617

TITLE: 7/0 x 8/0 Double Full Lite/2 Panels
DOOR SECTIONS - HORIZONTAL

DATE:	2/7/17
DRAWING NO.:	DSA0003
SCALE:	N.T.S.
REV:	A
SHEET:	7 OF 10

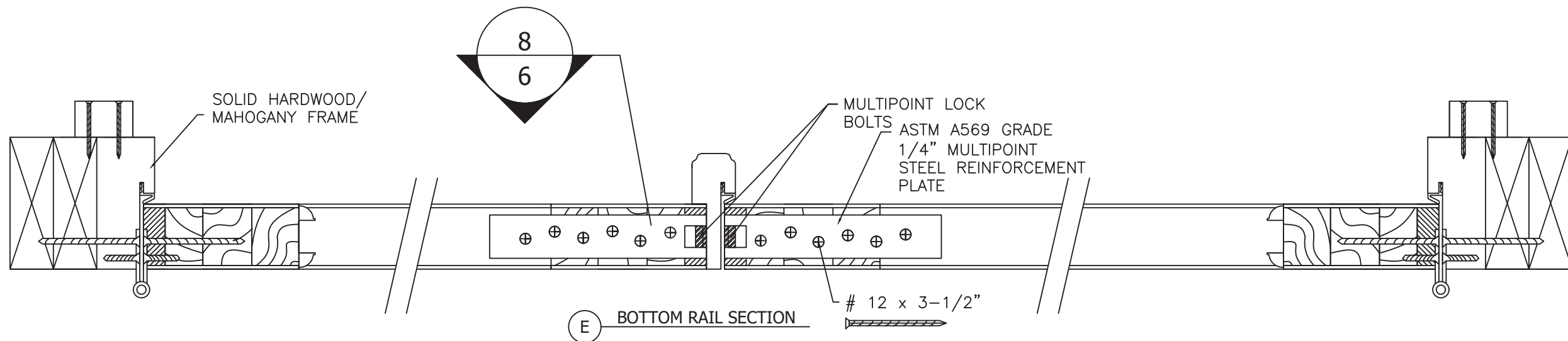
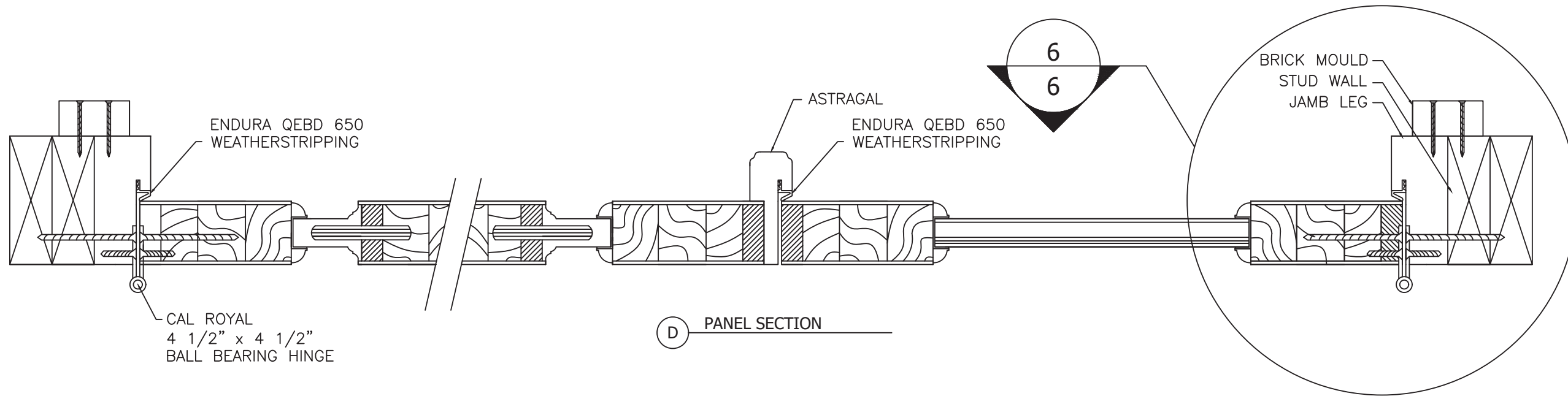


Robert J. Amoruso, P.E.
Florida P.E. No. 49752



SECTIONS

DOOR HORIZONTAL VIEWS



PROJECT #420-0601

		10/14/20	RJA
A	UPDATED TO CURRENT FBC		DATE
REV	DESCRIPTION		BY

DSA Master Crafted Doors
10681 World Trade Blvd
Raleigh, NC 27617

TITLE: 7/0 x 8/0 Double Full Lite/2 Panels
DOOR SECTIONS - HORIZONTAL

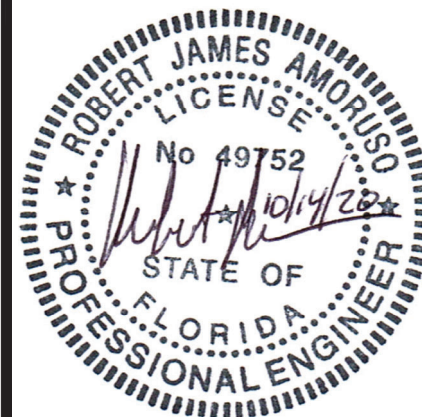
DATE:	2/7/17
DRAWING NO.:	DSA0003
SCALE:	N.T.S.
REV:	A
SHEET:	8 OF 10

PTC

PTC PRODUCT DESIGN GROUP, LLC
LONGWOOD, FLORIDA 32752
FBPE C.A. NO. 25935

Phone: 321.690.1788
Fax: 321.690.1789
Email: info@ptc-corp.com

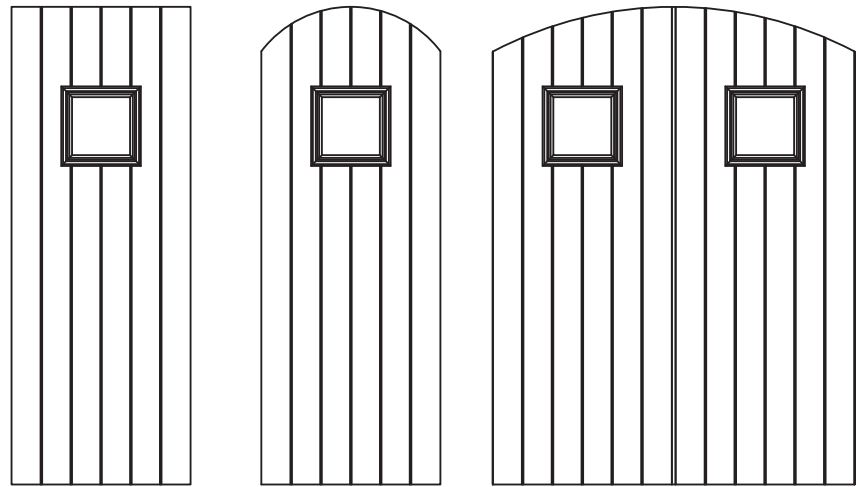
Robert J. Amoruso, P.E.
Florida P.E. No. 49752



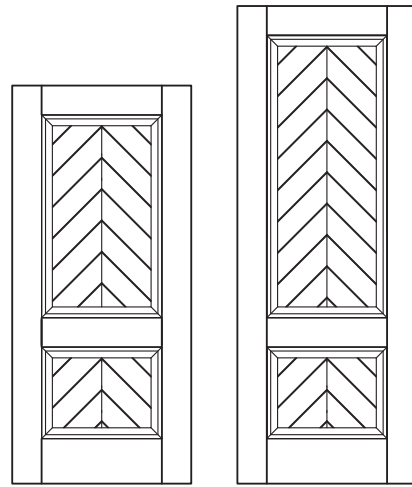
APPROVED CONFIGURATIONS

MAXIMUM FRAME, DOOR PANEL AND D.L.O. SIZES SHOWN ON SHEET 2 MUST BE MET.

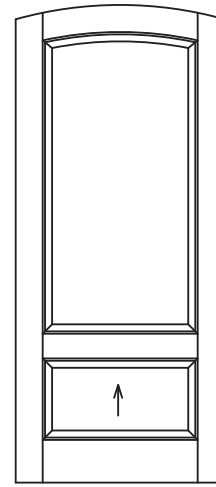
ASPEN COLLECTION



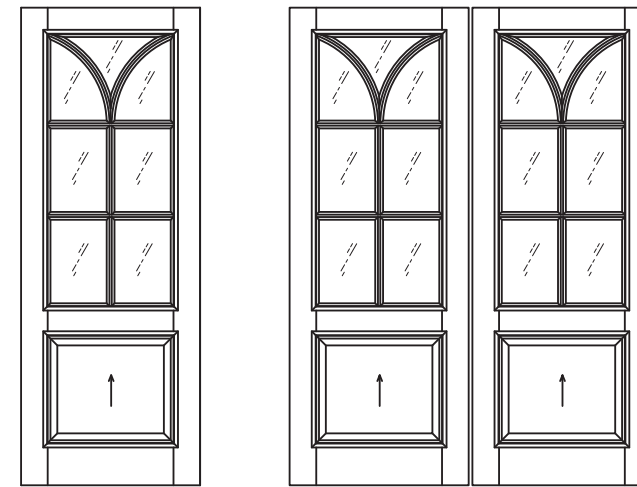
MANCHESTER COLLECTION



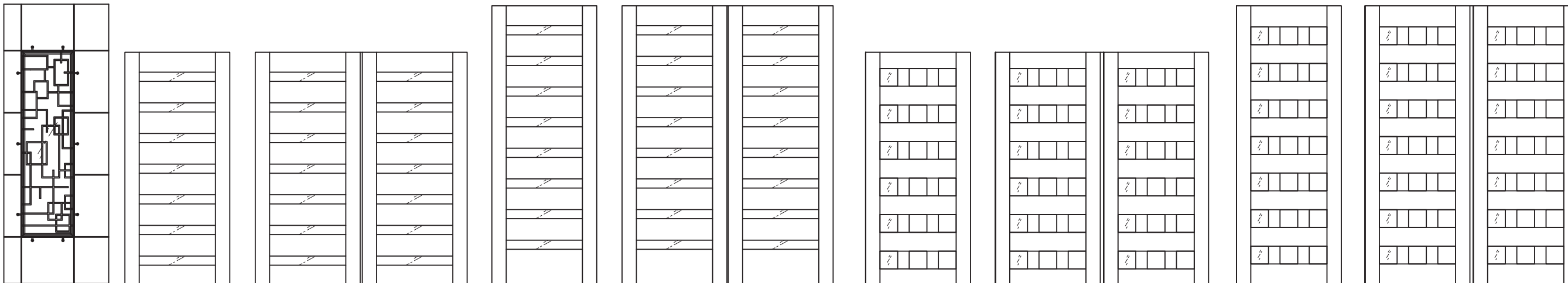
TRINITY COLLECTION



RENAISSANCE COLLECTION



MILAN COLLECTION



PROJECT #420-0601

DSA Master Crafted Doors
10681 World Trade Blvd
Raleigh, NC 27617

7/0 x 8/0 Double Full Lite/2 Panels
APPROVED CONFIGURATIONS

TITLE: PREPARED BY: DRAWN BY: RJA DATE: 2/7/17

SCALE: N.T.S.

REV: A

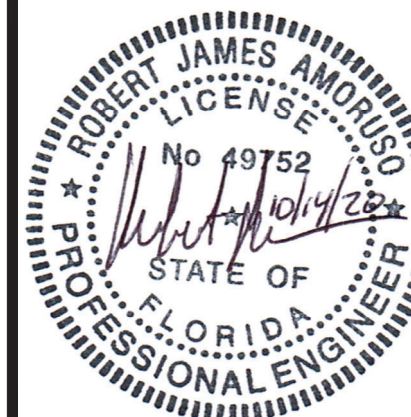
DRAWING NO: DSA0003

SHEET: 9 OF 10

REV: A DESCRIPTION: UPDATED TO CURRENT FBC DATE: 10/14/20

BY: RJA

Robert J. Amoruso, P.E.
Florida P.E. No. 49752

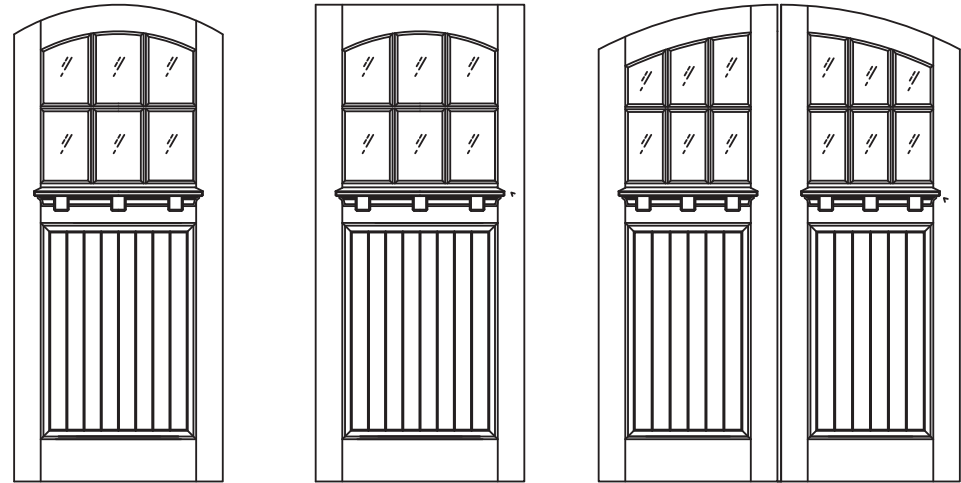


PTC PRODUCT DESIGN GROUP, LLC
LONGWOOD, FLORIDA 32752
FBPE C.A. NO. 29935
Phone: 321.690.1788
Fax: 321.690.1789
Email: info@ptc-corp.com

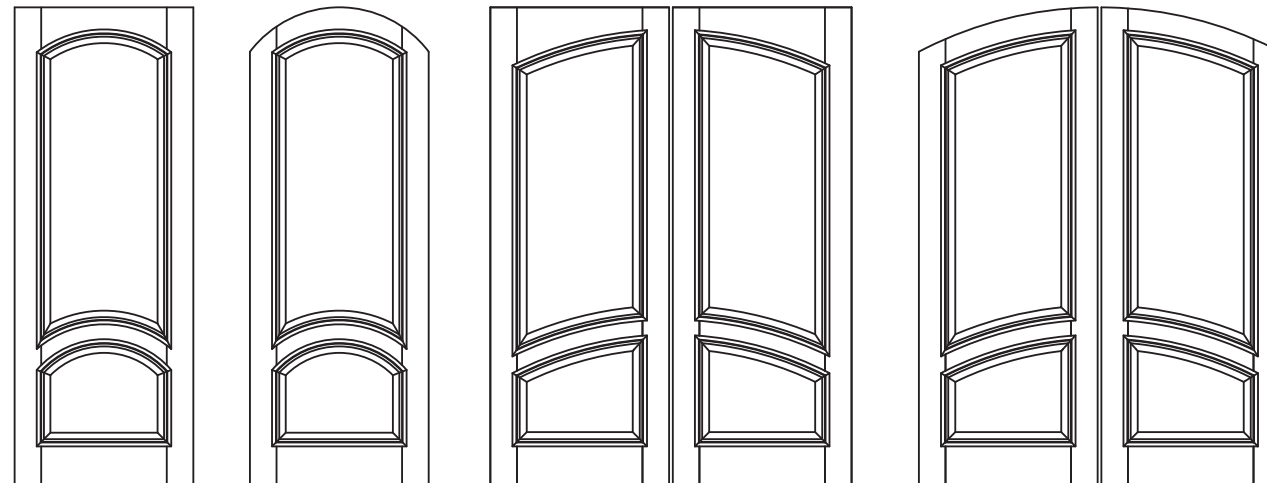
APPROVED CONFIGURATIONS

MAXIMUM FRAME, DOOR PANEL AND D.L.O. SIZES SHOWN ON SHEET 2 MUST BE MET.

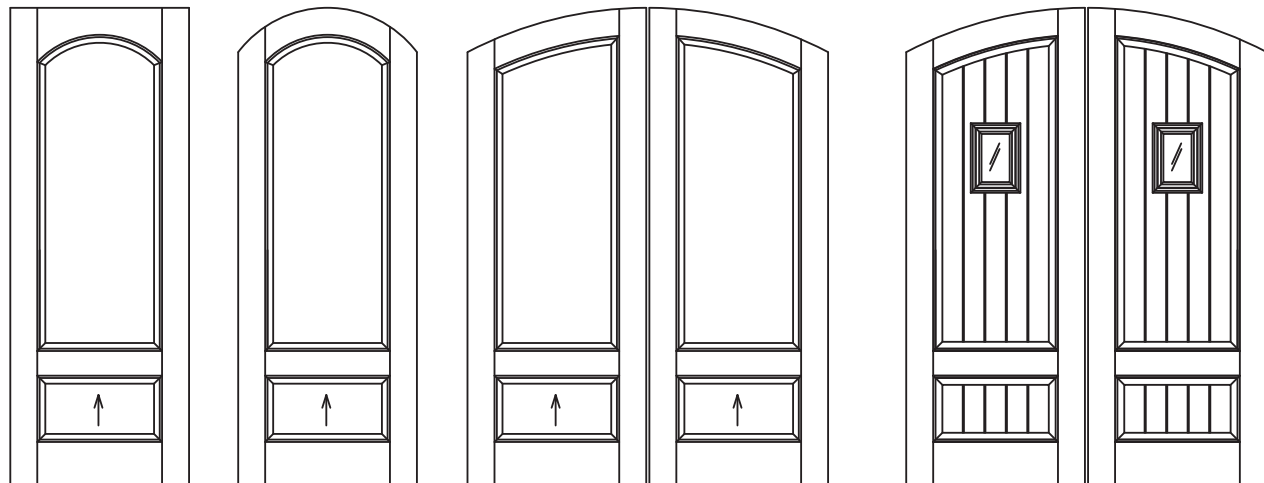
LINVILLE COLLECTION



ABERDEEN COLLECTION



TIFFANY COLLECTION



WAKEFIELD COLLECTION



PROJECT #420-0601

DSA Master Crafted Doors
10681 World Trade Blvd
Raleigh, NC 27617

7/0 x 8/0 Double Full Lite/2 Panels
APPROVED CONFIGURATIONS

PREPARED BY: PTC
DRAWN BY: RJA
SCALE: N.T.S.
REV: A
DATE: 2/7/17
DRAWING NO.: DSA0003
SHEET: 10 OF 10

PTC PRODUCT DESIGN GROUP, LLC
LONGWOOD, FLORIDA 32752
PHONE: 321.690.1788
FAX: 321.690.1789
EMAIL: info@ptc-corp.com

REV	DESCRIPTION	DATE	BY
A	UPDATED TO CURRENT FBC	10/14/20	RJA

Robert J. Amoruso, P.E.
Florida P.E. No. 49752

