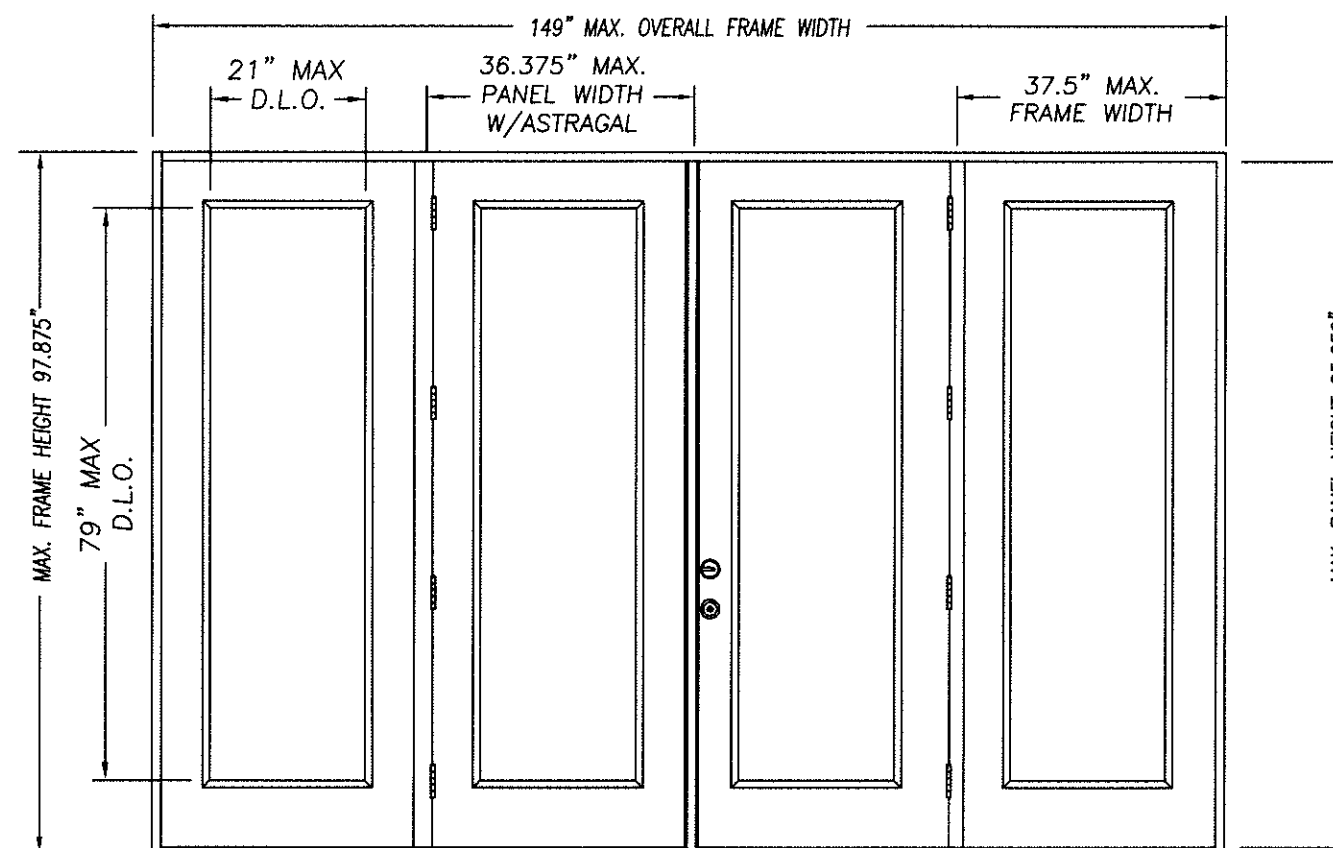




1. EVALUATED FOR USE IN LOCATIONS ADHERING TO THE FLORIDA BUILDING CODE AND WHERE PRESSURE REQUIREMENTS AS DETERMINED BY ASCE 7, MINIMUM DESIGN LOADS FOR BUILDINGS AND OTHER STRUCTURES, DOES NOT EXCEED THE DESIGN PRESSURES LISTED.
2. WHEN INSTALLED IN THE HIGH VELOCITY HURRICANE ZONE (HVHZ), HURRICANE PROTECTIVE SYSTEM (SHUTTERS) IS REQUIRED.
3. WHEN INSTALLED IN THE WIND-BORNE DEBRIS REGION, EXCLUDING THE HIGH VELOCITY HURRICANE ZONE (HVHZ), HURRICANE PROTECTIVE SYSTEM IS NOT REQUIRED.
4. POLYURETHANE CORE FLAME SPREAD INDEX OF 50 AND SMOKE DEVELOPED INDEX OF 60 PER ASTM E84.

6. PLASTICS TESTING OF WORLDWIDE COMPOSITE FRAME (WHERE USED):

* COMPARATIVE TENSILE STRENGTH AFTER WEATHERING
4500 HOURS XENON ARC METHOD 1



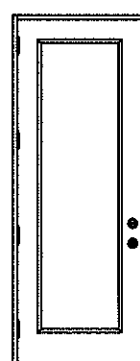
DOUBLE DOOR UNIT W/SIDELITES

Addendum to NAMI

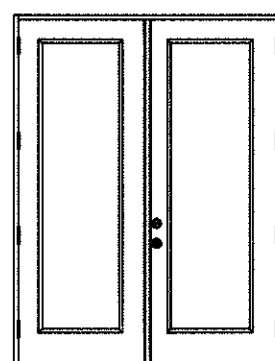
Certification No.: **NE013717**

Reviewed By

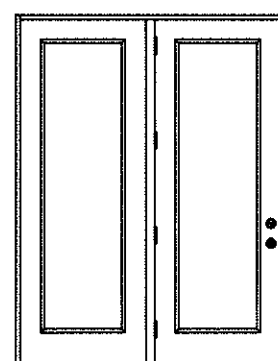
Date Reviewed: 5/12/13



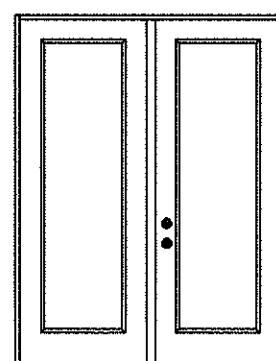
SINGLE DOOR UNIT



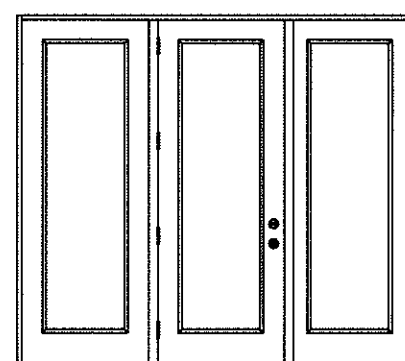
DOUBLE DOOR UNIT



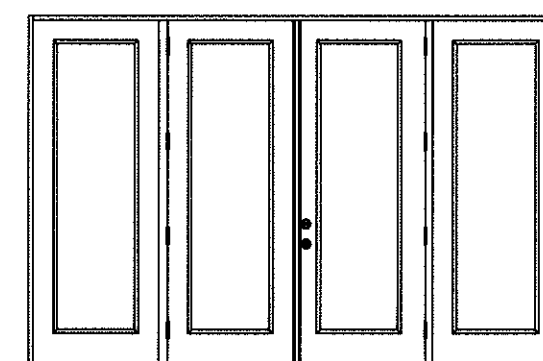
SINGLE DOOR UNIT
WITH SIDELITE



SINGLE DOOR UNIT
WITH SIDELITE



SINGLE DOOR UNIT W/SIDELITES



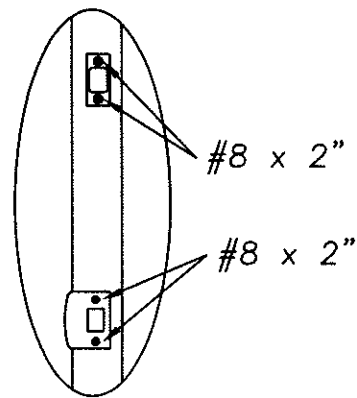
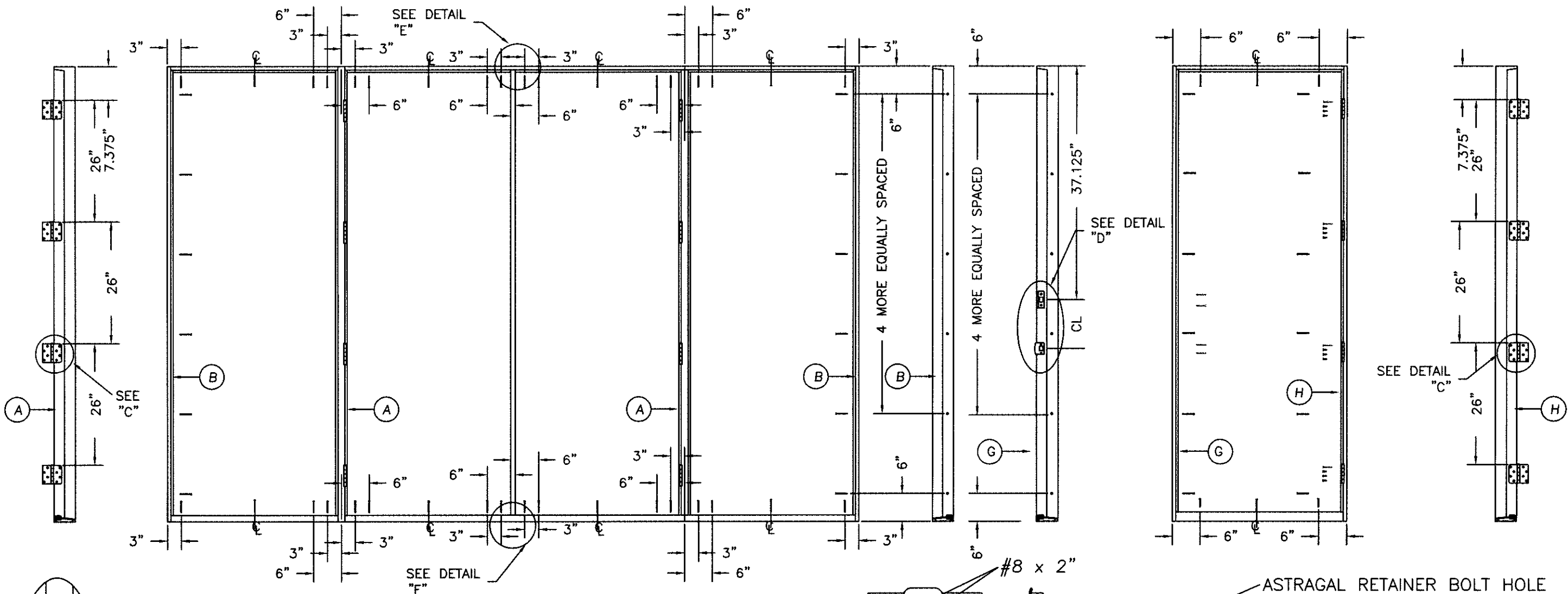
DOUBLE DOOR UNIT W/SIDELITES

TABLE OF CONTENTS	
SHEET #	DESCRIPTION
1	TYPICAL ELEVATIONS & GENERAL NOTES
2	ANCHORING LOCATIONS & DETAILS
3	ANCHORING LOCATIONS & DETAILS

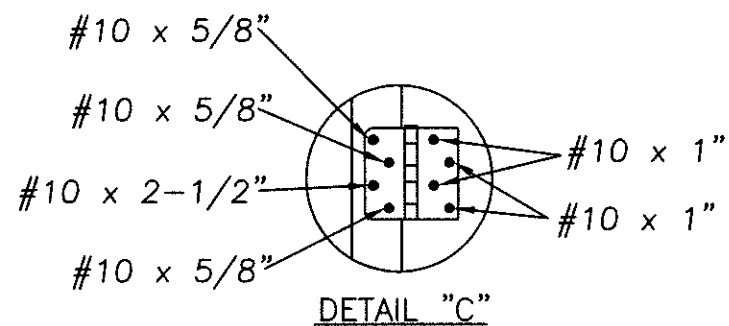
		DESIGN PRESSURE RATING		WHERE WATER INFILTRATION PERFORMANCE IS REQUIRED TO BE 15% OF DESIGN PRESSURE			
CONFIG	MAX WIDTH	INSWING	OUTSWING	INSWING	BUMPER O/S	Z-SERIES O/S	HIGH DAM O/S
X	37.5"	+40.0 / -45.0	+45.0 / -40.0	N/A	+25.0 / -25.0	+40.0 / -40.0	+45.0 / -40.0
XX	74"	+40.0 / -45.0	+45.0 / -40.0	N/A	+25.0 / -25.0	+40.0 / -40.0	+45.0 / -40.0
OX or XO	75"	+40.0 / -45.0	+45.0 / -40.0	N/A	+25.0 / -25.0	+40.0 / -40.0	+45.0 / -40.0
OXO	112.5"	+40.0 / -45.0	+45.0 / -40.0	N/A	+25.0 / -25.0	+40.0 / -40.0	+45.0 / -40.0
OXOX	149"	+40.0 / -45.0	+45.0 / -40.0	N/A	+25.0 / -25.0	+40.0 / -40.0	+45.0 / -40.0

Kurt 1 Bathy
KURT BALTHAZO
FLORIDA P.E.
#56533

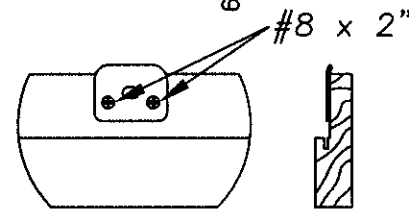
DATE: 4/26/17		PRODUCT:	
SCALE: N.T.S.		"EXTERIOR DOOR PRODUCT"	
DWG. BY: SWS		DOUBLE 8'0" GLAZED	
CHK. BY:		FIBERGLASS DOOR	
DRAWING NO.:		PART OR ASSEMBLY:	
DWG-MA-FLO196-1		TYPICAL ELEVATIONS	
SHEET 1 OF 3		& GENERAL NOTES	



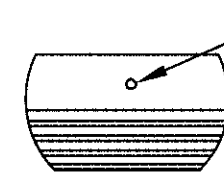
DETAIL "D"



DETAIL "C"

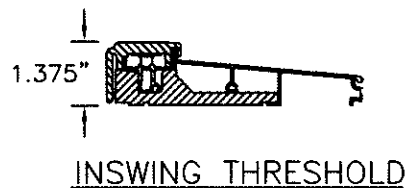


DETAIL "E" ASTRAGAL
ATTACH ASTRAGAL RETAINER BOLT
STRIKE PLATE TO FRAME
AS SHOWN.

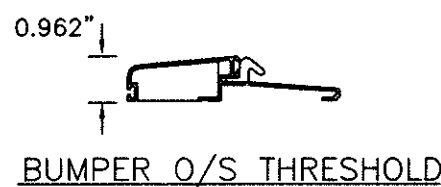


DETAIL "F" ASTRAGAL

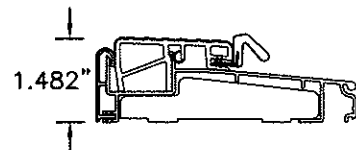
ASTRAGAL RETAINER BOLT HOLE
MUST BE DRILLED THROUGH
THE THRESHOLD & INTO THE
STRUCTURE DEEP ENOUGH
FOR A 1.375" THROW



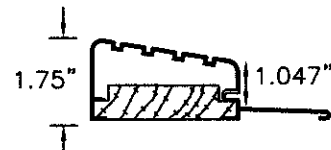
INSWING THRESHOLD



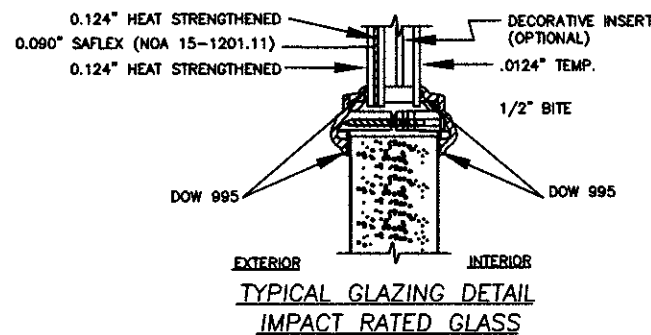
BUMPER O/S THRESHOLD



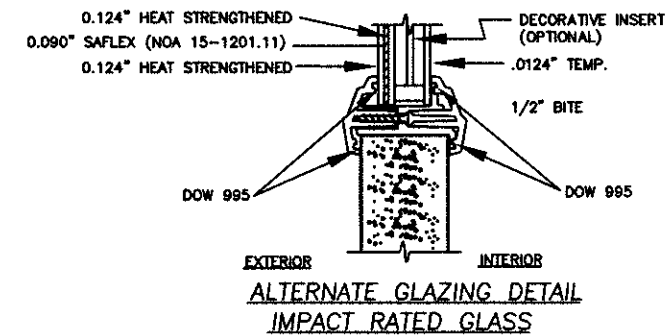
Z-SERIES O/S THRESHOLD



HIGH DAM O/S THRESHOLD



EXTERIOR INTERIOR
TYPICAL GLAZING DETAIL
IMPACT RATED GLASS



EXTERIOR INTERIOR
ALTERNATE GLAZING DETAIL
IMPACT RATED GLASS

MASONITE INTERNATIONAL CORP.
1955 POWIS ROAD
WEST CHICAGO, IL 60185

PRODUCT:
EXTERIOR DOOR PRODUCT
8'0" FIBERGLASS GLAZED
DOUBLE DOOR UNIT
PART OR ASSEMBLY:
ANCHORING LOCATIONS
& DETAILS

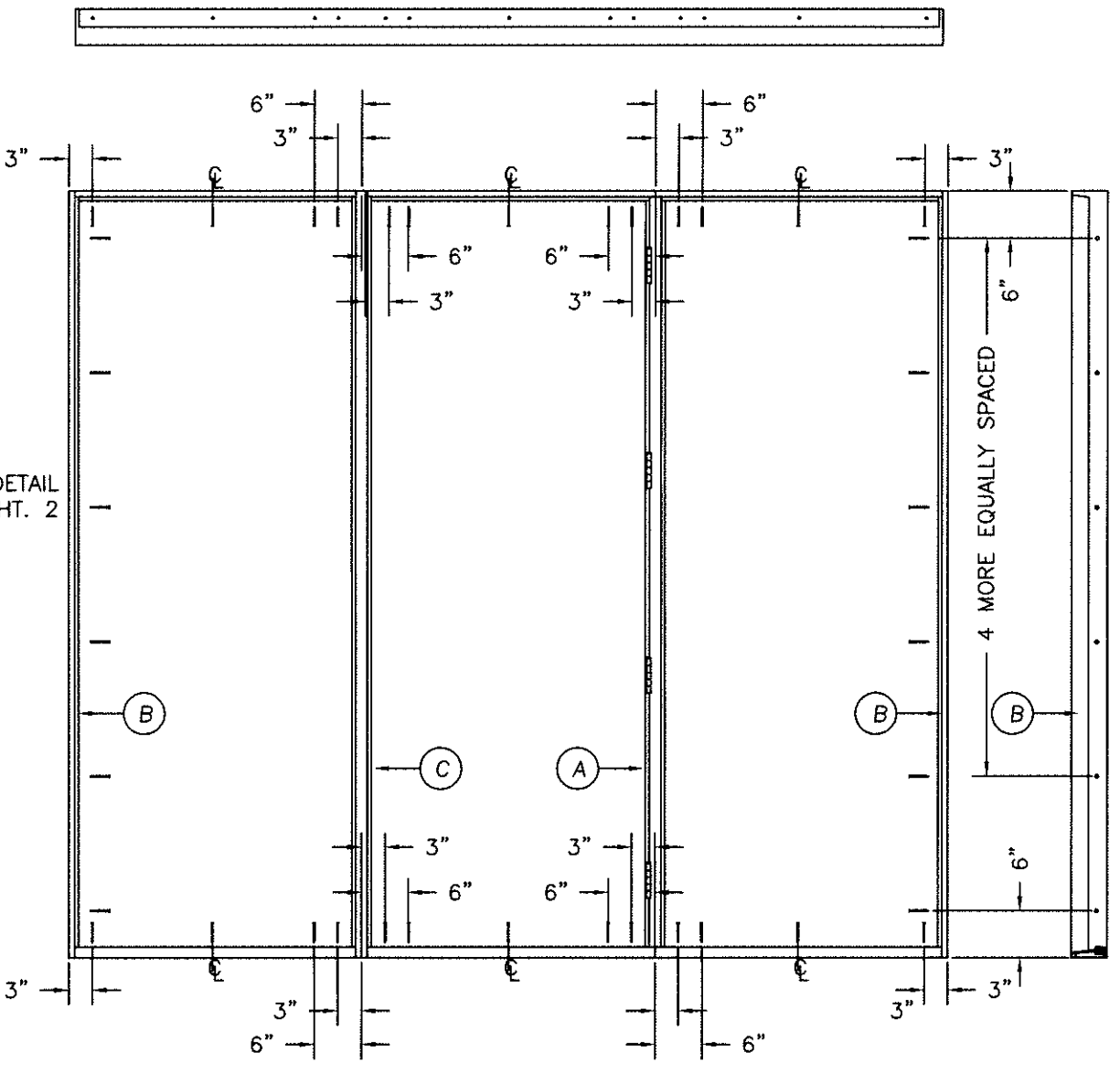
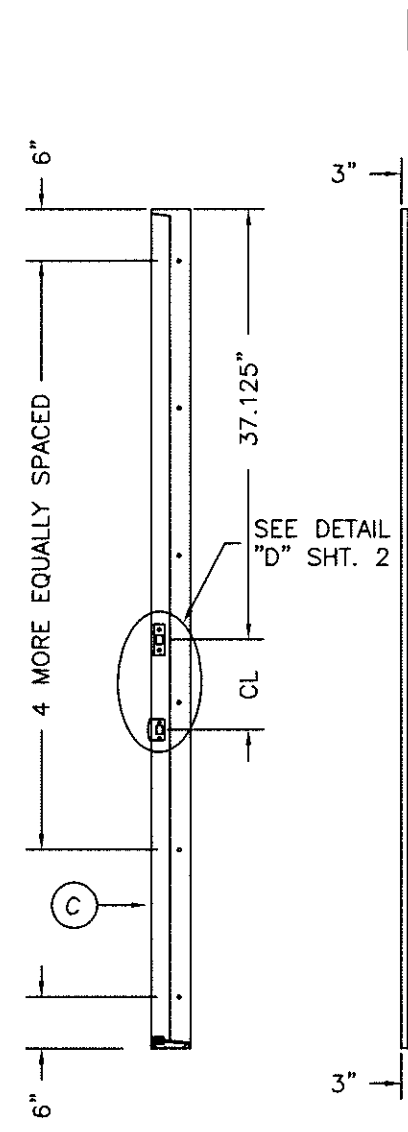
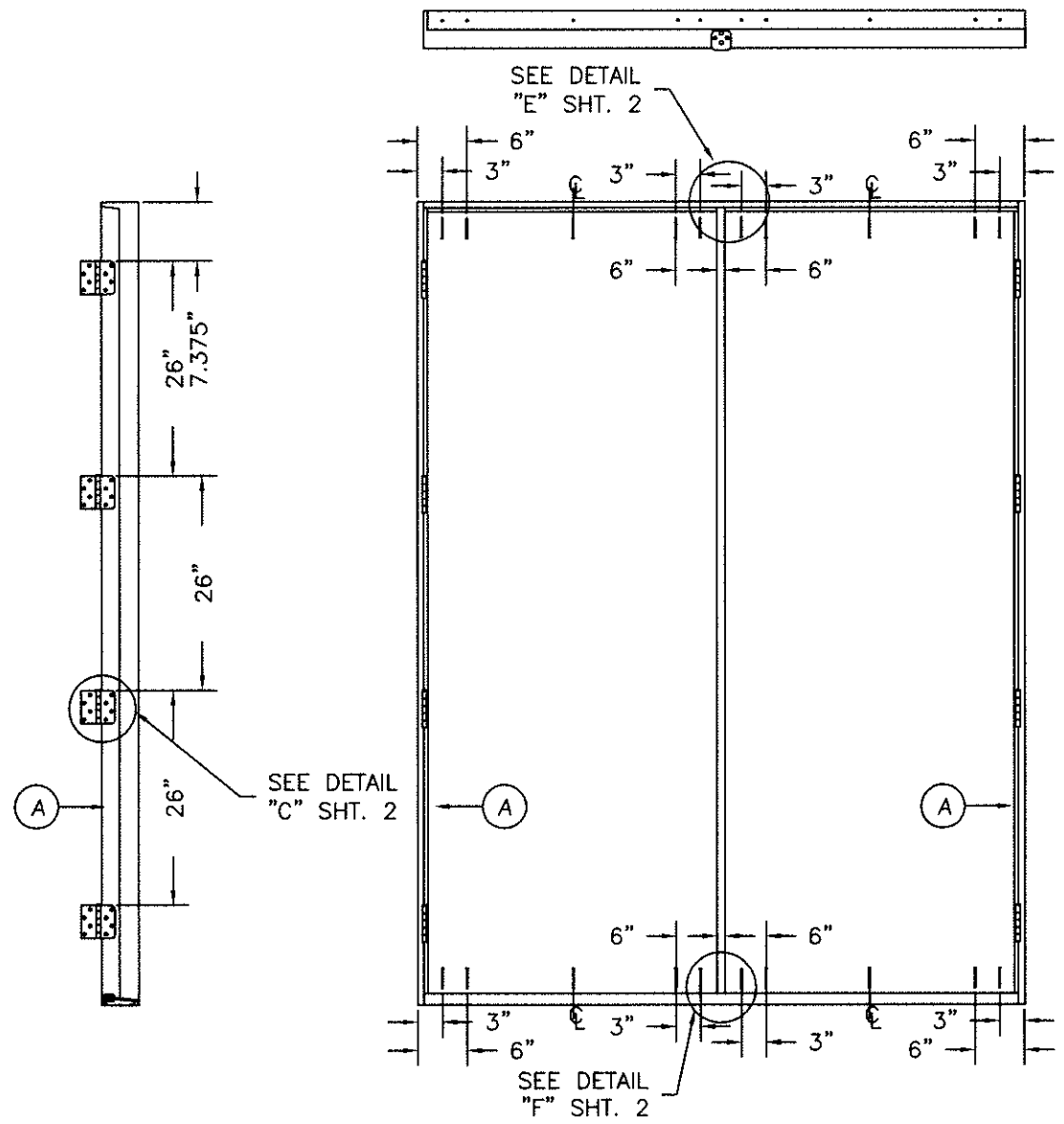
NO.	DATE	REVISIONS	BY

DATE: 4/26/17
SCALE: N.T.S.
DWG. BY: SWS
CHK. BY:
DRAWING NO.:
DWG-MA-FLO196-17
SHEET 2 OF 3

PRODUCT: "EXTERIOR DOOR PRODUCT"
8'0" FIBERGLASS GLAZED
DOUBLE DOOR UNIT
PART OR ASSEMBLY:
ANCHORING LOCATIONS
& DETAILS

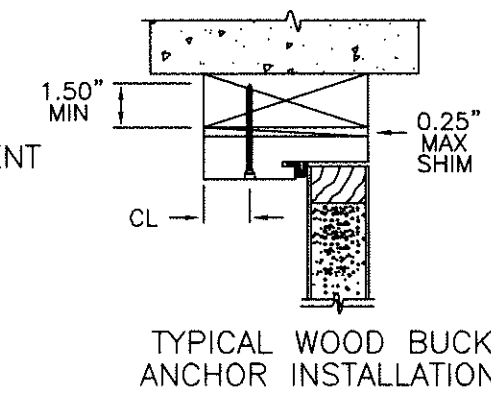
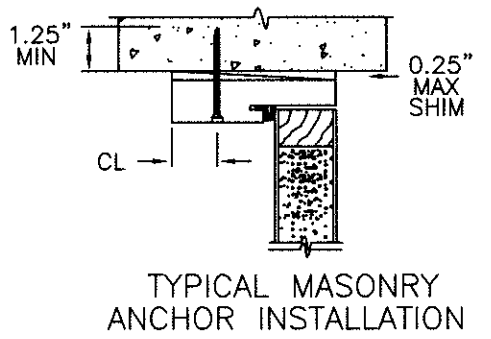
NO.	DATE	REVISIONS	BY

DATE: 4/26/17
SCALE: N.T.S.
DWG. BY: SWS
CHK. BY:
DRAWING NO.:
DWG-MA-FL0196-17
SHEET 3 OF 3



ATTACHMENT DETAIL

1. ANCHOR ANALYSIS FOR LOADING CONDITIONS PREPARED, SIGNED AND SEALED BY LUIS R. LOMAS, PE (FLORIDA #62514) WITH THE LOWEST (LEAST) FASTENER RATING FROM THE DIFFERENT FASTENERS BEING CONSIDERED FOR USE. JAMB, HEAD, AND THRESHOLD FASTENERS ANALYZED FOR THIS UNIT INCLUDE #10 WOOD SCREWS OR 1/4" TAPCONS. A PHYSICAL SHIM MUST BE PLACED IN SHIM SPACE AT EACH ANCHOR LOCATION. TAPCON EDGE DISTANCE MIN 2-1/2". WOOD SCREW EDGE DISTANCE MIN 3/4".
2. THE WOOD SCREW SINGLE SHEAR DESIGN VALUES COME FROM ANSI/AF&PA NDA FOR SOUTHERN PINE LUMBER AND ACHIEVEMENT OF 1-1/2" MINIMUM EMBEDMENT. THE TAPCON MUST ACHIEVE MINIMUM EMBEDMENT OF 1-1/4".
3. WOOD BUCKS BY OTHERS MUST BE ANCHORED PROPERLY TO TRANSFER LOADS TO STRUCTURE.
4. MINIMUM DESIGN VALUE STRENGTH OF ANCHORS 155 LBS.



HARDWARE SCHEDULE

1. KWIKSET SERIES 400 GRADE 3 CYLINDRICAL LATCH AND SERIES 980 GRADE 1 DEADLOCK HARDWARE TO BE INSTALLED AT 10-1/2" CENTERLINE.
2. 4" X 4" FULL MORTISE BUTT HINGES.

