



FIBERGLASS DOOR UNIT
8'-0" DOUBLE DOOR WITH / WITHOUT SIDELITES

GENERAL NOTES

- EVALUATED FOR USE IN LOCATIONS ADHERING TO THE FLORIDA BUILDING CODE AND WHERE PRESSURE REQUIREMENTS AS DETERMINED BY ASCE 7, MINIMUM DESIGN LOADS FOR BUILDINGS AND OTHER STRUCTURES, DOES NOT EXCEED THE DESIGN PRESSURES LISTED.
- WHEN INSTALLED IN THE HIGH VELOCITY HURRICANE ZONE (HVHZ), HURRICANE PROTECTIVE SYSTEM (SHUTTERS) IS REQUIRED.
- WHEN INSTALLED IN THE WIND-BORNE DEBRIS REGION, HURRICANE PROTECTIVE SYSTEM (SHUTTERS) IS REQUIRED.
- POLYURETHANE CORE FLAME SPREAD INDEX OF 50 AND SMOKE DEVELOPED INDEX OF 60 PER ASTM E84.

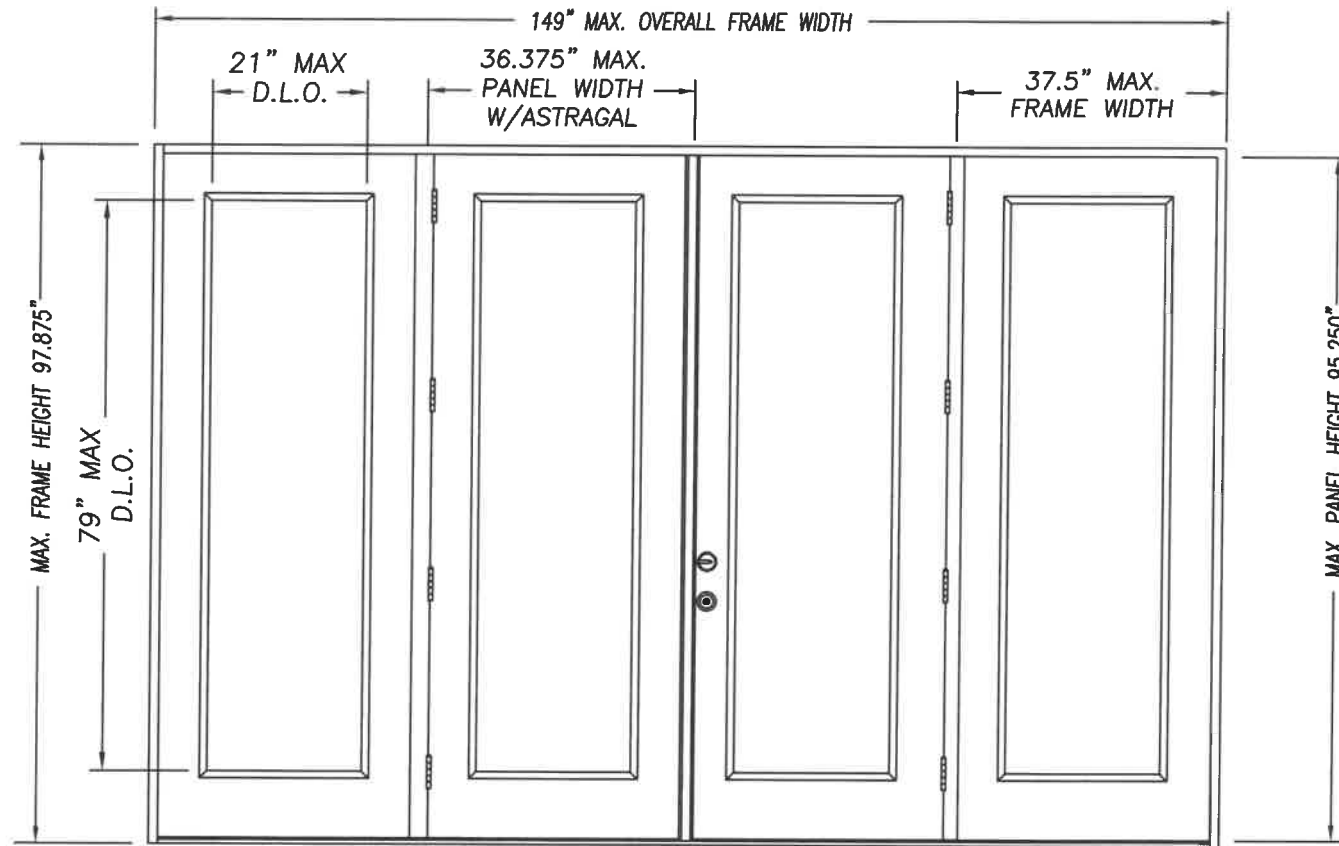
5. PLASTICS TESTING:

TEST DESCRIPTION	DESIGNATION	FACING	LITE FRAME
SELF IGNITION TEMP	ASTM D1929	752 °F > 650 °F	842 °F > 650 °F
RATE OF BURNING	ASTM D635	0.56 IN/MIN	1.28 IN/MIN
SMOKE DENSITY	ASTM D2843	53.4%	70.2%
TENSILE STRENGTH*	ASTM D638	3.2% DIFF	1.8% DIFF

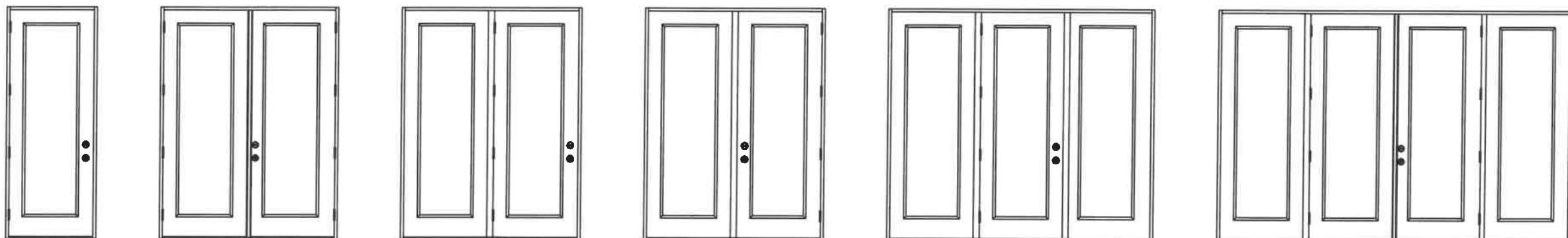
6. PLASTICS TESTING OF WORLDWIDE COMPOSITE FRAME (WHERE USED):

TEST DESCRIPTION	DESIGNATION	RESULT
SELF IGNITION TEMP	ASTM D1929	779 °F > 650 °F
RATE OF BURNING	ASTM D635	0.0 IN/MIN
SMOKE DENSITY	ASTM D2843	39.0%
TENSILE STRENGTH*	ASTM D638	3.6% DIFF

* COMPARATIVE TENSILE STRENGTH AFTER WEATHERING
 4500 HOURS XENON ARC METHOD 1



DOUBLE DOOR UNIT W/SIDELITES



SINGLE DOOR UNIT DOUBLE DOOR UNIT SINGLE DOOR UNIT WITH SIDELITE SINGLE DOOR UNIT WITH SIDELITE SINGLE DOOR UNIT W/SIDELITES DOUBLE DOOR UNIT W/SIDELITES

Addendum to NAMI
 Certification No.: NT013717
 Reviewed By: [Signature]
 Date Reviewed: 11/28/17

CONFIG	MAX WIDTH	DESIGN PRESSURE RATING		WHERE WATER INFILTRATION PERFORMANCE IS REQUIRED TO BE 15% OF DESIGN PRESSURE					
		INSWING	OUTSWING	INSWING	BUMPER O/S	Z-SERIES O/S	T4 O/S	HIGH DAM O/S	
X	37.5"	+40.0 / -40.0	+40.0 / -40.0	N/A	+25.0 / -25.0	+40.0 / -40.0	+40.0 / -40.0	+40.0 / -40.0	+40.0 / -40.0
XX	74"	+40.0 / -40.0	+40.0 / -40.0	N/A	+25.0 / -25.0	+40.0 / -40.0	+40.0 / -40.0	+40.0 / -40.0	+40.0 / -40.0
OX or XO	75"	+40.0 / -40.0	+40.0 / -40.0	N/A	+25.0 / -25.0	+40.0 / -40.0	+40.0 / -40.0	+40.0 / -40.0	+40.0 / -40.0
OXO	112.5"	+40.0 / -40.0	+40.0 / -40.0	N/A	+25.0 / -25.0	+40.0 / -40.0	+40.0 / -40.0	+40.0 / -40.0	+40.0 / -40.0
OXXO	149"	+40.0 / -40.0	+40.0 / -40.0	N/A	+25.0 / -25.0	+40.0 / -40.0	+40.0 / -40.0	+40.0 / -40.0	+40.0 / -40.0

SHEET #	DESCRIPTION
1	TYPICAL ELEVATIONS & GENERAL NOTES
2	ANCHORING LOCATIONS & DETAILS
3	ANCHORING LOCATIONS & DETAILS
4	ANCHORING LOCATIONS & DETAILS

[Signature]
KURT BALTHAZOR
 FLORIDA P.E.
 #56533

MASONITE INTERNATIONAL CORP.
 1955 POWIS ROAD
 WEST CHICAGO, IL 60185

PRODUCT: "EXTERIOR DOOR PRODUCT" DOUBLE 8'0" GLAZED FIBERGLASS DOOR

PART OR ASSEMBLY: TYPICAL ELEVATIONS & GENERAL NOTES

DATE: 4/26/17

SCALE: N.T.S.

DWG. BY: SWS

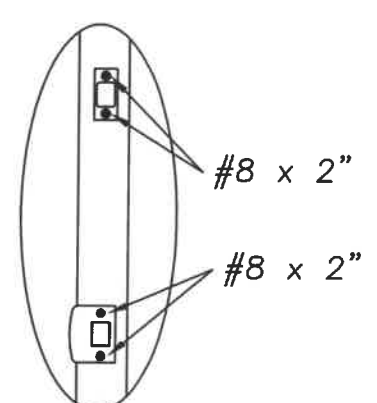
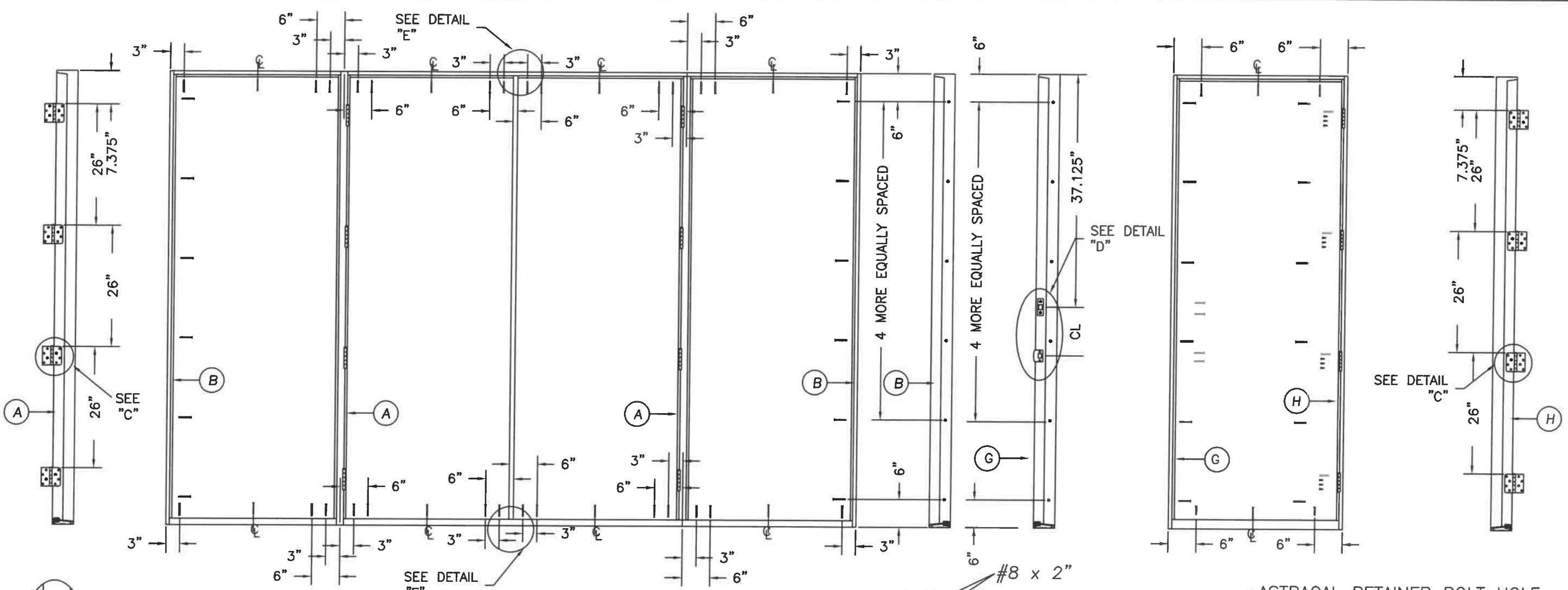
CHK. BY:

DRAWING NO.: DWG-MA-FL0190-17

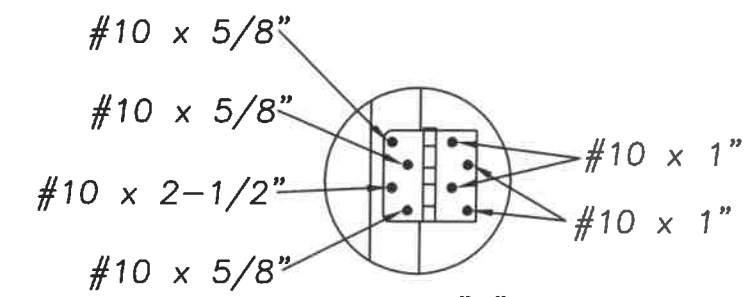
SHEET 1 OF 4

REVISIONS

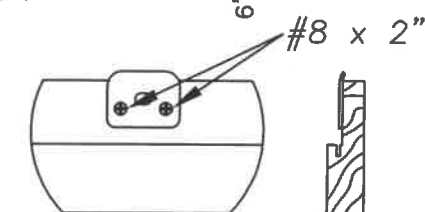
NO.	DATE	UPDATED DATA	BY
A	11/27/17		SWS



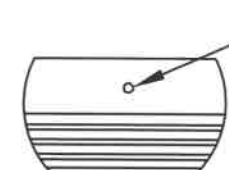
DETAIL "D"



DETAIL "C"



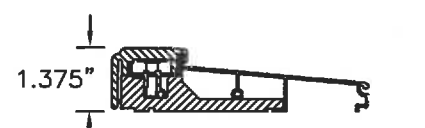
DETAIL "E" ASTRAGAL
ATTACH ASTRAGAL RETAINER BOLT STRIKE PLATE TO FRAME AS SHOWN.



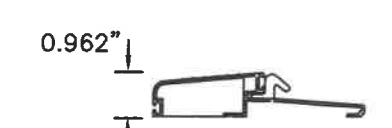
DETAIL "F" ASTRAGAL

ASTRAGAL RETAINER BOLT HOLE MUST BE DRILLED THROUGH THE THRESHOLD & INTO THE STRUCTURE DEEP ENOUGH FOR A 1.375" THROW

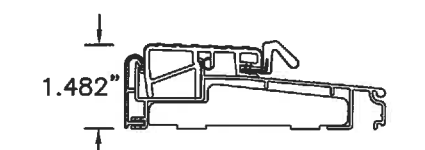
Addendum to NAMI
 Certification No.: NT013717
 Reviewed By: [Signature]
 Date Reviewed: 11/28/17



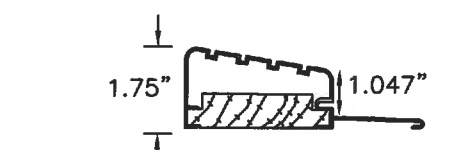
INSWING THRESHOLD



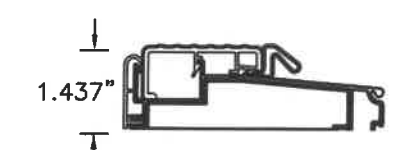
BUMPER O/S THRESHOLD



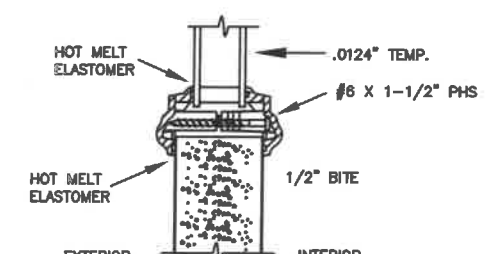
Z-SERIES O/S THRESHOLD



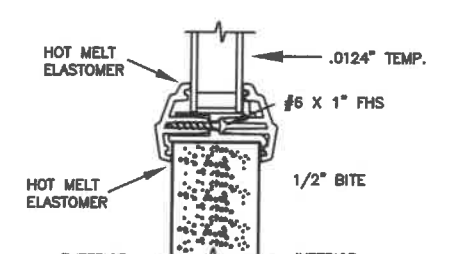
HIGH DAM O/S THRESHOLD



T4 O/S THRESHOLD



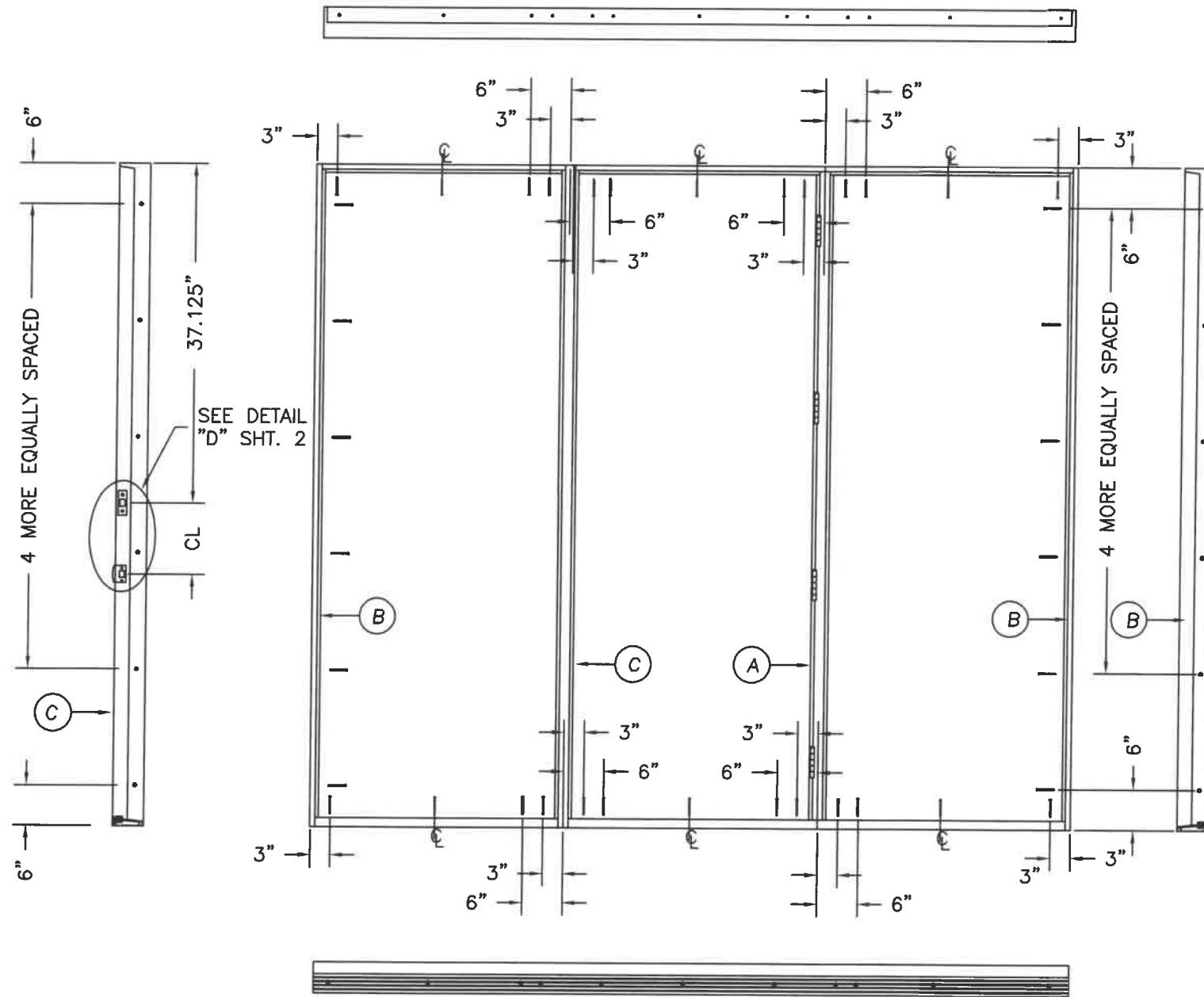
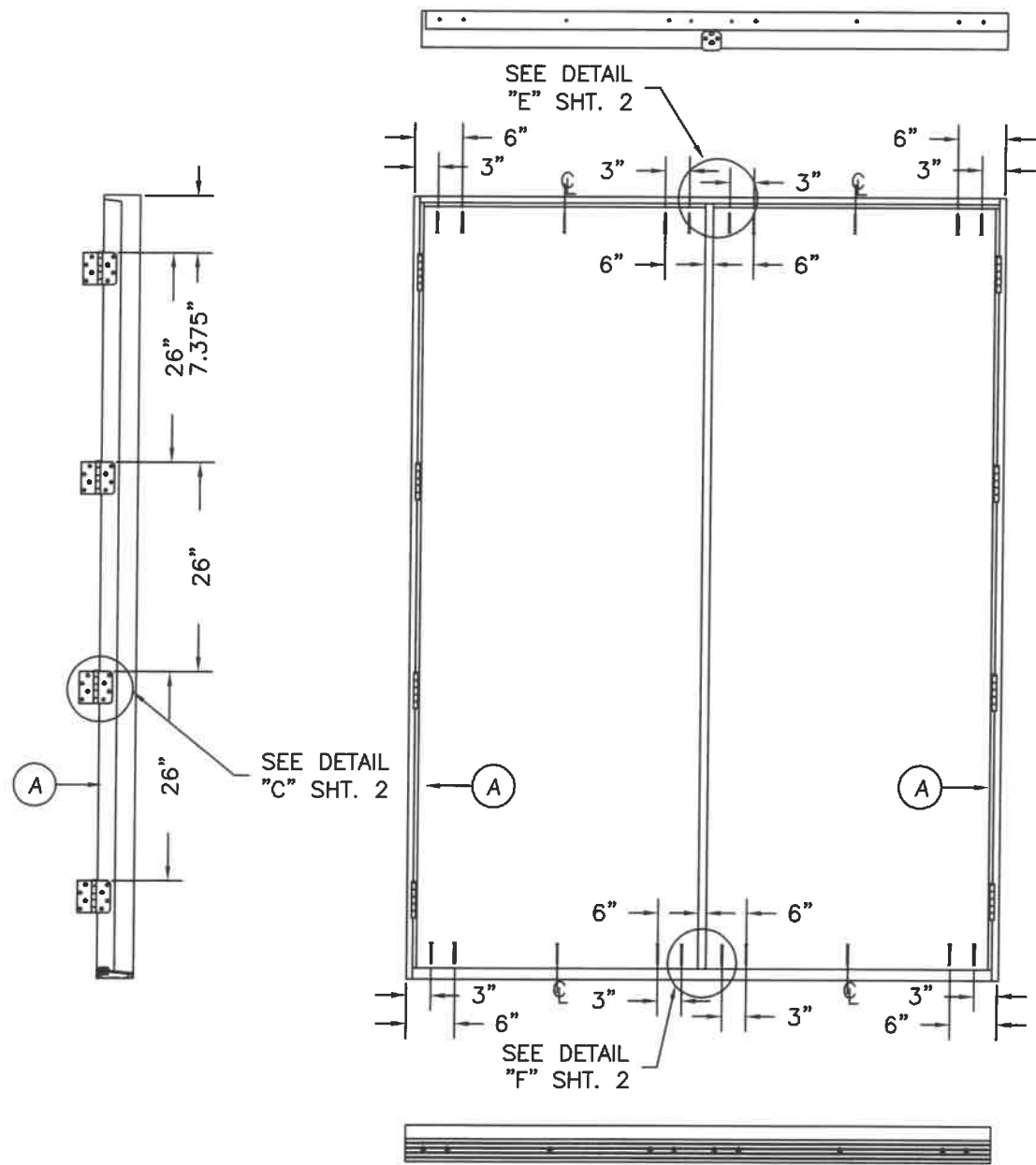
TYPICAL GLAZING DETAIL
NON-IMPACT GLASS



ALTERNATE GLAZING DETAIL
NON-IMPACT GLASS

PRODUCT:		"EXTERIOR DOOR PRODUCT" 8'0" FIBERGLASS GLAZED DOUBLE DOOR UNIT	
PART OR ASSEMBLY:		ANCHORING LOCATIONS & DETAILS	
NO.	DATE	UPDATED DATA	REVISIONS
A	11/27/17		SWS BY
DATE: 4/26/17			
SCALE: N.T.S.			
DWG. BY: SWS			
CHK. BY:			
DRAWING NO.:			
DWG-MA-FL0190-17			
SHEET 2 OF 4			

MASONITE INTERNATIONAL CORP.
 1955 POWIS ROAD
 WEST CHICAGO, IL 60185



Addendum to NAMI

Certification No.: NT013717
 Reviewed By: [Signature]
 Date Reviewed: 11/28/17

PRODUCT:		"EXTERIOR DOOR PRODUCT" 8'0" FIBERGLASS GLAZED DOUBLE DOOR UNIT	
PART OR ASSEMBLY:		ANCHORING LOCATIONS & DETAILS	
NO.	DATE	UPDATED DATA	SWS BY
A	11/27/17		
REVISIONS			
DATE: 4/26/17			
SCALE: N.T.S.			
DWG. BY: SWS			
CHK. BY:			
DRAWING NO.:			
DWG-MA-FL0190-17			
SHEET 3 OF 4			

MASONITE INTERNATIONAL CORP.
 1955 POWIS RD.
 WEST CHICAGO, IL 60185

