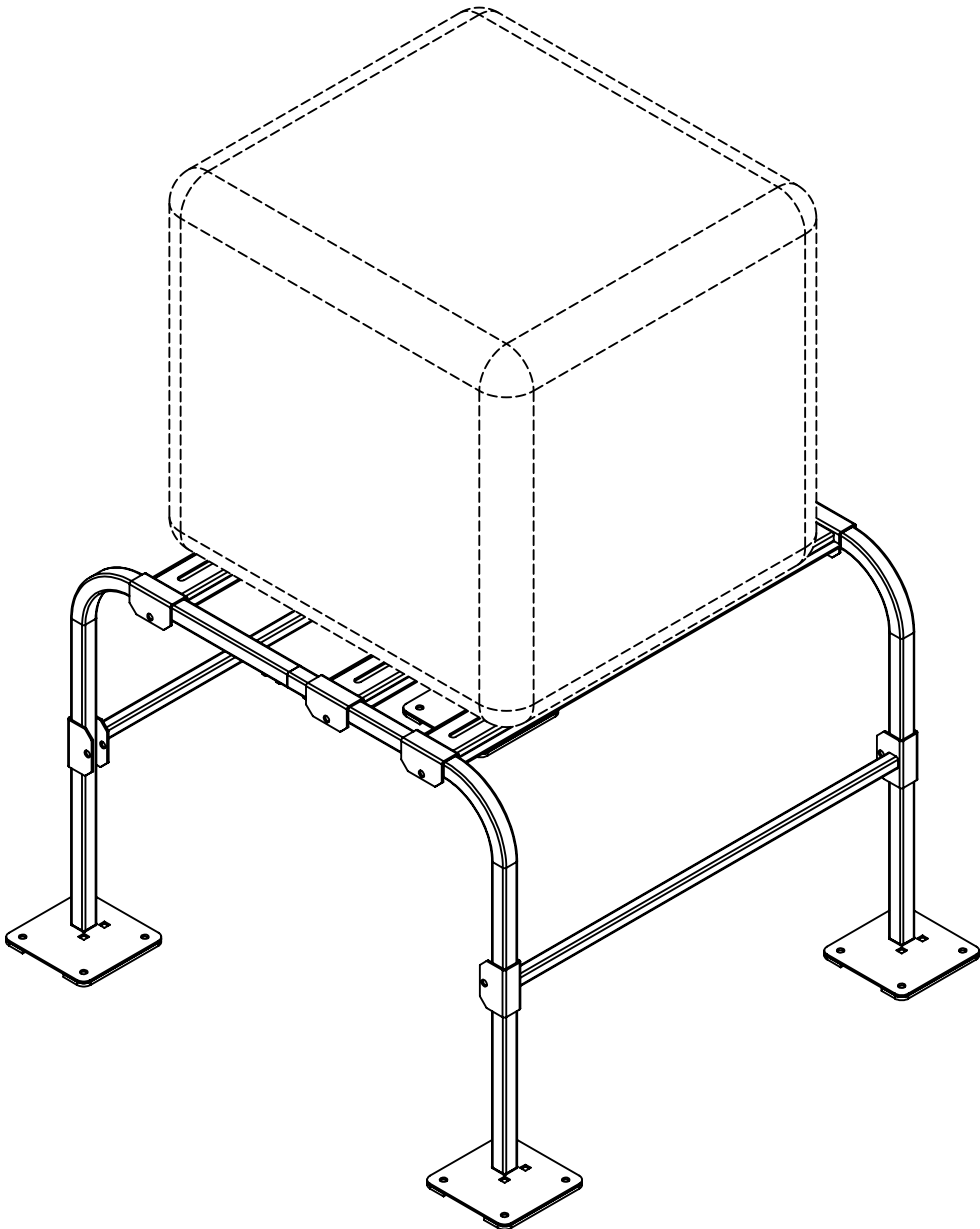


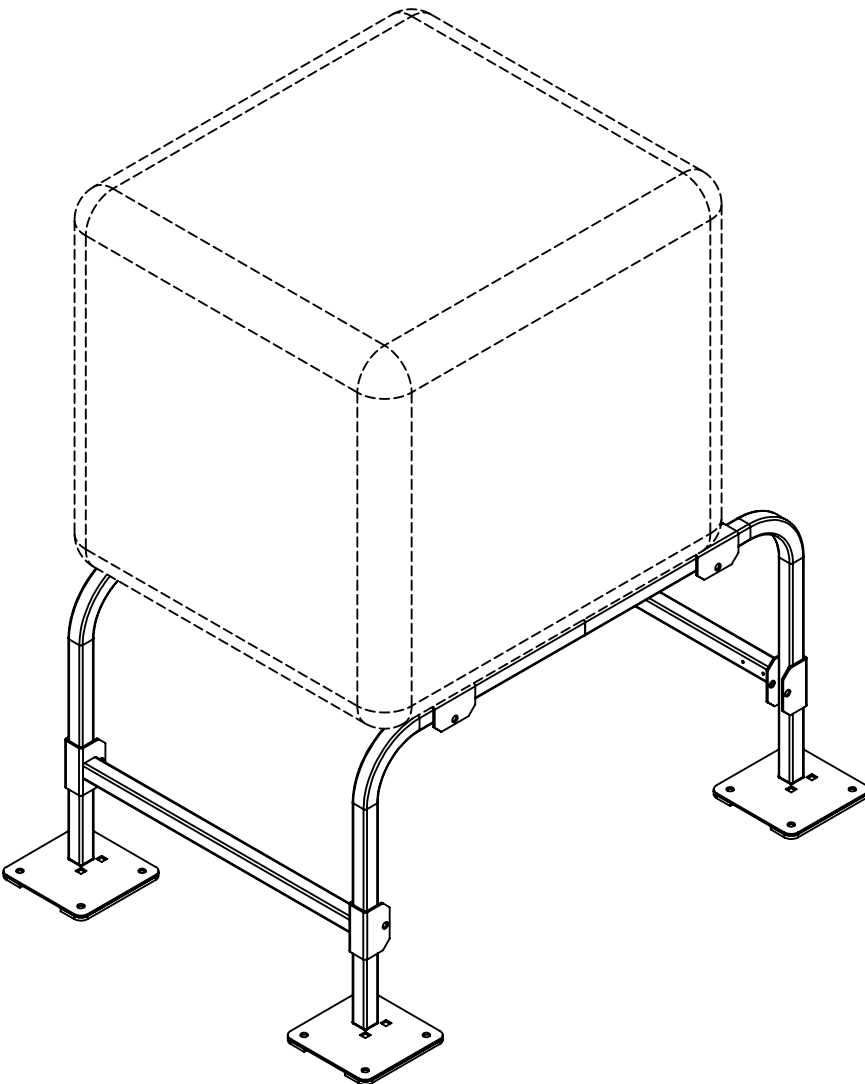


QUICK SLING  
INSTRUCTION SETS

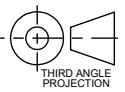
MINI-SPLIT  
STANDS



QUICK  
STANDS



|  |                     |
|--|---------------------|
| UNLESS OTHERWISE SPECIFIED:            |                     |
| DIMENSIONS ARE IN INCHES [MILLIMETERS] |                     |
| TOLERANCES ARE: ANGLES $\pm 1.0^\circ$ |                     |
| FRACTIONAL SIZES X/Y $\pm 1/64$        |                     |
| INCHES                                 | [MILLIMETERS]       |
| X = $\pm 0.1$                          | [X = $\pm 2.5$ ]    |
| .XX = $\pm 0.01$                       | [.X = $\pm 1.3$ ]   |
| .XXX = $\pm 0.005$                     | [.XX = $\pm 0.13$ ] |



|  |                     |              |
|--|---------------------|--------------|
| CONFIDENTIAL - PROPRIETARY - DO NOT COPY<br>THE INFORMATION SET FORTH IN THIS DOCUMENT AND RELATED INFORMATION IS THE CONFIDENTIAL PROPERTY OF DIVERSiTECH CORPORATION, AND IS NOT TO BE COPIED OR REPRODUCED OR DISTRIBUTED IN ANY FORM WITHOUT PRIOR WRITTEN PERMISSION FROM DIVERSiTECH CORPORATION.<br>DO NOT SCALE DRAWING<br>DESCRIPTION | ASSEMBLY: QSMS3001  | WEIGHT       |
|  | DWG. NO. FL-44215.3 | GMS.         |
|  |                     | REV. 1       |
|  |                     | SHEET 1 OF 6 |

4 3 2 1

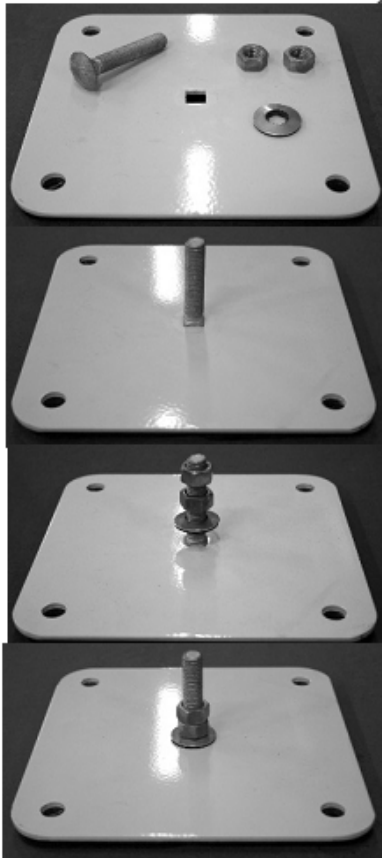
**QUICK-SLING®**

by **DIVERSiTECH®**

QSMS2400

U.S. Patent No. 8,827,232 B2

*\*Please adhere to all local laws and building codes.*

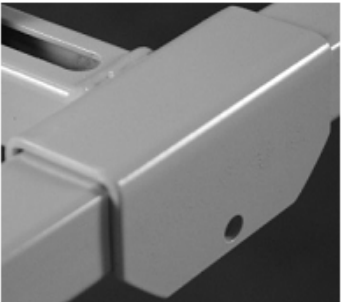


1. Insert 3/8"-16x2" Carriage Bolt through bottom of foot.

2. Add one 3/8" bonded washer and two 3/8" hex nuts.

3. Screw on the adjustment U-Bar until foot is locked in place.

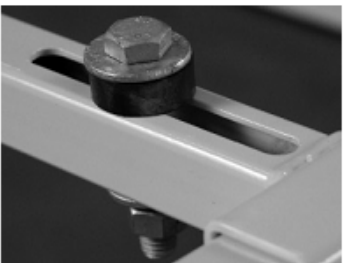
4. Remove Hex Bolts and washers from the adjustment U-Bars to adjust to your desired width (Adjusts in 1" increments).



5. Attach arms to completed U-Bars. Insert one 3/8"-16 x 1 3/4" Hex Bolt, 3/8" Split Washer and 3/8" nut to hole on face of arm.



6. Attach the two stability arms to the sides of the stand. Insert one 3/8"-16 x 1 3/4" Hex Bolt, 3/8" Split Washer and 3/8" nut to hole on face of arm.



7. Mount unit to stand and insert in slot one 3/8"-16 x 1 1/2" bolt, two 3/8" galvanized washers, one rubber washer, one 3/8" split washer and one 3/8" nut.



8. Bolt unit to foundation (Hardware not included).

*\*As of 1/1/2015 Quick-Sling offers a 2-year warranty on steel & workmanship; Quick-Sling products are coated in accordance with ASTM D3451-06.*

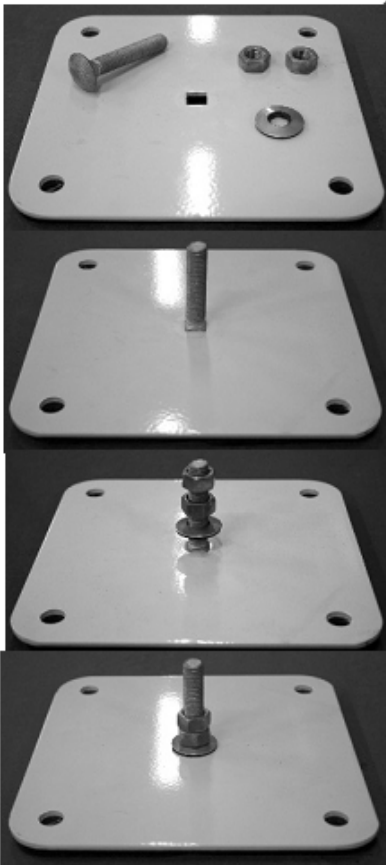
UNLESS OTHERWISE SPECIFIED:  
DIMENSIONS ARE IN INCHES [MILLIMETERS]  
TOLERANCES ARE: ANGLES ±1.0°  
FRACTIONAL SIZES X/Y ±1/64

| INCHES        | [MILLIMETERS] |
|---------------|---------------|
| .X = ±0.1     | [X = ±2.5]    |
| .XX = ±0.01   | [.X = ±1.3]   |
| .XXX = ±0.005 | [.XX = ±0.13] |

THIRD ANGLE PROJECTION

**DIVERSiTECH®**

|   |                     |              |
|---|---------------------|--------------|
| CONFIDENTIAL - PROPRIETARY - DO NOT COPY<br>THE INFORMATION SET FORTH IN THIS DOCUMENT AND RELATED INFORMATION IS THE CONFIDENTIAL PROPERTY OF DIVERSiTECH CORPORATION, AND IS NOT TO BE COPIED OR REPRODUCED OR DISTRIBUTED IN ANY FORM WITHOUT PRIOR WRITTEN PERMISSION FROM DIVERSiTECH CORPORATION.<br>DO NOT SCALE DRAWING | ASSEMBLY: QSMS3001  | WEIGHT       |
|   | DWG. NO. FL-44215.3 | GMS.         |
|   |                     | REV. 1       |
|   |                     | SHEET 2 OF 6 |



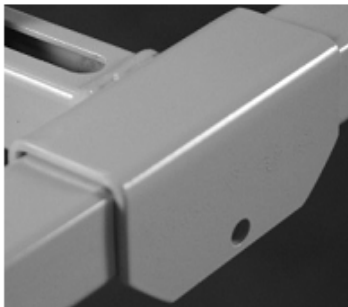
1. Insert 3/8"-16x2" Carriage Bolt through bottom of foot.

2. Add one 3/8" Bonded Washer and two 3/8" Hex Nuts.

3. Screw on the adjustment U-Bar until foot is locked in place.



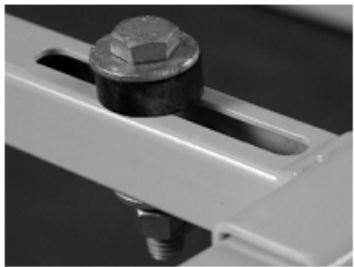
4. Remove Hex Bolts and Washers from the adjustment U-Bars to adjust to your desired width (Adjusts in 1" increments).



5. Attach arms to completed U-Bars. Insert one 3/8"-16 x 1 3/4" Hex Bolt, 3/8" Split Washer and 3/8" Nut to hole on face of arm.



6. Attach the two stability arms to the sides of the stand. Insert one 3/8"-16 x 1 3/4" Hex Bolt, 3/8" Split Washer and 3/8" Nut to hole on face of arm.



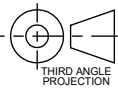
7. Mount unit to stand and insert in slot one 3/8"-16 x 1 1/2" Bolt, two 3/8" Galvanized Washers, one Rubber Washer, one 3/8" Split Washer and one 3/8" Nut.



8. Bolt unit to foundation (Hardware not included).

\*As of 1/1/2015 Quick-Sling offers a 2-year warranty on steel & workmanship; Quick-Sling products are coated in accordance with ASTM D3451-06.

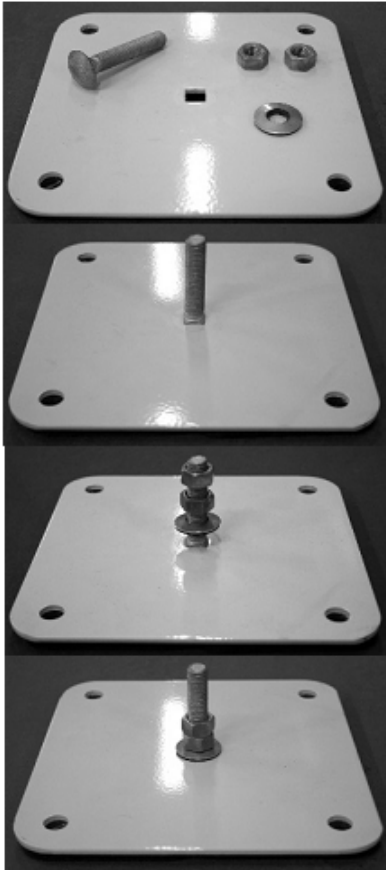
|  |               |
|--|---------------|
| UNLESS OTHERWISE SPECIFIED:            |               |
| DIMENSIONS ARE IN INCHES [MILLIMETERS] |               |
| TOLERANCES ARE: ANGLES ±1.0°           |               |
| FRACTIONAL SIZES X/Y ±1/64             |               |
| INCHES                                 | [MILLIMETERS] |
| .X = ±0.1                              | [X = ±2.5]    |
| .XX = ±0.01                            | [X = ±1.3]    |
| .XXX = ±0.005                          | [X = ±0.13]   |



|   |                     |              |
|---|---------------------|--------------|
| CONFIDENTIAL - PROPRIETARY - DO NOT COPY<br>THE INFORMATION SET FORTH IN THIS DOCUMENT AND RELATED INFORMATION IS THE CONFIDENTIAL PROPERTY OF DIVERSiTECH CORPORATION, AND IS NOT TO BE COPIED OR REPRODUCED OR DISTRIBUTED IN ANY FORM WITHOUT PRIOR WRITTEN PERMISSION FROM DIVERSiTECH CORPORATION.<br>DO NOT SCALE DRAWING | ASSEMBLY: QSMS3001  | WEIGHT       |
|   | DWG. NO. FL-44215.3 | GMS.         |
|   |                     | REV. 1       |
|   |                     | SHEET 3 OF 6 |

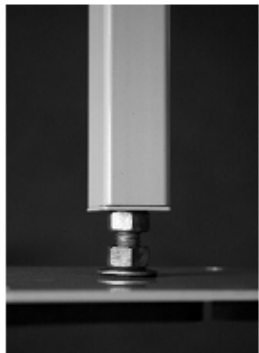


QSMS2402



1. Insert 3/8"-16x2" Carriage Bolt through bottom of foot.

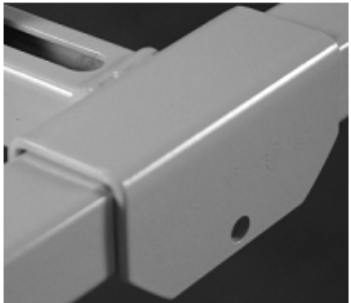
2. Add one 3/8" bonded washer and two 3/8" hex nuts.



3. Screw on the adjustment U-Bar until foot is locked in place.



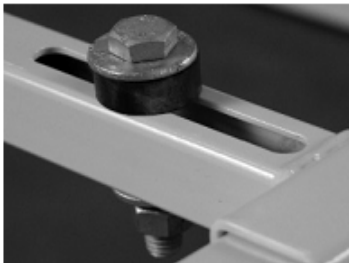
4. Remove Hex Bolts and washers from the adjustment U-Bars to adjust to your desired width (Adjusts in 1" increments).



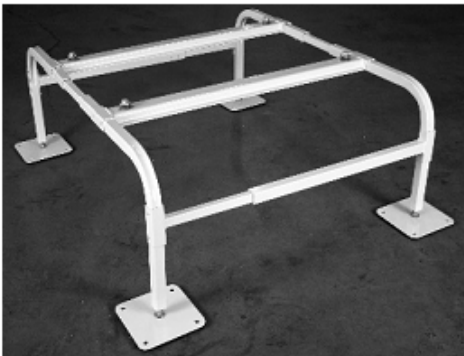
5. Attach arms to completed U-Bars. Insert one 3/8"-16 x 1 3/4" Hex Bolt, 3/8" Split Washer and 3/8" nut to hole on face of arm.



6. Attach the two stability arms to the sides of the stand. Insert one 3/8"-16 x 1 3/4" Hex Bolt, 3/8" Split Washer and 3/8" nut to hole on face of arm.



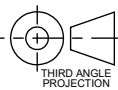
7. Mount unit to stand and insert in slot one 3/8"-16 x 1 1/2" bolt, two 3/8" galvanized washers, one rubber washer, one 3/8" split washer and one 3/8" nut.



8. Bolt unit to foundation (Hardware not included).

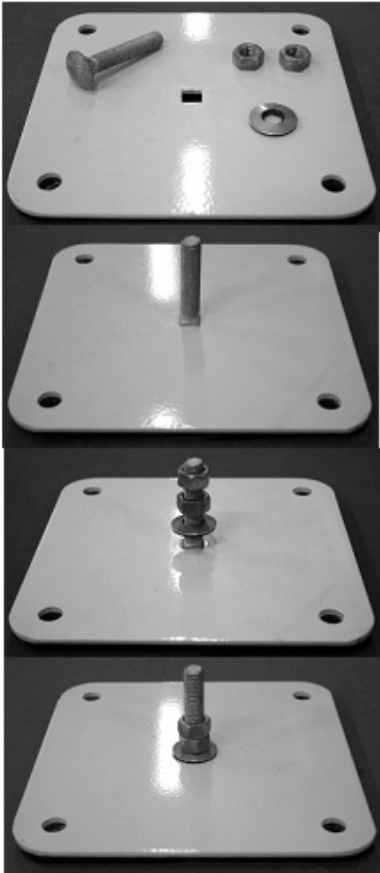
*\*As of 1/1/2015 Quick-Sling offers a 2-year warranty on steel & workmanship; Quick-Sling products are coated in accordance with ASTM D3451-06.*

|  |               |
|--|---------------|
| UNLESS OTHERWISE SPECIFIED:            |               |
| DIMENSIONS ARE IN INCHES [MILLIMETERS] |               |
| TOLERANCES ARE: ANGLES ±1.0°           |               |
| FRACTIONAL SIZES X/Y ±1/64             |               |
| INCHES                                 | [MILLIMETERS] |
| .X = ±0.1                              | [X = ±2.5]    |
| .XX = ±0.01                            | [X = ±1.3]    |
| .XXX = ±0.005                          | [X = ±0.13]   |



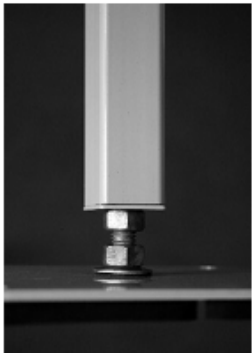
|   |                     |              |
|---|---------------------|--------------|
| CONFIDENTIAL - PROPRIETARY - DO NOT COPY<br>THE INFORMATION SET FORTH IN THIS DOCUMENT AND RELATED INFORMATION IS THE CONFIDENTIAL PROPERTY OF DIVERSiTECH CORPORATION, AND IS NOT TO BE COPIED OR REPRODUCED OR DISTRIBUTED IN ANY FORM WITHOUT PRIOR WRITTEN PERMISSION FROM DIVERSiTECH CORPORATION.<br>DO NOT SCALE DRAWING | ASSEMBLY: QSMS3001  | WEIGHT       |
|   | DWG. NO. FL-44215.3 | GMS.         |
|   |                     | REV. 1       |
|   |                     | SHEET 4 OF 6 |

QSMS2405



1. Insert 3/8"-16x2" Carriage Bolt through bottom of foot.

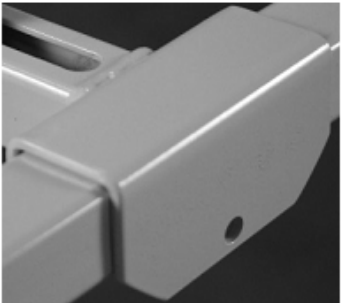
2. Add one 3/8" bonded washer and two 3/8" hex nuts.



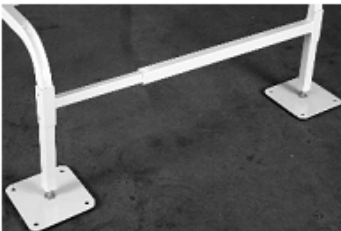
3. Screw on the adjustment U-Bar until foot is locked in place.



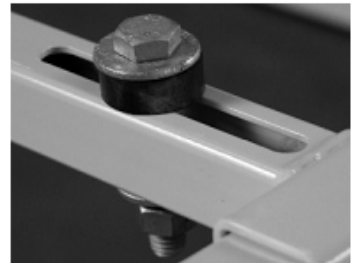
4. Remove Hex Bolts and washers from the adjustment U-Bars to adjust to your desired width (Adjusts in 1" increments).



5. Attach arms to completed U-Bars. Insert one 3/8"-16 x 1 3/4" Hex Bolt, 3/8" Split Washer and 3/8" nut to hole on face of arm.



6. Attach the two stability arms to the sides of the stand. Insert one 3/8"-16 x 1 3/4" Hex Bolt, 3/8" Split Washer and 3/8" nut to hole on face of arm.



7. Mount unit to stand and insert in slot one 3/8"-16 x 1 1/2" bolt, two 3/8" galvanized washers, one rubber washer, one 3/8" split washer and one 3/8" nut.

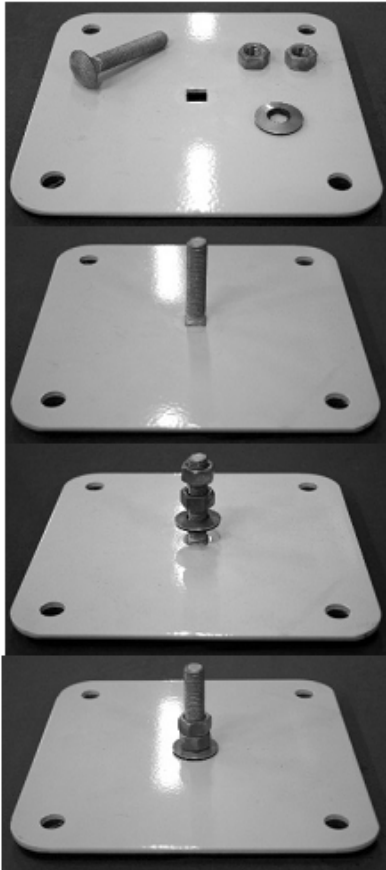


8. Bolt unit to foundation (Hardware not included).

\*As of 1/1/2015 Quick-Sling offers a 2-year warranty on steel & workmanship; Quick-Sling products are coated in accordance with ASTM D3451-06.



QSTD3000



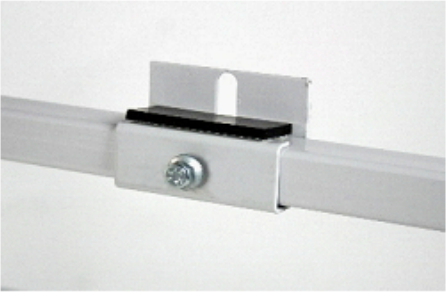
1. Insert 3/8"-16x2" Carriage Bolt through bottom of foot.

2. Add one 3/8" Bonded Washer and two 3/8" Hex Nuts.

3. Screw on the adjustment U-Bar until foot is locked in place.



4. Remove Hex Bolts and Washers from the adjustment U-Bars to adjust to your desired width (Adjusts in 1" increments).



5. Remove the factory screws from the bottom of your equipment, slide the clips to that location and screw the factory screws through the clip into your equipment.



6. Attach arms to completed U-Bars. Insert one 3/8"-16 x 1 3/4" Hex Bolt, 3/8" Split Washer and 3/8" Nut to hole on face of arm.

Peel and stick rubber vibration isolation pads. Can be used where necessary, depending on unit type.



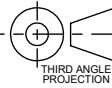
7. Attach the two stability arms to the sides of the stand. Insert one 3/8"-16 x 1 3/4" Hex Bolt, 3/8" Split Washer and 3/8" Nut to hole on face of arm.



8. Bolt unit to foundation (Hardware not included).

*\*As of 1/1/2015 Quick-Sling offers a 2-year warranty on steel & workmanship; Quick-Sling products are coated in accordance with ASTM D3451-06.*

|  |               |
|--|---------------|
| UNLESS OTHERWISE SPECIFIED:            |               |
| DIMENSIONS ARE IN INCHES [MILLIMETERS] |               |
| TOLERANCES ARE: ANGLES ±1.0°           |               |
| FRACTIONAL SIZES X/Y ±1/64             |               |
| INCHES                                 | [MILLIMETERS] |
| .X = ±0.1                              | [X = ±2.5]    |
| .XX = ±0.01                            | [X = ±1.3]    |
| .XXX = ±0.005                          | [XX = ±0.13]  |



|   |                     |              |
|---|---------------------|--------------|
| CONFIDENTIAL - PROPRIETARY - DO NOT COPY<br>THE INFORMATION SET FORTH IN THIS DOCUMENT AND RELATED INFORMATION IS THE CONFIDENTIAL PROPERTY OF DIVERSiTECH CORPORATION, AND IS NOT TO BE COPIED OR REPRODUCED OR DISTRIBUTED IN ANY FORM WITHOUT PRIOR WRITTEN PERMISSION FROM DIVERSiTECH CORPORATION.<br>DO NOT SCALE DRAWING | ASSEMBLY: QSMS3001  | WEIGHT       |
|   | DWG. NO. FL-44215.3 | GMS.         |
|   |                     | REV. 1       |
|   |                     | SHEET 6 OF 6 |