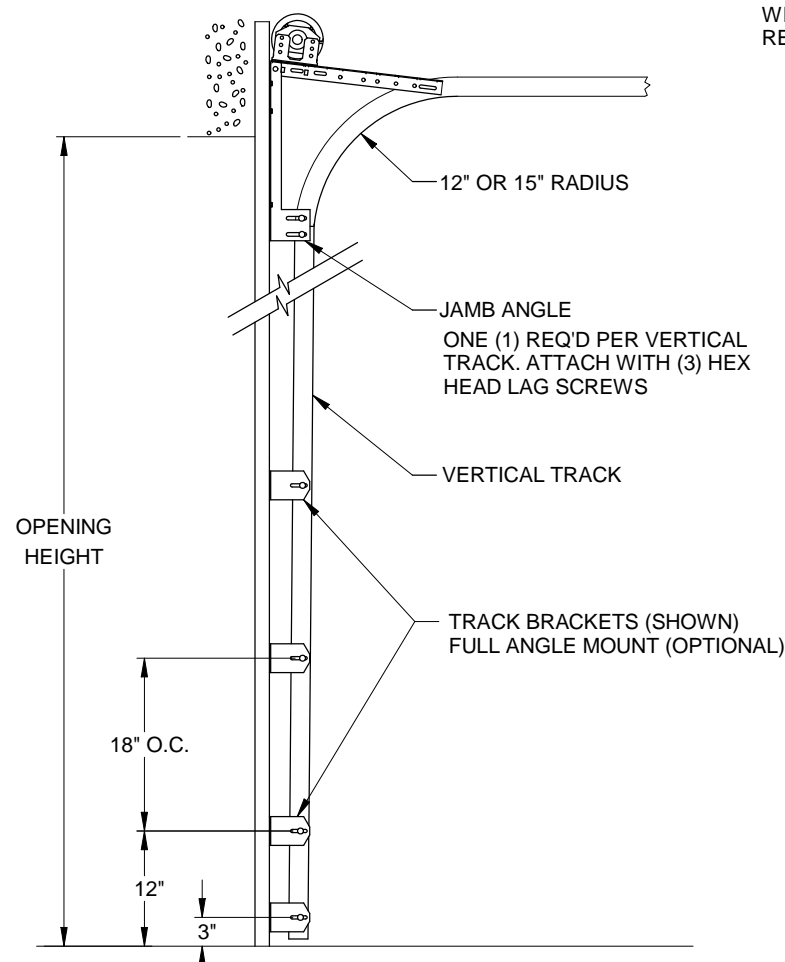
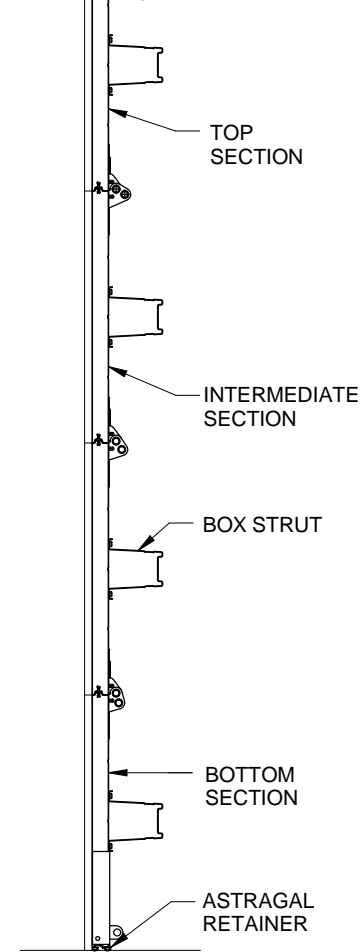


OVERALL SECTION THICKNESS = 2"  
BASE SECTION THICKNESS = 1-3/8"

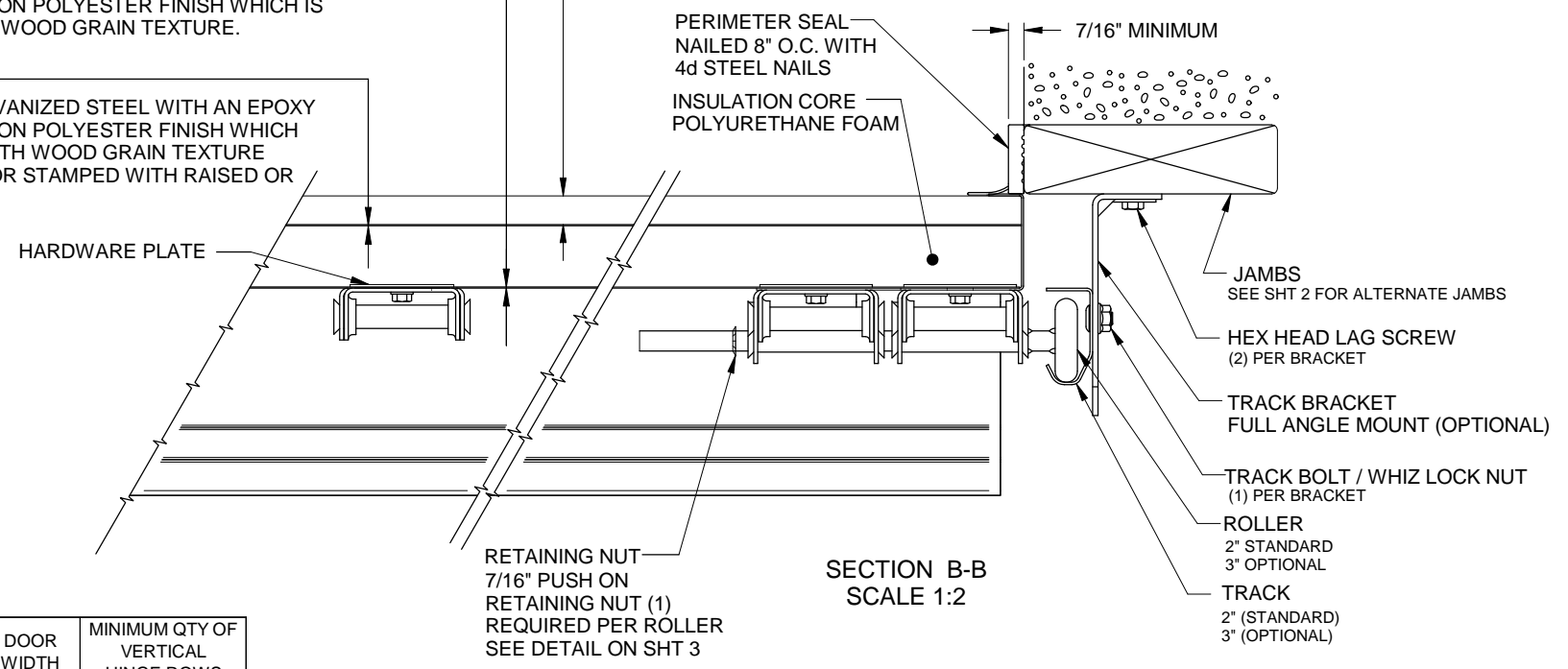


TYPICAL TRACK INSTALLATION  
NORMAL HEADROOM TRACK SHOWN, LOW HEADROOM, LIFT CLEARANCE AND VERTICAL LIFT TRACK AVAILABLE

**INTERIOR SKIN**  
.013 THICK G-40 GALVANIZED STEEL WITH AN EPOXY PRIMER AND BAKED ON POLYESTER FINISH WHICH IS ROLL-FORMED WITH WOOD GRAIN TEXTURE.

**EXTERIOR SKIN**  
.014 THICK G-40 GALVANIZED STEEL WITH AN EPOXY PRIMER AND BAKED ON POLYESTER FINISH WHICH IS ROLL-FORMED WITH WOOD GRAIN TEXTURE WITH FLUSH PANEL OR STAMPED WITH RAISED OR RECESSED PANELS.

**EXTERIOR TRIM BOARD**  
.625 THICK X 5.00 WIDE PVC TRIM BOARD



DOOR WIDTH	MINIMUM QTY OF VERTICAL HINGE ROWS
8' - 0"	1
9' - 0"	1
10' - 0"	2
12' - 0"	2
14' - 0"	3
16' - 0"	3
18' - 0"	3

**SPRING COUNTERBALANCE**  
SPRING WIRE INDIVIDUALLY CALCULATED TO COUNTERBALANCE DOOR. QUANTITY AND SIZE OF SPRING WILL VARY BASED ON DOOR SIZE.

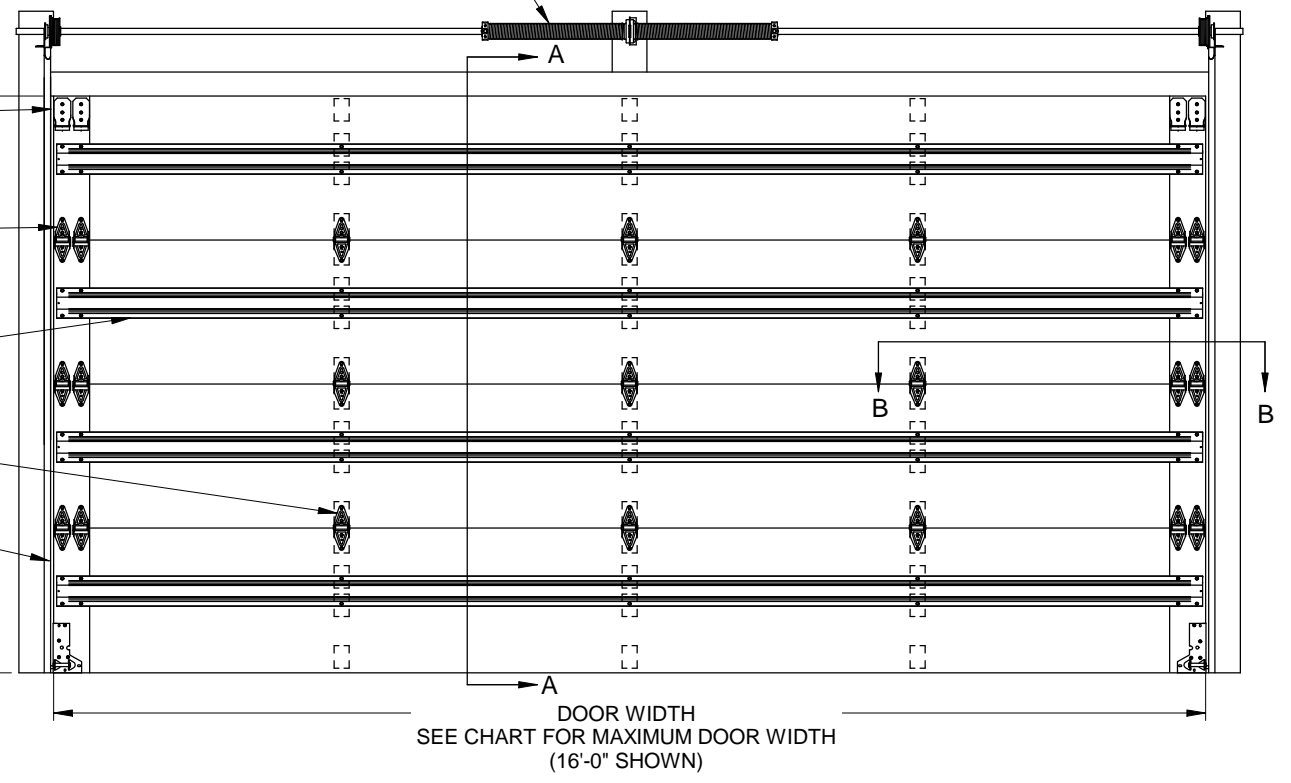
**TOP FIXTURE**  
FASTENED WITH (3) 1/4" X 5/8" THREAD-FORMING SELF-TAPPING SCREWS

**EDGE HINGE**  
FASTENED WITH (5) 1/4" X 5/8" THREAD-FORMING SELF-TAPPING SCREWS

**BOX STRUT REINFORCING LOCKS**  
REQUIRED ON MANUALLY OPERATED DOORS

**CENTER HINGE**  
FASTENED WITH (5) 1/4" X 5/8" THREAD-FORMING SELF-TAPPING SCREWS

**CORNER BRACKET**  
FASTENED WITH (4) 1/4" X 5/8" THREAD-FORMING SELF-TAPPING SCREWS




DOORS TESTED  
ANSI/DASMA 108  
FOR STATIC AIR PRESSURE

TESTED PER ANSI/DASMA 115 FOR LARGE MISSILE IMPACT AND CYCLIC WIND PRESSURE

MAXIMUM DOOR WIDTH	DESIGN LOAD (PSF)	
8' - 0"	52.4	-57.0
9' - 0"	52.4	-57.0
10' - 0"	52.4	-57.0
12' - 0"	32.7	-39.4
14' - 0"	32.7	-39.4
16' - 0"	32.7	-39.4
18' - 0"	25.9	-31.1

SCALE: NONE		DRAWN BY: G. WEDEKIND		CHECKED BY: G. WEDEKIND		DATE: 07/18/17		ECO: 7512.03	
A		RELEASED FOR PRODUCTION		7512.03		07/18/17		DATE: 07/18/17	
REV.		DESCRIPTION		ECO		DATE		ECO: 7512.03	

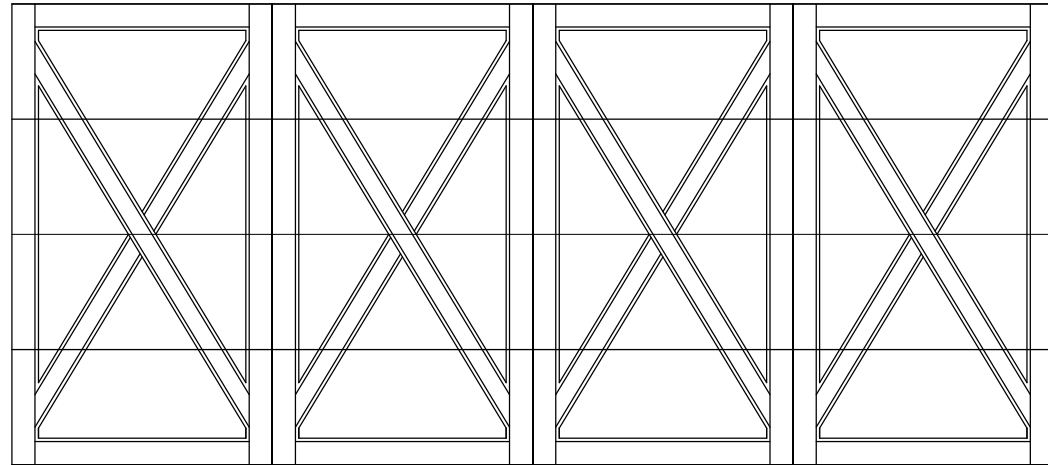


1101 EAST RIVER ROAD  
DIXON, IL 61021

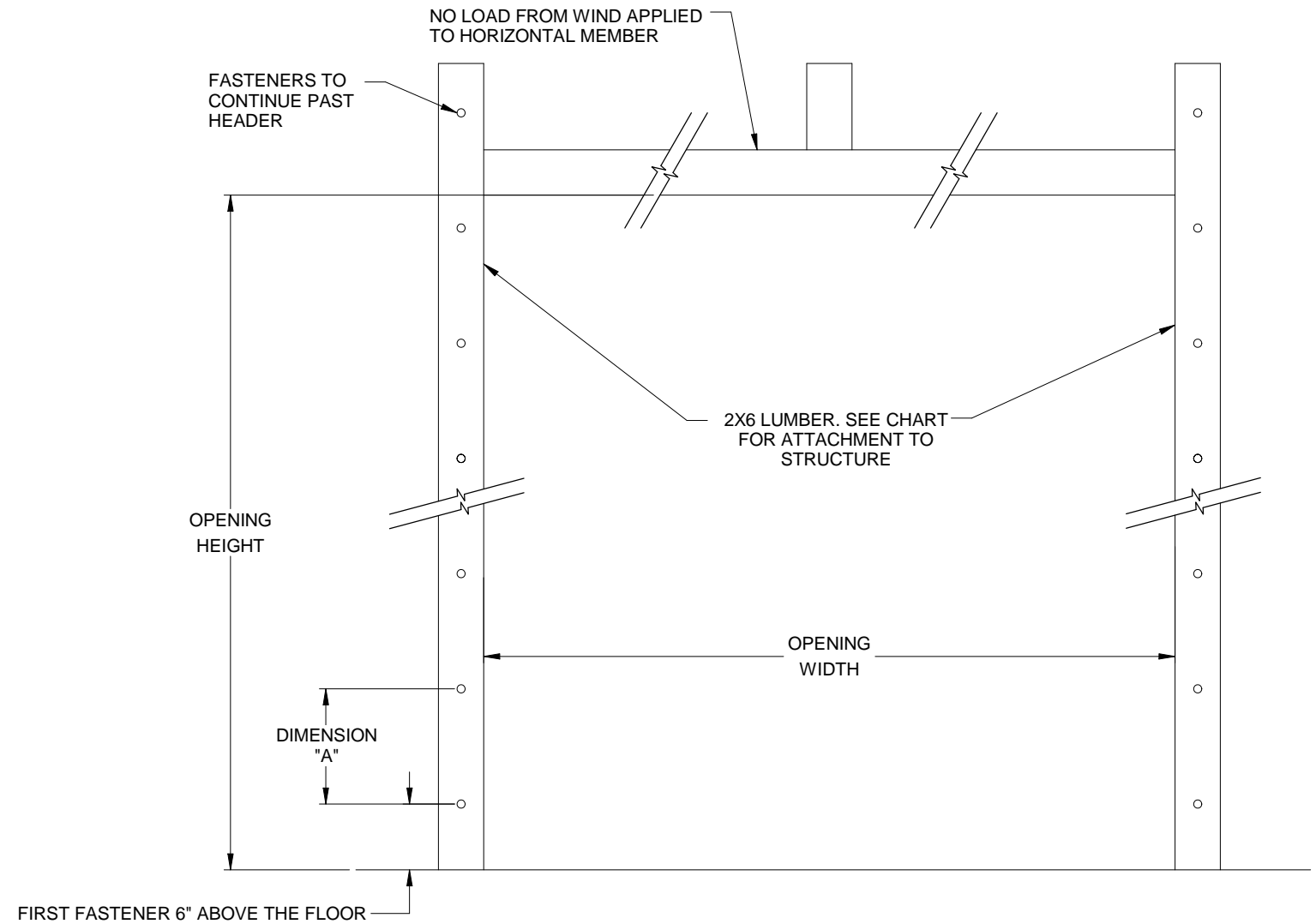
TITLE: SPEC, WIND LOAD ROCKCREEKE

NO. P-3340

SHEET 1 OF 3	REV A
--------------	-------



**EXTERIOR ELEVATION**  
 FLUSH SECTION WITH DECORATIVE TRIM  
 BOARDS. ARRANGMENT OF BOARDS  
 WILL VARY BASED ON DESIGN, CROSS  
 BUCKS SHOWN



**JAMB ATTACHMENT NOTES**

1. MAXIMUM POSITIVE LOAD PER JAMB =  $(10' \times 52.4 \text{ PSF}) / 2 = 262 \text{ LBS PER FOOT}$
2. MAXIMUM NEGATIVE LOAD PER JAMB =  $(16' \times -39.4 \text{ PSF}) / 2 = 316 \text{ LBS PER FOOT}$ .
3. DESIGN OF THE SUPPORTING STRUCTURE SHALL BE THE SOLE RESPONSIBILITY OF THE BUILDING DESIGNER AND SHALL BE DESIGNED FOR THE JAMB LOADS LISTED IN NOTES 3 AND 4.
4. ALTERNATE JAMB ATTACHMENTS MAY BE USED IF APPROVED BY A REGISTERED PROFESSIONAL ENGINEER.
5. DASMA TECHNICAL DATA SHEET TDS-161 MAY BE USED FOR ALTERNATE JAMB ATTACHMENTS.

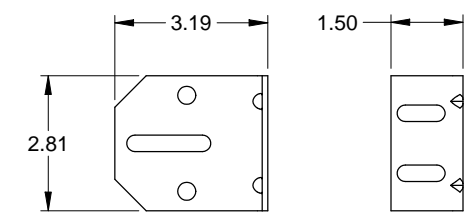
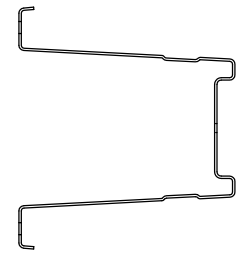
2X6 ATTACHMENT TO STRUCTURE						
STRUCTURE TYPE	FASTENER TYPE	MINIMUM EMBEDMENT	MINIMUM EDGE DISTANCE	MINIMUM ON CENTER SPACING	DIMENSION A (MAXIMUM ON CENTER SPACING)	ALLOWABLE TENSION LOAD
2500 PSI MIN. CONCRETE	1/4" TAPCON+ (PLUS) WITH 1-1/8" OD WASHER	2"	2.5	6"	31"	691
SOUTHERN PINE	3/8" X 3" LAG WITH 1-1/8" OD WASHER	1.50"	1.50"	1.50"	28"	620
SPRUCE PINE FIR	3/8" X 3" LAG WITH 1-1/8" OD WASHER	1.50"	1.50"	1.50"	22"	482

SCALE: NONE  
 DRAWN BY: G. WEDEKIND  
 CHECKED BY: G. WEDEKIND  
 DATE: 07/18/17  
 ECO: 7512.03

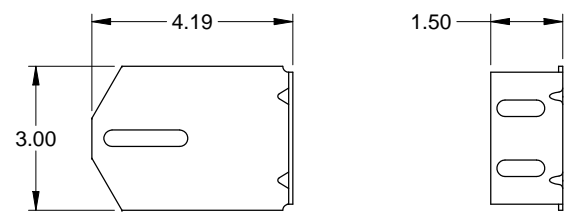


TITLE: SPEC, WIND LOAD ROCKCREEKE  
 NO. P-3340  
 SHEET 2 OF 3  
 REV A

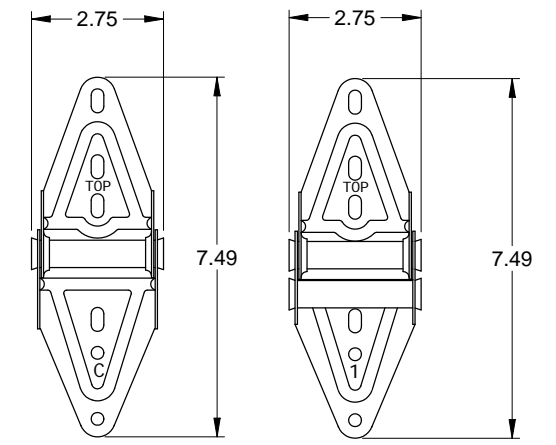
STEEL BOX STRUT DETAIL  
 20 GA. (.035" MIN) GALVANIZED  
 HIGH TENSILE STEEL 80 KSI MINIMUM YIELD



3" TRACK BRACKET  
 .116 GALV STEEL

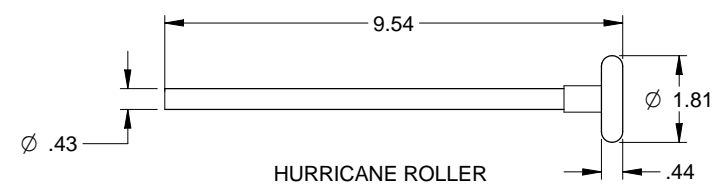


4" TRACK BRACKET  
 .116 GALV. STEEL

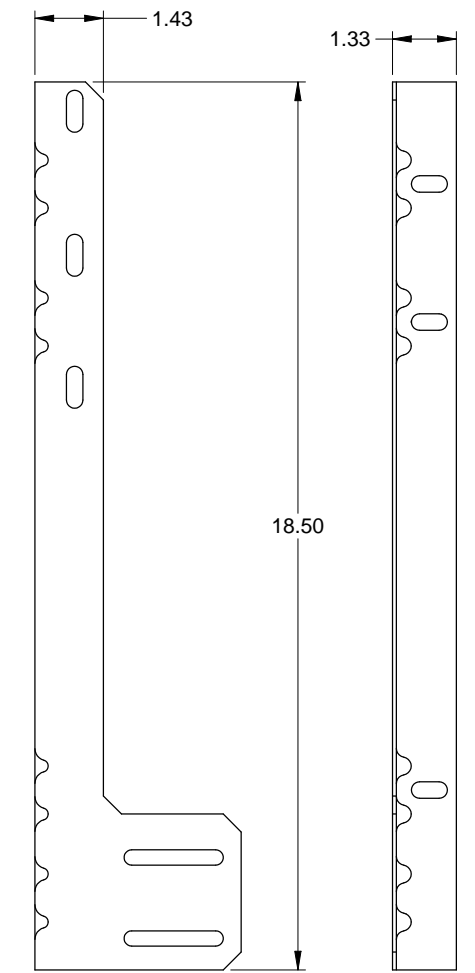


CENTER HINGE  
 .045 GALV. STEEL

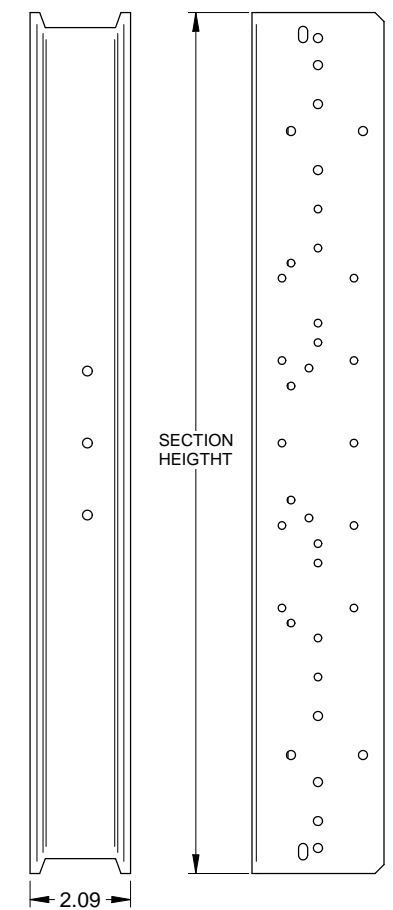
EDGE HINGE  
 .086 GALV. STEEL



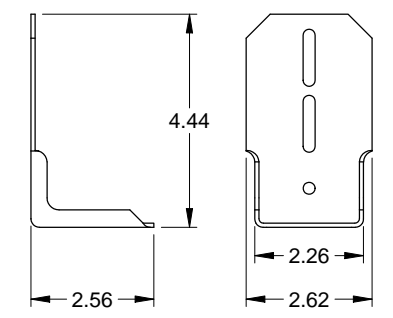
HURRICANE ROLLER



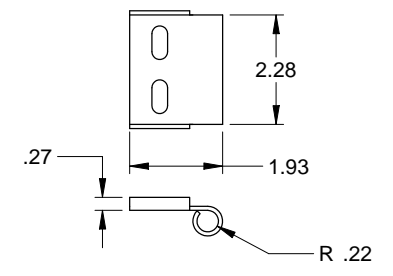
JAMB ANGLE  
 .078 GALV. STEEL



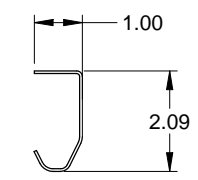
END STILE  
 .055 GALV. STEEL



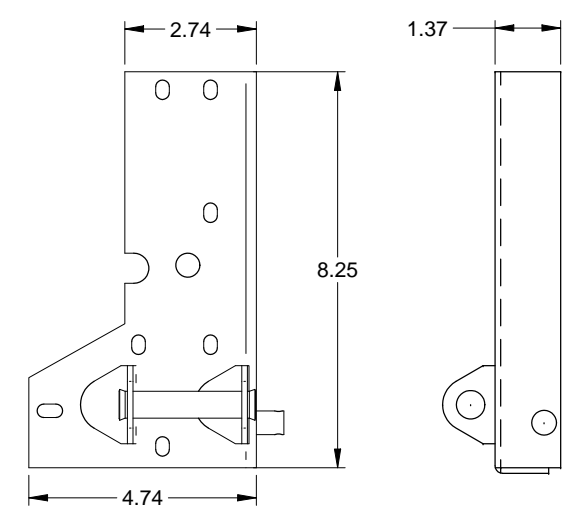
TOP FIXTURE  
 .086 GALV. STEEL



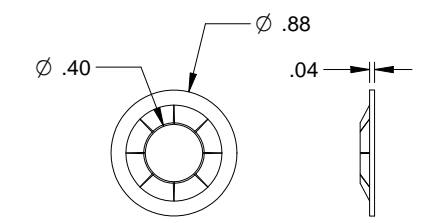
TOP ROLLER CARRIER  
 .116 GALV. STEEL  
 ATTACHED TO TOP FIXTURE WITH  
 (2) TRACK BOLTS AND WHIZ NUTS



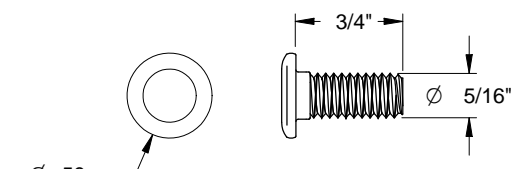
TRACK  
 .086 GALV. STEEL



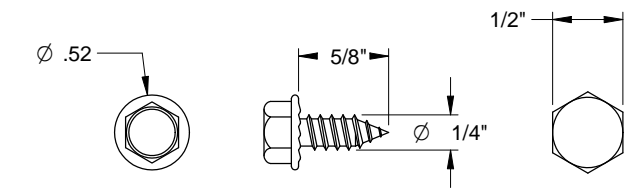
CORNER BRACKET  
 .116 GALV. STEEL



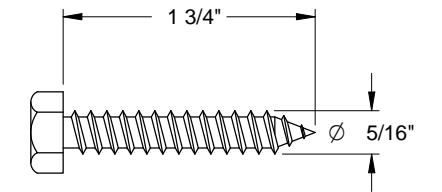
SCALE: 1:1  
 RETAINING NUT



TRACK BOLT



SHEET METAL SCREW



HEX HEAD LAG SCREW

SCALE: NONE	 1101 EAST RIVER ROAD DIXON, IL 61021	TITLE: SPEC, WIND LOAD ROCKCREEKE	
DRAWN BY: G. WEDEKIND		NO. P-3340	SHEET 3 OF 3
CHECKED BY: G. WEDEKIND			
DATE: 07/18/17			
ECO: 7512.03			