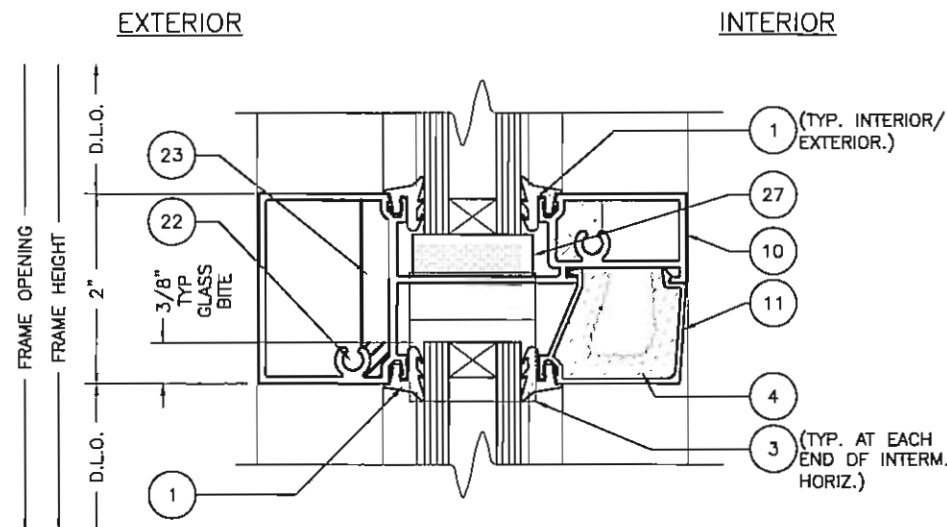
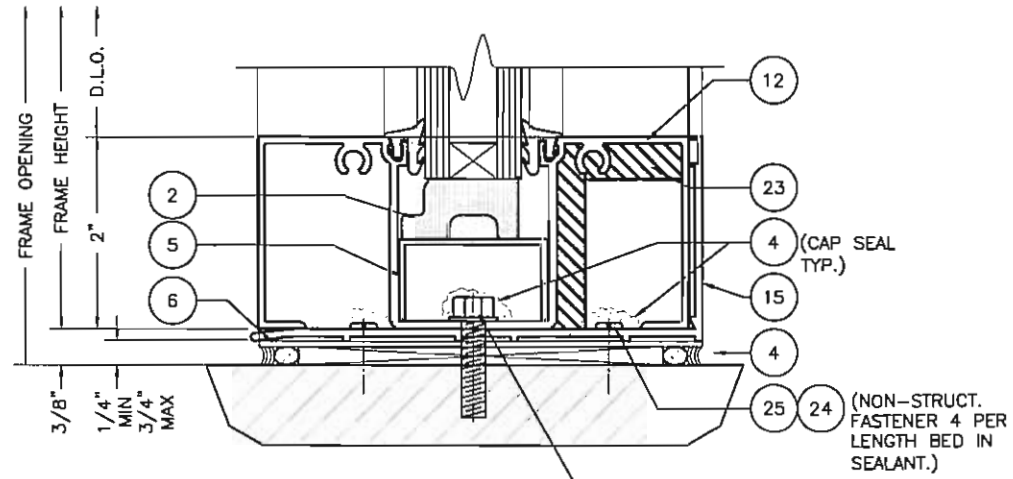


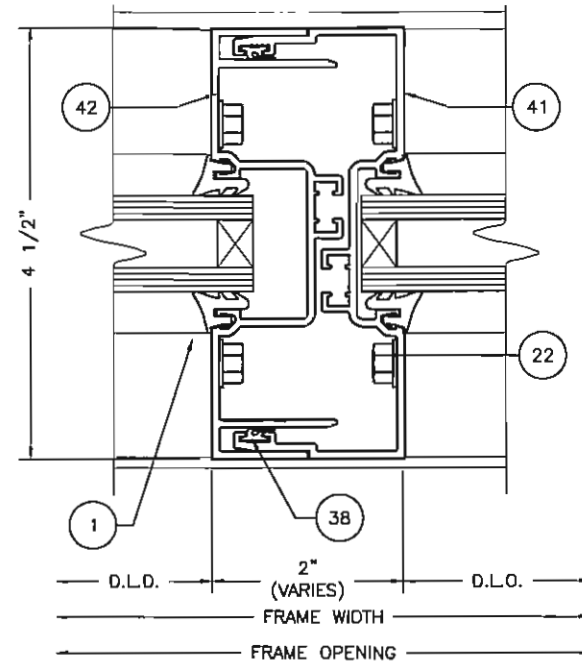
1 INTERIOR GLAZE HEAD
5 SCALE: 1:2



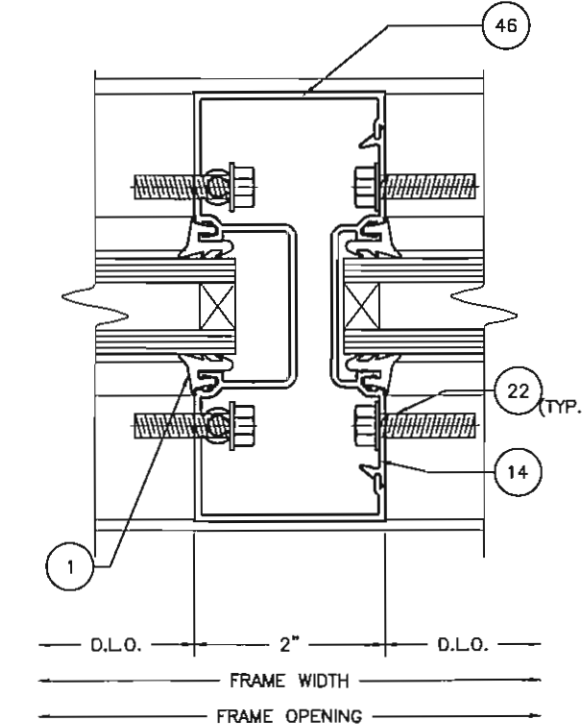
2 INTERIOR GLAZE HORIZONTAL
5 SCALE: 1:2



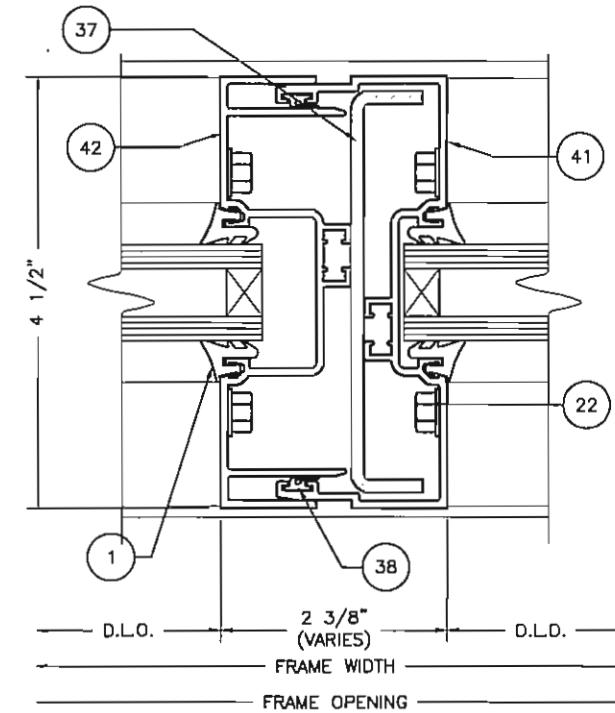
3 INTERIOR GLAZE SILL
5 SCALE: 1:2



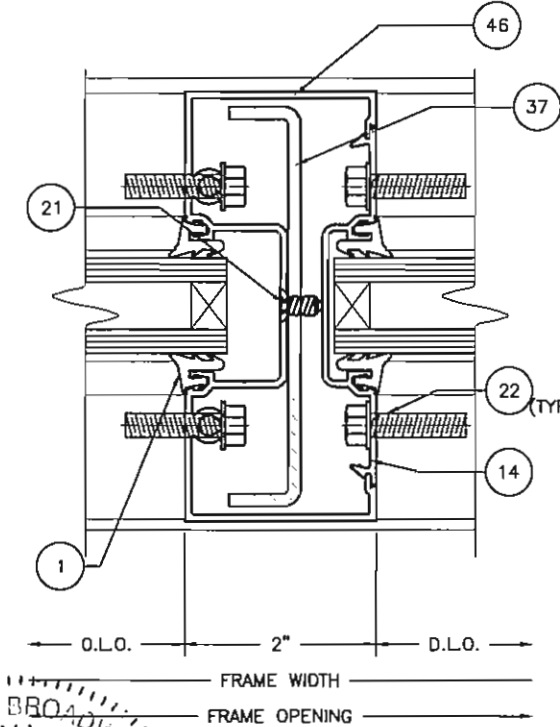
4 EXPANSION MULLION
5 SCALE: 1:2



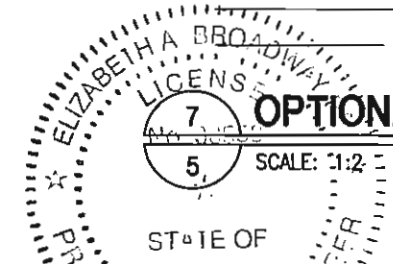
6 OPTIONAL VERTICAL
5 SCALE: 1:2



5 EXPANSION MULLION W/STEEL
5 SCALE: 1:2



7 OPTIONAL VERTICAL W/STEEL
5 SCALE: 1:2



ELIZABETH A. BROADWAY
PROFESSIONAL ENGINEER
FLORIDA REGISTRATION NO. 38558

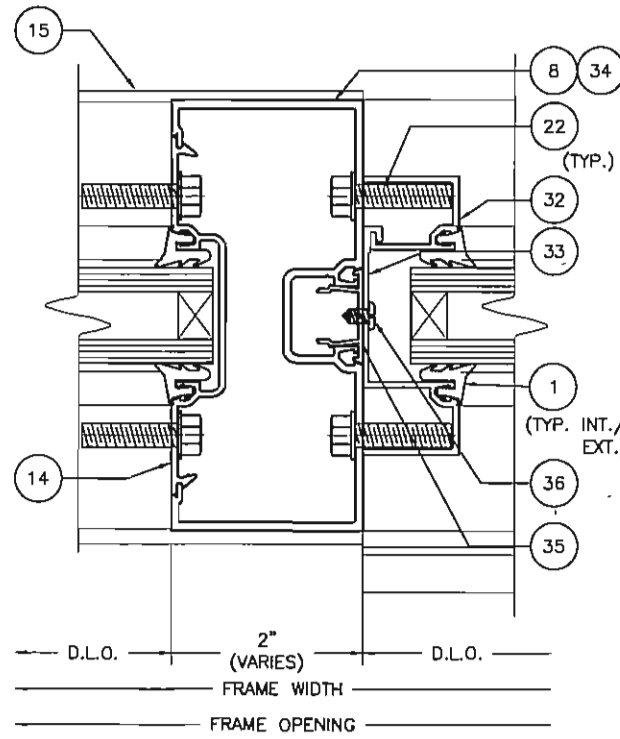
B BROADWAY ENGINEERING, PA
CIVIL, MECHANICAL, STRUCTURAL AND BUILDING DESIGN
See Us At www.Broadway-Eng.Com
1335 W. Cass Street
Tampa, Florida 33608 813-251-9244
Fax 813-251-9330 Bus. Email: Info@Broadway-Eng.Com
Cadd. Email: DGor@Broadway-Eng.Com
BE-4882 Certificate of Authorization No. 4599

REV	BY	DATE	DESCRIPTION

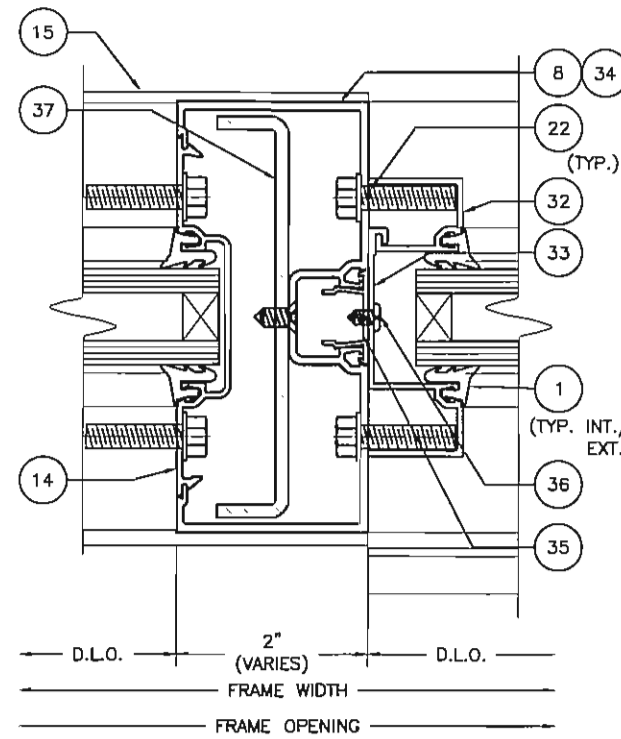
Coral
Architectural Products
3015 RICE MILNE ROAD, TUSCALOOSA, AL 35406
PHONE: 666-772-1737 FAX: 666-557-7370

FLORIDA PRODUCT
APPROVAL DRAWINGS FOR FL300
STANDARD FRAMING DETAILS

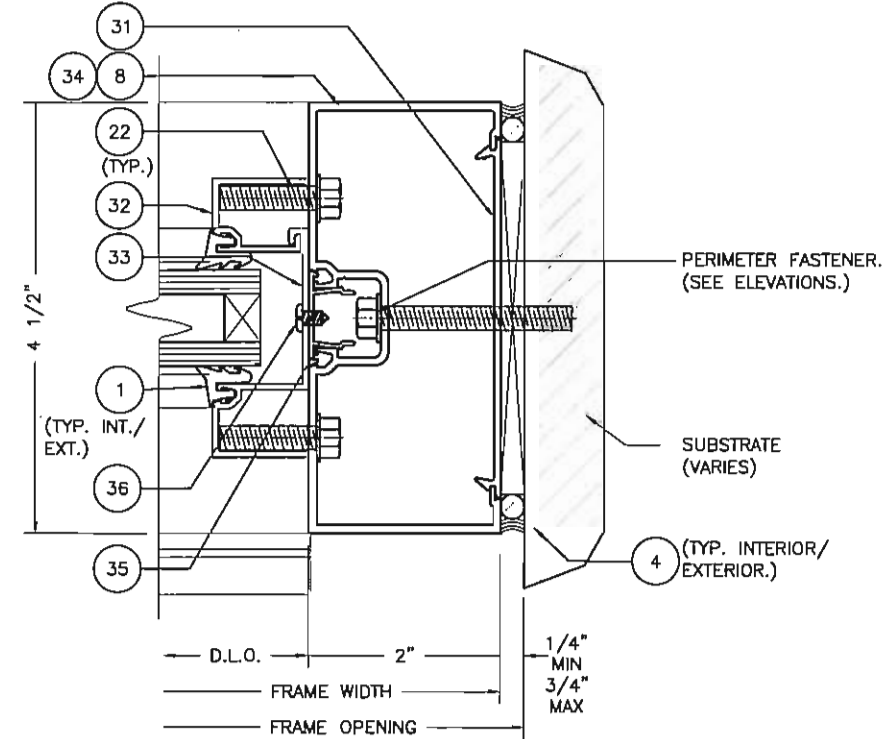
PROJECT NO.	FL300
DRAWN	DEG
DATE	3/22/18
CHECKED	W/S
APPROVED	EAB
SHEET	5 OF 17



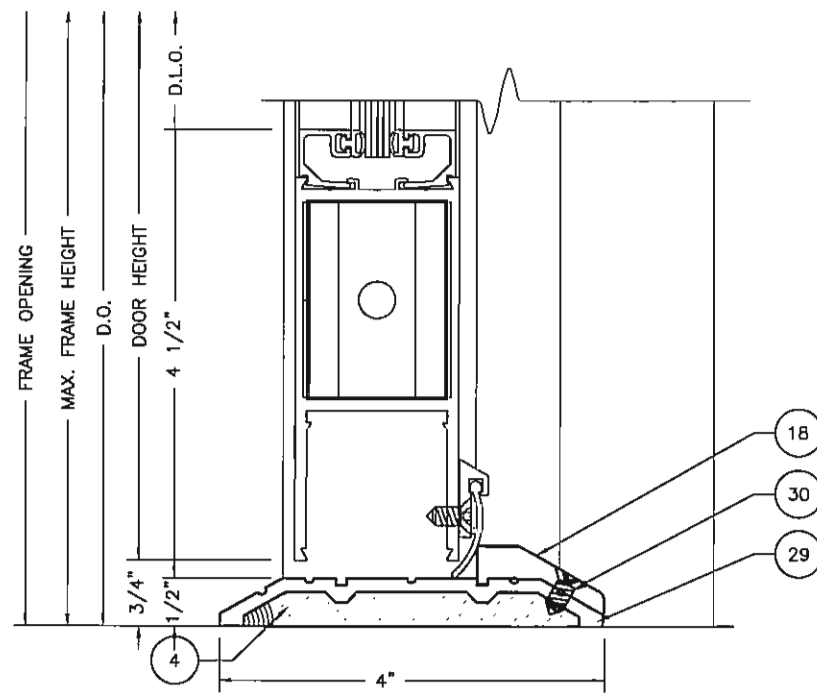
1 **INTERM TRANSOM JAMB**
8 SCALE: 1:2



2 **INTERM TRANSOM JAMB W/STEEL**
8 SCALE: 1:2

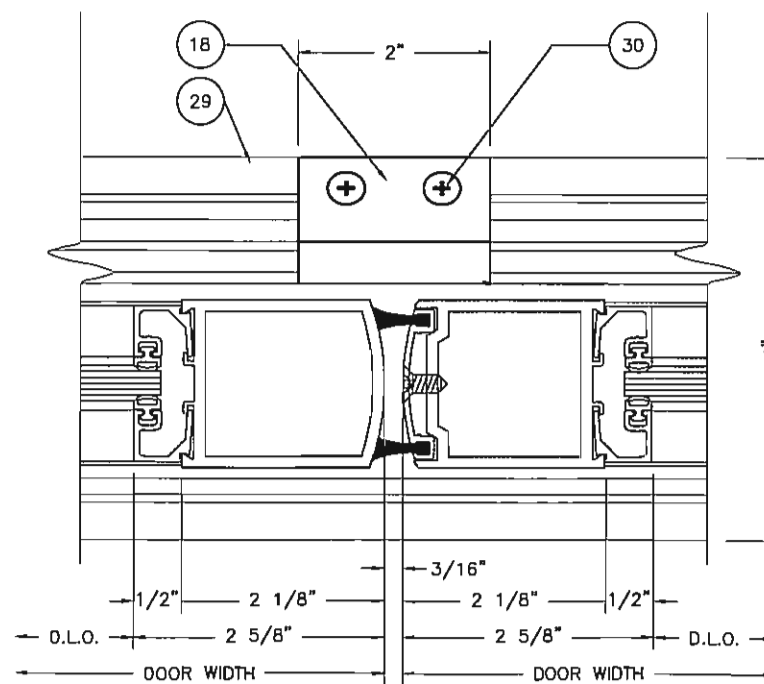


3 **TRANSOM JAMB AT WALL**
8 SCALE: 1:2



NOTE: (18) AND (30) NOT REQUIRED/OPTIONAL

4 **THRESHOLD**
8 SCALE: 1:2



NOTE: (18) AND (30) NOT REQUIRED/OPTIONAL

5 **MEETING STILES**
8 SCALE: 1:2

ELIZABETH A. BROADWAY
 LICENSE
 No. 32553
 ELIZABETH A. BROADWAY
 PROFESSIONAL ENGINEER
 FLORIDA REGISTRATION NO. 38558

B BROADWAY ENGINEERING, P.A.
 CIVIL, MECHANICAL, STRUCTURAL AND BUILDING DESIGN
 See Us At www.Broadway-Eng.Com
 1335 W. Cass Street
 Tampa, Florida 33606 813-251-9244
 Fax 813-251-9330 Bus. Email: Info@Broadway-Eng.Com
 Cood. Email: DGarr@Broadway-Eng.Com
 BE-4882 Certificate of Authorization No. 4599

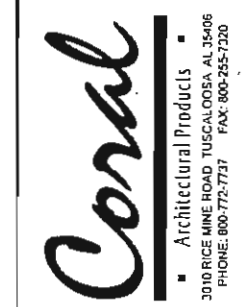
REV	BY	DATE	DESCRIPTION

Coral
 Architectural Products
 3010 RICE MIKE ROAD, TUSCALOOSA, AL 35406
 PHONE: 800-772-7737 FAX: 800-255-7320

FLORIDA PRODUCT
 APPROVAL DRAWINGS FOR FL300
 DOOR FRAMING DETAILS

PROJECT NO.	FL300
DRAWN	DATE
DEG	3/22/18
CHECKED	APPROVED
WS	EAB
SHEET	8 OF 17

BILL OF MATERIALS						
ITEM	PIN	DESCRIPTION	DIMENSIONS	MATERIAL	MANUFACTURE	NOTES
1	NG1	GLAZING GASKET	.197 SPACE	EPDM	VARIES	USED ON EXT AND INT
2	SB3	SETTING BLOCK	1.50 X 4.00 X .625	EPDM	VARIES	"2" EACH PER LITE OF GLASS MEETS ASTM C864
3	WD300-1	WATER DEFLECTOR	VARIABLE SPACE	RIG ID PVC	CORAL	LOCATE ONE AT EACH END OF HORIZ
4	795	JOINT PERIMETER SEALANT	VARIABLE SPACE	SILICONE	DOW OR TREMCO	
5	CS101-1	SETTING CHAIR	.853 X 1.544 X .062	6063-T6 ALUMINUM	CORAL	
6	ED319-1	END DAM	.75 X 2.188 X .062	6063-T6 ALUMINUM	CORAL	FABRICATED LENGTH = 4.625"
7	FL304	VERTICAL MULLION	2.00 X 4.5 X .070	6063-T6 ALUMINUM	CORAL	
8	FL309	DOOR JAMB	2.00 X 4.5 X .080	6063-T6 ALUMINUM	CORAL	
9	FL316	HEAVY VERTICAL MULLION	2.00 X 4.5 X .190	6063-T6 ALUMINUM	CORAL	
10	FL306	HORIZONTAL	2.00 X 4.460 X .070	6063-T6 ALUMINUM	CORAL	
11	FL303	GLASS STOP	1.207 X 1.543 X .050	6063-T6 ALUMINUM	CORAL	
12	FL301	HEAD/WALL JAMB	2.00 X 4.4 X .070	6063-T6 ALUMINUM	CORAL	
13	FL302	SILL/HEAD	2.00 X 4.460 X .070	6063-T6 ALUMINUM	CORAL	
14	FL305	OPEN BACK POCKET FILLER	.562 X 3.75 X .062	6063-T6 ALUMINUM	CORAL	
15	FL319	SUBSILL FLASHING	2.125 X 4.714 X .078	6063-T6 ALUMINUM	CORAL	
16	FL307	DOOR HEADER	2.00 X 4.500 X .085	6063-T6 ALUMINUM	CORAL	
17	DS200	DOOR STOP	.500 X 1.019 X .050	6063-T6 ALUMINUM	CORAL	
18	DP200-1	PANIC STOP	1.323 X .402 X .188	6063-T6 ALUMINUM	CORAL	FABRICATED LENGTH = 2.00"
19	SR101	10GA A-36 STL	1.25 X 4.18 X .134	PRIMED STEEL	VARIES	USED AT DOOR JAMB AND VERTICAL MULLIONS AS REQUIRED
20	SR105	1/4" A-36 STL	.75 X 4.188 X .250	PRIMED STEEL	VARIES	USED AT DOOR JAMB AND VERTICAL MULLIONS AS REQUIRED
21	AS23	ATTACH STL TO MULLIONS	#12-24 X 3/8" UCPHH			ATTACH 4" FROM TOP, 4" FROM BOTTOM, @ CENTER LINE
22	AS16	TYP SPLINE SCREW	#14 X 1" HHSTS	STEEL	VARIES	TYPICAL SPLINE SCREW
23	SM5601	JOINT TAPE				USED AT ALL HORIZONTAL INTERSECTIONS
24	FASTENER	FOR ATTACHING SUBSILL TO STEEL /WOOD SUBSTRATE	3/16" X 2" PHSMB	STEEL/WOOD	VARIES	
25	FASTENER	FOR ATTACHING SUBSILL TO CONCRETE SUBSTRATE	3/16" X 2" PH CONCRETE SCREW	CONCRETE	VARIES	
26	AS31	ED319-1 TO FL319	#6 X 3/8" PPH	STEEL		"2" EACH ATTACH END DAM TO SUBSILL
27	SB4	SETTING BLOCK	1.25 X 4 X .438	EPDM	VARIES	"2" EACH PER LITE OF GLASS MEETS ASTM C864
28	WOOL PILE	DOOR STOP WEATHERING	.125 SPACE	WOOL	VARIES	
29	TH4	THRESHOLD	.50 X 4.00 X .125	6063-T6 ALUMINUM	CORAL	
30	AS5	FASTENER	310 X 1/2" PFH	STEEL	VARIES	
31	CS104	FLAT FILLER PLATE	.265 X 3.750 X .070	6063-T6 ALUMINUM	CORAL	
32	FL518	TRANSOM SASH	.7670 X 1.00 X .063	6063-T6 ALUMINUM	CORAL	
33	CS115	TRANSOM SASH	2.391 X 1.00 X .063	6063-T6 ALUMINUM	CORAL	
34	FL349	HEAVY DOOR MULLION	2.00 X 4.5 X .1352	6063-T6 ALUMINUM	CORAL	
35	CS105	POCKET FILLER	.480 X 1 X .040	6063-T6 ALUMINUM	CORAL	
36	AS2	FASTENER	#8 X 1/2" PPH	STEEL	VARIES	ATTACH @ 12" O.C.
37	SR102	10GA A-36 STL	.75 X 4.188 X .134	PRIMED STEEL	VARIES	USED AT DOOR JAMB AND VERTICAL MULLIONS AS REQUIRED
38	VG10	GASKET	.197 SPACE	EPDM	VARIES	
39	CS118	MALE HEAD RECEPTOR	1.531 X 1.465 X .062	6063-T6 ALUMINUM	CORAL	
40	CS119	FEMALE HEAD RECEPTOR	4.786 X 1.562 X .062	6063-T6 ALUMINUM	CORAL	
41	FL310	MALE EXPANSION MULLION	4.5 X 1.7870 X .078	6063-T6 ALUMINUM	CORAL	
42	FL311	FEMALE EXPANSION MULLION	4.5 X 1.3680 X .078	6063-T6 ALUMINUM	CORAL	
43	FL340	SUBSILL	4.7880 X 2.5 X .093	6063-T6 ALUMINUM	CORAL	
44	FL353	CORNER POST	4.5 X 4.5 X .093	6063-T6 ALUMINUM	CORAL	
45	FL351	CORNER POST	4.5 X 4.5 X .093	6063-T6 ALUMINUM	CORAL	
46	FL314	VERTICAL MULLION	2 X 4.5 X .078	6063-T6 ALUMINUM	CORAL	
47	DG101	DOOR GLASS STOP	.8604 X .539 X .055	6063-T6 ALUMINUM	CORAL	



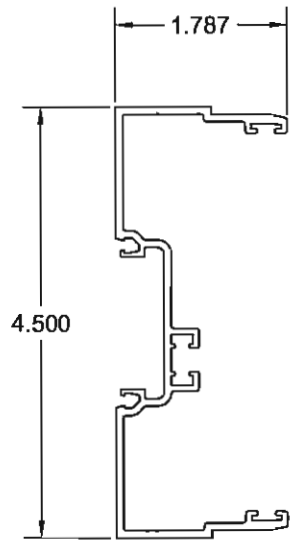
FLORIDA PRODUCT APPROVAL DRAWINGS FOR FL300
 BILL OF MATERIALS

ELIZABETH A. BROADWAY
 PROFESSIONAL ENGINEER
 FLORIDA REGISTRATION NO. 38558

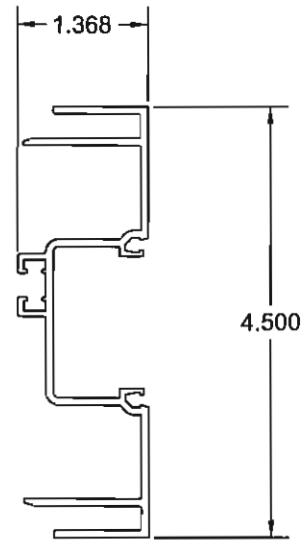
B BROADWAY ENGINEERING, P.A.
 CIVIL, MECHANICAL, STRUCTURAL AND BUILDING DESIGN
 See Us At www.Broadway-Eng.Com
 1335 W. Cass Street
 Tampa, Florida 33608 813-251-9244
 Fax 813-251-9330 Bus. Email: Info@Broadway-Eng.Com
 Cood. Email: DGarr@Broadway-Eng.Com
 BE-4882 Certificate of Authorization No. 4599

PROJECT NO.	FL300
DRAWN	DEG
CHECKED	W/S
APPROVED	EAB
SHEET	10 OF 17

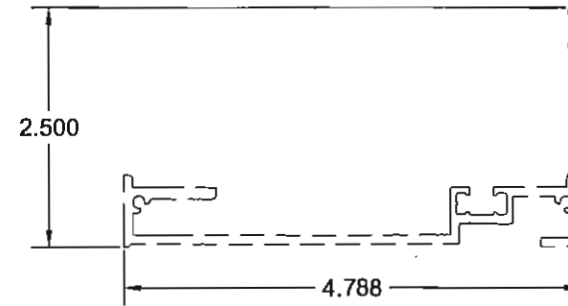
DESCRIPTION



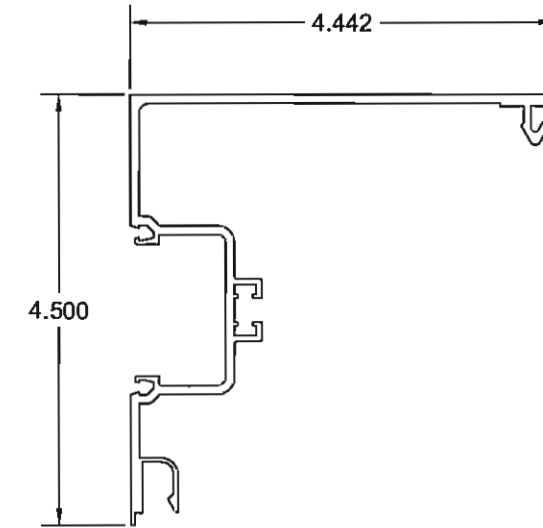
41 EXPANSION MULLION



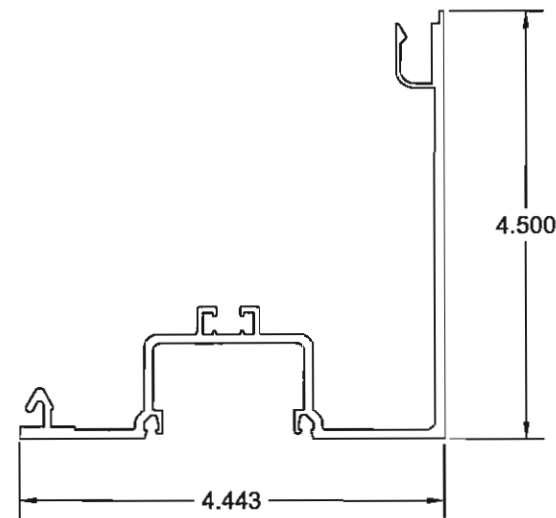
42 EXPANSION MULLION



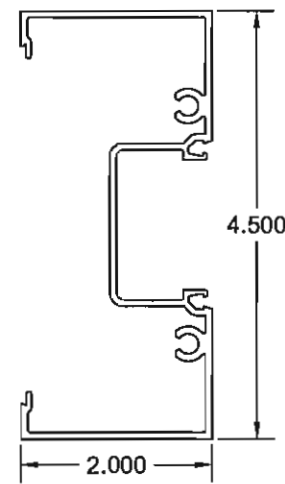
43 HIGH PERFORMANCE SUBSILL



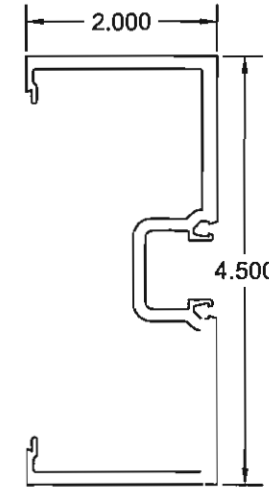
44 CORNER POST



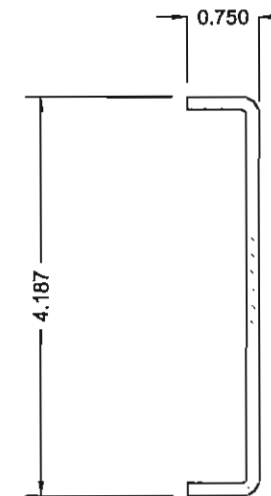
45 CORNER POST



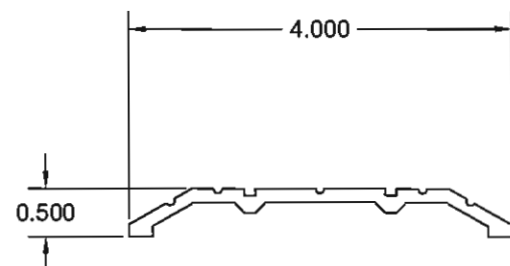
46 VERTICAL MULLION



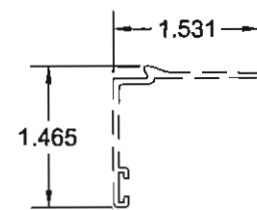
34 HEAVY DOOR MULLION



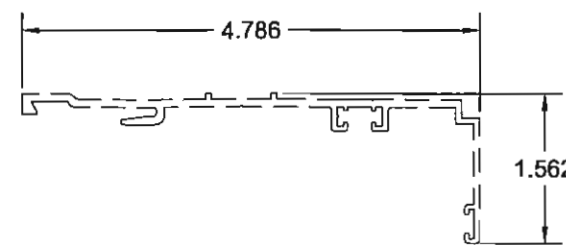
37 REINFORCING STEEL



29 THRESHOLD



39 HEAD RECEPTOR



40 HEAD RECEPTOR

ELIZABETH A. BROADWAY
 PROFESSIONAL ENGINEER
 FLORIDA REGISTRATION NO. 38558
 No. 38558
 3/22/18

B BROADWAY ENGINEERING, PA
 CIVIL, MECHANICAL, STRUCTURAL AND BUILDING DESIGN
 See Us At www.Broadway-Eng.Com
 1335 W. Cass Street
 Tampa, Florida 33606 813-251-9244
 Fax 813-251-9330 Bus. Email: Info@Broadway-Eng.Com
 Cadd. Email: DGor@Broadway-Eng.Com
 BE-4862 Certificate of Authorization No. 4599

REV	BY	DATE	DESCRIPTION

Coral
 Architectural Products
 3010 RICE MINE ROAD, TUSCALOOSA, AL 35606
 PHONE: 800-775-7727 FAX: 800-255-7320

FLORIDA PRODUCT
 APPROVAL DRAWINGS FOR FL300
 DIE DRAWINGS

PROJECT NO.	FL300
DRAWN	DATE
DEG	3/22/18
CHECKED	APPROVED
WS	EAB
SHEET	12 OF 17

PERIMETER FASTENERS:

1. TYPICAL INSTALLATION INTO SUBSTRATES
 - A. 3000 PSI CONCRETE
 - B. STEEL, 18 GA. MIN.
 - C. HOT ROLLED STEEL, 1/8" MIN. THICKNESS
 - D. SO. PINE, GRADE NO. 2 OR BETTER

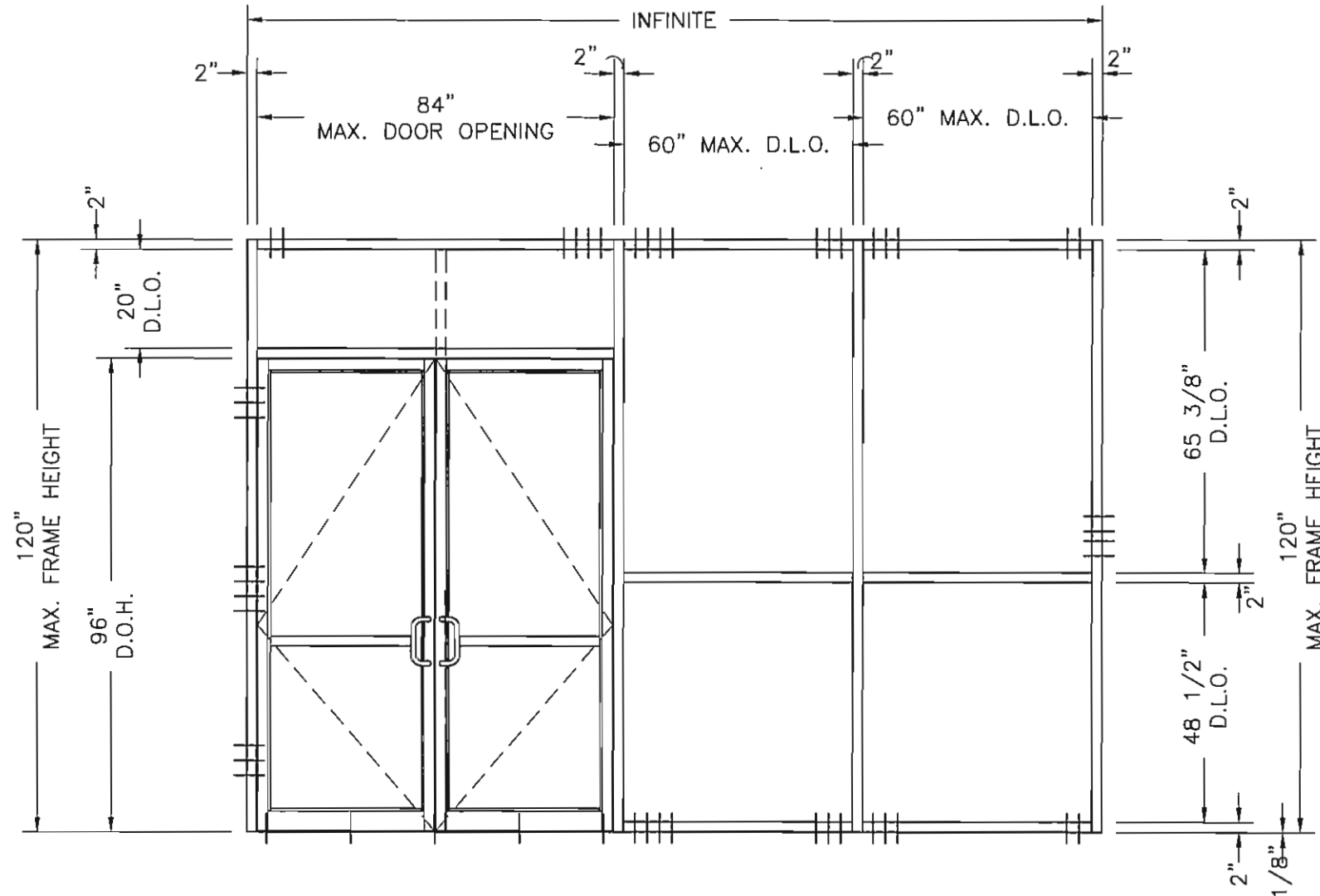
2. FIRST ANCHOR IS 2" FROM EDGE OF VERTICAL. EACH ADDITIONAL FASTENER IS AT REQUIRED MIN. SPACING.

ANCHOR LENGTHS ARE SHOWN TO MEET MINIMUM EMBEDMENT.

DOOR PAIR DEPICTED, SINGLE DOORS QUALIFIED BY SAME.

FOR DOOR FRAMES WITHOUT SIDELITES, ANCHORING SHALL BE DUPLICATED ON BOTH JAMBS AS SHOWN (PAIRS AND/ OR SINGLES).

HEAD AND SILL
 #14 X 3" WOOD SCREWS WITH 2" MIN. EMBEDMENT, 1-3/4" MIN. EDGE DISTANCE. LOCATE FIRST ANCHOR 2" FROM EDGE OF MULLION AND ADDITIONAL FASTENERS @ 3" MIN. SPACING.



DOOR FRAME JAMB ANCHORS #14 X 3" PAN OR HEX HEAD WOOD SCREW	
LOCATION	SPACING
FROM BOTTOM OF FRAME (3) TOTAL	11-1/2", 14-1/2", 17-1/2"
FROM CENTERLINE (4) TOTAL	1-1/2", 4-1/2" ABOVE CENTERLINE 1-1/2", 4-1/2" BELOW CENTERLINE
FROM BOTTOM OF DOOR HEADER (3) TOTAL	11-1/2", 14-1/2", 17-1/2"

NOTE:
 DOOR FRAMES WITH AND WITHOUT TRANSOM SHALL BE ANCHORED AS SHOWN ON CHART ABOVE.

**WOOD SUBSTRATE - 3" THICK
 ANCHOR LOCATIONS**

JAMB
 #14 X 3" WOOD SCREWS WITH 2" MIN. EMBEDMENT, 1-3/4" MIN. EDGE DISTANCE. LOCATE (1) ANCHOR @ 1-1/2" ABOVE AND BELOW CENTERLINE AND ADDITIONAL FASTENERS @ 3" MIN. SPACING.

THRESHOLD ANCHORS 1/4" X 2-1/2" FHP TAPCON OR EQUAL - 1-3/4" MINIMUM EMBEDMENT, 2-1/2" MIN. EDGE DISTANCE	
SINGLE DOORS UP TO 48" (3 ANCHORS TOTAL)	(1) EACH 4" FROM EACH JAMB
	(1) EACH AT CENTER LINE OF DOOR OPENING
PAIRS DOORS UP TO 96" (5 ANCHORS TOTAL)	(1) EACH AT 4" FROM EACH JAMB
	(1) EACH AT CENTER LINE OF DOOR OPENING
	(1) EACH BETWEEN CENTER LINE AND JAMB ANCHORS

NOTE:
 WOOD FRAMING THAT IS LESS THAN 2-1/2" SHALL BE CONSIDERED BLOCKING. STOREFRONT FRAMING SHALL BE FASTENED THROUGH WOOD INTO STEEL OR CONCRETE SUBSTRATE.

NOTE:
 MULLION JAMB ANCHORS MAY BE OMITTED FOR HEIGHTS LESS THAN 9'-0"

ELIZABETH A. BROADWAY
 PROFESSIONAL ENGINEER
 FLORIDA REGISTRATION NO. 38558
 3/28/18

B BROADWAY ENGINEERING, PA
 CIVIL, MECHANICAL, STRUCTURAL AND BUILDING DESIGN
 See Us At www.Broadway-Eng.Com
 1335 W. Cass Street
 Tampa, Florida 33606 813-251-9244
 Fax 813-251-9330 Bus. Email: Info@Broadway-Eng.Com
 Cadd. Email: DGorr@Broadway-Eng.Com
 BE-4862 Certificate of Authorization No. 4599

PROJECT NO.	FL300
DRAWN	DEG
CHECKED	W/S
DATE	3/22/18
APPROVED	EAB
SHEET	14 OF 17

Coral
 Architectural Products
 3010 RICE MINE ROAD, TUSCALOOSA, AL 35406
 PHONE 800-772-7137 FAX 800-255-7320

FLORIDA PRODUCT APPROVAL DRAWINGS FOR FL300

WOOD FASTENER LOCATIONS

PERIMETER FASTENERS:

1. TYPICAL INSTALLATION INTO SUBSTRATES
 - A. 3000 PSI CONCRETE
 - B. STEEL, 18 GA. MIN.
 - C. HOT ROLLED STEEL, 1/8" MIN. THICKNESS
 - D. SO. PINE, GRADE NO. 2 OR BETTER

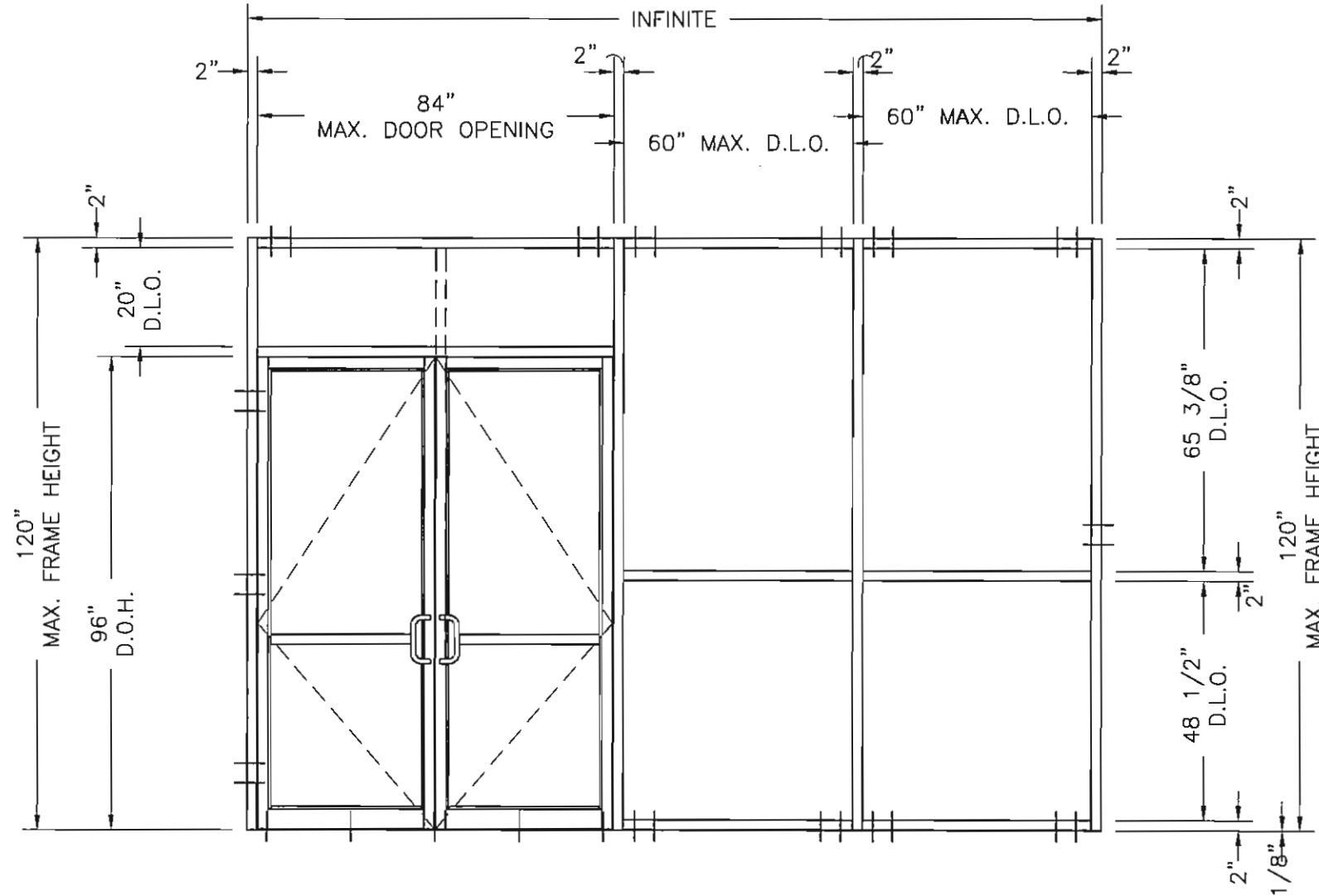
2. FIRST ANCHOR IS 2" FROM EDGE OF VERTICAL. EACH ADDITIONAL FASTENER IS AT REQUIRED MIN. SPACING.

ANCHOR LENGTHS ARE SHOWN TO MEET MINIMUM EMBEDMENT.

DOOR PAIR DEPICTED, SINGLE DOORS QUALIFIED BY SAME.

FOR DOOR FRAMES WITHOUT SIDELITES, ANCHORING SHALL BE DUPLICATED ON BOTH JAMBS AS SHOWN (PAIRS AND/ OR SINGLES).

HEAD AND SILL
 1/4" X 2-1/2" TAPCON WITH 1-3/4" MIN. EMBEDMENT, MIN. 4" SPACING, 2-1/2" MIN. EDGE DISTANCE. LOCATE FIRST ANCHOR 2" FROM EDGE OF MULLION AND ADDITIONAL FASTENERS @ 4" MIN. SPACING.



CONCRETE SUBSTRATE ANCHOR LOCATIONS

DOOR FRAME JAMB ANCHORS 1/4" X 3" HEX OR FLAT HEAD TAPCONS	
LOCATION	SPACING
FROM BOTTOM OF FRAME (2) TOTAL	8-1/2", 12-1/2"
FROM CENTERLINE (2) TOTAL	2" ABOVE CENTERLINE 2" BELOW CENTERLINE
FROM BOTTOM OF DOOR HEADER (2) TOTAL	8-1/2", 12-1/2"

NOTE:
 DOOR FRAMES WITH AND WITHOUT TRANSOM SHALL BE ANCHORED AS SHOWN ON CHART ABOVE.

THRESHOLD ANCHORS 1/4" X 2-1/2" FHP TAPCON OR EQUAL - 1-3/4" MINIMUM EMBEDMENT, 2-1/2" MIN. EDGE DISTANCE	
SINGLE DOORS UP TO 48" (3 ANCHORS TOTAL)	(1) EACH 4" FROM EACH JAMB
	(1) EACH AT CENTER LINE OF DOOR OPENING
PAIRS DOORS UP TO 96" (5 ANCHORS TOTAL)	(1) EACH AT 4" FROM EACH JAMB
	(1) EACH AT CENTER LINE OF DOOR OPENING
	(1) EACH BETWEEN CENTER LINE AND JAMB ANCHORS

JAMB
 1/4" X 2-1/2" TAPCON WITH 1-3/4" MIN. EMBEDMENT, 2-1/2" MIN. EDGE DISTANCE. LOCATE (1) ANCHOR @ 2" ABOVE AND BELOW CENTERLINE

NOTE:
 MULLION JAMB ANCHORS MAY BE OMITTED FOR HEIGHTS LESS THAN 9'-0"



BROADWAY ENGINEERING, PA
 CIVIL, MECHANICAL, STRUCTURAL AND BUILDING DESIGN
 See Us At www.Broadway-Eng.Com
 1335 W. Cass Street
 Tampa, Florida 33606 813-251-9244
 Fax 813-251-9330 Bus. Email: Info@Broadway-Eng.Com
 Cadd. Email: DGor@Broadway-Eng.Com
 BE-4862 Certificate of Authorization No. 4599

Coral
 Architectural Products
 3019 RICE AVE ROAD TUSCALOOSA, AL 35406
 PHONE 800-772-7737 FAX 800-265-7320

FLORIDA PRODUCT APPROVAL DRAWINGS FOR FL300
 CONCRETE FASTENER LOCATIONS

PROJECT NO. FL300	DATE 3/22/18
DRAWN DEG	APPROVED EAB
CHECKED WS	
SHEET 15 OF 17	

REV	BY	DATE	DESCRIPTION

PERIMETER FASTENERS:

1. TYPICAL INSTALLATION INTO SUBSTRATES
 - A. 3000 PSI CONCRETE
 - B. STEEL, 18 GA. MIN.
 - C. HOT ROLLED STEEL, 1/8" MIN. THICKNESS
 - D. SO. PINE, GRADE NO. 2 OR BETTER

2. FIRST ANCHOR IS 2" FROM EDGE OF VERTICAL. EACH ADDITIONAL FASTENER IS AT REQUIRED MIN. SPACING.

ANCHOR LENGTHS ARE SHOWN TO MEET MINIMUM EMBEDMENT.

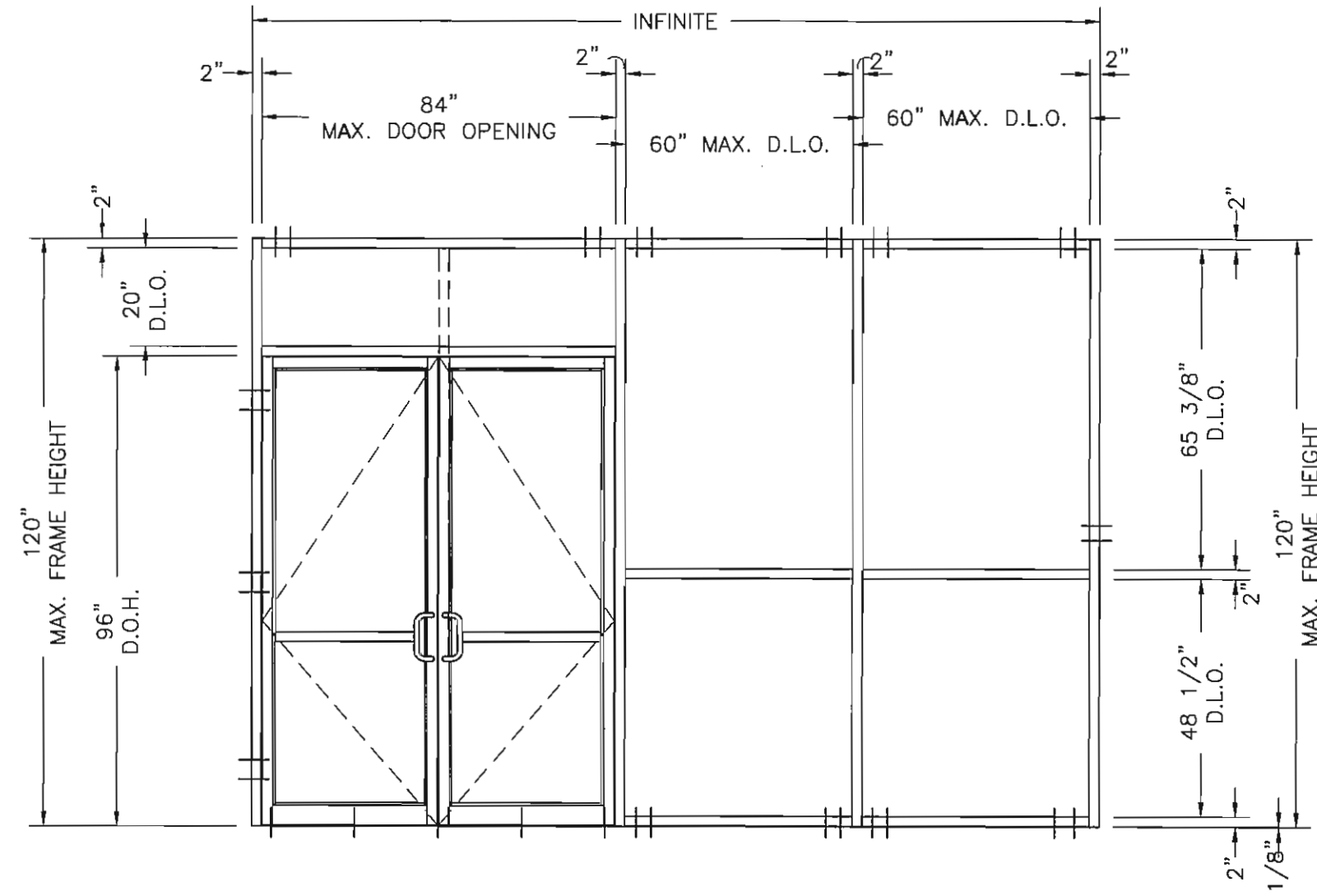
DOOR PAIR DEPICTED, SINGLE DOORS QUALIFIED BY SAME.

FOR DOOR FRAMES WITHOUT SIDELITES, ANCHORING SHALL BE DUPLICATED ON BOTH JAMBS AS SHOWN (PAIRS AND/ OR SINGLES).

HEAD AND SILL
 1/4" X 2-1/2" TEK 3 SCREW.
 LOCATE FIRST ANCHOR 2" FROM EDGE OF MULLION AND ADDITIONAL ANCHORS @ 2" MIN. SPACING.

DOOR FRAME JAMB ANCHORS 1/4-14 X 2-1/2" TEK 3 HEX OR FLAT HEAD SCREWS	
LOCATION	SPACING
FROM BOTTOM OF FRAME (2) TOTAL	8-1/2", 12-1/2"
FROM CENTERLINE (2) TOTAL	2" ABOVE CENTERLINE 2" BELOW CENTERLINE
FROM BOTTOM OF DOOR HEADER (2) TOTAL	8-1/2", 12-1/2"

NOTE:
 DOOR FRAMES WITH AND WITHOUT TRANSOM SHALL BE ANCHORED AS SHOWN ON CHART ABOVE.

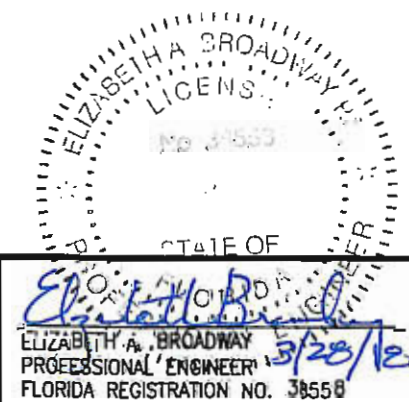


**LIGHT GAUGE MIN. 18 GA. STEEL
 SUBSTRATE ANCHOR LOCATIONS**

JAMB
 1/4" X 2-1/2" TEK 3 SCREW.
 LOCATE (1) ANCHOR @ 1" ABOVE AND BELOW CENTERLINE

NOTE:
 MULLION JAMB ANCHORS MAY BE OMITTED FOR HEIGHTS LESS THAN 9'-0"

THRESHOLD ANCHORS 1/4" X 2-1/2" FHP TAPCON OR EQUAL - 1-3/4" MINIMUM EMBEDMENT, 2-1/2" MIN. EDGE DISTANCE	
SINGLE DOORS UP TO 48" (3 ANCHORS TOTAL)	(1) EACH 4" FROM EACH JAMB
	(1) EACH AT CENTER LINE OF DOOR OPENING
PAIRS DOORS UP TO 96" (5 ANCHORS TOTAL)	(1) EACH AT 4" FROM EACH JAMB
	(1) EACH AT CENTER LINE OF DOOR OPENING
	(1) EACH BETWEEN CENTER LINE AND JAMB ANCHORS



BROADWAY ENGINEERING, P.A.
 CIVIL, MECHANICAL, STRUCTURAL AND BUILDING DESIGN
 See Us At www.Broadway-Eng.Com
 1335 W. Cass Street
 Tampa, Florida 33606 813-251-9244
 Fax 813-251-9330 Bus. Email: Info@Broadway-Eng.Com
 Cadd. Email: DCorr@Broadway-Eng.Com
 BE-4862 Certificate of Authorization No. 4599

PROJECT NO. FL300	DATE 3/22/18
DRAWN DEG	APPROVED EAB
CHECKED WS	SHEET 16 OF 17

Florida Product Approval Drawings for FL300

Light Gauge Steel Fastener Locations

Corral
 Architectural Products
 3010 RICE MIKE ROAD, TUSCALOOSA, AL 35406
 PHONE: 800-772-7727 FAX: 800-255-7320

