

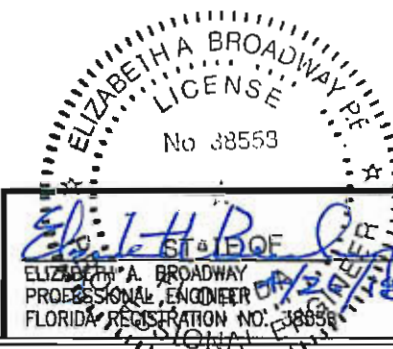
TYPICAL STANDARD MULLION

NOTES:

1. SEE SHEET 3 FOR MULLION TYPES, HEIGHTS AND WIDTHS, AND WIND PRESSURES.
2. SEE SHEETS 14, 15, 16, AND 17 FOR PERIMETER FASTENER SCHEDULE AND LOCATIONS FOR ELEVATIONS WITH DOORS.
3. D.L.O. = DAYLIGHT OPENING; D.O. = DOOR OPENING
4. DOORS ARE SHOWN ON SEPARATE SUBMITTAL: SEE NS213, MS380 & WS500 DOOR PRODUCT APPROVALS. LESSER PRESSURE OF DOOR AND STOREFRONT SYSTEM SHALL PREVAIL.

TEST PARAMETERS:

1. DESIGN PRESSURE = +/-40 PSF
2. AIR TEST AT 6.24 PSF
3. WATER TEST AT 15 PSF
4. MAXIMUM DEFLECTION = L/175 OR .685"



B BROADWAY ENGINEERING, P.A.
 CIVIL, MECHANICAL, STRUCTURAL AND BUILDING DESIGN
 See Us At www.Broadway-Eng.Com
 1335 W. Cass Street
 Tempe, Florida 33606 813-251-9244
 Fax 813-251-9330 Bus. Email: Info@Broadway-Eng.Com
 Cadd. Email: DGarr@Broadway-Eng.Com
 BE-4870 Certificate of Authorization No. 4599

FLORIDA PRODUCT APPROVAL DRAWINGS FOR FL300T

IFRAMEING ELEVATION

REV	BY	DATE	DESCRIPTION

Coral
 Architectural Products
 3015 RICE AVE. ROAD, TUSCALOOSA, AL 35406
 PHONE 800-727-7131 FAX 800-293-7320

PROJECT NO.	FL300T
DRAWN	DEG
DATE	3/28/18
CHECKED	WS
APPROVED	EAB
SHEET	2 OF 17

GLASS SCHEDULE

MARK	TYPE	MANUFACTURER	MAXIMUM D.L.O. SIZE	MAXIMUM AREA
G1	1/4" TEMPERED OUTER SURFACE, 1/2" AIR SPACE, 1/4" TEMPERED INNER SURFACE	VARIES	60" X 94"	39.2 SQ. FT.

NOTE: ANY SINGLE LITE SHOULD NOT EXCEED MAXIMUM SQUARE FEET SHOWN ABOVE IN HORIZONTAL OR VERTICAL CONDITION

DOOR JAMB CHART

MAXIMUM PSF	MAXIMUM WIDTH	MAXIMUM HEIGHT	PART	DETAIL
0-30	84"	96"	FL309	1/7
0-30	84"	120"	FL309 AND SR102	2/7
30-40	84"	96"	FL309 AND SR102	2/7
30-40	84"	120"	FL309 AND SR101	4/7

NOTE: FL349 DOOR JAMB CAN BE SUBSTITUTED FOR FL309 ABOVE AS REQUIRED FOR GEAR HINGE APPLICATIONS

VERTICAL MULLION AND CORNER CHART

MAXIMUM PSF	MAXIMUM WIDTH	MAXIMUM HEIGHT	PART	DETAIL
0-40	60"	84"	FL334T/325T	4/4
0-40	60"	96"	FL316T/325T	5/4
0-40	60"	96"	FL351T/353T	1/9
0-40	60"	96"	FL310T/311T	1/5
0-30	60"	120"	FL316T/325T	5/4
30-40	54"	120"	FL346T/325T	2/5
30-40	42"	120"	FL351T/353T	1/9
30-40	36"	120"	FL310T/311T	1/5

NOTE: PRESSURES (PSF), WIDTHS OR HEIGHTS BEYOND THE MAXIMUM SHOWN IN THE CHARTS ABOVE WILL REQUIRE SHOP DRAWINGS TO BE SIGNED AND SEALED BY A PROFESSIONAL ENGINEER REGISTERED IN THE STATE OF FLORIDA

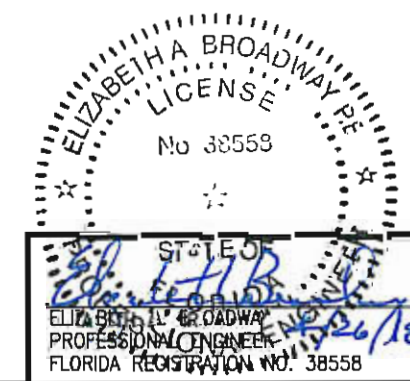
REV	BY	DATE	DESCRIPTION

Coral

Architectural Products
3010 RICE MIAMI ROAD, TUSCALOOSA, AL 35406
PHONE 800-773-7737 FAX 800-755-7320

FLORIDA PRODUCT
APPROVAL DRAWINGS FOR FL300T

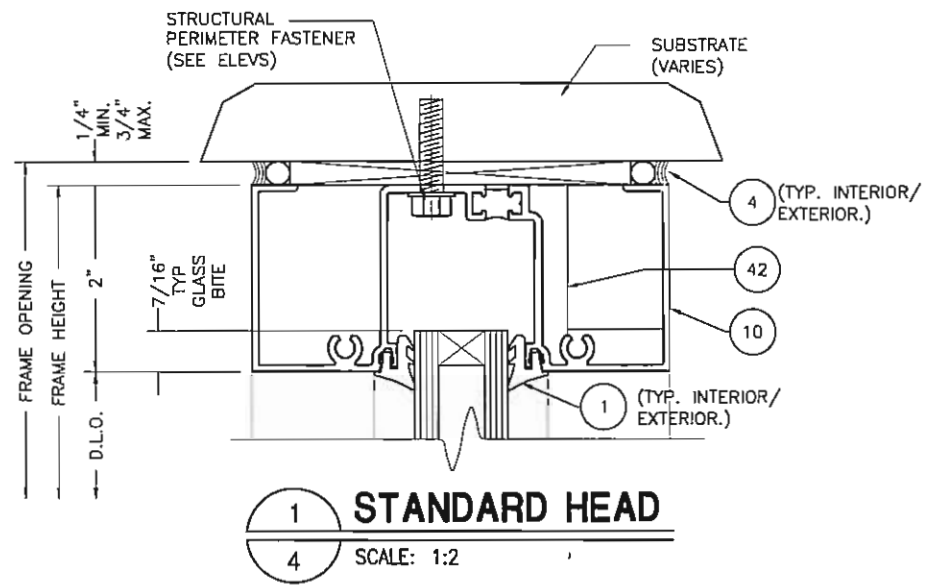
GLASS SCHEDULE & MULLION CHARTS



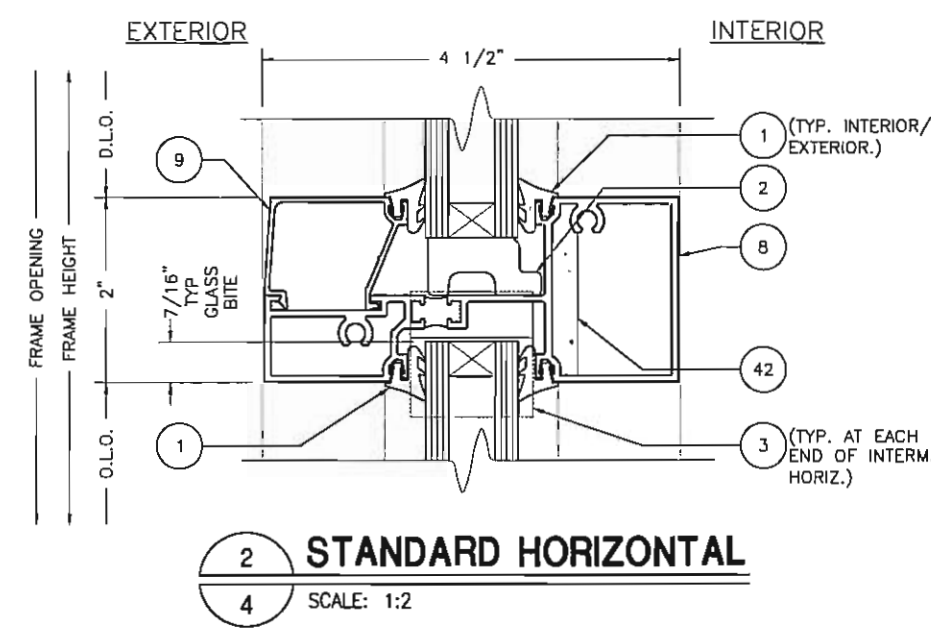
B BROADWAY ENGINEERING, P.A.
CIVIL, MECHANICAL, STRUCTURAL AND BUILDING DESIGN
See Us At www.Broadway-Eng.Com

1335 W. Cass Street
Tampa, Florida 33606 813-251-9244
Fax 813-251-9330 Bus. Email: Info@Broadway-Eng.Com
Cadd. Email: DGor@Broadway-Eng.Com
BE-4870 Certificate of Authorization No. 4599

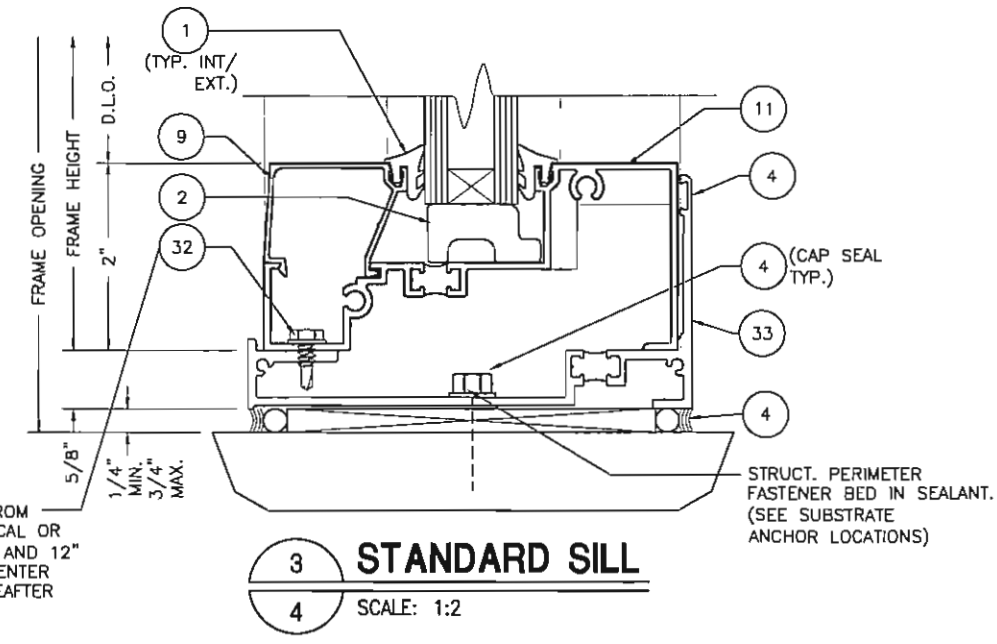
PROJECT NO.	FL300T
DRAWN	DATE
DEG	3/28/18
CHECKED	APPROVED
WS	EAB
SHEET	3 OF 17



1 STANDARD HEAD
4 SCALE: 1:2

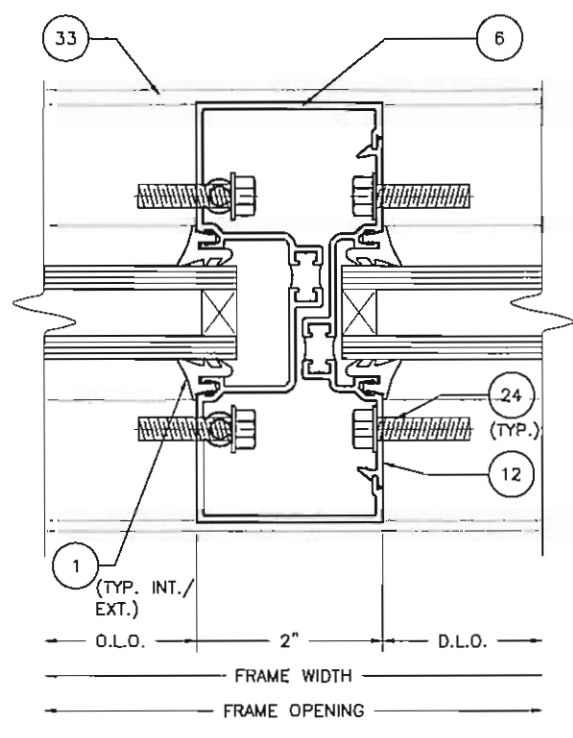


2 STANDARD HORIZONTAL
4 SCALE: 1:2

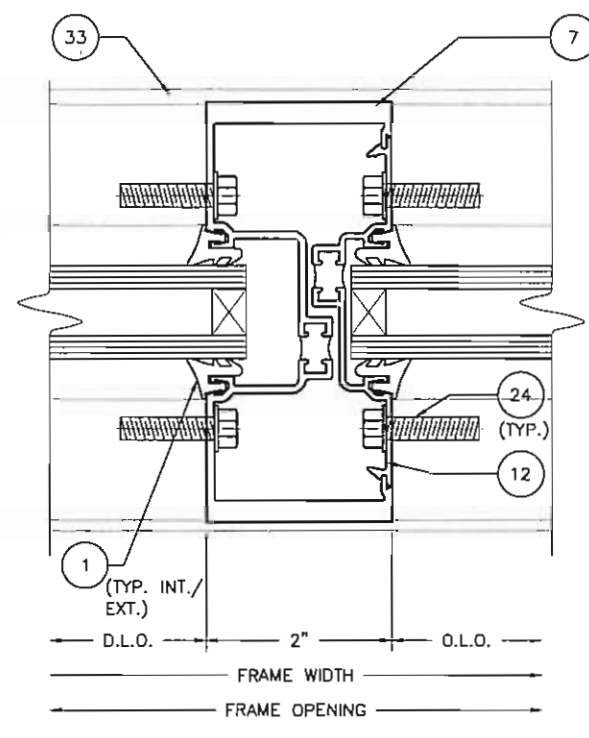


3 STANDARD SILL
4 SCALE: 1:2

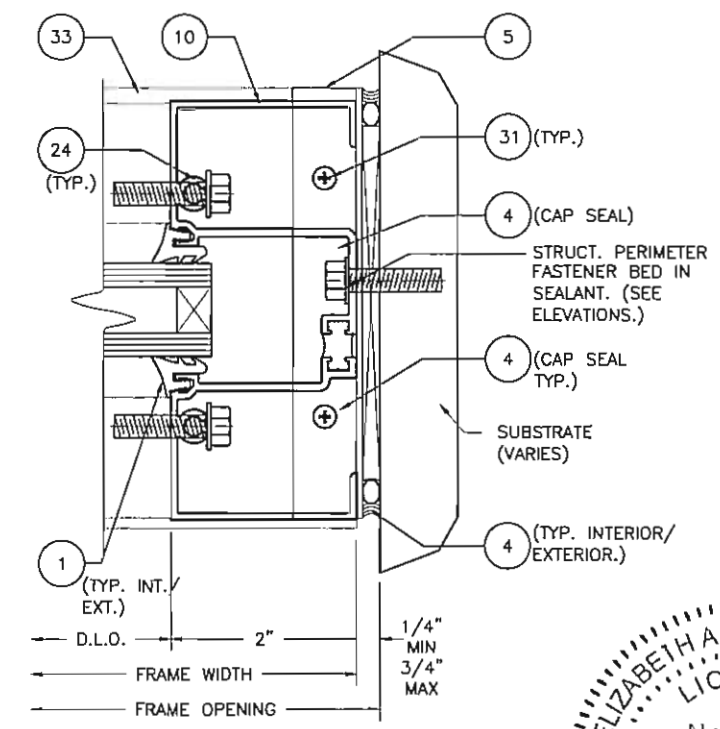
2" FROM VERTICAL OR JAMB AND 12" ON CENTER THEREAFTER



4 STANDARD VERTICAL
4 SCALE: 1:2



5 HEAVY VERTICAL
4 SCALE: 1:2



6 STANDARD JAMB
4 SCALE: 1:2

ELIZABETH A. BROADWAY, P.E.
LICENSE No. 38558
STATE OF FLORIDA
ELIZABETH A. BROADWAY
PROFESSIONAL ENGINEER
FLORIDA REGISTRATION NO. 38558

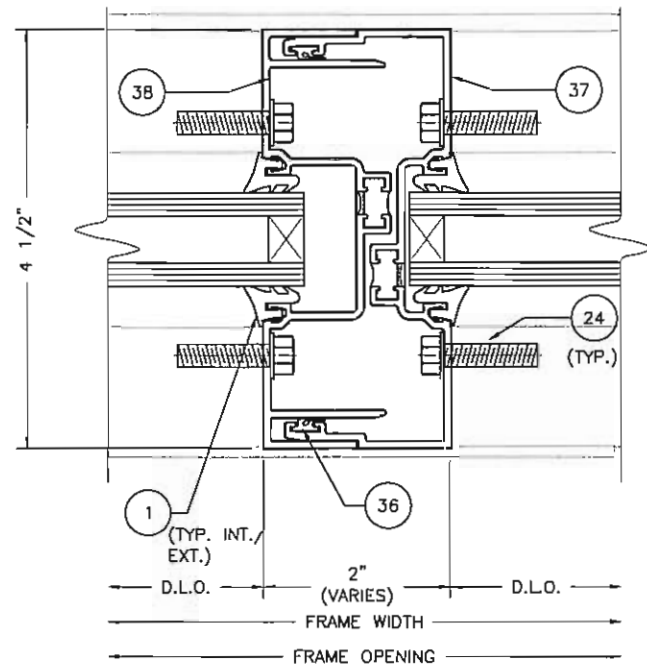
B BROADWAY ENGINEERING, P.A.
CIVIL, MECHANICAL, STRUCTURAL AND BUILDING DESIGN
See Us At www.Broadway-Eng.Com
1335 W. Cass Street
Tampa, Florida 33606 813-251-9244
Fax 813-251-9330 Bus. Email: Info@Broadway-Eng.Com
Cadd. Email: DCorr@Broadway-Eng.Com
BE-4870 Certificate of Authorization No. 4599

REV	BY	DATE	DESCRIPTION

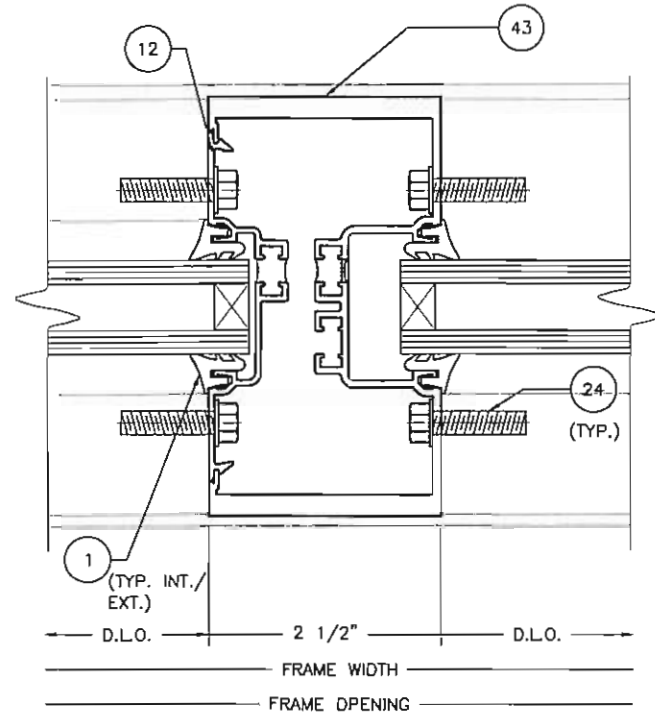
Coral
Architectural Products
3015 RICE MIAMI ROAD, TUSCALOOSA, AL 35406
PHONE 800-772-7727 FAX 800-255-7320

FLORIDA PRODUCT APPROVAL DRAWINGS FOR FL300T
STANDARD FRAMING DETAILS

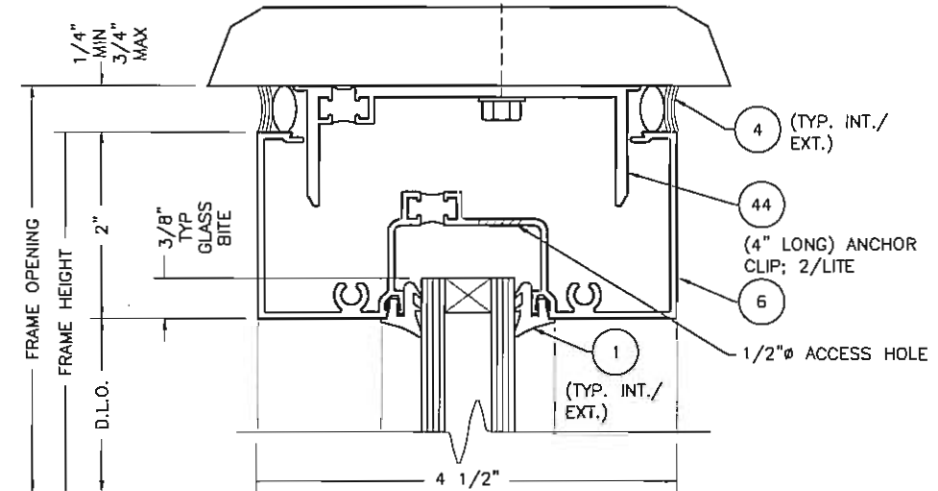
PROJECT NO. FL300T	DATE 3/28/18
DRAWN DEG	APPROVED EAB
CHECKED WS	
SHEET 4 OF 17	



1 EXPANSION MULLION
5 SCALE: 1:2



2 HEAVY WALL WIDE VERTICAL
5 SCALE: 1:2



3 OPTIONAL HEAD
5 SCALE: 1:2

REV	BY	DATE	DESCRIPTION

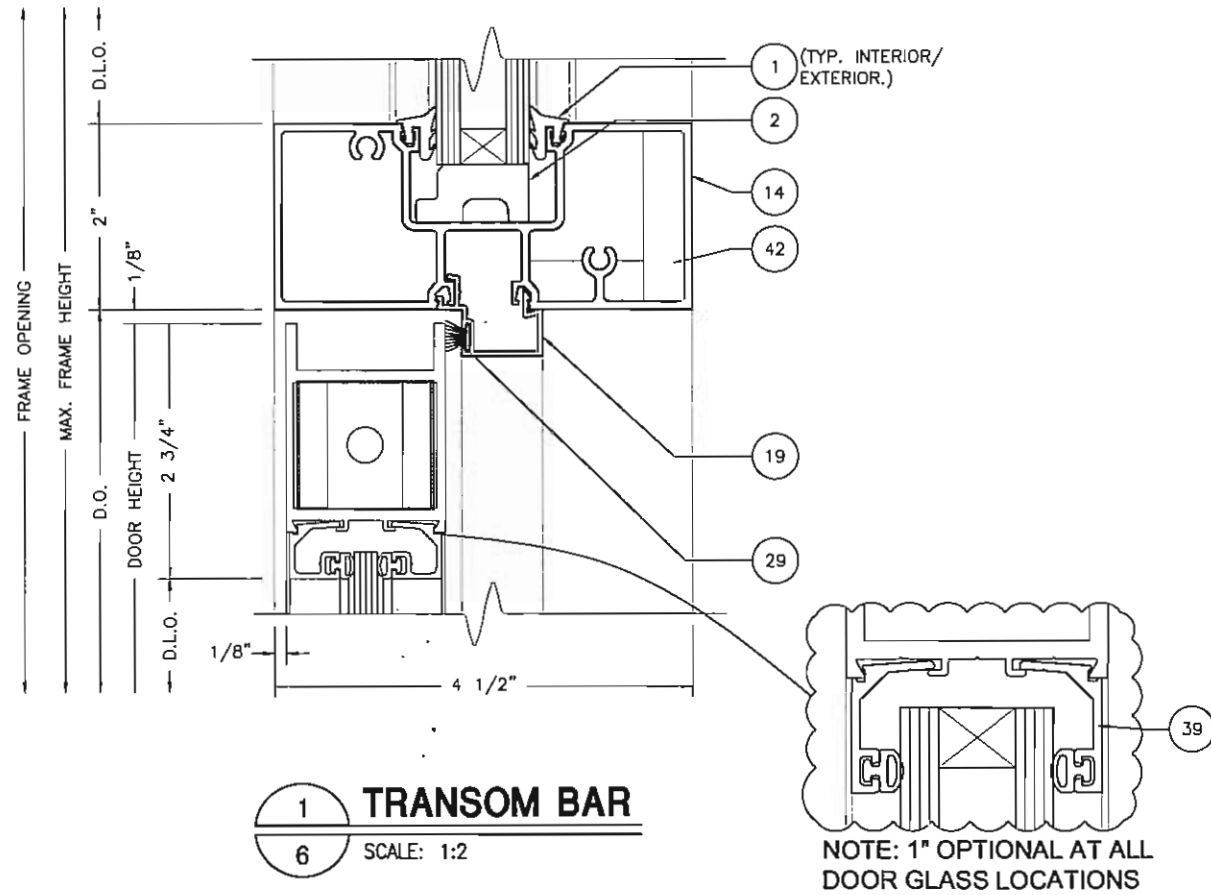
Coral
Architectural Products
3010 RICE AVE ROAD, TUSCALOOSA, AL 35408
PHONE 800-772-7131 FAX 800-255-7330

FLORIDA PRODUCT
APPROVAL DRAWINGS FOR FL300T
STANDARD FRAMING DETAILS

PROJECT NO. FL300T	
DRAWN DEG	DATE 3/28/18
CHECKED WS	APPROVED EAB
SHEET 5 OF 17	

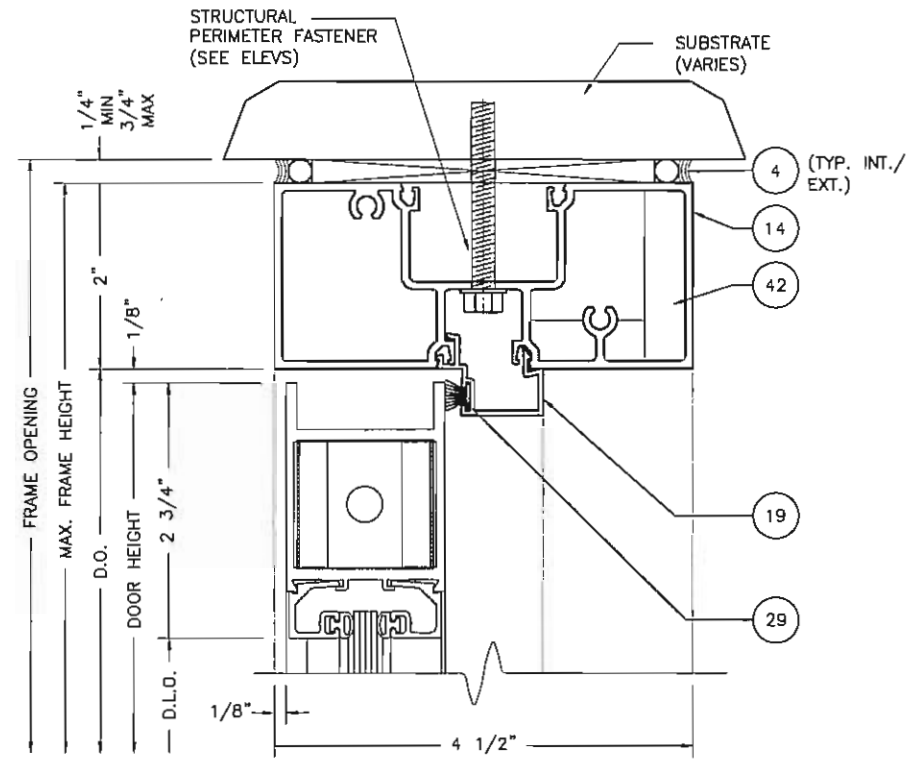
ELIZABETH A. BROADWAY
PROFESSIONAL ENGINEER
FLORIDA REGISTRATION NO. 38558
3/26/18

B BROADWAY ENGINEERING, P.A.
CIVIL, MECHANICAL, STRUCTURAL AND BUILDING DESIGN
See Us At www.Broadway-Eng.Com
1335 W. Cass Street
Tampa, Florida 33606 813-251-9244
Fax 813-251-9330 Bus. Email: Info@Broadway-Eng.Com
Cadd. Email: DCarr@Broadway-Eng.Com
BE-4870 Certificate of Authorization No. 4599



1 **TRANSOM BAR**
6 SCALE: 1:2

NOTE: 1" OPTIONAL AT ALL DOOR GLASS LOCATIONS



2 **DOOR FRAME HEAD**
6 SCALE: 1:2

ELIZABETH A. BROADWAY
 LICENSE
 No. 38555

STATE OF FLORIDA
 ELIZABETH A. BROADWAY
 PROFESSIONAL ENGINEER
 FLORIDA REGISTRATION NO. 38558

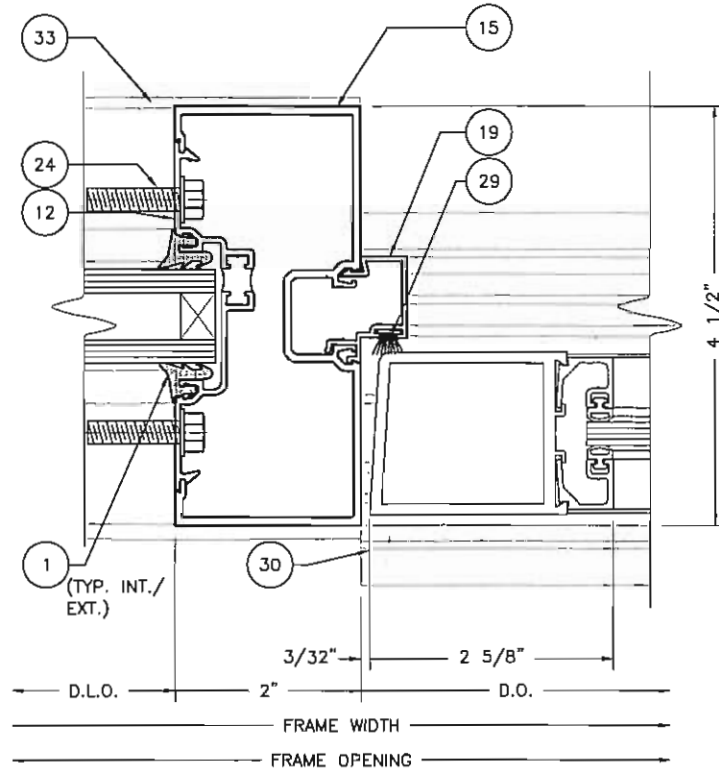
B BROADWAY ENGINEERING, P.A.
 CIVIL, MECHANICAL, STRUCTURAL AND BUILDING DESIGN
 See Us At www.Broadway-Eng.Com
 1335 W. Cass Street
 Tampa, Florida 33606 813-251-9244
 Fax 813-251-9330 Bus. Email: Info@Broadway-Eng.Com
 Cadd. Email: DGarr@Broadway-Eng.Com
 BE-4870 Certificate of Authorization No. 4599

REV	BY	DATE	DESCRIPTION

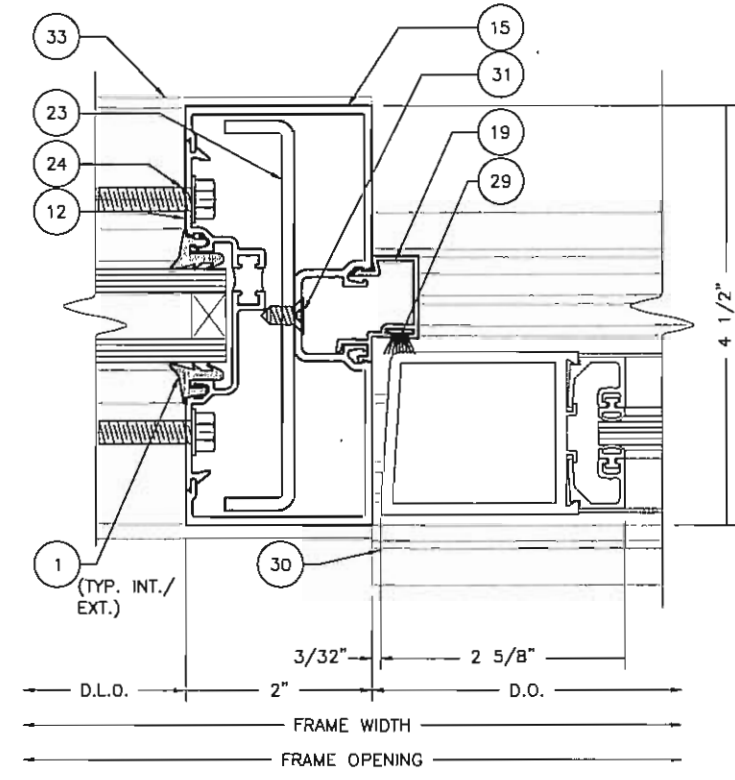
Coral
 Architectural Products
 3010 RICE AVE. ROAD, TUSCALOOSA, AL 35406
 PHONE 800-772-7171 FAX 800-235-7320

FLORIDA PRODUCT
 APPROVAL DRAWINGS FOR FL300T
 DOOR FRAMING DETAILS

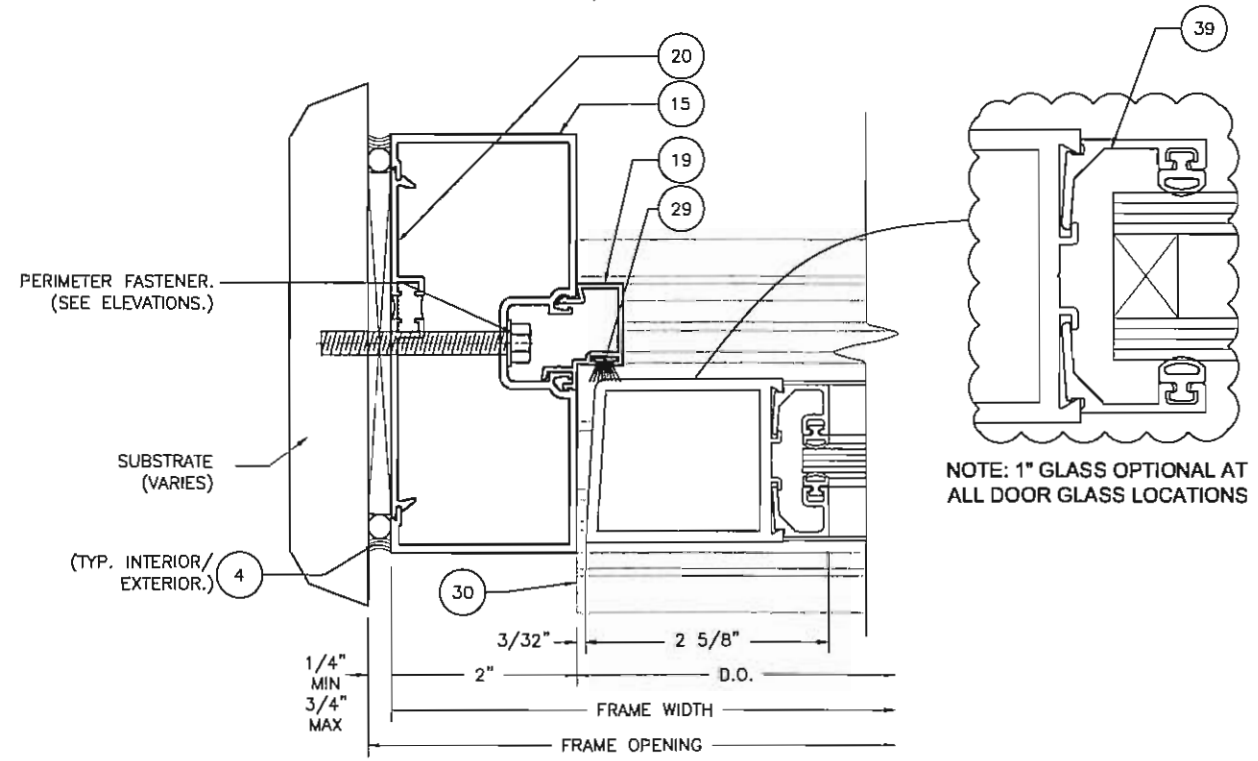
PROJECT NO.	FL300T
DRAWN	DATE
DEG	3/28/18
CHECKED	APPROVED
WS	EAB
SHEET	6 OF 17



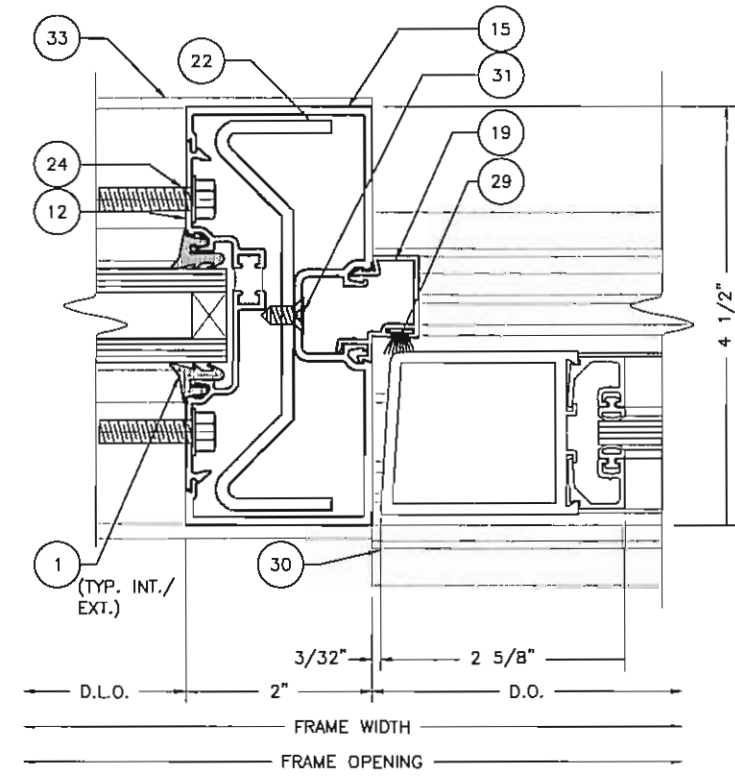
1 INTERM DOOR JAMB
7 SCALE: 1:2



2 INTERM DOOR JAMB W/STEEL
7 SCALE: 1:2



3 DOOR JAMB
7 SCALE: 1:2



4 INTERM DOOR JAMB W/STEEL
7 SCALE: 1:2

ELIZABETH A. BROADWAY
LICENSED PROFESSIONAL ENGINEER
No. 38558
STATE OF FLORIDA
ELIZABETH A. BROADWAY
PROFESSIONAL ENGINEER
FLORIDA REGISTRATION NO. 38558
3/26/14

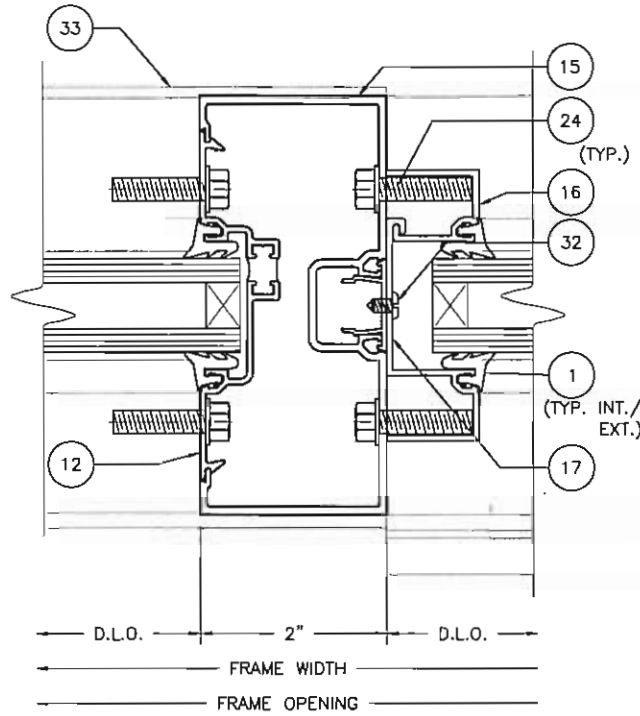
B BROADWAY ENGINEERING, P.A.
CIVIL, MECHANICAL, STRUCTURAL AND BUILDING DESIGN
See Us At www.Broadway-Eng.Com
1335 W. Cass Street
Tampa, Florida 33606 813-251-9244
Fax 813-251-9330 Bus. Email: Info@Broadway-Eng.Com
Cadd. Email: DGarr@Broadway-Eng.Com
BE-4870 Certificate of Authorization No. 4599

REV	BY	DATE	DESCRIPTION

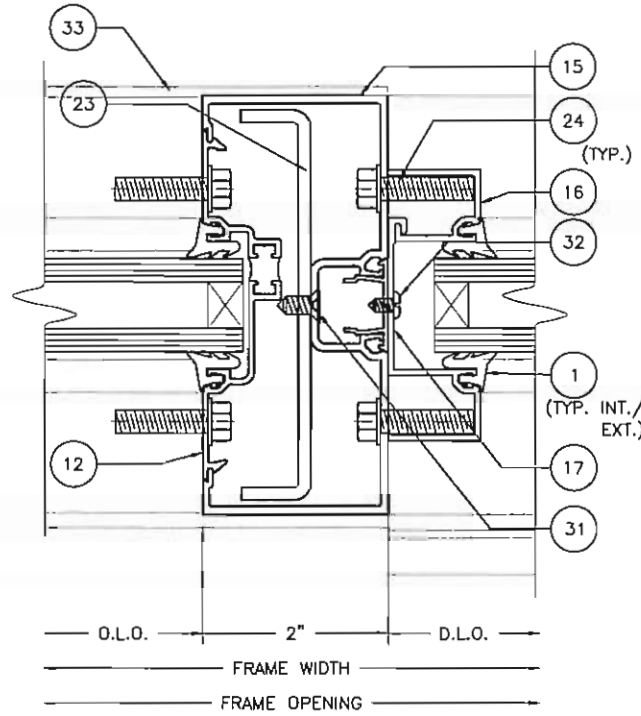
Coral
Architectural Products
3010 RICE MIAMI ROAD, TUSCALOOSA, AL 35408
PHONE 800-772-7727 FAX 800-255-7330

FLORIDA PRODUCT APPROVAL DRAWINGS FOR FL300T
DOOR FRAMING DETAILS

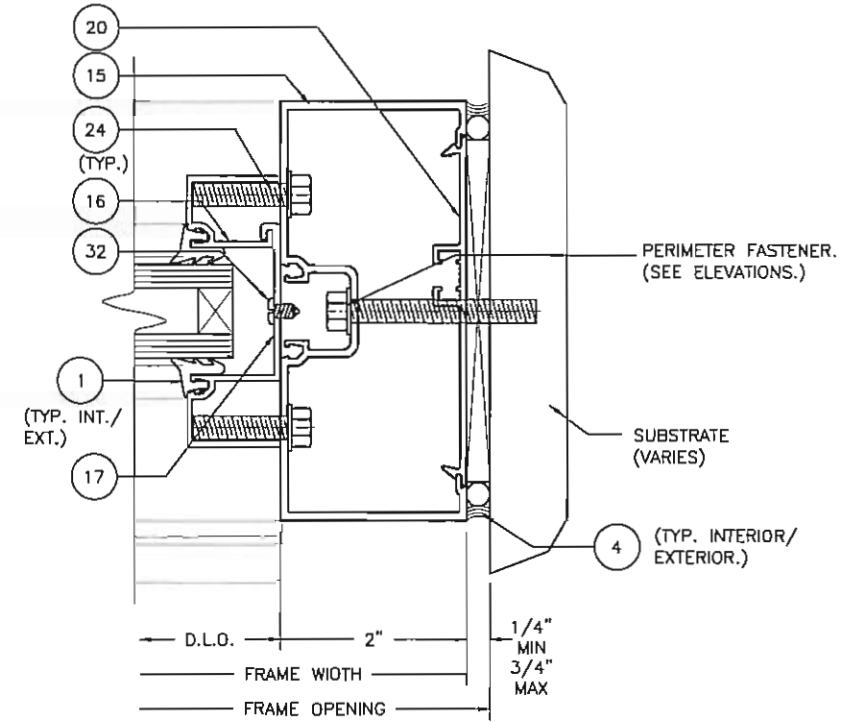
PROJECT NO.	FL300T
DRAWN	DEG
DATE	3/26/14
CHECKED	WS
APPROVED	EAB
SHEET	7 OF 17



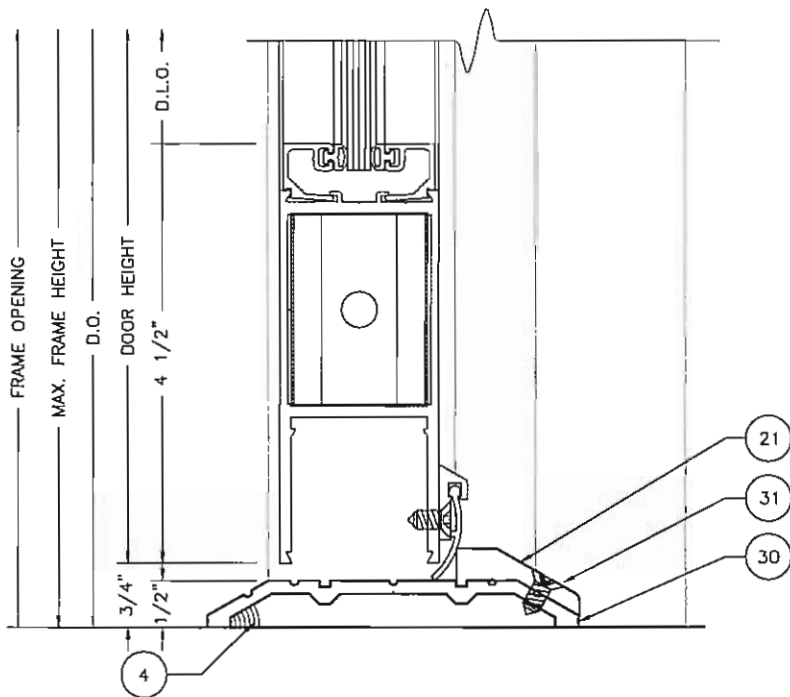
1 **INTERM TRANSOM JAMB**
8 SCALE: 1:2



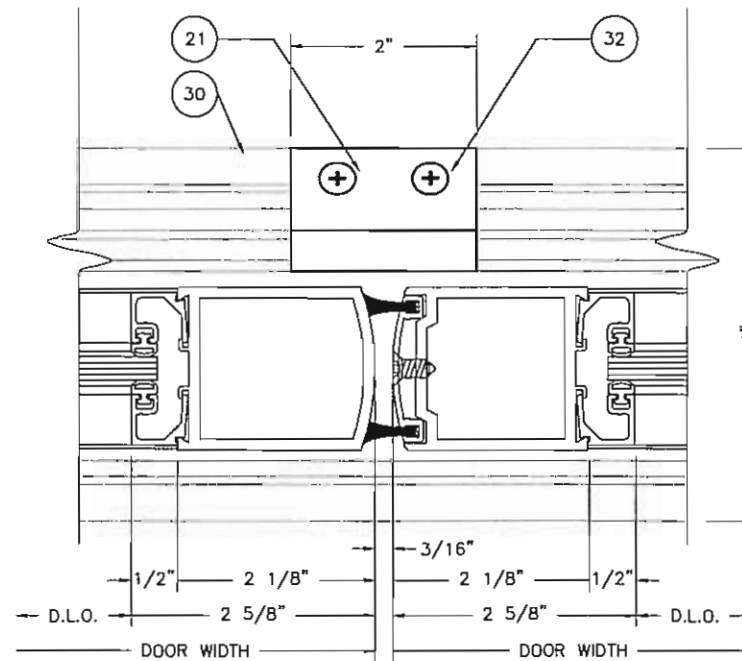
2 **INTERM TRANSOM JAMB W/STEEL**
8 SCALE: 1:2



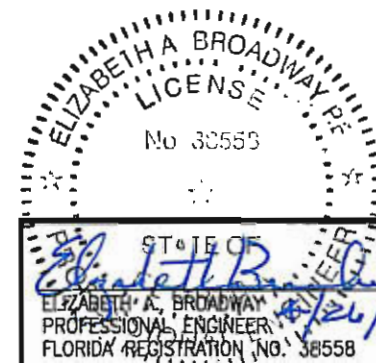
3 **TRANSOM JAMB AT WALL**
8 SCALE: 1:2



4 **THRESHOLD**
8 SCALE: 1:2



5 **MEETING STILES**
8 SCALE: 1:2



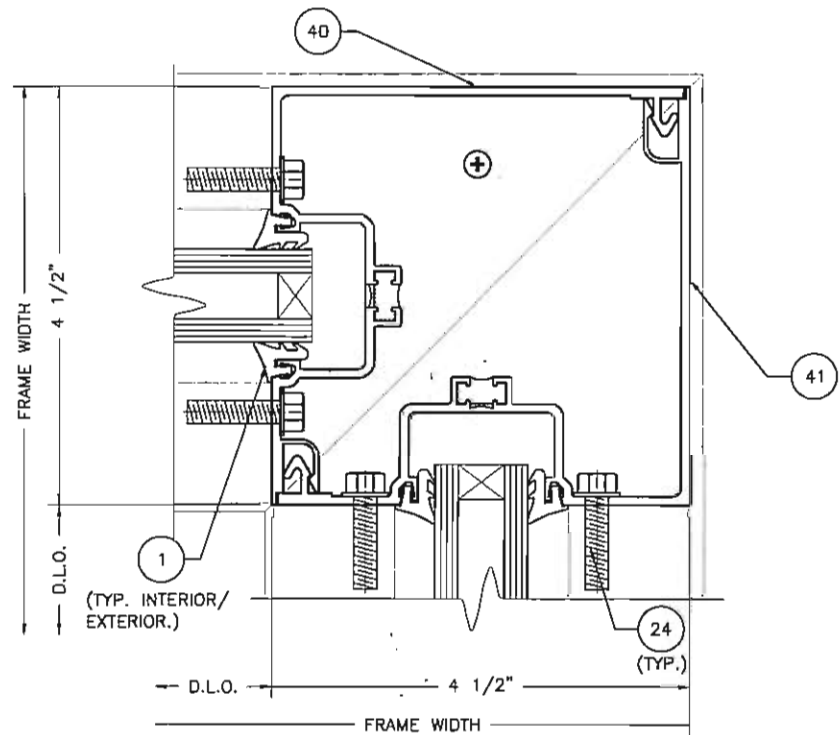
B BROADWAY ENGINEERING, P.A.
 CIVIL, MECHANICAL, STRUCTURAL AND BUILDING DESIGN
 See Us At www.Broadway-Eng.Com
 1335 W. Cass Street
 Tampa, Florida 33606 813-251-9244
 Fax 813-251-9330 Bus. Email: Info@Broadway-Eng.Com
 Cadd. Email: DCarr@Broadway-Eng.Com
 BE-4870 Certificate of Authorization No. 4599

REV	BY	DATE	DESCRIPTION

Coral
 Architectural Products
 3010 RICE BINE ROAD, TUSCALOOSA, AL 35408
 PHONE 800-772-7137 FAX 800-265-1320

FLORIDA PRODUCT
 APPROVAL DRAWINGS FOR FL300T
 DOOR FRAMING DETAILS

PROJECT NO. FL300T	DATE 3/28/18
DRAWN DEG	APPROVED EAB
CHECKED WS	
SHEET 8 OF 17	



1 90 DEGREE CORNER POST
 9 SCALE: 1:2



ELIZABETH A. BROADWAY
 PROFESSIONAL ENGINEER
 FLORIDA REGISTRATION NO. 38558
Elizabeth A. Broadway
 3/26/18

B BROADWAY ENGINEERING, PA
 CIVIL, MECHANICAL, STRUCTURAL AND BUILDING DESIGN
 See Us At www.Broadway-Eng.Com
 1335 W. Cass Street
 Tampa, Florida 33606 813-251-9244
 Fax 813-251-9330 Bus. Email: Info@Broadway-Eng.Com
 Cadd. Email: DGarr@Broadway-Eng.Com
 BE-4870 Certificate of Authorization No. 4599

REV	BY	DATE	DESCRIPTION

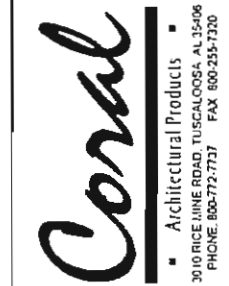


FLORIDA PRODUCT
 APPROVAL DRAWINGS FOR FL300T
 CORNER FRAMING DETAILS

PROJECT NO.	FL300T
DRAWN	DATE
DEG	3/28/18
CHECKED	APPROVED
WS	EAB
SHEET	
9 OF 17	

BILL OF MATERIALS

ITEM NO.	P/N	DESCRIPTION	DIMENSIONS	MATERIAL	MANUFACTURER	NOTES
1	NG1	GLAZING GASKET	.197 SPACE	EPDM	VARIES	USED ON EXT. AND INT.
2	SB3	SETTING BLOCK	1.50 X 4.00 X .625	EPDM	VARIES	(2) EACH PER LITE OF GLASS. MEETS ASTM C864
3	WD300-1	WATER DEFLECTOR	VARIABLE SPACE	RIGID PVC	CORAL	LOCATE ONE AT EACH END OF INTERMEDIATE
4	795	JOINT/PERIMETER SEALANT	VARIABLE SPACE	SILICONE	DOW OR TREMCO	
5	ED340-1	END DAM	2.688 X 4.788 X .062	6063-T6 ALUMINUM	CORAL	USED AT ENDS OF SUBSILL
6	FL334T	VERTICAL MULLION/JAMB	2.00 X 4.5 X .070	6063-T6 ALUMINUM	CORAL	
7	FL316T	HEAVY VERTICAL MULLION	2.00 X 4.5 X .190	6063-T6 ALUMINUM	CORAL	
8	FL326T	HORIZONTAL MULLION	2.00 X 4.460 X .070	6063-T6 ALUMINUM	CORAL	
9	FL303	GLASS STOP	1.207 X 1.543 X .050	6063-T6 ALUMINUM	CORAL	
10	FL321T	HEAD/WALL JAMB	2.00 X 4.5 X .070	6063-T6 ALUMINUM	CORAL	
11	FL322T	SILL/HEAD	2.00 X 4.460 X .070	6063-T6 ALUMINUM	CORAL	
12	FL325T	OPEN BACK POCKET FILLER	.852 X 3.75 X .062	6063-T6 ALUMINUM	CORAL	
13		NOT USED				
14	FL307	DOOR HEADER	2.00 X 4.500 X .085	6063-T6 ALUMINUM	CORAL	
15	FL309	DOOR JAMB	2.00 X 4.500 X .080	6063-T6 ALUMINUM	CORAL	
16	FL518	TRANSOM SASH	.7670 X 1.00 X .063	6063-T6 ALUMINUM	CORAL	
17	CS115	TRANSOM SASH	2.391 X 1.00 X .063	6063-T6 ALUMINUM	CORAL	
18	CS105	POCKET FILLER	.480 X 1 X .040	6063-T6 ALUMINUM	CORAL	
19	DS200	DOOR STOP	.500 X 1.019 X .050	6063-T6 ALUMINUM	CORAL	
20	CS104T	FLAT FILLER	3.750 X .360 X .070	6063-T6 ALUMINUM	CORAL	
21	DP200-1	PANIC STOP	1.323 X .402 X .188	6063-T6 ALUMINUM	CORAL	FABRICATED LENGTH = 2.00"
25	SR101	10GA A-36 STL	1.25 X 4.18 X .134	PRIMED STEEL	VARIES	USED AT DOOR JAMB AS REQUIRED
23	SR102	10GA A-36 STL	.75 X 4.188 X .134	PRIMED STEEL	VARIES	USED AT DOOR JAMB AS REQUIRED
24	AS16	TYPICAL SPLINE SCREW	#4 X 1" HHSTS	STEEL	VARIES	TYPICAL SPLINE SCREW
25		NOT USED				
26		NOT USED				
27		NOT USED				
28		NOT USED				
29	WOOL PILE	DOOR STOP WEATHERING	.125 SPACE	WOOL	VARIES	
30	TH4	THRESHOLD	.50 X 4.00 X .125	6063-T6 ALUMINUM	CORAL	
31	AS5	FASTENER	310 X 1/2" PFH	STEEL	VARIES	
32	AS90	FASTENER	#10 X 16 X 1/2" HWH TEK	ZINC PLATED	VARIES	ATTACH SILL TO SUBSILL
33	FL340T	SUBSILL	2.500 X 4.788 X .093	6063-T6 ALUMINUM	CORAL	
34	CS118	MALE HEAD RECEPTOR	1.531 X 1.465 X .062	6063-T6 ALUMINUM	CORAL	
35	CS119T	FEMALE HEAD RECEPTOR	4.786 X 1.562 X .062	6063-T6 ALUMINUM	CORAL	
36	VG10	GASKET	.197 SPACE	EPDM	VARIES	
37	FL310T	MALE EXPANSION MULLION	4.5 X 1.787 X .078	6063-T6 ALUMINUM	CORAL	
38	FL311T	FEMALE EXPANSION MULLION	4.5 X 1.368 X .078	6063-T6 ALUMINUM	CORAL	
39	DG101	DOOR GLASS STOP	.8604 X .539 X .055	6063-T6 ALUMINUM	CORAL	
40	FL353T	CORNER POST	4.5 X 4.5 X .093	6063-T6 ALUMINUM	CORAL	
41	FL351T	CORNER POST	4.5 X 4.5 X .093	6063-T6 ALUMINUM	CORAL	
42	SM5601	JOINT TAPE			VARIES	USED AT ALL HORIZONTAL INTERSECTIONS
43	FL346	HEAVY WALL WIDE VERTICAL	2.5 X 4.5 X .23	6063-T6 ALUMINUM	CORAL	
44	CS300T-1	ANCHOR CLIP	3.73 X 1.295 X .125	6063-T6 ALUMINUM	CORAL	

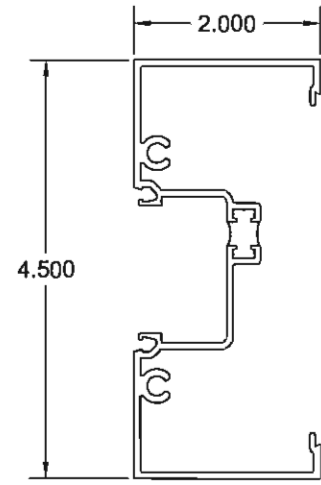


FLORIDA PRODUCT APPROVAL DRAWINGS FOR FL300T
 BILL OF MATERIALS

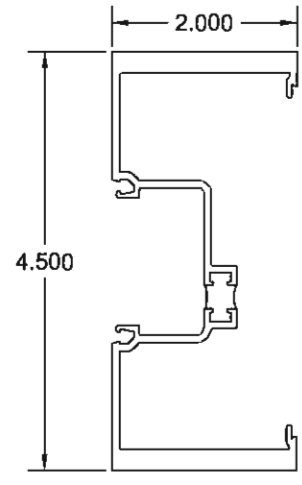
ELIZABETH A. BROADWAY
 PROFESSIONAL ENGINEER
 FLORIDA REGISTRATION NO. 38558

B BROADWAY ENGINEERING, P.A.
 CIVIL, MECHANICAL, STRUCTURAL AND BUILDING DESIGN
 See Us At www.Broadway-Eng.Com
1335 W. Cass Street
Tampa, Florida 33606 813-251-9244
 Fax 813-251-9330 Bus. Email: Info@Broadway-Eng.Com
 Cadd. Email: DGorri@Broadway-Eng.Com
 BE-4870 Certificate of Authorization No. 4599

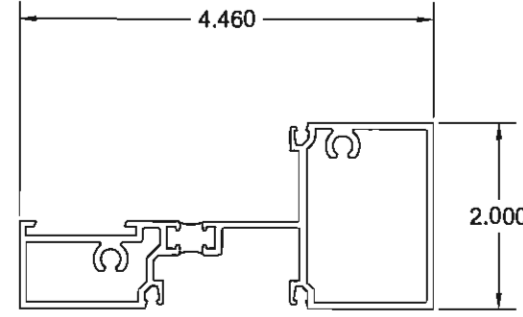
PROJECT NO.	FL300T
DRAWN	DEG
DATE	3/28/18
CHECKED	WS
APPROVED	EAB
SHEET	10 OF 17



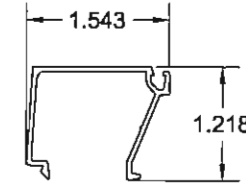
6 VERTICAL MULLION



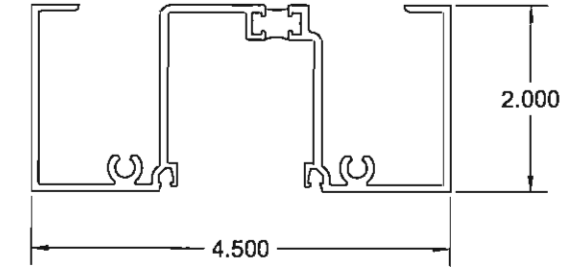
7 HEAVY WALL VERTICAL



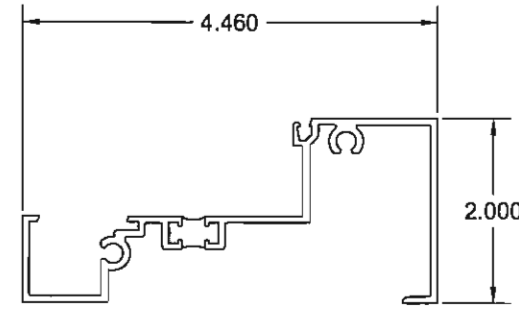
8 HORIZONTAL



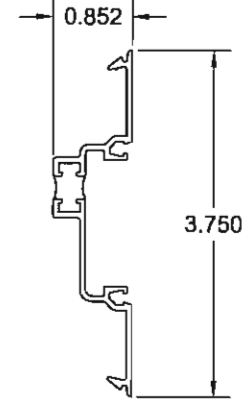
9 GLASS STOP



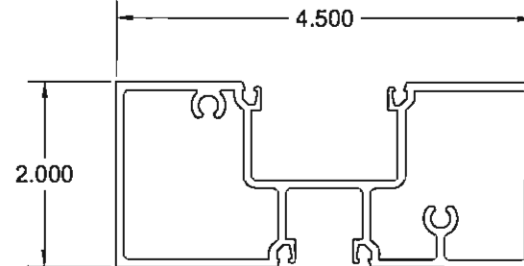
10 HEAD/WALL JAMB



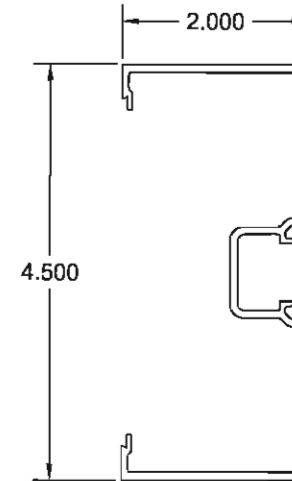
11 SILL



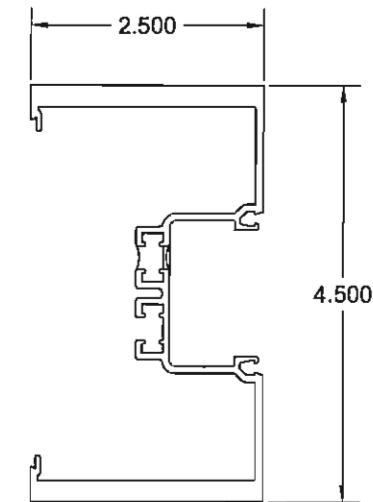
12 OPEN BACK MULLION FILLER



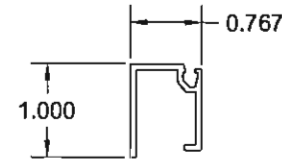
14 DOOR HEAD



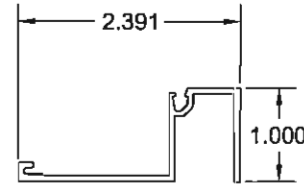
15 DOOR JAMB



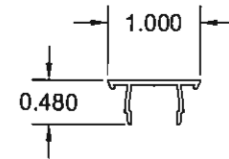
43 HEAVY WALL WIDE VERTICAL



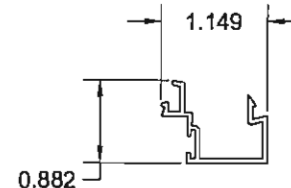
16 SASH



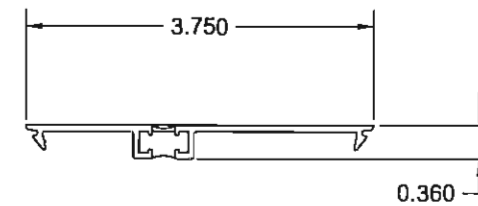
17 SASH



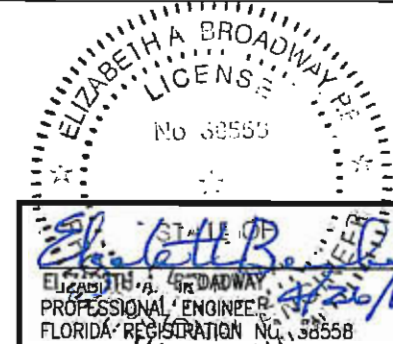
18 POCKET FILLER



19 DOOR STOP



20 FILLER



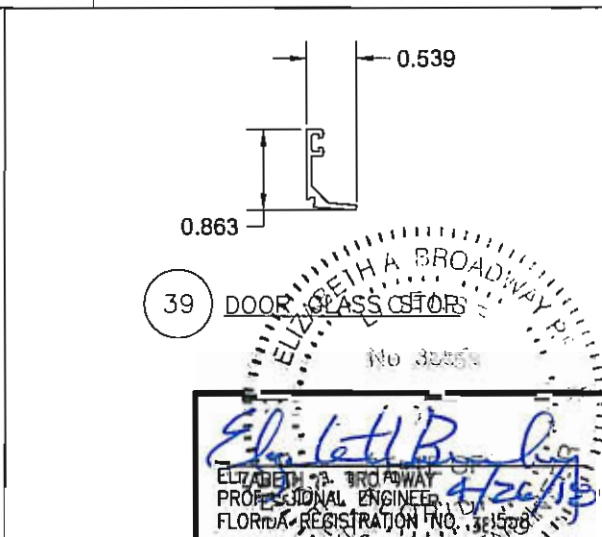
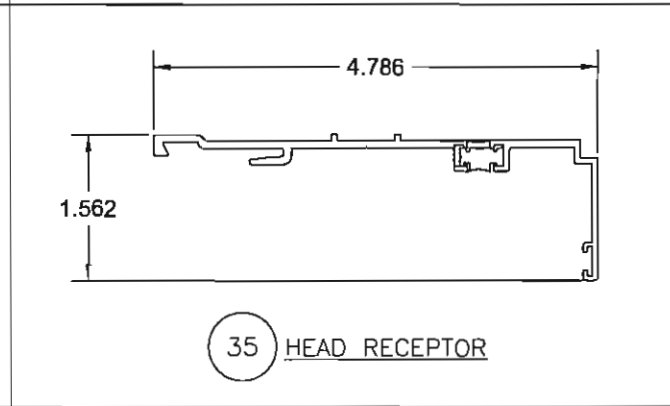
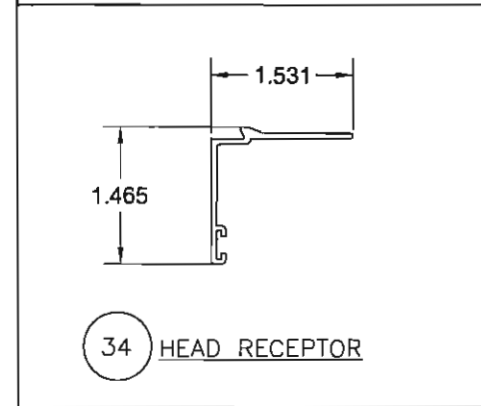
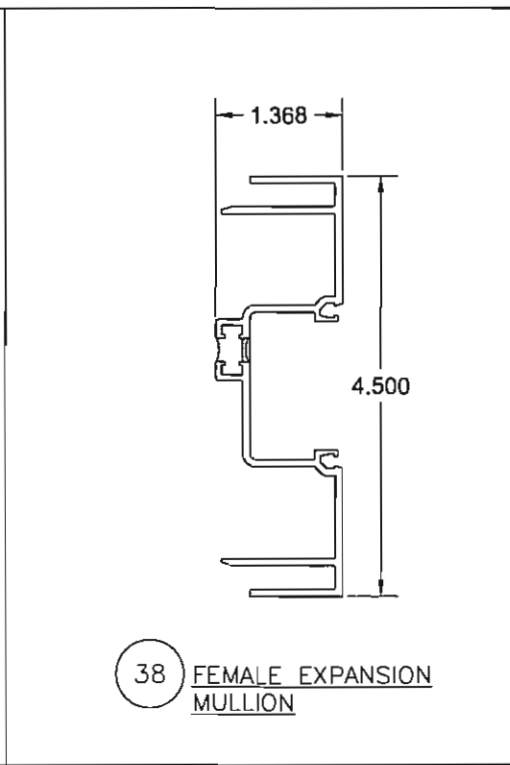
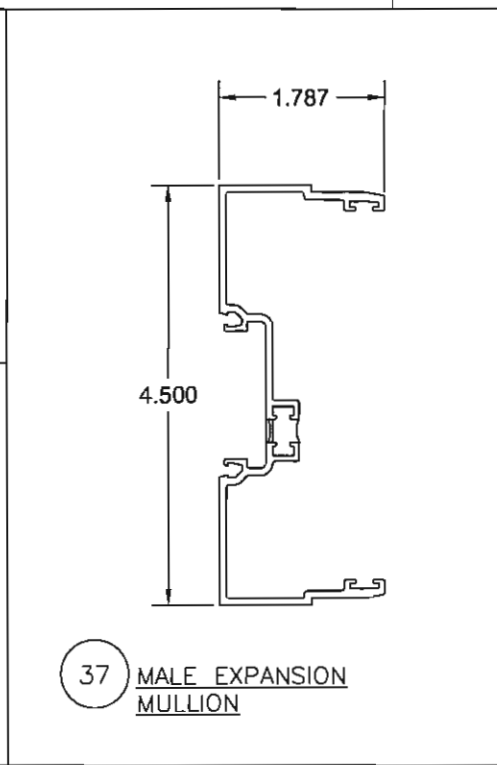
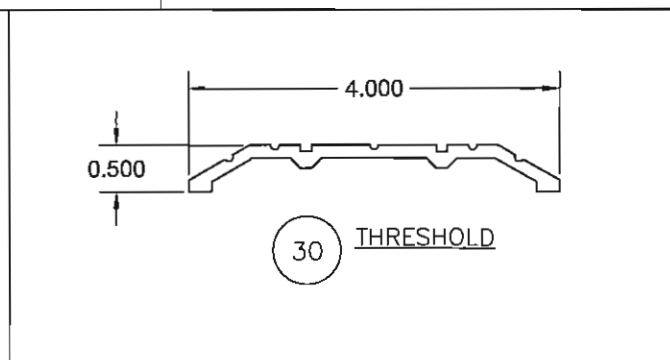
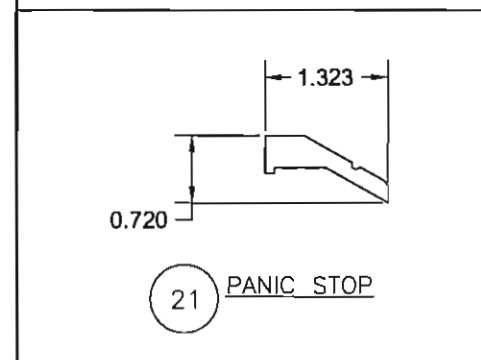
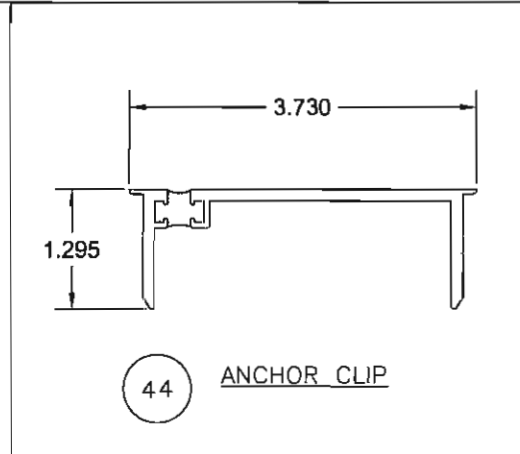
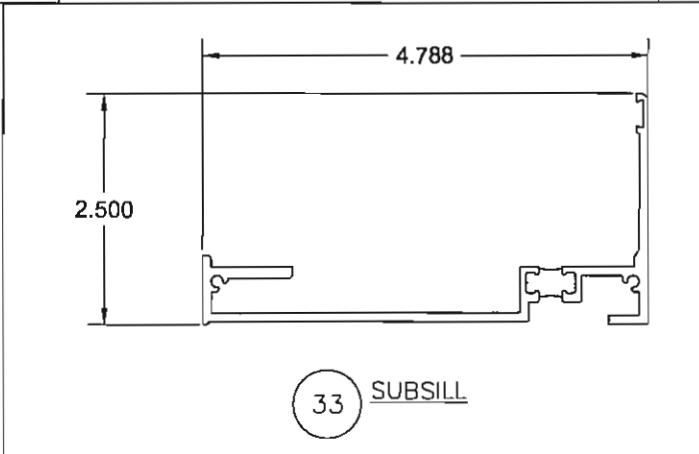
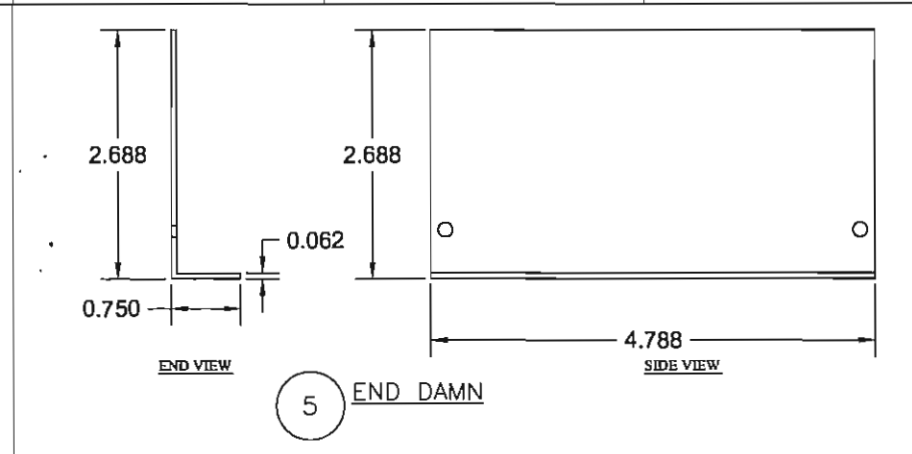
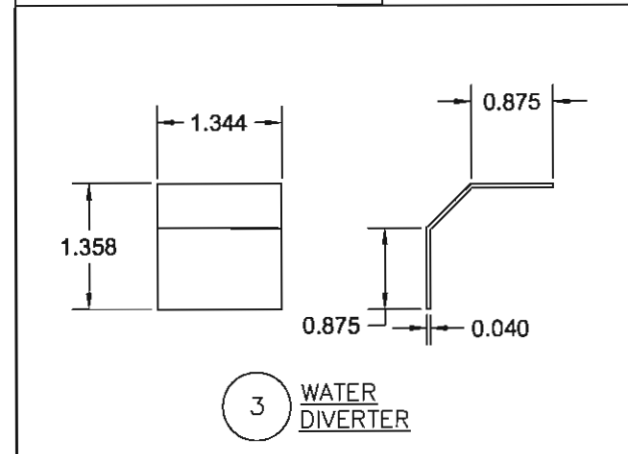
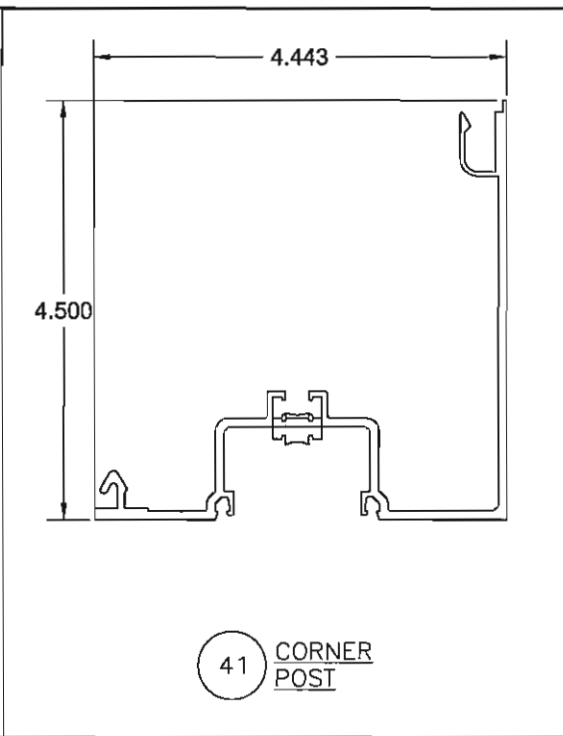
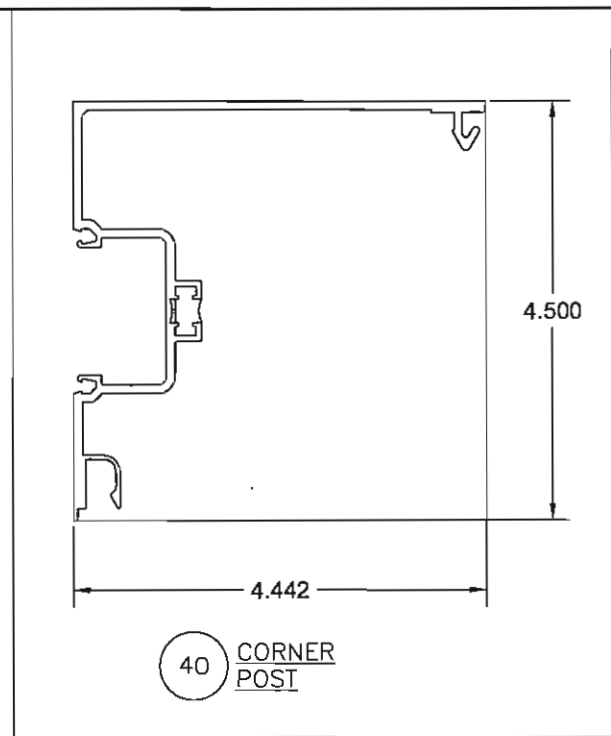
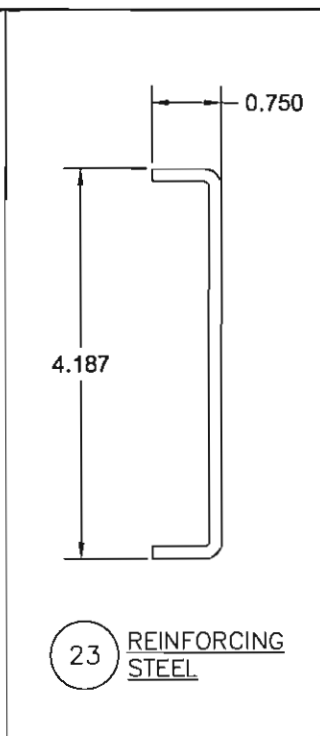
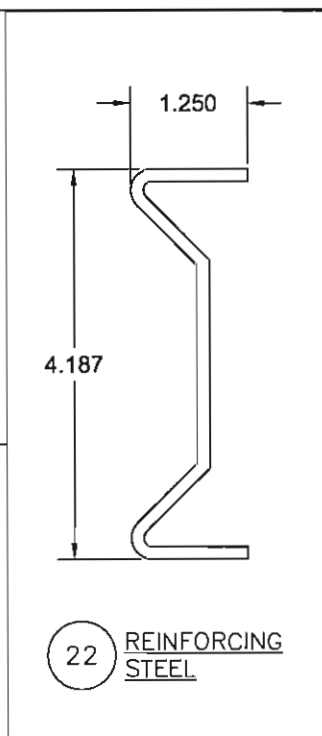
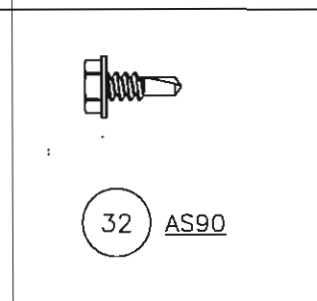
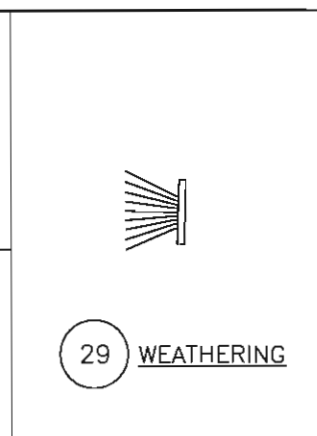
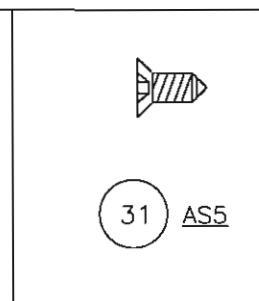
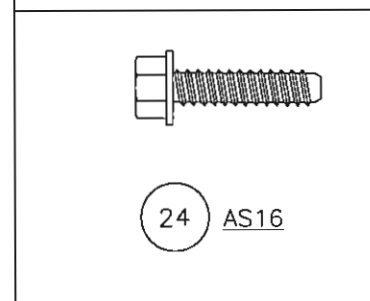
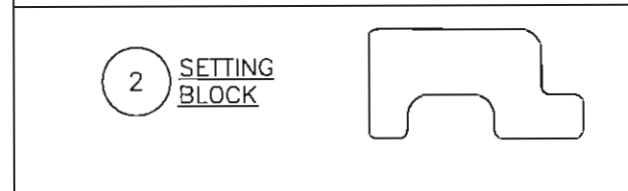
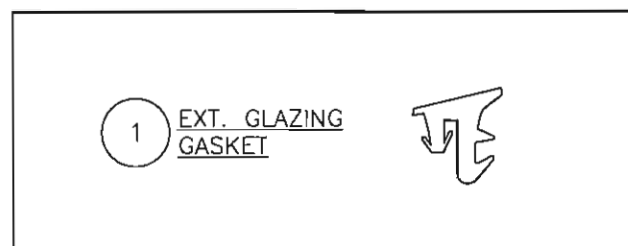
B BROADWAY ENGINEERING, PA
CIVIL, MECHANICAL, STRUCTURAL AND BUILDING DESIGN
See Us At www.Broadway-Eng.Com
1335 W. Cass Street
Tampa, Florida 33606 813-251-9244
Fax 813-251-9330 Bus. Email: Info@Broadway-Eng.Com
Cadd. Email: DCarr@Broadway-Eng.Com
BE-4870 Certificate of Authorization No. 4599

REV	BY	DATE	DESCRIPTION

Coral
Architectural Products
3010 RICE MIKE ROAD, TUSCALOOSA, AL 35408
PHONE 800-772-7327 FAX 800-355-7320

FLORIDA PRODUCT APPROVAL DRAWINGS FOR FL300T
DIE DRAWINGS

PROJECT NO. FL300T
DRAWN DEG DATE 3/28/18
CHECKED W/S APPROVED EAB
SHEET 11 OF 17



BROADWAY ENGINEERING, PA
 CIVIL, MECHANICAL, STRUCTURAL AND BUILDING DESIGN
 See Us At www.Broadway-Eng.Com
 1335 W. Casa Street
 Tampa, Florida 33606 813-251-9244
 Fax 813-251-9330 Bus. Email: Info@Broadway-Eng.Com
 Cadd. Email: DGott@Broadway-Eng.Com
 BE-4870 Certificate of Authorization No. 4599

PROJECT NO.		FL300T
DRAWN	DATE	3/22/18
CHECKED	APPROVED	EAB
SHEET	12 OF 17	

REV. BY | **DATE**

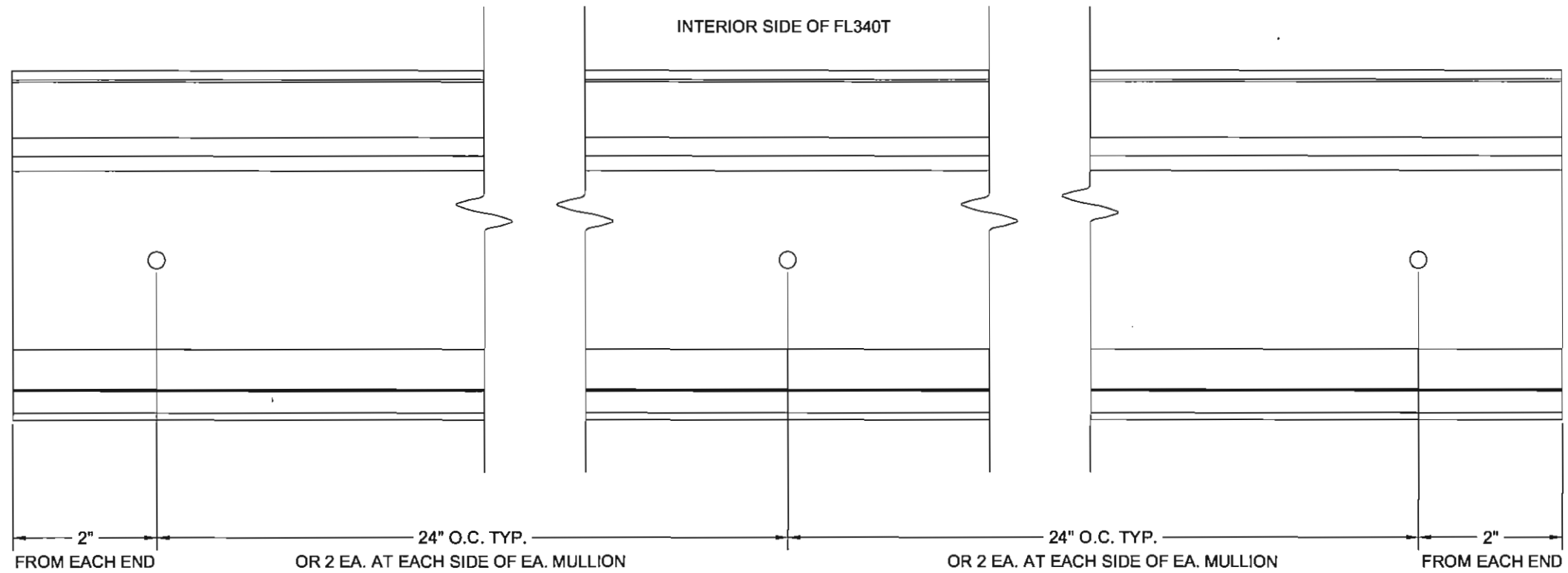
DESCRIPTION		

Coral
 Architectural Products
 3010 RICE MINE ROAD, YUSCALOOSA, AL 35406
 PHONE 800-772-7727 FAX 800-255-7320

FLORIDA PRODUCT APPROVAL DRAWINGS FOR FL300T

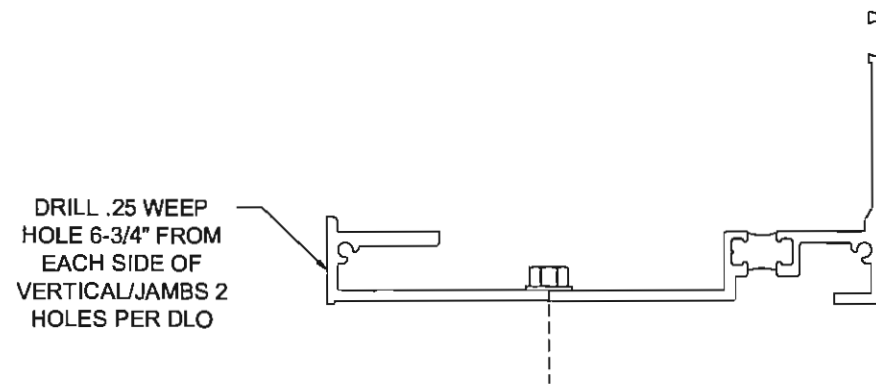
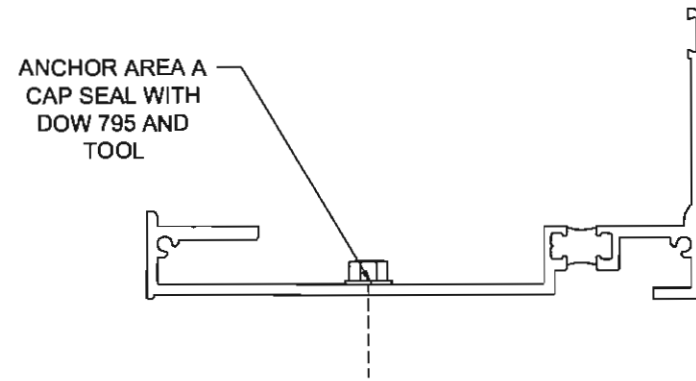
DIE DRAWINGS

ELIZABETH A. BROADWAY
 No. 30554
 ELIZABETH A. BROADWAY
 PROFESSIONAL ENGINEER
 FLORIDA REGISTRATION NO. 3016720



REFERENCE CHART BELOW FOR ANCHOR LOCATIONS

SUBSILL ANCHORING



FL340 AND FL340T ANCHOR TYPES		
SUBSTRATE	ANCHOR TYPE	LENGTH BASED ON 1/2" SHIM SPACE
WOOD 3" THICK	#14 WOOD SCREW	2-1/2"
CONCRETE MIN 3000 PSI	1/4" HEX HEAD TAPCON OR EQUAL	3"
STEEL STUD MIN 18 GA	#14 PH OR HH TEK SCREW	2"
STEEL HOT ROLLED MIN 1/8"	#14 PH OR HH TEK SCREW	2"
STEEL HOT ROLLED MIN 1/8"	1/4" TYPE F OR STANDARD SAE AND TAP	2"

ELIZABETH A. BROADWAY, P.E.
 LICENSE
 No. 38559
Elizabeth A. Broadway
 ELIZABETH A. BROADWAY
 PROFESSIONAL ENGINEER
 FLORIDA REGISTRATION NO. 38558

B BROADWAY ENGINEERING, PA
 CIVIL, MECHANICAL, STRUCTURAL AND BUILDING DESIGN
 See Us At www.Broadway-Eng.Com
 1335 W. Cass Street
 Tampa, Florida 33606 813-251-9244
 Fax 813-251-9330 Bus. Email: Info@Broadway-Eng.Com
 Cadd. Email: DGarr@Broadway-Eng.Com
 BE-4870 Certificate of Authorization No. 4599

REV	BY	DATE	DESCRIPTION



FLORIDA PRODUCT APPROVAL DRAWINGS FOR FL300T
 SUBSILL ANCHORING

PROJECT NO. FL300T
 DRAWN DEG DATE 3/28/18
 CHECKED WS APPROVED EAB
 SHEET
 13 OF 17

PERIMETER FASTENERS:

1. TYPICAL INSTALLATION INTO SUBSTRATES
 - A. 3000 PSI CONCRETE
 - B. STEEL, 18 GA. MIN.
 - C. HOT ROLLED STEEL, 1/8" MIN. THICKNESS
 - D. SO. PINE, GRADE NO. 2 OR BETTER

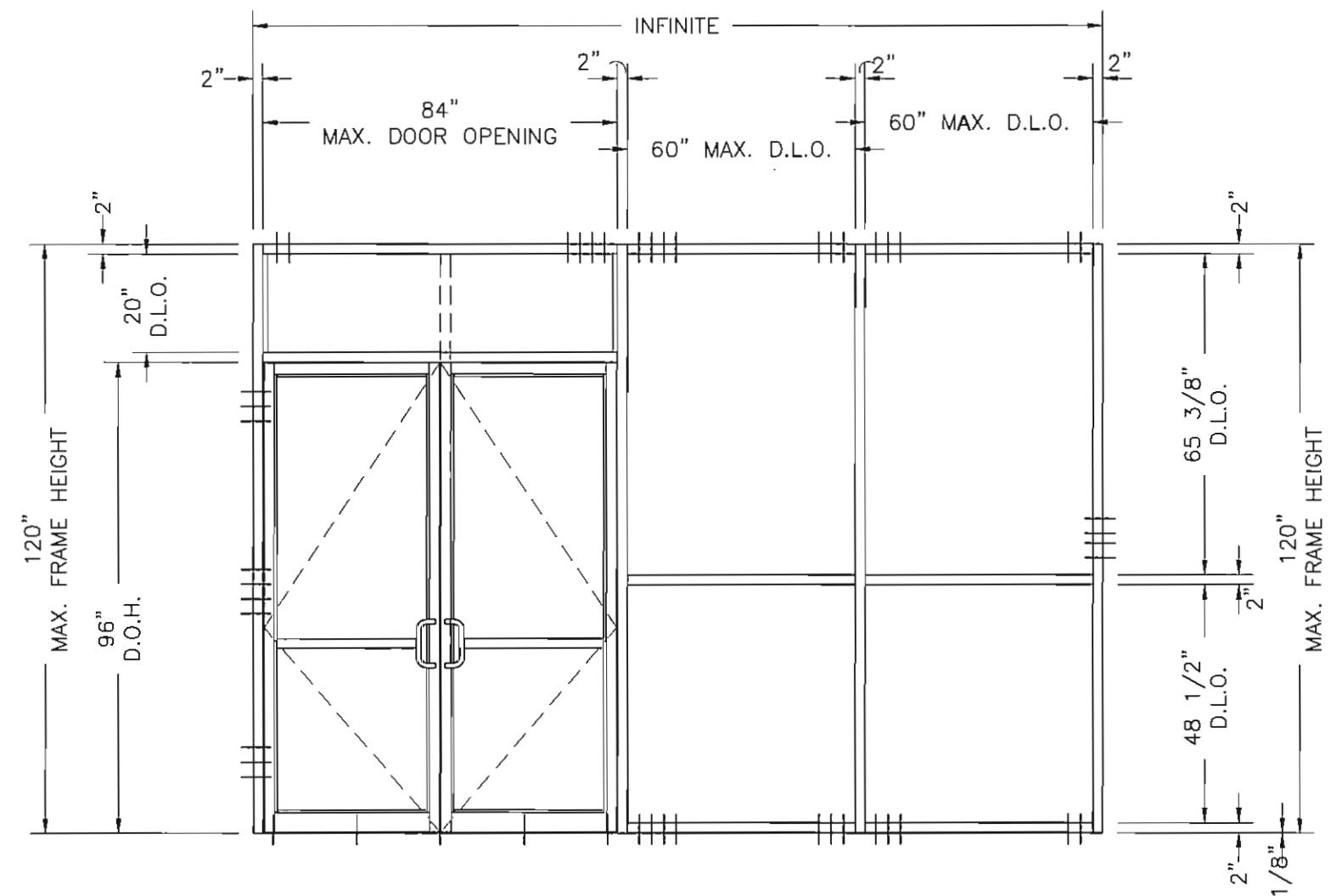
2. FIRST ANCHOR IS 2" FROM EDGE OF VERTICAL. EACH ADDITIONAL FASTENER IS AT REQUIRED MIN. SPACING.

ANCHOR LENGTHS ARE SHOWN TO MEET MINIMUM EMBEDMENT.

DOOR PAIR DEPICTED, SINGLE DOORS QUALIFIED BY SAME.

FOR DOOR FRAMES WITHOUT SIDELITES, ANCHORING SHALL BE DUPLICATED ON BOTH JAMBS AS SHOWN (PAIRS AND/ OR SINGLES).

HEAD AND SILL
 #14 X 3" WOOD SCREWS WITH 2" MIN. EMBEDMENT, 1-3/4" MIN. EDGE DISTANCE. LOCATE FIRST ANCHOR 2" FROM EDGE OF MULLION AND ADDITIONAL FASTENERS @ 3" MIN. SPACING.



DOOR FRAME JAMB ANCHORS #14 X 3" PAN OR HEX HEAD WOOD SCREW	
LOCATION	SPACING
FROM BOTTOM OF FRAME (3) TOTAL	11-1/2", 14-1/2", 17-1/2"
FROM CENTERLINE (4) TOTAL	1-1/2", 4-1/2" ABOVE CENTERLINE 1-1/2", 4-1/2" BELOW CENTERLINE
FROM BOTTOM OF DOOR HEADER (3) TOTAL	11-1/2", 14-1/2", 17-1/2"

NOTE:
 DOOR FRAMES WITH AND WITHOUT TRANSOM SHALL BE ANCHORED AS SHOWN ON CHART ABOVE.

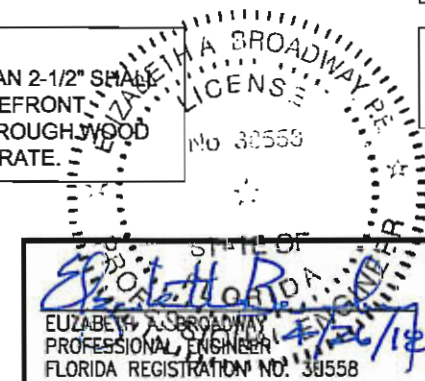
THRESHOLD ANCHORS 1/4" X 2-1/2" FHP TAPCON OR EQUAL - 1-3/4" MINIMUM EMBEDMENT, 2-1/2" MIN. EDGE DISTANCE	
SINGLE DOORS UP TO 48" (3 ANCHORS TOTAL)	(1) EACH 4" FROM EACH JAMB
	(1) EACH AT CENTER LINE OF DOOR OPENING
PAIRS DOORS UP TO 96" (5 ANCHORS TOTAL)	(1) EACH AT 4" FROM EACH JAMB
	(1) EACH AT CENTER LINE OF DOOR OPENING
	(1) EACH BETWEEN CENTER LINE AND JAMB ANCHORS

**WOOD SUBSTRATE - 3" THICK
 ANCHOR LOCATIONS**

JAMB
 #14 X 3" WOOD SCREWS WITH 2" MIN. EMBEDMENT, 1-3/4" MIN. EDGE DISTANCE. LOCATE (1) ANCHOR @ 1-1/2" ABOVE AND BELOW CENTERLINE AND ADDITIONAL FASTENERS @ 3" MIN. SPACING.

NOTE:
 MULLION JAMB ANCHORS MAY BE OMITTED FOR HEIGHTS LESS THAN 9'-0"

NOTE:
 WOOD FRAMING THAT IS LESS THAN 2-1/2" SHALL BE CONSIDERED BLOCKING. STOREFRONT FRAMING SHALL BE FASTENED THROUGH WOOD INTO STEEL OR CONCRETE SUBSTRATE.



BROADWAY ENGINEERING, P.A.
 CIVIL, MECHANICAL, STRUCTURAL AND BUILDING DESIGN
 See Us At www.Broadway-Eng.Com
 1335 W. Cass Street
 Tampa, Florida 33606 813-251-9244
 Fax 813-251-9330 Bus. Email: info@Broadway-Eng.Com
 Cadd. Email: DGarr@Broadway-Eng.Com
 BE-4870 Certificate of Authorization No. 4599

PROJECT NO.	FL300T
DRAWN	DEF
DATE	3/28/18
CHECKED	W5
APPROVED	EAB
SHEET	14 OF 17

FLORIDA PRODUCT APPROVAL DRAWINGS FOR FL300T
 WOOD FASTENER LOCATIONS
Corral Architectural Products
 3010 RICE MIKE ROAD, TUSCALOOSA, AL 35408
 PHONE 800-772-7737 FAX 800-235-1330

PERIMETER FASTENERS:

1. TYPICAL INSTALLATION INTO SUBSTRATES
 - A. 3000 PSI CONCRETE
 - B. STEEL, 18 GA. MIN.
 - C. HOT ROLLED STEEL, 1/8" MIN. THICKNESS
 - D. SO. PINE, GRADE NO. 2 OR BETTER

2. FIRST ANCHOR IS 2" FROM EDGE OF VERTICAL. EACH ADDITIONAL FASTENER IS AT REQUIRED MIN. SPACING.

ANCHOR LENGTHS ARE SHOWN TO MEET MINIMUM EMBEDMENT.

DOOR PAIR DEPICTED, SINGLE DOORS QUALIFIED BY SAME.

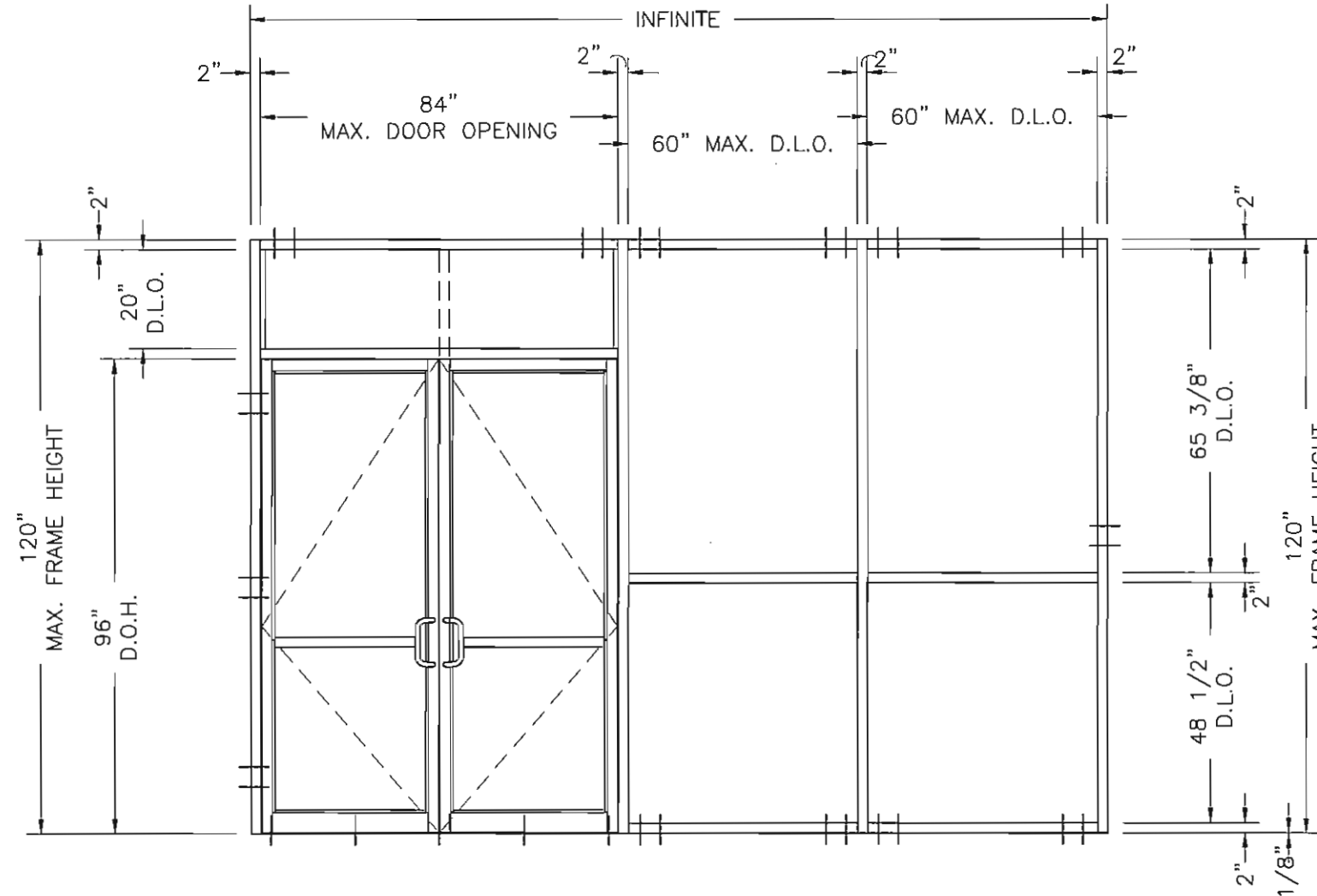
FOR DOOR FRAMES WITHOUT SIDELITES, ANCHORING SHALL BE DUPLICATED ON BOTH JAMBS AS SHOWN (PAIRS AND/ OR SINGLES).

DOOR FRAME JAMB ANCHORS 1/4" X 3" HEX OR FLAT HEAD TAPCONS	
LOCATION	SPACING
FROM BOTTOM OF FRAME (2) TOTAL	8-1/2", 12-1/2"
FROM CENTERLINE (2) TOTAL	2" ABOVE CENTERLINE 2" BELOW CENTERLINE
FROM BOTTOM OF DOOR HEADER (2) TOTAL	8-1/2", 12-1/2"

NOTE:
DOOR FRAMES WITH AND WITHOUT TRANSOM SHALL BE ANCHORED AS SHOWN ON CHART ABOVE.

HEAD AND SILL

1/4" X 2-1/2" TAPCON WITH 1-3/4" MIN. EMBEDMENT, MIN. 4" SPACING, 2-1/2" MIN. EDGE DISTANCE. LOCATE FIRST ANCHOR 2" FROM EDGE OF MULLION AND ADDITIONAL FASTENERS @ 4" MIN. SPACING.



CONCRETE SUBSTRATE ANCHOR LOCATIONS

JAMB

1/4" X 2-1/2" TAPCON WITH 1-3/4" MIN. EMBEDMENT, 2-1/2" MIN. EDGE DISTANCE. LOCATE (1) ANCHOR @ 2" ABOVE AND BELOW CENTERLINE

NOTE:

MULLION JAMB ANCHORS MAY BE OMITTED FOR HEIGHTS LESS THAN 9'-0"

THRESHOLD ANCHORS 1/4" X 2-1/2" FHP TAPCON OR EQUAL - 1-3/4" MINIMUM EMBEDMENT, 2-1/2" MIN. EDGE DISTANCE	
SINGLE DOORS UP TO 48" (3 ANCHORS TOTAL)	(1) EACH 4" FROM EACH JAMB
	(1) EACH AT CENTER LINE OF DOOR OPENING
PAIRS DOORS UP TO 96" (5 ANCHORS TOTAL)	(1) EACH AT 4" FROM EACH JAMB
	(1) EACH AT CENTER LINE OF DOOR OPENING
	(1) EACH BETWEEN CENTER LINE AND JAMB ANCHORS



B BROADWAY ENGINEERING, P.A.
CIVIL, MECHANICAL, STRUCTURAL AND BUILDING DESIGN
See Us At www.Broadway-Eng.Com
1335 W. Casa Street
Tampa, Florida 33606 813-251-9244
Fax 813-251-9330 Bus. Email: Info@Broadway-Eng.Com
Cadd. Email: DGarr@Broadway-Eng.Com
BE-4870 Certificate of Authorization No. 4599

REV	BY	DATE	DESCRIPTION

Coral
Architectural Products
3010 RICE MINE ROAD, TUSCALOOSA, AL 35408
PHONE 800-772-7737 FAX 800-235-1320

FLORIDA PRODUCT APPROVAL DRAWINGS FOR FL300T
CONCRETE FASTENER LOCATIONS

PROJECT NO. FL300T	DATE 3/28/18
DRAWN DEG	APPROVED EAB
CHECKED WS	SHEET 15 OF 17

PERIMETER FASTENERS:

1. TYPICAL INSTALLATION INTO SUBSTRATES
 - A. 3000 PSI CONCRETE
 - B. STEEL, 18 GA. MIN.
 - C. HOT ROLLED STEEL, 1/8" MIN. THICKNESS
 - D. SO. PINE, GRADE NO. 2 OR BETTER

2. FIRST ANCHOR IS 2" FROM EDGE OF VERTICAL. EACH ADDITIONAL FASTENER IS AT REQUIRED MIN. SPACING.

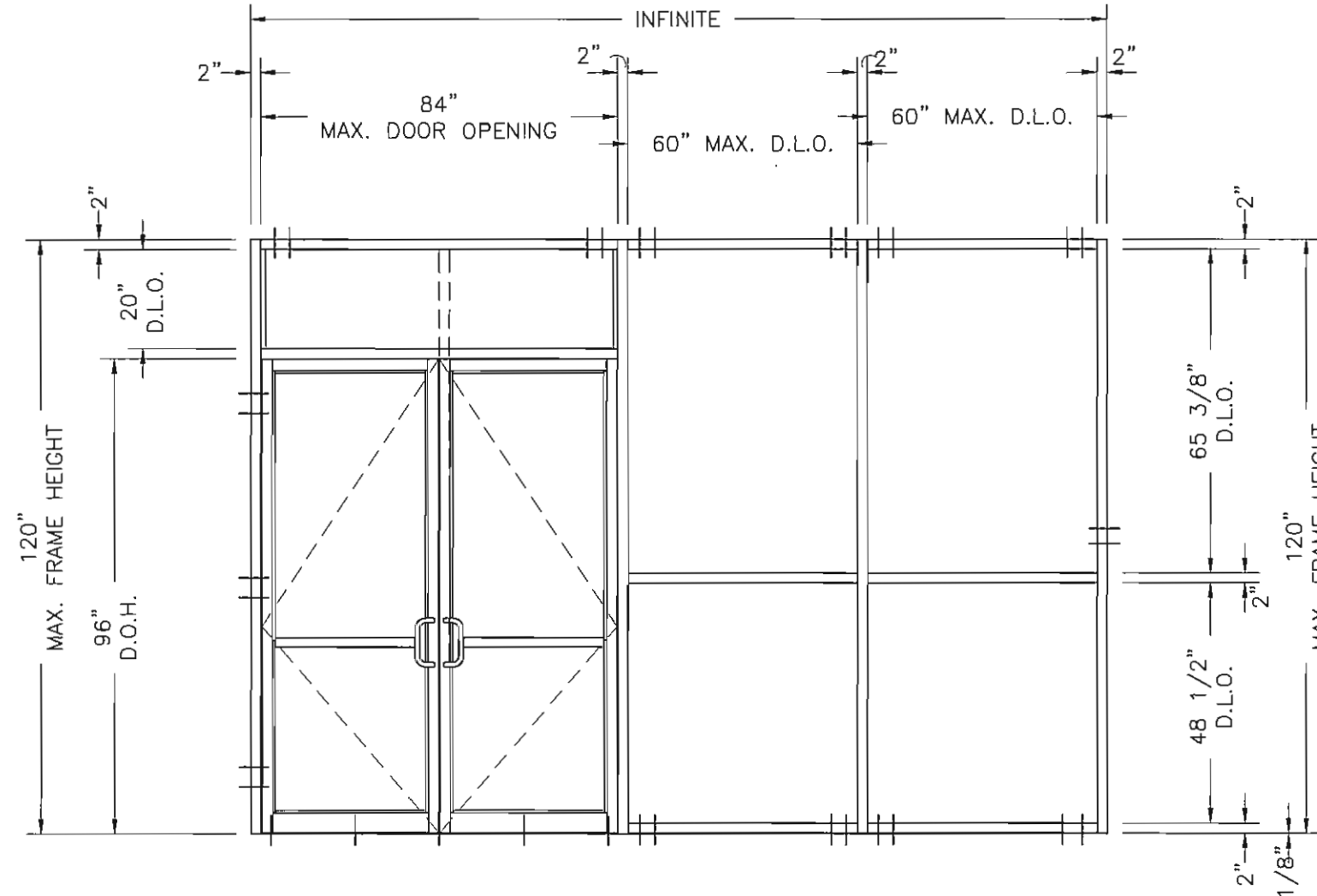
ANCHOR LENGTHS ARE SHOWN TO MEET MINIMUM EMBEDMENT.

DOOR PAIR DEPICTED, SINGLE DOORS QUALIFIED BY SAME.

FOR DOOR FRAMES WITHOUT SIDELITES, ANCHORING SHALL BE DUPLICATED ON BOTH JAMBS AS SHOWN (PAIRS AND/ OR SINGLES).

HEAD AND SILL

1/4" X 2-1/2" TEK 3 SCREW.
LOCATE FIRST ANCHOR 2" FROM EDGE OF MULLION AND ADDITIONAL ANCHORS @ 2" MIN. SPACING .



DOOR FRAME JAMB ANCHORS 1/4-14 X 2-1/2" TEK 3 HEX OR FLAT HEAD SCREWS	
LOCATION	SPACING
FROM BOTTOM OF FRAME (2) TOTAL	8-1/2", 12-1/2"
FROM CENTERLINE (2) TOTAL	2" ABOVE CENTERLINE 2" BELOW CENTERLINE
FROM BOTTOM OF DOOR HEADER (2) TOTAL	8-1/2", 12-1/2"

NOTE:
DOOR FRAMES WITH AND WITHOUT TRANSOM SHALL BE ANCHORED AS SHOWN ON CHART ABOVE.

THRESHOLD ANCHORS 1/4" X 2-1/2" FHP TAPCON OR EQUAL - 1-3/4" MINIMUM EMBEDMENT, 2-1/2" MIN. EDGE DISTANCE	
SINGLE DOORS UP TO 48" (3 ANCHORS TOTAL)	(1) EACH 4" FROM EACH JAMB
	(1) EACH AT CENTER LINE OF DOOR OPENING
PAIRS DOORS UP TO 96" (5 ANCHORS TOTAL)	(1) EACH AT 4" FROM EACH JAMB
	(1) EACH AT CENTER LINE OF DOOR OPENING
	(1) EACH BETWEEN CENTER LINE AND JAMB ANCHORS

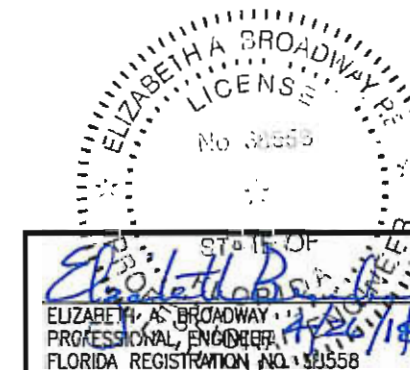
**LIGHT GAUGE MIN. 18 GA. STEEL
SUBSTRATE ANCHOR LOCATIONS**

JAMB

1/4" X 2-1/2" TEK 3 SCREW.
LOCATE (1) ANCHOR @ 1" ABOVE AND BELOW CENTERLINE

NOTE:

MULLION JAMB ANCHORS MAY BE OMITTED FOR HEIGHTS LESS THAN 9'-0"



B BROADWAY ENGINEERING, P.A.
CIVIL, MECHANICAL, STRUCTURAL AND BUILDING DESIGN
See Us At www.Broadway-Eng.Com
1335 W. Cass Street
Tampa, Florida 33606 813-251-9244
Fax 813-251-9330 Bus. Email: Info@Broadway-Eng.Com
Cadd. Email: DCorr@Broadway-Eng.Com
BE-4870 Certificate of Authorization No. 4599

FLORIDA PRODUCT
APPROVAL DRAWINGS FOR FL300T
LIGHT GAUGE STEEL FASTENER LOCATIONS

PROJECT NO. FL300T	DATE 3/28/18
DRAWN DEG	APPROVED EAB
CHECKED WS	
SHEET 16 OF 17	

Corral
Architectural Products
3010 RICE MINNE RD., TUSCALOOSA, AL 35406
PHONE 800-772-7737 FAX 800-265-1310

REV	BY	DATE	DESCRIPTION

PERIMETER FASTENERS:

1. TYPICAL INSTALLATION INTO SUBSTRATES
 - A. 3000 PSI CONCRETE
 - B. STEEL, 18 GA. MIN.
 - C. HOT ROLLED STEEL, 1/8" MIN. THICKNESS
 - D. SO. PINE, GRADE NO. 2 OR BETTER

2. FIRST ANCHOR IS 2" FROM EDGE OF VERTICAL. EACH ADDITIONAL FASTENER IS AT REQUIRED MIN. SPACING.

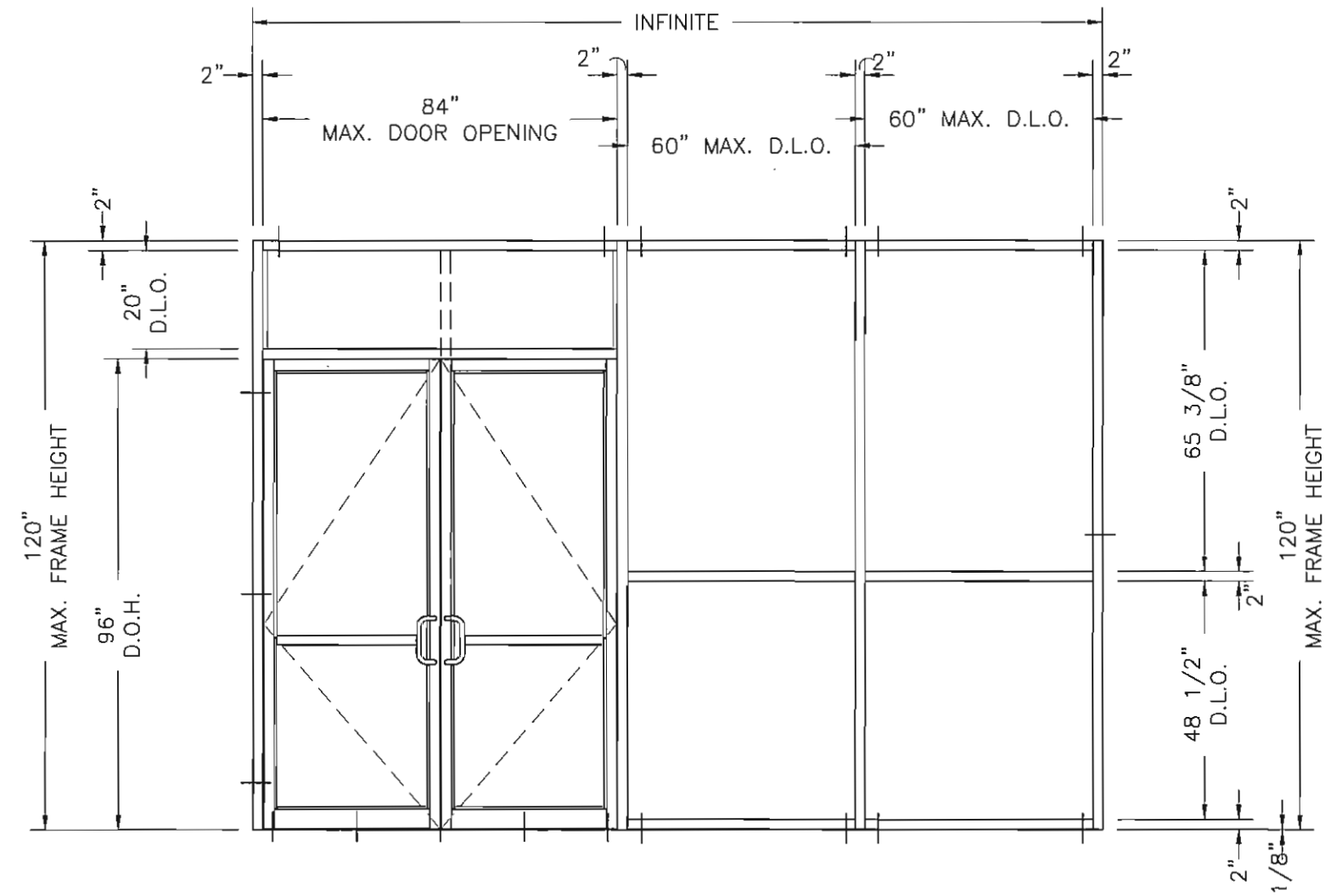
ANCHOR LENGTHS ARE SHOWN TO MEET MINIMUM EMBEDMENT.

DOOR PAIR DEPICTED, SINGLE DOORS QUALIFIED BY SAME.

FOR DOOR FRAMES WITHOUT SIDELITES, ANCHORING SHALL BE DUPLICATED ON BOTH JAMBS AS SHOWN (PAIRS AND/ OR SINGLES).

HEAD AND SILL

1/4" X 2" PAN HEAD OR TEK SCREW
OR
1/4" X 2" TYPE F BOLT OR STANDARD SAE BOLT AND TAP
OR
1/4" X 2" BOLT, NUT, AND WASHER
LOCATE ANCHORS 2" FROM EDGE OF MULLION.



DOOR FRAME JAMB ANCHORS 1/4-14 X 2-1/2" TEK 3 HEX OR FLAT HEAD SCREWS OR 1/4" X 2-1/2" BOLT	
LOCATION	SPACING
FROM BOTTOM OF FRAME (1) TOTAL	8-1/2"
FROM CENTERLINE (1) TOTAL	AT CENTERLINE
FROM BOTTOM OF DOOR HEADER (1) TOTAL	8-1/2"

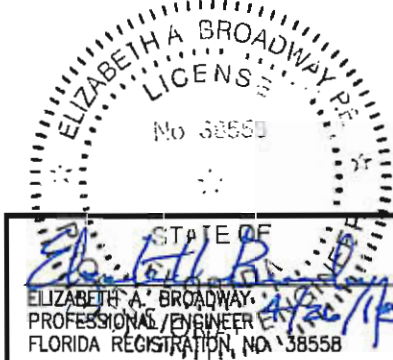
NOTE:
DOOR FRAMES WITH AND WITHOUT TRANSOM SHALL BE ANCHORED AS SHOWN ON CHART ABOVE.

THRESHOLD ANCHORS 1/4" X 2-1/2" FHP TAPCON OR EQUAL - 1-3/4" MINIMUM EMBEDMENT, 2-1/2" MIN. EDGE DISTANCE	
SINGLE DOORS UP TO 48" (3 ANCHORS TOTAL)	(1) EACH 4" FROM EACH JAMB
	(1) EACH AT CENTER LINE OF DOOR OPENING
PAIRS DOORS UP TO 96" (5 ANCHORS TOTAL)	(1) EACH AT 4" FROM EACH JAMB
	(1) EACH AT CENTER LINE OF DOOR OPENING
	(1) EACH BETWEEN CENTER LINE AND JAMB ANCHORS

**HOT ROLLED STEEL
SUBSTRATE ANCHOR LOCATIONS**

JAMB
1/4" X 2-1/2" TEK 3 SCREW OR BOLT
LOCATE ANCHOR @ CENTERLINE

NOTE:
MULLION JAMB ANCHORS MAY BE OMITTED FOR HEIGHTS LESS THAN 9'-0"



B BROADWAY ENGINEERING, P.A.
CIVIL, MECHANICAL, STRUCTURAL AND BUILDING DESIGN
See Us At www.Broadway-Eng.Com
1335 W. Cass Street
Tampa, Florida 33606 813-251-9244
Fax 813-251-9330 Bus. Email: Info@Broadway-Eng.Com
Cadd. Email: OGarr@Broadway-Eng.Com
BE-4870 Certificate of Authorization No. 4599

REV	BY	DATE	DESCRIPTION

Coral
Architectural Products
3010 RICE MIAMI ROAD, TUSCALOOSA, AL 35406
PHONE 800-772-7737 FAX 800-255-7330

FLORIDA PRODUCT
APPROVAL DRAWINGS FOR FL300T
HOT ROLLED STEEL FASTENER LOCATIONS

PROJECT NO.	FL300T
DRAWN	DEG
DATE	3/28/18
CHECKED	WS
APPROVED	EAB
SHEET	17 OF 17