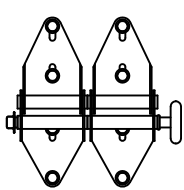
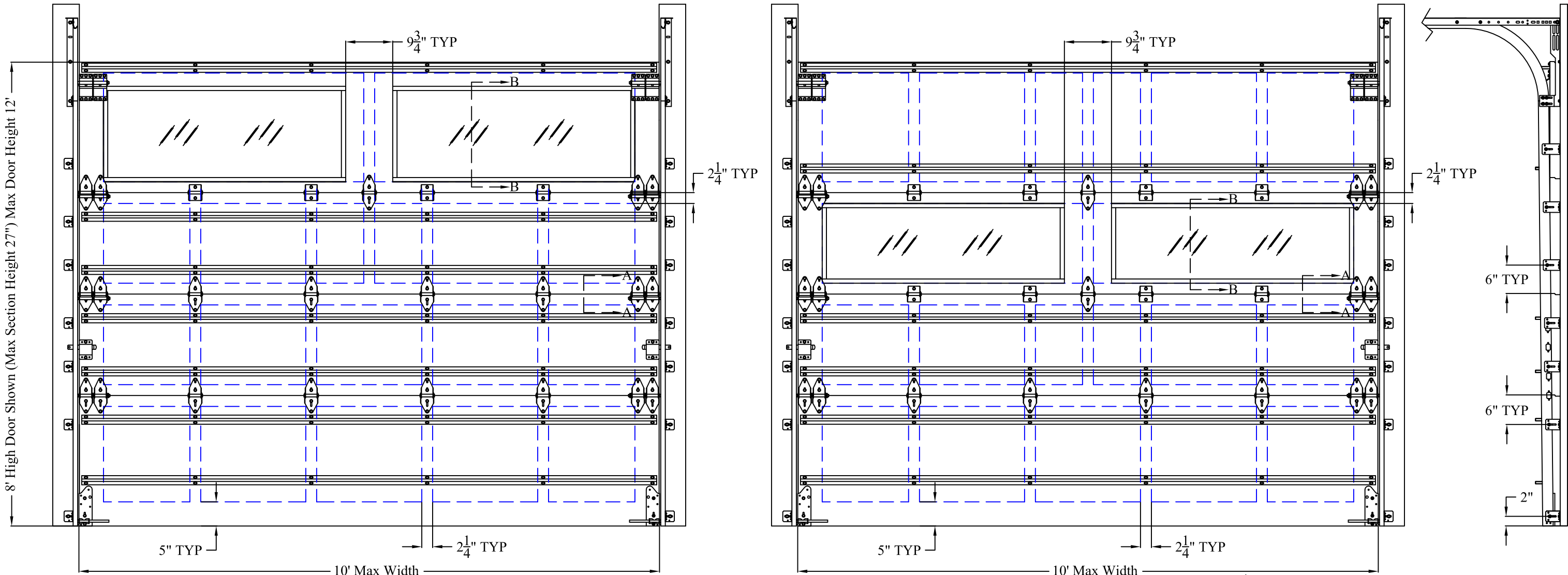
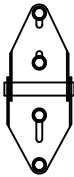


REVISIONS				
ZONE	REV	DESCRIPTION	DATE	APPROVED



End Hinge
11 gauge galvanized steel double end hinges attached with four 1/4" x 2 1/4" carriage bolts or four 1/4" x 1 1/4" lag screws

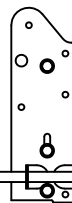
Roller
2" steel or nylon roller with a hardened 7" stem and push nut installed (hurricane roller)



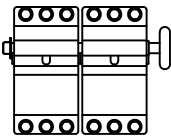
Center Hinge
11 gauge galvanized steel hinge at each center stile attached with four 1/4" x 2 1/4" carriage bolts or four 1/4" x 1 1/4" lag screws



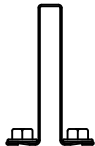
Short Center Hinge
11 gauge galvanized steel hinge at each center stile attached with two 1/4" x 2 1/4" carriage bolts or two 1/4" x 1 1/4" lag screws (for use on glass section)



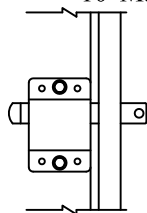
Bottom Bracket
11 gauge galvanized steel bottom bracket attached to bottom section with three 1/4" x 2 1/4" carriage bolts or three 1/4" x 1 1/4" lag screws (no push nut required on bottom roller)



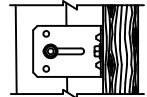
Top Fixture
12 gauge galvanized steel double top fixtures attached with six 1/4" x 1 1/4" lag screws each (push nut is required on top roller)



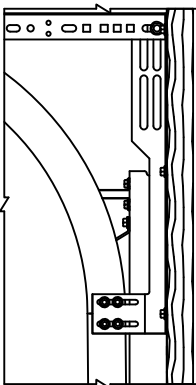
Struts
3" 20 gauge 50 ksi hat strut attached with two 1/4" x 1 1/4" lag screws per stile and located as shown on the sections



Locking Mechanism
Doors must have either an electronic operator or locking device installed (inside slide lock shown, other lock types permitted)



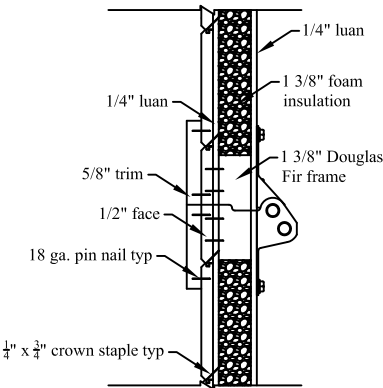
Track Brackets
12 gauge galvanized steel track bracket attached to wood jamb with one 5/16" x 1 5/8" wood lag screw and to vertical track with one 1/4" x 5/8" track bolt and nut



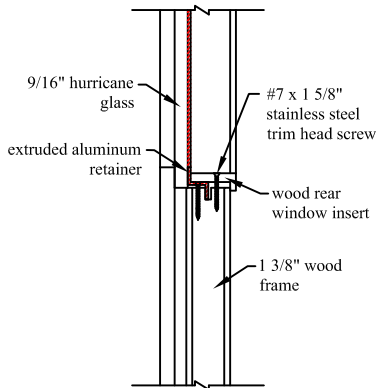
Flag Bracket
12 gauge galvanized steel flag bracket attached to wood jamb with three 5/16" x 1 5/8" wood lag screws and to the horizontal and vertical tracks with two 1/4" x 5/8" track bolts and nuts each

Horizontal Track and Angle
Horizontal track and angle to suit

Vertical Track
2" galvanized steel track with a minimum thickness of .083"



Section A - A




Section B - B

Windows (optional)
9/16" hurricane glass windows with a maximum opening of 47" x 16 5/8" on the front and 48 3/4" x 18 3/8" on the back, retained on all four sides by an extruded aluminum retainer and wood rear window insert attached with #7 x 1 5/8" stainless steel trim head screws (overlap on all four sides is 7/8"), and sealed on all four edges with Dow Corning 995 sealant

Note: The design of the supporting structural elements shall be the responsibility of the professional of record for the structure and in accordance with current building codes for the loads listed on this document

Models: Design 101 thru 108
Tested in accordance with ANSI/DASMA 108 and ANSI/DASMA 115
Design Pressure: +48/-55 PSF
Test Pressure: +72/-82.5 PSF
DRAWN BY:
John M. Stroede 6/5/18
APPROVED BY:
John M. Stroede 6/5/18



15411 MAIN ST HWY 79
OLD FORT, NC 28762

PHONE 828-668-1600
FAX 828-668-1805

TITLE

10x8 Carriage House Door +48/-55 PSF

DRAWING NUMBER		REVISION	
Carriage-10-8-48-55		A	
SIZE	B	SCALE	N/A
		SHEET	1 of 1