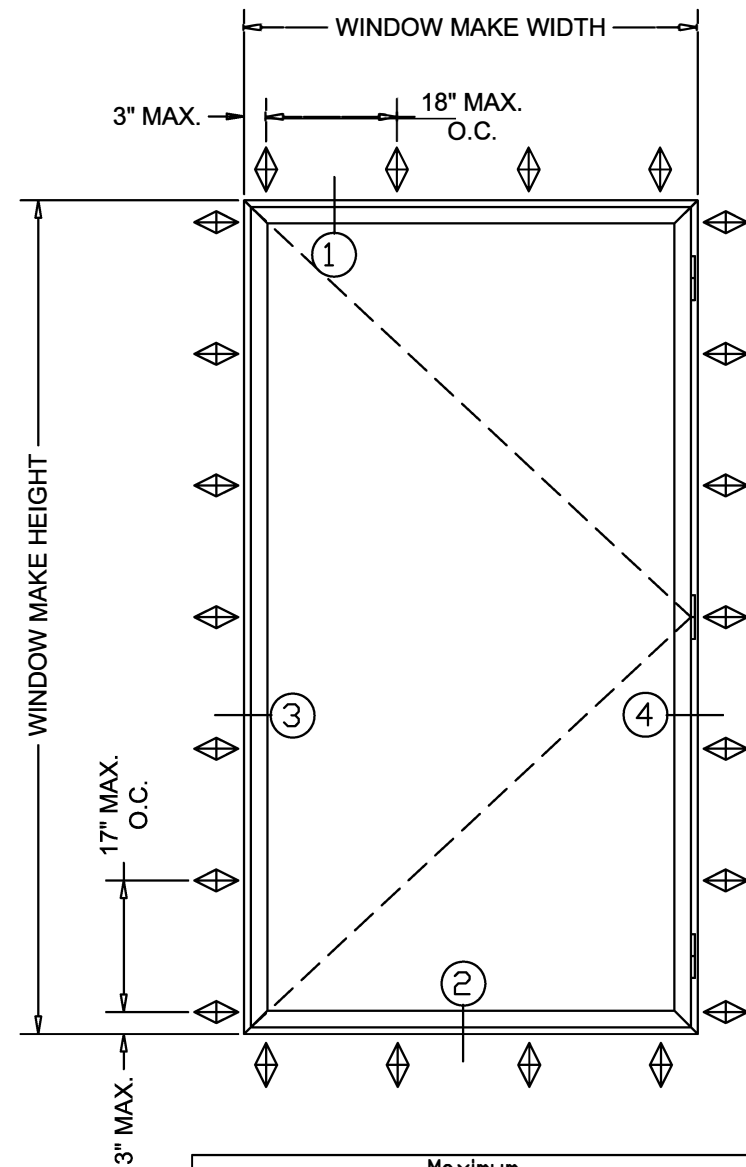


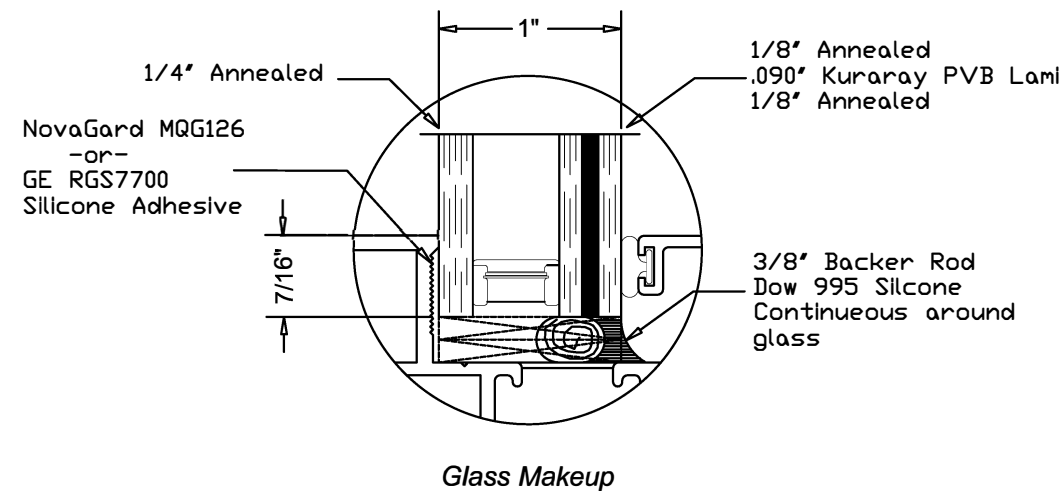
NOTE: TYPICAL M700 CASEMENT OUTSWING WINDOW - INSTALLATION




| Maximum | | | | |
|------------------|-----|---------|---------|----------|
| FW | FH | VENT-W | VENT-H | Pressure |
| 42' | 72' | 40 1/4' | 70 1/4' | ± 70 PSF |
| DAYLIGHT OPENING | | 36' | 66' | |

Notes:

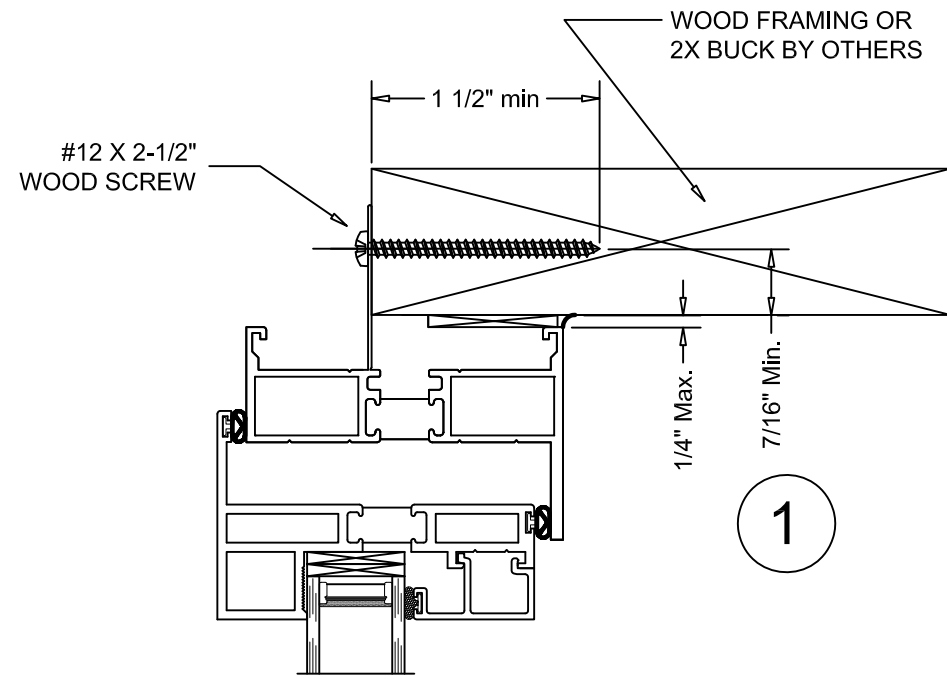
1. Installations depicted satisfy the requirements of the 8th Edition (2023) of the Florida Building Code for Wind Pressures and Overall Sizes shown.
2. As Tested Anchor spacings are shown on the Elevations.
3. Wood Framing are assumed to Southern Pine (G=0.55) or denser.
4. Metal stud frames are assumed to be a minimum 16 gauge 33 KSI Steel.
5. Concrete masonry (CMU) shall conform to ASTM C90.
6. Concrete shall be minimum $f_c = 3,000$ psi.
7. Wood Screws shall meet requirements of ANSI/ASME B18.6.1.
8. TEKS screws shall be ASTM A510 Grade 1018 or equivalent.
9. Hilti Kwik-Con + anchors as specified in NOA 21-0628.20
10. Maximum Frame Shim Space is $\frac{1}{4}$ " as shown. Shims shall be non-compressible load bearing type.
11. Exterior and Interior shall be sealed according to Shop Drawings.
12. Products shown are Impact Resistant. Wind Zone 3 - Missile Level D
13. Not for use in High Velocity Hurricane Zone (HVHZ).
14. Sealing and flashing strategies and overall water infiltration performance of the installed product are by others and not addressed by this document.



7/27/2023
 LUCAS TURNER
 FL PE 58201
 TURNER ENGINEERING &
 CONSULTING, INC.
 2428 OLD NATCHEZ TRACE TRL.
 CAMDEN, TN, 38320
 PH 941-380-1574

| | | | | | |
|---|----------------------------------|---|---|---|--|
|  | Drawn By: BUD Date: 7-27-2023 | Scale: NONE 504 Highway 63 South Freeburg, MO 65035 drafting@quakerwindows.com | PHONE (573)-744-5211 FAX (573)-744-5586 COMMERCIAL FAX (573)-744-5822 www.quakerwindows.com | Description: GENERAL NOTES QUAKER WINDOW PRODUCTS WILL NOT BE RESPONSIBLE FOR FIELD MEASUREMENT QUANTITIES, & INSTALLATION DESIGN. CONTRACTOR MUST VERIFY ALL DIMENSIONS. | Project Name: M700 CASEMENT O.S. INSTALLATION INSTRUCTIONS |
|---|----------------------------------|---|---|---|--|

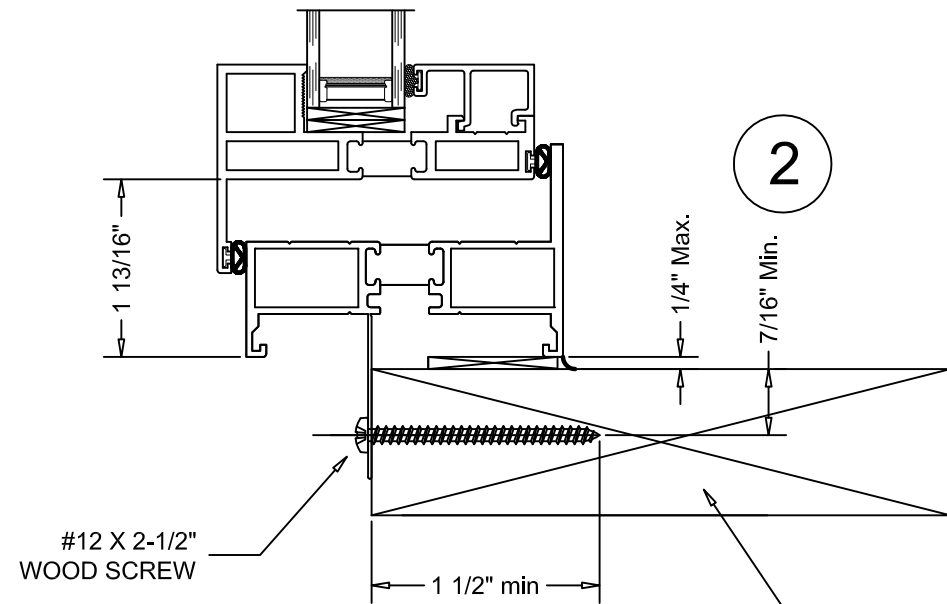
NOTE: TYPICAL M700 CASEMENT OUTSWING WINDOW - NAIL FIN INSTALLATION



EXTERIOR

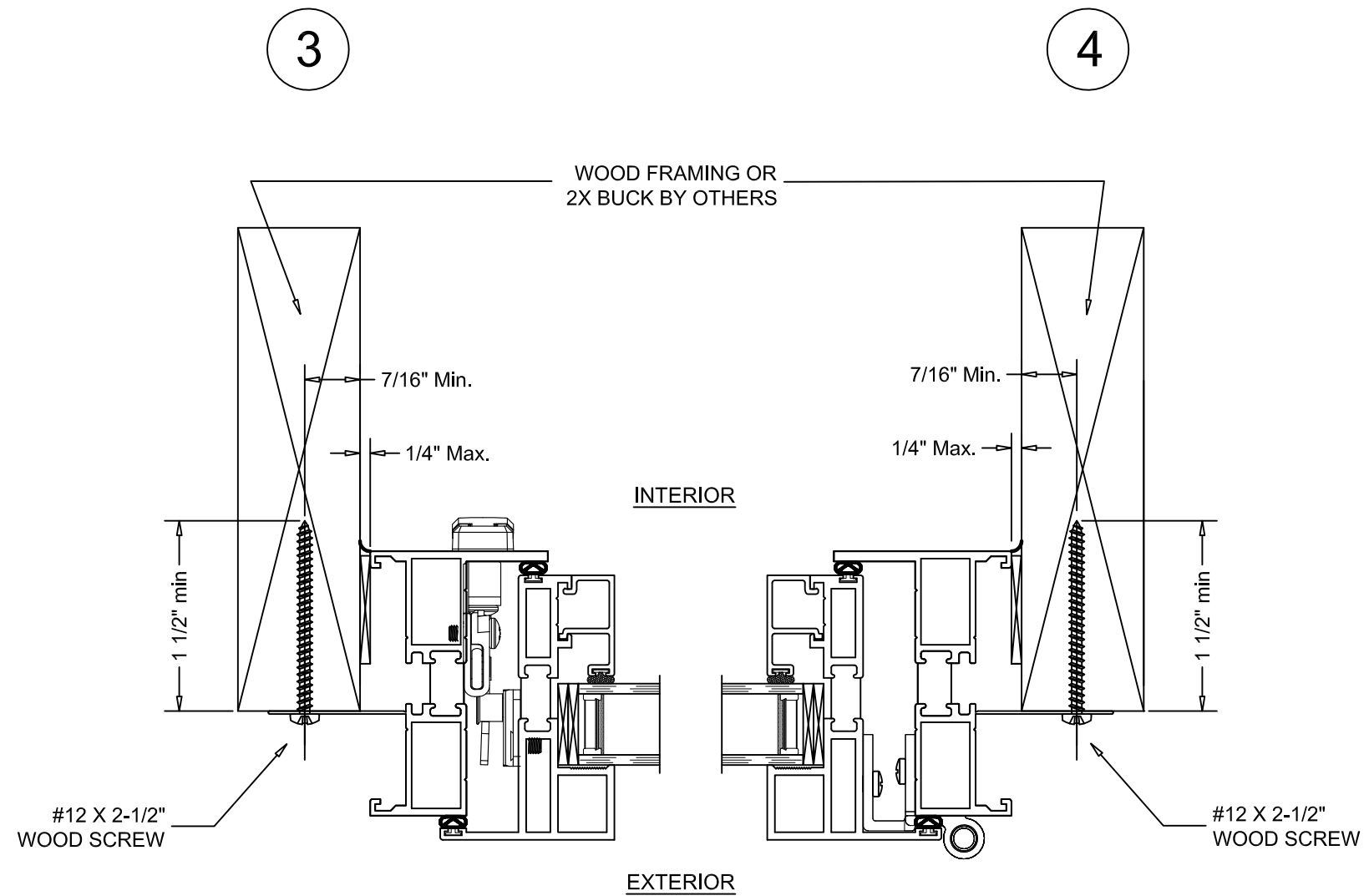
INTERIOR

1



VERTICAL SECTION DETAIL

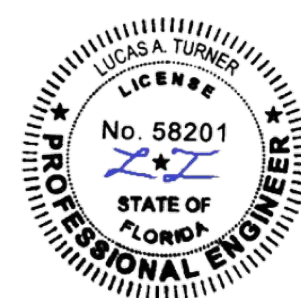
WOOD FRAMING INSTALLATION



HORIZONTAL SECTION DETAIL

WOOD FRAMING INSTALLATION

7/27/2023
 LUCAS TURNER
 FL PE 58201
 TURNER ENGINEERING &
 CONSULTING, INC.
 2428 OLD NATCHEZ TRACE TRL.
 CAMDEN, TN, 38320
 PH 941-380-1574



Project Name:

M700 CASEMENT O.S.

NAIL FIN

INSTALLATION INSTRUCTIONS

GENERAL NOTES

Description:

QUAKER WINDOW PRODUCTS
 WILL NOT BE RESPONSIBLE
 FOR FIELD MEASUREMENT
 QUANTITIES, & INSTALLATION
 DESIGN. CONTRACTOR MUST
 VERIFY ALL DIMENSIONS.

PHONE (573)-744-5211
 FAX (573)-744-5586

COMMERCIAL
 www.quakerwindows.com

FAX (573)-744-5822

Scale: NONE

Sheet #: 2 of 5

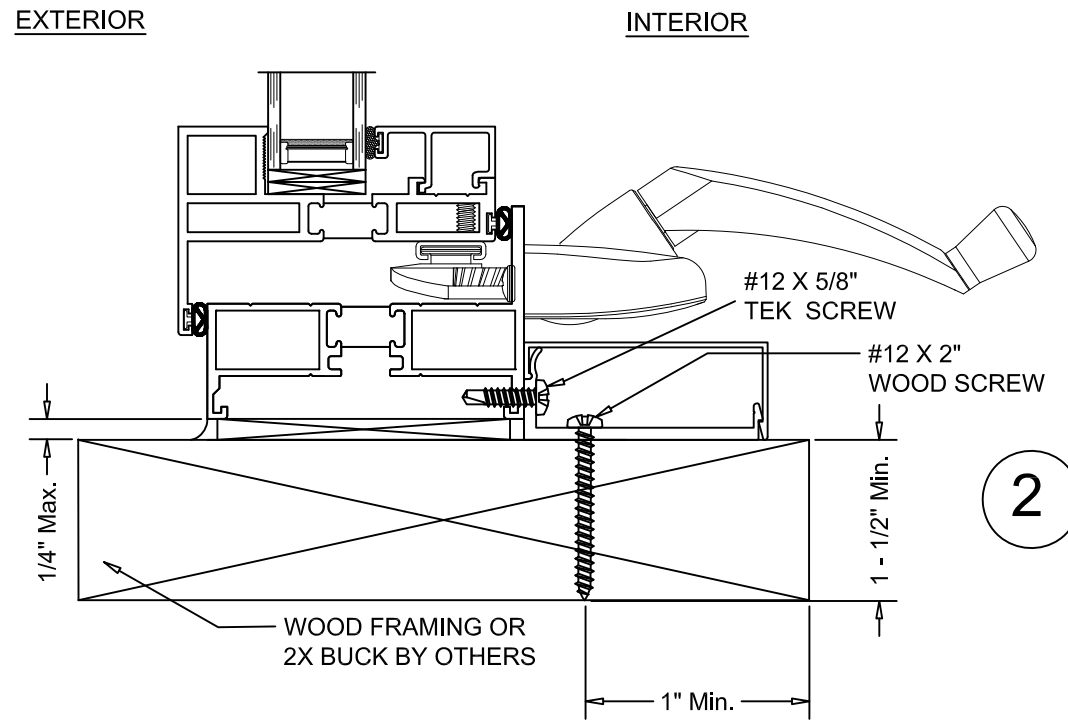
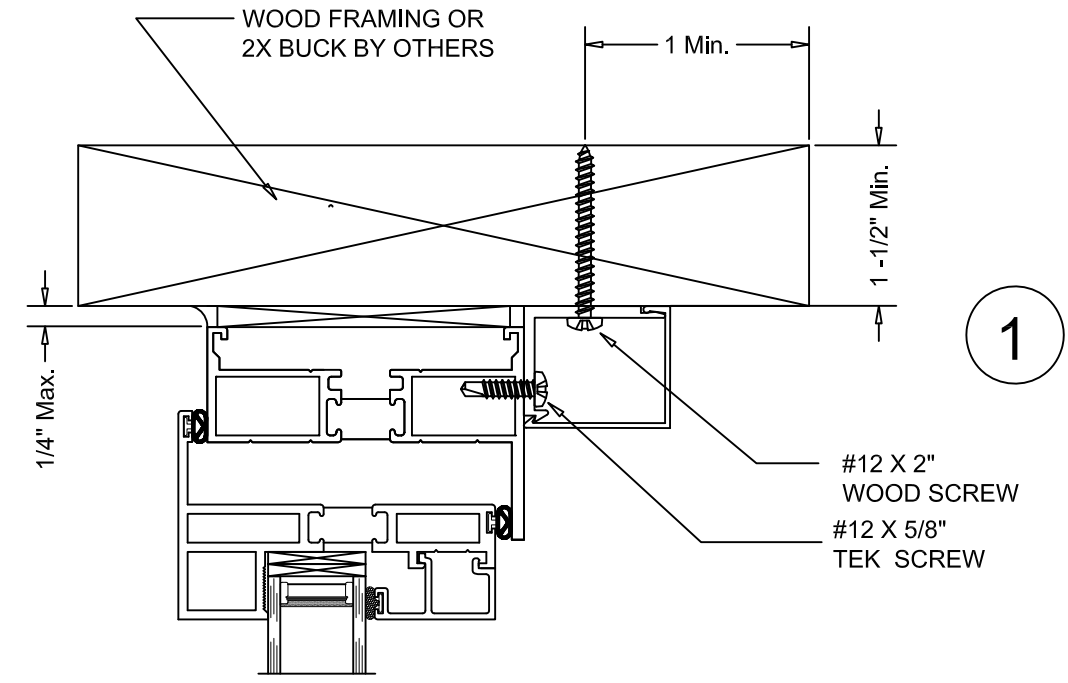


504 Highway 63 South
 Freeburg, MO 65035
 drafting@quakerwindows.com

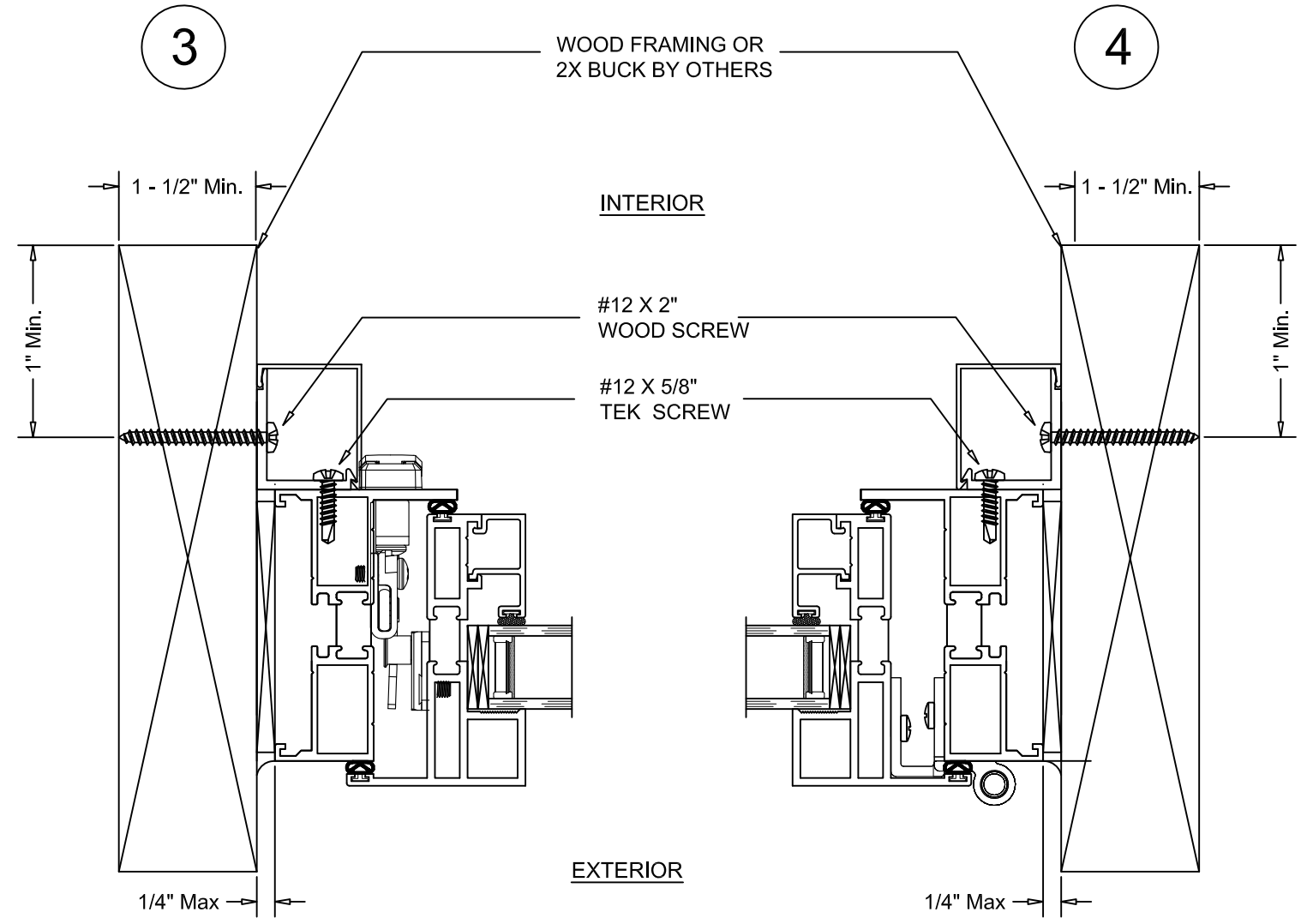
Drawn By: BUD

Date: 7-27-2023

NOTE: TYPICAL M700 CASEMENT OUTSWING WINDOW - TRIM & CLIP

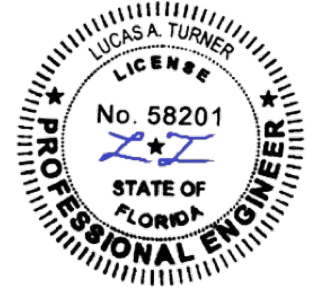


VERTICAL SECTION DETAIL
WOOD FRAMING INSTALLATION



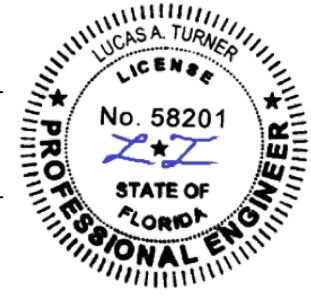
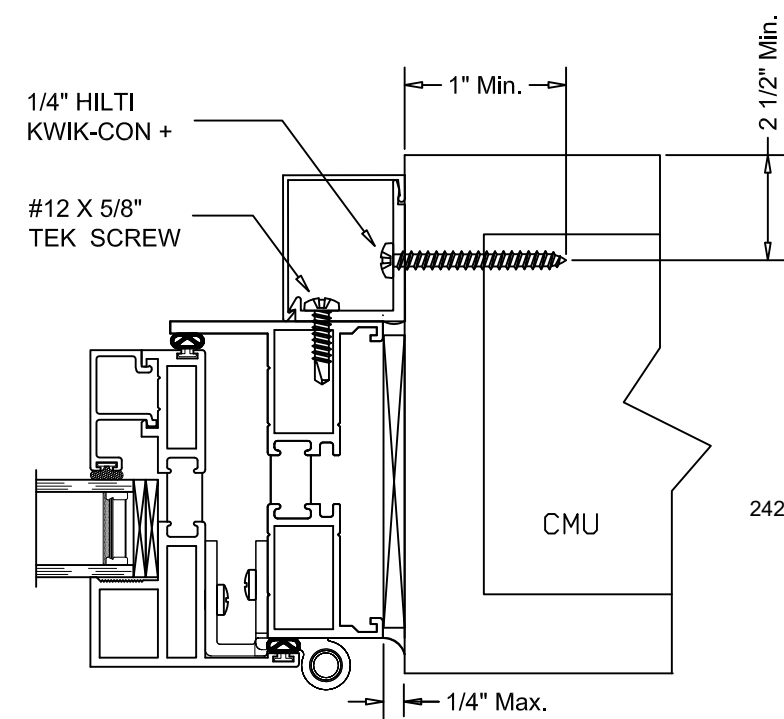
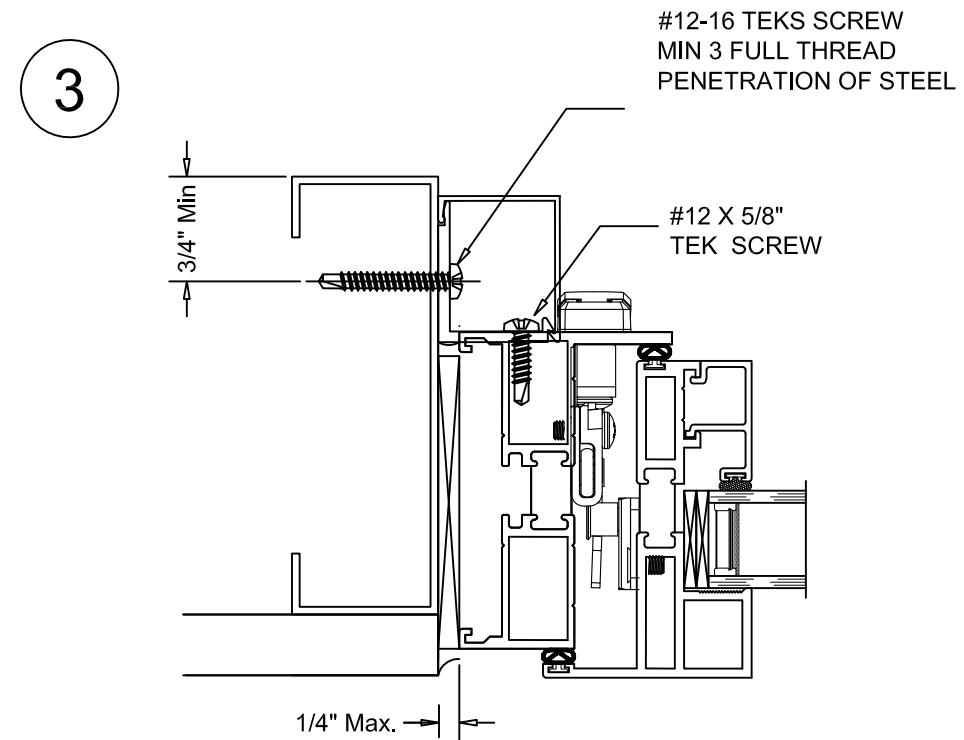
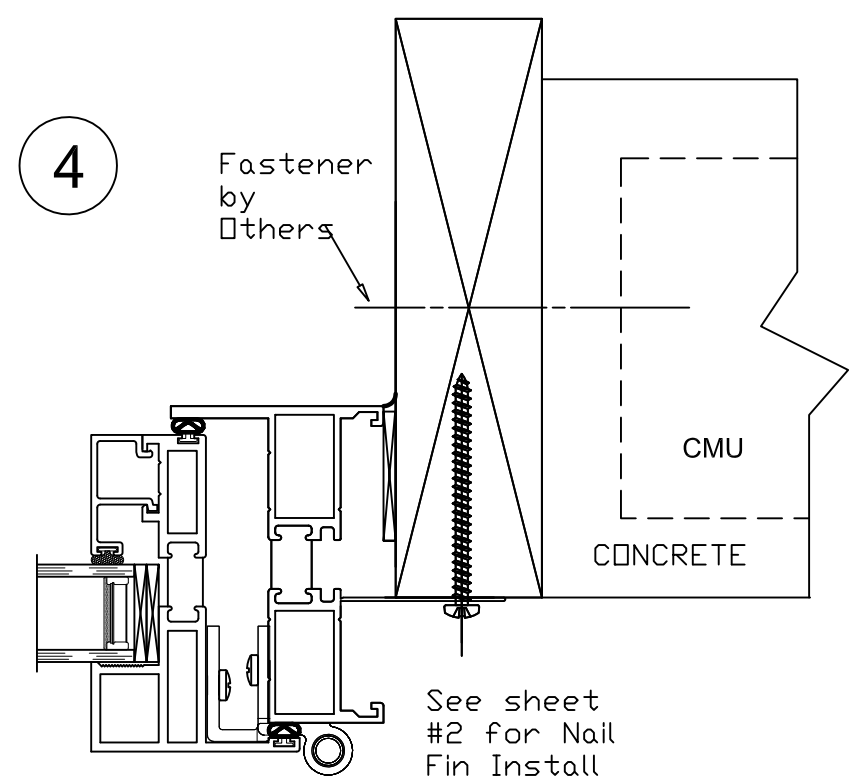
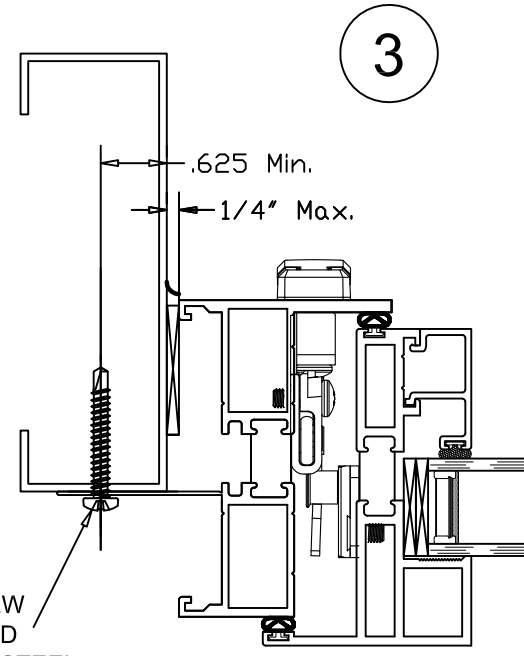
HORIZONTAL SECTION DETAIL
WOOD FRAMING INSTALLATION

7/27/2023
LUCAS TURNER
FL PE 58201
TURNER ENGINEERING &
CONSULTING, INC.
2428 OLD NATCHEZ TRACE TRL.
CAMDEN, TN, 38320
PH 941-380-1574



| | |
|---|--|
| Project Name: M700 CASEMENT O.S. TRIM & CLIP | |
| GENERAL NOTES QUAKER WINDOW PRODUCTS WILL NOT BE RESPONSIBLE FOR FIELD MEASUREMENT QUANTITIES, & INSTALLATION DESIGN. CONTRACTOR MUST VERIFY ALL DIMENSIONS. | |
| Description: PHONE (573)-744-5211 FAX (573)-744-5586 COMMERCIAL www.quakerwindows.com | Scale: NONE Sheet #: 3 of 5 |
| Drawn By: BUD Date: 7-27-2023 | 504 Highway 63 South Freeburg, MO 65035 drafting@quakerwindows.com |

NOTE: TYPICAL M700 CASEMENT OUTSWING WINDOW - ALTERNATE SUBSTRATES



7/27/2023
LUCAS TURNER
FL PE 58201
TURNER ENGINEERING & CONSULTING, INC.
2428 OLD NATCHEZ TRACE TRL.
CAMDEN, TN, 38320
PH 941-380-1574

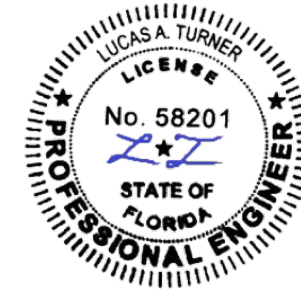
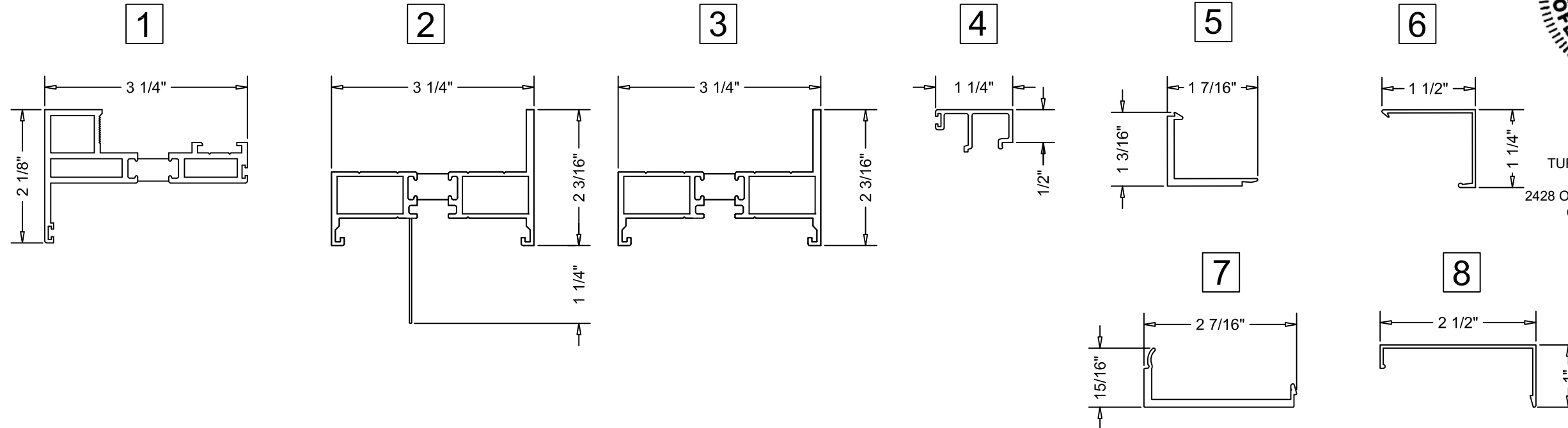
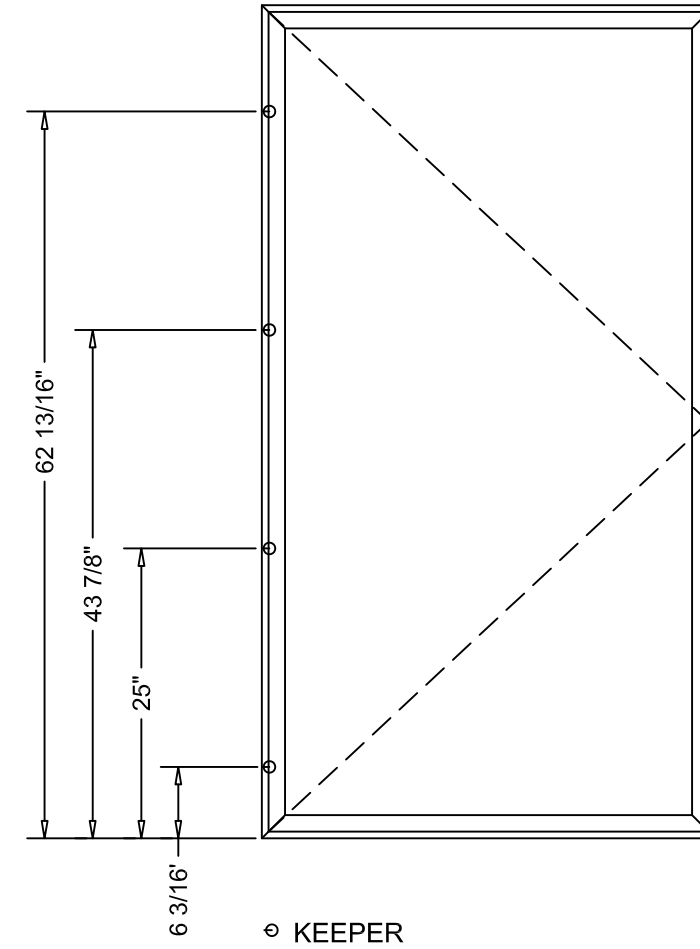
4

| | |
|--|--|
| GENERAL NOTES | |
| QUAKER WINDOW PRODUCTS WILL NOT BE RESPONSIBLE FOR FIELD MEASUREMENT QUANTITIES, & INSTALLATION DESIGN. CONTRACTOR MUST VERIFY ALL DIMENSIONS. | |
| PHONE (573)-744-5211 FAX (573)-744-5586 COMMERCIAL www.quakerwindows.com | Scale: NONE Sheet #: 4 of 5 |
| Drawn By: BUD Date: 7-27-2023 | 504 Highway 63 South Freeburg, MO 65035 drafting@quakerwindows.com |
| Project Name: M700 CASEMENT O.S. ALTERNATE SUBSTRATES INSTALLATION INSTRUCTIONS | |




NOTE: TYPICAL M700 CASEMENT OUTSWING WINDOW - BOM

| Bill of Materials | | | | |
|-------------------|--------------------------|-----------------|------------------|--------------------|
| NO. | Description | Part Number | Material | Manufacturer |
| 1 | Sash | M21291 | Aluminum 6063-T6 | Tower Extrusions |
| 2 | Frame w/ Nail Fin | M52732 | Aluminum 6063-T6 | Tower Extrusions |
| 3 | Frame | M52733 | Aluminum 6063-T6 | Tower Extrusions |
| 4 | Glazing Bead | M21195 | Aluminum 6063-T6 | Tower Extrusions |
| 5 | Heavy Base Clip - 1-1/4" | M17072 | Aluminum 6063-T6 | Tower Extrusions |
| 6 | Trim - 1-1/4" | M15267 | Aluminum 6063-T6 | Tower Extrusions |
| 7 | Heavy Base Clip - 1" | M2272 | Aluminum 6063-T6 | Iowa Aluminum |
| 8 | Trim - 1" | M19765 | Aluminum 6063-T6 | Tower Extrusions |
| 6 | Backbedding | MQG126 | Silicone | NovaGard |
| 7 | Structural Sealant | Dow Corning 995 | Silicone | Dow Corning |
| 8 | Maxim MP Lock Assy | 24.44.02.001 | | Truth |
| 9 | Tie-Bar 4pt | 15085.92 | | Truth |
| 10 | Keeper | 14485 | | Truth |
| 11 | Butt Hinge | 41A0104 | | Advantage Hardware |
| 12 | 14" Roto Operator | 55.00.02.112 | | Truth |



7/27/2023
 LUCAS TURNER
 FL PE 58201
 TURNER ENGINEERING &
 CONSULTING, INC.
 2428 OLD NATCHEZ TRACE TRL.
 CAMDEN, TN, 38320
 PH 941-380-1574

| | | |
|---|--|--|
|  Drawn By: BUD Date: 7-27-2023 | Description: GENERAL NOTES QUAKER WINDOW PRODUCTS WILL NOT BE RESPONSIBLE FOR FIELD MEASUREMENT, QUANTITIES, & INSTALLATION DESIGN. CONTRACTOR MUST VERIFY ALL DIMENSIONS. | Project Name: M700 CASEMENT O.S. BILL OF MATERIALS INSTALLATION INSTRUCTIONS |
| PHONE (573)-744-5211 FAX (573)-744-5586 COMMERCIAL FAX (573)-744-5822 www.quakerwindows.com | Scale: NONE 504 Highway 63 South Freeburg, MO 65035 drafting@quakerwindows.com | Sheet #: 5 of 5 |