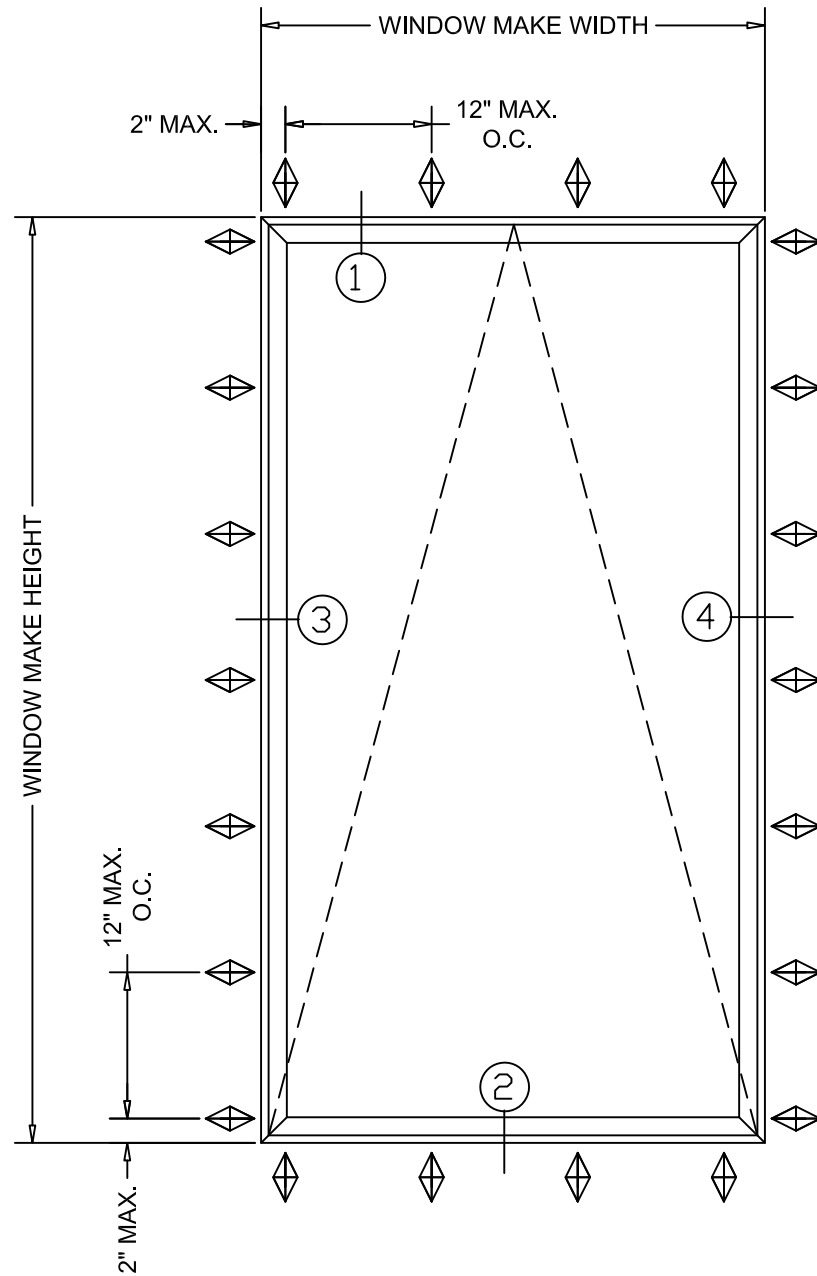


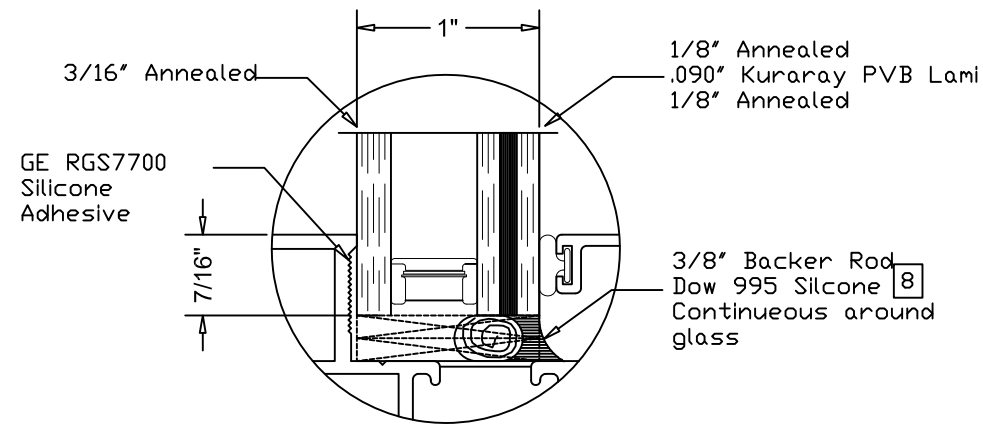
# NOTE: TYPICAL M700 PROJECT OUT / AWNING IMPACT WINDOW - INSTALLATION



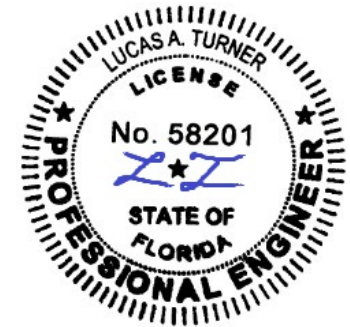
Maximum				
FW	FH	VENT-W	VENT-H	Pressure
48"	60"	46 1/4"	58 1/4"	± 70 PSF
DAYLIGHT OPENING		42"	54"	

## Notes:

1. Installations depicted satisfy the requirements of the 8th Edition (2023) of the Florida Building Code for Wind Pressures and Overall Sizes shown.
2. As Tested Anchor spacings are shown on the Elevations.
3. Wood Framing are assumed to Southern Pine (G=0.55) or denser.
4. Metal stud frames are assumed to be a minimum 16 gauge 33 KSI Steel.
5. Concrete masonry (CMU) shall conform to ASTM C90.
6. Concrete shall be minimum  $f_c = 3,000$  psi.
7. Wood Screws shall meet requirements of ANSI/ASME B18.6.1.
8. TEKS screws shall be ASTM A510 Grade 1018 or equivalent.
9. Hilti Kwik-Con + anchors as specified in NOA 21-0628.20
10. Maximum Frame Shim Space is  $\frac{1}{4}$ " as shown. Shims shall be non-compressible load bearing type.
11. Exterior and Interior shall be sealed according to Shop Drawings.
12. Products shown are Impact Resistant. Wind Zone 4 - Missile Level D
13. Not for use in High Velocity Hurricane Zone (HVHZ).
14. Sealing and flashing strategies and overall water infiltration performance of the installed product are by others and not addressed by this document.



7/27/2023  
 LUCAS TURNER  
 FL PE 58201  
 TURNER ENGINEERING &  
 CONSULTING, INC.  
 2428 OLD NATCHEZ TRACE TRL.  
 CAMDEN, TN, 38320  
 PH 941-380-1574



## Contents:

- Sheet 1 of 5 - Elevation
- Sheet 2 of 5 - Nail Fin install
- Sheet 3 of 5 - Trim & Clip
- Sheet 4 of 5 - Alternate Substrait Installation
- Sheet 5 of 5 - Extrusions - HDW - Locations

Project Name:

**M700 IMPACT AWNING  
 ELEVATION**

**INSTALLATION INSTRUCTIONS**

## GENERAL NOTES

Description:

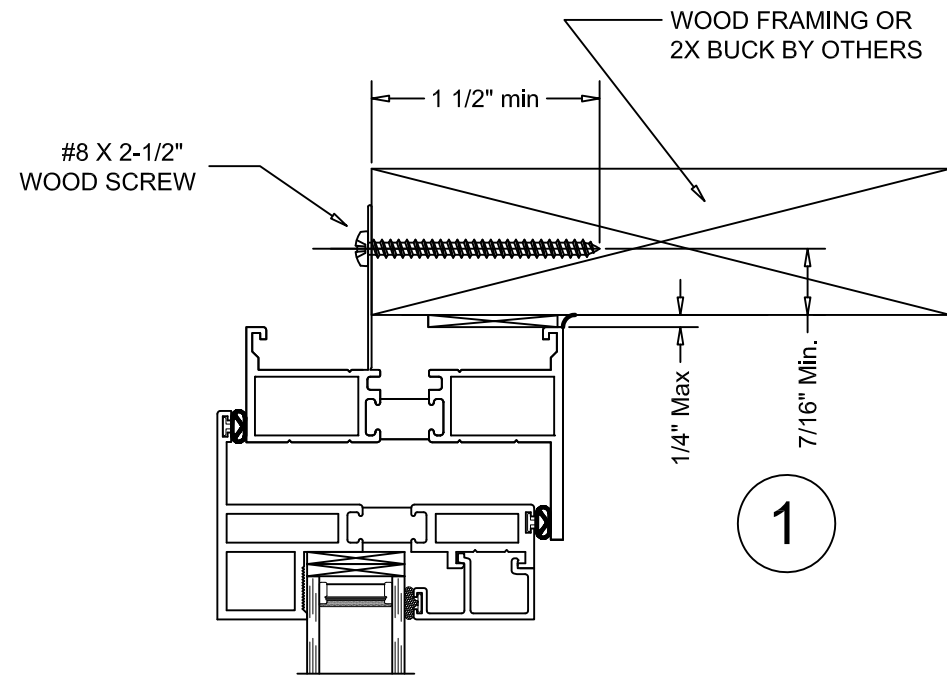
QUAKER WINDOW PRODUCTS  
 WILL NOT BE RESPONSIBLE  
 FOR FIELD MEASUREMENT  
 QUANTITIES, & INSTALLATION  
 DESIGN. CONTRACTOR MUST  
 VERIFY ALL DIMENSIONS.

PHONE (573)-744-5211  
 FAX (573)-744-5586  
 COMMERCIAL  
 FAX (573)-744-5822  
 www.quakerwindows.com



Scale: NONE  
 Sheet # 1 of 5  
 Drawn By: BUD  
 Date: 07-24-2023  
 504 Highway 63 South  
 Freeburg, MO 65035  
 drafting@quakerwindows.com

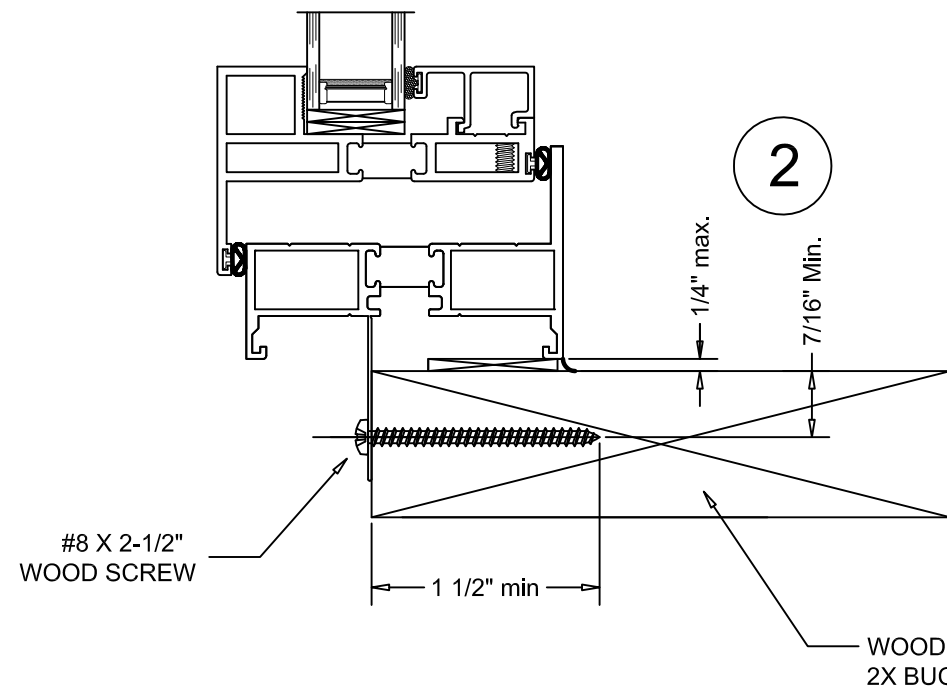
# NOTE: TYPICAL M700 PROJECT OUT / AWNING IMPACT WINDOW - NAIL FIN INSTALLATION



EXTERIOR

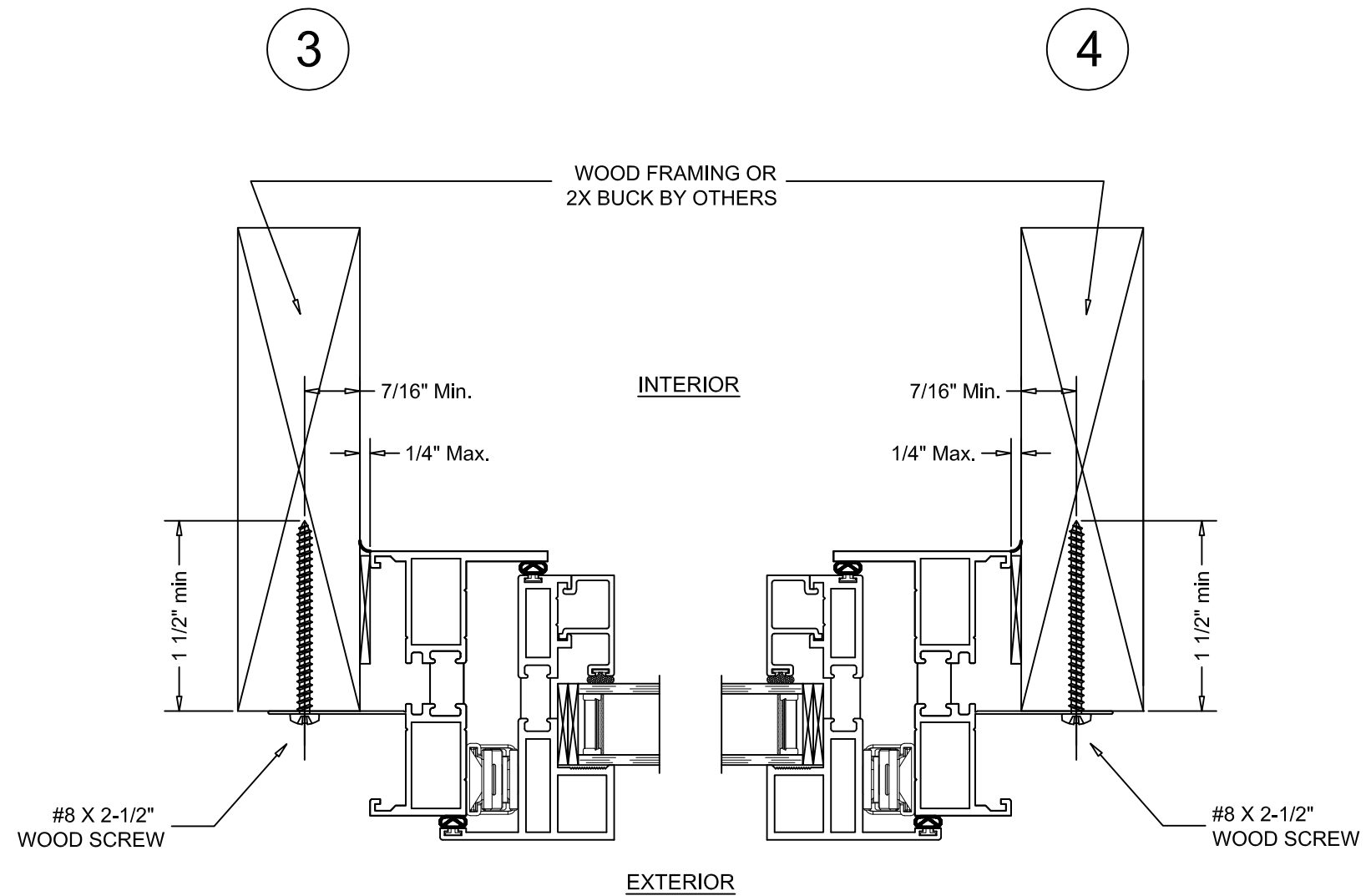
INTERIOR

1



VERTICAL SECTION DETAIL

WOOD FRAMING INSTALLATION



HORIZONTAL SECTION DETAIL

WOOD FRAMING INSTALLATION



7/27/2023  
 LUCAS TURNER  
 FL PE 58201  
 TURNER ENGINEERING &  
 CONSULTING, INC.  
 2428 OLD NATCHEZ TRACE TRL.  
 CAMDEN, TN, 38320  
 PH 941-380-1574

Project Name: **M700 IMPACT AWNING NAIL FIN**  
**INSTALLATION INSTRUCTIONS**

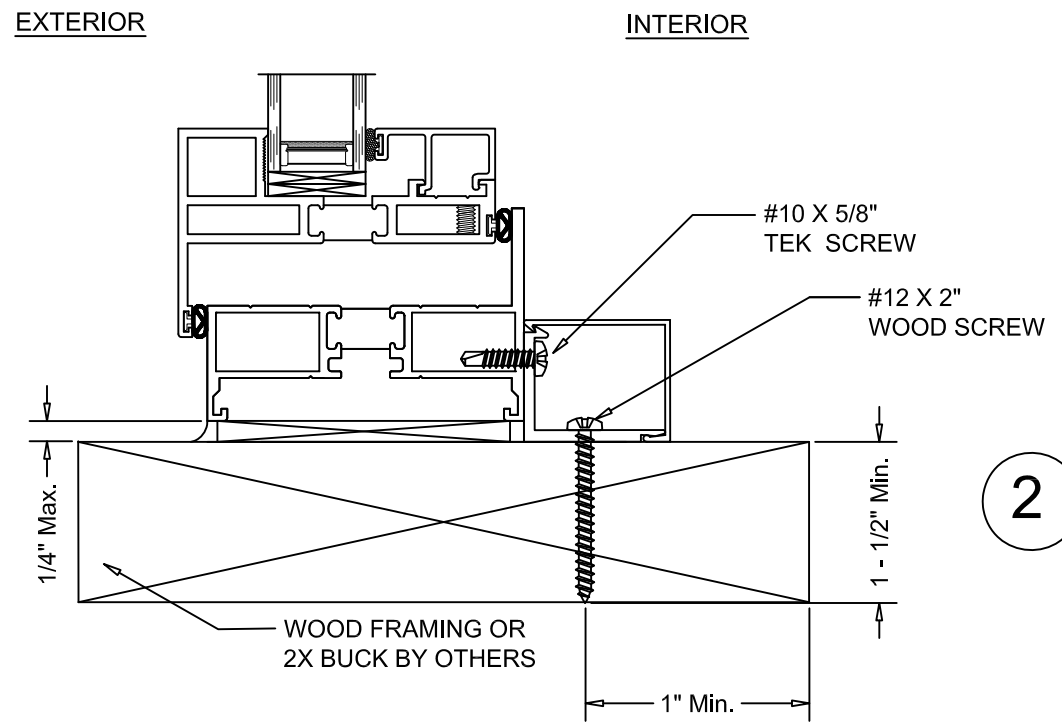
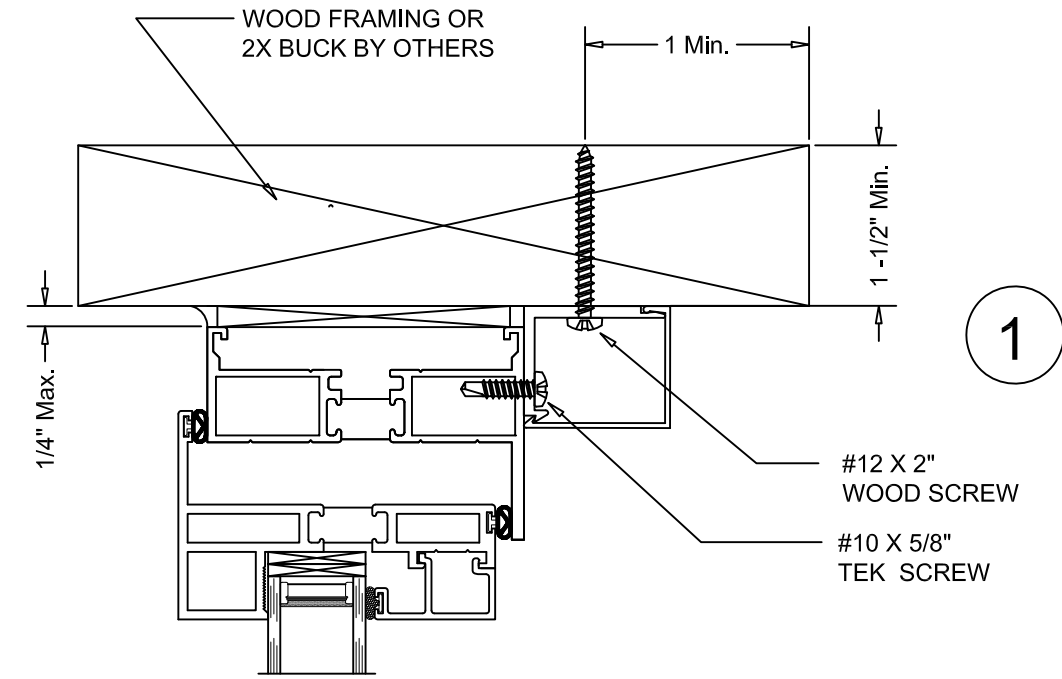
## GENERAL NOTES

QUAKER WINDOW PRODUCTS WILL NOT BE RESPONSIBLE FOR FIELD MEASUREMENT QUANTITIES, & INSTALLATION DESIGN. CONTRACTOR MUST VERIFY ALL DIMENSIONS.

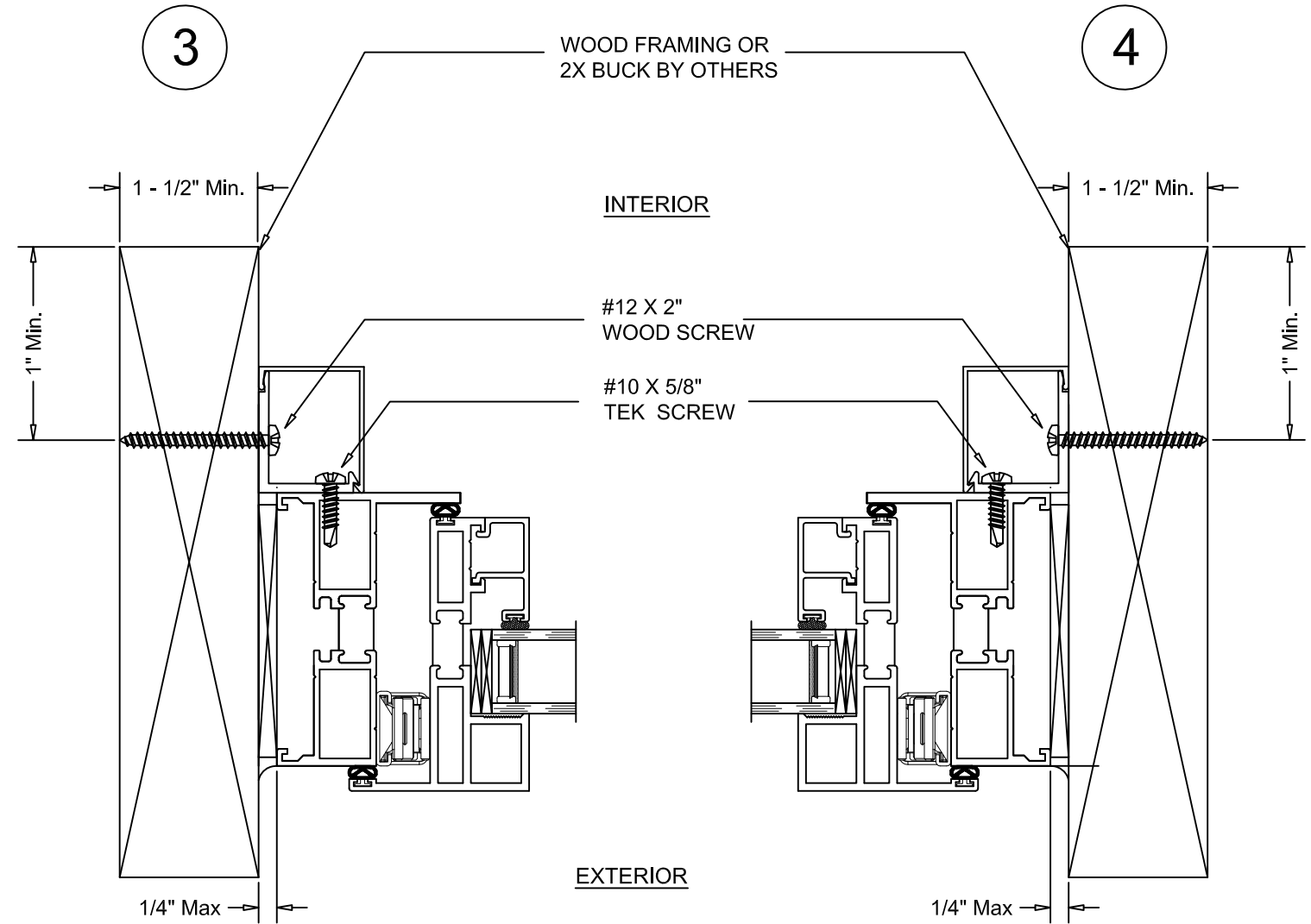
PHONE (573)-744-5211 FAX (573)-744-5586 COMMERCIAL www.quakerwindows.com	Scale: NONE	Sheet # of 5
504 Highway 63 South Freeburg, MO 65035 drafting@quakerwindows.com	Drawn By: BUD	Date: 07-24-2023



# NOTE: TYPICAL M700 PROJECT OUT / AWNING IMPACT WINDOW - TRIM & CLIP INSTALLATION



VERTICAL SECTION DETAIL  
WOOD FRAMING INSTALLATION



HORIZONTAL SECTION DETAIL  
WOOD FRAMING INSTALLATION

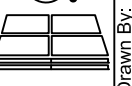


7/27/2023  
LUCAS TURNER  
FL PE 58201  
TURNER ENGINEERING &  
CONSULTING, INC.  
2428 OLD NATCHEZ TRACE TRL.  
CAMDEN, TN, 38320  
PH 941-380-1574

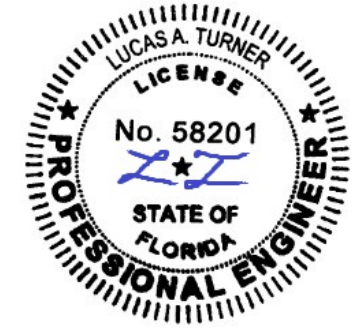
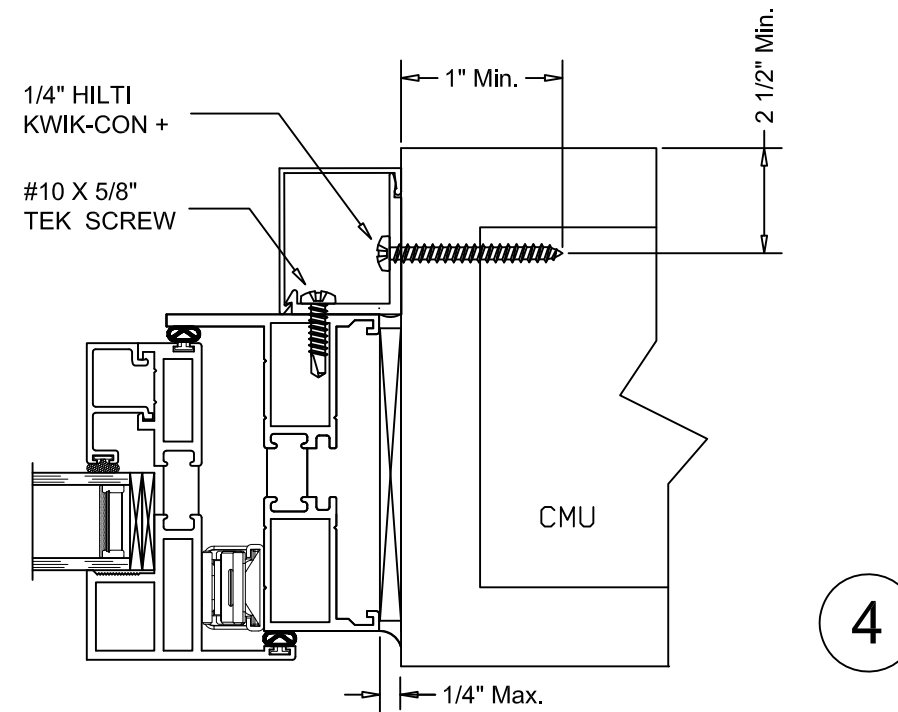
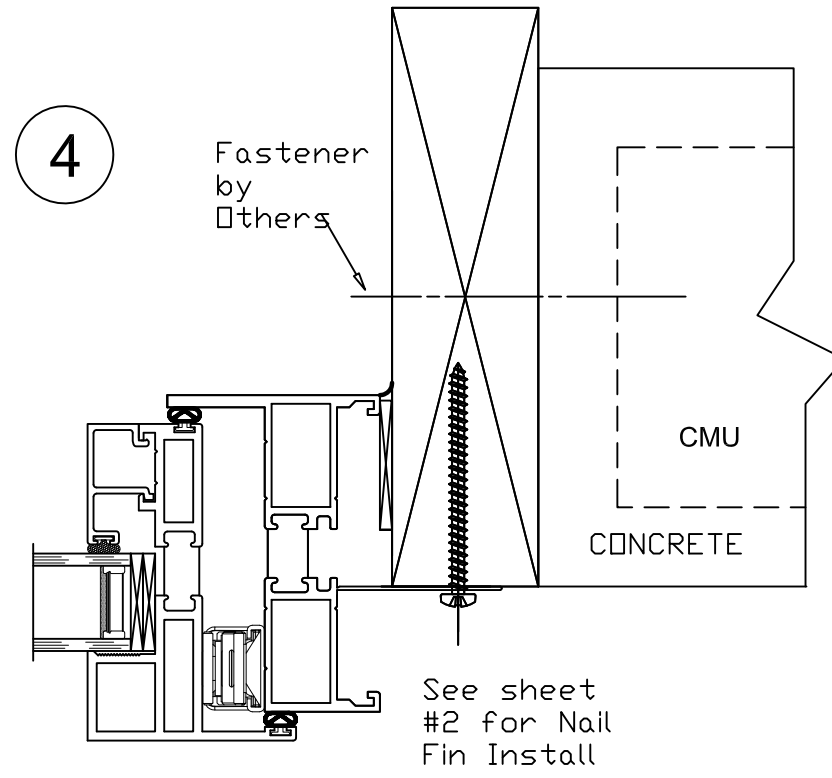
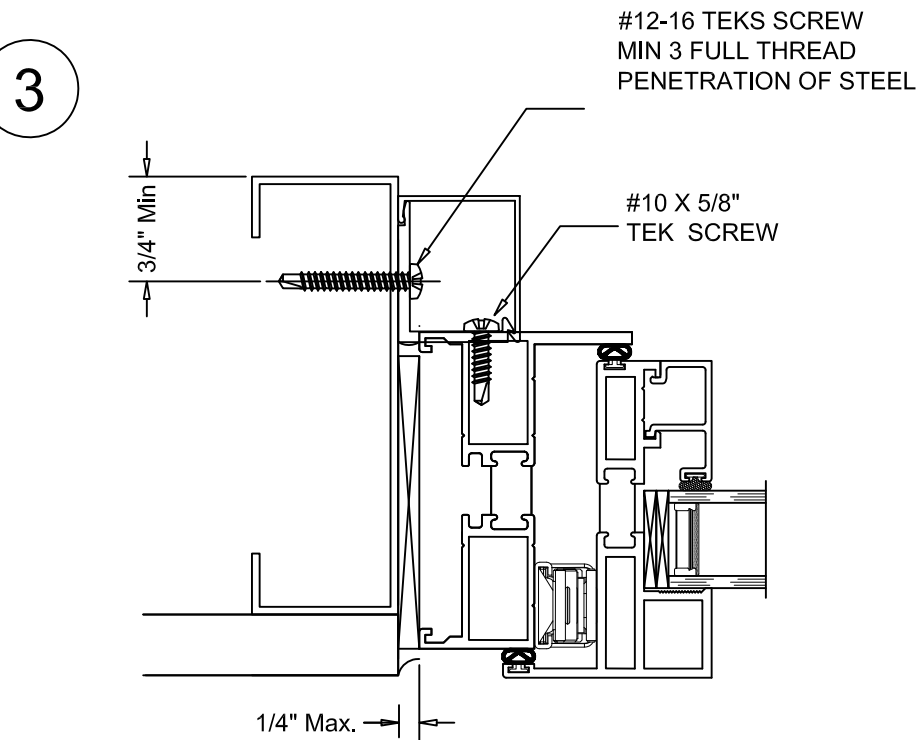
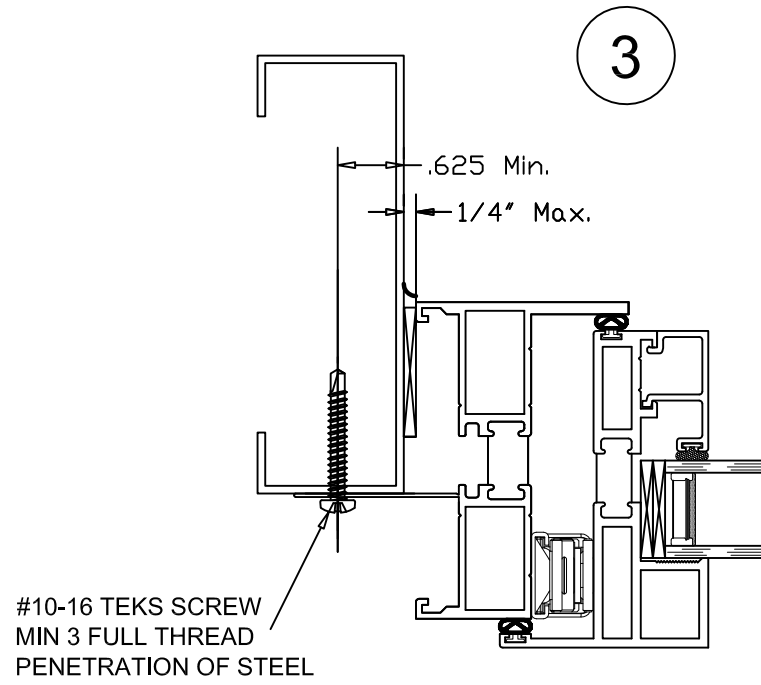
Project Name:  
**M700 IMPACT AWNING  
TRIM & CLIP  
INSTALLATION INSTRUCTIONS**

**GENERAL NOTES**  
QUAKER WINDOW PRODUCTS  
WILL NOT BE RESPONSIBLE  
FOR FIELD MEASUREMENT  
QUANTITIES, & INSTALLATION  
DESIGN. CONTRACTOR MUST  
VERIFY ALL DIMENSIONS.

PHONE (573)-744-5211  
FAX (573)-744-5586  
COMMERCIAL  
www.quakerwindows.com  
Scale: NONE  
Sheet #: 3 of 5  
504 Highway 63 South  
Freeburg, MO 65035  
drafting@quakerwindows.com  
Drawn By: BUD  
Date: 07-24-2023



# NOTE: TYPICAL M700 PROJECT OUT / AWNING WINDOW - ALTERNATE SUBSTRATE INSTALLATION



7/27/2023  
LUCAS TURNER  
FL PE 58201  
TURNER ENGINEERING &  
CONSULTING, INC.  
2428 OLD NATCHEZ TRACE TRL.  
CAMDEN, TN, 38320  
PH 941-380-1574

Project Name:  
**M700 IMPACT AWNING  
ALTERNATE SUBSTRAIGHT  
INSTALLATION INSTRUCTIONS**

**GENERAL NOTES**

QUAKER WINDOW PRODUCTS  
WILL NOT BE RESPONSIBLE  
FOR FIELD MEASUREMENT  
QUANTITIES, & INSTALLATION  
DESIGN. CONTRACTOR MUST  
VERIFY ALL DIMENSIONS.

PHONE (573)-744-5211  
FAX (573)-744-5586  
COMMERCIAL  
FAX (573)-744-5822  
www.quakerwindows.com

Scale: NONE  
Sheet #: 4 of 5

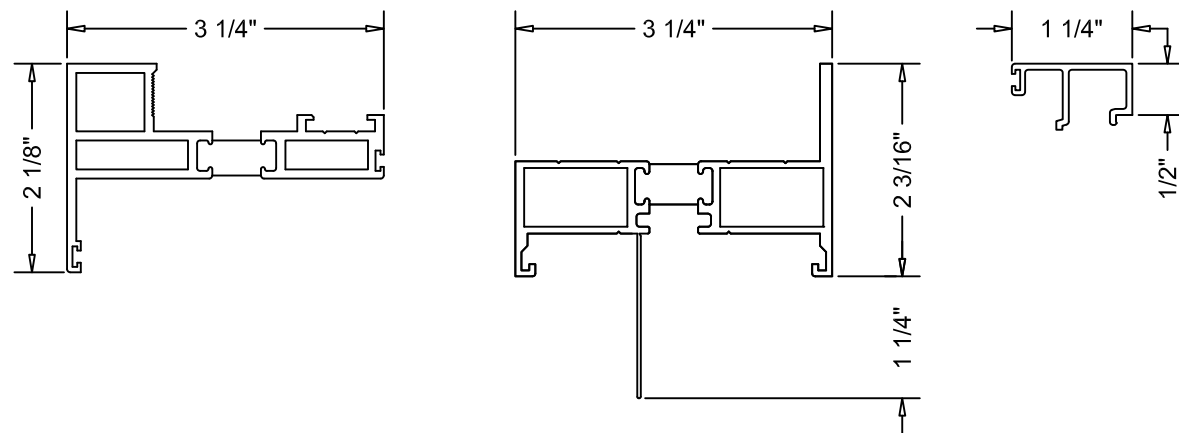
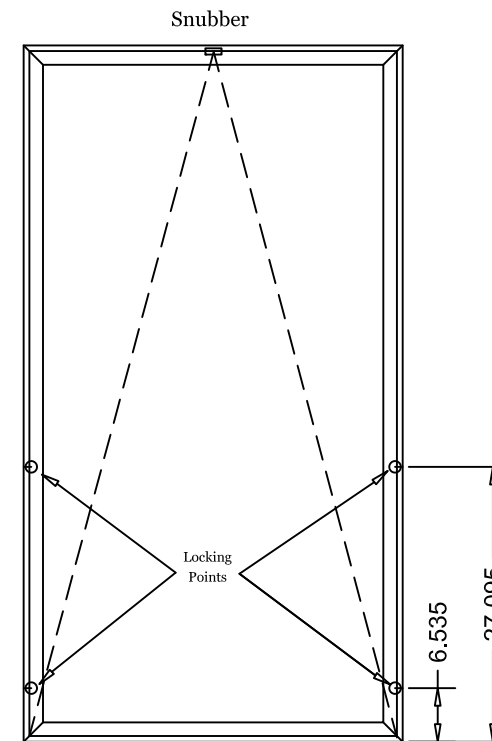
Drawn By: BUD  
Date: 07-24-2023

504 Highway 63 South  
Freeburg, MO 65035  
drafting@quakerwindows.com



# NOTE: TYPICAL M700 PROJECT OUT / AWNING WINDOW - BILL OF MATERIALS

Bill of Materials				
NO.	Description	Part Number	Material	Manufacturer
1	Sash	M21191	Aluminum 6063-T5	Tower Extrusions
2	Frame	M52732	Aluminum 6063-T5	Tower Extrusions
3	Glazing Bead	M21195	Aluminum 6063-T5	Tower Extrusions
5	Backbedding	RGS7700	Silicone	GE
6	Structural Sealant	Dow Corning 995	Silicone	Dow Corning
7	Maxim MP Lock Assy	24-44-02-001		Truth
8	28.5 Tie-Bar 2pt	14747-92 RH/14747-92 LH		Truth
9	Keeper	14485		Truth
10	24" 4-Bar Hinge	224		Advantage Hardware
11	11" Awn Operator	55-10-XX-201		Truth
12	Snubber	23555		Truth



Project Name: **M700 IMPACT AWNING**  
**BILL OF MATERIALS**  
**INSTALLATION INSTRUCTIONS**

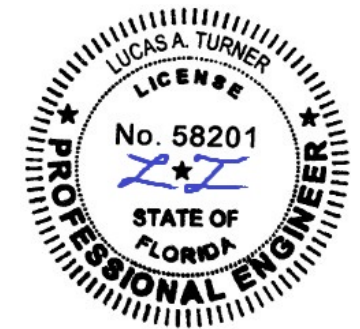
**GENERAL NOTES**

QUAKER WINDOW PRODUCTS WILL NOT BE RESPONSIBLE FOR FIELD MEASUREMENT QUANTITIES, & INSTALLATION DESIGN. CONTRACTOR MUST VERIFY ALL DIMENSIONS.

PHONE (573)-744-5211  
 FAX (573)-744-5586  
 COMMERCIAL  
 www.quakerwindows.com

Scale: NONE  
 Sheet #: 5 of 5

Drawn By: BUD  
 Date: 07-24-2023



7/27/2023  
 LUCAS TURNER  
 FL PE 58201  
 TURNER ENGINEERING &  
 CONSULTING, INC.  
 2428 OLD NATCHEZ TRACE TRL.  
 CAMDEN, TN, 38320  
 PH 941-380-1574