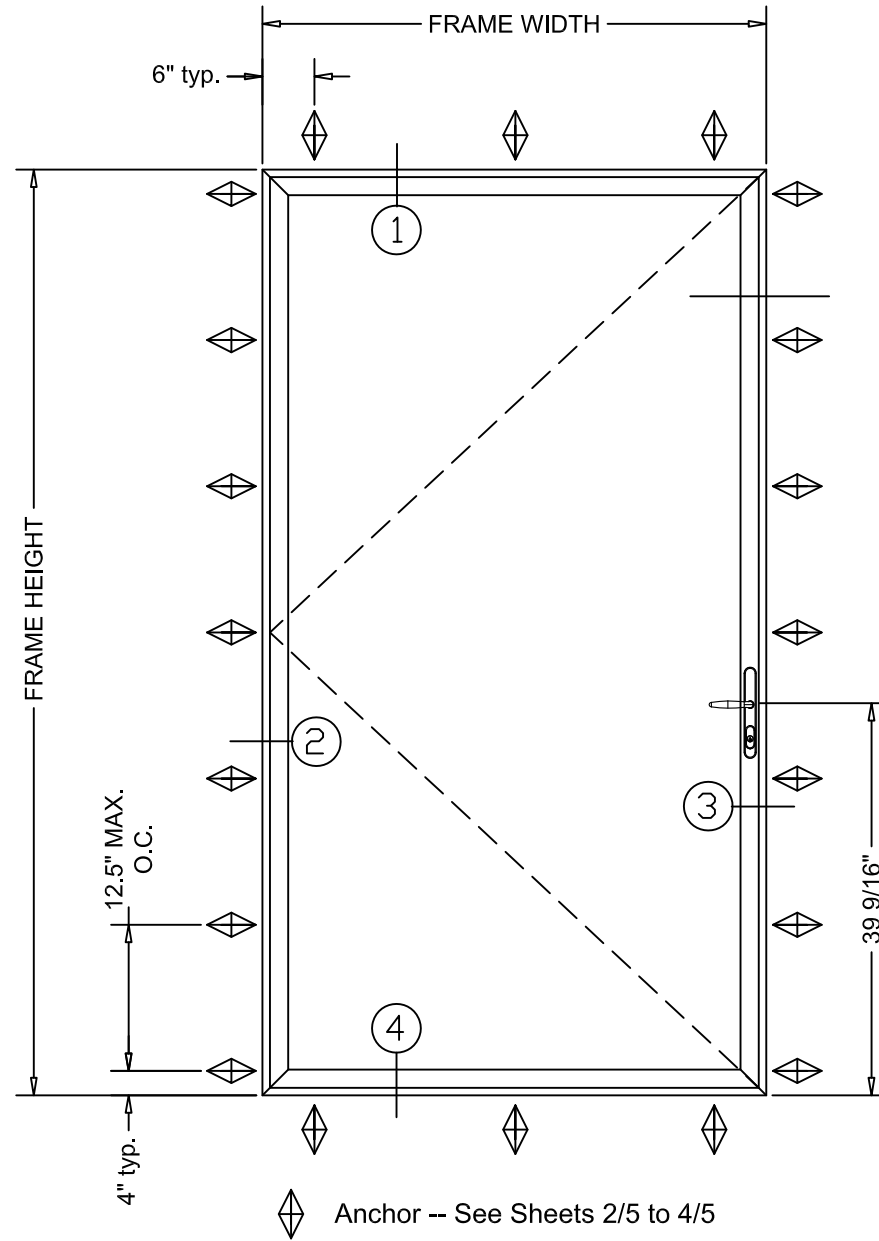
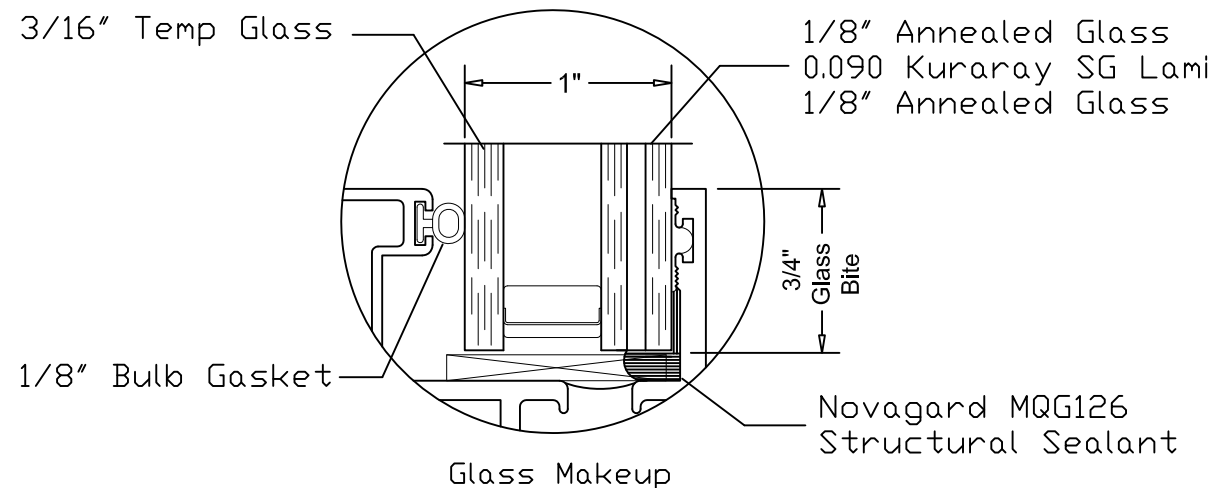


M700 OS-C Outswing Impact Terrace Door



Mark A

Maximum Sizes and Design Pressure				
FW	FH	DOOR-W	DOOR-H	Pressure
48"	96"	46 1/4"	94 1/8"	± 70 PSF
DAYLIGHT OPENING		38 1/4"	86 1/8"	



NOTES:

1. Installations depicted satisfy the requirements of the Florida Building Code, Building 8th; Edition (2023) for design wind pressures and overall sizes noted, and glazing shown herein is compliant with calculations in accordance with ASTM E 1300.
2. Wood bucks, wood framing, steel stud framing, concrete and concrete masonry are by others and shall be designed by the architect or engineer of record to resist the loads imparted to them.
3. Wood bucks and wood framing are assumed S-P-F (G=0.42) or denser. Buck width shall be greater than the door frame width. Tapered or partial width buck strips are not allowed.
4. Steel stud frames are assumed to be a minimum 16 gauge 33 KSI steel.
5. Concrete masonry (CMU) shall conform to ASTM C90
6. Concrete shall be minimum strength as indentified in Table 1, Sheet 4.
7. Wood screws shall meet requirements of ANSI/ASME B18.6.1.
8. TEKS screws shall be ASTM A510 Grade 1018 or equivalent.
9. Maximum shim thickness 1/4".
10. A minimum 4" on-center spacing shall be maintained between any two concrete/masonry fasteners.
11. Products are impact resistant and meet the requirements for Missile Level D, Wind Zone 3. See elevation sheet for Design Pressure and tested Glazing Unit construction.
12. Not for use in High Velocity Hurricane Zone (HVHZ).
13. Sealing and flashing strategies and water performance of the installed product are by others and not addressed by this document.



10/10/2023
 LUCAS TURNER
 FL PE 58201
 TURNER ENGINEERING &
 CONSULTING, INC.
 2428 OLD NATCHEZ TRACE TRL.
 CAMDEN, TN, 38320
 PH 941-380-1574

CONTENTS

Sheet 1/5	Elevations and Notes
Sheets 2/5 - 4/5	Installation Details
Sheet 5/5	Bill of Materials

INSTALLATION DETAILS

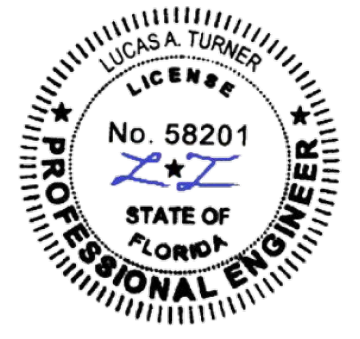
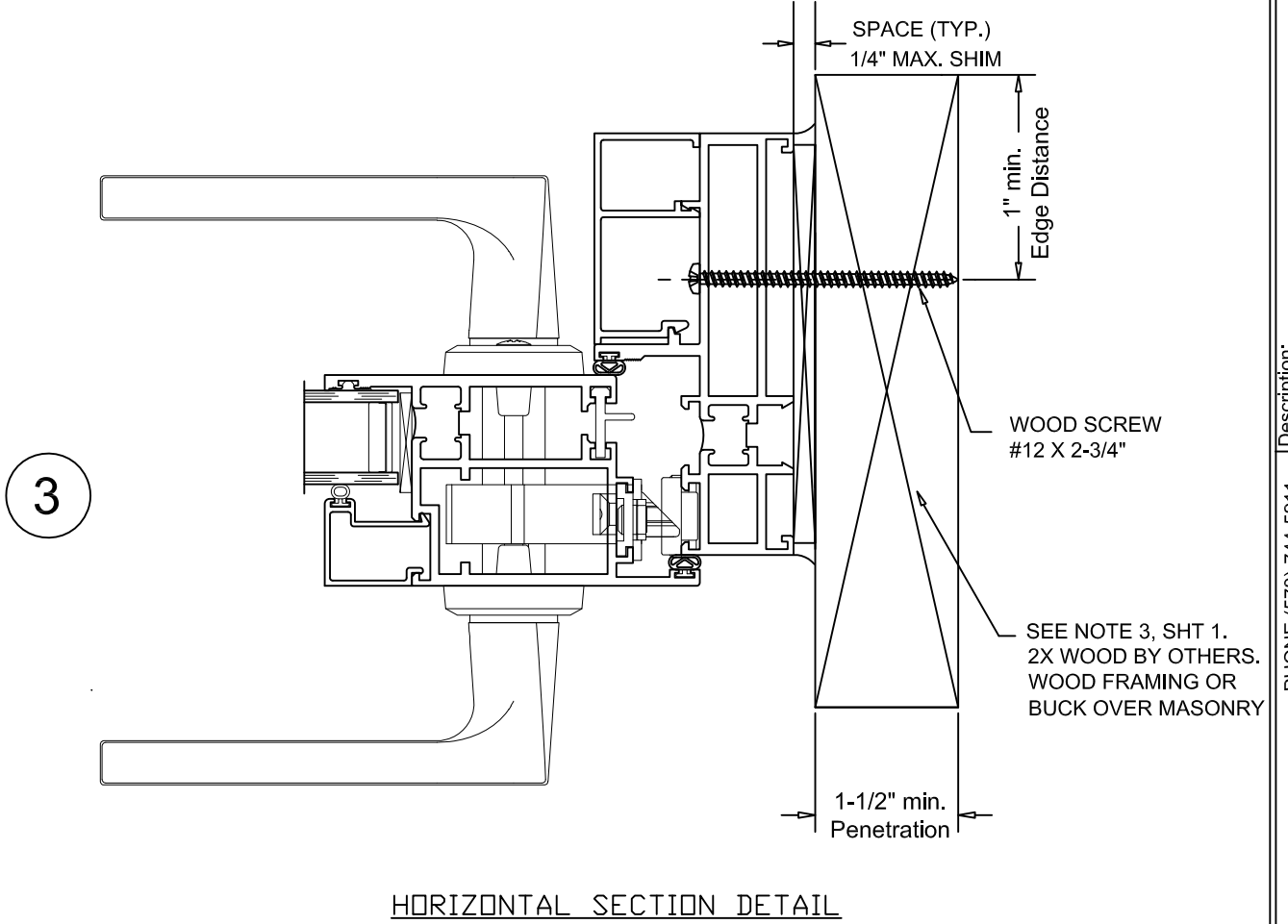
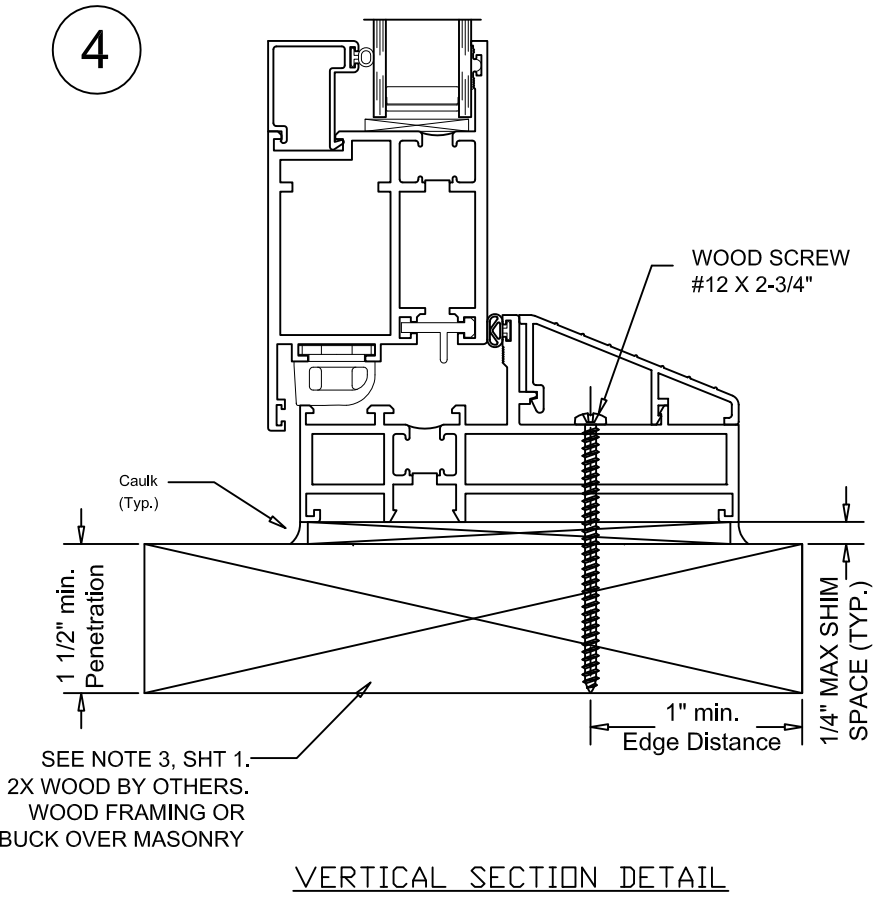
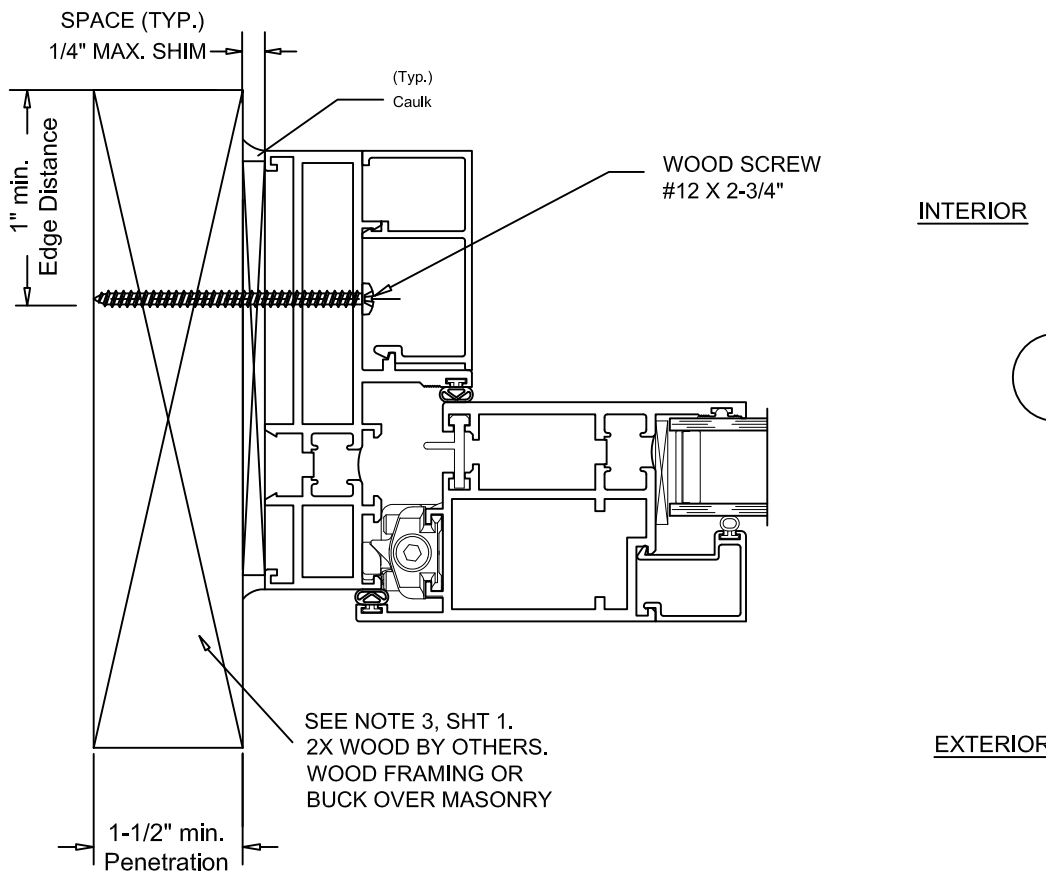
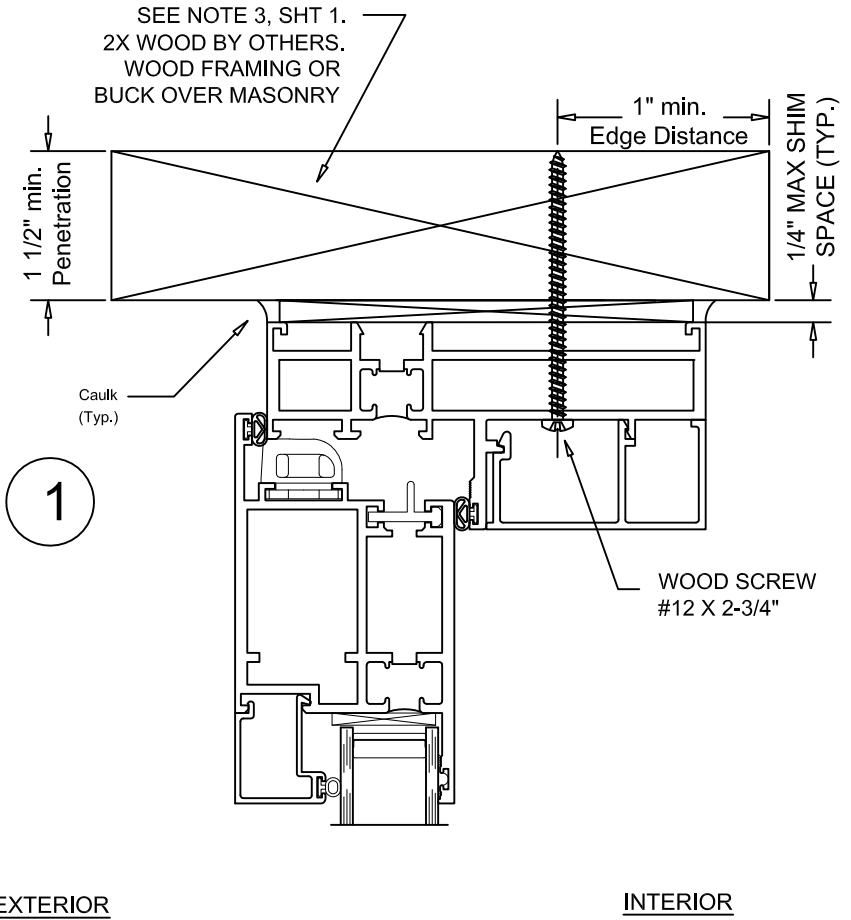
QUAKER WINDOW PRODUCTS
 WILL NOT BE RESPONSIBLE
 FOR FIELD MEASUREMENT
 QUANTITIES, & INSTALLATION
 DESIGN. CONTRACTOR MUST
 VERIFY ALL DIMENSIONS.

Revision #	Date	By

PHONE (573)-744-5211 FAX (573)-744-5586 COMMERCIAL www.quakerwindows.com	Scale: NONE	Sheet #: 1 of 5
504 Highway 63 South Freeburg, MO 65035 drafting@quakerwindows.com	BUD	
Date: 11-12-2021		

Project Name:	M700 OS-C IMPACT TERRACE DOOR
Drawing Name:	M700-WZ3-FPA



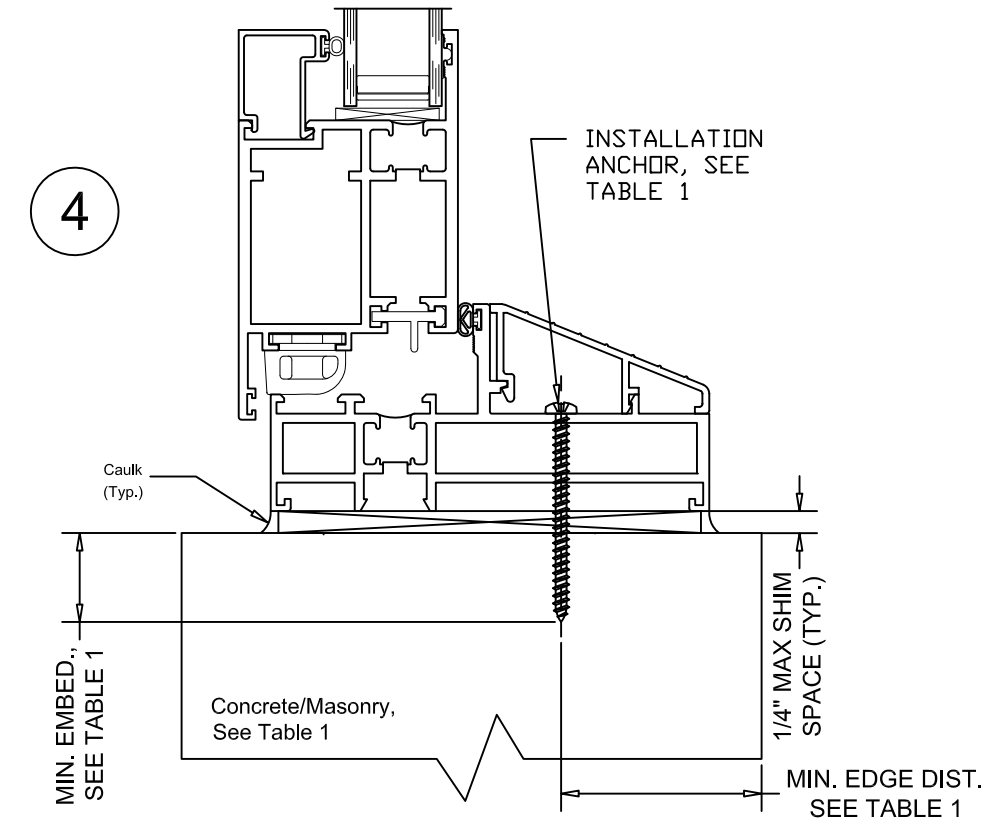
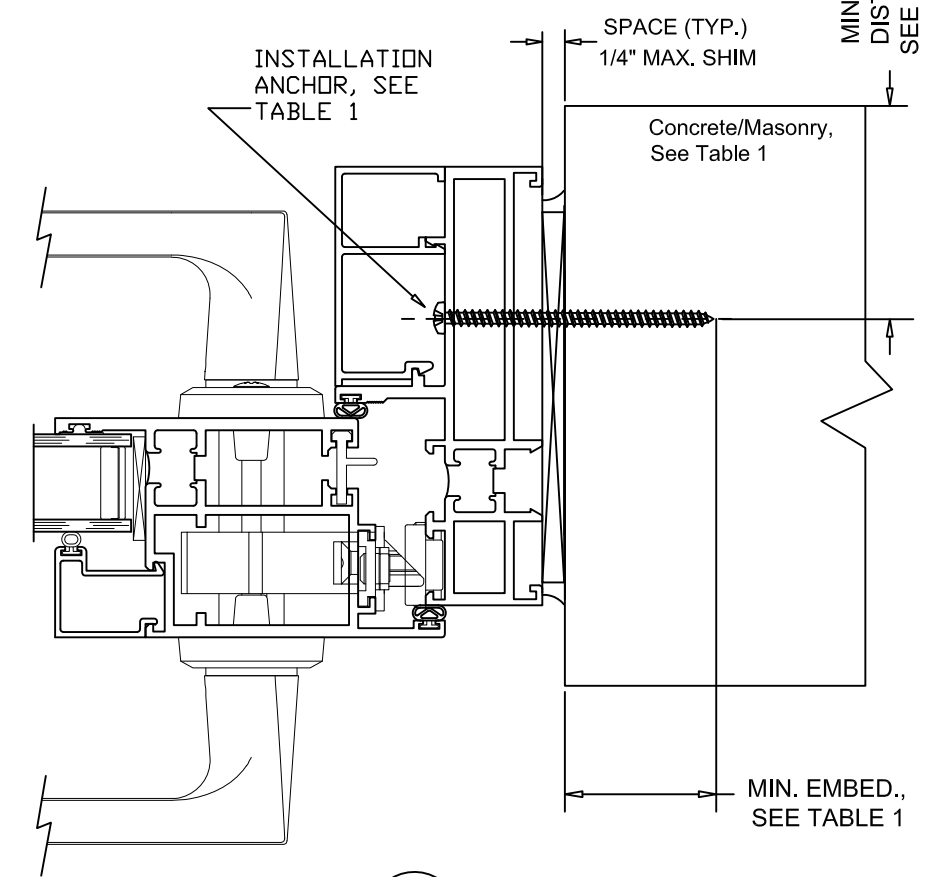
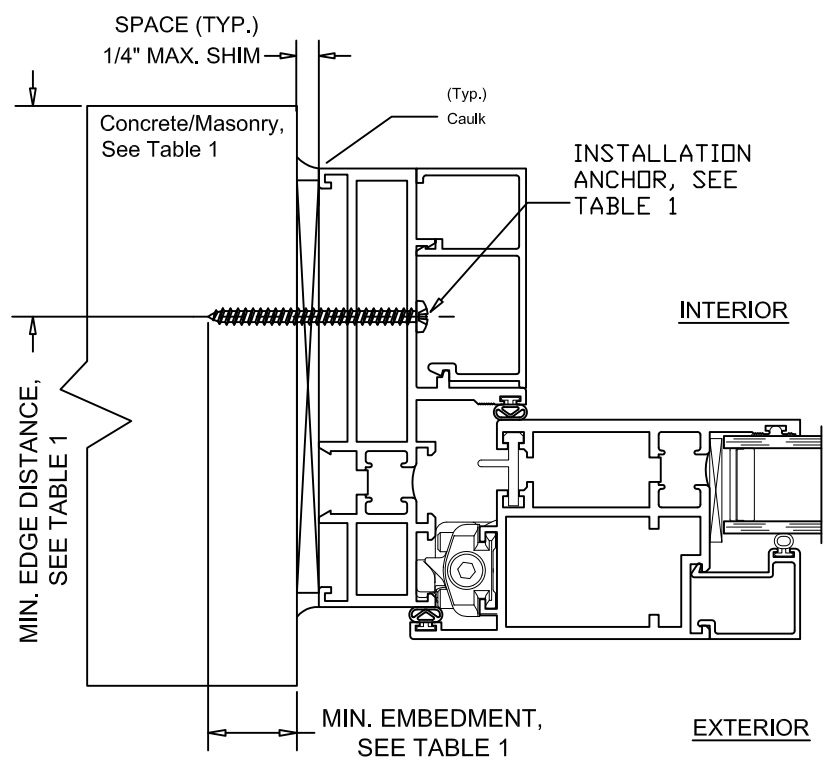
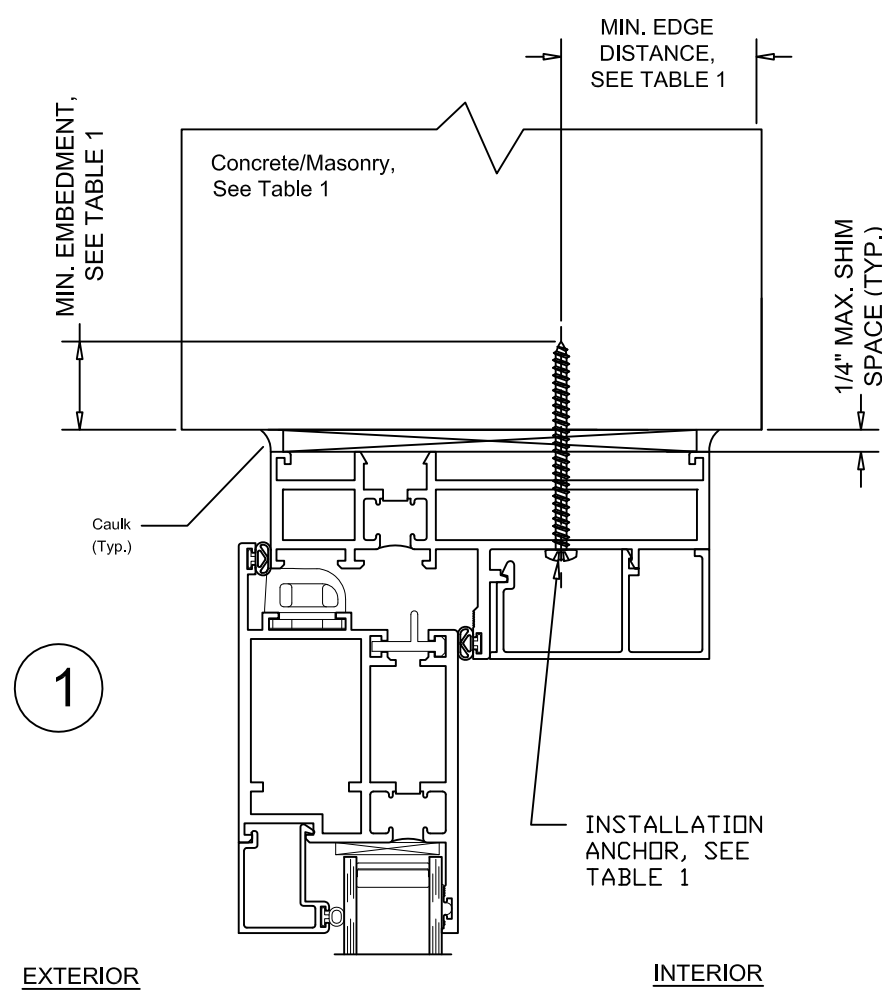


10/10/23
LUCAS TURNER
FL PE 58201
TURNER ENGINEERING &
CONSULTING, INC.
2428 OLD NATCHEZ TRACE TRL.
CAMDEN, TN, 38320
PH 941-380-1574

Project Name:		M700 OS-C	
Description:		WOOD INSTALL	
Drawing Name:		M700-WZ3-FPA	
By:	Date:	By:	Date:
By:	Date:	By:	Date:
By:	Date:	By:	Date:
Revision #:	Revision #:	Revision #:	Revision #:
1		2	
<p>QUAKER WINDOW PRODUCTS WILL NOT BE RESPONSIBLE FOR FIELD MEASUREMENT QUANTITIES, & INSTALLATION DESIGN. CONTRACTOR MUST VERIFY ALL DIMENSIONS.</p>			
PHONE (573)-744-5211	FAX (573)-744-5586	Scale:	NONE
COMMERCIAL	FAX (573)-744-5822	www.quakerwindows.com	Sheet # 2 of 5
504 Highway 63 South		Freeburg, MO 65035	
drafting@quakerwindows.com		drawing@quakerwindows.com	
Drawn By:	BUD	Date:	11-12-2021

WOOD FRAMING (FOR SILL ON SLAB SEE SHEET 4)

WOOD FRAMING



HORIZONTAL SECTION DETAIL
CONCRETE/MASONRY/CMU

VERTICAL SECTION DETAIL
CONCRETE/MASONRY/CMU

ANCHOR DESCRIPTION	SUBSTRATE TYPE	MIN. EMBEDMENT	MIN. EDGE DISTANCE
1/4" HILTI KWIK-CON+	SOLID CONCRETE (3 KSI MIN.)	1"	2-1/2"
	CMU MASONRY (ASTM C-90)	1"	2-1/2"
1/4" DEWALT ULTRACON+	SOLID CONCRETE (3.05 KSI MIN.)	1-3/8"	1"
	CMU MASONRY (ASTM C-90)	1-1/4"	1"
1/4" ITW TAPCON W/ ADVANCED THREADFORM TECHNOLOGY	SOLID CONCRETE (2 KSI MIN.)	1"	1-1/2"



10/10/23
LUCAS A. TURNER
FL PE 58201
TURNER ENGINEERING &
CONSULTING, INC.
2428 OLD NATCHEZ TRACE TRL.
CAMDEN, TN, 38320
PH 941-380-1574

Project Name: **M700 OS-C**
CONCRETE/MASONRY INSTALL
 Drawing Name: **M700-WZ3-FPA**

INSTALLATION DETAILS

QUAKER WINDOW PRODUCTS WILL NOT BE RESPONSIBLE FOR FIELD MEASUREMENT QUANTITIES, & INSTALLATION DESIGN. CONTRACTOR MUST VERIFY ALL DIMENSIONS.

By:	Date:	Revision #:
By:	Date:	Revision #:
By:	Date:	Revision #:

Scale: NONE
 Sheet #: 4 of 5

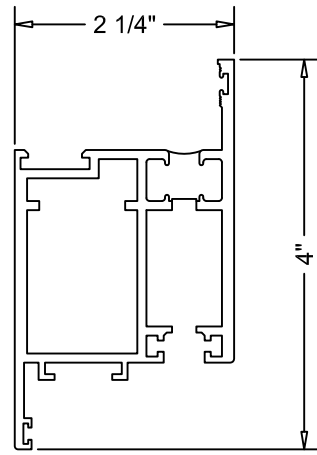
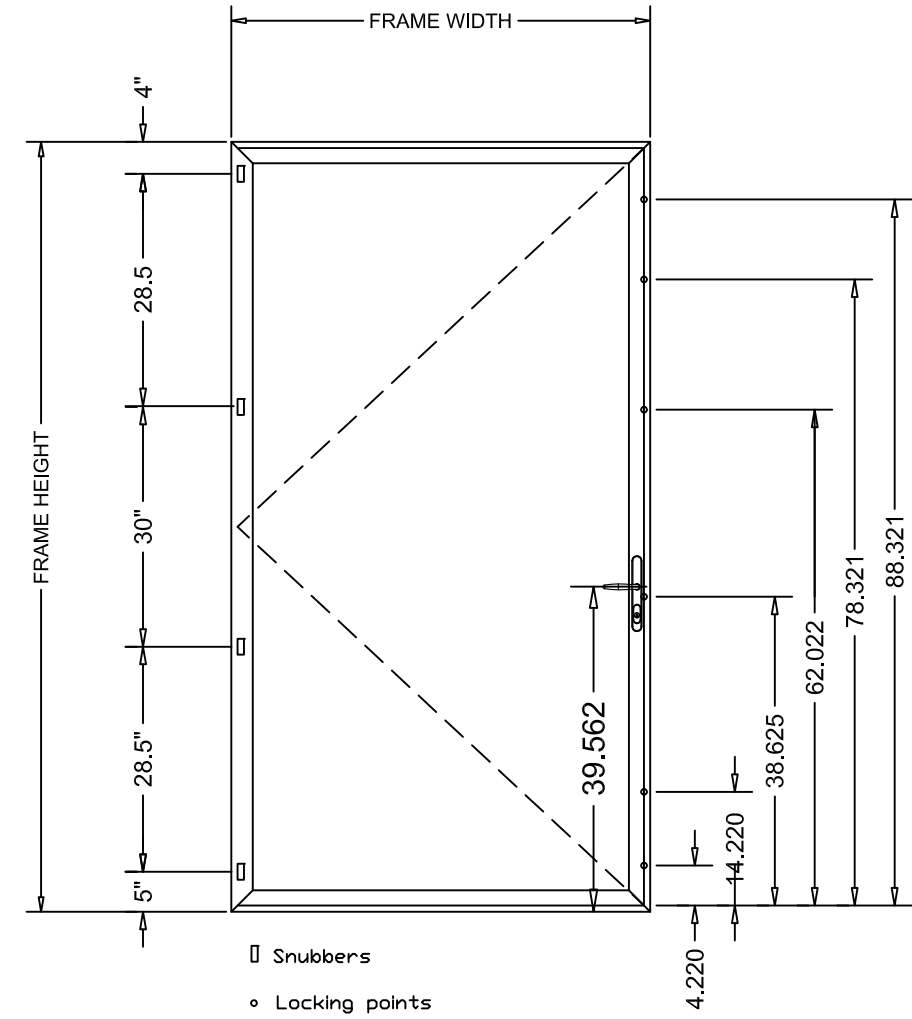
Drawn By: BUD
 Date: 11-12-2021

PHONE (573)-744-5211
 FAX (573)-744-5586
 COMMERCIAL
 FAX (573)-744-5822
 www.quakerwindows.com

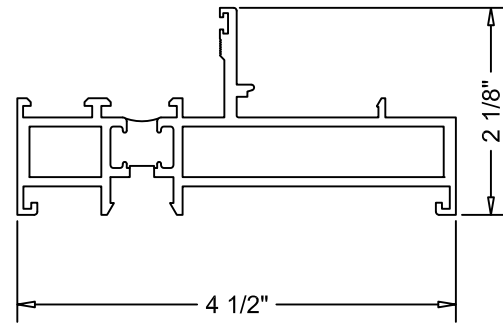
504 Highway 63 South
 Freeburg, MO 65035
 drafting@quakerwindows.com

QUAKER
COMMERCIAL WINDOW AND ROOF

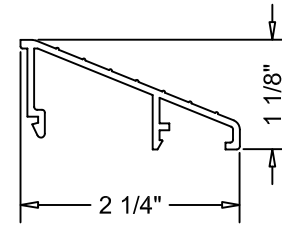
Bill of Materials				
NO.	Description	Part Number	Material	Manufacturer
1	Frame HD,SILL, & JB	M21551	Aluminum 6063-T6	Quaker
2	Fastener Cover HD & JB	M23234	Aluminum 6063-T6	Quaker
3	Fastener Cover Sill	M21548	Aluminum 6063-T6	Quaker
4	Panel HD, Sill, & Jambs	M21547	Aluminum 6063-T6	Quaker
5	Glazing Stops	M21549	Aluminum 6063-T6	Quaker
6	Frame Corner Key	M21550	Aluminum 6063-T6	Quaker
7	Panel Corner Key	M57746	Aluminum 6063-T6	Quaker
8	Magicube Hinges (Pair)	1204L-MGC		Fapim
9	Adjustable Snubber (4)	4358		Giesse
10	Adjustable Strike Plate	3653-84		Amesbury Truth
11	Fixed MP Keeper (5)	01343000K		Amesbury Truth
12	Multi-Point Lock	11852203		Hoppe
13	Adjustable Saddle Pawl (5)	1395000		Amesbury Truth
14	Connecting Rods	3524		Giesse
15	Dallas Outswing Keyed	10730103		Hoppe
16	Glazing Sealant	MQG126		Novagard
17	Setting Block	SB125-1062X2-Z		Secon



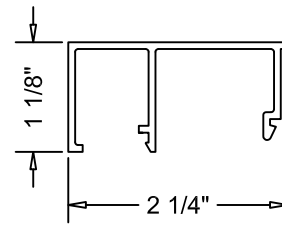
1



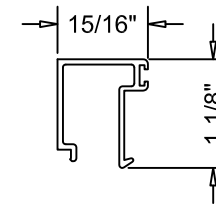
1



1



1



1



10/10/23
 LUCAS TURNER
 FL PE 58201
 TURNER ENGINEERING &
 CONSULTING, INC.
 2428 OLD NATCHEZ TRACE TRL.
 CAMDEN, TN, 38320
 PH 941-380-1574

INSTALLATION DETAILS

Project Name: M700 OS-C
 BILL OF MATERIALS

Drawing Name: M700-WZ3-FPA

PHONE (573)-744-5211
 FAX (573)-744-5586
 COMMERCIAL
 www.quakerwindows.com

504 Highway 63 South
 Freeburg, MO 65035
 drafting@quakerwindows.com

Drawn By: BUD
 Date: 11-12-2021

QUAKER WINDOW PRODUCTS
 WILL NOT BE RESPONSIBLE
 FOR FIELD MEASUREMENT
 QUANTITIES, & INSTALLATION
 DESIGN. CONTRACTOR MUST
 VERIFY ALL DIMENSIONS.

Scale: NONE

Sheet #: 5 of 5

Revision #:

By: Date: Revision #:

By: Date: Revision #:

By: Date: Revision #:

By: Date: Revision #:

By: Date: Revision #: