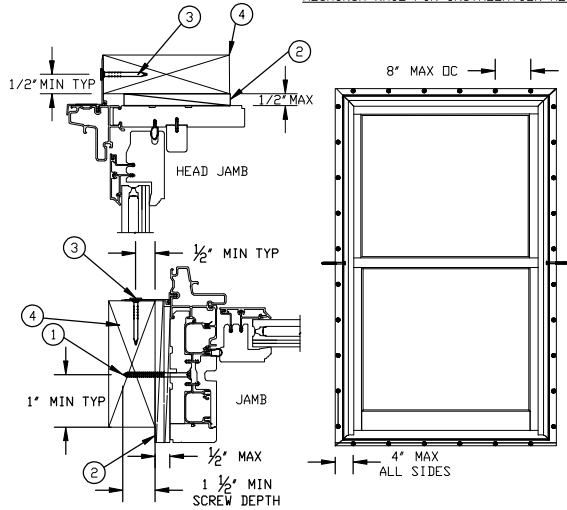
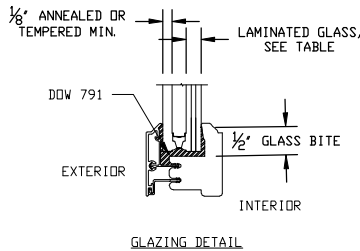
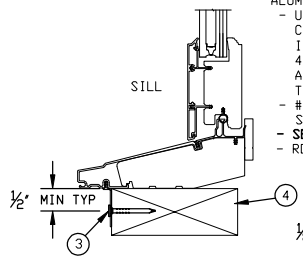


ALUMINUM NAIL FIN INSTALLATION METHOD

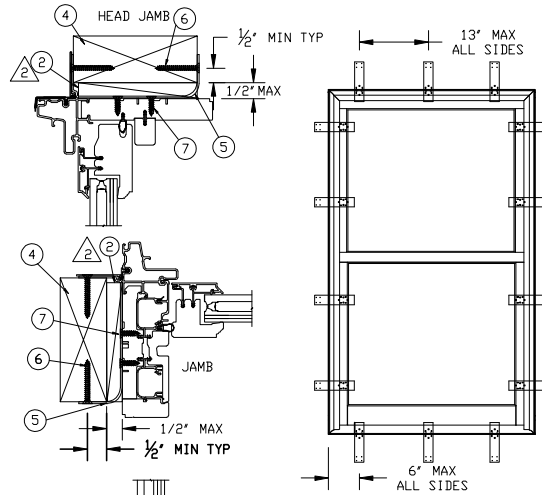


ALUMINUM NAILING FIN INSTALLATION METHOD:

- UNIT MUST NOT BE IN DIRECT CONTACT WITH EITHER CONCRETE OR TREATED BUCK MATERIAL. IF SHIM SPACE IS LESS THAN 1/8" WRAPPING THE UNIT ON ALL 4 SIDES WITH WINDOW FLASHING TAPE IS REQUIRED AS A BARRIER BETWEEN THE UNIT AND CONCRETE OR TREATED LUMBER.
- #8 X 1 1/4" PAN HEAD OR WAFER HEAD SCREWS MAY BE SUBSTITUTED FOR 2" ROOFING NAILS.
- SECURE MIDSPAN OF JAMBS WITH #8 X 3" SCREWS.
- ROOFING NAILS MUST HAVE FULL EMBEDMENT.

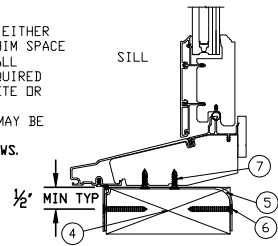


STRUCTURAL BRACKET INSTALLATION

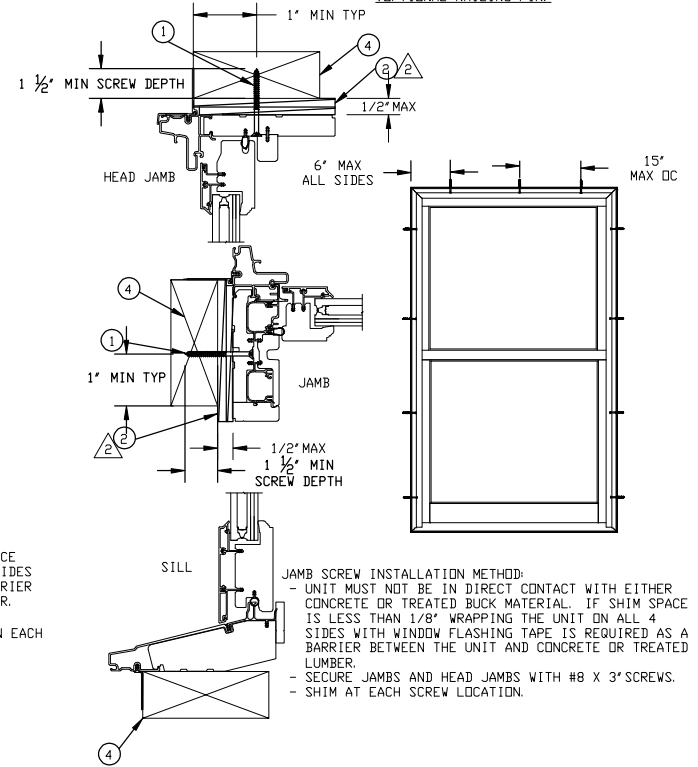


STRUCTURAL BRACKET INSTALLATION METHOD:

- UNIT MUST NOT BE IN DIRECT CONTACT WITH EITHER CONCRETE OR TREATED BUCK MATERIAL. IF SHIM SPACE IS LESS THAN 1/8" WRAPPING THE UNIT ON ALL 4 SIDES WITH WINDOW FLASHING TAPE IS REQUIRED AS A BARRIER BETWEEN THE UNIT AND CONCRETE OR TREATED LUMBER.
- ATTACH TO THE UNIT WITH TWO #8 X 3/8" SCREWS.
- ATTACH TO THE BUCK WITH TWO #8 X 1 1/2" SCREWS ON EACH SIDE OF THE BUCK.
- SCREWS MUST HAVE FULL EMBEDMENT.



SCREW THROUGH JAMB INSTALLATION (OPTIONAL NAILING FIN)



JAMB SCREW INSTALLATION METHOD:

- UNIT MUST NOT BE IN DIRECT CONTACT WITH EITHER CONCRETE OR TREATED BUCK MATERIAL. IF SHIM SPACE IS LESS THAN 1/8" WRAPPING THE UNIT ON ALL 4 SIDES WITH WINDOW FLASHING TAPE IS REQUIRED AS A BARRIER BETWEEN THE UNIT AND CONCRETE OR TREATED LUMBER.
- SECURE JAMBS AND HEAD JAMBS WITH #8 X 3" SCREWS.
- SHIM AT EACH SCREW LOCATION.

NOTES:

- THIS PRINT IS FOR STRUCTURAL PERFORMANCE ONLY. FOR FLASHING & SEALING REQUIREMENTS, REFER TO THE INSTALLATION INSTRUCTIONS.
- SHIMS:
 - A SHIM MUST BE PLACED AT THE CHECK RAILS AND 4'-6" FROM EACH CORNER.
 - ALL OTHERS MUST BE PLACED A MAX OF 15 INCHES APART.
- IF CHEMICALLY TREATED LUMBER IS USED FOR BUCK MATERIAL, FASTENERS INTO THE BUCK MUST BE A MINIMUM OF 0.90 OZ/FT² ZINC HOT DIPPED GALVANIZED OR STAINLESS STEEL TYPE 304 OR 316.

CATEGORY:
DOUBLE HUNG

UNIT TYPE:
UDHG2IZ3

ITEM NO	REF NO	DESCRIPTION
7	-----	#8 x 5/8" WOOD SCREW
6	-----	#8 x 1 1/2" WOOD SCREW
5	-----	STRUCTURAL BRACKET
4	-----	2X WOOD BUCK BY OTHERS
3	-----	2" ROOFING NAILS
2	-----	SHIM
1	-----	#8 X 3.000 WOOD SCREW

UNSPECIFIED TOLERANCES

DECIMALS:	ANGLE DEG:
XX ± .03	± .5
XXX ± .012	
LINEAL:	FAB LINEAL:
+ .125	± NA
- .000	
MATERIAL:	
	NA

TYPE		LAMINATED GLASS MAKEUP	
A	3.1mm(.122") ANN + .090KURARAY PVB + 3.1mm(.122") ANN		
UNIT	MAX FRAME SIZE	DP RATING	GLASS OPTION
UL DBLHNG G2 IZ3	45 1/4 x 79 1/2	+65/-65	TYPE A

MARVIN RESEARCH & DEVELOPMENT

COLLECTION: ULTIMATE			
DWG TYPE: INSTALLATION			
DESCRIPTION: INSTALLATION FL# 28289			
CHK:	SIZE: B	CLASS: MISC	DWG NO: 00114710
APP:	SCALE: NA	DATE: 04/27/15	DWG BY: BORNEMAN, SKIP
			SHEET: 1 OF 1

NOTICE - CONFIDENTIAL INFORMATION

The information in this document is privileged and strictly confidential. The information contained herein shall be used only by Marvin Windows and Doors employees and by those agents or suppliers granted official written permission. If the reader of this document is not the intended recipient, or the employee or agent of the intended recipient, please delete this document from all data storage devices, and destroy all hard copies. Any unauthorized dissemination, distribution, copying or other use of the information contained in this document is strictly prohibited.