

Mark "A"

ANCHOR SEE SHEETS 3/6 TO 5/6

Minimum Glazing
 1" Insulating Glass
 EXT - 3/16" Annealed Glass
 INT - 1/4" Laminated Glass
 See Glazing Detail Sheet 5/6

Maximum Dimensions and Design Pressure				
FW	FH	DLO-W	DLO-H	Pressure
84"	72"	39-3/16"	68-1/4"	± 65 PSF
84"	21-3/8"	80-1/4"	17-5/8"	Missile D

Louvers for use with PTAC units only (see separate approval)

NOTES:

1. Installations depicted satisfy the requirements of the Florida Building Code, Building 8th Edition (2023) for the design wind pressures and overall sizes noted.
2. Wood bucks, wood framing, steel stud framing, concrete and concrete masonry are by others and shall be designed by the architect or engineer of record to resist the loads imparted to them.
3. Wood buck strips and wood frames are assumed S-P-F (G=0.42) or denser. Required for concrete or masonry wall construction. Buck width shall be greater than the window frame width. Tapered or partial width buck strips are not allowed.
4. For installation to concrete or concrete masonry, 2x buck (minimum 1-1/2" thickness) shall be installed to the the opening to provide adequate thickness for the proper placement of the anchors shown in this drawing.
5. Metal stud frames are assumed to be a minimum 16 gauge 33 KSI steel.
6. Wood screws shall be corrosion resistant and meet the requirements of ANSI/ASME B18.6.1
7. TEKS screws shall be corrosion resistant and shall be ASTM A510 Grade 1018 or equivalent.
8. Maximum shim space permitted is 1/4". Shims shall be non-compressible and load bearing type.
9. All interior and exterior perimeter surfaces of the window must be caulked. Sealing and flashing strategies and overall water performance of the installed product are by others and not addressed by this product approval.
10. Products are impact resistant and do not require approved protection devices if used in wind-borne debris regions.
11. Not for use in High Velocity Hurricane Zone (HVHZ).
12. Design pressures indicated in charts in this drawing include Comparative Analysis per FBC 1709.5.1 Exception 3.ii, and are as limited by ASTM E 1300, as well as tested water, structural, and cyclic pressures.

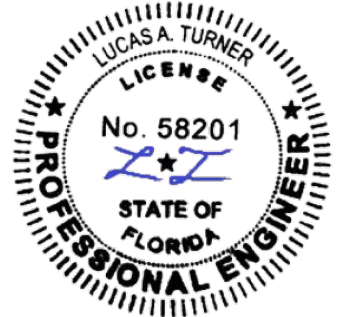
Allowable Design Pressures (+ and -, psf)

		Overall Width, FW (in.)							
		56	60	64	68	72	76	80	84
Fixed Window Height, FH (in.) (Does not include Louver)	72	65.0	65.0	65.0	65.0	65.0	65.0	65.0	65.0
	76	65.0	65.0	65.0	64.5	61.5	59.1	56.8	
	80	65.0	61.2	57.8	54.8	52.2	50.2		
	84	56.0	52.6	49.6	47.1	44.8			
	88	48.5	45.5	42.9	40.7				
	92	42.3	39.7	37.4					
	96	37.1	34.8						

Not Allowed (Frame Area > Test)

CONTENTS:

- Sheet 1/6 to 2/6 Elevations and Notes
- Sheet 3/6 to 5/6 Details
- Sheet 6/6 BOM and Components



7/27/2023
 LUCAS A. TURNER, P.E.
 FL PE # 58201
 TURNER ENGINEERING & CONSULTING, INC.
 2428 OLD NATCHEZ TRC TRL
 CAMDEN, TN 38320
 PH. 941-380-1574

Project Name: **M700 FIXED-FIXED OVER LOUVER IMPACT INSTALLATION INSTRUCTIONS**

Drawing: **FPA-M700-FX-LOUV**

Description: **ELEVATIONS AND NOTES**

QUAKER WINDOW PRODUCTS WILL NOT BE RESPONSIBLE FOR FIELD MEASUREMENT, QUANTITIES, & INSTALLATION DESIGN. CONTRACTOR MUST VERIFY ALL DIMENSIONS.

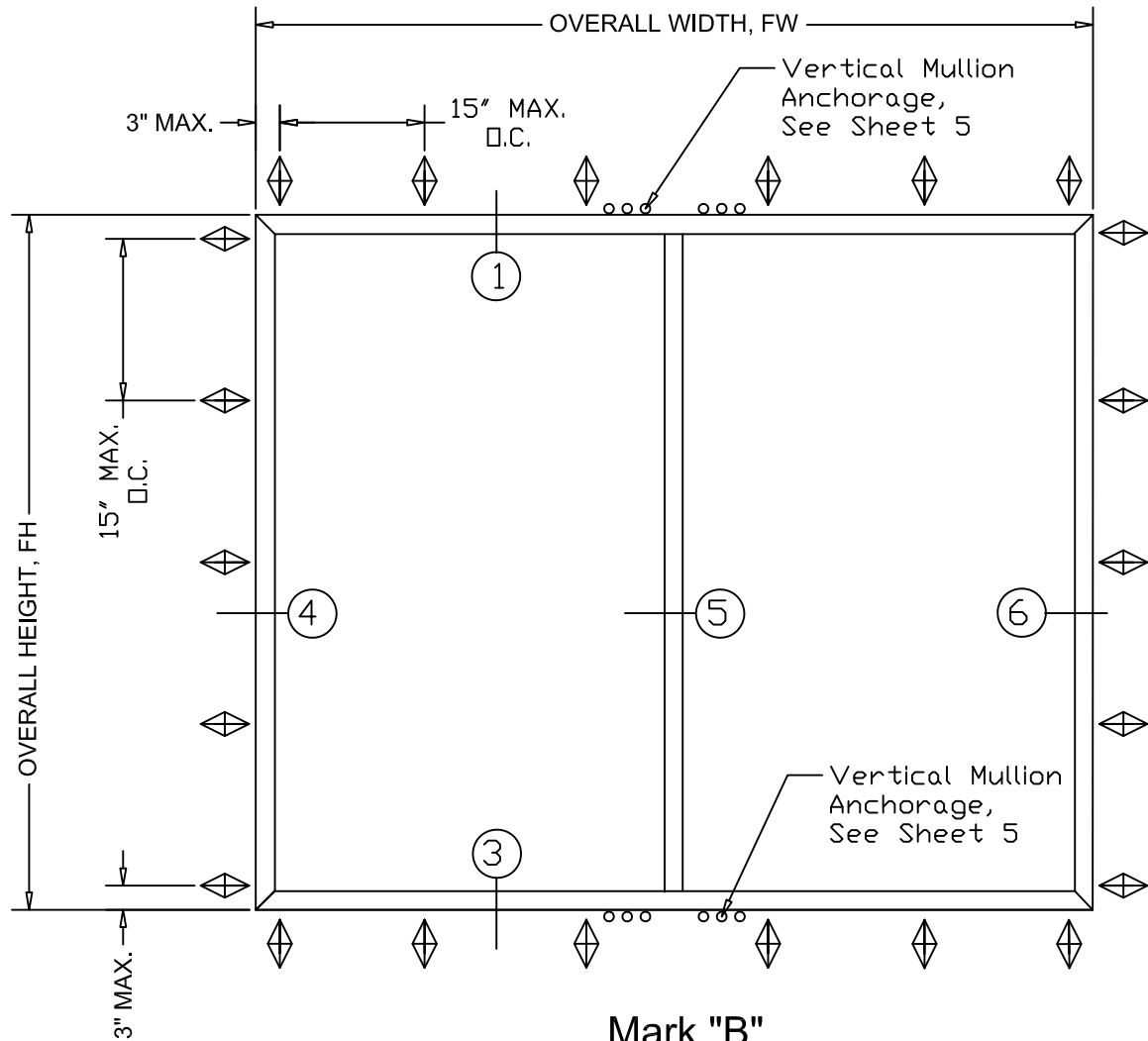
PHONE (573)-744-5211 FAX (573)-744-5586 COMMERCIAL FAX (573)-744-5822 www.quakerwindows.com

Scale: **NONE**

Sheet #: **1 of 6**

504 Highway 63 South Freeburg, MO 65035 drafting@quakerwindows.com

Date: **07-27-23**



Mark "B"

ANCHOR SEE SHEETS 3/6 TO 5/6

Minimum Glazing
 1" Insulating Glass
 EXT - 3/16" Annealed Glass
 INT - 1/4" Laminated Glass
 See Glazing Detail Sheet 5/6

Maximum Dimensions and Design Pressure				
FW	FH	DLQ-W	DLQ-H	Pressure
84"	72"	39-3/16"	68-1/4"	± 65 PSF Missile D



7/27/2023
 LUCAS A. TURNER, P.E.
 FL PE # 58201
 TURNER ENGINEERING
 & CONSULTING, INC.
 2428 OLD NATCHEZ TRC TRL
 CAMDEN, TN 38320
 PH. 941-380-1574

Allowable Design Pressures (+ and -, psf)

		Overall Width, FW (in.)										
		56	60	64	68	72	76	80	84	88	92	96
Fixed Window Height, FH (in.)	60	65.0	65.0	65.0	65.0	65.0	65.0	65.0	65.0	65.0	65.0	65.0
	64	65.0	65.0	65.0	65.0	65.0	65.0	65.0	65.0	65.0	65.0	
	68	65.0	65.0	65.0	65.0	65.0	65.0	65.0	65.0	65.0		
	72	65.0	65.0	65.0	65.0	65.0	65.0	65.0	65.0			
	76	65.0	65.0	65.0	64.5	61.5	59.1	56.8				
	80	65.0	61.2	57.8	54.8	52.2	50.2					
	84	56.0	52.6	49.6	47.1	44.8						
	88	48.5	45.5	42.9	40.7							
	92	42.3	39.7	37.4								
	96	37.1	34.8									

Not Allowed (Frame Area > Test)

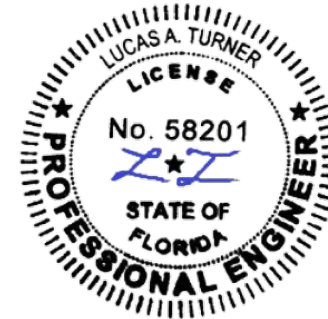
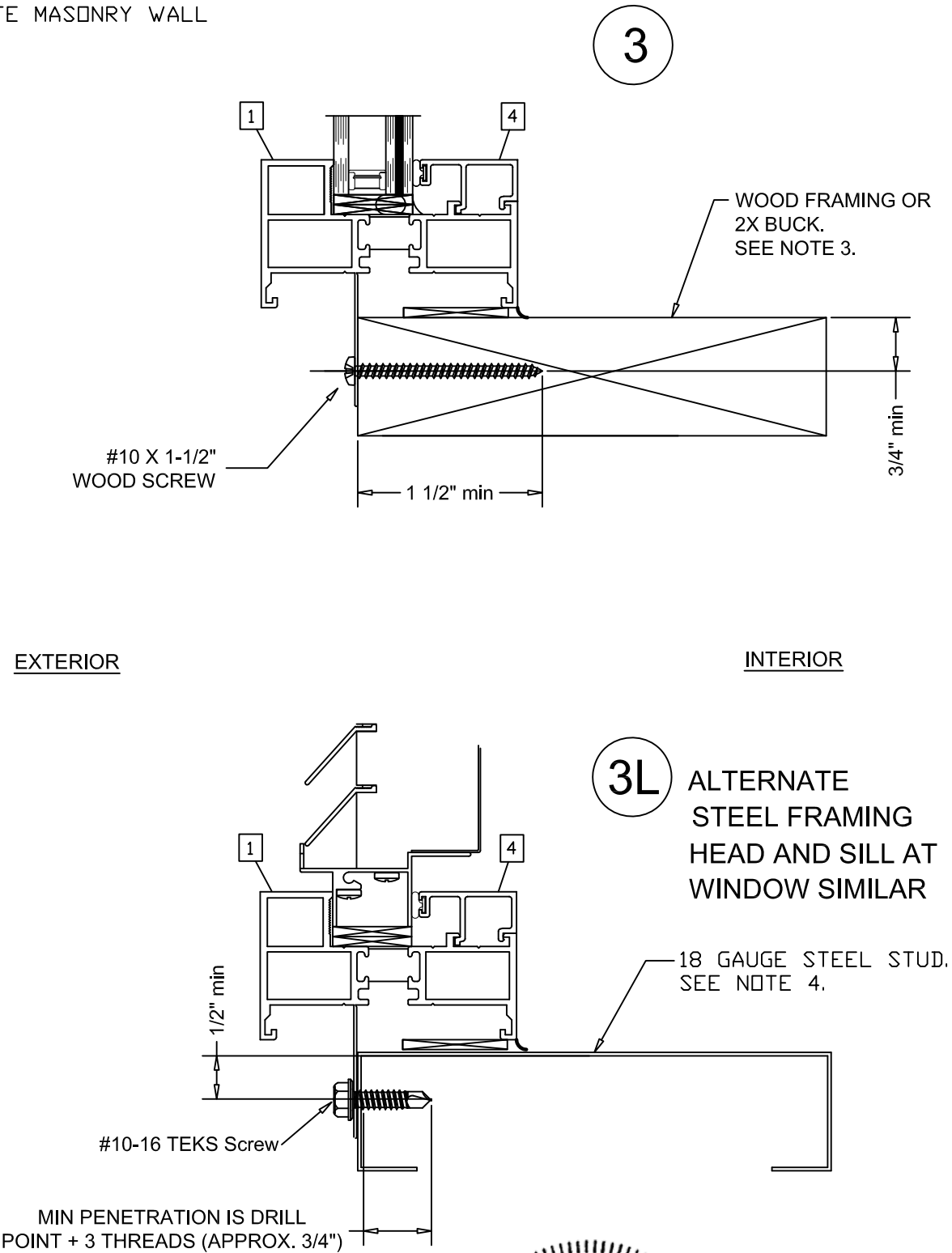
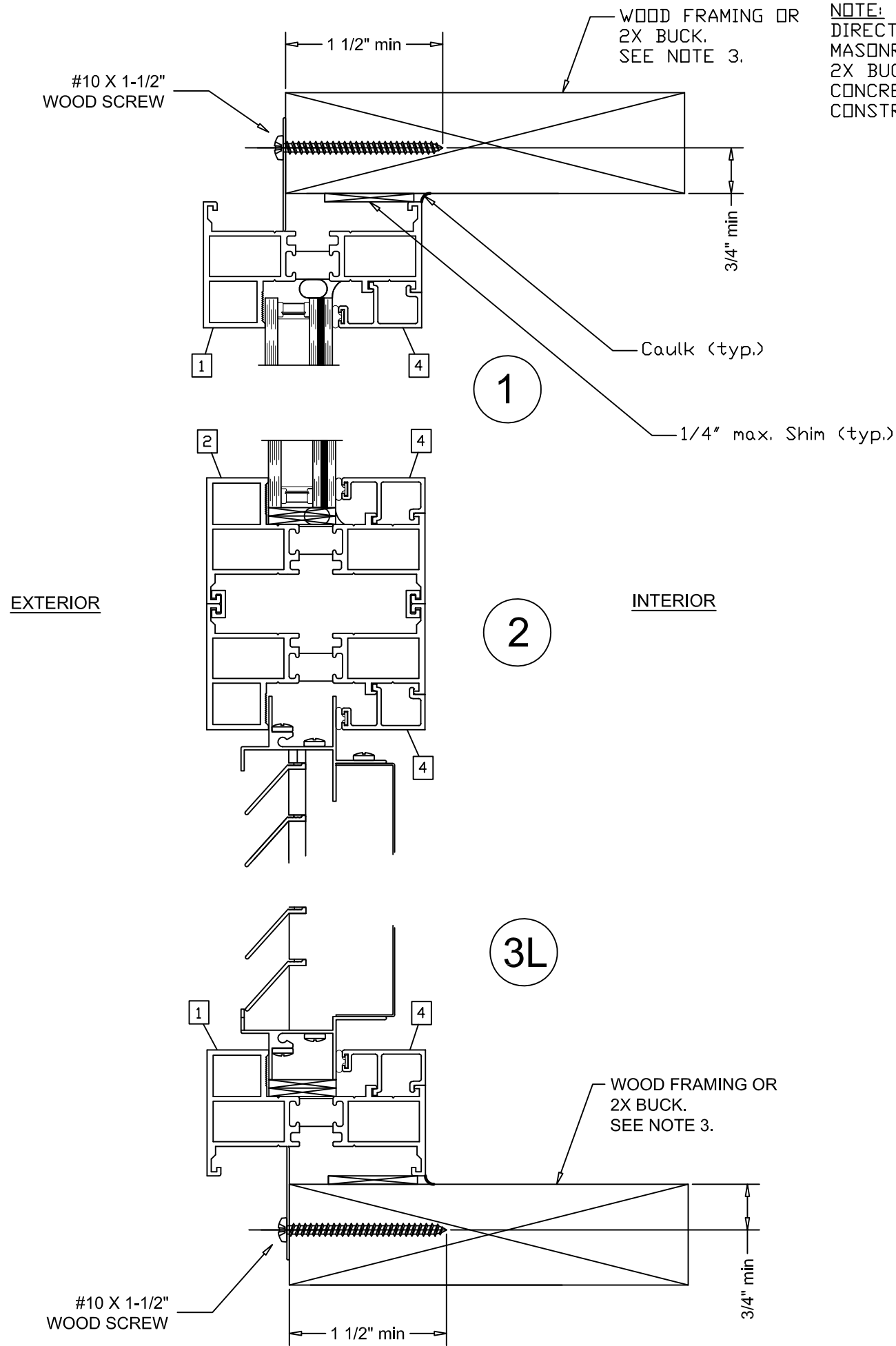
Project Name:
**M700 FIXED-FIXED
 OVER LOUVER IMPACT
 INSTALLATION INSTRUCTIONS**

ELEVATIONS AND NOTES
 QUAKER WINDOW PRODUCTS
 WILL NOT BE RESPONSIBLE
 FOR FIELD MEASUREMENT,
 QUANTITIES, & INSTALLATION
 DESIGN. CONTRACTOR MUST
 VERIFY ALL DIMENSIONS.
 Drawing: FPA-M700-FX-LOUV

DESCRIPTION:
 QUAKER WINDOW PRODUCTS
 WILL NOT BE RESPONSIBLE
 FOR FIELD MEASUREMENT,
 QUANTITIES, & INSTALLATION
 DESIGN. CONTRACTOR MUST
 VERIFY ALL DIMENSIONS.
 PHONE (573)-744-5211
 FAX (573)-744-5586
 COMMERCIAL
 FAX (573)-744-5822
 www.quakerwindows.com
 Scale: NONE
 Sheet #: 2 of 6
 504 Highway 63 South
 Freeburg, MO 65035
 drafting@quakerwindows.com
 Drawn By: ---
 Date: 07-27-23



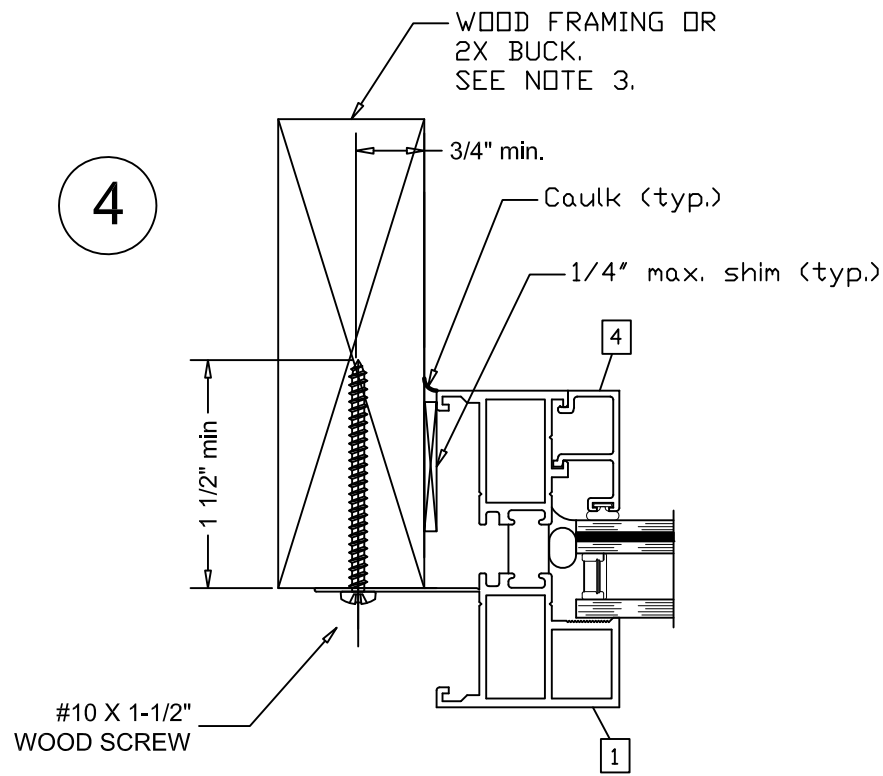
NOTE: NOT APPROVED FOR ANCHORAGE DIRECTLY TO CONCRETE OR CONCRETE MASONRY. 2X BUCK (BY OTHERS) REQUIRED FOR CONCRETE OR CONCRETE MASONRY WALL CONSTRUCTION.



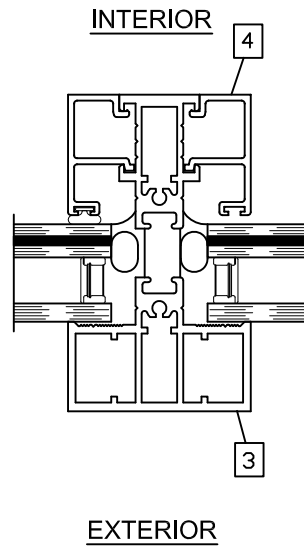
7/27/2023
 LUCAS A. TURNER, P.E.
 FL PE # 58201
 TURNER ENGINEERING
 & CONSULTING, INC.
 2428 OLD NATCHEZ TRC TRL
 CAMDEN, TN 38320
 PH. 941-380-1574

Project Name:		M700 FIXED-FIXED OVER LOUVER IMPACT INSTALLATION INSTRUCTIONS	
Description:		QUAKER WINDOW PRODUCTS WILL NOT BE RESPONSIBLE FOR FIELD MEASUREMENT QUANTITIES, & INSTALLATION DESIGN. CONTRACTOR MUST VERIFY ALL DIMENSIONS.	
PHONE (573)-744-5211 FAX (573)-744-5586 COMMERCIAL www.quakerwindows.com	Scale:	NONE	Sheet #:
504 Highway 63 South Freeburg, MO 65035 drafting@quakerwindows.com	Drawn By:	---	3 of 6
Date:	07-27-23		

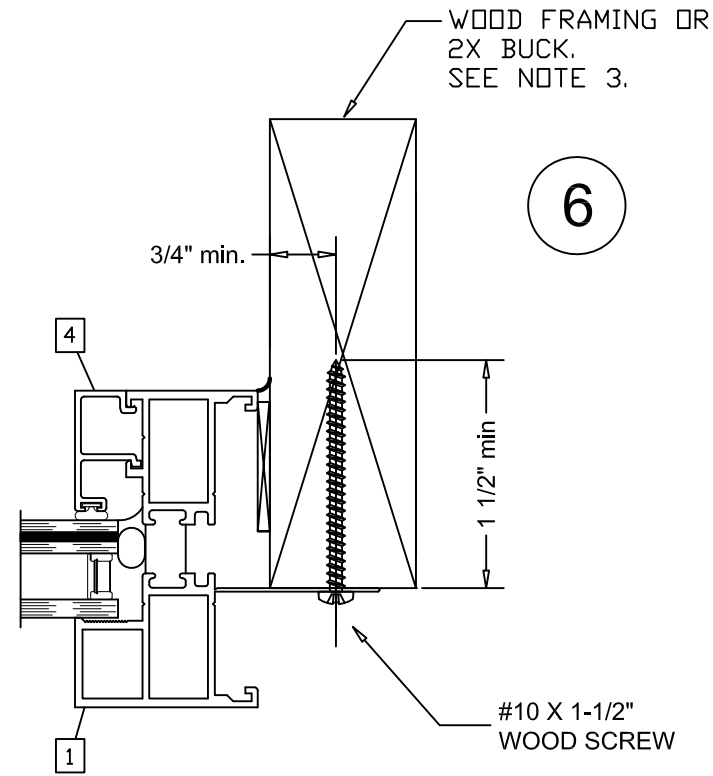
4



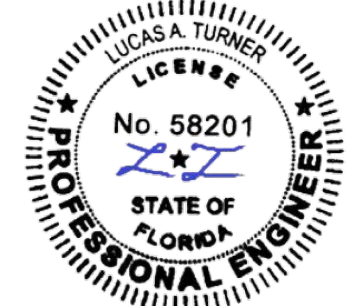
5



6

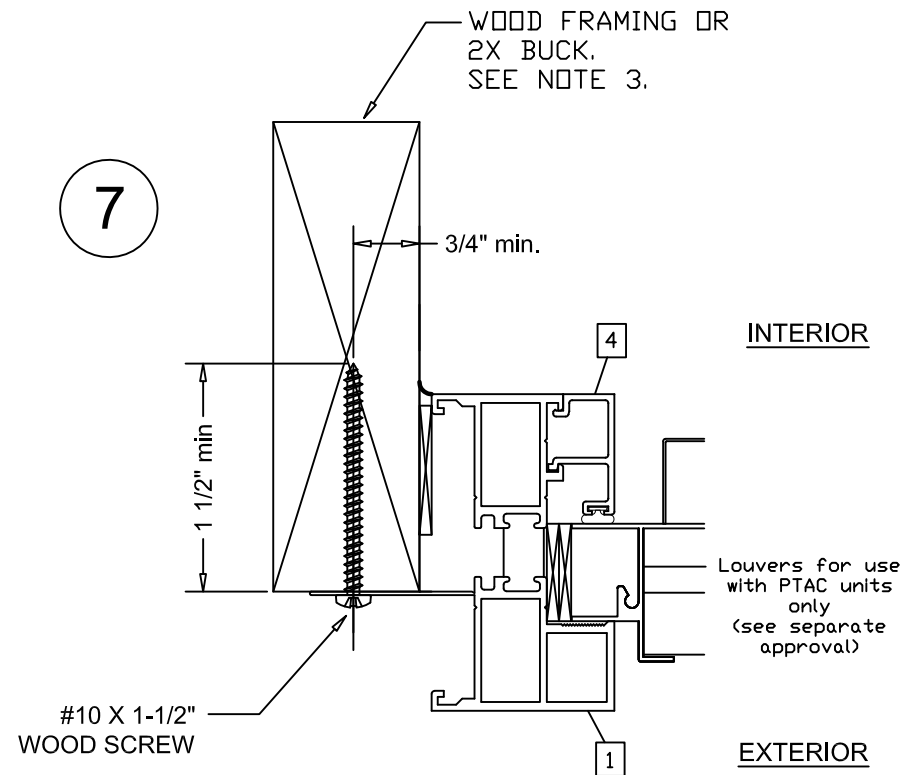


NOTE: NOT APPROVED FOR ANCHORAGE DIRECTLY TO CONCRETE OR CONCRETE MASONRY.
 2X BUCK (BY OTHERS) REQUIRED FOR CONCRETE OR CONCRETE MASONRY WALL CONSTRUCTION.



7/27/2023
 LUCAS A. TURNER, P.E.
 FL PE # 58201
 TURNER ENGINEERING & CONSULTING, INC.
 2428 OLD NATCHEZ TRC TRL
 CAMDEN, TN 38320
 PH. 941-380-1574

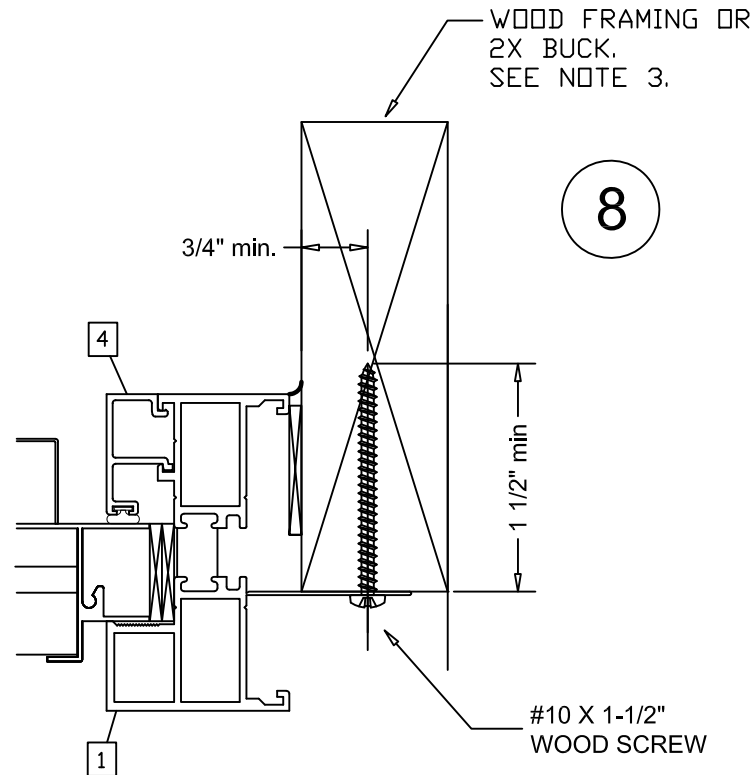
7



INTERIOR

EXTERIOR

8

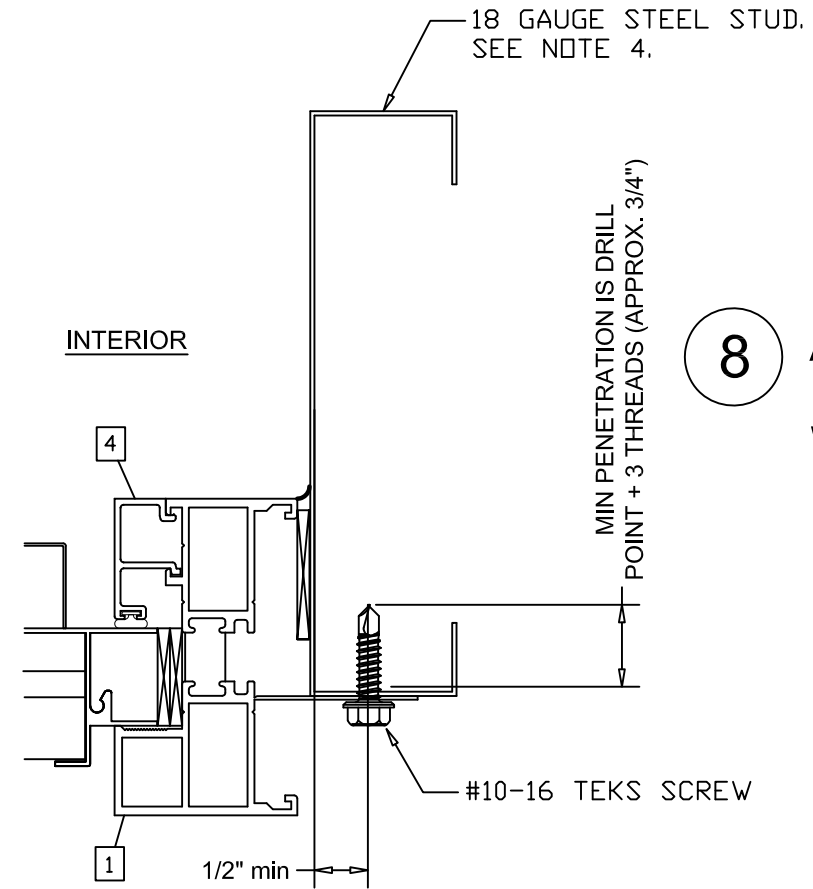


INTERIOR

EXTERIOR

8

ALTERNATE STEEL FRAMING WINDOW JAMB SIMILAR



Project Name:

M700 FIXED-FIXED OVER LOUVER IMPACT INSTALLATION INSTRUCTIONS

DETAILS

Description:

PHONE (573)-744-5211
 FAX (573)-744-5586
 COMMERCIAL
 FAX (573)-744-5822
 www.quakerwindows.com



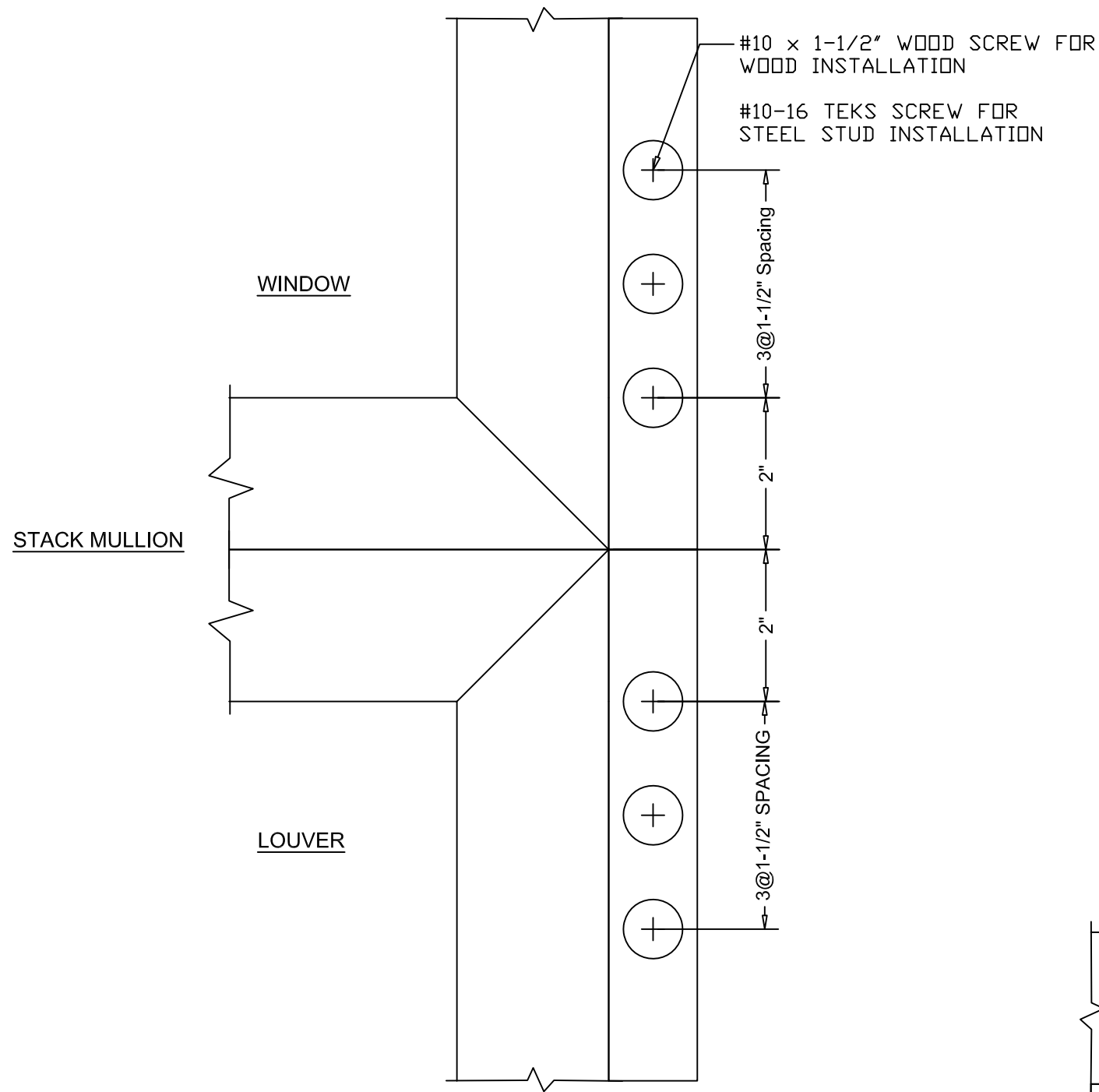
Drawn By: ---
 Date: 07-27-23

QUAKER WINDOW PRODUCTS WILL NOT BE RESPONSIBLE FOR FIELD MEASUREMENT, QUANTITIES, & INSTALLATION DESIGN. CONTRACTOR MUST VERIFY ALL DIMENSIONS.

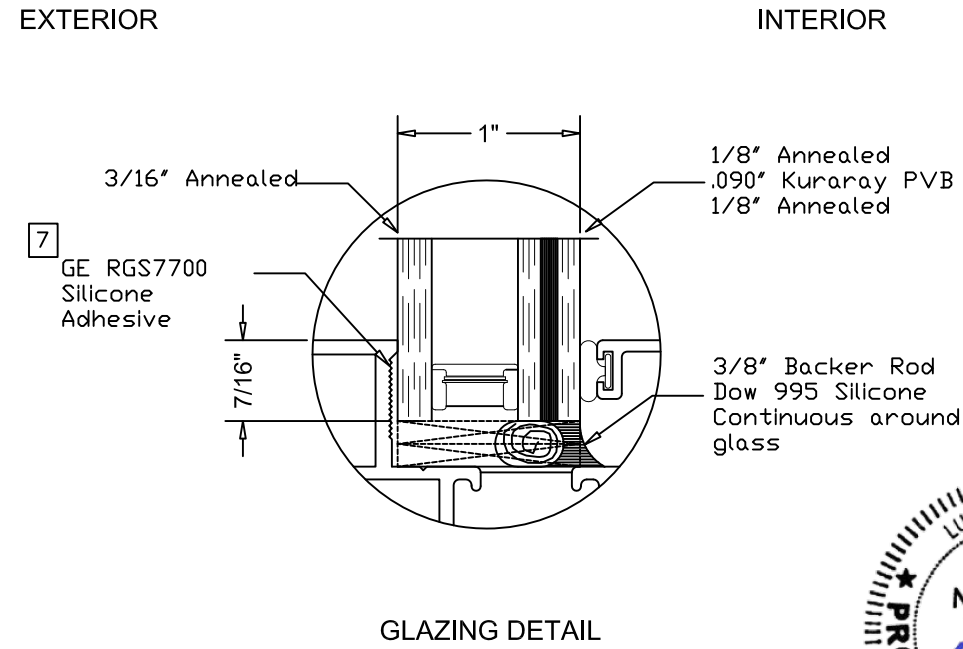
Scale: NONE
 Sheet #: 4 of 6

504 Highway 63 South
 Freeburg, MO 65035
 drafting@quakerwindows.com

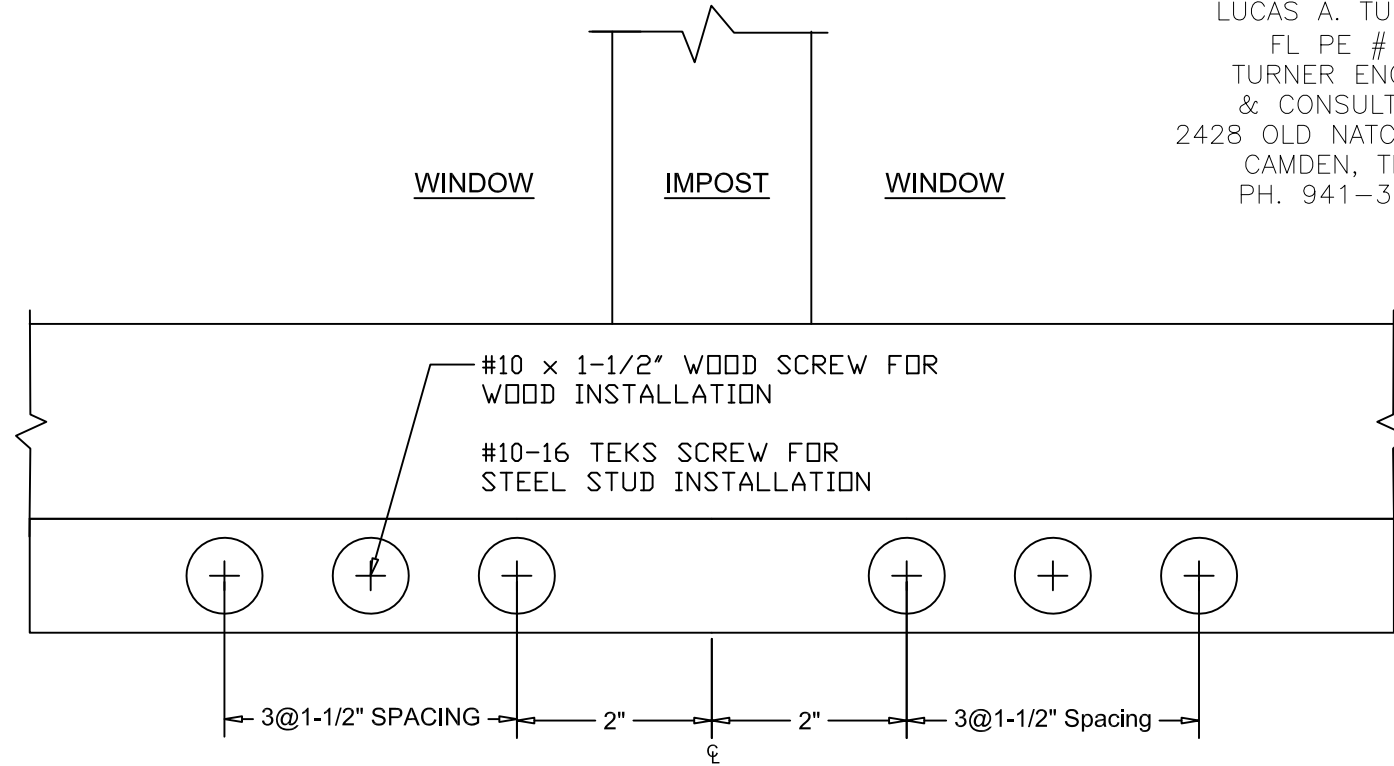
Drawing: FPA-M700-FX-LOUV



ADDITIONAL ANCHORS AT END OF HORIZONTAL MULLION (EACH END)



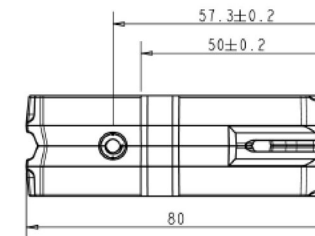
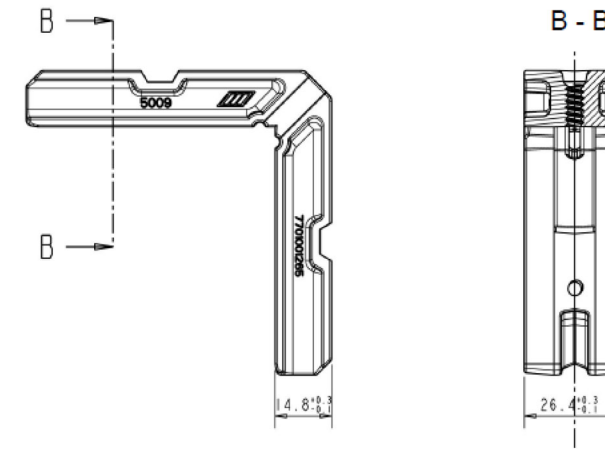
7/27/2023
 LUCAS A. TURNER, P.E.
 FL PE # 58201
 TURNER ENGINEERING & CONSULTING, INC.
 2428 OLD NATCHEZ TRC TRL
 CAMDEN, TN 38320
 PH. 941-380-1574



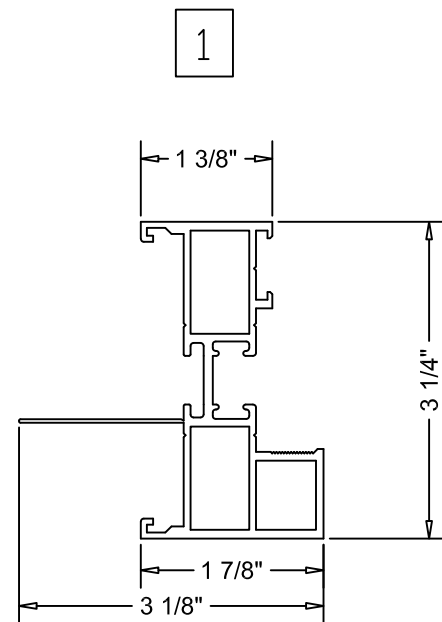
ADDITIONAL ANCHORS AT ENDS OF VERTICAL MULLIONS (AT HEAD AND SILL OF FIXED/FIXED ASSEMBLIES, AND AT HEAD OF FIXED/FIXED/LOUVER ASSEMBLIES)

QUAKER COMMERCIAL WINDOW AND DOOR 504 Highway 63 South Freeburg, MO 65035 drafting@quakerwindows.com		PHONE (573)-744-5211 FAX (573)-744-5586 COMMERCIAL FAX (573)-744-5822 www.quakerwindows.com	Scale: NONE Sheet #: 5 of 6
Drawn By: --- Date: 07-27-23	Description: QUAKER WINDOW PRODUCTS WILL NOT BE RESPONSIBLE FOR FIELD MEASUREMENT QUANTITIES, & INSTALLATION DESIGN. CONTRACTOR MUST VERIFY ALL DIMENSIONS.	Project Name: M700 FIXED-FIXED OVER LOUVER IMPACT INSTALLATION INSTRUCTIONS	Drawing: FPA-M700-FX-LOUV

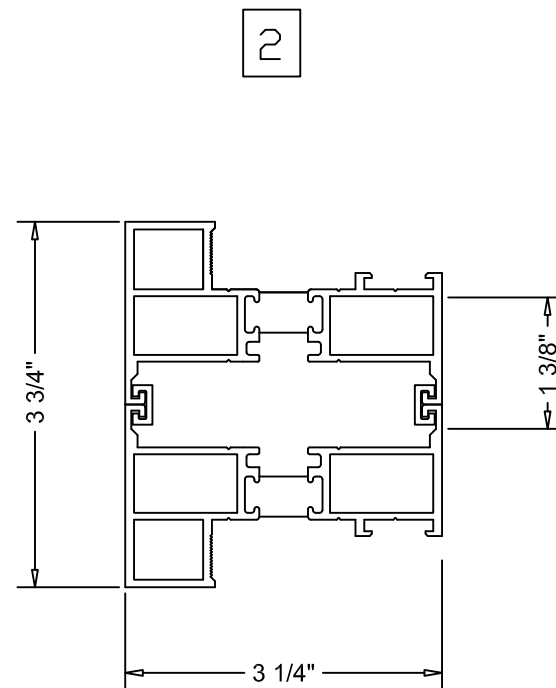
Bill of Materials				
Item	Description	Part No.	Material	Manufacturer
1	Fixed Window Frame	M52730	Alum. 6063-T6	Quaker
2	Horizontal C-Mullion	M52731 / 22185	Alum. 6063-T6	Quaker
3	Vertical Impost	M21215	Alum. 6063-T6	Quaker
4	Glazing Stop	M21195	Alum. 6063-T6	Quaker
5	Corner Key	5009 / 200	Die Cast Alum.	Monticelli
6	Corner Sealant	896TB	Silicone	Pecora
7	Backbedding	RGS7700	Silicone	GE
8	Structural Sealant	Dow Corning 995	Silicone	Dow Corning



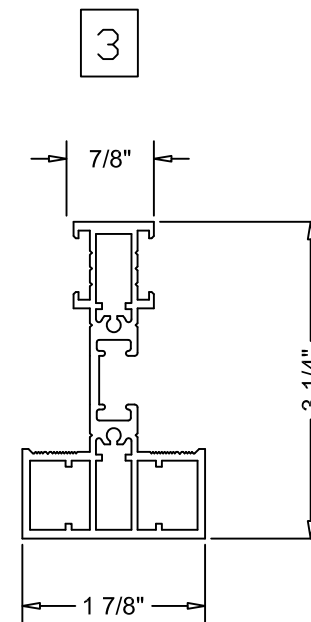
Corner Key
(Cast Aluminum)
(Metric Dimensions, Not to Scale)



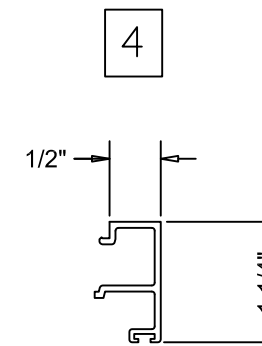
Fixed Frame
(6063-T6)



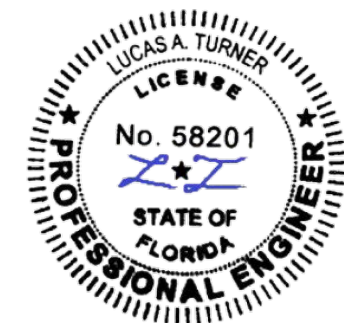
Horizontal
C-Mullion Assembly
(6063-T6)



Vertical
Impost
(6063-T6)



Glazing
Bead
(6063-T6)



7/27/2023
LUCAS A. TURNER, P.E.
FL PE # 58201
TURNER ENGINEERING
& CONSULTING, INC.
2428 OLD NATCHEZ TRC TRL
CAMDEN, TN 38320
PH. 941-380-1574

Project Name:		M700 FIXED-FIXED OVER LOUVER IMPACT INSTALLATION INSTRUCTIONS	
Description:		BOM AND COMPONENTS	
Description:		QUAKER WINDOW PRODUCTS WILL NOT BE RESPONSIBLE FOR FIELD MEASUREMENT QUANTITIES, & INSTALLATION DESIGN. CONTRACTOR MUST VERIFY ALL DIMENSIONS.	
PHONE (573)-744-5211 FAX (573)-744-5586 COMMERCIAL FAX (573)-744-5822 www.quakerwindows.com	Scale:	NONE	Sheet #:
504 Highway 63 South Freeburg, MO 65035 drafting@quakerwindows.com	Drawn By:	---	07-27-23
Drawing:		FPA-M700-FX-LOUV	