

RENAISSANCE WINDOWS AND DOORS

SERIES 8500 VINYL SINGLE HUNG WINDOW

INSTALLATION ANCHORAGE DETAILS

GENERAL NOTES:

1. THIS PRODUCT HAS BEEN TESTED, EVALUATED AND DESIGNED TO THE CURRENT EDITION OF THE FLORIDA BUILDING CODE. TESTING WAS CONDUCTED IN ACCORDANCE WITH AAMA/WDMA/CSA 101/I.S.2/A440-08 AND 11.
2. THE PRODUCT DETAILS CONTAINED HEREIN ARE BASED UPON SIGNED AND SEALED TEST REPORT NO. NCTL-210-4105-02 AND ASSOCIATED LABORATORY DRAWINGS BY NATIONAL CERTIFIED TESTING LABORATORIES.
3. THIS PRODUCT EVALUATION DOCUMENT IS NOT FOR USE IN THE HIGH VELOCITY HURRICANE ZONE (HVHZ).
4. ADEQUACY OF THE EXISTING STRUCTURAL CONCRETE / MASONRY AND 2X FRAMING FRAMING SUBSTRATES AS A MAIN WIND FORCE RESISTING SYSTEM CAPABLE OF WITHSTANDING AND TRANSFERRING APPLIED PRODUCT LOADS TO THE FOUNDATION IS THE RESPONSIBILITY OF THE LICENSED PROFESSIONAL ENGINEER OR REGISTERED ARCHITECT ACTING AS THE DESIGN PROFESSIONAL OF RECORD FOR THE PROJECT OF INSTALLATION.
5. 1X AND 2X BUCKS (WHEN USED) SHALL BE DESIGNED AND ANCHORED TO PROPERLY TRANSFER ALL LOADS TO THE STRUCTURE. BUCK DESIGN AND INSTALLATION IS THE RESPONSIBILITY OF THE LICENSED PROFESSIONAL ENGINEER OR REGISTERED ARCHITECT ACTING AS THE DESIGN PROFESSIONAL OF RECORD FOR THE PROJECT OF INSTALLATION.
6. WHEN INSTALLED IN LOCATIONS WHERE WINDBORNE DEBRIS PROTECTION REQUIREMENTS EXIST,THIS PRODUCT REQUIRES OPENING PROTECTION IN ACCORDANCE WITH THE CURRENT EDITION OF THE FLORIDA BUILDING CODE USING AN APPROVED IMPACT PROTECTION DEVICE.
7. SITE CONDITIONS NOT COVERED IN THIS PRODUCT EVALUATION DOCUMENT ARE SUBJECT TO ADDITIONAL ENGINEERING ANALYSIS BY A LICENSED PROFESSIONAL ENGINEER OR REGISTERED ARCHITECT AS REQUIRED BY THE AUTHORITY HAVING JURISDICTION.
8. WINDOW FRAME MATERIAL: VINYL (PVC).
9. GLASS MEETS THE REQUIREMENTS OF ASTM E1300-09a.
10. DESIGNATIONS "X" STANDS FOR OPERABLE LITE/SASH AND "O" STANDS FOR FIXED LITE.
11. THESE DRAWINGS CERTIFY THE WINDOW INSTALLATION ONLY. WATER PROOFING OF THE INSTALLED WINDOW IS NOT PART OF THIS INSTALLATION CERTIFICATION. THAT RESPONSIBILITY SHALL BE THAT OF THE MANUFACTURER AND/OR THE INSTALLER.

TABLE OF CONTENTS	
SHEET	SHEET DESCRIPTION
1	GENERAL NOTES, INSTALLATION NOTES, TABLE OF CONTENTS
2	ANCHOR SCHEDULE - EMBEDMENT AND EDGE DISTANCE
3	53" x 63" WINDOW ELEVATION/NAILING FIN (FIN FRAME) ANCHORING LAYOUT
4	53" x 63" WINDOW ELEVATION/THROUGH FRAME ANCHORING LAYOUT
5	NAILING FIN (FIN FRAME) INSTALLATION
6	THROUGH FRAME INSTALLATION W/ FLANGE
7	THROUGH FRAME INSTALLATION
8	GLAZING DETAILS AND BILL OF MATERIALS (BOM)

INSTALLATION NOTES:

1. PRODUCT ANCHORS SHALL BE AS DESIGNATED AND LOCATED AS SHOWN IN THIS PRODUCT EVALUATION DOCUMENT. ANCHOR EMBEDMENT AND EDGE DISTANCE EXCLUDE WALL FINISHES, INCLUDING BUT NOT LIMITED TO STUCCO, FOAM, BRICK VENEER AND SIDING.
2. SEE INSTALLATION ANCHOR SCHEDULE ON SHEET 2 FOR TYPE AND GRADE OF ANCHOR, AND/OR MANUFACTURER'S ANCHOR SPECIFICATIONS, INCLUDING MINIMUM NOMINAL SIZE, MINIMUM EMBEDMENT INTO SUBSTRATE AND MINIMUM EDGE DISTANCES.

2.1. EDGE DISTANCES SHALL BE MEASURED FROM CENTERLINE OF ANCHOR TO EDGE OF STRUCTURAL SUBSTRATE EITHER TO THE INTERIOR OR EXTERIOR OF THE FENESTRATION PRODUCT.

2.2. MINIMUM EMBEDMENT SHALL BE BASED ON PENETRATION INTO MAIN WIND FORCE RESISTING SYSTEM SUBSTRATE.
3. SEE SHEETS 5 THROUGH 7 FOR SPECIFIC ANCHOR INSTALLATION DETAILS.
4. ONE (1) INSTALLATION ANCHOR IS REQUIRED AT EACH ANCHOR LOCATION SHOWN.
5. ANCHOR QUANTITIES AND SPACING / EMBEDMENT AND EDGE DISTANCE

5.1. THE NUMBER OF INSTALLATION ANCHORS IS BASED ON THE MAXIMUM END DISTANCE (ED) AND THE MAXIMUM ON CENTER (O.C.) SPACING PLACEMENT OF ANCHORS IN ACCORDANCE WITH ELEVATIONS ON SHEETS 3 AND 4.

5.2. END DISTANCES AND O.C. SPACINGS LESS THAN THAT SHOWN IN THE ELEVATIONS ON SHEETS 3 AND 4 ARE ACCEPTABLE.

5.3. FOR WINDOW SIZES SMALLER THAN THOSE SHOWN, ANCHOR QUANTITIES CAN BE REDUCED WHILE MAINTAINING EDGE DISTANCE AND O.C. SPACING REQUIREMENTS.

5.4. ANCHOR QUANTITIES AND SPACINGS SHOWN ARE BASED ON THE LOWER OF ANCHOR SPACING USED IN TESTING OR REQUIRED BY LOADING AT DESIGN PRESSURE.

5.5. SEE EMBEDMENT AND EDGE DISTANCE DESCRIPTION ON SHEET 2.
6. MAXIMUM ALLOWABLE SHIM THICKNESS IS 1/4 INCH. SHIM WHERE SPACE OF 1/16 INCH OR GREATER OCCURS. SHIM(S) SHALL BE CONSTRUCTED OF WOOD COMPOSITE, HIGH DENSITY PLASTIC OR SIMILAR LOAD BEARING MATERIAL.
7. FOR CONCRETE BLOCK APPLICATIONS DO NOT INSTALL INSTALLATION ANCHORS INTO MORTAR JOINTS.
8. INSTALLATION ANCHORS SHALL BE INSTALLED IN ACCORDANCE WITH ANCHOR MANUFACTURER'S INSTALLATION INSTRUCTIONS AND ANCHORS SHALL NOT BE USED IN SUBSTRATES WITH STRENGTHS LESS THAN THE MINIMUM STRENGTH SPECIFIED IN THE INSTALLATION ANCHOR SCHEDULE ON SHEET 2.

PERFORMANCE RATING			
MAXIMUM WINDOW SIZE	GLAZING DETAIL (SEE SHEET 8)	DESIGN PRESSURE (PSF)	IMPACT RATING
NOMINAL 53" x 63"	A	+/- 35	NONE SEE NOTE 6

PROJECT # 419-0901

RENAISSANCE WINDOWS AND DOORS
13340 INTERNATIONAL PARKWAY
JACKSONVILLE, FL 32218

TITLE:
SERIES 8500 VINYL SINGLE HUNG WINDOW
GENERAL NOTES, INSTALLATION NOTES & TABLE OF CONTENTS

PREPARED BY:
DRAWN BY: RJA
SCALE: N.T.S.
REV: First Issue

DATE: 12/11/19
DRAWING NO: RWD0015
SHEET: 1 OF 8

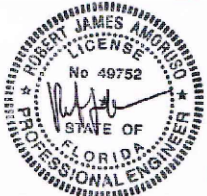
REV

DESCRIPTION

DATE

BY

Robert J. Amoruso, P.E.
Florida P.E. No. 49752



Digitally
signed by
Robert J
Amoruso
Date:
2019.12.11
15:18:53
-05'00'

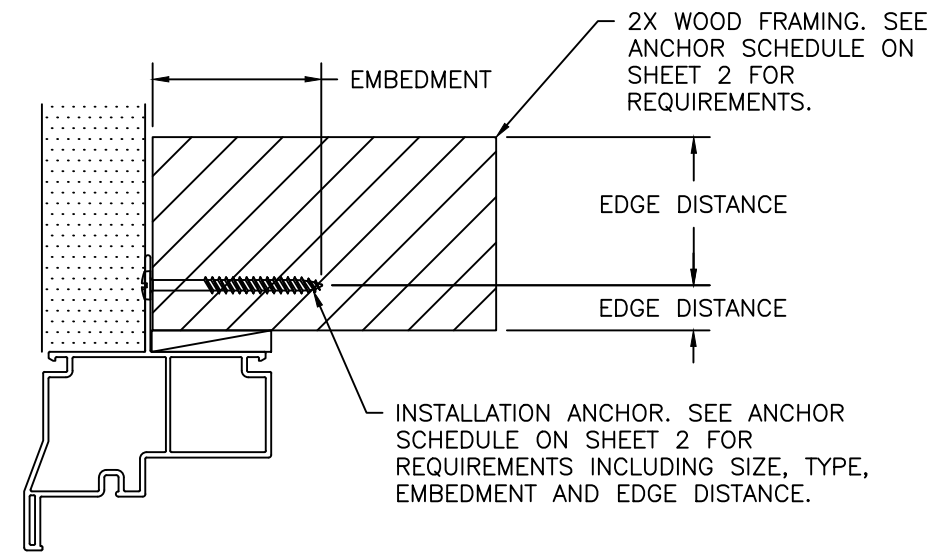
INSTALLATION ANCHOR SCHEDULE									
INSTALLATION TYPE	SECTION VIEW	FASTENER HEAD TYPE	FASTENER SIZE	SUBSTRATE	MANUFACTURER AND/OR SPECIFICATION	MIN. EMBEDMENT (IN)	MIN. EDGE DISTANCE (IN)	MIN. SPACING (IN) BETWEEN FRAME ANCHORS	ANCHOR CAPACITIES BASED ON
THROUGH FRAME ANCHOR	SECTION A, B & C (SHEETS 7)	HEX HEAD	3/16"	CONCRETE	ITW TAPCONS (1)	1	1-1/8	3	MIN. 2500 PSI CONCRETE
				MASONRY (BLOCK/CMU)	ITW TAPCONS (1)	1	2	3	STRENGTH CONFORMANCE TO ASTM C-90, MEDIUM WEIGHT
		PAN HEAD	No. 10	WOOD	ANSI B18.6.1 (WOOD SCREW) (2) GRADE 2 EQUIVALENT	1-3/8	3/4	2 1/2	WOOD WITH A MINIMUM SPECIFIC GRAVITY OF 0.42.
					ASME B18.6.4 (TAPPING SCREW) (2) GRADE 2 EQUIVALENT				
SNAP-ON FLANGE WITH THROUGH FRAME ANCHOR	SECTION A, B & C (SHEETS 6)	HEX HEAD	3/16"	CONCRETE	ITW TAPCONS (1)	1	1-1/8	3	MIN. 2500 PSI CONCRETE
				MASONRY (BLOCK/CMU)	ITW TAPCONS (1)	1	2	3	STRENGTH CONFORMANCE TO ASTM C-90, MEDIUM WEIGHT
		PAN HEAD	No. 10	WOOD	ANSI B18.6.1 (WOOD SCREW) (2) GRADE 2 EQUIVALENT	1-3/8	3/4	2 1/2	WOOD WITH A MINIMUM SPECIFIC GRAVITY OF 0.42.
					ASME B18.6.4 (TAPPING SCREW) (2) GRADE 2 EQUIVALENT				
NAILING FIN ANCHOR	SECTION A, B & C (SHEETS 5)	PAN HEAD	No. 8	WOOD	ANSI B18.6.1 (WOOD SCREW) (3) GRADE 2 EQUIVALENT	1-5/8	1/4	1	WOOD WITH A MINIMUM SPECIFIC GRAVITY OF 0.42.
					ASME B18.6.4 (TAPPING SCREW) (3) GRADE 2 EQUIVALENT				

NOTES:

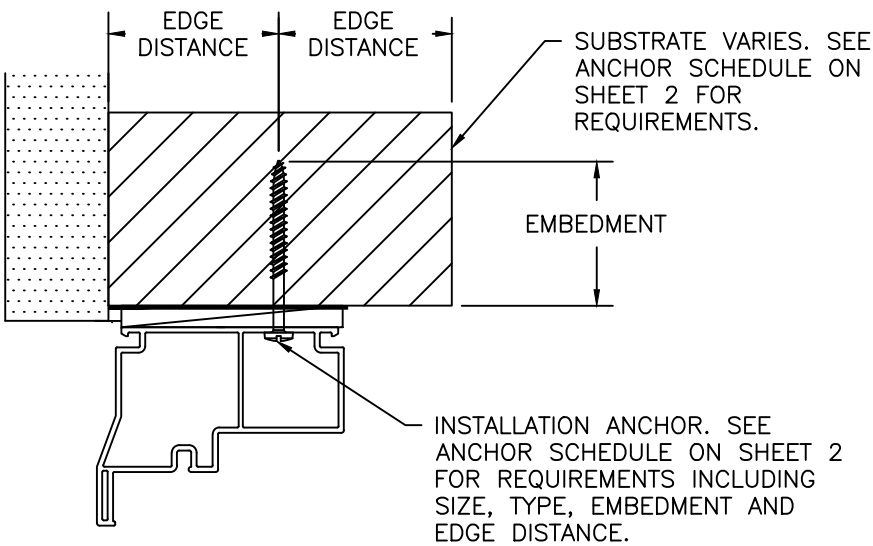
1) WHEN ITW TAPCONS ARE USED FOR CONCRETE/MASONRY INSTALLATION, THEY SHALL BE THE ADVANCED THREADFORM TECHNOLOGY TYPE.

2) FOR WOOD SCREW INSTALLATION INTO WOOD SUBSTRATE; IF SPLITTING IS A CONCERN, DRILL 0.090" PILOT HOLE (DRILL SIZE 43). FOR TAPPING SCREW INSTALLATION INTO WOOD SUBSTRATE; IF SPLITTING IS A CONCERN, DRILL 0.121" PILOT HOLE (DRILL SIZE 31).

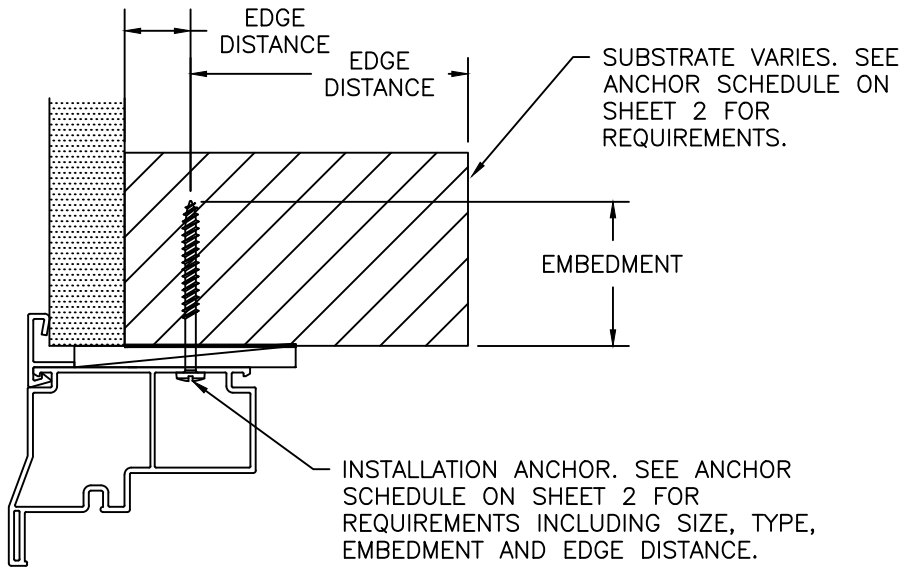
3) FOR WOOD OR TAPPING SCREW INSTALLATION INTO WOOD SUBSTRATE; IF SPLITTING IS A CONCERN, DRILL 0.082" PILOT HOLE (DRILL SIZE 45).



EMBEDMENT AND EDGE DISTANCE
NAILING FIN FRAME INSTALLATION



EMBEDMENT AND EDGE DISTANCE
THROUGH-FRAME INSTALLATION



EMBEDMENT AND EDGE DISTANCE
SNAP-ON FLANGE THROUGH-FRAME INSTALLATION

PROJECT # 419-0901

RENAISSANCE WINDOWS AND DOORS
13340 INTERNATIONAL PARKWAY
JACKSONVILLE, FL 32218

TITLE:
SERIES 8500 VINYL SINGLE HUNG WINDOW
ANCHOR SCHEDULE - EMBEDMENT & EDGE DISTANCE

PREPARED BY:
DRAWN BY: RJA
SCALE: N.T.S.
REV: First Issue

DATE: 12/11/19
DRAWING NO: RWD0015
SHEET: 2 OF 8

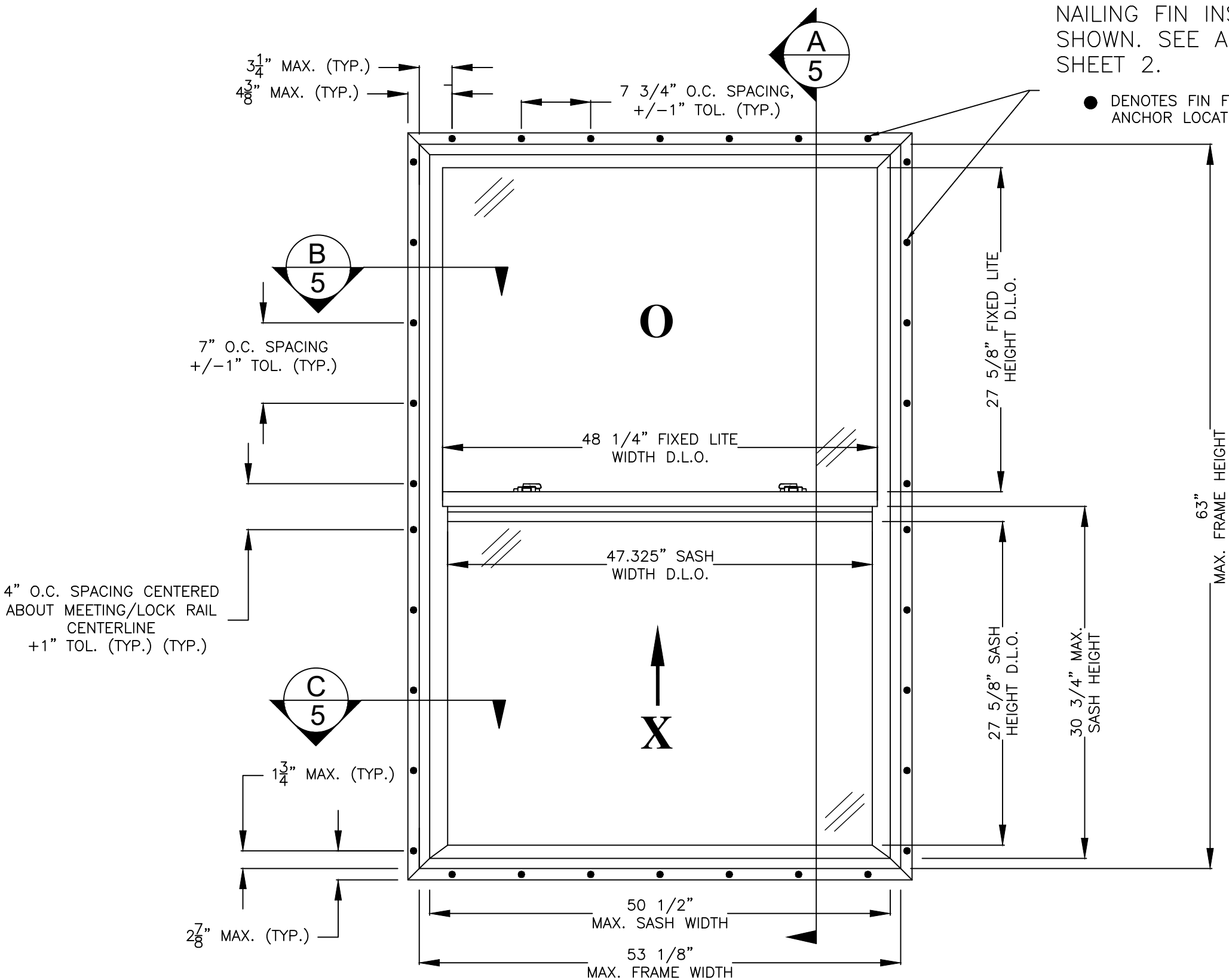
DESCRIPTION
REV
DATE
BY

Robert J. Amoruso, P.E.
Florida P.E. No. 49752

Digitally signed by Robert J Amoruso
Date: 2019.12.11 15:18:53 -05'00'

NAILING FIN INSTALLATION ANCHOR
SHOWN. SEE ANCHOR SCHEDULE ON
SHEET 2.

● DENOTES FIN FRAME
ANCHOR LOCATION



SERIES 8500 VINYL SINGLE HUNG WINDOW - 35 PSF DESIGN PRESSURE

EXTERIOR VIEW

53" X 63" NOMINAL SIZE - GLAZING DETAIL A
NAILING FINE (FIN FRAME) ANCHOR INSTALLATION

PROJECT # 419-0901

RENAISSANCE WINDOWS AND DOORS
13340 INTERNATIONAL PARKWAY
JACKSONVILLE, FL 32218

TITLE: SERIES 8500 VINYL SINGLE HUNG WINDOW
53" x 63" WINDOW ELEVATION/NAILING FIN (FIN FRAME) ANCHORING LAYOUT

PREPARED BY: RJA DATE: 12/11/19
SCALE: N.T.S. DRAWING NO: RWD0015

REV: First Issue SHEET: 3 OF 8

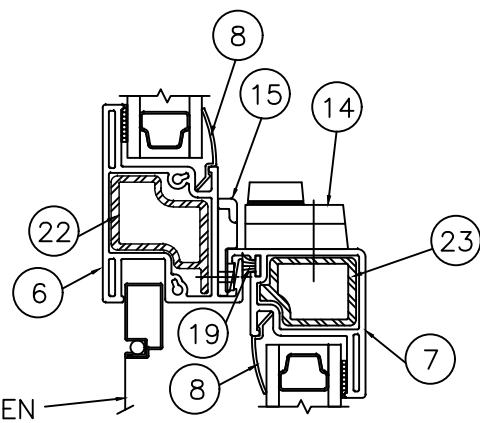
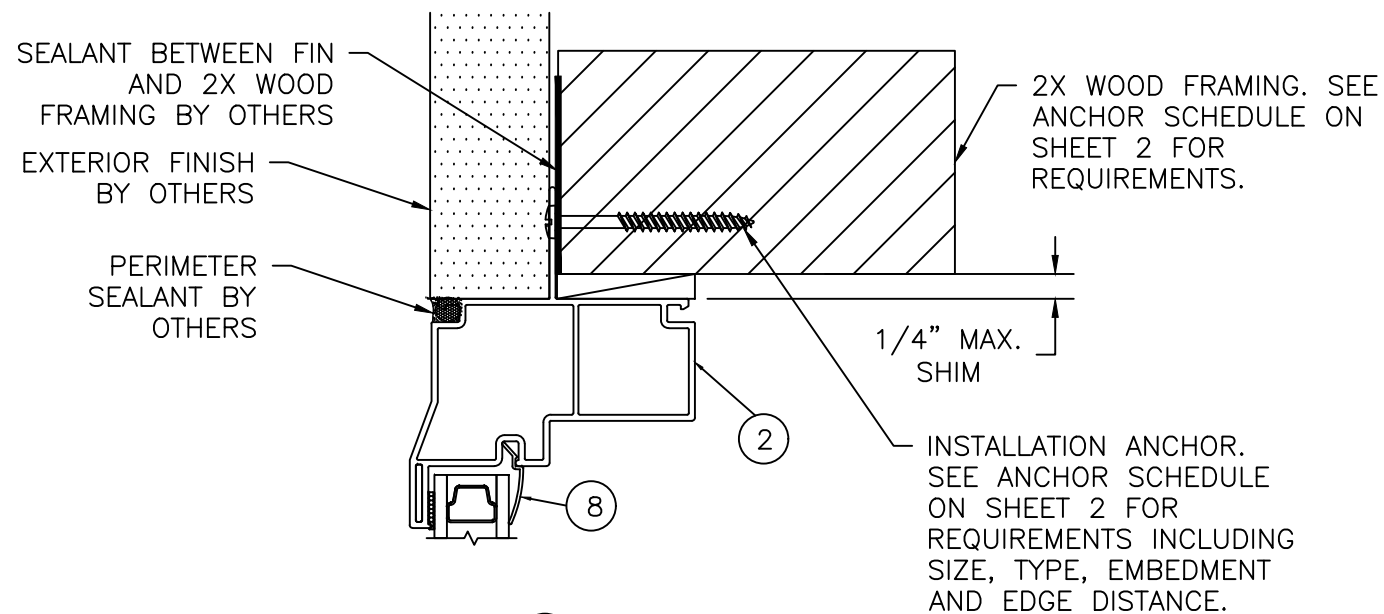
PTC PRODUCT DESIGN GROUP, LLC Phone: 321.690.1788
LONGWOOD, FLORIDA 32752 Fax: 321.690.1789
PDP@PTC-CORP.COM Email: info@ptc-corp.com

Robert J. Amoruso, P.E.
Florida P.E. No. 49752



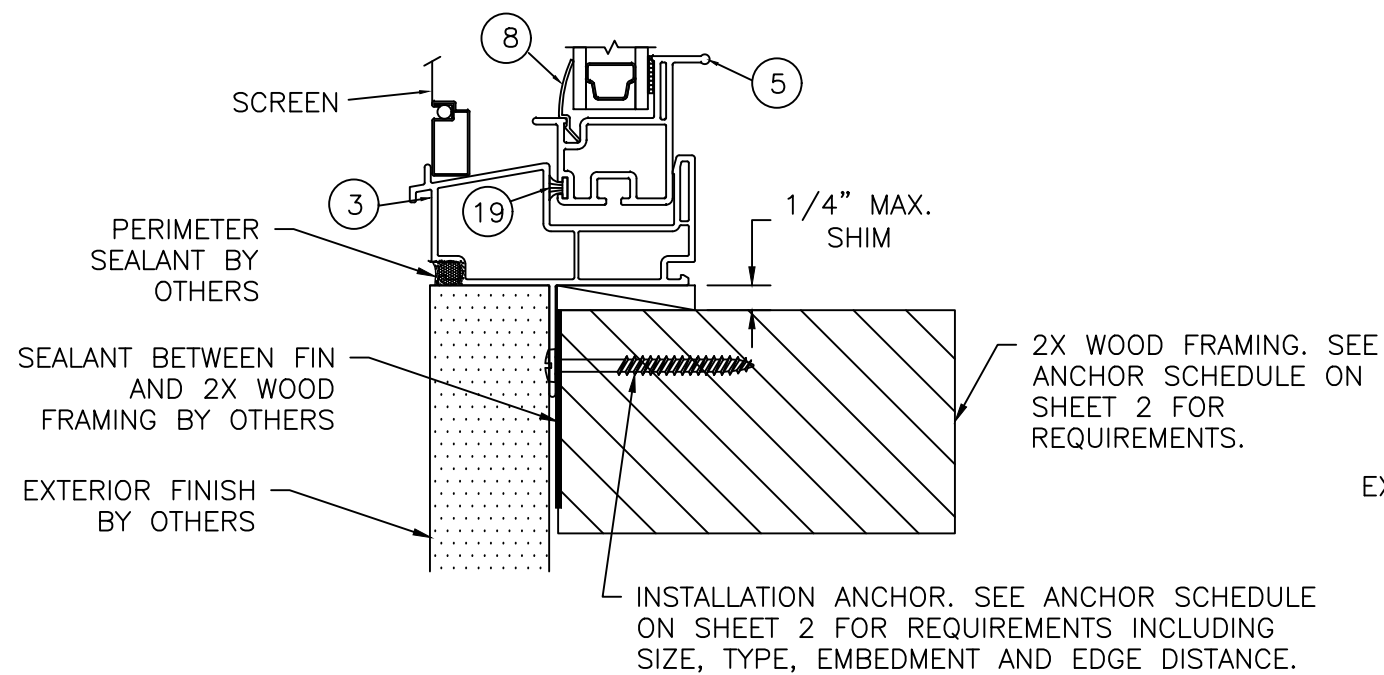
Digitally
signed by
Robert J
Amoruso
Date:
2019.12.11
15:18:53
-05'00'

Phone: 321.690.1788
 Fax: 321.690.1789
 PO BOX 520775
 LONGWOOD, FLORIDA 32752

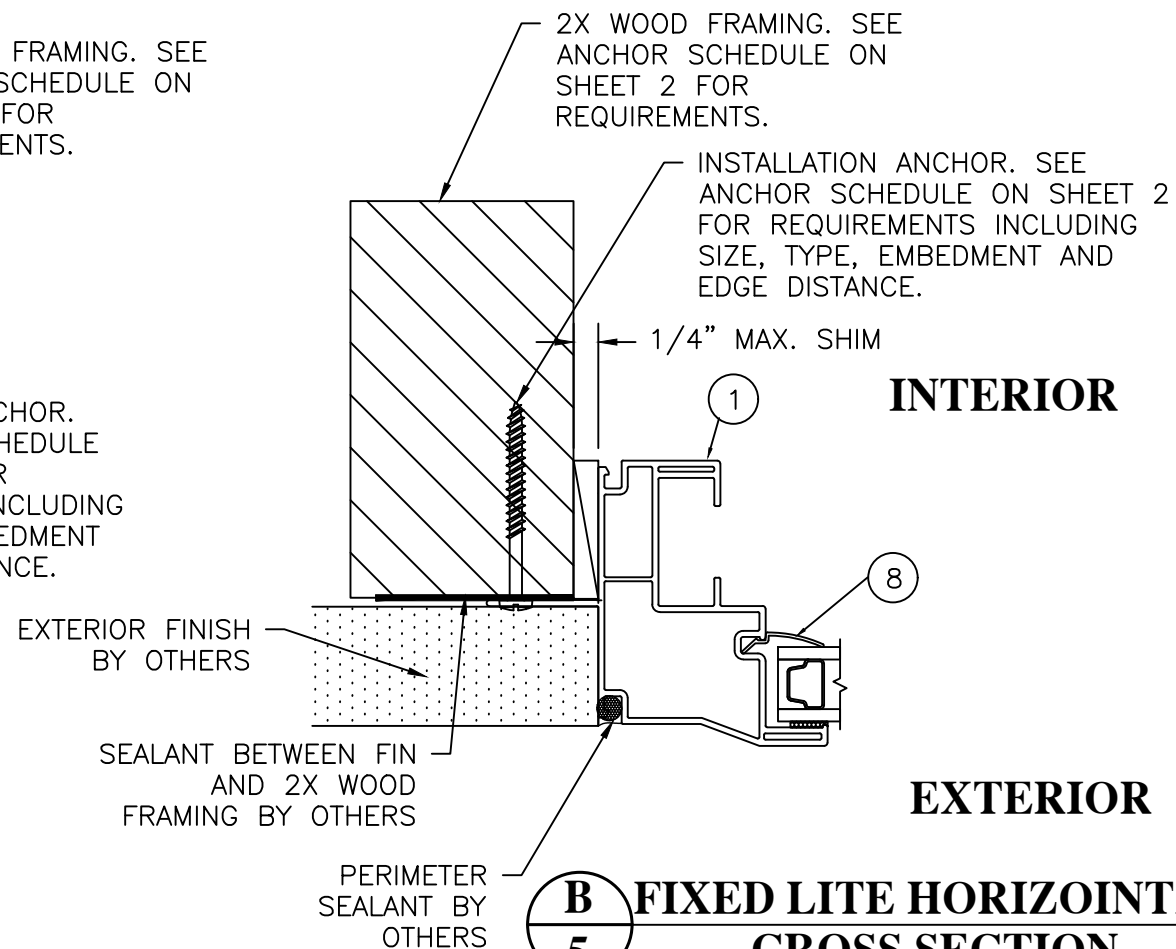


EXTERIOR

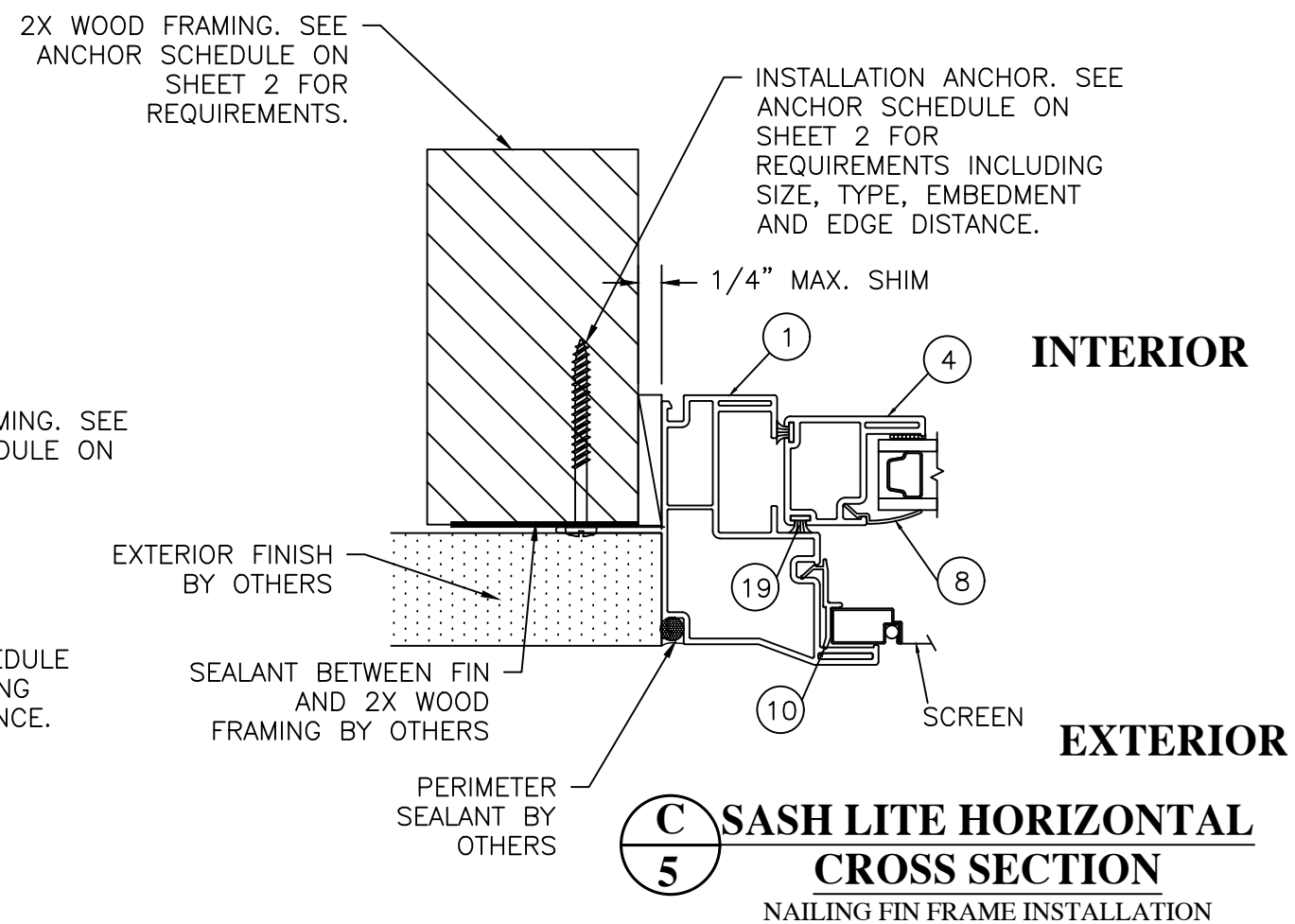
INTERIOR



A
5 **VERTICAL CROSS SECTION**
NAILING FIN FRAME INSTALLATION



B
5 **FIXED LITE HORIZONTAL CROSS SECTION**
NAILING FIN FRAME INSTALLATION



C
5 **SASH LITE HORIZONTAL CROSS SECTION**
NAILING FIN FRAME INSTALLATION

PROJECT # 419-0901

RENAISSANCE WINDOWS AND DOORS
13340 INTERNATIONAL PARKWAY
JACKSONVILLE, FL 32218

TITLE: SERIES 8500 VINYL SINGLE HUNG WINDOW
NAILING FIN (FIN FRAME) INSTALLATION

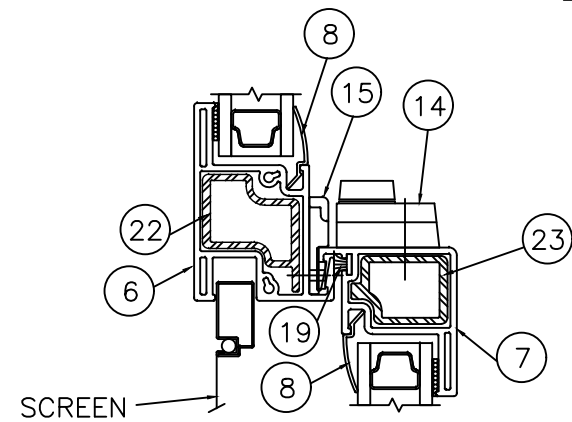
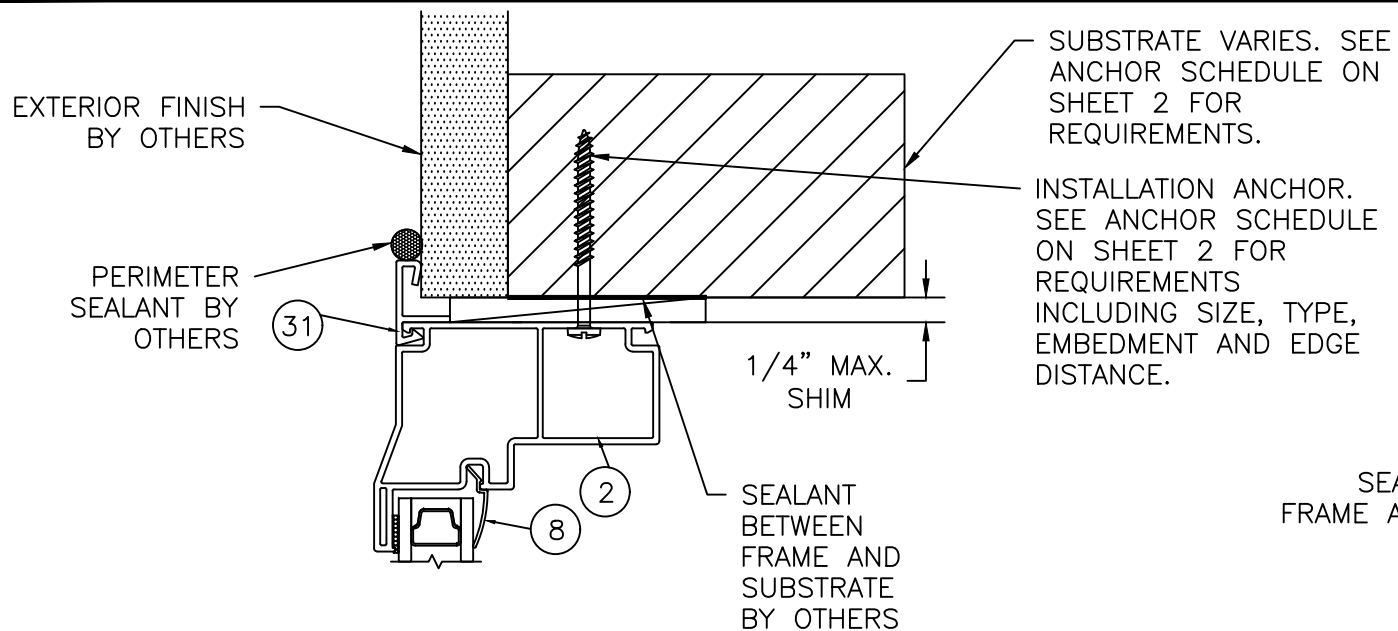
PREPARED BY: RJA
DATE: 12/11/19
SCALE: N.T.S.
DRAWING NO: RWD0015
REV: First Issue
SHEET: 5 OF 8

BY
DATE
DESCRIPTION
REV

Robert J. Amoruso, P.E.
Florida P.E. No. 49752

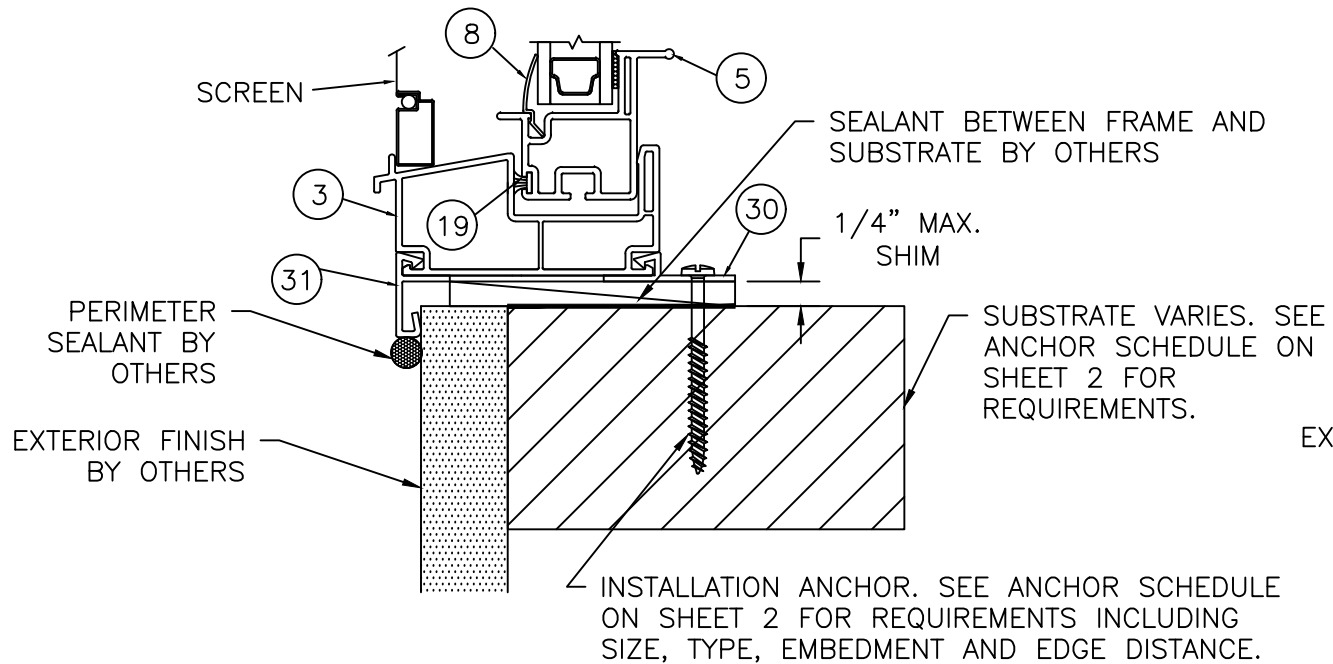


Digitally
signed by
Robert J
Amoruso
Date:
2019.12.11
15:18:53
-05'00'

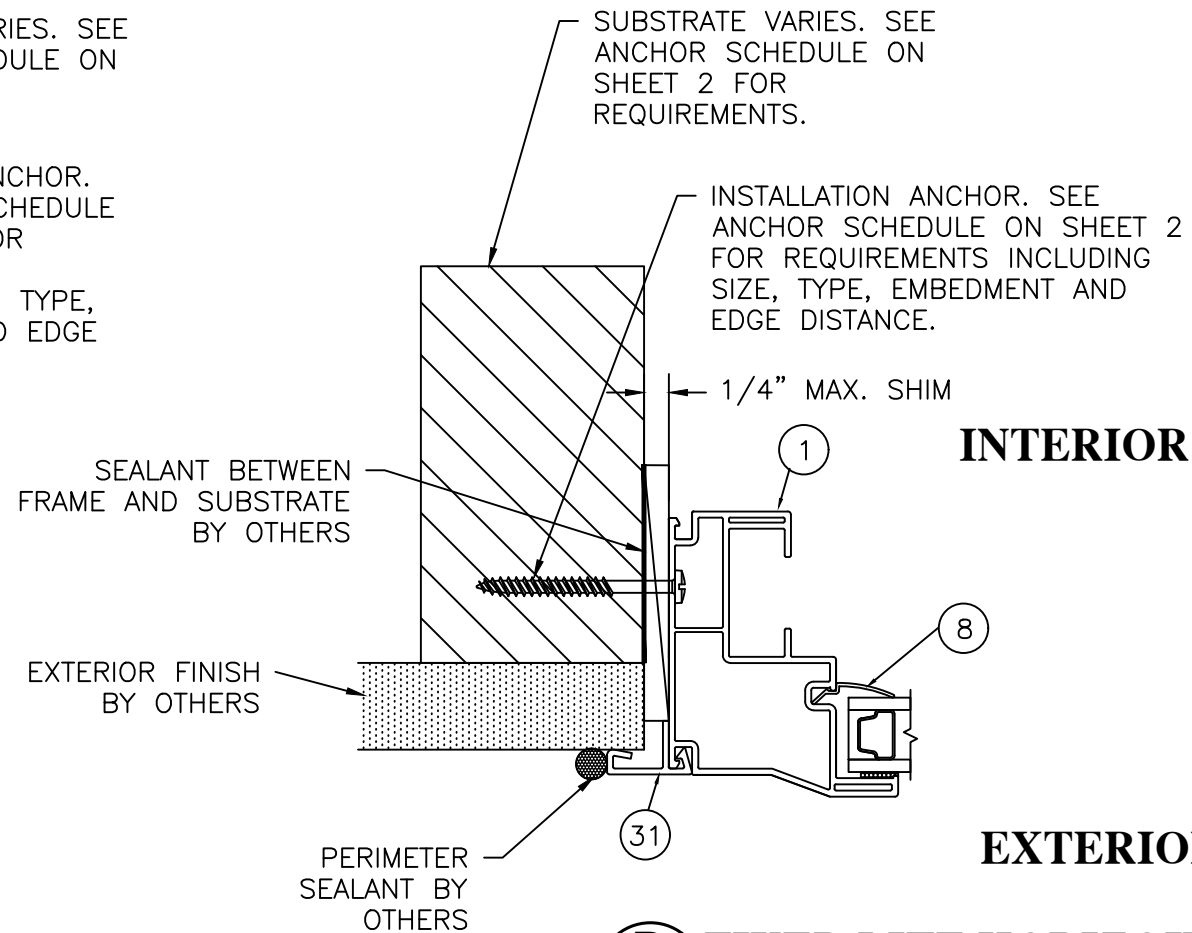


EXTERIOR

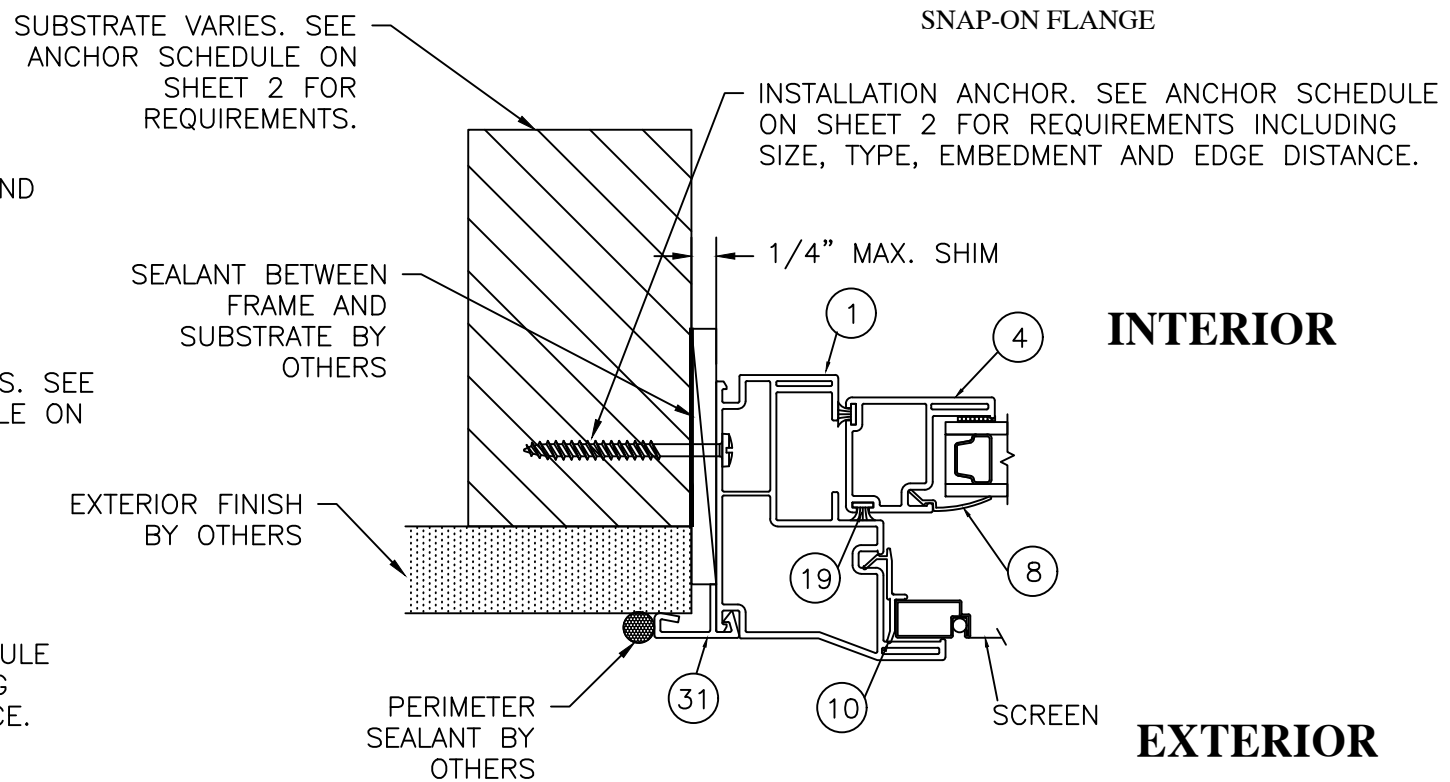
INTERIOR



A
6 **VERTICAL CROSS SECTION**
THROUGH-FRAME INSTALLATION
SNAP-ON FLANGE



B
6 **FIXED LITE HORIZONTAL CROSS SECTION**
THROUGH-FRAME INSTALLATION
SNAP-ON FLANGE



C
6 **SASH LITE HORIZONTAL CROSS SECTION**
THROUGH-FRAME INSTALLATION
SNAP-ON FLANGE

PROJECT # 419-0901

RENAISSANCE WINDOWS AND DOORS
13340 INTERNATIONAL PARKWAY
JACKSONVILLE, FL 32218

TITLE: SERIES 8500 VINYL SINGLE HUNG WINDOW
THROUGH FRAME INSTALLATION W/ FLANGE

DATE: 12/11/19

DRAWN BY: RJA

SCALE: N.T.S.

REV: First Issue

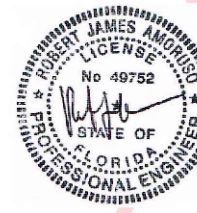
DRAWING NO: RWD0015

SHEET: 6 OF 8

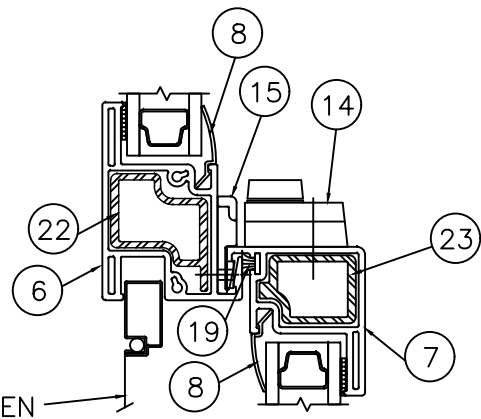
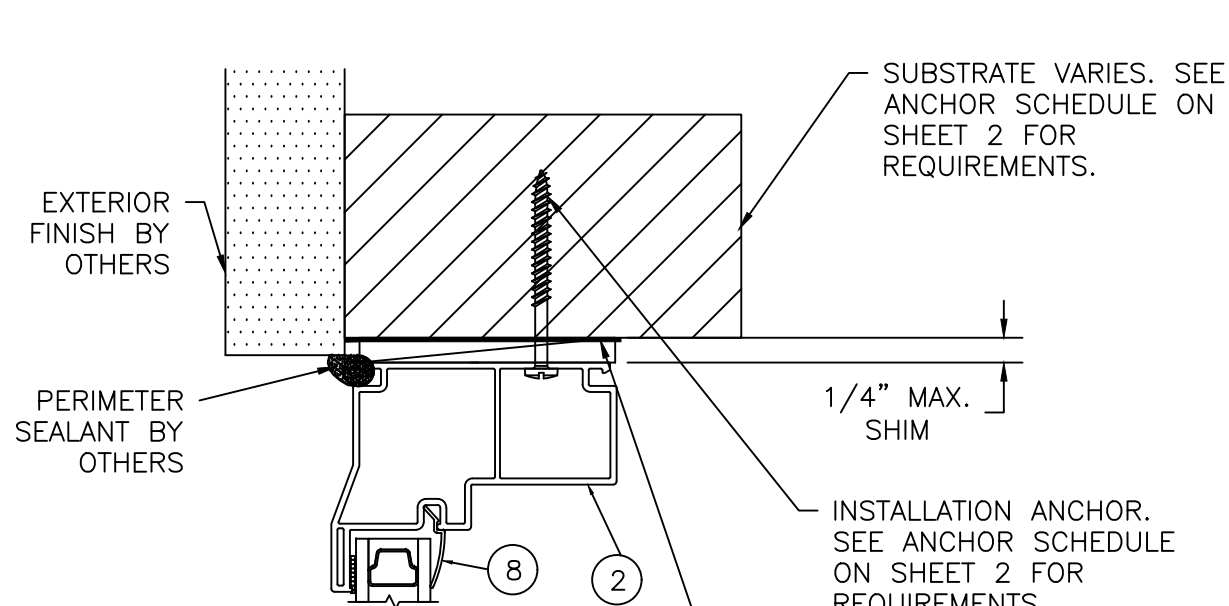
REV: First Issue

REV: First Issue

Robert J. Amoruso, P.E.
Florida P.E. No. 49752

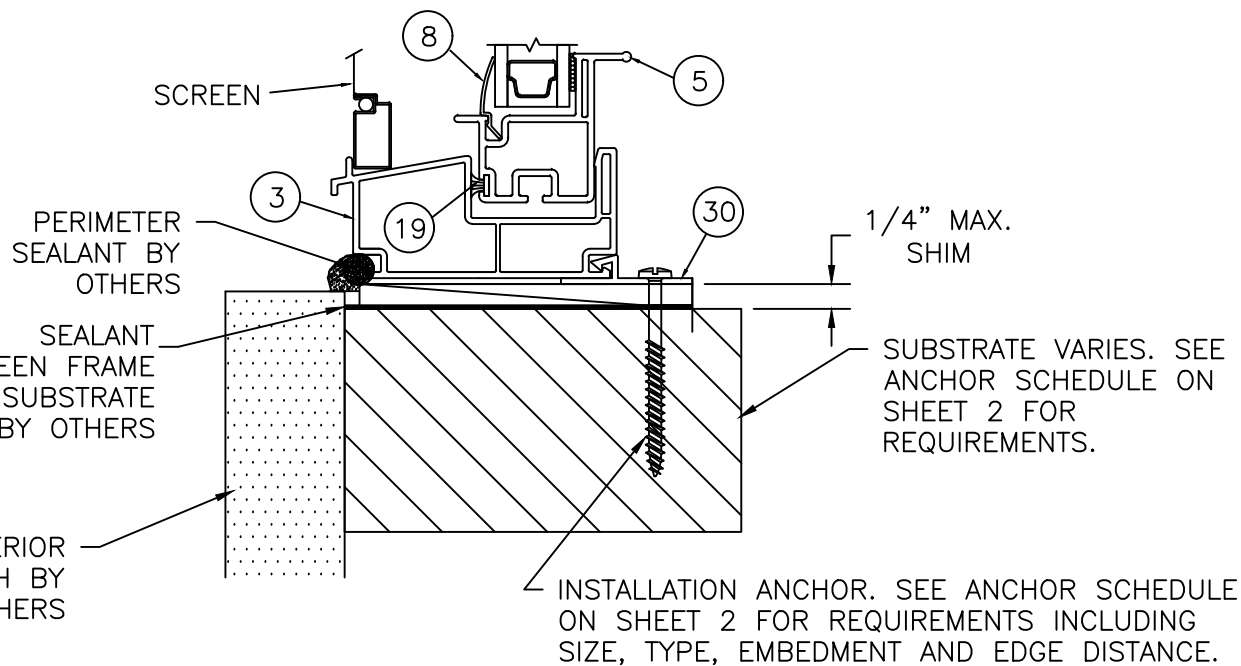


Digitally
signed by
Robert J
Amoruso
Date:
2019.12.11
15:18:53
-05'00'

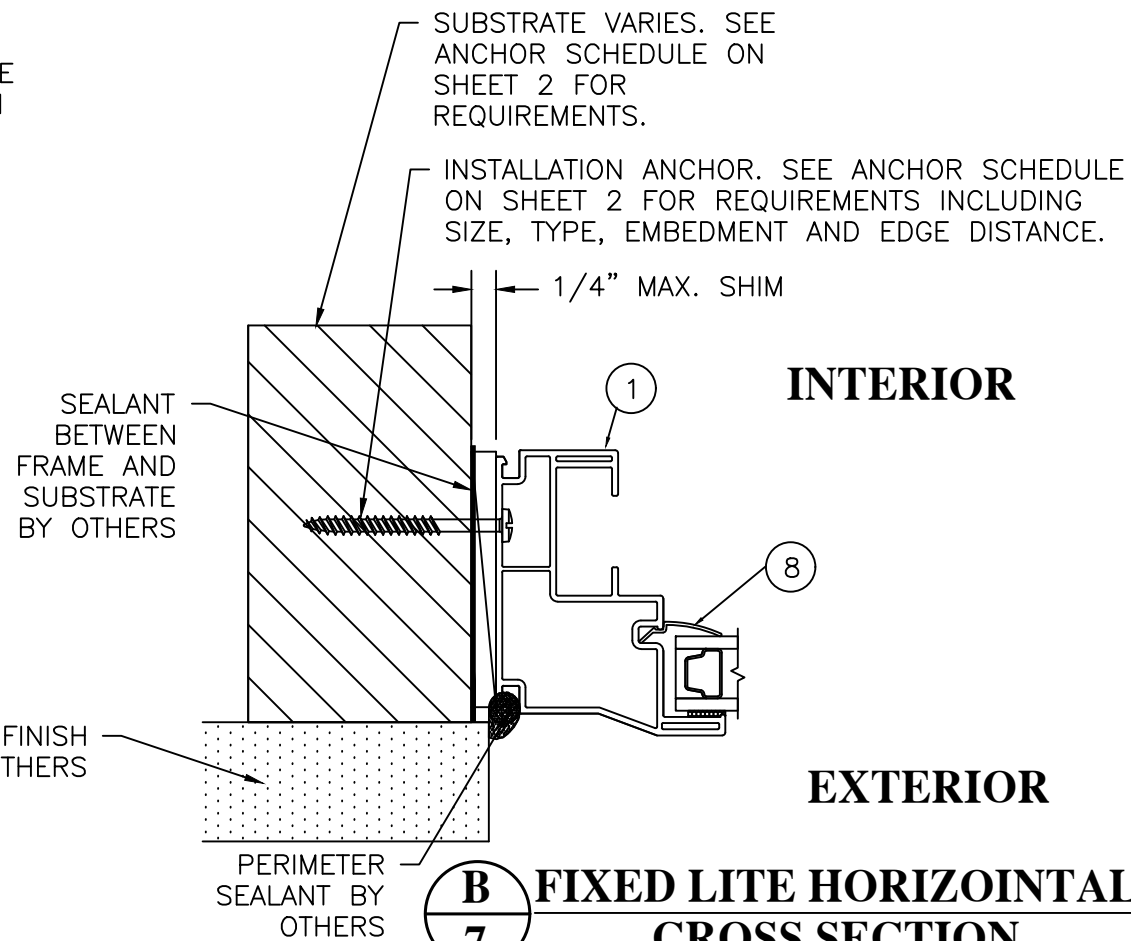


EXTERIOR

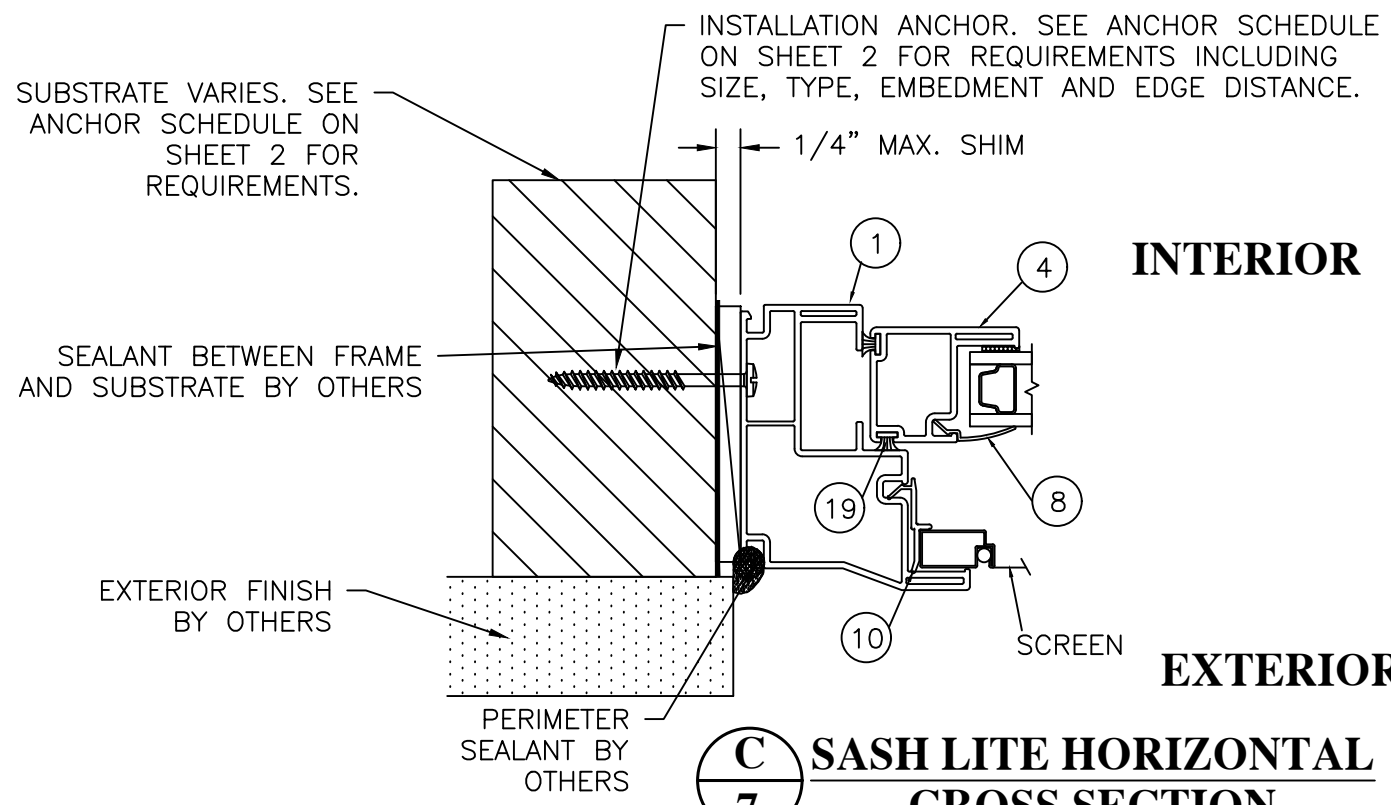
INTERIOR



A **VERTICAL CROSS SECTION**
7 THROUGH-FRAME INSTALLATION



B **FIXED LITE HORIZONTAL CROSS SECTION**
7 THROUGH-FRAME INSTALLATION



C **SASH LITE HORIZONTAL CROSS SECTION**
7 THROUGH-FRAME INSTALLATION

PROJECT # 419-0901

RENAISSANCE WINDOWS AND DOORS
13340 INTERNATIONAL PARKWAY
JACKSONVILLE, FL 32218

TITLE: SERIES 8500 VINYL SINGLE HUNG WINDOW
THROUGH FRAME INSTALLATION

DATE: 12/11/19

DRAWING NO: RWD0015

SHEET: 7 OF 8

REV: First Issue

DRAWN BY: RJA

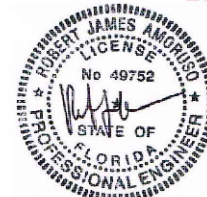
SCALE: N.T.S.

REV: First Issue

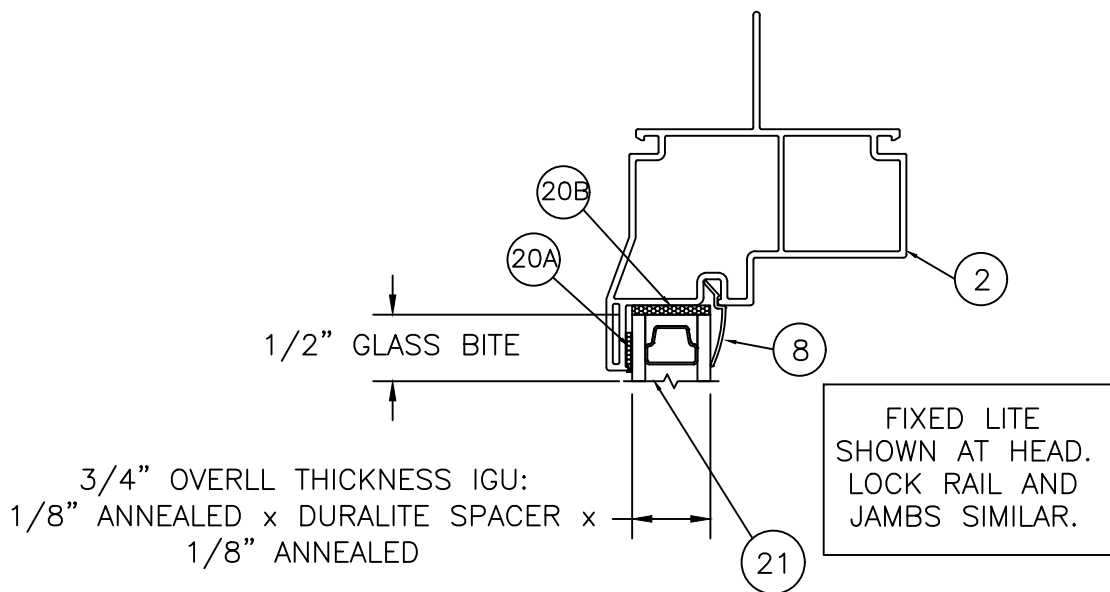
DATE: 12/11/19

PTC PRODUCT DESIGN GROUP, LLC
PO BOX 520775
LONGWOOD, FLORIDA 32752
Phone: 321.690.1788
Fax: 321.690.1789
Email: info@ptc-corp.com
P&PE C.A. NO. 23935

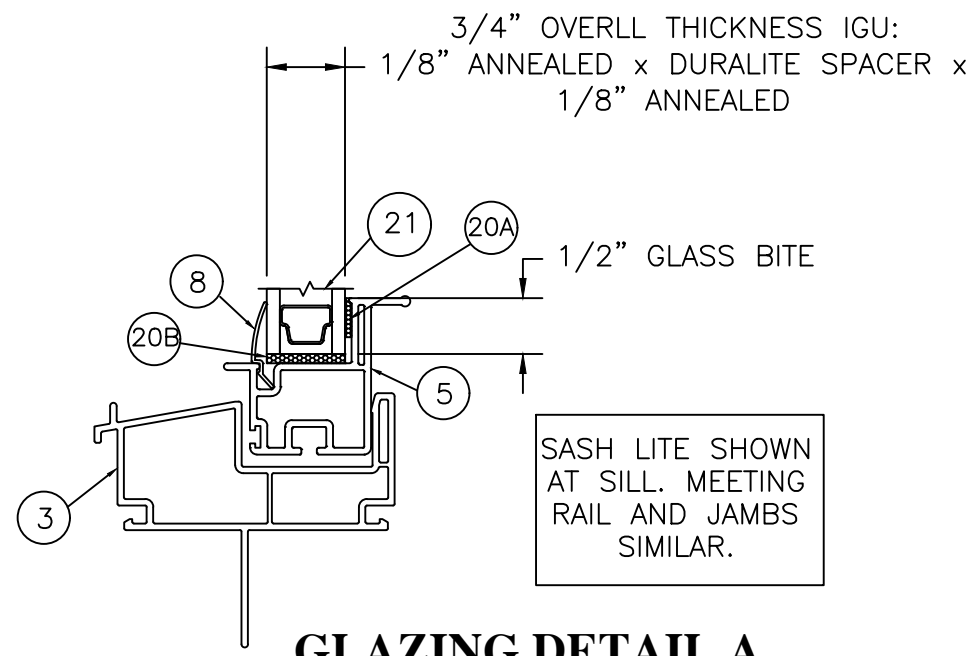
Robert J. Amoruso, P.E.
Florida P.E. No. 49752



Digitally
signed by
Robert J
Amoruso
Date:
2019.12.11
15:18:53
-05'00'



GLAZING DETAIL A



GLAZING DETAIL A

- NOTES:
1. A MINIMUM OF TWO (2) NEOPRENE SETTING BLOCKS WITH 70 TO 90 SHORE A DUROMETER HARDNESS ARE REQUIRED AT BOTTOM (SILL) OF GLAZING LITES MORE THAN 3 FEET IN WIDTH.
 2. AS-TESTED IGU SYSTEM SHOWN. SUBSTITUTIONS ARE ALLOWED IN ACCORDANCE WITH AAMA/WDMA/CSA 101/I.S. 2/A440-11, SECTIONS 10.2.3.2 AND 10.2.3.4. SEE SHEET 1 FOR DETAILS RELATED TO WINDOW SIZE / GLAZING DETAIL / DESIGN PRESSURE.

BILL OF MATERIALS 8500 SERIES SH			
BOM NO.	PART NO.	DESCRIPTION	REMARKS
1	7867	JAMB	PVC
2	7868	HEAD	PVC
3	7869	SILL	PVC
4	7863	VENT STILE	PVC
5	7866	VENT RAIL	PVC
6	7864	FIXED INTERLOCK	PVC
7	7865	VENT INTERLOCK	PVC
8	6177	GLAZING BEAD	PVC
9	STGBLK	SETTING BLOCK	NOT SHOWN
10	7871	SCREEN LOCK	OPTIONAL
HARDWARE			
12	9208	BASE	NOT SHOWN
13	9202	LEVER	NOT SHOWN
14	SHLK	CAM	
15	SHLKKPR	KEEPER	
16	677204	CAM LOCK (OPTIONAL)	USED IN DP50 TEST
17	677133	KEEPER (OPTIONAL)	USED IN DP50 TEST
18	110-5/MRBLCK	MEETING RAIL BLOCK	Apply 7864 to 7988 T-Bar
WEATHERSTRIPPNG			
19		WEATHERSTRIP	.187 x .270 FIN PILE
GLAZING			
20A		FOAM TAPE BACK-BEDDING	
20B		SILICONE	
21	GLAZING DETAIL A	3/4" OVERLL THICKNESS IGU	
REINFORCEMENT			
22	RNFCHK	FIXED REINFORCEMENT	ALUMINUM 6063-T5
23	RNFVNT	VENT REINFORCEMENT	ALUMINUM 6063-T5
BALANCE AND TILT COMPONENTS			
25	700 SERIES	BALANCE (CONSTANT FORCE)	NOT SHOWN
26	728	PIVOT LOCK SHOE (1.292" x .562")	NOT SHOWN
27	275	PIVOT BAR	NOT SHOWN
28	9637	ANCHOR	NOT SHOWN
29	76800/76900	TILT LATCH ASSEMBLY	NOT SHOWN
INSTALLATION COMPONENTS			
30	6384	SILL CLIP	PVC
31	8864	SNAP-ON FLANGE	PVC

PROJECT # 419-0901

RENAISSANCE WINDOWS AND DOORS
13340 INTERNATIONAL PARKWAY
JACKSONVILLE, FL 32218

TITLE:
SERIES 8500 VINYL SINGLE HUNG WINDOW
GLAZING DETAILS AND BOM

PREPARED BY:
RJA

DATE:
12/11/19

DRAWING NO:
RWD0015

SCALE:
N.T.S.

SHEET:
8 OF 8

REV:
First Issue

BY

DATE

DESCRIPTION

REV

PTC PRODUCT DESIGN GROUP, LLC
PO BOX 520775
LONGWOOD, FLORIDA 32752
Phone: 321.690.1788
Fax: 321.690.1789
Email: info@ptc-corp.com
FPE CA NO. 23385

Digitally signed by Robert J Amoruso
Date: 2019.12.11 15:18:53 -05'00'

Robert J. Amoruso, P.E.
Florida P.E. No. 49752