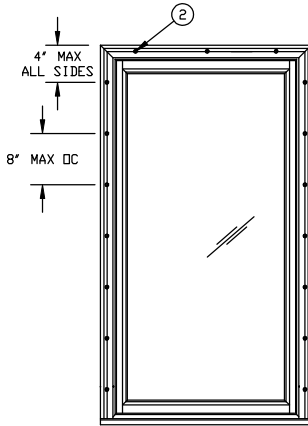
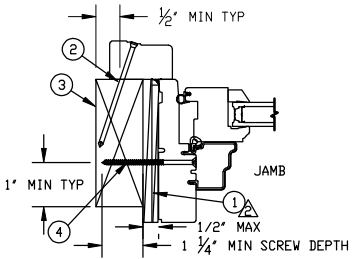
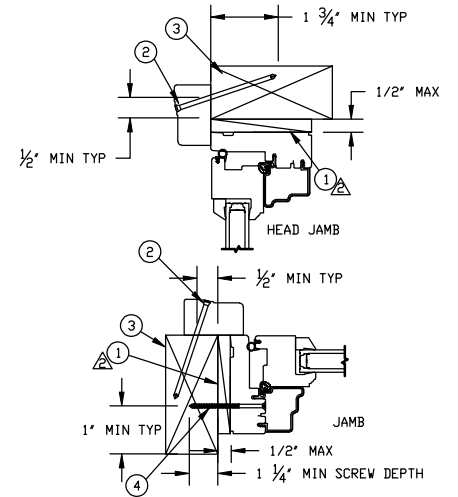
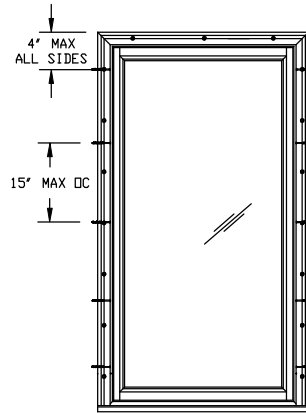


**BMC NAILING**



**SCREW THROUGH JAMB**

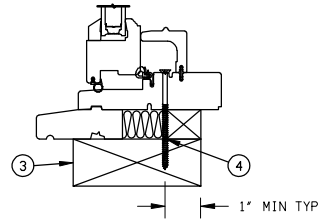


**BMC NAILING INSTALLATION:**

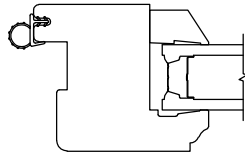
- UNIT MUST NOT BE IN DIRECT CONTACT WITH EITHER CONCRETE OR TREATED BUCK MATERIAL. IF SHIM SPACE IS LESS THAN 1/8" WRAPPING THE UNIT ON ALL 4 SIDES WITH WINDOW FLASHING TAPE IS REQUIRED AS A BARRIER BETWEEN THE UNIT AND CONCRETE ON TREATED LUMBER.
- TWO #8 X 3" SCREWS THROUGH ROTO OPERATOR.
- SCREWS MUST HAVE FULL EMBEDMENT.

**SCREW THROUGH JAMB INSTALLATION:**

- UNIT MUST NOT BE IN DIRECT CONTACT WITH EITHER CONCRETE OR TREATED BUCK MATERIAL. IF SHIM SPACE IS LESS THAN 1/8" WRAPPING THE UNIT ON ALL 4 SIDES WITH WINDOW FLASHING TAPE IS REQUIRED AS A BARRIER BETWEEN THE UNIT AND CONCRETE ON TREATED LUMBER.
- SECURE JAMBS WITH #8 X 3" SCREWS
- TWO #8 X 3" SCREWS THROUGH ROTO OPERATOR.
- SHIM AT EACH SCREW LOCATION.



**FULL FRAME DETAILS**



GLASS COMPLIES WITH ASTM E1300

**GLASS DETAIL**

**CATEGORY:**  
CASEMENT

**UNIT TYPE:**  
UWCA

UNIT	MAX FRAME SIZE	DP RATING
UL WD CSMNT	40 X 71 1/8	+50/-50

ITEM NO	REF NO	DESCRIPTION
4	-----	#8 X 3.000 WOOD SCREW
3	-----	WOOD BUCK BY OTHERS
2	-----	16D 3" CASING NAIL
1	-----	SHIM

**UNSPECIFIED TOLERANCES**

DECIMALS: XX ± .03 XXX ± .012	ANGLE DEG: ± .5
LINEAL: + .125 - .000	FAB LINEAL: ± N/A
MATERIAL:	N/A

<b>MARVIN</b>		<b>RESEARCH &amp; DEVELOPMENT</b>	
<b>COLLECTION:</b> ULTIMATE			
<b>DWG TYPE:</b> INSTALLATION			
<b>DESCRIPTION:</b> INSTALLATION FL 31273			
<b>CHK:</b>	<b>SIZE:</b> B	<b>CLASS:</b> MISC	<b>DWG NO:</b> 00126984
<b>APP:</b>	<b>SCALE:</b> NA	<b>DATE:</b> 12/21/20	<b>DWG BY:</b> KOMPELIEN, SARA
			<b>SHEET:</b> 1 OF 1

**NOTES:**

- THIS PRINT IS FOR STRUCTURAL PERFORMANCE ONLY. FOR FLASHING & SEALING INSTRUCTIONS, REFER TO THE INSTALLATION INSTRUCTIONS.
- SHIMS  
-PLACE A SHIM WITHIN 4-6 INCHES OF EACH CORNER AND SPACE ALL OTHERS EVENLY A MAXIMUM OF 10" APART.
- IF CHEMICALLY TREATED LUMBER IS USED FOR BUCK MATERIAL, FASTENERS INTO THE BUCK MUST BE A MINIMUM OF 0.90 OZ/FT<sup>2</sup> ZINC HOT DIPPED GALVANIZED OR STAINLESS STEEL TYPE 304 OR 316.

**NOTICE - CONFIDENTIAL INFORMATION**

The information in this document is privileged and strictly confidential. The information contained herein shall be used only by Marvin Windows and Doors employees and by those agents or suppliers granted official written permission. If the reader of this document is not the intended recipient, or the employee or agent of the intended recipient, please delete this document from all data storage devices, and destroy all hard copies. Any unauthorized dissemination, distribution, copying or other use of the information contained in this document is strictly prohibited.