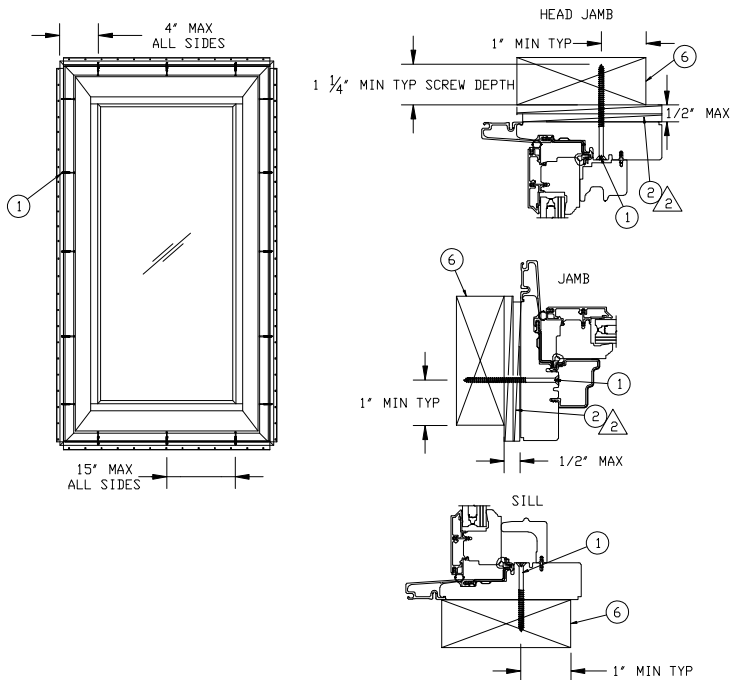


JAMB SCREW INSTALLATION



JAMB SCREW INSTALLATION METHOD:

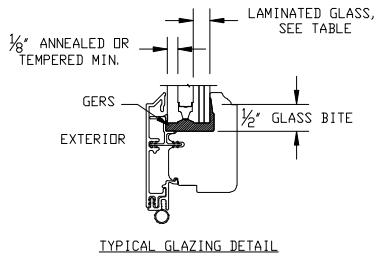
- UNIT MUST NOT BE IN DIRECT CONTACT WITH EITHER CONCRETE OR TREATED BUCK MATERIAL. IF SHIM SPACE IS LESS THAN 1/8" WRAPPING THE UNIT ON ALL 4 SIDES WITH WINDOW FLASHING TAPE IS REQUIRED AS A BARRIER BETWEEN THE UNIT AND CONCRETE OR TREATED LUMBER.
- SHIM AT EACH SCREW LOCATION.

TYPE	LAMINATED GLASS MAKE UP
A	3.0mm(.122") ANN+ .090KURARAY PVB+ 3.0mm(.122") ANN

UNIT	MAX FRAME SIZE	DP RATING	GLASS OPTION
UL CSMNT P IZ3	48 X 53 1/8 OR 53 1/8 X 48	+65/-65	TYPE A

NOTES FOR ALL METHODS:

- THIS PRINT IS FOR STRUCTURAL PERFORMANCE ONLY. FOR FLASHING & SEALING INSTRUCTIONS, REFER TO THE INSTALLATION INSTRUCTIONS.
- SHIMS  
-PLACE A SHIM WITHIN 4-6 INCHES OF EACH CORNER AND SPACE ALL OTHERS EVENLY A MAXIMUM OF 15" APART.
- IF CHEMICALLY TREATED LUMBER IS USED FOR BUCK MATERIAL, FASTENERS INTO THE BUCK MUST BE A MINIMUM OF 0.90 OZ/FT<sup>2</sup> ZINC HOT DIPPED GALVANIZED OR STAINLESS STEEL TYPE 304 OR 316.
- RECTANGULAR UNIT SHOWN, SHAPED UNITS ALSO APPLY.



ITEM NO	REF NO	DESCRIPTION
6	-----	WOOD BUCK BY OTHERS
5	-----	STRUCTURAL BRACKET
4	-----	#8 X 5/8" SCREW
3	-----	#8 X 1 1/2" SCREW
2	-----	SHIM
1	-----	#8 X 3.000 WOOD SCREW

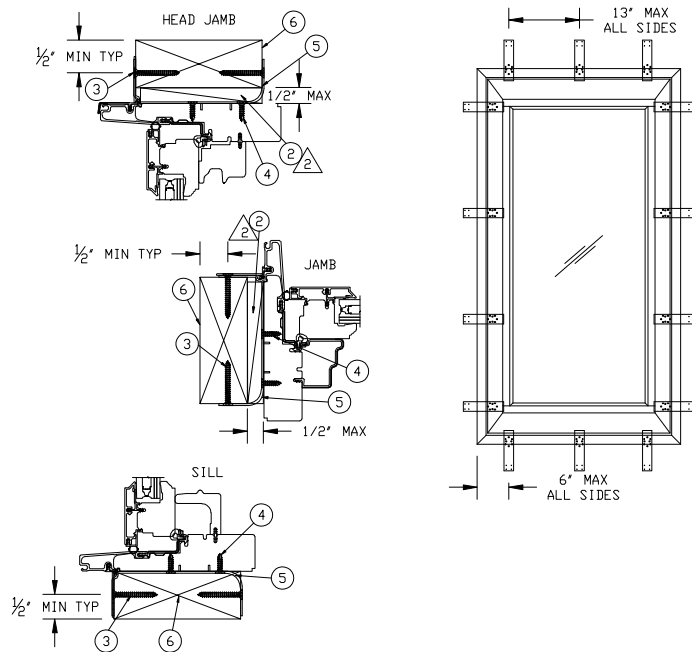
UNSPECIFIED TOLERANCES

DECIMALS:	ANGLE DEG:
XX ± .03	± .5
XXX ± .012	
LINEAL:	FAB LINEAL:
+ N/A	± .016
- N/A	

MATERIAL:

N/A

STRUCTURAL BRACKET INSTALLATION



STRUCTURAL BRACKET INSTALLATION METHOD:

- UNIT MUST NOT BE IN DIRECT CONTACT WITH EITHER CONCRETE OR TREATED BUCK MATERIAL. IF SHIM SPACE IS LESS THAN 1/8" WRAPPING THE UNIT ON ALL 4 SIDES WITH WINDOW FLASHING TAPE IS REQUIRED AS A BARRIER BETWEEN THE UNIT AND CONCRETE OR TREATED LUMBER.
- ATTACH TO THE UNIT WITH TWO #8 X 5/8" SCREWS.
- ATTACH TO THE BUCK WITH TWO #8 X 1 1/2" SCREWS ON EACH SIDE OF THE BUCK.
- SCREWS MUST HAVE FULL EMBEDMENT.

**MARVIN** RESEARCH & DEVELOPMENT

PRODUCT	ULTIMATE CASEMENT		
CATEGORY:	UCAPIZ3		
DWG TYPE:	INSTALLATION	CLASS:	MISC
DESCRIPTION:	INSTALLATION	DATE:	11/01/19
CHK:	SIZE:	DWG NO:	00120477
APP:	SCALE:	DWG BY:	KOMPELIEN, SARA
	NA	SHEET:	1 OF 1

NOTICE - CONFIDENTIAL INFORMATION

The information in this document is privileged and strictly confidential. The information contained herein shall be used only by Marvin Windows and Doors employees and by those agents or suppliers granted official written permission. If the reader of this document is not the intended recipient, or the employee or agent of the intended recipient, please delete this document from all data storage devices, and destroy all hard copies. Any unauthorized dissemination, distribution, copying or other use of the information contained in this document is strictly prohibited.