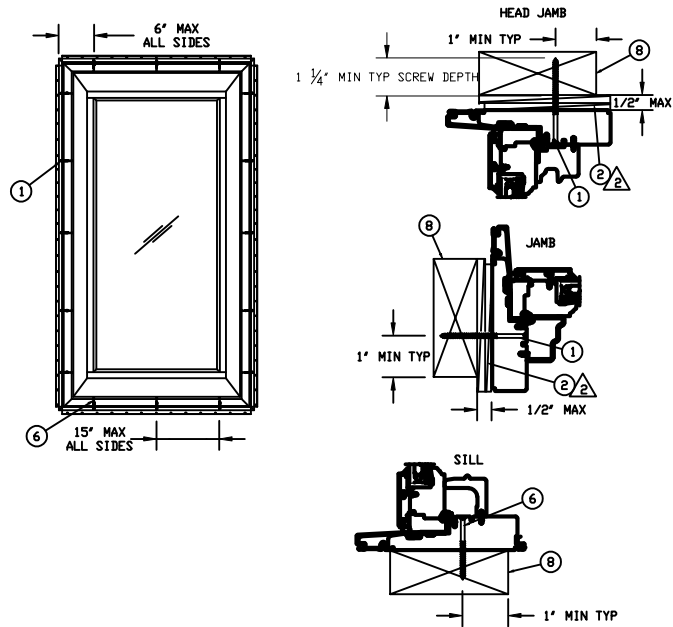
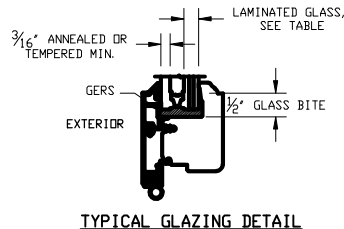
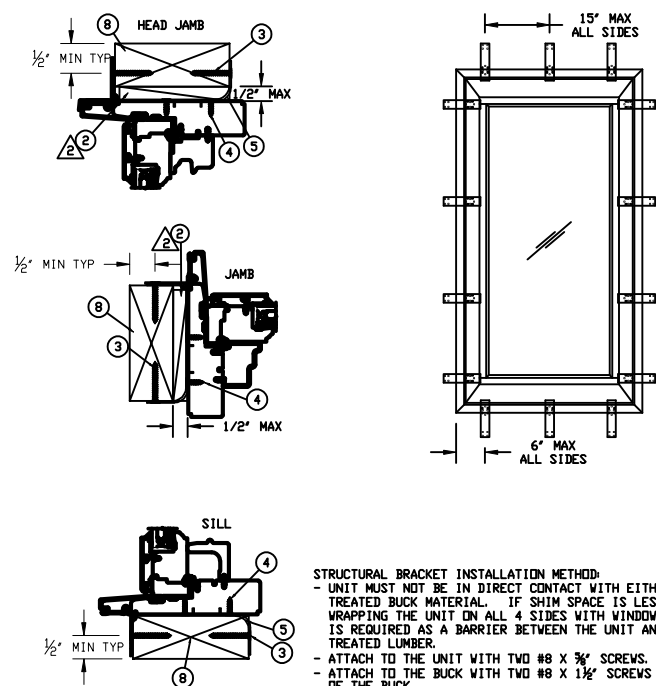


JAMB SCREW INSTALLATION



STRUCTURAL BRACKET INSTALLATION



- JAMB SCREW INSTALLATION METHOD:**
- UNIT MUST NOT BE IN DIRECT CONTACT WITH EITHER CONCRETE OR TREATED BUCK MATERIAL. IF SHIM SPACE IS LESS THAN 1/8" WRAPPING THE UNIT ON ALL 4 SIDES WITH WINDOW FLASHING TAPE IS REQUIRED AS A BARRIER BETWEEN THE UNIT AND CONCRETE OR TREATED LUMBER.
 - SECURE JAMBS AND HEAD JAMBS WITH #8 X 3" SCREWS.
 - SECURE THE SILL WITH #8 X 2 1/2" SCREWS.
 - SHIM AT EACH SCREW LOCATION.

- STRUCTURAL BRACKET INSTALLATION METHOD:**
- UNIT MUST NOT BE IN DIRECT CONTACT WITH EITHER CONCRETE OR TREATED BUCK MATERIAL. IF SHIM SPACE IS LESS THAN 1/8" WRAPPING THE UNIT ON ALL 4 SIDES WITH WINDOW FLASHING TAPE IS REQUIRED AS A BARRIER BETWEEN THE UNIT AND CONCRETE OR TREATED LUMBER.
 - ATTACH TO THE UNIT WITH TWO #8 X 3/4" SCREWS.
 - ATTACH TO THE BUCK WITH TWO #8 X 1 1/2" SCREWS ON EACH SIDE OF THE BUCK.
 - SCREWS MUST HAVE FULL EMBEDMENT.

TYPE	LAMINATED GLASS MAKE UP
A	3.9mm(.156") ANN+ .090KURARAY SGP+ 3.9mm(.156") ANN

UNIT	MAX FRAME SIZE	DP RATING	GLASS OPTION
UL CSMNT P IZ3	106 5/8 X 60 DR 60 X 106 5/8	+65/-65	TYPE A
UL CSMNT POP IZ3	106 5/8 X 60 DR 60 X 106 5/8	+65/-65	TYPE A
UL CSMNT P IZ3	72 5/8 X 77 1/8 X 77 1/8 X 72 5/8	+65/-65	TYPE A
UL CSMNT POP IZ3	72 5/8 X 77 1/8 X 77 1/8 X 72 5/8	+65/-65	TYPE A

- NOTES FOR ALL METHODS:**
- THIS PRINT IS FOR STRUCTURAL PERFORMANCE ONLY. FOR FLASHING & SEALING INSTRUCTIONS, REFER TO THE INSTALLATION INSTRUCTIONS.
 - SHIMS
- PLACE A SHIM WITHIN 4-6 INCHES OF EACH CORNER AND SPACE ALL OTHERS EVENLY A MAXIMUM OF 15" APART.
 - IF CHEMICALLY TREATED LUMBER IS USED FOR BUCK MATERIAL, FASTENERS INTO THE BUCK MUST BE A MINIMUM OF 0.90 OZ/FT² ZINC HOT DIPPED GALVANIZED OR STAINLESS STEEL TYPE 304 OR 316.

ITEM NO	REF NO	DESCRIPTION
8		WOOD BUCK BY OTHERS
7		2 INCH ROOFING NAIL
6		#8 X 2.5" WOOD SCREW
5		STRUCTURAL BRACKET
4		#8 X 5/8" SCREW
3		#8 X 1 1/2" SCREW
2		SHIM
1		#8 X 3.000 WOOD SCREW

UNSPECIFIED TOLERANCES	PRODUCT CATEGORY:
DECIMALS: XX ± .03 XXX ± .012	ULTIMATE CASEMENT
ANGLE DEG: ± .5	UCAPIZ3, UCAPOPIZ3
LINEAL: + N/A - N/A	DWG TYPE: INSTALLATION DESCRIPTION: INSTALLATION
FAB LINEAL: ± .016	CHK: B SIZE: B CLASS: MISC DATE: 10/21/09
MATERIAL: N/A	DWG NO: 00065808
	APP: NA SCALE: NA DWG BY: BORNEMAN, SKIP SHEET: 1 OF 1

MARVIN RESEARCH & DEVELOPMENT

ULTIMATE CASEMENT

UCAPIZ3, UCAPOPIZ3

INSTALLATION

00065808

BORNEMAN, SKIP