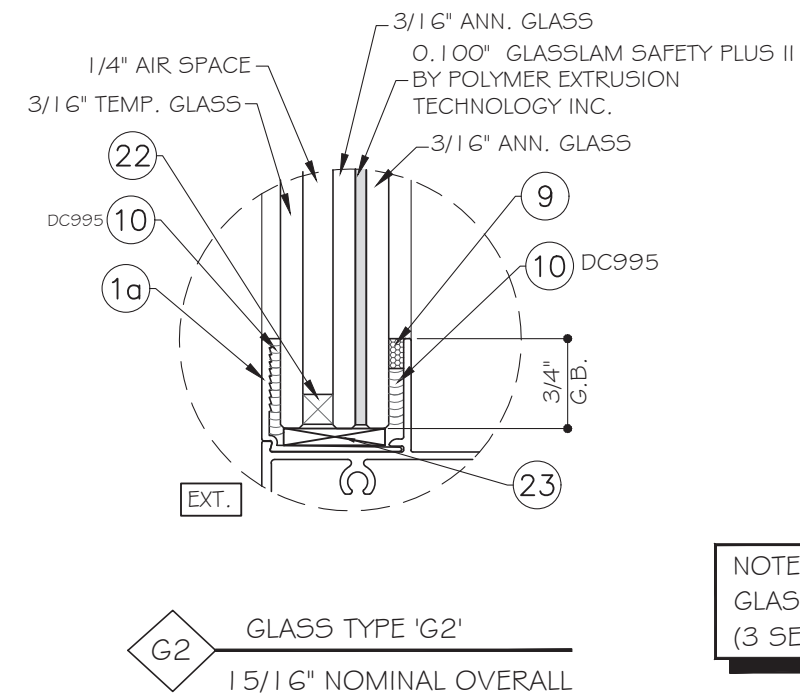
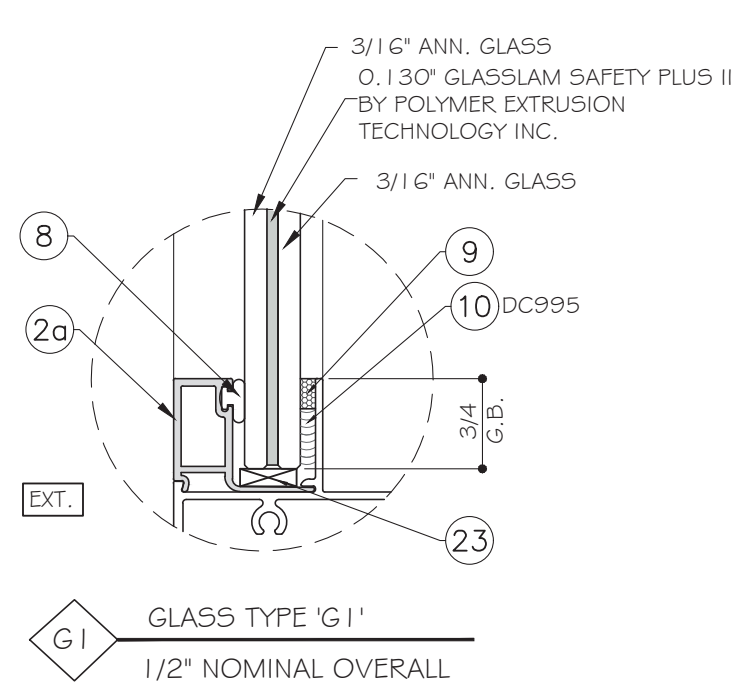


EMC WINDOW AND DOORS LLC.
 SERIES "CS 2100" ALUMINUM CASEMENT WINDOWS
 LARGE AND SMALL MISSILE IMPACT



NOTE:
 GLASS COMPLIES WITH ASTM E 1300-09
 (3 SEC. GUSTS).

GENERAL NOTES:

- THIS PRODUCT HAS BEEN DESIGNED AND TESTED TO COMPLY WITH THE REQUIREMENTS OF THE 7TH EDITION OF FLORIDA BUILDING CODE 2020/ 8TH EDITION OF FLORIDA BUILDING CODE 2023 INCLUDING HIGH VELOCITY HURRICANE ZONE (HVHZ).
- WINDOWS RATED FOR LARGE AND SMALL MISSILE IMPACT. LMI SYSTEM TO BE USED FOR INSTALLATIONS UP TO 30 FT OF GRADE. FOR ABOVE 30 FT OF GRADE, SMI TO BE USED. IMPACT SHUTTERS ARE NOT REQUIRED.
- THESE WINDOWS ARE APPROVED FOR AIR AND WATER INFILTRATION.
- ANCHORS SHALL BE AS LISTED, SPACED AS SHOWN ON DETAILS. ANCHORS EMBEDMENT TO BASE MATERIAL SHALL BE BEYOND WALL DRESSING OR STUCCO.
- ANCHORING OR LOADING CONDITIONS NOT SHOWN IN THESE DETAILS ARE NOT PART OF THIS APPROVAL.
- MATERIALS INCLUDING BUT NOT LIMITED TO STEEL/METAL SCREWS THAT COME INTO CONTACT WITH OTHER DISSIMILAR MATERIALS SHALL MEET THE REQUIREMENTS OF THE 7TH EDITION OF FLORIDA BUILDING CODE 2020/ 8TH EDITION OF FLORIDA BUILDING CODE 2023 SECTION AS APPLICABLE.
- METAL STRUCTURES BY OTHERS TO BE DESIGNED TO SUPPORT THE LOADS IMPOSED BY THIS GLAZING SYSTEM AND TO TRANSFER SUCH LOADS TO THE BUILDING MAIN STRUCTURE.
- ULTIMATE LOAD OBTAINED FROM ASCE 7-16/ ASCE 7-22, MULTIPLY BY 0.6 SHALL BE LESS THAN OR EQUAL TO MAX. DESIGN LOAD IN THIS DOCUMENT. THE DESIGN LOADS SHOWN IN THIS DOCUMENT ARE ALLOWABLE DESIGN LOADS.
- MANUFACTURER'S LABEL SHALL BE LOCATED ON A READILY VISIBLE LOCATION IN ACCORDANCE WITH SECTION 1709.9.3 OF FLORIDA BUILDING CODE LABELING TO COMPLY WITH SECTION 1709.9.2.

USE CHARTS AS FOLLOWS.

- STEP 1: DETERMINE DESIGN WIND LOAD REQUIREMENTS BASED ON WIND VELOCITY, BLDG. HEIGHT, WIND ZONE USING APPLICABLE ASCE 7-16 /ASCE 7-22 STANDARD OR WIND TUNNEL REPORTS.
- STEP 2: SEE SHEET E1 FOR APPROVED TYPICAL ELEVATION & CONFIGURATION.
- STEP 3: SEE SHEET E2 FOR ALLOWED WINDOW SIZE AND APPROVED DESIGN LOAD. FOR WINDOW MULL TOGETHER WITH 1"X4"X1/8" ALUM. MULLION, DESIGN LOAD FOR WINDOW GOVERNS.
- STEP 4: ANCHOR OPTION SEE SHEET A1. ANCHOR LAYOUT SEE SHEET E1.
- STEP 5: THE LOWEST VALUE RESULTING FROM STEP 3 THAT EXCEED THE DESIGN WIND PRESSURES DETERMINED THRU STEP 1 SHALL APPLY TO ENTIRE SYSTEM.

ABBREVIATIONS AND SYMBOLS	
D.L.O. - DAYLITE OPENING	
F.H. - FRAME HEIGHT	
F.W. - FRAME WIDTH	
W/ - WITH	
W/O - WITHOUT	
O.C. - ON CENTER	
	SECTION NUMBER
	SHEET NUMBER

LIMITATIONS OF USE

A- THIS PRODUCT EVALUATION DOCUMENT (P.E.D.) PREPARED BY THIS ENGINEER IS GENERIC AND DOES NOT PROVIDE INFORMATION FOR A SITE SPECIFIC PROJECT, i.e. WHERE THE SITE CONDITIONS DEVIATE FROM THE P.E.D.

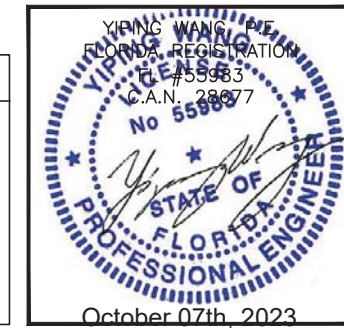
B- CONTRACTOR TO BE RESPONSIBLE FOR THE SELECTION, PURCHASE AND INSTALLATION OF THIS PRODUCT BASED ON THIS PRODUCT EVALUATION PROVIDED HE/SHE DOES NOT DEVIATE FROM THE CONDITIONS DETAILED ON THIS DOCUMENT.

C- THIS PRODUCT EVALUATION DOCUMENT WILL BE CONSIDERED INVALID IF ALTERED BY ANY MEANS.

D- SITE SPECIFIC PROJECTS SHALL BE PREPARED BY A FLORIDA REGISTERED ENGINEER OR ARCHITECT WHICH WILL BECOME THE ENGINEER OF RECORD (E.O.R.) FOR THE PROJECT AND WHO WILL BE RESPONSIBLE FOR THE PROPER USE OF THE P.E.D. ENGINEER OF RECORD, ACTING AS A DELEGATED ENGINEER TO THE P.E.D. ENGINEER SHALL SUBMIT TO THIS LATTER THE SITE SPECIFIC DRAWINGS FOR REVIEW.

E- THIS P.E.D. SHALL BEAR THE DATE AND ORIGINAL SEAL AND SIGNATURE OF THE PROFESSIONAL ENGINEER OF RECORD THAT PREPARED IT.

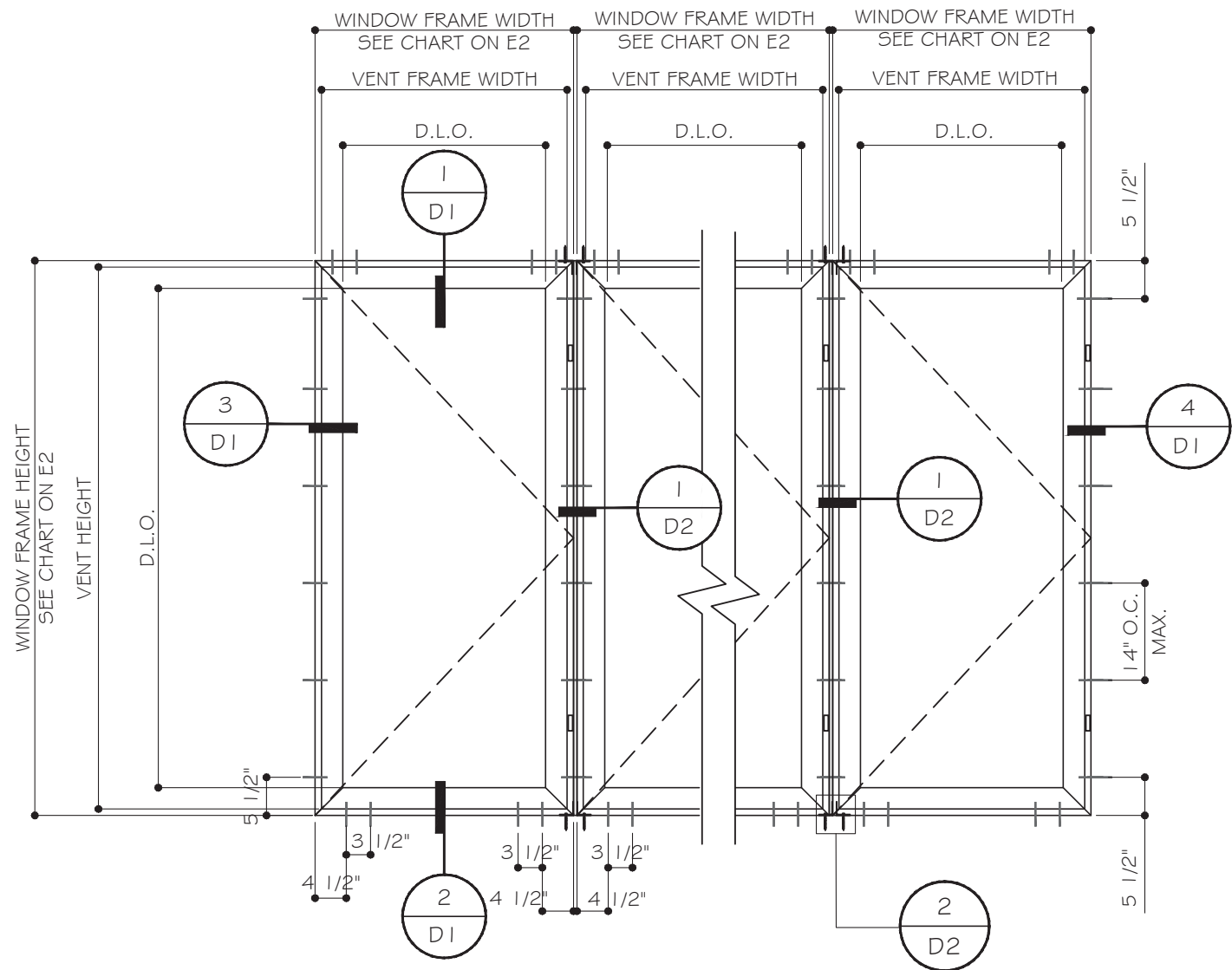
FLORIDA APPROVAL:
FL#35387



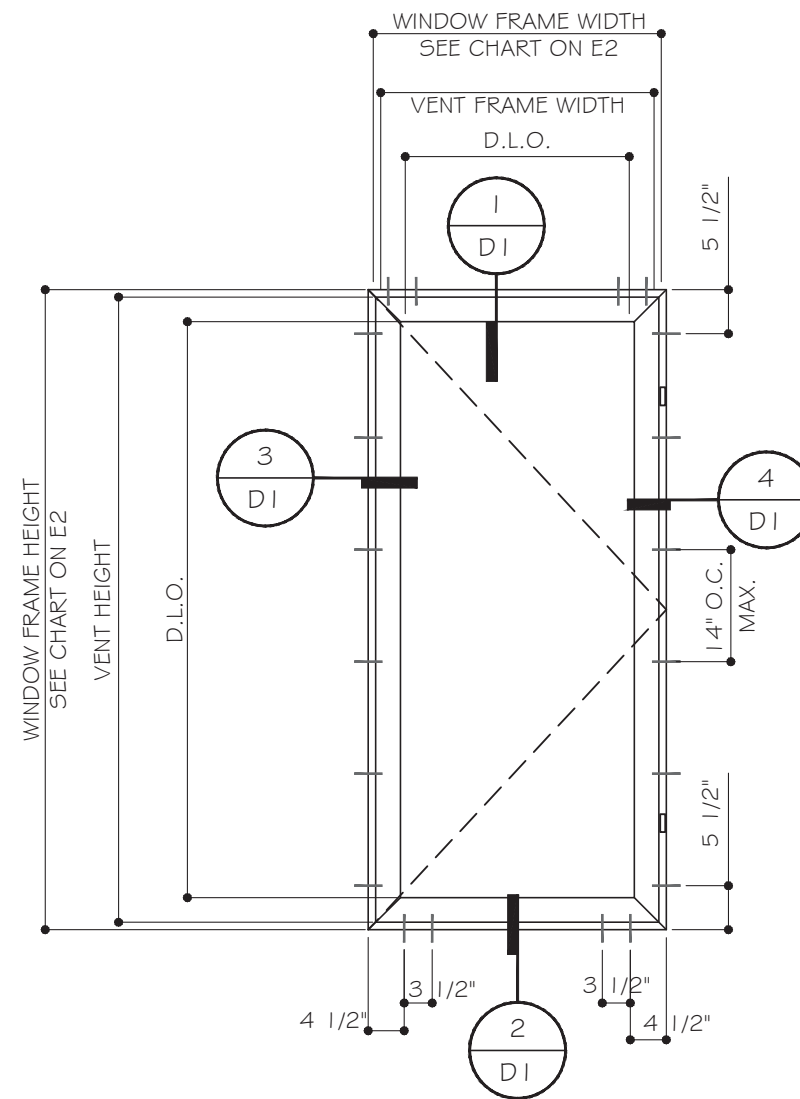
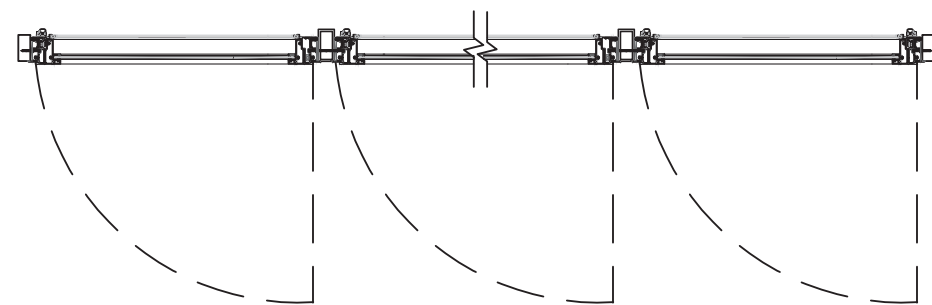
MCY ENGINEERING, INC.
 GLAZING CONSULTANTS
 12781 MIRAMAR PKWY., STE. 301
 MIRAMAR, FL 33027 P: 305.271.0117
 www.MCYEngineering.com mcy@mcyengineering.com

SERIES "CS 2100" ALUMINUM CASEMENT WINDOW - L.M.I.& S.M.I.
EMC WINDOWS AND DOORS, LLC.
 1356 W. 76TH STREET
 HIALEAH, FL 33014
 TEL: (305) 283-6280 EMCWindowsDoors@gmail.com

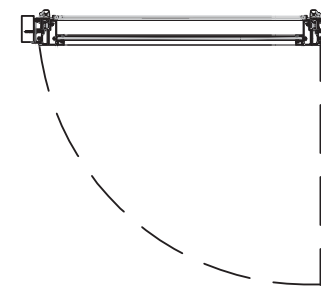
Rev. No.	Date	Drawn By	Description
R3	09/25/2023	Jamess	UPDATE FBC 2023
Drawn Date 09.25.2023		Scale	
DRAWING NO. AD20-33			
COVER			
Sheet No.		1 OF 10	



TYPICAL EXTERIOR ELEVATIONS



TYPICAL EXTERIOR ELEVATIONS



FLORIDA APPROVAL:
FL#35387

YIPING WANG
FLORIDA REGISTRATION
FL#35387
C.A.N. 28877
No 55988
STATE OF FLORIDA
PROFESSIONAL ENGINEER
October 07th, 2023

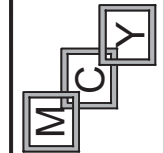
SERIES "CS 2100" ALUMINUM CASEMENT WINDOW - L.M.I.& S.M.I.

EMC WINDOWS AND DOORS, LLC.

1356 W. 76TH STREET

HIALEAH, FL 33014

TEL. (305) 283-6280 EMCWindowsDoors@gmail.com



MCY ENGINEERING, INC.
GLAZING CONSULTANTS

12781 MIRAMAR PKWY., STE. 301

MIRAMAR, FL 33027

P: 305.271.0117

www.MCYEngineering.com mcy@mcyengineering.com

Rev. No.	Date	Drawn By	Description
R3	09.25.2023	James	UPDATE FBC 2023

Drawn Date	Scale
09.25.2023	AS SHOWN

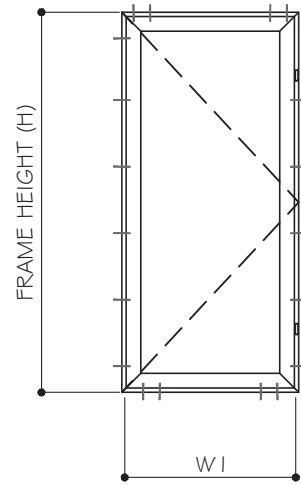
DRAWING NO.
AD20-33

E1

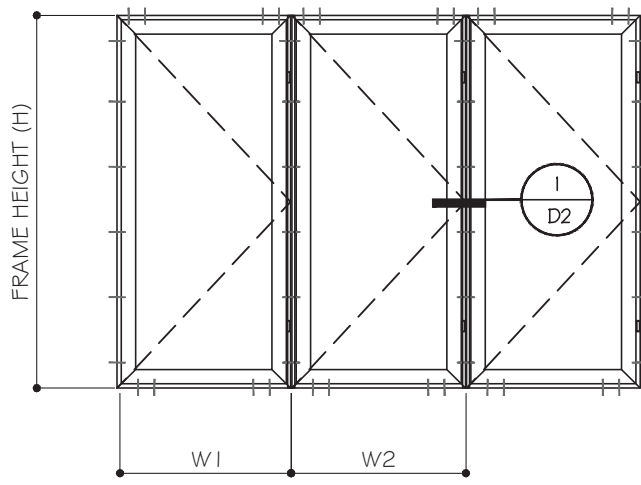
Sheet No.
02 OF 10

CHART# 1 :

WINDOW ALLOW DESIGN LOAD (PSF)			
NOM. DIMENSION		GLASS OPTION	
BUCK HEIGHT	BUCK WIDTH	"G1"	"G2"
H (in)	W (in)	(+/-) psf	(+/-) psf
48	24	80.0	70.0
	30	80.0	70.0
	36	80.0	70.0
	42	80.0	70.0
	48	80.0	70.0
54	24	80.0	70.0
	30	80.0	70.0
	36	80.0	70.0
	42	80.0	70.0
	48	80.0	70.0
60	24	80.0	70.0
	30	80.0	70.0
	36	80.0	70.0
	42	80.0	70.0
	48	80.0	70.0
66	24	80.0	70.0
	30	80.0	70.0
	36	80.0	70.0
	42	80.0	70.0
	48	80.0	70.0
72	24	80.0	70.0
	30	80.0	70.0
	36	80.0	70.0
78	24	80.0	70.0
	30	80.0	70.0
	36	80.0	70.0
84	24	80.0	70.0
	30	80.0	70.0
	36	80.0	70.0
90	24	80.0	70.0
	30	65.3	65.3
96	24	65.9	65.9
	30	53.5	53.5

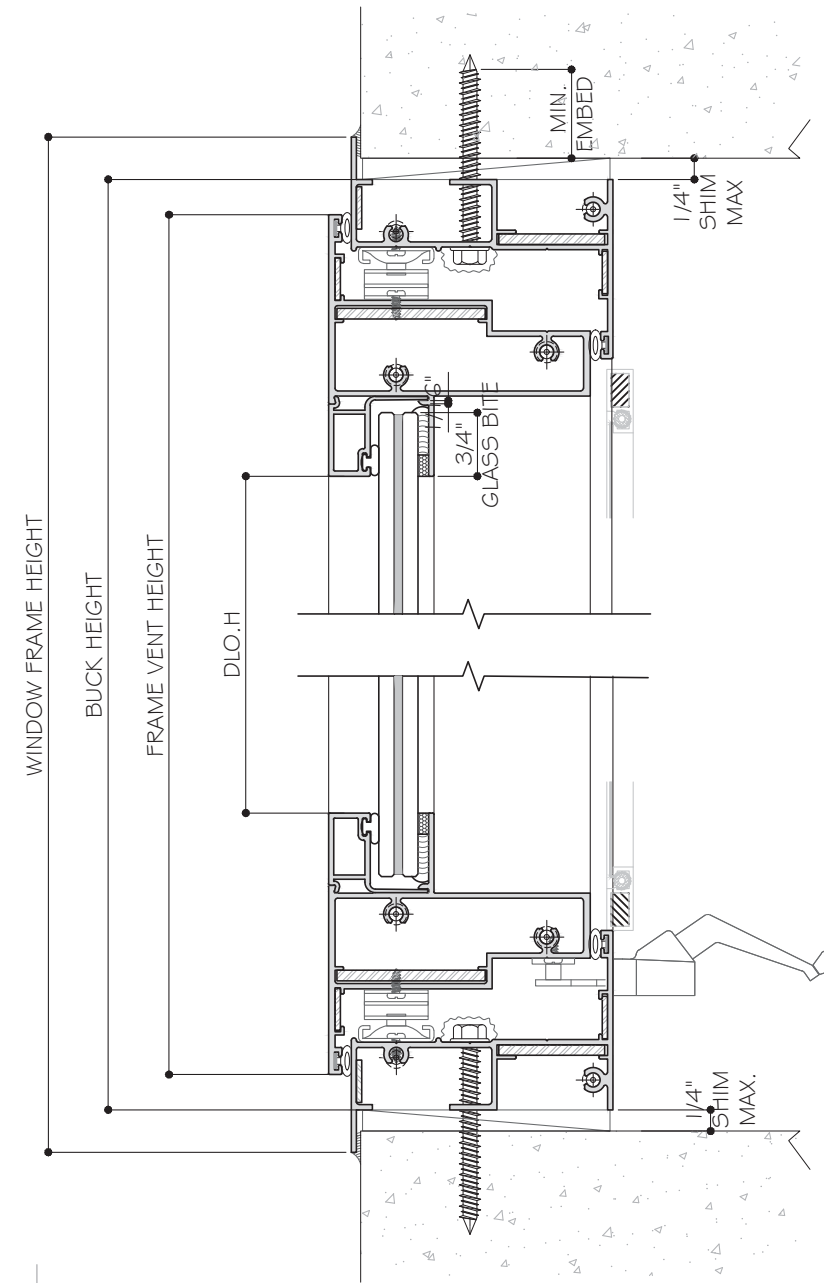
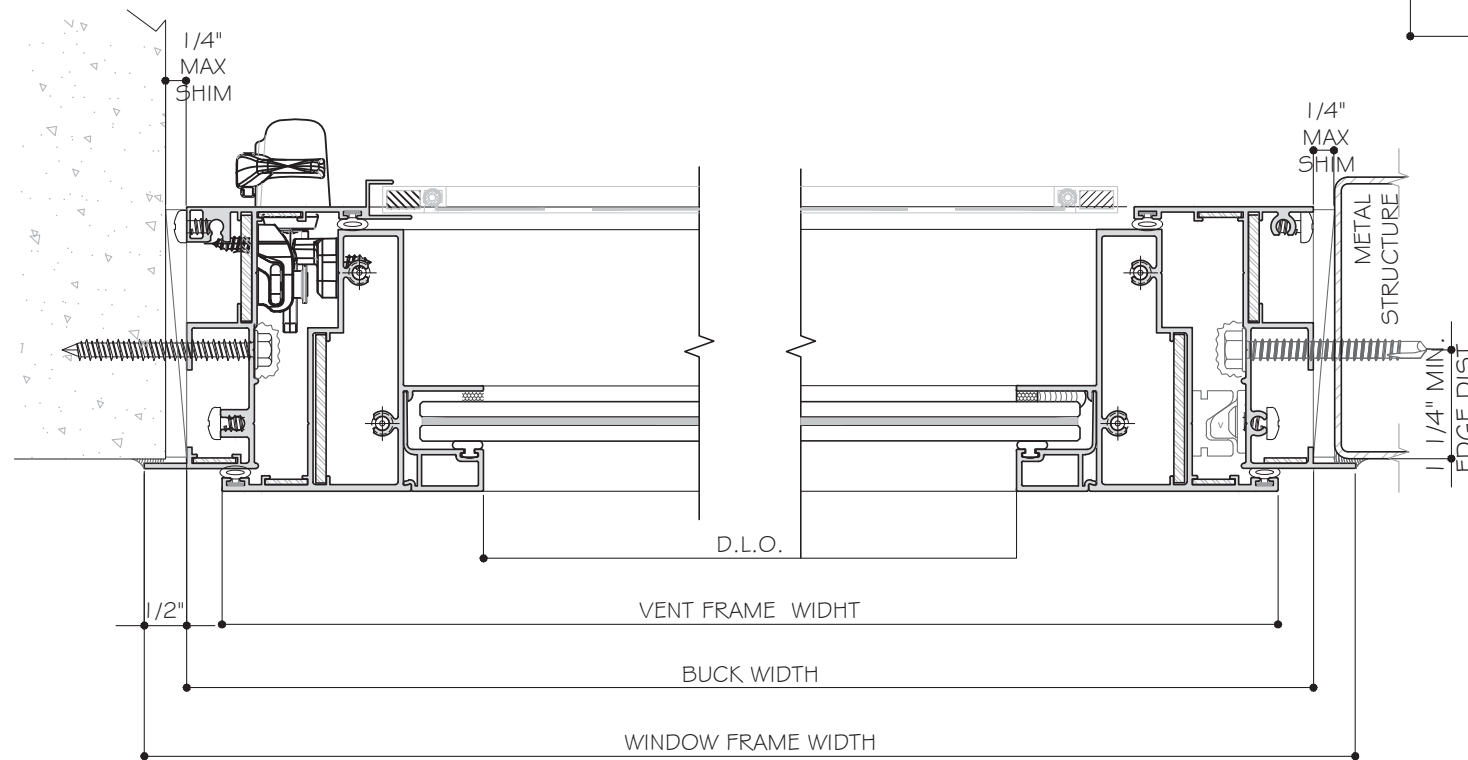


SINGLE UNIT WINDOW
(W) = W1



WIDTH AT FRAME MULLION
(W) = W1 OR W2
MULLION MEET CHART 1 REQUIREMENT

BUCK WIDTH= FRAME WIDTH - 1"
BUCK HEIGHT= FRAME HEIGHT - 1"
VENT WIDTH= FRAME WIDTH - 1.84"
VENT HEIGHT= FRAME HEIGHT - 1.84"
DLOW=FRAME WIDTH - 8"
DLOH=FRAME HEIGHT - 8"



FLORIDA APPROVAL:
FL#35387



MCY ENGINEERING, INC.
GLAZING CONSULTANTS
12781 MIRAMAR PKWY., STE. 301
MIRAMAR, FL 33027 P: 305.271.0117
www.MCYEngineering.com mcy@mcyengineering.com

SERIES "CS 2100" ALUMINUM CASEMENT WINDOW - L.M.I.& S.M.I.
EMC WINDOWS AND DOORS, LLC.
1356 W. 76TH STREET
HIALEAH, FL 33014
TEL: (305) 283-6280 EMCWindowsDoors@gmail.com

Rev. No.	Date	Drawn By	Description
03	09.25.2023	James	UPDATE FBC 2023
02	09.25.2023	James	UPDATE FBC 2023

Drawn Date: 09.25.2023 Scale: AS SHOWN
DRAWING NO.: AD20-33
Sheet No.: E2
03 OF 10

TYPICAL ANCHORS:

TYPE "A": 1/4" DIA. ULTRACON + BY DEWALT (Fu = 164 KSI, Fy = 148 KSI)
 1-1/2" EMBED INTO WOOD BUCK OR WOOD STRUCTURE
 OR THRU 1X OR 2X BUCKS INTO CONCRETE OR MASONRY
 W/ 1 3/4" MIN. EMBED

TYPE "B": 1/4" DIA. ULTRACON + BY DEWALT (Fu = 164 KSI, Fy = 148 KSI)
 1-3/4" EMBED DIRECTLY INTO CONCRETE
 1-3/4" EMBED DIRECTLY INTO GROUND FILLED BLOCK (JAMB ONLY)
 1 1/4" EMBED DIRECTLY INTO HOLLOW BLOCK (JAMB ONLY)

TYPE "B": #14 DIA. SMS (Fy=57KSI , Fu=74 KSI)
 OR 1/4" TEKS- SELF DRILLING SCREW (Fy=92 KSI, Fu=120KSI)
 INTO METAL STRUCTURE
 STEEL : 12 GA. MIN. (Fy = 36 KSI MIN.)
 (STEEL IN CONTACT WITH ALUMINUM TO BE PLATED OR PAINTED)
 (3) THREADS MIN. PENETRATION BEYOND METAL SUBSTRATE
 INTO FLORIDA APPROVED ALUMINUM MULLIONS
 ALUMINUM : 1/8" THK. MIN. (6063-T5 MIN.)

ANCHOR EDGE DISTANCES

INTO CONCRETE AND MASONRY = 1 1/4" MIN.
 INTO METAL STRUCTURE = 3/4" MIN.
 INTO WOOD = 1" MIN.

CONCRETE AT HEAD,SILL OR JAMB:

f'c= 3050 PSI MIN.

C-90 HOLLOW / FILLED BLOCK AT JAMB:

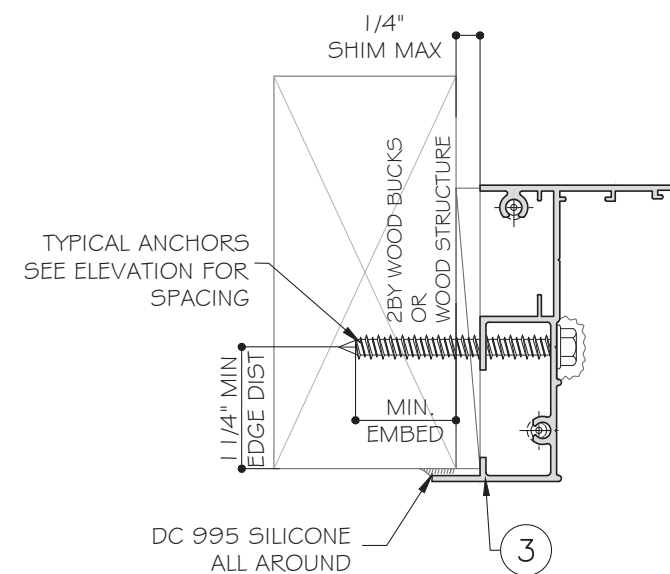
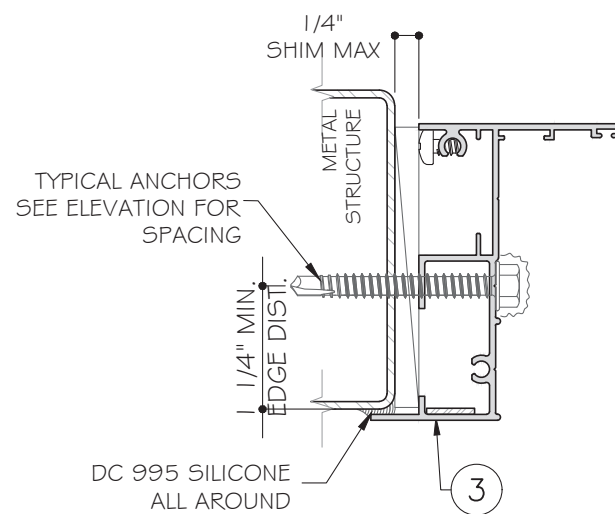
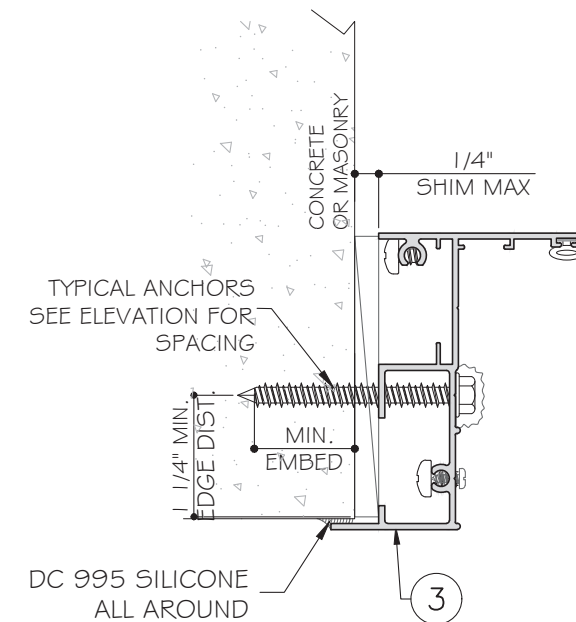
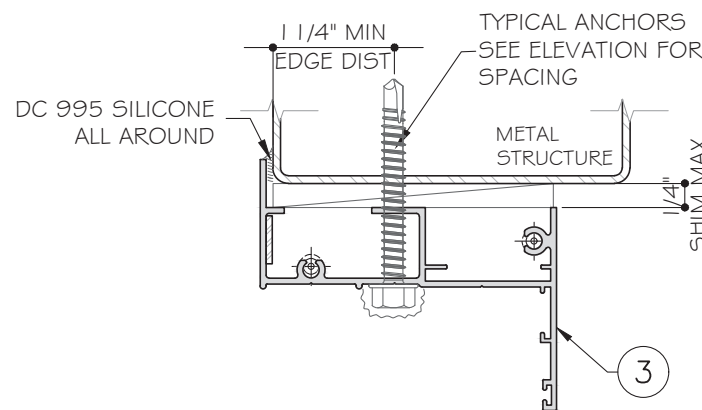
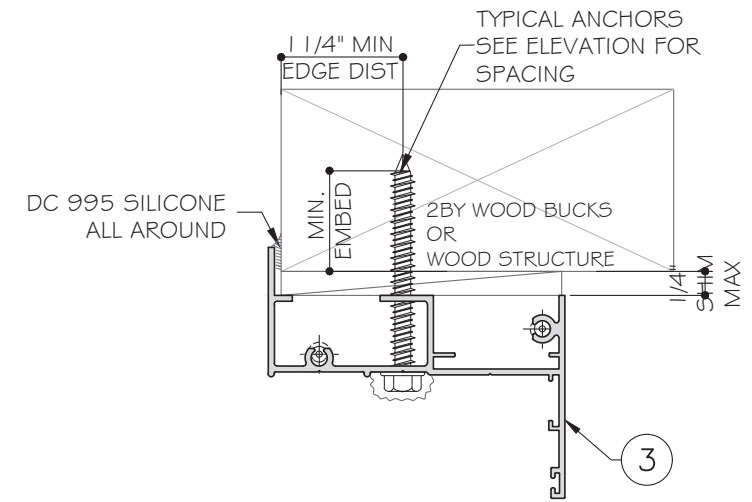
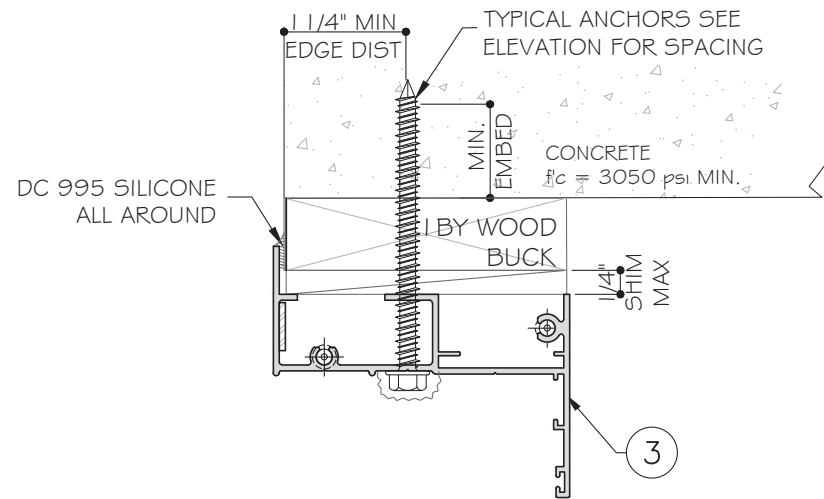
f'm=2000 PSI MIN.

WOOD STRUCTURE:SG=0.55 MIN.

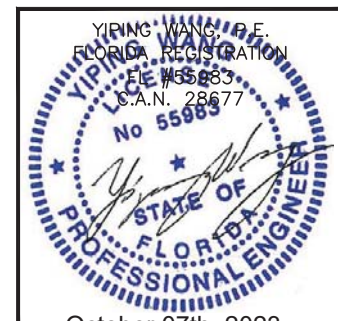
WOOD BUCK & METAL STRUCTURE NOT BY EMC MUST BE DESIGNED AND ANCHORED PROPERLY TO SUSTAIN THE LOADS IMPOSED BY GLAZING SYSTEM AND TRANSFER THEM TO THE BUILDING STRUCTURE.

SEALANTS:

ALL FRAME AND PANEL JOINT, INSTALLATION SCREWS AND HEADS OF ANCHOR SCREWS TO BE SEALED WITH DOW CORNING 899 SILICONE BUILDING SEALANT.



FLORIDA APPROVAL:
FL#35387

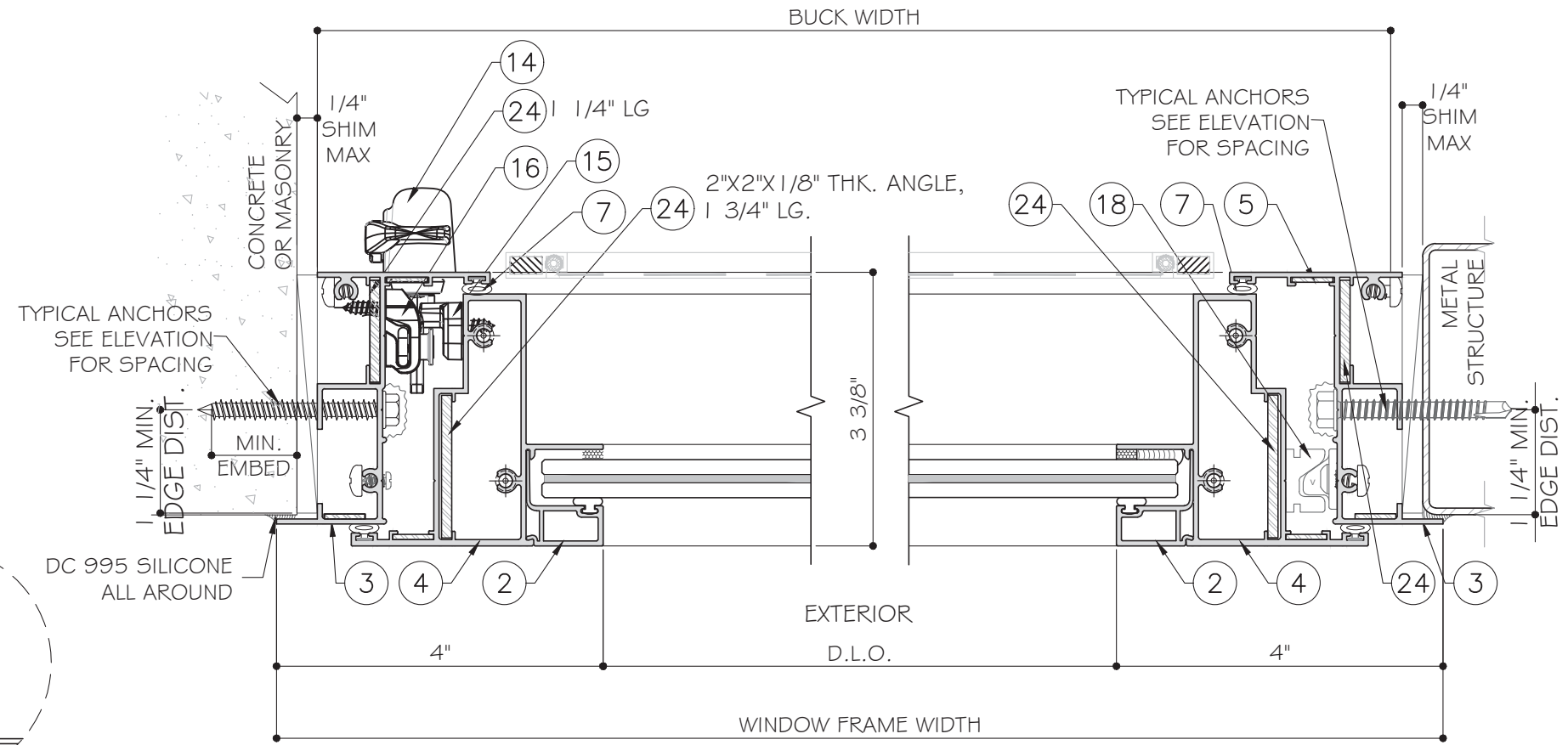
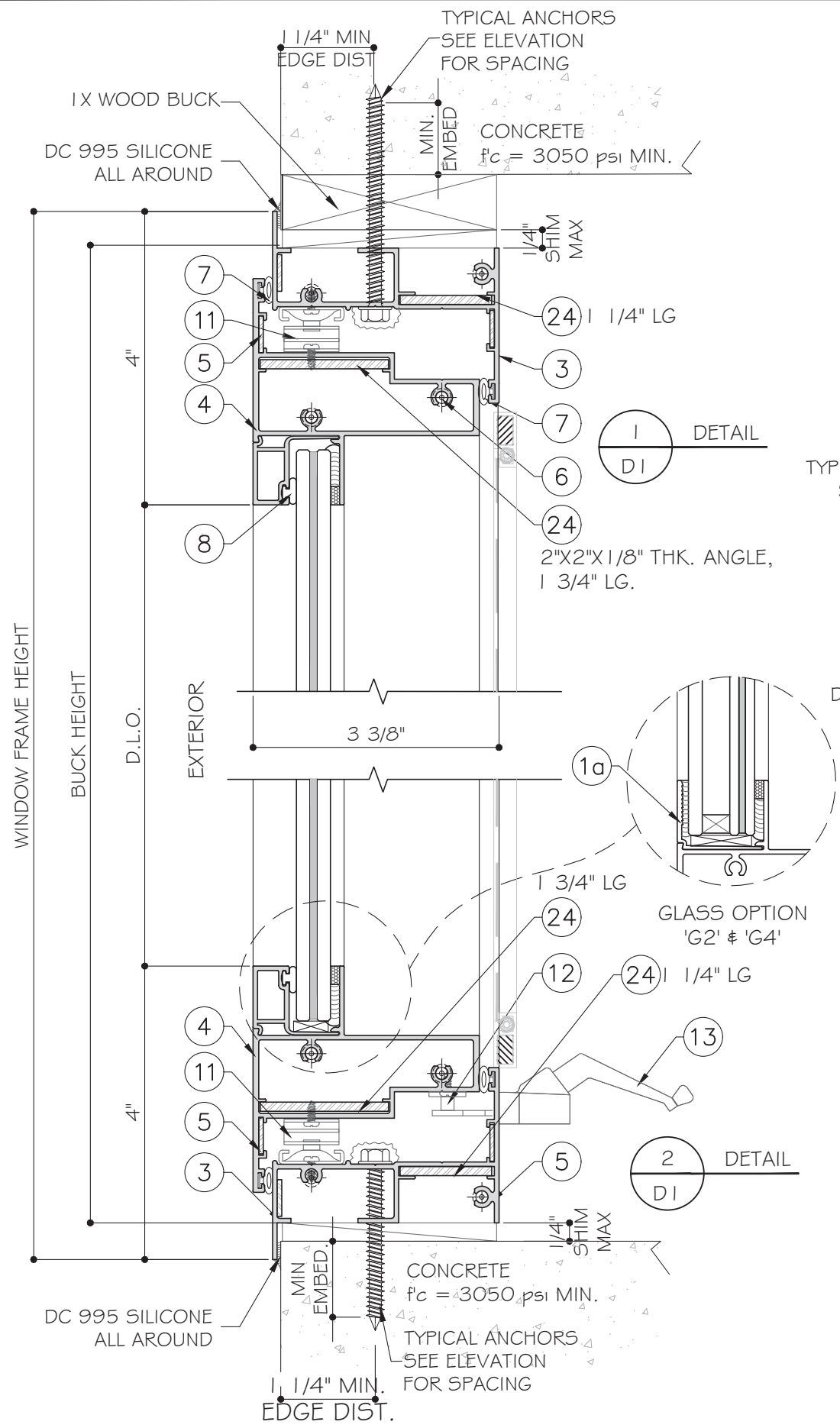


October 07th, 2023

MCY ENGINEERING, INC.
 GLAZING CONSULTANTS
 12781 MIRAMAR PKWY, STE. 301
 MIRAMAR, FL 33027 P: 305.271.0117
 www.MCYEngineering.com mcy@mcyengineering.com

SERIES "CS 2100" ALUMINUM CASEMENT WINDOW - L.M.I.&S.M.I.
EMC WINDOWS AND DOORS, LLC.
 1356 W. 76TH STREET
 HIALEAH, FL 33014
 TEL: (305) 283-6280 EMCWindowsDoors@gmail.com

Rev. No.	Date	Drawn By	Description
R3	09.25.2023	James	UPDATE FBC 2023
Drawn Date		Scale	
DRAWING NO.			
AD20-33			
Sheet No.			
04 OF 10			

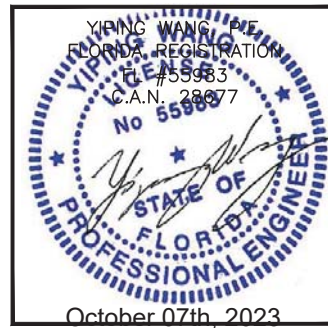


1
DI
DETAIL

3
DI
DETAIL

4
DI
DETAIL

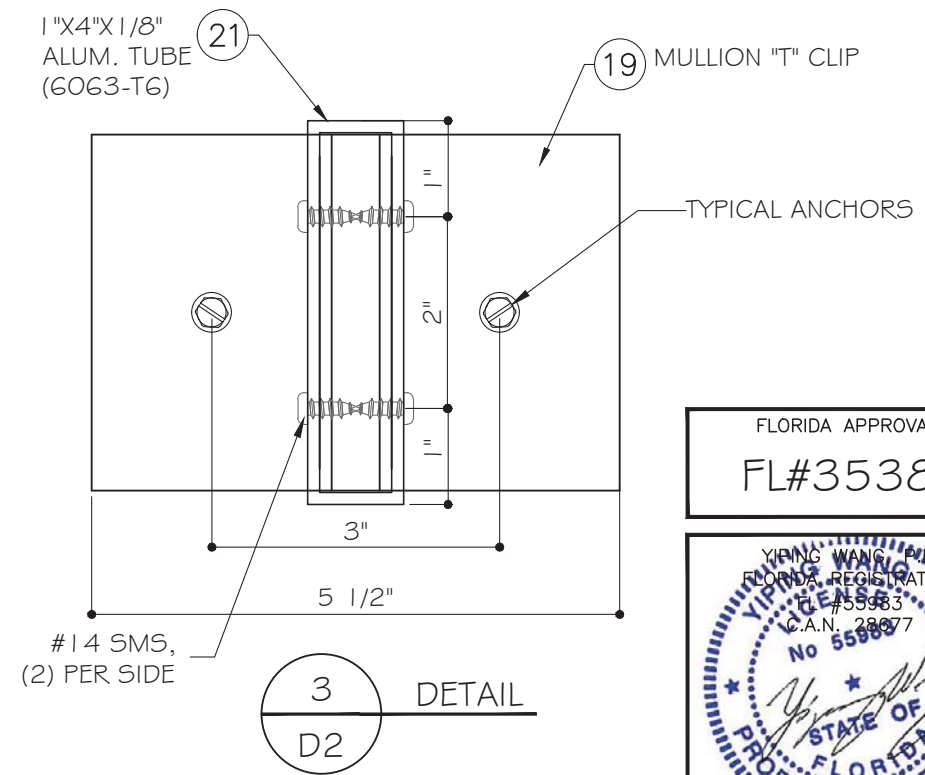
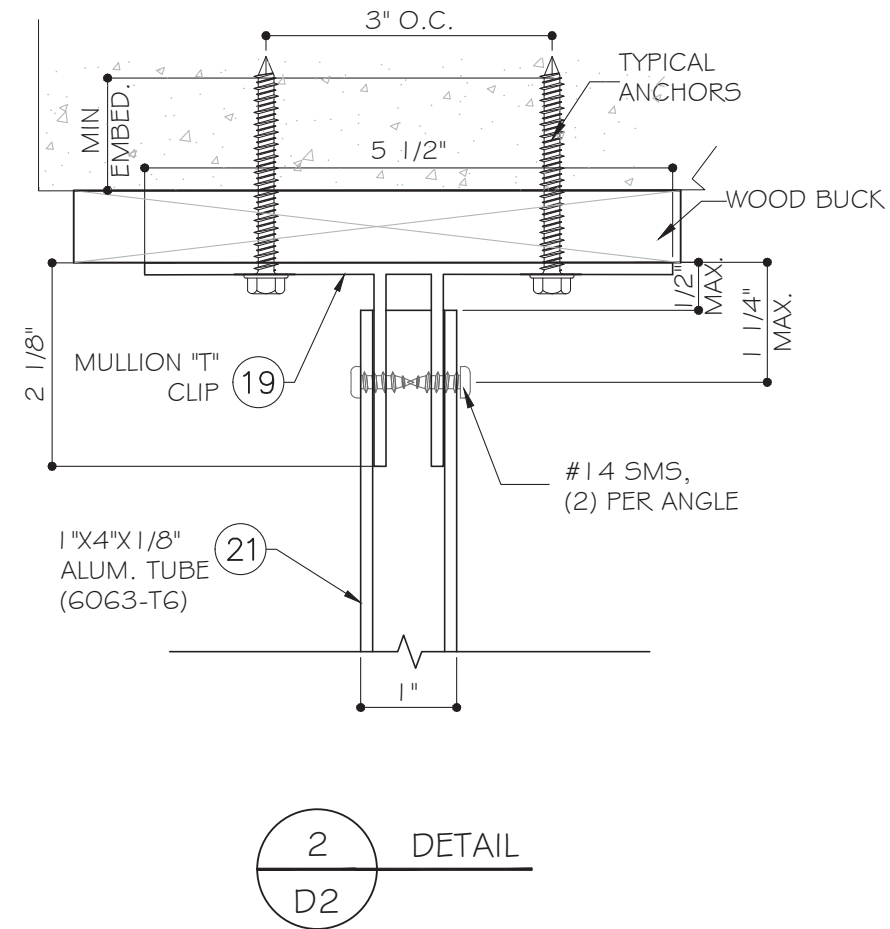
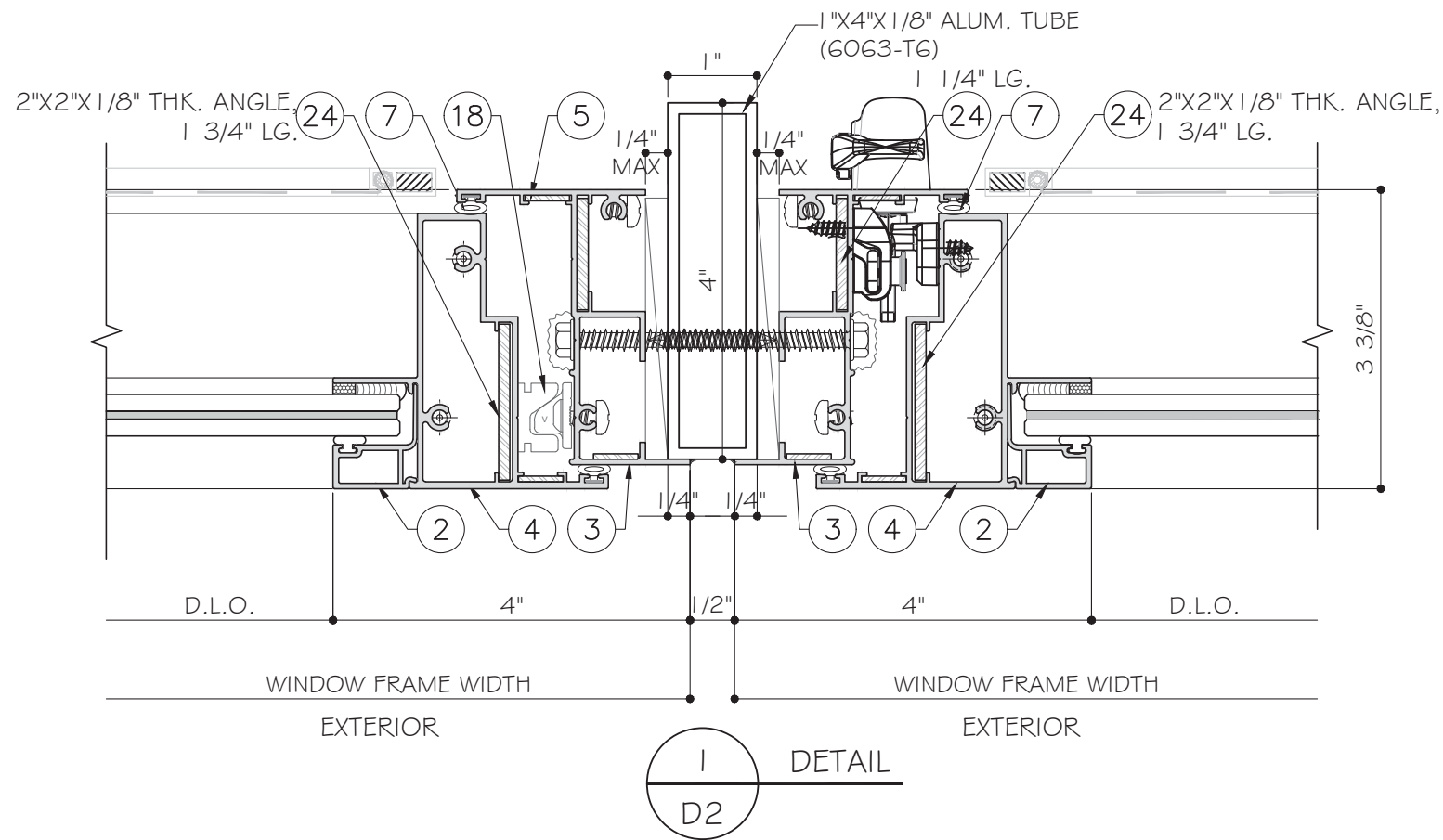
FLORIDA APPROVAL:
FL#35387



MCY ENGINEERING, INC.
GLAZING CONSULTANTS
12781 MIRAMAR PKWY., STE. 301
MIRAMAR, FL 33027 P: 305.271.0117
www.MCYEngineering.com mcy@mcyengineering.com

SERIES "CS 2100" ALUMINUM CASEMENT WINDOW - L.M.I.& S.M.I.
EMC WINDOWS AND DOORS, LLC.
1356 W. 76TH STREET
HIALEAH, FL 33014
TEL: (305) 283-6280 EMCWindowsDoors@gmail.com

Rev. No.	Date	Drawn By	Description
R3	09.25.2023	James	UPDATE FBC 2023
Drawn Date: 09.25.2023		Scale: AS SHOWN	
DRAWING NO. AD20-33			
Sheet No. 05 OF 10			



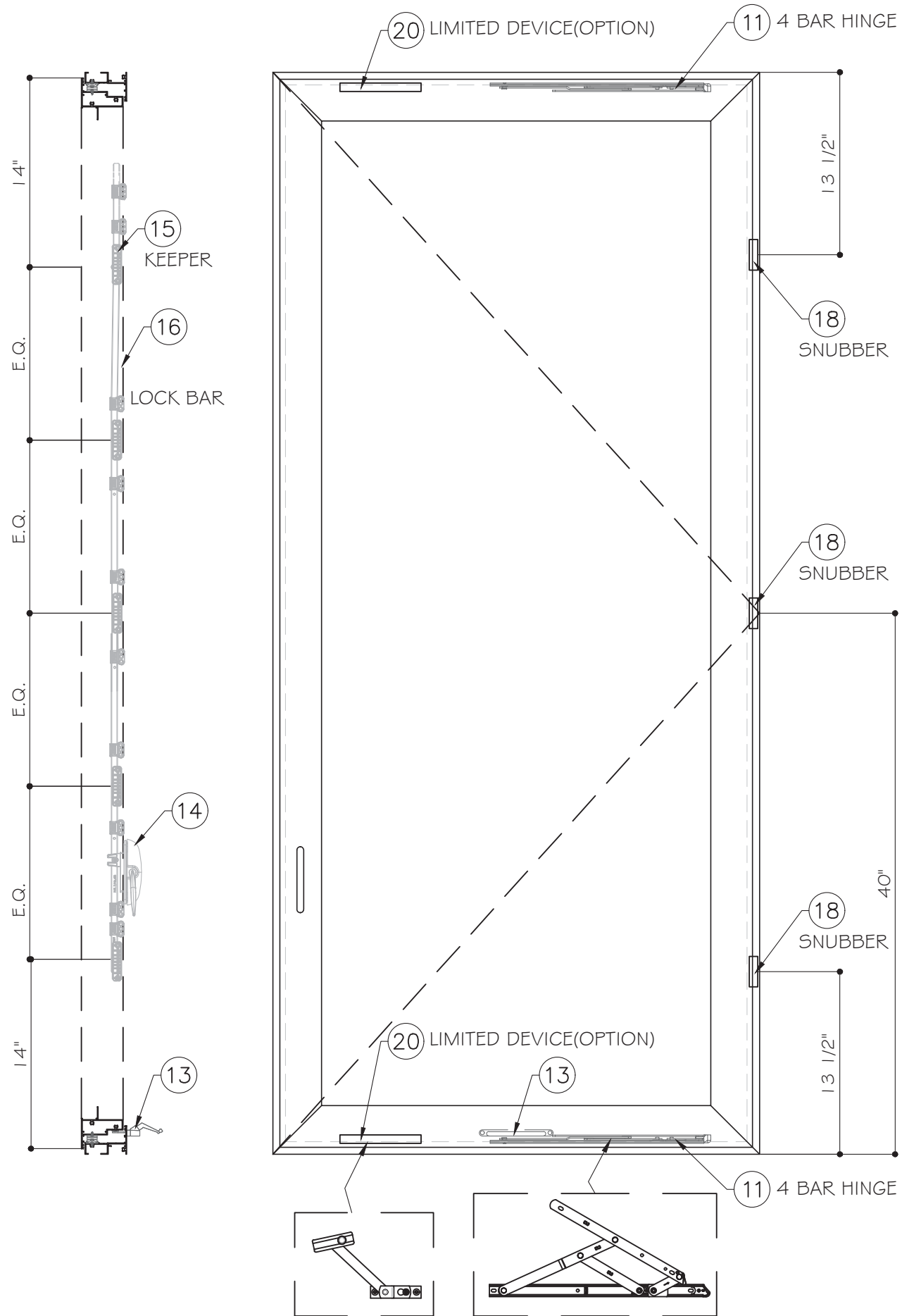
FLORIDA APPROVAL:
FL#35387



MCY ENGINEERING, INC.
GLAZING CONSULTANTS
12781 MIRAMAR PKWY., STE. 301
MIRAMAR, FL 33027 P: 305.271.0117
www.MCYEngineering.com mcy@mcyengineering.com

SERIES "CS 2100" ALUMINUM CASEMENT WINDOW - L.M.I. & S.M.I.
EMC WINDOWS AND DOORS, LLC.
1356 W. 76TH STREET
HIALEAH, FL 33014
TEL: (305) 283-6280 EMCWindowsDoors@gmail.com

Rev. No.	Date	Drawn By	Description
R3	09.25.2023	James	UPDATE FBC 2023
Drawn Date	09.25.2023	Scale	AS SHOWN
DRAWING NO. AD20-33			
Sheet No. D2			
06 OF 10			



KEEPERS:

(5) KEEPERS BY 'INTERLOCK-ASSA ABLOY' EACH ATTACHED W/ (2) #6 X 5/8 PFH SDS .

SNUBBER: (3) MATCHING PAIRS BY MONTICELLI AT FRAME AND THE VENT @ 7 1/4", 37" & 71 1/2" FROM THE INSIDE OPENING OF THE FRAME EACH ATTACHED W/ (2) #10 X 3/4" PFH SDS.

LOCK:

MULTIPOINT LOCK SYSTEM BY 'INTERLOCK-ASSA ABLOY' AT FRAME JAMB CLO2-0600 & CLO2-1020 LOCK & HANDLE WITH (2) #10 X 1/2" PFH THREAD FORMING SCREW B
 CLO2-2059 MULTIPOINT KEEPERS W/ (2) #6 X 5/8" PFH SDS
 CLO2-002 MULTIPOINT LOCK BAR W/ (6) MUSHROOM HEADS @ 15", 32 5/8", 44", 48", 55" & 62 1/2" FROM BOTTOM OF THE OPENING, EACH ATTACHED W/ (2)#10 X 1" PFH SMS.

HINGE:

SPSH 16 - CASEMENT 4 BAR ST/ST HINGE BY 'SECURISTYLE' W/ (3)#10 X 1" PFH SMS.

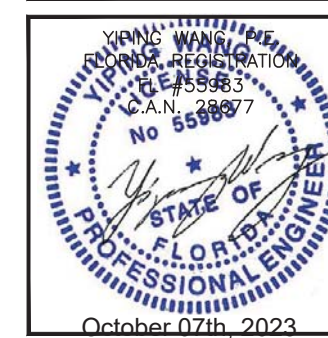
LIMITED DEVICE(OPTION):

LIMITED DEVICE-FRICTION ADJUSTERS BY 'CALDWELL'

OPERATOR:

23 SERIES SINGLE ARM OPERATOR BY 'TRUTH' W/ (8) # 10 X 1/2" PFH THREAD FORMING SCREW TYPE B.

FLORIDA APPROVAL:
 FL#35387

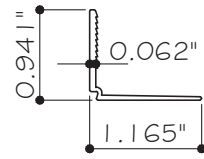


SERIES "CS 2100" ALUMINUM CASEMENT WINDOW - L.M.I.& S.M.I.
 EMC WINDOWS AND DOORS, LLC.
 1356 W. 76TH STREET
 HIALEAH, FL 33014
 TEL. (305) 283-6280 EMCWindowsDoors@gmail.com

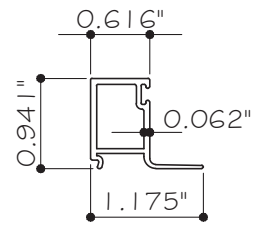
Rev. No.	Date	Drawn By	Description
R3	09.25.2023	James	UPDATE FBC 2023

Drawn Date: 09.25.2023
 Scale: AS SHOWN
 DRAWING NO. AD20-33
 Sheet No. 07 OF 10

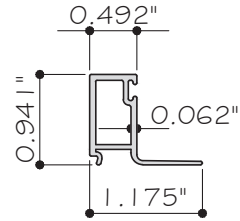
MCY ENGINEERING, INC.
 GLAZING CONSULTANTS
 12781 MIRAMAR PKWY. STE. 301
 MIRAMAR, FL 33027 P: 305.271.0117
 www.MCYEngineering.com mcy@mcyengineering.com



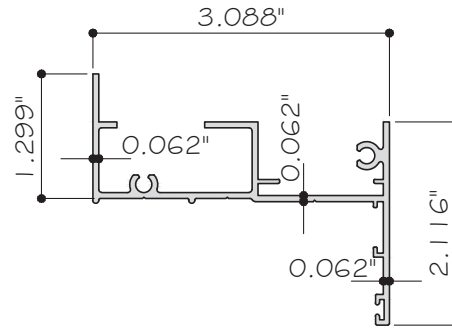
1a GLAZING BEAD
ALUMINUM 6063-T6



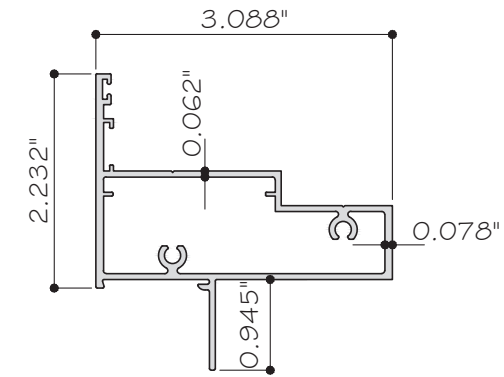
2 GLAZING BEAD
ALUMINUM 6063-T6



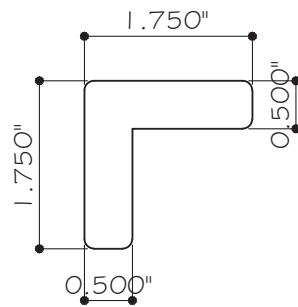
2a GLAZING BEAD
ALUMINUM 6063-T6



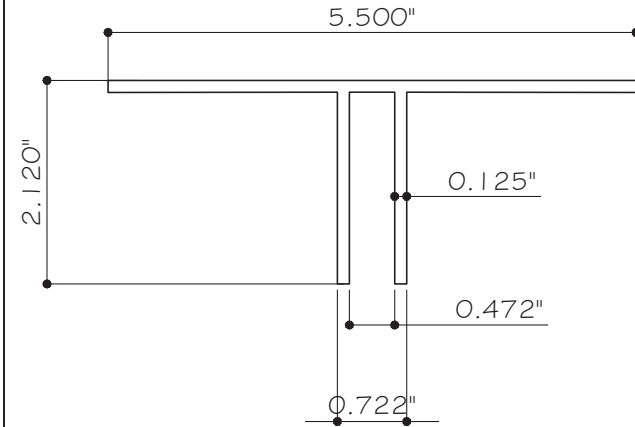
3 FRAME HEAD/SILL
ALUMINUM 6063-T6



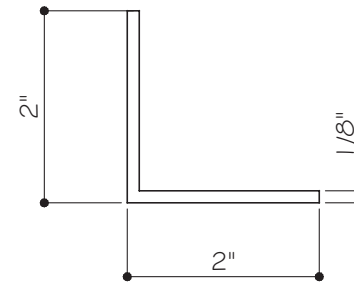
4 VENT
ALUMINUM 6063-T6



5 1/16" CORNER KEY
STAINLESS STEEL

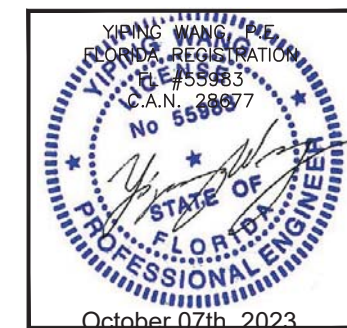


19 MULLION T CLIP
ALUMINUM 6063-T5



24 ALUM ANGLE
ALUMINUM 6063-T6

FLORIDA APPROVAL:
FL#35387



MCY ENGINEERING, INC.
GLAZING CONSULTANTS
12781 MIRAMAR PKWY., STE. 301
MIRAMAR, FL 33027 P: 305.271.0117
www.MCYEngineering.com mcy@mcyengineering.com

SERIES "CS 2100" ALUMINUM CASEMENT WINDOW - L.M.I.& S.M.I.
EMC WINDOWS AND DOORS, LLC.
1356 W. 76TH STREET
HIALEAH, FL 33014
TEL. (305) 283-6280 EMCWindowsDoors@gmail.com

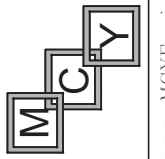
Rev. No.	Date	Drawn By	Description
R3	09.25.2023	James	UPDATE FBC 2023
Drawn Date		Scale	
09.25.2023		AS SHOWN	
DRAWING NO.			
AD20-33			
PARTS			
Sheet No.		08 OF 10	

BILL OF MATERIALS

ITEM	PART	DESCRIPTION	MATERIAL	MANUF. / REMARKS
1a	-	GLAZING BEAD FOR GLASS 'G2'#G4'	ALUM. 6063-T6	-
2	-	GLAZING BEAD FOR GLASS 'G1'	ALUM. 6063-T6	-
2a	-	GLAZING BEAD FOR GLASS 'G3'	ALUM. 6063-T6	-
3	-	FRAME HEAD/SILL	ALUM. 6063-T6	-
4	-	VENT	ALUM. 6063-T6	-
5	-	1/16" THK. CORNER KEY	STAINLESS STEEL	-
6	-	#10 X 1 1/4" SMS / FRAME AND VENT ASSEMBLY SCREWS	-	-
7	NO.3252B	BULB VINYL AIR SEAL GASKET(BLACK)	-	MELTPOINT PLASTICS
8	E202	VOO21 VINYL BULB, GLAZING STOP	VINYL	FENESTRATIONGLASS PRODUCTS
9	W0019	1/8 X 1/4 GLAZING TAPE, 2 SIDED	TAPE	FRANK LOWED
10	SEALO1-I	DOW 995 BACK SILICONE	SILICONE	-
11	-	4 BAR HINGE	STAINLESS STEEL	SECURISTYLE
12	-	CASEMENT OPERATOR TRACK	-	TRUTH HARDWARE
13	-	23 SERIES FACEMOUT CASEMENT OPERATOR	-	TRUTH HARDWARE
14	CLO2-0600 & CLO2-1020	LOCK HANDLE ASSEMBLY	-	INTERLOCK - ASSA ABLOY
15	CLO2-2059	(5) MULTIPOINT KEEPERS W/ (2) #6 X 5/8" FH SMS	-	INTERLOCK - ASSA ABLOY
16	CLO2-002	MULTIPOINT LOCK BAR	-	INTERLOCK - ASSA ABLOY
17	-	#8 X 1/2" S.S. PH SMS.	STAINLESS STEEL	-
18	-	SNUBBER	MONTICELLI	-
19	-	5 1/2" X 2 1/8" X 3.71" LONG. MULLION T CLIP	ALUM. 6063-T5	-
20	-	LIMITED DEVICE-FRICTION ADJUSTERS(OPTION)	STAINLESS STEEL	CALDWELL
21	-	1"x4"x1/8" ALUM. TUBE	ALUM. 6063-T6	-
22	-	CRL GRAY EDGETECH SUPER SPACER - GLASS SPACER	SILICONE FOAM	C.R. LAURENCE CO., INC.
23	-	SETTING BLOCK, 70+/- 5 DUROMETER.	EPDM	-
24	-	2"x2"x1/8" ALUM. ANGLE	ALUM. 6063-T6	-

MCY ENGINEERING, INC.
GLAZING CONSULTANTS

12781 MIRAMAR PKWY., STE. 301
MIRAMAR, FL 33027 P: 305.271.0117
www.MCYEngineering.com mcy@mcyengineering.com

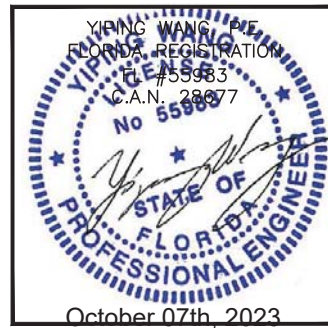


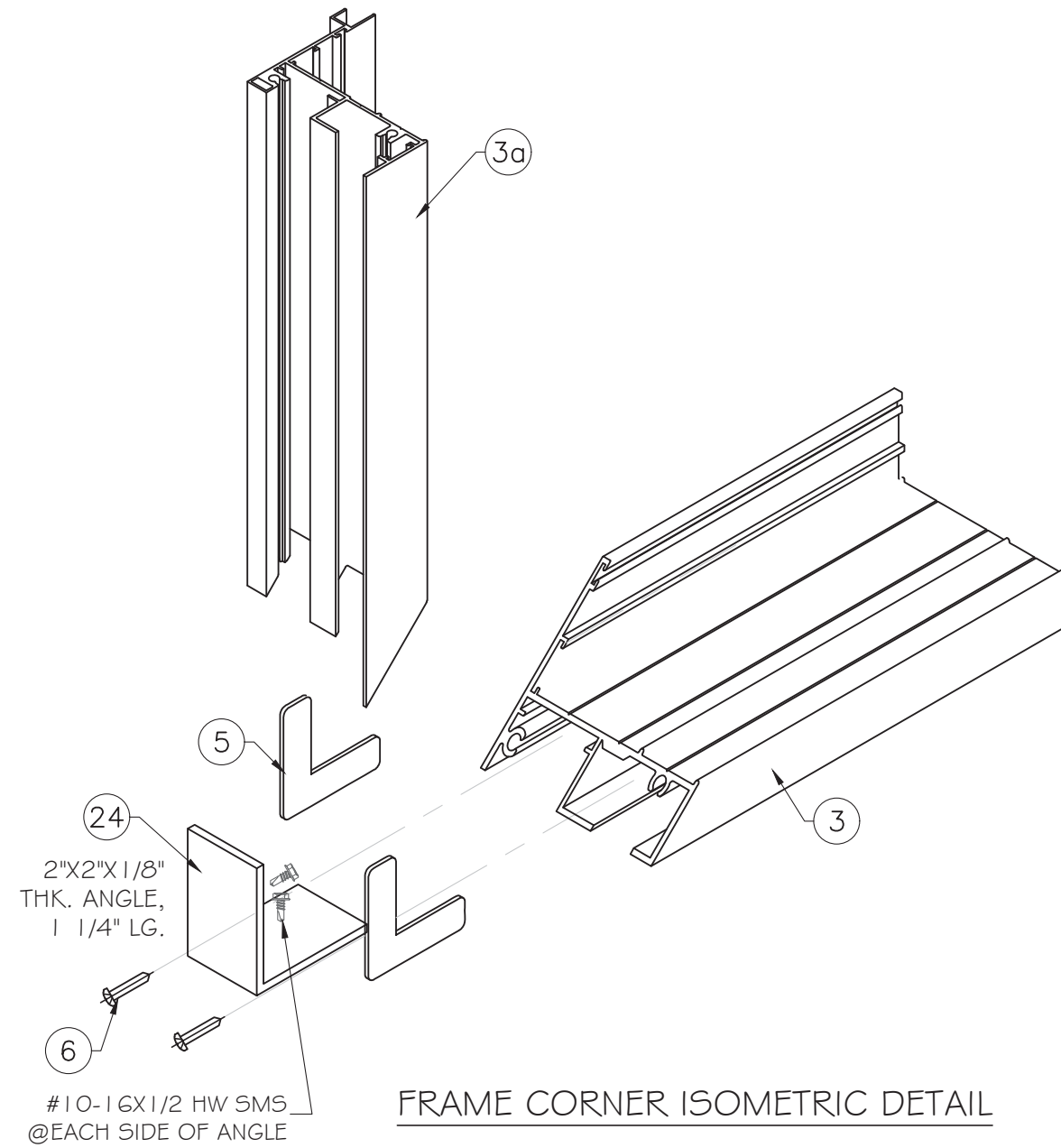
SERIES 'CS 2100' ALUMINUM CASEMENT WINDOW - L.M.I.& S.M.I.

EMC WINDOWS AND DOORS, LLC.
1356 W. 76TH STREET
HIALEAH, FL 33014
TEL. (305) 283-6280 EMCWindowsDoors@gmail.com

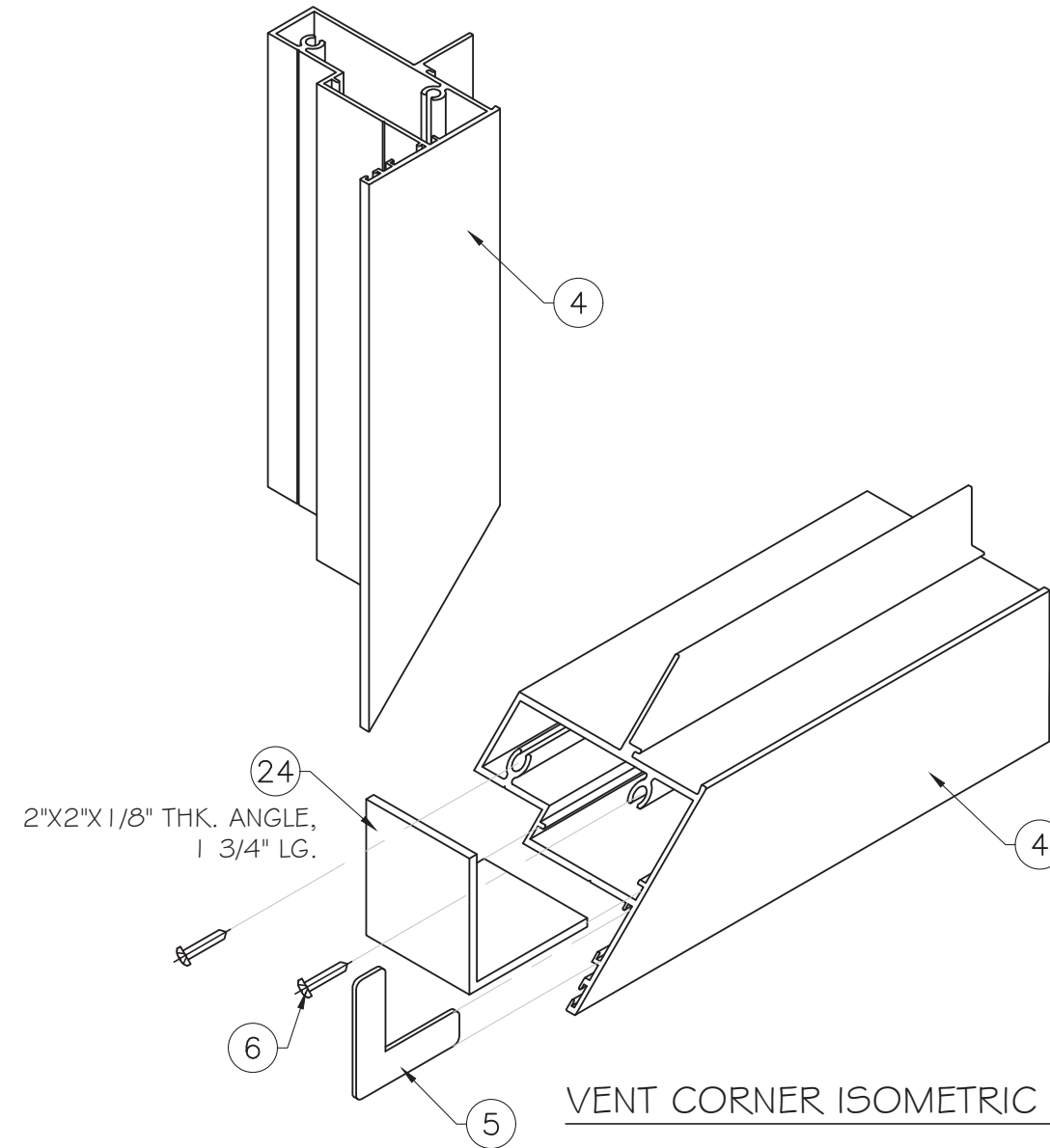
Drawn Date	Scale	Rev. No.	Date	Drawn By	Description
09.25.2023	AS SHOWN		09.25.2023	James	UPDATE FBC 2023
DRAWING NO. AD20-33					
BOM					
Sheet No. 09 OF 10					

FLORIDA APPROVAL:
FL#35387





FRAME CORNER ISOMETRIC DETAIL



VENT CORNER ISOMETRIC DETAIL

FLORIDA APPROVAL:
FL#35387

YIPING WANG
FLORIDA REGISTRATION
FL#35387
C.A.N. 28077
No 55989
STATE OF FLORIDA
PROFESSIONAL ENGINEER
October 07th, 2023

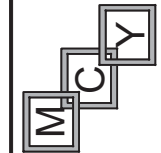
SERIES "CS 2100" ALUMINUM CASEMENT WINDOW - L.M.I.& S.M.I.

EMC WINDOWS AND DOORS, LLC.

1356 W. 76TH STREET

HIALEAH, FL 33014

TEL. (305) 283-6280 EMCWindowsDoors@gmail.com



MCY ENGINEERING, INC.
GLAZING CONSULTANTS

12781 MIRAMAR PKWY. STE. 301
MIRAMAR, FL 33027

P: 305.271.0117

www.MCYEngineering.com mcy@mcyengineering.com

Rev. No.	Date	Drawn By	Description
R3	09.25.2023	James	UPDATE FBC 2023
Drawn Date	Scale	DRAWING NO.	
09.25.2023	AS SHOWN	AD20-33	
Sheet No.			
10 OF 10			