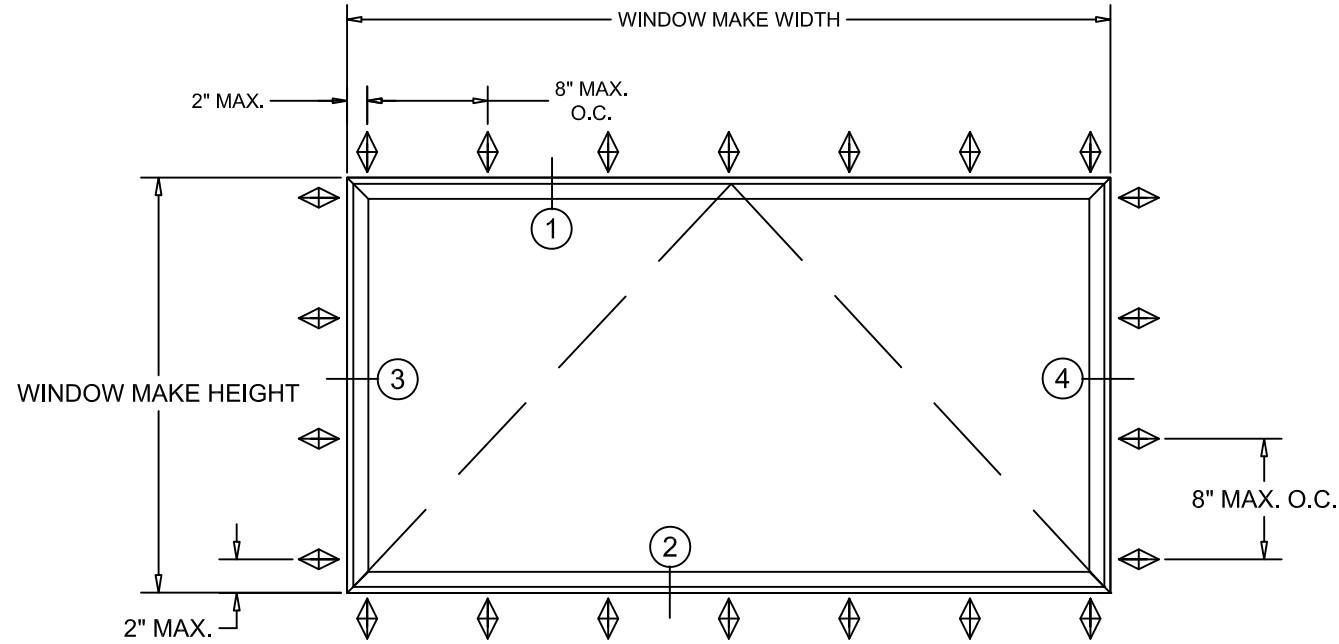


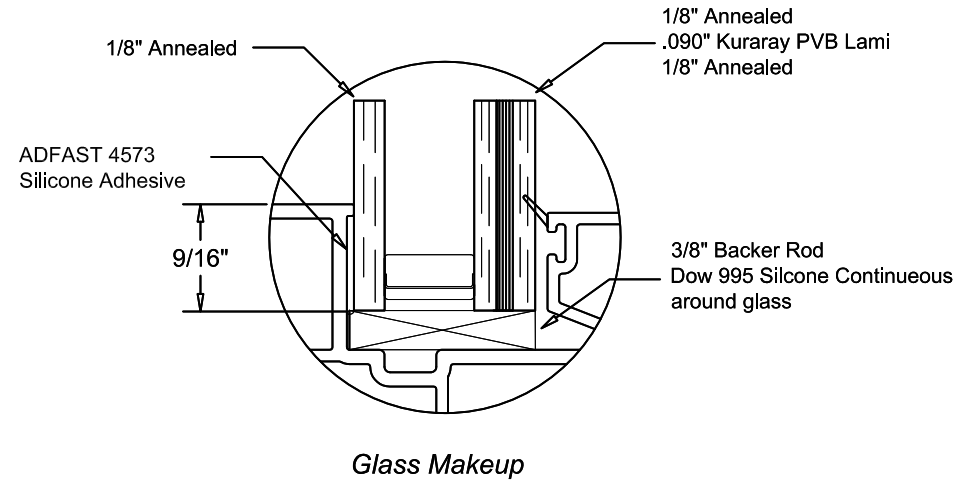
NOTE: TYPICAL V700 AWNING VINYL IMPACT WINDOW - INSTALLATION INSTRUCTIONS



Maximum				
FW	FH	DLO-W	DLO-H	Pressure
48"	32"	41 1/2"	25 1/8"	± 50 PSF

Notes:

1. Installations depicted satisfy the requirements of the 8th Edition (2023) of the Florida Building Code for Wind Pressures and Overall Sizes shown.
2. As Tested Anchor spacings are shown on the Elevations.
3. Wood Framing are assumed to Southern Pine (G=0.55) or denser.
4. Metal stud frames are assumed to be a minimum 16 gauge 33 KSI Steel.
5. Concrete masonry (CMU) shall conform to ASTM C90.
6. Concrete shall be minimum $f_c = 3,000$ psi.
7. Wood Screws shall meet requirements of ANSI/ASME B18.6.1.
8. TEKS screws shall be ASTM A510 Grade 1018 or equivalent.
9. Hilti Kwik-Con+ anchors as specified in NOA 21-0628.20
10. Maximum Frame Shim Space is $\frac{1}{4}$ " as shown. Shims shall be non-compressible load bearing type.
11. Exterior and Interior shall be sealed according to Shop Drawings.
12. Products are Impact Resistant, ASTM E 1996 Wind Zone 4, and do not require an approved protection device in windborne debris regions.
13. Not for use in High Velocity Hurricane Zone (HVHZ).



7/26/2023
 LUCAS TURNER
 FL PE 58201
 TURNER ENGINEERING &
 CONSULTING, INC.
 2428 OLD NATCHEZ TRACE TRL.
 CAMDEN, TN, 38320
 PH 941-380-1574

Project Name:
V700 Awning

Installation Instructions

GENERAL NOTES

QUAKER WINDOW PRODUCTS
 WILL NOT BE RESPONSIBLE
 FOR FIELD MEASUREMENT,
 QUANTITIES, & INSTALLATION
 DESIGN. CONTRACTOR MUST
 VERIFY ALL DIMENSIONS.

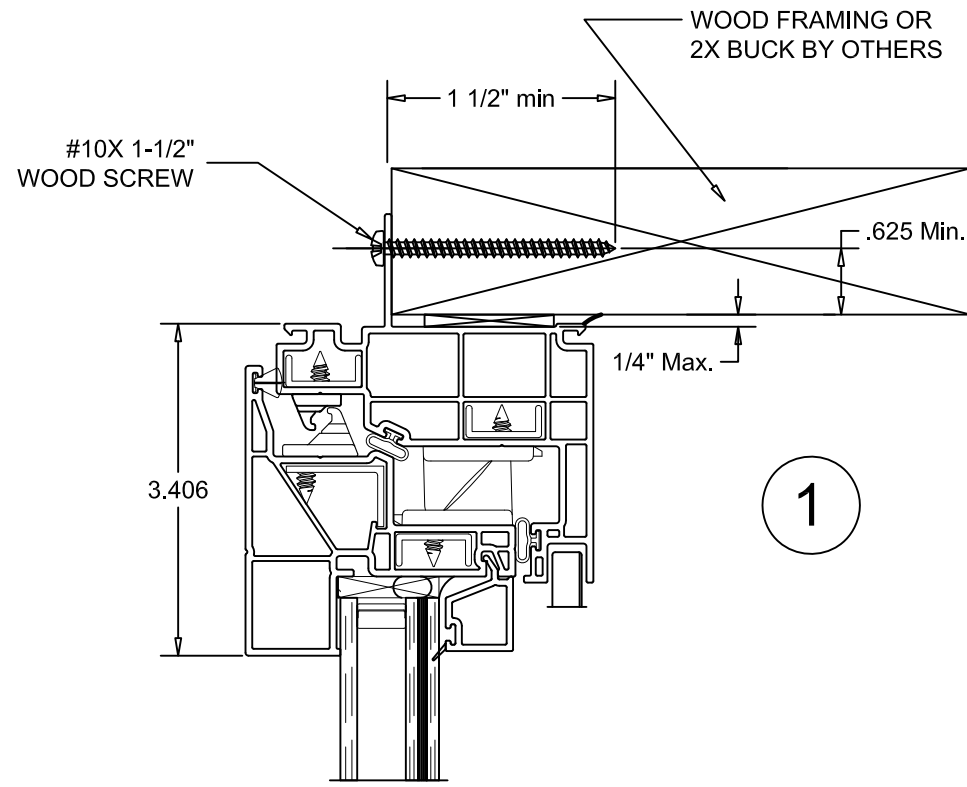
PHONE (573)-744-5211
 FAX (573)-744-5586
 COMMERCIAL
 FAX (573)-744-5822
 www.quakerwindows.com

Scale: NONE
 Sheet #: 1 of 5

Drawn By: Bud
 Date: 07-10-2023

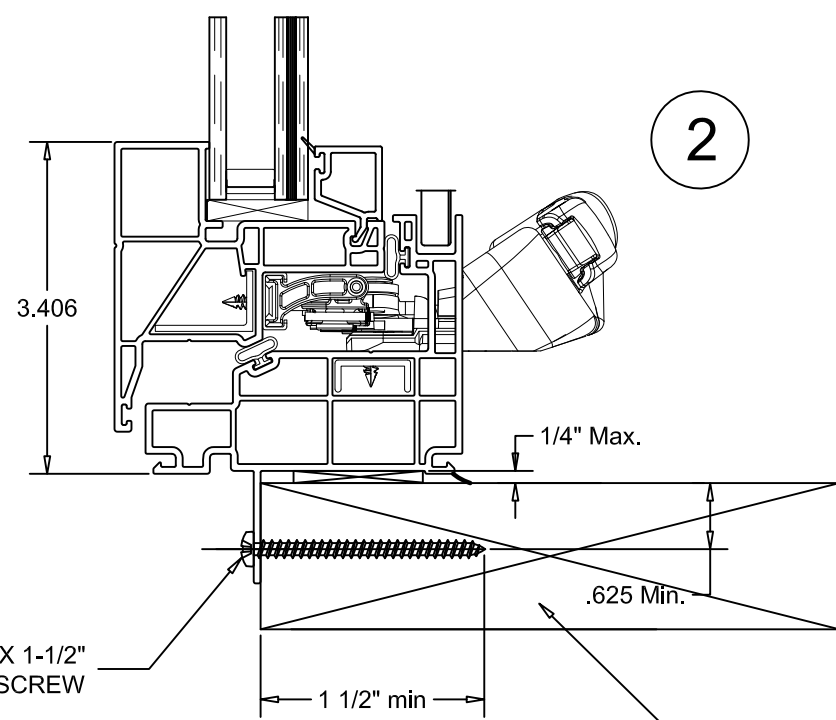


NOTE: TYPICAL V700 AWNING VINYL IMPACT WINDOW - NAIL FIN INSTALLATION



1

EXTERIOR INTERIOR



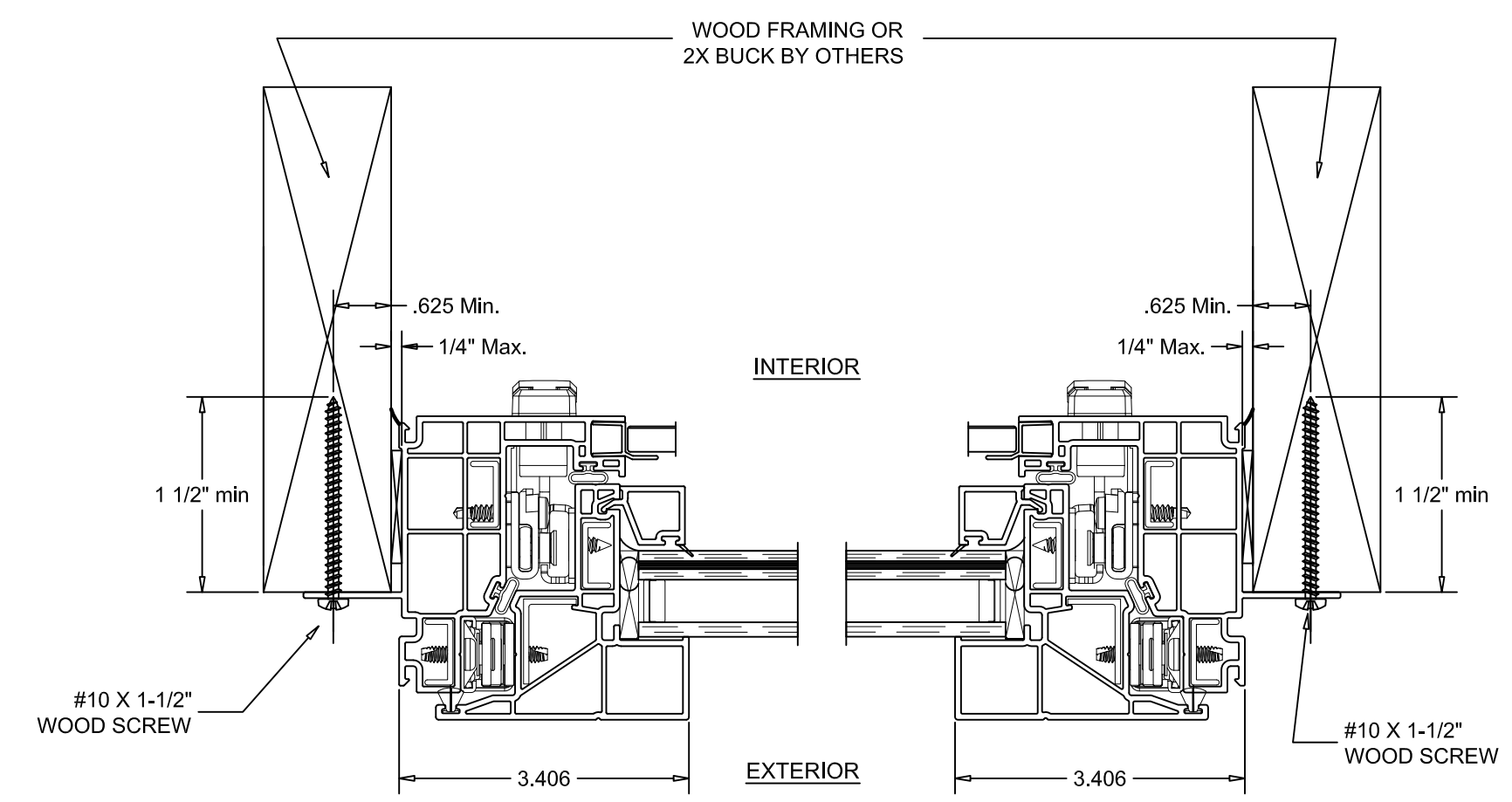
2

#10 X 1-1/2" WOOD SCREW
WOOD FRAMING OR 2X BUCK BY OTHERS
1 1/2" min
.625 Min.
1/4" Max.

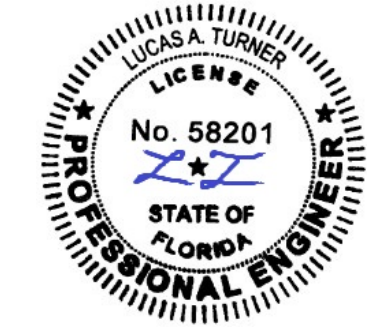
VERTICAL SECTION DETAIL
WOOD FRAMING INSTALLATION

3

4



HORIZONTAL SECTION DETAIL
WOOD FRAMING INSTALLATION



7/26/2023
LUCAS TURNER
FL PE 58201
TURNER ENGINEERING &
CONSULTING, INC.
2428 OLD NATCHEZ TRACE TRL.
CAMDEN, TN, 38320
PH 941-380-1574

Project Name:

GENERAL NOTES

QUAKER WINDOW PRODUCTS
WILL NOT BE RESPONSIBLE
FOR FIELD MEASUREMENT
QUANTITIES, & INSTALLATION
DESIGN. CONTRACTOR MUST
VERIFY ALL DIMENSIONS.

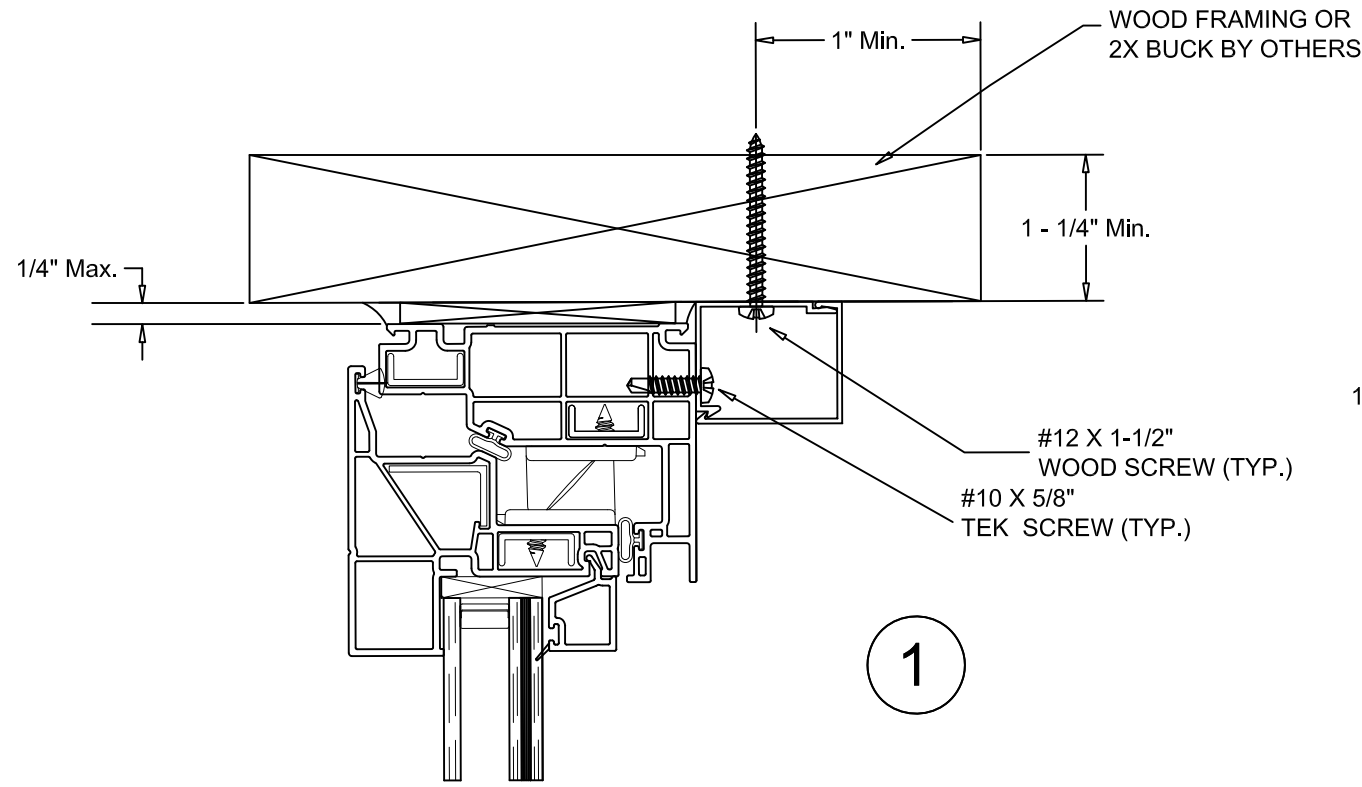
Description:



PHONE (573)-744-5211
FAX (573)-744-5586
COMMERCIAL
FAX (573)-744-5822
www.quakerwindows.com
Scale: NONE
Sheet #: 2 of 5
504 Highway 63 South
Freeburg, MO 65035
drafting@quakerwindows.com
Drawn By: Bud
Date: 07-10-2023

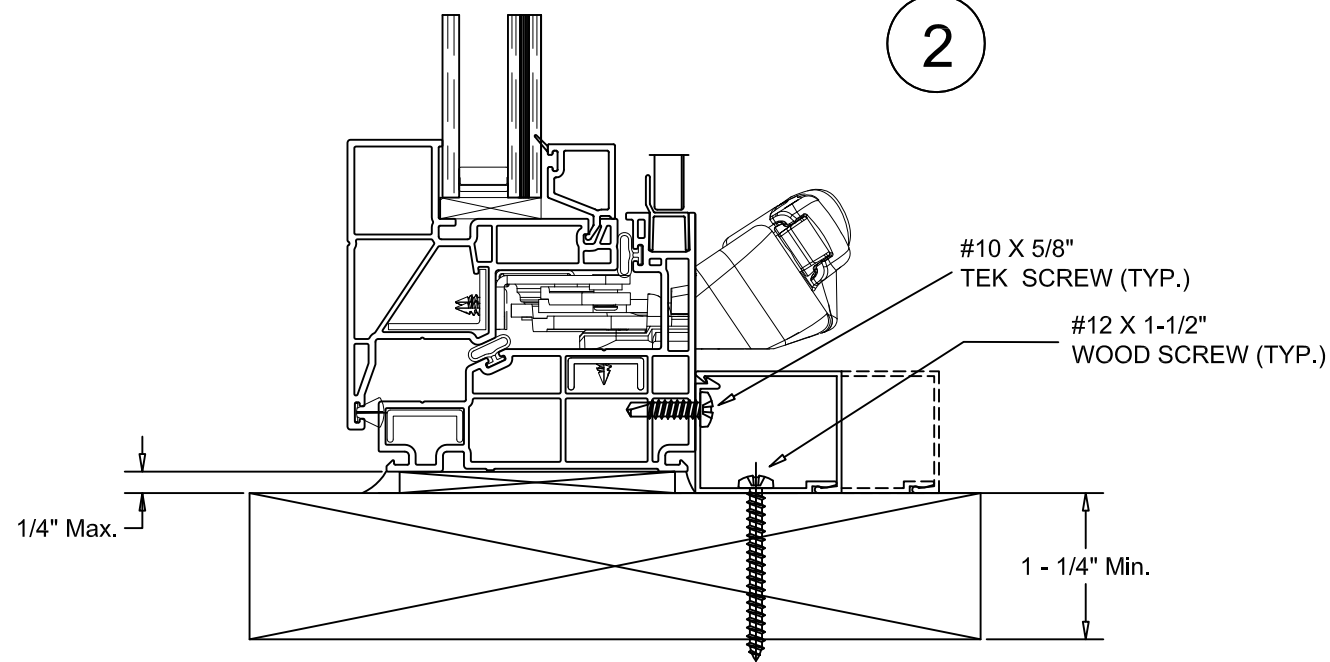
V700 Awning
NAIL FIN
Installation Instructions

NOTE: TYPICAL V700 AWNING VINYL IMPACT WINDOW - TRIM & CLIP



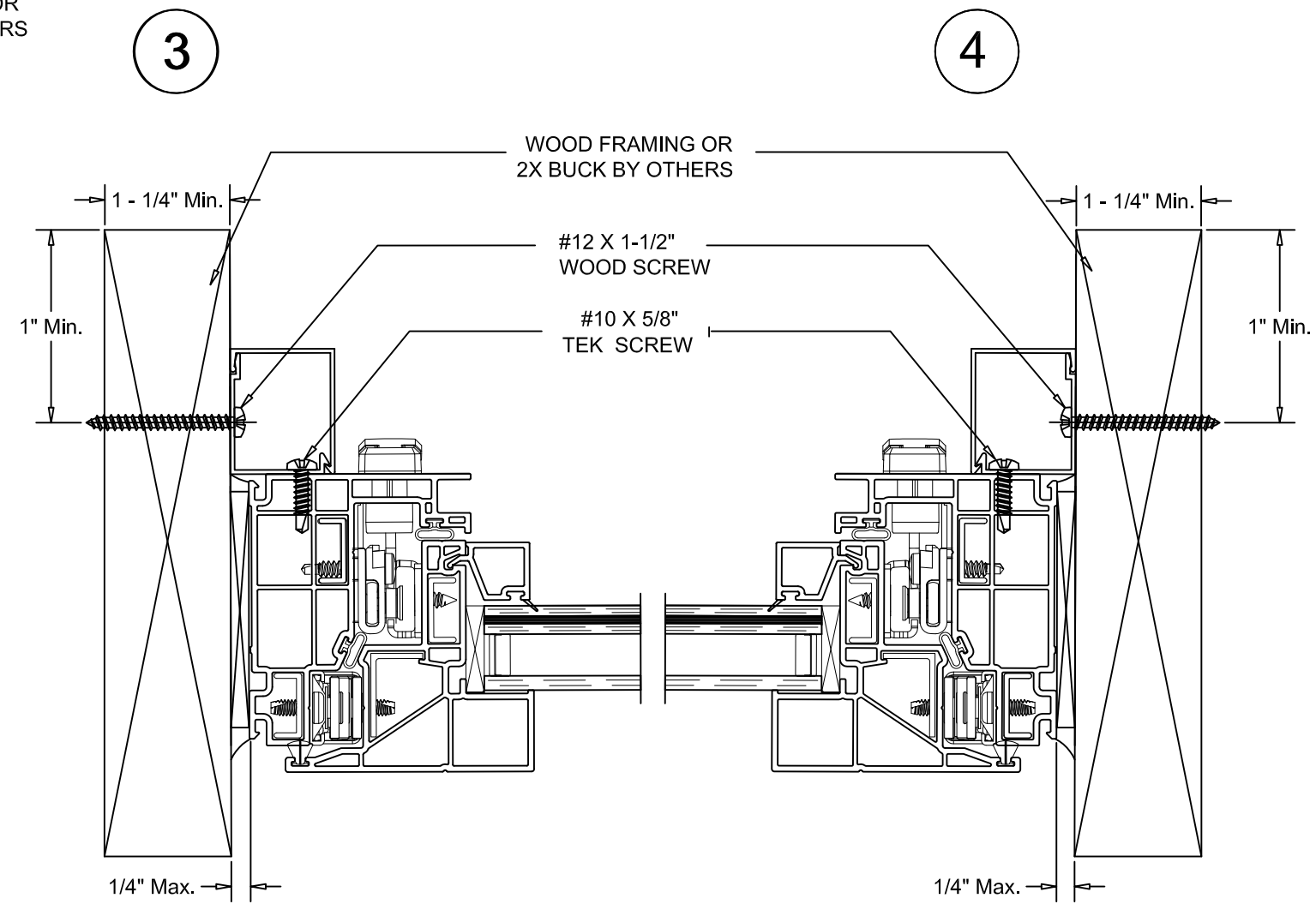
EXTERIOR

INTERIOR



VERTICAL SECTION DETAIL

WOOD FRAMING INSTALLATION



HORIZONTAL SECTION DETAIL

WOOD FRAMING INSTALLATION



7/26/2023
 LUCAS TURNER
 FL PE 58201
 TURNER ENGINEERING &
 CONSULTING, INC.
 2428 OLD NATCHEZ TRACE TRL.
 CAMDEN, TN, 38320
 PH 941-380-1574

V700 AWNING
 Trim & Clip

Installation Instructions

Project Name:

GENERAL NOTES

QUAKER WINDOW PRODUCTS
 WILL NOT BE RESPONSIBLE
 FOR FIELD MEASUREMENT
 QUANTITIES, & INSTALLATION
 DESIGN. CONTRACTOR MUST
 VERIFY ALL DIMENSIONS.

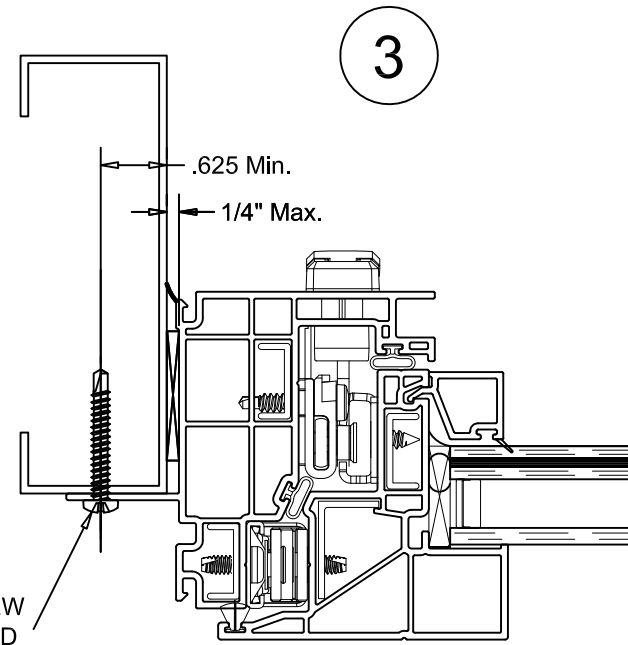
PHONE (573)-744-5211
 FAX (573)-744-5586
 COMMERCIAL
 www.quakerwindows.com
 Scale: NONE
 Sheet #: 3 of 5



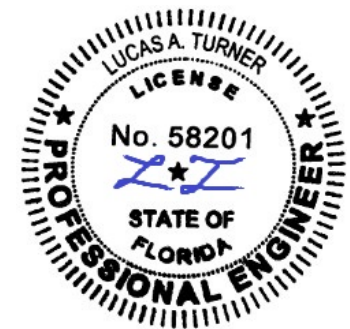
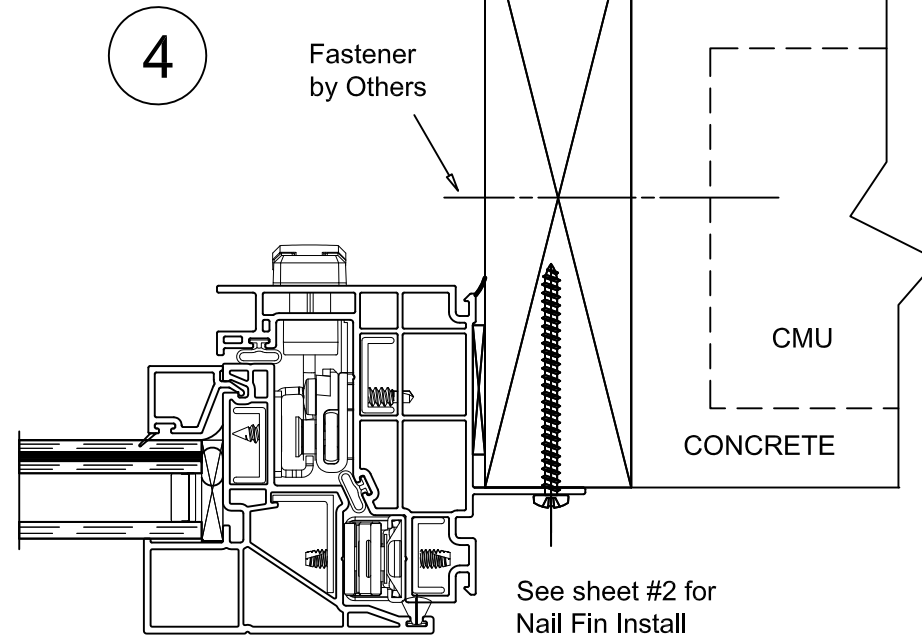
Drawn By: Bud
 Date: 07-10-2023

504 Highway 63 South
 Freeburg, MO 65035
 drafting@quakerwindows.com

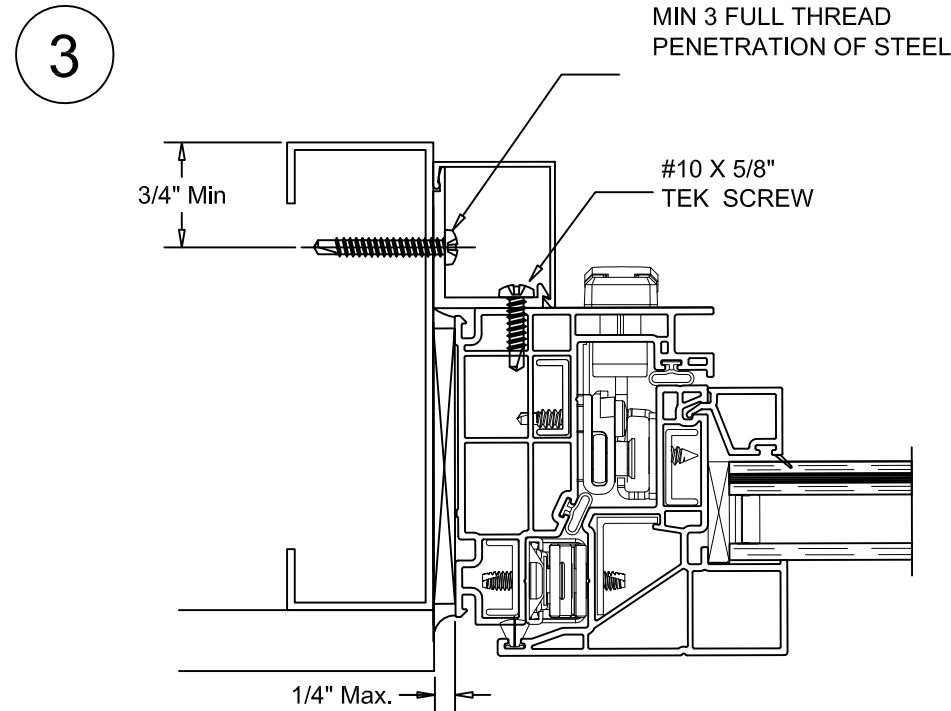
NOTE: TYPICAL V700 AWNING VINYL IMPACT WINDOW - ALTERNATE SUBSTRATS



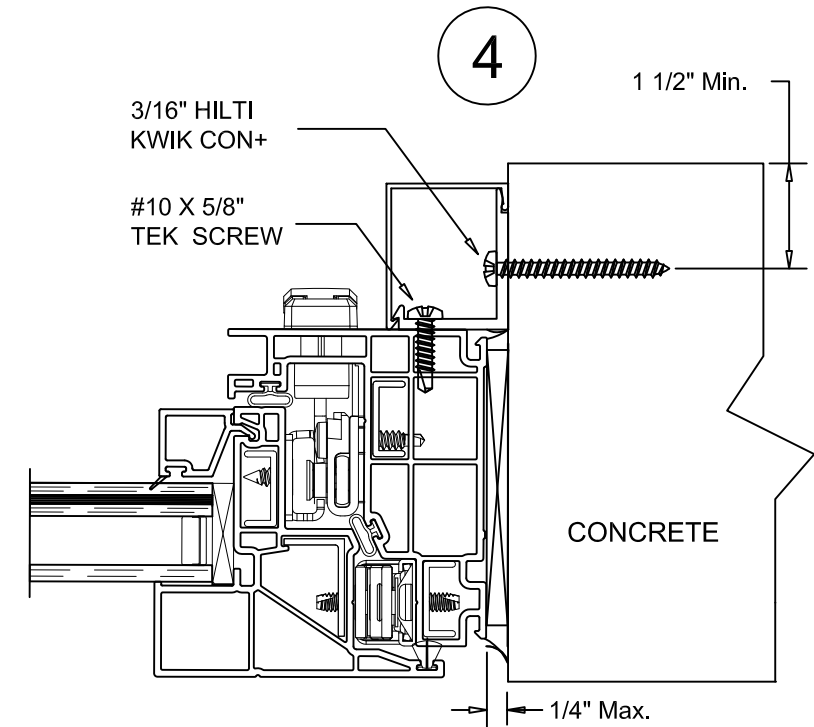
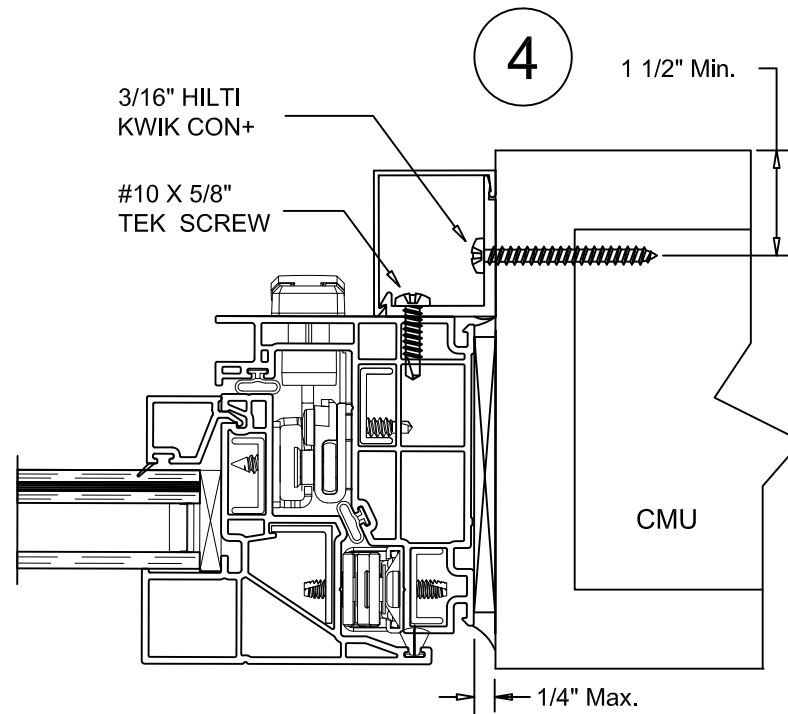
#10-16 TEKS SCREW
MIN 3 FULL THREAD
PENETRATION OF STEEL



7/26/2023
LUCAS TURNER
FL PE 58201
TURNER ENGINEERING &
CONSULTING, INC.
2428 OLD NATCHEZ TRACE TRL.
CAMDEN, TN, 38320
PH 941-380-1574



#10-16 TEKS SCREW
MIN 3 FULL THREAD
PENETRATION OF STEEL



GENERAL NOTES

V700 AWNING
ALTERNATE SUBSTRATS
Installation Instructions

Project Name:

Description:

PHONE (573)-744-5211
FAX (573)-744-5586
COMMERCIAL
www.quakerwindows.com



Scale: NONE
Sheet #: 4 of 5

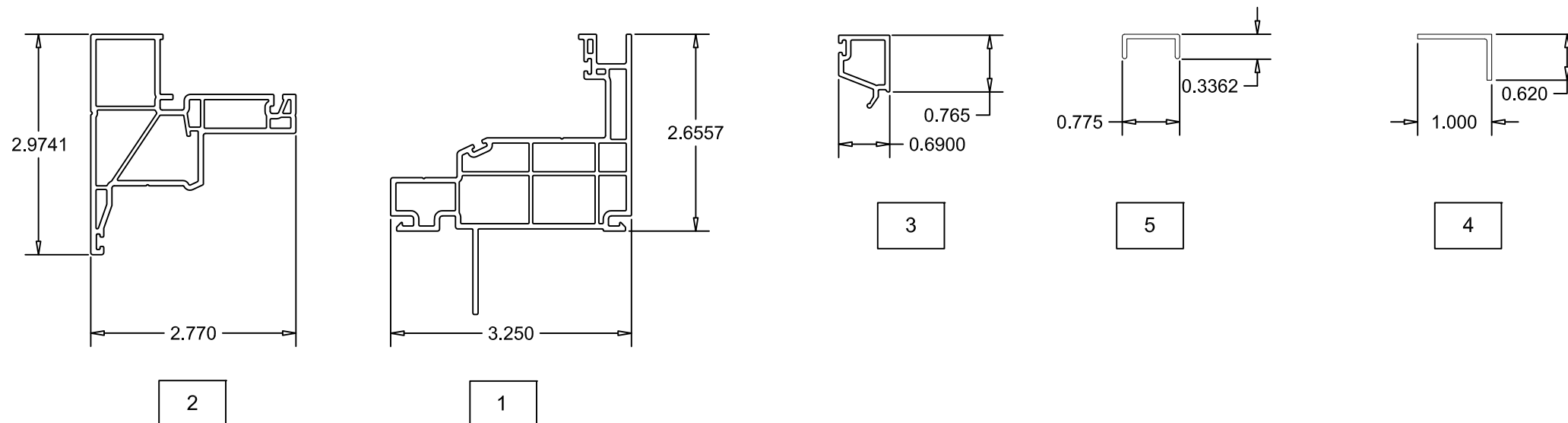
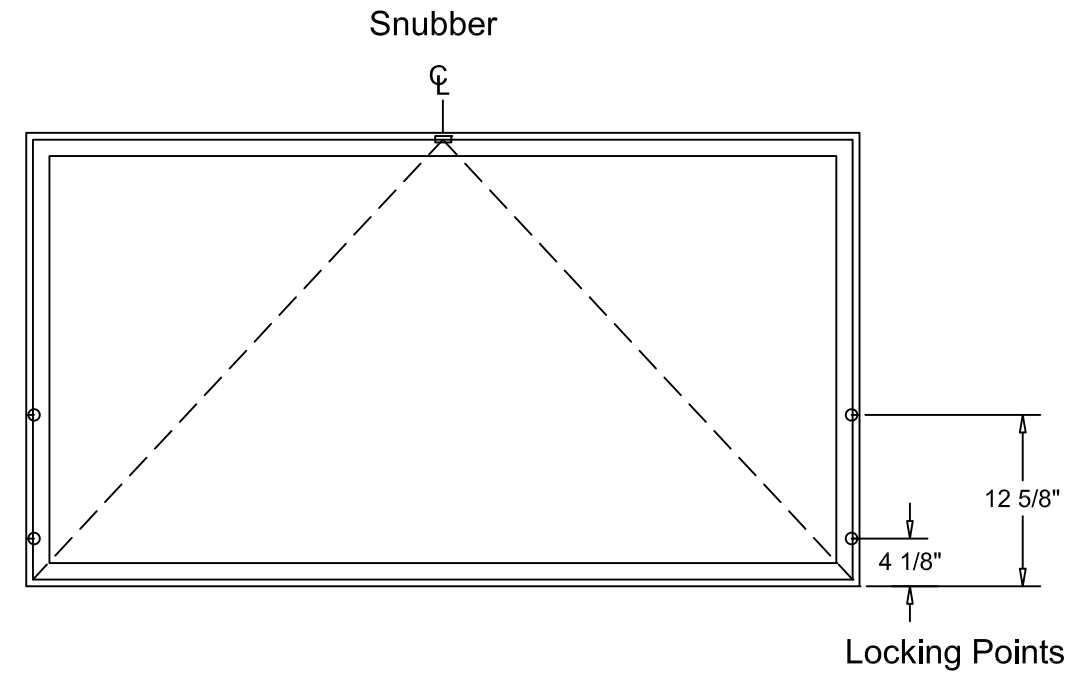
504 Highway 63 South
Freeburg, MO 65035
drafting@quakerwindows.com

Bud
Date: 07-10-2023

QUAKER WINDOW PRODUCTS
WILL NOT BE RESPONSIBLE
FOR FIELD MEASUREMENT
QUANTITIES, & INSTALLATION
DESIGN. CONTRACTOR MUST
VERIFY ALL DIMENSIONS.

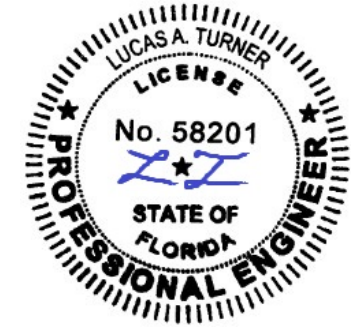
NOTE: TYPICAL V700 AWNING VINYL IMPACT WINDOW

Bill of Materials				
NO.	Description	Part Number	Material	Manufacturer
1	Frame	VS696	Rigid PVC	Royal Extrusions
2	Sash	VS697	Rigid PVC	Royal Extrusions
3	Glazing Bead	VS699	Rigid / Flex PVC	Royal Extrusions
4	Reinforcement Angle	M7596	Aluminum 6061-T6	Tower Extrusions
5	Reinforcement Channel	M21391	Aluminum 6063-T6	Tower Extrusions
6	Backbedding	4573	Silicone	ADFAST
7	Structural Sealant	Dow Corning 995	Silicone	Dow Corning
8	Maxim MP Lock Assy	24-43-02-001		Truth
9	Tie-Bar 2pt	14579-92		Truth
10	Keeper	24081-93		Truth
11	4-Bar Awning Hinge 16"	216LH		Advantage Hardware
12	Snubber	1500		Truth
13	Awning Operator	51-10-00-111		Truth



GENERAL NOTES

QUAKER WINDOW PRODUCTS WILL NOT BE RESPONSIBLE FOR FIELD MEASUREMENT QUANTITIES, & INSTALLATION DESIGN. CONTRACTOR MUST VERIFY ALL DIMENSIONS.



7/26/2023
LUCAS TURNER
FL PE 58201
TURNER ENGINEERING & CONSULTING, INC.
2428 OLD NATCHEZ TRACE TRL.
CAMDEN, TN, 38320
PH 941-380-1574

PHONE (573)-744-5211
FAX (573)-744-5586
COMMERCIAL
FAX (573)-744-5822
www.quakerwindows.com

Scale: NONE
Sheet #: 5 of 5

504 Highway 63 South
Freeburg, MO 65035
drafting@quakerwindows.com

Drawn By: Bud
Date: 07-10-2023

Project Name: V700 AWNING

Extrusions - HDW - Locations
Installation Instructions