

# FOUR SEASONS SOLAR PRODUCTS

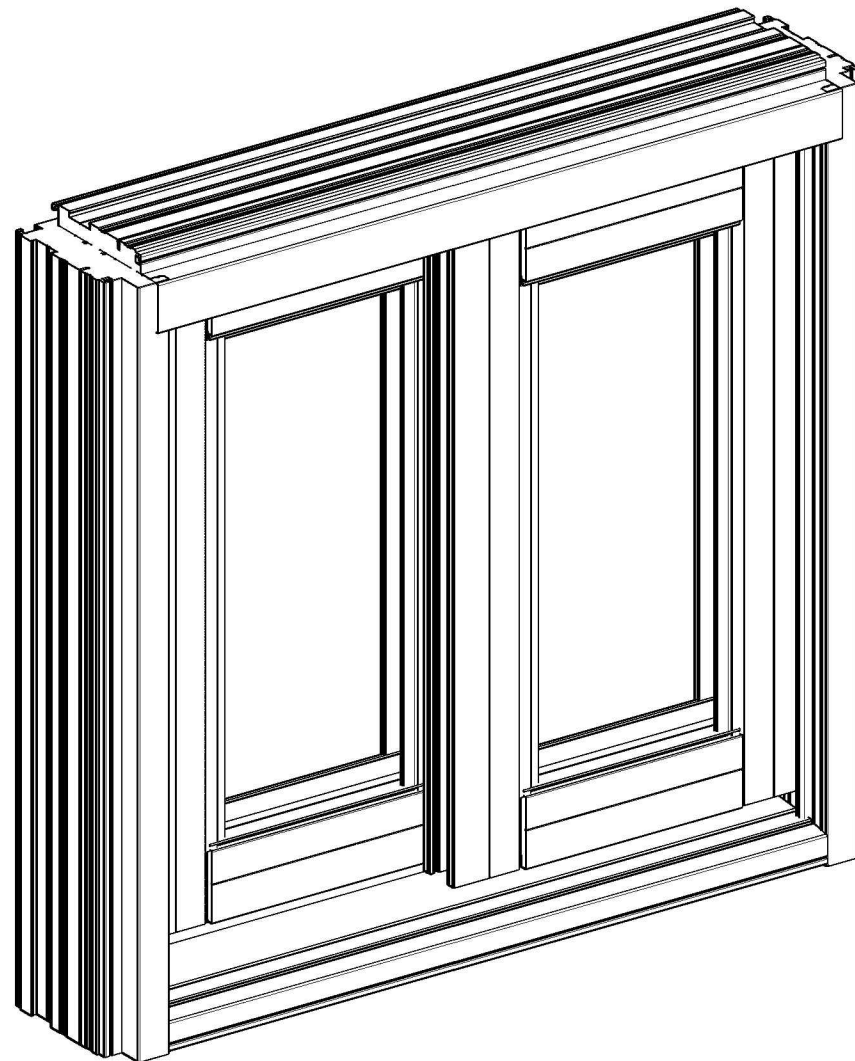
## SERIES FSSW8000 PVC HORIZONTALLY SLIDING WINDOW (NON-IMPACT)

### INCASE INSTALLED IN SUNROOM (ENGINEERED BY OTHERS):

- FOR USE IN NON-HABITABLE SUNROOMS ONLY AS DESCRIBED IN AAMA/NPEA/NSA 2100.
- SYSTEM TO BE USED AS AN AAMA 2100 CATEGORY I-IV ONLY & AS PER FBC 2002.6.
- THE HOST STRUCTURE IS NOT TO BE MODIFIED WITH THE ADDITION OF THIS UNIT/SUNROOM.
- FOR USE AS A CATEGORY IV SUNROOM IF SYSTEM MEETS THERMAL PERFORMANCE AS DESCRIBED IN SECTION 7 IN AAMA/NPEA/NSA 2100.
- SHALL BE INSTALLED INTO SEPARATELY ENGINEERED FOUR SEASONS ALUMINUM SUNROOM.

### INCASE INSTALLED IN VARIABLE SUBSTRATE:

- SEE SHEET 7 FOR FASTENER AND SUBSTRATE REQUIREMENTS.



### GENERAL NOTES:

1. THIS SYSTEM AND GLASS TYPES DESCRIBED HEREIN COMPLY AND HAVE BEEN DESIGNED AND TESTED IN ACCORDANCE WITH THE FLORIDA BUILDING CODE SEVENTH EDITION (2020) PER
  - a. ASTM E 283, ASTM E 330
  - b. AAMA/WDMA/CSA 101/I.S.2/A440-11
2. SITE-SPECIFIC REQUIRED DESIGN PRESSURES SHALL BE CALCULATED BY A LICENSED PROFESSIONAL ENGINEER FOR USE WITH THIS DOCUMENT PER CURRENT ADOPTED EDITION OF ASCE 7 AND WITH LOCAL CODE REQUIREMENTS.
3. THIS SYSTEM IS NON-IMPACT, NON-HVHZ RATED.
4. DESIGN PRESSURES NOTED HEREIN ARE BASED ON MAXIMUM TESTED PRESSURES DIVIDED BY A 1.5 SAFETY FACTOR.
5. NO 33-1/3% INCREASE IN ALLOWABLE STRESS HAS BEEN USED IN THE DESIGN OF THIS SYSTEM. WIND LOAD DURATION FACTOR Cd=1.6 HAS BEEN USED FOR WOOD ANCHOR DESIGN.
6. THE ARCHITECT/ENGINEER OF RECORD FOR THE PROJECT SUPERSTRUCTURE WITH WHICH THIS DESIGN IS USED SHALL BE RESPONSIBLE FOR THE INTEGRITY OF ALL SUPPORTING SURFACES TO THIS DESIGN WHICH SHALL BE COORDINATED BY THE PERMITTING CONTRACTOR. WOOD BUCKS (BY OTHERS) SHALL BE ANCHORED PROPERLY TO TRANSFER LOADS TO THE EXISTING STRUCTURE.
7. THE SYSTEM DETAILED HEREIN IS GENERIC AND DOES NOT PROVIDE INFORMATION FOR A SPECIFIC SITE. FOR SITE CONDITIONS DIFFERENT FROM THE CONDITIONS DETAILED HEREIN, A LICENSED ENGINEER OR REGISTERED ARCHITECT SHALL PREPARE SITE SPECIFIC DOCUMENTS FOR USE IN CONJUNCTION WITH THIS DOCUMENT.
8. THE CONTRACTOR IS RESPONSIBLE TO INSULATE ALL MEMBERS FROM DISSIMILAR MATERIALS TO PREVENT ELECTROLYSIS.
9. FASTENERS SHALL BE CADMIUM-PLATED OR OTHERWISE CORROSION-RESISTANT MATERIAL AND SHALL COMPLY WITH "SPECIFICATIONS FOR ALUMINUM STRUCTURES" SECTION J.3.7.2 BY THE ALUMINUM ASSOCIATION, INC., & ANY APPLICABLE FEDERAL, STATE, AND/OR LOCAL CODES
10. ENGINEER SEAL AFFIXED HERE TO VALIDATES STRUCTURAL DESIGN AS SHOWN ONLY. USE OF THIS SPECIFICATION BY CONTRACTOR, et. al. INDEMNIFIES & SAVES HARMLESS THIS ENGINEER FOR ALL COST & DAMAGES INCLUDING LEGAL FEES & APPELLATE FEES RESULTING FROM MATERIAL FABRICATION, SYSTEM ERECTION, & CONSTRUCTION PRACTICES BEYOND THAT WHICH IS CALLED FOR BY LOCAL, STATE, & FEDERAL CODES & FROM DEVIATIONS OF THIS PLAN.
11. EXCEPT AS EXPRESSLY PROVIDED HEREIN, NO ADDITIONAL CERTIFICATIONS OR AFFIRMATIONS ARE INTENDED.
12. PRESSURE VALUES ON THIS APPROVAL ARE (ASD) ALLOWABLE DESIGN PRESSURES.
13. ALTERATIONS, ADDITIONS, OR OTHER MARKINGS TO THIS DOCUMENT ARE NOT PERMITTED AND INVALIDATE THIS CERTIFICATION.
14. SAFEGUARDS MUST BE OBSERVED (NOT IN THIS CERTIFICATION)
15. PRODUCT SHALL BE PERMANENTLY LABELED WITH A MINIMUM OF ONE LABEL PER SYSTEM CONTAINING THE FOLLOWING:

FOUR SEASONS SOLAR PRODUCTS, LLC  
HOLBROOK, NY  
AAMA/WDMA/CSA 101/I.S.2/A440-011  
37818.1

### SHEET INDEX

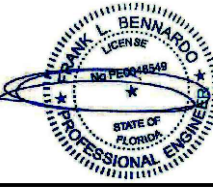
# SHEET	DESCRIPTION
01	COVER SHEET
02-04	ELEVATIONS
05-06	GLASS TYPE & PANEL LOADING TABLES
07-08	ANCHOR CHARTS AND FASTENER SCHEDULE
09-14	STANDARD FRAMING DETAILS
15	PART LIST
16	BILL OF MATERIALS
16	TOTAL SHEETS

VISIT [ECALC.IO/36943](http://ECALC.IO/36943)

FOR HELPFUL RESOURCES, SITE SPECIFIC JOB ORDERING & MORE INFORMATION ABOUT THIS PRODUCT & RELATED SERVICES



FRANK BENNARDO, P.E.  
PE# 0046549 CA# 9885



FL#37818.1

**ENGINEERING EXPRESS**  
CORPORATE OFFICE:  
160 SW 12th AVE, SUITE 106  
DEERFIELD BEACH, FL 33442  
(954) 354-0660 | (866) 396-9999  
TEAM@ENGINEERINGEXPRESS.COM  
ENGINEERINGEXPRESS.COM

**FOUR SEASONS SOLAR PRODUCTS, LLC.**

5005 VETERANS MEMORIAL HIGHWAY  
HOLBROOK, NY 11741  
PH: (631) 563-4000

SERIES FSSW8000  
PVC DUAL & SINGLE SLIDING WINDOW

DRWN	CHKD	DATE
TAE	AJP	2/8/21
RS	AJP	5/27/21

REMARKS  
INIT ISSUE  
REV 1

COPYRIGHT ENGINEERING EXPRESS®

21-36943

SCALE: NTS UNLESS NOTED

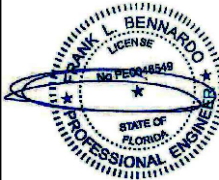
01 OF 16

06/08/2021

C:\Users\ramez\appdata\local\Temp\AcPublish\_10116\21-36943a Vinyl Sliding Window.dwg  
Ramez  
06/08/2021 - 7:19pm

# PVC SLIDING WINDOW (XX) ELEVATIONS (35 PSF)

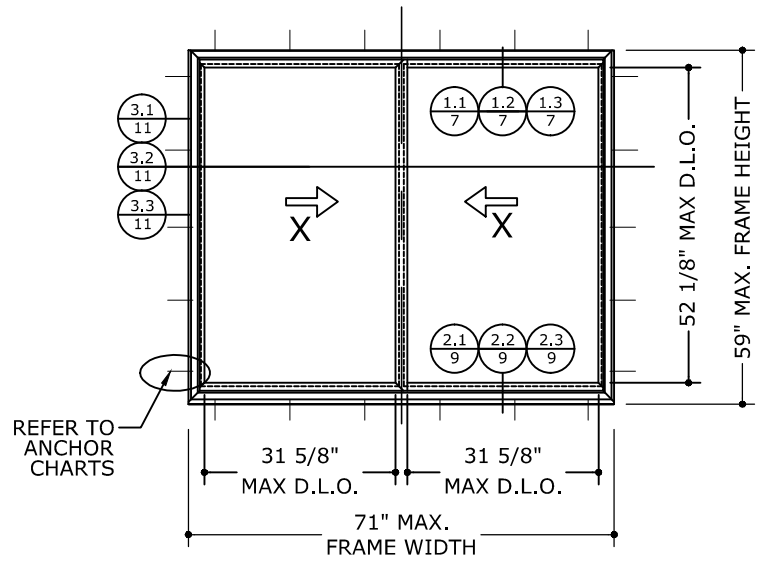
FRANK BENNARDO, P.E.  
PE# 0046549 CA# 9885



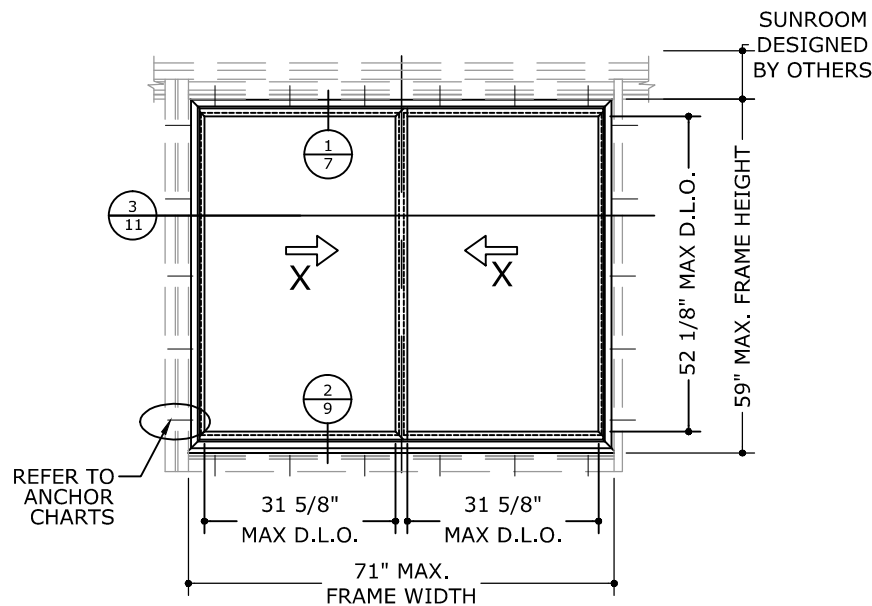
06/08/2021

FL#37818.1

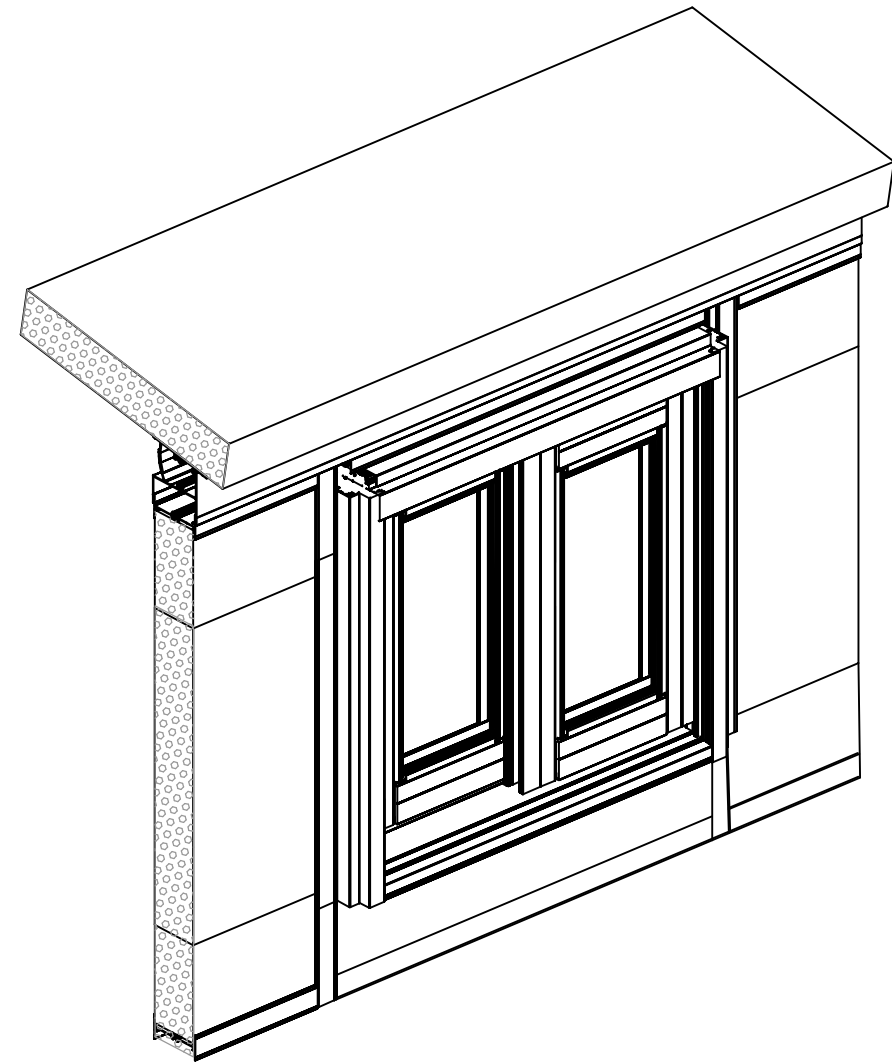
**ENGINEERING EXPRESS**  
CORPORATE OFFICE:  
160 SW 12th AVE, SUITE 106  
DEERFIELD BEACH, FL 33442  
(954) 354-0660 | (866) 396-9999  
TEAM@ENGINEERINGEXPRESS.COM  
ENGINEERINGEXPRESS.COM



**TYPICAL ELEVATION**



**SUNROOM ELEVATION**



**WINDOW INSIDE SUNROOM OPTION**

**FOUR SEASONS SOLAR PRODUCTS, LLC.**

5005 VETERANS MEMORIAL HIGHWAY  
HOLBROOK, NY 11741  
PH: (631) 563-4000

SERIES FSSW8000  
PVC DUAL & SINGLE SLIDING WINDOW

**INSTRUCTIONS TO DETERMINE DESIGN PRESSURE RATING**

- STEP ①: USE THE PANEL LOADING TABLES TO DETERMINE THE ALLOWABLE PRESSURE OF THE GLASS.
- STEP ②: USE THE ANCHOR CHART TABLES TO DETERMINE THE ALLOWABLE ARCHORS.
- STEP ③: THE MINIMUM VALUE BETWEEN STEP ① AND STEP ② WILL DETERMINE THE DESIGN LOAD PRESSURE FOR THE FIXED WINDOW SYSTEM.

**MAXIMUM PANEL AREA:**

PANEL AREA NOT TO EXCEED 14.54 SQ. FT.

**WATER INFILTRATION NOTE:**

WATER RESISTANCE PER ASTM E 547 = 7.52 P.S.F

**MAXIMUM ALLOWABLE DESIGN PRESSURES:**

+35.09 PSF, -35.09PSF

**NOTE:**

FRAME SIZE FOR SINGLE OPENINGS SHALL BE GOVERNED BY THE MAXIMUM ALLOWABLE D.L.O. DIMENSIONS DISPLAYED ON THE PANEL LOADING CHARTS

NOTE: PANEL WIDTH =  $\frac{\text{FRAME WIDTH} - 0.25''}{2}$

D.L.O WIDTH = PANEL WIDTH - 3.75" (+/- 1/16")

REFER TO MANUFACTURER SYSTEM INSTALLATION MANUAL FOR FABRICATION AND ASSEMBLY INSTRUCTIONS.

DRWN	CHKD	DATE
TAE	AJP	2/8/21
RS	AJP	5/27/21

COPYRIGHT ENGINEERING EXPRESS®

21-36943

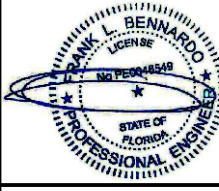
SCALE: NTS UNLESS NOTED

02 OF 16

C:\Users\ramez\appdata\local\Temp\AcPublish\_10116\21-36943a Vinyl Sliding Window.dwg 06/08/2021 - 7:20pm Ramez

# PVC SLIDING WINDOW (XO) OR (OX) ELEVATIONS (40 PSF)

FRANK BENNARDO, P.E.  
PE# 0046549 CA# 9885

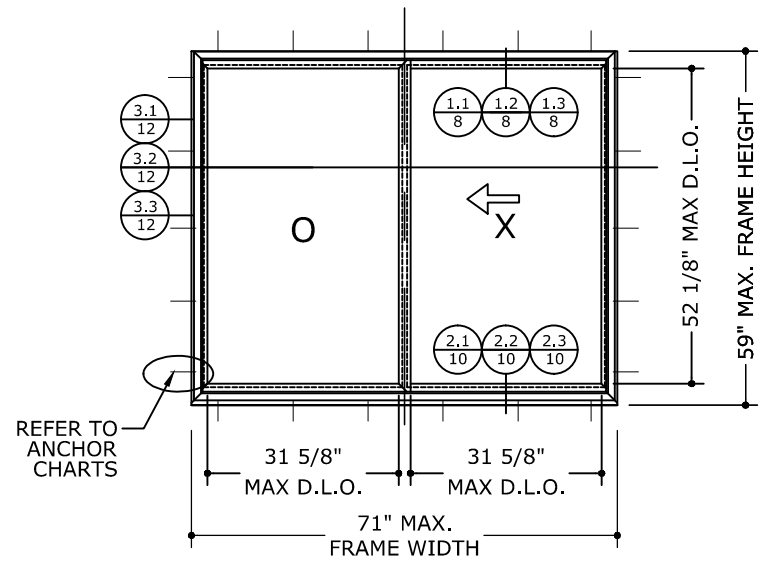


06/08/2021

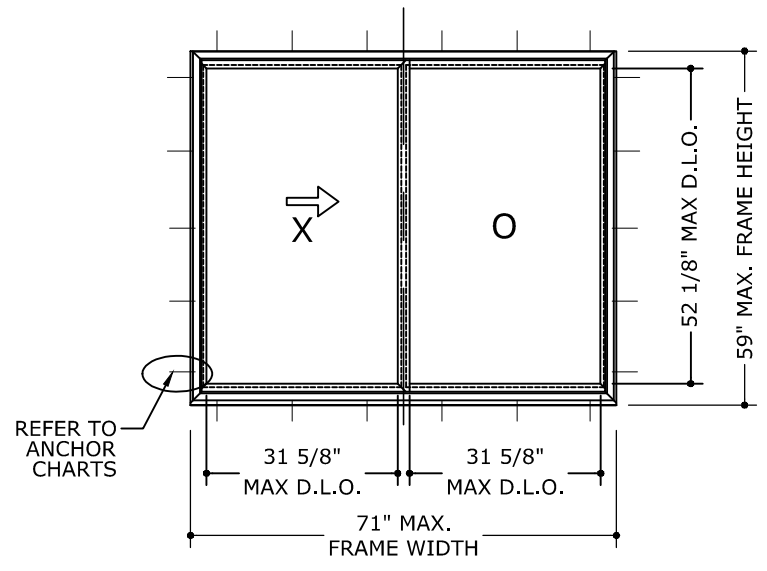
FL#37818.1

**ENGINEERING EXPRESS**  
CORPORATE OFFICE:  
160 SW 12th AVE, SUITE 106  
DEERFIELD BEACH, FL 33442  
(954) 354-0660 | (866) 396-9999  
TEAM@ENGINEERINGEXPRESS.COM  
ENGINEERINGEXPRESS.COM

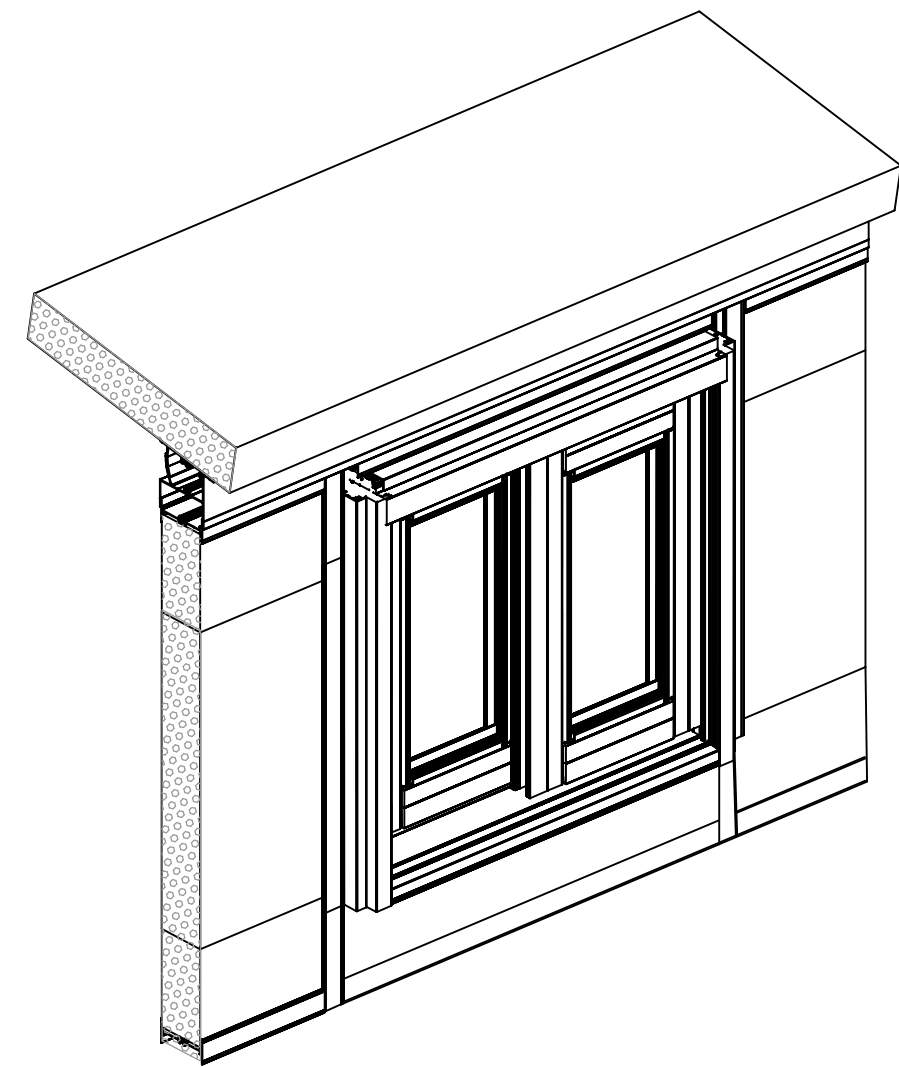
**FOUR SEASONS SOLAR PRODUCTS, LLC.**  
5005 VETERANS MEMORIAL HIGHWAY  
HOLBROOK, NY 11741  
PH: (631) 563-4000  
SERIES FSSW8000  
PVC DUAL & SINGLE SLIDING WINDOW



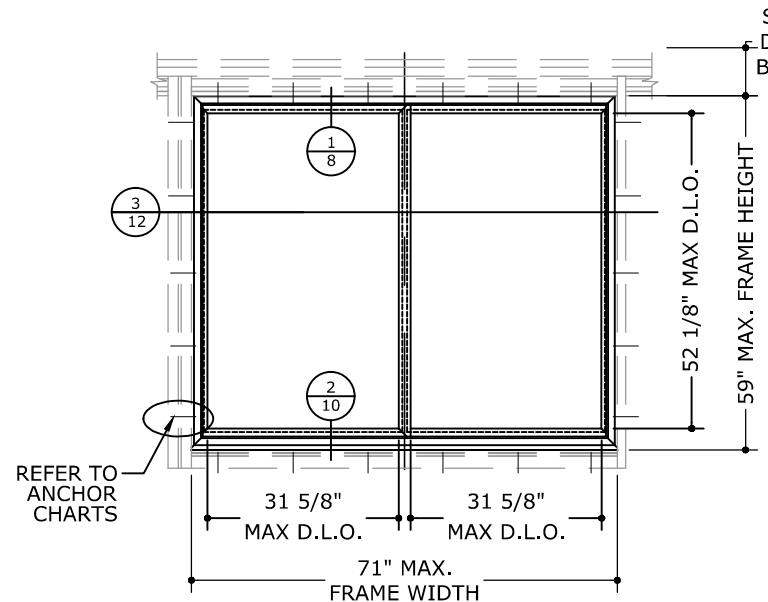
**TYPICAL ELEVATION**



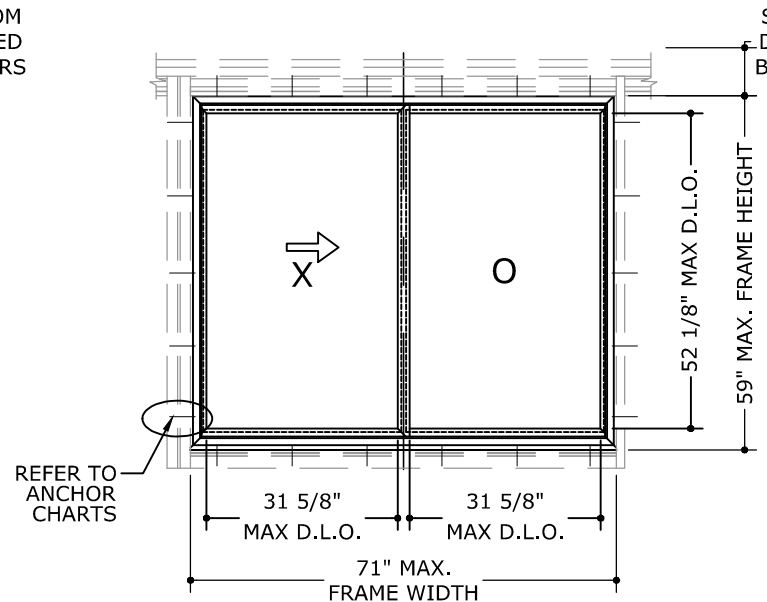
**TYPICAL ELEVATION**



**WINDOW INSIDE SUNROOM OPTION**



**SUNROOM ELEVATION**



**SUNROOM ELEVATION**

**INSTRUCTIONS TO DETERMINE DESIGN PRESSURE RATING**

STEP ①: USE THE PANEL LOADING TABLES TO DETERMINE THE ALLOWABLE PRESSURE OF THE GLASS.

STEP ②: USE THE ANCHOR CHART TABLES TO DETERMINE THE ALLOWABLE ARCHORS.

STEP ③: THE MINIMUM VALUE BETWEEN STEP ① AND STEP ② WILL DETERMINE THE DESIGN LOAD PRESSURE FOR THE FIXED WINDOW SYSTEM.

**MAXIMUM PANEL AREA:**  
PANEL AREA NOT TO EXCEED 14.54 SQ. FT.

**WATER INFILTRATION NOTE:**  
WATER RESISTANCE PER ASTM E 547 = 7.52 P.S.F

**MAXIMUM ALLOWABLE DESIGN PRESSURES:**  
+40.1 PSF, -40.1PSF

NOTE:  
FRAME SIZE FOR SINGLE OPENINGS SHALL BE GOVERNED BY THE MAXIMUM ALLOWABLE D.L.O. DIMENSIONS DISPLAYED ON THE PANEL LOADING CHARTS

NOTE: PANEL WIDTH =  $\frac{\text{FRAME WIDTH} - 0.25''}{2}$

D.L.O WIDTH = PANEL WIDTH - 3.75" (+/- 1/16")

REFER TO MANUFACTURER SYSTEM INSTALLATION MANUAL FOR FABRICATION AND ASSEMBLY INSTRUCTIONS.

DRWN	CHKD	DATE
TAE	AJP	2/8/21
RS	AJP	5/27/21

REMARKS
INIT ISSUE
REV 1

COPYRIGHT ENGINEERING EXPRESS®  
**21-36943**

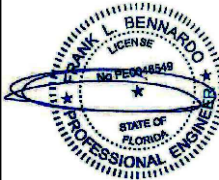
SCALE: NTS UNLESS NOTED

**03** OF **16**

C:\Users\ramez\appdata\local\Temp\AcPublish\_10116\21-36943a Vinyl Sliding Window.dwg Ramez 06/08/2021 - 7:21pm

# PVC SLIDING WINDOW (XO) ELEVATIONS (50 PSF)

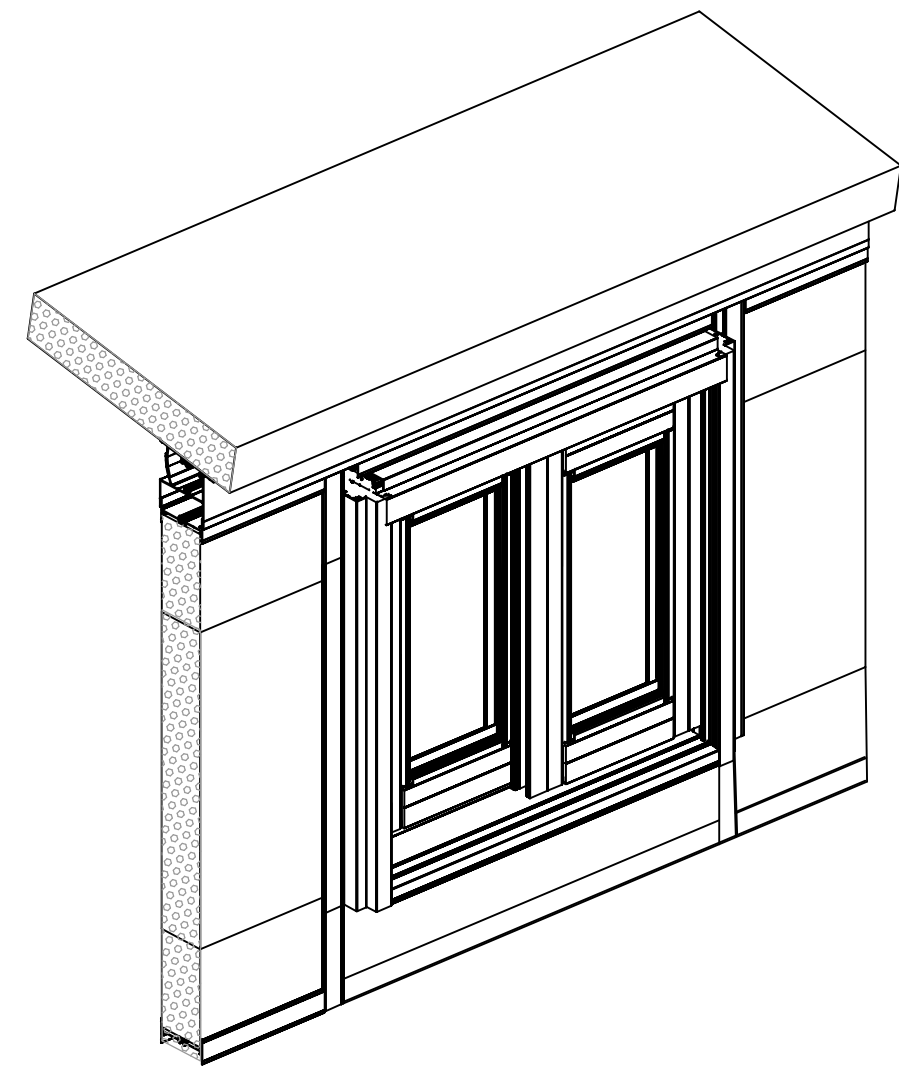
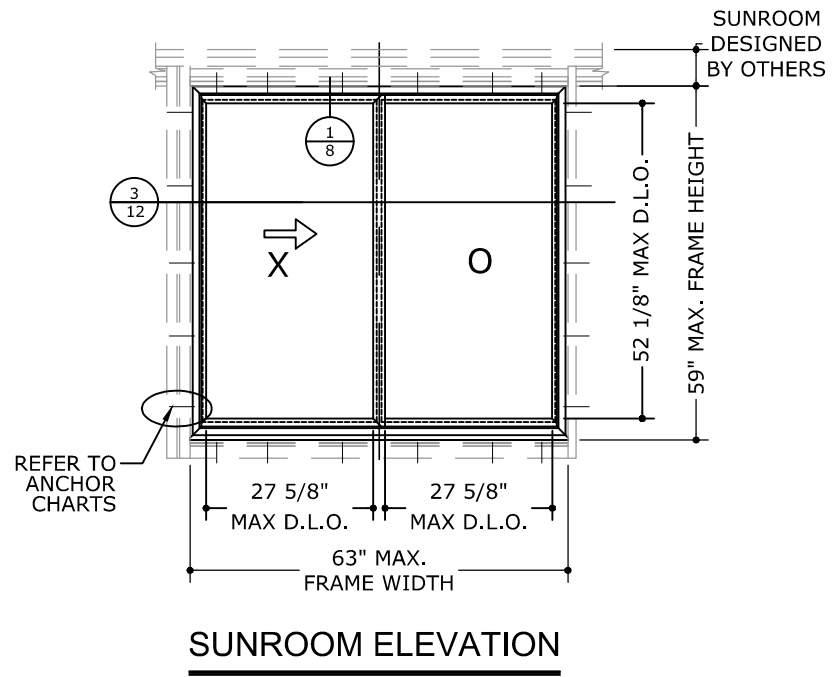
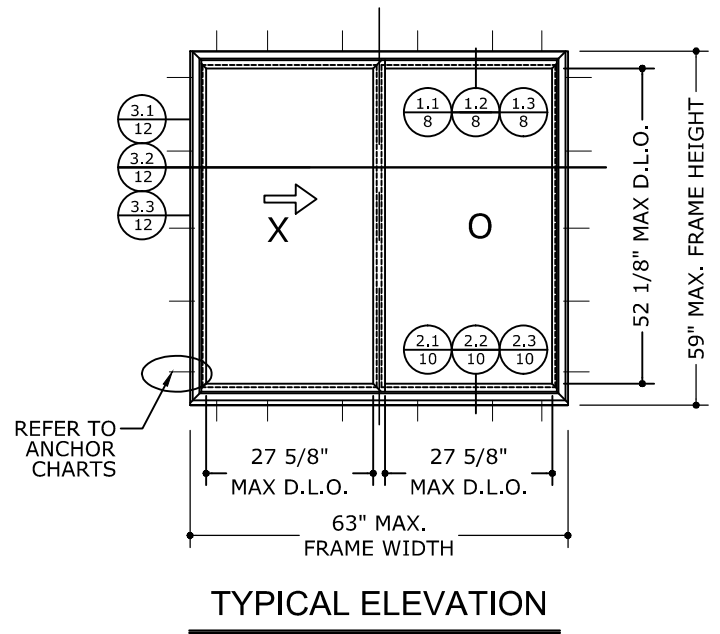
FRANK BENNARDO, P.E.  
PE# 0046549 CA# 9885



06/08/2021

FL#37818.1

**ENGINEERING EXPRESS**  
CORPORATE OFFICE:  
160 SW 12th AVE, SUITE 106  
DEERFIELD BEACH, FL 33442  
(954) 354-0660 | (866) 396-9999  
TEAM@ENGINEERINGEXPRESS.COM  
ENGINEERINGEXPRESS.COM



**FOUR SEASONS SOLAR PRODUCTS, LLC.**

5005 VETERANS MEMORIAL HIGHWAY  
HOLBROOK, NY 11741  
PH: (631) 563-4000

SERIES FSSW8000  
PVC DUAL & SINGLE SLIDING WINDOW

**INSTRUCTIONS TO DETERMINE DESIGN PRESSURE RATING**

STEP ①: USE THE PANEL LOADING TABLES TO DETERMINE THE ALLOWABLE PRESSURE OF THE GLASS.

STEP ②: USE THE ANCHOR CHART TABLES TO DETERMINE THE ALLOWABLE ARCHORS.

STEP ③: THE MINIMUM VALUE BETWEEN STEP ① AND STEP ② WILL DETERMINE THE DESIGN LOAD PRESSURE FOR THE FIXED WINDOW SYSTEM.

**MAXIMUM PANEL AREA:**  
PANEL AREA NOT TO EXCEED 12.17 SQ. FT.

**WATER INFILTRATION NOTE:**  
WATER RESISTANCE PER ASTM E 547 = 7.52 P.S.F

**MAXIMUM ALLOWABLE DESIGN PRESSURES:**  
+50.13 PSF, -50.13 PSF

NOTE:  
FRAME SIZE FOR SINGLE OPENINGS SHALL BE GOVERNED BY THE MAXIMUM ALLOWABLE D.L.O. DIMENSIONS DISPLAYED ON THE PANEL LOADING CHARTS

NOTE: PANEL WIDTH =  $\frac{\text{FRAME WIDTH} - 0.25"}{2}$

D.L.O WIDTH = PANEL WIDTH - 3.75" (+/- 1/16")

REFER TO MANUFACTURER SYSTEM INSTALLATION MANUAL FOR FABRICATION AND ASSEMBLY INSTRUCTIONS.

DRWN	CHKD	DATE
TAE	AJP	2/8/21
RS	AJP	5/27/21

REMARKS	INIT	ISSUE
REV 1		

COPYRIGHT ENGINEERING EXPRESS®  
**21-36943**

SCALE: NTS UNLESS NOTED

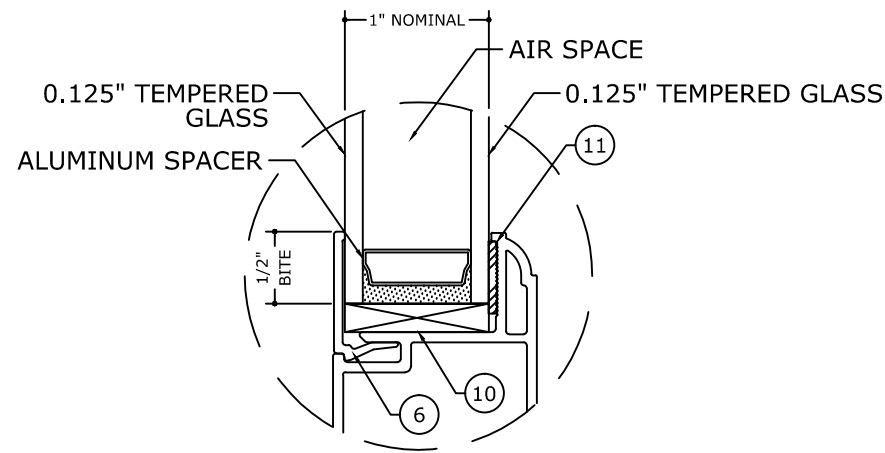
**04** OF 16

C:\Users\ramez\appdata\local\Temp\AcPublish\_10116121-36943a Vinyl Sliding Window.dwg  
Ramez  
06/08/2021 - 7:21pm

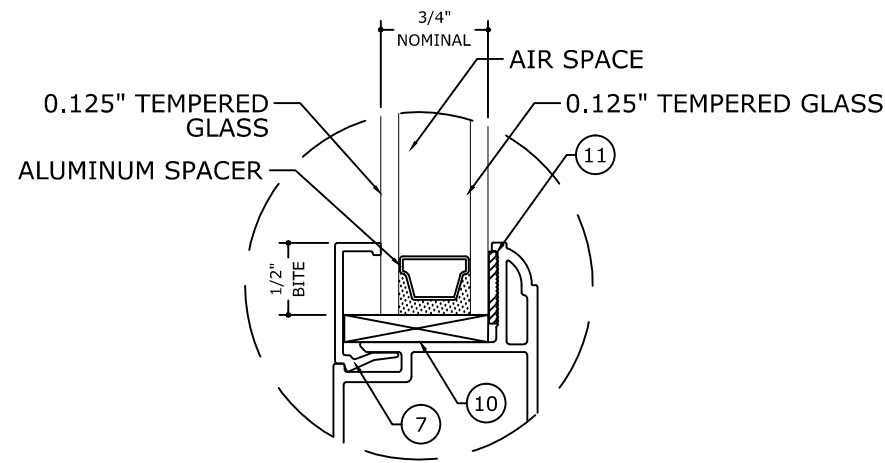


# GLASS TYPES

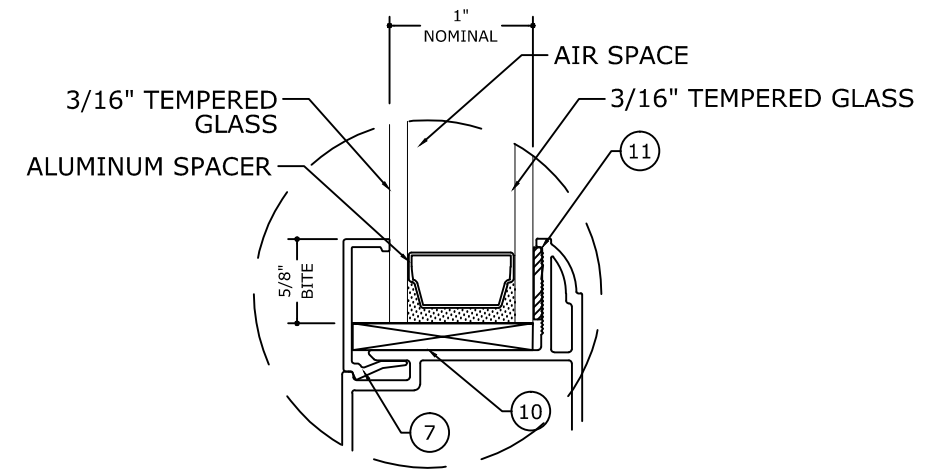
NOTE: GLASS SIZE = DLO + (GLASS BITE x 2)



GLASS TYPE **G1**  
GLAZING DETAIL  
 N.T.S.



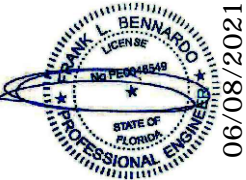
GLASS TYPE **G2**  
GLAZING DETAIL  
 N.T.S.



GLASS TYPE **G3**  
GLAZING DETAIL  
 N.T.S.

NOTES:  
 1. GLAZING TYPE COMPLIES WITH ASTM E1300 REQUIREMENTS.  
 2. SETTING BLOCK SHALL COMPLY WITH 2411.3.3.1 OF THE FLORIDA BUILDING CODE SEVENTH EDITION (2020)

FRANK BENNARDO, P.E.  
 PE# 0046549 CA# 9885



06/08/2021

FL#37818.1

**ENGINEERING EXPRESS**  
 CORPORATE OFFICE:  
 160 SW 12th AVE, SUITE 106  
 DEERFIELD BEACH, FL 33442  
 (954) 354-0660 | (866) 396-9999  
 TEAM@ENGINEERINGEXPRESS.COM  
 ENGINEERINGEXPRESS.COM

**FOUR SEASONS SOLAR PRODUCTS, LLC.**  
 5005 VETERANS MEMORIAL HIGHWAY  
 HOLBROOK, NY 11741  
 PH: (631) 563-4000  
 SERIES FSSW8000  
 PVC DUAL & SINGLE SLIDING WINDOW

REMARKS	DRWN	CHKD	DATE
INIT ISSUE	TAE	AJP	2/8/21
REV 1	RS	AJP	5/27/21

COPYRIGHT ENGINEERING EXPRESS®


21-36943


SCALE: NTS UNLESS NOTED


05 OF 16

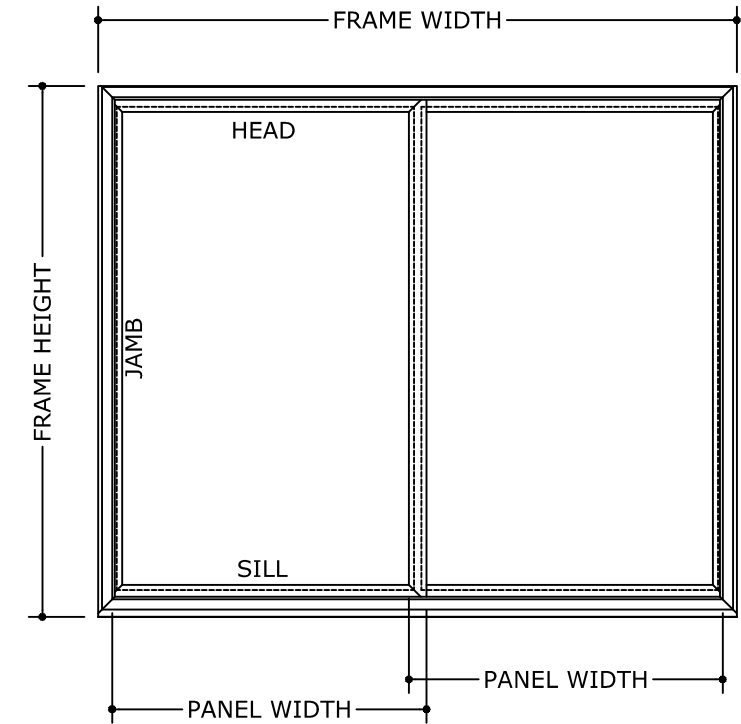
C:\Users\ramez\appdata\local\Temp\AcPublish\_10116121-36943a Vinyl Sliding Window.dwg  
 Ramez  
 06/08/2021 - 7:21pm

# PANEL LOADING TABLES

35 PSF DESIGN (XX)		 ALLOWABLE PRESSURE	
FRAME HEIGHT (in)	PANEL WIDTH (in)	(+) P.S.F	(-) P.S.F
24	12	53	53
	18	53	53
	24	53	53
	30	53	53
	31-5/8	53	53
	42	53	53
	48	53	53
	54	53	53
30	12	53	53
	18	53	53
	24	53	53
	30	53	53
	31-5/8	53	53
	42	53	53
	48	53	53
	54	53	53
36	12	53	53
	18	53	53
	24	53	53
	30	53	53
	31-5/8	53	53
	42	53	53
	48	53	53
	54	53	53
42	12	53	53
	18	53	53
	24	53	53
	30	53	53
	31-5/8	53	53
	42	53	53
	48	53	53
	54	53	53
48	12	53	53
	18	53	53
	24	53	53
	30	52	52
	31-5/8	47	47
	42	45	45
54	12	53	53
	18	53	53
	24	51	51
	30	44	44
	31-5/8	39	39
59	12	53	53
	18	53	53
	24	46	46
	30	39	39
	31-5/8	35	35

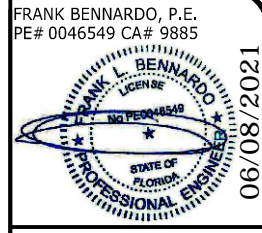
40 PSF DESIGN (OX AND XO)		 ALLOWABLE PRESSURE		
FRAME HEIGHT (in)	PANEL WIDTH (in)	(+) P.S.F	(-) P.S.F	
24	12	60	60	
	18	60	60	
	24	60	60	
	30	60	60	
	31-5/8	60	60	
	42	60	60	
	48	60	60	
	54	60	60	
	30	12	60	60
		18	60	60
24		60	60	
30		60	60	
31-5/8		60	60	
42		60	60	
48		60	60	
54		60	60	
36	12	60	60	
	18	60	60	
	24	60	60	
	30	60	60	
	31-5/8	60	60	
	42	60	60	
	48	60	60	
	54	60	60	
42	12	60	60	
	18	60	60	
	24	60	60	
	30	60	60	
	31-5/8	60	60	
	42	60	60	
	48	60	60	
	54	60	60	
48	12	60	60	
	18	60	60	
	24	60	60	
	30	60	60	
	31-5/8	54	54	
	42	52	52	
54	12	60	60	
	18	60	60	
	24	59	59	
	30	50	50	
	31-5/8	45	45	
59	12	60	60	
	18	60	60	
	24	52	52	
	30	45	45	
	31-5/8	40	40	

50 PSF DESIGN (XO)		 ALLOWABLE PRESSURE		
FRAME HEIGHT (in)	PANEL WIDTH (in)	(+) P.S.F	(-) P.S.F	
24	12	75	75	
	18	75	75	
	24	75	75	
	27-5/8	75	75	
	36-1/2	75	75	
	42	75	75	
	48	75	75	
	54	75	75	
	30	12	75	75
		18	75	75
24		75	75	
27-5/8		75	75	
36-1/2		75	75	
42		75	75	
48		75	75	
54		75	75	
36	12	75	75	
	18	75	75	
	24	75	75	
	27-5/8	75	75	
	36-1/2	75	75	
	42	75	75	
	48	75	75	
	54	75	75	
42	12	75	75	
	18	75	75	
	24	75	75	
	27-5/8	75	75	
	36-1/2	75	75	
	42	75	75	
	48	75	75	
	54	75	75	
48	12	75	75	
	18	75	75	
	24	75	75	
	27-5/8	75	75	
	36-1/2	68	68	
	42	65	65	
54	12	75	75	
	18	75	75	
	24	73	73	
	27-5/8	63	63	
	36-1/2	56	56	
59	12	75	75	
	18	75	75	
	24	64	64	
	27-5/8	50	50	
	36-1/2	46	46	



NOTE:  $\text{PANEL/SASH WIDTH} = \frac{\text{FRAME WIDTH} - 0.25''}{2}$

FRANK BENNARDO, P.E.  
PE# 0046549 CA# 9885



06/08/2021

FL#37818.1

**ENGINEERING EXPRESS**  
CORPORATE OFFICE:  
160 SW 12th AVE, SUITE 106  
DEERFIELD BEACH, FL 33442  
(954) 354-0660 | (866) 396-9999  
TEAM@ENGINEERINGEXPRESS.COM  
ENGINEERINGEXPRESS.COM

**FOUR SEASONS SOLAR PRODUCTS, LLC.**  
5005 VETERANS MEMORIAL HIGHWAY  
HOLBROOK, NY 11741  
PH: (631) 563-4000  
SERIES FSSW8000  
PVC DUAL & SINGLE SLIDING WINDOW

DRWN	CHKD	DATE
TAE	AJP	2/8/21
RS	AJP	5/27/21

REMARKS  
INIT ISSUE  
REV 1

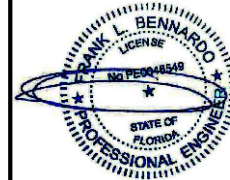
COPYRIGHT ENGINEERING EXPRESS®  
21-36943

SCALE: NTS UNLESS NOTED

C:\Users\ramez\appdata\local\Temp\AcPublish\_10116\21-36943a Vinyl Sliding Window.dwg Ramez 06/08/2021 - 7:22pm

# FASTENER SCHEDULE

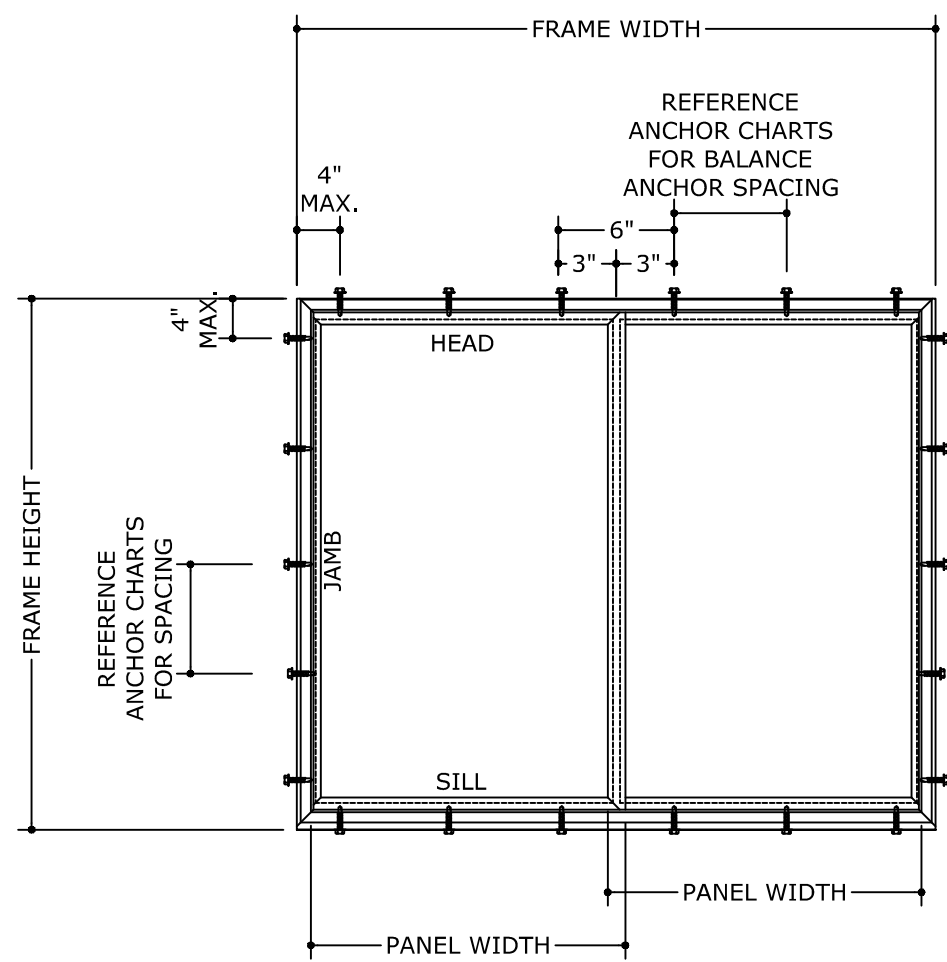
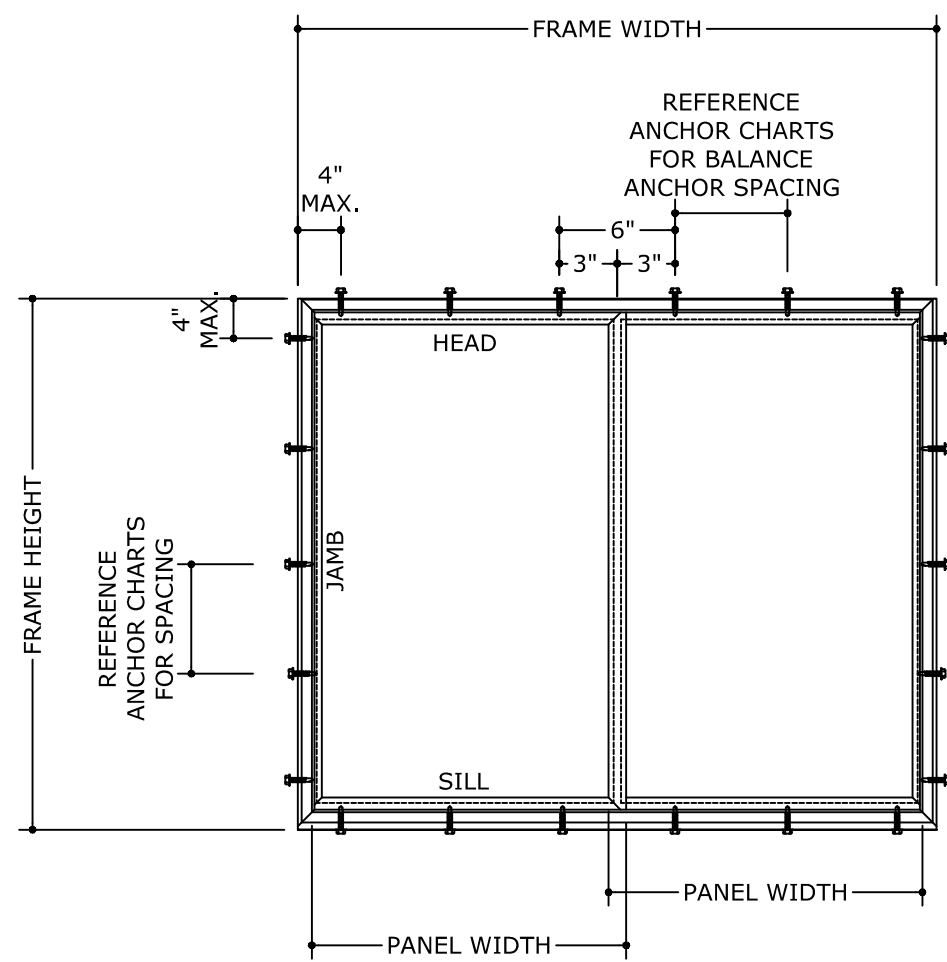
FRANK BENNARDO, P.E.  
PE# 0046549 CA# 9885



06/08/2021

FL#37818.1

**ENGINEERING EXPRESS**  
CORPORATE OFFICE:  
160 SW 12th AVE, SUITE 106  
DEERFIELD BEACH, FL 33442  
(954) 354-0660 | (866) 396-9999  
TEAM@ENGINEERINGEXPRESS.COM  
ENGINEERINGEXPRESS.COM



**FOUR SEASONS SOLAR PRODUCTS, LLC.**  
5005 VETERANS MEMORIAL HIGHWAY  
HOLBROOK, NY 11741  
PH: (631) 563-4000

SERIES FSSW8000  
PVC DUAL & SINGLE SLIDING WINDOW

ANCHOR SCHEDULE						
ANCHOR TYPE	ANCHOR DIAMETER	TYPE	MANUFACTURER	SUBSTRATE	MIN. EMBEDMENT (IN)	MIN. EDGE DISTANCE (IN)
A	3/16"	ULTRACON ANCHOR	DEWALT	POURED CONCRETE 3000 PSI MIN.	1-3/4	2-1/2
B	#10	SELF DRILLING SCREW GRADE 5	-	1/8" STEEL-A 36 MIN.	FULL - 3 PITCHES PAST THE THREAD PLANE	1-1/2
				1/8" ALUMINUM-6063-T6		
C	#8	WOOD SCREW	-	2X WOOD BUCK G=0.55	1-1/2	1-1/2

REMARKS	DRWN	CHKD	DATE
	INIT ISSUE	TAE	AJP
REV 1	RS	AJP	5/27/21

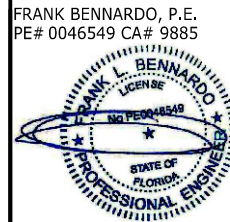
COPYRIGHT ENGINEERING EXPRESS®

21-36943

SCALE: NTS UNLESS NOTED

C:\Users\ramez\appdata\local\temp\AcPublish\_10116121-36943a Vinyl Sliding Window.dwg Ramez 06/08/2021 - 7:22pm

# ANCHOR CHARTS



06/08/2021

FL#37818.1

**ENGINEERING EXPRESS**

CORPORATE OFFICE:  
160 SW 12th AVE, SUITE 106  
DEERFIELD BEACH, FL 33442  
(954) 354-0660 | (866) 396-9999  
TEAM@ENGINEERINGEXPRESS.COM  
ENGINEERINGEXPRESS.COM

**FOUR SEASONS SOLAR PRODUCTS, LLC.**

5005 VETERANS MEMORIAL HIGHWAY  
HOLBROOK, NY 11741  
PH: (631) 563-4000

SERIES FSSW8000  
PVC DUAL & SINGLE SLIDING WINDOW

<b>REMARKS</b>	<b>DRWN</b>	<b>CHKD</b>	<b>DATE</b>
INIT ISSUE	TAE	AJP	2/8/21
REV 1	RS	AJP	5/27/21

COPYRIGHT ENGINEERING EXPRESS®

21-36943

SCALE: NTS UNLESS NOTED

08

OF 16

FRAME HEIGHT (in)	PANEL WIDTH (in)	TYPE A (CONCRETE)		TYPE B (METAL)		TYPE C (WOOD)	
		HEAD/SILL MAX ANCHOR SPACING (IN)	JAMBS MAX ANCHOR SPACING (IN)	HEAD/SILL MAX ANCHOR SPACING (IN)	JAMBS MAX ANCHOR SPACING (IN)	HEAD/SILL MAX ANCHOR SPACING (IN)	JAMBS MAX ANCHOR SPACING (IN)
24	12	6"O.C.	12"O.C.	6"O.C.	12"O.C.	6"O.C.	12"O.C.
	18	9"O.C.	12"O.C.	9"O.C.	12"O.C.	9"O.C.	12"O.C.
	24	12"O.C.	12"O.C.	12"O.C.	12"O.C.	12"O.C.	12"O.C.
	30	15"O.C.	12"O.C.	15"O.C.	12"O.C.	15"O.C.	12"O.C.
	37	18"O.C.	12"O.C.	18"O.C.	12"O.C.	18"O.C.	12"O.C.
	42	21"O.C.	12"O.C.	21"O.C.	12"O.C.	21"O.C.	12"O.C.
	48	24"O.C.	12"O.C.	24"O.C.	12"O.C.	24"O.C.	12"O.C.
	54	27"O.C.	12"O.C.	27"O.C.	12"O.C.	27"O.C.	12"O.C.
30	12	6"O.C.	15"O.C.	6"O.C.	15"O.C.	6"O.C.	15"O.C.
	18	9"O.C.	15"O.C.	9"O.C.	15"O.C.	9"O.C.	15"O.C.
	24	12"O.C.	15"O.C.	12"O.C.	15"O.C.	12"O.C.	15"O.C.
	30	15"O.C.	15"O.C.	15"O.C.	15"O.C.	15"O.C.	15"O.C.
	37	18"O.C.	15"O.C.	18"O.C.	15"O.C.	18"O.C.	15"O.C.
	42	21"O.C.	15"O.C.	21"O.C.	15"O.C.	21"O.C.	15"O.C.
	48	24"O.C.	15"O.C.	24"O.C.	15"O.C.	24"O.C.	15"O.C.
	54	27"O.C.	15"O.C.	27"O.C.	15"O.C.	27"O.C.	15"O.C.
36	12	6"O.C.	18"O.C.	6"O.C.	18"O.C.	6"O.C.	18"O.C.
	18	9"O.C.	18"O.C.	9"O.C.	18"O.C.	9"O.C.	18"O.C.
	24	12"O.C.	18"O.C.	12"O.C.	18"O.C.	12"O.C.	18"O.C.
	30	15"O.C.	18"O.C.	15"O.C.	18"O.C.	15"O.C.	18"O.C.
	37	18"O.C.	18"O.C.	18"O.C.	18"O.C.	18"O.C.	18"O.C.
	42	21"O.C.	18"O.C.	21"O.C.	18"O.C.	21"O.C.	18"O.C.
	48	24"O.C.	18"O.C.	24"O.C.	18"O.C.	16"O.C.	18"O.C.
	54	27"O.C.	18"O.C.	27"O.C.	18"O.C.	18"O.C.	18"O.C.

FRAME HEIGHT (in)	PANEL WIDTH (in)	TYPE A (CONCRETE)		TYPE B (METAL)		TYPE C (WOOD)	
		HEAD/SILL MAX ANCHOR SPACING (IN)	JAMBS MAX ANCHOR SPACING (IN)	HEAD/SILL MAX ANCHOR SPACING (IN)	JAMBS MAX ANCHOR SPACING (IN)	HEAD/SILL MAX ANCHOR SPACING (IN)	JAMBS MAX ANCHOR SPACING (IN)
42	12	6"O.C.	21"O.C.	6"O.C.	21"O.C.	6"O.C.	21"O.C.
	18	9"O.C.	21"O.C.	9"O.C.	21"O.C.	9"O.C.	21"O.C.
	24	12"O.C.	21"O.C.	12"O.C.	21"O.C.	12"O.C.	21"O.C.
	30	15"O.C.	21"O.C.	15"O.C.	21"O.C.	15"O.C.	21"O.C.
	37	18"O.C.	21"O.C.	18"O.C.	21"O.C.	18"O.C.	21"O.C.
	42	21"O.C.	21"O.C.	21"O.C.	21"O.C.	21"O.C.	21"O.C.
	48	24"O.C.	21"O.C.	24"O.C.	21"O.C.	16"O.C.	14"O.C.
	54	27"O.C.	21"O.C.	18"O.C.	21"O.C.	18"O.C.	14"O.C.
48	12	6"O.C.	24"O.C.	6"O.C.	24"O.C.	6"O.C.	24"O.C.
	18	9"O.C.	24"O.C.	9"O.C.	24"O.C.	9"O.C.	24"O.C.
	24	12"O.C.	24"O.C.	12"O.C.	24"O.C.	12"O.C.	24"O.C.
	30	15"O.C.	24"O.C.	15"O.C.	24"O.C.	15"O.C.	24"O.C.
	37	18"O.C.	24"O.C.	18"O.C.	24"O.C.	18"O.C.	24"O.C.
	42	21"O.C.	24"O.C.	21"O.C.	24"O.C.	21"O.C.	24"O.C.
	48	24"O.C.	24"O.C.	16"O.C.	16"O.C.	16"O.C.	16"O.C.
	54	18"O.C.	24"O.C.	18"O.C.	16"O.C.	14"O.C.	16"O.C.
54	12	6"O.C.	27"O.C.	6"O.C.	27"O.C.	6"O.C.	27"O.C.
	18	9"O.C.	27"O.C.	9"O.C.	27"O.C.	9"O.C.	27"O.C.
	24	12"O.C.	27"O.C.	12"O.C.	27"O.C.	12"O.C.	27"O.C.
	30	15"O.C.	27"O.C.	15"O.C.	27"O.C.	15"O.C.	27"O.C.
	37	18"O.C.	27"O.C.	18"O.C.	27"O.C.	18"O.C.	27"O.C.
	42	21"O.C.	27"O.C.	21"O.C.	27"O.C.	21"O.C.	27"O.C.
	48	16"O.C.	18"O.C.	16"O.C.	18"O.C.	12"O.C.	14"O.C.
	54	18"O.C.	18"O.C.	18"O.C.	18"O.C.	14"O.C.	14"O.C.
59	12	6"O.C.	30"O.C.	6"O.C.	30"O.C.	6"O.C.	30"O.C.
	18	9"O.C.	30"O.C.	9"O.C.	30"O.C.	9"O.C.	30"O.C.
	24	12"O.C.	30"O.C.	12"O.C.	30"O.C.	12"O.C.	30"O.C.
	30	15"O.C.	30"O.C.	15"O.C.	30"O.C.	15"O.C.	30"O.C.
	37	18"O.C.	30"O.C.	18"O.C.	30"O.C.	18"O.C.	30"O.C.
	42	21"O.C.	30"O.C.	21"O.C.	30"O.C.	21"O.C.	30"O.C.
	48	16"O.C.	20"O.C.	16"O.C.	15"O.C.	12"O.C.	15"O.C.
	54	18"O.C.	20"O.C.	14"O.C.	15"O.C.	14"O.C.	12"O.C.

NOTE: DESIGN PRESSURE FOR ABOVE ANCHOR CHART SHALL NOT EXCEED +/- 75 PSF

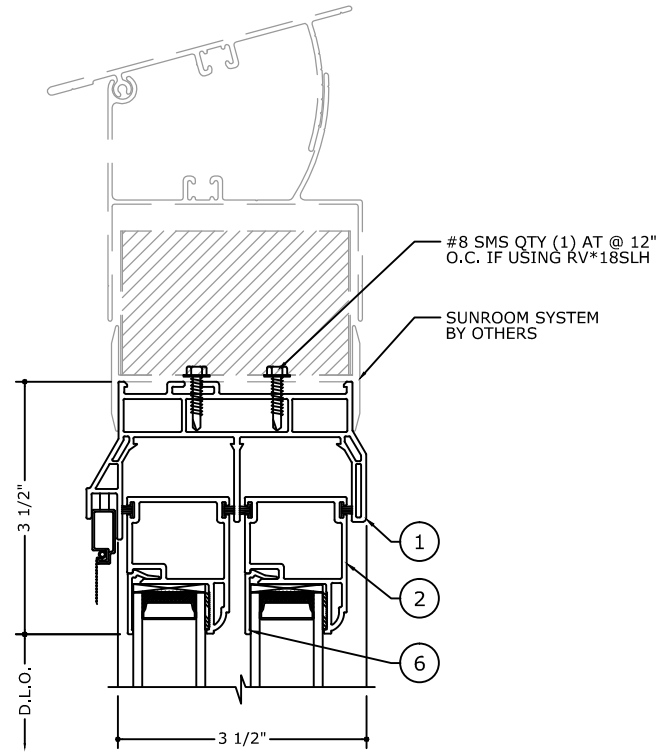
C:\Users\ramez\appdata\local\temp\AcPublish\_101161\21-36943a Vinyl Sliding Window.dwg

Ramez

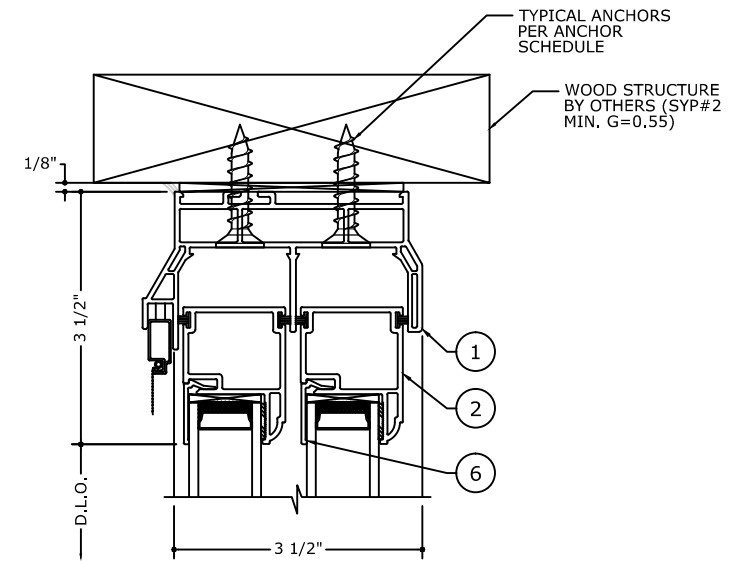
06/08/2021 - 7:22pm



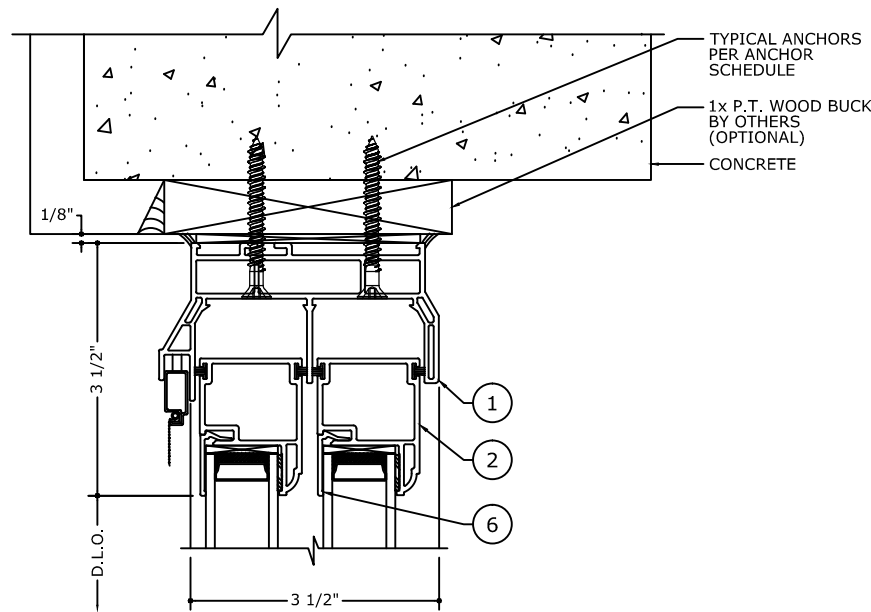
# HEAD DETAILS AT 35 PSF



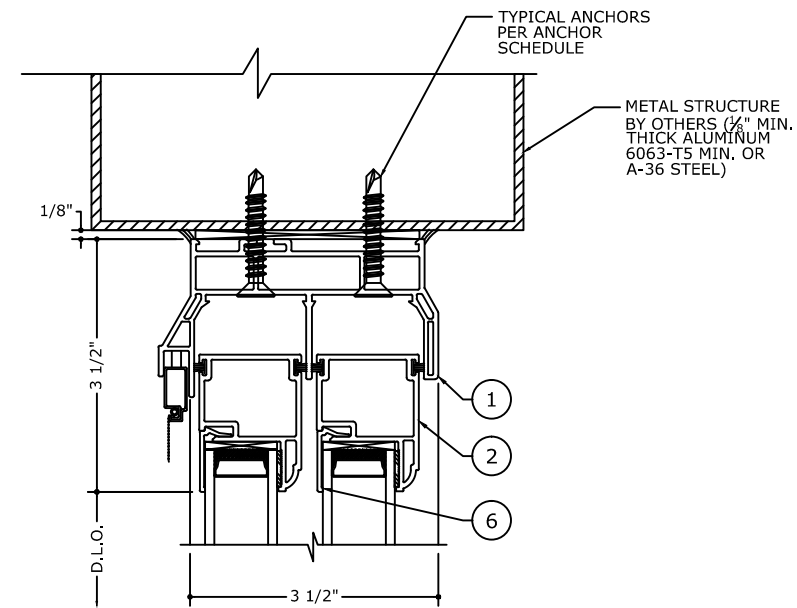
**1 HEAD DETAIL**  
SUNROOM CONDITION



**1.1 HEAD DETAIL**  
WOOD CONDITION



**1.2 HEAD DETAIL**  
CONCRETE CONDITION



**1.3 HEAD DETAIL**  
ALUMINUM /STEEL

NOTE: REFER TO SYSTEM INSTALLATION MANUAL FOR FABRICATION AND ASSEMBLY INSTRUCTIONS.

FRANK BENNARDO, P.E.  
PE# 0046549 CA# 9885

FL#37818.1

**ENGINEERING EXPRESS**  
CORPORATE OFFICE:  
160 SW 12th AVE, SUITE 106  
DEERFIELD BEACH, FL 33442  
(954) 354-0660 | (866) 396-9999  
TEAM@ENGINEERINGEXPRESS.COM  
ENGINEERINGEXPRESS.COM

**FOUR SEASONS SOLAR PRODUCTS, LLC.**  
5005 VETERANS MEMORIAL HIGHWAY  
HOLBROOK, NY 11741  
PH: (631) 563-4000  
SERIES FSSW8000  
PVC DUAL & SINGLE SLIDING WINDOW

REMARKS	DRWN	CHKD	DATE
INIT ISSUE	TAE	AJP	2/8/21
REV 1	RS	AJP	5/27/21

COPYRIGHT ENGINEERING EXPRESS®

21-36943

SCALE: NTS UNLESS NOTED

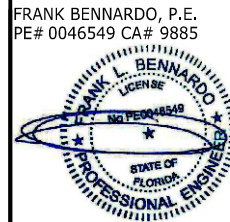
09 OF 16

C:\Users\ramez\appdata\local\Temp\AcPublish\_10116121-36943a Vinyl Sliding Window.dwg  
Ramez  
06/08/2021 - 7:22pm

06/08/2021

# HEAD DETAILS AT 40 PSF AND 50 PSF

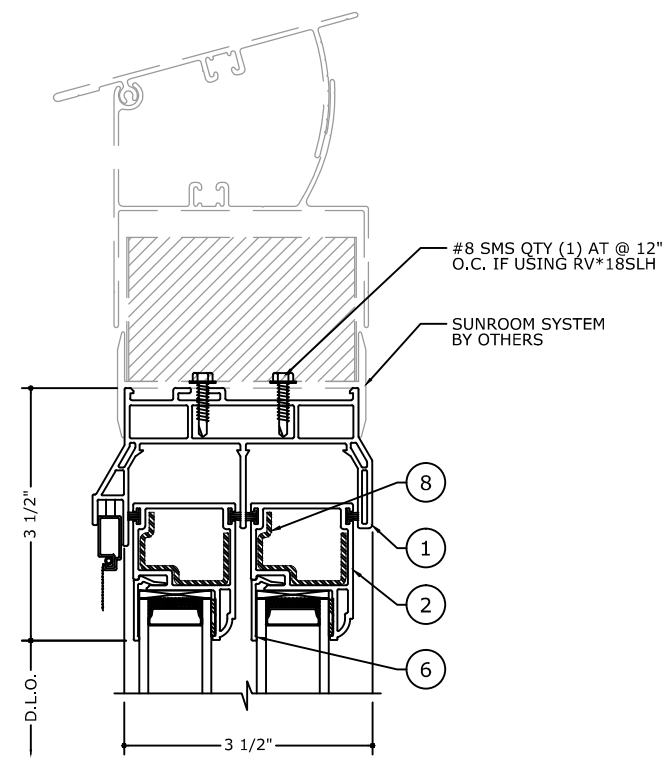
FRANK BENNARDO, P.E.  
PE# 0046549 CA# 9885



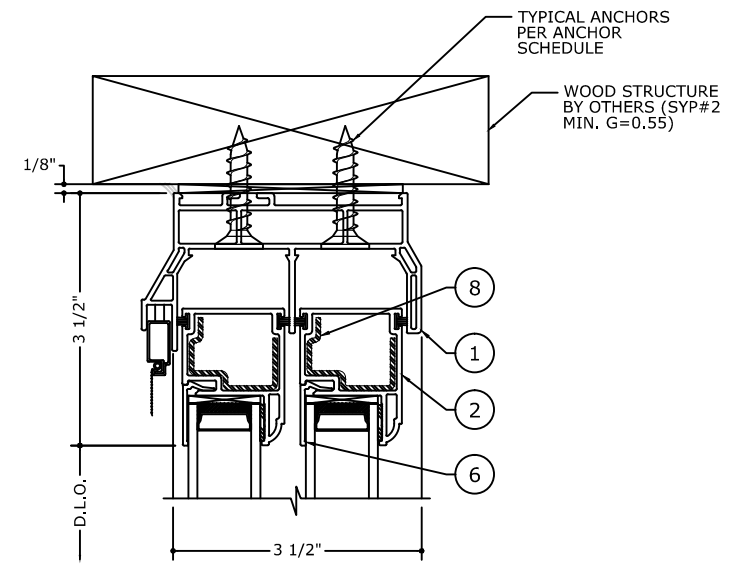
06/08/2021

FL#37818.1

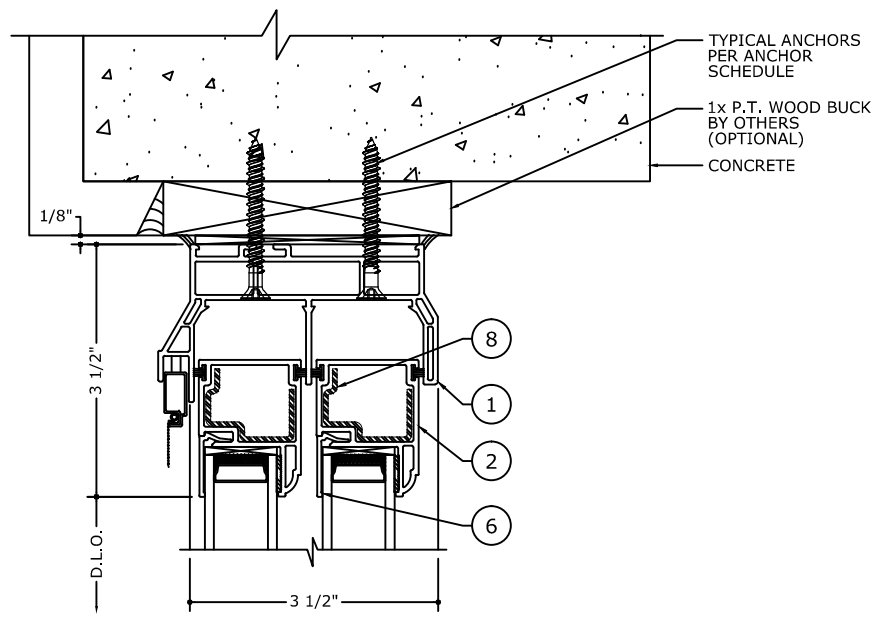
**ENGINEERING EXPRESS**  
CORPORATE OFFICE:  
160 SW 12th AVE, SUITE 106  
DEERFIELD BEACH, FL 33442  
(954) 354-0660 | (866) 396-9999  
TEAM@ENGINEERINGEXPRESS.COM  
ENGINEERINGEXPRESS.COM



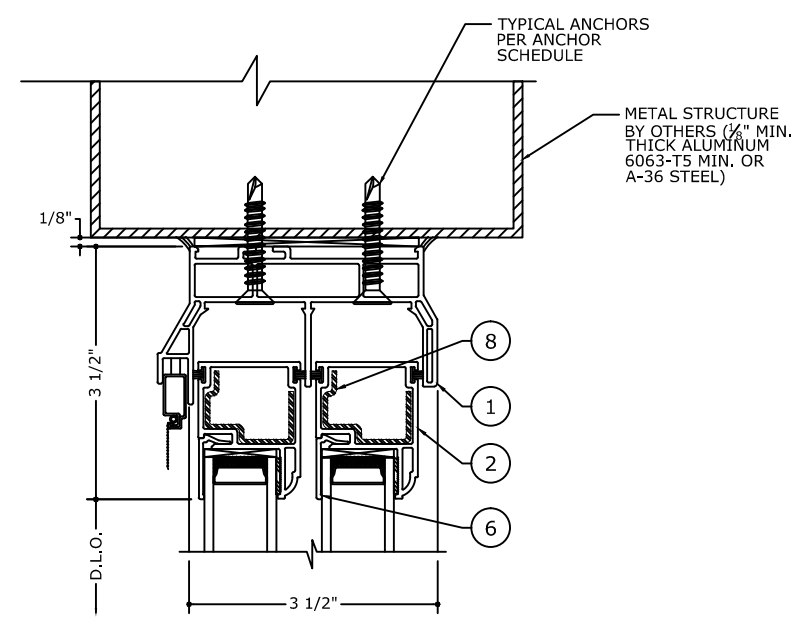
**1 HEAD DETAIL**  
SUNROOM CONDITION



**1.1 HEAD DETAIL**  
WOOD CONDITION



**1.2 HEAD DETAIL**  
CONCRETE CONDITION



**1.3 HEAD DETAIL**  
ALUMINUM / STEEL

NOTE: REFER TO SYSTEM INSTALLATION MANUAL FOR FABRICATION AND ASSEMBLY INSTRUCTIONS.

**FOUR SEASONS SOLAR PRODUCTS, LLC.**  
5005 VETERANS MEMORIAL HIGHWAY  
HOLBROOK, NY 11741  
PH: (631) 563-4000  
SERIES FSSW8000  
PVC DUAL & SINGLE SLIDING WINDOW

REMARKS	DRWN	CHKD	DATE
INIT ISSUE	TAE	AJP	2/8/21
REV 1	RS	AJP	5/27/21

COPYRIGHT ENGINEERING EXPRESS®

21-36943

SCALE: NTS UNLESS NOTED

10 OF 16

C:\Users\ramez\appdata\local\Temp\AcPublish\_10116121-36943a Vinyl Sliding Window.dwg  
Ramez  
06/08/2021 - 7:22pm

# SILL DETAILS AT 35 PSF

FRANK BENNARDO, P.E.  
PE# 0046549 CA# 9885

06/08/2021

FL#37818.1

**ENGINEERING EXPRESS**  
CORPORATE OFFICE:  
160 SW 12th AVE, SUITE 106  
DEERFIELD BEACH, FL 33442  
(954) 354-0660 | (866) 396-9999  
TEAM@ENGINEERINGEXPRESS.COM  
ENGINEERINGEXPRESS.COM

**FOUR SEASONS SOLAR PRODUCTS, LLC.**  
5005 VETERANS MEMORIAL HIGHWAY  
HOLBROOK, NY 11741  
PH: (631) 563-4000  
SERIES FSSW8000  
PVC DUAL & SINGLE SLIDING WINDOW

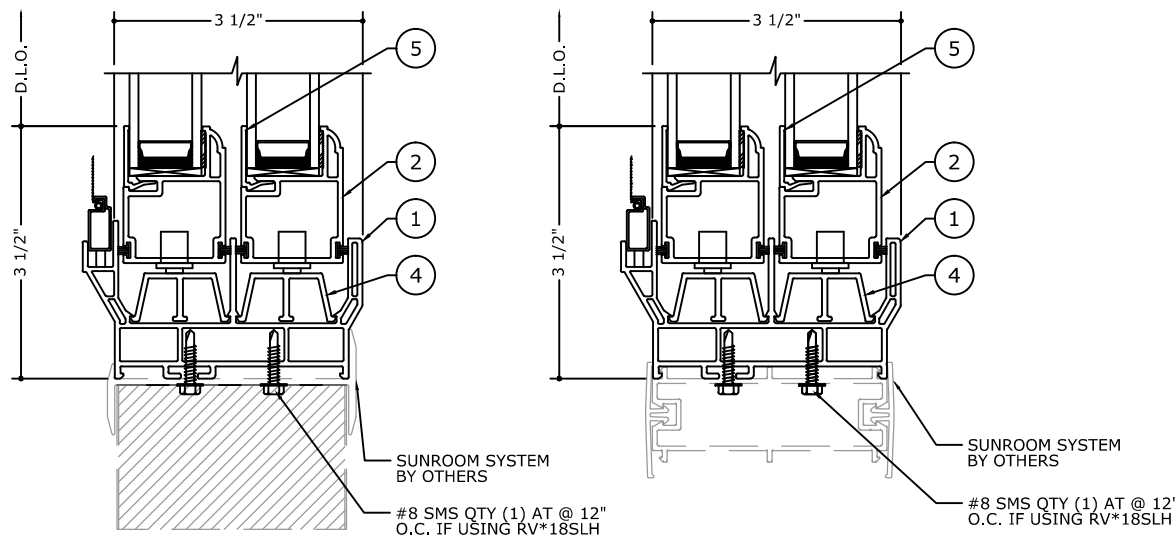
REMARKS	DRWN	CHKD	DATE
INIT ISSUE	TAE	AJP	2/8/21
REV 1	RS	AJP	5/27/21

COPYRIGHT ENGINEERING EXPRESS®

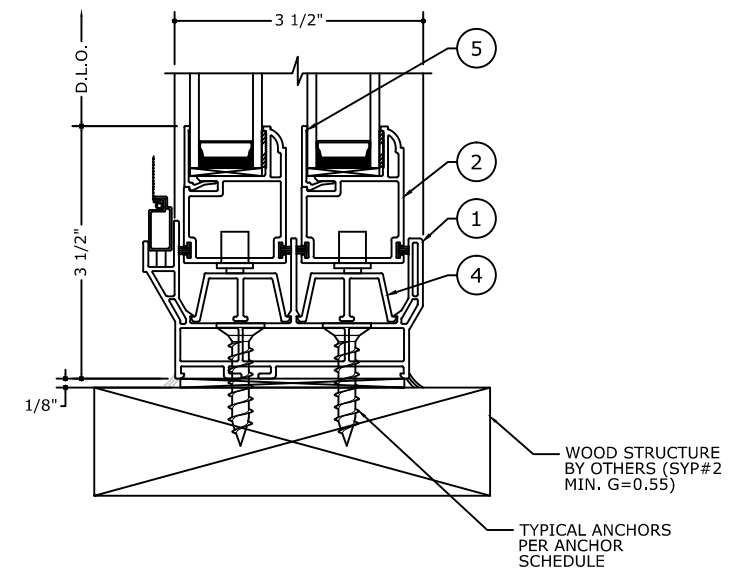
21-36943

SCALE: NTS UNLESS NOTED

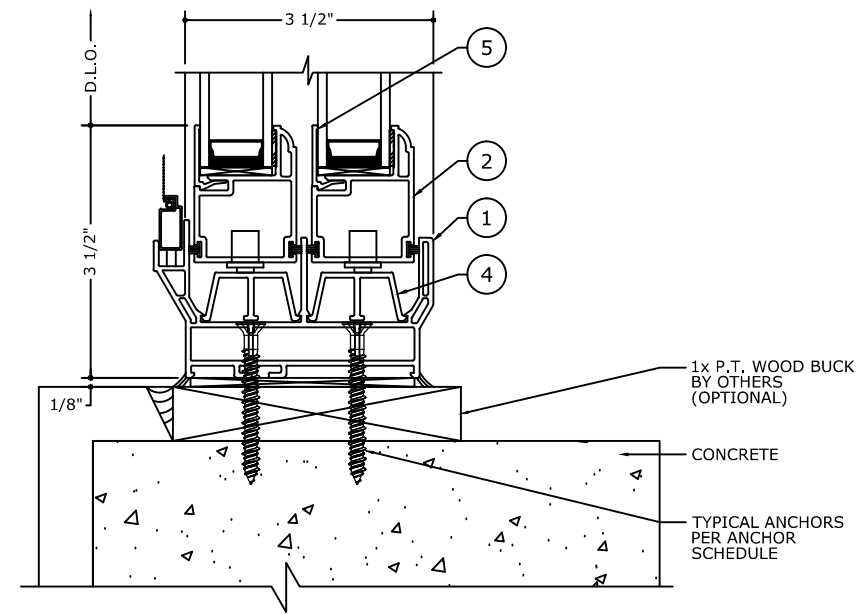
11 OF 16



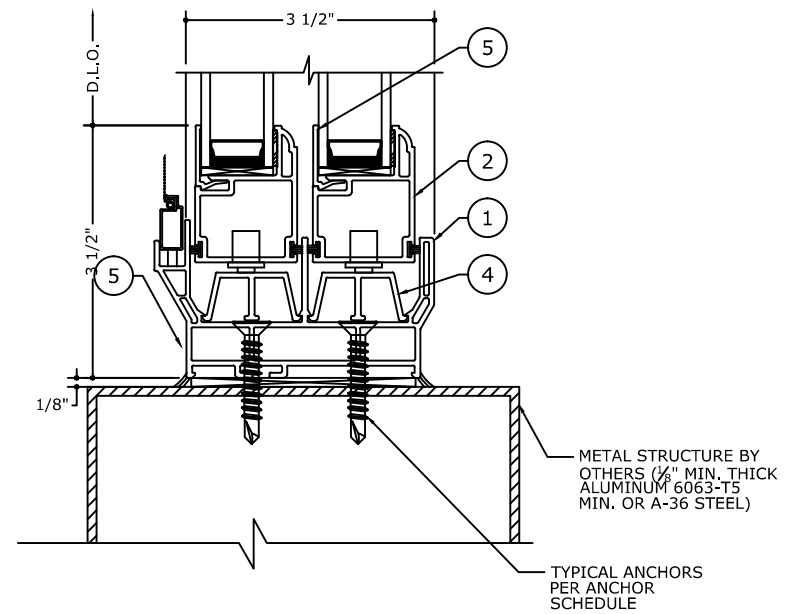
**2 SILL DETAIL**  
SUNROOM CONDITION



**2.1 SILL DETAIL**  
WOOD CONDITION



**2.2 SILL DETAIL**  
CONCRETE CONDITION



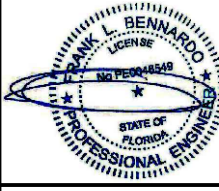
**2.3 SILL DETAIL**  
ALUMINUM /STEEL

NOTE: REFER TO SYSTEM INSTALLATION MANUAL FOR FABRICATION AND ASSEMBLY INSTRUCTIONS.

C:\Users\ramez\appdata\local\temp\AcPublish\_1011616\21-36943a Vinyl Sliding Window.dwg  
Ramez  
06/08/2021 - 7:22pm

# SILL DETAILS AT 40 PSF AND 50 PSF

FRANK BENNARDO, P.E.  
PE# 0046549 CA# 9885



06/08/2021

FL#37818.1

**ENGINEERING EXPRESS**  
CORPORATE OFFICE:  
160 SW 12th AVE, SUITE 106  
DEERFIELD BEACH, FL 33442  
(954) 354-0660 | (866) 396-9999  
TEAM@ENGINEERINGEXPRESS.COM  
ENGINEERINGEXPRESS.COM

**FOUR SEASONS SOLAR PRODUCTS, LLC.**  
5005 VETERANS MEMORIAL HIGHWAY  
HOLBROOK, NY 11741  
PH: (631) 563-4000  
SERIES FSSW8000  
PVC DUAL & SINGLE SLIDING WINDOW

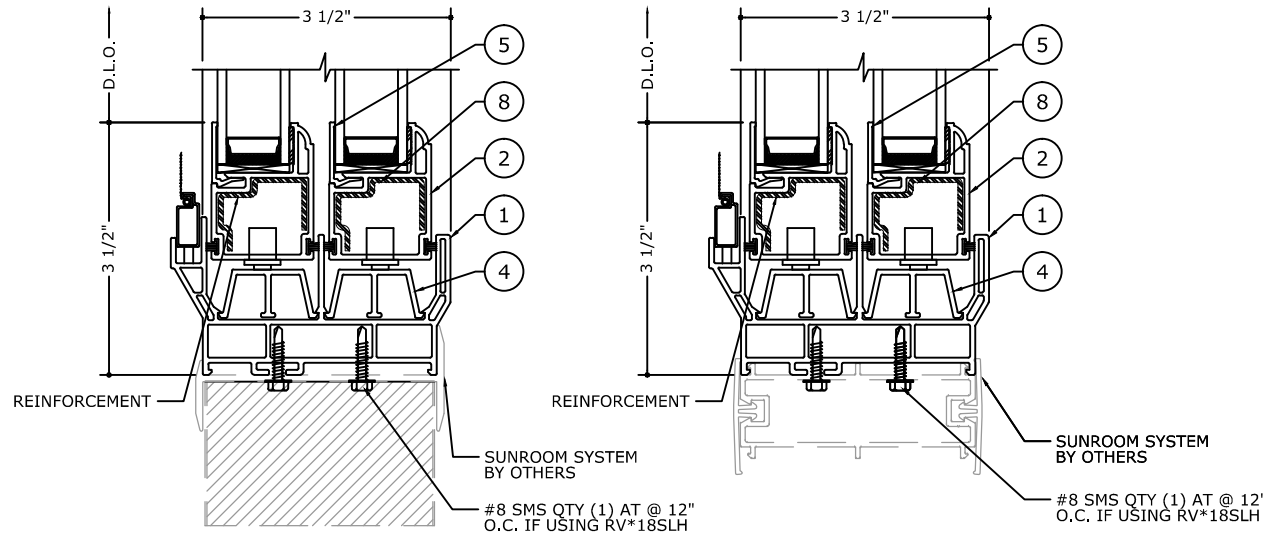
REMARKS	DRWN	CHKD	DATE
INIT ISSUE	TAE	AJP	2/8/21
REV 1	RS	AJP	5/27/21

COPYRIGHT ENGINEERING EXPRESS®

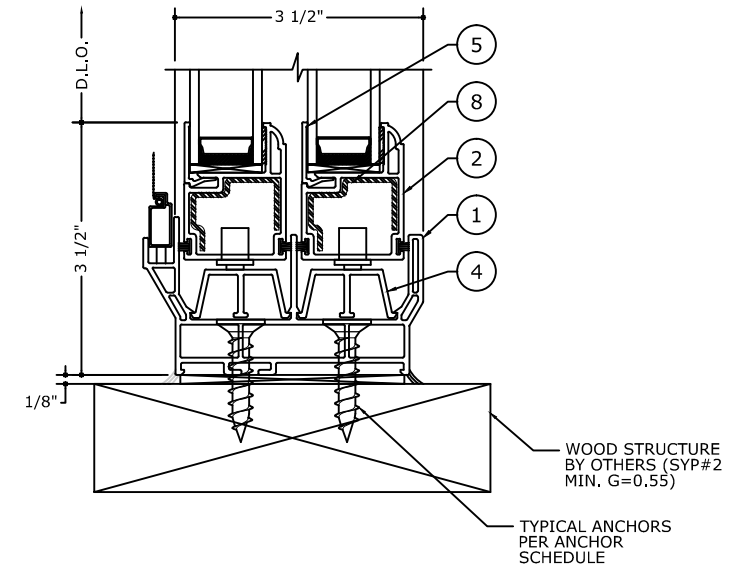
21-36943

SCALE: NTS UNLESS NOTED

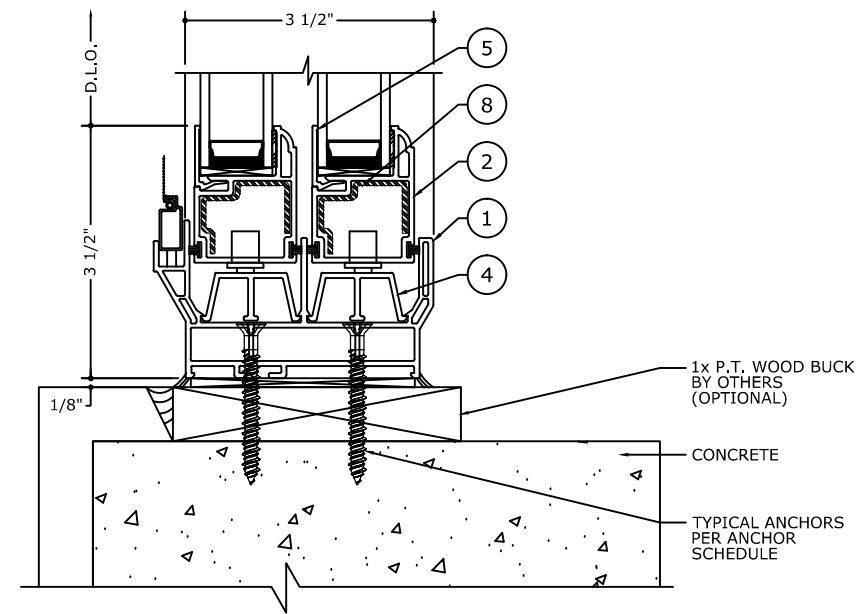
12 OF 16



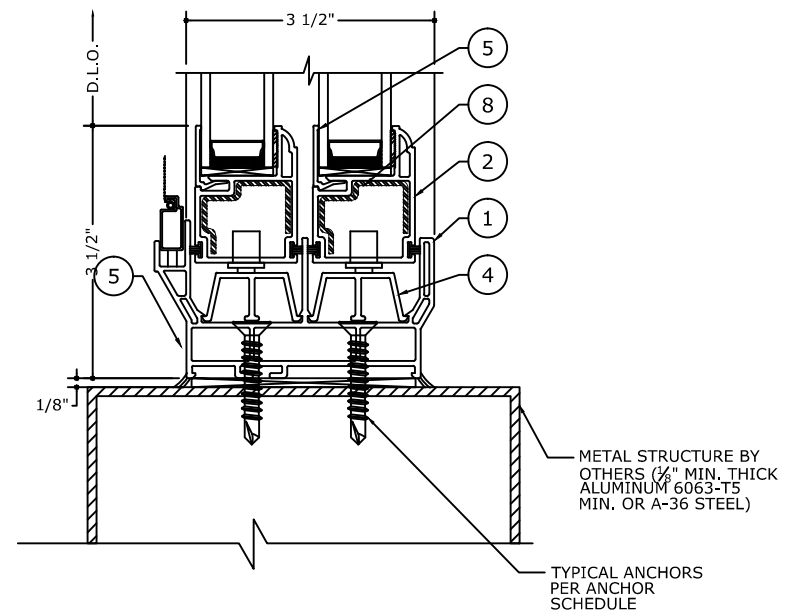
**2 SILL DETAIL**  
SUNROOM CONDITION



**2.1 SILL DETAIL**  
WOOD CONDITION



**2.2 SILL DETAIL**  
CONCRETE CONDITION



**2.3 SILL DETAIL**  
ALUMINUM /STEEL

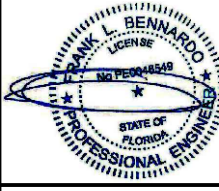
NOTE: REFER TO SYSTEM INSTALLATION MANUAL FOR FABRICATION AND ASSEMBLY INSTRUCTIONS.

C:\Users\ramez\appdata\local\temp\AcPublish\_10116\21-36943a Vinyl Sliding Window.dwg  
Ramez  
06/08/2021 - 7:22pm



# VERTICAL & INTERMEDIATE DETAILS AT 35 PSF

FRANK BENNARDO, P.E.  
PE# 0046549 CA# 9885



06/08/2021

**FL#37818.1**

**ENGINEERING EXPRESS**  
CORPORATE OFFICE:  
160 SW 12th AVE, SUITE 106  
DEERFIELD BEACH, FL 33442  
(954) 354-0660 | (866) 396-9999  
TEAM@ENGINEERINGEXPRESS.COM  
ENGINEERINGEXPRESS.COM

**FOUR SEASONS SOLAR PRODUCTS, LLC.**  
5005 VETERANS MEMORIAL HIGHWAY  
HOLBROOK, NY 11741  
PH: (631) 563-4000  
SERIES FSSW8000  
PVC DUAL & SINGLE SLIDING WINDOW

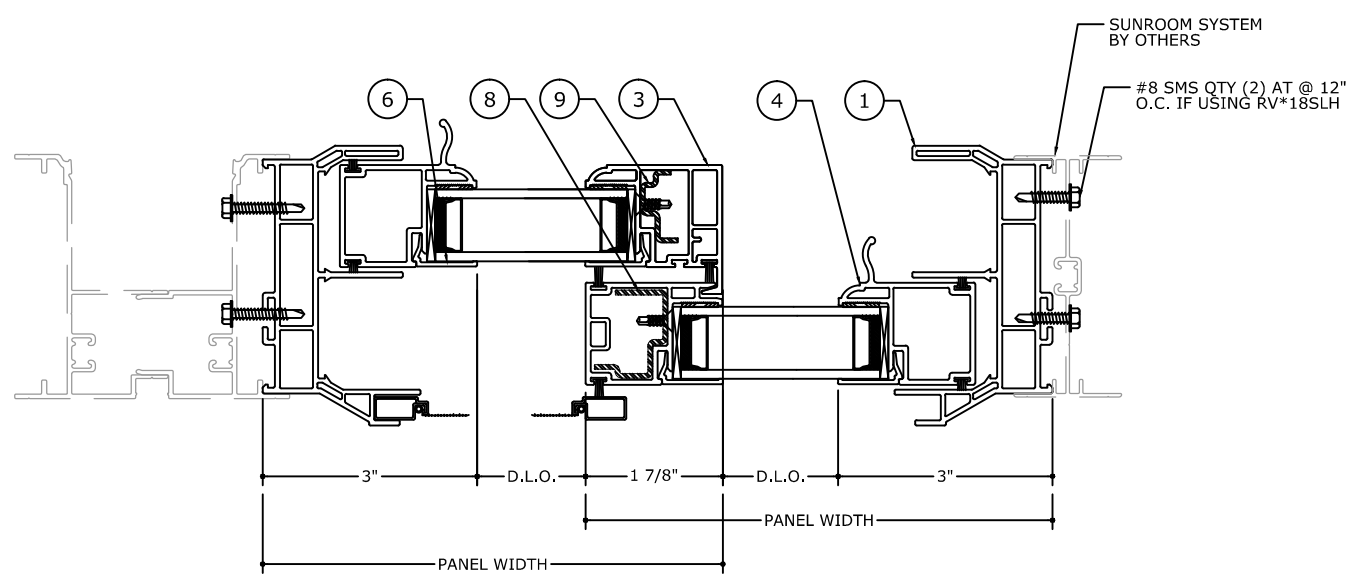
DRWN	CHKD	DATE
TAE	AJP	2/8/21
RS	AJP	5/27/21

COPYRIGHT ENGINEERING EXPRESS®

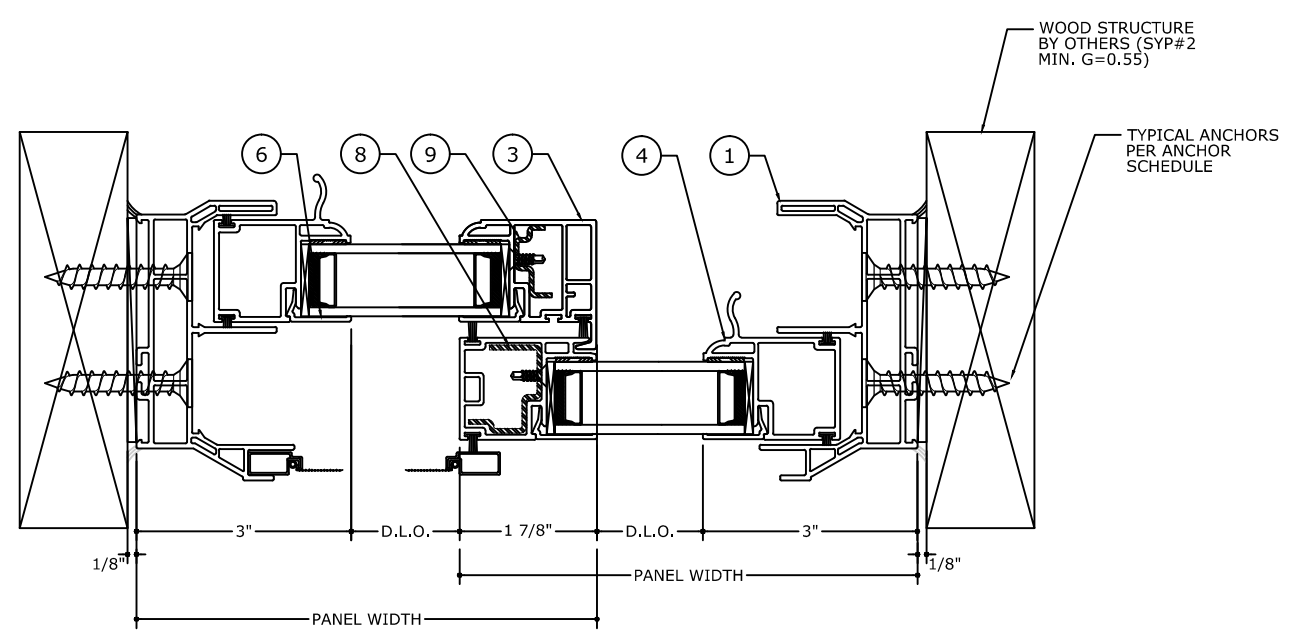
**21-36943**

SCALE: NTS UNLESS NOTED

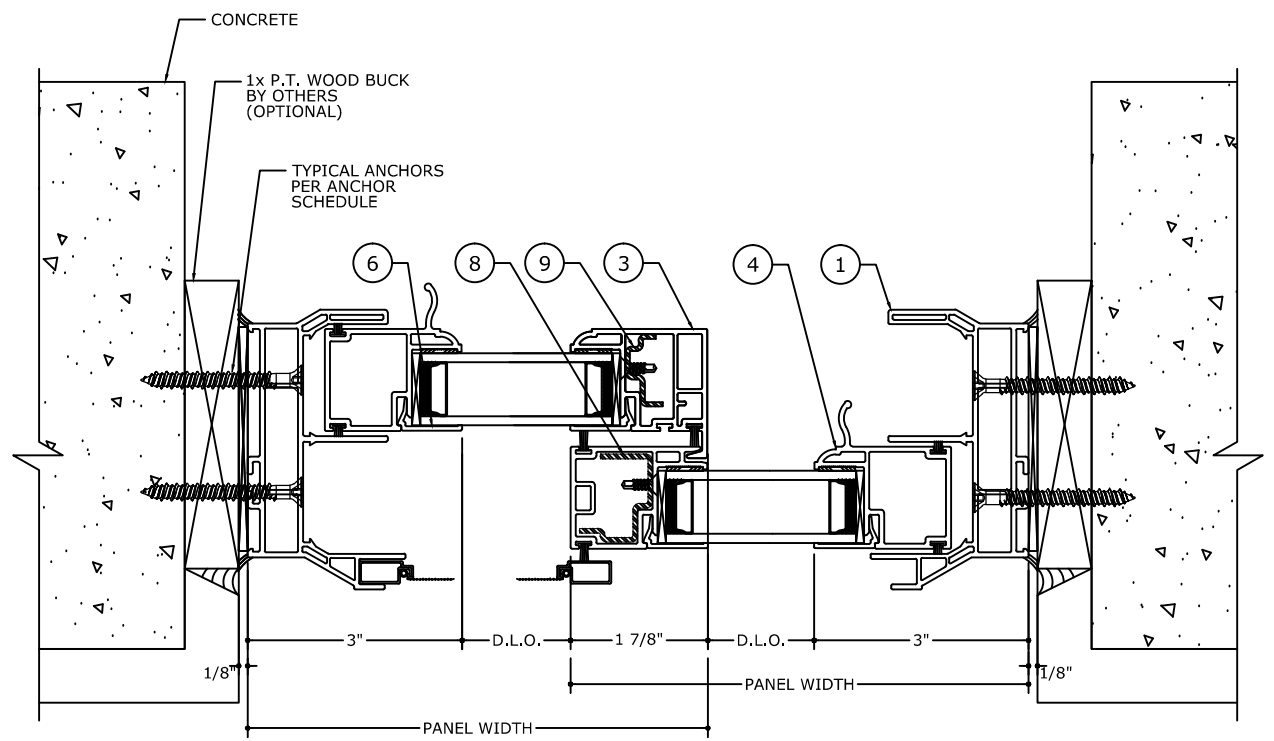
13



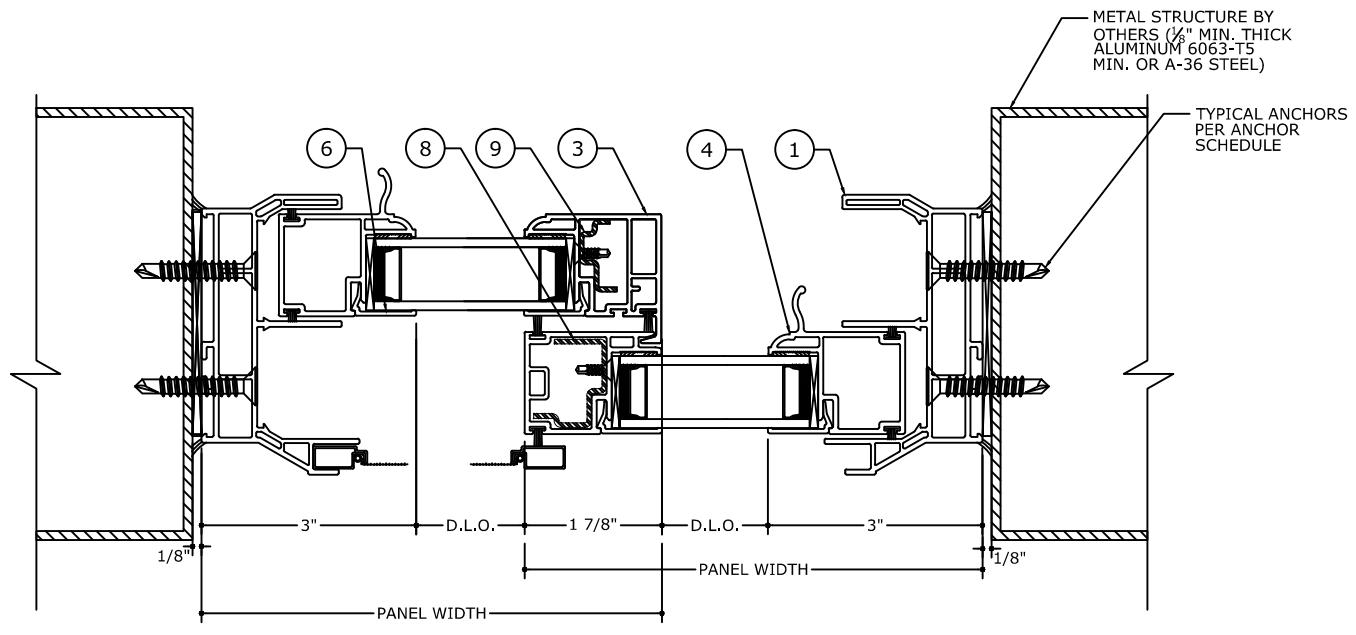
**3 VERTICAL DETAILS**  
SUNROOM CONDITION



**3.1 VERTICAL DETAILS**  
WOOD CONDITION



**3.2 VERTICAL DETAILS**  
CONCRETE CONDITION



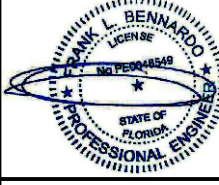
**3.3 VERTICAL DETAILS**  
ALUMINUM /STEEL

NOTE: REFER TO SYSTEM INSTALLATION MANUAL FOR FABRICATION AND ASSEMBLY INSTRUCTIONS.

C:\Users\ramez\appdata\local\temp\AcPublish\_1011616\21-36943a Vinyl Sliding Window.dwg  
Ramez  
06/08/2021 - 7:22pm

# VERTICAL & INTERMEDIATE DETAILS AT 40 PSF AND 50 PSF

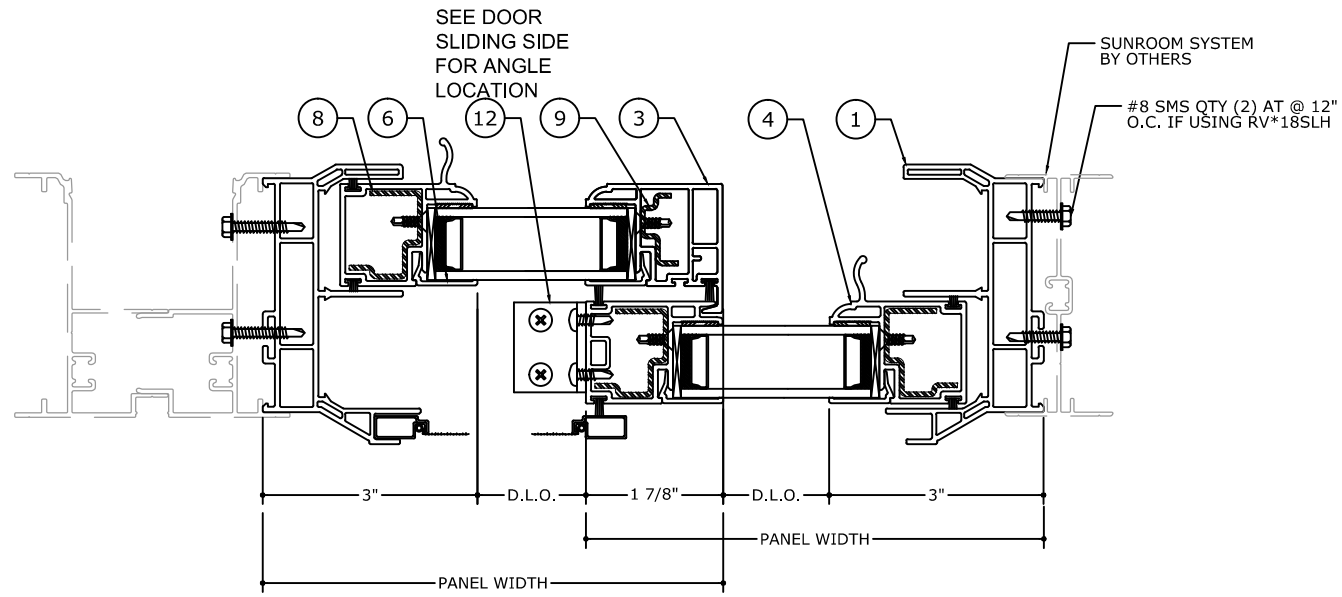
FRANK BENNARDO, P.E.  
PE# 0046549 CA# 9885



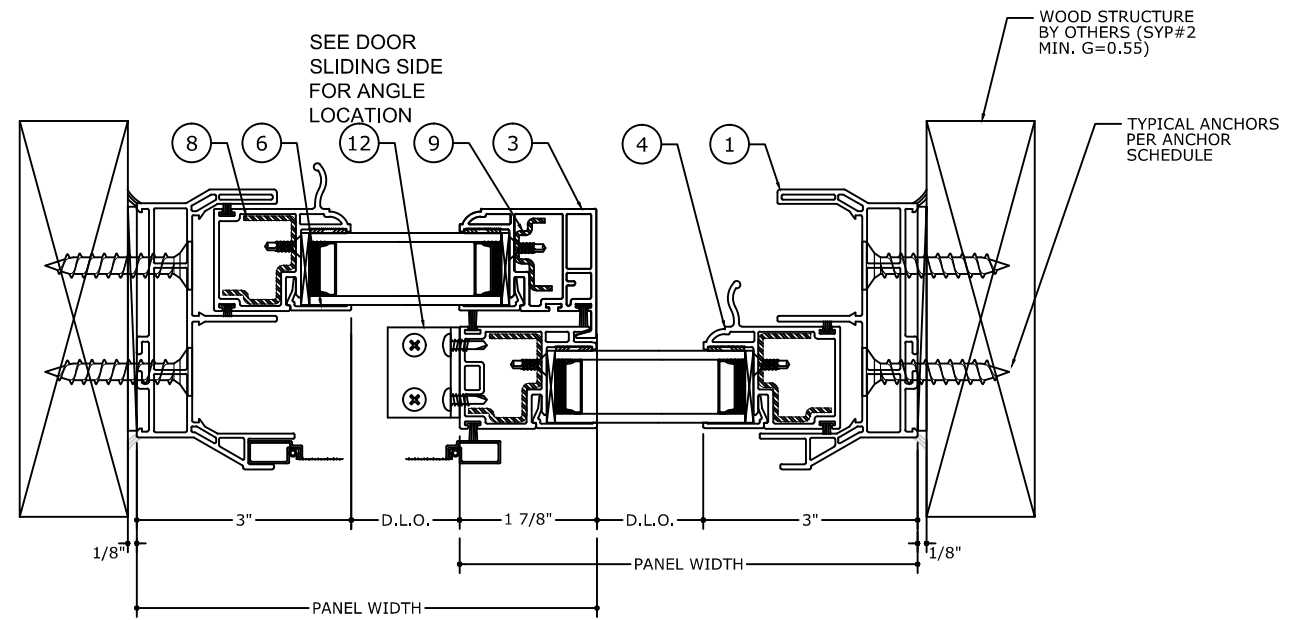
06/08/2021

FL#37818.1

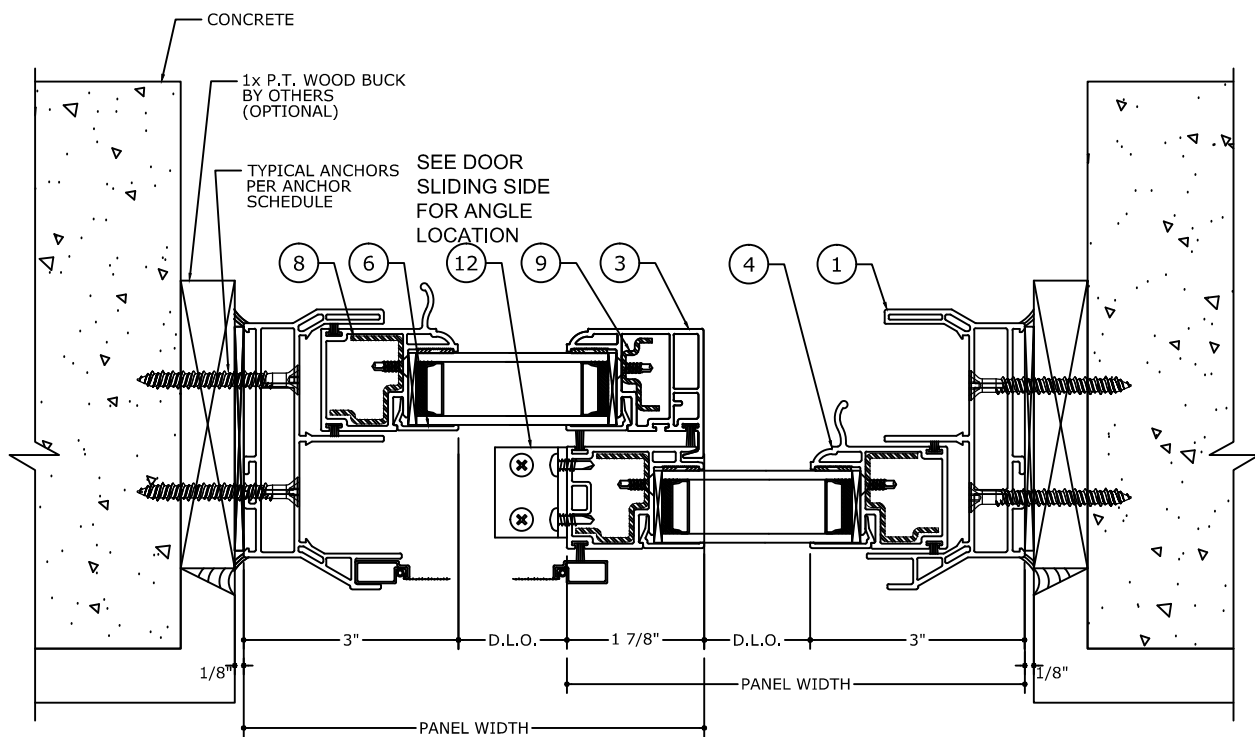
**ENGINEERING EXPRESS**  
CORPORATE OFFICE:  
160 SW 12th AVE, SUITE 106  
DEERFIELD BEACH, FL 33442  
(954) 354-0660 | (866) 396-9999  
TEAM@ENGINEERINGEXPRESS.COM  
ENGINEERINGEXPRESS.COM



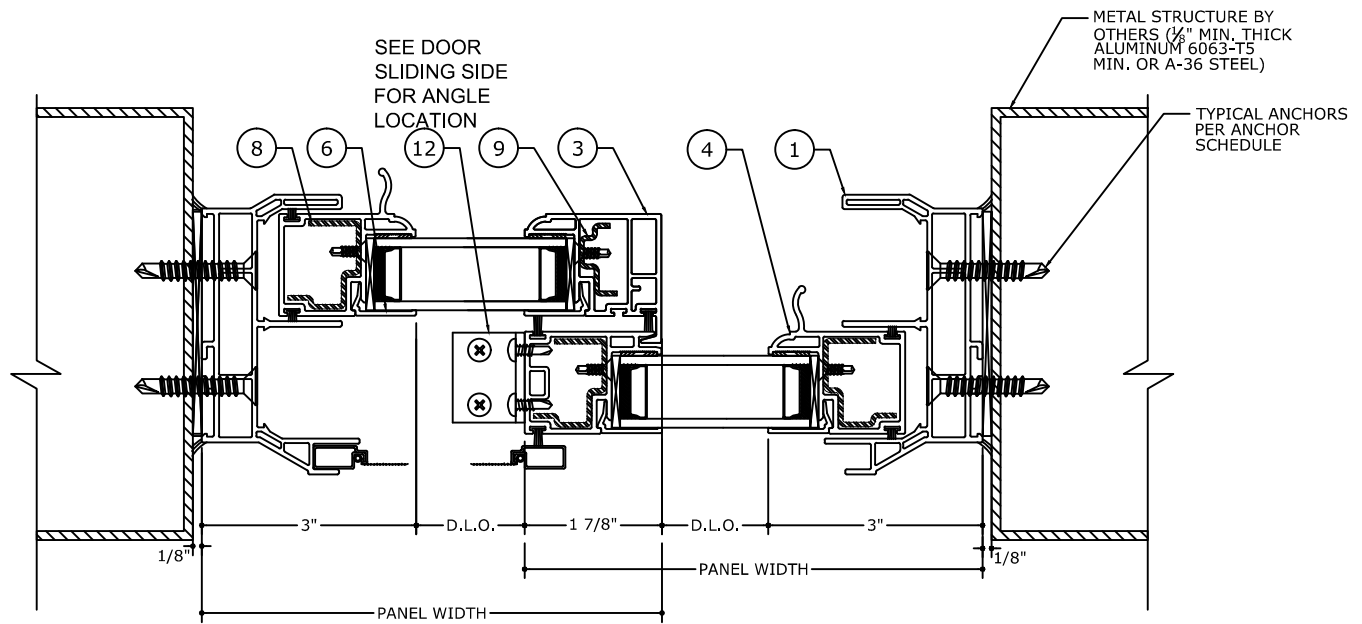
**3 VERTICAL DETAILS**  
SUNROOM CONDITION



**3.1 VERTICAL DETAILS**  
WOOD CONDITION



**3.2 VERTICAL DETAILS**  
CONCRETE CONDITION



**3.3 VERTICAL DETAILS**  
ALUMINUM /STEEL

NOTE: REFER TO SYSTEM INSTALLATION MANUAL FOR FABRICATION AND ASSEMBLY INSTRUCTIONS.

**FOUR SEASONS SOLAR PRODUCTS, LLC.**  
5005 VETERANS MEMORIAL HIGHWAY  
HOLBROOK, NY 11741  
PH: (631) 563-4000  
SERIES FSSW8000  
PVC DUAL & SINGLE SLIDING WINDOW

DRWN	CHKD	DATE
TAE	AJP	2/8/21
RS	AJP	5/27/21

REMARKS  
INIT ISSUE  
REV 1

COPYRIGHT ENGINEERING EXPRESS®

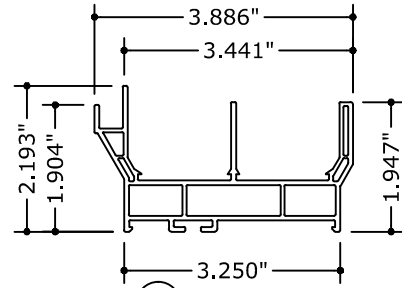
21-36943

SCALE: NTS UNLESS NOTED

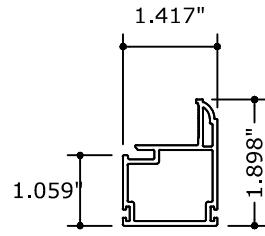
14 OF 16

C:\Users\ramezsl\appdata\local\temp\AcPublish\_1011616\21-36943a Vinyl Sliding Window.dwg  
Ramezsl  
06/08/2021 - 7:22pm

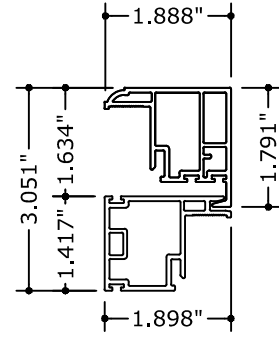
# SYSTEM COMPONENTS



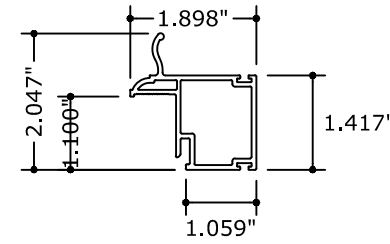
① DS3001  
FRAME



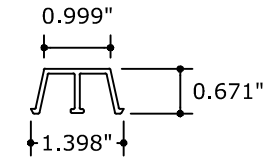
② SE3348  
FRAME



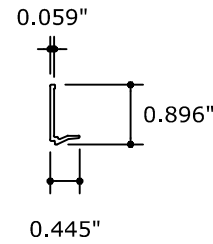
③ SE3349  
FRAME



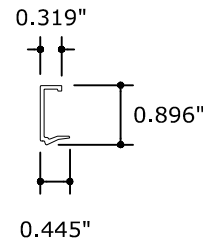
④ SE3350  
FRAME



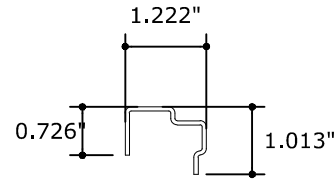
⑤ DS3008  
PIVOT CHAIR



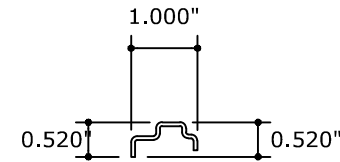
⑥ BV56  
GLAZING BEAD



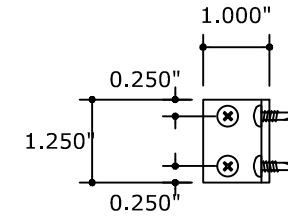
⑦ BV58  
GLAZING BEAD



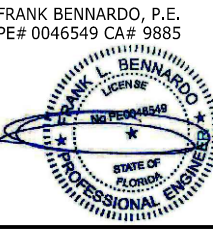
⑧ RF3101 SOM  
REINFORCEMENT



⑨ RF3001 SOM  
REINFORCEMENT



⑫ 1" x 2" x 1/8" ALUMINUM CLIP 6063-T6  
(USE (4) #8 SELF DRILLING SCREWS)



FL#37818.1

**ENGINEERING EXPRESS**  
 CORPORATE OFFICE:  
 160 SW 12th AVE, SUITE 106  
 DEERFIELD BEACH, FL 33442  
 (954) 354-0660 | (866) 396-9999  
 TEAM@ENGINEERINGEXPRESS.COM  
 ENGINEERINGEXPRESS.COM

**FOUR SEASONS SOLAR PRODUCTS, LLC.**  
 5005 VETERANS MEMORIAL HIGHWAY  
 HOLBROOK, NY 11741  
 PH: (631) 563-4000  
 SERIES FSSW8000  
 PVC DUAL & SINGLE SLIDING WINDOW

REMARKS	DRWN	CHKD	DATE
INIT ISSUE	TAE	AJP	2/8/21
REV 1	RS	AJP	5/27/21

COPYRIGHT ENGINEERING EXPRESS®

21-36943

SCALE: NTS UNLESS NOTED

C:\Users\ramez\appdata\local\temp\AcPublish\_10116\21-36943a Vinyl Sliding Window.dwg  
 Ramez  
 06/08/2021 - 7:22pm

FL#37818.1



ENGINEERING EXPRESS®  
CORPORATE OFFICE:  
160 SW 12th AVE, SUITE 106  
DEERFIELD BEACH, FL 33442  
(954) 354-0660 | (866) 396-9999  
TEAM@ENGINEERINGEXPRESS.COM  
ENGINEERINGEXPRESS.COM

BILL OF MATERIALS			
ITEM NO.	PART NUMBER	DESCRIPTION	MATERIAL
01	DS3001	HEAD, SILL, JAMB FRAME	VINYL
02	SE3348	HEAD, SILL, JAMB FRAME	VINYL
03	SE3349	INTERMEDIATE HORIZONTAL FRAME	VINYL
04	SE3350	JAMB FRAME	VINYL
05	DS3008	PIVOT CHAIR	VINYL
06	BV56	GLAZING BEAD (1")	VINYL
07	BV58	GLAZING BEAD (3/4")	VINYL
08	RF3101 SOM	FORMED STEEL REINFORCEMENT	A36
09	RF3001 SOM	FORMED STEEL REINFORCEMENT	A36
10	GLAZING SHIM	TREMCO GLAZING SHIM	-
11	DOUBLE FACE TAPE	ARLON, ADHESIVE RESEARCH, VENTURE	-
12	ANGLE CLIP	1" x 2" x 1/8" ALUMINUM CLIP (USE #8 SELF DRILLING SCREWS)	6063-T6

**FOUR SEASONS SOLAR PRODUCTS, LLC.**  
5005 VETERANS MEMORIAL HIGHWAY  
HOLBROOK, NY 11741  
PH: (631) 563-4000

SERIES FSSW8000  
PVC DUAL & SINGLE SLIDING WINDOW

REMARKS	DRWN		CHKD		DATE
	TAE	AJP	RS	AJP	
INIT ISSUE					2/8/21
REV 1					5/27/21

COPYRIGHT ENGINEERING EXPRESS®

21-36943

SCALE: NTS UNLESS NOTED