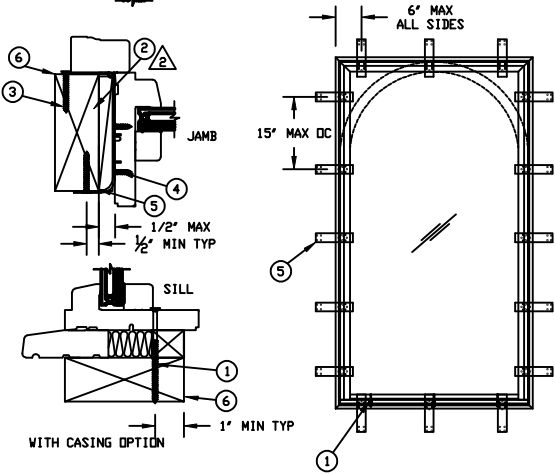
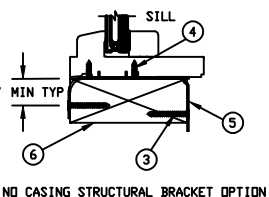


STRUCTURAL BRACKET INSTALLATION



STRUCTURAL BRACKET INSTALLATION METHOD:

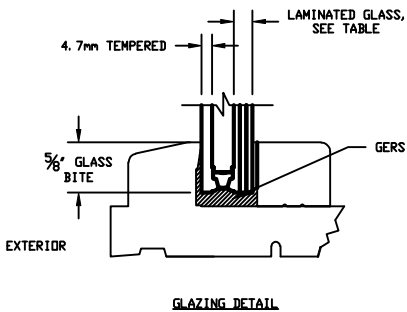
- UNIT MUST NOT BE IN DIRECT CONTACT WITH EITHER CONCRETE OR TREATED BUCK MATERIAL. IF SHIM SPACE IS LESS THAN 1/8" WRAPPING THE UNIT ON ALL 4 SIDES WITH WINDOW FLASHING TAPE IS REQUIRED AS A BARRIER BETWEEN THE UNIT AND CONCRETE OR TREATED LUMBER.
- MINIMUM OF 2 BRACKETS PER SIDE.
- ATTACH TO THE UNIT WITH TWO #8 X 3/8" SCREWS.
- ATTACH TO THE BUCK WITH TWO #8 X 1 1/2" SCREWS ON EACH SIDE OF THE BUCK.
- SCREWS MUST HAVE FULL EMBEDMENT
- IF USING CASING, SECURE SILL WITH #8 X 3" SCREWS LOCATED 6" FROM CORNERS AND 15" ON CENTER.



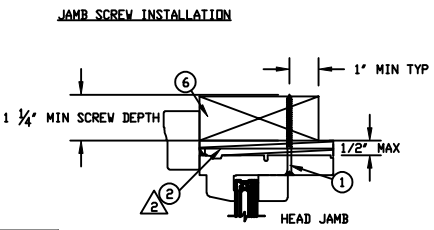
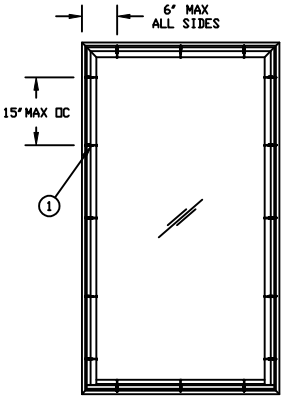
NO CASING STRUCTURAL BRACKET OPTION

UNIT	MAX FRAME SIZE	DP RATING	GLASS OPTION
UL WD DIR GLZ POLY IZ3	73 X 73 15/16	+55/-65	TYPE A

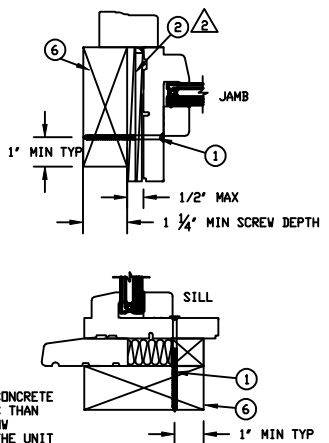
TYPE	LAMINATED GLASS MAKE UP
A	3.9mm(.156") ANN + .090 KURARAY SGP + 3.9mm(.156") ANN



GLAZING DETAIL



JAMB SCREW INSTALLATION



JAMB SCREW INSTALLATION METHOD:

- UNIT MUST NOT BE IN DIRECT CONTACT WITH EITHER CONCRETE OR TREATED BUCK MATERIAL. IF SHIM SPACE IS LESS THAN 1/8" WRAPPING THE UNIT ON ALL 4 SIDES WITH WINDOW FLASHING TAPE IS REQUIRED AS A BARRIER BETWEEN THE UNIT AND CONCRETE OR TREATED LUMBER.
- MINIMUM OF 2 PER SIDE.
- SECURE ALL SIDES WITH #8 X 3" SCREWS.
- SHIM AT EACH SCREW LOCATION.

CATEGORY:
DIRECT GLAZE
UNIT TYPE:
UWDGPOLYI23

MARVIN RESEARCH & DEVELOPMENT

COLLECTION: ULTIMATE

DWG TYPE: INSTALLATION
DESCRIPTION: INSTALLATION UWDGPOLY IZ3

CHK:	SIZE: B	CLASS: MISC	DWG NO: 00127699
APP:	SCALE: NA	DATE: 02/09/21	DWG BY: KOMPELIEN, SARA SHEET: 1 OF 1

UNSPECIFIED TOLERANCES

DECIMALS:	ANGLE DEG:
XX ± .03	± .5
XXX ± .012	
LINEAL:	FAB LINEAL:
+ .125	± NA
- .000	
MATERIAL:	NA

ITEM NO	REF NO	DESCRIPTION
6	-----	2X WOOD BUCK BY OTHERS
5	-----	STRUCTURAL BRACKET
4	-----	#8 X 5/8" SCREW
3	-----	#8 x 1 1/2" SCREW
2	-----	SHIM
1	-----	#8 X 3.000" WOOD SCREW

NOTES:

- THIS PRINT IS FOR STRUCTURAL PERFORMANCE ONLY. FOR FLASHING & SEALING INSTRUCTIONS, REFER TO THE INSTALLATION INSTRUCTIONS.
- SHIMS-PLACE A SHIM WITHIN 4-6 INCHES OF EACH CORNER AND SPACE ALL OTHERS EVENLY A MAXIMUM OF 15" APART.
- IF CHEMICALLY TREATED LUMBER IS USED FOR BUCK MATERIAL, FASTENERS INTO THE BUCK MUST BE A MINIMUM OF 0.90 OZ/FT² ZINC HOT DIPPED GALVANIZED OR STAINLESS STEEL TYPE 304 OR 316.
- RECTANGULAR UNIT SHOWN, SHAPED UNITS ALSO APPLY.