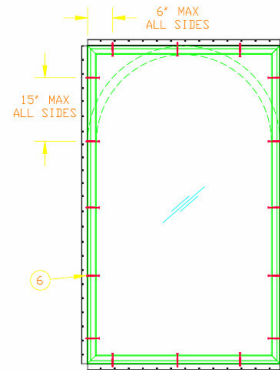
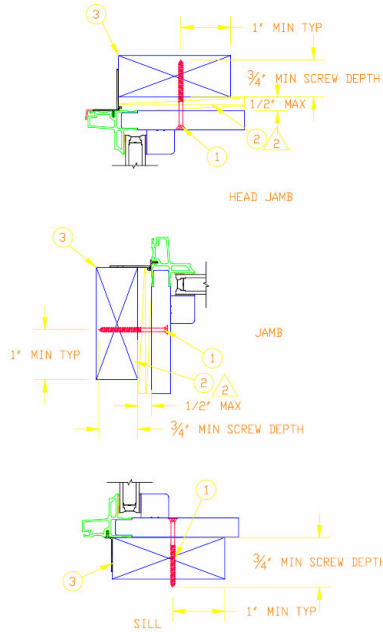
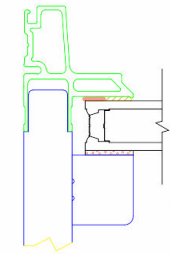


JAMB SCREW INSTALLATION



JAMB SCREW INSTALLATION METHOD:  
 - UNIT MUST NOT BE IN DIRECT CONTACT WITH EITHER CONCRETE OR TREATED BUCK MATERIAL. IF SHIM SPACE IS LESS THAN 1/8\"/>



\*GLASS COMPLIES WITH ASTM E1300\*

UNIT	MAX FRAME SIZE	DP RATING
UL DIR GLZ NF RECT	76 X 120 DR 120 X 76	+50/-50
UL DIR GLZ RECT	97 X 84 DR 84 X 97	+50/-60
UL DIR GLZ POLY	97 X 84 DR 84 X 97	+50/-60
UL DIR GLZ RECT	63 1/16 X 145 9/16	+50/-60
UL DIR GLZ POLY	63 1/16 X 145 9/16	+50/-60
UL DIR GLZ RECT	145 9/16 X 63 1/16	+50/-60
UL DIR GLZ POLY	145 9/16 X 63 1/16	+50/-60
UL DIR GLZ RECT	68 9/16 X 110 9/16	+50/-60
UL DIR GLZ POLY	68 9/16 X 110 9/16	+50/-60
UL DIR GLZ RECT	110 9/16 X 68 9/16	+50/-60
UL DIR GLZ POLY	110 9/16 X 68 9/16	+50/-60
UL DIR GLZ RT	97 X 84 DR 84 X 97	+50/-60

**CATEGORY:**  
DIRECT GLAZE  
**UNIT TYPE:**  
UDGPOLY, UDGRT, UDGRECT, UDGNFRECT

UNSPECIFIED TOLERANCES

DECIMALS: XX ± .03 XXX ± .012	ANGLE DEG: ± .5
LINEAL: + .125 - .000	FAB LINEAL: ± NA

MATERIAL:  
NA

**MARVIN** RESEARCH & DEVELOPMENT

COLLECTION: ULTIMATE

DWG TYPE: INSTALLATION  
DESCRIPTION: INSTALLATION UDG

CHK:	SIZE: B	CLASS: MISC	DWG NO: 00127686
APP:	SCALE: NA	DATE: 02/09/21	DWG BY: KOMPELIEN, SARA

SHEET: 1 OF 1

ITEM NO	REF NO	DESCRIPTION
3	-----	WOOD BUCK BY OTHERS
2	-----	SHIM
1	-----	#8 X 2 1/2" SCREW

NOTES:  
 1. THIS PRINT IS FOR STRUCTURAL PERFORMANCE ONLY. FOR FLASHING & SEALING INSTRUCTIONS, REFER TO THE INSTALLATION INSTRUCTIONS.  
 2. SHIMS  
 -PLACE A SHIM WITHIN 4-6 INCHES OF EACH CORNER AND SPACE ALL OTHERS EVENLY A MAXIMUM OF 15" APART.  
 3. IF CHEMICALLY TREATED LUMBER IS USED FOR BUCK MATERIAL, FASTENERS INTO THE BUCK MUST BE A MINIMUM OF 0.90 OZ/FT<sup>2</sup> ZINC HOT DIPPED GALVANIZED OR STAINLESS STEEL TYPE 304 OR 316.

**NOTICE - CONFIDENTIAL INFORMATION**  
 The information in this document is privileged and strictly confidential. The information contained herein shall be used only by Marvin Windows and Doors employees and by those agents or suppliers granted official written permission. If the reader of this document is not the intended recipient, or the employee or agent of the intended recipient, please delete this document from all data storage devices, and destroy all hard copies. Any unauthorized dissemination, distribution, copying or other use of the information contained in this document is strictly prohibited.