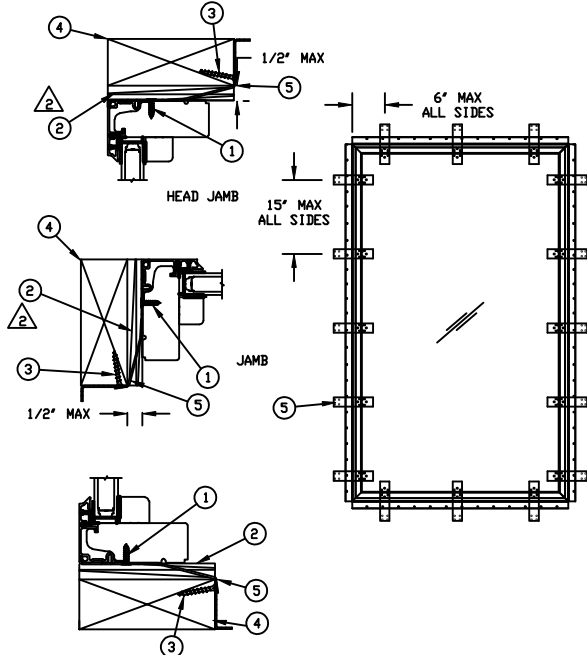


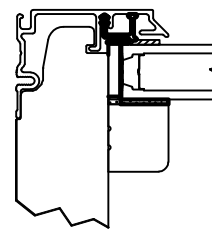
**STRUCTURAL BRACKET INSTALLATION**



- STRUCTURAL BRACKET INSTALLATION METHOD:**
- UNIT MUST NOT BE IN DIRECT CONTACT WITH EITHER CONCRETE OR TREATED BUCK MATERIAL. IF SHIM SPACE IS LESS THAN 1/8" WRAPPING THE UNIT ON ALL 4 SIDES WITH WINDOW FLASHING TAPE IS REQUIRED AS A BARRIER BETWEEN THE UNIT AND CONCRETE OR TREATED LUMBER.
  - MINIMUM OF 2 BRACKETS PER SIDE.
  - ATTACH TO THE UNIT WITH TWO #8 X 3/8" SCREWS.
  - ATTACH TO THE BUCK WITH TWO #8 X 1.625" SCREWS ON EACH SIDE OF THE BUCK.
  - ALL SCREWS MUST BE FULLY EMBEDDED.

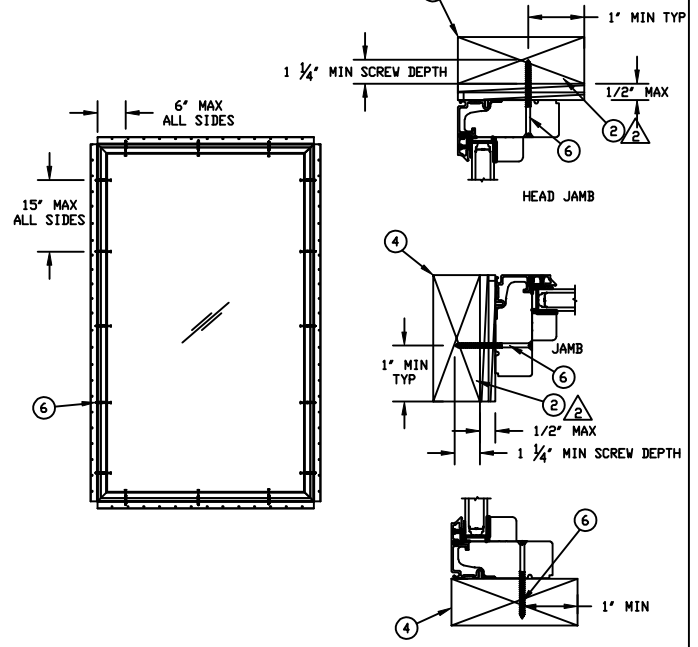
- NOTES:**
1. THIS PRINT IS FOR STRUCTURAL PERFORMANCE ONLY. FOR FLASHING & SEALING INSTRUCTIONS, REFER TO THE INSTALLATION INSTRUCTIONS.
  2. SHIMS  
- PLACE A SHIM WITHIN 4-6 INCHES OF EACH CORNER AND SPACE ALL OTHERS EVENLY A MAXIMUM OF 15" APART.
  3. IF CHEMICALLY TREATED LUMBER IS USED FOR BUCK MATERIAL, FASTENERS INTO THE BUCK MUST BE A MINIMUM OF 0.90 OZ/FT<sup>2</sup> ZINC HOT DIPPED GALVANIZED OR STAINLESS STEEL TYPE 304 OR 316.

UNIT	MAX FRAME SIZE	DP RATING
UL DIR GLZ NF	76 X 120 OR 120 X 76	+50/-50



\*GLASS COMPLIES WITH ASTM E1300\*  
**GLAZING DETAIL**

**JAMB SCREW INSTALLATION**




- JAMB SCREW INSTALLATION METHOD:**
- UNIT MUST NOT BE IN DIRECT CONTACT WITH EITHER CONCRETE OR TREATED BUCK MATERIAL. IF SHIM SPACE IS LESS THAN 1/8" WRAPPING THE UNIT ON ALL 4 SIDES WITH WINDOW FLASHING TAPE IS REQUIRED AS A BARRIER BETWEEN THE UNIT AND CONCRETE OR TREATED LUMBER.
  - MINIMUM OF 2 PER SIDE.
  - SECURE JAMBS AND HEAD JAMBS WITH #8 X 3" SCREWS.
  - SECURE THE SILL WITH #8 X 3" SCREWS.
  - SHIM AT EACH SCREW LOCATION.

**CATEGORY:**  
DIRECT GLAZE

**UNIT TYPE:**  
UDGNF

6	-----	#8 X 3" SCREW
5	-----	MASONRY CLIP
4	-----	WOOD BUCK BY OTHERS
3	-----	#8 X 1.625" SCREW
2	-----	SHIM
1	-----	#8 X 5/8" SCREW
ITEM NO	REF NO	DESCRIPTION

UNSPECIFIED TOLERANCES	
DECIMALS: XX ± .03 XXX ± .012	ANGLE DEG: ± .5
LINEAL: + .125 - .000	FAB LINEAL: ± NA
MATERIAL: NA	

MARVIN 		RESEARCH & DEVELOPMENT	
Windows and Doors		WARROD, MN, USA, (218) 386-4021	
<b>PRODUCT CATEGORY:</b>		ULTIMATE	
<b>UNIT TYPE:</b>		INSTALLATION INSTALLATION UDGNF	
<b>DWG TYPE:</b> DESCRIPTION:			
<b>CHK:</b>	<b>SIZE:</b> B	<b>CLASS:</b> MISC	<b>DWG NO:</b> 00108332
<b>APP:</b>	<b>SCALE:</b> NA	<b>DATE:</b> 05/10/11	<b>DWG BY:</b> BAIN, JASON
			<b>SHEET:</b> 1 OF 1

**NOTICE - CONFIDENTIAL INFORMATION**

The information in this document is privileged and strictly confidential. The information contained herein shall be used only by Marvin Windows and Doors employees and by those agents or suppliers granted official written permission. If the reader of this document is not the intended recipient, or the employee or agent of the intended recipient, please delete this document from all data storage devices, and destroy all hard copies. Any unauthorized dissemination, distribution, copying or other use of the information contained in this document is strictly prohibited.