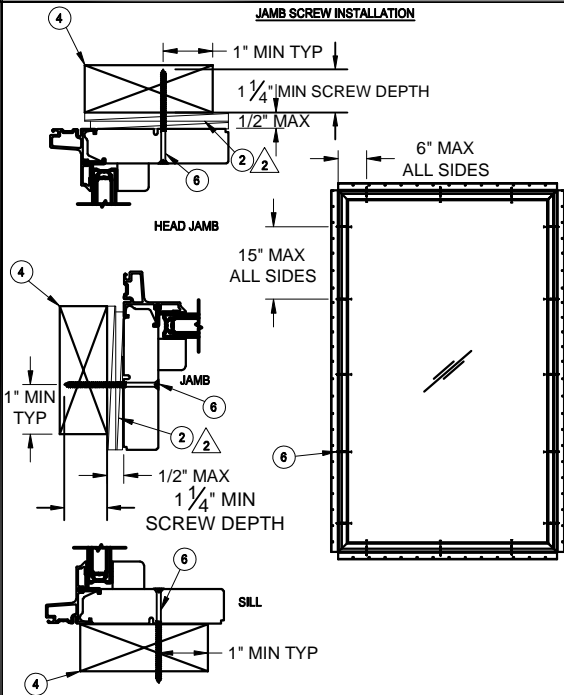
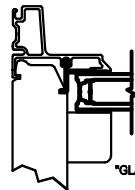
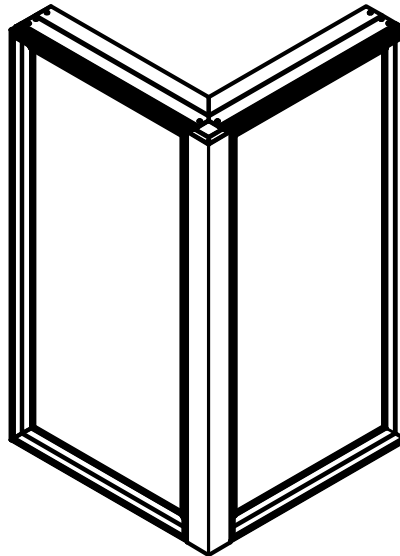


**JAMB SCREW INSTALLATION**



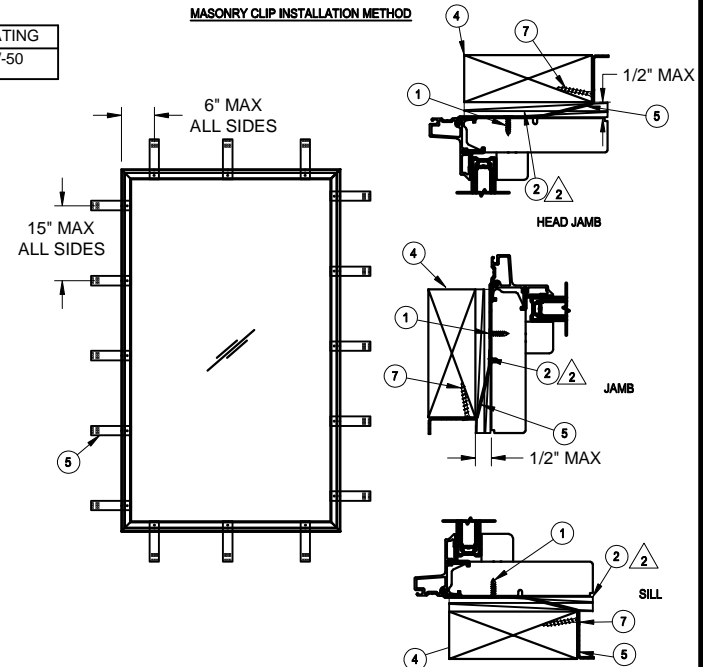
UNIT	MAX FRAME SIZE	MAX WIDTH A1	MAX WIDTH A2	DP RATING
UL DIR GLZ CNR	82 1/4 X 97	82 1/4	82 1/4	+50/-50



**GLAZING DETAIL**

\*GLASS COMPLIES WITH ASTM E1300\*

**MASONRY CLIP INSTALLATION METHOD**



**MASONRY CLIP INSTALLATION METHOD:**

- UNIT MUST NOT BE IN DIRECT CONTACT WITH EITHER CONCRETE OR TREATED BUCK MATERIAL. IF SHIM SPACE IS LESS THAN 1/8" WRAPPING THE UNIT ON ALL 4 SIDES INCLUDING CLADDING WITH WINDOW FLASHING TAPE IS REQUIRED AS A BARRIER BETWEEN THE UNIT AND CONCRETE OR TREATED LUMBER.
- MINIMUM OF 2 FASTENERS PER SIDE.
- APPLY 3/8" PLYWOOD FILL BLOCK TO HEAD JAMB WITH TWO 5/16" BEADS OF STRUCTURAL ADHESIVE. ATTACH HEAD JAMB CLIPS WITH A #8 X 7/8" SCREW.
- LOCK LEG OF MASONRY CLIP INTO KERF ON CLADDING.
- ATTACH CLIPS TO JAMBS WITH TWO #8 X 5/8" SCREWS.
- WRAP CLIP TO THE INTERIOR AND PREDRILL TWO 5/32" HOLES FOR SCREWS.
- ATTACH THE CLIP TO THE BUCK WITH TWO 1 5/8" SHEET ROCK SCREWS OR TWO #8 X 1 1/2" SHEET METAL SCREWS. SEE NOTE #3 BELOW IF FASTENING INTO TREATED LUMBER.
- MINIMUM OF 2 CLIPS PER SIDE.
- SCREWS MUST BE FULLY EMBEDDED.

- JAMB SCREW INSTALLATION METHOD:**
- UNIT MUST NOT BE IN DIRECT CONTACT WITH EITHER CONCRETE OR TREATED BUCK MATERIAL. IF SHIM SPACE IS LESS THAN 1/8" WRAPPING THE UNIT ON ALL 4 SIDES WITH WINDOW FLASHING TAPE IS REQUIRED AS A BARRIER BETWEEN THE UNIT AND CONCRETE OR TREATED LUMBER.
  - MINIMUM OF 2 PER SIDE.
  - SECURE JAMBS AND HEAD JAMBS WITH #8 X 3" SCREWS.
  - SECURE THE SILL WITH #8 X 3" SCREWS.
  - SHIM AT EACH SCREW LOCATION.

**CATEGORY:**  
DIRECT GLAZE

**UNIT TYPE:**  
UDGCNR

**UNSPECIFIED TOLERANCES**

7	-----	1. 625 SHEET ROCK SCREW
6	-----	#8 X 3" SCREW
5	-----	MASONRY CLIP
4	-----	WOOD BUCK BY OTHERS
3	-----	#8 X 1 1/2" SCREW
2	-----	SHIM
1	-----	#8 X 5/8" SCREW
ITEM NO	REF NO	DESCRIPTION

DECIMALS:	ANGLE DEG:
XX ± .03	± .5
XXX ± .012	
LINEAL:	FAB LINEAL:
+ .125	± NA
- .000	
MATERIAL:	NA

<b>MARVIN</b> Windows and Doors		<b>RESEARCH &amp; DEVELOPMENT</b> WARROAD, MN, USA, (218) 386-4021	
<b>PRODUCT CATEGORY:</b>	ULTIMATE	<b>UNIT TYPE:</b>	INSTALLATION
<b>DESCRIPTION:</b>	INSTALLATION UDGCNR	<b>DWG NO:</b>	00112934
<b>CHK:</b>	<b>SIZE:</b> B	<b>CLASS:</b> MISC	<b>DWG BY:</b> KNUTSON, BRUCE
<b>APP:</b>	<b>SCALE:</b> NA	<b>DATE:</b> 05/02/18	<b>SHEET:</b> 1 OF 1

- NOTES:**
- THIS PRINT IS FOR STRUCTURAL PERFORMANCE ONLY. FOR FLASHING & SEALING INSTRUCTIONS, REFER TO THE INSTALLATION INSTRUCTIONS.
  - SHIMS  
-PLACE A SHIM WITHIN 4-6 INCHES OF EACH CORNER AND SPACE ALL OTHERS EVENLY A MAXIMUM OF 15" APART.
  - IF CHEMICALLY TREATED LUMBER IS USED FOR BUCK MATERIAL, FASTENERS INTO THE BUCK MUST BE A MINIMUM OF 0.90 OZ/FT<sup>2</sup> ZINC HOT DIPPED GALVANIZED OR STAINLESS STEEL TYPE 304 OR 316.

**NOTICE - CONFIDENTIAL INFORMATION**

The information in this document is privileged and strictly confidential. The information contained herein shall be used only by Marvin Windows and Doors employees and by those agents or suppliers granted official written permission. If the reader of this document is not the intended recipient, or the employee or agent of the intended recipient, please delete this document from all data storage devices, and destroy all hard copies. Any unauthorized dissemination, distribution, copying or other use of the information contained in this document is strictly prohibited.