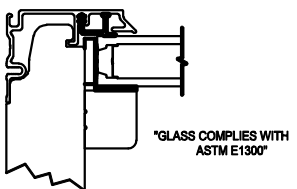
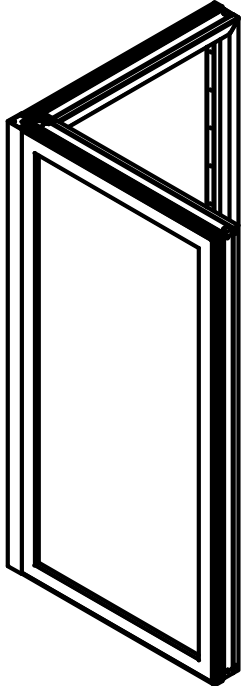


UNIT	MAX FRAME SIZE	MAX WIDTH A1	MAX WIDTH A2	DP RATING
UL DIR GLZ NF CNR	75 1/2 X 120	75 1/2	75 1/2	+50/-50



GLAZING DETAIL

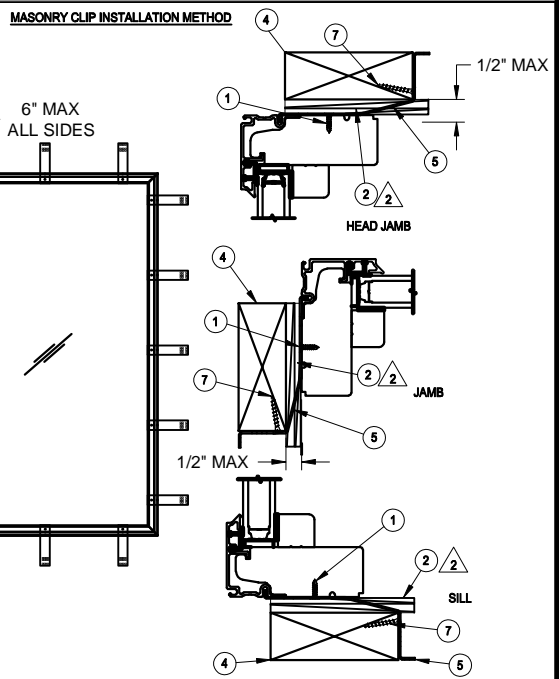
**JAMB SCREW INSTALLATION METHOD:**  
 - UNIT MUST NOT BE IN DIRECT CONTACT WITH EITHER CONCRETE OR TREATED BUCK MATERIAL. IF SHIM SPACE IS LESS THAN 1/8" WRAPPING THE UNIT ON ALL 4 SIDES WITH WINDOW FLASHING TAPE IS REQUIRED AS A BARRIER BETWEEN THE UNIT AND CONCRETE OR TREATED LUMBER.  
 - MINIMUM OF 2 PER SIDE.  
 - SECURE JAMBS AND HEAD JAMBS WITH #8 X 3" SCREWS.  
 - SECURE THE SILL WITH #8 X 3" SCREWS.  
 - SHIM AT EACH SCREW LOCATION.

**NOTES:**  
 1. THIS PRINT IS FOR STRUCTURAL PERFORMANCE ONLY. FOR FLASHING & SEALING INSTRUCTIONS, REFER TO THE INSTALLATION INSTRUCTIONS.  
 2. SHIMS  
 - PLACE A SHIM WITHIN 4-6 INCHES OF EACH CORNER AND SPACE ALL OTHERS EVENLY A MAXIMUM OF 15" APART.  
 3. IF CHEMICALLY TREATED LUMBER IS USED FOR BUCK MATERIAL, FASTENERS INTO THE BUCK MUST BE A MINIMUM OF 0.90 OZ/FT<sup>2</sup> ZINC HOT DIPPED GALVANIZED OR STAINLESS STEEL TYPE 304 OR 316.

**CATEGORY:**  
DIRECT GLAZE  
  
**UNIT TYPE:**  
UDGNFCNR

ITEM NO	REF NO	DESCRIPTION
7	-----	1. 625 SHEET ROCK SCREW
6	-----	#8 X 3" SCREW
5	-----	MASONRY CLIP
4	-----	WOOD BUCK BY OTHERS
3	-----	#8 X 1 1/2" SCREW
2	-----	SHIM
1	-----	#8 X 5/8" SCREW

UNSPECIFIED TOLERANCES	
DECIMALS:	ANGLE DEG:
XX ± .03	± .5
XXX ± .012	
LINEAL:	FAB LINEAL:
+ .125	± NA
- .000	
MATERIAL:	NA



**MASONRY CLIP INSTALLATION METHOD:**  
 - UNIT MUST NOT BE IN DIRECT CONTACT WITH EITHER CONCRETE OR TREATED BUCK MATERIAL. IF SHIM SPACE IS LESS THAN 1/8" WRAPPING THE UNIT ON ALL 4 SIDES INCLUDING CLADDING WITH WINDOW FLASHING TAPE IS REQUIRED AS A BARRIER BETWEEN THE UNIT AND CONCRETE OR TREATED LUMBER.  
 - MINIMUM OF 2 FASTENERS PER SIDE.  
 - APPLY 3/8" PLYWOOD FILL BLOCK TO HEAD JAMB WITH TWO 5/16" BEADS OF STRUCTURAL ADHESIVE. ATTACH HEAD JAMB CLIPS WITH A #8 X 7/8" SCREW.  
 - LOCK LEG OF MASONRY CLIP INTO KERF ON CLADDING.  
 - ATTACH CLIPS TO JAMBS WITH TWO #7 X 5/8" SCREWS.  
 - WRAP CLIP TO THE INTERIOR AND PREDRILL TWO 5/32" HOLES FOR SCREWS.  
 - ATTACH THE CLIP TO THE BUCK WITH TWO 1 5/8" SHEET ROCK SCREWS OR TWO #8 X 1 1/2" SHEET METAL SCREWS. SEE NOTE #3 BELOW IF FASTENING INTO TREATED LUMBER.  
 - MINIMUM OF 2 CLIPS PER SIDE.  
 - SCREWS MUST BE FULLY EMBEDDED.

<b>MARVIN</b> Windows and Doors		<b>RESEARCH &amp; DEVELOPMENT</b> WARROAD, MN, USA, (218) 386-4021	
<b>PRODUCT CATEGORY:</b>	ULTIMATE	<b>UNIT TYPE:</b>	INSTALLATION
<b>DESCRIPTION:</b>	INSTALLATION UDGNFNCR	<b>DWG NO:</b>	00112935
<b>CHK:</b>	SIZE: B	<b>CLASS:</b>	MISC
<b>APP:</b>	SCALE: NA	<b>DATE:</b>	05/02/18
		<b>DWG BY:</b>	KNUTSON, BRUCE
		<b>SHEET:</b>	1 OF 1