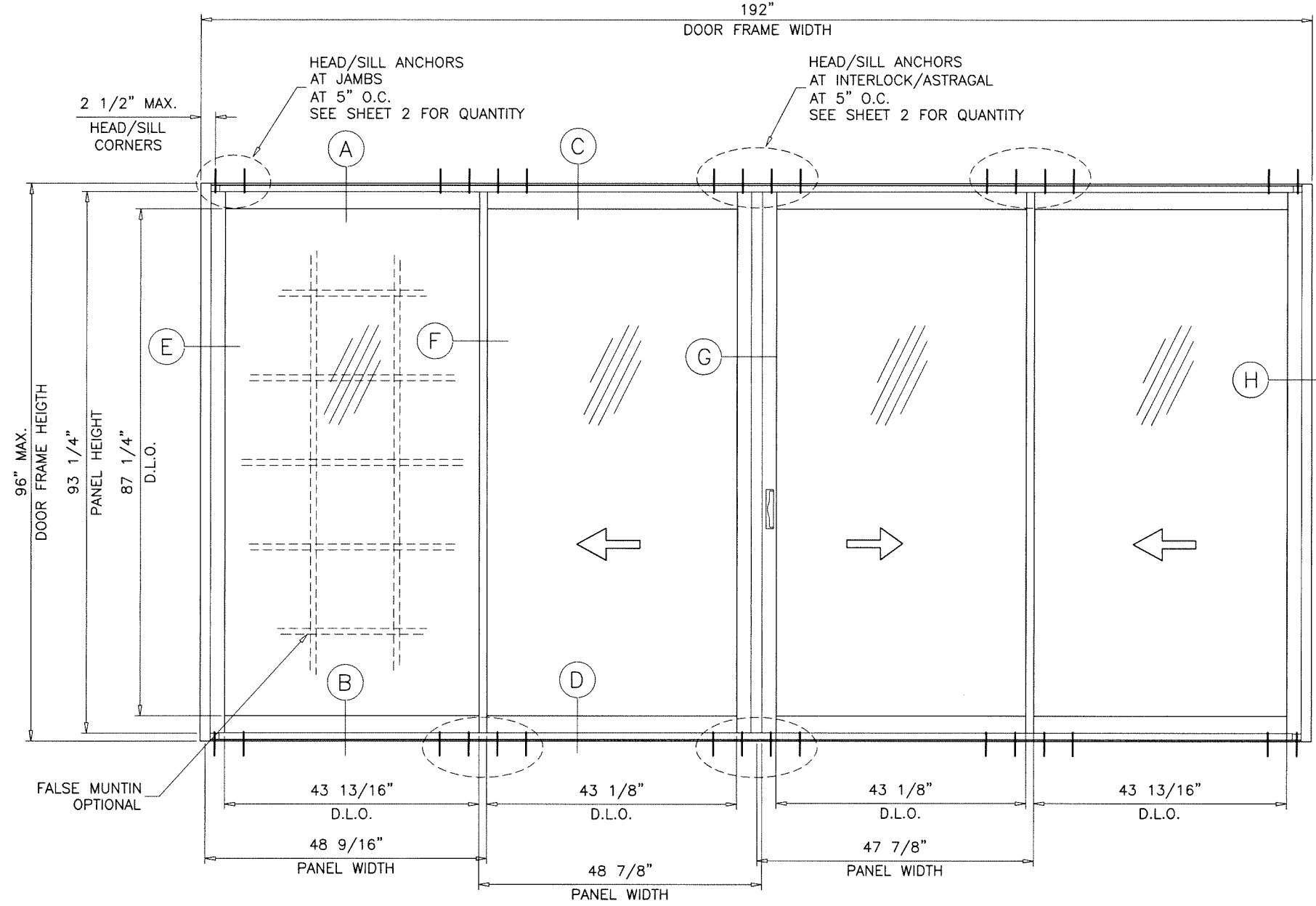


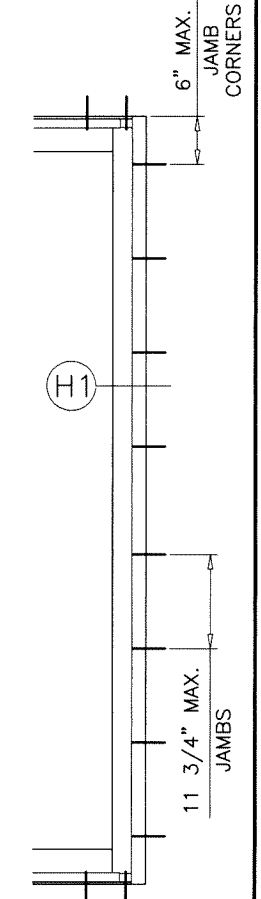
GLAZING DETAIL

7/16" OVERALL LAM. GLASS



TYPICAL ELEVATION

TESTED UNIT



ANCHORED JAMBS OPTION

**SERIES MG-1500 (L.M.I.)
ALUMINUM SLIDING GLASS DOOR**

THIS PRODUCT HAS BEEN DESIGNED AND TESTED TO COMPLY WITH THE REQUIREMENTS OF THE 2020 (7TH EDITION) FLORIDA BUILDING CODE INCLUDING HIGH VELOCITY HURRICANE ZONE (HVHZ).

1BY OR 2BY WOOD BUCKS & BUCK FASTENERS BY OTHERS, MUST BE DESIGNED AND INSTALLED ADEQUATELY TO TRANSFER APPLIED PRODUCT LOADS TO THE BUILDING STRUCTURE.

ANCHORS SHALL BE CORROSION RESISTANT, SPACED AS SHOWN ON DETAILS AND INSTALLED PER MANUF'S INSTRUCTIONS. SPECIFIED EMBEDMENT TO BASE MATERIAL SHALL BE BEYOND WALL DRESSING OR STUCCO.

A LOAD DURATION INCREASE IS USED IN DESIGN OF ANCHORS INTO WOOD ONLY.

ALL SHIMS TO BE HIGH IMPACT, NON-METALLIC AND NON-COMPRESSIBLE.

MATERIALS INCLUDING BUT NOT LIMITED TO STEEL/METAL SCREWS, THAT COME INTO CONTACT WITH OTHER DISSIMILAR MATERIALS SHALL MEET THE REQUIREMENTS OF THE 2020 FLORIDA BLDG. CODE & ADOPTED STANDARDS.

THIS PRODUCT APPROVAL IS GENERIC AND DOES NOT PROVIDE INFORMATION FOR A SITE SPECIFIC PROJECT, i.e. LIFE SAFETY OF THIS PRODUCT, ADEQUACY OF STRUCTURE RECEIVING THIS PRODUCT AND SEALING AROUND OPENING FOR WATER INFILTRATION RESISTANCE ETC. CONDITIONS NOT SHOWN IN THIS DRAWING ARE TO BE ANALYZED SEPARATELY, AND TO BE REVIEWED BY BUILDING OFFICIAL.

DESIGN LOADS SHOWN ARE BASED ON 'ALLOWABLE STRESS DESIGN (ASD)'.

MANUFACTURER'S LABEL SHALL BE LOCATED ON A READILY VISIBLE LOCATION IN ACCORDANCE WITH SECTION 1709.9.3 OF FLORIDA BUILDING CODE. LABELING TO COMPLY WITH SECTION 1709.9.2.

INSTRUCTIONS:

USE CHARTS AS FOLLOWS.

- STEP 1** DETERMINE DESIGN WIND LOAD REQUIREMENT BASED ON WIND VELOCITY, BLDG. HEIGHT, WIND ZONE USING APPLICABLE ASCE 7 STANDARD.
- STEP 2** SEE CHARTS ON SHEET 2 FOR DESIGN LOAD CAPACITY OF DOORS AND REQUIRED HEAD/SILL ANCHOR QUANTITY.
- STEP 3** FOR DOORS WITH FREE STANDING JAMBS SEE SHEET 6 TO VERIFY MIN. & MAX. GAP DIMENSIONS.

- A- CONTRACTOR TO BE RESPONSIBLE FOR THE SELECTION, PURCHASE AND INSTALLATION OF THIS PRODUCT BASED ON THIS PRODUCT EVALUATION PROVIDED HE/SHE DOES NOT DEVIATE FROM THE CONDITIONS DETAILED ON THIS DOCUMENT.
- B- THIS PRODUCT EVALUATION DOCUMENT WILL BE CONSIDERED INVALID IF ALTERED BY ANY MEANS.
- C- SITE SPECIFIC PROJECTS SHALL BE PREPARED BY A FLORIDA REGISTERED ENGINEER OR ARCHITECT WHICH WILL BECOME THE ENGINEER OF RECORD (E.O.R.) FOR THE PROJECT AND WHO WILL BE RESPONSIBLE FOR THE PROPER USE OF THE P.E.D. ENGINEER OF RECORD, ACTING AS A DELEGATED ENGINEER TO THE P.E.D. ENGINEER SHALL SUBMIT TO THIS LATTER THE SITE SPECIFIC DRAWINGS FOR REVIEW.
- D- THIS P.E.D. SHALL BEAR THE DATE AND ORIGINAL SEAL AND SIGNATURE OF THE PROFESSIONAL ENGINEER OF RECORD THAT PREPARED IT.

THESE DOORS ARE RATED FOR LARGE & SMALL MISSILE IMPACT. SHUTTERS ARE NOT REQUIRED.

FL #38057

date: 02-25-21
scale: 1/2"=1'-0"
dr. by: TARIQ
chk. by:

drawing no.
21-16F
sheet 1 of 10

af c

AL-FAROOQ CORPORATION
ENGINEERS & PRODUCT DEVELOPMENT
9360 SUNSET DRIVE, SUITE 220
MIAMI, FLORIDA 33173 (C.A.N. 3538)
TEL. (305) 264-8100 FAX. (305) 262-6978
COMP-ANL\21-16F-MG

MG-1500 ALUM SLIDING GLASS DOOR (L.M.I.)

MR-GLASS DOORS & WINDOWS MANUFACTURING, LLC
8051 N.W. 79th Place
Medley, FL. 33166
Tel. (305) 764-3963 Fax. (305) 470-8285

1/4" MAX. SHIMS

3/8" MAX. SHIMS

Table with 12 columns: AVERAGE PANEL WIDTH, DOOR FRAME HEIGHT, ANCHORS TYPE 'A' (2 and 4 at jamb/stile), ANCHORS 'B' (2 at jamb), ANCHORS TYPE 'C' (3 and 6 at jamb/stile). Rows for door heights 82, 84, 90, 96 inches.

Table with 16 columns: AVERAGE PANEL WIDTH, DOOR FRAME HEIGHT, ANCHORS TYPE 'A' (2 and 4 at jamb/stile), ANCHORS TYPE 'B' (2 and 3 at jamb), ANCHORS TYPE 'C' (2 and 3 at jamb). Rows for door heights 82, 84, 90, 96 inches.

1/2" MAX. SHIMS

3/4" MAX. SHIMS

Table with 10 columns: AVERAGE PANEL WIDTH, DOOR FRAME HEIGHT, ANCHORS TYPE 'A' & 'B' (2 and 4 at jamb/stile), ANCHORS TYPE 'C' (2 and 6 at jamb). Rows for door heights 82, 84, 90, 96 inches.

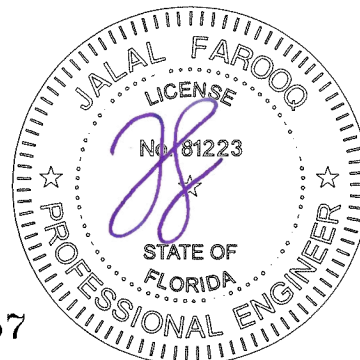
Table with 14 columns: AVERAGE PANEL WIDTH, DOOR FRAME HEIGHT, ANCHORS TYPE 'A' & 'B' (2, 3, 4 at jamb), ANCHORS TYPE 'C' (2, 3, 4 at jamb). Rows for door heights 82, 84, 90, 96 inches.

NOTE: GLASS CAPACITIES ON THIS SHEET ARE BASED ON ASTM E1300-09 (3 SEC. GUSTS) AND FLORIDA BUILDING COMMISSION DECLARATORY STATEMENT DCA05-DEC-219

AVERAGE PANEL WIDTH = DOOR FRAME WIDTH / NUMBER OF PANELS

DOOR HEIGHT AND WIDTH SIZE MUST COMPLY EGRESS REQUIREMENTS PER FBC AS REQUIRED.

NOTE: FOR DOOR CAPACITY SEE CHARTS ABOVE. FOR FREE STANDING JAMB CAPACITY SEE CHART ON SHEET 6. LOWER VALUES FROM DOOR CAPACITY CHART OR JAMB CAPACITY CHART WILL APPLY.



FL #38057

AL-FAROOQ CORPORATION ENGINEERS & PRODUCT DEVELOPMENT 9360 SUNSET DRIVE, SUITE 220 MIAMI, FLORIDA 33173 (C.A.N. 3538) TEL. (305) 264-8100 FAX (305) 262-6978

MG-1500 ALUM SLIDING GLASS DOOR (L.M.I.) MR-GLASS DOORS & WINDOWS MANUFACTURING, LLC 8051 N.W. 79th Place Medley, FL 33166 Tel. (305) 764-3963 Fax. (305) 470-8285

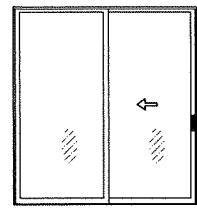
Revisions table with columns: no, date, by, description

date: 02-25-21 scale: 3/8" = 1" dr. by: TARIQ chk. by:

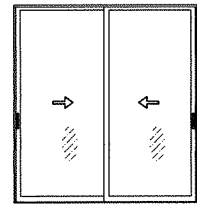
drawing no. 21-16F

sheet 2 of 10

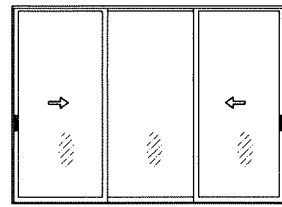
SEALED: 3/18/2021



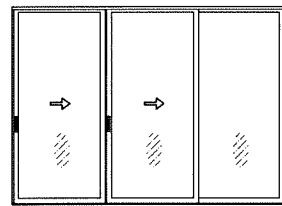
OX (SHOWN)
XO



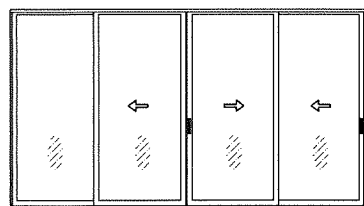
XX (SHOWN)



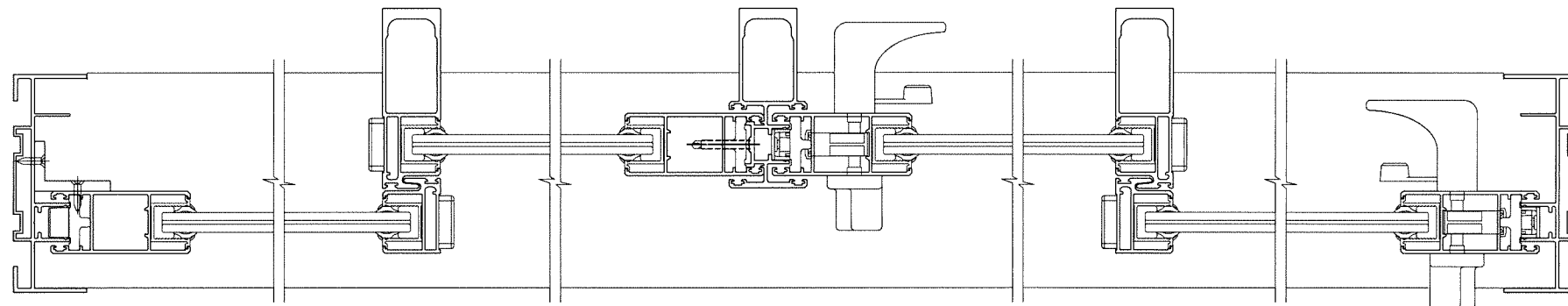
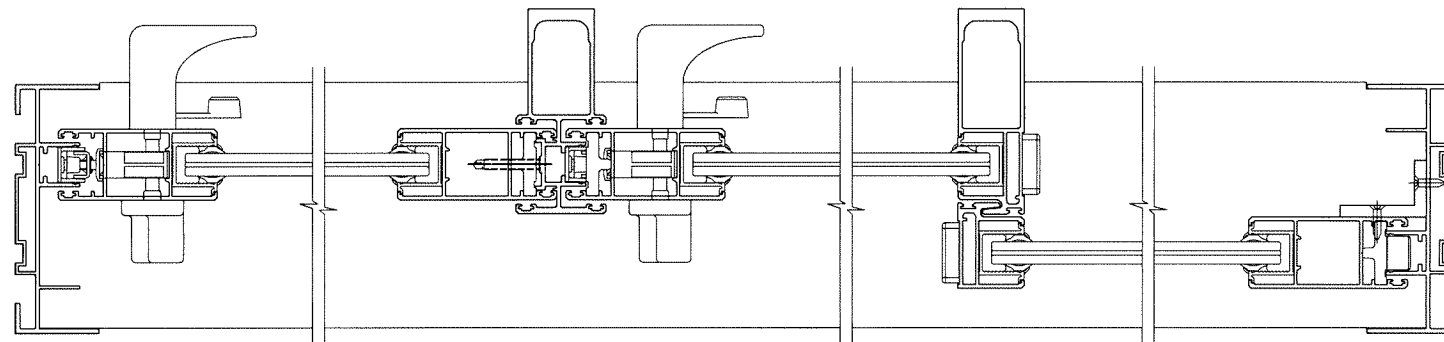
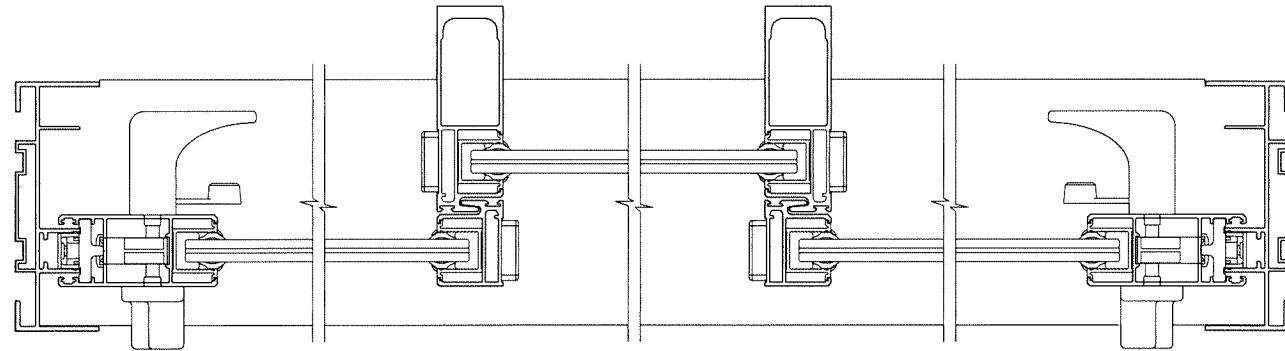
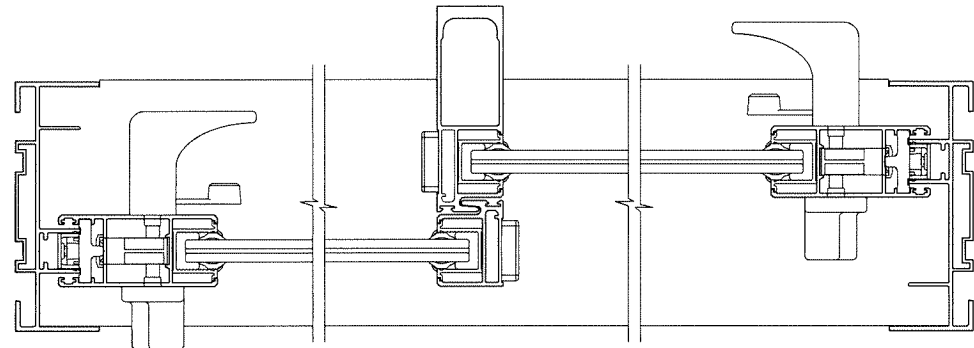
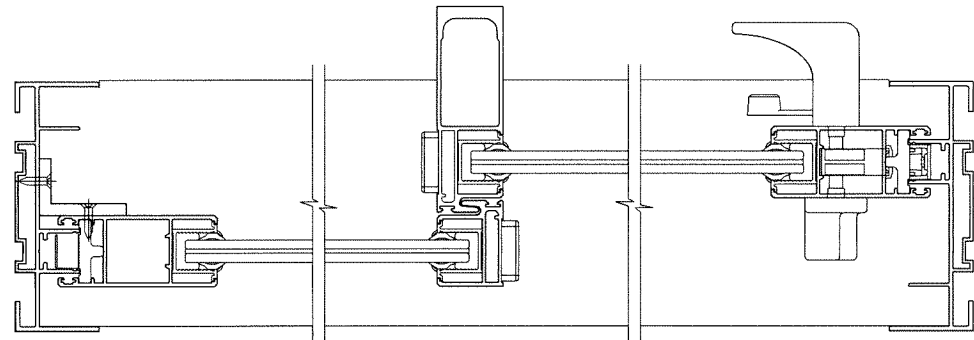
XOX (SHOWN)



XXO (SHOWN)
OXX



OXXX (SHOWN)
XXXX
OXXX



NOTE:

1. CONFIGURATIONS SHOWN FOR ILLUSTRATION PURPOSES ONLY.
2. FOR APPLICABLE DESIGN PRESSURES SEE SHEET 2.
3. FOR ANCHOR DETAILS SEE SHEETS 4 THRU 7.

a f c

AL-FAROOQ CORPORATION
ENGINEERS & PRODUCT DEVELOPMENT
9360 SUNSET DRIVE, SUITE 220
MIAMI, FLORIDA 33173 (C.A.N. 3638)
TEL. (305) 264-8100 FAX. (305) 262-6978

COMP-ANL\21-16F-MG

MG-1500 ALUM SLIDING GLASS DOOR (L.M.I.)

MR-GLASS DOORS & WINDOWS MANUFACTURING, LLC

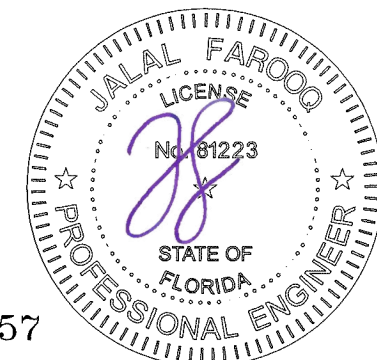
8051 N.W. 79th Place
Medley, FL. 33166
Tel. (305) 764-3963 Fax. (305) 470-8285

revisions:	
no	date

date: 02-25-21	scale: 3/8" = 1"
dr. by: TARIQ	chk. by:

drawing no.
21-16F

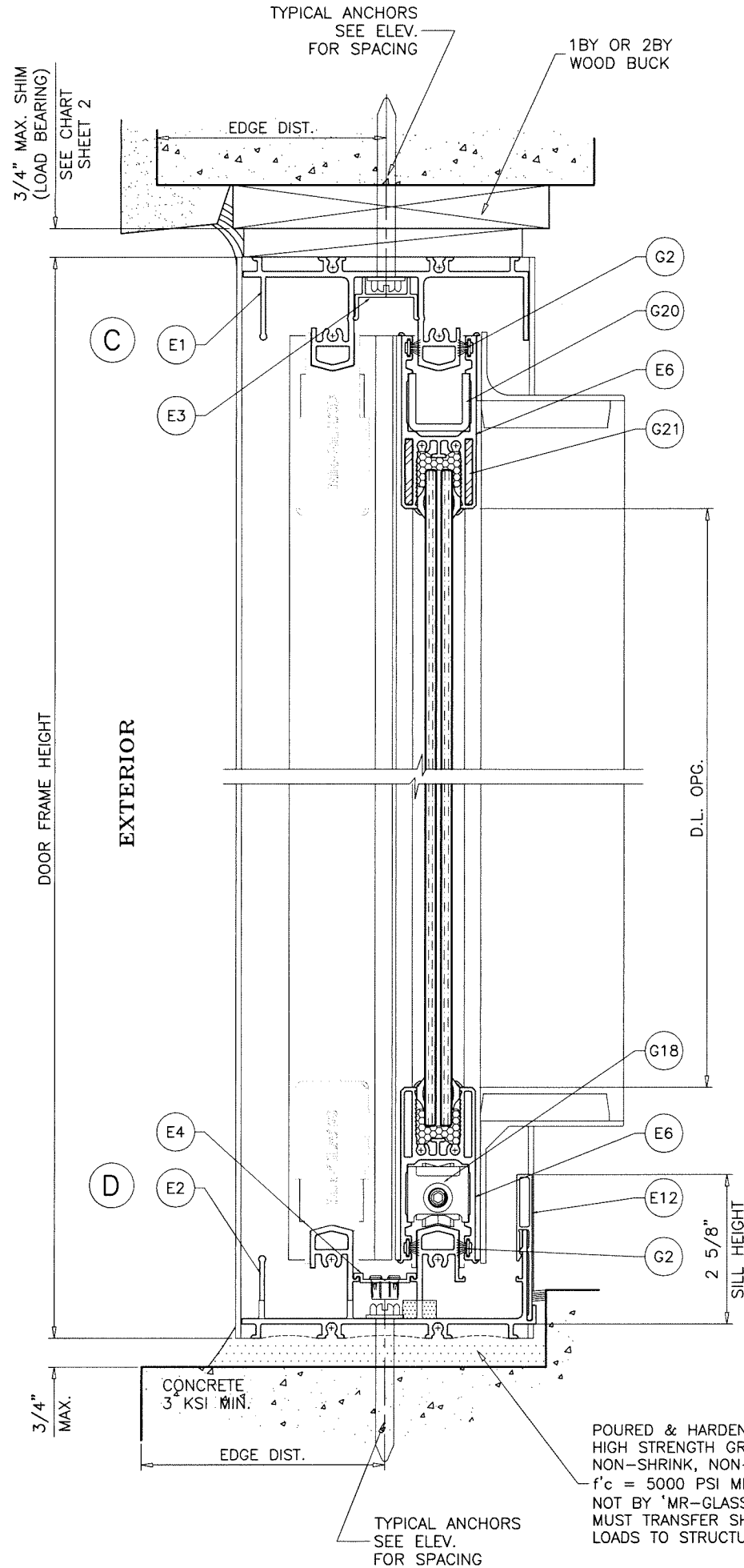
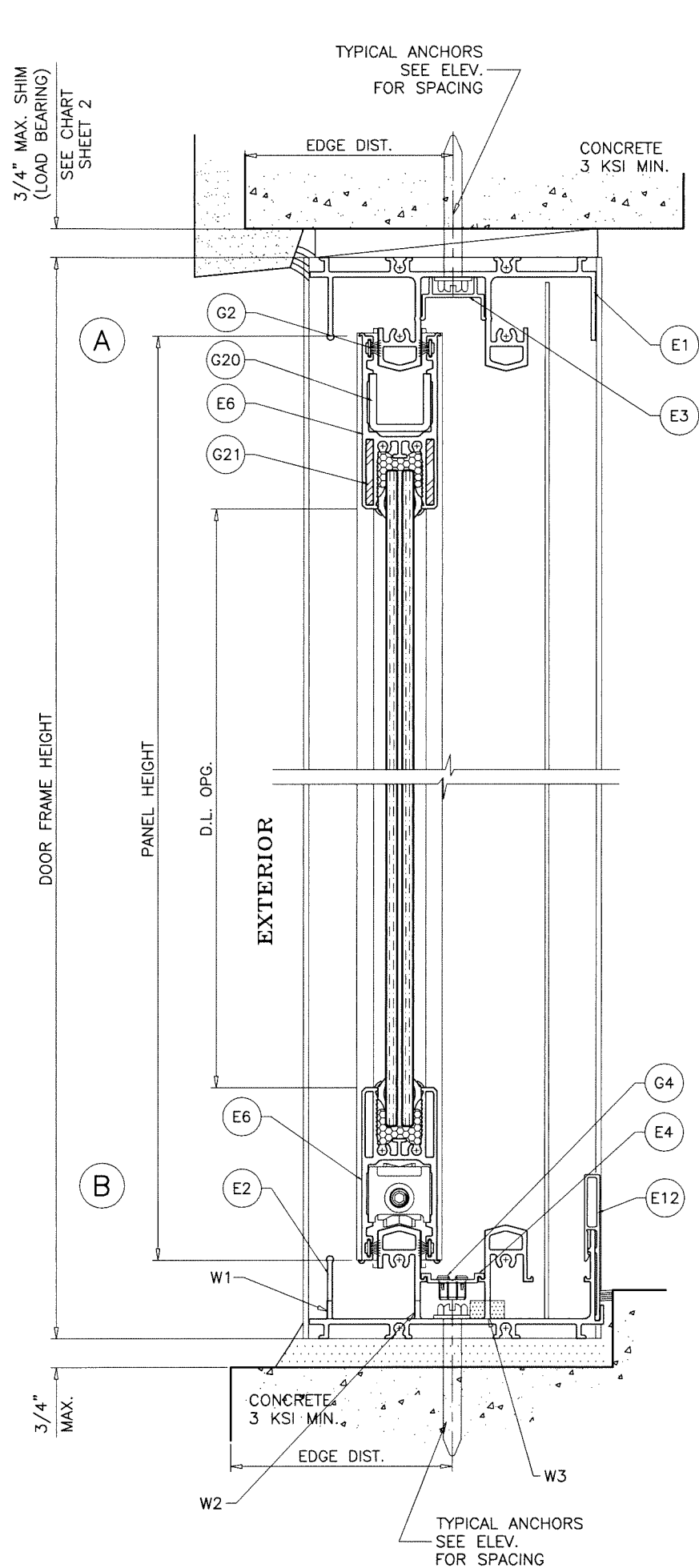
sheet 3 of 10



APPROVED CONFIGURATIONS

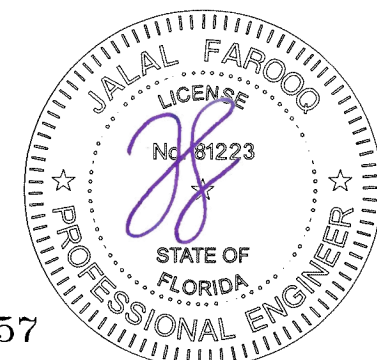
FL #38057

SEALED: 3/18/2021



WEEPHOLES:

- W1 = EXTERIOR LEG CUT 3-1/2" ON EACH END
3"W X 1/4"H WEEP SLOTS AT 24" O.C.
- W2 = 1-3/8"W X 1/4"H WEEP SLOTS AT 12" O.C.
- W3 = 1-3/8"W X 1/4"H WEEP SLOTS AT 12" O.C.
WITH RETICULATED FOAM.



FL #38057

SEALED: 3/18/2021

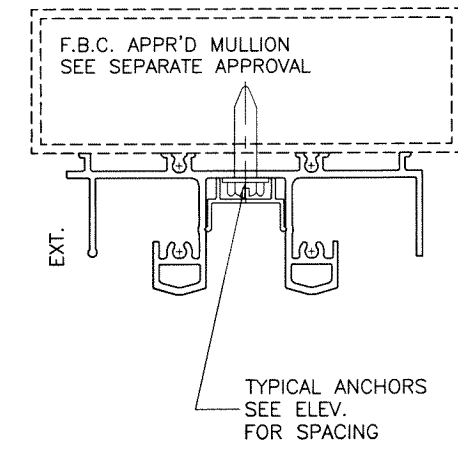
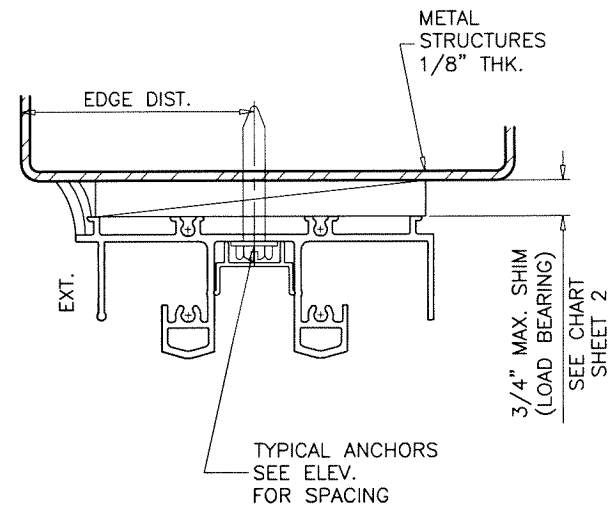
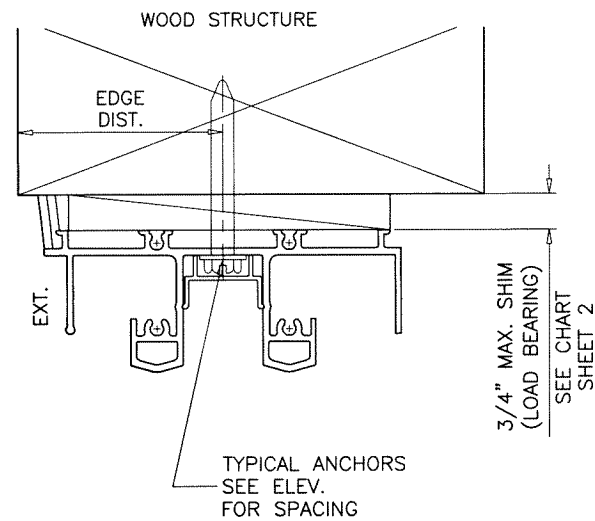
af c
AL-FAROOQ CORPORATION
 ENGINEERS & PRODUCT DEVELOPMENT
 9360 SUNSET DRIVE, SUITE 220
 MIAMI, FLORIDA 33173 (C.A.N. 3538)
 TEL. (305) 264-8100 FAX. (305) 262-6978
 COMP-ANL\21-16F-MG

MG-1500 ALUM SLIDING GLASS DOOR (L.M.I.)
MR-GLASS DOORS & WINDOWS MANUFACTURING, LLC
 8051 N.W. 79th Place
 Medley, FL. 33166
 Tel. (305) 764-3963 Fax. (305) 470-8285

revisions:	
no	by description

date: 02-25-21
 scale: 3/8" = 1"
 dr. by: TARIQ
 chk. by:

drawing no.
21-16F
 sheet 4 of 10



1BY OR 2BY WOOD BUCKS AND METAL STRUCTURE NOT BY 'MR-GLASS'
MUST SUSTAIN LOADS IMPOSED BY GLAZING SYSTEM
AND TRANSFER THEM TO THE BUILDING STRUCTURE.

TYPICAL ANCHORS: SEE ELEV. FOR SPACING

- TYPE 'A' - 5/16" DIA. ULTRACON BY 'DEWALT'** ($F_u=177$ KSI, $F_y=155$ KSI)
 INTO WOOD STRUCTURES
 1-7/8" MIN. PENETRATION INTO WOOD (HEAD/JAMBS)
 THRU 1BY OR 2BY BUCKS INTO CONC. OR BLOCKS
 1-1/4" MIN. EMBED INTO CONCRETE (HEAD)
 1-1/4" MIN. EMBED INTO CONC. OR BLOCKS (JAMBS)
 DIRECTLY INTO CONC. OR BLOCKS
 1-3/4" MIN. EMBED INTO CONCRETE (JAMBS)
 1-3/4" MIN. EMBED INTO GROUT-FILLED BLOCKS (JAMBS)

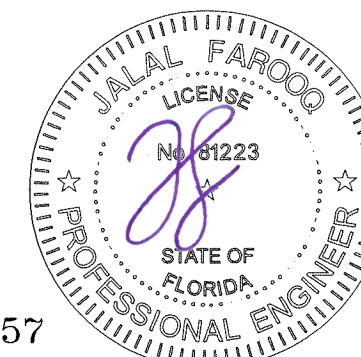
- TYPE 'B' - 5/16" DIA. ULTRACON BY 'DEWALT'** ($F_u=177$ KSI, $F_y=155$ KSI)
 DIRECTLY INTO CONCRETE
 1-3/4" MIN. EMBED (HEAD/SILL)

- TYPE 'C' - 5/16" DIA. TEKS OR SELF DRILLING SCREWS** (GRADE 5 CRS)
 INTO F.B.C. APPROVED MULLIONS
 OR
 INTO METAL STRUCTURES (HEAD/JAMBS)
 (3) THREADS MIN. TO EXTEND BEYOND METAL THICKNESS
 ALUMINUM: 1/8" THK. MIN. (6063-T5 MIN.)
 STEEL: 1/8" THK. MIN. ($F_y = 36$ KSI MIN.)
 (STEEL IN CONTACT WITH ALUMINUM TO BE PLATED OR PAINTED)

TYPICAL EDGE DISTANCE

- INTO CONCRETE AT HEAD/SILL = 2-3/16" MIN.
- INTO CONCRETE AND BLOCKS AT JAMBS = 2-1/2" MIN.
- INTO WOOD STRUCTURE = 1-1/4" MIN.
- INTO METAL STRUCTURE = 3/4" MIN.

- WOOD AT HEAD OR JAMBS SG = 0.55 MIN.
- CONCRETE AT HEAD, SILL OR JAMBS $f'_c = 3000$ PSI MIN.
- C-90 HOLLOW/FILLED BLOCK AT JAMBS $f'_m = 2000$ PSI MIN.



FL #38057

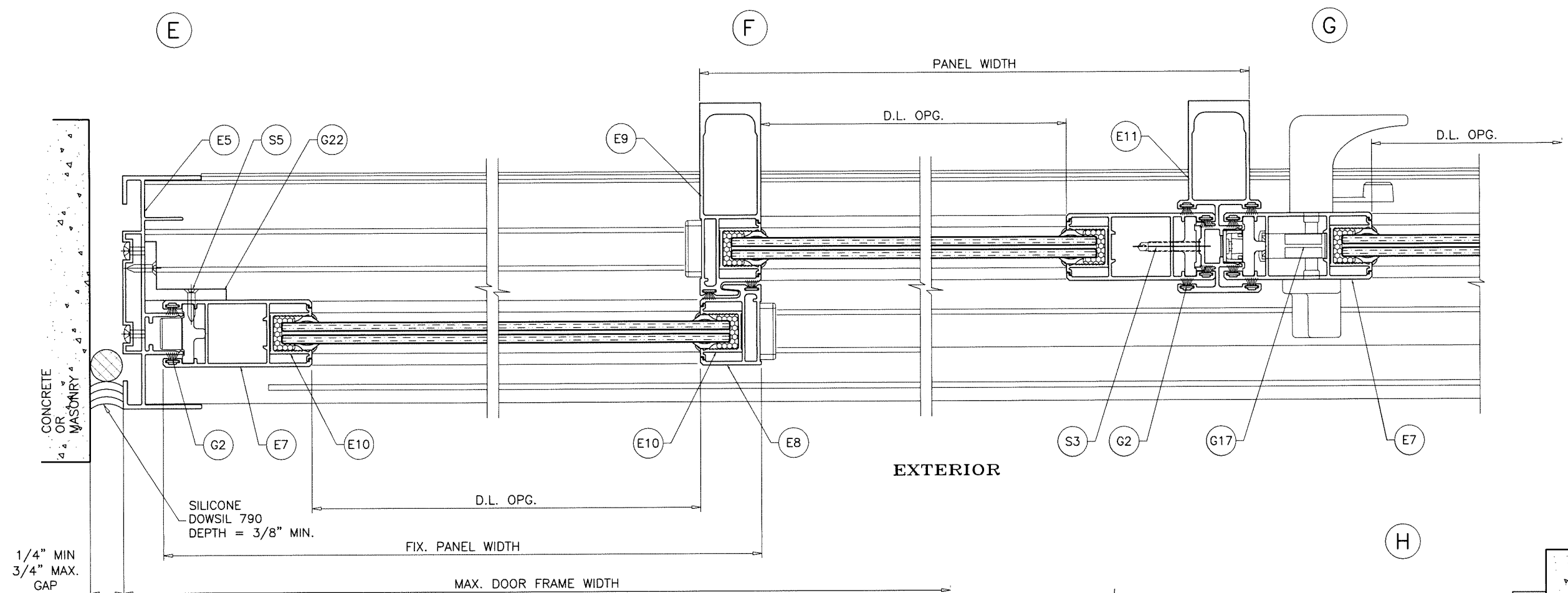
afc
AL-FAROOQ CORPORATION
 ENGINEERS & PRODUCT DEVELOPMENT
 9360 SUNSET DRIVE, SUITE 220 (C.A.N. 3538)
 MIAMI, FLORIDA 33173
 TEL. (305) 264-8100 FAX. (305) 262-6978
 COMP-ANL 21-16F-MG

MG-1500 ALUM SLIDING GLASS DOOR (L.M.I.)
 MR-GLASS DOORS & WINDOWS MANUFACTURING, LLC
 8051 N.W. 79th Place
 Medley, FL. 33166
 Tel. (305) 764-3963 Fax. (305) 470-8285

revisions:	
no	description

date: 02-25-21
 scale: 3/8" = 1"
 dr. by: TARIQ
 chk. by:

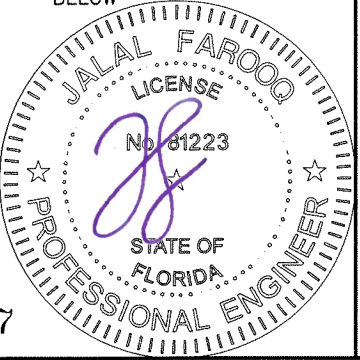
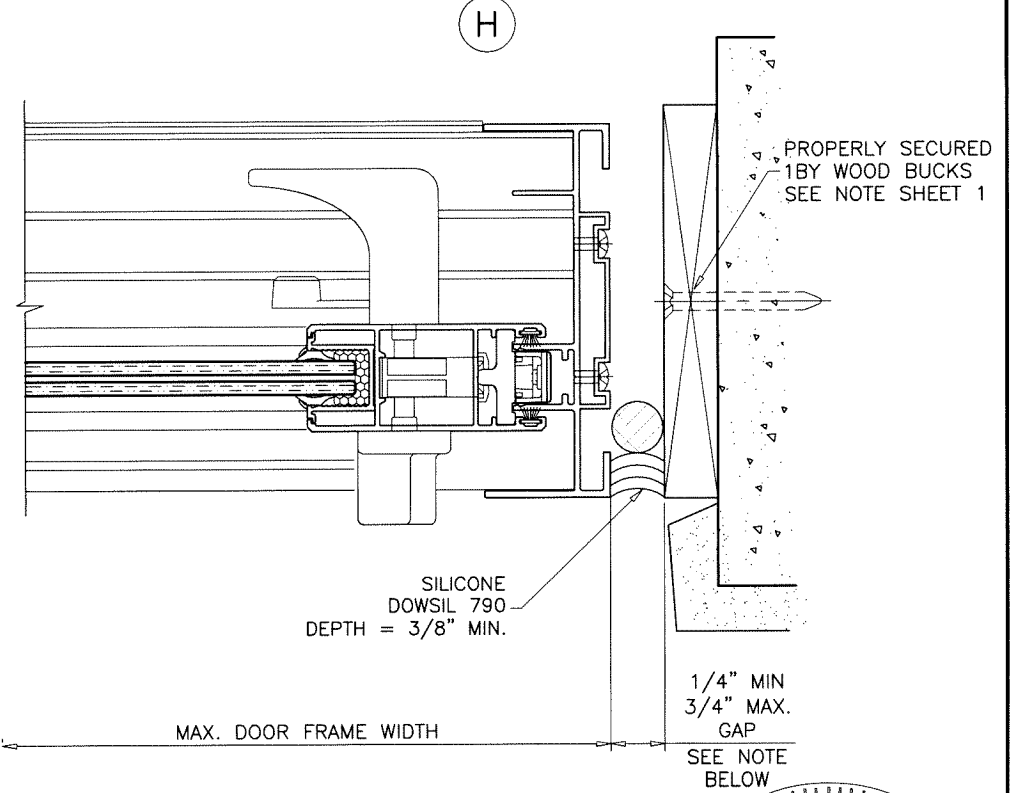
drawing no.
21-16F
 sheet 5 of 10



1/4" MIN
3/4" MAX.
GAP
SEE NOTE
BELOW

MAX. FRAME HEIGHT	GAP	
	MIN.	MAX.
84"	1/4"	3/4"
96"	5/16"	3/4"

NOTE:
MAX. MOVEMENT CONSIDERED=100% STRETCH.
PLEASE REFER TO SEALANT MANUFACTURER'S DATA AND APPLICATION
MANUAL FOR COMPATABILITY OF SEALANT TO SUBSTRATE & WINDOWALL
MATERIAL/FINISH AND COMPLIANCE FOR WARRANTY.
REFER TO ACI-117-10 FOR CONSTRUCTION TOLERANCES.
ALTERNATE SEALANTS AT JAMB GAPS CAN BE DESIGNED BY
ENGINEER OF RECORD BASED ON MANUFACTURER GUIDE LINES.
GAPS LESS THAN 1/4" MAY BE DESIGNED BY ENGINEER OF RECORD BY
THE USE OF BOND BREAKER TAPE OR 15% OF GAP ALLOWED MOVEMENT.



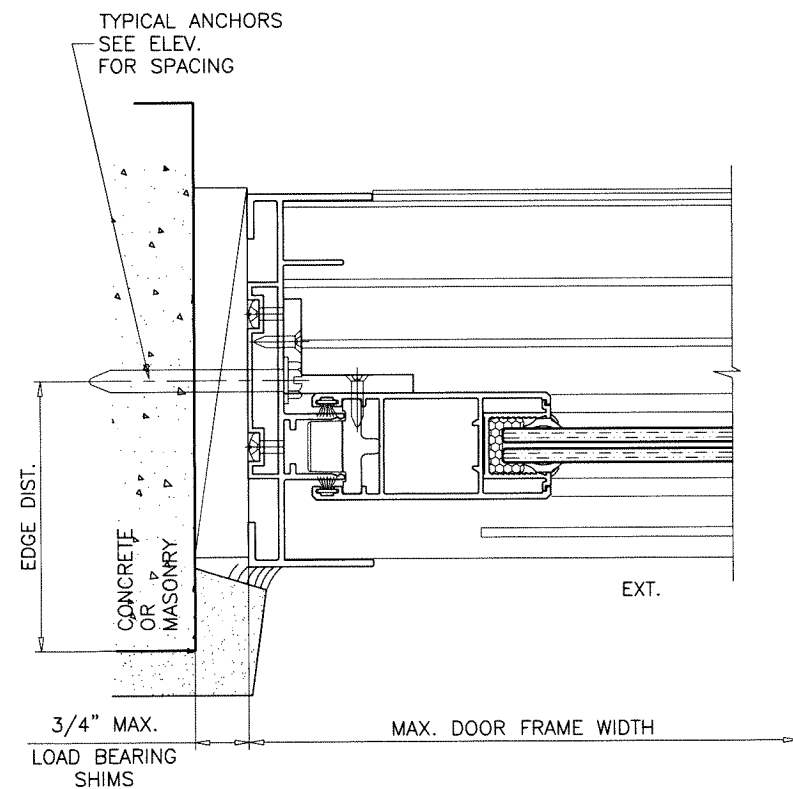
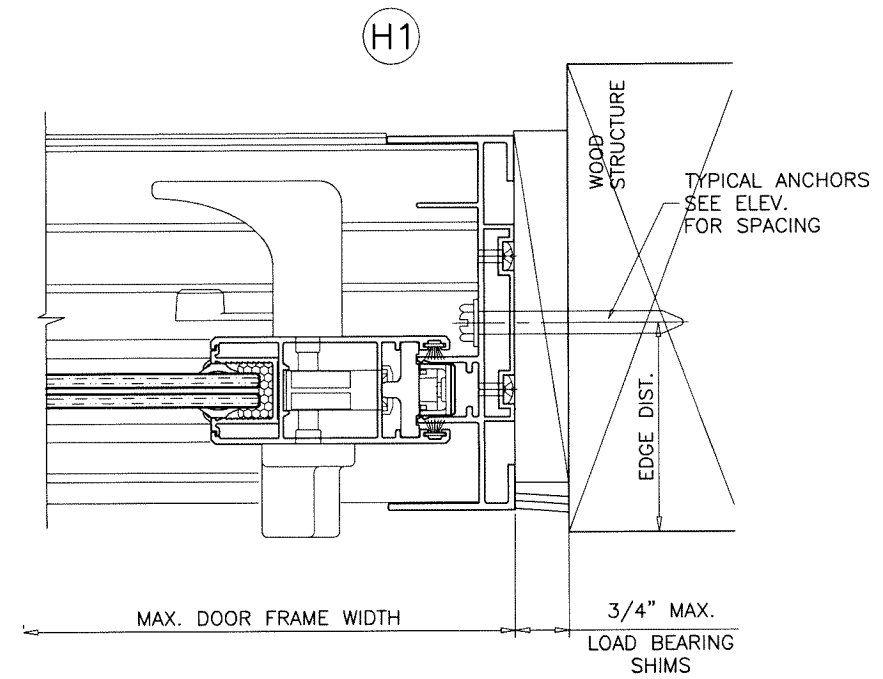
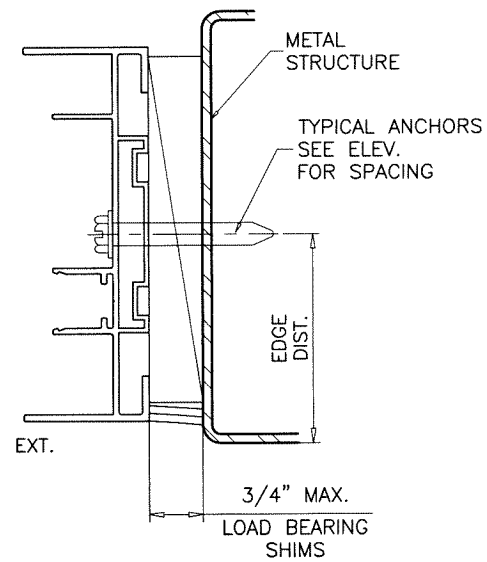
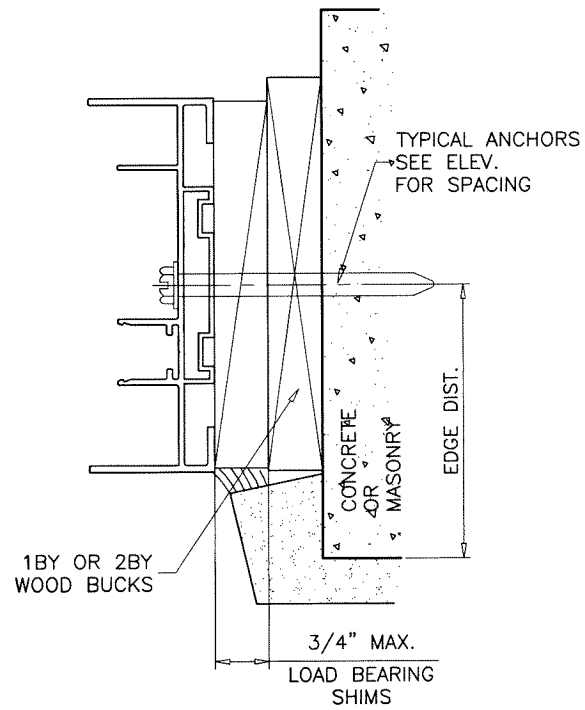
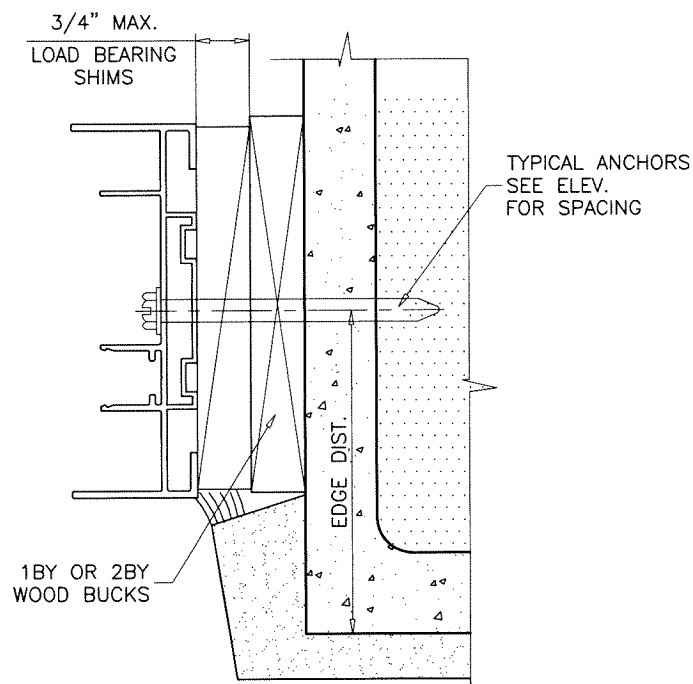
FL #38057

SEALED: 3/18/2021

af c
AL-FAROOQ CORPORATION
ENGINEERS & PRODUCT DEVELOPMENT
9360 SUNSET DRIVE, SUITE 220 (C.A.N. 3538)
MIAMI, FLORIDA 33173
TEL. (305) 264-8100 FAX. (305) 262-6978
COMP-ANL\21-16F-MG

MG-1500 ALUM SLIDING GLASS DOOR (L.M.I.)
MR-GLASS DOORS & WINDOWS MANUFACTURING, LLC
8051 N.W. 79th Place
Medley, FL. 33166
Tel. (305) 764-3963 Fax. (305) 470-8285

revisions:	no.	date	by	description
date:	02-25-21	scale:	3/8" = 1"	
dr. by:	TARIQ	chk. by:		
drawing no.	21-16F			
sheet	6 of 10			



FL #38057

SEALED: 3/18/2021

afc

AL-FAROOQ CORPORATION
ENGINEERS & PRODUCT DEVELOPMENT
9360 SUNSET DRIVE, SUITE 220
MIAMI, FLORIDA 33173 (C.A.N. 3538)
TEL. (305) 264-8100 FAX. (305) 262-6978

COMP-ANL\21-16F-MG

MG-1500 ALUM SLIDING GLASS DOOR (L.M.I.)

MR-GLASS DOORS & WINDOWS MANUFACTURING, LLC

8051 N.W. 79th Place

Medley, FL. 33166

Tel. (305) 764-3963

Fax. (305) 470-8285

revisions:

no. date by description

date: 02-25-21

scale: 3/8" = 1"

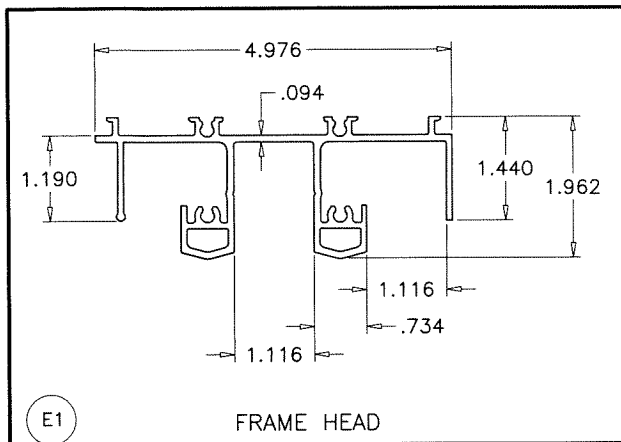
dr. by: TARIQ

chk. by:

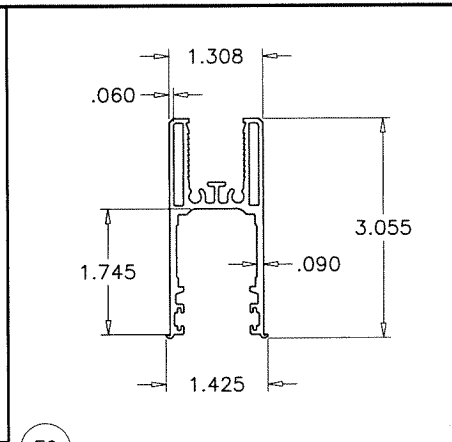
drawing no.

21-16F

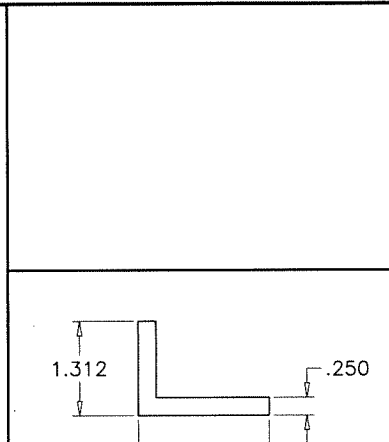
sheet 7 of 10



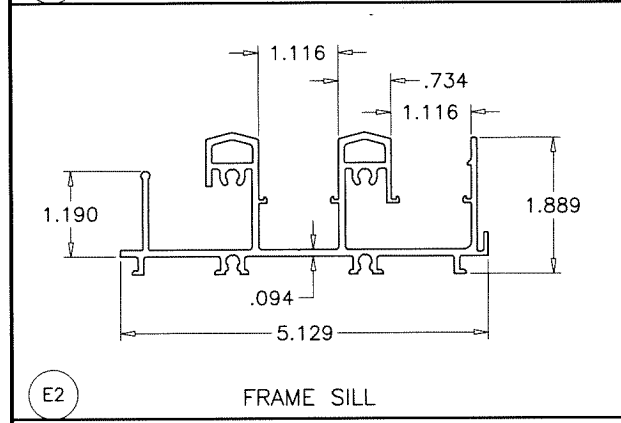
E1 FRAME HEAD



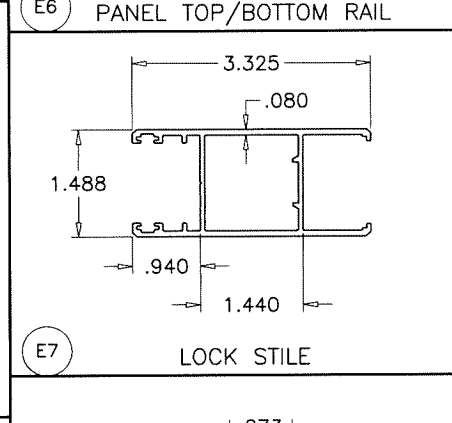
E6 PANEL TOP/BOTTOM RAIL



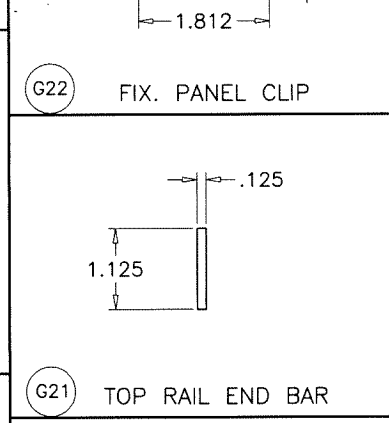
G22 FIX. PANEL CLIP



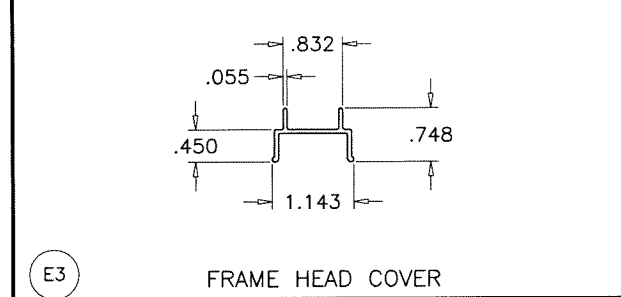
E2 FRAME SILL



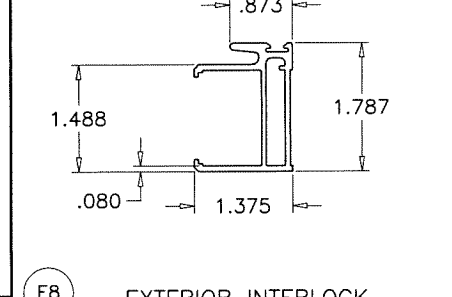
E7 LOCK STILE



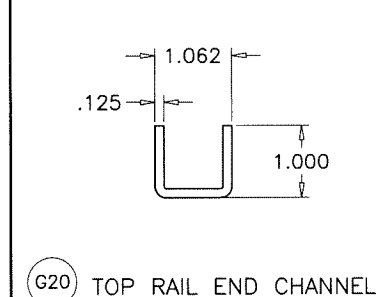
G21 TOP RAIL END BAR



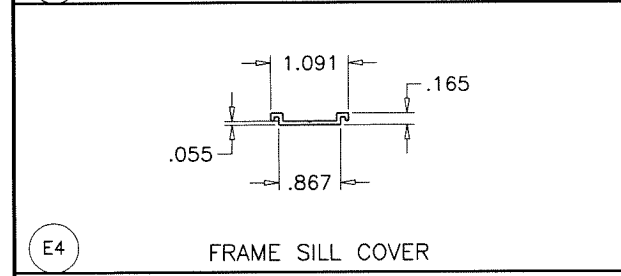
E3 FRAME HEAD COVER



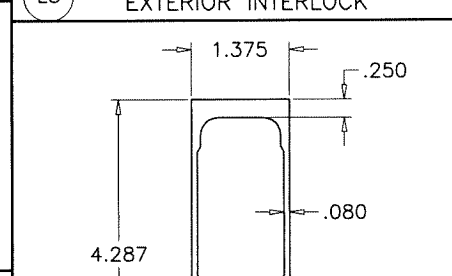
E8 EXTERIOR INTERLOCK



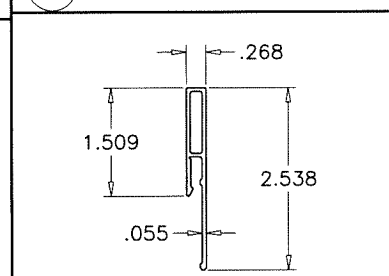
G20 TOP RAIL END CHANNEL



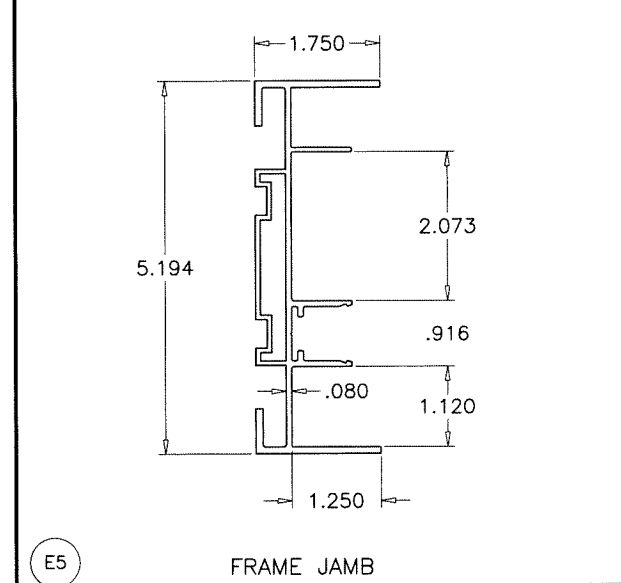
E4 FRAME SILL COVER



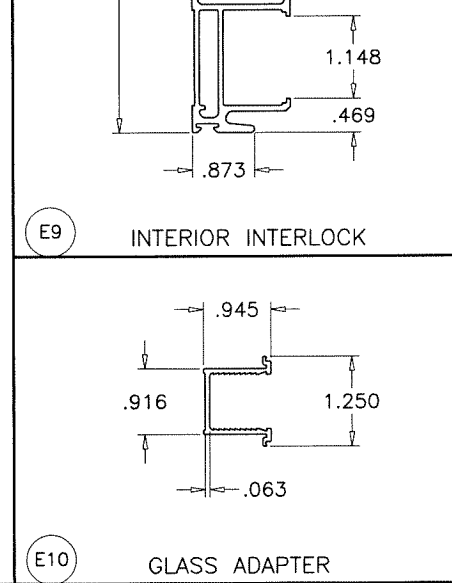
E9 INTERIOR INTERLOCK



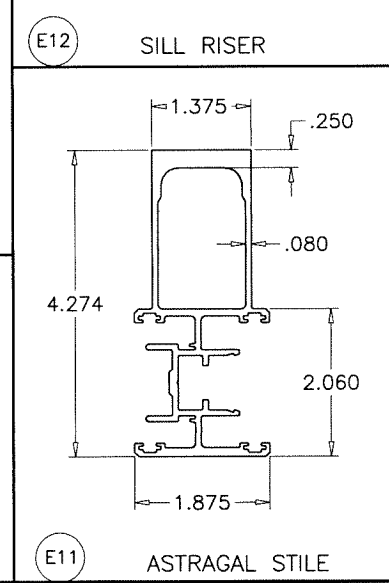
E12 SILL RISER



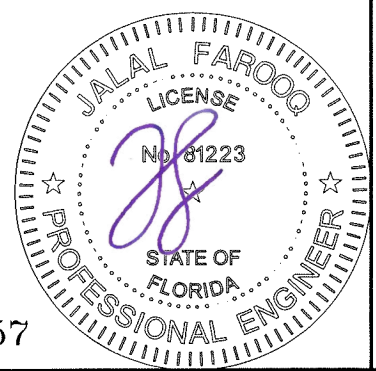
E5 FRAME JAMB



E10 GLASS ADAPTER



E11 ASTRAGAL STILE



FL #38057

af c
AL-FAROOQ CORPORATION
 ENGINEERS & PRODUCT DEVELOPMENT
 9360 SUNSET DRIVE, SUITE 220 (C.A.N. 3538)
 MIAMI, FLORIDA 33173 TEL. (305) 262-6978
 TEL. (305) 264-8100 FAX. (305) 264-8100 COMP-ANL\21-16F-MG

MG-1500 ALUM SLIDING GLASS DOOR (L.M.I.)
 MR-GLASS DOORS & WINDOWS MANUFACTURING, LLC
 8051 N.W. 79th Place
 Medley, FL. 33166
 Tel. (305) 764-3963 Fax. (305) 470-8285

revisions:	no.	date	by	description

date: 02-25-21
 scale: 3/8" = 1"
 dr. by: TARIQ
 chk. by:

drawing no.
21-16F

sheet 8 of 10

ITEM #	PART #	QUANTITY	DESCRIPTION	MATERIAL	MANF./SUPPLIER/REMARKS
E1	E1503	1	FRAME HEAD	6063-T6	-
E2	E1501	1	FRAME SILL	6063-T6	-
E3	E1522	AS REQD.	FRAME HEAD COVER	6063-T5	OPTIONAL
E4	E1520	AS REQD.	FRAME SILL COVER	6063-T5	OPTIONAL
E5	E1502	2	FRAME JAMB	6063-T6	-
E6	E1510	2/ PANEL	PANEL TOP/BOTTOM RAIL	6063-T6	-
E7	E1511	AS REQD.	LOCK STILE	6063-T6	-
E8	E1512	AS REQD.	EXTERIOR INTERLOCK	6063-T6	-
E9	E1513	AS REQD.	INTERIOR INTERLOCK	6063-T6	-
E10	E1517	AS REQD.	GLASS ADAPTER	6063-T6	-
E11	E1514	AS REQD.	ASTRAGAL STILE	6063-T6	-
E12	E1521	AS REQD.	SILL RISER	6063-T5	-
G1	G15-01L	AS REQD.	WEDGE GASKET	EPDM	DUROMETER 65±5 SHORE A
G2	G15-02	AS REQD.	PILE W'STRIPPING	POLYETHYLENE/YARN	-
G3	G15-12	AS REQD.	BALL VALVE	-	-
G4	G15-12	AS REQD.	HOLE PLUG	PVC	-
G5	G15-15	AS REQD.	GASKET	NEOPRENE	-
G6	M10-05	AS REQD.	EXTERIOR BUMPER	-	-
G7	M15-01	AS REQD.	LOCK STILE COVER	POLYAMIDE	-
G8	M15-02	AS REQD.	-	-	-
G9	M15-03	AS REQD.	LOCK STILE GUIDE	POLYAMIDE	-
G10	-	AS REQD.	PANEL BUMPER	NEOPRENE	-
G11	M15-04	AS REQD.	INTERLOCK COVER	POLYAMIDE	-
G12	M15-05	AS REQD.	INTERLOCK COVER	POLYAMIDE	-
G13	M15-06	AS REQD.	INTERLOCK COVER/GUIDE	POLYAMIDE	-
G14	M15-07	AS REQD.	INTERLOCK CAP	POLYAMIDE	-
G15	M15-09	AS REQD.	ASTRAGAL CAP	POLYAMIDE	-
G16	M15-11	AS REQD.	ASTRAGAL COVER	POLYAMIDE	-
G17	L15-01	-	2 POINT MORTISE LOCK & HANDLE	ZAMAK	INTERLOCK
G18	M15-20	2/ MOV. PANEL	ROLLER ASSEMBLY AT 9" FROM ENDS	ST. STEEL/ACETAL	FASTENED WITH (2) 12-24 X 3/4" PH MS
G19	-	AS REQD.	SETTING BLOCKS	EPDM	DUROMETER 80±5 SHORE A
G20	-	AS REQD.	TOP RAIL END CHANNEL, 4" LONG AT PANEL ENDS	6063-T6	-
G21	-	AS REQD.	TOP RAIL END BAR, 4" LONG AT PANEL ENDS	6063-T6	-
G22	-	2/ FIX. PANEL	FIXED PANEL CLIP, 1-7/8" LONG, AT 4" FROM TOP & BOTTOM	6063-T6	-
S1	#12 X 1 1/2"	4/ CORNER	FRAME ASSEMBLY FASTENERS	ST. STEEL	PH SDS
S2	#10 X 1 1/2"	4/ CORNER	PANEL ASSEMBLY FASTENERS	ST. STEEL	PH SDS
S3	#12 X 1 1/2"	AS REQD.	ASTRAGAL FASTENERS, AT 3-1/2" FROM ENDS & 8" O.C.	ST. STEEL	FH SDS
S4	#10 X 1"	AS REQD.	BALL VALVE FASTENERS	ST. STEEL	PH SMS
S5	#10 X 1"	2/ CLIP	FIX. CLIP FASTENERS	ST. STEEL	FH SMS

SEALANT:

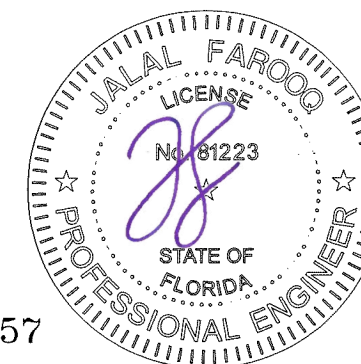
ALL JOINTS AND FRAME CONNECTIONS SEALED WITH WHITE/ALUMINUM COLORED SILICONE.

LOCKS:

SURFACE MOUNT METALLIC THREE PLY DUAL HOOK LOCK AT 38-1/2" FROM BOTTOM FASTENED TO LOCK STILE WITH (2) 10-24 X 1/2" FH TC MS

SURFACE MOUNT METALLIC HANDLE AT 38-1/2" FROM BOTTOM FASTENED TO LOCK STILE WITH (2) 8-32 X 2-5/8" FH MS

SURFACE MOUNT METALLIC KEEPER FACING LOCK AT 38 1/2" FROM BOTTOM FASTENED WITH (1) #14 X 2-7/8" FH SDS AND (1) 12-24 X 1/2" PH MS

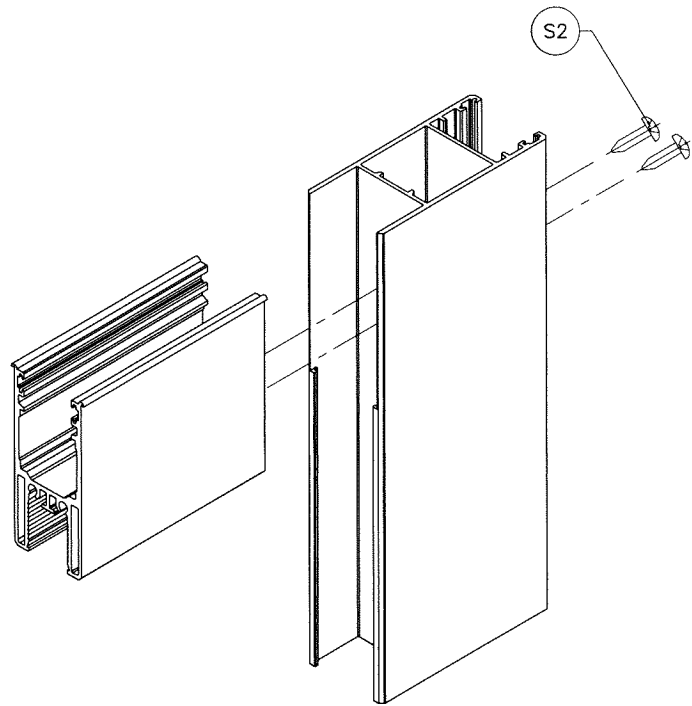


FL #38057

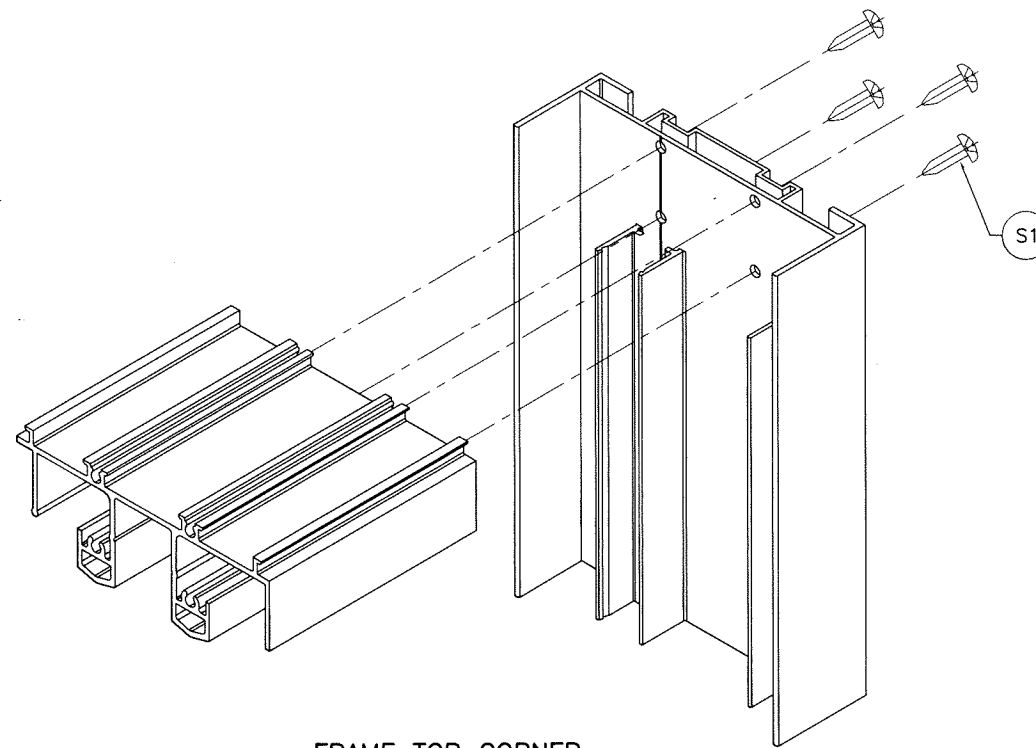
af c
AL-FAROOQ CORPORATION
 ENGINEERS & PRODUCT DEVELOPMENT
 9360 SUNSET DRIVE, SUITE 220 (C.A.N. 3538)
 MIAMI, FLORIDA 33173
 TEL. (305) 264-8100 FAX. (305) 262-6978
 COMP-ANL\21-16F-MG

MG-1500 ALUM SLIDING GLASS DOOR (L.M.I.)
MR-GLASS DOORS & WINDOWS MANUFACTURING, LLC
 8051 N.W. 79th Place
 Medley, FL 33166
 Tel. (305) 764-3963 Fax. (305) 470-8285

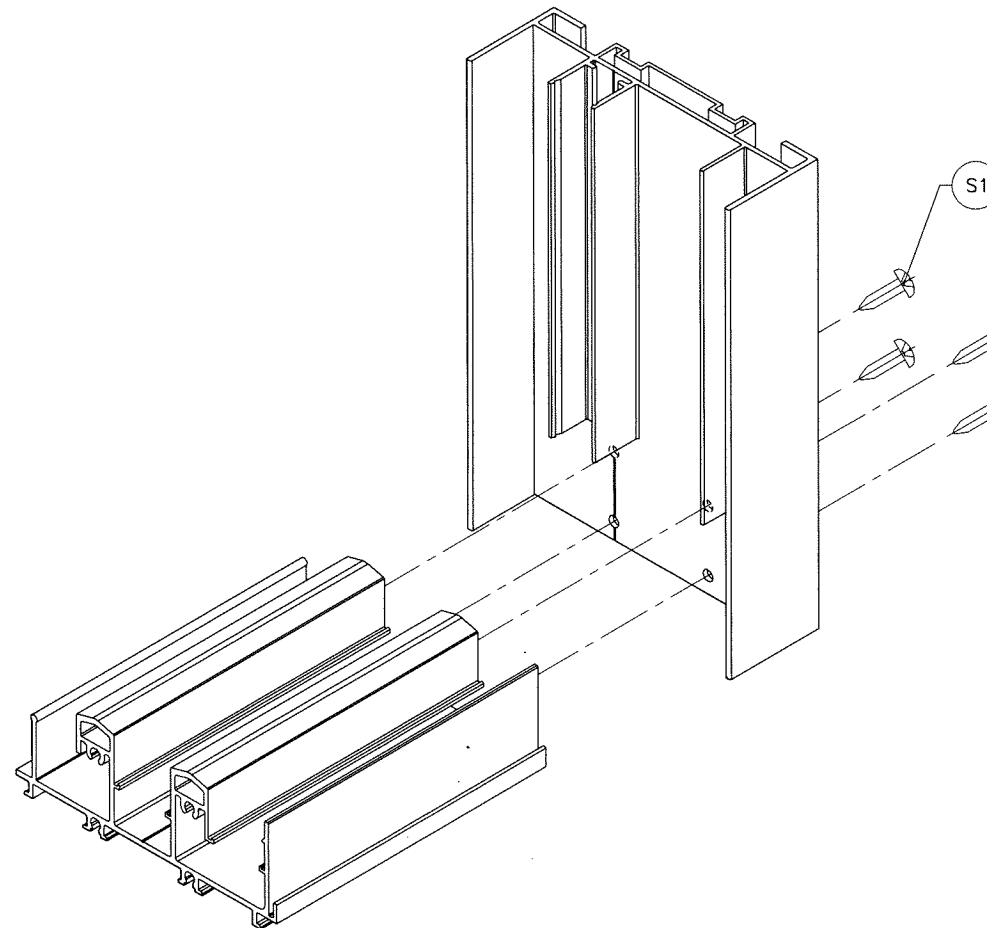
revisions:	no	date	by	description
date:	02-25-21			
scale:	3/8" = 1"			
dr. by:	TARIQ			
chk. by:				
drawing no.	21-16F			
sheet	9 of 10			



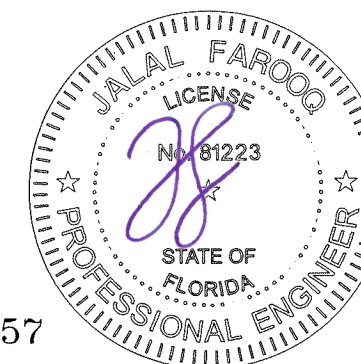
PANEL TOP/BOTTOM CORNER




FRAME TOP CORNER



FRAME BOTTOM CORNER



FL #38057



AL-FAROOQ CORPORATION
ENGINEERS & PRODUCT DEVELOPMENT
9360 SUNSET DRIVE, SUITE 220
MIAMI, FLORIDA 33173
TEL. (305) 264-8100 FAX. (305) 262-6978

COMP-ANL 21-16F-MG

MG-1500 ALUM SLIDING GLASS DOOR (L.M.I.)

MR-GLASS DOORS & WINDOWS MANUFACTURING, LLC
8051 N.W. 79th Place
Medley, FL 33166
Tel. (305) 764-3963 Fax. (305) 470-8285

no	date	description

date: 02-25-21

scale: 3/8" = 1"

dr. by: TARIQ

chk. by:

drawing no.

21-16F

sheet 10 of 10