

SHEET INDEX

101	COVER PAGE
102	ELEVATIONS
103	GLAZING OPTIONS
104	VERTICAL MULLION CHART
105	HORIZONTAL MULLION CHART
106	ANCHOR CHART
107	SECTIONAL DETAILS
108	SECTIONAL DETAILS
109	SECTIONAL DETAILS
110	SECTIONAL DETAILS
111	BILL OF MATERIALS
112	FRAME ASSEMBLY DETAIL

NOTE:

THIS PRODUCT APPROVAL DRAWING IS A TABULATED PERFORMANCE ANALYSIS OF THE INDIVIDUAL COMPONENTS AND DOES NOT CONTAIN INFORMATION ON EACH PROJECT SITE SPECIFIC CONDITION. STRUCTURAL, WATERPROOFING, SEALING, GUARD, AESTHETICS AND/OR OTHER MISCELLANEOUS REQUIREMENTS MUST BE COORDINATED AND APPROVED BY THE AUTHORITY HAVING JURISDICTION.

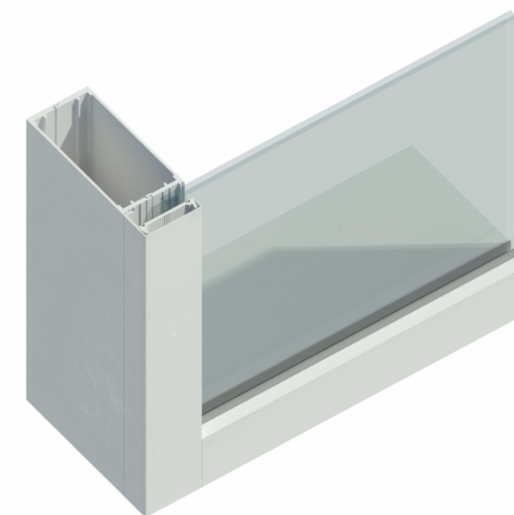
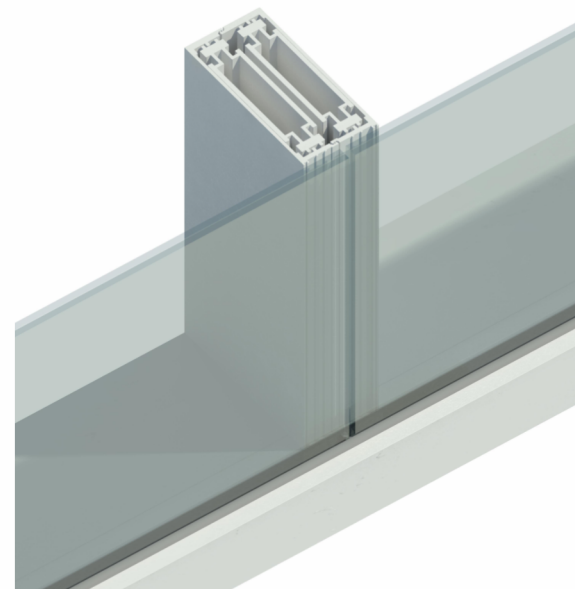
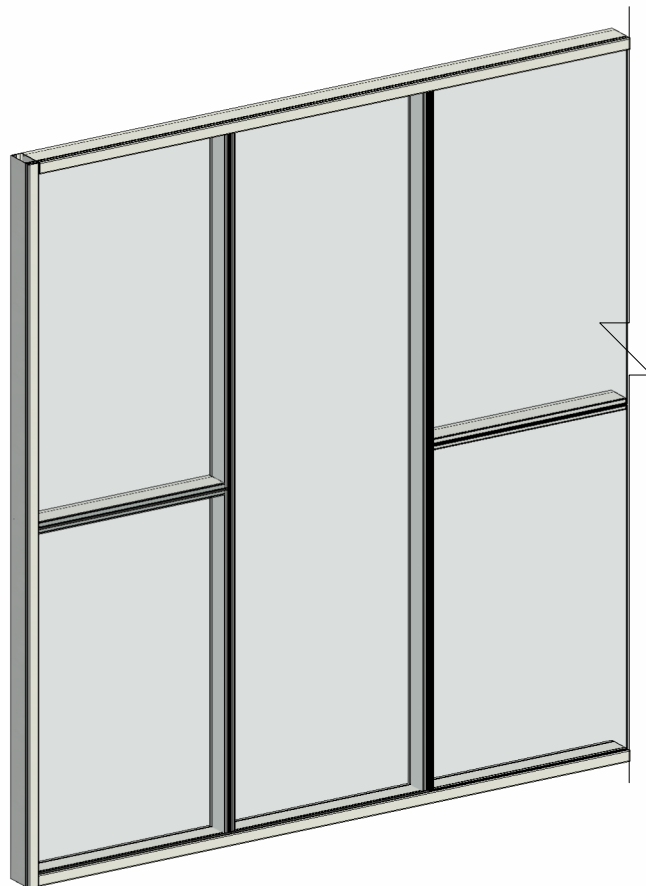
FOR SITE-SPECIFIC CONDITIONS WHERE THE DESIGN PRESSURE / PRODUCT SIZE EXCEEDS THE VALUES SHOWN IN THIS DOCUMENT, CONTACT OGT WINDOW SYSTEMS FOR SPECIAL APPROVALS THROUGH THEIR OFFICIAL MAIL info@ogtwindows.com / CONTACT DETAILS PROVIDED ON THE RIGHT SIDE OF THIS SHEET.

**OGT-700 WINDOW WALL SYSTEM
(LARGE AND SMALL MISSILE IMPACT RATED)**

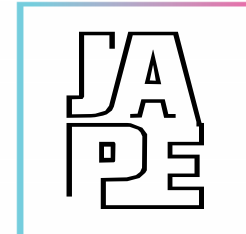
FL#39158



Digitally signed
by Javad
Ahmad
Date:
2023.12.22
11:08:15 -05'00'



NOTE:
THIS CURTAIN WALL SYSTEM CAN BE ORIENTED VERTICALLY OR HORIZONTALLY AS SHOWN ABOVE.



JAVAD AHMAD PE, inc

8800 NW 23rd St, Miami FL 33172
Ph: (305) 424-8001
support@ja-pe.com

CONSULTING • STRUCTURAL DESIGN • FACADES • BUILDING ENVELOPE • SYSTEM DESIGN • PRODUCT APPROVALS

OGT-700 ALUMINUM WINDOW WALL SYSTEM (LARGE AND SMALL MISSILE IMPACT RATED)

OGT WINDOW PRODUCTS, LLC.

6910 NW 42ND STREET
DORAL, FL 33166
TEL. (305) 594-3999
FAX. (305) 392-9555

GENERAL NOTES:

- THIS PRODUCT HAS BEEN DESIGNED AND TESTED TO COMPLY WITH THE REQUIREMENTS OF THE 2023 (8 TH EDITION) FLORIDA BUILDING CODE INCLUDING HIGH VELOCITY HURRICANE ZONE (HVHZ).
- THIS PRODUCT APPROVAL DRAWING IS A TABULATED PERFORMANCE ANALYSIS OF THE INDIVIDUAL COMPONENTS AND DOES NOT CONTAIN INFORMATION ON EACH PROJECT SITE SPECIFIC CONDITION. STRUCTURAL, WATERPROOFING, SEALING, GUARD, AESTHETICS AND/OR OTHER MISCELLANEOUS REQUIREMENTS MUST BE COORDINATED AND APPROVED BY THE AUTHORITY HAVING JURISDICTION.
- 1BY OR 2BY WOOD BUCKS & BUCK FASTENERS BY OTHERS, MUST BE DESIGNED AND INSTALLED ADEQUATELY TO TRANSFER APPLIED PRODUCT LOADS TO THE BUILDING STRUCTURE.
- ANCHORS SHALL BE CORROSION RESISTANT, SPACED AS SHOWN ON DETAILS AND INSTALLED PER MANUF'S INSTRUCTIONS. SPECIFIED EMBEDMENT TO BASE MATERIAL SHALL BE BEYOND WALL DRESSING OR STUCCO.
- GAURD REQUIREMENTS SHALL BE REVIEWED ON A SITE-SPECIFIC BASIS.
- A LOAD DURATION INCREASE IS USED IN DESIGN OF ANCHORS INTO WOOD ONLY.
- ALL SHIMS TO BE HIGH IMPACT, NON-METALLIC AND NON-COMPRESSIBLE.
- MATERIALS INCLUDING BUT NOT LIMITED TO STEEL/METAL SCREWS, THAT COME INTO CONTACT WITH OTHER DISSIMILAR MATERIALS SHALL MEET THE REQUIREMENTS OF THE 2023 FLORIDA BLDG. CODE & ADOPTED STANDARDS.
- THIS PRODUCT APPROVAL IS GENERIC AND DOES NOT PROVIDE INFORMATION FOR A SITE SPECIFIC PROJECT, i.e. LIFE SAFETY OF THIS PRODUCT, ADEQUACY OF STRUCTURE RECEIVING THIS PRODUCT AND SEALING AROUND OPENING FOR WATER INFILTRATION RESISTANCE ETC.

- CONDITIONS NOT SHOWN IN THIS DRAWING ARE TO BE ANALYZED SEPARATELY, AND TO BE REVIEWED BY BUILDING OFFICIAL.
- DESIGN LOADS SHOWN ARE BASED ON 'ALLOWABLE STRESS DESIGN' (ASD).
- CONTRACTOR TO BE RESPONSIBLE FOR THE SELECTION, PURCHASE AND INSTALLATION OF THIS PRODUCT BASED ON THIS PRODUCT EVALUATION PROVIDED HE/SHE DOES NOT DEVIATE FROM THE CONDITIONS DETAILED ON THIS DOCUMENT.
- THIS PRODUCT EVALUATION DOCUMENT WILL BE CONSIDERED INVALID IF ALTERED BY ANY MEANS.
- SITE SPECIFIC PROJECTS SHALL BE PREPARED BY A FLORIDA REGISTERED ENGINEER OR ARCHITECT WHICH WILL BECOME THE ENGINEER OF RECORD (E.O.R.) FOR THE PROJECT AND WHO WILL BE RESPONSIBLE FOR THE PROPER USE OF THE P.E.D. ENGINEER OF RECORD, ACTING AS A DELEGATED ENGINEER TO THE P.E.D. ENGINEER SHALL SUBMIT TO THIS LATTER THE SITE SPECIFIC DRAWINGS FOR REVIEW.
- THIS P.E.D. SHALL BEAR THE DATE AND ORIGINAL SEAL AND SIGNATURE OF THE PROFESSIONAL ENGINEER OF RECORD THAT PREPARED IT.

INSTRUCTIONS: (CLICK ON THE BUTTON ON THE RIGHT TO DIRECTLY REACH THE DETAIL)

STEP 1 - WIND PRESSURE CALCULATION (BY OTHERS)-
DETERMINE DESIGN WIND LOAD REQUIREMENT BASED ON WIND VELOCITY, BLDG. HEIGHT, WIND ZONE USING APPLICABLE ASCE 7 STANDARD.

STEP 2 GLASS SELECTION
SEE CHARTS ON SHEET **103** FOR DESIGN LOAD CAPACITY OF DESIRED GLASS SIZE. THIS VALUE SHOULD MEET OR EXCEED THE DESIGN WIND LOAD REQUIREMENT OBTAINED IN STEP 1 ABOVE. [CLICK HERE](#)

STEP 3 MULLION SELECTION
• FOR VERTICAL LOAD BEARING MULLIONS- SEE SHEET **104** [CLICK HERE](#)
• FOR HORIZONTAL LOAD BEARING MULLION- SEE SHEET **105** [CLICK HERE](#)

THE CAPACITY SHOULD EXCEED THE DESIGN LOAD. THE LOWEST VALUE RESULTING FROM STEPS 2 AND 3 SHALL APPLY TO ENTIRE SYSTEM.

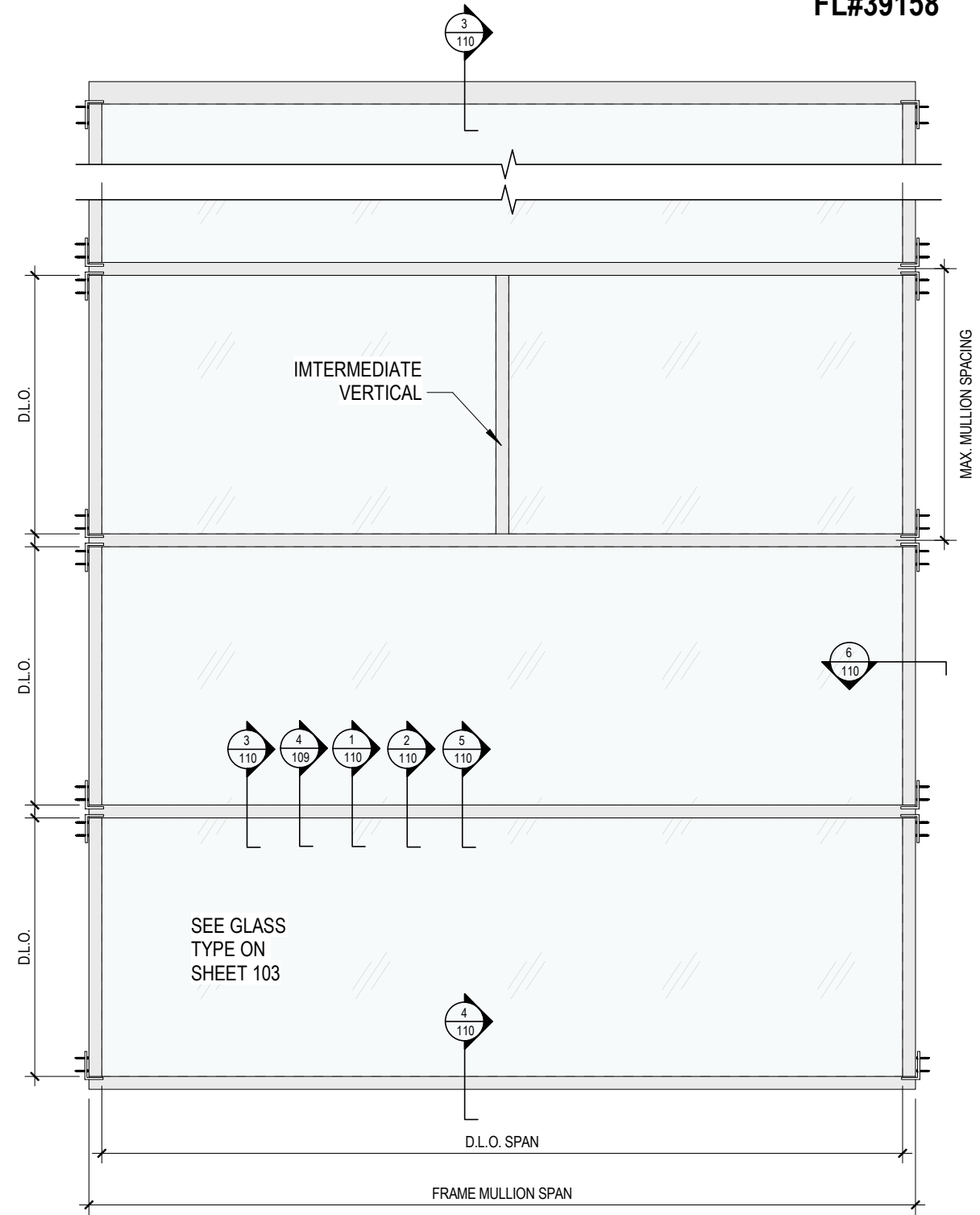
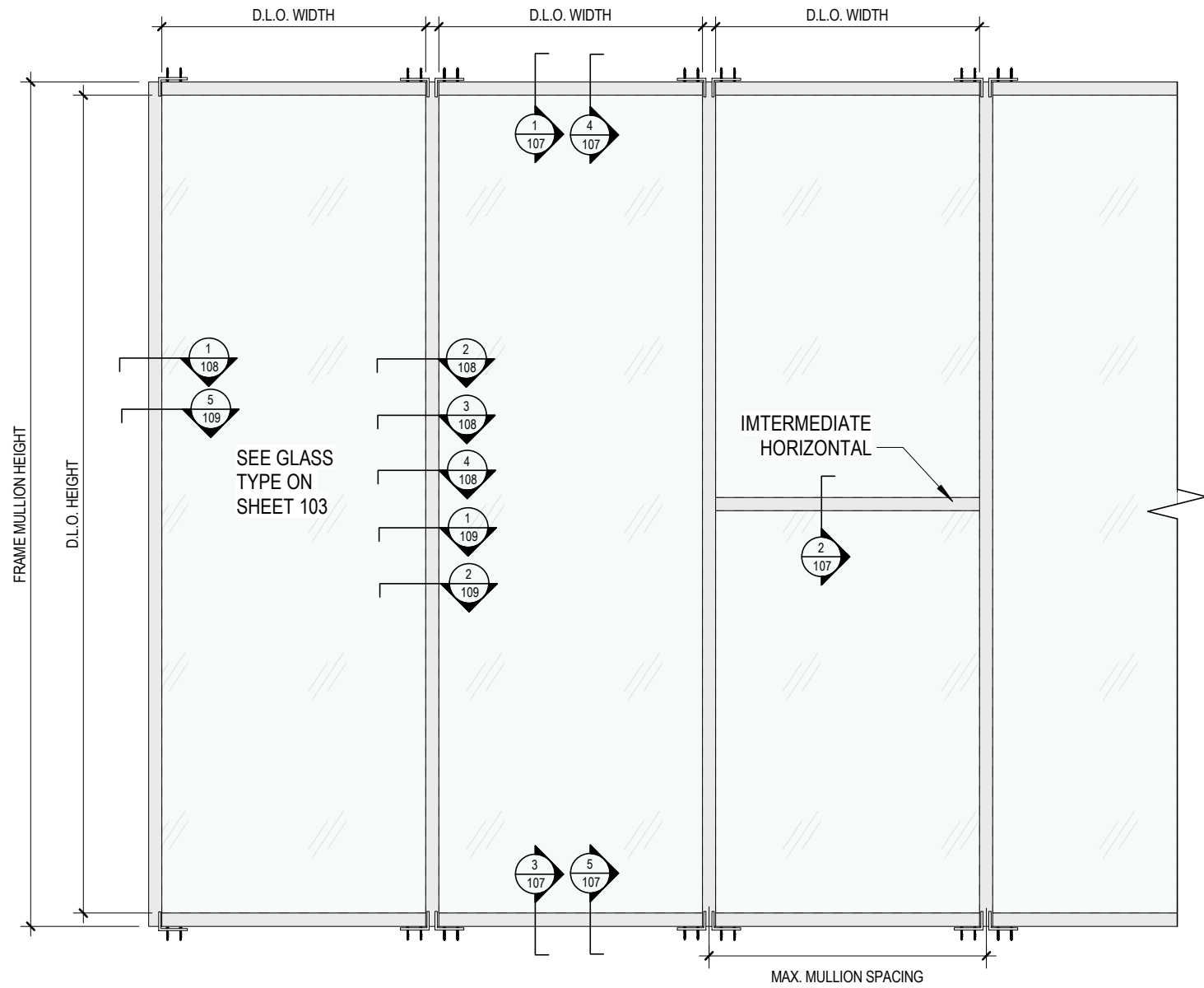
STEP 4 ANCHOR SELECTION
• SELECT APPROPRIATE ANCHOR FROM CHART- SEE SHEET **106**. [CLICK HERE](#)
• SECTIONAL DETAILS- USING F CLIPS AT JAMBS AND T CLIPS AT INTERMEDIATE MULLIONS- SEE SHEET **106** [CLICK HERE](#)

SA	BS	REVISION	DESCRIPTION
drawn by:	check by:		
JA-1692-23	12-06-2023	BY	
drawing no.	date:	DATE	
		No	

Eng: JAVAD AHMAD
CIVIL
FLA PE #70592
C.A.N. 34254

TYPICAL ELEVATIONS

FL#39158



1 VERTICAL MULLION SYSTEM
102 N.T.S.

2 HORIZONTAL MULLION SYSTEM
102 N.T.S.

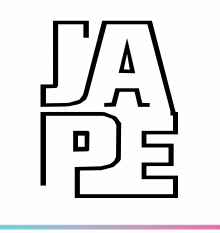
NOTE:

INSTALLATION CAN BE ORIENTED VERTICALLY OR HORIZONTALLY AS SHOWN ABOVE.

SEE FRAME MULLION SPANS, SPACING AND D.L.O. DIMENSIONS FROM THE CHARTS PROVIDED ON SHEETS 104 THROUGH 106.



Digitally signed by Javad Ahmad
Date: 2023.12.22 11:08:15 -05'00'



JAVAD AHMAD PE, inc
8800 NW 23rd St, Miami FL 33172
Ph: (305) 424-8001
support@ja-pe.com

CONSULTING • STRUCTURAL DESIGN • FACADES • BUILDING ENVELOPE • SYSTEM DESIGN • PRODUCT APPROVALS

OGT-700 ALUMINUM WINDOW WALL SYSTEM (LARGE AND SMALL MISSILE IMPACT RATED)
OGT WINDOW PRODUCTS, LLC.
6910 NW 42ND STREET DORAL, FL 33166
TEL. (305) 594-3999 FAX. (305) 392-9555

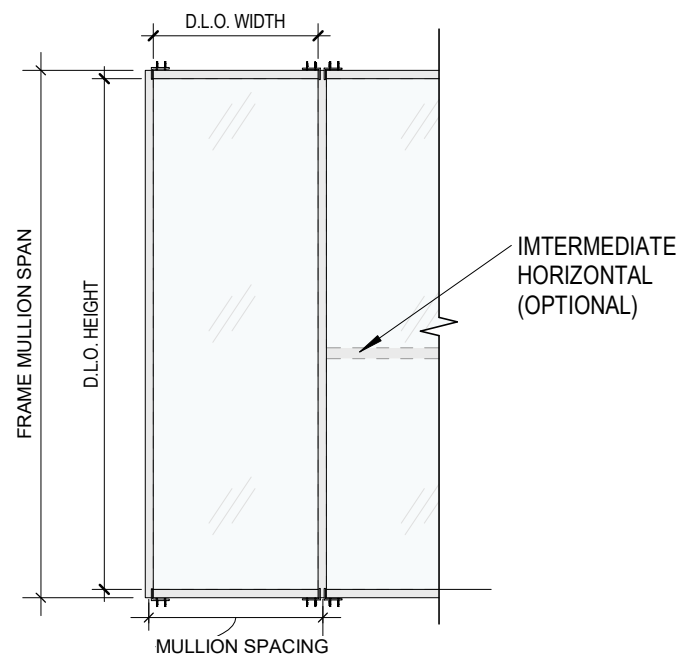
drawing no. JA-1692-23	drawn by: SA	REVISION	DATE	DESCRIPTION
date: 12-06-2023	check by: BS		BY	
		No.		

Eng: JAVAD AHMAD CIVIL
FLA PE #70592
C.A.N. 34254

GLAZING OPTIONS

FL#39158

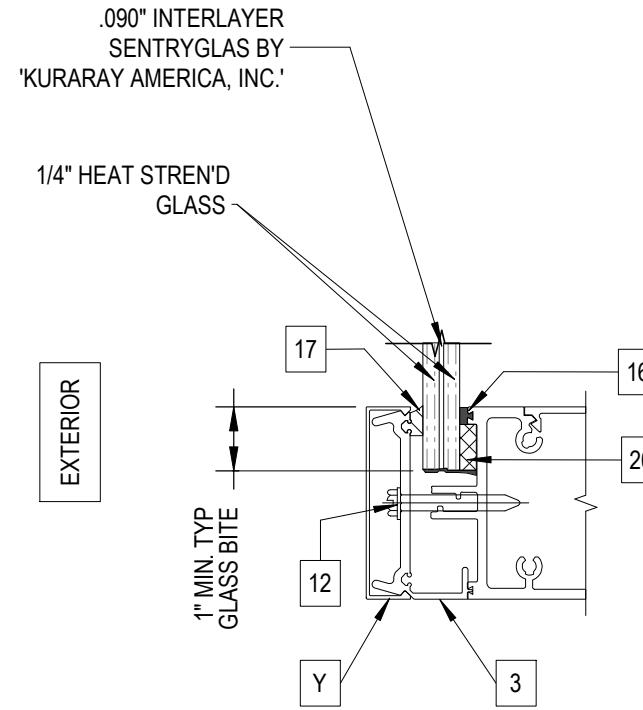
GLASS SELECTION CHART			
FRAME MULLION SPAN	MULLION SPACING	LOAD CAPACITY	
		LAMINATED G2 (PSF)	INSULATED G2I (PSF)
120"	48", 54", 60", 68"	+/-110.0	+/-110.0
	79"	+/- 98.9	+/- 103.5
	82"	+/- 88.2	+/- 92.3
	95"	+/- 82.6	+/- 86.5
132"	36", 42", 48", 54", 60", 68"	+/-110.0	+/-110.0
	79"	+/-85.4	+/-89.4
144"	36", 42", 48", 54", 60"	+/-110.0	+/-110.0
	68"	+/-97.7	+/-102.2
	79"	+/-75.2	+/-78.7
156"	30", 36", 42", 48", 54"	+/-110.0	+/-110.0
	60"	+/-109.1	+/-110.0
	68"	+/-87.7	+/-91.8
168"	36", 42", 48", 54", 60"	+/-110.0	+/-110.0
	68"	+/-99.3	+/-104.0
	79"	+/-79.6	+/-83.3
180"	24", 30", 36", 42", 48", 54", 60"	+/-100.0	+/-100.0
192"	24", 30", 36", 42", 48", 54"	+/-100.0	+/-100.0
	60"	+/-94.4	+/-98.8



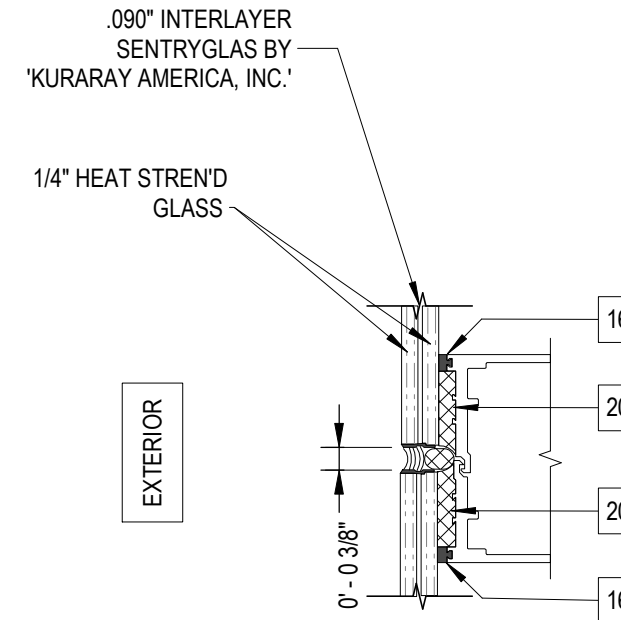
NOTE:

- D.L.O. HEIGHT = FRAME MULLION SPAN - 6"
- D.L.O. WIDTH = MULLION SPACING - 3 1/4"

3 VERTICAL MULLION SYSTEM- TYPICAL ELEVATION A
103 N.T.S.

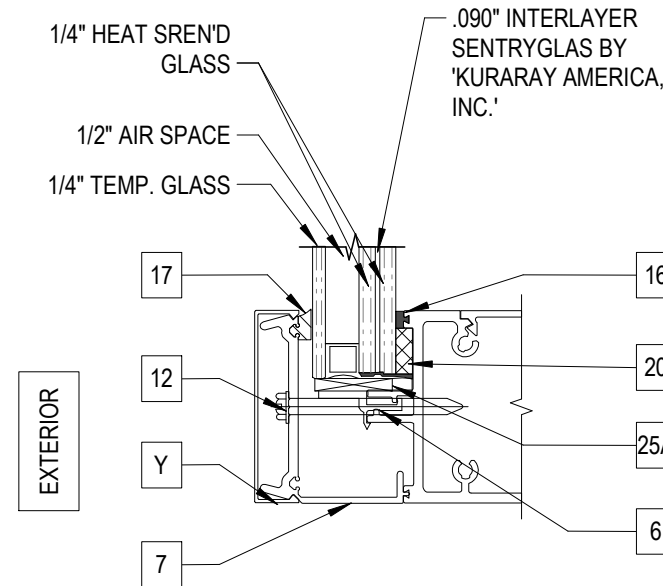


1 GLASS TYPE G2- WITH COVER CLIP
103 N.T.S.

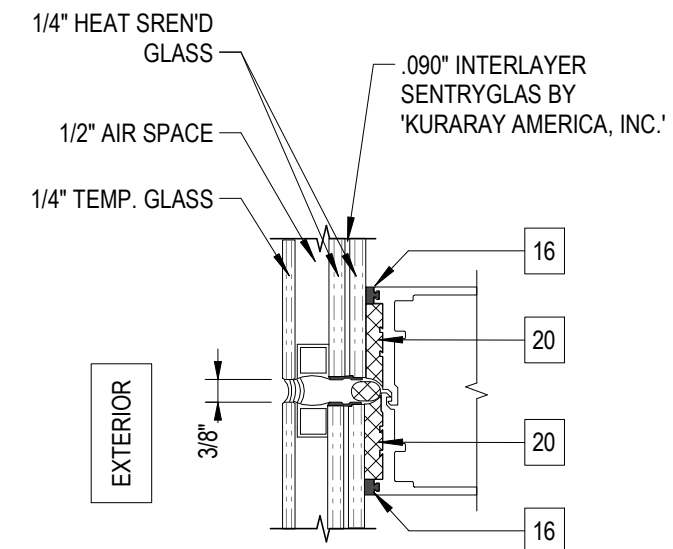


2 GLASS TYPE G2- BUTT GLAZED
103 N.T.S.

Digitally signed by Javad Ahmad
Date: 2023.12.22 11:08:15 -05'00'



X GLASS TYPE G2I- WITH COVER CLIP
103 N.T.S.



4 GLASS TYPE G2I- BUTT GLAZED
103 N.T.S.



JAVAD AHMAD PE, inc
8800 NW 23rd St, Miami FL 33172
Ph: (305) 424-8001
support@ja-pe.com

OGT-700 ALUMINUM WINDOW WALL SYSTEM (LARGE AND SMALL MISSILE IMPACT RATED)

OGT WINDOW PRODUCTS, LLC.
6910 NW 42ND STREET DORAL, FL 33166
TEL. (305) 594-3999 FAX. (305) 392-9555

SA	BS	REVISION	DESCRIPTION
drawing no. JA-1692-23	drawn by: 12-06-2023		
date:		DATE	BY
		No.	

Eng: JAVAD AHMAD CIVIL
FLA PE #70592
C.A.N. 34254

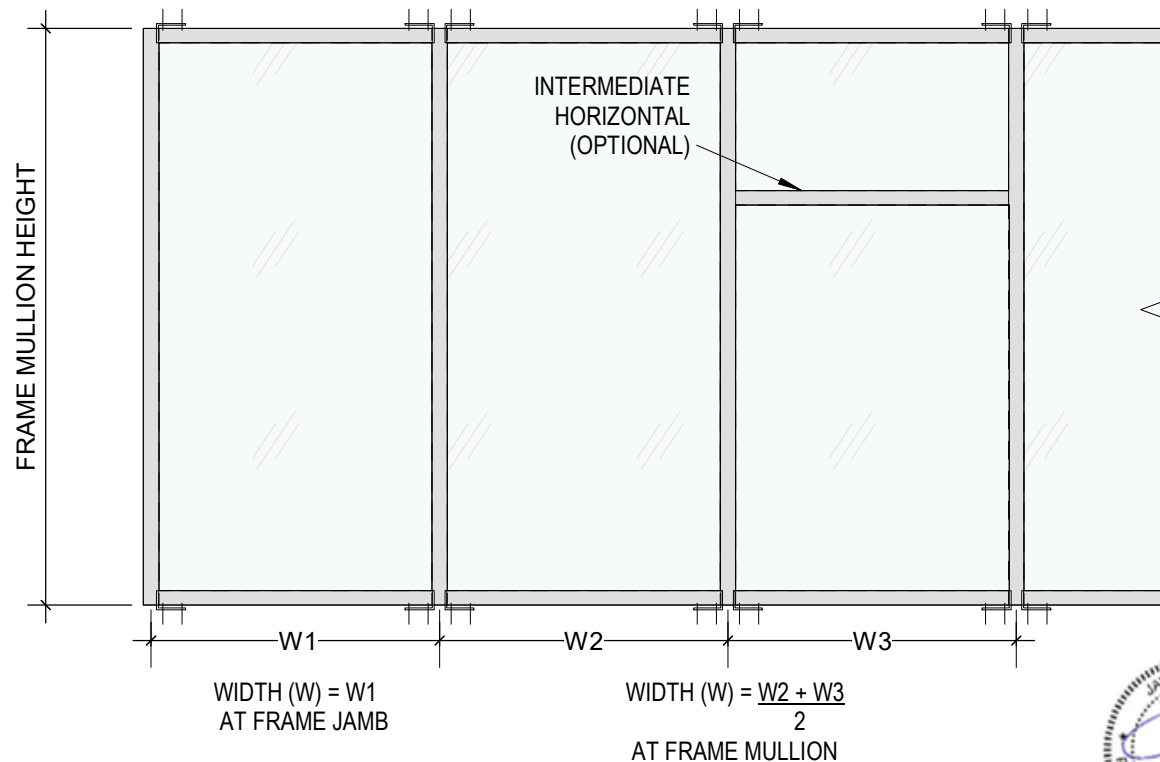
CONSULTING • STRUCTURAL DESIGN • FACADES • BUILDING ENVELOPE • SYSTEM DESIGN • PRODUCT APPROVALS

MULLION LOADING CHARTS WITH OR WITHOUT INTERMEDIATE HORIZONTALS

NOTE:
GLASS CAPACITIES ON THIS SHEET ARE BASED ON ASTM E1300-16 (3 SEC. GUSTS)

FL#39158

ITEM	TYPICAL SECTION	SECTIONAL PROPERTIES	
		MOMENT OF INERTIA (Ix) IN ⁴	SECTION MODULUS (Sx) IN ³
MULLION 'M1' & 'J1' NO REINF.		23.7783	6.435
MULLION 'M2' & 'J2' ALUM. REINF.		35.5415	9.829
HEAD & SILL & INTERMEDIATE NO REINF.		22.7340	5.841
MULLION 'M3' ALUM. REINF.		47.2767	13.178
MULLION 'M4' ALUM. REINF.		47.2443	13.129
MULLION 'M5' STEEL REINF.		ALUM. 23.7783 STEEL 22.0275	ALUM. 6.435 STEEL 6.998



VERTICAL MULLION LOAD CAPACITY - PSF						
NOMINAL DIMENSIONS		JAMB 'J1'	JAMB 'J1'	JAMB 'J1'	JAMB 'J1'	JAMB 'J2'
FRAME MULLION HEIGHT	MULLION SPACINGS	MULL 'M1'	MULL 'M2'	MULL 'M3'	MULL 'M4'	MULL 'M5'
		EXT. (+) INT. (-)	EXT. (+) INT. (-)	EXT. (+) INT. (-)	EXT. (+) INT. (-)	EXT. (+) INT. (-)
120"	48", 54", 60"	110.0	110.0	110.0	110.0	110.0
	68"	99.3	110.0	110.0	110.0	110.0
	79"	85.5	110.0	110.0	110.0	110.0
	82"	82.4	110.0	110.0	110.0	110.0
	95"	71.1	108.6	110.0	110.0	110.0
132"	36", 42", 48"	110.0	110.0	110.0	110.0	110.0
	54"	102.0	110.0	110.0	110.0	110.0
	60"	91.8	110.0	110.0	110.0	110.0
	68"	81.0	110.0	110.0	110.0	110.0
	79"	69.7	106.5	110.0	110.0	110.0
144"	36"	110.0	110.0	110.0	110.0	110.0
	42"	108.8	110.0	110.0	110.0	110.0
	48"	95.2	110.0	110.0	110.0	110.0
	54"	84.6	110.0	110.0	110.0	110.0
	60"	76.2	110.0	110.0	110.0	110.0
	68"	67.2	102.6	110.0	110.0	110.0
	79"	57.8	88.3	110.0	110.0	110.0
156"	30"	110.0	110.0	110.0	110.0	110.0
	36"	106.8	110.0	110.0	110.0	110.0
	42"	91.5	110.0	110.0	110.0	110.0
	48"	80.1	110.0	110.0	110.0	110.0
	54"	71.2	107.6	110.0	110.0	110.0
	60"	64.1	96.8	110.0	110.0	110.0
	68"	56.5	85.4	110.0	110.0	110.0
	79"	45.8	68.4	91.0	90.9	110.0
168"	30"	103.7	110.0	110.0	110.0	110.0
	36"	86.4	110.0	110.0	110.0	110.0
	42"	74.1	110.0	110.0	110.0	110.0
	48"	64.8	96.9	110.0	110.0	110.0
	54"	57.6	86.1	110.0	110.0	110.0
	60"	51.9	77.5	103.1	103.0	110.0
180"	24"	100.0	100.0	100.0	100.0	100.0
	30"	84.3	100.0	100.0	100.0	100.0
	36"	70.3	100.0	100.0	100.0	100.0
	42"	60.2	90.0	100.0	100.0	100.0
	48"	52.7	78.8	100.0	100.0	100.0
	54"	46.9	70.0	93.2	93.1	100.0
	60"	42.2	63.0	83.8	83.8	100.0
192"	24"	86.9	100.0	100.0	100.0	100.0
	30"	69.5	100.0	100.0	100.0	100.0
	36"	57.9	86.6	100.0	100.0	100.0
	42"	49.6	74.2	98.7	98.6	100.0
	48"	43.4	64.9	86.4	86.3	100.0
	60"	34.7	51.9	69.1	69.0	100.0

Digitally signed
by Javad
Ahmad
Date:
2023.12.22
11:08:15 -05'00'



JAVAD AHMAD PE, inc
8800 NW 23rd St, Miami FL
33172
Ph: (305) 424-8001
support@ja-pe.com

OGT-700 ALUMINUM WINDOW
WALL SYSTEM
(LARGE AND SMALL MISSILE IMPACT RATED)

OGT WINDOW PRODUCTS, LLC.
6910 NW 42ND STREET
DORAL, FL 33166
TEL. (305) 594-3999
FAX. (305) 392-9555

drawing no. JA-1692-23	drawn by:	SA
date: 12-06-2023	check by:	BS
REVISION		
No.	DATE	DESCRIPTION

Eng: JAVAD AHMAD
CIVIL
FLA PE #70592
C.A.N. 34254

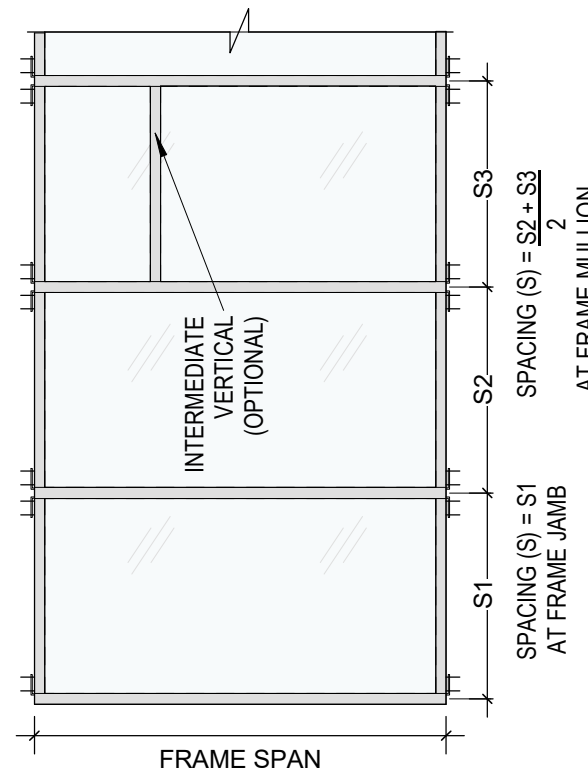
HORIZONTAL MULLION LOADING CHARTS WITH OR WITHOUT INTERMEDIATE VERTICALS

FL#39158

HORIZONTAL MULLION LOAD CAPACITY -PSF

NOMINAL DIMENSIONS		MULL M1	MULL 'M2'	MULL 'M3'	MULL M4	MULL M5	HJ1 (M2)	'HJ2 (M3)
FRAME SPAN	SPACING (S)	EXT. (+)	EXT. (+)	EXT. (+)	EXT. (+)	EXT. (+)	EXT. (+)	EXT. (+)
		INT. (-)	INT. (-)	INT. (-)	INT. (-)	INT. (-)	INT. (-)	INT. (-)
120"	46", 54"	110.0	110.0	110.0	110.0	110.0	110.0	110.0
	60"	103.0	110.0	110.0	110.0	110.0	110.0	110.0
	68"	87.9	110.0	110.0	110.0	110.0	110.0	110.0
	79"	72.1	110.0	110.0	110.0	110.0	110.0	110.0
	82"	68.5	106.7	110.0	110.0	110.0	110.0	110.0
132"	95"	55.6	87.0	110.0	110.0	110.0	110.0	110.0
	36", 42"	110.0	110.0	110.0	110.0	110.0	110.0	110.0
	48"	106.9	110.0	110.0	110.0	110.0	110.0	110.0
	54"	92.2	110.0	110.0	110.0	110.0	110.0	110.0
	60"	80.3	110.0	110.0	110.0	110.0	110.0	110.0
144"	68"	67.8	105.7	110.0	110.0	110.0	110.0	110.0
	79"	54.8	85.7	110.0	110.0	110.0	110.0	110.0
	36"	110.0	110.0	110.0	110.0	110.0	110.0	110.0
	42"	101.3	110.0	110.0	110.0	110.0	110.0	110.0
	48"	85.4	110.0	110.0	110.0	110.0	110.0	110.0
156"	54"	72.9	110.0	110.0	110.0	110.0	110.0	110.0
	60"	63.0	98.4	110.0	110.0	110.0	110.0	110.0
	68"	51.7	82.3	110.0	110.0	110.0	110.0	110.0
	79"	-	65.5	109.6	92.4	110.0	110.0	110.0
	30"	110.0	110.0	110.0	110.0	110.0	110.0	110.0
168"	36"	95.1	110.0	110.0	110.0	110.0	110.0	110.0
	42"	77.2	110.0	110.0	110.0	110.0	110.0	110.0
	48"	62.9	105.6	110.0	110.0	110.0	110.0	110.0
	54"	50.8	89.9	110.0	110.0	110.0	110.0	110.0
	60"	-	76.7	110.0	98.3	110.0	110.0	110.0
180"	68"	-	61.7	99.5	77.4	110.0	110.0	110.0
	30"	90.3	110.0	110.0	110.0	110.0	110.0	110.0
	36"	69.8	110.0	110.0	110.0	110.0	110.0	110.0
	42"	53.7	93.7	110.0	110.0	110.0	110.0	110.0
	48"	40.0	76.8	110.0	98.4	110.0	110.0	110.0
192"	54"	-	62.7	110.6	78.8	110.0	110.0	110.0
	60"	-	50.2	87.3	60.9	110.0	100.4	110.0
	68"	-	-	72.6	-	110.0	69.0	110.0
	24"	92.3	100.0	100.0	100.0	100.0	100.0	100.0
	30"	67.2	100.0	100.0	100.0	100.0	100.0	100.0
180"	36"	48.3	86.9	100.0	100.0	100.0	100.0	100.0
	42"	-	68.0	100.0	86.1	100.0	100.0	100.0
	48"	-	52.1	89.3	63.7	100.0	100.0	100.0
	54"	-	-	-	-	100.0	75.3	100.0
	60"	-	-	-	-	100.0	44.0	100.0
192"	24"	70.3	100.0	100.0	100.0	100.0	100.0	100.0
	30"	47.2	85.4	100.0	100.0	100.0	100.0	100.0
	36"	-	63.3	100.0	79.6	100.0	100.0	100.0
	42"	-	44.9	82.1	53.1	100.0	89.8	100.0
	48"	-	-	66.7	-	100.0	53.9	100.0
192"	54"	-	-	53.7	-	100.0	-	100.0
	60"	-	-	42.0	-	100.0	-	84.0

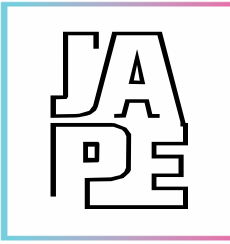
ITEM	TYPICAL SECTION	SECTIONAL PROPERTIES			
		MOMENT OF INERTIA (Ix) IN ⁴	SECTION MODULUS (Sx) IN ³	MOMENT OF INERTIA (Iy) IN ⁴	SECTION MODULUS (Sy) IN ³
MULLION 'M1' NO REINF.		23.7783	6.435	5.5924	3.438
MULLION 'M2' & 'HJ1' ALUM. REINF.		35.5415	9.829	7.2218	3.629
HEAD & SILL & INTERMEDIATE NO REINF.		22.7340	5.841	22.7340	5.841
MULLION 'M3' & 'HJ2' ALUMN. REINF.		47.2767	13.178	10.3455	6.318
MULLION 'M4' ALUMN. REINF.		47.2443	13.129	6.8228	4.130
MULLION 'M5' ALUMN. REINF.		ALUM. 23.7783 STEEL 22.0275	ALUM. 6.435 STEEL 6.998	ALUM. 5.5924 STEEL 5.5924	ALUM. 3.438 STEEL 3.438



Digitally signed by Javad Ahmad
Date: 2023.12.22 11:08:15 -05'00'

2
105

HORIZONTAL MULLION SYSTEM - TYPICAL ELEVATION A
N.T.S.



JAVAD AHMAD PE, inc
8800 NW 23rd St, Miami FL 33172
Ph: (305) 424-8001
support@ja-pe.com

OGT-700 ALUMINUM WINDOW WALL SYSTEM (LARGE AND SMALL MISSILE IMPACT RATED)

OGT WINDOW PRODUCTS, LLC.
6910 NW 42ND STREET DORAL, FL 33166
TEL. (305) 594-3999
FAX. (305) 392-9555

SA	BS	drawing no. JA-1692-23	drawn by:	date: 12-06-2023	check by:	REVISION	BY	DESCRIPTION
							DATE	

Eng: JAVAD AHMAD CIVIL
FLA PE #70592
C.A.N. 34254

ANCHORING CHART

FL#39158



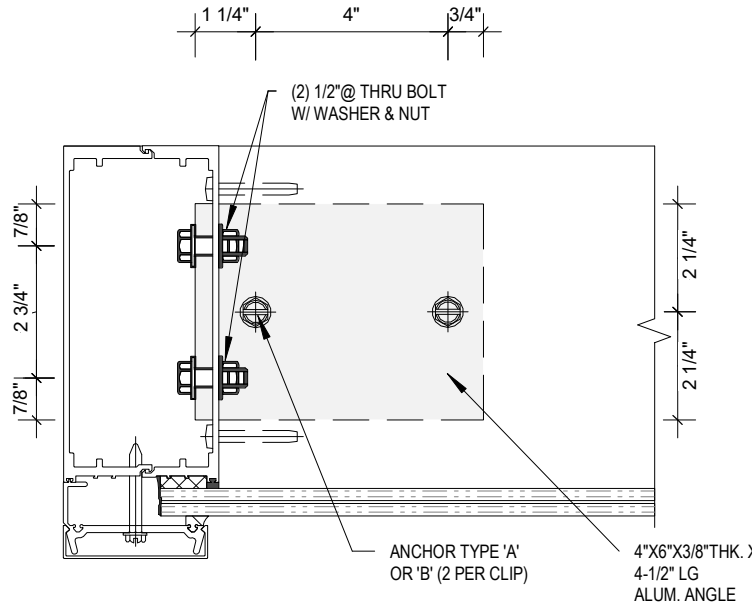
JAVAD AHMAD PE, inc
 8800 NW 23rd St, Miami FL
 33172
 Ph: (305) 424-8001
 support@ja-pe.com

OGT-700 ALUMINUM WINDOW
 WALL SYSTEM
 (LARGE AND SMALL MISSILE IMPACT RATED)

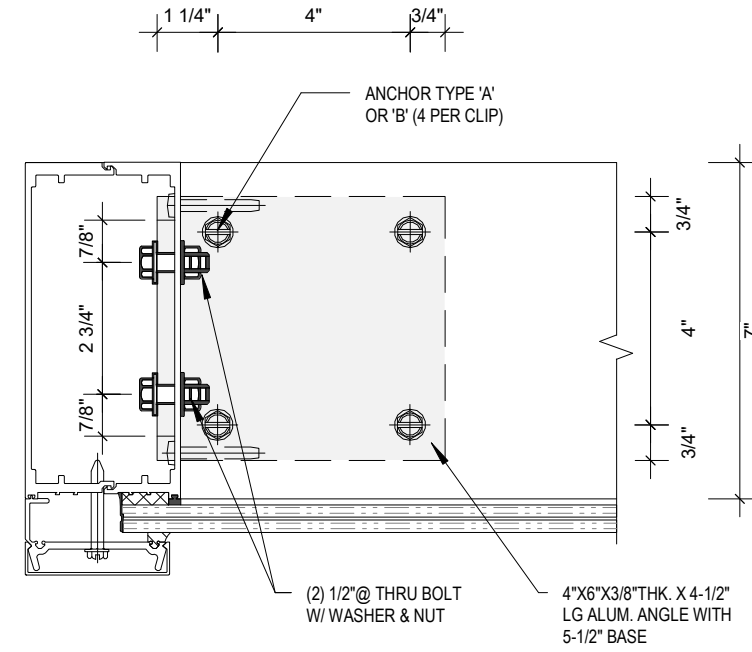
OGT WINDOW PRODUCTS, LLC.

6910 NW 42ND STREET
 DORAL, FL 33166
 TEL. (305) 594-3999
 FAX. (305) 392-9555

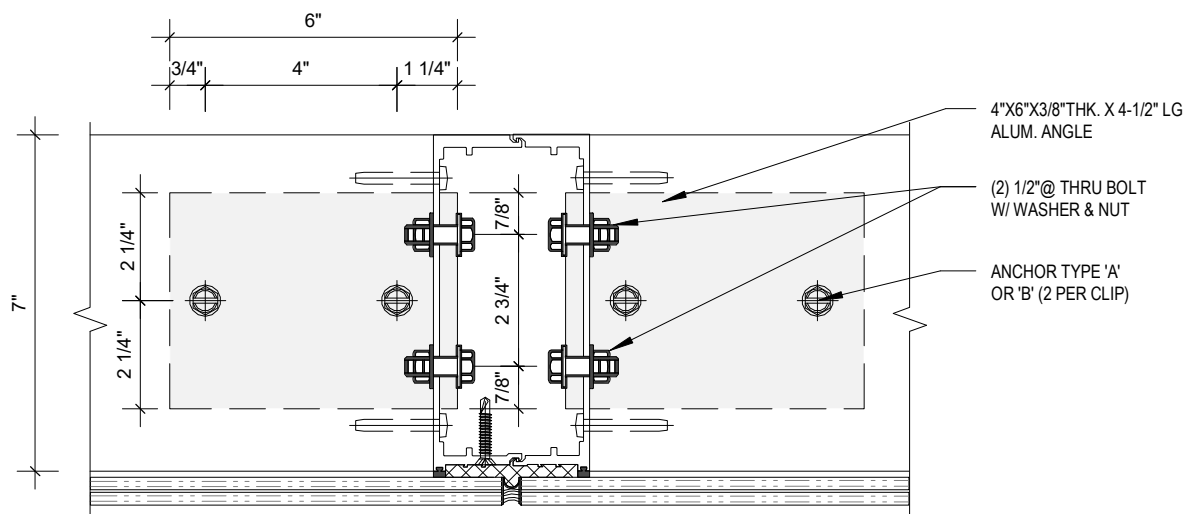
ANCHOR SELECTION CHART							
SPAN	SPACING	T-CLIP STEEL (PSF)	(2) ANCHOR F-CLIP STEEL (PSF)	(4) ANCHOR F-CLIP STEEL (PSF)	T-CLIP CONCRETE (PSF)	(2) ANCHOR F-CLIP CONCRETE (PSF)	(4) ANCHOR F-CLIP CONCRETE (PSF)
120"	48"	110	100	110	110	100	110
	54"	110	88.9	110	110	88.9	110
	60"	110	80	110	110	80	110
	68"	110	70.6	110	110	70.6	110
	79"	110	60.8	110	110	60.8	110
	82"	110	58.5	110	110	58.5	110
132"	95"	110	50.5	101.1	110	50.5	101.1
	36"	110	110	110	110	110	110
	42"	110	103.9	110	110	103.9	110
	48"	110	90.9	110	110	90.9	110
	546"	110	80.8	110	110	80.8	110
	60"	110	72.7	110	110	72.7	110
144"	68"	110	64.2	110	110	64.2	110
	79"	110	55.2	110	110	55.2	110
	36"	110	110	110	110	110	110
	42"	110	95.2	110	110	95.2	110
	48"	110	83.3	110	110	83.3	110
	54"	110	74.1	110	110	74.1	110
156"	60"	110	66.7	110	110	66.7	110
	68"	110	58.8	110	110	58.8	110
	79"	110	50.6	101.3	110	50.6	101.3
	30"	110	110.0	110	110	110	110
	36"	110	102.6	110	110	102.6	110
	42"	110	87.9	110	110	87.9	110
168"	48"	110	76.9	110	110	76.9	110
	54"	110	68.4	110	110	68.4	110
	60"	110	61.5	110	110	61.5	110
	68"	110	54.3	108.7	110	54.3	108.7
	36"	110	110	110	110	110	110
	42"	110	95.2	110	110	95.2	110
180"	48"	110	81.6	110	110	81.6	110
	54"	110	71.4	110	110	71.4	110
	60"	110	63.5	110	110	63.5	110
	68"	110	57.1	110	110	57.1	110
	79"	110	50.4	100.9	110	50.4	100.9
	24"	100	100	100	100	100	100
192"	30"	100	100	100	100	100	100
	36"	100	88.9	100	100	88.9	100
	42"	100	76.2	100	100	76.2	100
	48"	100	66.7	100	100	66.7	100
	54"	100	59.3	100	100	59.3	100
	60"	100	53.3	100	100	53.3	100
192"	24"	100	100	100	100	100	100
	30"	100	100	100	100	100	100
	36"	100	83.3	100	100	83.3	100
	42"	100	71.4	100	100	71.4	100
	48"	100	62.5	100	100	62.5	100
	54"	100	55.6	100	100	55.6	100
60"	100	50	100	100	50	100	



1
106 F-CLIP WITH (2) ANCHORS AT EDGE MULLIONS
N.T.S



2
106 F-CLIP WITH (4) ANCHORS AT EDGE MULLIONS
N.T.S.



3
106 T-CLIP AT INTERMEDIATE MULLION
N.T.S

Digitally signed
 by Javad
 Ahmad
 Date:
 2023.12.22
 11:08:15 -05'00'



JAVAD AHMAD PE, inc
 8800 NW 23rd St, Miami FL
 33172
 Ph: (305) 424-8001
 support@ja-pe.com

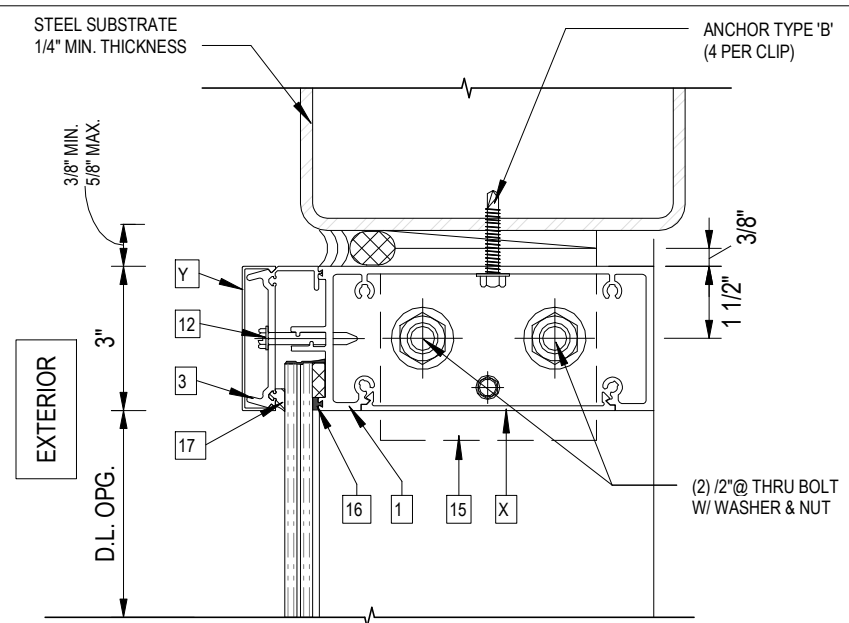
CONSULTING • STRUCTURAL DESIGN • FACADES • BUILDING ENVELOPE • SYSTEM DESIGN • PRODUCT APPROVALS

NOTE:
 WOOD, CONCRETE AND METAL STRUCTURE NOT BY O.G.T
 MUST SUSTAIN LOADS IMPOSED BY GLAZING SYSTEM
 AND TRANSFER THEM TO BUILDING STRUCTURE

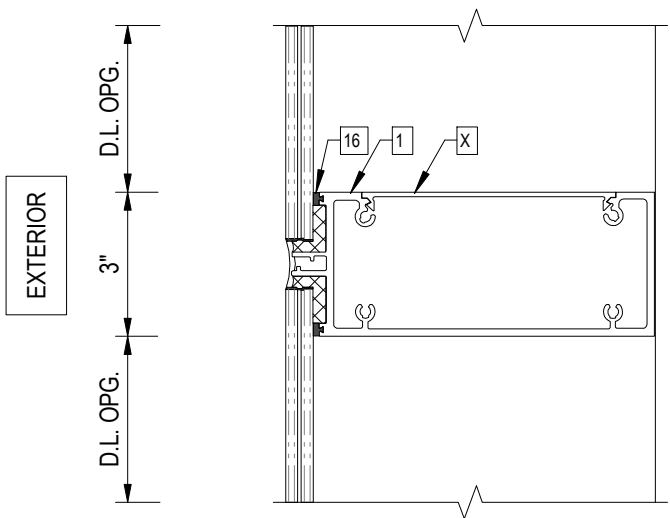
ANCHORS THRU CLIP ANGLE:
TYPE 'A' - 1/2" DIA. KWIK BOLT 3 EXPANSION ANCHOR-
 DIRECTLY INTO CONCRETE
 3-1/2" MIN. EMBED INTO CONCRETE
 3-3/4" MIN. EDGE DISTANCE
 3-3/4" MIN. CL TO CL SPACING
TYPE 'B' - 5/16" DIA. MACHINE SCREW (GR. 5) OR SMS-
 INTO METAL STRUCTURES (STEEL 1/4" MIN. THK.)
 1" MIN. EDGE DISTANCE
 1 MIN. CL TO CL SPACING

ANCHOR HEAD NOTES:
 INSTALLER SHALL ENSURE THAT ANCHOR HEADS ARE
 CLEARLY
 VISIBLE FOR INSPECTION. FLAT AND/OR HEX HEADS ARE
 ALLOWED/INTER CHANGEABLE.

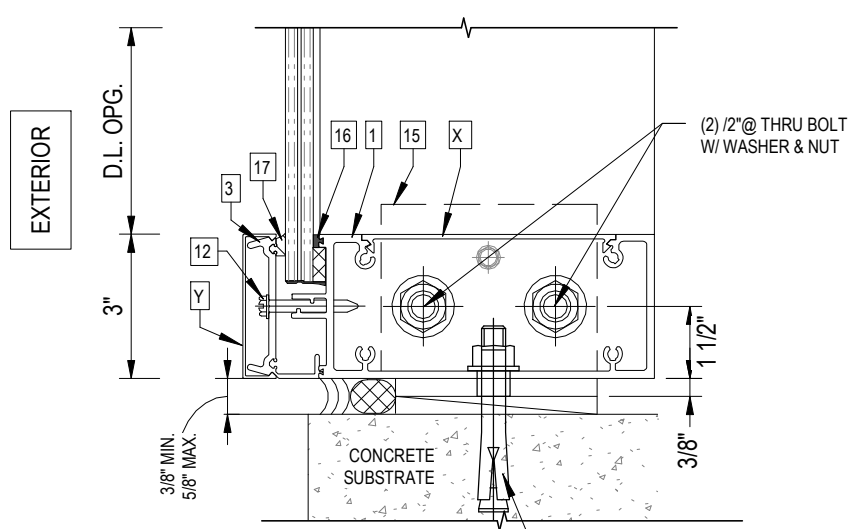
SEALANTS:
 ALL FRAME CORNERS, JOINTS, MULLION SEAMS AND
 PERIMETER
 OF GLAZING BEAD TO FRAME SEALED WITH DOW
 CORNING 995 OR GE2000 SEALANT.



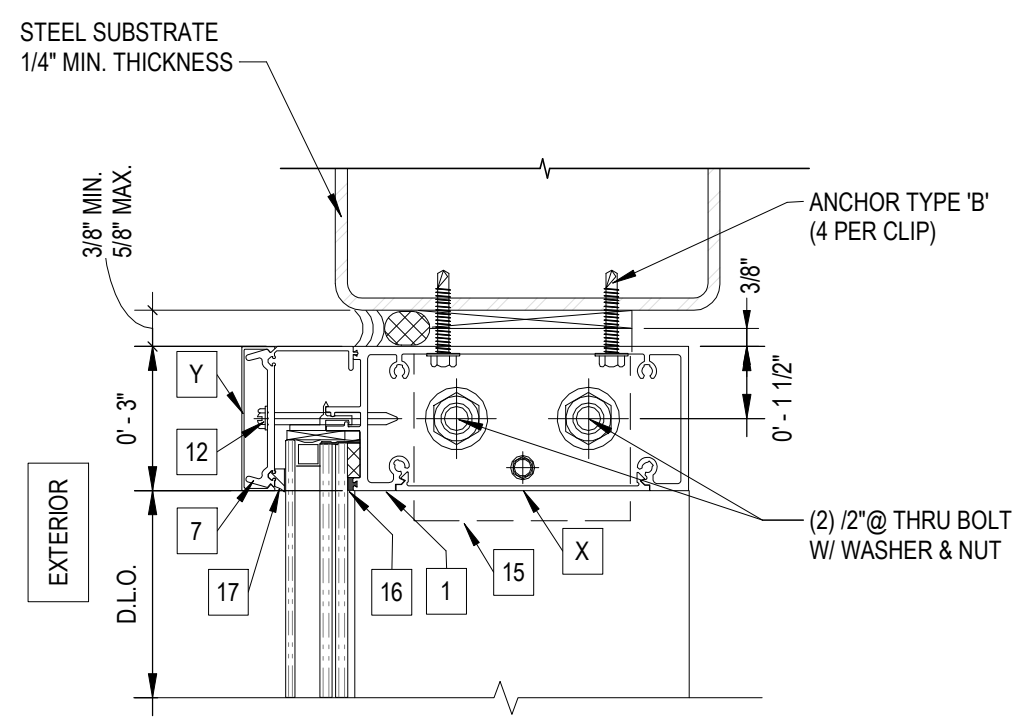
1
 107 **SECTIONAL DETAIL 1**
 N.T.S.



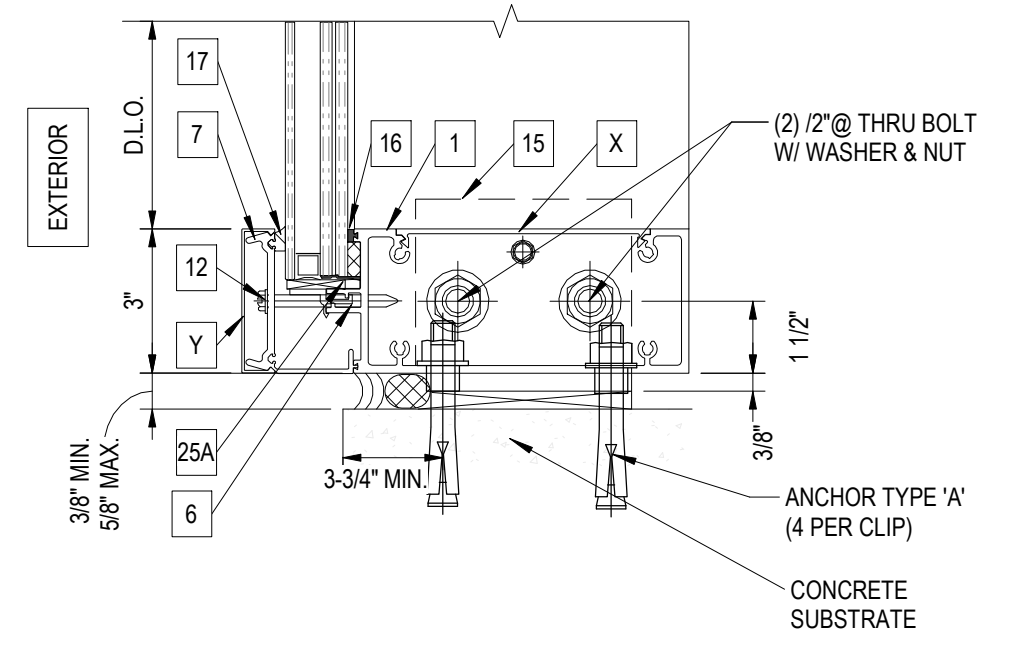
2
 107 **SECTIONAL DETAIL 2**
 N.T.S.



3
 107 **SECTIONAL DETAIL 3**
 N.T.S.



4
 107 **SECTIONAL DETAIL 4**
 N.T.S.



5
 107 **SECTIONAL DETAIL 5**
 N.T.S.



Digitally signed
 by Javad
 Ahmad
 Date:
 2023.12.22
 11:08:15 -05'00'

OGT-700 ALUMINUM WINDOW
 WALL SYSTEM
 (LARGE AND SMALL MISSILE IMPACT RATED)

OGT WINDOW PRODUCTS, LLC.
 6910 NW 42ND STREET
 DORAL, FL 33166
 TEL. (305) 594-3999
 FAX. (305) 392-9555

drawing no.	JA-1692-23	drawn by:	SA
date:	12-06-2023	check by:	BS
REVISION		BY	DESCRIPTION
No.			

Eng: JAVAD AHMAD
 CIVIL
 FLA PE #70592
 C.A.N. 34254

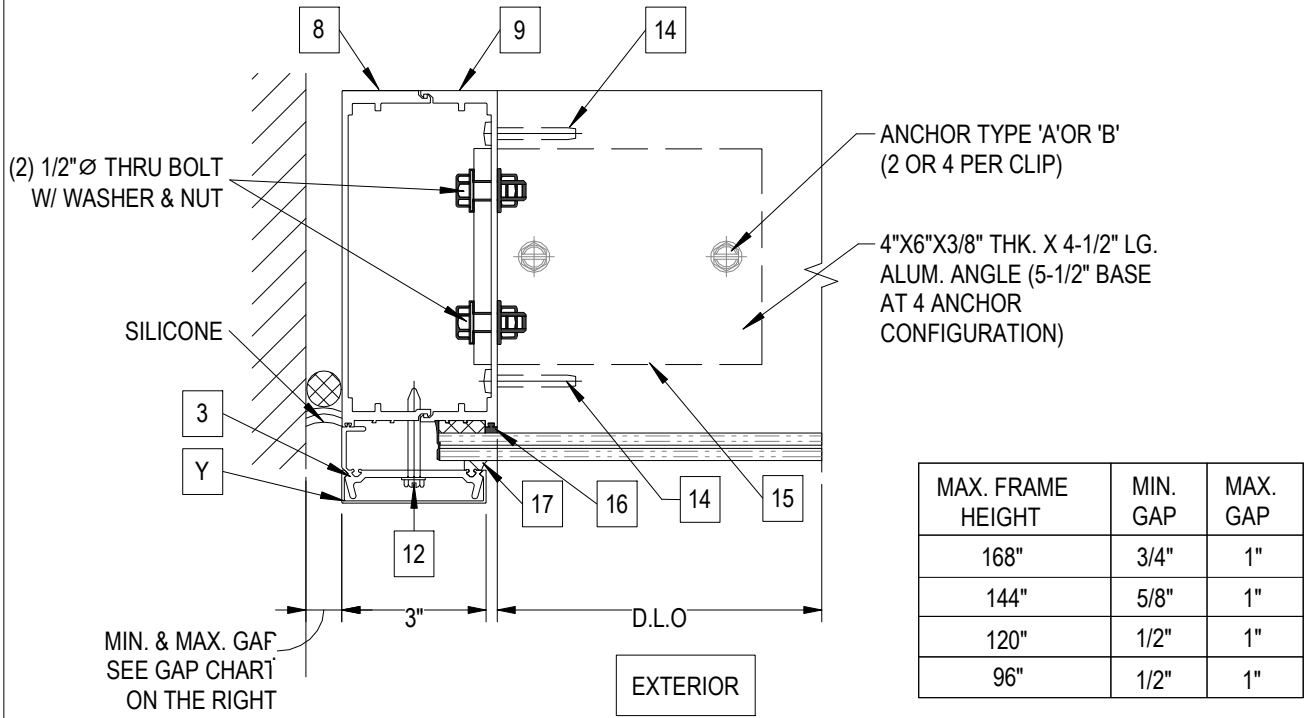


JAVAD AHMAD PE, inc
 8800 NW 23rd St, Miami FL
 33172
 Ph: (305) 424-8001
 support@ja-pe.com

CONSULTING • STRUCTURAL DESIGN • FACADES • BUILDING ENVELOPE • SYSTEM DESIGN • PRODUCT APPROVALS

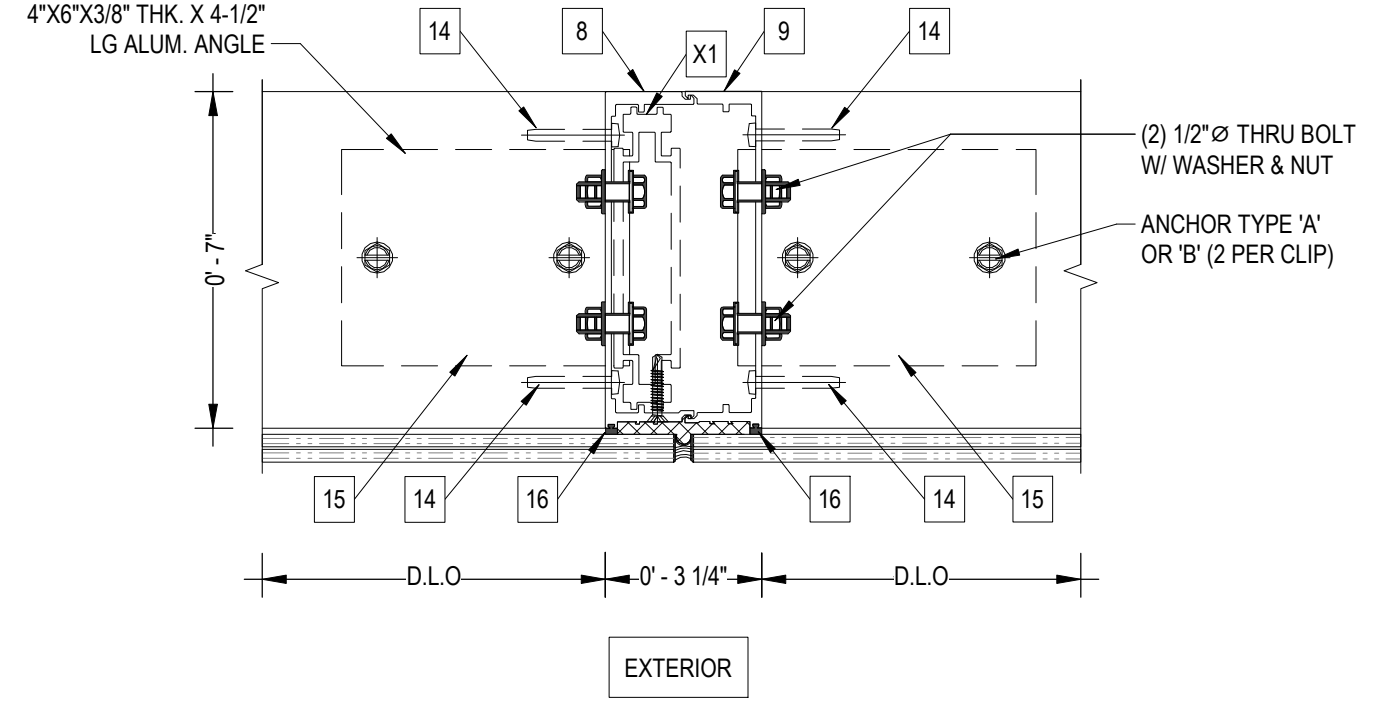
OGT-700 ALUMINUM WINDOW
 WALL SYSTEM
 (LARGE AND SMALL MISSILE IMPACT RATED)

OGT WINDOW PRODUCTS, LLC.
 6910 NW 42ND STREET
 DORAL, FL 33166
 TEL. (305) 594-3999
 FAX. (305) 392-9555

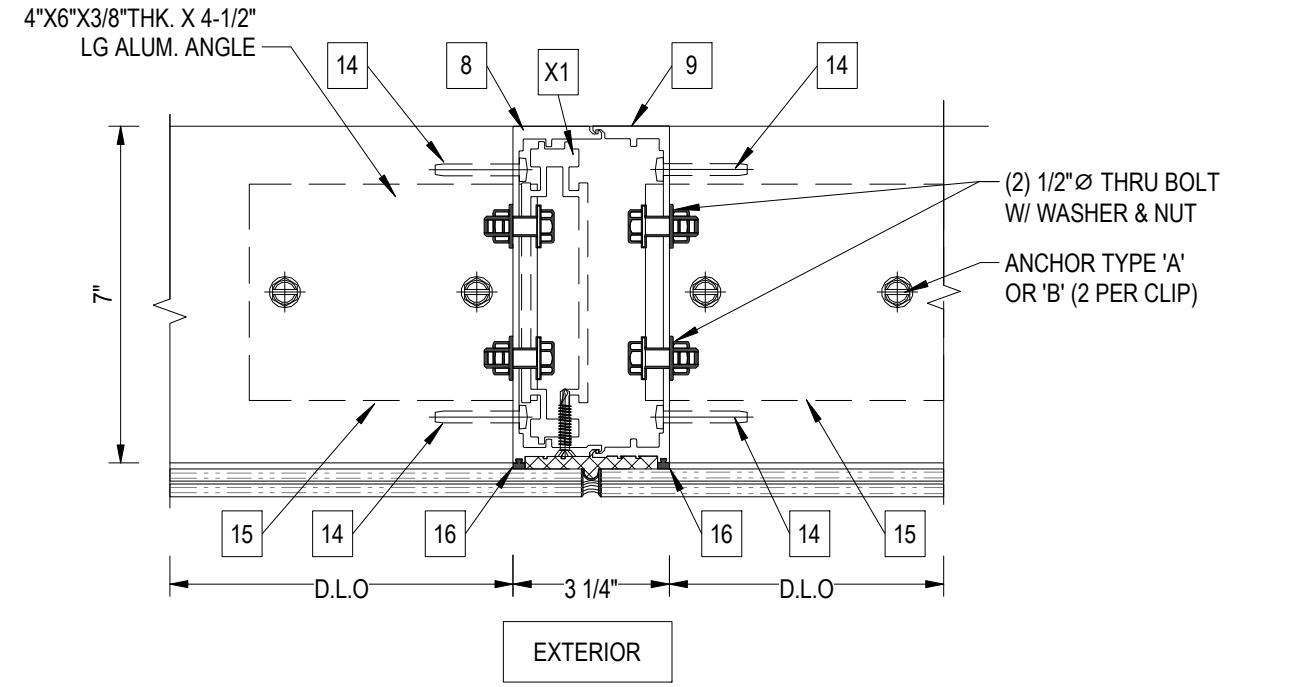


MAX. FRAME HEIGHT	MIN. GAP	MAX. GAP
168"	3/4"	1"
144"	5/8"	1"
120"	1/2"	1"
96"	1/2"	1"

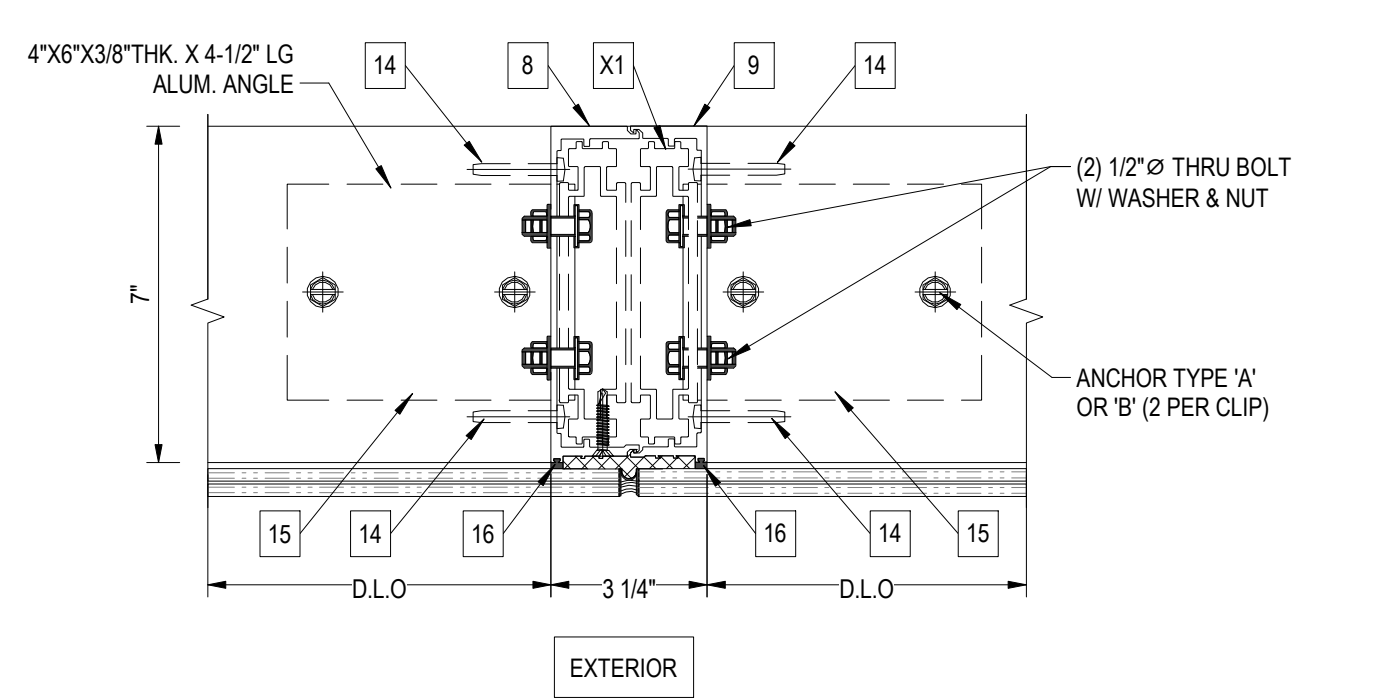
1
108 **JAMB 'J1' WITHOUT REINFORCEMENT**
N.T.S.



2
108 **INTERMEIATE VERTICAL MULLION 'M1' WITHOUT REINFORCEMENT**
N.T.S.



3
108 **INTERMEIATE VERTICAL MULLION 'M2' WITH ALUMINUM REINFORCEMENT**
N.T.S.



4
108 **INTERMEIATE VERTICAL MULLION 'M3' WITH ALUMINUM REINFORCEMENT**
N.T.S.



Digitally signed
 by Javad
 Ahmad
 Date:
 2023.12.22
 11:08:15 -05'00'

SA	BS	REVISION	DESCRIPTION
drawing no. JA-1692-23	drawn by:		
date: 12-06-2023	check by:	No.	

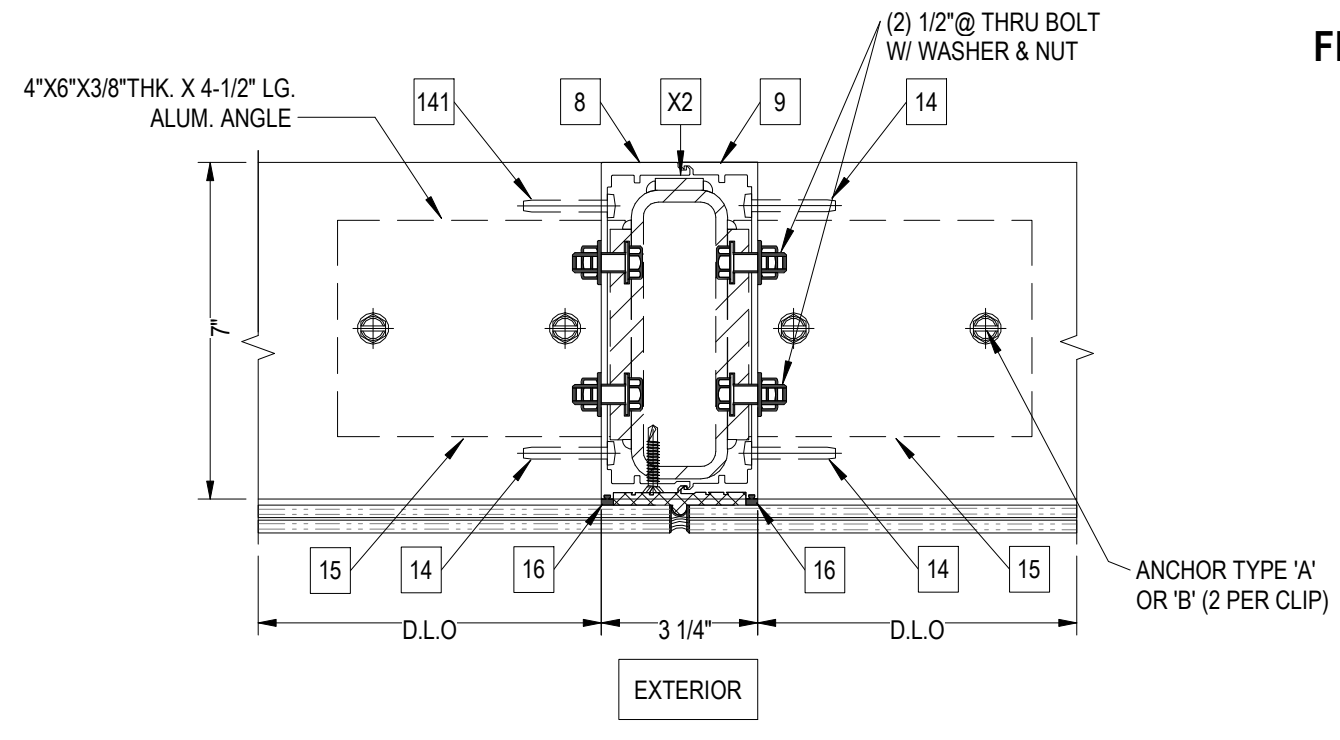
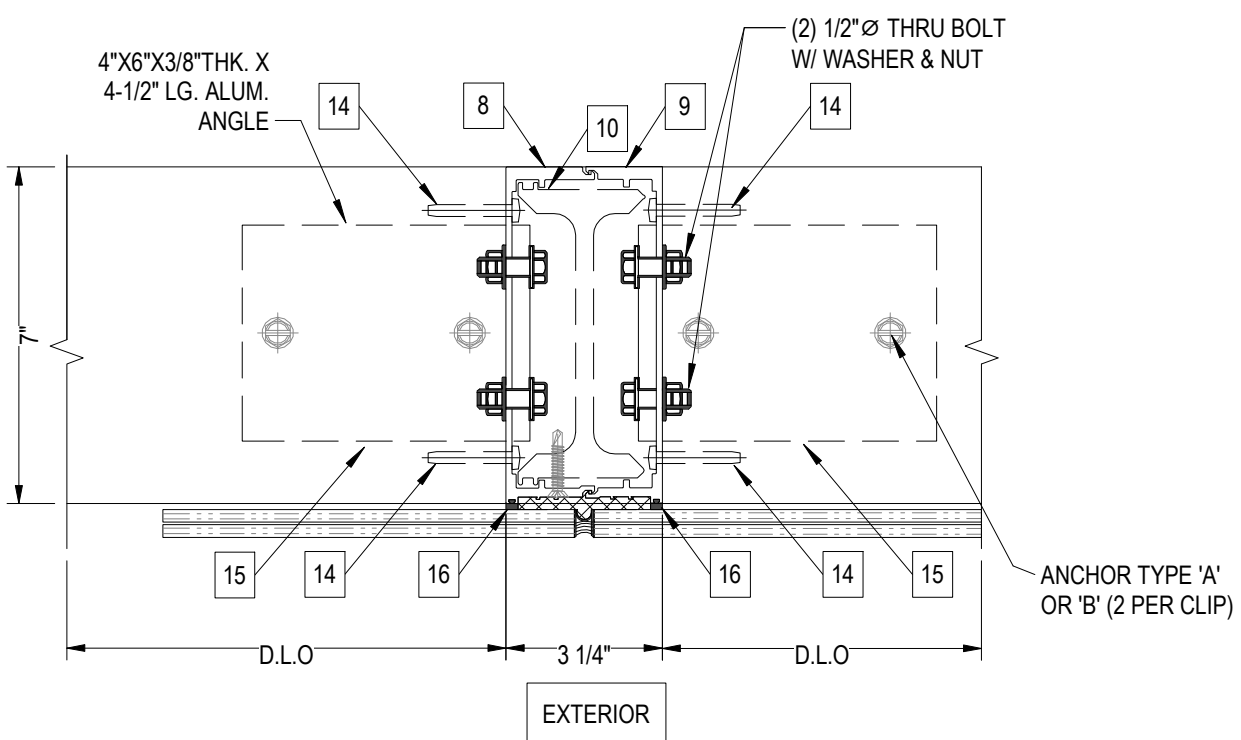
Eng: JAVAD AHMAD
 CIVIL
 FLA PE #70592
 C.A.N. 34254

FL#39158



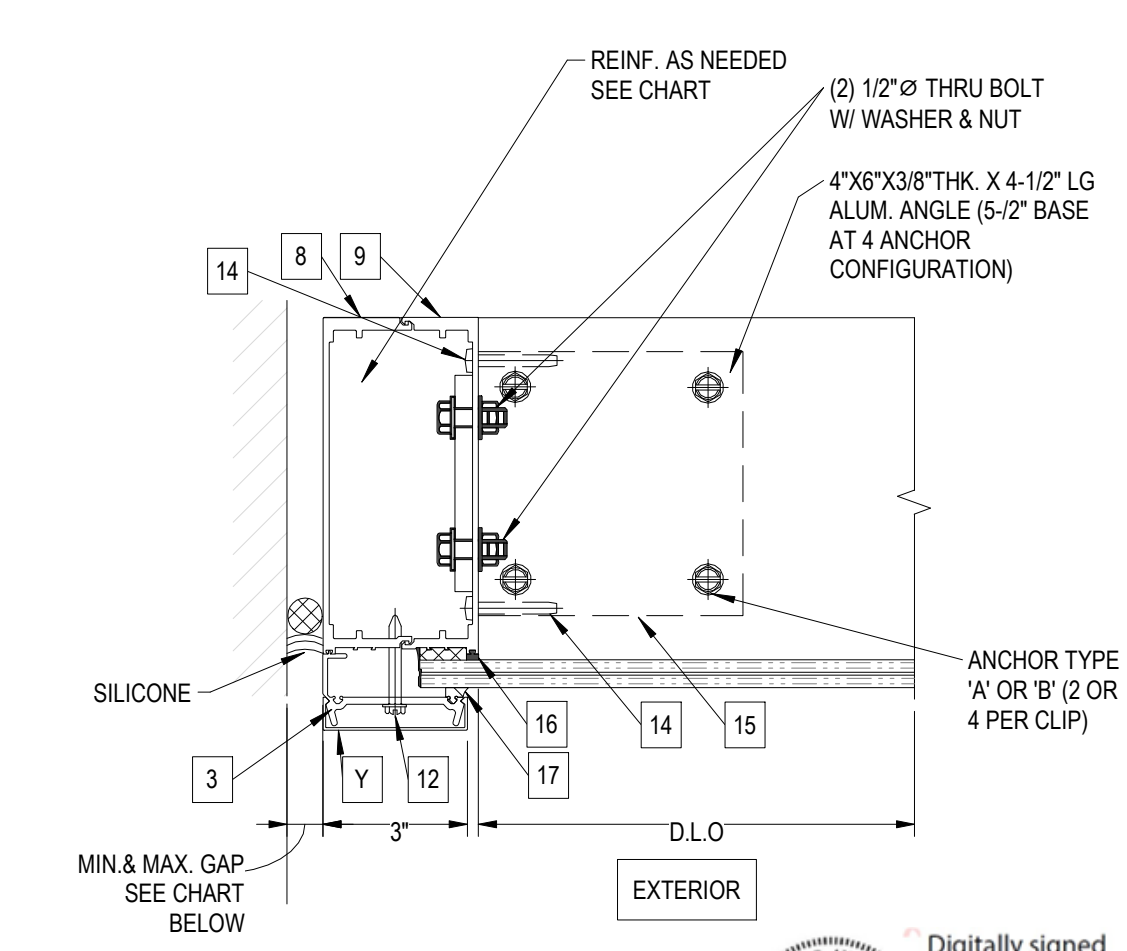
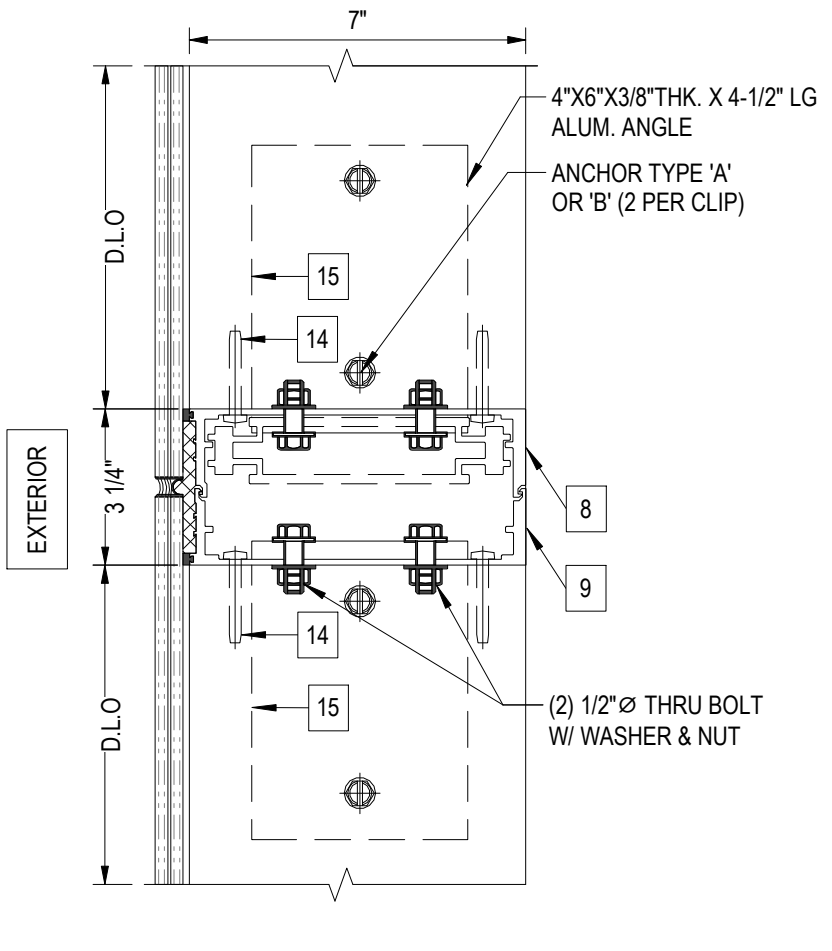
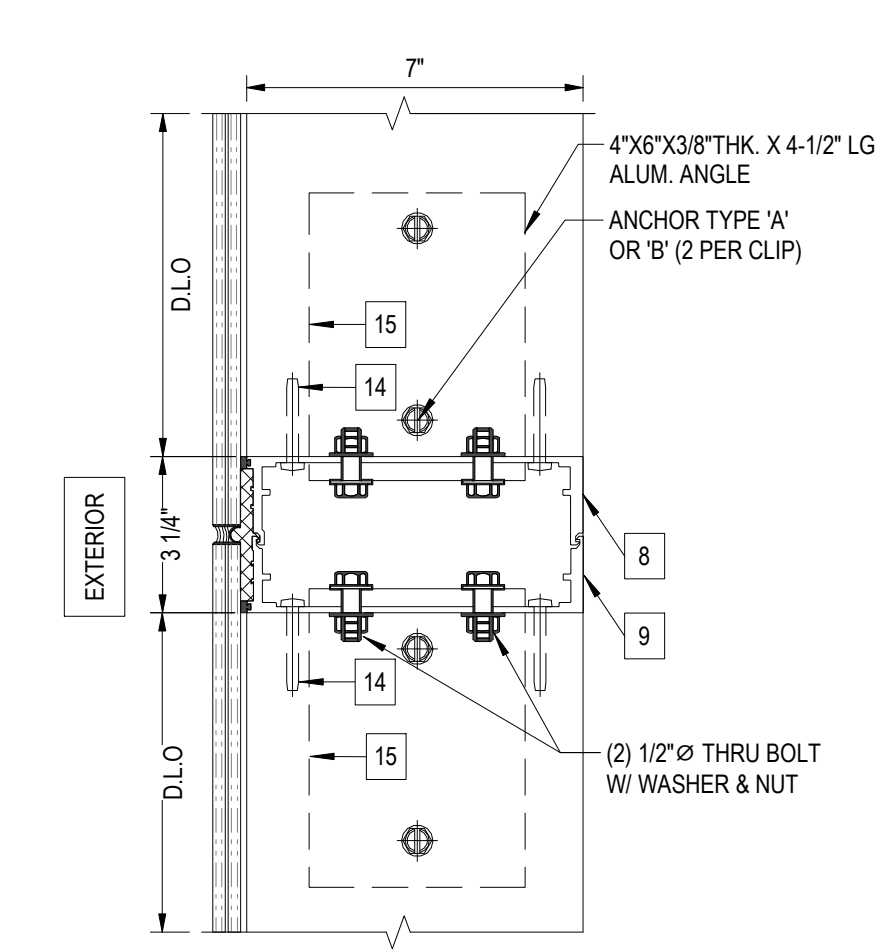
JAVAD AHMAD PE, inc
 8800 NW 23rd St, Miami FL 33172
 Ph: (305) 424-8001
 support@ja-pe.com

CONSULTING • STRUCTURAL DESIGN • FACADES • BUILDING ENVELOPE • SYSTEM DESIGN • PRODUCT APPROVALS



1
 109
 INTERMEDIATE VERTICAL MULLION 'M4' WITH ALUMINUM REINFORCEMENT
 N.T.S.

2
 109
 INTERMEDIATE VERTICAL MULLION 'M5' WITH STEEL REINFORCEMENT
 N.T.S.



3
 109
 INTERMEDIATE HORIZONTAL MULLION 'M1' WITHOUT REINFORCEMENT
 N.T.S.

4
 109
 INTERMEDIATE HORIZONTAL MULLION 'M2' WITH ALUMINUM REINFORCEMENT
 N.T.S.

5
 109
 JAMB DETAIL
 N.T.S.

OGT-700 ALUMINUM WINDOW WALL SYSTEM
 (LARGE AND SMALL MISSILE IMPACT RATED)

OGT WINDOW PRODUCTS, LLC.
 6910 NW 42ND STREET
 DORAL, FL 33166
 TEL. (305) 594-3999
 FAX. (305) 392-9555

SA	BS	REVISION	DESCRIPTION
drawn by:	check by:		
JA-1692-23	12-06-2023	BY	
date:		DATE	
		No	

Eng: JAVAD AHMAD CIVIL
 FLA PE #70592
 C.A.N. 34254

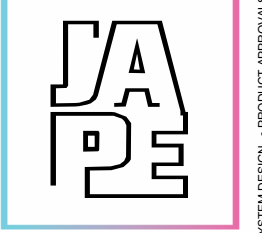


Digitally signed by Javad Ahmad
 Date: 2023.12.22 11:08:15 -05'00'

FL#39158

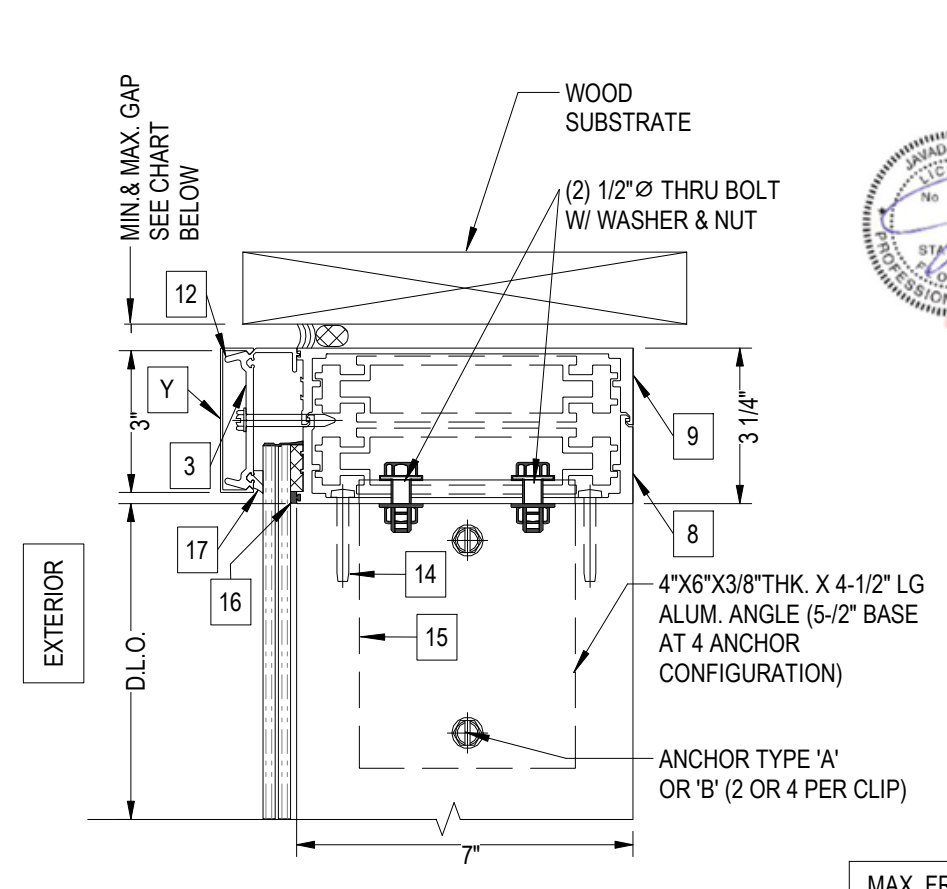
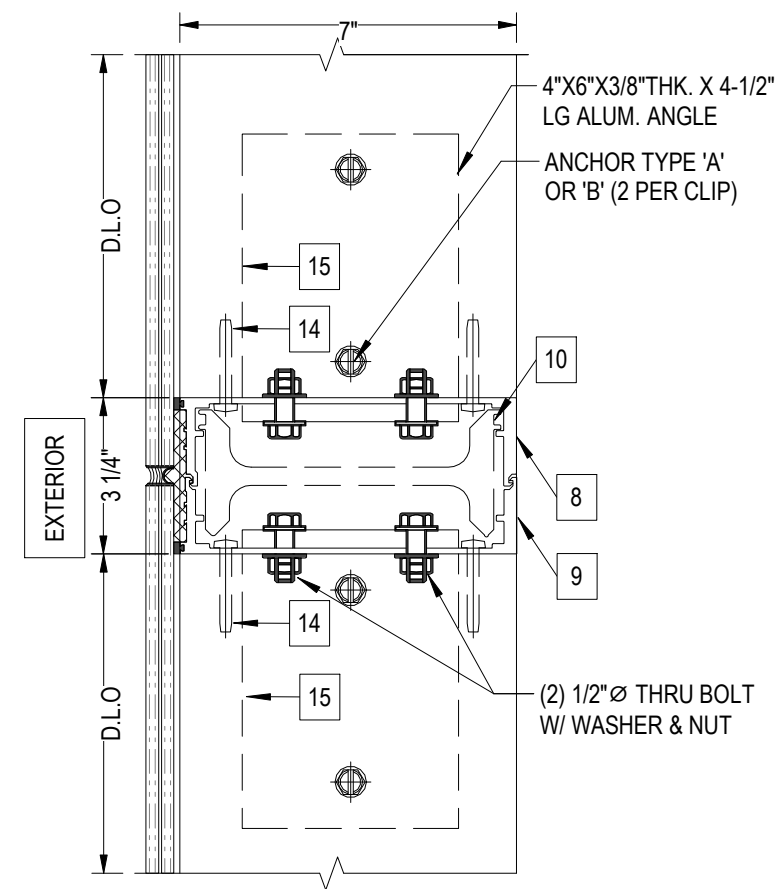
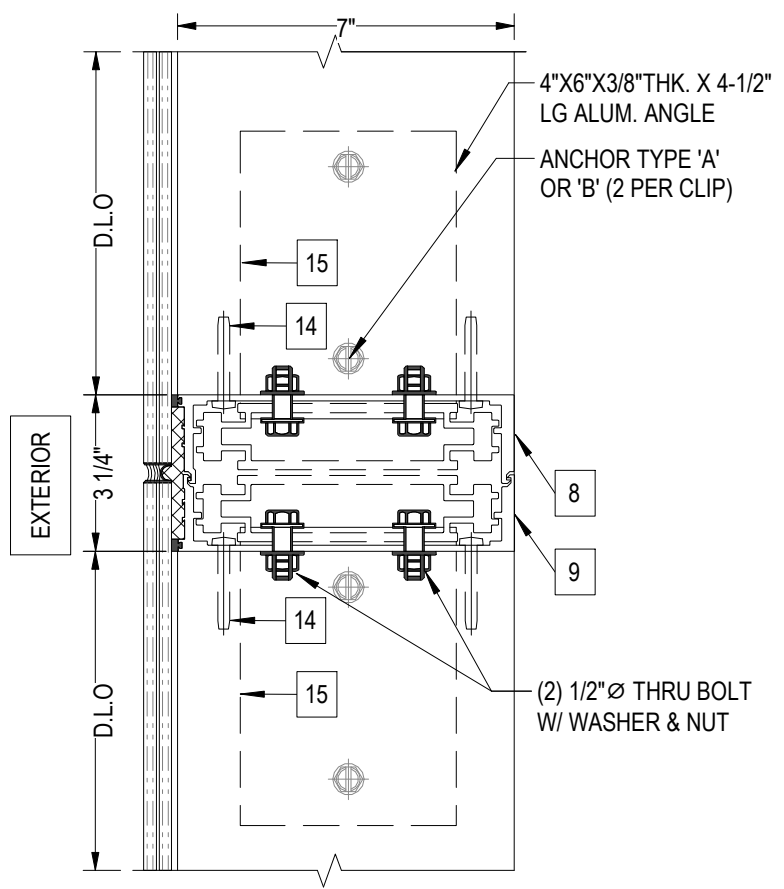


Digitally signed by Javad Ahmad
Date: 2023.12.22 11:08:15 -05'00'



JAVAD AHMAD PE, inc
8800 NW 23rd St, Miami FL 33172
Ph: (305) 424-8001
support@ja-pe.com

CONSULTING • STRUCTURAL DESIGN • FACADES • BUILDING ENVELOPE • SYSTEM DESIGN • PRODUCT APPROVALS

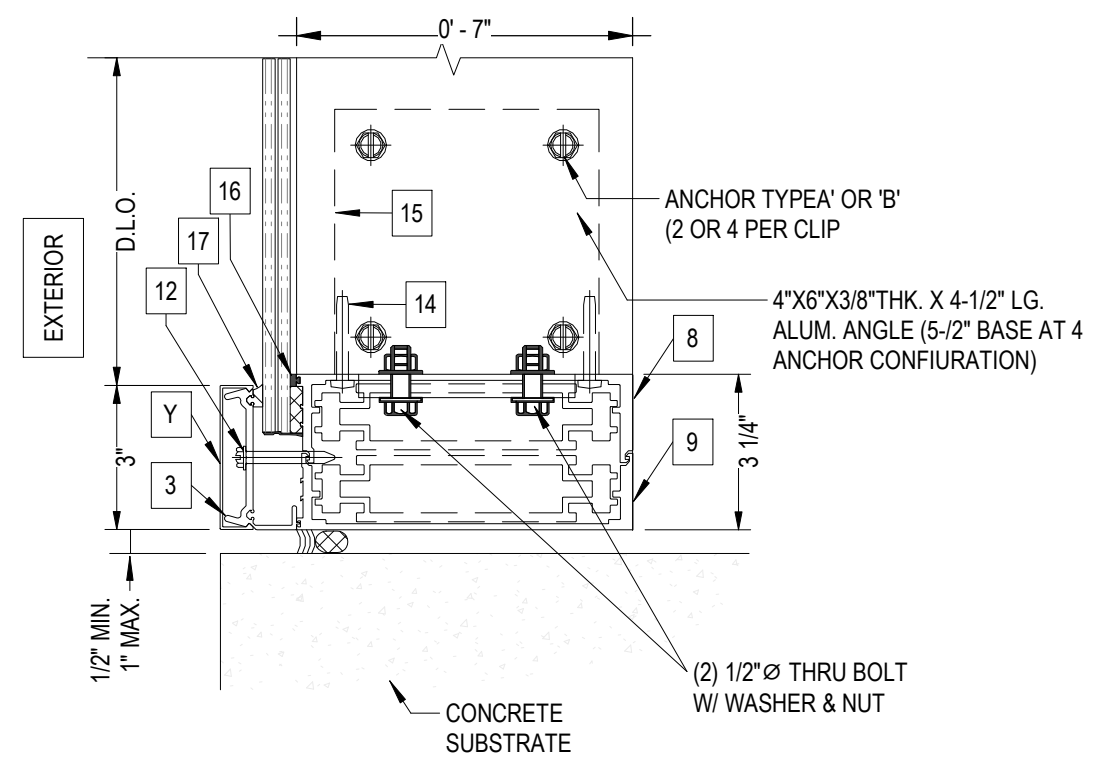
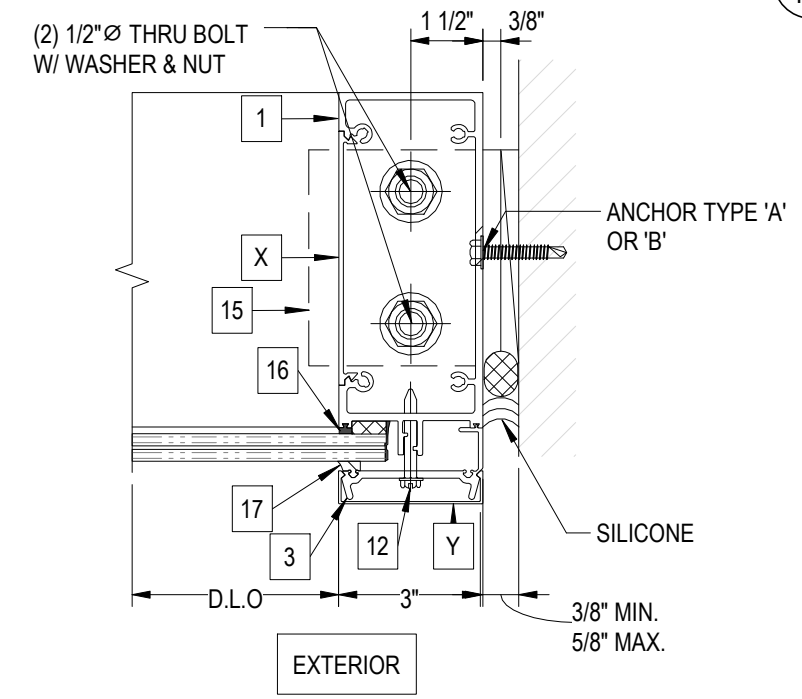
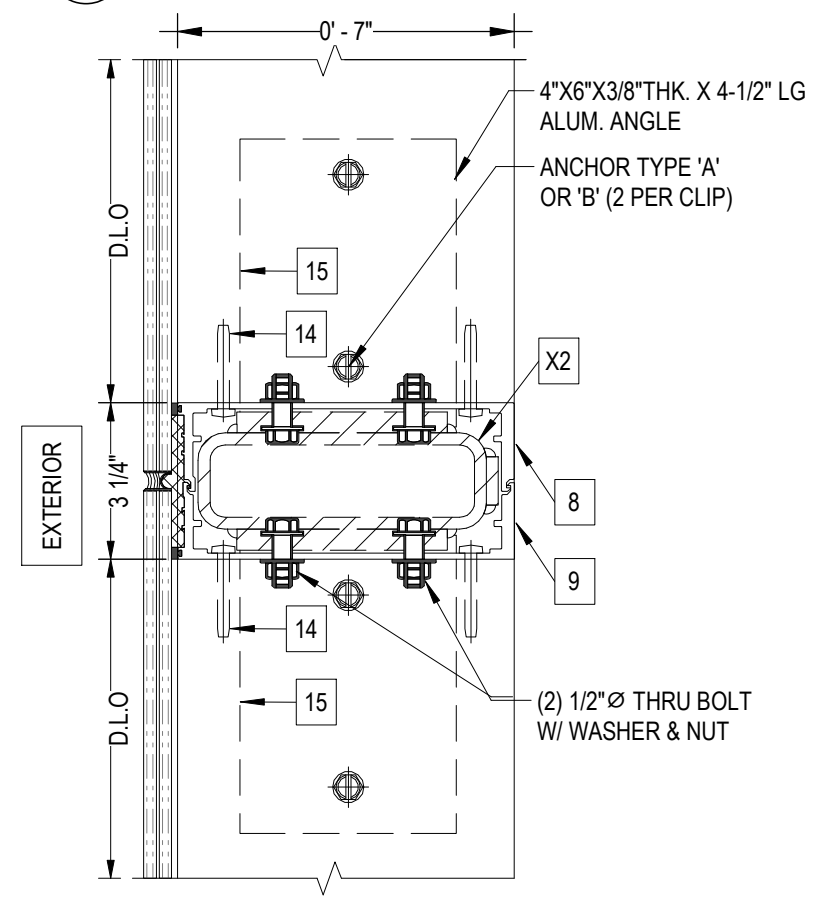


MAX. FRAME HEIGHT	MIN. GAP	MAX. GAP
168"	3/4"	1"
144"	5/8"	1"
120"	1/2"	1"
96"	1/2"	1"

1
110
INTERMEDIATE HORIZONTAL MULLION 'M3' WITH ALUMINUM REINFORCEMENT
N.T.S.

2
110
INTERMEDIATE HORIZONTAL MULLION 'M3' WITH ALUMINUM REINFORCEMENT
N.T.S.

3
110
HEADER DETAIL
N.T.S.



5
110
INTERMEDIATE HORIZONTAL MULLION 'M5' WITH STEEL REINFORCEMENT
N.T.S.

6
110
JAMB DETAIL
N.T.S.

4
110
SILL DETAIL
N.T.S.

OGT-700 ALUMINUM WINDOW WALL SYSTEM (LARGE AND SMALL MISSILE IMPACT RATED)

OGT WINDOW PRODUCTS, LLC.
6910 NW 42ND STREET
DORAL, FL 33166
TEL. (305) 594-3999
FAX. (305) 392-9555

drawing no.	date:	REVISION	
		DATE	DESCRIPTION
JA-1692-23	12-06-2023		

Eng: JAVAD AHMAD CIVIL
FLA PE #70592
C.A.N. 34254

BILL OF MATERIALS

ITEM NO.	PART NUMBER	QUANTITY	DESCRIPTION /REMARKS	MATERIAL	SECTIONAL VIEW
1	OGT-701	AS REQD,	FRAME HEAD/SILL/ INTERMEDIATE	6063-T6	
3	OGT-3	AS REQD.	PERIMETER GLAZING RETAINER (LAM. GLASS)	6063-T6	
6	OGT-706	AS REQD.	SETTING RETAINER (INSUL. LAM. GLASS) 6" LONG	6063-T6	
7	OGT-9		PERIMETER GLAZING RETAINER (INSUL. LAM. GLASS)	6063-T6	
8	OGT-703	AS REQD.	MALE MULLION	6063-T6	
9	OGT-702	AS REQD,	FEMALE MULLION	6063-T6	
10	OGT-709	AS REQD.	MULLION REINFORCING - I-BEAM	6063-T6	

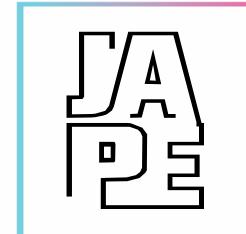
NOTE:

- ALL DIMENSIONS SHOWN ON THIS SHEET ARE IN INCHES.
- REFER TO PARTS LIST ON SHEET 111 FOR DETAILS

FL#39158

BILL OF MATERIALS

ITEM NO.	PART NUMBER	QUANTITY	DESCRIPTION	MATERIAL	MANUFACTURER / REMARKS / SECTIONAL VIEW
12	1/4" DIA.	AS REQD.	GLAZING RETAINER SCREWS-		WASHER HEAD TEKS, AT 12 O.C.
14	1/4X2"	4/CORNER	FRAME ASSEMBLY SCREWS	ST. STEEL	H H TE KS
15	-	2/MULLION	3-1/2X6X3/8" ALUM ANGLE, 4-1/2" LONG	6061-T6	(1) AT EACH SIDE OF MULLION
16	WE-1641	-	INT. GLAZING GASKET	PVC	UNIVERSAL RUBBER CO.
17	2338	-	EXT. GLAZING GASKET	PVC	UNIVERSAL RUBBER CO.
20	GE-SCS2003/ DOW 995	AS REQD,	GLAZING COMPOUND	SILICONE	GENERAL ELECTRIC / DOW CORNING
25A	-	AS REQD.	SETTING BLOCK, 1-1/2") <6"X1/4" (INSUL. LAM. GLASS)	NEOPRENE	DUROMETER 80+ 1-5 SHORE A
26A	-	AS REQD.	SETTING BLOCK, 1-1/2"X4"X1/4" (LAM. GLASS)	NEOPRENE	DUROMETER 80 +/-5 SHORE A
XI	-	-	ALUMINUM REINFORCING	6063-T6	
X2	-	-	STEEL REINFORCING	STEEL	
X	-	-	SNAP-IN COVER	6063-T6	
Y	-	-	GLAZING RETAINER COVER	6063-T6	



JAVAD AHMAD PE, inc
 8800 NW 23rd St, Miami FL 33172
 Ph: (305) 424-8001
 support@ja-pe.com

CONSULTING • STRUCTURAL DESIGN • FACADES • BUILDING ENVELOPE • SYSTEM DESIGN • PRODUCT APPROVALS

OGT-700 ALUMINUM WINDOW WALL SYSTEM (LARGE AND SMALL MISSILE IMPACT RATED)
OGT WINDOW PRODUCTS, LLC.
 6910 NW 42ND STREET DORAL, FL 33166
 TEL. (305) 594-3999
 FAX. (305) 392-9555

drawing no. JA-1692-23	drawn by: SA	checked by: BS	REVISION	DESCRIPTION
date: 12-06-2023				DATE
			No.	

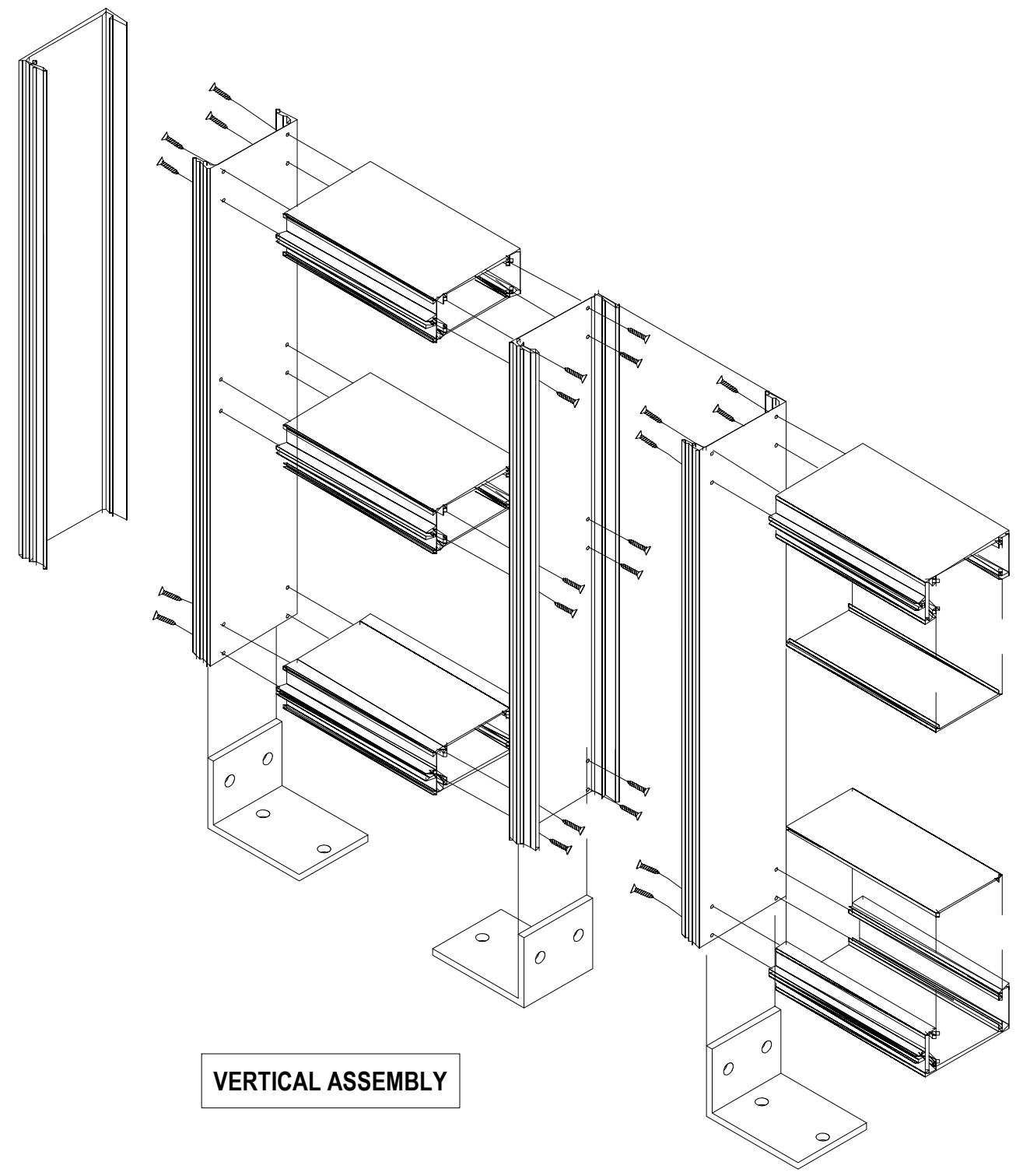
Digitally signed by Javad Ahmad
 Date: 2023.12.22 11:08:15 -05'00'

Eng: JAVAD AHMAD CIVIL
 FLA PE #70592
 C.A.N. 34254

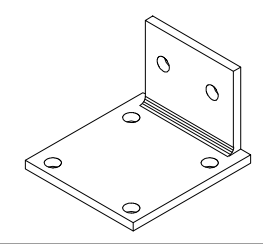


JAVAD AHMAD PE, inc
 8800 NW 23rd St, Miami FL
 33172
 Ph: (305) 424-8001
 support@ja-pe.com

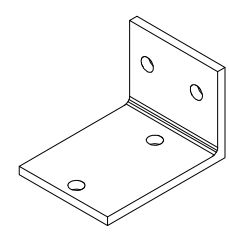
CONSULTING • STRUCTURAL DESIGN • FACADES • BUILDING ENVELOPE • SYSTEM DESIGN • PRODUCT APPROVALS



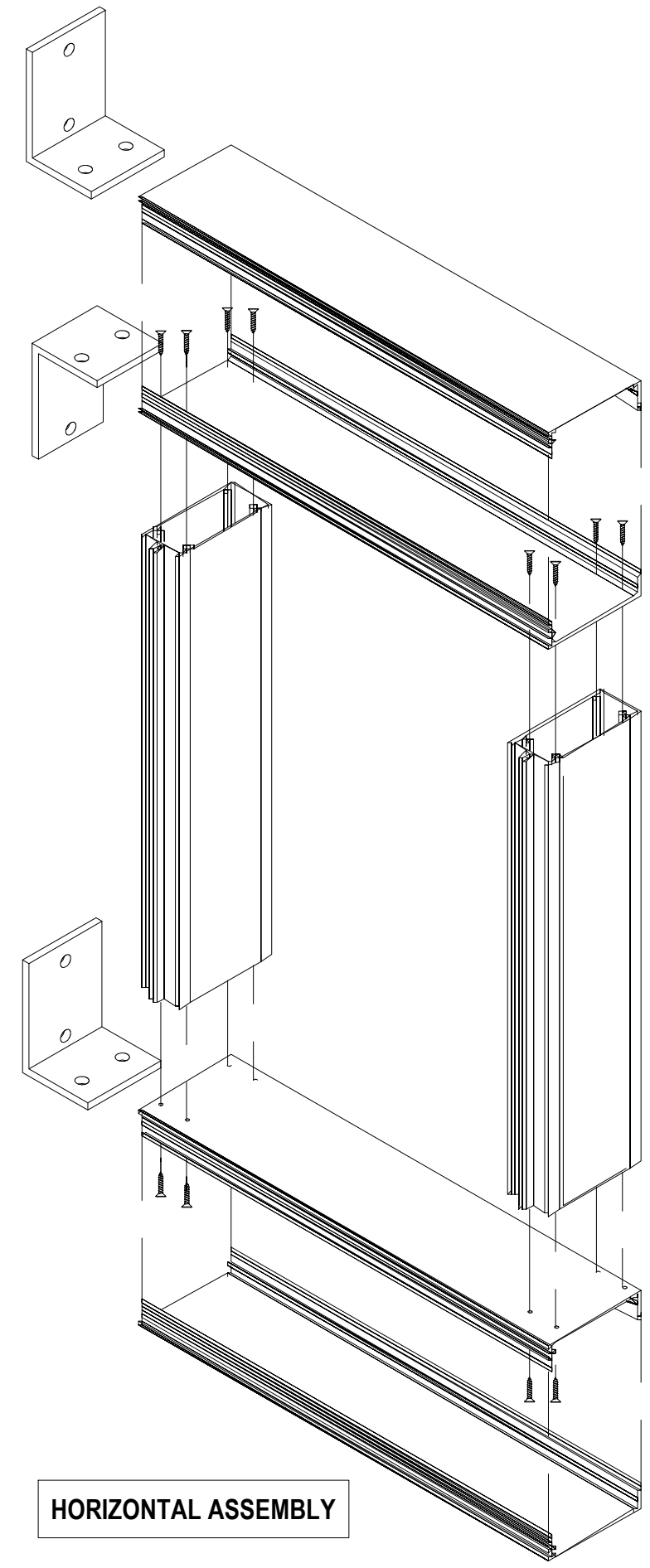
VERTICAL ASSEMBLY



(4) ANCHOR F-CLIP



TYPICAL CLIP & (2) ANCHOR F-CLIP



HORIZONTAL ASSEMBLY

OGT-700 ALUMINUM WINDOW
 WALL SYSTEM
 (LARGE AND SMALL MISSILE IMPACT RATED)

OGT WINDOW PRODUCTS, LLC.
 6910 NW 42ND STREET
 DORAL, FL 33166
 TEL. (305) 594-3999
 FAX. (305) 392-9555

drawing no. JA-1692-23	drawn by: SA	REVISION	DATE	BY	DESCRIPTION
	date: 12-06-2023				
		No.			

Eng: JAVAD AHMAD
 CIVIL
 FLA PE #70592
 C.A.N. 34254



Digitally signed
 by Javad
 Ahmad
 Date:
 2023.12.22
 11:08:15 -05'00'