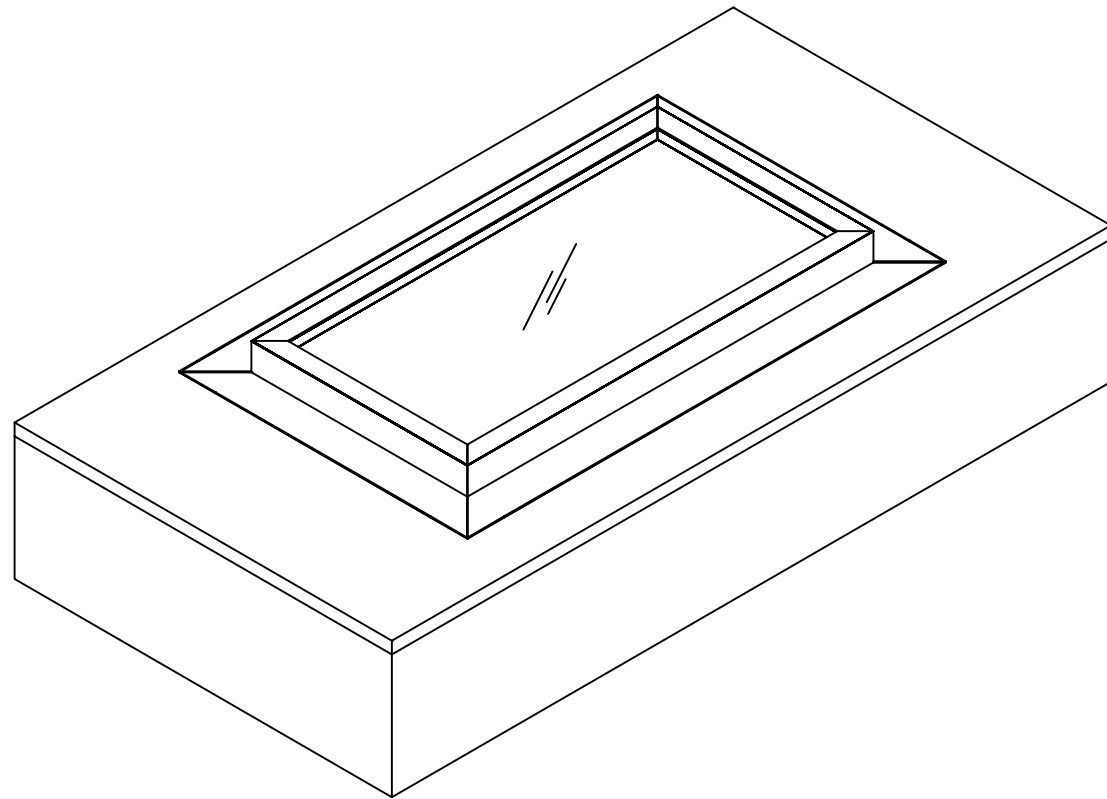


C:\Users\thayer\Engineering Express\Production - Documents\Projects\21-40981 ISFG4 Curb Mounted Glass Skylight Non Impact and Impact\WorkDrawings & CAD\21-40981 Skylight SFG (2020 FSA).dwg

06/15/2021 - 11:47am thayer

KENNEDY SKYLIGHTS

MODEL "SFG" CURB MOUNTED SELF-FLASHING GLASS SKYLIGHT IMPACT RATED FOR WIND ZONE 4, MISSILE LEVEL D & NON IMPACT RATED (NON-HVHZ)



GENERAL NOTES:

- THIS SYSTEM AND GLASS TYPES DESCRIBED HEREIN COMPLY AND HAVE BEEN DESIGNED AND TESTED IN ACCORDANCE WITH THE FLORIDA BUILDING CODE SEVENTH EDITION (2020) PER ASTM E330, ASTM E331, ASTM E283, ASTM E1886 & ASTM E1996 AAMA/WDMA 1600-00/1.S.2
- SITE-SPECIFIC REQUIRED DESIGN PRESSURES SHALL BE CALCULATED BY A LICENSED PROFESSIONAL ENGINEER FOR USE WITH THIS DOCUMENT PER CURRENT ADOPTED EDITION OF ASCE 7 AND WITH LOCAL CODE REQUIREMENTS.
- THIS SYSTEM IS IMPACT RATED FOR WIND ZONE IV, NON-HVHZ.
- DESIGN PRESSURES NOTED HEREIN ARE BASED ON MAXIMUM TESTED PRESSURES DIVIDED BY A 1.5 SAFETY FACTOR.
- NO 33-1/3% INCREASE IN ALLOWABLE STRESS HAS BEEN USED IN THE DESIGN OF THIS SYSTEM. WIND LOAD DURATION FACTOR Cd= 1.6 HAS BEEN USED FOR WOOD ANCHOR DESIGN.
- THE ARCHITECT/ENGINEER OF RECORD FOR THE PROJECT SUPERSTRUCTURE WITH WHICH THIS DESIGN IS USED SHALL BE RESPONSIBLE FOR THE INTEGRITY OF ALL SUPPORTING SURFACES TO THIS DESIGN WHICH SHALL BE COORDINATED BY THE PERMITTING CONTRACTOR. WOOD BUCKS (BY OTHERS) SHALL BE ANCHORED PROPERLY TO TRANSFER LOADS TO THE EXISTING STRUCTURE.
- THE SYSTEM DETAILED HEREIN IS GENERIC AND DOES NOT PROVIDE INFORMATION FOR A SPECIFIC SITE. FOR SITE CONDITIONS DIFFERENT FROM THE CONDITIONS DETAILED HEREIN, A LICENSED ENGINEER OR REGISTERED ARCHITECT SHALL PREPARE SITE SPECIFIC DOCUMENTS FOR USE IN CONJUNCTION WITH THIS DOCUMENT.
- THE CONTRACTOR IS RESPONSIBLE TO INSULATE ALL MEMBERS FROM DISSIMILAR MATERIALS TO PREVENT ELECTROLYSIS.
- FASTENERS SHALL BE CADMIUM-PLATED OR OTHERWISE CORROSION-RESISTANT MATERIAL AND SHALL COMPLY WITH "SPECIFICATIONS FOR ALUMINUM STRUCTURES" SECTION J.3.7.2 BY THE ALUMINUM ASSOCIATION, INC., & ANY APPLICABLE FEDERAL, STATE, AND/OR LOCAL CODES
- ENGINEER SEAL AFFIXED HERE TO VALIDATES STRUCTURAL DESIGN AS SHOWN ONLY. USE OF THIS SPECIFICATION BY CONTRACTOR, et. al. INDEMNIFIES & SAVES HARMLESS THIS ENGINEER FOR ALL COST & DAMAGES INCLUDING LEGAL FEES & APPELLATE FEES RESULTING FROM MATERIAL FABRICATION, SYSTEM ERECTION, & CONSTRUCTION PRACTICES BEYOND THAT WHICH IS CALLED FOR BY LOCAL, STATE, & FEDERAL CODES & FROM DEVIATIONS OF THIS PLAN.
- EXCEPT AS EXPRESSLY PROVIDED HEREIN, NO ADDITIONAL CERTIFICATIONS OR AFFIRMATIONS ARE INTENDED.
- PRESSURE VALUES ON THIS APPROVAL ARE (ASD) ALLOWABLE DESIGN PRESSURES.
- ALTERATIONS, ADDITIONS, OR OTHER MARKINGS TO THIS DOCUMENT ARE NOT PERMITTED AND INVALIDATE THIS CERTIFICATION.
- SAFEGUARDS MUST BE OBSERVED (NOT IN THIS CERTIFICATION)
- PRODUCT SHALL BE PERMANENTLY LABELED WITH A MINIMUM OF ONE LABEL PER SYSTEM CONTAINING THE FOLLOWING:

KENNEDY SKYLIGHTS
5294 TOWER WAY
SANFORD, FL 32773

SHEET INDEX	
# SHEET	DESCRIPTION
01	COVER SHEET / GENERAL NOTES
02	ELEVATIONS
03-04	GLAZING DETAILS & FRAME LOADING TABLES
05	ANCHORING SCHEDULE & LAYOUT
06	INSTALLATION SECTION WITH SCREWS
07	INSTALLATION SECTION WITH NAILS
08-09	BILL OF MATERIALS & COMPONENTS
9	TOTAL

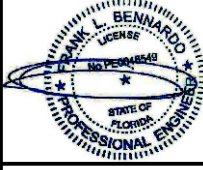
DESIGN PRESSURE RATING (PSF)	
IMPACT RATING	WIND ZONE 4 - MISSILE LEVEL D +52.5 PSF, -52.5 PSF
NON-IMPACT RATING	+60.0 PSF, -60.0 PSF

VISIT ECALC.IO/40981 SCAN HERE:

FOR HELPFUL RESOURCES, SITE SPECIFIC JOB ORDERING & MORE INFORMATION ABOUT THIS PRODUCT & RELATED SERVICES



FRANK BENNARDO, P.E.
PE# 0046549 CA. 9885



06/15/2021

FL# 39163.1

ENGINEERING EXPRESS

CORPORATE OFFICE:
160 SW 12th AVE, SUITE 106
DEERFIELD BEACH, FL 33442
(954) 354-0660 | (866) 396-9999
TEAM@ENGINEERINGEXPRESS.COM
ENGINEERINGEXPRESS.COM

KENNEDY SKYLIGHTS

5294 TOWER WAY
SANFORD, FL 32773
PH: (800) 280-2545

MODEL "SFG4" CURB MOUNTED SELF-FLASHING
GLASS SKYLIGHT
IMPACT & NON IMPACT

REMARKS	DRWN	CHKD	DATE
FBC 2020 UPDATE	TAE	AJP	06/01/21

COPYRIGHT ENGINEERING EXPRESS®

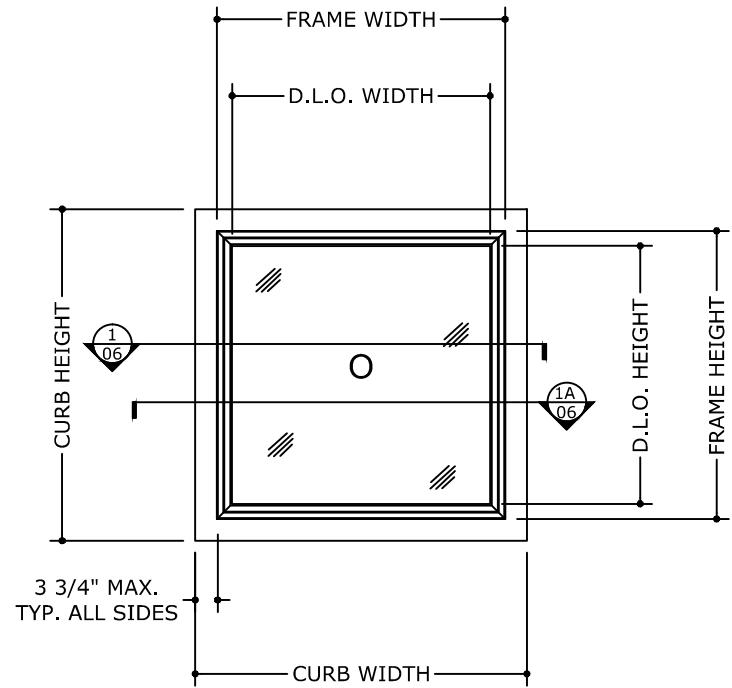
21-40981

SCALE: NTS UNLESS NOTED

01

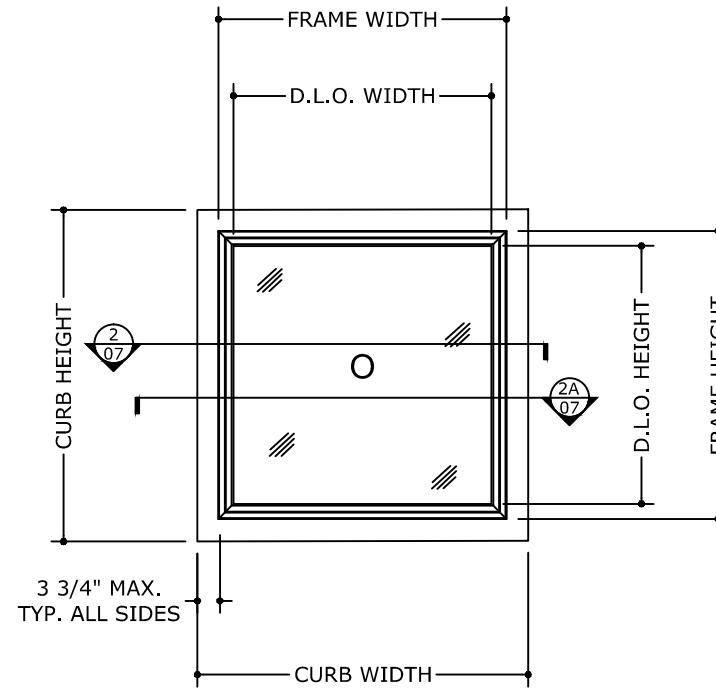
C:\Users\thayer\Engineering\Express\Production - Documents\Projects\21-40981 ISFG4 Curb Mounted Glass Skylight Non Impact and Impact\WorkDrawings & CAD\21-40981 Skylight SFG (2020 FSA).dwg

ELEVATION



MODEL "SFG" CURB MOUNTED SKYLIGHT

INSTALLED INTO VARIABLE
SUBSTRATE ROOF ASSEMBLIES
WITH NAILS
EXTERIOR VIEW



MODEL "SFG" CURB MOUNTED SKYLIGHT

INSTALLED INTO VARIABLE
SUBSTRATE ROOF ASSEMBLIES
WITH SCREWS
EXTERIOR VIEW

WATER INFILTRATION NOTE:

WATER RESISTANCE PER ASTM E331= 12 P.S.F

MAXIMUM ALLOWABLE GLASS DLO:

MAX GLASS D.L.O. AREA = 12.84 SQ. FT.

MAXIMUM ALLOWABLE DESIGN PRESSURES:

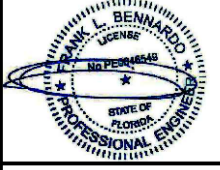
IMPACT: +52.5 PSF, -52.5 PSF
NON-IMPACT: +60 PSF, -60 PSF

NOTE:
D.L.O WIDTH = FRAME WIDTH - 4.4" (+/-1/16")
D.L.O HEIGHT = FRAME HEIGHT - 4.4" (+/-1/16")

NOTE: REFER TO SYSTEM INSTALLATION
MANUAL FOR FABRICATION AND ASSEMBLY
INSTRUCTIONS.

NOTE: ALL WATERPROOFING REQUIREMENTS
ARE NOT INCLUDED IN THIS CERTIFICATION.

FRANK BENNARDO, P.E.
PE# 0046549 CA, 9885



06/15/2021

FL# 39163.1

ENGINEERING EXPRESS
CORPORATE OFFICE:
160 SW 12th AVE, SUITE 106
DEERFIELD BEACH, FL 33442
(954) 354-0660 | (866) 396-9999
TEAM@ENGINEERINGEXPRESS.COM
ENGINEERINGEXPRESS.COM

KENNEDY SKYLIGHTS

5294 TOWER WAY
SANFORD, FL 32773
PH: (800) 280-2545

MODEL "SFG4" CURB MOUNTED SELF-FLASHING
GLASS SKYLIGHT
IMPACT & NON IMPACT

REMARKS	DRWN	CHKD	DATE
FBC 2020 UPDATE	TAE	AJP	06/01/21

COPYRIGHT ENGINEERING EXPRESS®

21-40981

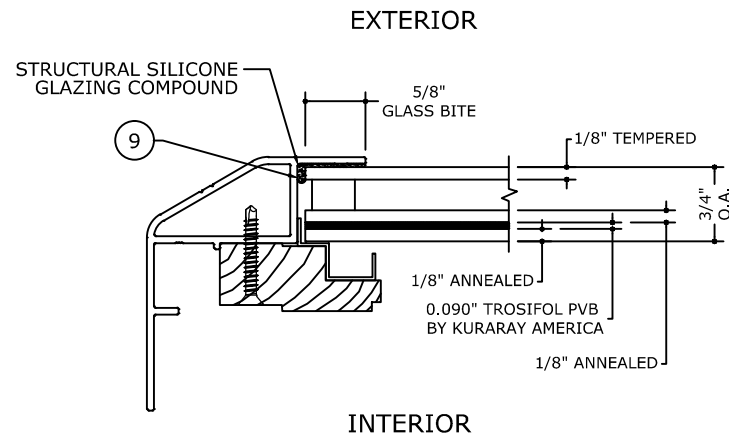
SCALE: NTS UNLESS NOTED

02

GLASS TYPES

NOTE: GLASS SIZE = DLO + 1-1/4"

NOTE:
 D.L.O WIDTH = FRAME WIDTH - 4.4" (+/-1/16")
 D.L.O HEIGHT = FRAME HEIGHT - 4.4" (+/-1/16")

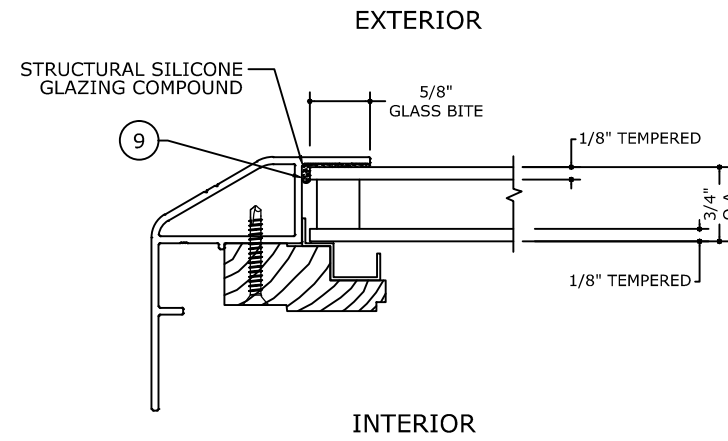


GLASS TYPE \diamond G1

GLAZING DETAIL

N.T.S.

GLASS RATING:
 LARGE MISSILE IMPACT
 MISSILE LEVEL D



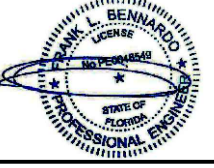
GLASS TYPE \diamond G2

GLAZING DETAIL

N.T.S.

GLASS RATING:
 NON - IMPACT

NOTE:
 GLAZING TYPE COMPLIES WITH
 ASTM E1300 REQUIREMENTS .



FL# 39163.1

ENGINEERING EXPRESS
 CORPORATE OFFICE:
 160 SW 12th AVE, SUITE 106
 DEERFIELD BEACH, FL 33442
 (954) 354-0660 | (866) 396-9999
 TEAM@ENGINEERINGEXPRESS.COM
 ENGINEERINGEXPRESS.COM

KENNEDY SKYLIGHTS

5294 TOWER WAY
 SANFORD, FL 32773
 PH: (800) 280-2545

MODEL "SFG4" CURB MOUNTED SELF-FLASHING
 GLASS SKYLIGHT
 IMPACT & NON IMPACT

REMARKS	DRWN	CHKD	DATE
FBC 2020 UPDATE	TAE	AJP	06/01/21

COPYRIGHT ENGINEERING EXPRESS®

21-40981

SCALE: NTS UNLESS NOTED

03

C:\Users\thayer\Engineering\Express\Production - Documents\Projects\21-40981 ISFG4 Cub Mounted Glass Skylight Non Impact and Impact\WorkDrawings & CAD\21-40981 Skylight SFG (2020 FSA).dwg

FRAME LOADING TABLES

GLASS TYPES		G1	
		ALLOWABLE PRESSURE	
FRAME HEIGHT (in)	FRAME WIDTH (in)	(+) P.S.F.	(-) P.S.F.
24	24	52.5	52.5
	30	52.5	52.5
	36	52.5	52.5
	42	52.5	52.5
	48	52.5	52.5
	54	52.5	52.5
	60	52.5	52.5
	66	52.5	52.5
	72	52.5	52.5
	78	52.5	52.5
84	52.5	52.5	
30	24	52.5	52.5
	30	52.5	52.5
	36	52.5	52.5
	42	52.5	52.5
	48	52.5	52.5
	54	52.5	52.5
	60	52.5	52.5
	66	52.5	52.5
72	52.5	52.5	

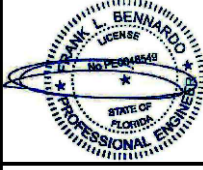
GLASS TYPES		G1	
		ALLOWABLE PRESSURE	
FRAME HEIGHT (in)	FRAME WIDTH (in)	(+) P.S.F.	(-) P.S.F.
36	24	52.5	52.5
	30	52.5	52.5
	36	52.5	52.5
	42	52.5	52.5
	48	52.5	52.5
	54	52.5	52.5
	60	52.5	52.5
42	24	52.5	52.5
	30	52.5	52.5
	36	52.5	52.5
	42	52.5	52.5
	48	52.5	52.5
	54	52.5	52.5
48	24	52.5	52.5
	30	52.5	52.5
	36	52.5	52.5
	42	52.5	52.5
	48	52.5	52.5

GLASS TYPES		G2	
		ALLOWABLE PRESSURE	
FRAME HEIGHT (in)	FRAME WIDTH (in)	(+) P.S.F.	(-) P.S.F.
24	24	60	60
	30	60	60
	36	60	60
	42	60	60
	48	60	60
	54	60	60
	60	60	60
	66	60	60
	72	60	60
	78	60	60
84	60	60	
30	24	60	60
	30	60	60
	36	60	60
	42	60	60
	48	60	60
	54	60	60
	60	60	60
66	60	60	
72	60	60	

GLASS TYPES		G2	
		ALLOWABLE PRESSURE	
FRAME HEIGHT (in)	FRAME WIDTH (in)	(+) P.S.F.	(-) P.S.F.
36	24	60	60
	30	60	60
	36	60	60
	42	60	60
	48	60	60
	54	60	60
	60	60	60
42	24	60	60
	30	60	60
	36	60	60
	42	60	60
	48	60	60
	54	60	60
48	24	60	60
	30	60	60
	36	60	60
	42	60	60
	48	60	60

NOTE: D.L.O. WIDTH AND HEIGHT DIMENSIONS CAN BE REVERSED.

FRANK BENNARDO, P.E.
PE# 0046549 CA. 9885



06/15/2021

FL# 39163.1

ENGINEERING EXPRESS
CORPORATE OFFICE:
160 SW 12th AVE, SUITE 106
DEERFIELD BEACH, FL 33442
(954) 354-0660 | (866) 396-9999
TEAM@ENGINEERINGEXPRESS.COM
ENGINEERINGEXPRESS.COM

KENNEDY SKYLIGHTS
5294 TOWER WAY
SANFORD, FL 32773
PH: (800) 280-2545
MODEL "SFG4" CURB MOUNTED SELF-FLASHING
GLASS SKYLIGHT
IMPACT & NON IMPACT

REMARKS	DRWN	CHKD	DATE
FBC 2020 UPDATE	TAE	AJP	06/01/21

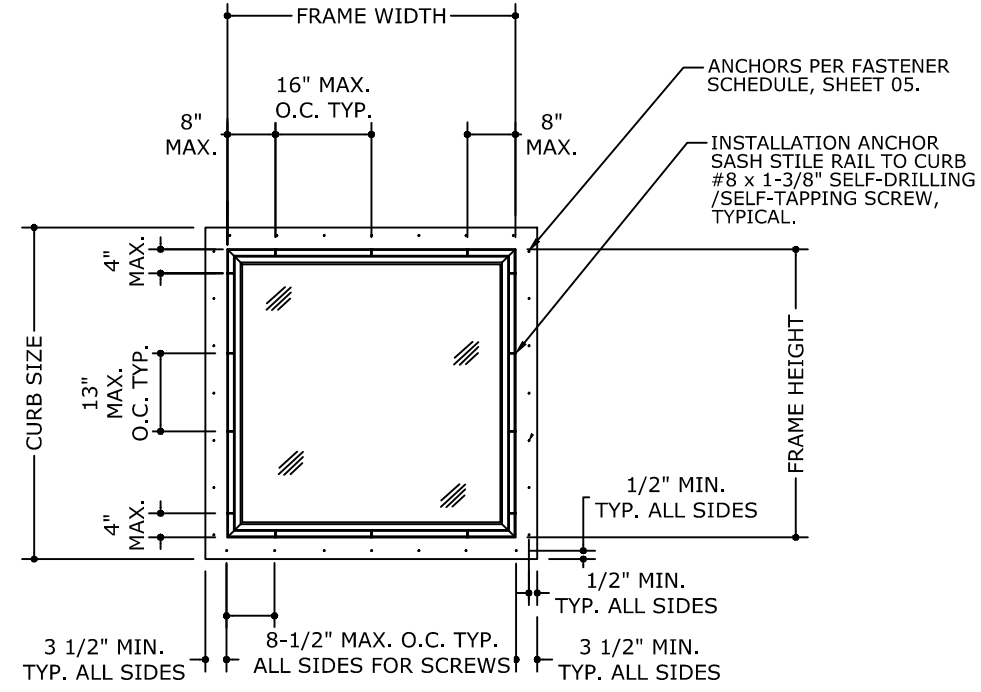
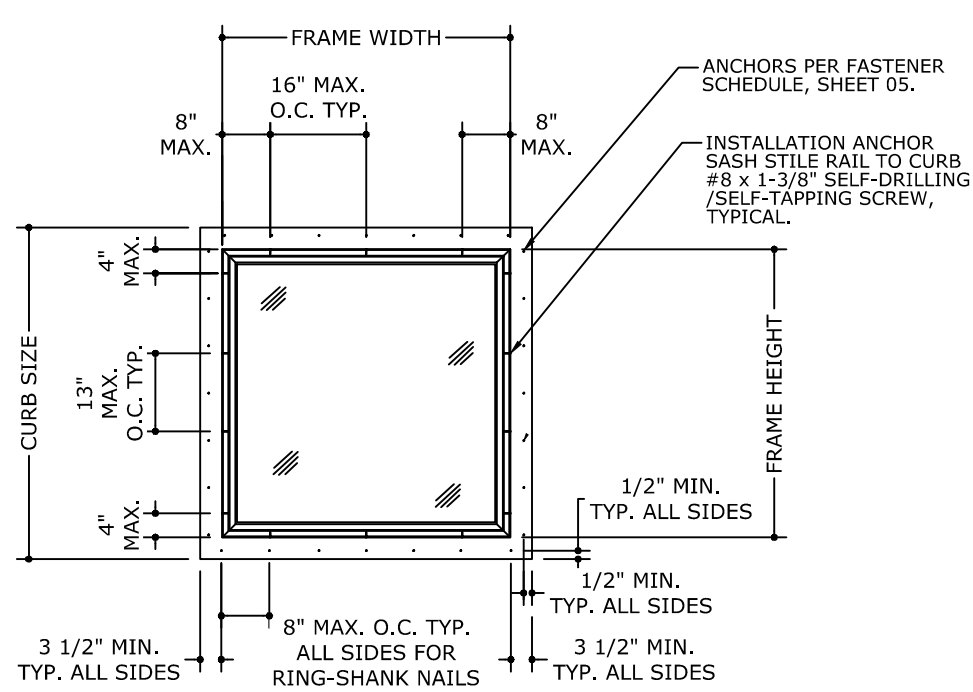
COPYRIGHT ENGINEERING EXPRESS®

21-40981

SCALE: NTS UNLESS NOTED

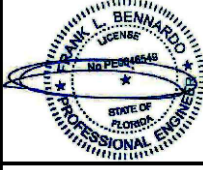
04

ANCHOR SCHEDULE



ANCHOR SCHEDULE					
ANCHOR TYPE	ANCHOR DIAMETER	TYPE	SUBSTRATE	MIN. EMBEDMENT (IN)	MIN. EDGE DISTANCE (IN)
A	1/4"	TAPCON	POURED CONCRETE 3000 PSI MIN	1-1/2 MIN. INTO CONCRETE	1-1/2
B	#12	SELF DRILLING SCREW	1/8" STEEL-A36 1/8" ALUMINUM-6063-T6	PROTRUDE 3 PINCHES MIN. PAST UNDERSIDE OF SUBSTRATE	1/2
C	#12	SELF DRILLING SCREW	PLYWOOD OR OSB (7/16" PLYWOOD GROUP 1 OR 2 (PS1) OR 7/16" SHEATHING (PS2))	PROTRUDE 1/4" PAST UNDERSIDE OF SUBSTRATE	1/2
D	#10	WOOD SCREW	2X WOOD BUCK (SYP#2 MIN.) G=0.55	1-1/2 MIN. INTO WOOD SUBSTRATE	1/2
E	0.099"	RING-SHANK NAIL WITH 1/4" ROUND HEAD	2X WOOD BUCK (SYP#2 MIN.) G=0.55	PROTRUDE 1/4" PAST UNDERSIDE OF SUBSTRATE	1/2
F	0.099"	RING-SHANK NAIL WITH 1/4" ROUND HEAD	PLYWOOD OR OSB (7/16" PLYWOOD GROUP 1 OR 2 (PS1) OR 7/16" SHEATHING (PS2))	PROTRUDE 1/4" PAST UNDERSIDE OF SUBSTRATE	1/2

FRANK BENNARDO, P.E.
PE# 0046549 CA, 9885



06/15/2021

FL# 39163.1

ENGINEERING EXPRESS
CORPORATE OFFICE:
160 SW 12th AVE, SUITE 106
DEERFIELD BEACH, FL 33442
(954) 354-0660 | (866) 396-9999
TEAM@ENGINEERINGEXPRESS.COM
ENGINEERINGEXPRESS.COM

KENNEDY SKYLIGHTS
5294 TOWER WAY
SANFORD, FL 32773
PH: (800) 280-2545
MODEL "SFG4" CURB MOUNTED SELF-FLASHING
GLASS SKYLIGHT
IMPACT & NON IMPACT

REMARKS	DATE	06/01/21
	DRWN/CHKD	TAE/AJP
FBC 2020 UPDATE		

COPYRIGHT ENGINEERING EXPRESS®

21-40981

SCALE: NTS UNLESS NOTED

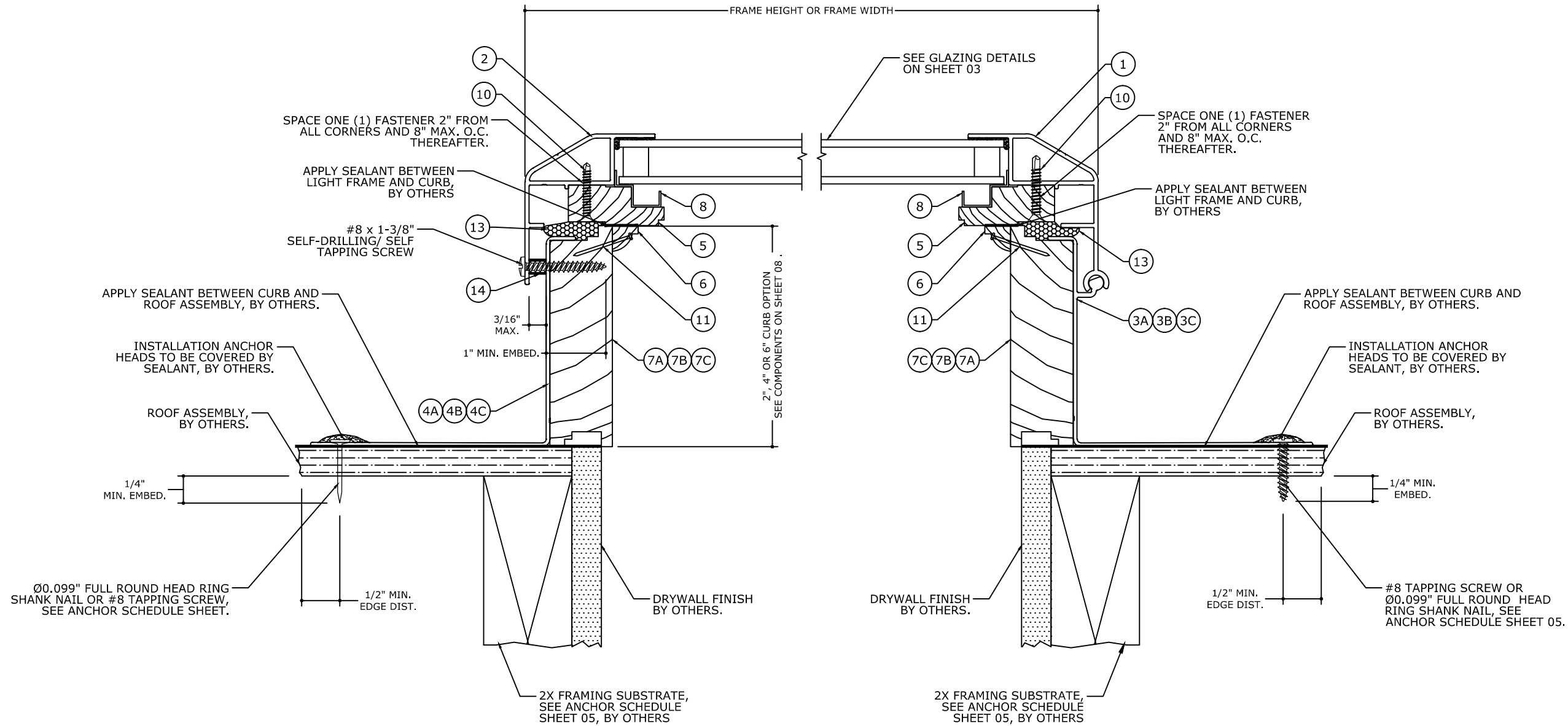
05

06/15/2021 - 11:47am thayer C:\Users\thayer\Engineering Express\Production - Documents\Projects\21-40981 ISFG4 Curb Mounted Glass Skylight Non Impact and Impact\WorkDrawings & CAD\21-40981 Skylight SFG (2020 FSA).dwg

C:\Users\thayer\Engineering Express\Production - Documents\Projects\21-40981 ISFG4 Curb Mounted Glass Skylight Non Impact and Impact\WorkDrawings & CAD\21-40981 Skylight SFG (2020 FSA).dwg

06/15/2021 - 11:47am thayer

CROSS SECTION DETAILS



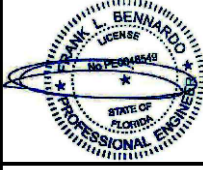
1 **INSTALLATION CROSS SECTION**
 NON-HINGE SIDE
 2X FRAMING INSTALLATION DETAIL
 Ø 0.148" RING SHANK NAIL SHOWN, #10 TAPPING SCREW ALSO APPROVED, SEE ANCHOR SCHEDULE SHEET 05

1A **INSTALLATION CROSS SECTION**
 HINGE SIDE
 2X FRAMING INSTALLATION DETAIL
 #10 TAPPING SCREW SHOWN, Ø 0.148" RING SHANK NAIL ALSO APPROVED, SEE ANCHOR SCHEDULE SHEET 05

SEE ANCHOR SCHEDULE SHEET 05 FOR OTHER APPROVED TYPES.

NOTE: REFER TO SYSTEM INSTALLATION MANUAL FOR FABRICATION AND ASSEMBLY INSTRUCTIONS.

FRANK BENNARDO, P.E.
 PE# 0046549 CA. 9885



06/15/2021

FL# 39163.1

ENGINEERING EXPRESS
 CORPORATE OFFICE:
 160 SW 12th AVE, SUITE 106
 DEERFIELD BEACH, FL 33442
 (954) 354-0660 | (866) 396-9999
 TEAM@ENGINEERINGEXPRESS.COM
 ENGINEERINGEXPRESS.COM

KENNEDY SKYLIGHTS
 5294 TOWER WAY
 SANFORD, FL 32773
 PH: (800) 280-2545

MODEL "SFG4" CURB MOUNTED SELF-FLASHING GLASS SKYLIGHT IMPACT & NON IMPACT

REMARKS	DRWN	CHKD	DATE
FBC 2020 UPDATE	TAE	AJP	06/01/21

COPYRIGHT ENGINEERING EXPRESS®

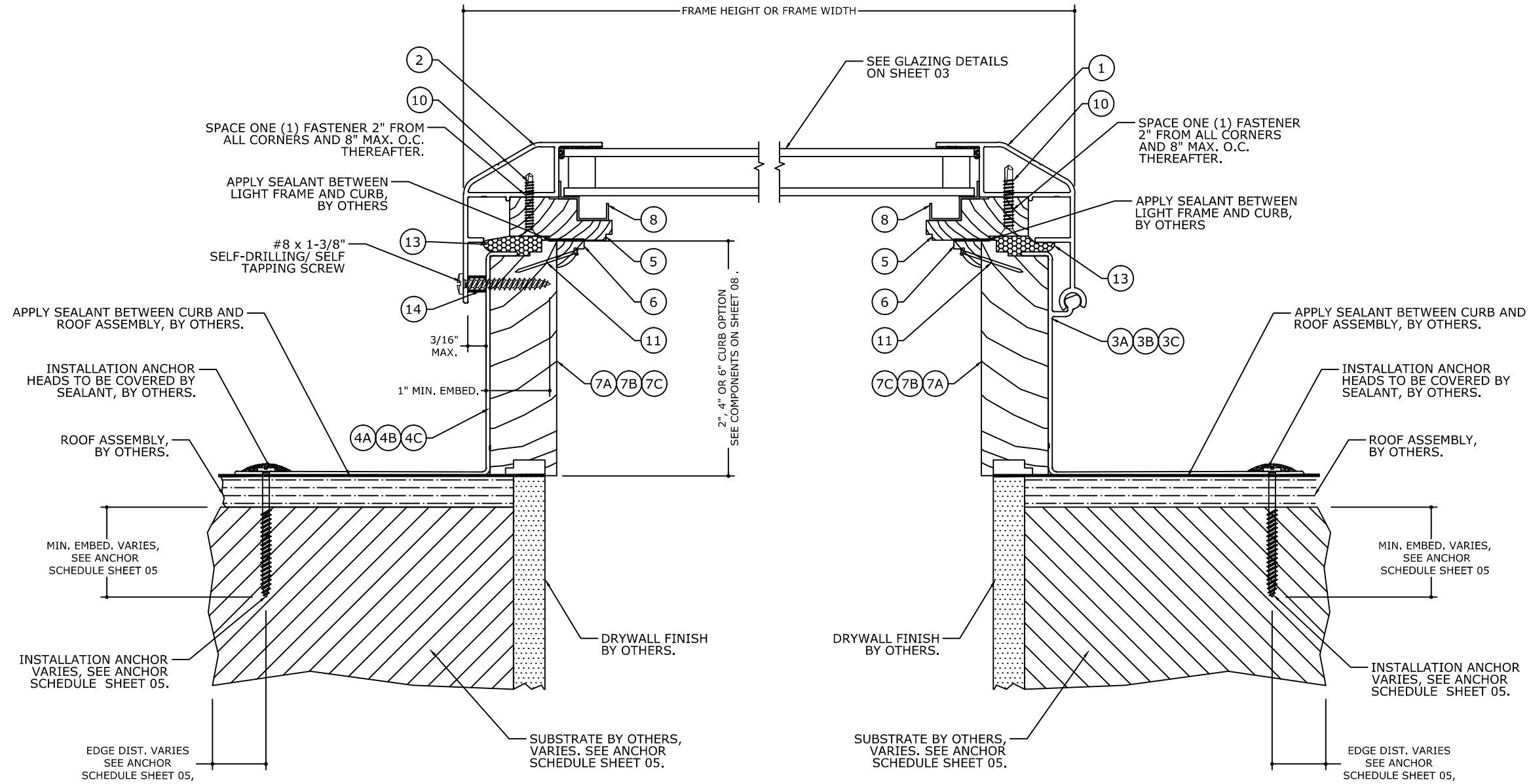
21-40981

SCALE: NTS UNLESS NOTED

06

C:\Users\thayer\Engineering\Express\Production - Documents\Projects\21-40981 ISFG4 Curb Mounted Glass Skylight Non Impact and Impact\WorkDrawings & CAD\21-40981 Skylight SFG (2020 FSA).dwg

CROSS SECTION DETAILS



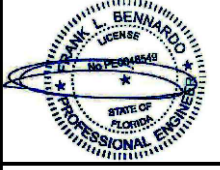
2 **INSTALLATION CROSS SECTION**
 NON-HINGE SIDE
 2X FRAMING, CONCRETE & METAL
 FRAMING INSTALLATION DETAIL
 SEE ANCHOR SCHEDULE SHEET 05

2A **INSTALLATION CROSS SECTION**
 HINGE SIDE
 2X FRAMING, CONCRETE & METAL
 FRAMING INSTALLATION DETAIL
 SEE ANCHOR SCHEDULE SHEET 05

SEE ANCHOR SCHEDULE SHEET 05 FOR OTHER APPROVED TYPES.

NOTE: REFER TO SYSTEM INSTALLATION MANUAL FOR FABRICATION AND ASSEMBLY INSTRUCTIONS.

FRANK BENNARDO, P.E.
 PE# 0046549 CA. 9885



06/15/2021

FL# 39163.1

ENGINEERING EXPRESS
 CORPORATE OFFICE:
 160 SW 12th AVE, SUITE 106
 DEERFIELD BEACH, FL 33442
 (954) 354-0660 | (866) 396-9999
 TEAM@ENGINEERINGEXPRESS.COM
 ENGINEERINGEXPRESS.COM

KENNEDY SKYLIGHTS
 5294 TOWER WAY
 SANFORD, FL 32773
 PH: (800) 280-2545
 MODEL "SFG4" CURB MOUNTED SELF-FLASHING
 GLASS SKYLIGHT
 IMPACT & NON IMPACT

REMARKS	DRWN	CHKD	DATE
FBC 2020 UPDATE	TAE	AJP	06/01/21

COPYRIGHT ENGINEERING EXPRESS®

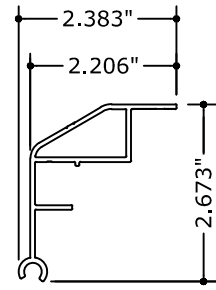
21-40981

SCALE: NTS UNLESS NOTED

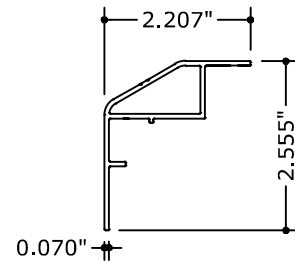
07

C:\Users\thayer\Engineering Express\Production - Documents\Projects\21-40981 ISFG4 Curb Mounted Glass Skylight Non Impact and Impact\WorkDrawings & CAD\21-40981 Skylight SFG (2020 FSA).dwg

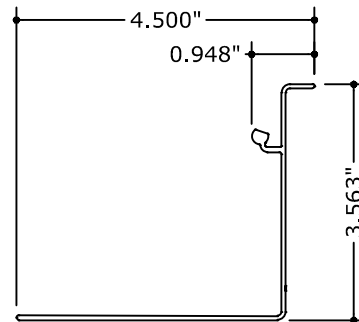
SYSTEM COMPONENTS



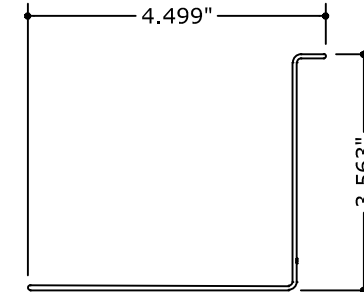
① **SASH HINGE**
EXTRUDED ALUMINUM
6063-T6, 0.070" THICK



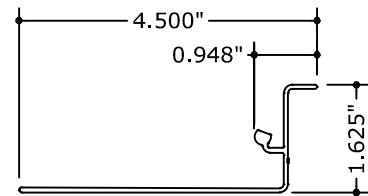
② **SASH STILE RAIL**
EXTRUDED ALUMINUM
6063-T6, 0.070" THICK



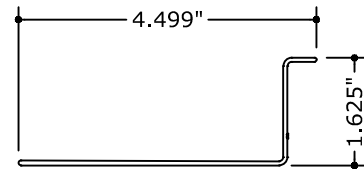
③A **4" CURB HINGE**
EXTRUDED ALUMINUM 6063-T6
0.063" THICK



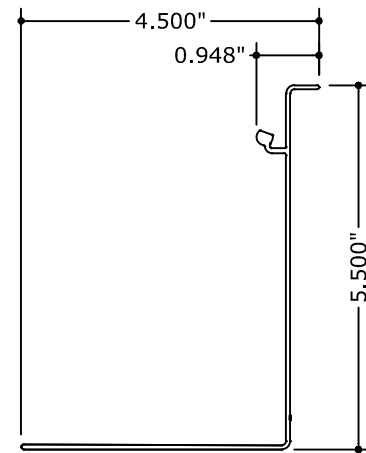
④A **4" CURB**
EXTRUDED ALUMINUM 6063-T6
0.063" THICK



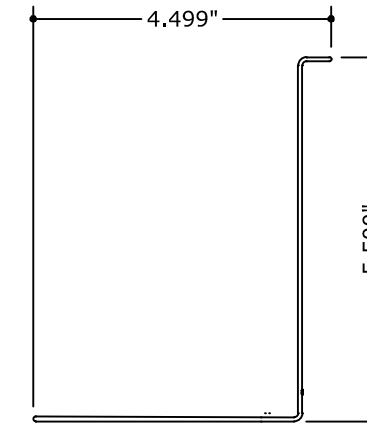
③B **2" CURB HINGE**
EXTRUDED ALUMINUM 6063-T6
0.063" THICK



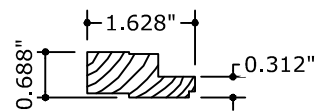
④B **2" CURB**
EXTRUDED ALUMINUM 6063-T6
0.063" THICK



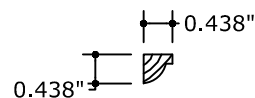
③C **6" CURB HINGE**
EXTRUDED ALUMINUM 6063-T6
0.063" THICK



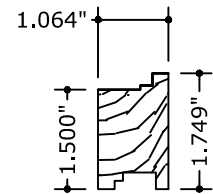
④C **6" CURB**
EXTRUDED ALUMINUM 6063-T6
0.063" THICK



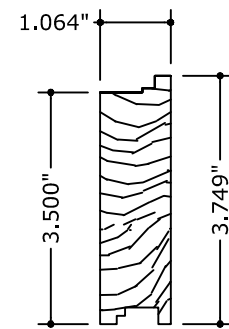
⑤ **WOOD SASH FRAME**



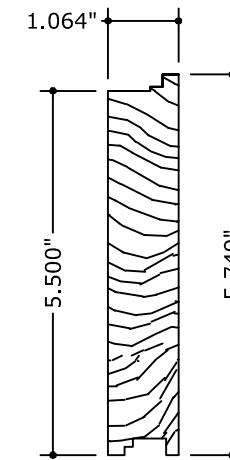
⑥ **WOOD SASH STOP**



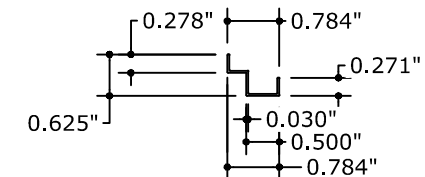
⑦A **WOOD CURB**
2" OPTION



⑦B **WOOD CURB**
4" OPTION

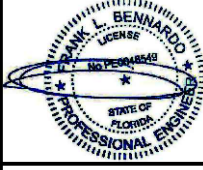


⑦C **WOOD CURB**
6" OPTION



⑧ **CONDENSATION CHANNEL**
RPVC WITH UV PROTECTION
0.030" THICK

FRANK BENNARDO, P.E.
PE# 0046549 CA, 9885



06/15/2021

FL# 39163.1

ENGINEERING EXPRESS
CORPORATE OFFICE:
160 SW 12th AVE, SUITE 106
DEERFIELD BEACH, FL 33442
(954) 354-0660 | (866) 396-9999
TEAM@ENGINEERINGEXPRESS.COM
ENGINEERINGEXPRESS.COM

KENNEDY SKYLIGHTS

5294 TOWER WAY
SANFORD, FL 32773
PH: (800) 280-2545
MODEL "SFG4" CURB MOUNTED SELF-FLASHING
GLASS SKYLIGHT
IMPACT & NON IMPACT

REMARKS	DRWN	CHKD	DATE
FBC 2020 UPDATE	TAE	AJP	06/01/21

COPYRIGHT ENGINEERING EXPRESS®

21-40981

SCALE: NTS UNLESS NOTED

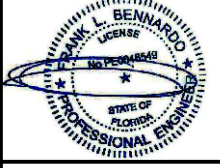
08

C:\Users\thayer\Engineering Express\Production - Documents\Projects\21-40981 ISFG4 Cub Mounted Glass Skylight Non Impact and Impact\WorkDrawings & CAD\21-40981 Skylight SFG (2020 FSA).dwg

BILL OF MATERIALS

ITEM #	PART #	ITEM DESCRIPTION	MANUFACTURER	MATERIAL
1	FE4694	SASH HINGE	INDALEX ALUM. SOLUTIONS	ALUM. 6063-T6
2	FE4693	SASH STILE RAIL	INDALEX ALUM. SOLUTIONS	ALUM. 6063-T6
3A	FE4695	4" CURB HINGE	INDALEX ALUM. SOLUTIONS	ALUM. 6063-T6
4A	FE46700	4" CURB	INDALEX ALUM. SOLUTIONS	ALUM. 6063-T6
3B	FE4695	2" CURB HINGE	INDALEX ALUM. SOLUTIONS	ALUM. 6063-T6
4B	FE46700	2" CURB	INDALEX ALUM. SOLUTIONS	ALUM. 6063-T6
3C	FE4695	6" CURB HINGE	INDALEX ALUM. SOLUTIONS	ALUM. 6063-T6
4C	FE46700	6" CURB	INDALEX ALUM. SOLUTIONS	ALUM. 6063-T6
5	SM KS-5	WOOD SASH FRAME	KENNEDY SKYLIGHTS, LLC	WOOD
6	SM KS-6	SASH STOP	KENNEDY SKYLIGHTS, LLC	WOOD
7A	SM KS-2	WOOD CURB 2"	KENNEDY SKYLIGHTS, LLC	WOOD
7B	SM KS-2	WOOD CURB 4"	KENNEDY SKYLIGHTS, LLC	WOOD
7C	SM KS-2	WOOD CURB 6"	KENNEDY SKYLIGHTS, LLC	WOOD
8	-----	CONDENSATION CHANNEL	OMEGA PLASTICS	RPVC W/UV PROTECTION
9		GLAZING COMPOUND	NOVAFLEX	STRUCTURAL SILICONE
10		#8 x 1 1/4" FH SELF-DRILLING SCREW		
11		16GA. x 1 1/8" BRAD NAIL		
12		NON-IMPACT GLAZING, SEE SHEET 4		
13		1" x 1 1/4" FOAM GASKET		EDPM FOAM
14		RIGID SPACER FOR SASH STILE RAIL INSTALLATION, SEE INSTALLATION NOTE 4 SHEET 2		RIGID

FRANK BENNARDO, P.E.
PE# 0046549 CA. 9885



06/15/2021

FL# 39163.1



CORPORATE OFFICE:
160 SW 12th AVE, SUITE 106
DEERFIELD BEACH, FL 33442
(954) 354-0660 | (866) 396-9999
TEAM@ENGINEERINGEXPRESS.COM
ENGINEERINGEXPRESS.COM

KENNEDY SKYLIGHTS

5294 TOWER WAY
SANFORD, FL 32773
PH: (800) 280-2545

MODEL "SFG4" CURB MOUNTED SELF-FLASHING
GLASS SKYLIGHT
IMPACT & NON IMPACT

REMARKS	DRWN	CHKD	DATE
FBC 2020 UPDATE	TAE	AJP	06/01/21

COPYRIGHT ENGINEERING EXPRESS®

21-40981

SCALE: NTS UNLESS NOTED

09