

# SIMPSON DOOR CO.

## Hemlock/Fir Glazed Double Outswing Door w/Sidelites (True Divided Lites) INSTALLATION ANCHORAGE DETAILS

### GENERAL NOTES:

- THIS PRODUCT IS DESIGNED TO COMPLY WITH THE CURRENT EDITION OF THE FLORIDA BUILDING CODE - BUILDING (FBC) AND RESIDENTIAL (FRC) REQUIREMENTS EXCLUDING THE HIGH VELOCITY HURRICANE ZONE (HVHZ) AT THE DESIGN PRESSURE(S) STATED HEREIN. THE PRODUCT DETAILS CONTAINED HEREIN ARE BASED UPON SIGNED AND SEALED TEST REPORT # NCTL-210-4190-5 AND ASSOCIATED LABORATORY STAMPED DRAWINGS.
- ADEQUACY OF THE EXISTING STRUCTURAL CONCRETE / MASONRY AND 2X FRAMING AS A MAIN WIND FORCE RESISTING SYSTEM CAPABLE OF WITHSTANDING AND TRANSFERRING APPLIED PRODUCT LOADS TO THE STRUCTURE IS THE RESPONSIBILITY OF THE ENGINEER OR ARCHITECT OF RECORD.
- 1X AND 2X BUCKS (WHEN USED) SHALL BE DESIGNED AND ANCHORED TO PROPERLY TRANSFER ALL LOADS TO THE STRUCTURE. BUCK DESIGN AND INSTALLATION IS THE RESPONSIBILITY OF THE ENGINEER OR ARCHITECT OF RECORD.
- IN AREAS WHERE WIND-BORNE DEBRIS PROTECTION REQUIREMENTS EXIST, USE OF AN APPROVED IMPACT PROTECTIVE SYSTEM IS REQUIRED.
- DOOR FRAME AND COMPONENTS STRUCTURAL CORE MATERIAL: LAMINATED VENEER LUMBER (LVL) AND/OR FIR OR PINE FINGERJOINTED AND EDGE GLUED CORE MATERIAL. USE OF ALTERNATE WOOD VENEERS ON THE SAME STRUCTURAL CORE MATERIAL IS ACCEPTABLE FOR THIS PRODUCT. LVL MAY BE EITHER VERTICAL OR HORIZONTAL ORIENTATION.
- GLASS MEETS THE REQUIREMENTS OF ASTM E1300-12AE1.

- DESIGNATIONS "X" AND "O" STAND FOR THE FOLLOWING:  
X: OPERABLE PANEL  
O: FIXED PANEL
- PERIMETER AND JOINT SEALANT BY OTHERS TO BE DETAILED IN ACCORDANCE WITH THE FBC, RESIDENTIAL AND BUILDING VOLUMES AND WITH FMA/AAMA/WDMA PROTOCOLS. PERIMETER AND JOINT SEALANT IS SHOWN FOR ILLUSTRATIVE PURPOSES ONLY AND IS NOT PART OF THIS PRODUCT APPROVAL DOCUMENT.

### INSTALLATION NOTES:

- ONE (1) INSTALLATION ANCHOR IS REQUIRED AT EACH ANCHOR LOCATION SHOWN.
- THE NUMBER OF INSTALLATION ANCHORS DEPICTED ARE THE MINIMUM NUMBER OF ANCHORS TO BE USED FOR PRODUCT INSTALLATION. ANCHORS ARE TO MATCH TYPE, SIZE, AND EMBEDMENT OF THOSE SHOWN HEREIN FOR RESPECTIVE SUBSTRATE.
- SHIM AS REQUIRED AT EACH INSTALLATION ANCHOR WITH LOAD BEARING SHIM(S). MAXIMUM ALLOWABLE SHIM SIZE IS 1/4 INCH. SHIM WHERE SPACE OF 1/16 INCH OR GREATER OCCURS. SHIM(S) SHALL BE CONSTRUCTED OF HIGH DENSITY PLASTIC OR BETTER.
- FOR INSTALLATION INTO WOOD FRAMING, USE #10 WOOD SCREWS OF SUFFICIENT LENGTH TO ACHIEVE 1 1/2 INCH MINIMUM EMBEDMENT. MINIMUM EDGE DISTANCE IS 3/4 INCHES.
- FOR INSTALLATION THROUGH 1X BUCK TO CONCRETE / MASONRY, OR DIRECTLY INTO CONCRETE / MASONRY, USE 1/4 INCH ITW TAPCONS (ADVANCED THREADFORM) OF SUFFICIENT LENGTH TO ACHIEVE 1 3/4 INCH MINIMUM EMBEDMENT INTO CONCRETE AND 1 INCH MINIMUM EMBEDMENT INTO MASONRY. MINIMUM EDGE DISTANCE IS 2-1/2 INCHES FOR CONCRETE AND MASONRY.
- MINIMUM EMBEDMENT AND EDGE DISTANCE EXCLUDE WALL FINISHES (INCLUDING BUT NOT LIMITED TO STUCCO, FOAM, BRICK VENEER AND SIDING).
- FOR CONCRETE BLOCK, DO NOT INSTALL INSTALLATION ANCHORS INTO MORTAR JOINTS. EDGE DISTANCE IS MEASURED FROM FREE EDGE OF BLOCK OR EDGE OF MORTAR JOINT INTO FACE SHELL OF BLOCK.
- INSTALLATION ANCHOR CAPACITIES FOR PRODUCTS HEREIN ARE BASED ON SUBSTRATE MATERIALS WITH THE FOLLOWING PROPERTIES:
  - WOOD - MINIMUM SPECIFIC GRAVITY OF 0.42 (NON-HVHZ).
  - CONCRETE - MINIMUM COMPRESSIVE STRENGTH OF 2500 PSI.
  - MASONRY - STRENGTH CONFORMANCE TO ASTM C-90 MEDIUM WEIGHT WITH COMPRESSIVE STRENGTH OF 1900 psi (DENSITY > 117 PCF).


TABLE OF CONTENTS		
SHEET	REV.	SHEET DESCRIPTION
1	---	GENERAL AND INSTALLATION NOTES
2	---	ELEVATION
3	---	ANCHOR LAYOUT
4	---	VERTICAL SECTIONS
5	---	VERTICAL SECTIONS & GLAZING DETAIL
6	---	HORIZONTAL SECTIONS

DESIGN PRESSURE RATING (PSF)		IMPACT RATING
WHERE WATER INFILTRATION REQUIREMENT IS NEEDED	WHERE WATER INFILTRATION REQUIREMENT IS NOT NEEDED	NONE
±50.0	±50.0	

PROJECT NO. 421-0102

SIMPSON DOOR COMPANY  
400 SIMPSON AVE.  
MCCLEARY, WA 98557

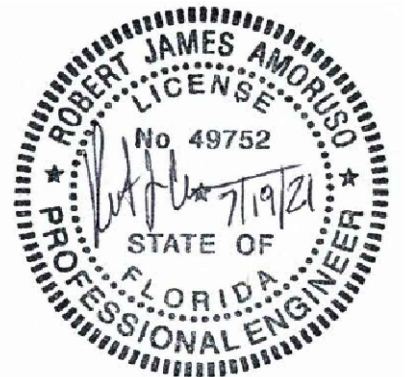
TITLE: Hemlock/Fir Glazed Double Outswing Door w/Sidelites (TDL)  
GENERAL AND INSTALLATION NOTES

PREPARED BY:  PTC Product Design Group, LLC  
PO Box 520775  
Longwood, FL 32752-0775  
FBPE C.A. NO. 25935

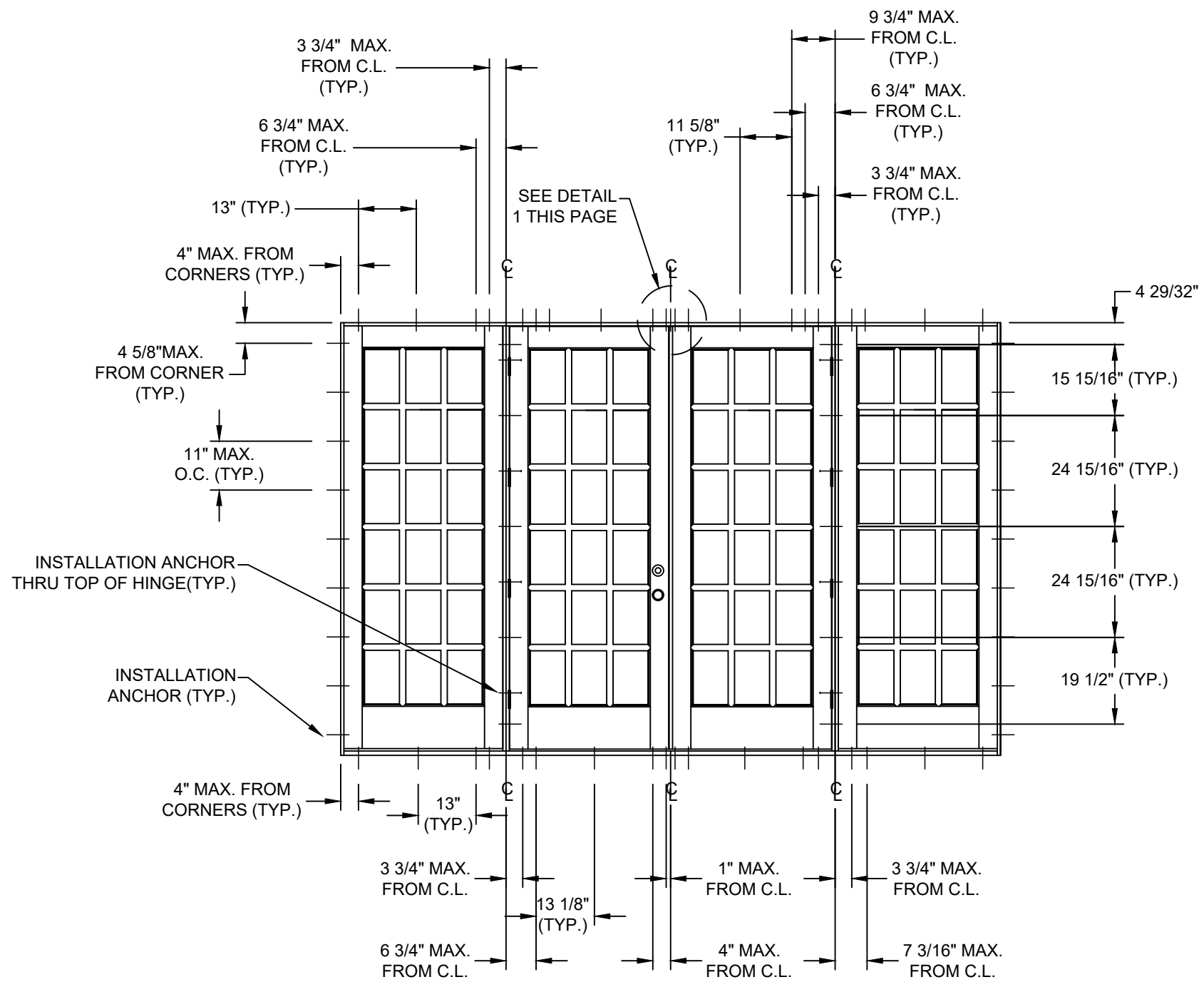
DRAWN BY: RJA  
SCALE: N.T.S.  
REV: ---

DATE: 6/18/21  
DRAWING NO: SIMP0024  
SHEET: 1 OF 6

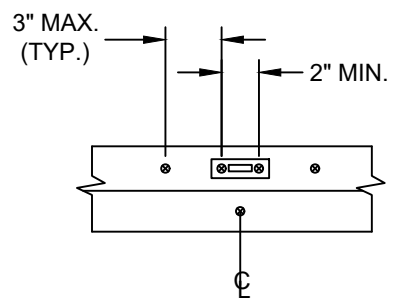
Robert J. Amoruso, P.E.  
Florida P.E. No. 49752







**ANCHOR LAYOUT**  
INTERIOR VIEW



**DETAIL 1**  
ANCHORAGE AT  
SURFACE BOLT

PROJECT NO. 421-0102

REV	DESCRIPTION	DATE	BY

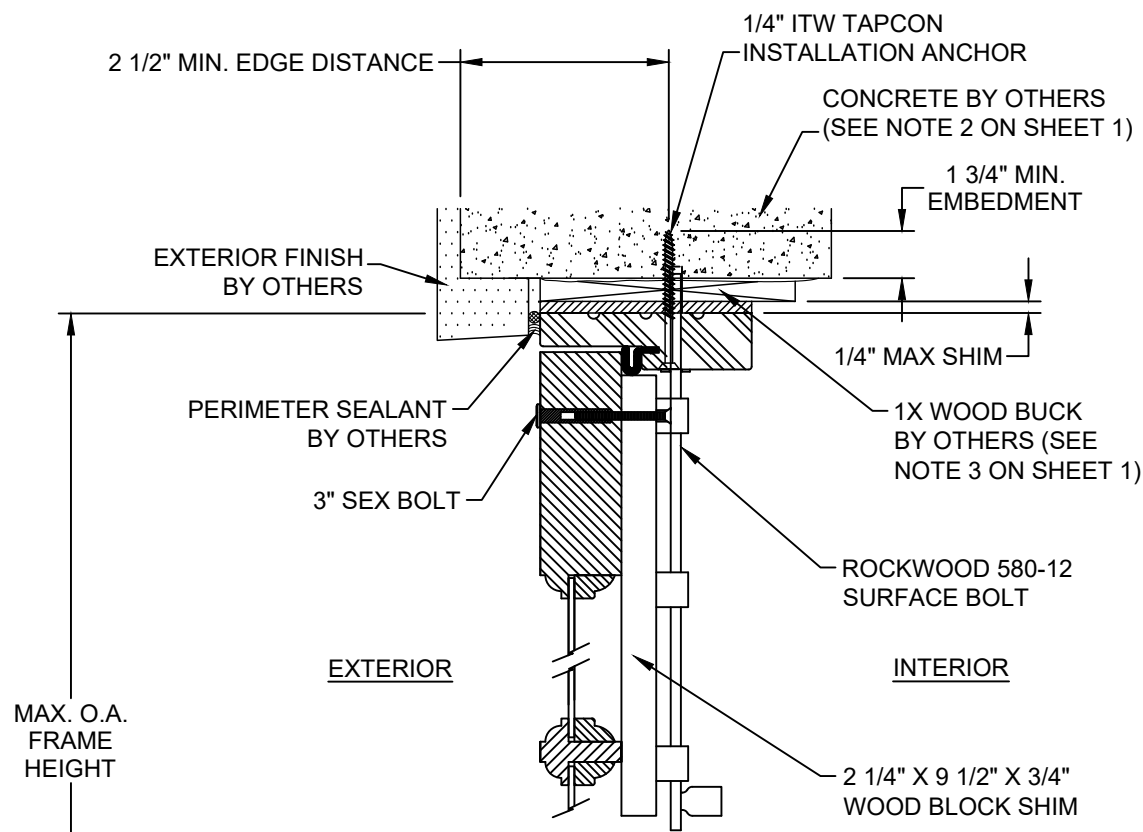
**SIMPSON DOOR COMPANY**  
400 SIMPSON AVE.  
MCCLEARY, WA 98557

TITLE: Hemlock/Fir Glazed Double Outswing Door w/Sidelites (TDL)  
ANCHOR LAYOUT

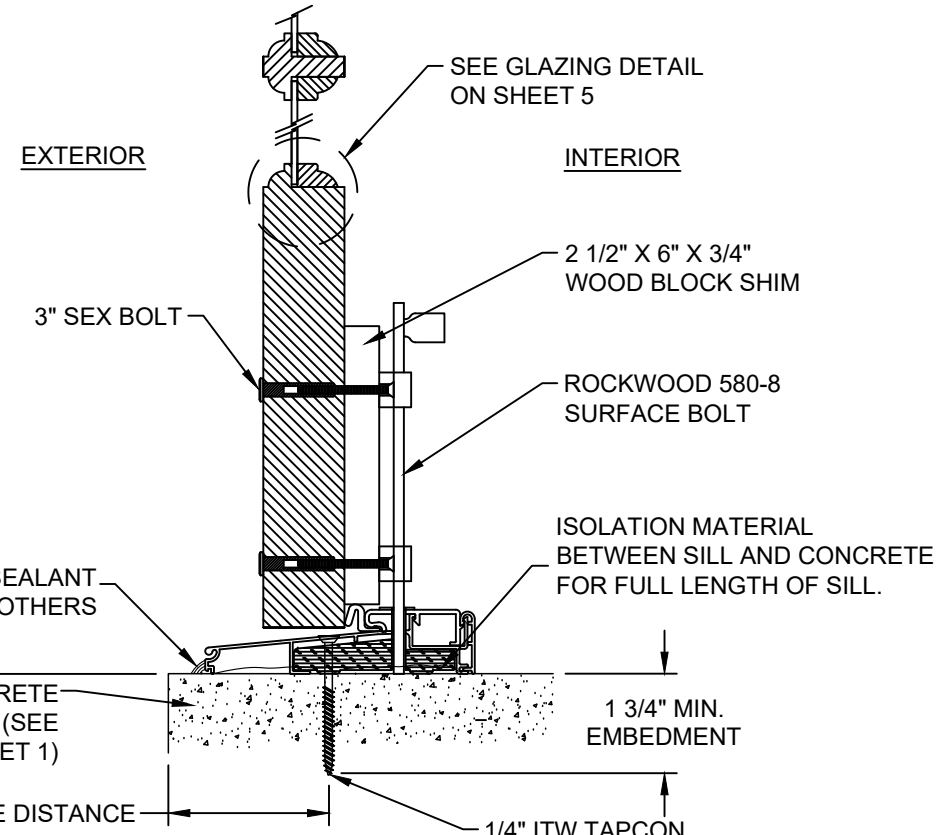
PREPARED BY: **RF**  
DRAWN BY: RJA  
SCALE: N.T.S.  
DATE: 6/18/21  
DRAWING NO: SIMP0024  
SHEET: 3 OF 6

PTC Product Design Group, LLC  
PO Box 520775  
Longwood, FL 32752-0775  
Phone: 321.690.1788  
Fax: 321.690.1789  
Email: info@pdc-corp.com  
FBPE C.A. NO. 25935

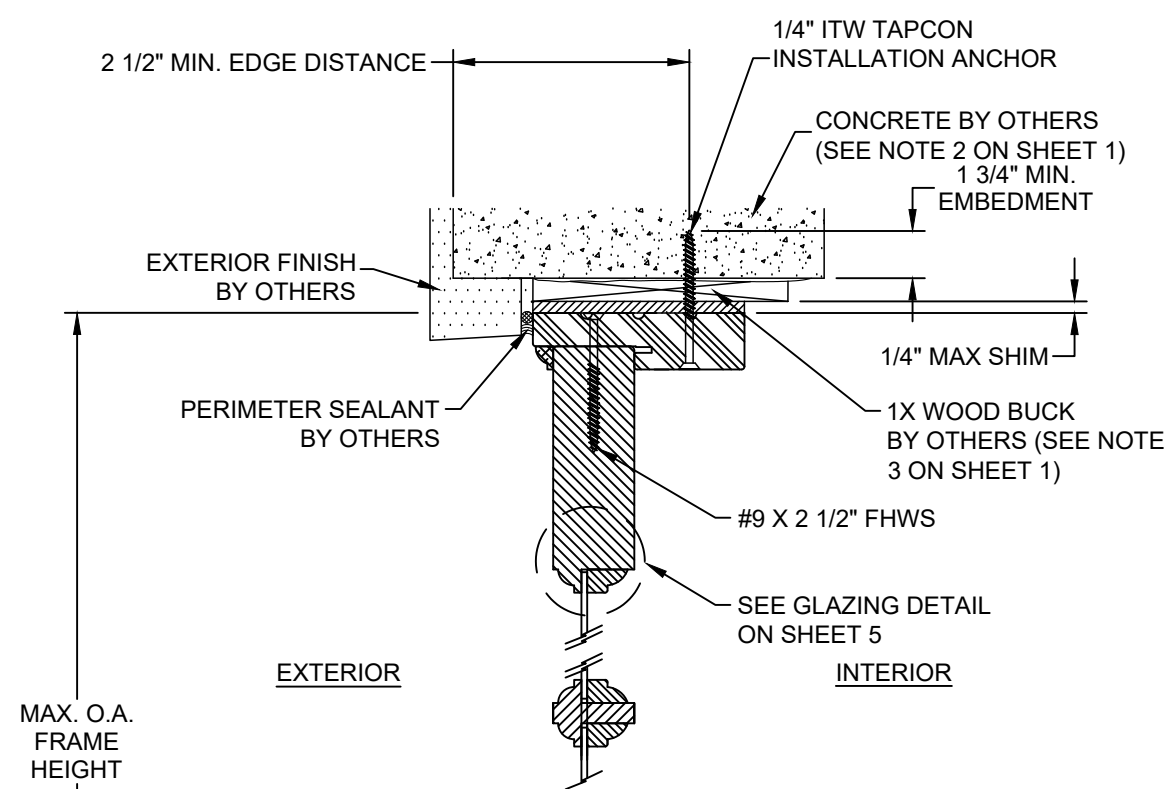
Robert J. Amoruso, P.E.  
Florida P.E. No. 49752



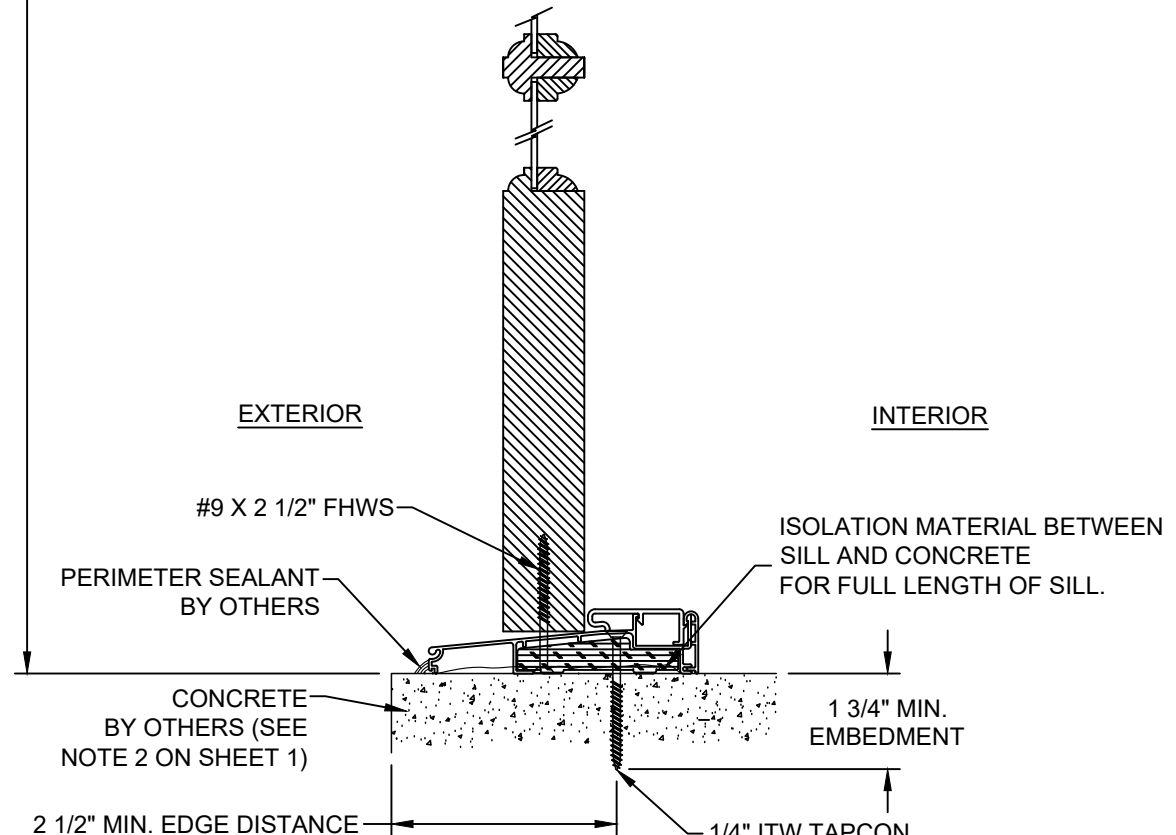
**B VERTICAL SECTION**  
CONCRETE SUBSTRATE  
DOOR PANEL AT HEAD



**A VERTICAL SECTION**  
CONCRETE SUBSTRATE  
DOOR PANEL AT SILL



**D VERTICAL SECTION**  
CONCRETE SUBSTRATE  
SIDELITE PANEL AT HEAD



**C VERTICAL SECTION**  
CONCRETE SUBSTRATE  
SIDELITE PANEL AT SILL

PROJECT NO. 421-0102

REV	DESCRIPTION	DATE	BY

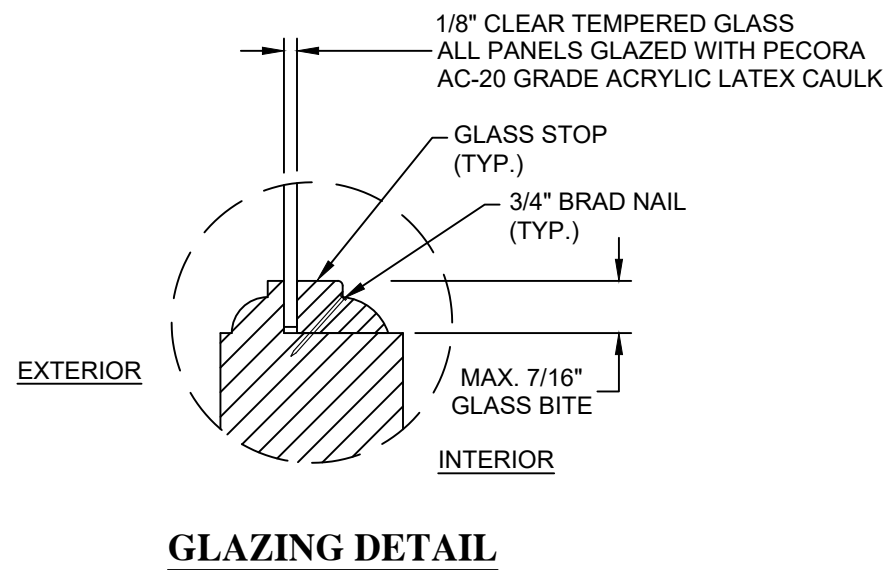
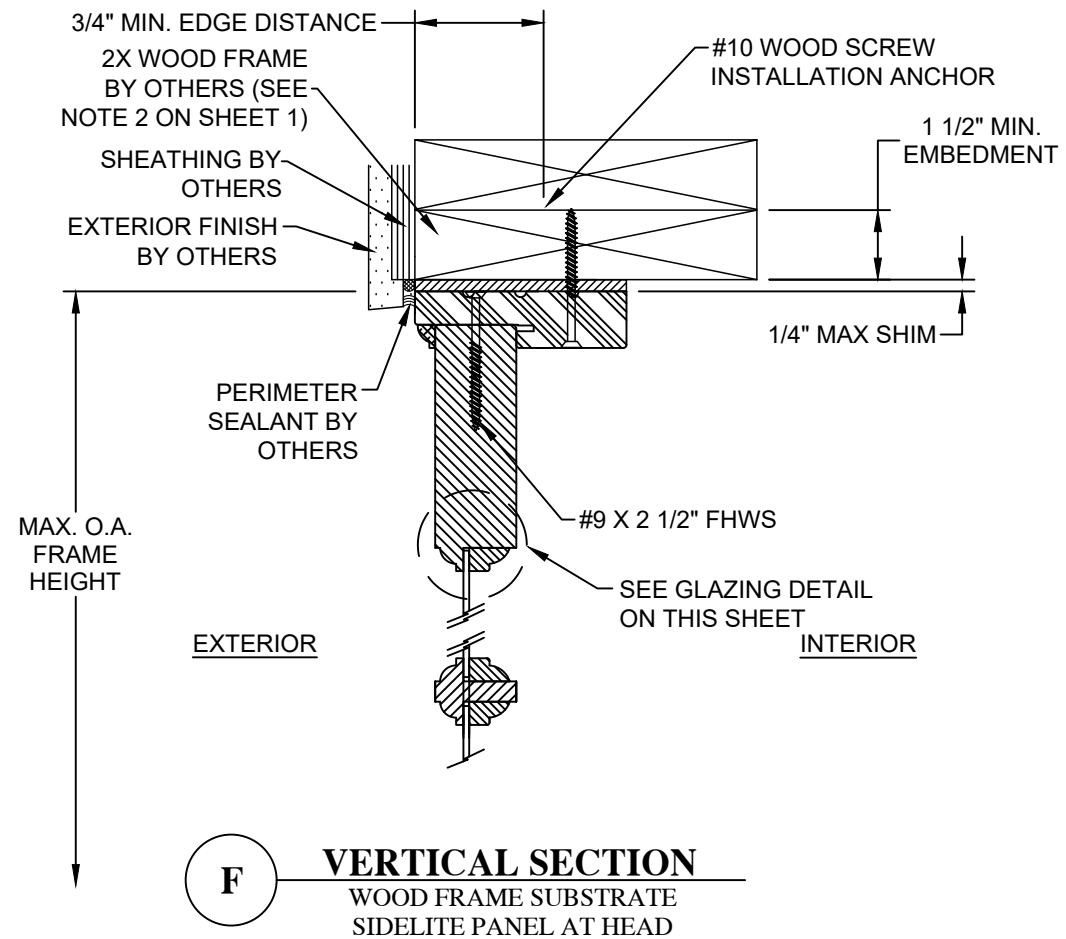
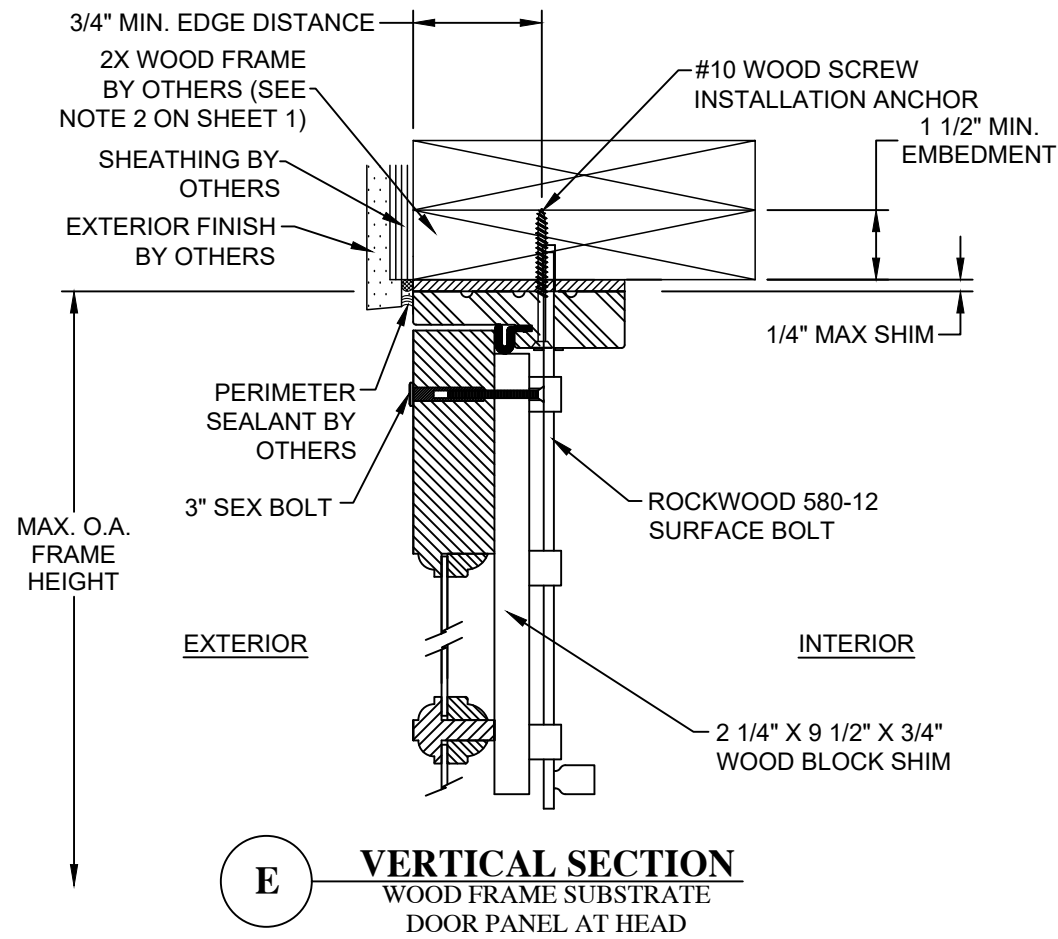
**SIMPSON DOOR COMPANY**  
400 SIMPSON AVE.  
MCCLEARY, WA 98557

DATE: 6/18/21  
DRAWING NO: SIMP0024  
SCALE: N.T.S.  
SHEET: 4 OF 6

PREPARED BY: RJA  
DRAWN BY: RJA  
SCALE: N.T.S.  
REV: ---

PTC Product Design Group, LLC  
PO Box 320775  
Longwood, FL 32752-0775  
Phone: 321.690.1788  
Fax: 321.690.1789  
Email: info@pdc-corp.com

Robert J. Amoruso, P.E.  
Florida P.E. No. 49752



PROJECT NO. 421-0102		BY
		DATE
		DESCRIPTION
		REV
		5 OF 6

**SIMPSON DOOR COMPANY**  
 400 SIMPSON AVE.  
 MCCLEARY, WA 98557

TITLE: Hemlock/Fir Glazed Double Outswing Door w/Sidelites (TDL)  
 VERTICAL SECTIONS & GLAZING DETAIL

PREPARED BY: RJA  
 DATE: 6/18/21  
 DRAWING NO: SIMP0024  
 SCALE: N.T.S.  
 SHEET: ---

PTC Product Design Group, LLC  
 PO Box 520775  
 Longwood, FL 32752-0775  
 Phone: 321.690.1788  
 Fax: 321.690.1789  
 Email: info@pdc-corp.com  
 FBPE C.A. NO. 25935

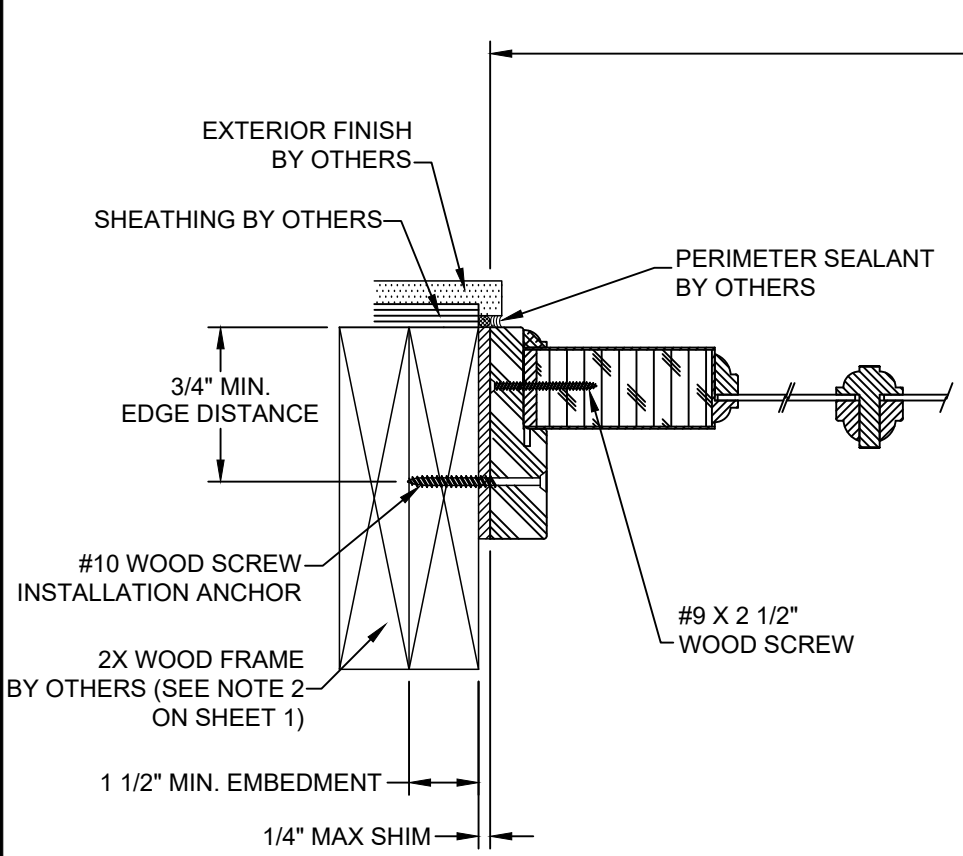
Robert J. Amoruso, P.E.  
 Florida P.E. No. 49752



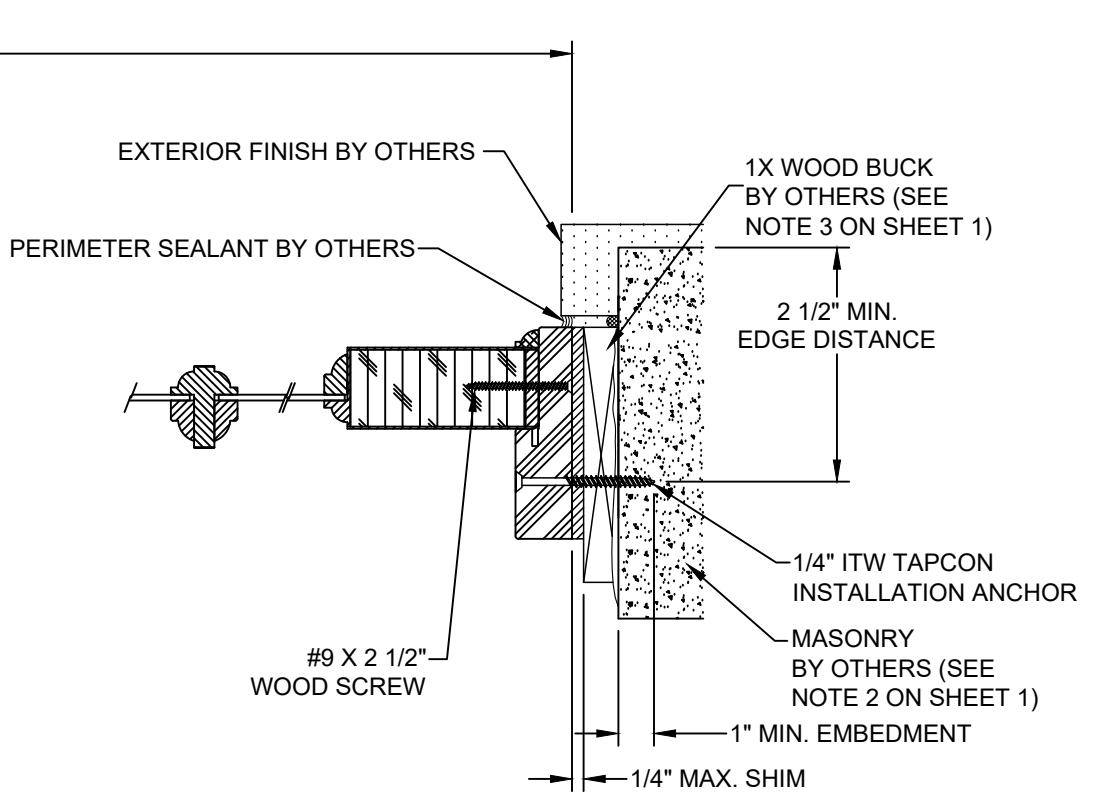
PROJECT NO. 421-0102					

<b>SIMPSON DOOR COMPANY</b> 400 SIMPSON AVE. MCCLEARY, WA 98557 TITLE: Hemlock/Fir Glazed Double Outswing Door w/Sidelites (TDL) HORIZONTAL SECTIONS PREPARED BY:	DATE:	6/18/21
	DRAWING NO.:	SIMP0024
	SCALE:	N.T.S.
	SHEET:	6 OF 6
DRAWN BY: RJA SCALE: N.T.S. REV: --- <b>FFC</b> PTC Product Design Group, LLC PO Box 520775 Longwood, FL 32752-0775 Phone: 321.690.1788 Fax: 321.690.1789 Email: info@ffc-corp.com FBPE C.A. NO. 25935		

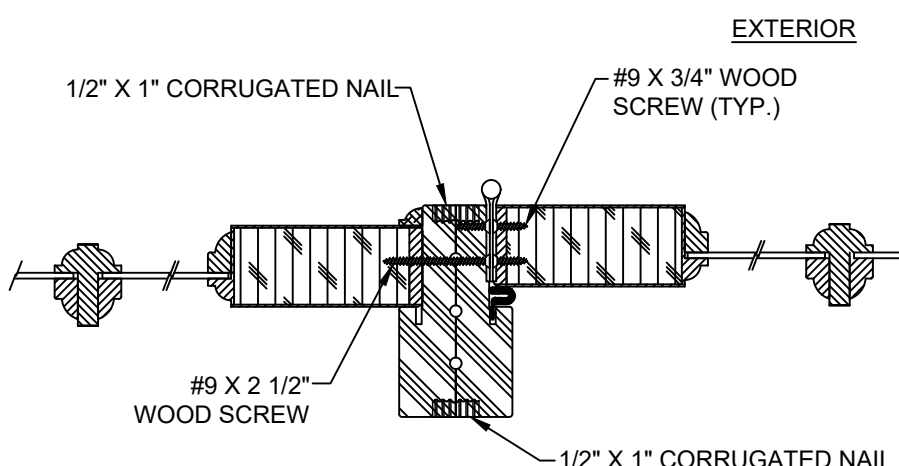
Robert J. Amoruso, P.E.  
Florida P.E. No. 49752



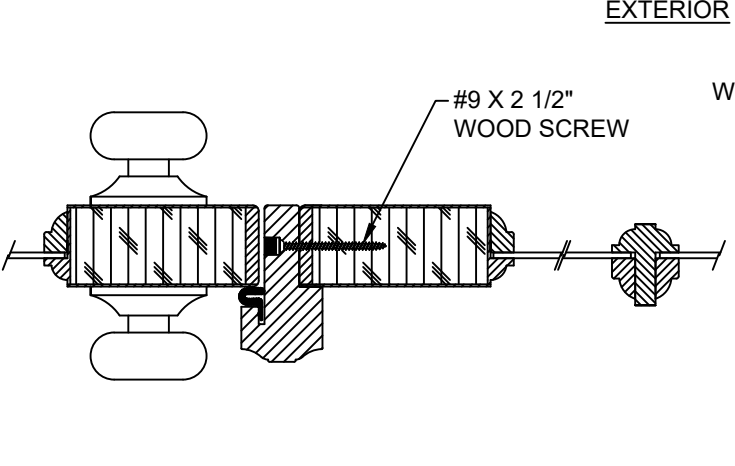
**G** **HORIZONTAL SECTION**  
WOOD SUBSTRATE  
SIDELITE PANEL AT JAMB



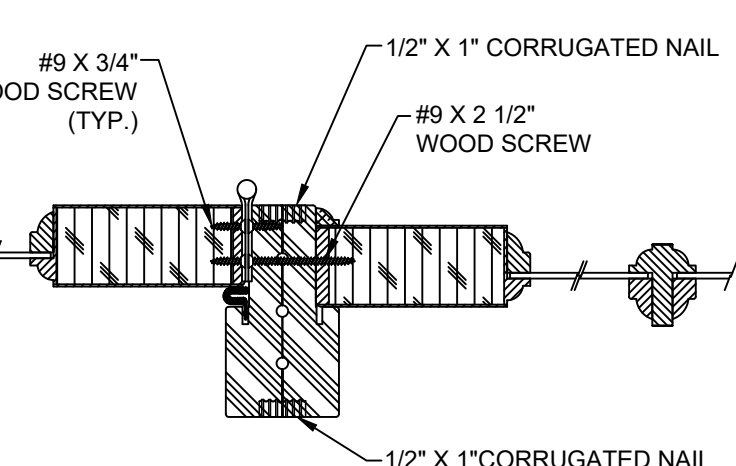
**H** **HORIZONTAL SECTION**  
MASONRY SUBSTRATE  
SIDELITE PANEL AT SIDELITE



**I** **HORIZONTAL SECTION**  
DOUBLE FRAME MULLION



**J** **HORIZONTAL SECTION**  
ASTRAGAL



**K** **HORIZONTAL SECTION**  
DOUBLE FRAME MULLION

MAX. O.A. FRAME WIDTH  
EXTERIOR

INTERIOR

EXTERIOR FINISH BY OTHERS

PERIMETER SEALANT BY OTHERS

1X WOOD BUCK BY OTHERS (SEE NOTE 3 ON SHEET 1)

2 1/2" MIN. EDGE DISTANCE

1/4" ITW TAPCON INSTALLATION ANCHOR

MASONRY BY OTHERS (SEE NOTE 2 ON SHEET 1)

1" MIN. EMBEDMENT

1/4" MAX. SHIM

#9 X 2 1/2" WOOD SCREW

EXTERIOR

EXTERIOR

INTERIOR

INTERIOR

PERIMETER SEALANT BY OTHERS

#9 X 2 1/2" WOOD SCREW

EXTERIOR FINISH BY OTHERS

SHEATHING BY OTHERS

3/4" MIN. EDGE DISTANCE

#10 WOOD SCREW INSTALLATION ANCHOR

2X WOOD FRAME BY OTHERS (SEE NOTE 2 ON SHEET 1)

1 1/2" MIN. EMBEDMENT

1/4" MAX SHIM

#9 X 3/4" WOOD SCREW (TYP.)

1/2" X 1" CORRUGATED NAIL

#9 X 2 1/2" WOOD SCREW

1/2" X 1" CORRUGATED NAIL

#9 X 2 1/2" WOOD SCREW

#9 X 3/4" WOOD SCREW (TYP.)

1/2" X 1" CORRUGATED NAIL

#9 X 2 1/2" WOOD SCREW

1/2" X 1" CORRUGATED NAIL